

SUMMARY OF QUANTITIES

PROJECT NO. 11CR.20971.19	SHEET NO.	TOTAL NO.
------------------------------	-----------	-----------

PROJECT	COUNTY	MAP	ROUTE	DESCRIPTION	TYP	FINAL SURFACE TESTING REQUIRED	LENGTH	WIDTH	ASPHALT SURFACE TREATMENT, MAT & SEAL	ASPHALT SURFACE TREATMENT, SPLIT SEAL	ASPHALT SURFACE TREATMENT, TRIPLE SEAL	ASPHALT SURFACE TREATMENT, TRIPLE SEAL (LIGHTWEIGHT AGGREGATE)
NO		NO			NO		MI	FT	SY	SY	SY	SY
11CR.20971.19	Wilkes	169	SR 1311	FROM SR 1145 TO END PVMT	1	NO	0.93	18		9,821		
11CR.20971.19	Wilkes	170	SR 1311	FROM BEGIN PVMT TO SR 1304	1	NO	0.95	18		10,032		
11CR.20971.19	Wilkes	171	SR 2343	FROM SR 2355 TO DEAD END	1	NO	0.63	18		6,653		
11CR.20971.19	Wilkes	172	SR 2361	FROM 2329 TO DEAD END	1	NO	0.11	20		1,491		
11CR.20971.19	Wilkes	173	SR 2377	FROM SR 2329 TO DEAD END	1	NO	0.46	16		4,518		
11CR.20971.19	Wilkes	174	SR 2391	FROM NC 268 TO EOM	1	NO	0.57	18		6,019		
11CR.20971.19	Wilkes	175	SR 2405	FROM SR 2400 TO SR 2403	1	NO	0.53	18		5,597		
11CR.20971.19	Wilkes	176	SR 2409	FROM YADKIN CO LINE TO SR 2403	1	NO	0.53	20		6,219		
11CR.20971.19	Wilkes	177	SR 2417	FROM SR 2416 TO DEAD END	1	NO	1.02	16		10,074		
11CR.20971.19	Wilkes	178	SR 2418	FROM SR 2431 EAST 0.96 MILES	1	NO	0.96	18		10,138		
11CR.20971.19	Wilkes	179	SR 2440	FROM SR 2355 TO EOM	1	NO	0.28	18		3,157		
11CR.20971.19	Wilkes	180	SR 2534	FROM NC 16 TO DEAD END	1	NO	0.49	20		5,949		
11CR.20971.19	Wilkes	181	SR 1107	FROM NC 18 TO SR 1106	1	NO	0.48	18		5,069		
11CR.20971.19	Wilkes	182	SR 1141	FROM NC 268 TO EOM	1	NO	0.51	18		5,386		
11CR.20971.19	Wilkes	183	SR 1157	FROM SR 1155 TO SR 1155	1	NO	1.56	20		18,304		
11CR.20971.19	Wilkes	184	SR 1171	FROM US 421 TO EOM	1	NO	1.24	16		11,640		
11CR.20971.19	Wilkes	185	SR 1196	FROM SR 1154 TO EOM	1	NO	0.83	16		7,991		
11CR.20971.19	Wilkes	186	SR 1250	FROM SR 1147 TO DEAD END	1	NO	0.36	18		4,002		
11CR.20971.19	Wilkes	187	SR 1301	FROM US 221 TO BRIDGE	1	NO	0.98	20		11,499		
11CR.20971.19	Wilkes	188	SR 1301	FROM BRIDGE TO SR 1300	1	NO	1.89	20		22,176		
11CR.20971.19	Wilkes	189	SR 1326	FROM SR 1325 TO SR 1446	1	NO	0.38	20		4,459		
11CR.20971.19	Wilkes	190	SR 1336	FROM SR 1372 TO DEAD END	1	NO	0.15	16		1,408		
11CR.20971.19	Wilkes	191	SR 1369	FROM SR 1372 TO SR 1416	1	NO	0.06	18		634		
11CR.20971.19	Wilkes	192	SR 1416	FROM DEAD END TO DEAD END	1	NO	0.14	18		1,478		
11CR.20971.19	Wilkes	193	SR 1436	FROM SR 1372 TO DEAD END	1	NO	0.16	16		1,502		
11CR.20971.19	Wilkes	194	SR 1446	FROM SR 1326 TO DEAD END	1	NO	0.08	16		951		
11CR.20971.19	Wilkes	195	SR 1511	FROM SR 1372 TO DEAD END	1	NO	0.16	18		1,690		
11CR.20971.19	Wilkes	196	SR 1525	FROM NC 18 TO SR 1526	1	NO	0.26	16		2,441		
11CR.20971.19	Wilkes	197	SR 1526	FROM SR 1525 TO DEAD END	1	NO	0.1	16		939		
11CR.20971.19	Wilkes	198	SR 1594	FROM SR 1536 TO DEAD END	1	NO	0.05	20		587		
11CR.20971.19	Wilkes	199	SR 1600	FROM NC 18 TO SR 1601	1	NO	0.36	20		4,224		
11CR.20971.19	Wilkes	200	SR 1601	FROM SR 1600 TO DEAD END	1	NO	0.06	20		904		
11CR.20971.19	Wilkes	201	SR 1635	FROM NC 16 TO DEAD END	1	NO	0.13	16		1,220		
11CR.20971.19	Wilkes	202	SR 1715	FROM SR 1703 TO SR 1716	1	NO	1.4	18		14,784		

PROJECT NO.	SHEET NO.	TOTAL NO.
11CR.20971.19		

SUMMARY OF QUANTITIES

PROJECT	COUNTY	MAP	ROUTE	DESCRIPTION	TYP	FINAL SURFACE TESTING REQUIRED	LENGTH	WIDTH	ASPHALT SURFACE TREATMENT, MAT & SEAL	ASPHALT SURFACE TREATMENT, SPLIT SEAL	ASPHALT SURFACE TREATMENT, TRIPLE SEAL	ASPHALT SURFACE TREATMENT, TRIPLE SEAL (LIGHTWEIGHT AGGREGATE)
11CR.20971.19	Wilkes	203	SR 1729	FROM NC 18 TO NC 18	1	NO	1.16	16	10,889			
11CR.20971.19	Wilkes	204	SR 1730	FROM PIPE TO RIDGE	1	NO	1.02	18	10,771			
11CR.20971.19	Wilkes	205	SR 1730	FROM BRIDGE TO SR 1728	1	NO	2.12	18	22,387			
11CR.20971.19	Wilkes	206	SR 1759	FROM NC 18 TO NC 18	1	NO	0.47	18	4,963			
11CR.20971.19	Wilkes	207	SR 1773	FROM SR 1705 TO DEAD END	1	NO	0.31	20	3,837			
11CR.20971.19	Wilkes	208	SR 1776	FROM SR 1773 TO DEAD END	1	NO	0.26	20	3,251			
11CR.20971.19	Wilkes	209	SR 1777	FROM NC 18 TO SR 1778	1	NO	0.27	20	3,168			
11CR.20971.19	Wilkes	210	SR 1778	FROM SR 1777 TO DEAD END	1	NO	0.31	20	3,637			
11CR.20971.19	Wilkes	211	SR 1779	FROM SR 1792 TO DEAD END	1	NO	0.15	20	1,760			
11CR.20971.19	Wilkes	212	SR 1799	FROM SR 1713 TO EOM	1	NO	0.2	16	1,877			
11CR.20971.19	Wilkes	213	SR 1916	FROM SR 1913 TO PVMT CHANGE	1	NO	1.1	18	11,616			
11CR.20971.19	Wilkes	214	SR 1916	FROM PVMT CHANGE TO SR 1917	1	NO	0.98	18	10,349			
11CR.20971.19	Wilkes	215	SR 1920	FROM SR 1753 TO DEAD END	1	NO	0.33	16	3,098			
11CR.20971.19	Wilkes	216	SR 1923	FROM SR 1917 TO DEAD END	1	NO	0.54	16	5,069			
11CR.20971.19	Wilkes	217	SR 1926	FROM SR 1752 TO SR 1924	1	NO	0.94	18	9,926			
11CR.20971.19	Wilkes	218	SR 1930	FROM SR 1752 TO SR 1931	1	NO	1.18	20	13,845			
TOTAL FOR PROJ NO. 11CR.20971.19							30.14		323,399			
GRAND TOTAL							30.14		323,399			

PROJECT NO.	SHEET NO.	TOTAL NO.
11CR.20971.19		

THERMOPLASTIC AND PAINT QUANTITIES

PROJECT NO	COUNTY	MAP NO	ROUTE	DESCRIPTION	LENGTH	WIDTH	4810000000-E				4835000000-E	4840000000-N	4905000000-N
							4" WHITE PAINT	4" YELLOW PAINT	24" WHITE PAINT	PAINT MSG SCHOOL			
11CR.20971.19	Wilkes	169	SR 1311	FROM SR 1145 TO END PVMT	0.93	18	19,642	19,642					
11CR.20971.19	Wilkes	170	SR 1311	FROM BEGIN PVMT TO SR 1304	0.95	18	20,064	20,064					
11CR.20971.19	Wilkes	171	SR 2343	FROM SR 2355 TO DEAD END	0.63	18							
11CR.20971.19	Wilkes	172	SR 2361	FROM 2329 TO DEAD END	0.11	20							
11CR.20971.19	Wilkes	173	SR 2377	FROM SR 2329 TO DEAD END	0.46	16							
11CR.20971.19	Wilkes	174	SR 2391	FROM NC 268 TO EOM	0.57	18							
11CR.20971.19	Wilkes	175	SR 2405	FROM SR 2400 TO SR 2403	0.53	18	11,194	11,194					
11CR.20971.19	Wilkes	176	SR 2409	FROM YADKIN CO LINE TO SR 2403	0.53	20	11,194	11,194					
11CR.20971.19	Wilkes	177	SR 2417	FROM SR 2416 TO DEAD END	1.02	16	21,542	21,542					
11CR.20971.19	Wilkes	178	SR 2418	FROM SR 2431 EAST 0.96 MILES	0.96	18	20,275	20,275					
11CR.20971.19	Wilkes	179	SR 2440	FROM SR 2355 TO EOM	0.28	18							
11CR.20971.19	Wilkes	180	SR 2534	FROM NC 16 TO DEAD END	0.49	20							
11CR.20971.19	Wilkes	181	SR 1107	FROM NC 18 TO SR 1106	0.48	18	10,138	10,138	30				
11CR.20971.19	Wilkes	182	SR 1141	FROM NC 268 TO EOM	0.51	18	10,771	10,771					
11CR.20971.19	Wilkes	183	SR 1157	FROM SR 1155 TO SR 1155	1.56	20	32,947	32,947					
11CR.20971.19	Wilkes	184	SR 1171	FROM US 421 TO EOM	1.24	16	26,189	26,189					
11CR.20971.19	Wilkes	185	SR 1196	FROM SR 1154 TO EOM	0.83	16							
11CR.20971.19	Wilkes	186	SR 1250	FROM SR 1147 TO DEAD END	0.36	18							
11CR.20971.19	Wilkes	187	SR 1301	FROM US 221 TO BRIDGE	0.98	20	20,698	20,698					
11CR.20971.19	Wilkes	188	SR 1301	FROM BRIDGE TO SR 1300	1.89	20	39,917	39,917					
11CR.20971.19	Wilkes	189	SR 1326	FROM SR 1325 TO SR 1446	0.38	20							
11CR.20971.19	Wilkes	190	SR 1336	FROM SR 1372 TO DEAD END	0.15	16							
11CR.20971.19	Wilkes	191	SR 1369	FROM SR 1372 TO SR 1416	0.06	18							
11CR.20971.19	Wilkes	192	SR 1416	FROM DEAD END TO DEAD END	0.14	18							
11CR.20971.19	Wilkes	193	SR 1436	FROM SR 1372 TO DEAD END	0.16	16							
11CR.20971.19	Wilkes	194	SR 1446	FROM SR 1326 TO DEAD END	0.08	16							
11CR.20971.19	Wilkes	195	SR 1511	FROM SR 1372 TO DEAD END	0.16	18							
11CR.20971.19	Wilkes	196	SR 1525	FROM NC 18 TO SR 1526	0.26	16							
11CR.20971.19	Wilkes	197	SR 1526	FROM SR 1525 TO DEAD END	0.1	16							
11CR.20971.19	Wilkes	198	SR 1594	FROM SR 1536 TO DEAD END	0.05	20							
11CR.20971.19	Wilkes	199	SR 1600	FROM NC 18 TO SR 1601	0.36	20							
11CR.20971.19	Wilkes	200	SR 1601	FROM SR 1600 TO DEAD END	0.06	20							
11CR.20971.19	Wilkes	201	SR 1635	FROM NC 16 TO DEAD END	0.13	16							
11CR.20971.19	Wilkes	202	SR 1715	FROM SR 1703 TO SR 1716	1.4	18	29,568	29,568					
11CR.20971.19	Wilkes	203	SR 1729	FROM NC 18 TO NC 18	1.16	16							
11CR.20971.19	Wilkes	204	SR 1730	FROM PIPE TO RIDGE	1.02	18	21,542	21,542					

PROJECT NO.	SHEET NO.	TOTAL NO.
11CR.20971.19		

THERMOPLASTIC AND PAINT QUANTITIES

PROJECT NO	COUNTY	MAP NO	ROUTE	DESCRIPTION	LENGTH	WIDTH	4810000000-E		4835000000-E	4840000000-N	4905000000-N
							4" WHITE PAINT LF	4" YELLOW PAINT LF	24" WHITE PAINT LF	PAINT MSG SCHOOL EA	SNOW PLOWABLE MARKERS EA
11CR.20971.19	Wilkes	205	SR 1730	FROM BRIDGE TO SR 1728	2.12	18	44,774	44,774			
11CR.20971.19	Wilkes	206	SR 1759	FROM NC 18 TO NC 18	0.47	18					
11CR.20971.19	Wilkes	207	SR 1773	FROM SR 1705 TO DEAD END	0.31	20					
11CR.20971.19	Wilkes	208	SR 1776	FROM SR 1773 TO DEAD END	0.26	20					
11CR.20971.19	Wilkes	209	SR 1777	FROM NC 18 TO SR 1778	0.27	20					
11CR.20971.19	Wilkes	210	SR 1778	FROM SR 1777 TO DEAD END	0.31	20					
11CR.20971.19	Wilkes	211	SR 1779	FROM SR 1792 TO DEAD END	0.15	20					
11CR.20971.19	Wilkes	212	SR 1799	FROM SR 1713 TO EOM	0.2	16					
11CR.20971.19	Wilkes	213	SR 1916	FROM SR 1913 TO PVMT CHANGE	1.1	18	23,232	23,232			
11CR.20971.19	Wilkes	214	SR 1916	FROM PVMT CHANGE TO SR 1917	0.98	18	20,698	20,698			
11CR.20971.19	Wilkes	215	SR 1920	FROM SR 1753 TO DEAD END	0.33	16					
11CR.20971.19	Wilkes	216	SR 1923	FROM SR 1917 TO DEAD END	0.54	16					
11CR.20971.19	Wilkes	217	SR 1926	FROM SR 1752 TO SR 1924	0.94	18	19,853	19,853			
11CR.20971.19	Wilkes	218	SR 1930	FROM SR 1752 TO SR 1931	1.18	20	24,922	24,922			
TOTAL FOR PROJ NO. 11CR.20971.19					30.14		429,160	429,160	30		
GRAND TOTAL					30.14		429,160	429,160	30		
							858,320	858,320			

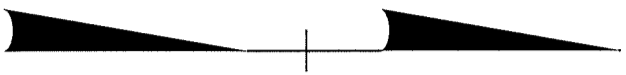
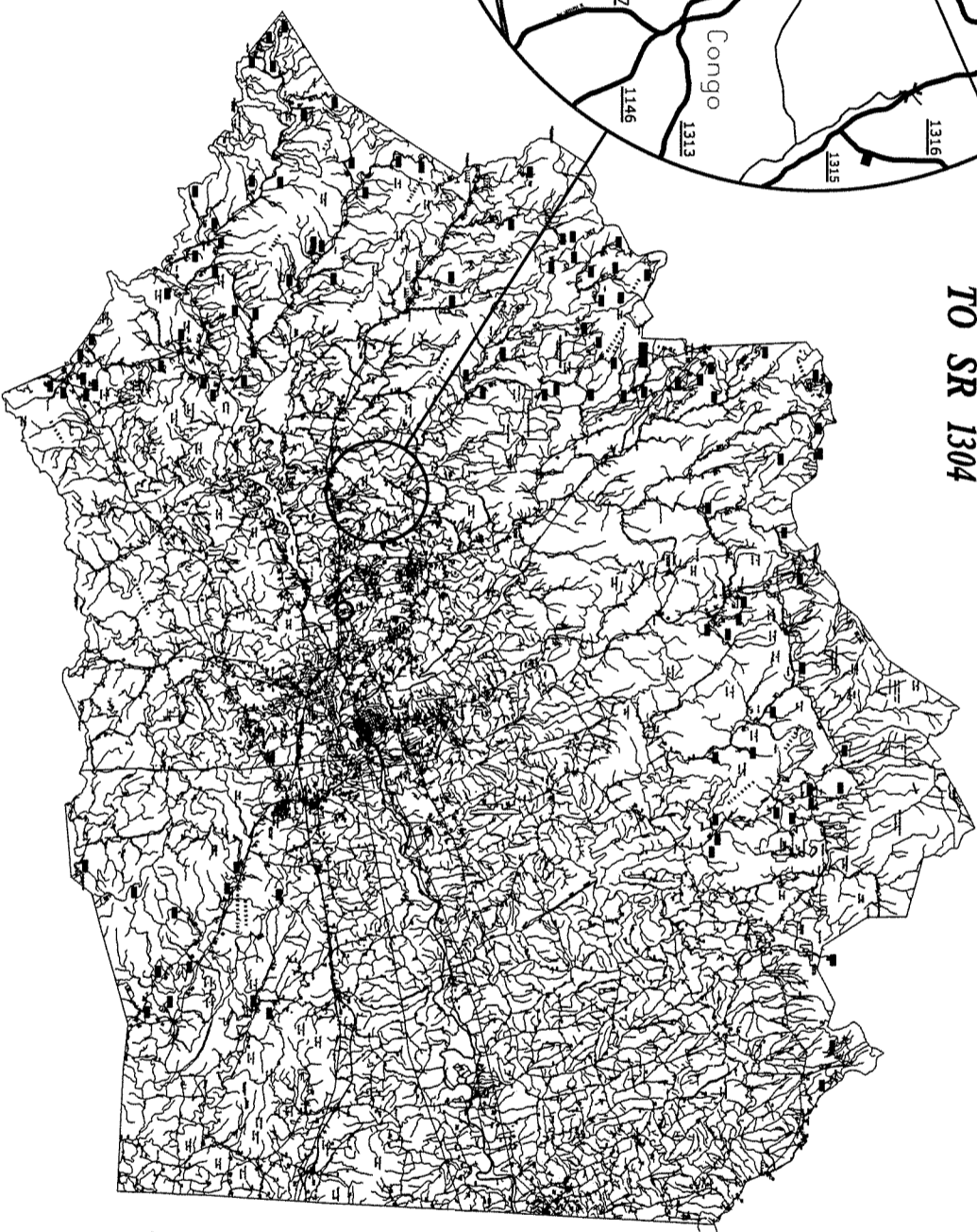
STATE OF NORTH CAROLINA
DIVISION OF HIGHWAYS

WILKES COUNTY

ASPHALT SURFACE TREATMENT

MAP #170 SR 1311
FROM BEGIN PVMT
TO SR 1304

MAP #169 SR 1311
FROM SR 1145 TO END PVMT

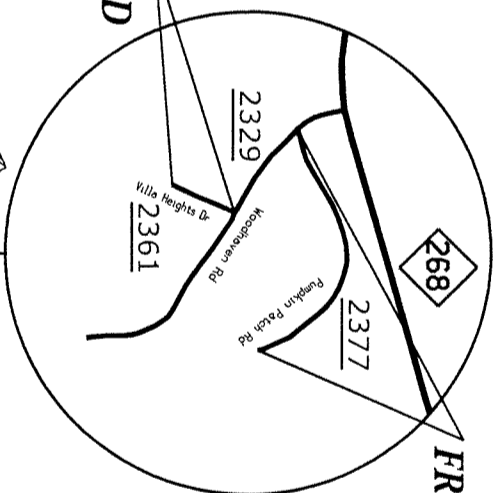


STATE OF NORTH CAROLINA
DIVISION OF HIGHWAYS

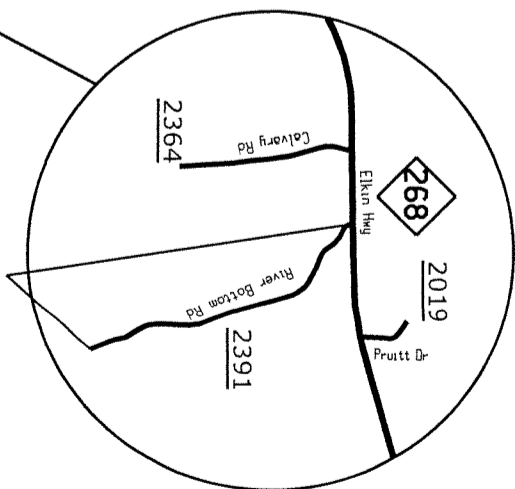
WILKES COUNTY

ASPHALT SURFACE TREATMENT

MAP #172 SR 2361
FROM SR 2329 TO DEAD END

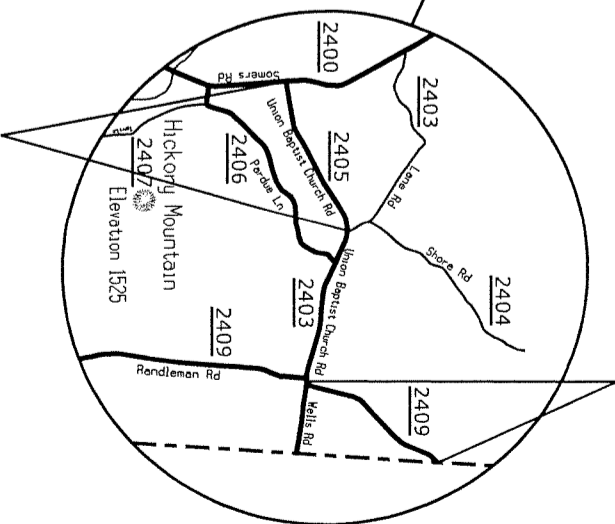


MAP #173 SR 2317
FROM SR 2329 TO DEAD END

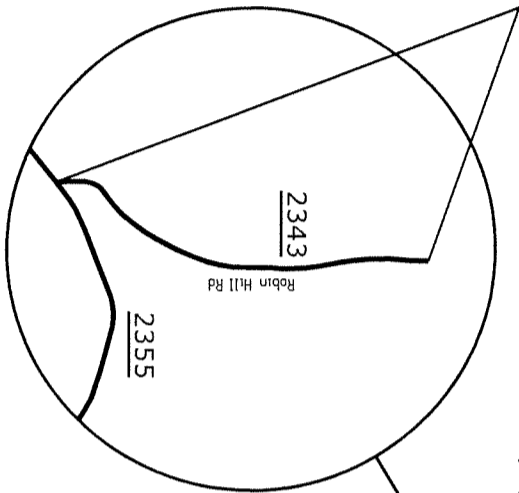


MAP #174 SR 2391
FROM NC 268 TO EOM

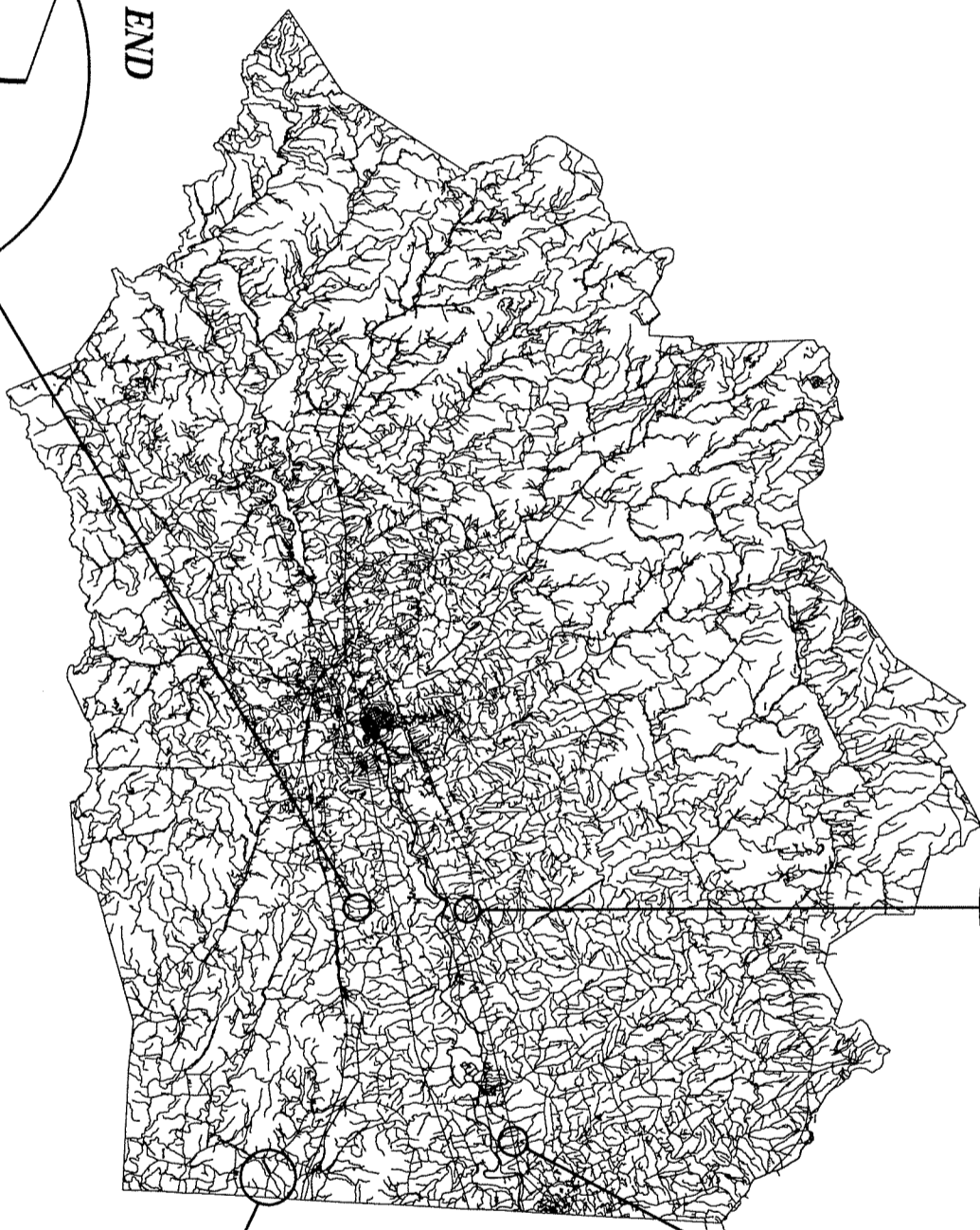
MAP #176 SR 2409
FROM YADKIN COUNTY TO SR 2403



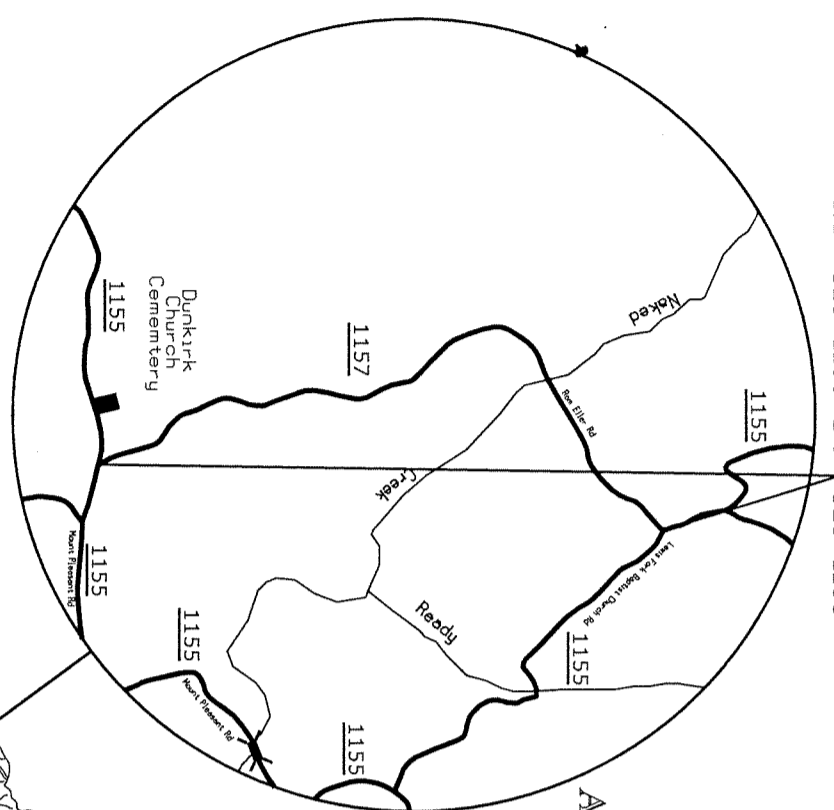
MAP #175 SR 2405
FROM SR 2400 TO SR 2403



MAP #171 SR 2343
FROM SR 2355 TO DEAD END



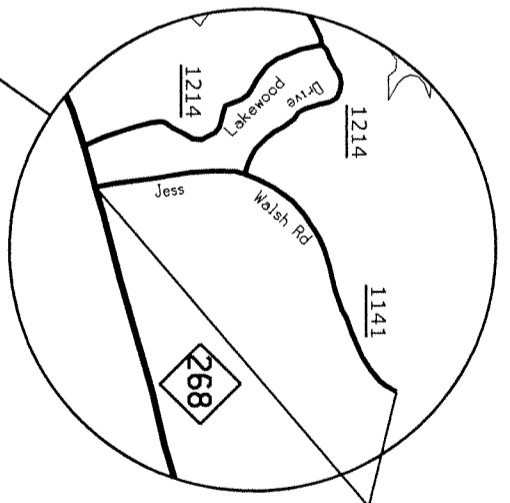
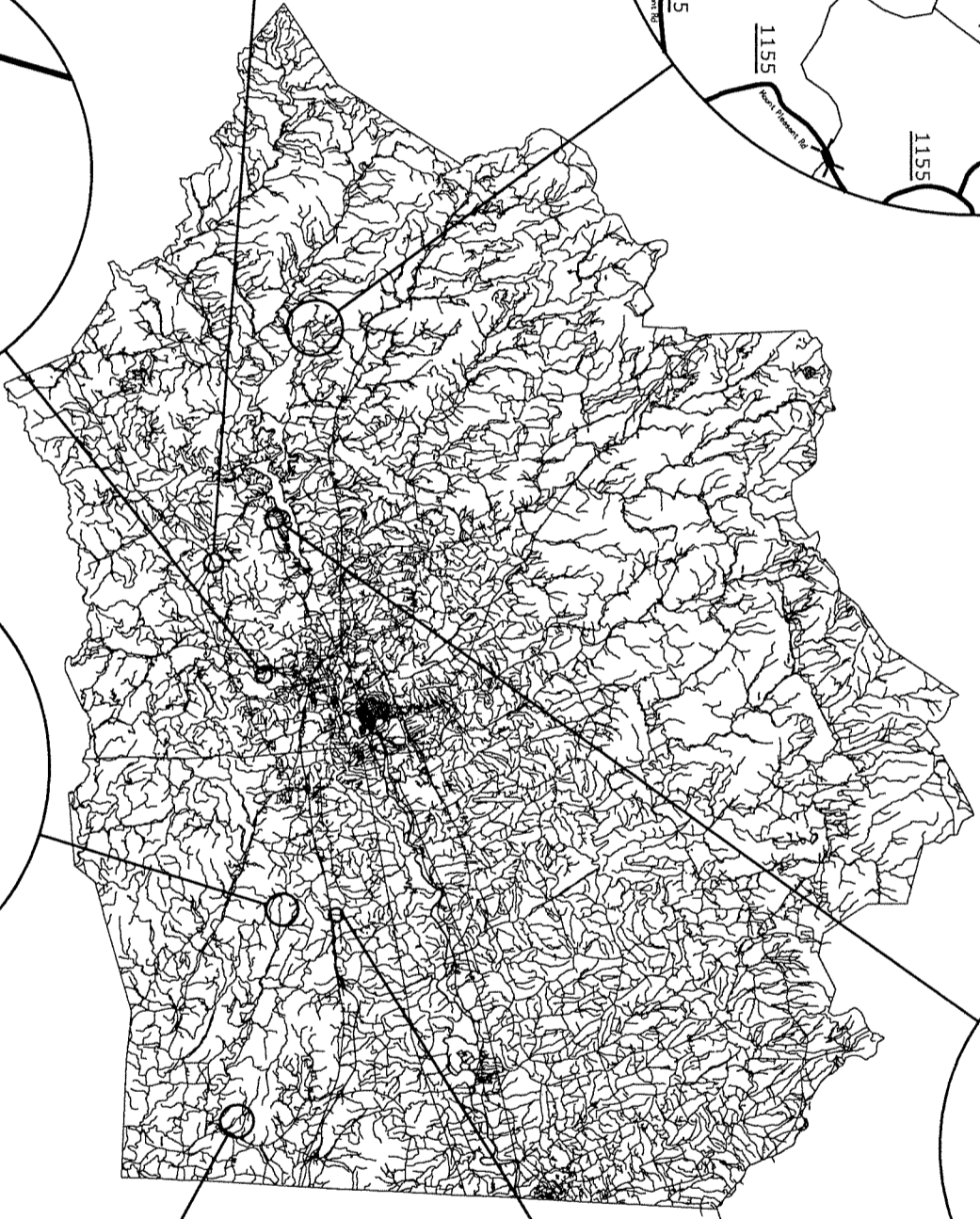
MAP #183 SR 1157
FROM SR 1155 TO SR 1155



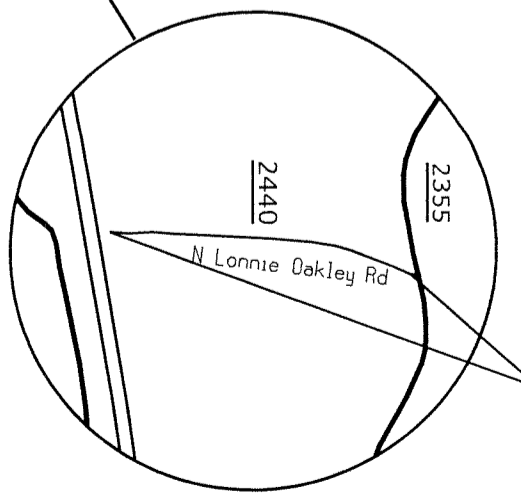
STATE OF NORTH CAROLINA
DIVISION OF HIGHWAYS

WILKES COUNTY

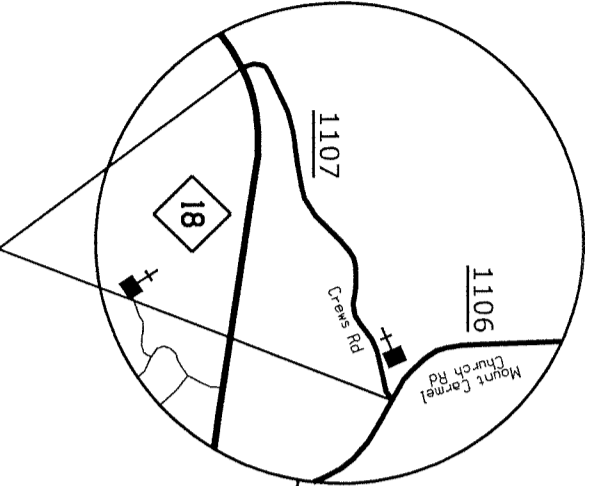
ASPHALT SURFACE TREATMENT



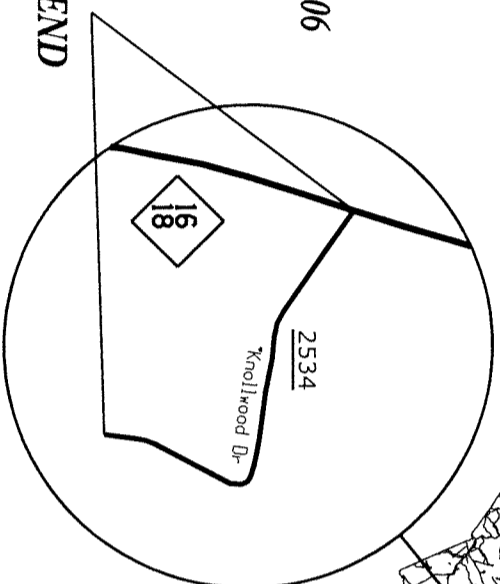
MAP #182 SR 1141
FROM NC 268 TO EOM



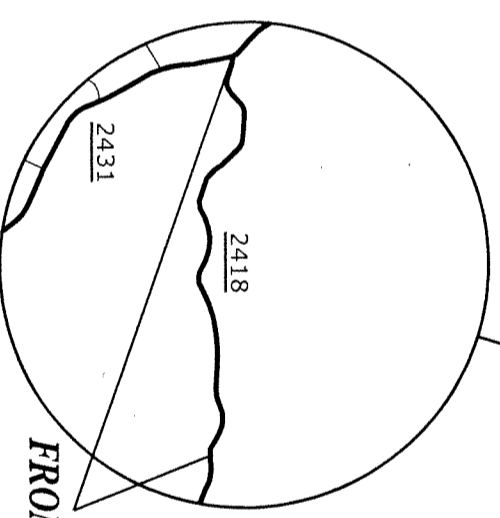
MAP #179 SR 2440
FROM SR 2355 TO EOM



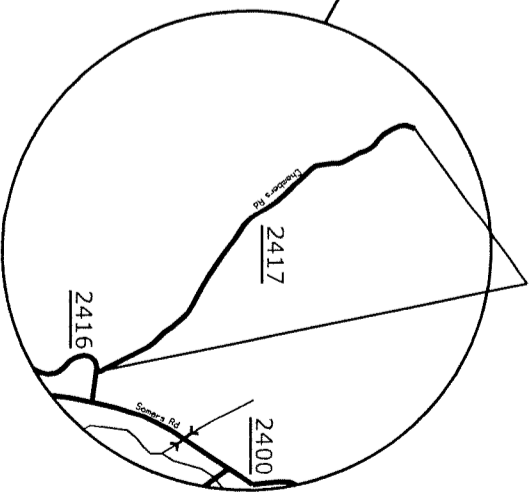
MAP #181 SR 1107
FROM NC 18 TO SR 1106



MAP #180 SR 2534
FROM NC 16 TO DEAD END

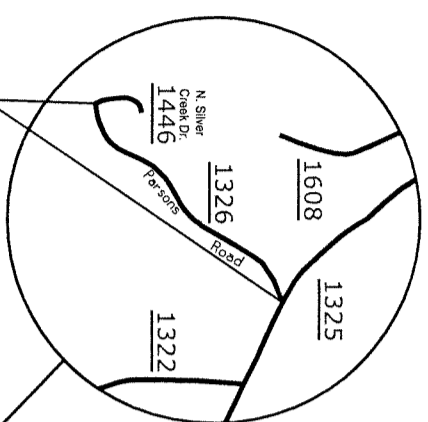


MAP #178 SR 2418
FROM SR 2431 TO EAST 0.96 MI



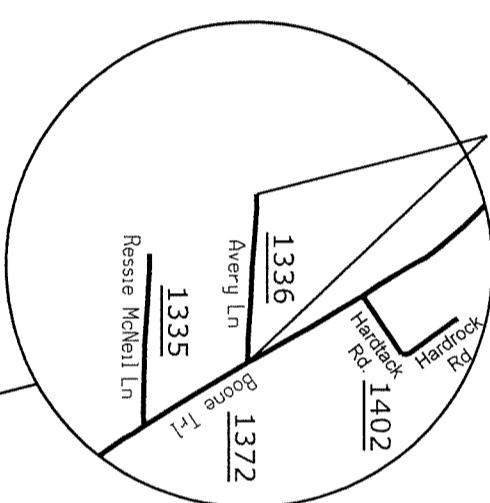
MAP #177 SR 2417
FROM SR 2416 TO DEAD END



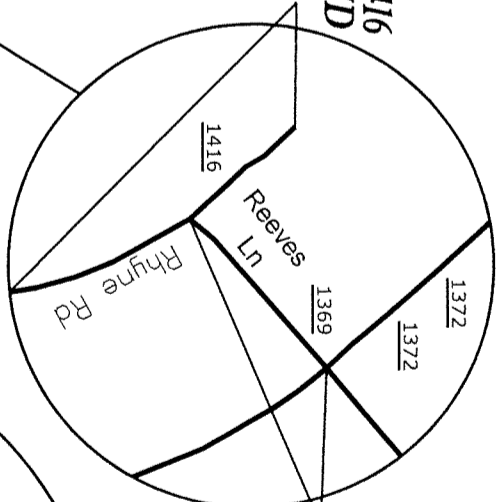


MAP #189 SR 1326
FROM SR 1325 TO SR 1446

MAP #190 SR 1336
FROM SR 1372 TO DEAD END

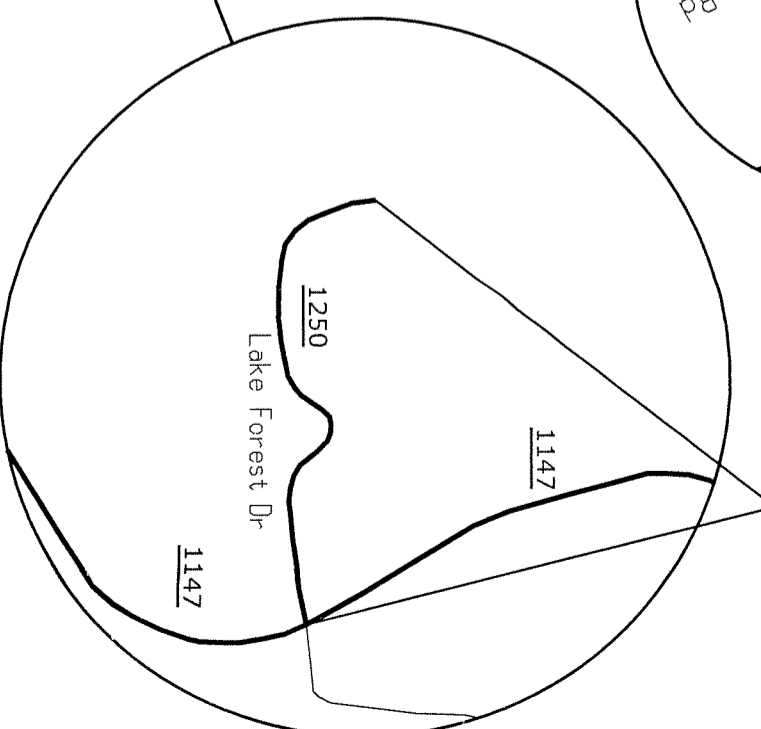


MAP #192 SR 1416
FROM DEAD END TO DEAD END

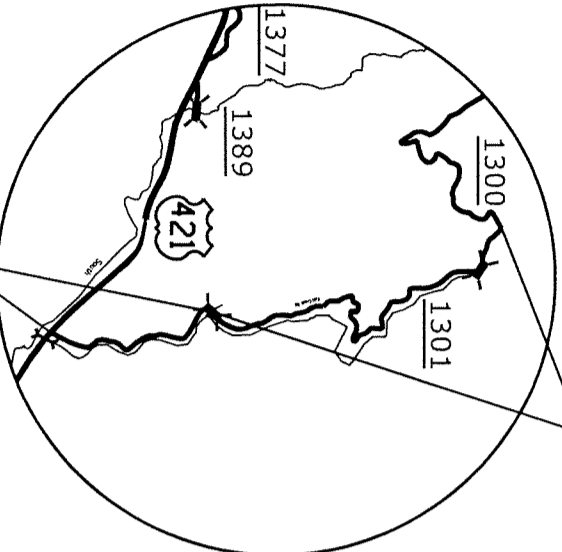
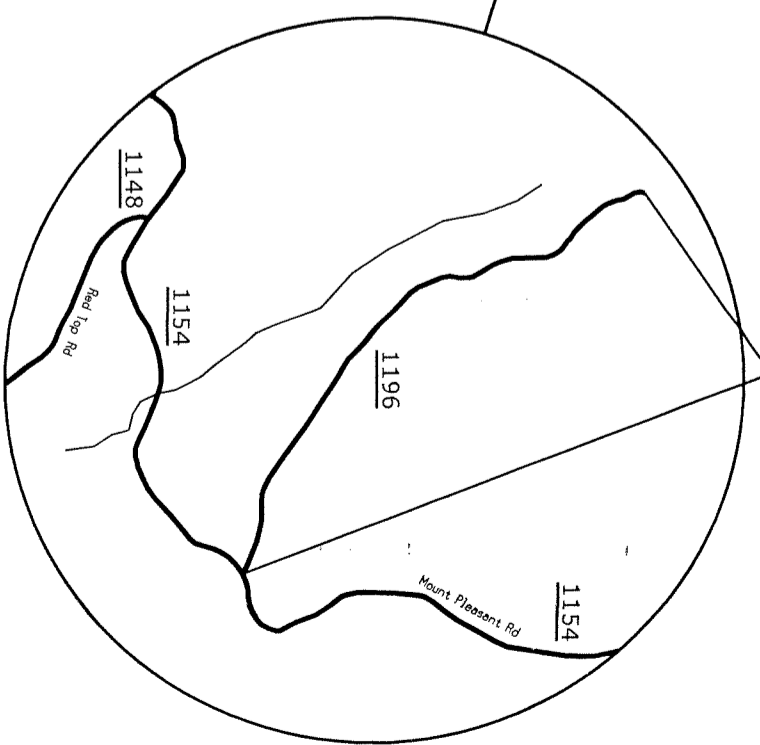


MAP #191 SR 1369
FROM SR 1372 TO SR 1416

MAP #186 SR 1250
FROM SR 1147 TO DEAD END



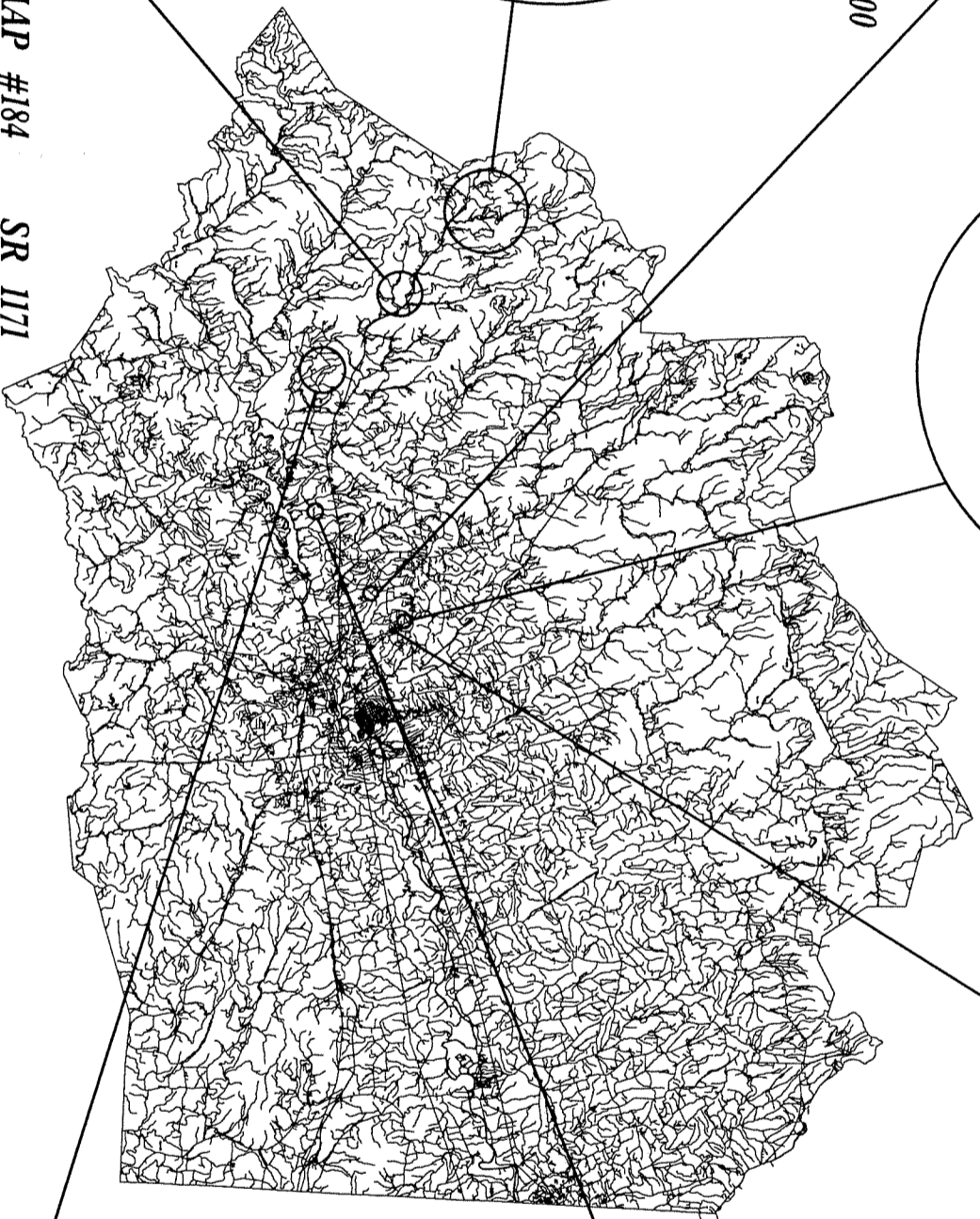
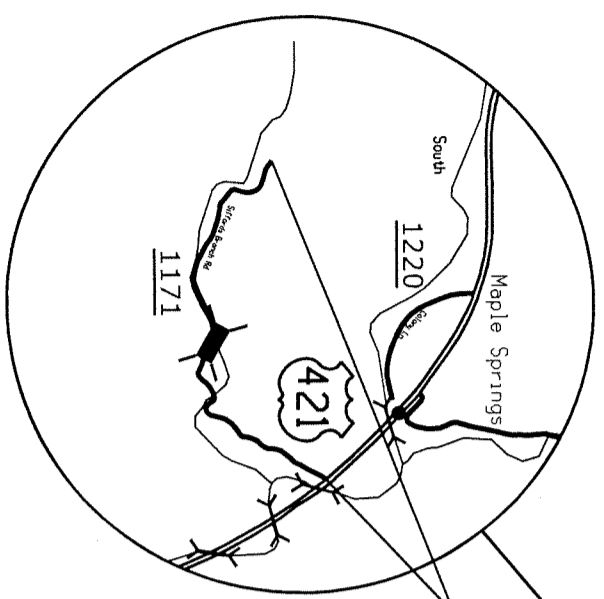
MAP #185 SR 1196
FROM SR 1154 TO EOM



MAP #188 SR 1301
FROM BRIDGE TO SR 1300

MAP #187 SR 1301
FROM US 421 TO BRIDGE

MAP #184 SR 1171
FROM US 421 TO EOM



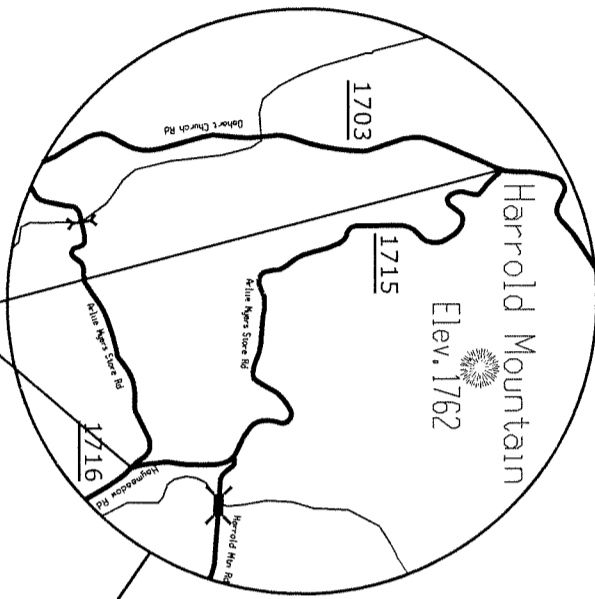
STATE OF NORTH CAROLINA
DIVISION OF HIGHWAYS

WILKES COUNTY

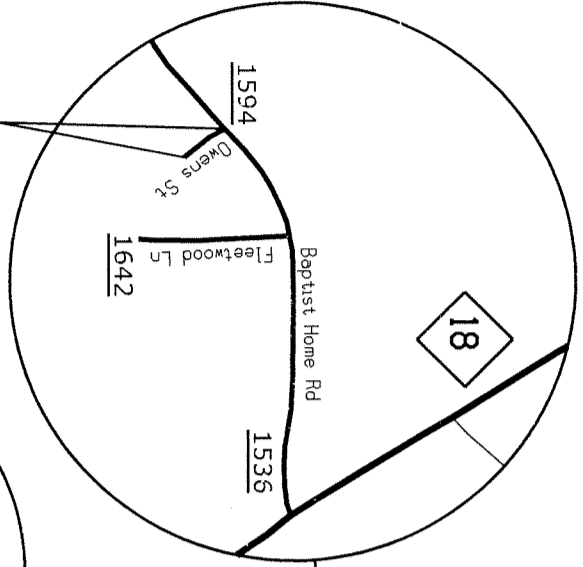
ASPHALT SURFACE TREATMENT

STATE OF NORTH CAROLINA
DIVISION OF HIGHWAYS
WILKES COUNTY

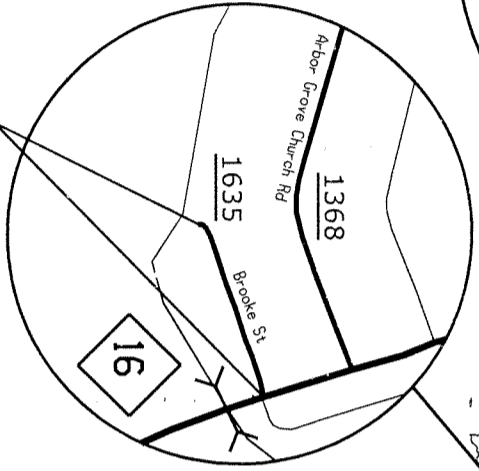
ASPHALT SURFACE TREATMENT



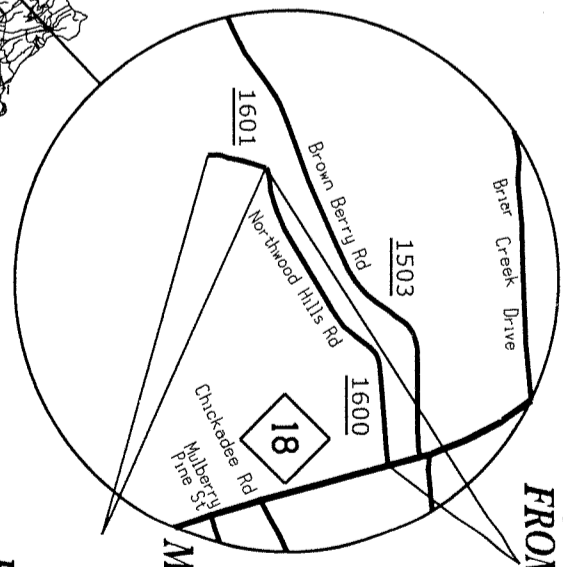
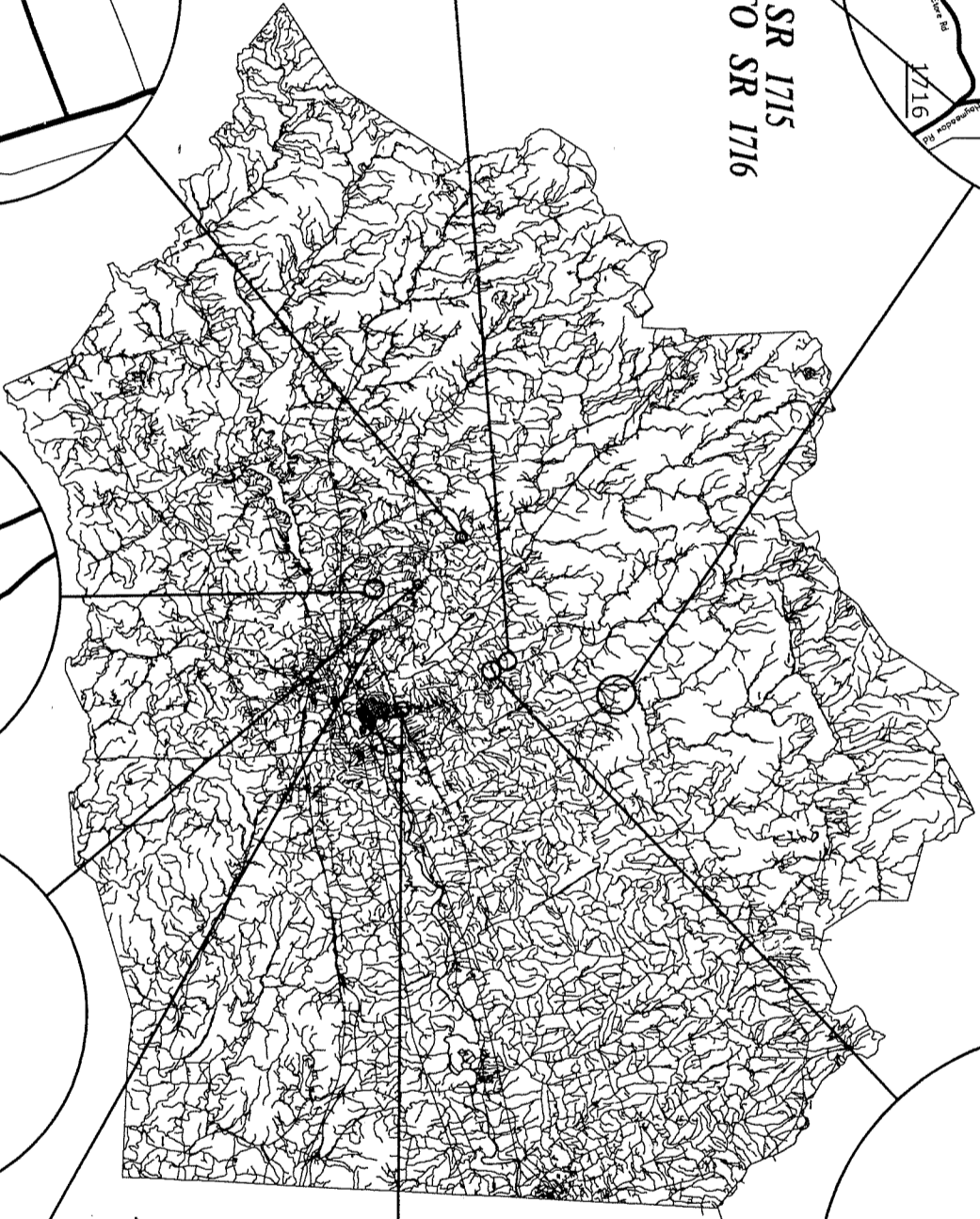
MAP #202 SR 1715
FROM SR 1703 TO SR 1716



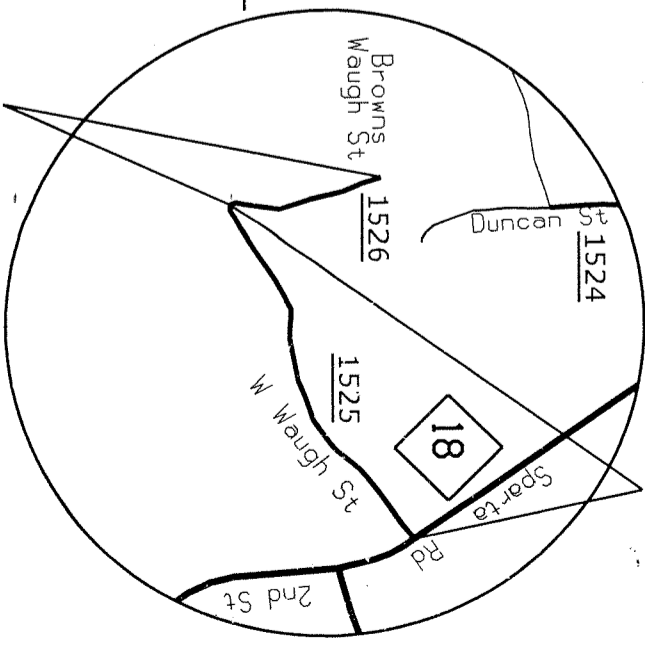
MAP #198 SR 1594
FROM SR 1536 TO DEAD END



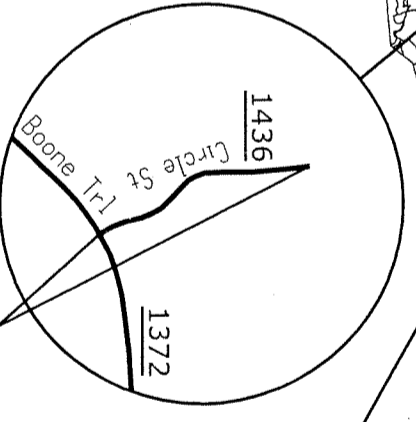
MAP #201 SR 1635
FROM NC 16 TO DEAD END



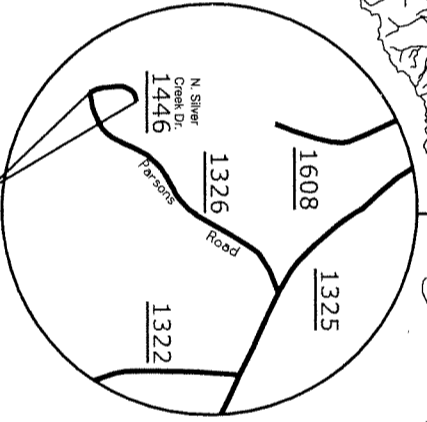
MAP #199 SR 1600
FROM NC 18 TO SR 1601



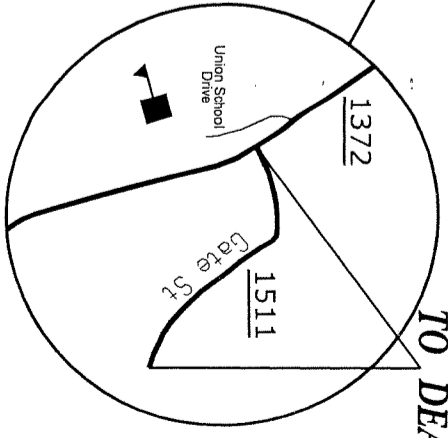
MAP #196 SR 1525
FROM NC 18 TO SR 1526



MAP #193 SR 1436
FROM SR 1372 TO DEAD END



MAP #194 SR 1446
FROM SR 1326 TO DEAD END

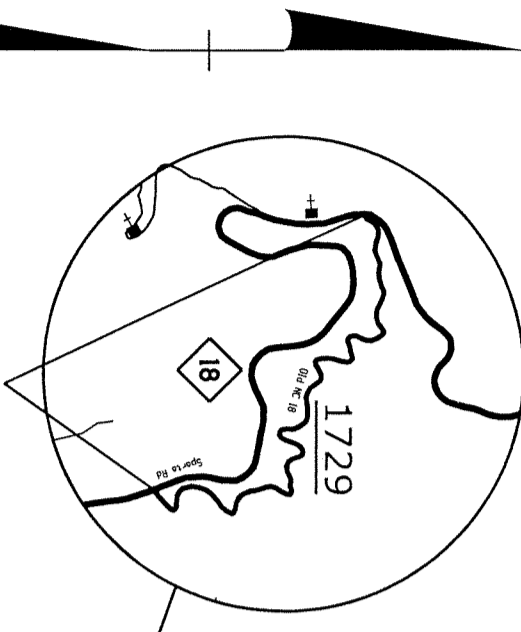


MAP #195 SR 1511
FROM SR 1372 TO DEAD END

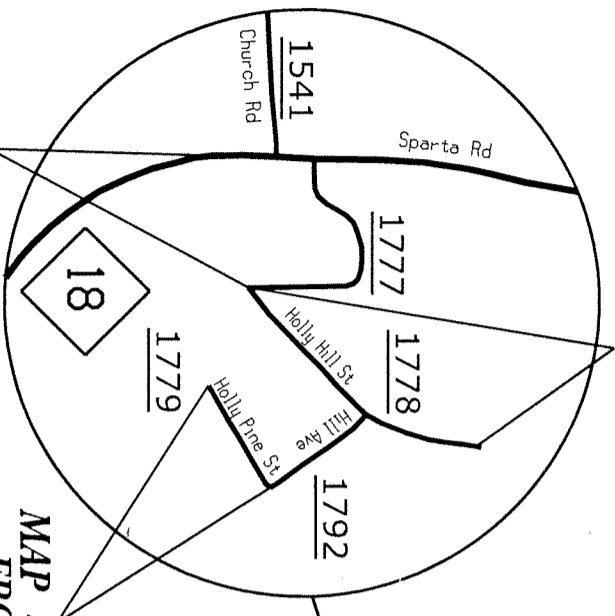
STATE OF NORTH CAROLINA
DIVISION OF HIGHWAYS

WILKES COUNTY

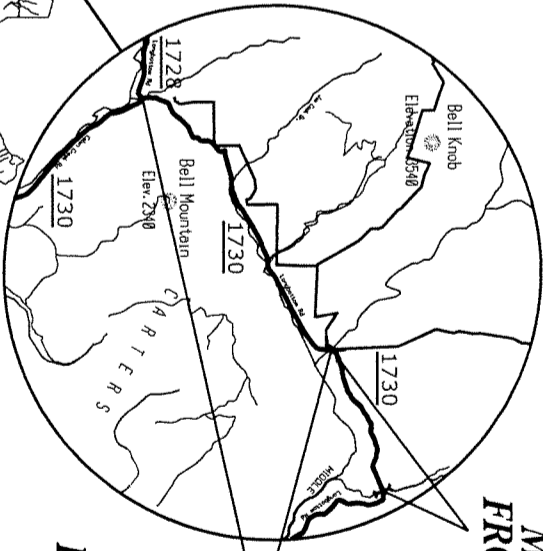
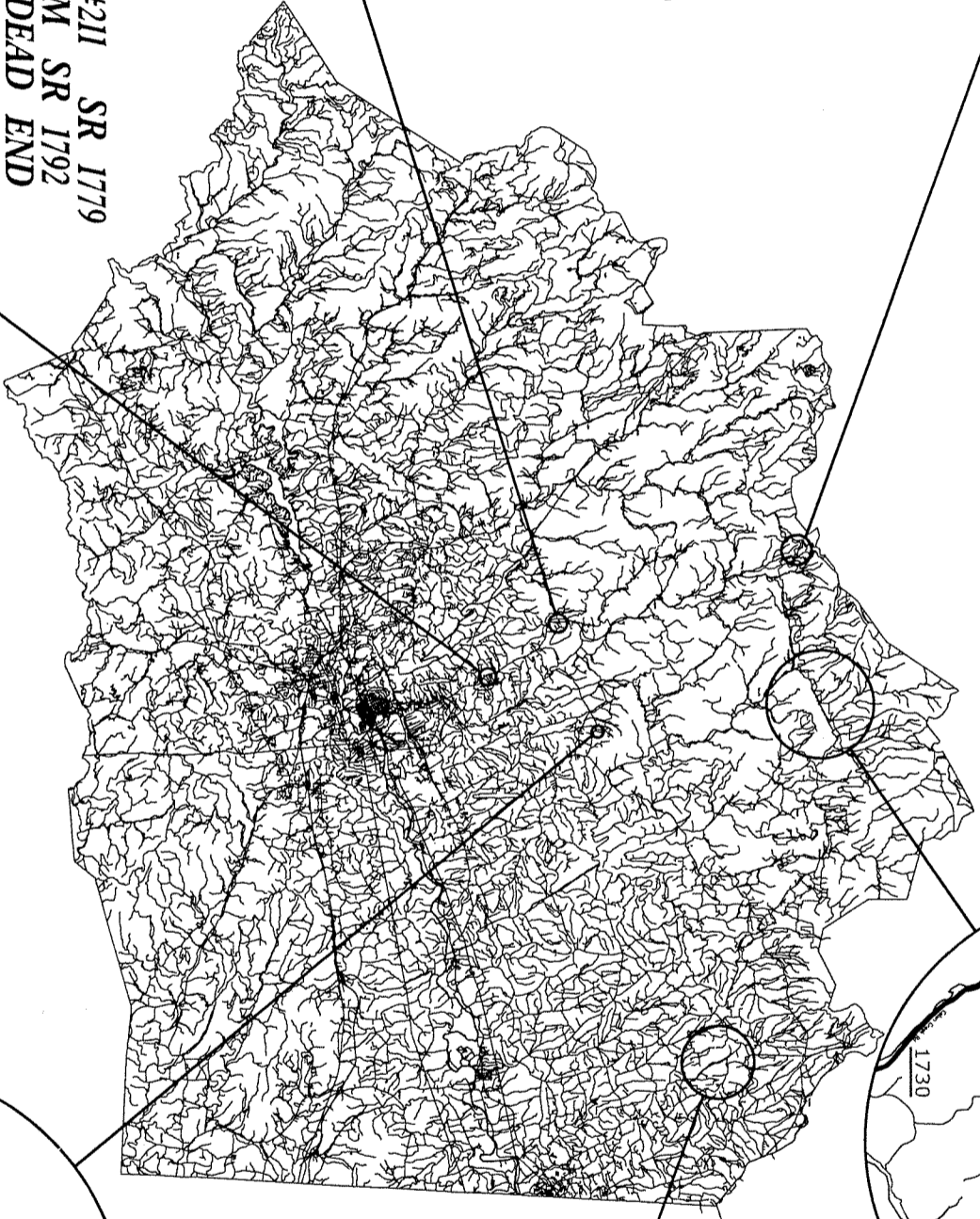
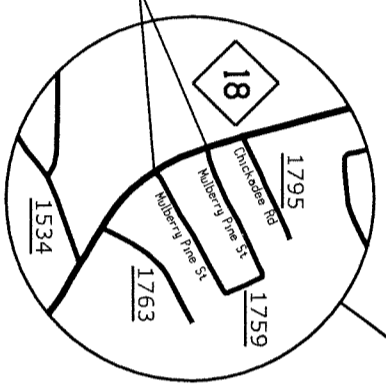
ASPHALT SURFACE TREATMENT



MAP #210 SR 1778
FROM SR 1777 TO DEAD END

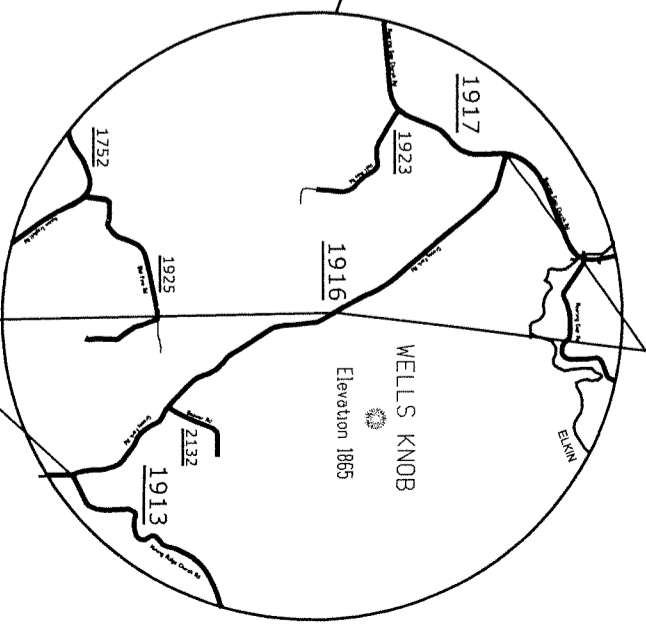


MAP #211 SR 1779
FROM SR 1792
TO DEAD END

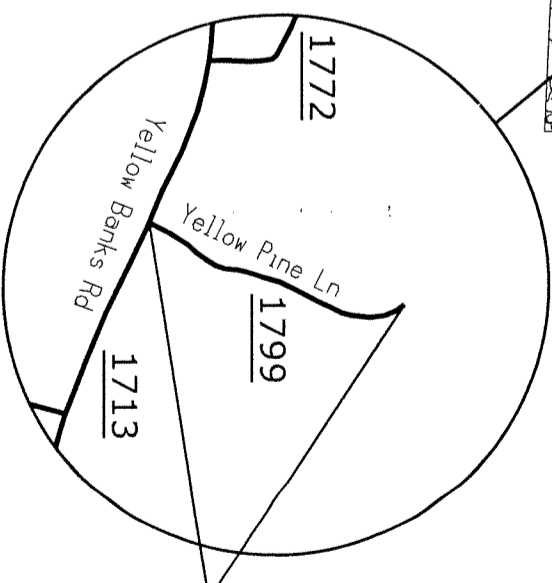


MAP #205 SR 1730
FROM BRIDGE TO SR 1728

MAP #214 SR 1916
FROM PVMT CHANGE TO SR 1917



MAP #212 SR 1799
FROM SR 1713
TO EOM

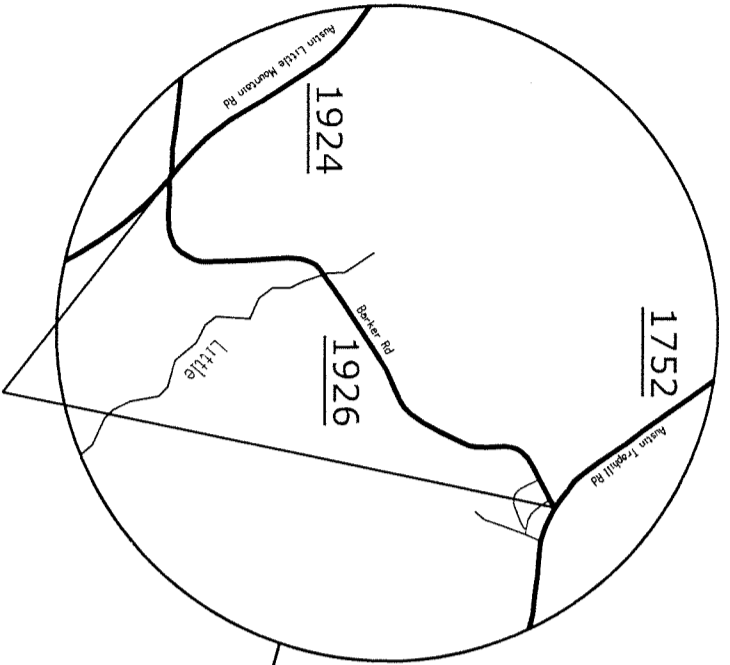
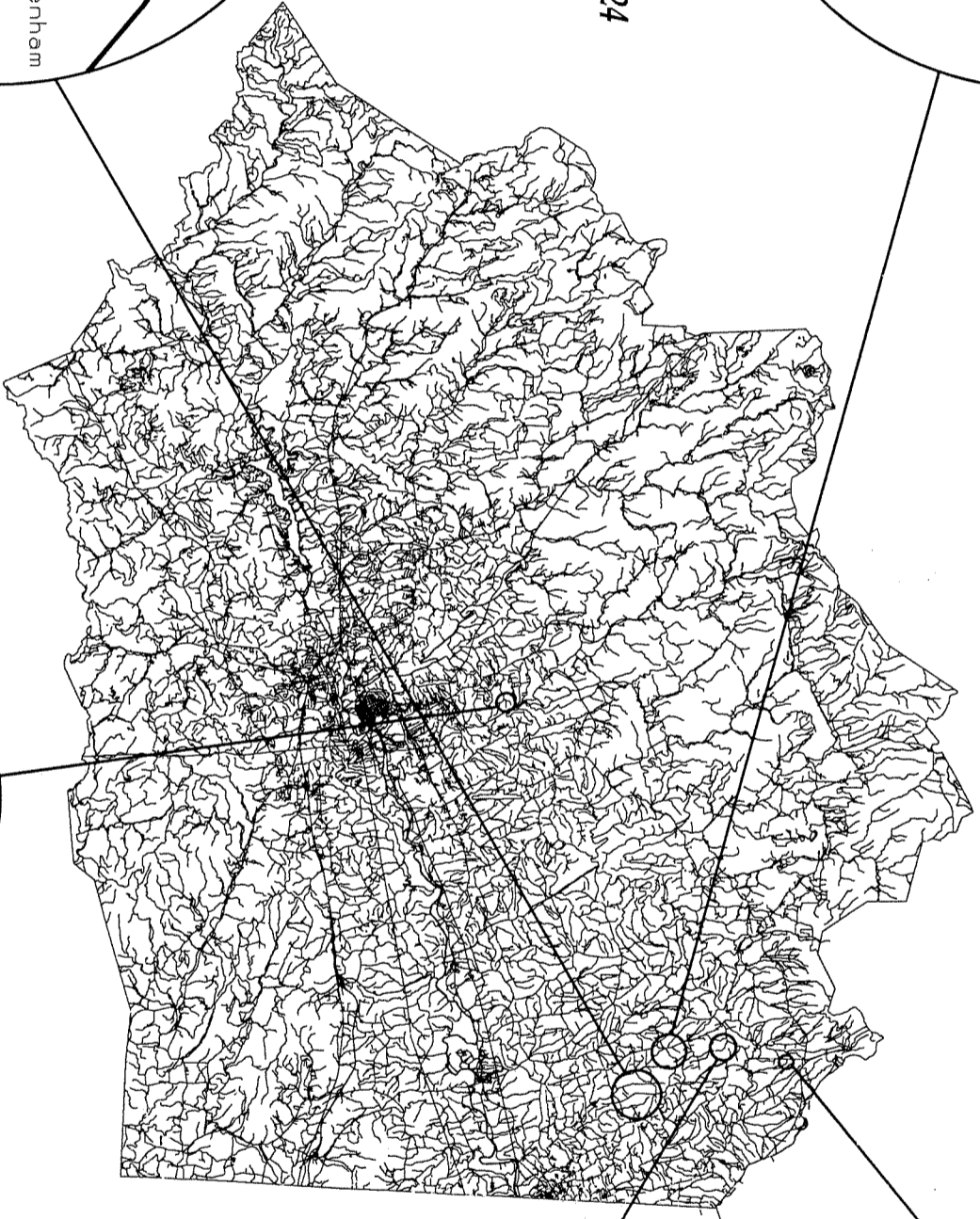


MAP #212 SR 1799
FROM SR 1713
TO EOM

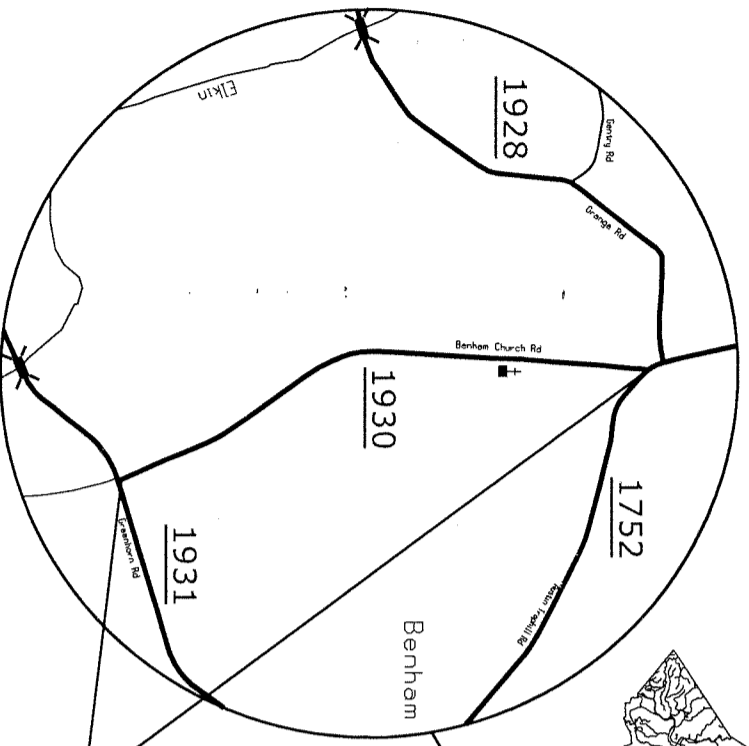
STATE OF NORTH CAROLINA
DIVISION OF HIGHWAYS

WILKES COUNTY

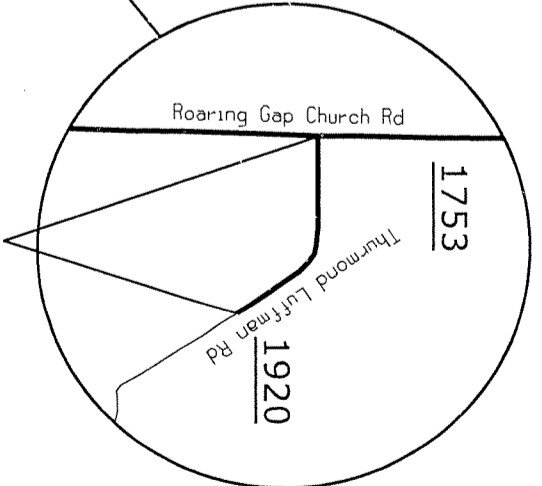
ASPHALT SURFACE TREATMENT



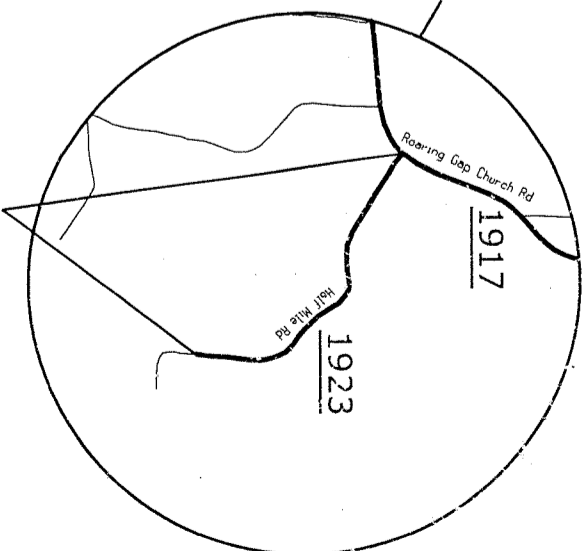
MAP #217 SR 1926
FROM SR 1752 TO SR 1924



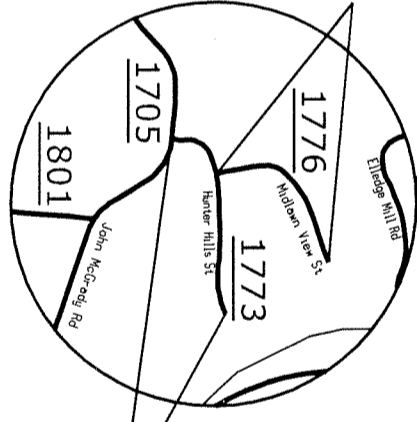
MAP #218 SR 1930
FROM SR 1752 TO SR 1931



MAP #215 SR 1920
FROM SR 1753 TO DEAD END

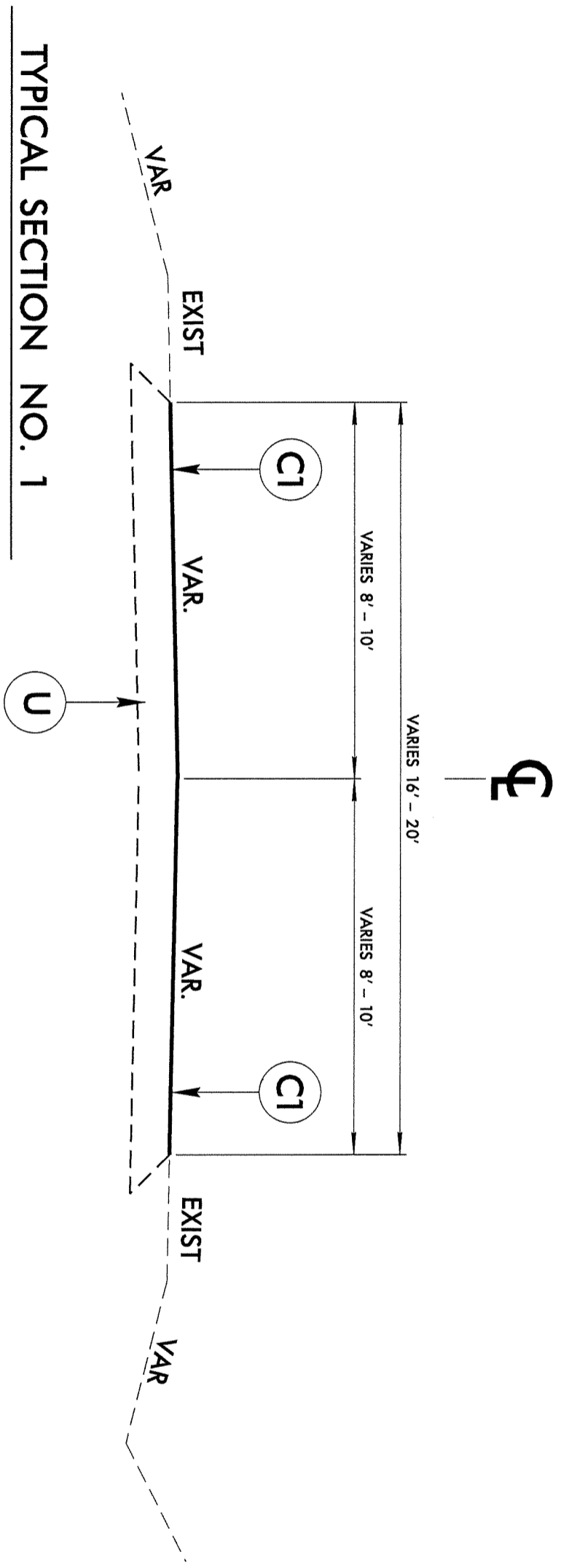


MAP #216 SR 1923
FROM SR 1917 TO DEAD END



MAP #207 SR 1773
FROM SR 1705 TO DEAD END

MAP #208 SR 1776
FROM SR 1773
TO DEAD END



TYPICAL SECTION NO. 1

PAVEMENT SCHEDULE	
C1	PROP. ASPHALT SURFACE TREATMENT, SPLIT SEAL
U	EXISTING PAVEMENT

WILKES COUNTY
ASPHALT SURFACE TREATMENT
RESURFACING


DIVISION II

REVISIONS	INT.	DATE

SCALE: N/A DATE: 3/2012

PREPARED BY: J. L. LANS
REVIEWED BY:

N.C. DEPARTMENT of TRANSPORTATION
DIVISION of HIGHWAYS
DIVISION ELEVEN



DIVISION OF HIGHWAYS
STATE OF NORTH CAROLINA