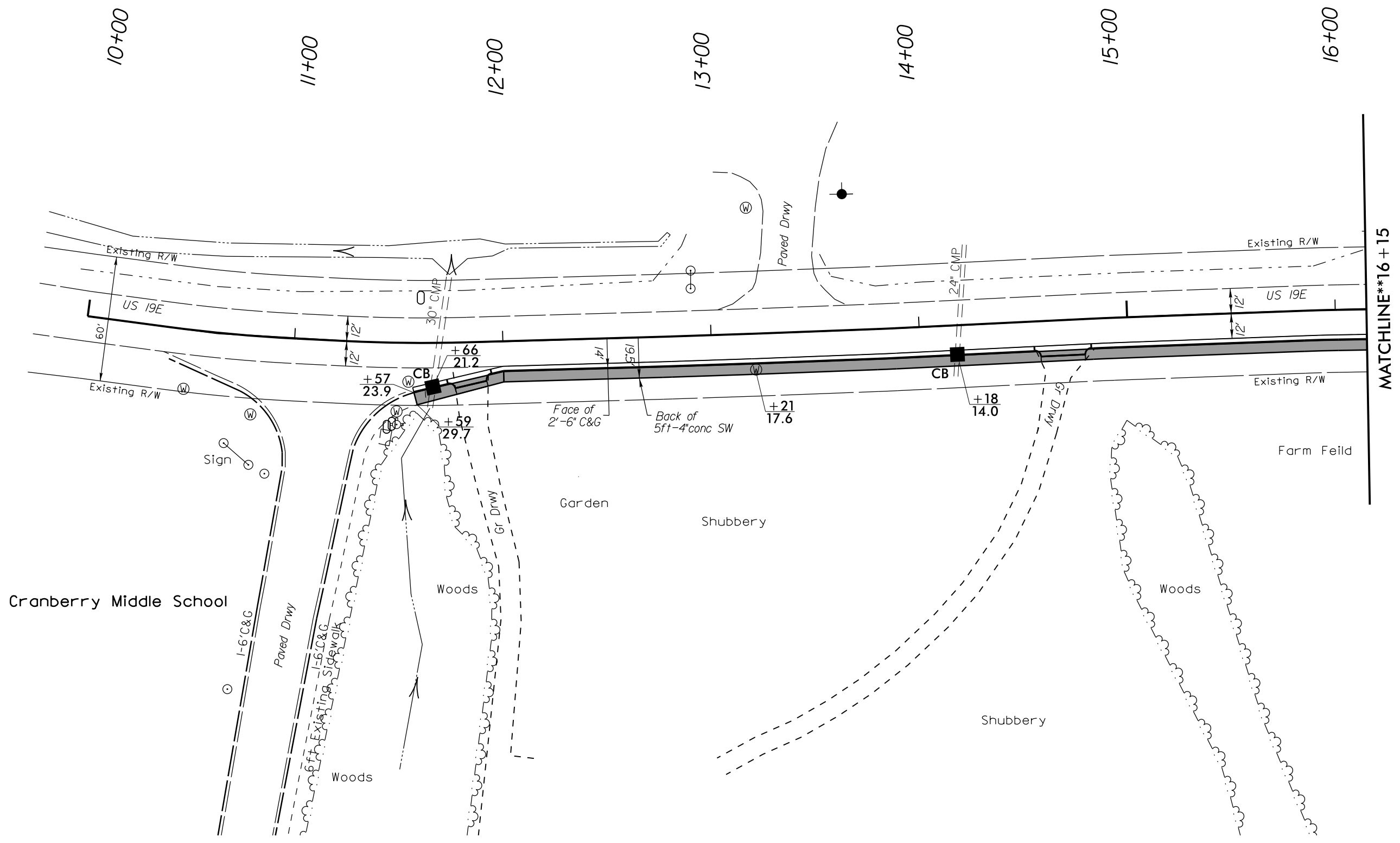


PROJECT REFERENCE NO.	SHEET NO.
	4
R/W SHEET NO.	
ROADWAY DESIGN ENGINEER	HYDRAULICS ENGINEER
<b>INCOMPLETE PLANS</b> DO NOT USE FOR R/W ACQUISITION	
<b>PRELIMINARY PLANS</b> DO NOT USE FOR CONSTRUCTION	

REVISIONS

03-JUN-2015 11:36 R:\Road\Projects\US\Avery\Cranberry\_Middle\_School\Plan\_Sheets\PlanSht-4.dgn 8/17/99



Cranberry Middle School

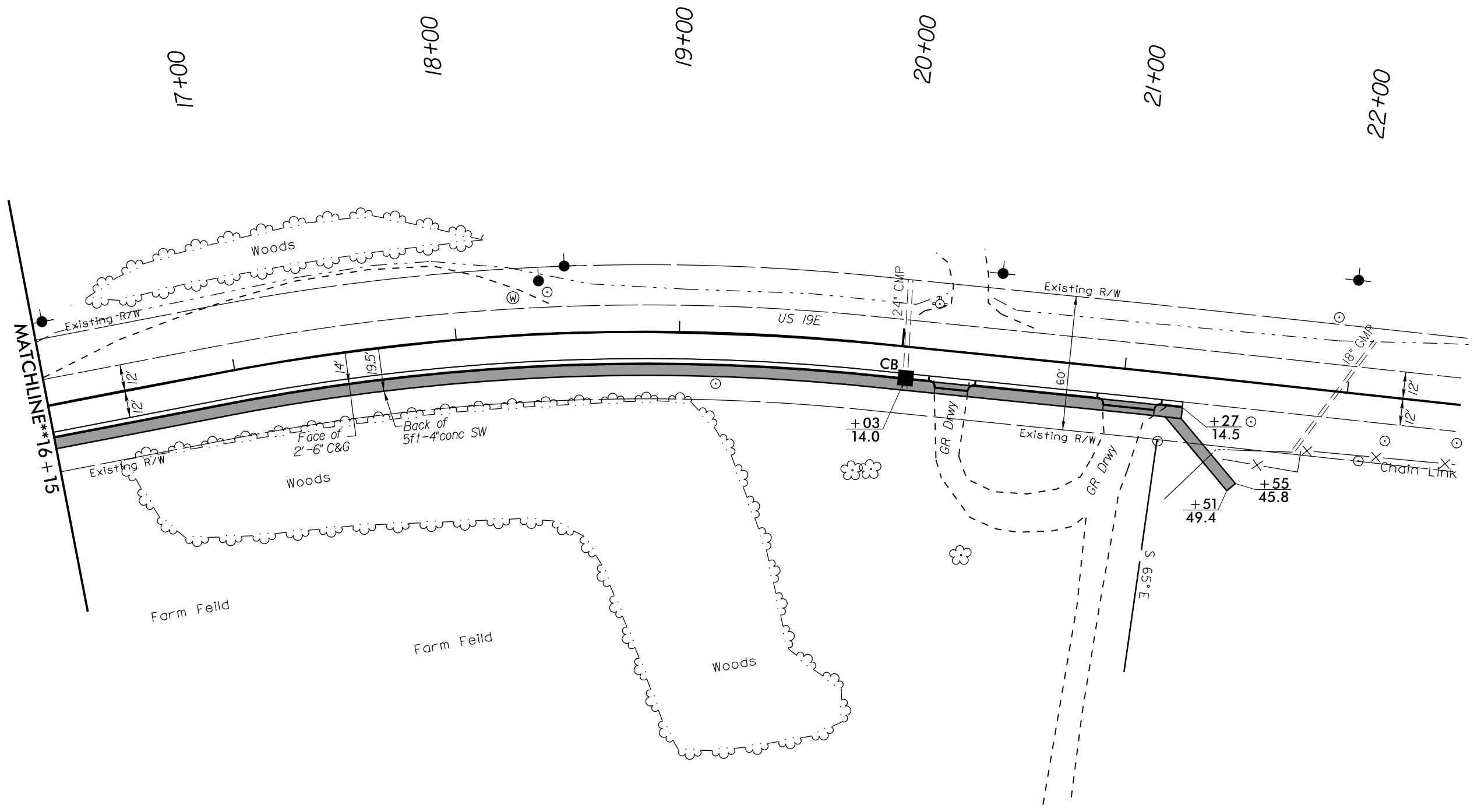
MATCHLINE\*\*16+15

8/17/99

03-JUN-2015 11:36  
R:\Road\Projects\US\Avery\Cranberry\_Middle\_School\Plan\_Sheets\PlanSht-5.dgn  
\$\$\$\$\$USERENV\$\$\$\$\$

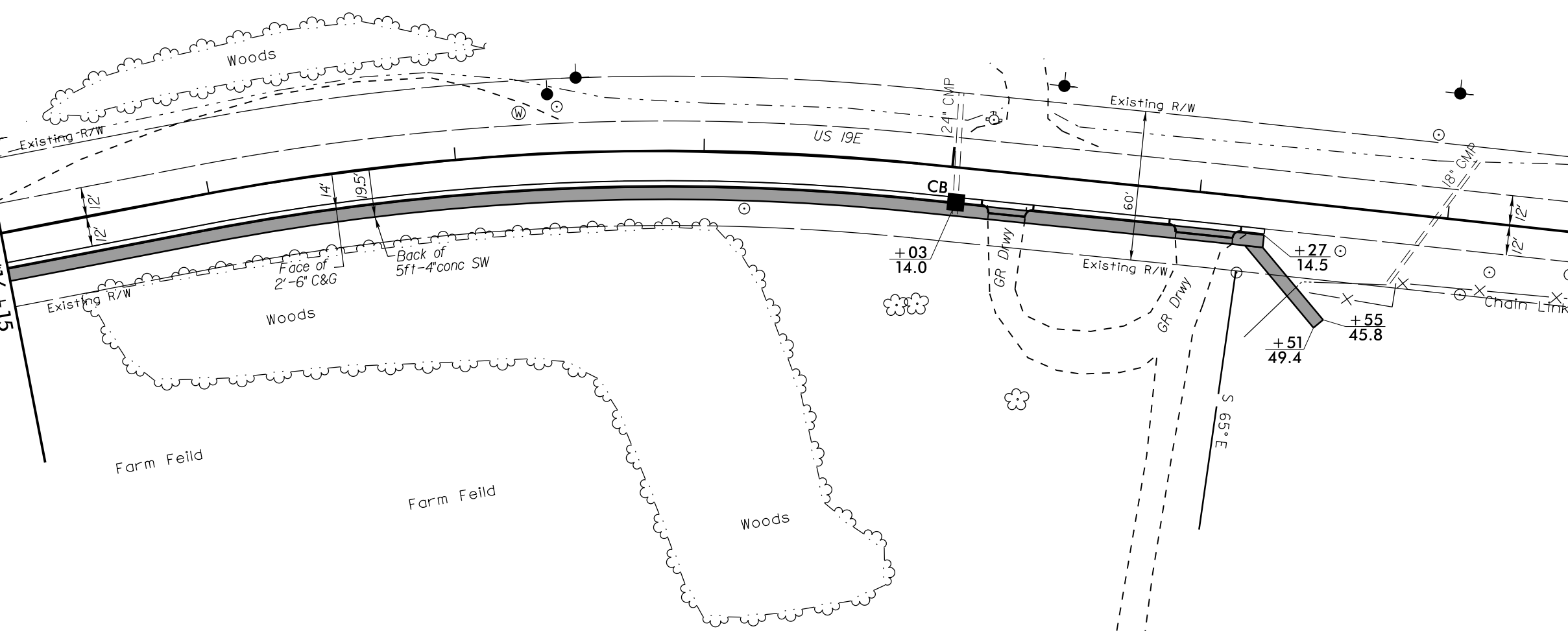
REVISIONS

PROJECT REFERENCE NO.	SHEET NO.
	5
R/W SHEET NO.	
ROADWAY DESIGN ENGINEER	HYDRAULICS ENGINEER
<b>INCOMPLETE PLANS</b> DO NOT USE FOR R/W ACQUISITION <b>PRELIMINARY PLANS</b> DO NOT USE FOR CONSTRUCTION	



MATCHLINE\*\*16+15

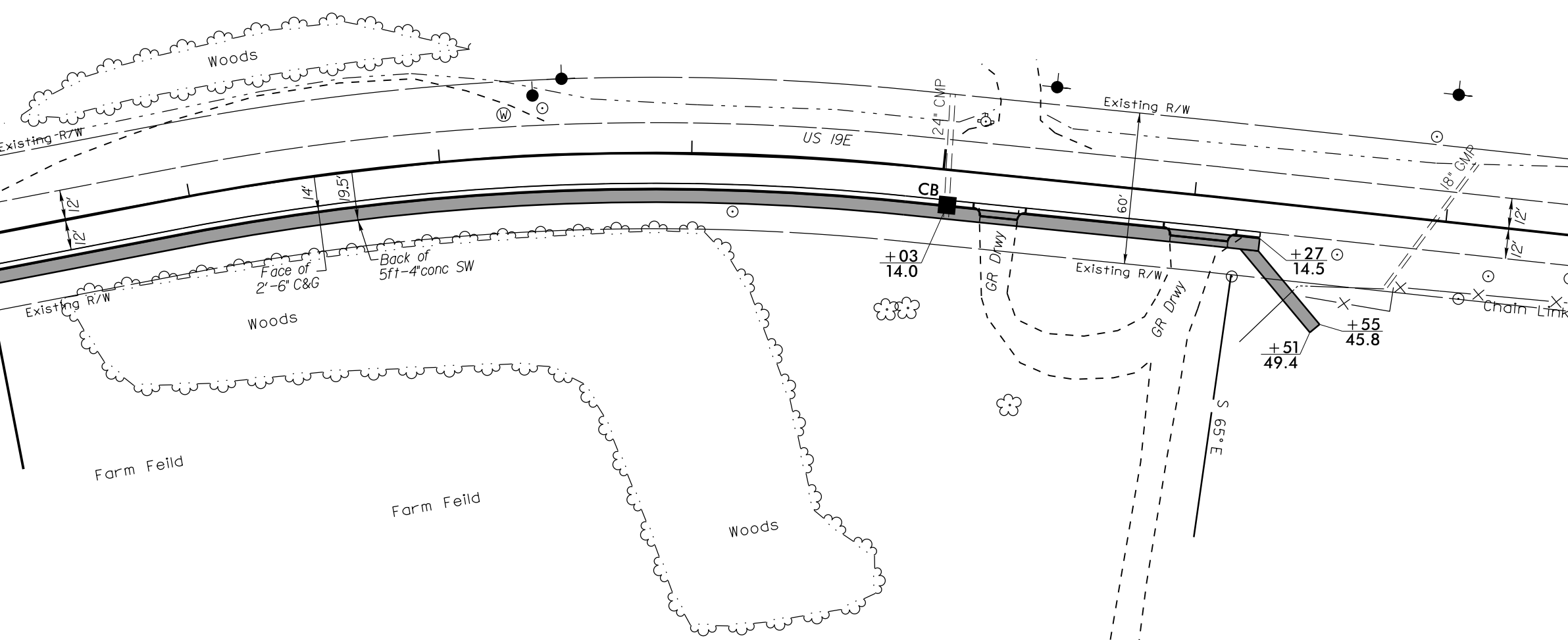
17+00 18+00 19+00 20+00 21+00 22+00



+03  
14.0  
+27  
14.5  
+51  
49.4  
+55  
45.8

Face of  
2'-6" C&G  
Back of  
5ft-4" conc SW

Farm Feild



Face of  
2'-6" C&G  
Back of  
5ft-4" conc SW

Farm Feild