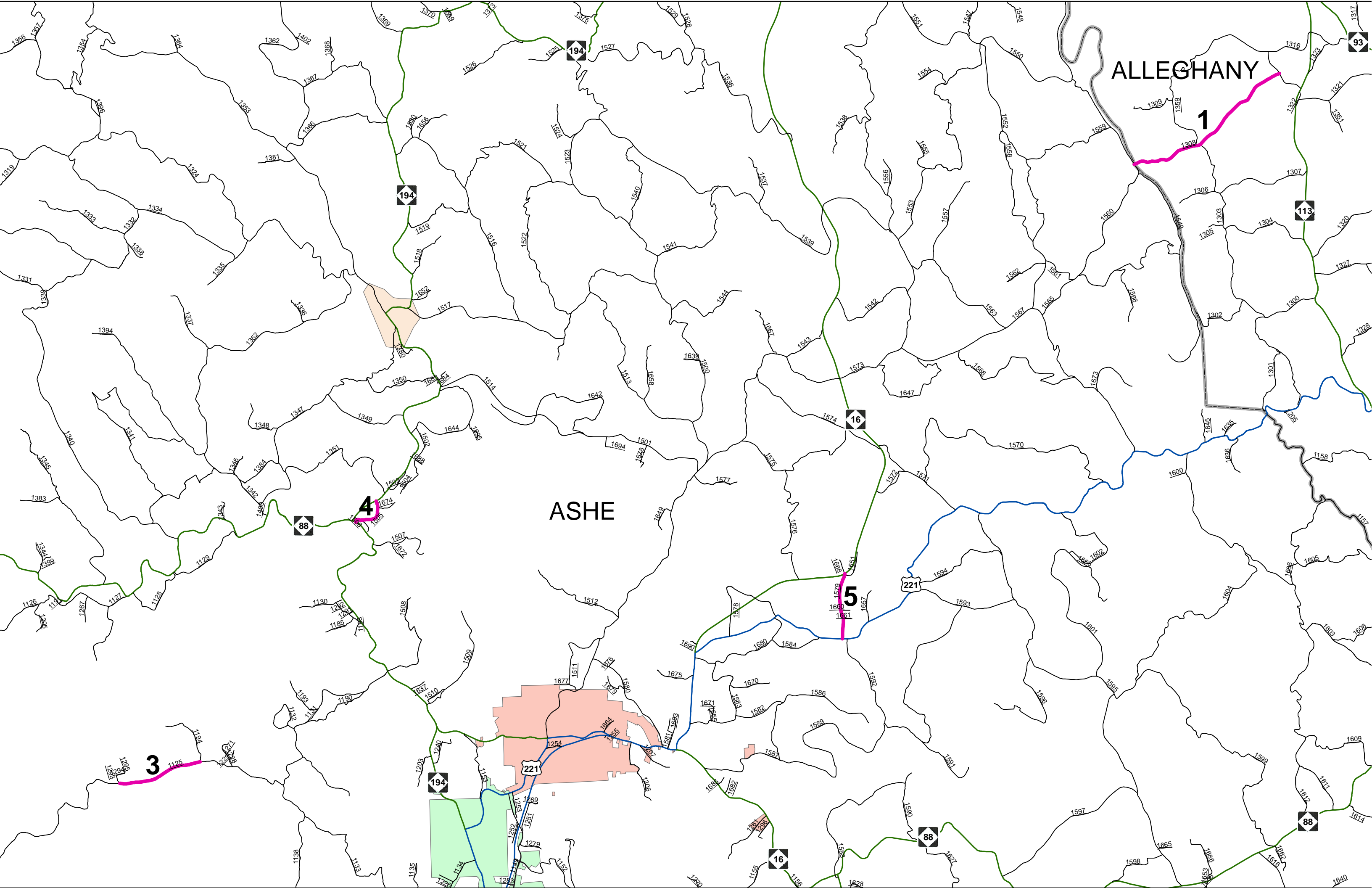


PROJECT NO.	SHEET NO.	TOTAL NO.
49326.3.5	1	1

SUMMARY OF QUANTITIES

Project No.	County	Map No.	Route	Route Name	From Description	To Description	Mile Post From	Mile Post To	LANES	LANE TYPE	LENGTH	WIDTH	4847010000-E		4685000000-E		4850000000-E
													4" WHITE POLYUREA PAVEMENT MARKING LINES (4", 30 MILS)	4" YELLOW POLYUREA PAVEMENT MARKING LINES (4", 30 MILS)	4" WHITE THERMOPLASTIC PAVEMENT MARKING LINES (4", 90 MILS)	4" YELLOW THERMOPLASTIC PAVEMENT MARKING LINES (4", 90 MILS)	REMOVAL OF PAVEMENT MARKING LINES (4")
													LF	LF	LF	LF	LF
49326.3.5	Alleghany	1	SR 1308	Kings Creek Rd	ASHE C/L	SR 1316	0	2.33	2	2WU	2.33	18	24,605	24,605			49,210
49326.3.5	Alleghany	2	SR 1478	Roaring Gap Dr	US 21	SR 1476	0	2.14	2	2WU	2.14	18	22,599	22,599			45,197
49326.3.5	Ashe	3	SR 1125	West Buffalo Rd	SR 1194	SR 1293	2.97	4.07	2	2WU	1.1	20	11,836	11,188			23,024
49326.3.5	Ashe	4	SR 1505	Northwest School Rd	NC 194	NC 88	0	0.49	2	2WU	0.49	18	5,640	5,534			11,174
49326.3.5	Ashe	5	SR 1579	Greensboro Rd	NC 16	US 221	0	0.84	2	2WU	0.84	22	9,039	8,840			17,879
49326.3.5	Avery	6	SR 1149	Walt Clark Rd	SR 1143	SR 1150	0	1.4	2	2WU	1.4	20	14,784	14,784			29,568
49326.3.5	Avery	7	SR 1156	Old Cranberry / Cemetary Rd	NC 194	EOM	0	0.36	2	2WU	0.36	18	3,802	3,802			7,603
49326.3.5	Avery	8	SR 1159	Vale Rd	SR 1157	NC 194	0	1.75	2	2WU	1.75	19	18,500	18,500			37,000
49326.3.5	Avery	9	SR 1171	Brook Shell Rd	SR 1170	EOM	0	1.48	2	2WU	1.48	16	16,470	16,470			32,940
49326.3.5	Avery	10	SR 1300	Buck Mountain Rd	E US 19E	W US 19E	0	0.47	2	2WU	0.47	16	4,963	4,963			9,926
49326.3.5	Avery	11	SR 1349	Ruffin St	US 221	SR 1351	0	0.39	2	2WU	0.39	16	4,000	4,000			8,000
49326.3.5	Caldwell	12	SR 1002	Dudley Shoals Rd	SR 1734	SR 1746	2.35	2.9	2	2WU	0.56	20			6,200	6,200	12,400
49326.3.5	Caldwell	13	SR 1002	Dudley Shoals Rd	SR 1753	US 321A	6.23	8.92	2	2WU	2.69	18			28,406	28,406	56,813
49326.3.5	Caldwell	14	SR 1284	Spartan Dr	SR 1108	EOM	0	1.02	2	2WU	1.02	24			10,768	10,768	21,536
49326.3.5	Caldwell	15	SR 1931	Bert Huffman Dr	SR 1252	EOM	0	0.42	2	2WU	0.42	20			4,436	4,436	8,872
49326.3.5	Surry	16	SR 1100	Turkey Ford Rd	SR 2276	SR 1003	5.64	10.59	2	2WU	4.95	21			52,272	52,272	104,544
49326.3.5	Surry	17	SR 1141	Gentry Rd	NC 268	EOM	0	0.82	2	2WU	0.82	24			8,659	8,659	17,318
49326.3.5	Watauga	18	SR 1151	Sevin Devils Rd	NC 105	SEVEN DEVILS C/L	0	0.73	2	2WU	0.73	22	7,850	7,850			15,700
49326.3.5	Watauga	19	SR 1306	Howards Creek Rd	SR 1323	SR 1102-EOP	5.18	6.46	2	2WU	1.26	18	13,306	13,306			26,612
49326.3.5	Watauga	20	SR 1350	Big Hill Rd	SR 1334	SR 1351	0	1.73	2	2WU	1.73	17	17,774	17,774			35,548
49326.3.5	Watauga	21	SR 1524	Bamboo Rd	SR 1523	SR 1608	0	1.12	2	2WU	1.12	18	11,827	11,827			23,654
49326.3.5	Watauga	22	SR 1532	Niley Cook Rd	US 321	EOP	0	1.15	2	2WU	1.15	20	12,144	12,144			24,288
49326.3.5	Watauga	23	SR 1603	Eagle Dr	SR 1602	EOM	0	0.7	2	2WU	0.7	17	7,850	7,850			15,700
49326.3.5	Watauga	24	SR 1666	Sorrento Dr	SR 1532	SR 1525	0	2.13	2	2WU	2.13	18	22,232	22,232			44,464
49326.3.5	Wilkes	25	SR 2014	N Hoots Rd / S Lomax Rd	NC 268	SR 1934	0	1.83	2	2WU	1.83	22			19,325	19,325	38,650
49326.3.5	Yadkin	26	SR 1003	Siloam Rd	SR 1534	SR 1541	2.55	3.71	2	2WU	1.16	20			12,482	12,482	24,963
49326.3.5	Yadkin	27	SR 1720	Wyo Rd	PAVEMENT WIDTH CHANGE	SR 1001	1.13	2.93	2	2WU	1.8	18			19,368	19,368	38,736
49326.3.5	Yadkin	28	SR 1725	Ray T Moore Rd	SR 1001	SR 1736	0.93	1.43	2	2WU	0.5	20			5,380	5,380	10,760
TOTAL FOR PROJECT NO. 49326.3.5											37.32		229,220	228,267	167,296	167,296	792,079
													457,487		334,592		



ALLEGHANY

1

ASHE

4

5

3

93

113

16

88

221

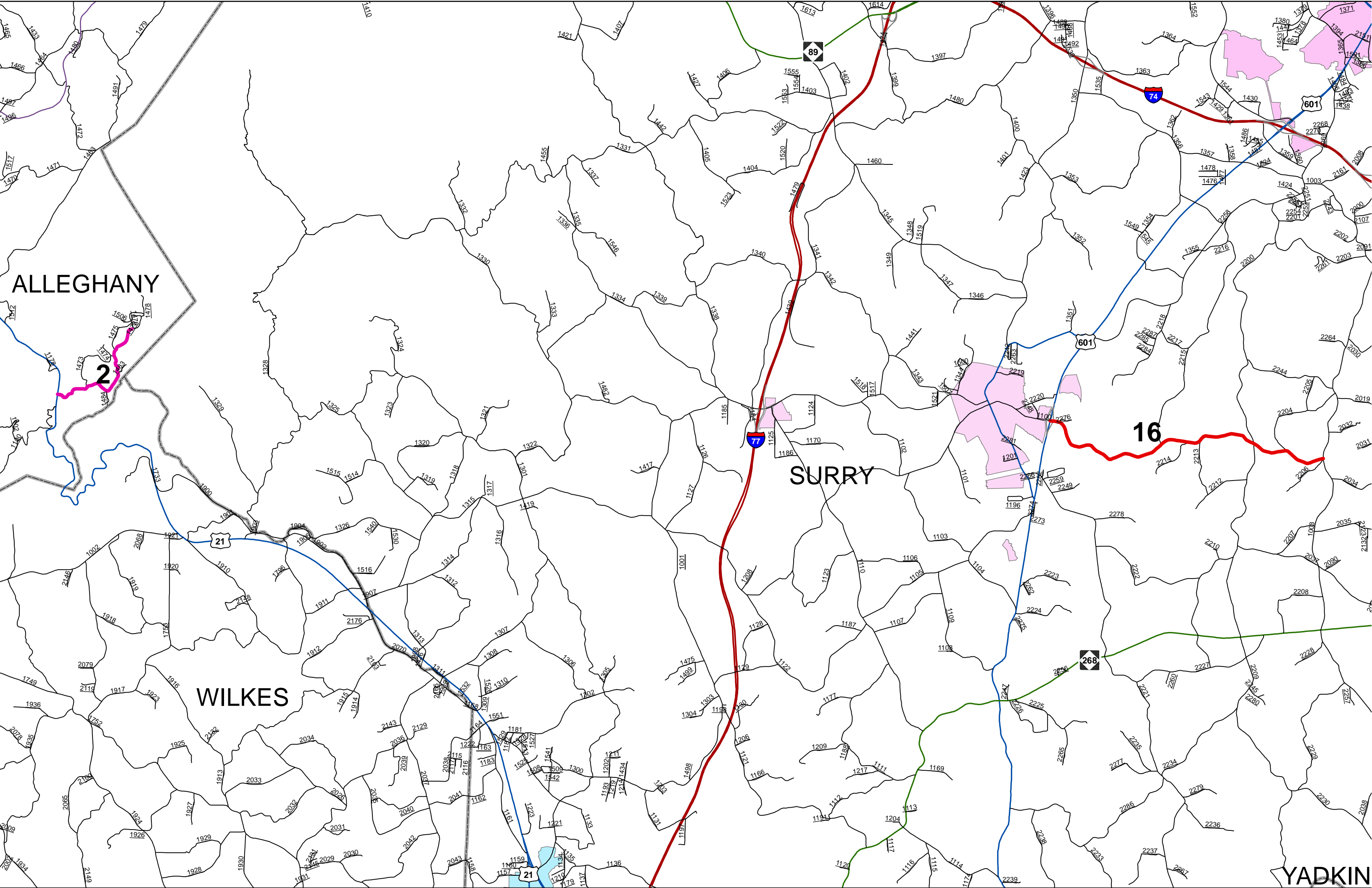
88

194

16

88

221



ALLEGHANY

SURRY

WILKES

YADKIN

2

16

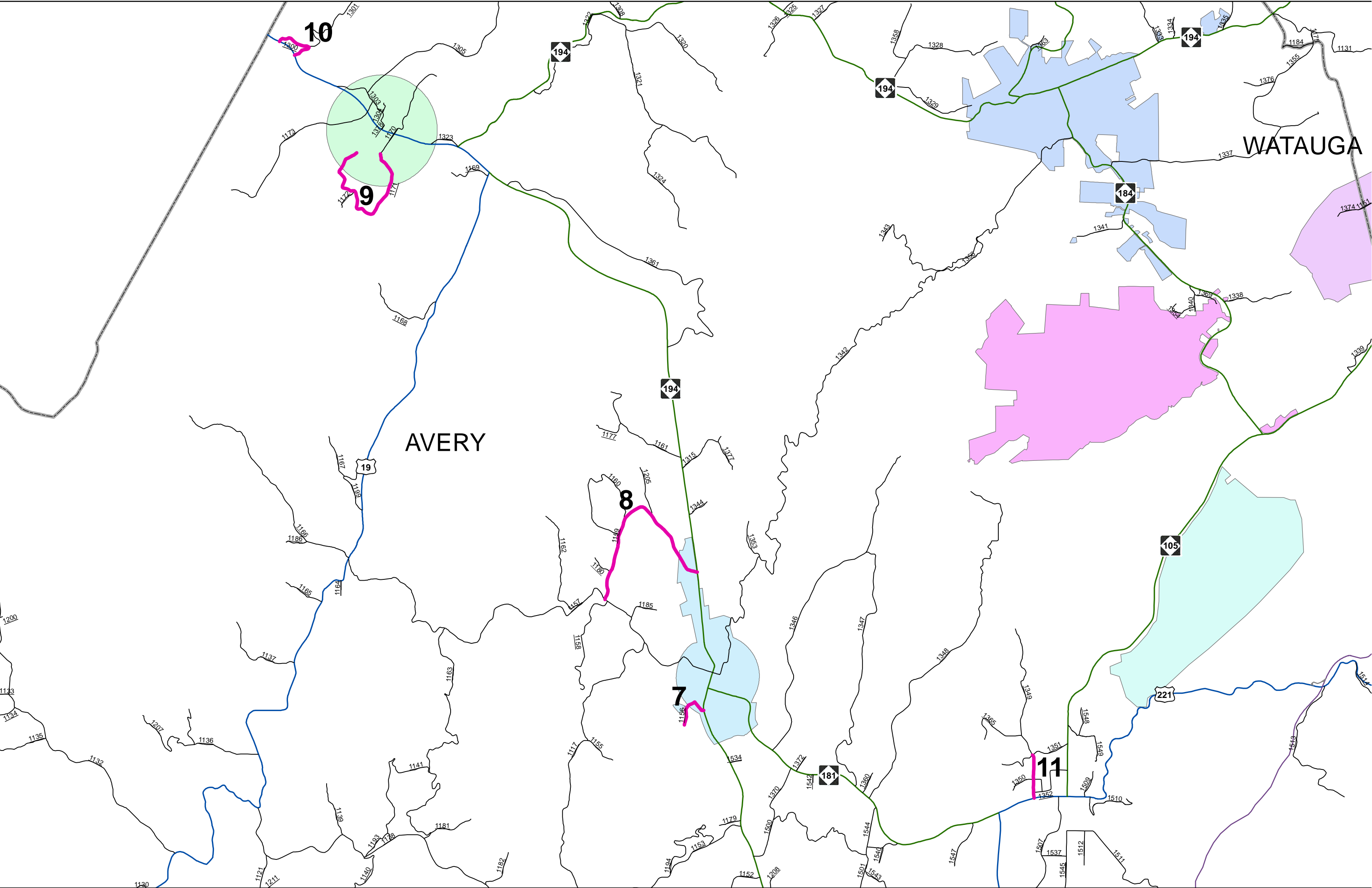
21

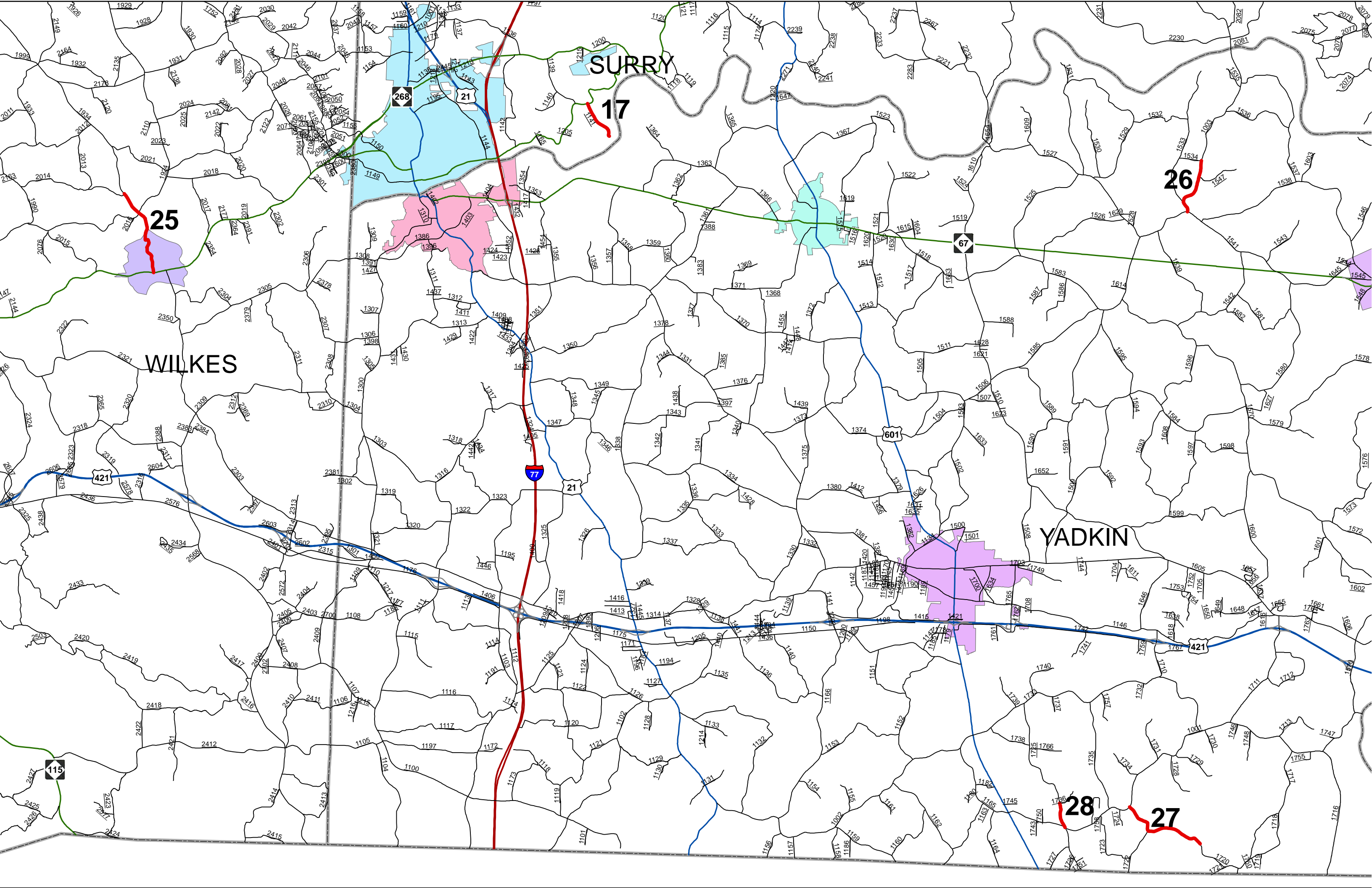
601

601

89

268





SURRY

WILKES

YADKIN

25

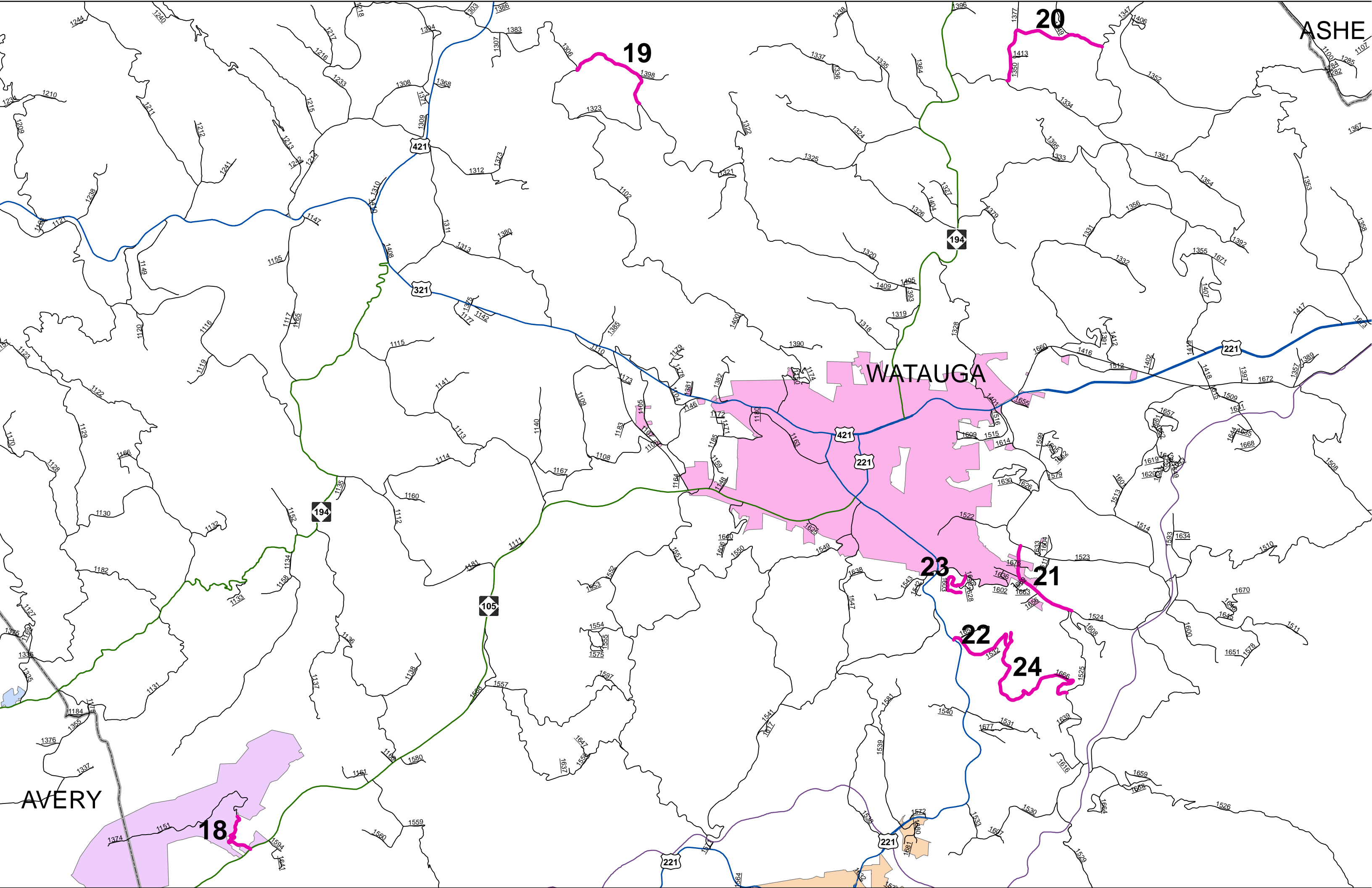
17

26

28

27





ASHE

20

19

WATAUGA

23

21

22

24

18

AVERY

221

221

421

321

421

221

194

105

194

221

221

221

421

321

421

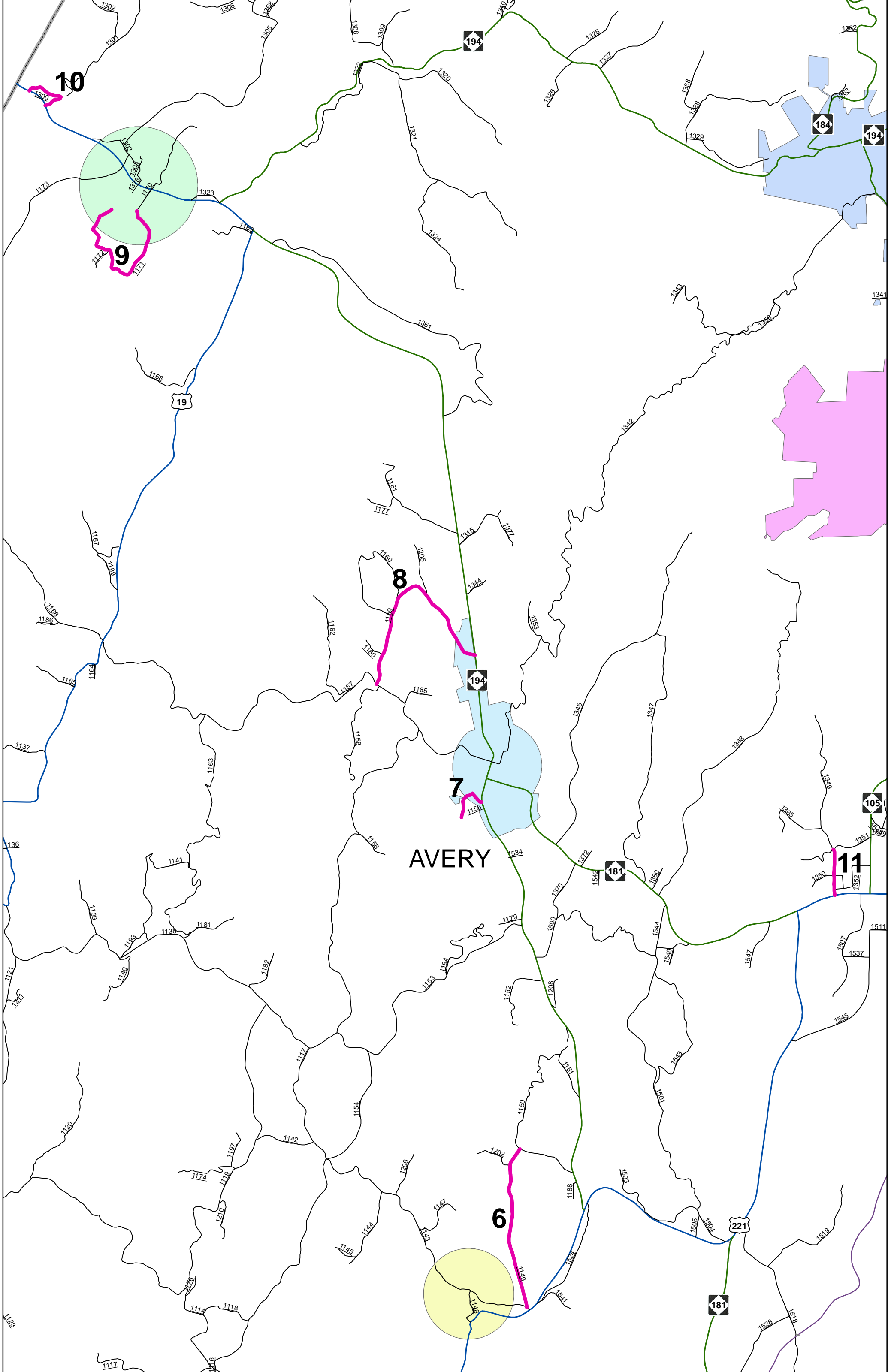
221

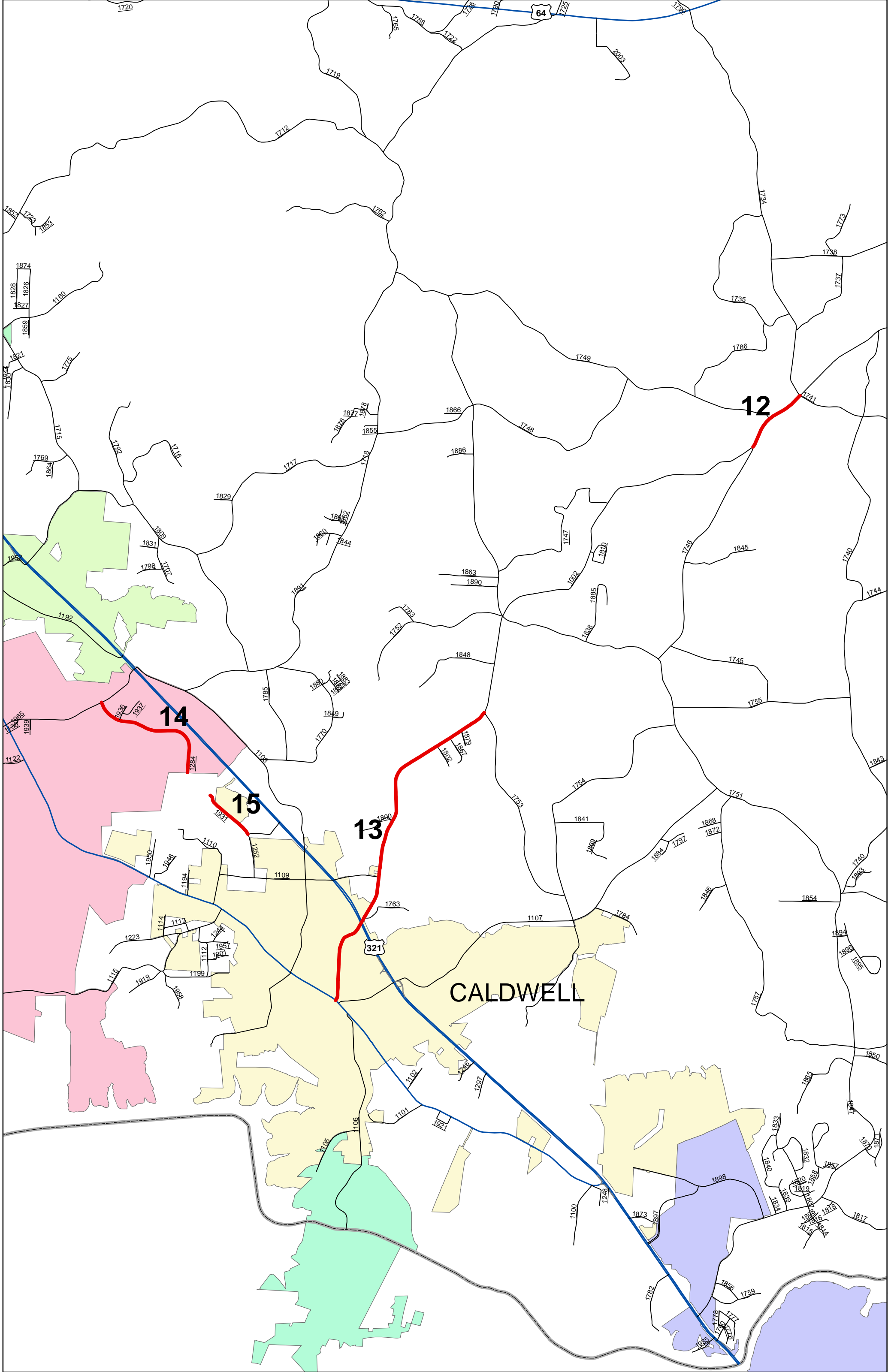
194

105

194

221





CALDWELL

12

13

14

15

321