



STATE OF NORTH CAROLINA
DEPARTMENT OF TRANSPORTATION

ROY COOPER
GOVERNOR

JAMES H. TROGDON, III
SECRETARY

January 22, 2018

To Prospective Bidders

Subject: Addendum 1 for: Joint Details and Location Maps

Description: Joint Repair
Contract No.: 11771248
WBS Element: 13BPR.10113
County: Buncombe, Burke and McDowell Counties
Route: Various Interstate, Primary, and Secondary Routes

This letter is to advise all prospective bidders of the following contract addendum.

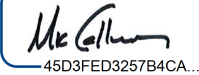
- An attachment showing Joint Details and Location Maps

Contractors are to sign the Addendum Acknowledgement sheet located within the proposal.

This addendum officially becomes a part of the contract bid document. If this office can provide additional information, please feel free to contact me at (828) 251-6171.

Sincerely,

DocuSigned by:



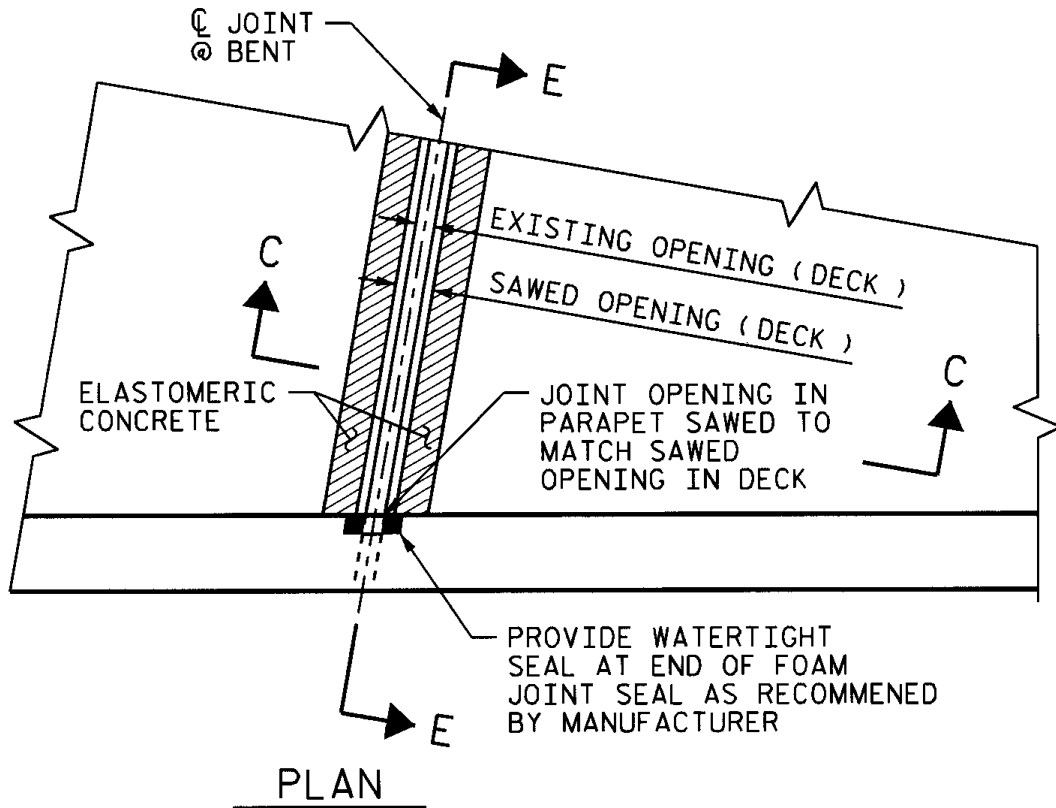
45D3FED3257B4CA...

M.K. Calloway

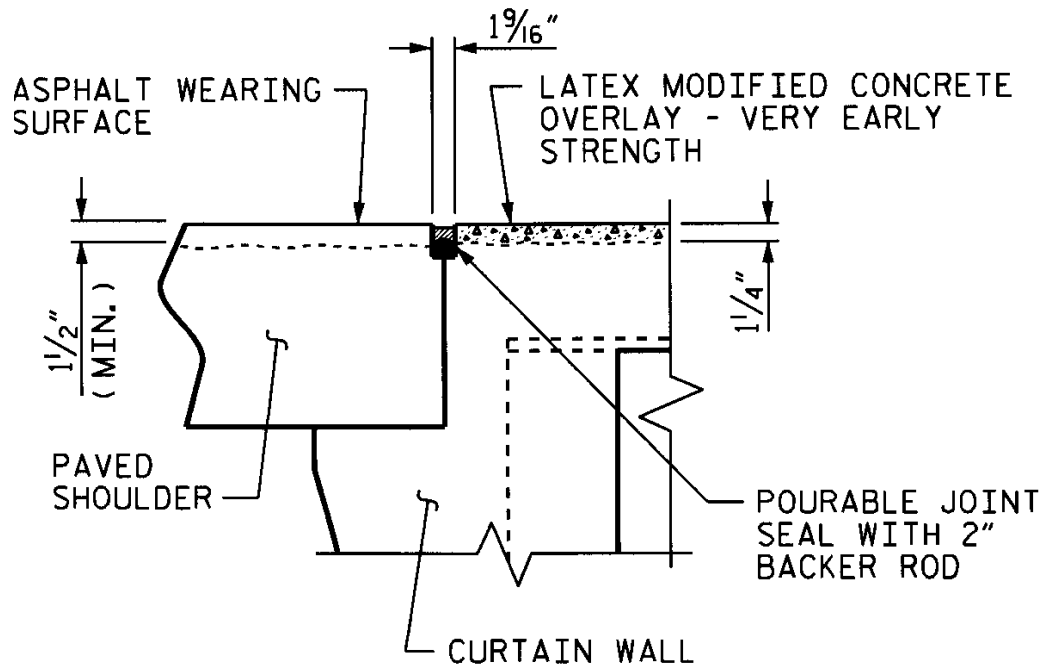
Division Project Manager

cc: Mr. J.J. Swain, Jr., P.E., Division Engineer
Mr. M.T. Gibbs, P.E., Division Maintenance Engineer
Mr. C.D. Medlin, P.E., Bridge Program Manager
Mr. J.R. Rice, Division Bridge Maintenance Engineer
Mr. T.S. Wilson, District II Supervisor
Mr. C.A. Guffey, District I Engineer

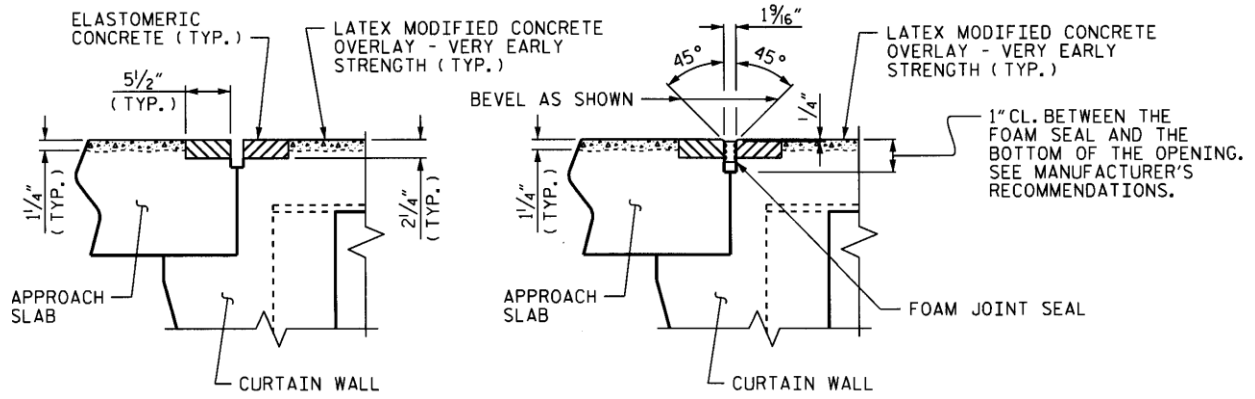
JOINT DETAILS AND LOCATION MAPS



JOINT SEAL DETAILS AT BENT



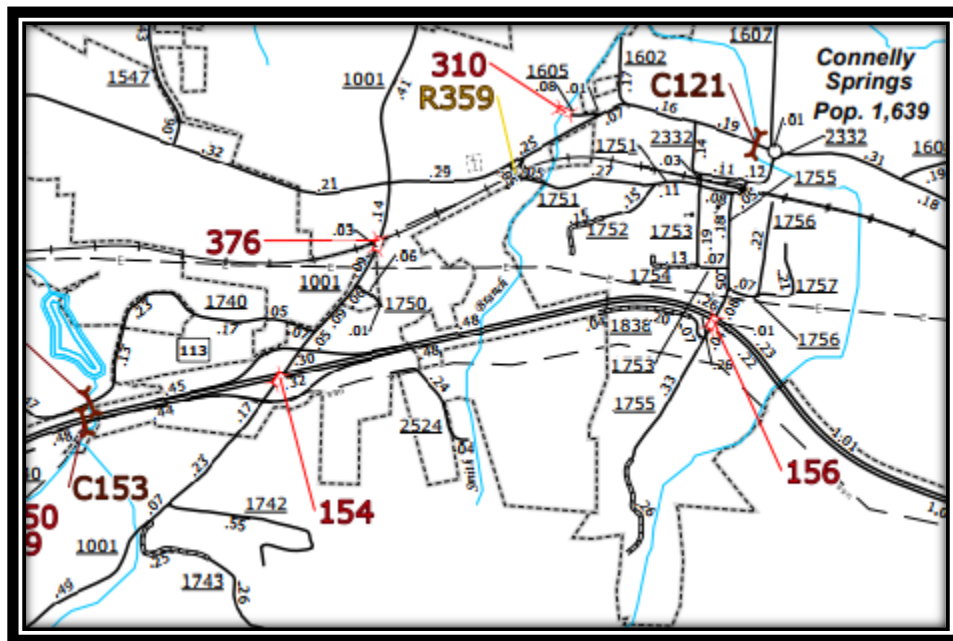
**TYPICAL INSTALLATION OF SILICONE SEAL WITH BACKER ROD
 FOR USE AT ANY LOCATION
 NO LMC OVERLAY OR ASPHALT REQUIRED**



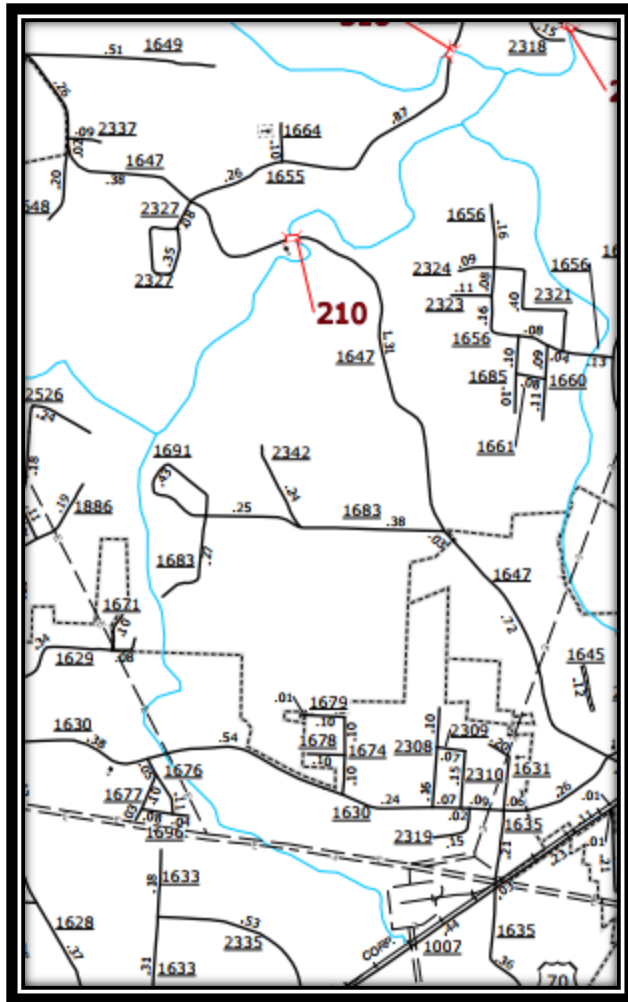
**TYPICAL FOAM JOINT SEAL INSTALLATION FOR ALL LOCATIONS
NO LMC OVERLAY REQUIRED**

LOCATION MAPS

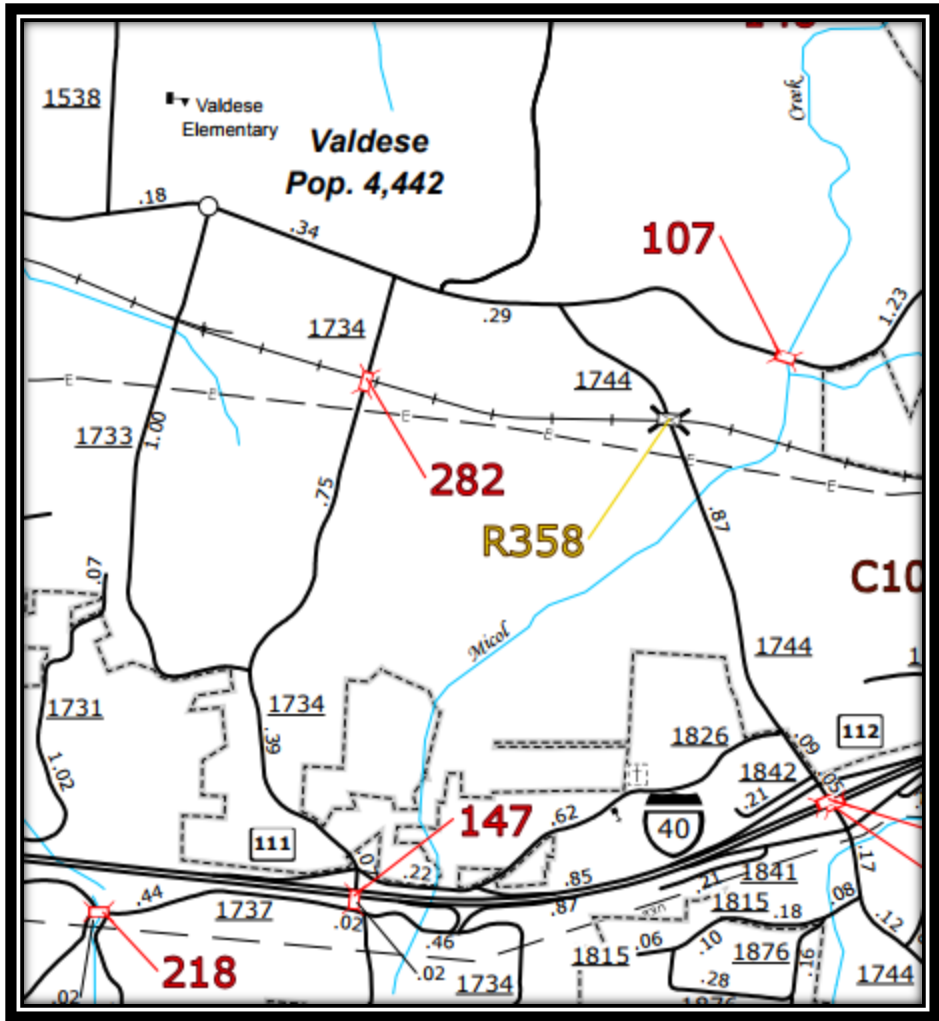
COUNTY	BRIDGE	COORDINATES
Burke	154	35.733797, -81.530399
Burke	210	35.746416, -81.416096
Burke	282	35.739989, -81.560556
Burke	350	35.772607, -81.430766
Burke	369	35.729416, -81.714105
Burke	309	35.664694, -81.616211
Burke	368	35.743181, -81.884345
McDowell	349	35.733666, -81.884328
McDowell	352	35.698976, -82.031407
McDowell	355	35.707452, -82.036829
Buncombe	451	35.556621, -82.511354
Buncombe	743	35.589557, -82.571576
Buncombe	734	35.791413, -82.538886
Buncombe	479	35.591514, -82.429020
Buncombe	407	35.726455, -82.555272
Buncombe	278	35.609479, -82.578518
Buncombe	248	35.567562, -82.585932
Buncombe	129	35.600247, -82.543754
Buncombe	145	35.768730, -82.436191
Buncombe	59	35.567956, -82.507350



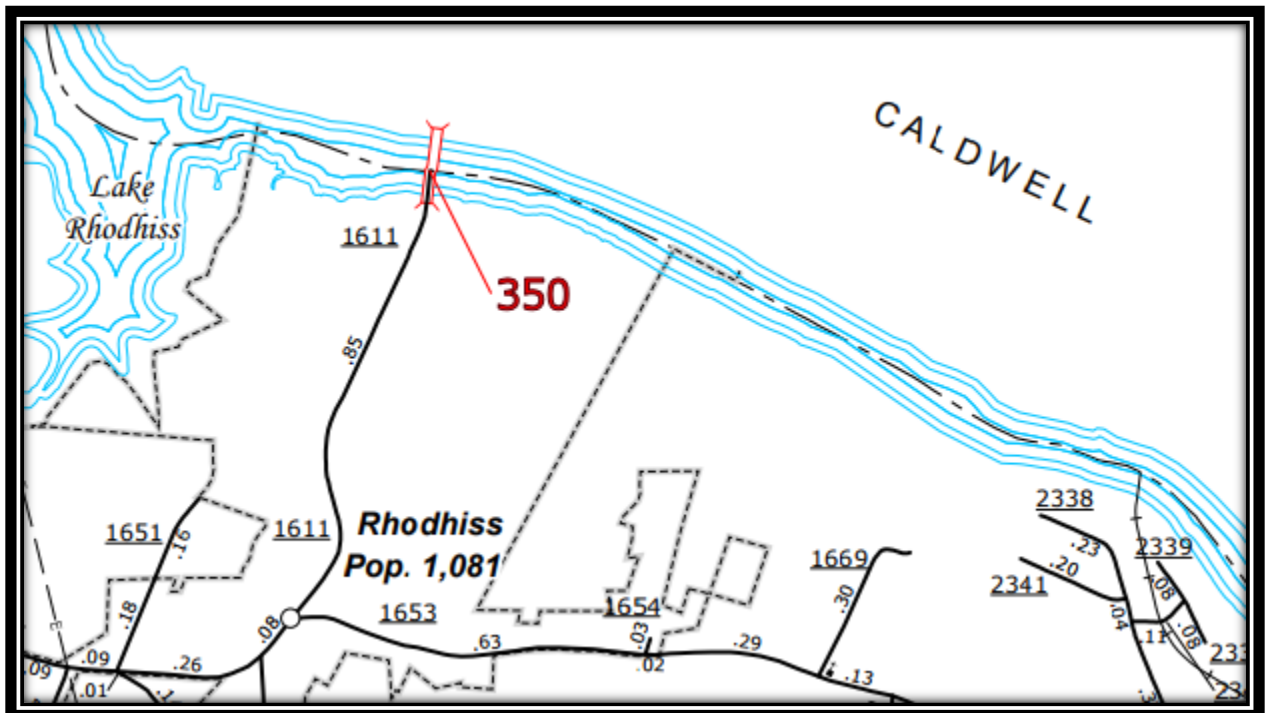
BURKE 154



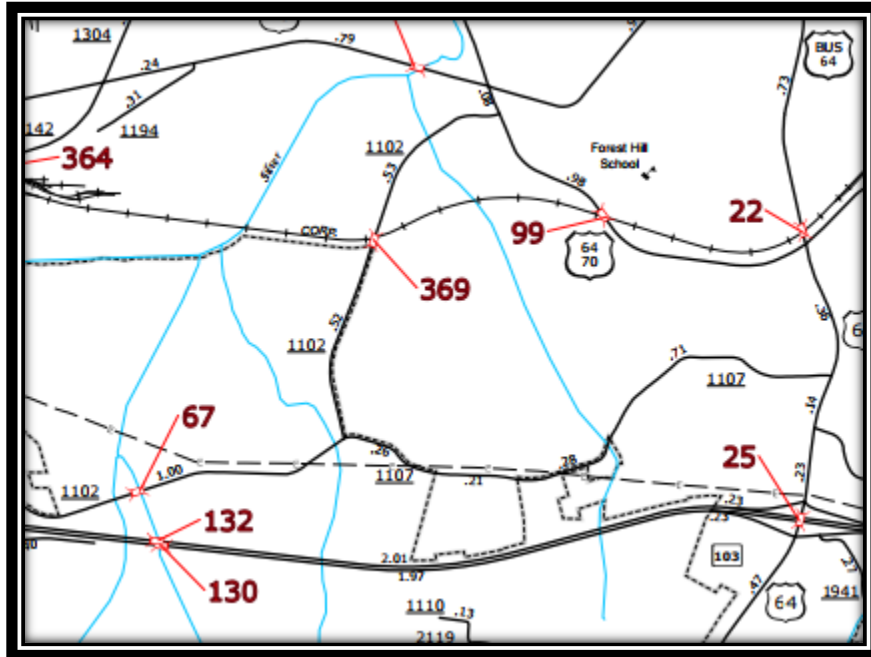
BURKE 210



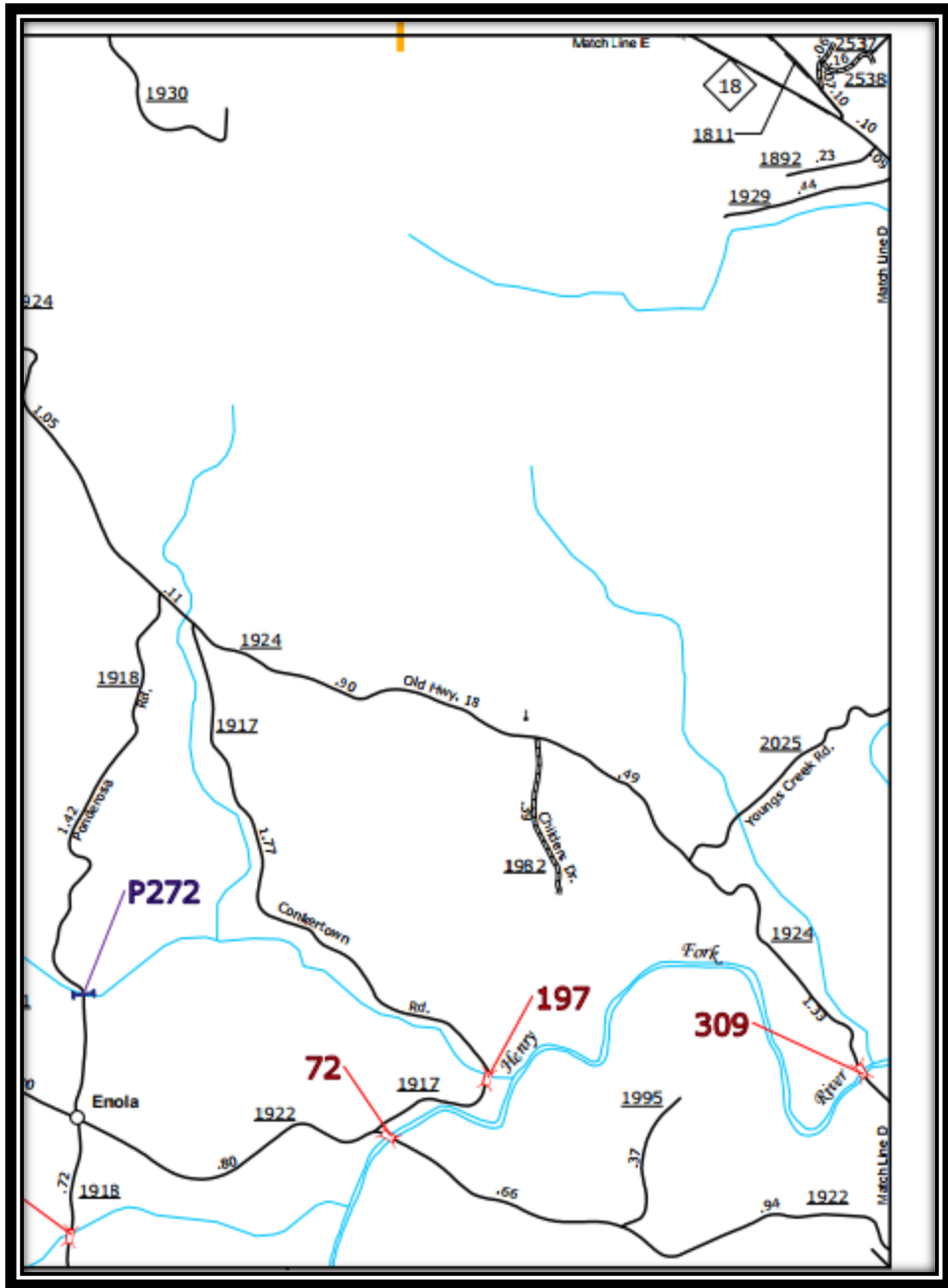
BURKE 282



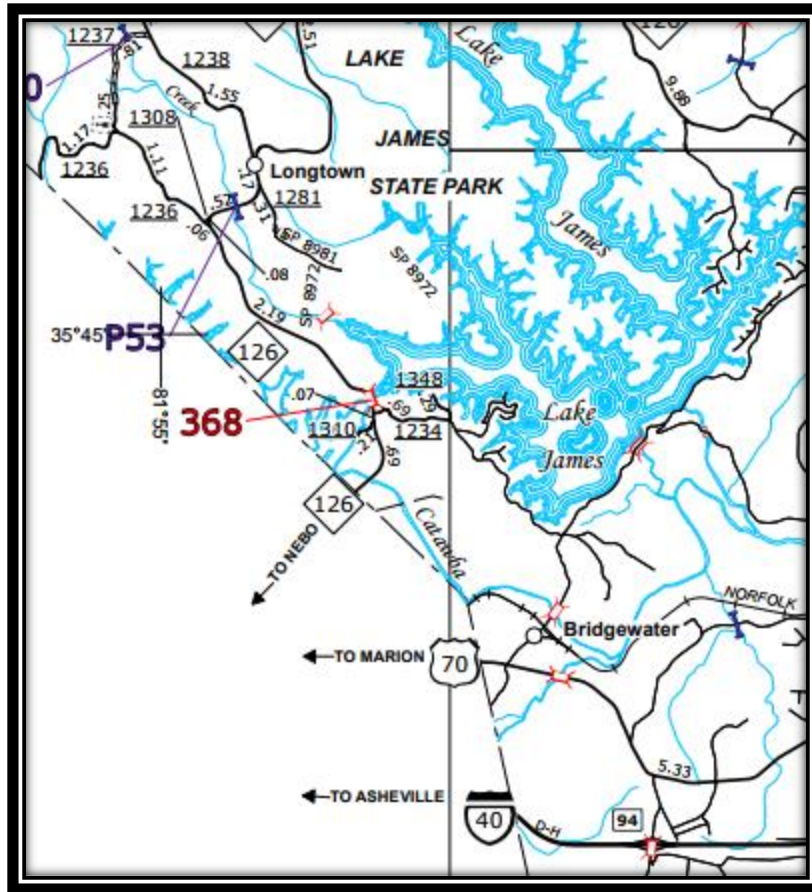
BURKE 350



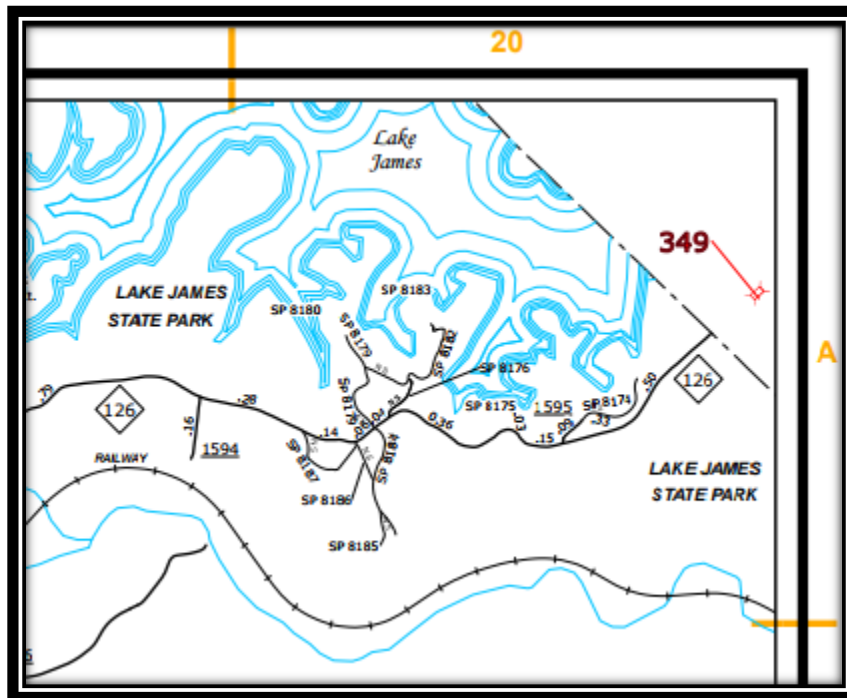
BURKE 369



BURKE 309

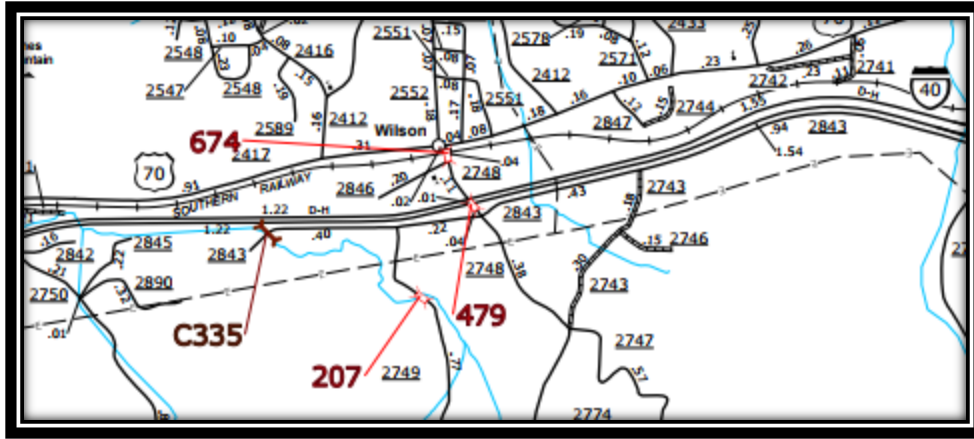


BURKE 368

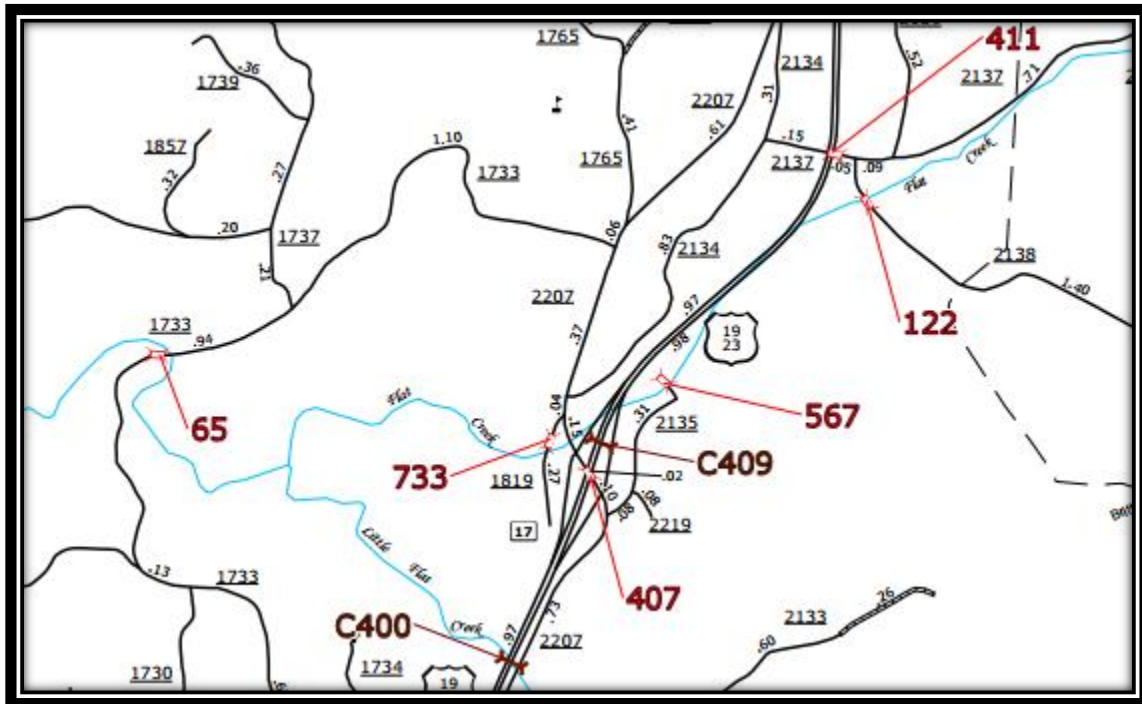


MCDOWELL 349

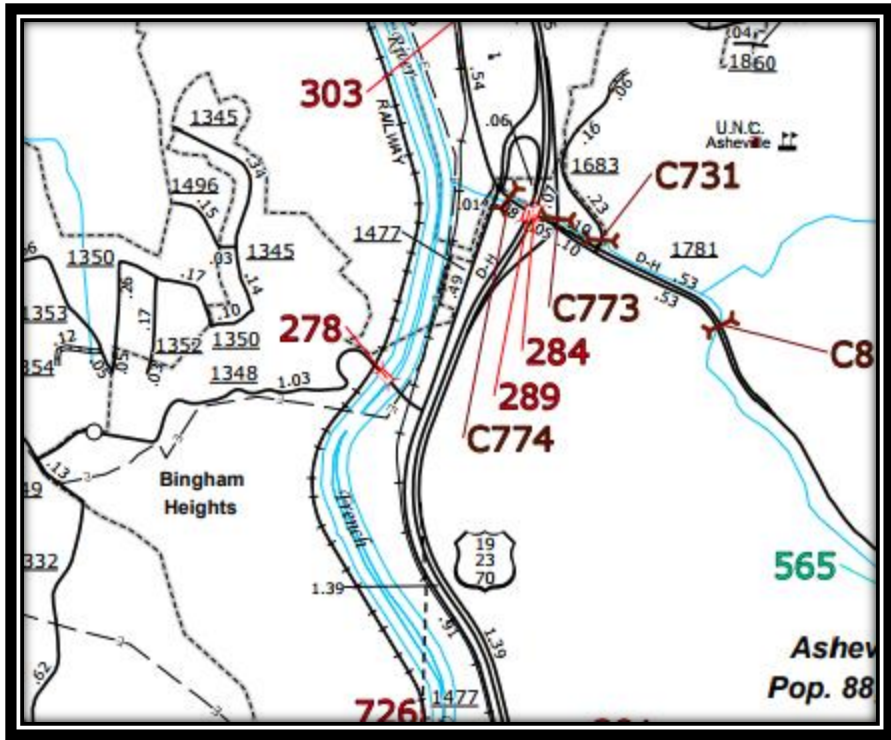
NOTE: ACTUAL LOCATION IN BURKE COUNTY



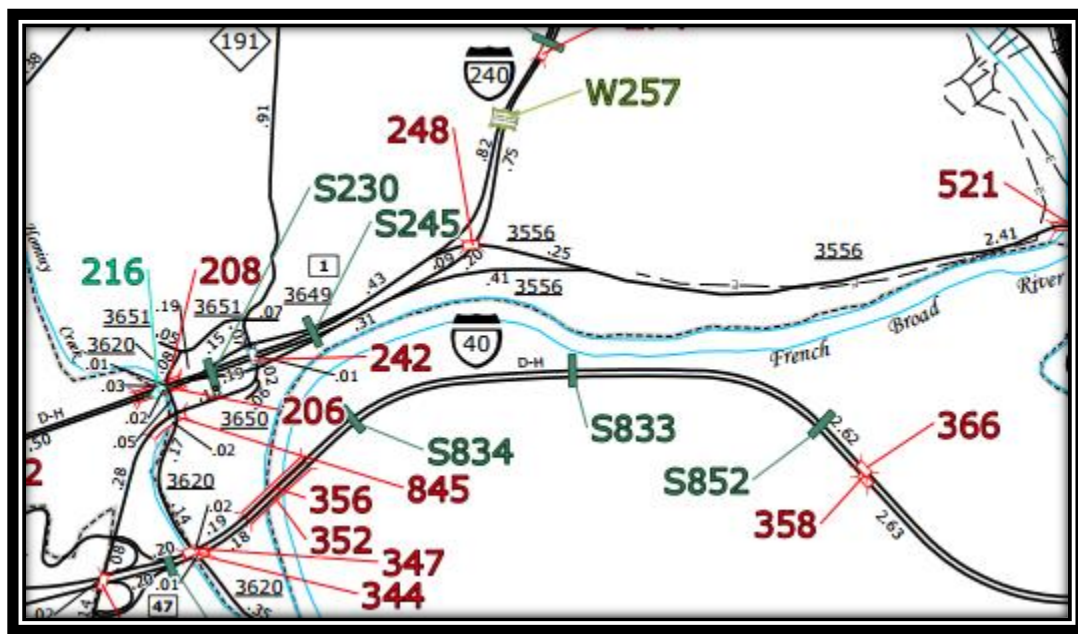
BUNCOMBE 479



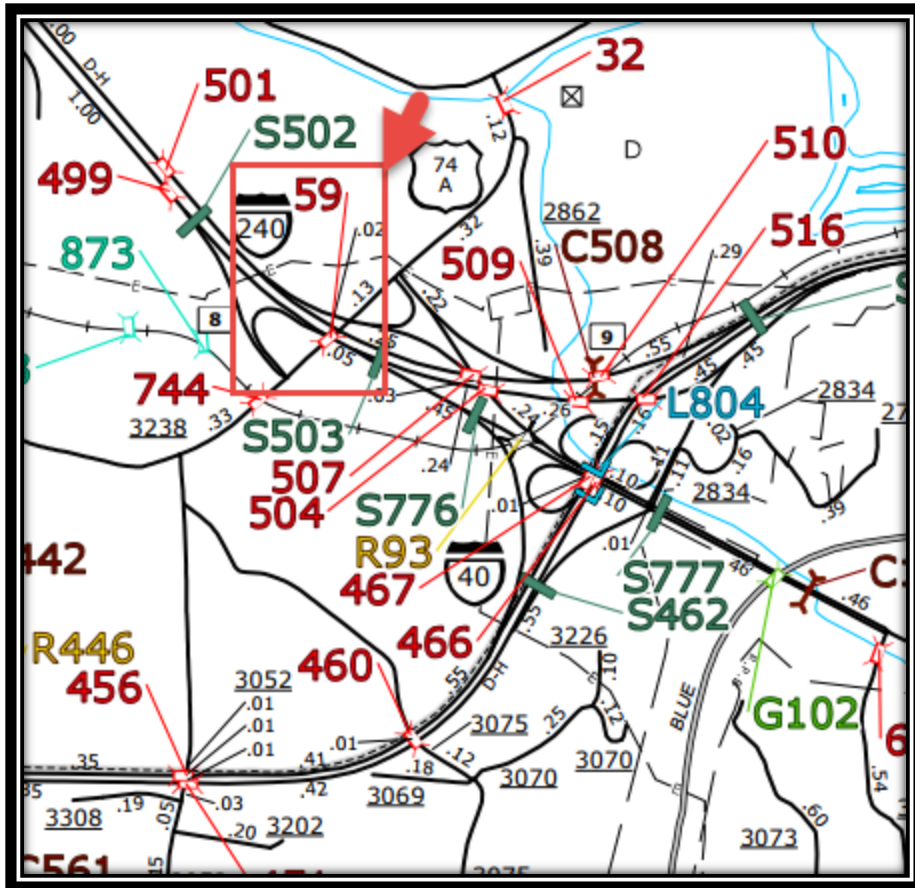
BUNCOMBE 407



BUNCOMBE 278



BUNCOMBE 248



BUNCOMBE 59