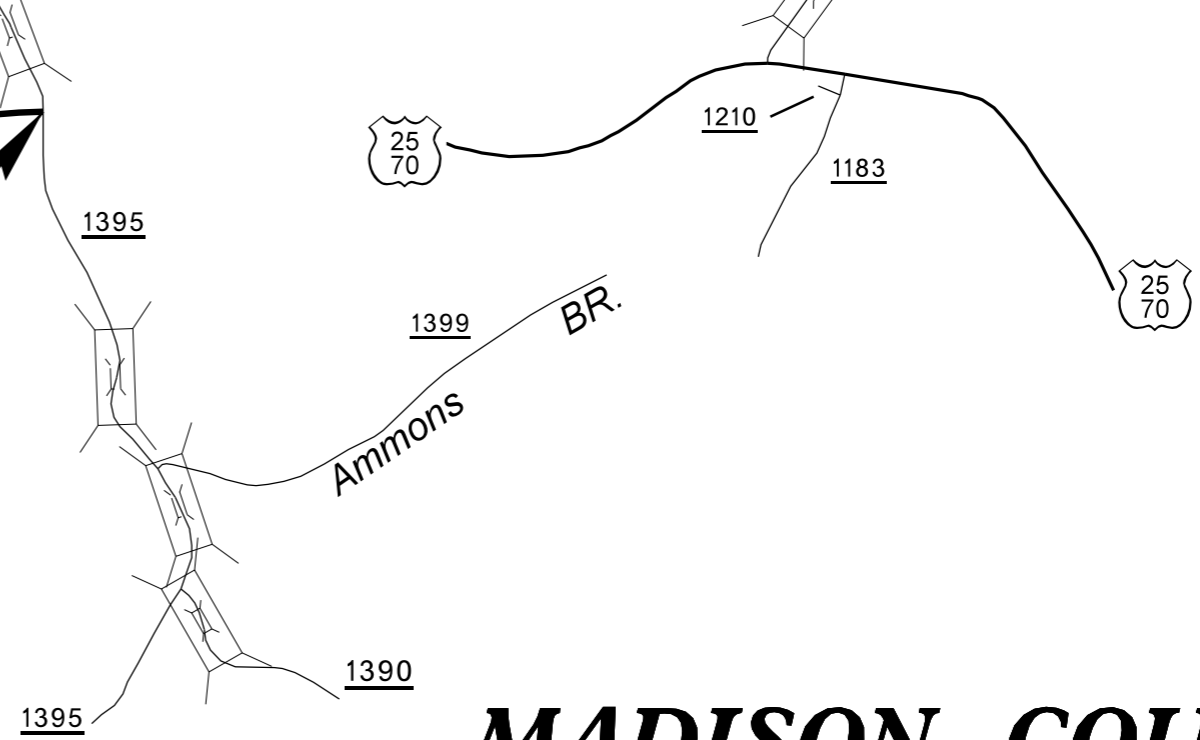
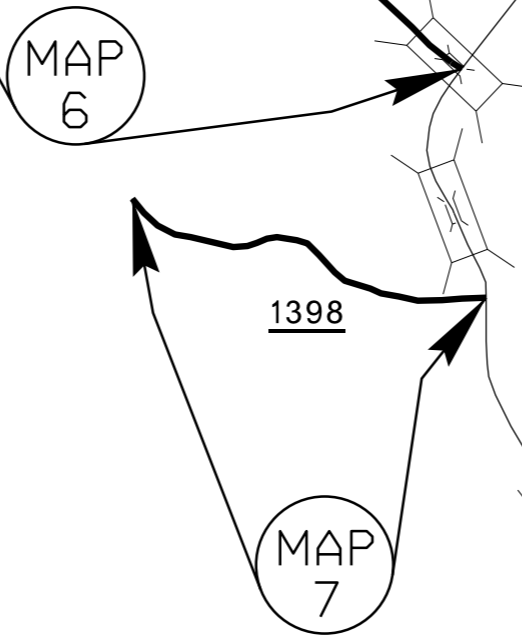
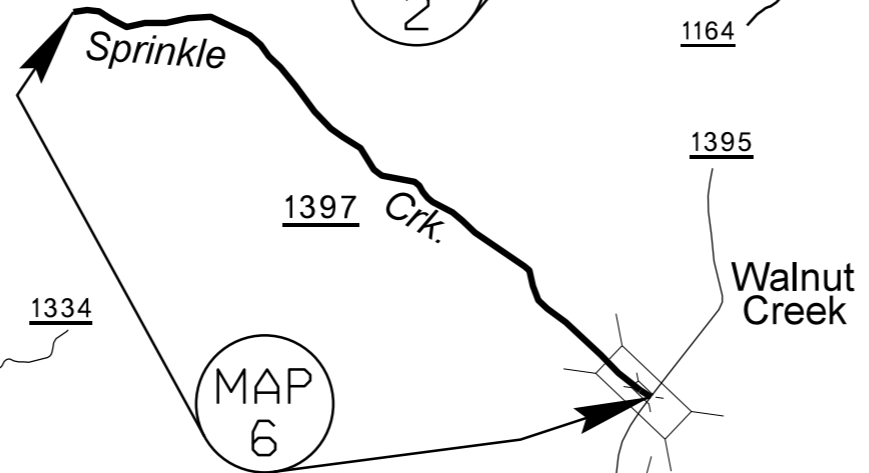
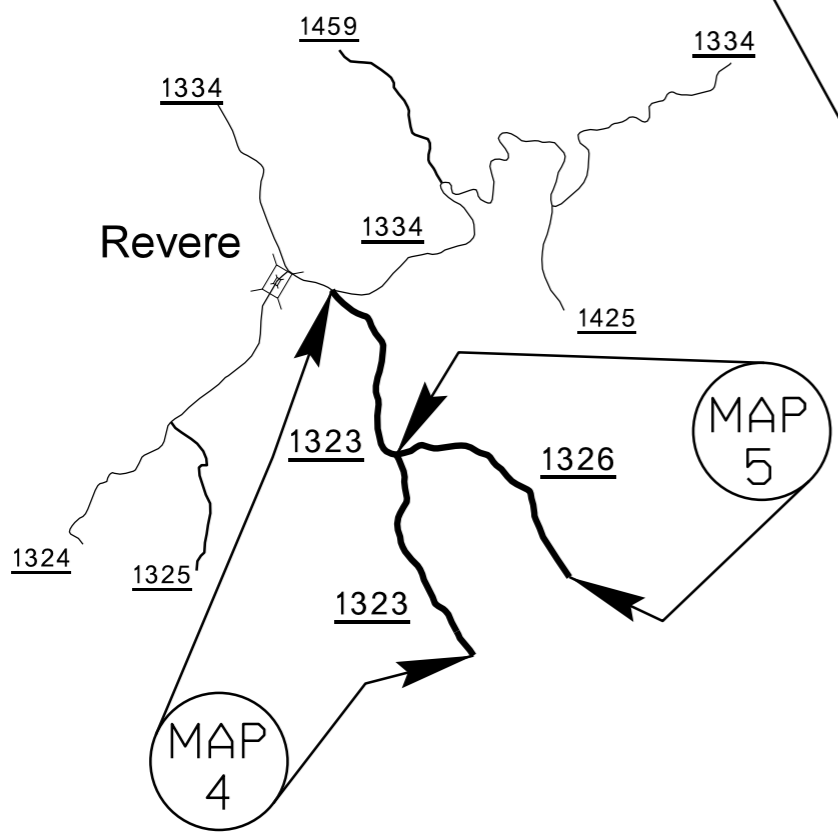
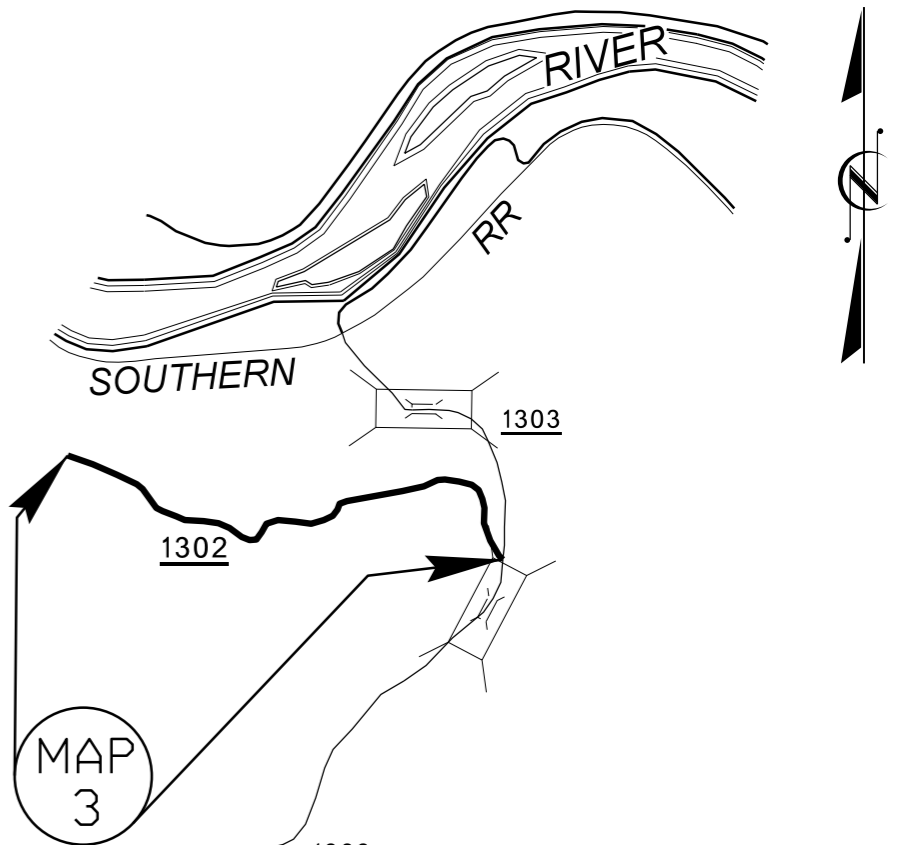
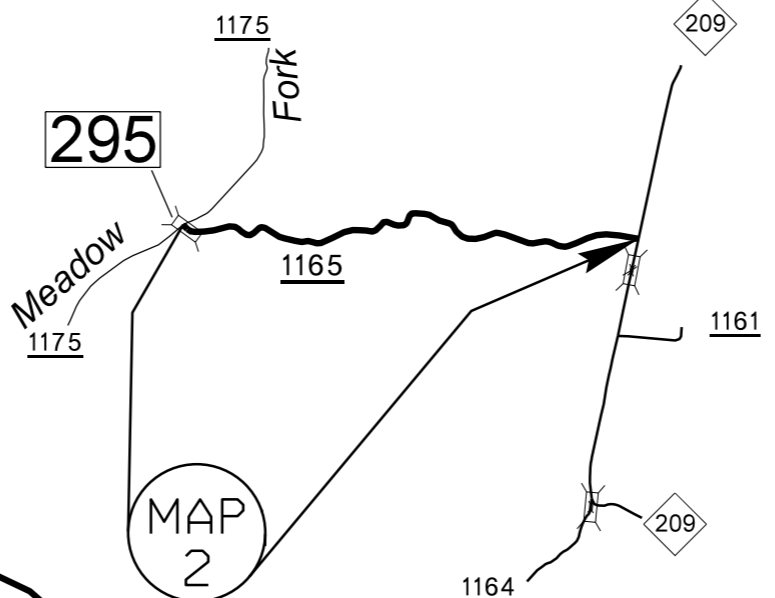
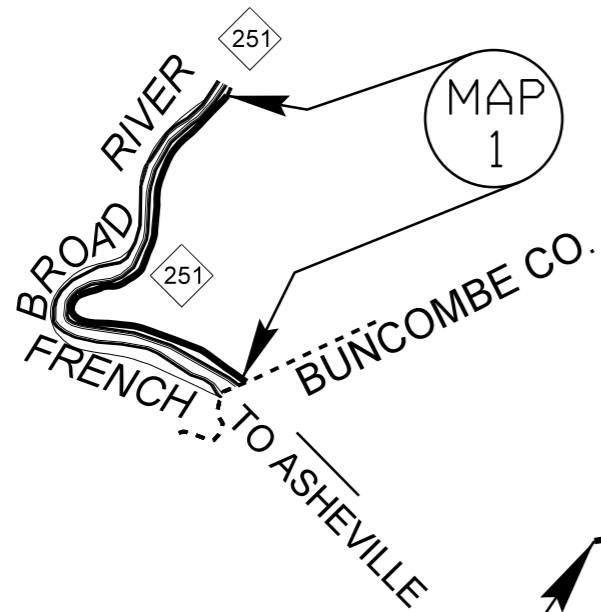
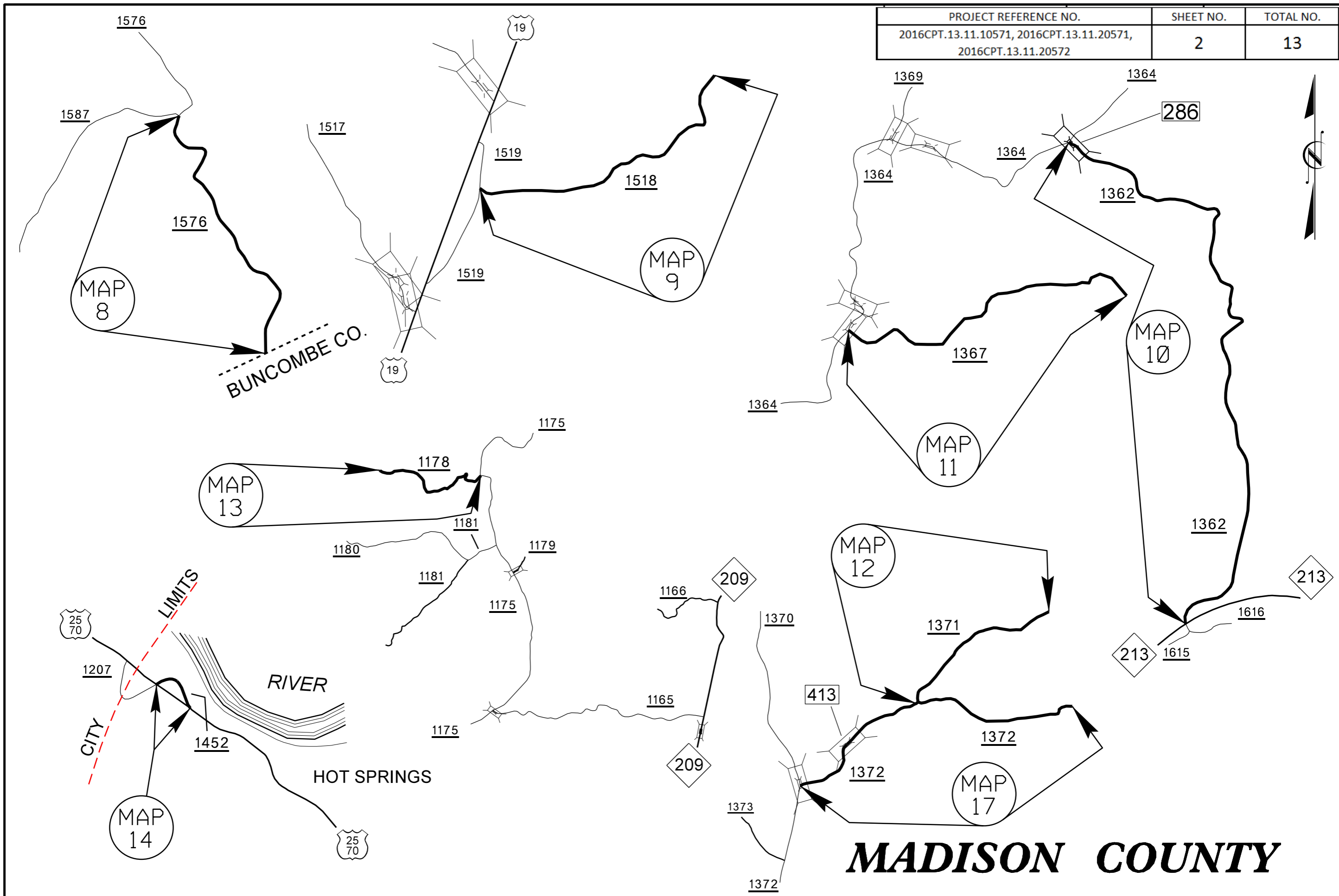


PROJECT REFERENCE NO.	SHEET NO.	TOTAL NO.
2016CPT.13.11.10571, 2016CPT.13.11.20571, 2016CPT.13.11.20572	1	13



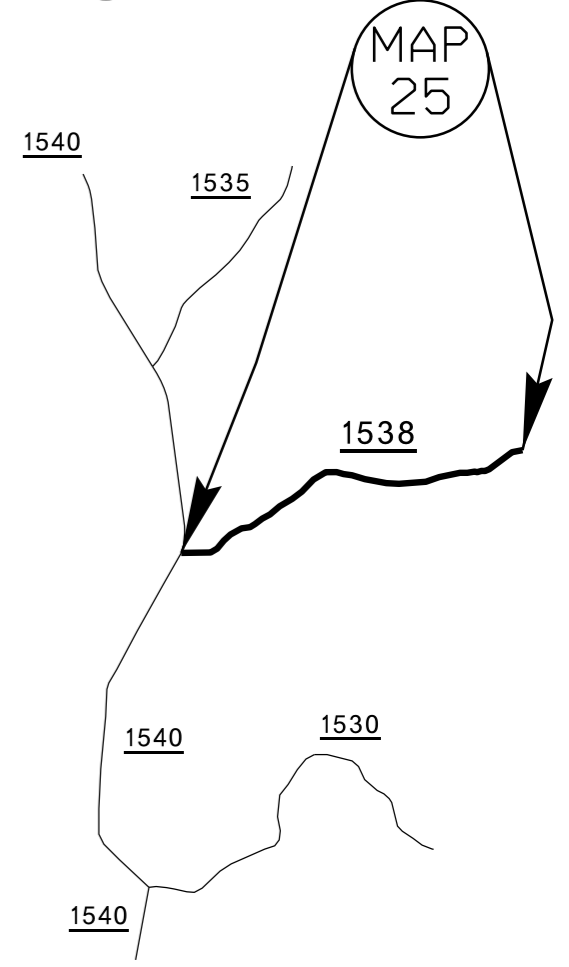
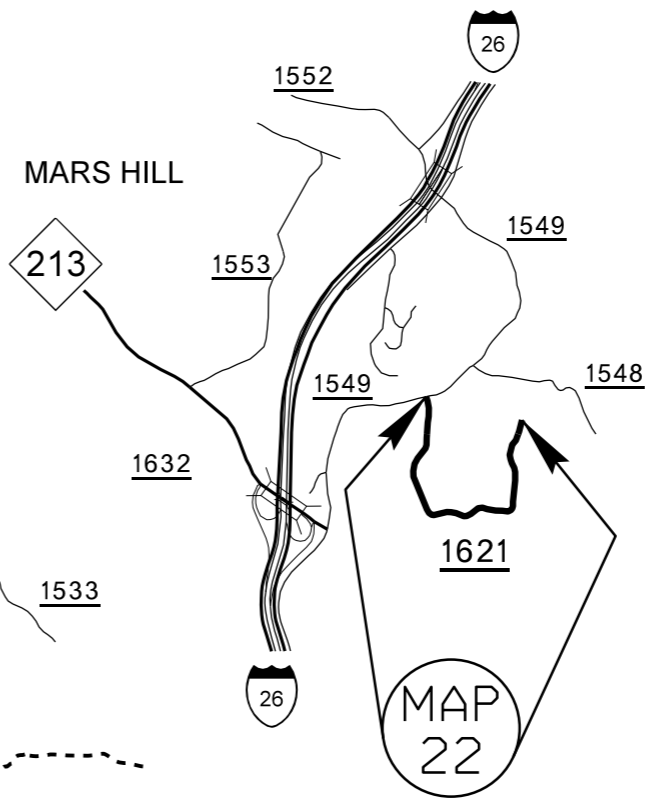
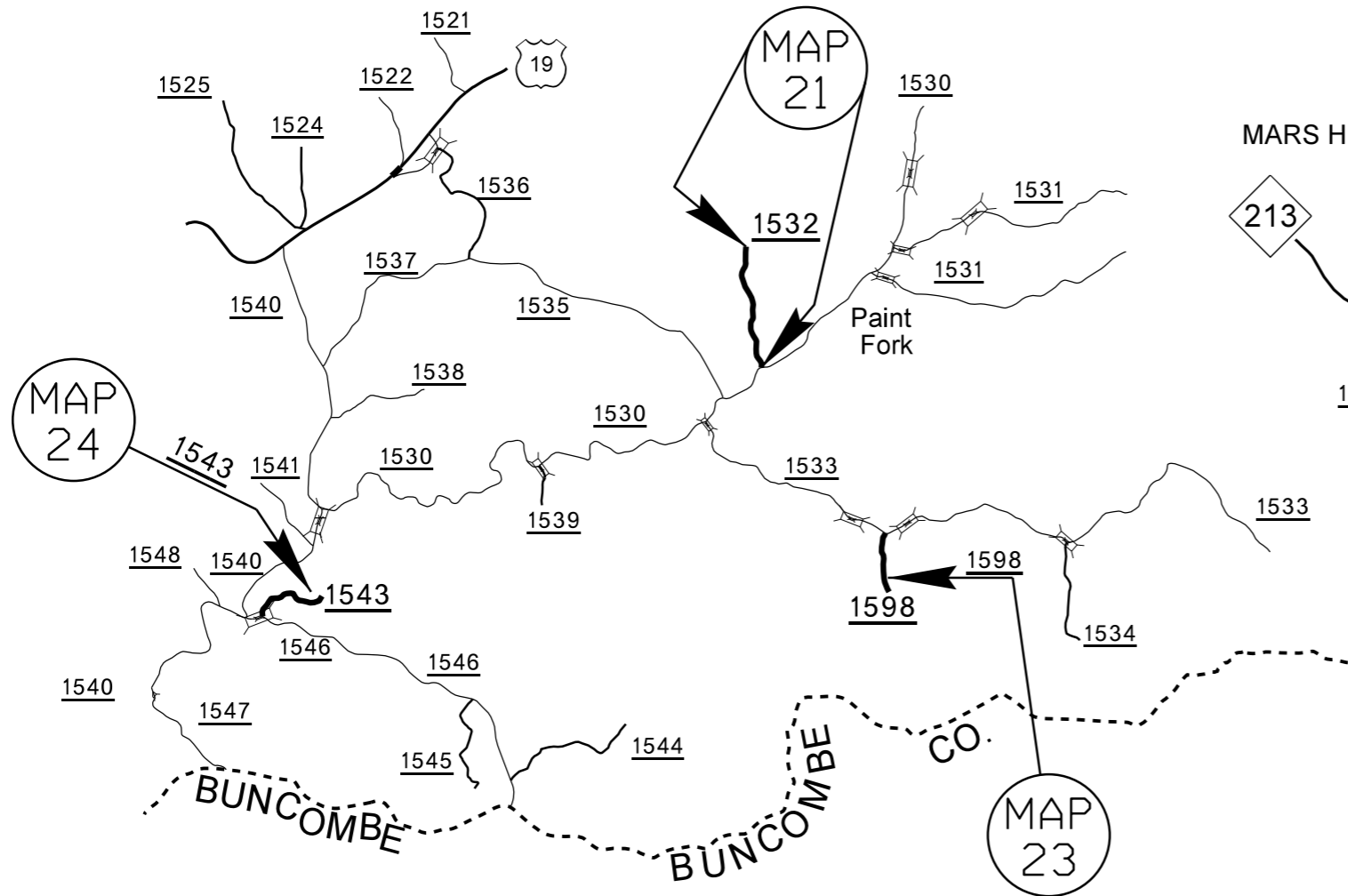
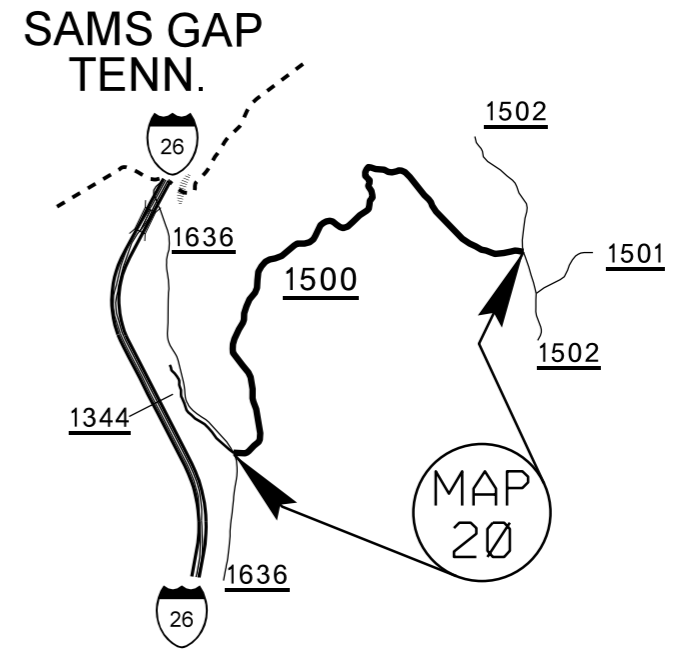
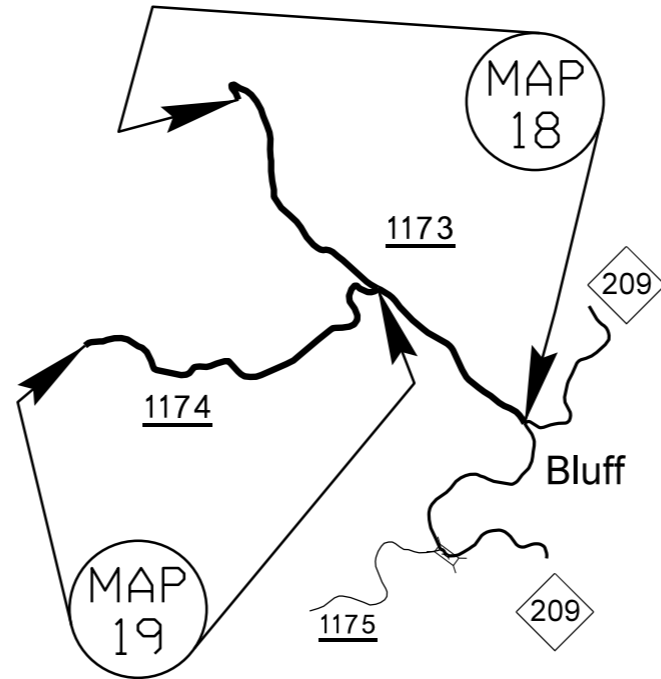
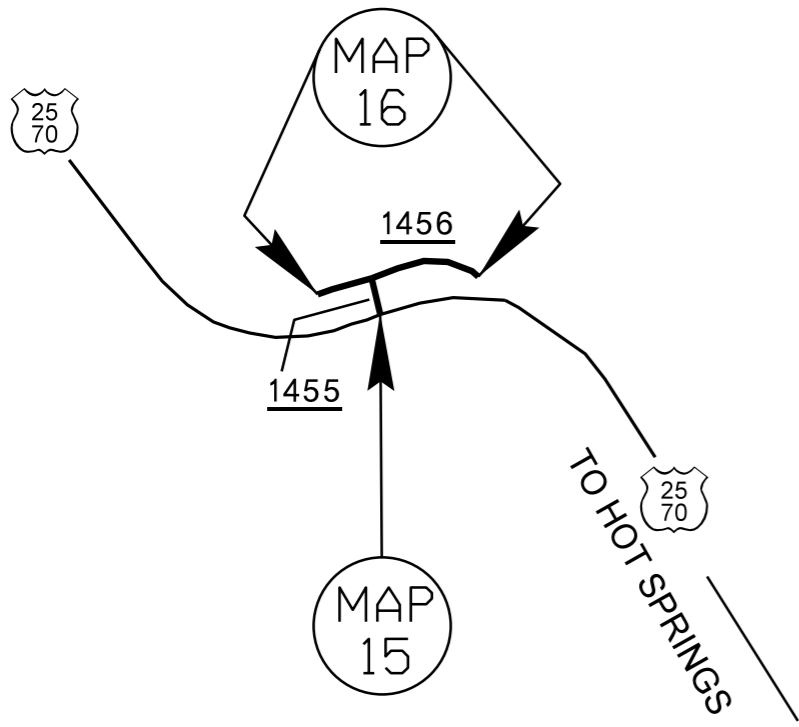
MADISON COUNTY

PROJECT REFERENCE NO.	SHEET NO.	TOTAL NO.
2016CPT.13.11.10571, 2016CPT.13.11.20571, 2016CPT.13.11.20572	2	13



MADISON COUNTY

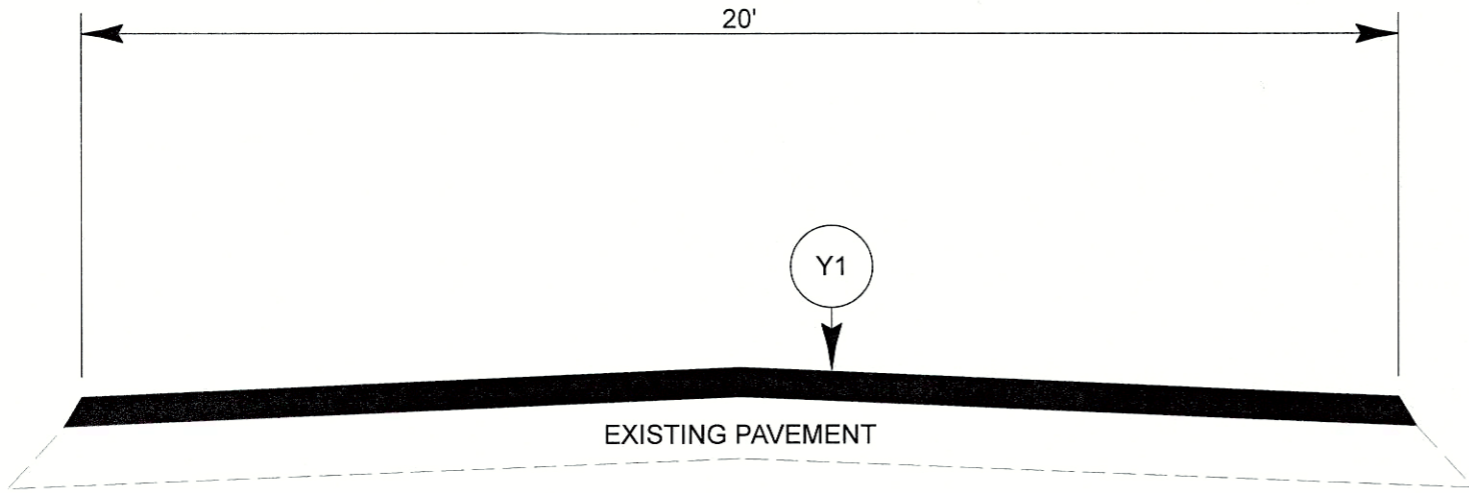
PROJECT REFERENCE NO.	SHEET NO.	TOTAL NO.
2016CPT.13.11.10571, 2016CPT.13.11.20571, 2016CPT.13.11.20572	3	13



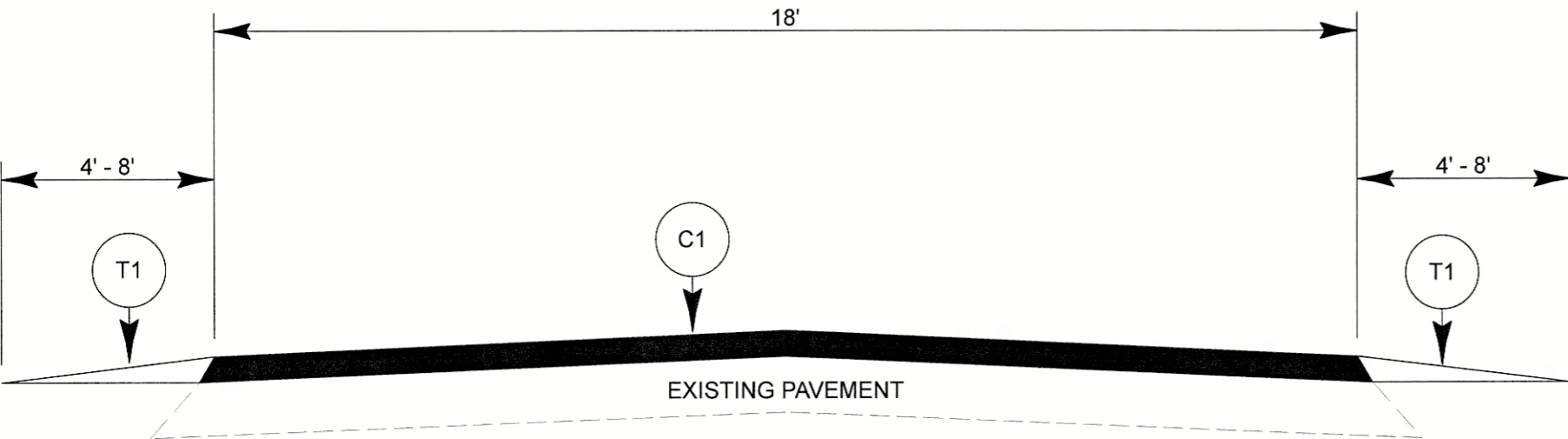
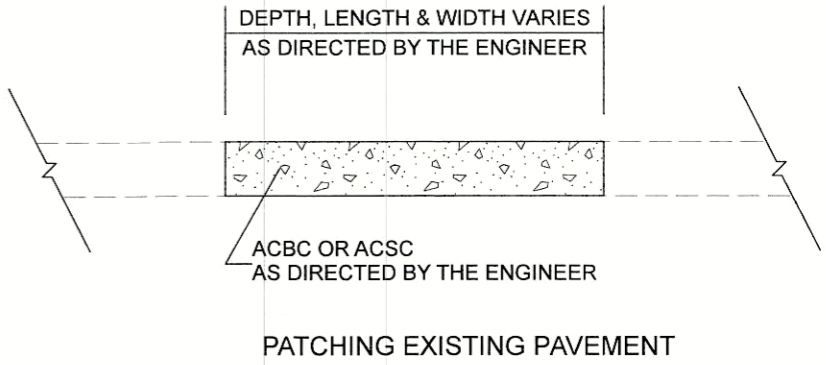
MADISON COUNTY



PROJECT REFERENCE NO.	SHEET NO.	TOTAL NO.
2016CPT.13.11.10571, 2016CPT.13.11.20571, 2016CPT.13.11.20572	4	13



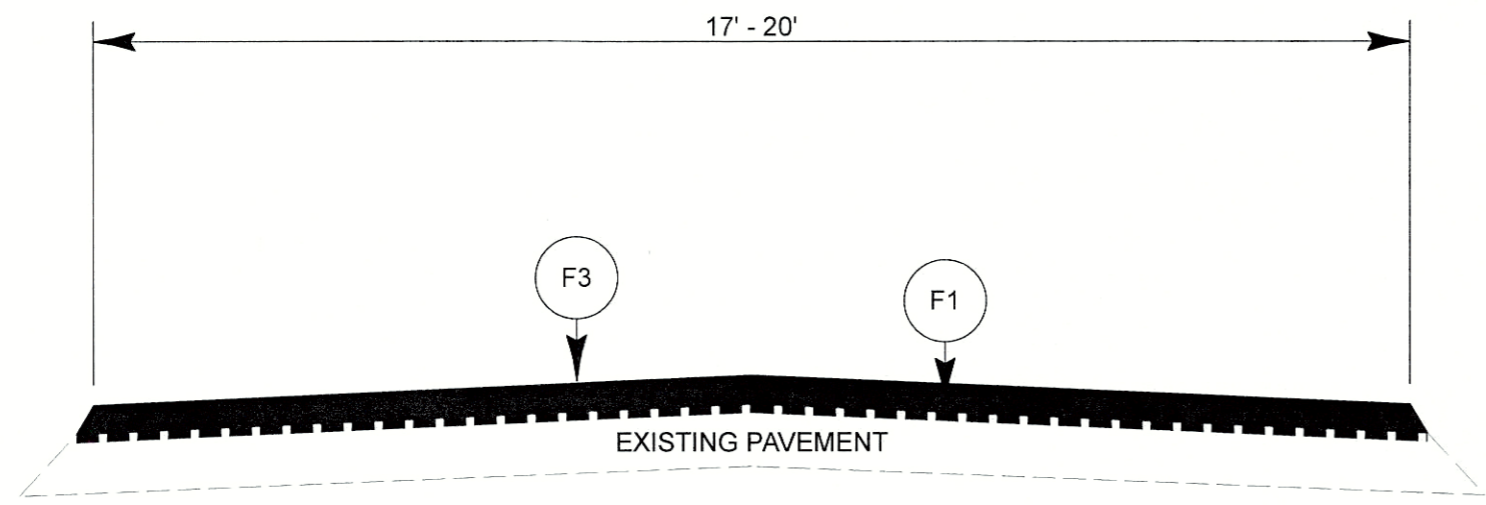
TYPICAL SECTION NO. 1



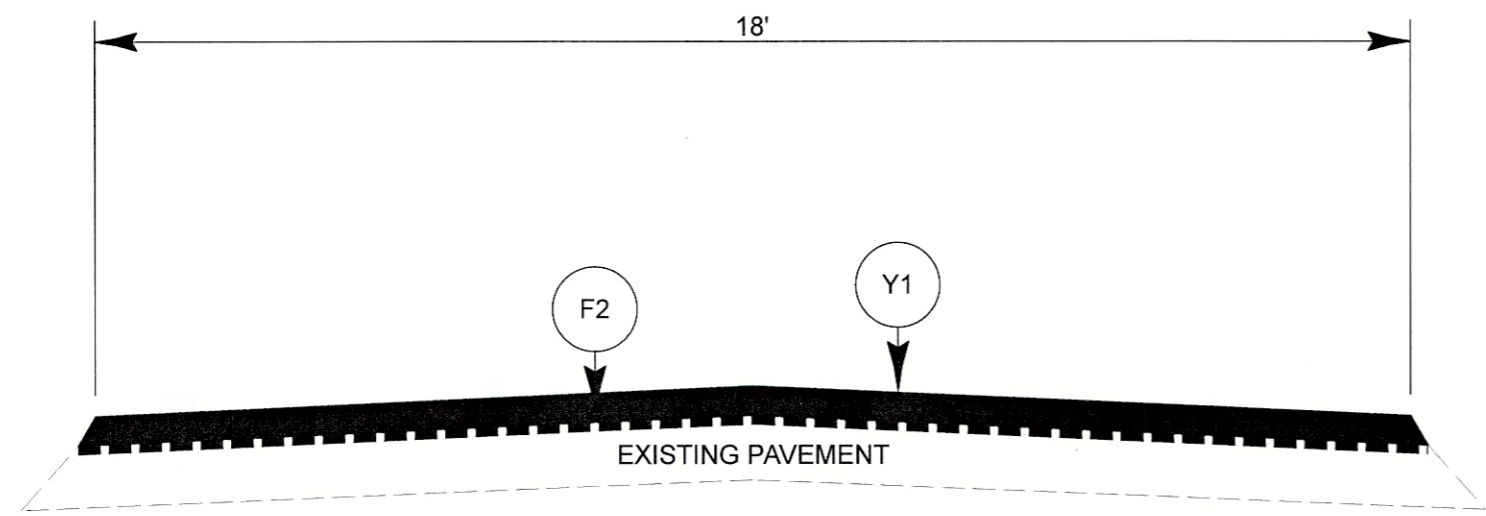
TYPICAL SECTION NO. 2

PAVEMENT SCHEDULE	
C1	PROP. APPROX. 1-1/2" ASPHALT CONCRETE SURFACE COURSE, TYPE SF9.5A, AT AN AVERAGE RATE OF 165 LBS. PER SQ. YARD
F1	ASPHALT SURFACE TREATMENT, DOUBLE SEAL
F2	ASPHALT SURFACE TREATMENT, SINGLE SEAL
F3	ASPHALT SURFACE TREATMENT, FOG SEAL
T1	SHOULDER RECONSTRUCTION
Y1	LATEX MODIFIED MICRO-SURFACING, TYPE III

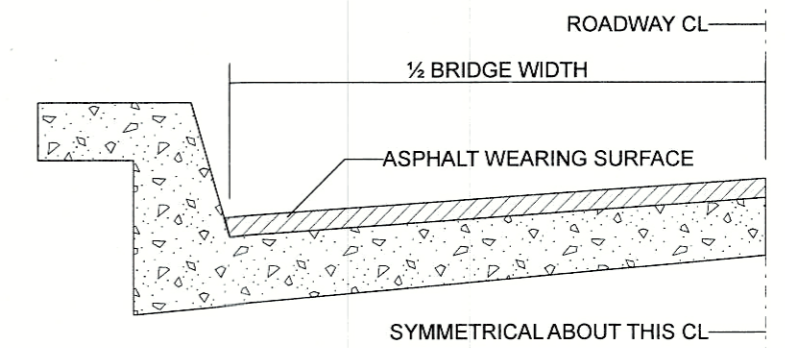
PROJECT REFERENCE NO.	SHEET NO.	TOTAL NO.
2016CPT.13.11.10571, 2016CPT.13.11.20571, 2016CPT.13.11.20572	5	13



TYPICAL SECTION NO. 3



TYPICAL SECTION NO. 4



BRIDGE HALF TYPICAL SECTION

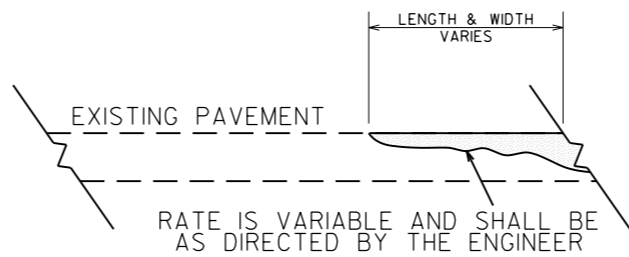
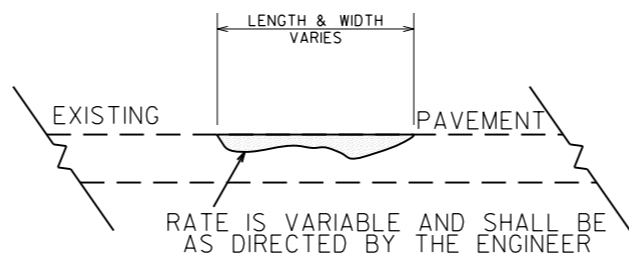
FOR BRIDGES WITH FLOOR DRAINS, CARE SHALL BE EXERCISED IN PLACING THE WEARING SURFACE AROUND FLOOR DRAINS SO AS NOT TO HINDER EFFECTIVE DRAINAGE. ALL DRAINS SHALL BE LEFT OPEN

THE PROPOSED WEARING SURFACE SHALL VARY IN THICKNESS AS NECESSARY TO PROVIDE A SMOOTH RIDING SURFACE. THE MINIMUM THICKNESS SHOULD DEPEND ON PAVEMENT TYPE AS FOLLOWS: S4.75A 1/2", SF9.5A 1.0", S9.5X 1.5", S12.5X 2.0", ULTRATHIN HOT MIX ASPHALT-TYPE A 3/4", ULTRATHIN HOT MIX ASPHALT-TYPE B 5/8", ULTRATHIN HOT MIX ASPHALT-TYPE C 1/2". THE MAXIMUM THICKNESS SHOULD DEPEND ON PAVEMENT TYPE AS FOLLOWS: S4.75A 1.0", SF9.5A 1.5", S9.5X 2.0", S12.5X 2.0", ULTRATHIN HOT MIX ASPHALT-TYPE A 3/4", ULTRATHIN HOT MIX ASPHALT-TYPE B 5/8", ULTRATHIN HOT MIX ASPHALT-TYPE C 1/2".

NOTES

- ALL UNPAVED ROADS TO BE RESURFACED 50' FROM EDGE OF PAVEMENT OF MAIN PROJECT.
- ALL PAVED S.R. ROADS TO BE RESURFACED TO THE ENDS OF THE RADII, OR AS DIRECTED BY THE ENGINEER.
- EDGES, PAVEMENT WIDENING, INTERSECTIONS AND BRIDGE FLARES ARE INCLUDED IN THE TABLE OF QUANTITIES.
- SHOULDER AND DITCHES ARE TO BE CONSTRUCTED BY OTHERS UNLESS OTHERWISE INDICATED.
- BRIDGES ARE TO BE RESURFACED AT LOCATIONS AND TO DEPTH AS DIRECTED BY THE ENGINEER.

PROJECT REFERENCE NO.	SHEET NO.	TOTAL NO.
2016CPT.13.11.10571, 2016CPT.13.11.20571, 2016CPT.13.11.20572	6	13

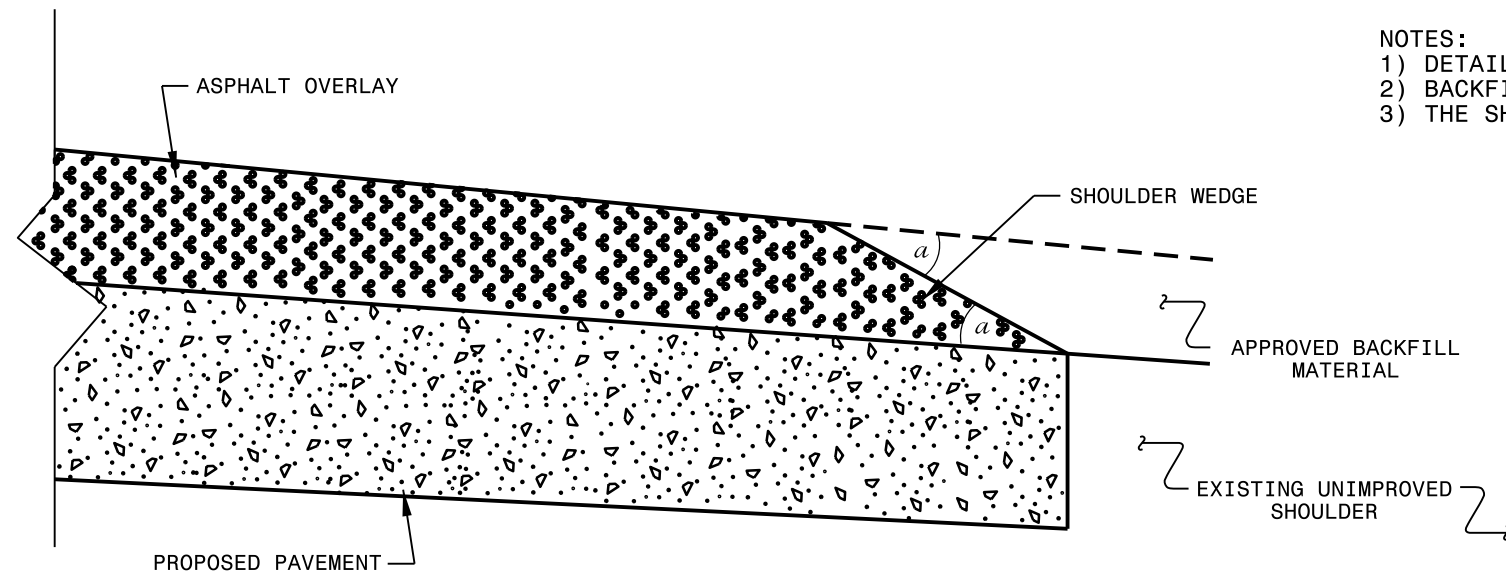


***DETAIL SHOWING
METHOD OF WEDGING***

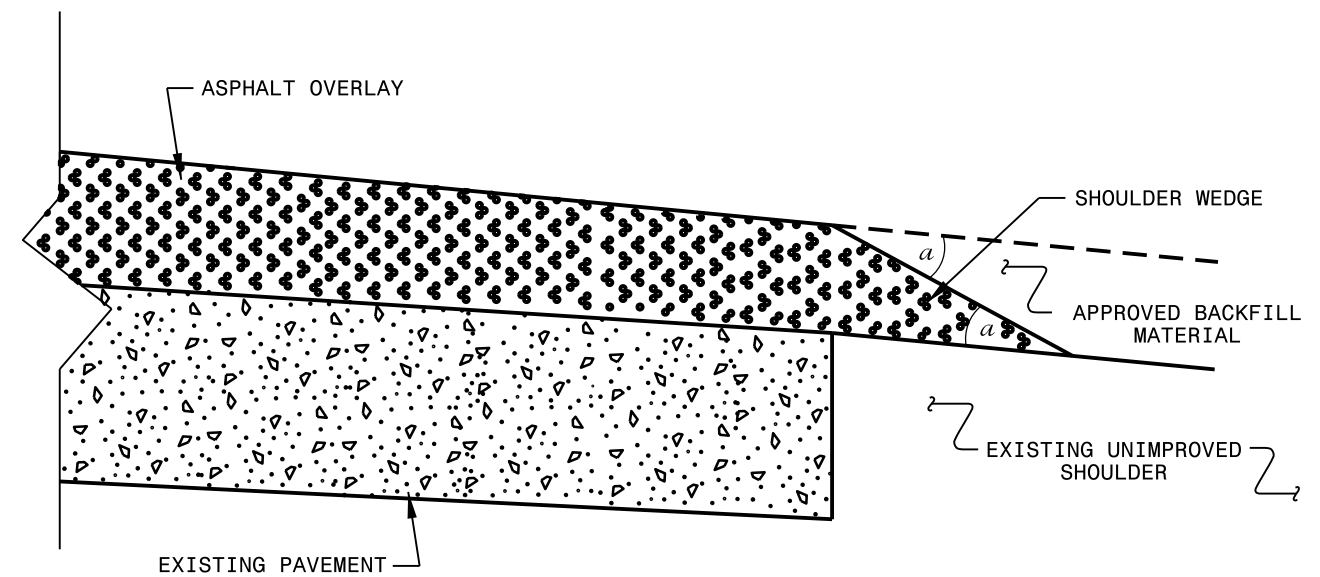
PROJECT REFERENCE NO.	SHEET NO.	TOTAL NO.
2016CPT.13.11.10571, 2016CPT.13.11.20571, 2016CPT.13.11.20572	7	13

NOTES:

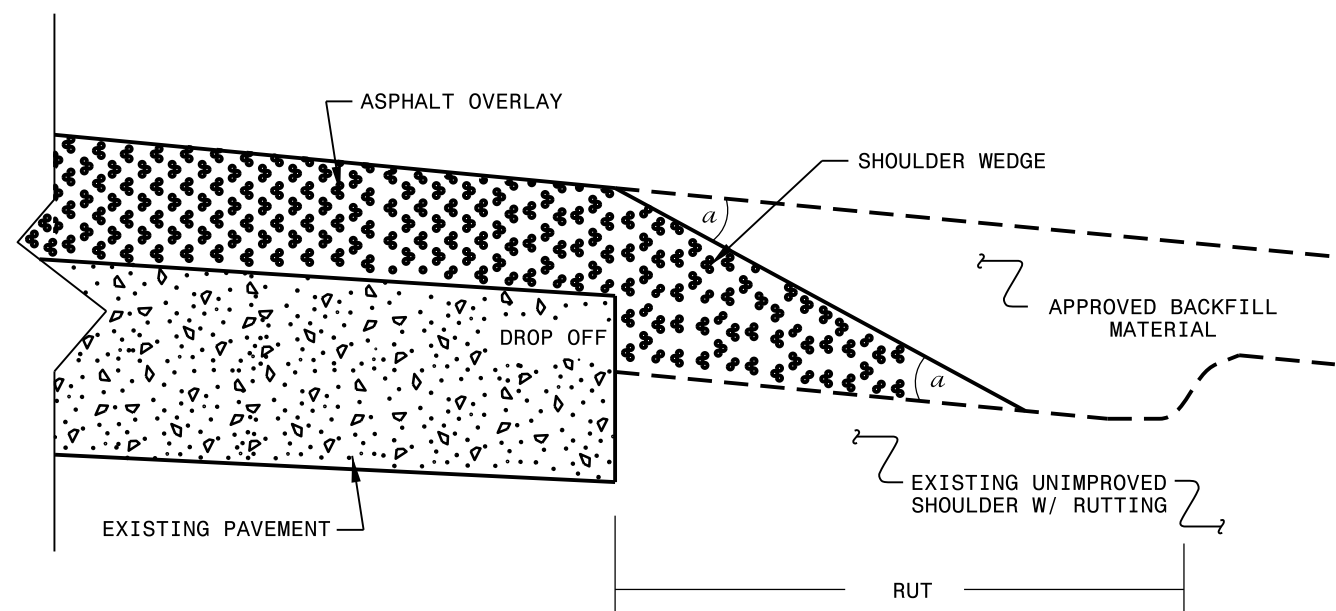
- 1) DETAIL DOES NOT APPLY TO OGAFD AND ULTRA-THIN BONDED WEARING COURSE.
- 2) BACKFILL SHOULDER WITH APPROVED MATERIAL.
- 3) THE SHOULDER WEDGE DEVICE MAY BE DISENGAGED AT PAVED DRIVEWAYS AND SIDE STREETS.



SHOULDER WEDGE DETAIL
(Resurfacing Projects w/ Widening or
with Existing Paved Shoulder having no dropoffs)



SHOULDER WEDGE DETAIL
(Resurfacing Projects w/ NO Widening)



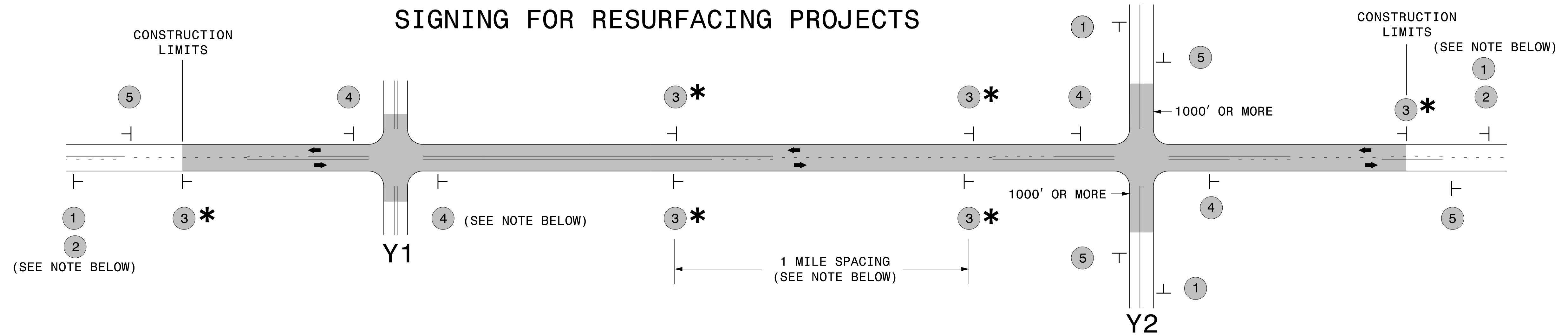
SHOULDER WEDGE DETAIL
(Resurfacing Adjacent to
Rutted Shoulder)

- SHOULDER WEDGE ANGLE = 30°

CONTRACT STANDARDS AND DEVELOPMENT UNIT			
Office 919-707-6950		FAX 919-250-4119	
SHOULDER WEDGE DETAILS			
ORIGINAL BY: T.SPELL	DATE: 7-19-11		
MODIFIED BY:	DATE: 10/16/12		
CHECKED BY:	DATE:		
FILE SPEC.: susr/details/stand/shoulderwedgedetail.dgn			

SYSTEMS DESIGN
USER NAME

SIGNING FOR RESURFACING PROJECTS



LEGEND	
	STATIONARY SIGN
←	DIRECTION OF TRAFFIC FLOW

MAINLINE (-L-) SIGNING

-Y- LINE SIGNING

SIGNING NOTES AND PLACEMENT PER DIRECTION	1	 <small>W20-1 48" X 48"</small>	PLACE 1000' PRIOR TO BEGINNING OF CONSTRUCTION LIMITS. ONLY USED ON -Y- LINES IF RESURFACING LIMITS EXTEND 1000' ALONG -Y- LINE.		
	2	 <small>W7-3aP 24" X 18"</small>	#2 SIGN ONLY USED WHEN RESURFACING LIMITS ARE 2 OR MORE MILES IN LENGTH. ROUND UP TO NEXT WHOLE NUMBER. (NO FRACTIONAL OR DECIMAL NUMBERS)		
	3 *	 <small>SP 13107 48" X 48"</small>	PLACE INITIALLY AT THE CONSTRUCTION LIMITS AND SPACED 1 MILE APART THEREAFTER. IF NO -Y- LINES EXIST, PLACE 2ND SET 1/2 MILE FROM THE CONSTRUCTION LIMITS AND THEN SPACE 1 MILE THEREAFTER.		
	4	 <small>SP 13106 48" X 48"</small>	THESE ARE FOR -Y- LINES THAT ARE "THROUGH" ROADWAYS. DEAD END AND SUBDIVISION ROADS ARE NOT "THROUGH" ROADWAYS. INSTALL 500' +/- FROM EACH -Y- LINE APPROACH AS SHOWN ABOVE. FOR MULTIPLE -Y- LINES THAT ARE SEPARATED BY 0.25 MILES OR LESS, TREAT AS A SINGLE UNIT AND INSTALL WITHIN 500' OF EACH APPROACH. A MAXIMUM OF 2 SIGN SETS PER MILE. DO NOT INSTALL WHEN -Y- LINES ARE WITHIN 0.5 MILES FROM "END ROAD WORK" SIGN.		
	5	 <small>G20-2 A 48" X 24"</small>	PLACE 500' FOLLOWING THE END OF CONSTRUCTION LIMITS.		

NO REQUIRED STATIONARY SIGNING FOR THE FOLLOWING -Y- LINE CONDITIONS:

- 1) LESS THAN 1000' OF RESURFACING ALONG -Y- LINE
- 2) SUBDIVISION ROADS
- 3) DEAD END ROADS

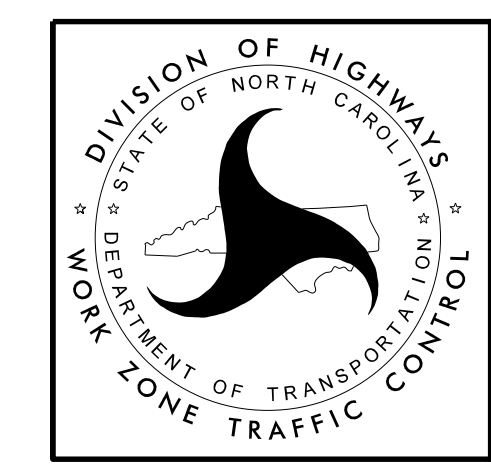
WHEN PAVING/CONSTRUCTION ACTIVITIES PROCEED ACROSS AN UNSIGNED -Y- LINE, ADVANCE WARNING PORTABLE SIGNS SHALL BE USED ALONG THE -Y- LINE AS SHOWN BELOW. REMOVE UPON COMPLETION OF WORK.



PLACED 500' IN ADVANCE OF FLAGGER. PLACED 250' IN ADVANCE OF FLAGGER.

* SIGNING FOR ASPHALT SURFACE TREATMENTS (ONLY)

SUBSTITUTE LOW/SOFT SHOULDER SIGNS BY ALTERNATING THE FOLLOWING TWO SIGNS:
 STARTING WITH "UNMARKED PAVEMENT AHEAD" (SP 06026) FOLLOWED BY "LOOSE GRAVEL" (W8-7).



**RESURFACING
ADVANCE WARNING SIGNS
FOR
RURAL AND SUBURBAN
2 LANE ROADWAYS**

6/3/2014 S:\TMU\WZTC\Apps\WorkZoneGeneral\ExternalWebPage\DesRes\Resurfacing\Resurfacing_AdvWarn_2Ln.dgn User:rmgarr.eht

SIGN NUMBER: 11299

BACKG COLOR: Fluorescent Orange

DESIGN BY: WJ

CHECKED BY:

DATE: Jun 22, 2011

TYPE: B

COPY COLOR: Black

PROJECT ID: ALL

DIV: ALL

QUANTITY: SEE PLANS

SYMBOL	X	Y	WID	HT

SIGN WIDTH: 5'-6"

HEIGHT: 5'-6"

SP 11299

PROJECT REFERENCE NO.	SHEET NO.	TOTAL NO.
2016CPT.13.11.10571, 2016CPT.13.11.20571, 2016CPT.13.11.20572	9	13

TOTAL AREA: 30.5 Sq.Ft.

BORDER TYPE: INSET

RECESS: 0.59"

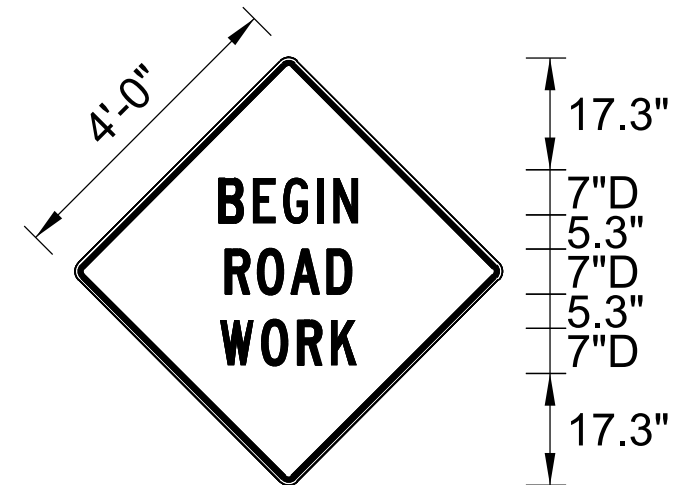
WIDTH: 0.75"

RADII: 1.38"

NO. Z BARS: N/A

LENGTH: N/A

MAT'L: 0.125" (3.2 mm) ALUMINUM



BORDER
R=1.38"
TH=0.75"
IN=0.59"

Spacing Factor is 1 unless specified otherwise

USE NOTES: 1,2

- Legend and border shall be direct applied black non-reflective sheeting.
- Background shall be Type VII, VIII, or IX (prismatic) fluorescent orange retroreflective sheeting.

LETTER POSITIONS

Letter spacings are to start of next letter																	Series/Size	
																	Text Length	
		B	E	G	I	N												D 2000
	20.5	6	5.4	6.3	2.8	4.8	20.5											25.2
		R	O	A	D													D 2000
	21.4	5.8	5.9	7	4.8	21.4												23.5
		W	O	R	K													D 2000
	20.9	7.1	6.5	5.9	4.9	20.9												24.5

SIGN NUMBER: SP13106
 TYPE: STATIONARY
 QUANTITY: SEE PLANS

BACKG COLOR: Fluorescent Orange
 COPY COLOR: Black

DESIGN BY: B. RASHID
 PROJECT ID:

CHECKED BY: AIA
 DIV:

DATE: Apr 26, 2013

SYMBOL	X	Y	WID	HT

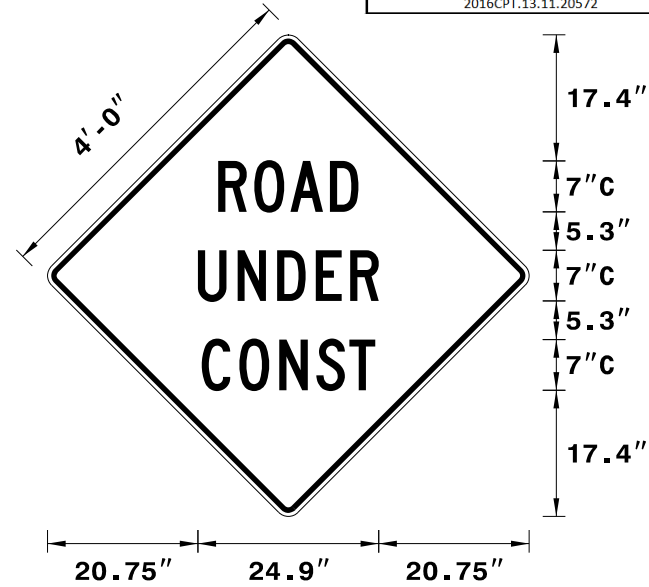
SIGN WIDTH: 4'-0"
 HEIGHT: 4'-0"
 TOTAL AREA: 16.00 Sq.Ft.

BORDER TYPE: INSET
 RECESS: 0.75"
 WIDTH: 1.25"
 RADII: 3"

NO. Z BARS:
 LENGTH:

MAT'L: 0.080" (2.0 mm) ALUMINUM

PROJECT REFERENCE NO.	SHEET NO.	TOTAL NO.
2016CPT.13.11.10571, 2016CPT.13.11.20571, 2016CPT.13.11.20572	10	13



Spacing Factor is 1 unless specified otherwise

USE NOTES: 1,2

- Legend and border shall be direct applied black non-reflective sheeting.
- Background shall be NC GRADE B fluorescent orange retroreflective sheeting.

LETTER POSITIONS

Letter spacings are to start of next letter

Letter spacings are to start of next letter																	Series/Size Text Length	
		R	O	A	D													C 2000
23.5	5	5	5.5	3.9	23.5													19.3
		U	N	D	E	R												C 2000
20.7	5.5	5.5	5.3	4.8	3.9	20.7												24.9
		C	O	N	S	T												C 2000
21.2	5.2	5.5	5.1	4.6	3.6	21.2												23.9

SIGN NUMBER: SP13107
 TYPE: STATIONARY
 QUANTITY: SEE PLANS

BACKG COLOR: Fluorescent Orange
 COPY COLOR: Black

DESIGN BY: B. RASHID
 PROJECT ID:

CHECKED BY: AIA
 DIV:

DATE: Apr 26, 2013

SYMBOL	X	Y	WID	HT

SIGN WIDTH: 4'-0"
 HEIGHT: 4'-0"
 TOTAL AREA: 16.00 Sq.Ft.

BORDER TYPE: INSET
 RECESS: 0.75"
 WIDTH: 1.25"
 RADII: 3"

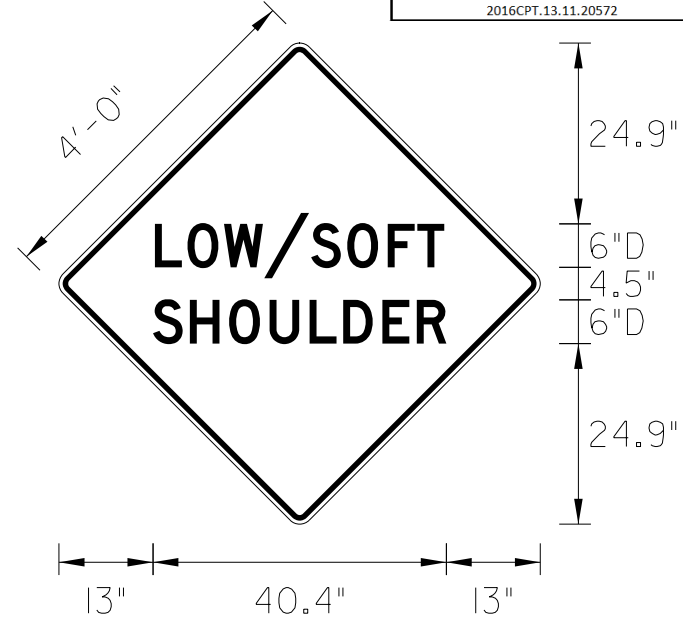
MAT'L: 0.080" (2.0 mm) ALUMINUM

NO. Z BARS:
 LENGTH:

USE NOTES: 1,2

1. Legend and border shall be direct applied black non-reflective sheeting.
2. Background shall be NC GRADE B fluorescent orange retroreflective sheeting.

PROJECT REFERENCE NO.	SHEET NO.	TOTAL NO.
2016CPT.13.11.10571, 2016CPT.13.11.20571, 2016CPT.13.11.20572	11	13



Spacing Factor is 1 unless specified otherwise

LETTER POSITIONS

Letter spacings are to start of next letter											Series/Size
											Text Length
	L	O	W	/	S	O	F	T			D 2000
13.2	4.5	5	5.5	6.5	5	5.6	4.1	3.7	13.2		39.9
	S	H	O	U	L	D	E	R			D 2000
13	5.1	5.4	5.6	5.5	4.6	5.4	4.7	4.1	13		40.4

PROJECT REFERENCE NO.	SHEET NO.	TOTAL NO.
2016CPT.13.11.10571, 2016CPT.13.11.20571, 2016CPT.13.11.20572	12	13

SUMMARY OF QUANTITIES

PROJECT NO	COUNTY	MAP NO	ROUTE	DESCRIPTION	TYP NO	LANES	LANE TYPE	FINAL SURFACE TESTING REQUIRED	WARM MIX ASPHALT REQUIRED	LENGTH MI	WIDTH FT	INCIDENTAL STONE BASE TON	SHOULDER RECONSTRUCTION SMI	ASPHALT CONC SURFACE COURSE, TYPE SF9.5A TON	ASPHALT BINDER FOR PLANT MIX TON	PATCHING EXISTING PAVEMENT TON	ASPHALT SURFACE TREATMENT, DOUBLE SEAL SY	ASPHALT SURFACE TREATMENT, SINGLE SEAL SY	ASPHALT SURFACE TREATMENT, FOG SEAL SY	EMULSION FOR ASPHALT SURFACE TREATMENT GAL	GENERIC PAVING ITEM LATEX MODIFIED MICRO-SURFACING, TYPE III SY	
2016CPT.13.11.10571	Madison	1	NC 251	FROM BUNCOMBE COUNTY LINE FOR 2 MILES (MP 0.00 - MP 2.00)	1	2	2WU	NO	NO	2	20										23,467	
TOTAL FOR PROJ NO. 2016CPT.13.11.10571										2												23,467
2016CPT.13.11.20571	Madison	2	SR 1165	FROM SR 1175 TO NC 209 (MP 0.00 TO MP 2.10)	2	2	2WU	NO	NO	2.1	18	105	4.20	2,026	136	600						
		3	SR 1302	FROM SR 1303 TO EOM (MP 0.00 - MP 0.69)	3	2	2WU	NO	NO	0.69	18					75	7,286		7,286		4,010	
		4	SR 1323	FROM SR 1334 TO EOM (MP 0.00 - MP 1.19)	3	2	2WU	NO	NO	1.19	18					350	12,566		12,566		6,915	
		5	SR 1326	FROM SR 1323 TO EOM (MP 0.00 - MP 0.70)	3	2	2WU	NO	NO	0.7	18					125	7,392		7,392		4,070	
		6	SR 1397	FROM SR 1395 TO EOM (MP 0.00 - MP 0.94)	3	2	2WU	NO	NO	0.94	18					175	9,926		9,926		5,460	
		7	SR 1398	FROM SR 1395 TO EOM (MP 0.00 - MP 0.46)	3	2	2WU	NO	NO	0.46	18					100	4,858		4,858		2,675	
		8	SR 1576	FROM BUNCOMBE COUNTY LINE TO SR 1587 (MP 0.00 - MP 0.84)	3	2	2WU	NO	NO	0.84	20					300	9,856		9,856		5,425	
		9	SR 1518	FROM SR 1519 TO EOM (MP 0.00 - MP 0.61)	3	2	2WU	NO	NO	0.61	18					50	6,442		6,442		3,545	
		10	SR 1362	FROM NC 213 TO SR 1364 (MP 0.00 - MP 2.28)	3	2	2WU	NO	NO	2.28	18					200	24,077		24,077		13,245	
		11	SR 1367	FROM SR 1364 TO EOM (MP 0.00 - MP 0.90)	3	2	2WU	NO	NO	0.9	18					200	9,504		9,504		5,230	
		12	SR 1371	FROM SR 1372 TO EOM (MP 0.00 - MP 0.54)	3	2	2WU	NO	NO	0.54	18					50	5,702		5,702		3,140	
		13	SR 1178	FROM SR 1175 TO EOM (MP 0.00 - MP 1.07)	3	2	2WU	NO	NO	1.07	18					300	11,299		11,299		6,215	
		14	SR 1452	FROM US 25/70 TO US 25/70 (MP 0.00 - MP 0.12)	3	2	2WU	NO	NO	0.12	20					10	1,408		1,408		775	
		15	SR 1455	FROM US 25/70 TO SR 1456 (MP 0.00 - MP 0.03)	3	2	2WU	NO	NO	0.03	20					15	352		352		195	
		16	SR 1456	FROM EOP TO EOP (MP 0.00 - MP 0.14)	3	2	2WU	NO	NO	0.14	20						1,643		1,643		905	
		17	SR 1372	FROM SR 1370 TO EOM (MP 0.00 - MP 1.20)	3	2	2WU	NO	NO	1.2	18					250	12,672		12,672		6,970	
TOTAL FOR PROJ NO. 2016CPT.13.11.20571										13.81		105	4.20	2,026	136	2,800	124,983		124,983		68,775	
2016CPT.13.11.20572	Madison	18	SR 1173	FROM NC 209 TO EOP (MP 0.00 - MP 1.35)	3	2	2WU	NO	NO	1.35	17					150	13,464		13,464		7,410	
		19	SR 1174	FROM SR 1173 TO EOP (MP 0.00 - MP 1.18)	3	2	2WU	NO	NO	1.18	18					200	12,461		12,461		6,855	
		20	SR 1500	FROM SR 1636 TO SR 1502 (MP 0.00 - MP 3.09)	3	2	2WU	NO	NO	3.09	20					100	36,256		36,256		19,945	
		21	SR 1532	FROM SR 1530 TO EOP (MP 0.00 - MP 0.61)	3	2	2WU	NO	NO	0.61	18					100	6,442		6,442		3,545	
		22	SR 1621	FROM SR 1549 TO EOP (MP 0.00 - MP 0.87)	4	2	2WU	NO	NO	0.87	18					80		9,187		3,220	9,187	
		23	SR 1598	FROM SR 1533 TO EOP (MP 0.00 - MP 0.31)	3	2	2WU	NO	NO	0.31	18					40	3,274		3,274		1,805	
		24	SR 1543	FROM SR 1546 TO EOP (MP 0.00 - MP 0.35)	3	2	2WU	NO	NO	0.35	18					40	3,696		3,696		2,035	
		25	SR 1538	FROM SR 1540 TO EOP (MP 0.00 - MP 0.49)	3	2	2WU	NO	NO	0.49	18					75	5,174		5,174		2,850	
TOTAL FOR PROJ NO. 2016CPT.13.11.20572										8.25						785	80,767	9,187	80,767		47,665	9,187
GRAND TOTAL										24.06		105	4.20	2,026	136	3,585	205,750	9,187	205,750	116,440	32,654	

PROJECT REFERENCE NO.	SHEET NO.	TOTAL NO.
2016CPT.13.11.10571, 2016CPT.13.11.20571, 2016CPT.13.11.20572	13	13

THERMOPLASTIC AND PAINT QUANTITIES

PROJECT NO	COUNTY	MAP NO	ROUTE	DESCRIPTION	TYP	LANES	LANE TYPE	LENGTH	WIDTH	441300000-E	445700000-N	481000000-E		484700000-E		485000000-E	490500000-N		
										WORK ZONE ADVANCE/ GENERAL WARNING SIGNING SF	TEMPORARY TRAFFIC CONTROL LS	PAINT PAVEMENT MARKING LINES (4") WHITE LF	PAINT PAVEMENT MARKING LINES (4") YELLOW LF	POLYUREA PAVEMENT MARKING LINES (4") WHITE (HIGHLY REFLECTIVE ELEMENTS) LF	POLYUREA PAVEMENT MARKING LINES (4") YELLOW (HIGHLY REFLECTIVE ELEMENTS) LF	REMOVAL OF PAVEMENT MARKING LINES (4") LF	SNOWPLOWABLE PAVEMENT MARKERS EA		
2016CPT.13.11.10571	Madison	1	NC 251	FROM BUNCOMBE COUNTY LINE FOR 2 MILES (MP 0.00 - MP 2.00)	1	2	2WU	2	20	224	*			21,120	21,120	42,240	132		
TOTAL FOR PROJ NO. 2016CPT.13.11.10571										224	1			21,120	21,120	42,240	132		
												42,240							
2016CPT.13.11.20571	Madison	2	SR 1165	FROM SR 1175 TO NC 209 (MP 0.00 TO MP 2.10)	2	2	2WU	2.1	18	1,560	*			22,176	22,176				
		3	SR 1302	FROM SR 1303 TO EOM (MP 0.00 - MP 0.69)	3	2	2WU	0.69	18										
		4	SR 1323	FROM SR 1334 TO EOM (MP 0.00 - MP 1.19)	3	2	2WU	1.19	18			25,133	25,133						
		5	SR 1326	FROM SR 1323 TO EOM (MP 0.00 - MP 0.70)	3	2	2WU	0.7	18			14,784	14,784						
		6	SR 1397	FROM SR 1395 TO EOM (MP 0.00 - MP 0.94)	3	2	2WU	0.94	18			19,853	19,853						
		7	SR 1398	FROM SR 1395 TO EOM (MP 0.00 - MP 0.46)	3	2	2WU	0.46	18										
		8	SR 1576	FROM BUNCOMBE COUNTY LINE TO SR 1587 (MP 0.00 - MP 0.84)	3	2	2WU	0.84	20			17,741	17,741						
		9	SR 1518	FROM SR 1519 TO EOM (MP 0.00 - MP 0.61)	3	2	2WU	0.61	18										
		10	SR 1362	FROM NC 213 TO SR 1364 (MP 0.00 - MP 2.28)	3	2	2WU	2.28	18			48,154	48,154						
		11	SR 1367	FROM SR 1364 TO EOM (MP 0.00 - MP 0.90)	3	2	2WU	0.9	18			19,008	19,008						
		12	SR 1371	FROM SR 1372 TO EOM (MP 0.00 - MP 0.54)	3	2	2WU	0.54	18			11,405	11,405						
		13	SR 1178	FROM SR 1175 TO EOM (MP 0.00 - MP 1.07)	3	2	2WU	1.07	18			22,598	22,598						
		14	SR 1452	FROM US 25/70 TO US 25/70 (MP 0.00 - MP 0.12)	3	2	2WU	0.12	20										
		15	SR 1455	FROM US 25/70 TO SR 1456 (MP 0.00 - MP 0.03)	3	2	2WU	0.03	20										
		16	SR 1456	FROM EOP TO EOP (MP 0.00 - MP 0.14)	3	2	2WU	0.14	20										
		17	SR 1372	FROM SR 1370 TO EOM (MP 0.00 - MP 1.20)	3	2	2WU	1.2	18			25,344	25,344						
TOTAL FOR PROJ NO. 2016CPT.13.11.20571												1,560	1	204,020	204,020	22,176	22,176		
												408,040		44,352					
2016CPT.13.11.20572	Madison	18	SR 1173	FROM NC 209 TO EOP (MP 0.00 - MP 1.35)	3	2	2WU	1.35	17	934	*	28,512	28,512						
		19	SR 1174	FROM SR 1173 TO EOP (MP 0.00 - MP 1.18)	3	2	2WU	1.18	18			24,922	24,922						
		20	SR 1500	FROM SR 1636 TO SR 1502 (MP 0.00 - MP 3.09)	3	2	2WU	3.09	20			65,261	65,261						
		21	SR 1532	FROM SR 1530 TO EOP (MP 0.00 - MP 0.61)	3	2	2WU	0.61	18										
		22	SR 1621	FROM SR 1549 TO EOP (MP 0.00 - MP 0.87)	4	2	2WU	0.87	18					9187	9187				
		23	SR 1598	FROM SR 1533 TO EOP (MP 0.00 - MP 0.31)	3	2	2WU	0.31	18										
		24	SR 1543	FROM SR 1546 TO EOP (MP 0.00 - MP 0.35)	3	2	2WU	0.35	18										
		25	SR 1538	FROM SR 1540 TO EOP (MP 0.00 - MP 0.49)	3	2	2WU	0.49	18										
TOTAL FOR PROJ NO. 2016CPT.13.11.20572										934	1	118,695	118,695	9,187	9,187				
												237,390		18,374					
GRAND TOTAL									24.06	1	322,715	322,715	52,483	52,483	42,240	132			
												645,430		104,966					