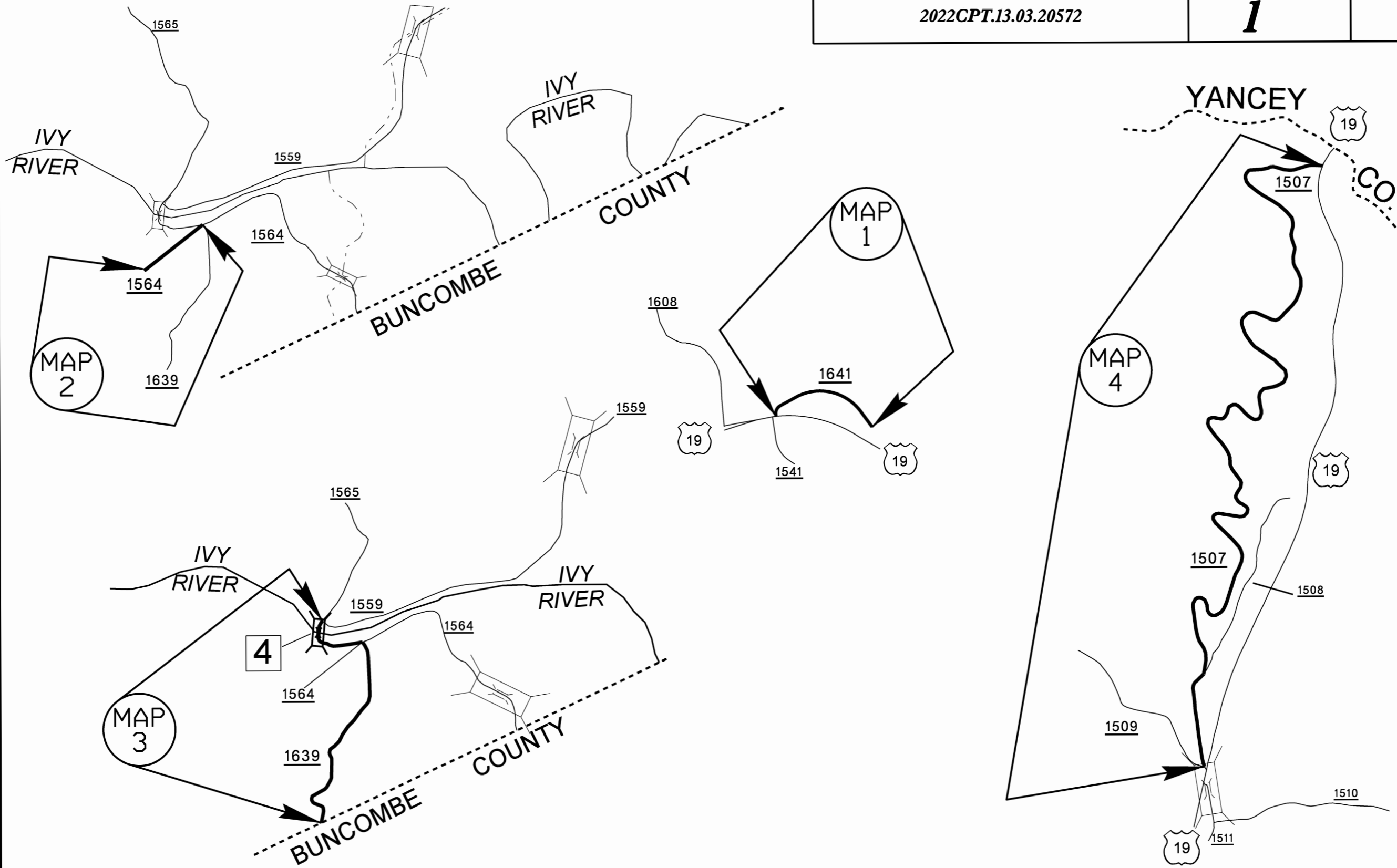
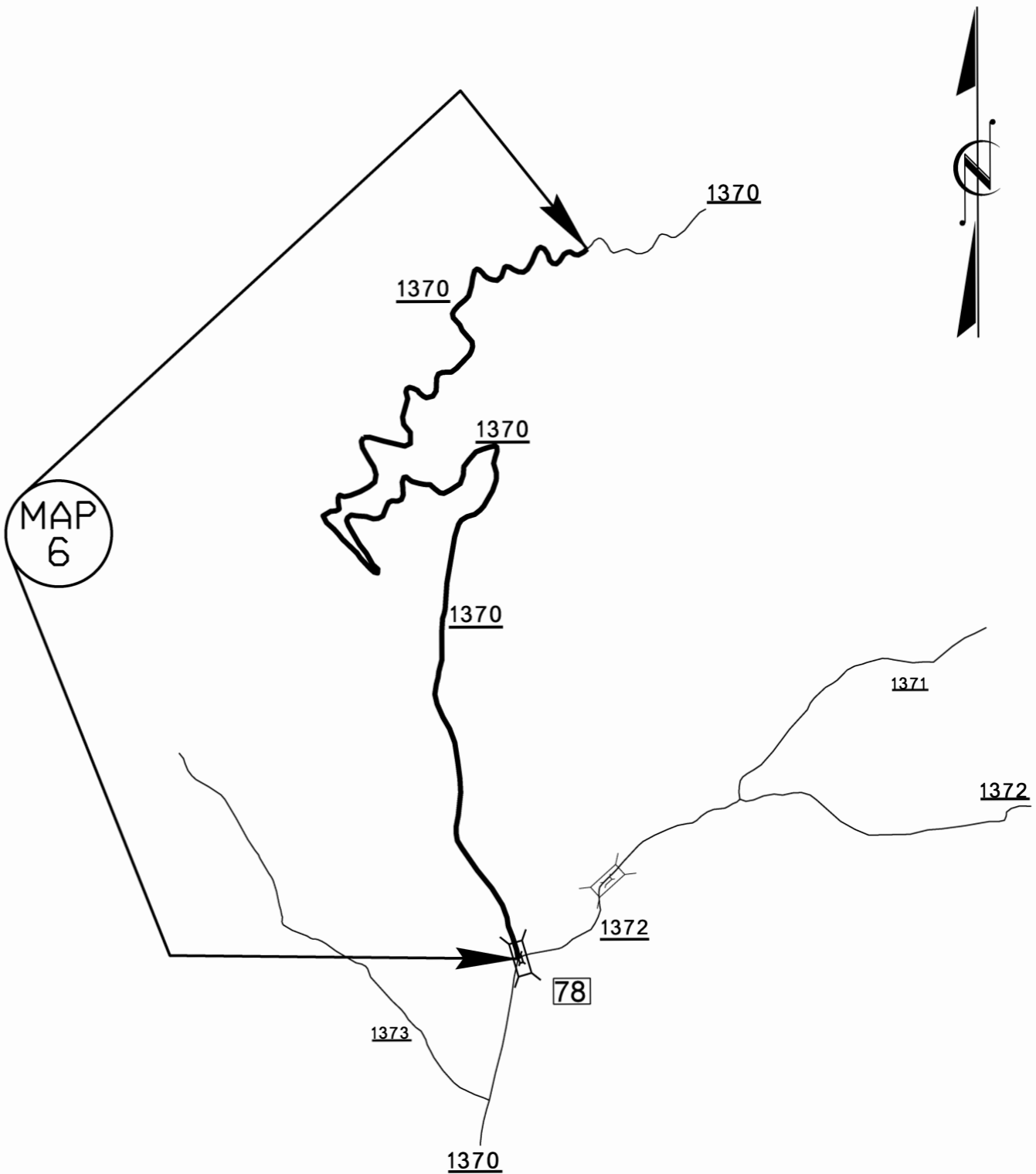
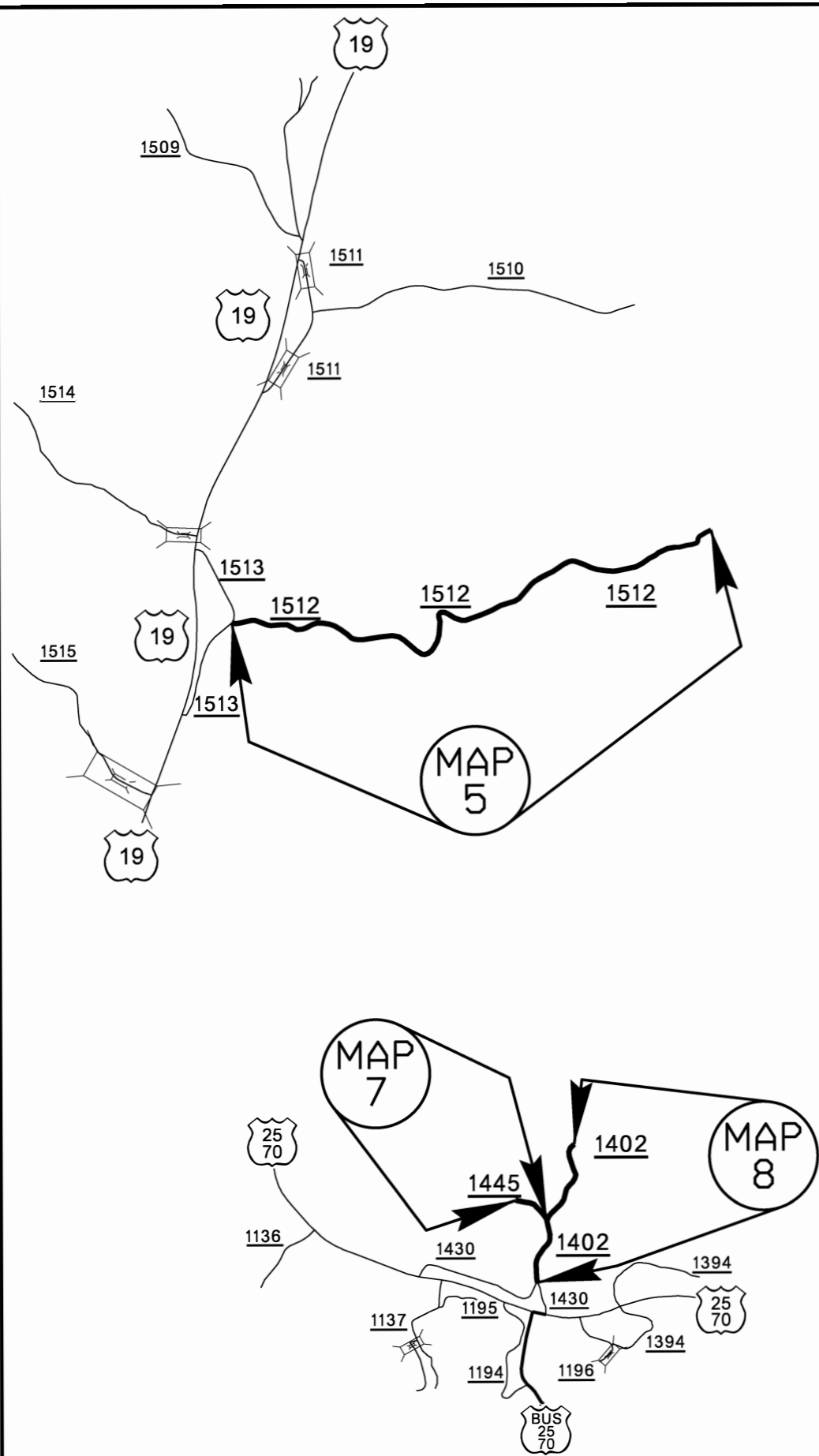


PROJECT NO.	SHEET NO.	TOTAL SHEETS
2022CPT.13.03.20572	1	10

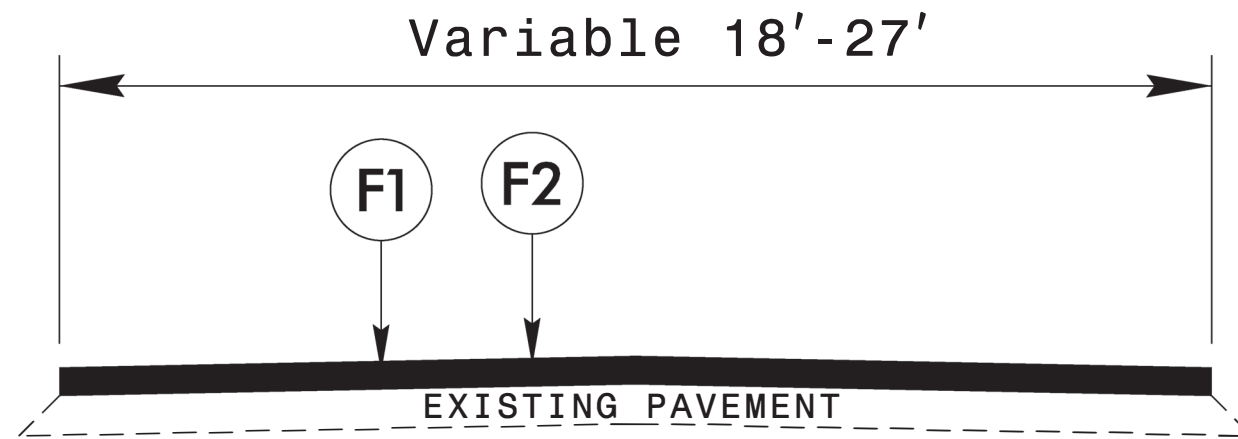


MADISON COUNTY

PROJECT NO.	SHEET NO.	TOTAL SHEETS
2022CPT.13.03.20572	2	10

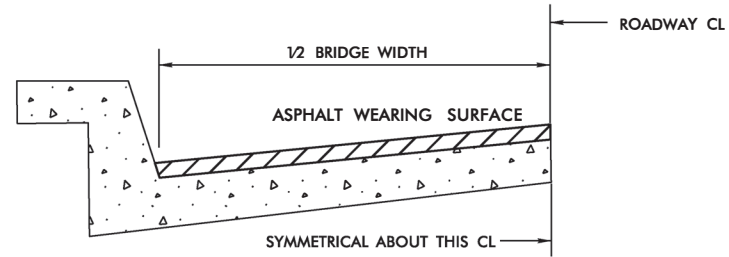


MADISON COUNTY



TYPICAL SECTION #1

PAVEMENT SCHEDULE	
F1	ASPHALT SURFACE TREATMENT, DOUBLE SEAL
F2	ASPHALT SURFACE TREATMENT, FOG SEAL



BRIDGE HALF TYPICAL SECTION

FOR BRIDGES WITH FLOOR DRAINS, CARE SHALL BE EXERCISED IN PLACING THE WEARING SURFACE AROUND FLOOR DRAINS SO AS NOT TO HINDER EFFECTIVE DRAINAGE. ALL DRAINS SHALL BE LEFT OPEN.

THE PROPOSED WEARING SURFACE SHALL VARY IN THICKNESS AS NECESSARY TO PROVIDE A SMOOTH RIDING SURFACE. THE MINIMUM THICKNESS SHOULD DEPEND ON PAVEMENT TYPE AS FOLLOWS: S4.75A 1/2", S9.5B 1", S9.5C,D 1.5" - 2". ULTRA-THIN HOT MIX ASPHALT - TYPE A 3/4". ULTRA-THIN HOT MIX ASPHALT - TYPE B 5/8". ULTRA-THIN HOT MIX ASPHALT - TYPE C 1/2". THE MAXIMUM THICKNESS SHOULD DEPEND ON PAVEMENT TYPE AS FOLLOWS: S4.75A 1", S9.5B 1.5", S9.5C,D 2". ULTRA-THIN HOT MIX ASPHALT - TYPE A 3/4", ULTRA-THIN HOT MIX ASPHALT - TYPE B 5/8", ULTRA-THIN HOT MIX ASPHALT - TYPE C 1/2".

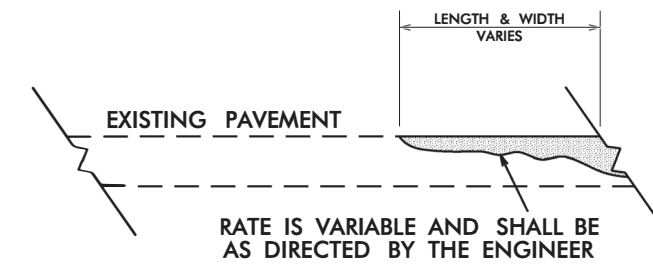
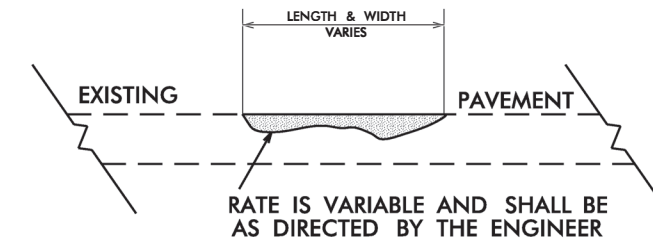
NOTES

ALL UNPAVED ROADS TO BE RESURFACED 50' FROM EDGE OF PAVEMENT OF MAIN PROJECT. ALL PAVED S. R. ROADS TO BE RESURFACED TO THE ENDS OF THE RADII, OR AS DIRECTED BY THE ENGINEER.

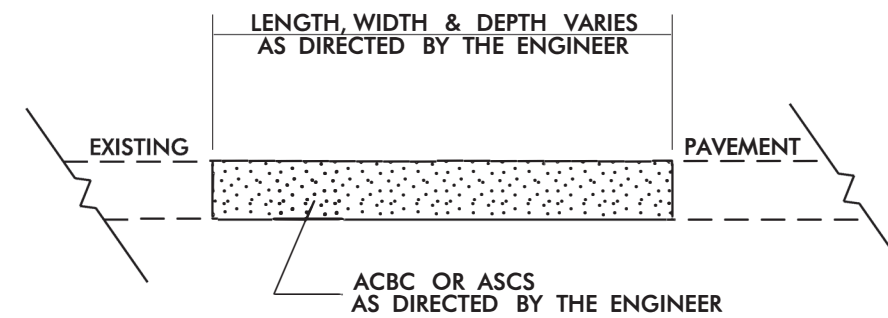
EDGES, PAVEMENT WIDENING, INTERSECTIONS AND BRIDGE FLARES ARE INCLUDED IN THE TABLE OF QUANTITIES.

SHOULDERS AND DITCHES ARE TO BE CONSTRUCTED BY OTHERS UNLESS OTHERWISE INDICATED.

BRIDGES ARE TO BE RESURFACED AT LOCATIONS AND TO DEPTH AS DIRECTED BY THE ENGINEER.



DETAIL SHOWING METHOD OF WEDGING



PATCHING EXISTING PAVEMENT

6/2/09
 27-JAN-2021 13:38
 S:\DDC\Resurfacing\2022 Resurfacing\Madison (PP)\Typicals\Madison_Resurfacing_Typicals_DDC.dgn
 \$\$\$USERNAME\$\$\$

PROJECT NO.	SHEET NO.	TOTAL NO.
2022CPT.13.03.20572	5	10

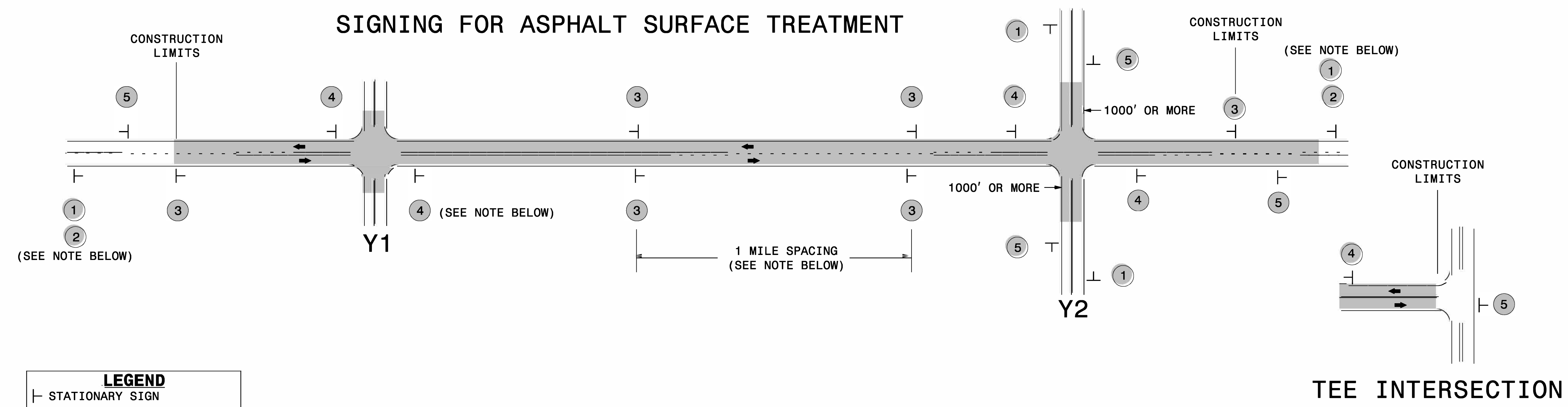
SUMMARY OF QUANTITIES

PROJECT NO	COUNTY	MAP NO	ROUTE	DESCRIPTION	TYP NO	LANES	LANE TYPE	FINAL SURFACE TESTING REQUIRED	WARM MIX ASPHALT REQUIRED	LENGTH	WIDTH	1498000000-E	1575000000-E	1704000000-E	1803500000-E	1820000000-E	1838000000-E	1818500000-N
												ASPHALT CONC INTERMEDIATE COURSE, TYPE I19.0B	ASPHALT BINDER FOR PLANT MIX	PATCHING EXISTING PAVEMENT	ASPHALT SURFACE TREATMENT, DOUBLE SEAL	ASPHALT SURFACE TREATMENT, FOG SEAL	EMULSION FOR ASPHALT SURFACE TREATMENT	VACUUM TRUCK
												MI	FT	TON	TON	TON	SY	SY
2022CPT.13.05.20572	Madison	1	SR 1641	FROM US 19 (PAVEMENT JOINT) TO EOP	1	2	2WU	NO	NO	0.27	27				4,277	4,277	2,352	4
2022CPT.13.05.20572	Madison	2	SR 1564	FROM SR 1639 TO EOP	1	2	2WU	NO	NO	0.09	18			15	950	950	523	
2022CPT.13.05.20572	Madison	3	SR 1639	FROM SR 1559 TO BCL	1	2	2WU	NO	NO	0.52	19			50	5,796	5,796	3,188	
2022CPT.13.05.20572	Madison	4	SR 1507	FROM SR 1509 TO US 19 PVT JOINT	1	2	2WU	NO	NO	2.4	19			200	26,752	26,752	14,714	
2022CPT.13.05.20572	Madison	5	SR 1512	FROM SR 1513 (RUTH CIRCLE) TO EOP	1	2	2WU	NO	NO	0.97	19	200	10	200	10,812	10,812	5,947	
2022CPT.13.05.20572	Madison	6	SR 1370	FROM SR 1372 (ARRINGTON BRANCH) TO PVT CHG AT MP 6.88	1	2	2WU	NO	NO	2.43	18			230	25,661	25,661	14,113	
2022CPT.13.05.20572	Madison	7	SR 1445	FROM SR 1402 - BIG BRANCH RD. TO EOP	1	2	2WU	NO	NO	0.11	18			90	1,162	1,162	639	
2022CPT.13.05.20572	Madison	8	SR 1402	FROM SR 1430 (DAVIS CHAPEL RD.) TO EOP	1	2	2WU	NO	NO	0.46	19			105	5,127	5,127	2,820	
TOTAL FOR PROJ NO. 2022CPT.13.05.20572										7.25		200	10	890	80,537	80,537	44,296	4
GRAND TOTAL										7.25		200	10	890	80,537	80,537	44,296	4

PROJECT NO.	SHEET NO.	TOTAL NO.
2022CPT.13.03.20572	6	10

THERMOPLASTIC AND PAINT QUANTITIES

PROJECT NO	COUNTY	MAP NO	ROUTE	DESCRIPTION	TYP NO	LANES	LANE TYPE	LENGTH	WIDTH	4413000000-E	4457000000-N	4810000000-E		4890000000-E	4895000000-N		
										WORK ZONE ADVANCE/GENERAL WARNING SIGNING	TEMPORARY TRAFFIC CONTROL	PAINT PAVEMENT MARKING LINES (4") WHITE	PAINT PAVEMENT MARKING LINES (4") YELLOW	THERMOPLAS TIC PAVEMENT MARKING LINES (24", 90 MILS) WHITE	NON-CAST IRON SNOWPLOWA BLE PAVMENT MARKERS		
										MI	FT	SF	LS	LF	LF	LF	EA
2022CPT.13.05.20572	Madison	1	SR 1641	FROM US 19 (PAVEMENT JOINT) TO EOP	1	2	2WU	0.27	27	812	*	2,855	2,855				
2022CPT.13.05.20572	Madison	2	SR 1564	FROM SR 1639 TO EOP	1	2	2WU	0.09	18			955	955				
2022CPT.13.05.20572	Madison	3	SR 1639	FROM SR 1559 TO BCL	1	2	2WU	0.52	19			5,495	5,495				
2022CPT.13.05.20572	Madison	4	SR 1507	FROM SR 1509 TO US 19 PVT JOINT	1	2	2WU	2.4	19			25,344	25,344	16	8		
2022CPT.13.05.20572	Madison	5	SR 1512	FROM SR 1513 (RUTH CIRCLE) TO EOP	1	2	2WU	0.97	19			10,245	10,245				
2022CPT.13.05.20572	Madison	6	SR 1370	FROM SR 1372 (ARRINGTON BRANCH) TO PVT CHG AT MP 6.88	1	2	2WU	2.43	18			10,985	10,985				
2022CPT.13.05.20572	Madison	7	SR 1445	FROM SR 1402 - BIG BRANCH RD. TO EOP	1	2	2WU	0.11	18			1,165	1,165				
2022CPT.13.05.20572	Madison	8	SR 1402	FROM SR 1430 (DAVIS CHAPEL RD.) TO EOP	1	2	2WU	0.46	19			4,860	4,860				
TOTAL FOR PROJ NO. 2022CPT.13.05.20572								7.25		812	*	61,904	61,904	16	8		
												123,808					
GRAND TOTAL								7.25		812	1	61,904	61,904	16	8		
												123,808					



MAINLINE (-L-) SIGNING

-Y- LINE SIGNING

SIGNING NOTES AND PLACEMENT PER DIRECTION	1	 <small>W20-1 48" X 48"</small>	PLACE 1000' PRIOR TO BEGINNING OF CONSTRUCTION LIMITS. ONLY USED ON -Y- LINES IF RESURFACING LIMITS EXTEND 1000' ALONG -Y- LINE.	<p style="text-align: center;">NO REQUIRED STATIONARY SIGNING FOR THE FOLLOWING -Y- LINE CONDITIONS:</p> <ol style="list-style-type: none"> 1) LESS THAN 1000' OF RESURFACING ALONG -Y- LINE 2) SUBDIVISION ROADS 3) DEAD END ROADS <p style="text-align: center;">WHEN PAVING/CONSTRUCTION ACTIVITIES PROCEED ACROSS AN UNSIGNED -Y- LINE, ADVANCE WARNING PORTABLE SIGNS SHALL BE USED ALONG THE -Y- LINE AS SHOWN BELOW. REMOVE UPON COMPLETION OF WORK.</p> <div style="display: flex; justify-content: space-around; align-items: center;"> <div style="text-align: center;"> <small>W20-1 48" X 48"</small> </div> <div style="text-align: center;"> <small>W20-7 A 48" X 48"</small> </div> </div> <p style="text-align: center;">PLACED 500' IN ADVANCE OF FLAGGER. PLACED 250' IN ADVANCE OF FLAGGER.</p>
	2	 <small>W7-3aP 24" X 18"</small>	#2 SIGN ONLY USED WHEN RESURFACING LIMITS ARE 2 OR MORE MILES IN LENGTH. ROUND UP TO NEXT WHOLE NUMBER. (NO FRACTIONAL OR DECIMAL NUMBERS)	
	3	 <small>W8-7 48" X 48"</small> <small>SP 48" X 48"</small>	<ul style="list-style-type: none"> - ALTERNATE THE FOLLOWING TWO SIGNS: - STARTING WITH "LOOSE GRAVEL" (W8-7) FOLLOWED BY "UNMARKED PAVEMENT". - PLACE INITIALLY AT THE CONSTRUCTION LIMITS AND SPACED 1 MILE APART THEREAFTER. - AT TEE INTERSECTIONS INSTALL INITIALLY 0.5 MILE FROM INTERSECTION AND SPACE 1 MILE APART THEREAFTER. 	
	4	 <small>SP 13106 48" X 48"</small>	<ul style="list-style-type: none"> - THESE ARE FOR -Y- LINES THAT ARE "THROUGH" ROADWAYS. - DEAD END AND SUBDIVISION ROADS ARE NOT "THROUGH" ROADWAYS. - INSTALL 500' +/- FROM EACH -Y- LINE APPROACH AS SHOWN ABOVE. - FOR MULTIPLE -Y- LINES THAT ARE SEPARATED BY 0.25 MILES OR LESS, TREAT AS A SINGLE UNIT AND INSTALL WITHIN 500' OF EACH APPROACH. - A MAXIMUM OF 2 SIGN SETS PER MILE. DO NOT INSTALL WHEN -Y- LINES ARE WITHIN 0.5 MILES FROM "END ROAD WORK" SIGN. - FOR TEE INTERSECTIONS, INSTALL WITHIN 500' +/- OF THE INTERSECTION ALONG -L- LINE. 	
	5	 <small>G20-2 A 48" X 24"</small>	PLACE 500' FOLLOWING THE END OF CONSTRUCTION LIMITS OR AS SHOWN WHEN WORK ENDS AT A 3-WAY TEE INTERSECTION.	

DIVISION OF HIGHWAYS
STATE OF NORTH CAROLINA
DEPARTMENT OF TRANSPORTATION
WORK ZONE TRAFFIC CONTROL

**ADVANCE WARNING SIGNS
FOR
ASPHALT SURFACE TREATMENTS
2 LANE ROADWAYS**

SIGN NUMBER: SP13106
 TYPE: STATIONARY
 QUANTITY: SEE PLANS

BACKG COLOR: Fluorescent Orange
 COPY COLOR: Black

DESIGN BY: B. RASHID
 PROJECT ID:

CHECKED BY: AIA
 DIV:

DATE: Apr 26, 2013

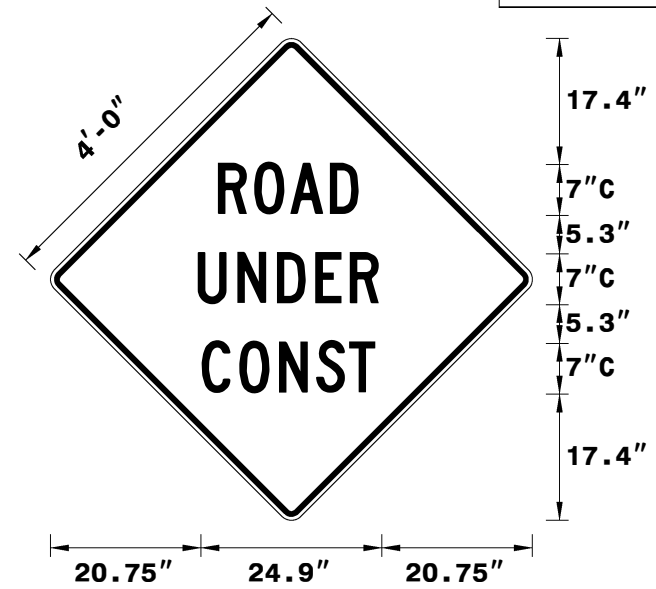
SYMBOL	X	Y	WID	HT

MAT'L: 0.080" (2.0 mm) ALUMINUM

BORDER TYPE: INSET
 RECESS: 0.75"
 WIDTH: 1.25"
 RADII: 3"

NO. Z BARS:
 LENGTH:

PROJECT NO.	SHEET NO.	TOTAL NO.
2022CPT.13.03.20572	9	10



Spacing Factor is 1 unless specified otherwise

USE NOTES: 1,2

- Legend and border shall be direct applied black non-reflective sheeting.
- Background shall be NC GRADE B fluorescent orange retroreflective sheeting.

LETTER POSITIONS

Letter spacings are to start of next letter

Letter spacings are to start of next letter																		Series/Size Text Length
		R	O	A	D													C 2000
	23.5	5	5	5.5	3.9	23.5												19.3
		U	N	D	E	R												C 2000
	20.7	5.5	5.5	5.3	4.8	3.9	20.7											24.9
		C	O	N	S	T												C 2000
	21.2	5.2	5.5	5.1	4.6	3.6	21.2											23.9

