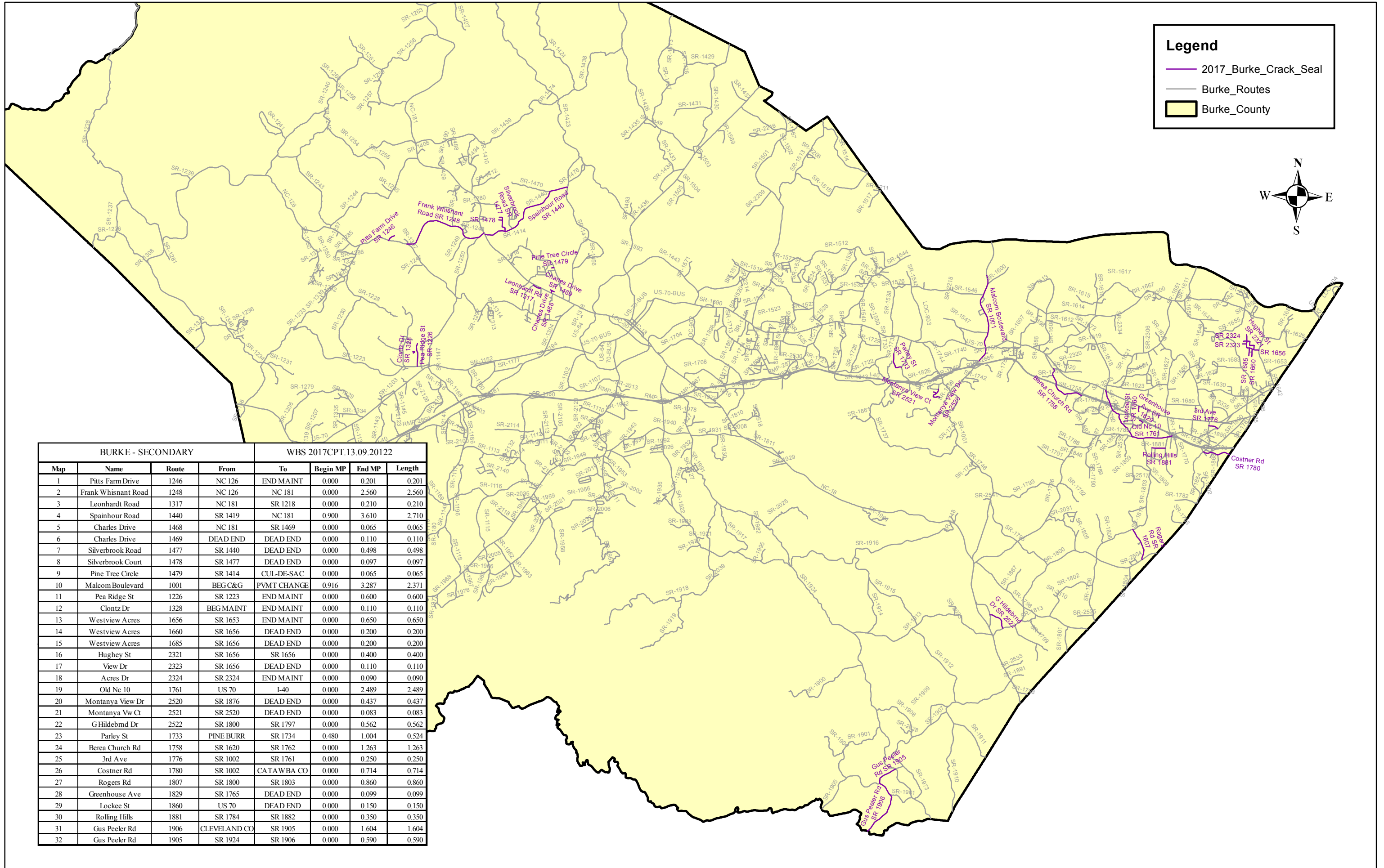
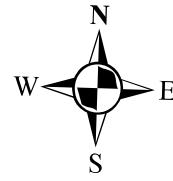


2017 Burke County Crack Seal



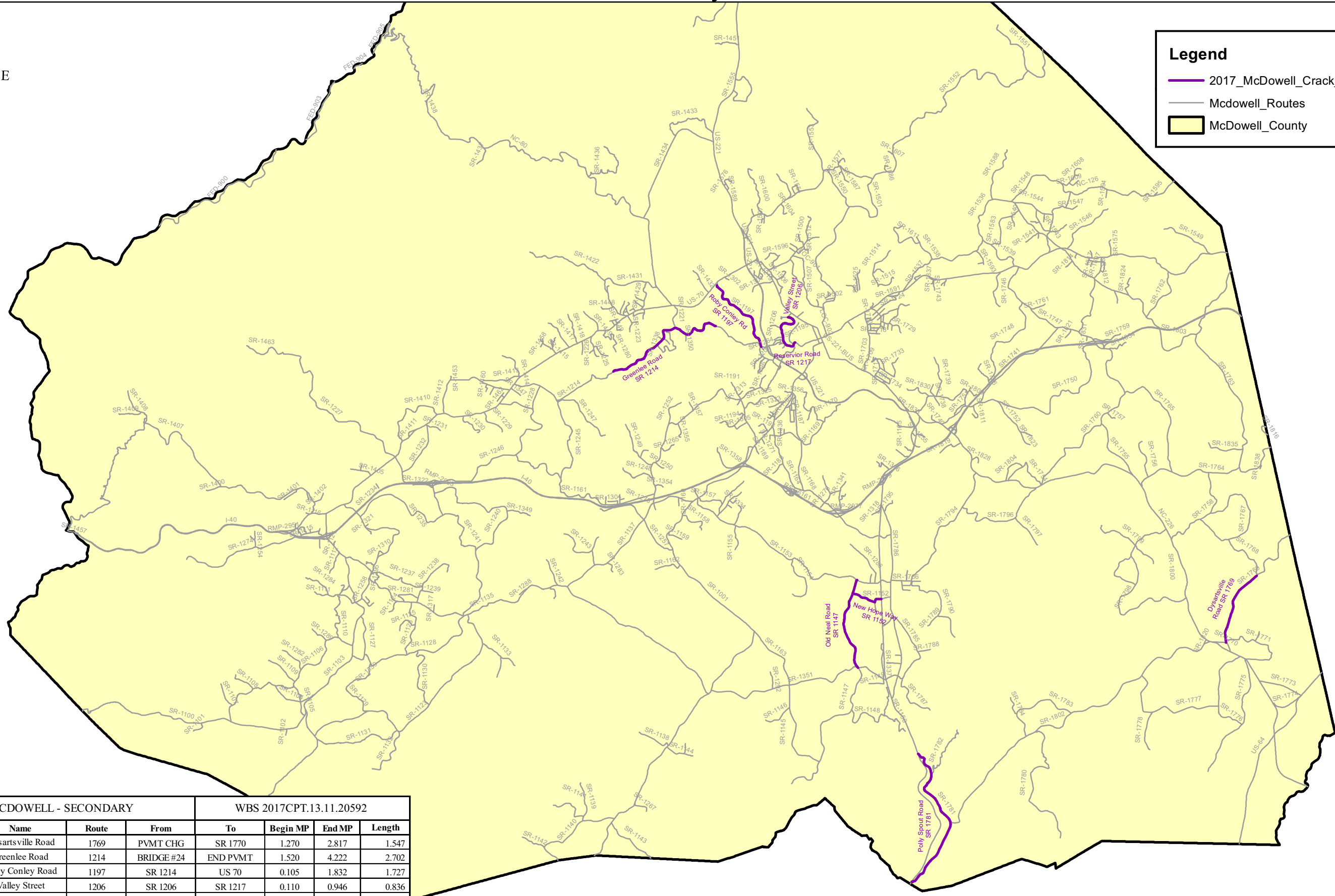
BURKE - SECONDARY			WBS 2017CPT.13.09.20122				
Map	Name	Route	From	To	Begin MP	End MP	Length
1	Pitts Farm Drive	1246	NC 126	END MAINT	0.000	0.201	0.201
2	Frank Whisnant Road	1248	NC 126	NC 181	0.000	2.560	2.560
3	Leonhardt Road	1317	NC 181	SR 1218	0.000	0.210	0.210
4	Spainhour Road	1440	SR 1419	NC 181	0.900	3.610	2.710
5	Charles Drive	1468	NC 181	SR 1469	0.000	0.065	0.065
6	Charles Drive	1469	DEAD END	DEAD END	0.000	0.110	0.110
7	Silverbrook Road	1477	SR 1440	DEAD END	0.000	0.498	0.498
8	Silverbrook Court	1478	SR 1477	DEAD END	0.000	0.097	0.097
9	Pine Tree Circle	1479	SR 1414	CUL-DE-SAC	0.000	0.065	0.065
10	Malcom Boulevard	1001	BEG C&G	PVMT CHANGE	0.916	3.287	2.371
11	Pea Ridge St	1226	SR 1223	END MAINT	0.000	0.600	0.600
12	Clontz Dr	1328	BEG MAINT	END MAINT	0.000	0.110	0.110
13	Westview Acres	1656	SR 1653	END MAINT	0.000	0.650	0.650
14	Westview Acres	1660	SR 1656	DEAD END	0.000	0.200	0.200
15	Westview Acres	1685	SR 1656	DEAD END	0.000	0.200	0.200
16	Hughey St	2321	SR 1656	SR 1656	0.000	0.400	0.400
17	View Dr	2323	SR 1656	DEAD END	0.000	0.110	0.110
18	Acres Dr	2324	SR 2324	END MAINT	0.000	0.090	0.090
19	Old Nc 10	1761	US 70	I-40	0.000	2.489	2.489
20	Montanya View Dr	2520	SR 1876	DEAD END	0.000	0.437	0.437
21	Montanya Vw Ct	2521	SR 2520	DEAD END	0.000	0.083	0.083
22	GHildebmd Dr	2522	SR 1800	SR 1797	0.000	0.562	0.562
23	Parley St	1733	PINE BURR	SR 1734	0.480	1.004	0.524
24	Berea Church Rd	1758	SR 1620	SR 1762	0.000	1.263	1.263
25	3rd Ave	1776	SR 1002	SR 1761	0.000	0.250	0.250
26	Costner Rd	1780	SR 1002	CATAWBA CO	0.000	0.714	0.714
27	Rogers Rd	1807	SR 1800	SR 1803	0.000	0.860	0.860
28	Greenhouse Ave	1829	SR 1765	DEAD END	0.000	0.099	0.099
29	Lockee St	1860	US 70	DEAD END	0.000	0.150	0.150
30	Rolling Hills	1881	SR 1784	SR 1882	0.000	0.350	0.350
31	Gus Peeler Rd	1906	CLEVELAND CO	SR 1905	0.000	1.604	1.604
32	Gus Peeler Rd	1905	SR 1924	SR 1906	0.000	0.590	0.590

2017 McDowell County Crack Seal



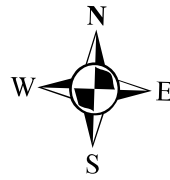
Legend

- 2017_McDowell_Crack_Seal
- McDowell_Routes
- McDowell_County



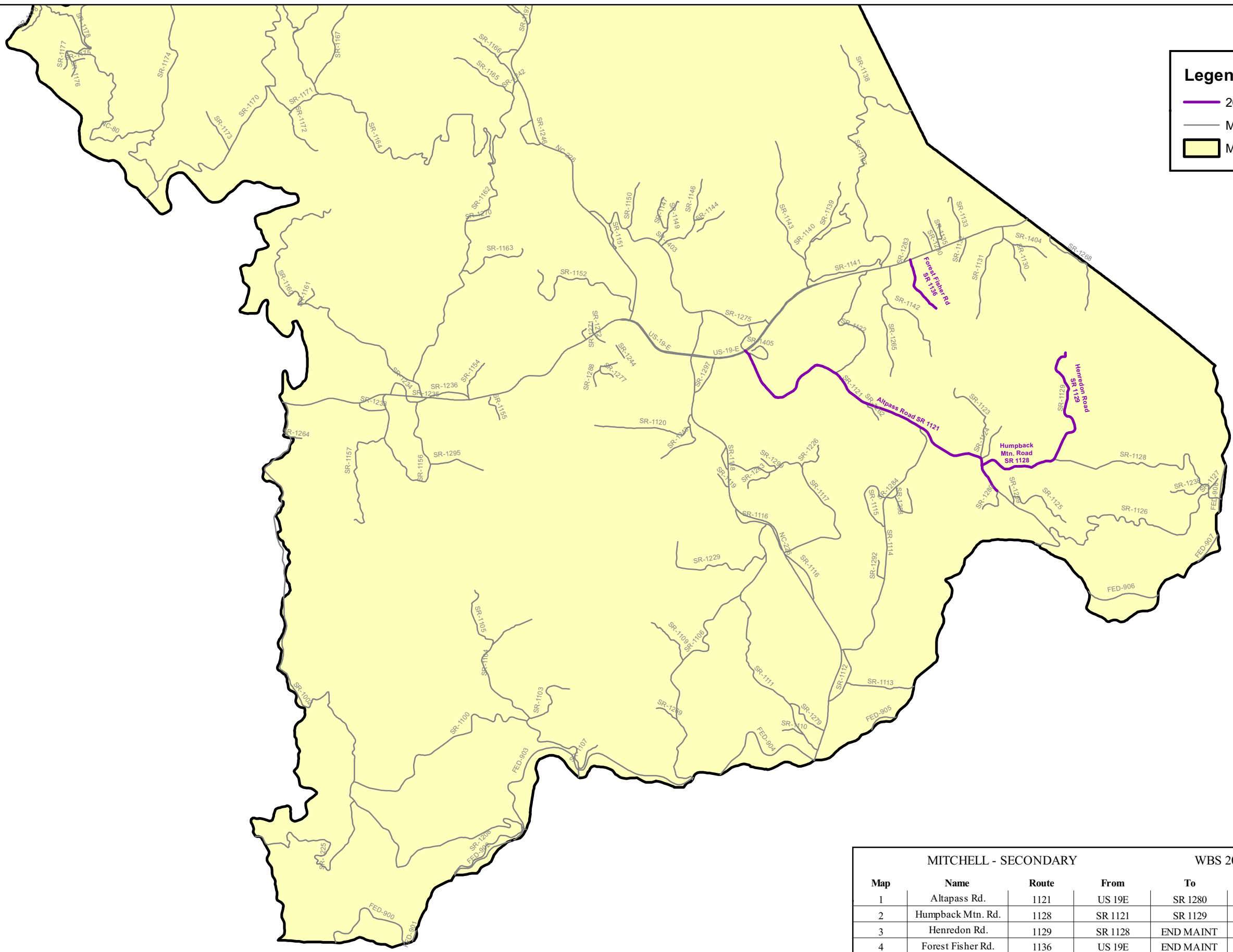
MCDOWELL - SECONDARY			WBS 2017CPT.13.11.20592				
Map	Name	Route	From	To	Begin MP	End MP	Length
1	Dysartsville Road	1769	PVMT CHG	SR 1770	1.270	2.817	1.547
2	Greenlee Road	1214	BRIDGE #24	END PVMT	1.520	4.222	2.702
3	Roby Conley Road	1197	SR 1214	US 70	0.105	1.832	1.727
4	Valley Street	1206	SR 1206	SR 1217	0.110	0.946	0.836
5	Reservoir Road	1217	SR 1195	SR 1206	0.000	0.271	0.271
6	New Hope Way	1152	US 221	SR 1147	0.187	0.839	0.652
7	Old Neal Road	1147	SR 1153	SR 1351	0.000	1.887	1.887
8	Polly Spout Road	1781	US 221	US 221	0.000	3.205	3.205

2017 Mitchell County Crack Seal



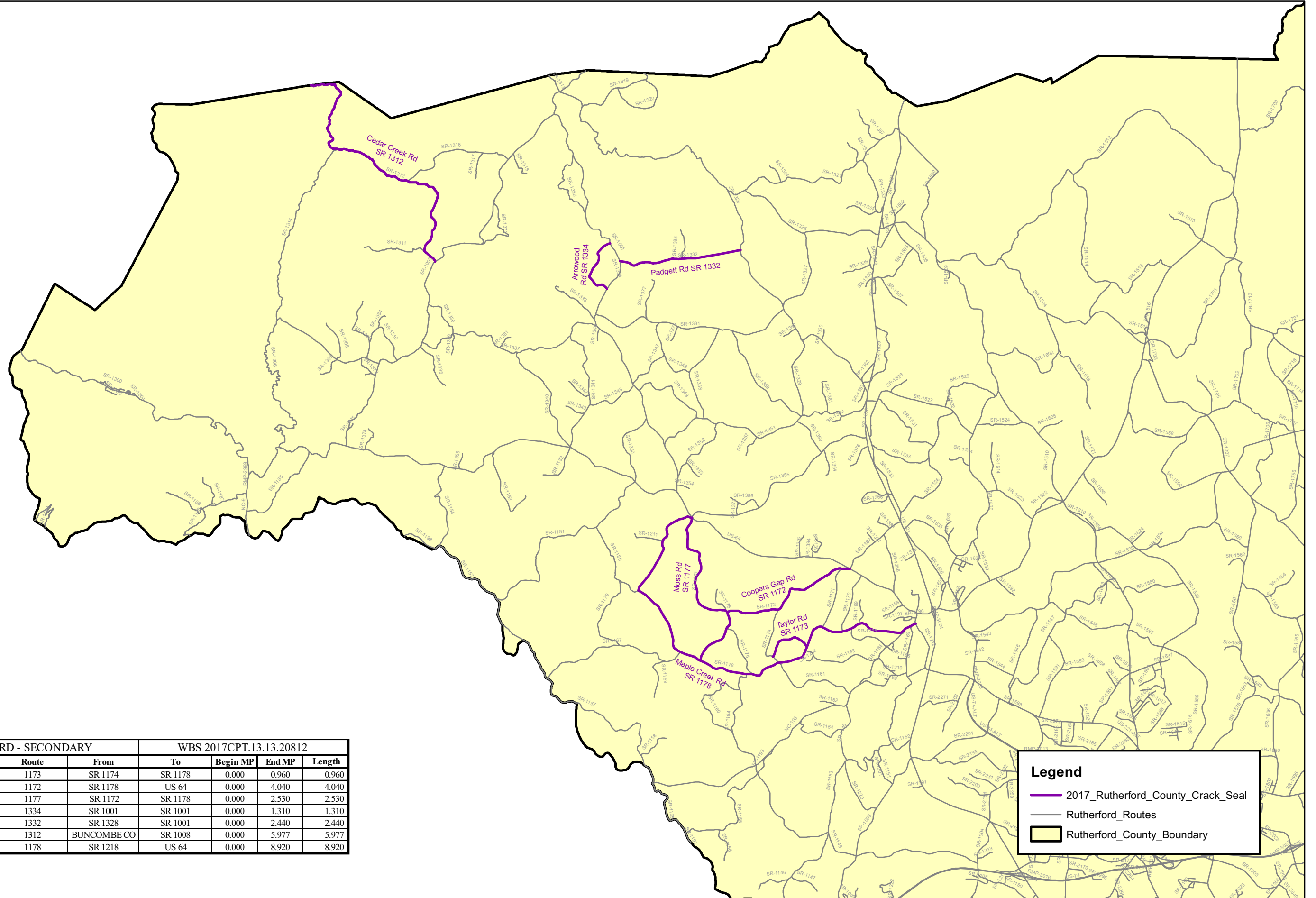
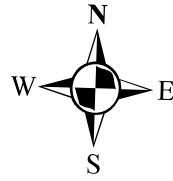
Legend

- 2017_Mitchell_Crack_Seal
- Mitchell_Routes
- Mitchell_County






MITCHELL - SECONDARY				WBS 2017CPT.13.12.20612			
Map	Name	Route	From	To	Begin MP	End MP	Length
1	Altapass Rd.	1121	US 19E	SR 1280	0.325	3.780	3.455
2	Humpback Mtn. Rd.	1128	SR 1121	SR 1129	2.030	2.820	0.790
3	Henredon Rd.	1129	SR 1128	END MAINT	0.000	1.300	1.300
4	Forest Fisher Rd.	1136	US 19E	END MAINT	0.000	0.590	0.590

2017 Rutherford County Crack Seal



RUTHERFORD - SECONDARY				WBS 2017CPT.13.13.20812			
Map	Name	Route	From	To	Begin MP	End MP	Length
1	Taylor	1173	SR 1174	SR 1178	0.000	0.960	0.960
2	Coopers Gap	1172	SR 1178	US 64	0.000	4.040	4.040
3	Moss	1177	SR 1172	SR 1178	0.000	2.530	2.530
4	Arrowwood	1334	SR 1001	SR 1001	0.000	1.310	1.310
5	Padgett	1332	SR 1328	SR 1001	0.000	2.440	2.440
6	Cedar Creek	1312	BUNCOMBE CO	SR 1008	0.000	5.977	5.977
7	Maple Creek	1178	SR 1218	US 64	0.000	8.920	8.920

Legend

-  2017_Rutherford_County_Crack_Seal
-  Rutherford_Routes
-  Rutherford_County_Boundary