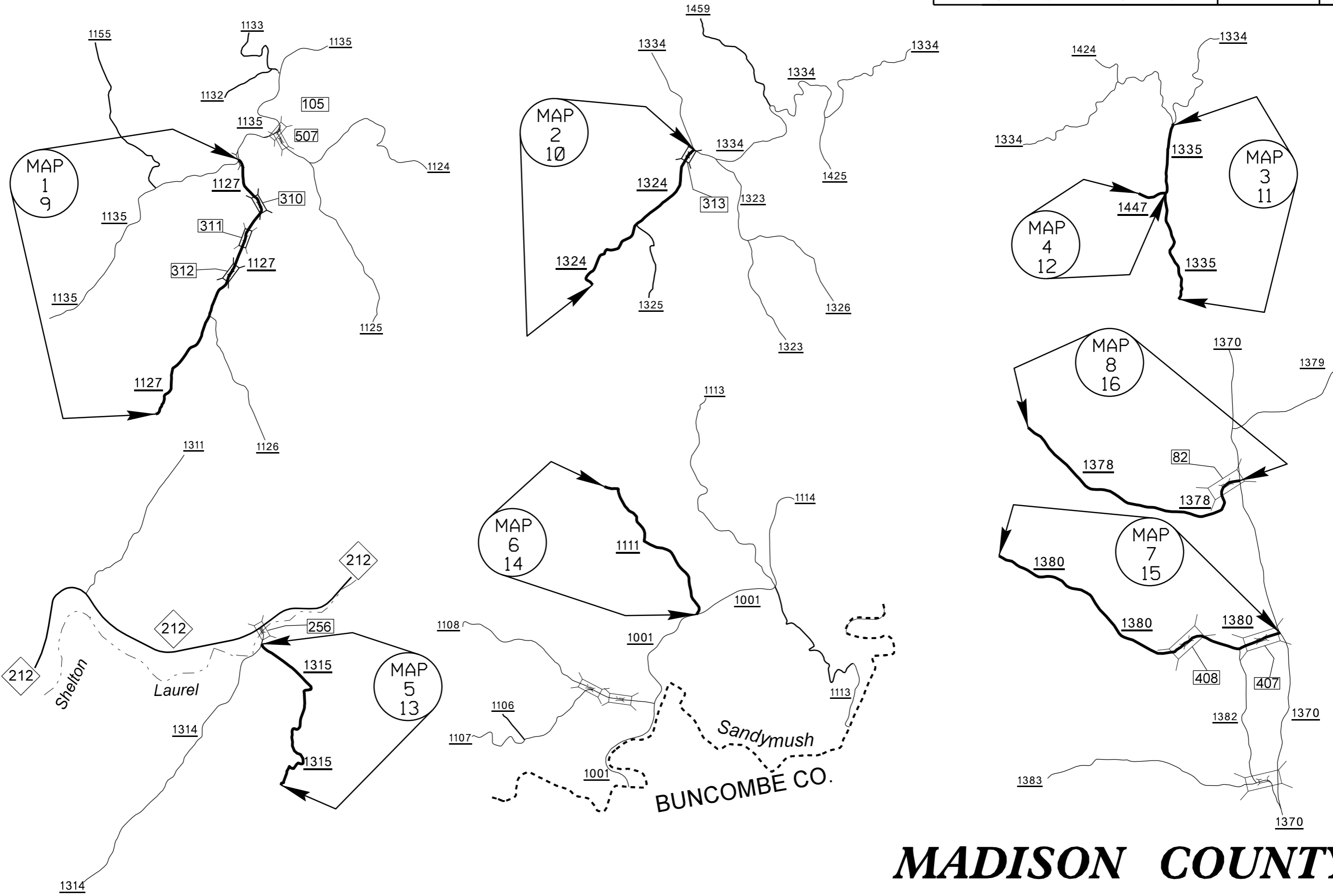


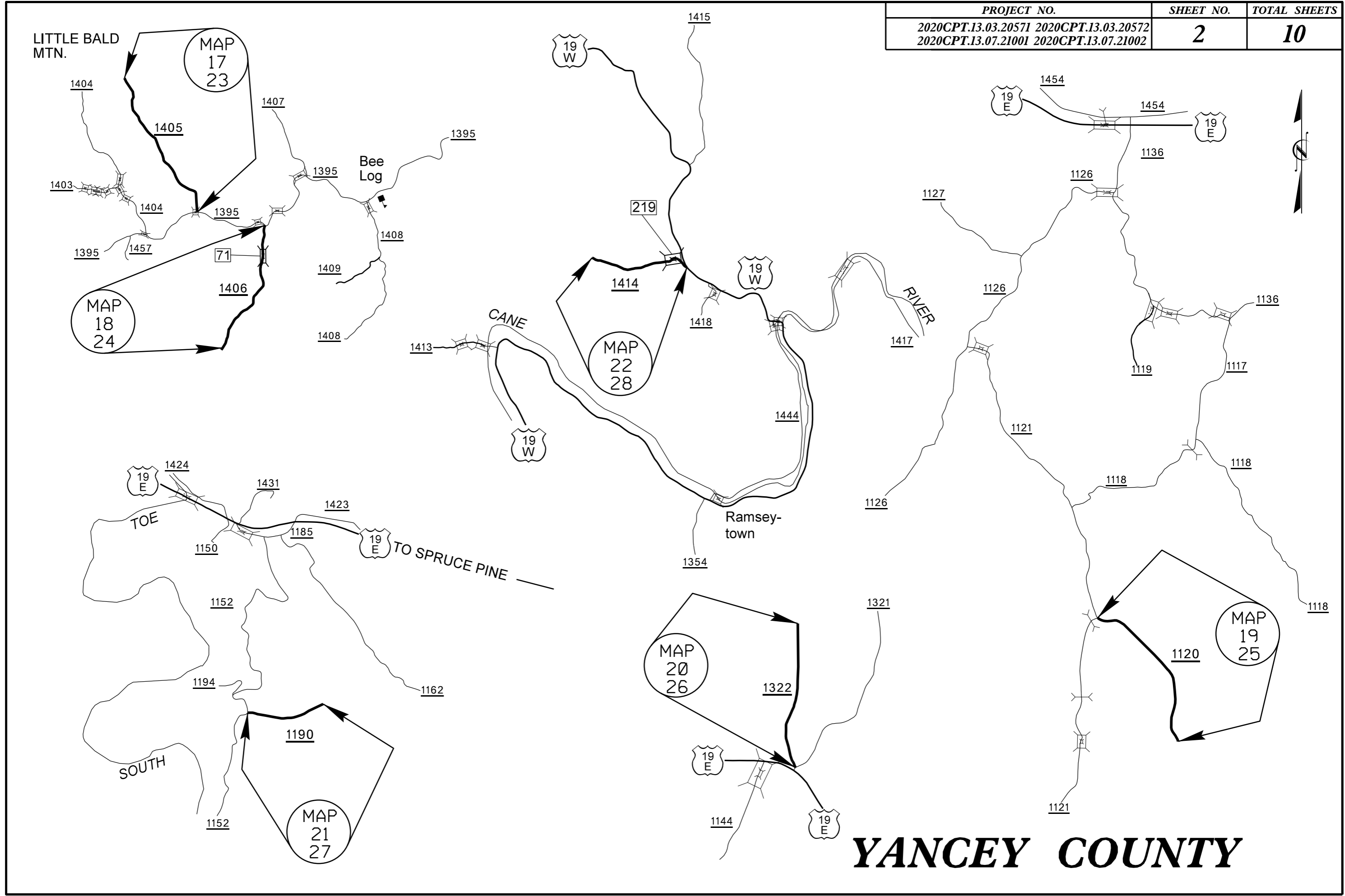
PROJECT NO.	SHEET NO.	TOTAL SHEETS
2020CPT.13.03.20571 2020CPT.13.03.20572 2020CPT.13.07.21001 2020CPT.13.07.21002	1	10



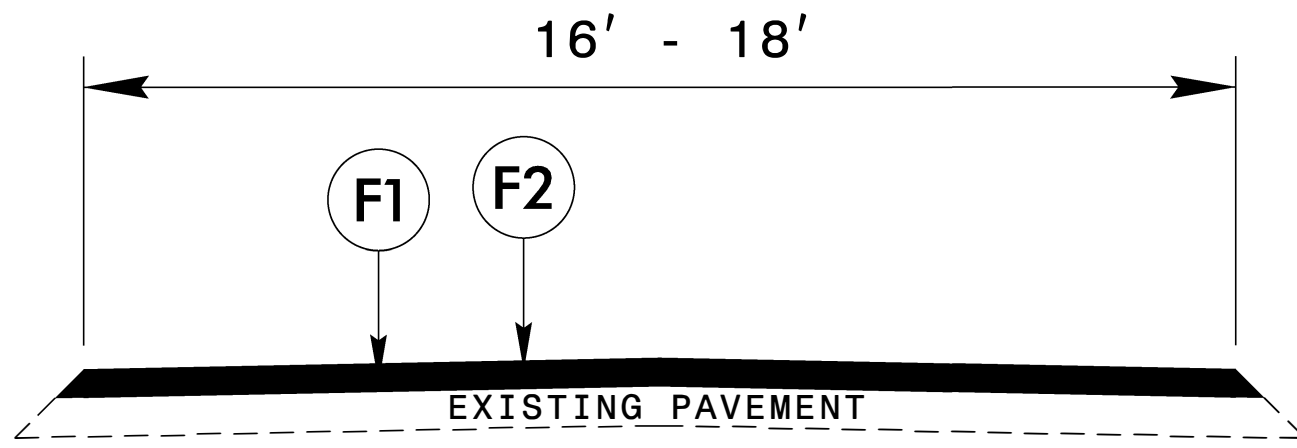
Sandymush
BUNCOMBE CO.

MADISON COUNTY

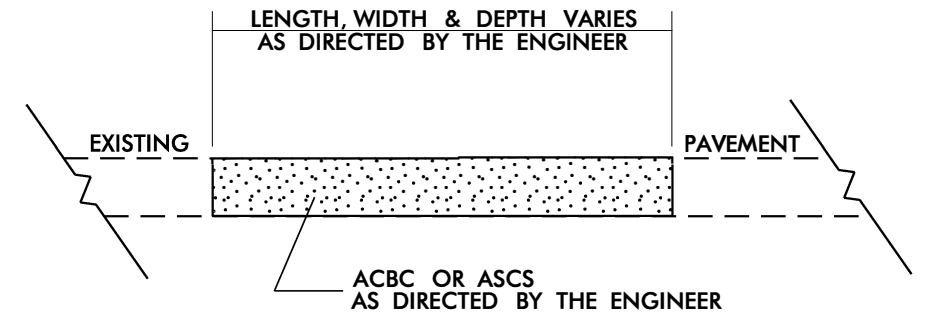
PROJECT NO.	SHEET NO.	TOTAL SHEETS
2020CPT.13.03.20571 2020CPT.13.03.20572 2020CPT.13.07.21001 2020CPT.13.07.21002	2	10



YANCEY COUNTY



TYPICAL SECTION #1



PATCHING EXISTING PAVEMENT

PAVEMENT SCHEDULE	
F1	PROPOSED ASPHAL SURFACE TREATMENT, DOUBLE SEAL
F2	PROPOSED ASPHALT SURFACE TREATMENT, FOG SEAL

6/2/99
 Q2-OCT-2018 09:24
 S:\Projects\Resurfacing\2020\Resurfacing\2020\Resurfacing\2020\Madison\Yancey_PP_TYP.dgn

PROJECT NO.	SHEET NO.	TOTAL NO.
2020CPT.13.03.20571, 2020CPT.13.03.20572 2020CPT.13.07.21001, 2020CPT.13.07.21002	4	10

SUMMARY OF QUANTITIES

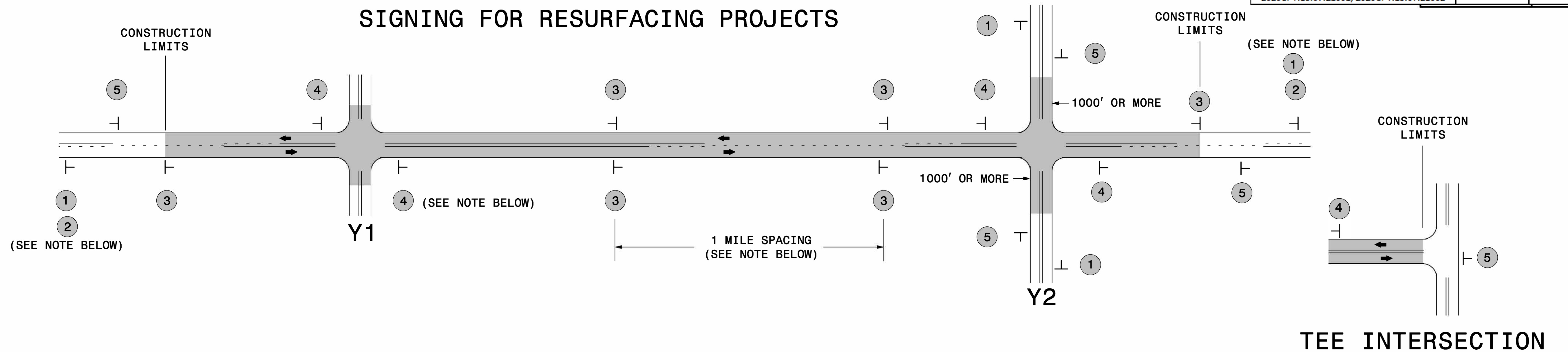
PROJECT NO	COUNTY	MAP NO	ROUTE	DESCRIPTION	TYP NO	LANES	LANE TYPE	FINAL SURFACE TESTING REQUIRED	WARM MIX ASPHALT REQUIRED	LENGTH	WIDTH	1704000000-E	1803500000-E	1820000000-E	1838000000-E	1838500000-N	
												PATCHING EXISTING PAVEMENT	ASPHALT SURFACE TREATMENT, DOUBLE SEAL	ASPHALT SURFACE TREATMENT, FOG SEAL	EMULSION FOR ASPHALT SURFACE TREATMENT	VACUUM TRUCK	
												TON	SY	SY	GAL	WK	
2020CPT.13.03.20571	Madison	1	SR 1127	FROM SR 1135 (LITTLE PINE) TO EOP (MP 0.00 - MP 1.98)		2	2WU	NO	NO	1.98	18	400					
2020CPT.13.03.20571	Madison	2	SR 1324	FROM SR 1334 (REVERE RD) TO EOP (MP 0.00 - MP 1.20)		2	2WU	NO	NO	1.2	18	400					
2020CPT.13.03.20571	Madison	3	SR 1335	FROM SR 1334 (REVERE RD) TO TO EOP (MP 0.00 - MP 0.96)		2	2WU	NO	NO	0.96	18	275					
2020CPT.13.03.20571	Madison	4	SR 1447	FROM SR 1335 (RICE COVE) TO EOP (MP 0.00 - MP 0.16)		2	2WU	NO	NO	0.16	16	30					
2020CPT.13.03.20571	Madison	5	SR 1315	FROM SR 1314 (CUTSHALL TOWN) TO EOP (MP 0.00 - MP 0.84)		2	2WU	NO	NO	0.84	18	450					
2020CPT.13.03.20571	Madison	6	SR1111	FROM SR 1001TO EOP (MP 0.00 - MP 0.89)		2	2WU	NO	NO	0.89	18	75					
2020CPT.13.03.20571	Madison	7	SR 1380	FROM SR 1370 (GRAPEVINE) TO EOP (MP 0.00 - MP 1.14)		2	2WU	NO	NO	1.14	18	200					
2020CPT.13.03.20571	Madison	8	SR 1378	FROM SR 1370 (GRAPEVINE) TO EOP (MP 0.00 TO 1.07)		2	2WU	NO	NO	1.07	18	200					
TOTAL FOR PROJ NO. 2020CPT.13.03.20571												8.24	2,030				
2020CPT.13.03.20572	Madison	9	SR 1127	FROM SR 1135 (LITTLE PINE) TO EOP (MP 0.00 - MP 1.98)	1	2	2WU	NO	NO	1.98	18		20,909	20,909	11,500	4.00	
2020CPT.13.03.20572	Madison	10	SR 1324	FROM SR 1334 (REVERE RD) TO EOP (MP 0.00 - MP 1.20)	1	2	2WU	NO	NO	1.2	18		12,672	12,672	6,970		
2020CPT.13.03.20572	Madison	11	SR 1335	FROM SR 1334 (REVERE RD) TO TO EOP (MP 0.00 - MP 0.96)	1	2	2WU	NO	NO	0.96	18		10,138	10,138	5,576		
2020CPT.13.03.20572	Madison	12	SR 1447	FROM SR 1335 (RICE COVE) TO EOP (MP 0.00 - MP 0.16)	1	2	2WU	NO	NO	0.16	16		1,502	1,502	826		
2020CPT.13.03.20572	Madison	13	SR 1315	FROM SR 1314 (CUTSHALL TOWN) TO EOP (MP 0.00 - MP 0.84)	1	2	2WU	NO	NO	0.84	18		8,870	8,870	4,879		
2020CPT.13.03.20572	Madison	14	SR1111	FROM SR 1001TO EOP (MP 0.00 - MP 0.89)	1	2	2WU	NO	NO	0.89	18		9,398	9,398	5,169		
2020CPT.13.03.20572	Madison	15	SR 1380	FROM SR 1370 (GRAPEVINE) TO EOP (MP 0.00 - MP 1.14)	1	2	2WU	NO	NO	1.14	18		12,038	12,038	6,621		
2020CPT.13.03.20572	Madison	16	SR 1378	FROM SR 1370 (GRAPEVINE) TO EOP (MP 0.00 TO 1.07)	1	2	2WU	NO	NO	1.07	18		11,299	11,299	6,215		
TOTAL FOR PROJ NO. 2020CPT.13.03.20572												8.24	86,826	86,826	47,756	4.00	
2020CPT.13.07.21001	Yancey	17	SR 1405	FROM SR 1395 (SCRONCE CR.) TO EOP (MP 0.00 - MP 1.13)		2	2WU	NO	NO	1.13	18	475					
2020CPT.13.07.21001	Yancey	18	SR 1406	FROM SR 1395 (SCRONCE CR) TO EOP (MP 0.00 - MP 1.28)		2	2WU	NO	NO	1.28	18	275					
2020CPT.13.07.21001	Yancey	19	SR 1120	FROM SR 1121 (PRICE CREEK) TO EOP (MP 0.00 - MP 0.94)		2	2WU	NO	NO	0.94	18	250					
2020CPT.13.07.21001	Yancey	20	SR 1322	FROM PVT JOINT TO EOP (MP 0.00 - MP 0.38)		2	2WU	NO	NO	0.38	18	180					
2020CPT.13.07.21001	Yancey	21	SR 1190	FROM SR 1152 (BLUE ROCK RD) TO EOP (MP 0.00 - MP 0.40)		2	2WU	NO	NO	0.4	18	125					
2020CPT.13.07.21001	Yancey	22	SR 1414	FROM US 19W TO EOP (MP 0.00 - MP 0.61)		2	2WU	NO	NO	0.61	17	300					
TOTAL FOR PROJ NO. 2020CPT.13.07.21001												4.74	1,605				
2020CPT.13.07.21002	Yancey	23	SR 1405	FROM SR 1395 (SCRONCE CR.) TO EOP (MP 0.00 - MP 1.13)	1	2	2WU	NO	NO	1.13	18		11,933	11,933	6,563	2.00	
2020CPT.13.07.21002	Yancey	24	SR 1406	FROM SR 1395 (SCRONCE CR) TO EOP (MP 0.00 - MP 1.28)	1	2	2WU	NO	NO	1.28	18		13,517	13,517	7,434		
2020CPT.13.07.21002	Yancey	25	SR 1120	FROM SR 1121 (PRICE CREEK) TO EOP (MP 0.00 - MP 0.94)	1	2	2WU	NO	NO	0.94	18		9,926	9,926	5,460		
2020CPT.13.07.21002	Yancey	26	SR 1322	FROM PVT JOINT TO EOP (MP 0.00 - MP 0.38)	1	2	2WU	NO	NO	0.38	18		4,013	4,013	2,207		
2020CPT.13.07.21002	Yancey	27	SR 1190	FROM SR 1152 (BLUE ROCK RD) TO EOP (MP 0.00 - MP 0.40)	1	2	2WU	NO	NO	0.4	18		4,224	4,224	2,323		
2020CPT.13.07.21002	Yancey	28	SR 1414	FROM US 19W TO EOP (MP 0.00 - MP 0.61)	1	2	2WU	NO	NO	0.61	17		6,084	6,084	3,346		
TOTAL FOR PROJ NO. 2020CPT.13.07.21002												4.74	49,697	49,697	27,333	2.00	
GRAND TOTAL										25.96		3,635	136,523	136,523	75,089	6.00	

PROJECT NO.	SHEET NO.	TOTAL NO.
2020CPT.13.03.20571, 2020CPT.13.03.20572 2020CPT.13.07.21001, 2020CPT.13.07.21002	5	10

THERMOPLASTIC AND PAINT QUANTITIES

PROJECT NO	COUNTY	MAP NO	ROUTE	DESCRIPTION	TYP NO	LANES	LANE TYPE	LENGTH		4413000000-E WORK ZONE ADVANCE/GENERAL WARNING SIGNING	4457000000-N TEMPORARY TRAFFIC CONTROL	4810000000-E PAINT PAVEMENT MARKING LINES (4") WHITE	4810000000-E PAINT PAVEMENT MARKING LINES (4") YELLOW		
								MI	FT					SF	LS
2020CPT.13.03.20571	Madison	1	SR 1127	FROM SR 1135 (LITTLE PINE) TO EOP (MP 0.00 - MP 1.98)		2	2WU	1.98	18	925	*				
2020CPT.13.03.20571	Madison	2	SR 1324	FROM SR 1334 (REVERE RD) TO EOP (MP 0.00 - MP 1.20)		2	2WU	1.2	18						
2020CPT.13.03.20571	Madison	3	SR 1335	FROM SR 1334 (REVERE RD) TO TO EOP (MP 0.00 - MP 0.96)		2	2WU	0.96	18						
2020CPT.13.03.20571	Madison	4	SR 1447	FROM SR 1335 (RICE COVE) TO EOP (MP 0.00 - MP 0.16)		2	2WU	0.16	16						
2020CPT.13.03.20571	Madison	5	SR 1315	FROM SR 1314 (CUTSHALL TOWN) TO EOP (MP 0.00 - MP 0.84)		2	2WU	0.84	18						
2020CPT.13.03.20571	Madison	6	SR1111	FROM SR 1001 TO EOP (MP 0.00 - MP 0.89)		2	2WU	0.89	18						
2020CPT.13.03.20571	Madison	7	SR 1380	FROM SR 1370 (GRAPEVINE) TO EOP (MP 0.00 - MP 1.14)		2	2WU	1.14	18						
2020CPT.13.03.20571	Madison	8	SR 1378	FROM SR 1370 (GRAPEVINE) TO EOP (MP 0.00 TO 1.07)		2	2WU	1.07	18						
TOTAL FOR PROJ NO. 2020CPT.13.03.20571								8.24		925	*				
2020CPT.13.03.20572	Madison	9	SR 1127	FROM SR 1135 (LITTLE PINE) TO EOP (MP 0.00 - MP 1.98)	1	2	2WU	1.98	18	925	*	41,818	41,818		
2020CPT.13.03.20572	Madison	10	SR 1324	FROM SR 1334 (REVERE RD) TO EOP (MP 0.00 - MP 1.20)	1	2	2WU	1.2	18					25,344	25,344
2020CPT.13.03.20572	Madison	11	SR 1335	FROM SR 1334 (REVERE RD) TO TO EOP (MP 0.00 - MP 0.96)	1	2	2WU	0.96	18					20,275	20,275
2020CPT.13.03.20572	Madison	12	SR 1447	FROM SR 1335 (RICE COVE) TO EOP (MP 0.00 - MP 0.16)	1	2	2WU	0.16	16						
2020CPT.13.03.20572	Madison	13	SR 1315	FROM SR 1314 (CUTSHALL TOWN) TO EOP (MP 0.00 - MP 0.84)	1	2	2WU	0.84	18						
2020CPT.13.03.20572	Madison	14	SR1111	FROM SR 1001 TO EOP (MP 0.00 - MP 0.89)	1	2	2WU	0.89	18						
2020CPT.13.03.20572	Madison	15	SR 1380	FROM SR 1370 (GRAPEVINE) TO EOP (MP 0.00 - MP 1.14)	1	2	2WU	1.14	18					24,077	24,077
2020CPT.13.03.20572	Madison	16	SR 1378	FROM SR 1370 (GRAPEVINE) TO EOP (MP 0.00 TO 1.07)	1	2	2WU	1.07	18					22,598	22,598
TOTAL FOR PROJ NO. 2020CPT.13.03.20572								8.24		*		134,112	134,112		
2020CPT.13.07.21001	Yancey	17	SR 1405	FROM SR 1395 (SCRONCE CR.) TO EOP (MP 0.00 - MP 1.13)		2	2WU	1.13	18	534	*				
2020CPT.13.07.21001	Yancey	18	SR 1406	FROM SR 1395 (SCRONCE CR.) TO EOP (MP 0.00 - MP 1.28)		2	2WU	1.28	18						
2020CPT.13.07.21001	Yancey	19	SR 1120	FROM SR 1121 (PRICE CREEK) TO EOP (MP 0.00 - MP 0.94)		2	2WU	0.94	18						
2020CPT.13.07.21001	Yancey	20	SR 1322	FROM PVT JOINT TO EOP (MP 0.00 - MP 0.38)		2	2WU	0.38	18						
2020CPT.13.07.21001	Yancey	21	SR 1190	FROM SR 1152 (BLUE ROCK RD) TO EOP (MP 0.00 - MP 0.40)		2	2WU	0.4	18						
2020CPT.13.07.21001	Yancey	22	SR 1414	FROM US 19W TO EOP (MP 0.00 - MP 0.61)		2	2WU	0.61	17						
TOTAL FOR PROJ NO. 2020CPT.13.07.21001								4.74		534					
2020CPT.13.07.21002	Yancey	23	SR 1405	FROM SR 1395 (SCRONCE CR.) TO EOP (MP 0.00 - MP 1.13)	1	2	2WU	1.13	18	534	*	23,866	23,866		
2020CPT.13.07.21002	Yancey	24	SR 1406	FROM SR 1395 (SCRONCE CR.) TO EOP (MP 0.00 - MP 1.28)	1	2	2WU	1.28	18					27,034	27,034
2020CPT.13.07.21002	Yancey	25	SR 1120	FROM SR 1121 (PRICE CREEK) TO EOP (MP 0.00 - MP 0.94)	1	2	2WU	0.94	18					9,926	9,926
2020CPT.13.07.21002	Yancey	26	SR 1322	FROM PVT JOINT TO EOP (MP 0.00 - MP 0.38)	1	2	2WU	0.38	18						
2020CPT.13.07.21002	Yancey	27	SR 1190	FROM SR 1152 (BLUE ROCK RD) TO EOP (MP 0.00 - MP 0.40)	1	2	2WU	0.4	18						
2020CPT.13.07.21002	Yancey	28	SR 1414	FROM US 19W TO EOP (MP 0.00 - MP 0.61)	1	2	2WU	0.61	17						
TOTAL FOR PROJ NO. 2020CPT.13.07.21002								4.74		1		60,826	60,826		
GRAND TOTAL								25.96		1,459	1	194,938	194,938		

SIGNING FOR RESURFACING PROJECTS



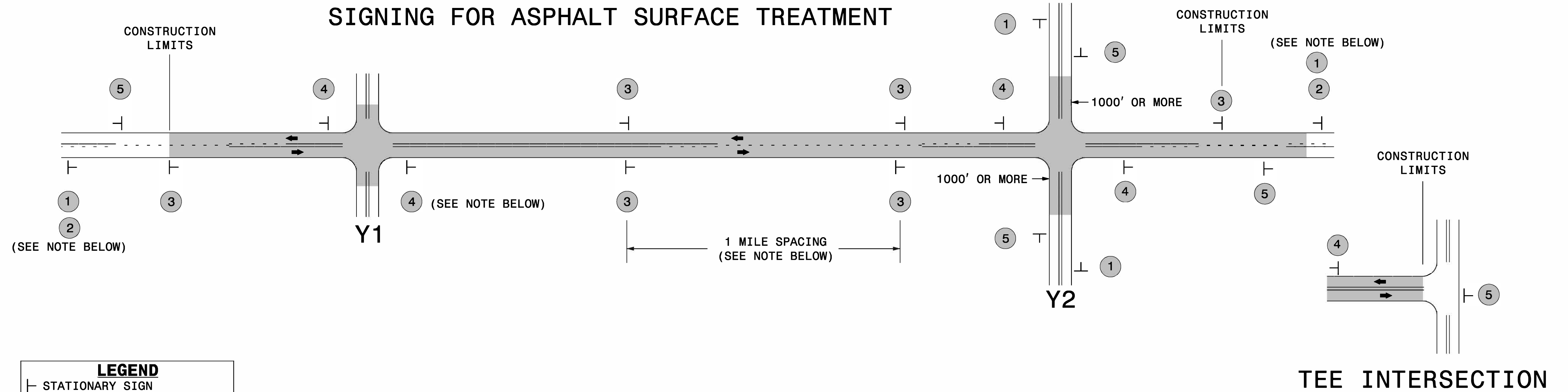
MAINLINE (-L-) SIGNING

-Y- LINE SIGNING

SIGNING NOTES AND PLACEMENT PER DIRECTION	1	 <small>W20-1 48" X 48"</small>	<p>PLACE 1000' PRIOR TO BEGINNING OF CONSTRUCTION LIMITS. ONLY USED ON -Y- LINES IF RESURFACING LIMITS EXTEND 1000' ALONG -Y- LINE.</p> <p>#2 SIGN ONLY USED WHEN RESURFACING LIMITS ARE 2 OR MORE MILES IN LENGTH. ROUND UP TO NEXT WHOLE NUMBER. (NO FRACTIONAL OR DECIMAL NUMBERS)</p>	<p>NO REQUIRED STATIONARY SIGNING FOR THE FOLLOWING -Y- LINE CONDITIONS:</p> <ol style="list-style-type: none"> 1) LESS THAN 1000' OF RESURFACING ALONG -Y- LINE 2) SUBDIVISION ROADS 3) DEAD END ROADS <p>WHEN PAVING/CONSTRUCTION ACTIVITIES PROCEED ACROSS AN UNSIGNED -Y- LINE, ADVANCE WARNING PORTABLE SIGNS SHALL BE USED ALONG THE -Y- LINE AS SHOWN BELOW. REMOVE UPON COMPLETION OF WORK.</p> <div style="display: flex; justify-content: space-around;"> <div style="text-align: center;"> <small>W20-1 48" X 48"</small> </div> <div style="text-align: center;"> <small>W20-7 A 48" X 48"</small> </div> </div> <p>PLACED 500' IN ADVANCE OF FLAGGER. PLACED 250' IN ADVANCE OF FLAGGER.</p>
	2	 <small>W7-3aP 24" X 18"</small>		
	3	 <small>SP 13107 48" X 48"</small>	<p>- PLACE INITIALLY AT THE CONSTRUCTION LIMITS AND SPACE 1 MILE APART THEREAFTER.</p> <p>- AT TEE INTERSECTIONS INSTALL INITIALLY 0.5 MILE FROM INTERSECTION AND SPACE 1 MILE APART THEREAFTER.</p>	
	4	 <small>SP 13106 48" X 48"</small>	<p>- THESE ARE FOR -Y- LINES THAT ARE "THROUGH" ROADWAYS. DEAD END AND SUBDIVISION ROADS ARE NOT "THROUGH" ROADWAYS.</p> <p>- INSTALL 500' +/- FROM EACH -Y- LINE APPROACH AS SHOWN ABOVE.</p> <p>- FOR MULTIPLE -Y- LINES THAT ARE SEPARATED BY 0.25 MILES OR LESS, TREAT AS A SINGLE UNIT AND INSTALL WITHIN 500' OF EACH APPROACH.</p> <p>- A MAXIMUM OF 2 SIGN SETS PER MILE. DO NOT INSTALL WHEN -Y- LINES ARE WITHIN 0.5 MILES FROM "END ROAD WORK" SIGN.</p> <p>- FOR TEE INTERSECTIONS, INSTALL WITHIN 500' +/- OF THE INTERSECTION ALONG -L- LINE.</p>	
	5	 <small>G20-2 A 48" X 24"</small>	<p>PLACE 500' FOLLOWING THE END OF CONSTRUCTION LIMITS OR AS SHOWN WHEN WORK ENDS AT A 3-WAY TEE INTERSECTION.</p>	



RESURFACING
ADVANCE WARNING SIGNS
FOR
RURAL AND SUBURBAN
2 LANE ROADWAYS



MAINLINE (-L-) SIGNING

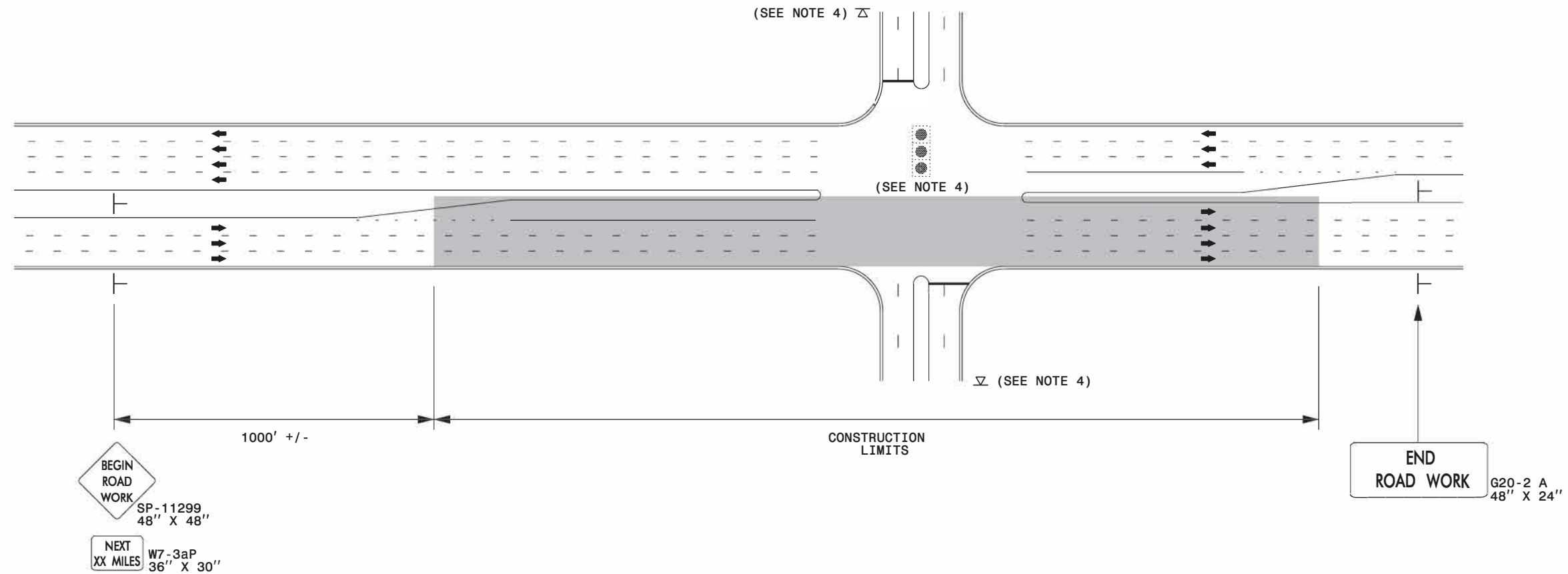
-Y- LINE SIGNING

SIGNING NOTES AND PLACEMENT PER DIRECTION	1	 <small>W20-1 48" X 48"</small>	<p>PLACE 1000' PRIOR TO BEGINNING OF CONSTRUCTION LIMITS. ONLY USED ON -Y- LINES IF RESURFACING LIMITS EXTEND 1000' ALONG -Y- LINE.</p> <p>#2 SIGN ONLY USED WHEN RESURFACING LIMITS ARE 2 OR MORE MILES IN LENGTH. ROUND UP TO NEXT WHOLE NUMBER. (NO FRACTIONAL OR DECIMAL NUMBERS)</p>	<p style="text-align: center;">NO REQUIRED STATIONARY SIGNING FOR THE FOLLOWING -Y- LINE CONDITIONS:</p> <ol style="list-style-type: none"> 1) LESS THAN 1000' OF RESURFACING ALONG -Y- LINE 2) SUBDIVISION ROADS 3) DEAD END ROADS <p>WHEN PAVING/CONSTRUCTION ACTIVITIES PROCEED ACROSS AN UNSIGNED -Y- LINE, ADVANCE WARNING PORTABLE SIGNS SHALL BE USED ALONG THE -Y- LINE AS SHOWN BELOW. REMOVE UPON COMPLETION OF WORK.</p> <div style="display: flex; justify-content: space-around; align-items: center;"> <div style="text-align: center;"> <small>W20-1 48" X 48"</small> </div> <div style="text-align: center;"> <small>W20-7 A 48" X 48"</small> </div> </div> <p>PLACED 500' IN ADVANCE OF FLAGGER. PLACED 250' IN ADVANCE OF FLAGGER.</p>
	2	 <small>W7-3aP 24" X 18"</small>		
	3	 <small>W8-7 48" X 48"</small>	<p>- ALTERNATE THE FOLLOWING TWO SIGNS:</p> <p>- STARTING WITH "LOOSE GRAVEL" (W8-7) FOLLOWED BY "UNMARKED PAVEMENT".</p> <p>- PLACE INITIALLY AT THE CONSTRUCTION LIMITS AND SPACED 1 MILE APART THEREAFTER.</p> <p>- AT TEE INTERSECTIONS INSTALL INITIALLY 0.5 MILE FROM INTERSECTION AND SPACE 1 MILE APART THEREAFTER.</p>	
		 <small>SP 48" X 48"</small>		
	4	 <small>SP 13106 48" X 48"</small>	<p>- THESE ARE FOR -Y- LINES THAT ARE "THROUGH" ROADWAYS.</p> <p>- DEAD END AND SUBDIVISION ROADS ARE NOT "THROUGH" ROADWAYS.</p> <p>- INSTALL 500' +/- FROM EACH -Y- LINE APPROACH AS SHOWN ABOVE.</p> <p>- FOR MULTIPLE -Y- LINES THAT ARE SEPARATED BY 0.25 MILES OR LESS, TREAT AS A SINGLE UNIT AND INSTALL WITHIN 500' OF EACH APPROACH.</p> <p>- A MAXIMUM OF 2 SIGN SETS PER MILE. DO NOT INSTALL WHEN -Y- LINES ARE WITHIN 0.5 MILES FROM "END ROAD WORK" SIGN.</p> <p>- FOR TEE INTERSECTIONS, INSTALL WITHIN 500' +/- OF THE INTERSECTION ALONG -L- LINE.</p>	
5	 <small>G20-2 A 48" X 24"</small>	<p>PLACE 500' FOLLOWING THE END OF CONSTRUCTION LIMITS OR AS SHOWN WHEN WORK ENDS AT A 3-WAY TEE INTERSECTION.</p>		

DIVISION OF HIGHWAYS
STATE OF NORTH CAROLINA
DEPARTMENT OF TRANSPORTATION
WORK ZONE TRAFFIC CONTROL

**ADVANCE WARNING SIGNS
FOR
ASPHALT SURFACE TREATMENTS
2 LANE ROADWAYS**

URBAN / SUBURBAN WORKZONES



NOTES:

- 1) 48" x 48" SIZED SIGNS (SP- 11299) MAY BE REDUCED TO 36" X 36" ON ROADWAYS WITH SPEED LIMITS OF 40 MPH OR LESS.
- 2) MOUNT SIGNS THAT ARE LARGER THAN 10 SQUARE FEET IN AREA ON TWO OR MORE WOOD OR U-CHANNEL SUPPORTS. PERFORATED SQUARE TUBING SUPPORT SYSTEMS MAY SUPPORT LARGER AREAS ON A SINGLE SUPPORT. FOLLOW MANUFACTURER'S RECOMMENDATIONS. THESE SYSTEMS SHALL BE NCHRP 350 COMPLIANT AND NCDOT APPROVED.
- 3) ADVANCE WARNING SIGNS NOT REQUIRED ON NON-SIGNALIZED SIDE STREETS.
- 4) MAY USE LAW ENFORCEMENT TO CONTROL TRAFFIC AT SIGNALIZED INTERSECTIONS AS DIRECTED BY THE ENGINEER. PROVIDE PORTABLE "ROAD WORK AHEAD" (W20-1) SIGNS 500' IN ADVANCE ALONG BOTH APPROACHES FROM THE SIDE STREETS WHEN PAVING PROCEEDS THROUGH THE INTERSECTION.
- 5) LATERAL CLEARANCE AT ALL SIGN LOCATIONS SHALL BE 2' AS MEASURED FROM THE EDGE OF PAVEMENT OR THE FACE OF THE CURB. WHEN UNABLE TO OBTAIN THE LATERAL CLEARANCE WITHIN THE MEDIAN AREA USE SHOULDER MOUNTS ONLY.
- 6) SIGN MOUNT LOCATIONS SHALL NOT BLOCK SIDEWALKS OR DRIVEWAYS.
- 7) IF STATIONARY GENERAL WARNING SIGNS ARE USED, THEY WILL BE PAID FOR PER SECTION 104 OF THE NCDOT STANDARD SPECIFICATIONS AS EXTRA WORK.
- 8) IF MILLED AREAS ARE NOT PAVED BACK BY THE END OF THE WORK DAY, PORTABLE SIGNS SHALL BE USED TO WARN DRIVERS OF THE PRESENT CONDITIONS. THESE ARE TO INCLUDE, BUT NOT LIMITED TO "ROUGH ROAD" W8-8, "UNEVEN LANES" W8-11, "GROOVED PAVEMENT" W8-15 w/MOTORCYCLE PLAQUE MOUNTED BELOW. THESE ARE TO BE DOUBLE INDICATED ON MULTI-LANE ROADWAYS WITH SPEED LIMITS 45 MPH AND GREATER WHERE LATERAL CLEARANCE CAN BE OBTAINED WITHIN THE MEDIAN AREAS. THESE PORTABLE SIGNS ARE INCIDENTAL TO THE OTHER ITEMS OF WORK INCLUDED IN THE TEMPORARY TRAFFIC CONTROL (LUMP SUM) PAY ITEM.

LEGEND

- ┆ STATIONARY SIGN
- ➔ DIRECTION OF TRAFFIC FLOW



**RESURFACING ADVANCE
WARNING SIGNS FOR
URBAN / SUBURBAN
FACILITIES**

SIGN NUMBER: 11299

BACKG COLOR: Fluorescent Orange

DESIGN BY: WJ

CHECKED BY:

DATE: Jun 22, 2011

TYPE: B

COPY COLOR: Black

PROJECT ID: ALL

DIV: ALL

QUANTITY: SEE PLANS

SYMBOL	X	Y	WID	HT

SIGN WIDTH: 5'-6"

HEIGHT: 5'-6"

SP 11299

PROJECT NO.	SHEET NO.	TOTAL NO.
2020CPT.13.03.20571, 2020CPT.13.03.20572	9	10
2020CPT.13.07.21001, 2020CPT.13.07.21002		

TOTAL AREA: 30.5 Sq.Ft.

BORDER TYPE: INSET

RECESS: 0.59"

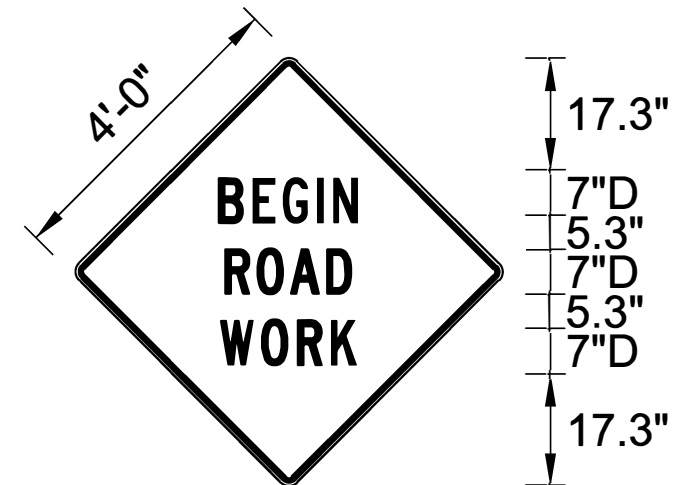
WIDTH: 0.75"

RADII: 1.38"

NO. Z BARS: N/A

LENGTH: N/A

MAT'L: 0.125" (3.2 mm) ALUMINUM



BORDER

R=1.38"

TH=0.75"

IN=0.59"

Spacing Factor is 1 unless specified otherwise

USE NOTES: 1,2

1. Legend and border shall be direct applied black non-reflective sheeting.
2. Background shall be Type VII, VIII, or IX (prismatic) fluorescent orange retroreflective sheeting.

LETTER POSITIONS

Letter spacings are to start of next letter																				Series/Size	
																				Text Length	
		B	E	G	I	N															D 2000
	20.5	6	5.4	6.3	2.8	4.8	20.5														25.2
		R	O	A	D																D 2000
	21.4	5.8	5.9	7	4.8	21.4															23.5
		W	O	R	K																D 2000
	20.9	7.1	6.5	5.9	4.9	20.9															24.5

SIGN NUMBER: SP13106
 TYPE: STATIONARY
 QUANTITY: SEE PLANS

BACKG COLOR: Fluorescent Orange
 COPY COLOR: Black

DESIGN BY: B. RASHID
 PROJECT ID:

CHECKED BY: AIA
 DIV:

DATE: Apr 26, 2013

SYMBOL	X	Y	WID	HT

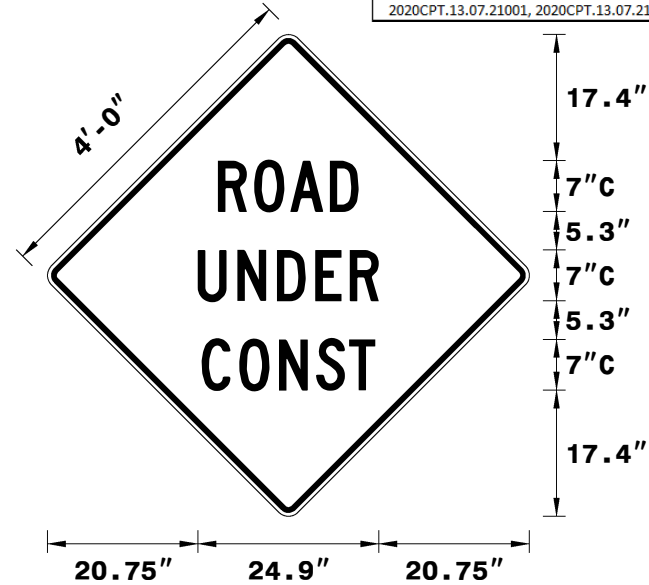
SIGN WIDTH: 4'-0"
 HEIGHT: 4'-0"
 TOTAL AREA: 16.00 Sq.Ft.

BORDER TYPE: INSET
 RECESS: 0.75"
 WIDTH: 1.25"
 RADII: 3"

NO. Z BARS:
 LENGTH:

MAT'L: 0.080" (2.0 mm) ALUMINUM

PROJECT NO.	SHEET NO.	TOTAL NO.
2020CPT.13.03.20571, 2020CPT.13.03.20572	10	10
2020CPT.13.07.21001, 2020CPT.13.07.21002		



Spacing Factor is 1 unless specified otherwise

USE NOTES: 1,2

- Legend and border shall be direct applied black non-reflective sheeting.
- Background shall be NC GRADE B fluorescent orange retroreflective sheeting.

LETTER POSITIONS

Letter spacings are to start of next letter

Letter spacings are to start of next letter																		Series/Size
																		Text Length
		R	O	A	D													C 2000
23.5	5	5	5.5	3.9	23.5													19.3
		U	N	D	E	R												C 2000
20.7	5.5	5.5	5.3	4.8	3.9	20.7												24.9
		C	O	N	S	T												C 2000
21.2	5.2	5.5	5.1	4.6	3.6	21.2												23.9