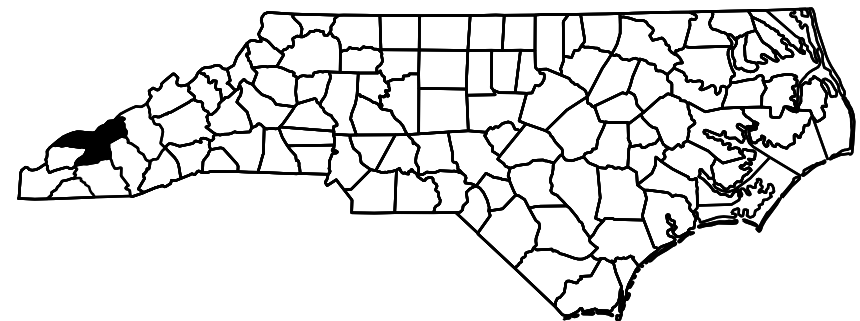
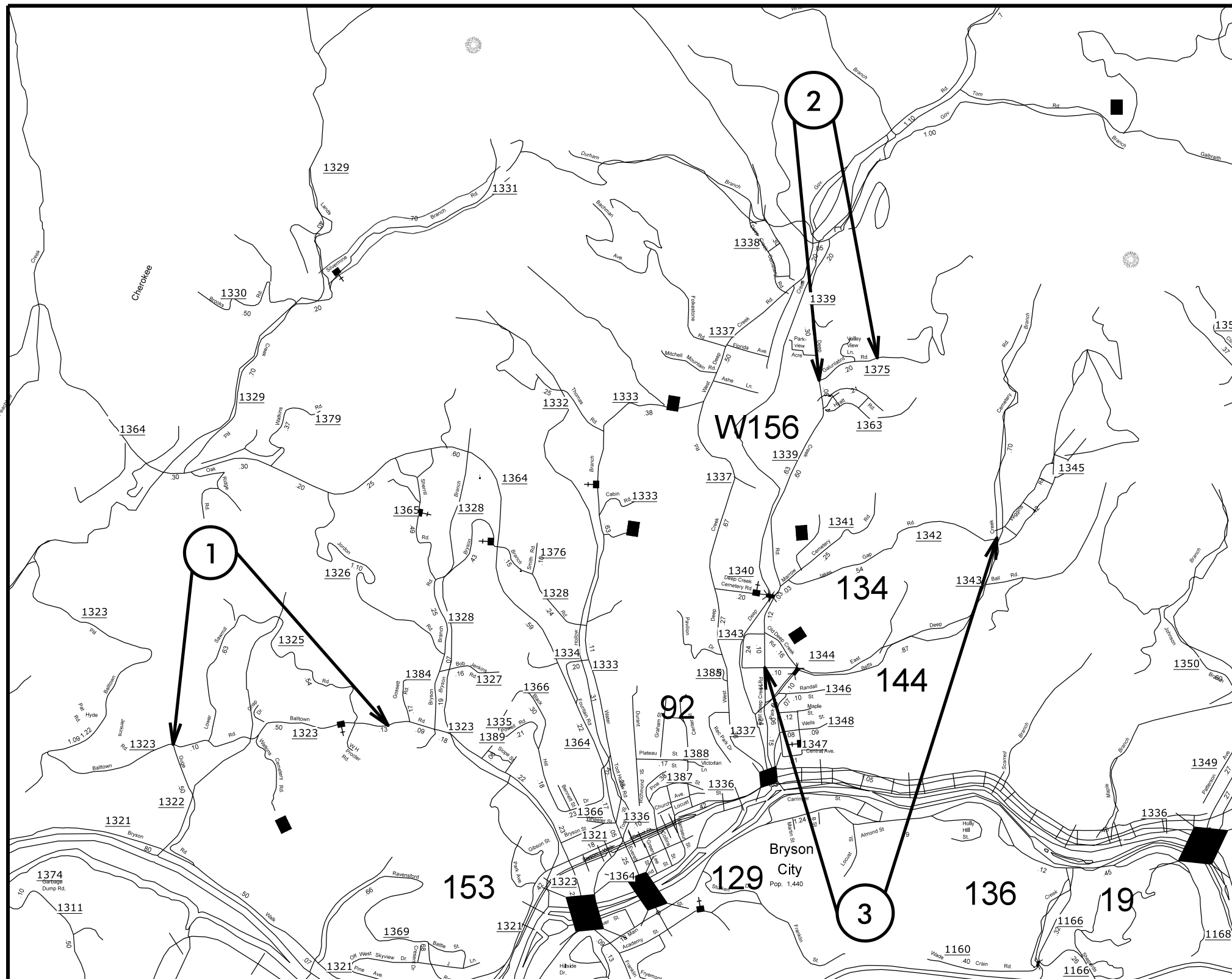


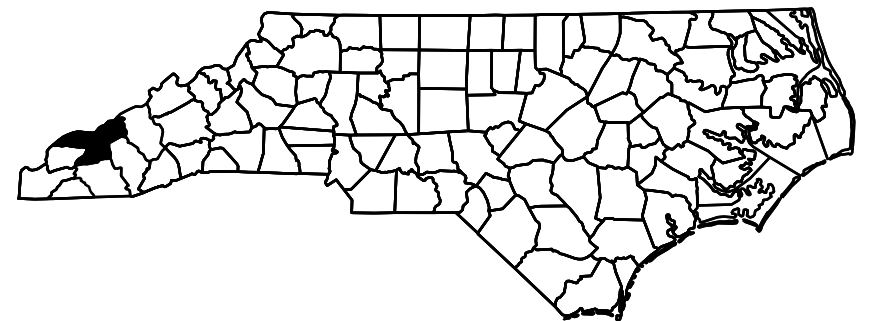
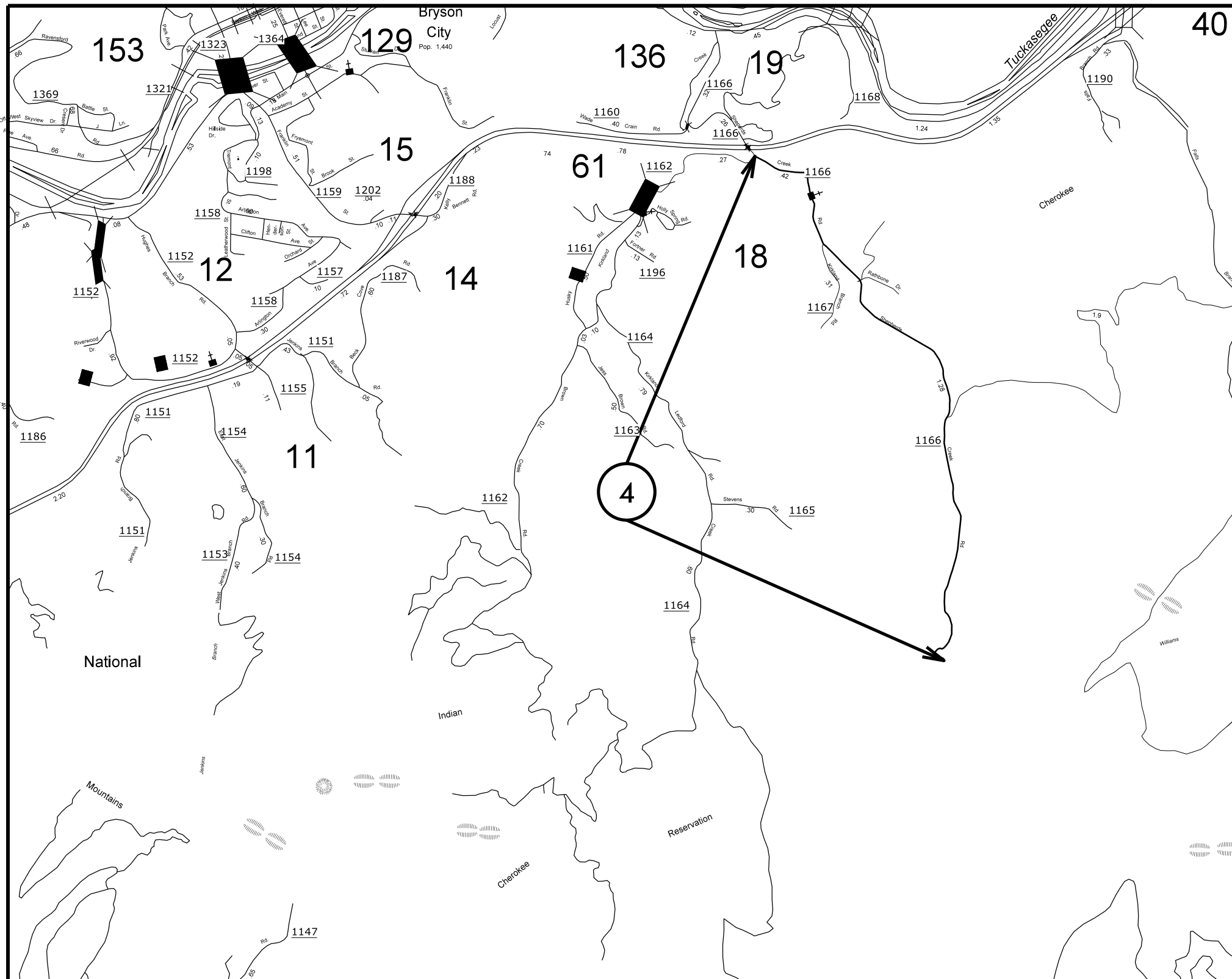
# SWAIN COUNTY

PROJECT REFERENCE NO.		SHEET NO.
14CR.20871.10		1
STATE PROJECT	F.A. PROJECT NO.	DESCRIPTION
14CR.20871.10		



# SWAIN COUNTY

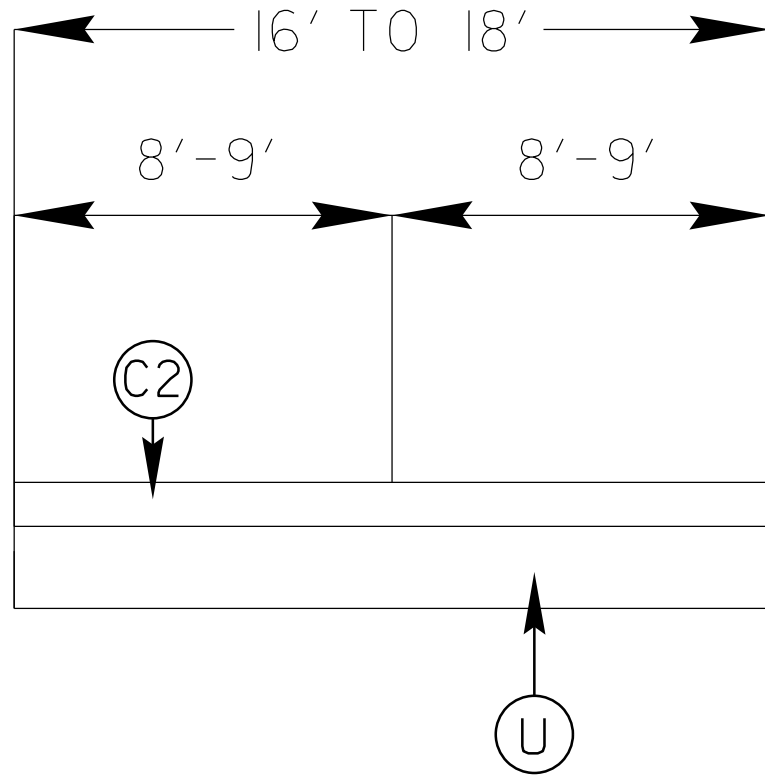
PROJECT REFERENCE NO.		SHEET NO.
14CR.20871.10		2
STATE PROJECT	F.A. PROJECT NO.	DESCRIPTION
14CR.20871.10		



PROJECT REFERENCE NO.		SHEET NO.
14CR.20871.10		3
STATE PROJECT	F.A. PROJECT NO.	DESCRIPTION
14CR.20871.10		

# TYPICAL 1

## SWAIN



### SURFACING SCHEDULE

ITEM NO	DESCRIPTION
C2	PROP. APPROX. 1 1/2" ASPHALT CONCRETE SURFACE COURSE, TYPE S9.5B, AT AN AVERAGE RATE OF 168 LBS. PER SQ. YD.
U	EXISTING ASPHALT

PROJECT NO.	SHEET NO.	TOTAL NO.
14CR.20871.10	4	4

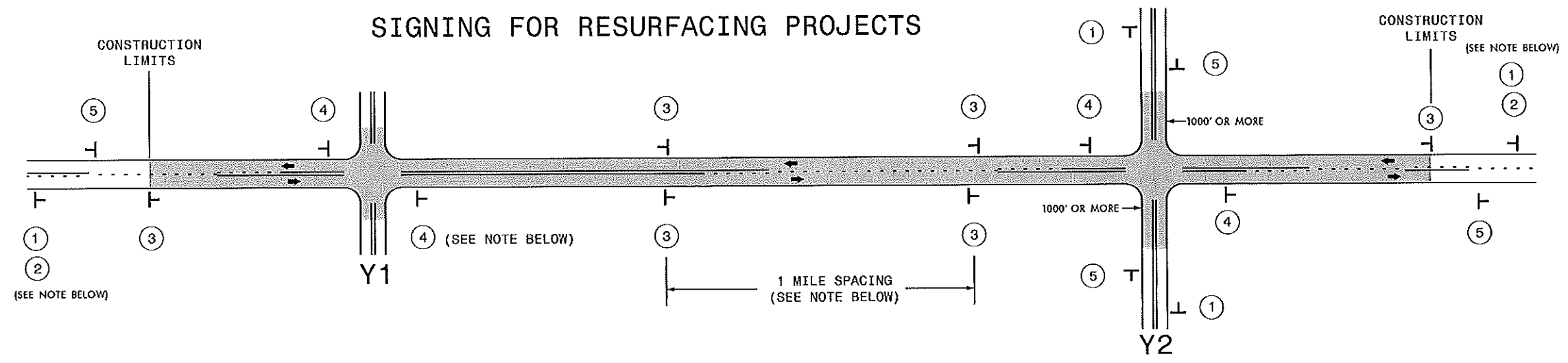
### SUMMARY OF QUANTITIES

PROJECT NO	COUNTY	MAP NO	ROUTE	DESCRIPTION	TYP NO	LANES	LANE TYPE	FINAL SURFACE TESTING REQUIRED	WARM MIX ASPHALT REQUIRED	LENGTH MI	WIDTH FT	SURFACE COURSE, S9.5B TONS	ASPHALT BINDER FOR PLANT MIX TONS
14CR.20871.10	Swain	1	SR-1323	FROM .06 MILES EAST OF SR-1384 TO SR-1322	1	2	2WU	NO	NO	0.85	18	805	48
<b>TOTAL FOR MAP NO. 1</b>										<b>0.85</b>		<b>805</b>	<b>48</b>
14CR.20871.10	Swain	2	SR-1375	FROM SR-1339 TO END OF PAVEMENT	1	2	2WU	NO	NO	0.3	16	253	15
<b>TOTAL FOR MAP NO. 2</b>										<b>0.3</b>		<b>253</b>	<b>15</b>
14CR.20871.10	Swain	3	SR-1343	FROM SR-1339 TO SR-1345	1	2	2WU	NO	NO	1	16	850	51
<b>TOTAL FOR MAP NO. 3</b>										<b>1</b>		<b>850</b>	<b>51</b>
14CR.20871.10	Swain	4	SR-1166	FROM SR-1162 TO END OF PAVEMENT	1	2	2WU	NO	NO	1.75	18	1,688	101
<b>TOTAL FOR MAP NO. 4</b>										<b>1.75</b>		<b>1,688</b>	<b>101</b>
<b>TOTAL FOR PROJ NO. 14CR.20871.10</b>										<b>3.9</b>		<b>3,596</b>	<b>215</b>
<b>GRAND TOTAL</b>										<b>3.9</b>		<b>3,596</b>	<b>215</b>

### THERMOPLASTIC AND PAINT QUANTITIES

PROJECT NO	COUNTY	MAP NO	ROUTE	DESCRIPTION	TYP NO	LANES	LANE TYPE	LENGTH	WIDTH	4413000000	4457000000-N	4810000000-E		4835000000-E
										WORK ZONE ADVANCE GENERAL WARNING SIGNING SF	TEMPORARY TRAFFIC CONTROL LS	4" WHITE PAINT LF	4" YELLOW PAINT LF	24" WHITE PAINT LF
14CR.20871.10	Swain	1	SR-1323	FROM .06 MILES EAST OF SR-1384 TO SR-1322	1	2	2WU	0.85	18	48	1	18,292	18,292	60
<b>TOTAL FOR MAP NO. 1</b>								<b>0.85</b>		<b>48</b>	<b>1</b>	<b>18,292</b>	<b>18,292</b>	<b>60</b>
14CR.20871.10	Swain	2	SR-1375	FROM SR-1339 TO END OF PAVEMENT	1	2	2WU	0.3	16	48		6,456	6,456	60
<b>TOTAL FOR MAP NO. 2</b>								<b>0.3</b>		<b>48</b>		<b>6,456</b>	<b>6,456</b>	<b>60</b>
14CR.20871.10	Swain	3	SR-1343	FROM SR-1339 TO SR-1345	1	2	2WU	1	16	48		21,520	21,520	60
<b>TOTAL FOR MAP NO. 3</b>								<b>1</b>		<b>48</b>		<b>21,520</b>	<b>21,520</b>	<b>60</b>
14CR.20871.10	Swain	4	SR-1166	FROM SR-1162 TO END OF PAVEMENT	1	2	2WU	1.75	18	48		37,660	37,660	120
<b>TOTAL FOR MAP NO. 4</b>								<b>1.75</b>		<b>48</b>		<b>37,660</b>	<b>37,660</b>	<b>120</b>
<b>TOTAL FOR PROJ NO. 14CR.20871.10</b>								<b>3.9</b>		<b>192</b>	<b>1</b>	<b>83,928</b>	<b>83,928</b>	<b>300</b>
											<b>167,856</b>			
<b>GRAND TOTAL</b>								<b>3.9</b>		<b>192</b>	<b>1</b>	<b>83,928</b>	<b>83,928</b>	<b>300</b>
											<b>167,856</b>			

## SIGNING FOR RESURFACING PROJECTS



**LEGEND**  
 T STATIONARY SIGN  
 ← DIRECTION OF TRAFFIC FLOW

### MAINLINE (-L-) SIGNING

### -Y- LINE SIGNING

<b>SIGNING NOTES AND PLACEMENT PER DIRECTION</b>	①		PLACE 1000' PRIOR TO BEGINNING OF CONSTRUCTION LIMITS. ONLY USED ON -Y- LINES IF RESURFACING LIMITS EXTEND 1000' ALONG -Y- LINE.	<p><b>NO REQUIRED STATIONARY SIGNING FOR THE FOLLOWING -Y- LINE CONDITIONS:</b></p> <ol style="list-style-type: none"> <li>1) LESS THAN 1000' OF RESURFACING ALONG -Y- LINE</li> <li>2) SUBDIVISION ROADS</li> <li>3) DEAD END ROADS</li> </ol> <p>WHEN PAVING/CONSTRUCTION ACTIVITIES PROCEED ACROSS AN UNSIGNED -Y- LINE, ADVANCE WARNING PORTABLE SIGNS SHALL BE USED ALONG THE -Y- LINE AS SHOWN BELOW. REMOVE UPON COMPLETION OF WORK.</p> <div style="display: flex; justify-content: space-around; align-items: center;"> <div style="text-align: center;">   <small>W20-1 48" X 48"</small> </div> <div style="text-align: center;">   <small>W20-7 A 48" X 48"</small> </div> </div> <p>PLACED 500' IN ADVANCE OF FLAGGER. PLACED 250' IN ADVANCE OF FLAGGER.</p>
	②		#2 SIGN ONLY USED WHEN RESURFACING LIMITS ARE 2 OR MORE MILES IN LENGTH. ROUND UP TO NEXT WHOLE NUMBER. (NO FRACTIONAL OR DECIMAL NUMBERS)	
	③		PLACE INITIALLY AT THE CONSTRUCTION LIMITS AND SPACED 1 MILE APART THEREAFTER. IF NO -Y- LINES EXIST, PLACE 2ND SET 1/2 MILE FROM THE CONSTRUCTION LIMITS AND THEN SPACE 1 MILE THEREAFTER.	
	④		THESE ARE FOR -Y- LINES THAT ARE "THROUGH" ROADWAYS. DEAD END AND SUBDIVISION ROADS ARE NOT "THROUGH" ROADWAYS. INSTALL 500' +/- FROM EACH -Y- LINE APPROACH AS SHOWN ABOVE. FOR MULTIPLE -Y- LINES THAT ARE SEPARATED BY 0.25 MILES OR LESS, TREAT AS A SINGLE UNIT AND INSTALL WITHIN 500' OF EACH APPROACH. A MAXIMUM OF 2 SIGN SETS PER MILE. DO NOT INSTALL WHEN -Y- LINES ARE WITHIN 0.5 MILES FROM "END ROAD WORK" SIGN.	
	⑤		PLACE 500' FOLLOWING THE END OF CONSTRUCTION LIMITS.	

48'

S:\YAL\WZIC\Resurfacing\2030documents\New\_Procedures\_05\_09\_2013\Resurfacing\_AdvWarn\_21.rvdgn User: mdrrett



**RESURFACING  
 ADVANCE WARNING SIGNS  
 FOR  
 RURAL AND SUBURBAN  
 2 LANE ROADWAYS**