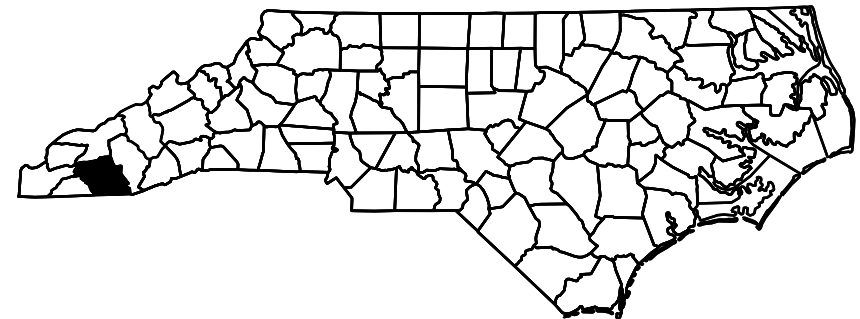
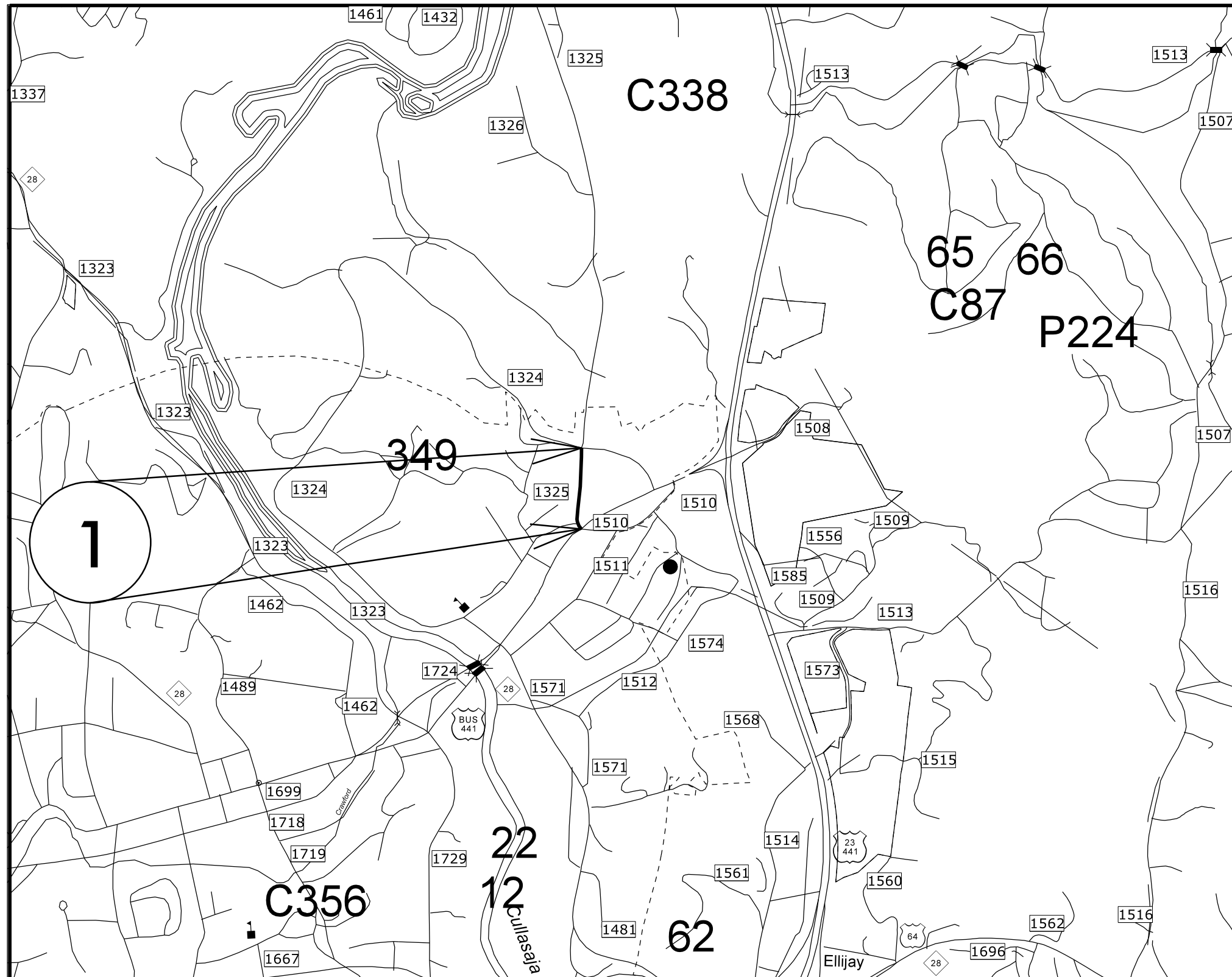


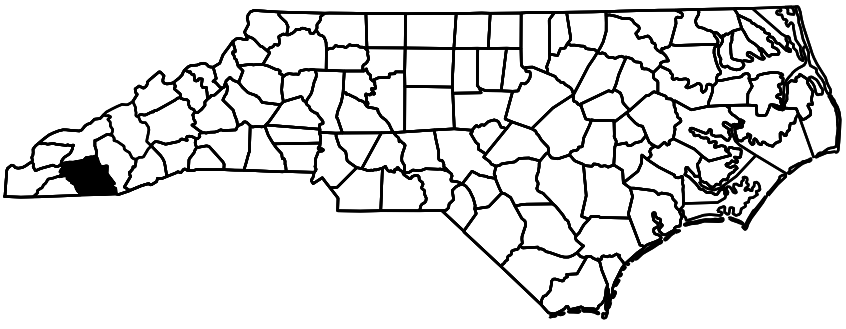
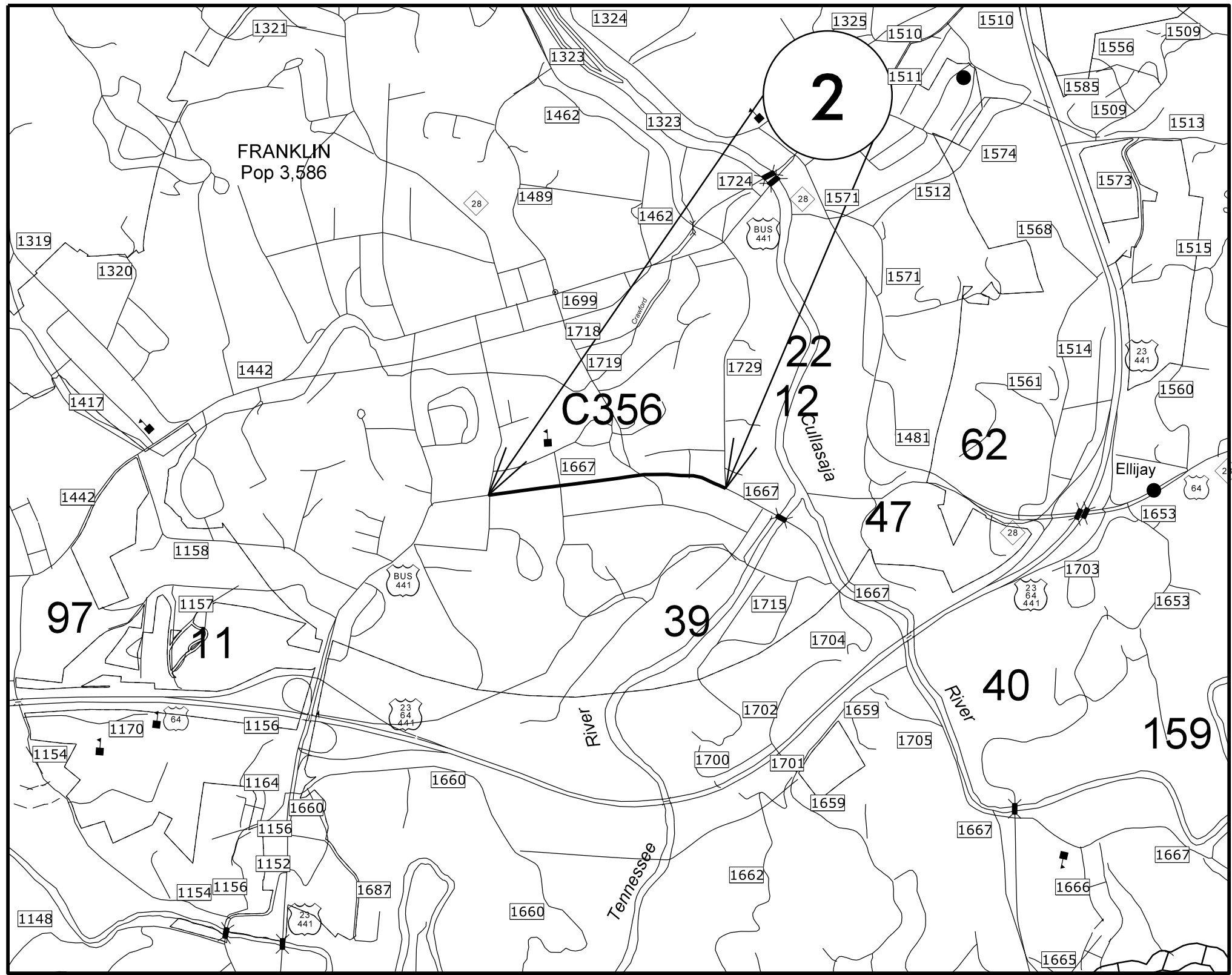
MACON COUNTY

PROJECT REFERENCE NO.		SHEET NO.
14CR.20561.9		1
STATE PROJECT	F.A. PROJECT NO.	DESCRIPTION
14CR.20561.9		



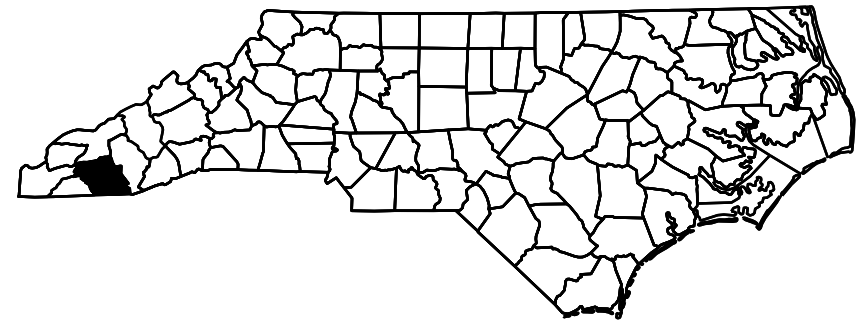
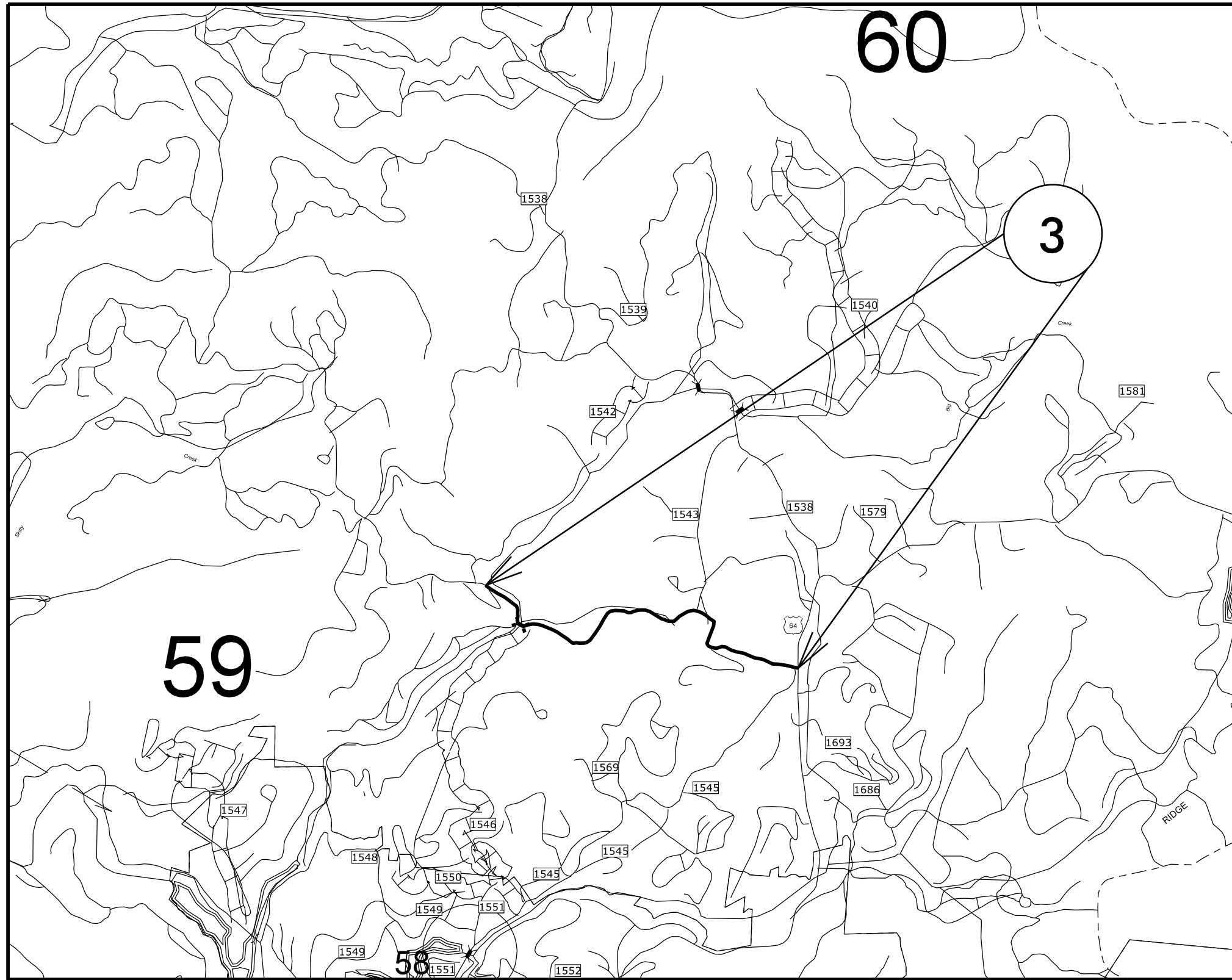
MACON COUNTY

PROJECT REFERENCE NO.		SHEET NO.
14CR.20561.9		2
STATE PROJECT	F.A. PROJECT NO.	DESCRIPTION
14CR.20561.9		



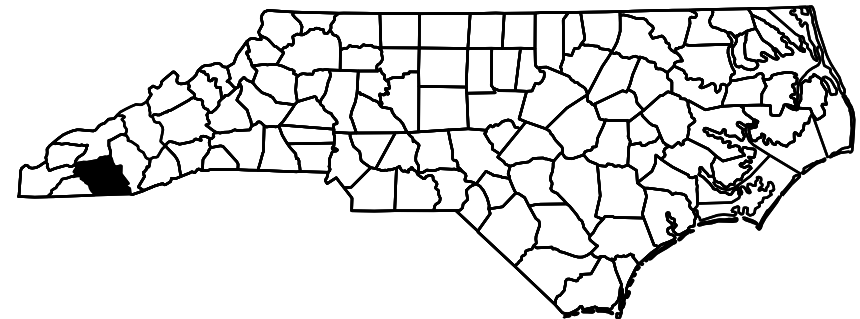
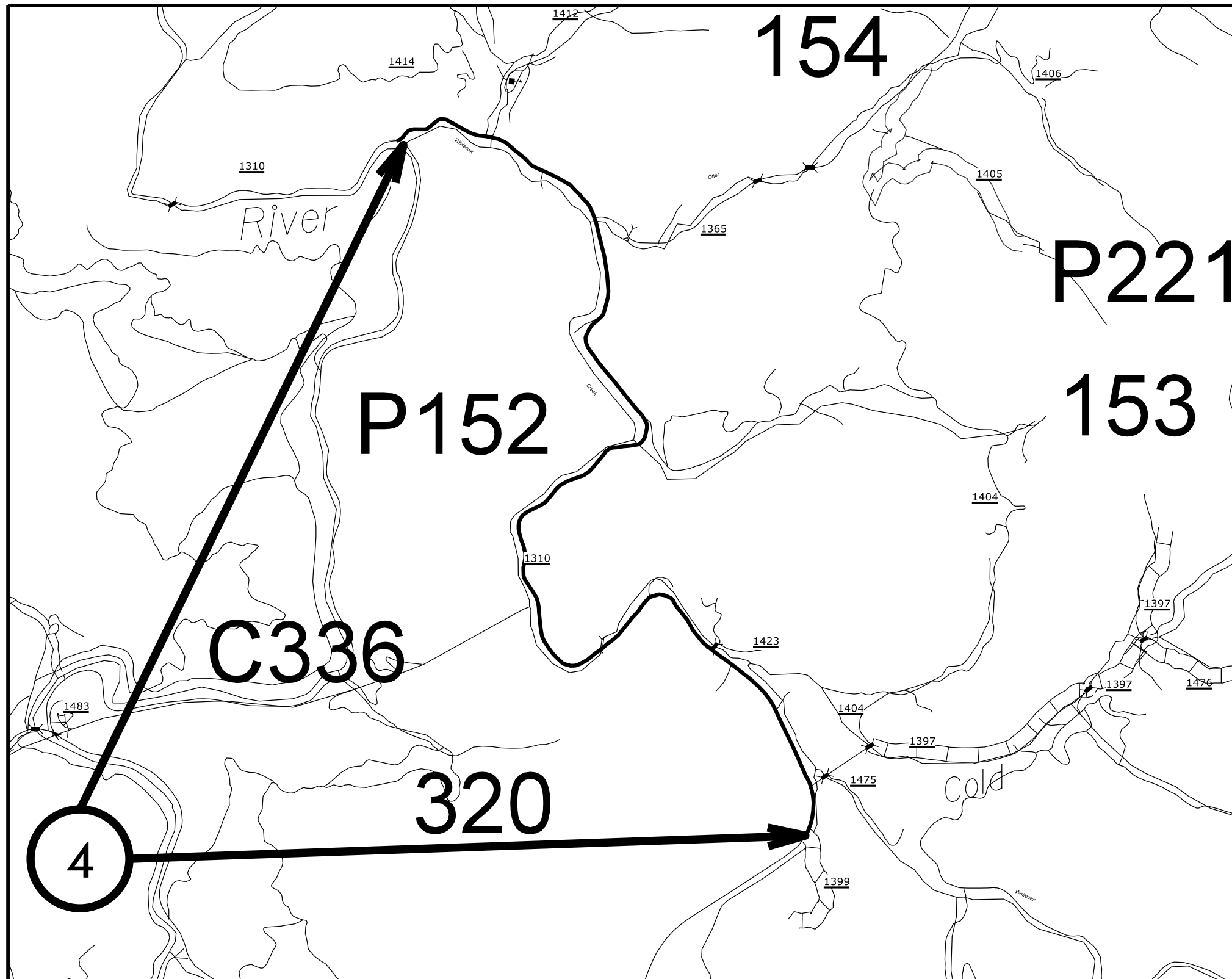
MACON COUNTY

PROJECT REFERENCE NO.		SHEET NO.
14CR.20561.9		3
STATE PROJECT	F.A. PROJECT NO.	DESCRIPTION
14CR.20561.9		



MACON COUNTY

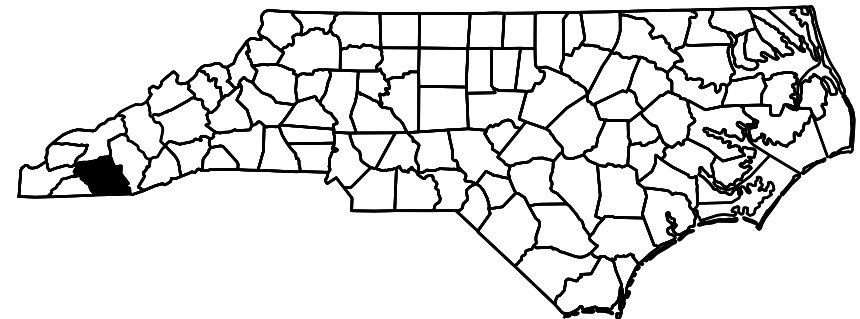
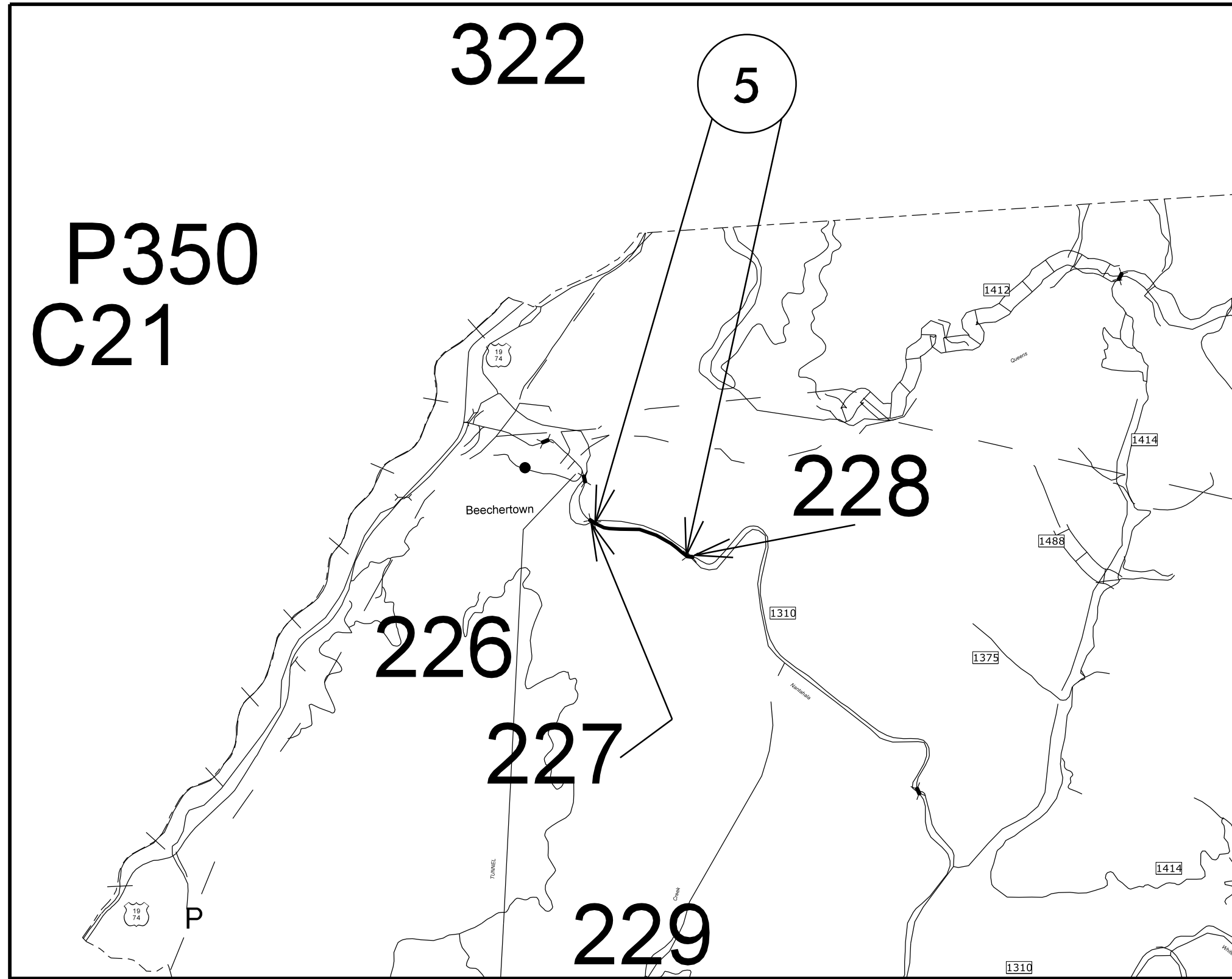
PROJECT REFERENCE NO.		SHEET NO.
14CR.20561.9		4
STATE PROJECT	F.A. PROJECT NO.	DESCRIPTION
14CR.20561.9		



MACON COUNTY

PROJECT REFERENCE NO.		SHEET NO.
14CR.20561.9		5
STATE PROJECT	F.A. PROJECT NO.	DESCRIPTION
14CR.20561.9		

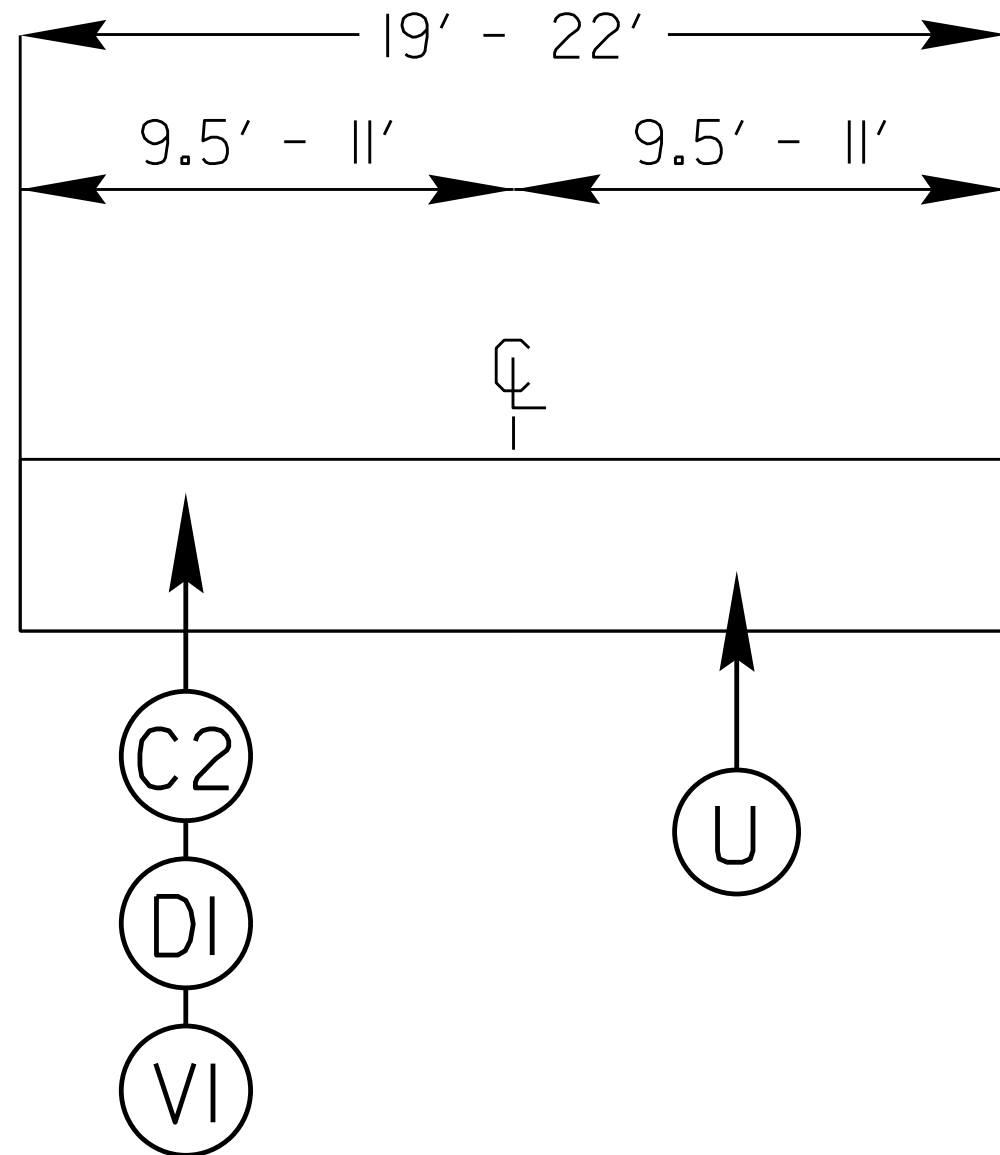
P350
C21



PROJECT REFERENCE NO.		SHEET NO.
14CR.20561.9		6
STATE PROJECT	F.A. PROJECT NO.	DESCRIPTION
14CR.20561.9		

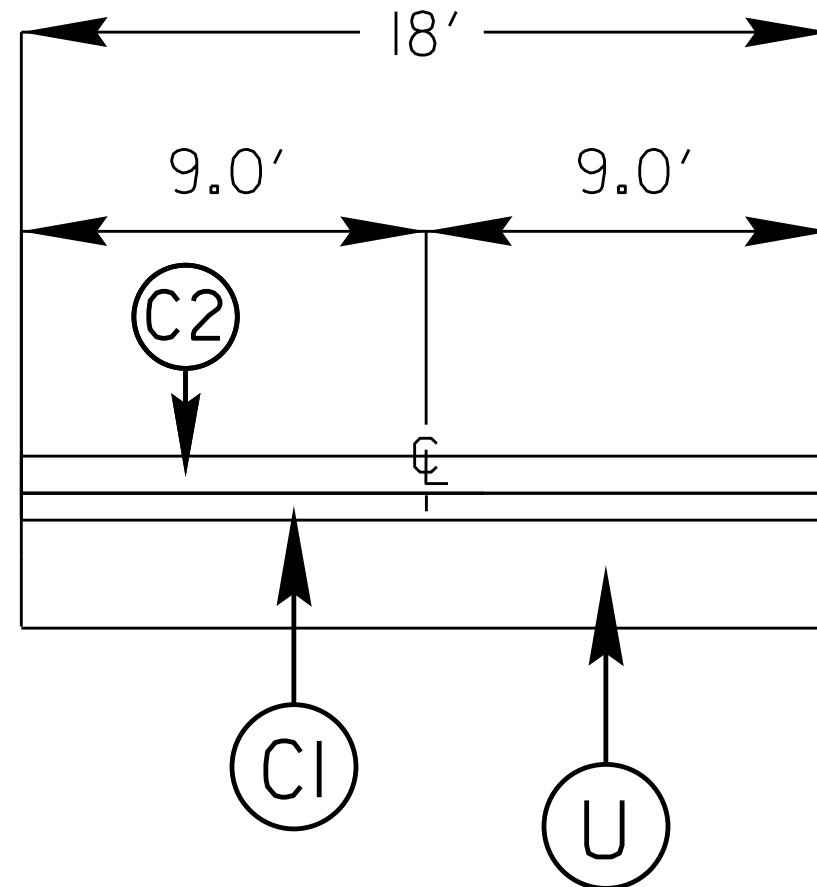
TYPICAL 1

MACON



TYPICAL 2

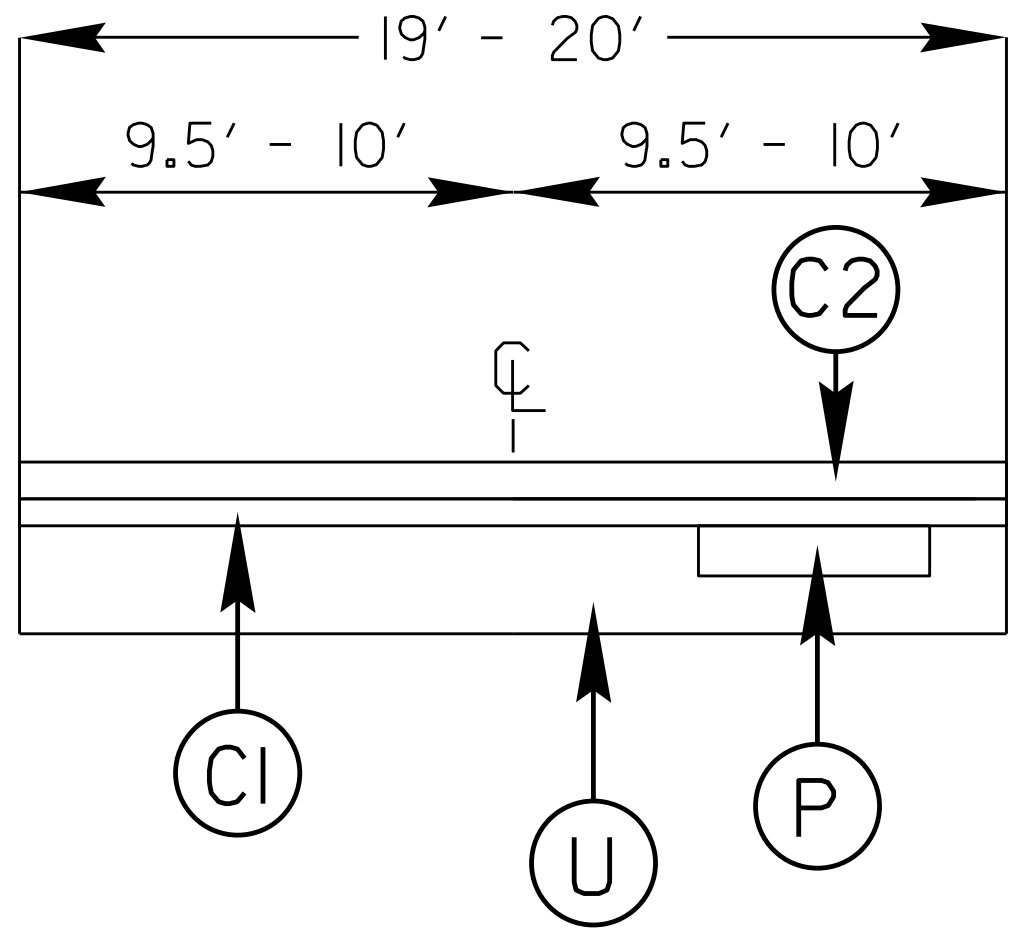
MACON



PROJECT REFERENCE NO.		SHEET NO.
14CR.20561.9		7
STATE PROJECT	F.A. PROJECT NO.	DESCRIPTION
14CR.20561.9		

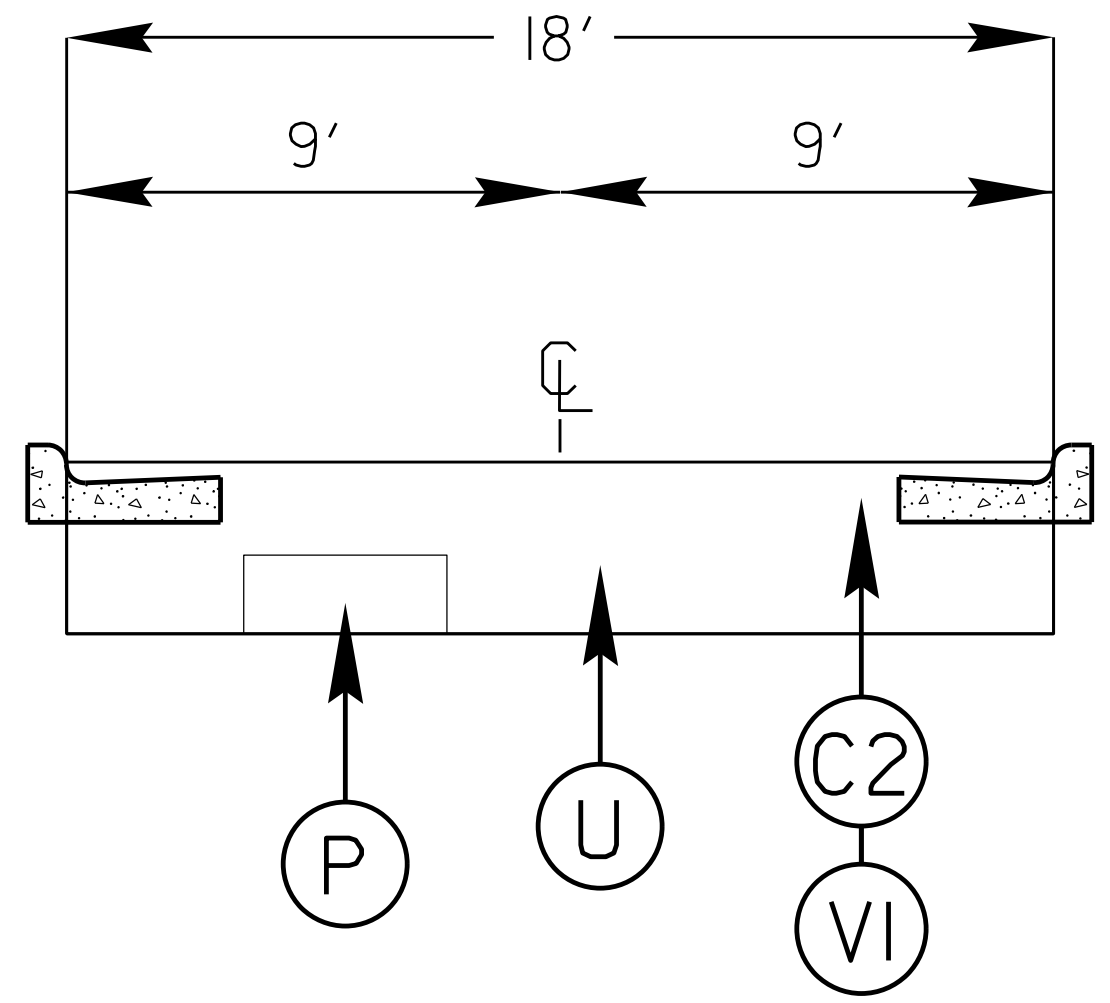
TYPICAL 3

MACON



TYPICAL 4

MACON



NOTE: ON MAP #2 ~~#4~~ RESURFACE TO THE FACE OF THE CURB.

PROJECT REFERENCE NO.		SHEET NO.
14CR.20561.9		8
STATE PROJECT	F.A. PROJECT NO.	DESCRIPTION
14CR.20561.9		

SURFACING SCHEDULE

ITEM NO	DESCRIPTION
C1	PROP. APPROX. 1" ASPHALT CONCRETE LEVELING SURFACE COURSE, TYPE SF9.5A, AT AN AVERAGE RATE OF 100 LBS. PER SQ. YD.
C2	PROP. APPROX. 1 ½" ASPHALT CONCRETE SURFACE COURSE, TYPE S9.5B, AT AN AVERAGE RATE OF 168 LBS. PER SQ. YD.
P	FULL DEPTH PATCHING
U	EXISTING ASPHALT
D1	PROP. APPROX. 2 ½" ASPHALT CONCRETE INTERMEDIATE COURSE, TYPE I19.0B, AT AN AVERAGE RATE OF 285 LBS. PER SQ. YD.
V1	3" MILLING AS DIRECTED BY PROJECT ENGINEER
U	EXISTING ASPHALT

PROJECT NO.	SHEET NO.	TOTAL NO.
14CR.20561.9	9	11

SUMMARY OF QUANTITIES

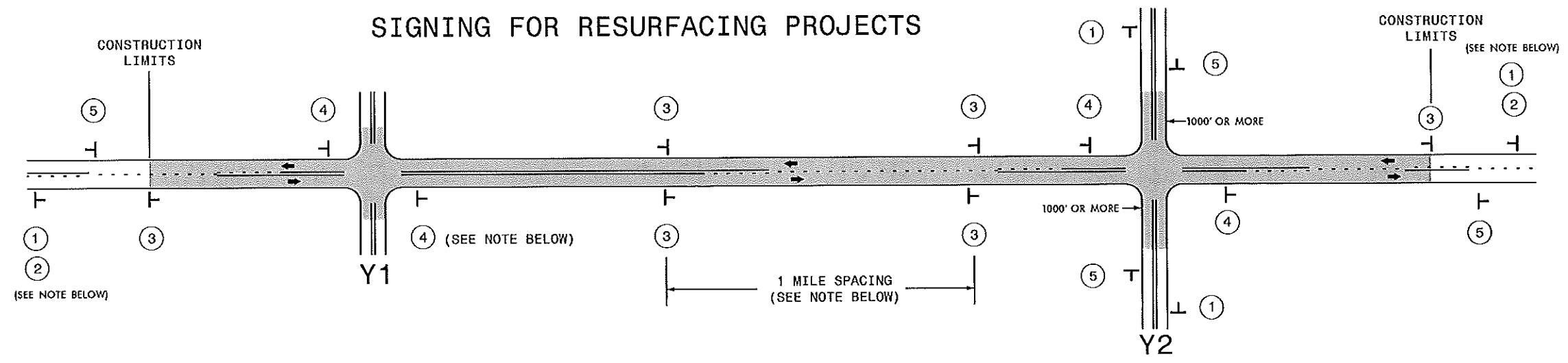
PROJECT NO	COUNTY	MAP NO	ROUTE	DESCRIPTION	TYP NO	LANES	LANE TYPE	FINAL SURFACE TESTING REQUIRED	WARM MIX ASPHALT REQUIRED	LENGTH MI	WIDTH FT	INCIDENTAL STONE BASE TONS	3" MILLING SY	INCIDENTAL MILLING SY	INTERMEDIATE COURSE, I19.0B TONS	SURFACE COURSE, S9.5B TONS	ASPHALT SURFACE COURSE (LEVELING) TYPE SF9.5A TN	ASPHALT BINDER FOR PLANT MIX TONS	PATCHING EXISTING PAVEMENT TONS	ADJ. OF MANHOLES EA	ADJ. OF METER OR VALVE BOX EA	INDUCTIVE LOOP LF	LEAD-IN CABLE LF
14CR.20561.9	Macon	1	SR-1325 LAKE EMORY ROAD	FROM US-441 BUSINESS TO SR-1324 LAKESIDE DRIVE	1	2	2WU	NO	NO	0.2	22	10	2,581		478	236		37		2		250	50
TOTAL FOR MAP NO. 1										0.2		10	2,581		478	236		37		2		250	50
14CR.20561.9	Macon	2	SR-1667 WAYAH STREET	FROM US-441 BUSINESS TO SR-1729 DEPOT STREET	4	2	2WU	NO	NO	0.6	19		8,000			622		37	190	4	14	250	50
TOTAL FOR MAP NO. 2										0.6			8,000			622		37	190	4	14	250	50
14CR.20561.9	Macon	3	SR-1544 FLAT MOUNTAIN ROAD	FROM US-64 TO BRIDGE #59 (0.03 MILES EAST OF MYRTLE SPEED ROAD)	2	2	2WU	NO	NO	1.1	18	10		16		1,061	706	106					
TOTAL FOR MAP NO. 3										1.1		10		16		1,061	706	106					
14CR.20561.9	Macon	4	SR-1310 WAYAH ROAD	FROM SR-1399 HIDDEN CREEK ROAD TO FOREST SERVICE ROAD #308 OLD RIVER ROAD	3	2	2WU	NO	NO	4.11	19	10		12		4,261	2,731	420	400				
TOTAL FOR MAP NO. 4										4.11		10		12		4,261	2,731	420	400				
14CR.20561.9	Macon	5	SR-1310 WAYAH ROAD	FROM END BRIDGE #227 (0.6 MILES EAST OF US 19-74) TO BEGIN BRIDGE #228 (1.0 MILES EAST OF US 19-74)	2	2	2WU	NO	NO	0.37	20			120		396	244	38					
TOTAL FOR MAP NO. 5										0.37				120		396	244	38					
TOTAL FOR PROJ NO. 14CR.20561.9										6.38		30	10,581	148	478	6,576	3,681	638	590	6	14	500	100
GRAND TOTAL										6.38		30	10,581	148	478	6,576	3,681	638	590	6	14	500	100

PROJECT NO.	SHEET NO.	TOTAL NO.
14CR.20561.9	10	11

THERMOPLASTIC AND PAINT QUANTITIES

PROJECT NO	COUNTY	MAP NO	ROUTE	DESCRIPTION	TYP NO	LANES	LANE TYPE	LENGTH	WIDTH	4413000000-E	4457000000-N	4810000000-E		4835000000-E	4905000000-N
										WORK ZONE ADVANCE/GENERAL WARNING SIGNING SF	TEMPORARY TRAFFIC CONTROL LS	4" WHITE PAINT LF	4" YELLOW PAINT LF	24" WHITE PAINT LF	SNOW PLOWABLE MARKERS EA
14CR.20561.9	Macon	1	SR-1325 LAKE EMORY ROAD	FROM US-441 BUSINESS TO SR-1324 LAKESIDE DRIVE	1	2	2WU	0.2	22	48	1	4,304	4,304	100	
TOTAL FOR MAP NO. 1										48	1	4,304	4,304	100	
14CR.20561.9	Macon	2	SR-1667 WAYAH STREET	FROM US-441 BUSINESS TO SR-1729 DEPOT STREET	4	2	2WU	0.6	19	48		12,912	12,912	200	40
TOTAL FOR MAP NO. 2										48		12,912	12,912	200	40
14CR.20561.9	Macon	3	SR-1544 FLAT MOUNTAIN ROAD	FROM US-64 TO BRIDGE #59 (0.03 MILES EAST OF MYRTLE SPEED ROAD)	2	2	2WU	1.1	18	48		23,672	23,672	200	
TOTAL FOR MAP NO. 3										48		23,672	23,672	200	
14CR.20561.9	Macon	4	SR-1310 WAYAH ROAD	FROM SR-1399 HIDDEN CREEK ROAD TO FOREST SERVICE ROAD #308 OLD RIVER ROAD	3	2	2WU	4.11	19	48		88,447	88,447	200	
TOTAL FOR MAP NO. 4										48		88,447	88,447	200	
14CR.20561.9	Macon	5	SR-1310 WAYAH ROAD	FROM END BRIDGE #227 (0.6 MILES EAST OF US 19-74) TO BEGIN BRIDGE #228 (1.0 MILES EAST OF US 19-74)	2	2	2WU	0.37	20	48		7,962	7,962		
TOTAL FOR MAP NO. 5										48		7,962	7,962		
TOTAL FOR PROJ NO. 14CR.20561.9										240	1	137,297	137,297	700	40
GRAND TOTAL												274,594			
GRAND TOTAL										240	1	137,297	137,297	700	40
GRAND TOTAL												274,594			

SIGNING FOR RESURFACING PROJECTS



LEGEND
 T STATIONARY SIGN
 ← DIRECTION OF TRAFFIC FLOW

MAINLINE (-L-) SIGNING

-Y- LINE SIGNING

SIGNING NOTES AND PLACEMENT PER DIRECTION	①	 <small>W20-1 48" X 48"</small>	PLACE 1000' PRIOR TO BEGINNING OF CONSTRUCTION LIMITS. ONLY USED ON -Y- LINES IF RESURFACING LIMITS EXTEND 1000' ALONG -Y- LINE.	<p>NO REQUIRED STATIONARY SIGNING FOR THE FOLLOWING -Y- LINE CONDITIONS:</p> <ol style="list-style-type: none"> 1) LESS THAN 1000' OF RESURFACING ALONG -Y- LINE 2) SUBDIVISION ROADS 3) DEAD END ROADS <p>WHEN PAVING/CONSTRUCTION ACTIVITIES PROCEED ACROSS AN UNSIGNED -Y- LINE, ADVANCE WARNING PORTABLE SIGNS SHALL BE USED ALONG THE -Y- LINE AS SHOWN BELOW. REMOVE UPON COMPLETION OF WORK.</p> <div style="display: flex; justify-content: space-around; align-items: center;"> <div style="text-align: center;"> <small>W20-1 48" X 48"</small> </div> <div style="text-align: center;"> <small>W20-7 A 48" X 48"</small> </div> </div> <p>PLACED 500' IN ADVANCE OF FLAGGER. PLACED 250' IN ADVANCE OF FLAGGER.</p>
	②	 <small>W7-3aP 24" X 18"</small>	#2 SIGN ONLY USED WHEN RESURFACING LIMITS ARE 2 OR MORE MILES IN LENGTH. ROUND UP TO NEXT WHOLE NUMBER. (NO FRACTIONAL OR DECIMAL NUMBERS)	
	③	 <small>SP 13107 48" X 48"</small>	PLACE INITIALLY AT THE CONSTRUCTION LIMITS AND SPACED 1 MILE APART THEREAFTER. IF NO -Y- LINES EXIST, PLACE 2ND SET 1/2 MILE FROM THE CONSTRUCTION LIMITS AND THEN SPACE 1 MILE THEREAFTER.	
	④	 <small>SP 13106 48" X 48"</small>	THESE ARE FOR -Y- LINES THAT ARE "THROUGH" ROADWAYS. DEAD END AND SUBDIVISION ROADS ARE NOT "THROUGH" ROADWAYS. INSTALL 500' +/- FROM EACH -Y- LINE APPROACH AS SHOWN ABOVE. FOR MULTIPLE -Y- LINES THAT ARE SEPARATED BY 0.25 MILES OR LESS, TREAT AS A SINGLE UNIT AND INSTALL WITHIN 500' OF EACH APPROACH. A MAXIMUM OF 2 SIGN SETS PER MILE. DO NOT INSTALL WHEN -Y- LINES ARE WITHIN 0.5 MILES FROM "END ROAD WORK" SIGN.	
	⑤	 <small>G20-2 A 48" X 24"</small>	PLACE 500' FOLLOWING THE END OF CONSTRUCTION LIMITS.	

48'

S:\TAL\WZIC\Resurfacing\2030documents\New_Procedures_05_09_2013\Resurfacing_AdvWarn_21.rvdgn User: mdrrett



**RESURFACING
 ADVANCE WARNING SIGNS
 FOR
 RURAL AND SUBURBAN
 2 LANE ROADWAYS**