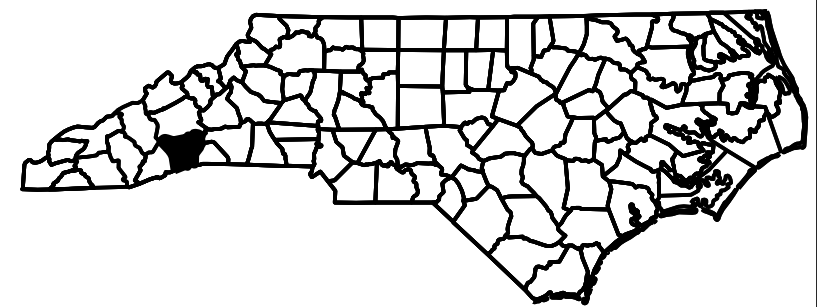
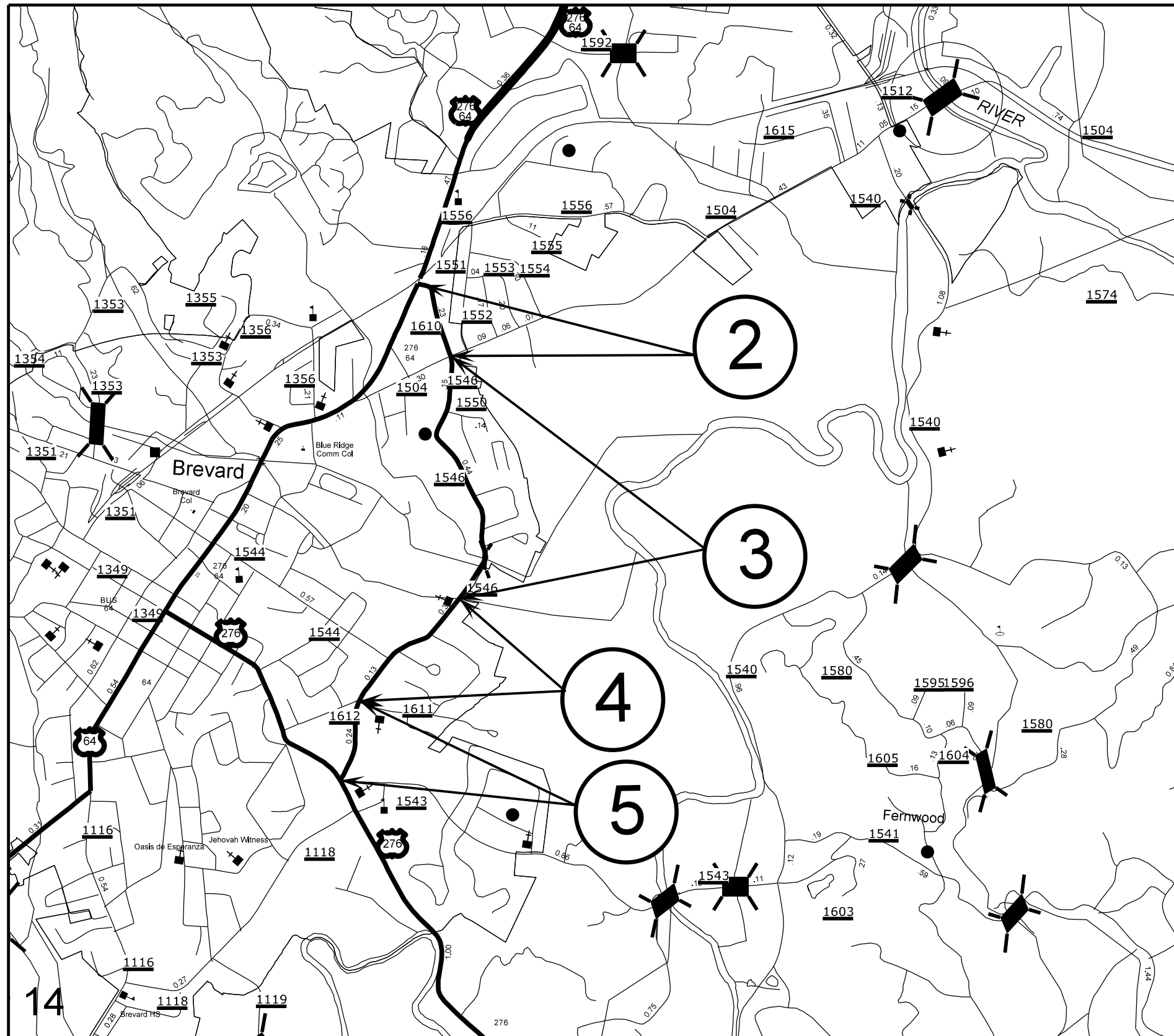


050197

CONTRACT RESURFACING TRANSYLVANIA COUNTY

PROJECT REFERENCE NO.		SHEET NO.
14CR.20881.11		2
STATE PROJECT	F.A. PROJECT NO.	DESCRIPTION
14CR.20881.11		

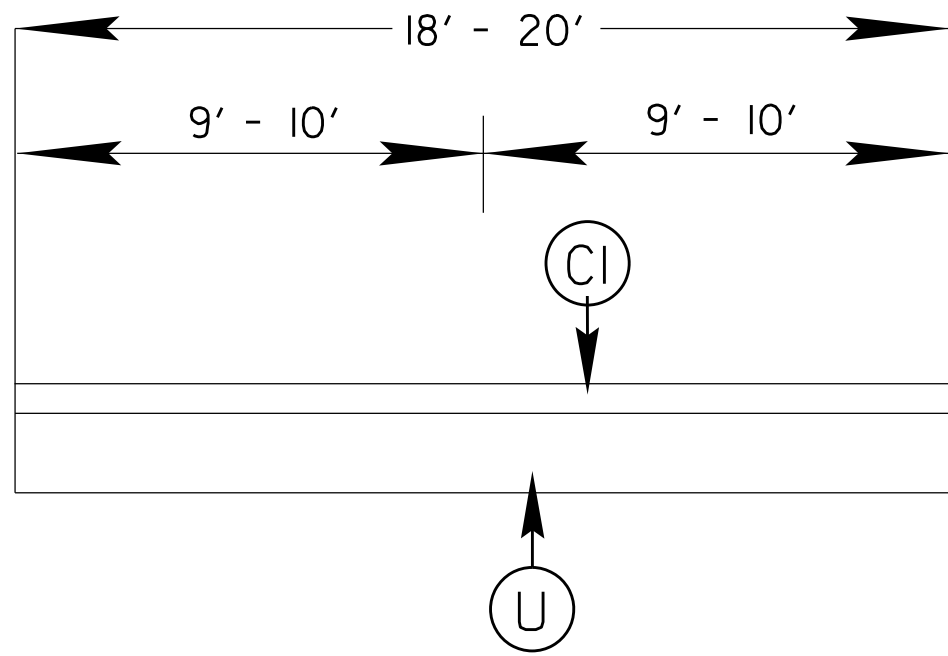


14

050197

PROJECT REFERENCE NO.		SHEET NO.
14CR.20881.11		3
STATE PROJECT	F.A. PROJECT NO.	DESCRIPTION
14CR.20881.11		

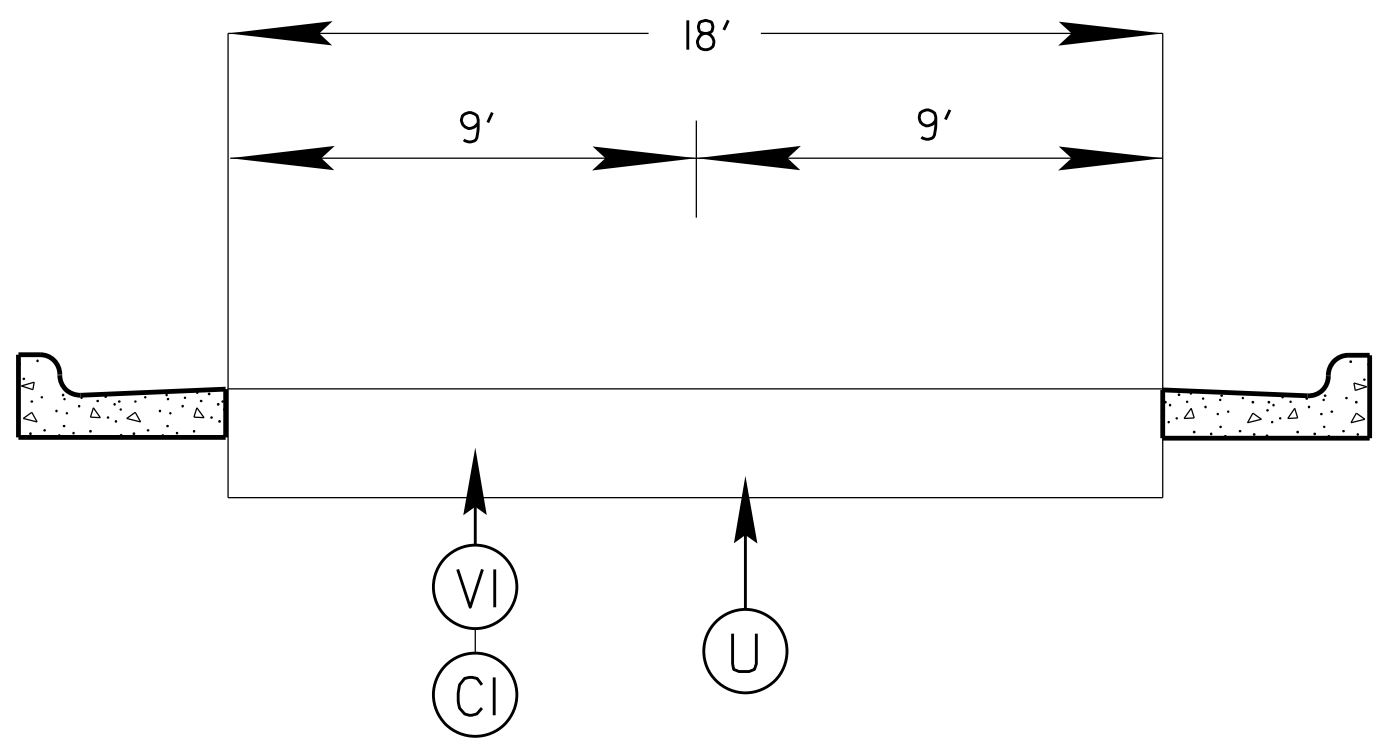
TYPICAL 1

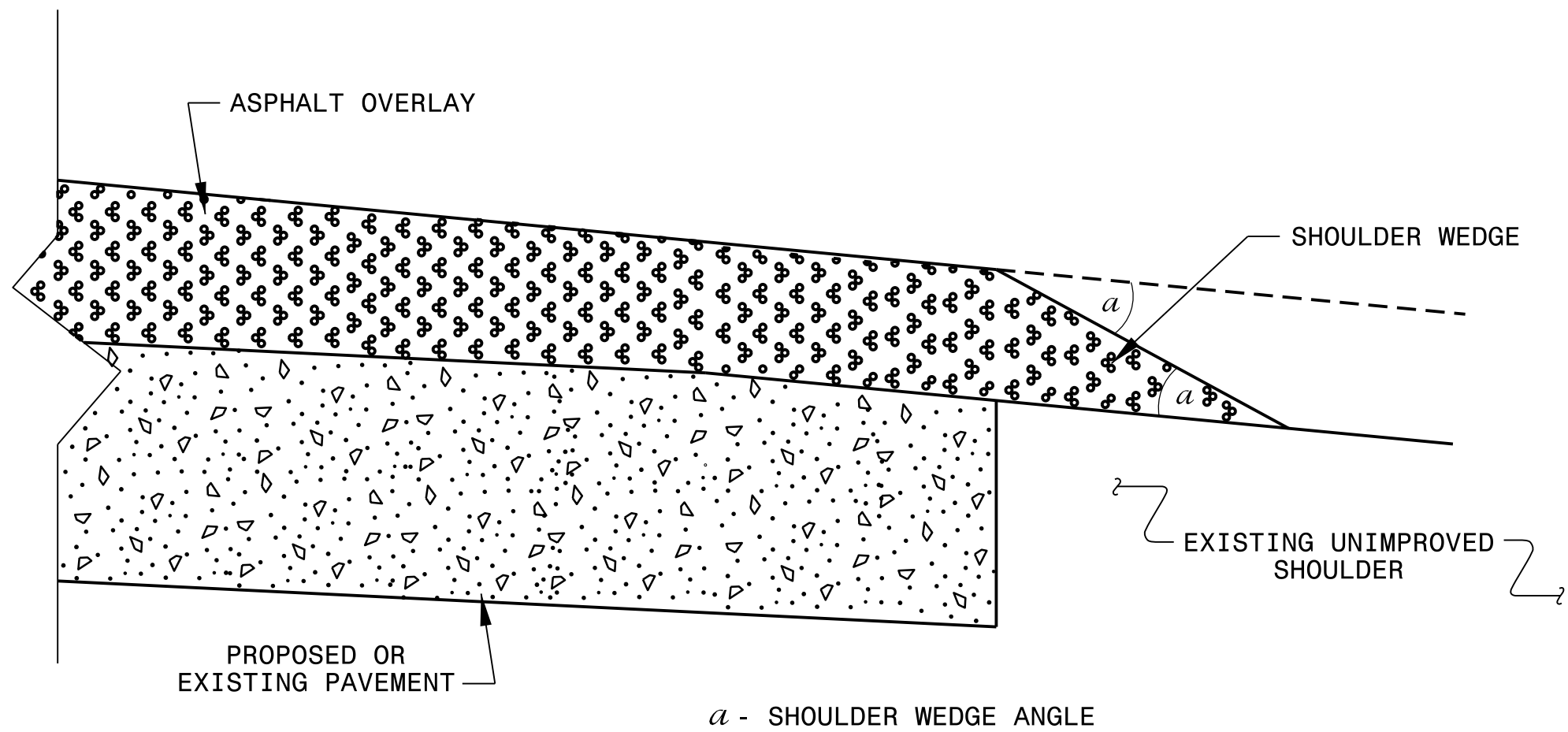


SURFACING SCHEDULE

ITEM NO	DESCRIPTION
C1	ASPHALT CONCRETE SURFACE COURSE, TYPE S9.5B, AT AN AVERAGE RATE OF 168 LBS. PER SQ. YD. (1 1/2")
V1	MILLING ASPHALT PAVEMENT 1 1/2" IN DEPTH AS DIRECTED BY PROJECT ENGINEER.
U	EXISTING PAVEMENT

TYPICAL 2





SHOULDER WEDGE DETAIL

09-APR-2012 12:08
 S:\Contracts\Special Details\howerton\shoulderwedgedetail.dgn
 \$\$\$USERNAME\$\$\$

CONTRACT STANDARDS AND DEVELOPMENT UNIT Office 919-707-6950 FAX 919-250-4119	
SHOULDER WEDGE DETAIL	
ORIGINAL BY: T.SPELL	DATE: 7-19-11
MODIFIED BY:	DATE:
CHECKED BY:	DATE:
FILE SPEC.: s:\usr\details\stand\shoulderwedgedetail.dgn	

PROJECT NO.	SHEET NO.	TOTAL NO.
14CR.20881.11		

SUMMARY OF QUANTITIES

PROJECT NO	COUNTY	MAP NO	ROUTE	DESCRIPTION	TYP NO	FINAL SURFACE TESTING REQUIRED	WARM MIX ASPHALT REQUIRED	LENGTH MI	WIDTH FT	1½" MILLING SY	SURFACE COURSE, S9.5B TONS	ASPHALT BINDER FOR PLANT MIX TONS	INDUCTIVE LOOP LF
14CR.20881.11	Transylvania	1	SR-1540	FROM US 276 TO PVT CHANGE AT SR-1543	1	NO	NO	1.14	20		1,210	73	
TOTAL FOR MAP NO. 1								1.14			1,210	73	
14CR.20881.11	Transylvania	2	SR-1610 (CHESTNUT STREET)	FROM PVT.CHG..01 MILES SOUTH OF US 64 TO NEELY ROAD	1	NO	NO	0.22	19		224	13	
TOTAL FOR MAP NO. 2								0.22			224	13	
14CR.20881.11	Transylvania	3	SR-1546 (NEELY ROAD)	FROM OLD US 64 TO SR1611 PARKS STREET	1	NO	NO	0.7	20		757	45	
TOTAL FOR MAP NO. 3								0.7			757	45	
14CR.20881.11	Transylvania	4	SR-1611 (PARKS AVE.)	FROM SR-1546 TO SR-1612 (PARKVIEW DRIVE.)	2	NO	NO	0.16	18	1,690	157	9	
TOTAL FOR MAP NO. 4								0.16		1,690	157	9	
14CR.20881.11	Transylvania	5	SR-1612 (PARKVIEW DRIVE)	FROM SR-1611 TO US-276	2	NO	NO	0.24	18	2,534	236	14	200
TOTAL FOR MAP NO. 5								0.24		2,534	236	14	200
TOTAL FOR PROJ NO. 14CR.20881.11								2.46		4,224	2,584	154	200
GRAND TOTAL								2.46		4,224	2,584	154	200