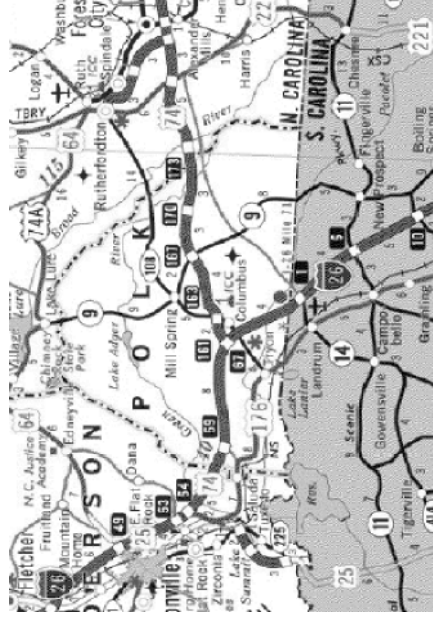
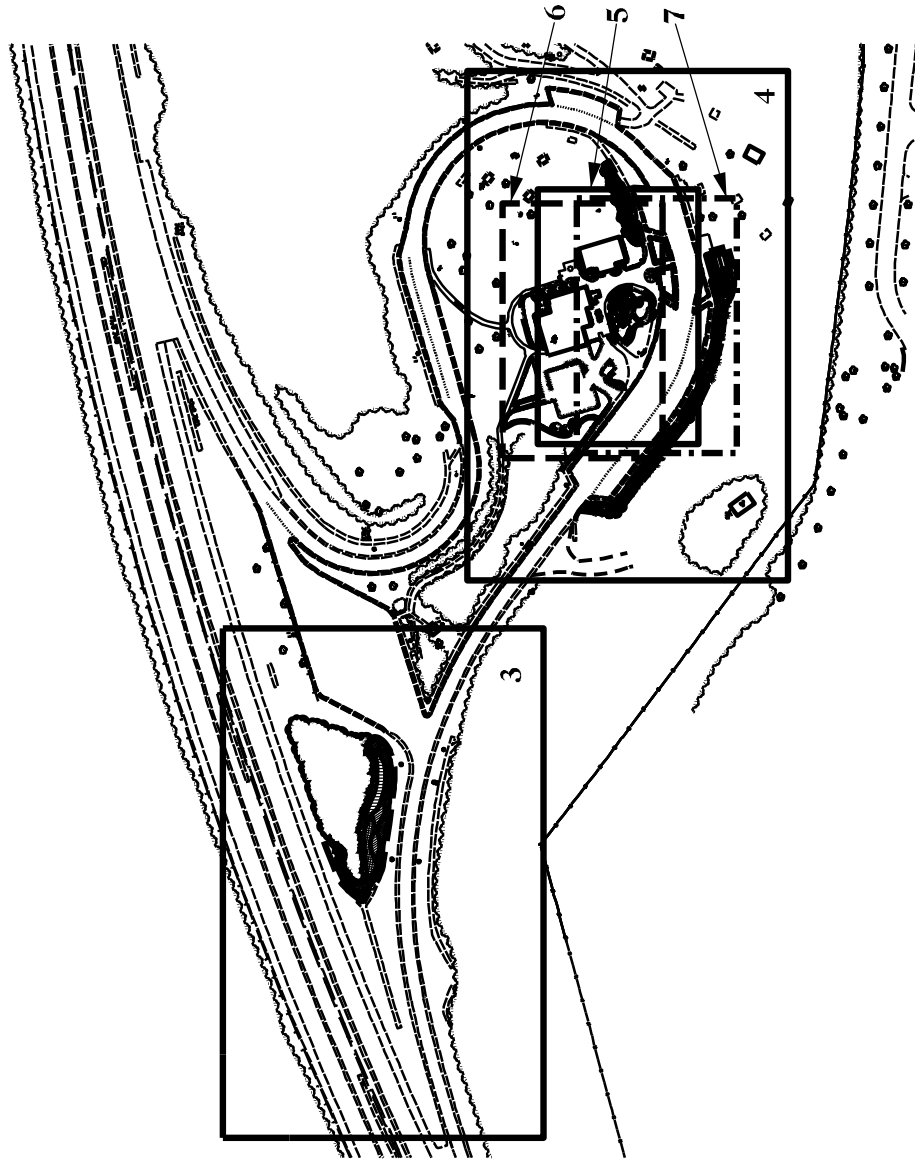
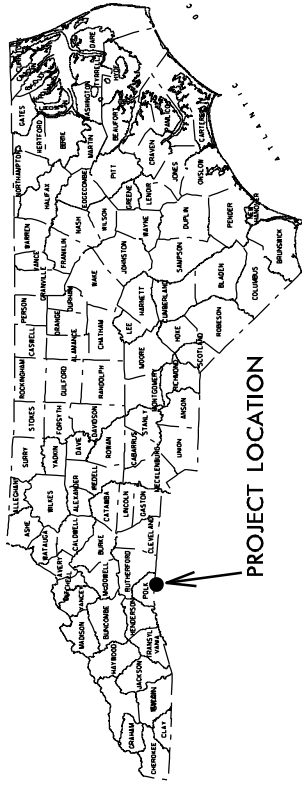




# PROPOSED HIGHWAY LANDSCAPE DEVELOPMENT PROJECT



PROJECT: Polk County - I-26 Welcome Center



## Summary of Quantities

Quantity	Key	Unit	Botanical Name	Common Name	Furnish	ASNS	Spacing
<b>Deciduous Ornamental Trees</b>							
5	CTW	Each	<i>Cercis canadensis</i> 'Texas White'	White Redbud	2-2 1/2' Cal. B&B. Single Straight Trunk, Matched Specimens	12.3	As shown
5	CEK	Each	<i>Chionodoxa virginiana</i> 'Emerald Knight'	Emerald Knight Fringe Tree	5-6' B&B or Cont., Heavy	12.3	As shown
8	CMW	Each	<i>Cornus kousa</i> 'Milky Way Select'	Milky Way Chinese Dogwood	5-6' B&B or Cont., Heavy	12.4	As shown
2	FWS	Each	<i>Fagus sylvatica</i> 'Purple Foliage Cultivar'	Purple European Beech	2-2 1/2' Cal. B&B. Straight Trunk	12.2	As shown
1	QA	Each	<i>Quercus alba</i>	White Oak	3.3 1/2' Cal. B&B. Straight Trunk	1.2.2	As shown
1	QN	Each	<i>Quercus nuttallii</i>	Nuttall Oak	2 1/2-3' Cal. B&B. Straight Trunk	1.2.1	As shown
<b>Deciduous Shrubs</b>							
94	FBS	Each	<i>Fothergilla major</i> 'Blue Shadow' PPA#15400	Blue Shadow Fothergilla	18-24" #3 Cont., Well Branched	2.2.2	3 OC
108	HSD	Each	<i>Hydrangea quercifolia</i> 'Sikes Dwarf'	Sikes Dwarf Oakleaf Hydrangea	18-24" #3 Cont., Well Branched	2.2.2	4 OC
19	LD	Each	<i>Lonicera viticifolia</i> 'Little Henry'	Little Henry Swastika	45-60" #3 Cont., Well Branched	2.2.2	As staked
2-44	RM	Each	<i>Rosa 'Wildebacken'</i> PPA#	Wild Rose	15-18" #3 Cont., Well Branched	5.6	5 OC
6	RR	Each	<i>Rosa radcan</i> PPA#15770	Pink Knock Out Rose	24-30" #3 Cont., Well Branched	5.6	5 OC
<b>Evergreen Shrubs</b>							
207	JK	Each	<i>Abelia x grandiflora</i> 'Kaleidoscope' P.P. #16,989	Kaleidoscope Abelia	18-24" #3 Cont., Well Branched	4.2.1	3 OC
1	JK	Each	<i>Camelia sasanqua</i> 'Capeonia'	Capeonia sasanqua Camelia	#15 Cont., Tree formed Specimen	4.2.5	As shown
10	HBV	Each	<i>Hyparicum x 'Blue Velvet'</i>	Blue Velvet St. John's Wort	18-24" #3 Cont., Well Branched	4.2.1	As shown
2	LCD	Each	<i>Leucodermis 'Soft Touch'</i>	Soft Touch Holly	18-24" #3 Cont., Well Branched	4.2.1	As staked
114	LCD	Each	<i>Loropetalum chinense</i> 'Daruma'	Daruma Loropetalum	18-24" #3 Cont., Well Branched	4.2.1	3 OC
42	VSB	Each	<i>Viburnum linceum</i> 'Spring Bouquet'	Spring Bouquet Viburnum	18-24" #3 Cont., Well Branched	4.2.4	5 OC
<b>Grasses</b>							
59	CA	Each	<i>Carex appalachica</i>	Appalachian Sedge	3.5 to 4' Pst	12.4	12' OC
50	CL	Each	<i>Chasmodon latifolium</i>	River Oats	#1 Cont., Fully Rooted into Cont.	12.4	2 OC
18	CL	Each	<i>Deschampsia cespitosa</i>	Tufted Hair Grass	3.5 to 4' Pst	12.4	12' OC
18	CL	Each	<i>Deschampsia leucosa</i>	Crisped Hair Grass	3.5 to 4' Pst	12.4	12' OC
117	MC	Each	<i>Muhlenbergia capillaris</i>	Pink Muhly Grass	#1 Cont., Fully Rooted into Cont.	12.4	3 OC
46	MC	Each	<i>Schizanthium scoparium</i> 'The Blues'	The Blues Little Bluestem	#1 Cont., Fully Rooted into Cont.	12.4	3 OC
<b>Ground Covers</b>							
207	JPN	Each	<i>Juniperus procumbens</i> 'Nana'	Dwarf Japanese Garden Juniper	18-24" #3 Cont. Min. 4 Runners	3.2.1	3 OC
<b>Perennials</b>							
52	AOR	Each	<i>Achillea millefolium</i> 'Dore's Rose'	Dore's Rose Yarrow	#1 Cont., Fully Rooted into Cont.	12.1.3	18' OC
38	AC	Each	<i>Asclepias incarnata</i> 'Crescentella'	Crescentella's Pink Swamp Milkweed	#1 Cont., Fully Rooted into Cont.	12.1.3	2 OC
9	AC	Each	<i>Helianthus x hybrid</i> 'Troy Prince'	Troy Prince	#1 Cont.	12.1.3	2 OC
22	AC	Each	<i>Heuchera amethystifolia</i>	Amethyst MIST Coral Bells	#1 Cont.	12.1.3	2 OC
25	LB	Each	<i>Leucanthemum x superbum</i> 'Becky'	Becky Shasta Daisy	#1 Cont., Fully Rooted into Cont.	12.1.3	2 OC
15	SAF	Each	<i>Rubus coccineus</i> 'Autumn Fire'	Autumn Fire Shrub	#1 Cont., Fully Rooted into Cont.	12.1.3	2 OC
54	SAF	Each	<i>Sedum spectabile</i> 'Autumn Fire'	Autumn Fire Stonecrop	#1 Cont., Fully Rooted into Cont.	12.1.3	2 OC
40	SLL	Each	<i>Solidago</i> 'Little Lemon'	Little Lemon Golden Rod	#1 Cont., Fully Rooted into Cont.	12.1.3	18' OC
39	WRC	Each	<i>Veronica x Royal Candies</i> PPA#	Spoke Speedwell	#1 Cont., Fully Rooted into Cont.	12.1.3	12' OC
9	WRC	Each	<i>Yucca filamentosa</i> 'Color Guard'	Color Guard Yucca	#3 Cont.	12.1.3	12' OC
<b>Other Items</b>							
503	CY	Much for Planting					
3	EA	Selective Tree Removal, 6"					
3	EA	Selective Tree Removal, 10"					
1	EA	Selective Tree Removal, 18"					

STATE OF  
**NORTH CAROLINA**  
DEPARTMENT OF TRANSPORTATION



LOCATION: I - 26 Welcome Center  
TYPE OF WORK: Landscape Planting  
COUNTY: Polk County

DIVISION 14

2004 American Standard for Nursery Stock  
2012 NCDOT STANDARD SPECIFICATIONS  
PREPARED IN THE OFFICE OF:  
NCDOT- ROADSIDE ENVIRONMENTAL UNIT  
LANDSCAPE DESIGN & DEVELOPMENT SECTION  
1557 MAIL SERVICE CENTER  
RALEIGH NC 27699 919-707-2920

T.I.P. #	STATE PROJECT W.B.S. #	SHEET #	SHEET # TOTAL
	3714.3.24	1	7
FED. PROJ. #	DESCRIPTION		
	I-26 Welcome Center Polk County		
			DIVISION
			14

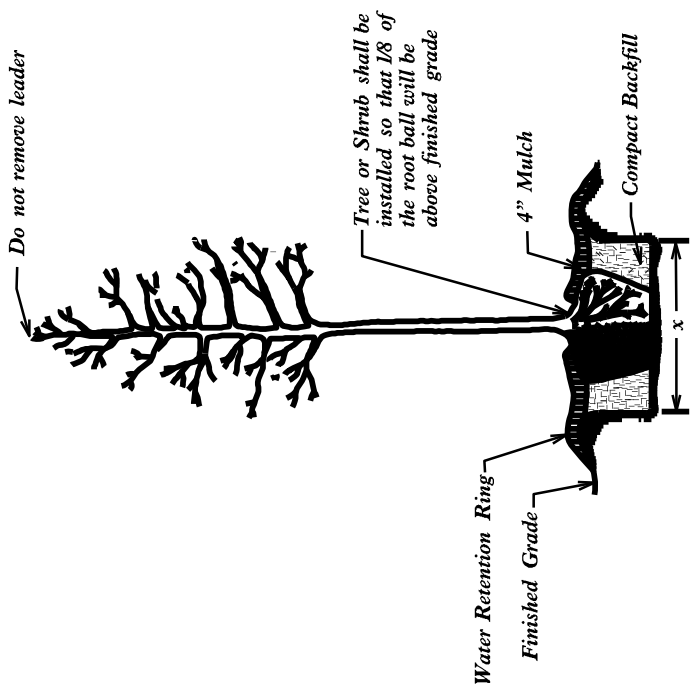
### CONVENTIONAL SYMBOLS

County Line.....	-----
City or Town Line.....	-----
Exist. Right of Way Line Marker.....	-----
Prop. Right of Way Line Marker (By Other).....	-----
Prop Right of Way Line Marker (By Contract).....	-----
Exist. Control of Access Line.....	-----
Prop. Control of Access Line.....	-----
Property Line.....	-----
Easement Line.....	-----
Slope Stake Line.....	-----
Exist. Fence.....	-----
Prop. Woven Wire Fence.....	-----
Prop. Chain Link Fence.....	-----
Exist. Road.....	-----
Prop. Road.....	-----
Guardrail.....	-----
Survey Line.....	-----
Denotes Line Equality.....	-----
Bridge.....	-----
Culvert.....	-----
Railroad.....	-----
Woods.....	-----
Exist. Telephone Pole.....	-----
Prop. Telephone Pole.....	-----
Tower Pole and Line.....	-----
Exist. Power Pole.....	-----
Prop. Power Pole.....	-----
Sanitary Sewer Line.....	-----
Water Line.....	-----
Gas Line.....	-----
Picnic Shelter.....	-----
Regeneration.....	-----
Reforestation.....	-----

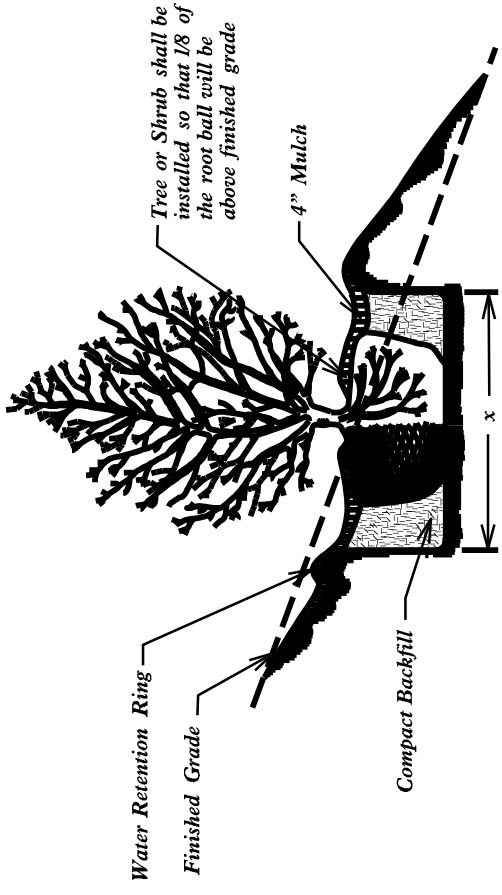
## INDEX OF L SHEETS:

- ..... Title, Description and Summary of Quantities
- ..... Planting Details
- ..... Planting Plan

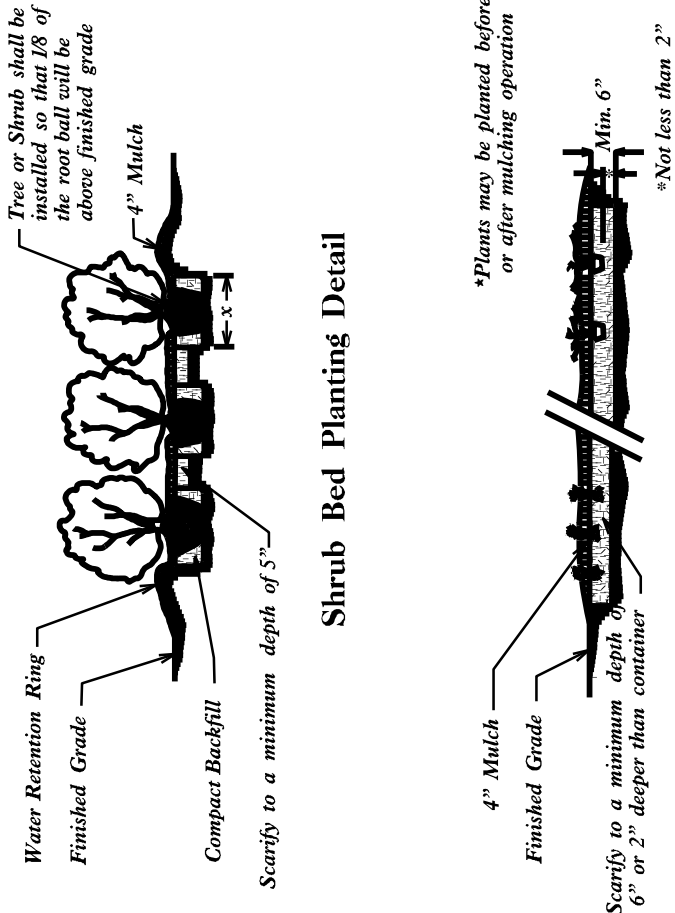
PREPARED BY: CSM  
PRELIMINARY DESIGN DATE: Oct. 10, 2012  
FINAL DESIGN DATE: Nov. 8, 2012



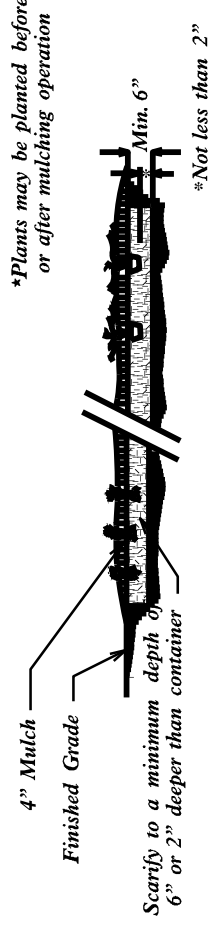
Tree or Shrub Planting Detail (Level Ground)



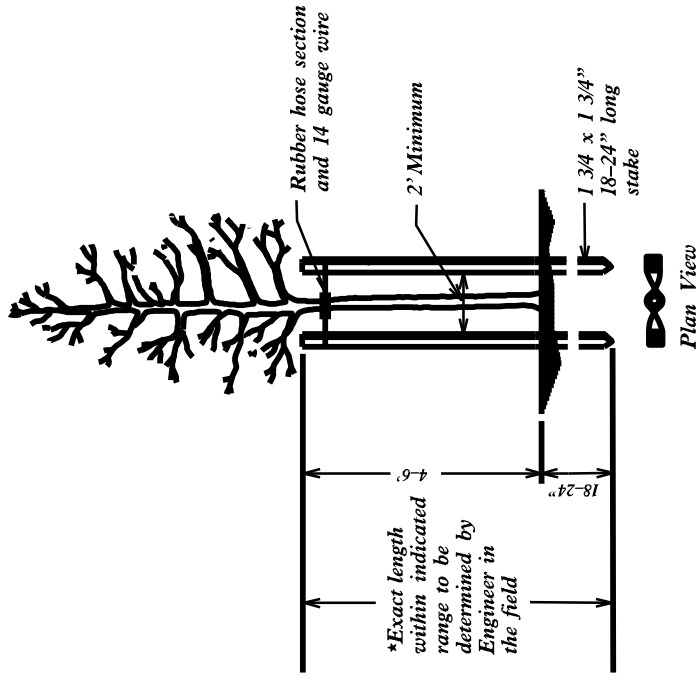
Tree or Shrub Planting Detail (Sloping Ground)



Shrub Bed Planting Detail

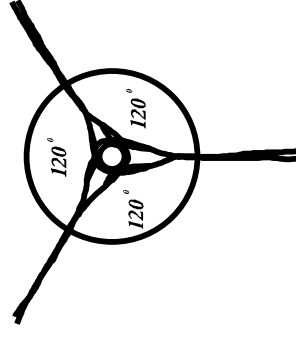


Groundcover Planting Detail

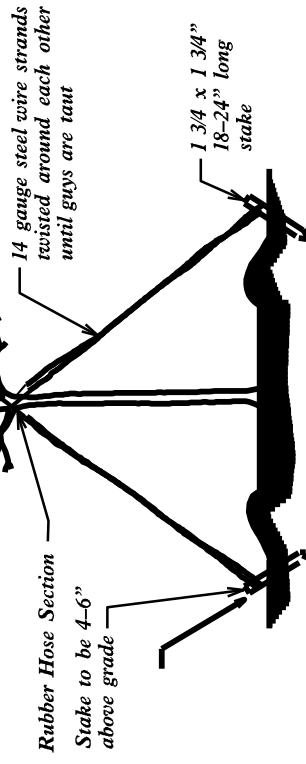


Staking Detail (for trees 6' to 10')

\* Utilize staking detail only if requested by the Engineer.

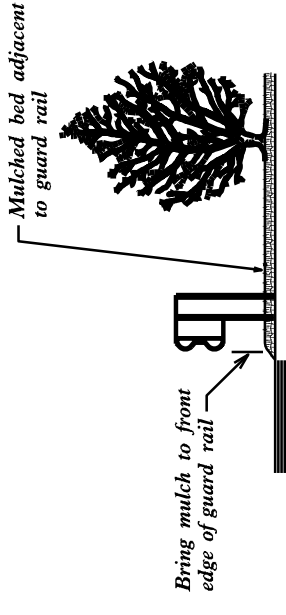


Guy Spacing Detail



Tree Guying Detail (for trees 10' or larger)

\* Utilize guying detail only if requested by the Engineer.



Bed / Guard Rail Detail

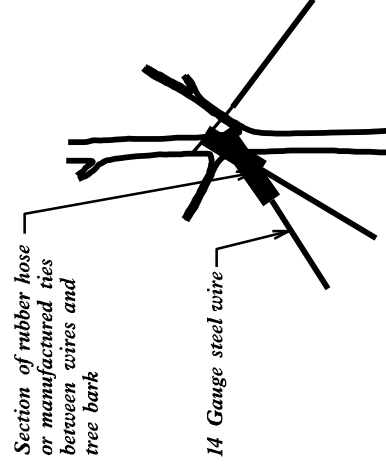
Notes:

Schedule for Plant Hole Size:  
 $X = 2 \times \text{diameter of the container or the root ball diameter}$

Fertilizer shall be applied at time of planting. Fertilizer shall be a slow release pellet or tablet. Formulation shall be approved by engineer in field. Rates shall be per manufacturer's recommendations and approved by engineer in field. Thoroughly mix with topsoil, backfill or scarified soil.

Cut and remove wire basket and remove burlap around top of root ball before backfilling.

When mulched bed is adjacent to guard rail run mulch to front edge of guard rail - see detail



Guy Tying Detail



NCDOT - ROADSIDE ENVIRONMENTAL UNIT  
 LANDSCAPE DESIGN & DEVELOPMENT  
 1557 MAIL SERVICE CENTER RALEIGH NC 27699-1557  
 PH: 919-733-2920 FAX: 919-733-9810  
 HTTP://WWW.NCDOT.ORG/DOH/OPERATIONS/DP-CHIEF.ENG/ROADSIDE/

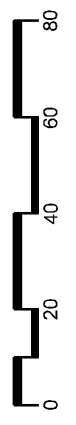
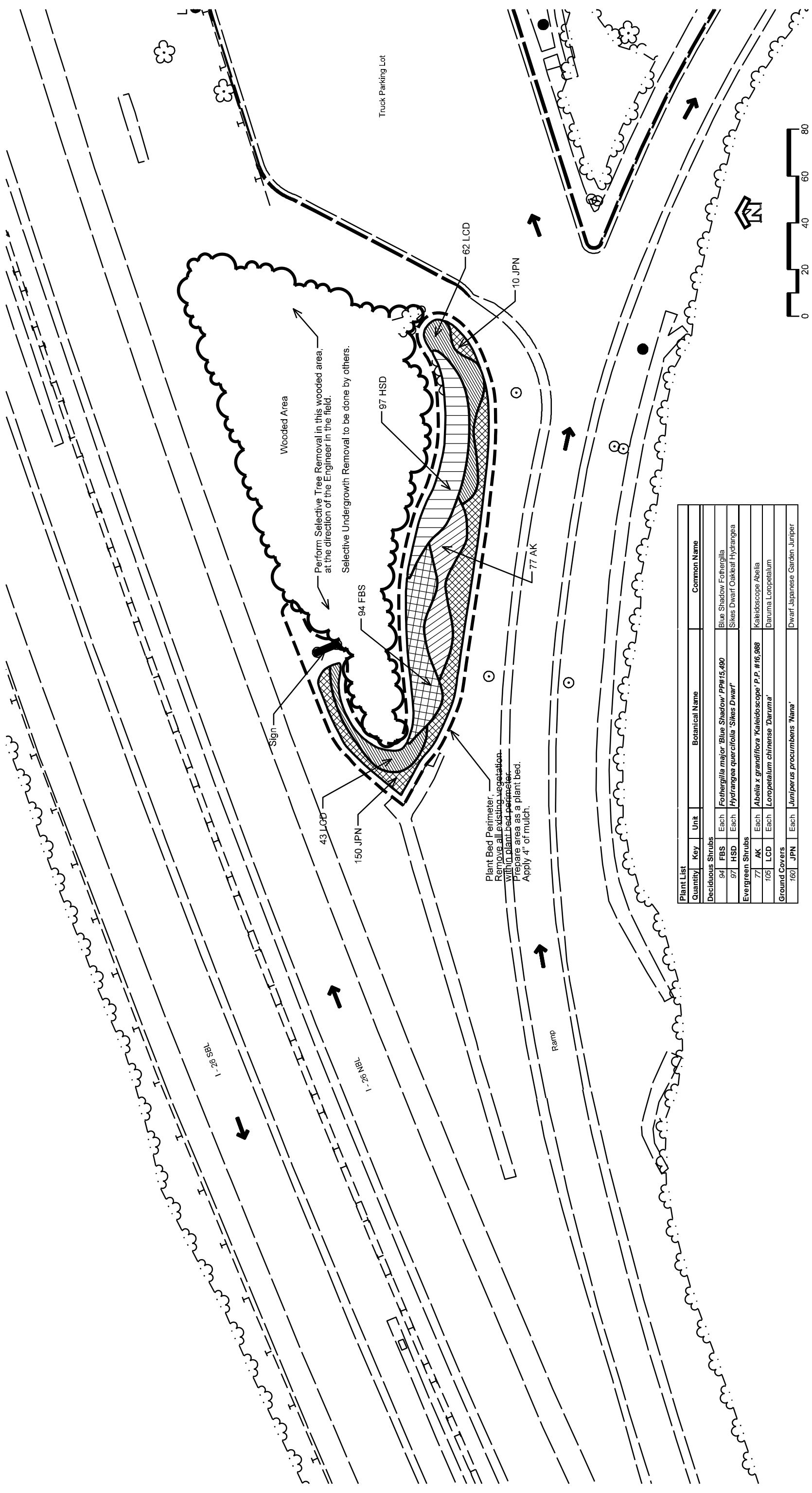
I-26 - WELCOME CENTER  
 POLK COUNTY  
 PROJECT #: 3714.3.24



LANDSCAPE DEVELOPMENT  
 PLANTING DETAILS

PREL DESIGN DATE: OCT. 10, 2012  
 FINAL DESIGN DATE: NOV. 8, 2012  
 REVISION DATE:  
 DIVISION AND COUNTY: DIVISION 14 - POLK COUNTY

SHEET NO.: 2  
 TOTAL SHEET NO.: 7



Plant List Quantity	Key	Unit	Botanical Name	Common Name
<b>Deciduous Shrubs</b>				
94	FBS	Each	<i>Fothergilla major</i> 'Blue Shadow' PPH#15,490	Blue Shadow Fothergilla
97	HSD	Each	<i>Hydrangea quercifolia</i> 'Sikes Dwarf'	Sikes Dwarf Oakleaf Hydrangea
<b>Evergreen Shrubs</b>				
77	AK	Each	<i>Abelia x grandiflora</i> 'Kalidoscope' P.P. #16,988	Kalidoscope Abelia
105	LCD	Each	<i>Loropetalum chinense</i> 'Daruma'	Daruma Loropetalum
<b>Ground Covers</b>				
160	JPN	Each	<i>Juniperus procumbens</i> 'Nana'	Dwarf Japanese Garden Juniper



PREL DESIGN DATE: OCT. 10, 2012  
 FINAL DESIGN DATE: NOV. 8, 2012  
 REVISION DATE:  
 DIVISION AND COUNTY: DIVISION 14 - POLK COUNTY

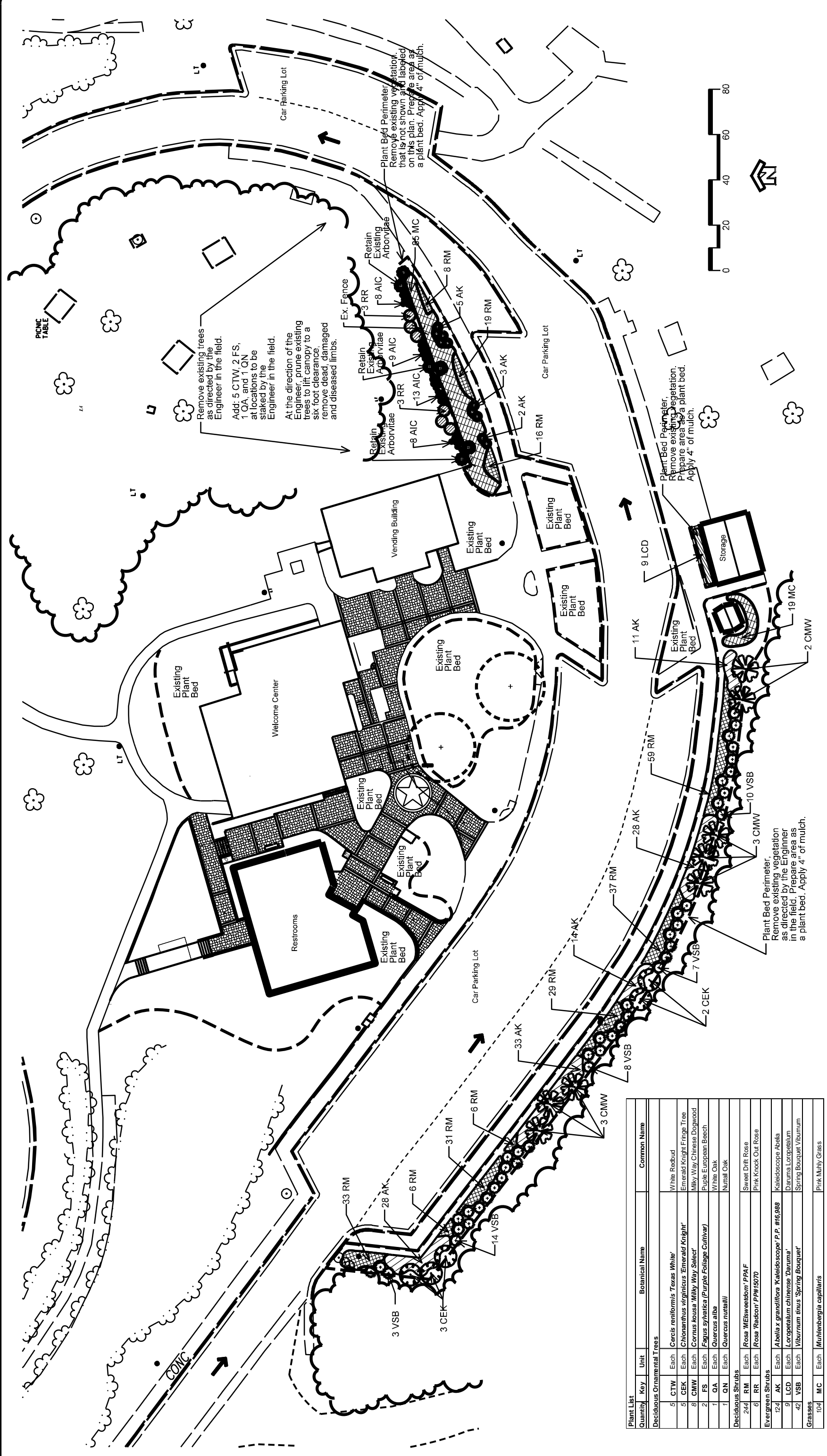
LANDSCAPE DEVELOPMENT  
 LANDSCAPE PLAN  
 ENTRANCE RAMP PLANT BED

COMING NOGAM  
 P.E. ENGINEER

I-26 - WELCOME CENTER  
 POLK COUNTY  
 PROJECT #: 374.3.24

NC DOT - ROADSIDE ENVIRONMENTAL UNIT  
 LANDSCAPE DESIGN & DEVELOPMENT  
 1557 MAIL SERVICE CENTER RALEIGH NC 27699-1557  
 PH: 919-733-2920 FAX: 919-733-9810  
 HTTP://WWW.NCDOT.ORG/DOH/OPERATIONS/DP\_CHIEF\_ENG/ROADSIDE/





Plant List Quantity	Key	Unit	Botanical Name	Common Name
<b>Deciduous Ornamental Trees</b>				
5	CTW	Each	<i>Cercis reniformis</i> 'Texas White'	White Redbud
5	CEK	Each	<i>Chionanthus virginicus</i> 'Emerald Knight'	Emerald Knight Fringe Tree
8	CMW	Each	<i>Cornus kousa</i> 'Milky Way Select'	Milky Way Chinese Dogwood
2	FS	Each	<i>Fagus sylvatica</i> ('Purple Foliage Cultivar')	Purple European Beech
1	QA	Each	<i>Quercus alba</i>	White Oak
1	QN	Each	<i>Quercus nuttallii</i>	Nuttall Oak
<b>Deciduous Shrubs</b>				
244	RM	Each	<i>Rosa</i> 'MELSweetdom' PPAF	Sweet Drift Rose
6	RR	Each	<i>Rosa</i> 'Radcon' PPH15070	Pink Knock Out Rose
<b>Evergreen Shrubs</b>				
124	AK	Each	<i>Abelia x grandiflora</i> 'Kaleidoscope' P.P. #16,988	Kaleidoscope Abelia
9	LCD	Each	<i>Loropetalum chinensis</i> 'Danuma'	Drauma Loropetalum
42	VSB	Each	<i>Viburnum tinus</i> 'Spring Bouquet'	Spring Bouquet Viburnum
<b>Grasses</b>				
104	MC	Each	<i>Muhlenbergia capillaris</i>	Pink Milky Grass

**NC DOT - ROADSIDE ENVIRONMENTAL UNIT**  
**LANDSCAPE DESIGN & DEVELOPMENT**  
 1557 MAIL SERVICE CENTER RALEIGH NC 27699-1557  
 PH: 919-733-2920 FAX: 919-733-9810  
[HTTP://WWW.NC DOT.ORG/DOH/OPERATIONS/DP\\_CHIEF\\_ENGR/ROADSIDE/](http://www.ncdot.org/doh/operations/dp_chief_engr/roadside/)

**I-26 - WELCOME CENTER**  
**POLK COUNTY**  
 PROJECT #: 3714.3.24

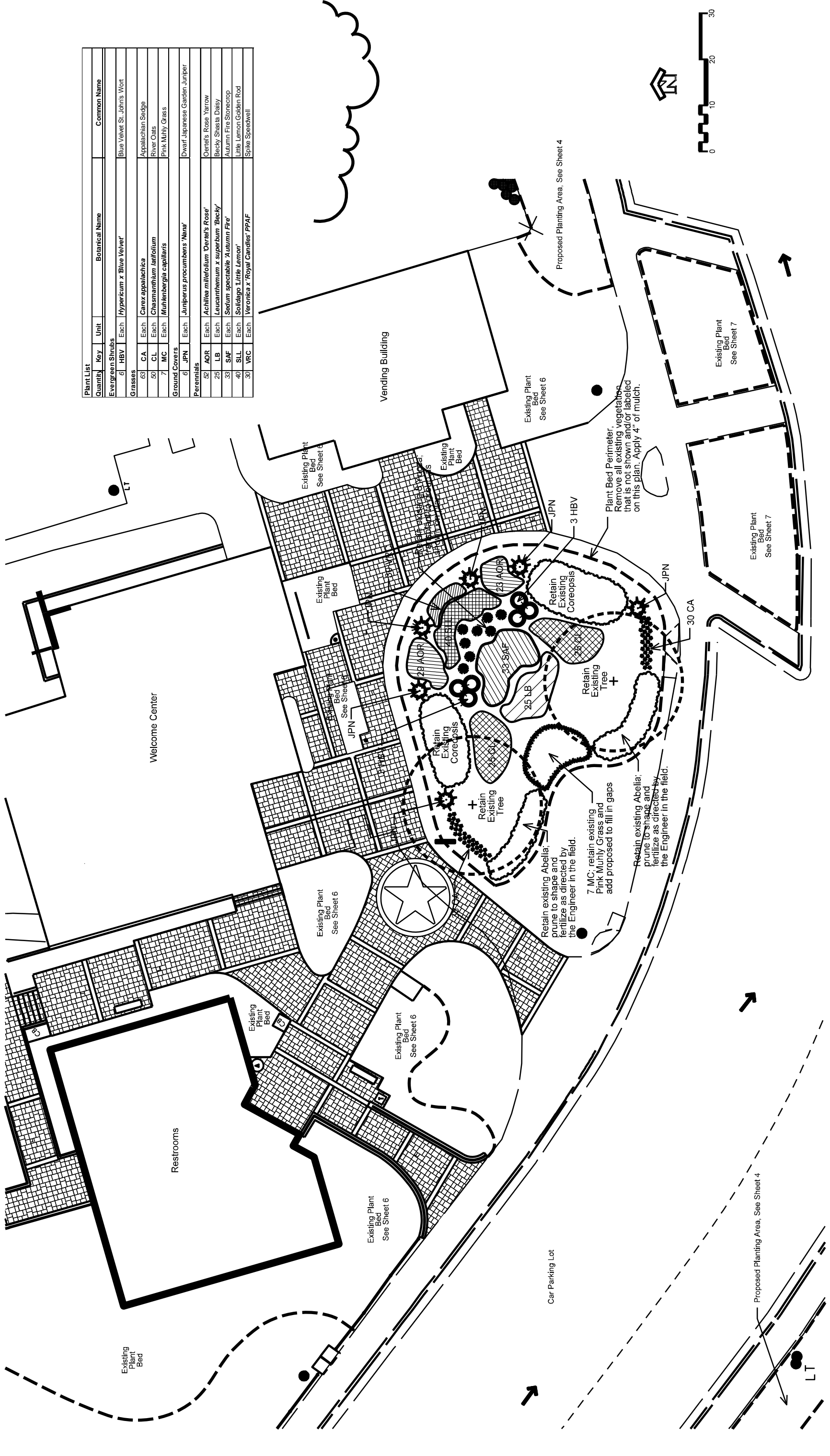
SHEET DESCRIPTION: **LANDSCAPE DEVELOPMENT**  
**LANDSCAPE PLAN**  
**CAR PARKING AREA BEDS**

PREL DESIGN DATE: **OCT. 10, 2012**  
 FINAL DESIGN DATE: **NOV. 8, 2012**  
 REVISION DATE:  
 DIVISION AND COUNTY: **DIVISION 14 - POLK COUNTY**

SHEET NO.: **4**

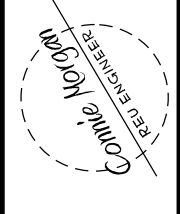
TOTAL SHEET NO.: **7**

Plant List	Quantity	Key	Unit	Botanical Name	Common Name
Evergreen Shrubs	6	HBV	Each	<i>Hypericum x 'Blue Velvet'</i>	Blue Velvet St. John's Wort
Grasses	63	CA	Each	<i>Carex appalachica</i>	Appalachian Sedge
	50	CL	Each	<i>Chasmanthium latifolium</i>	River Oats
	7	MC	Each	<i>Muhlenbergia capillaris</i>	Pink Muhly Grass
Ground Covers	6	JPN	Each	<i>Juniperus procumbens 'Nana'</i>	Dwarf Japanese Garden Juniper
Perennials	25	AOR	Each	<i>Achillea millefolium 'Oriele's Rose'</i>	Oriele's Rose Yarrow
	25	LB	Each	<i>Leucanthemum x superbum 'Becky'</i>	Becky Shasta Daisy
	33	SAF	Each	<i>Sedum spectabile 'Autumn Fire'</i>	Autumn Fire Stonecrop
	40	SLL	Each	<i>Solidago Little Lemon</i>	Little Lemon Golden Rod
	30	VRC	Each	<i>Veronica x 'Royal Cardies' PPAF</i>	Spike Speedwell



NCDOT - ROADSIDE ENVIRONMENTAL UNIT  
 LANDSCAPE DESIGN & DEVELOPMENT  
 1557 MAIL SERVICE CENTER RALEIGH NC 27699-1557  
 PH: 919-733-2920 FAX: 919-733-9810  
 HTTP://WWW.NCDOT.ORG/DOH/OPERATIONS/DP\_CHIEF\_ENGR/ROADSIDE/

I-26 - WELCOME CENTER  
 POLK COUNTY  
 PROJECT #: 374.3.24



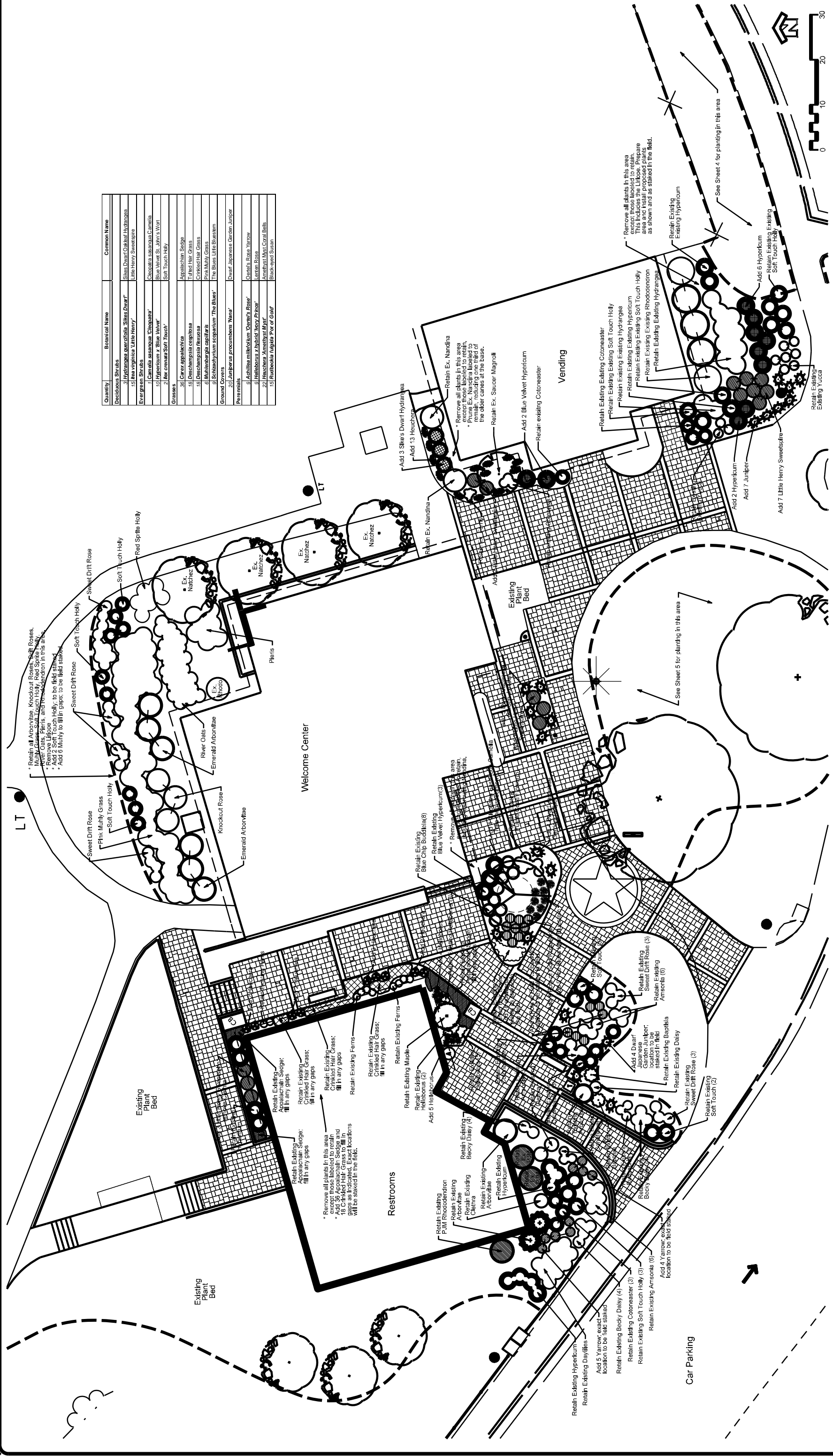
LANDSCAPE DEVELOPMENT  
 PLANTING PLAN  
 WELCOME CENTER  
 PLAZA AREA

PREL DESIGN DATE: OCT. 10, 2012  
 FINAL DESIGN DATE: NOV. 8, 2012  
 REVISION DATE:  
 DIVISION AND COUNTY: DIVISION 14 - POLK COUNTY



SHEET NO.: 5  
 TOTAL SHEET NO.: 7

Quantity	Botanical Name	Common Name
	<i>Hydrangea quercifolia</i> 'Sikes Dwarf'	Sikes Dwarf Oakleaf Hydrangea
	<i>Leucothoe virginica</i> 'Little Henry'	Little Henry Sweetgum
	<i>Chamaecyparis stricta</i>	Blue Velvet
	<i>Hypericum x Blue Velvet</i>	Blue Velvet St. John's Wort
	<i>Leucocoryza</i>	Soft Touch Holly
	<i>Carex appalachica</i>	Appalachian Sedge
	<i>Deschampsia cespitosa</i>	Tufted Hair Grass
	<i>Deschampsia flexuosa</i>	Crinkled Hair Grass
	<i>Muhlenbergia capillaris</i>	Pink Muhly Grass
	<i>Schizanthus scoparium</i> 'The Blues'	The Blues Little Bluestem
	<i>Juniperus procumbens</i> 'Nana'	Dwarf Japanese Garden Juniper
	<i>Achillea millefolium</i> 'Oxeye's Rose'	Oxeye's Rose Yarrow
	<i>Malva x hybrid</i> 'Merry Prince'	Merry Prince Malva
	<i>Heuchera 'Manicured Mint'</i>	Manicured Mint Coral Bell
	<i>Rubus 'Black-eyed Susan'</i>	Black-eyed Susan



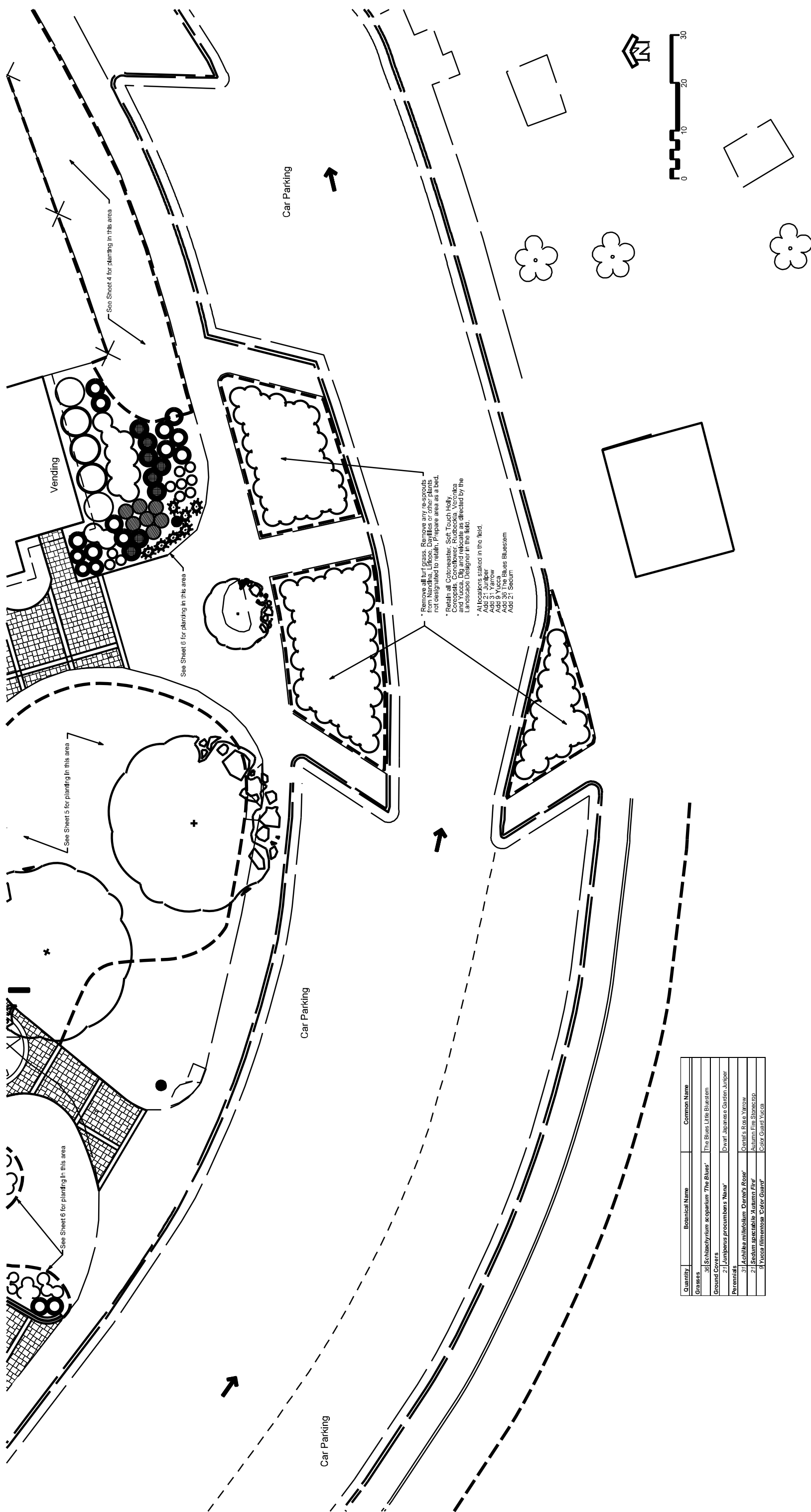
PREL DESIGN DATE:	OCT. 10, 2012
FINAL DESIGN DATE:	NOV. 8, 2012
REVISION DATE:	
DIVISION AND COUNTY:	DIVISION 14 - POLK COUNTY

**LANDSCAPE DEVELOPMENT**  
**PLANTING PLAN**  
**WELCOME CENTER**  
**PLAZA AREA**

**I-26 - WELCOME CENTER**  
**POLK COUNTY**  
 PROJECT #: 37H.3.24

NCDOT - ROADSIDE ENVIRONMENTAL UNIT  
 LANDSCAPE DESIGN & DEVELOPMENT  
 1557 MAIL SERVICE CENTER RALEIGH NC 27699-1557  
 PH: 919-733-2920 FAX: 919-733-9810  
 HTTP://WWW.NCDOT.ORG/DOH/OPERATIONS/DP\_CHIEF\_ENG/ROADSIDE/





\* Remove all turf grass. Remove any re-sprouts from Mandala, Liriod, Davilias or other plants not designated to retain. Prepare area as a bed.  
 \* Retain all Cotoneaster, Soft Touch Holly, Coreopsis, Coneflower, Rudbeckia, Veronica and Yucca. Dig and relocate as directed by the Landscape Designer in the field.  
 \* All locations staked in the field.  
 Add 2: Juniper  
 Add 3: Yarrow  
 Add 36: The Blues Bluessem  
 Add 2: Secum

See Sheet 4 for planting in this area

See Sheet 6 for planting in this area


See Sheet 5 for planting in this area

See Sheet 6 for planting in this area

Quantity	Botanical Name	Common Name
Grasses		
36	<i>Schizachyrium scoparium 'The Blues'</i>	The Blues Little Bluessem
Ground Covers		
2	<i>Juniperus procumbens 'Nana'</i>	Dwarf Japanese Garden Juniper
Perennials		
31	<i>Achillea millefolium 'Oerol's Rose'</i>	Oerol's Rose Yarrow
2	<i>Sedum spectabile 'Autumn Fire'</i>	Autumn Fire Stonecrop
8	<i>Yucca filamentosa 'Color Guard'</i>	Color Guard Yucca

**NC DOT - ROADSIDE ENVIRONMENTAL UNIT**  
**LANDSCAPE DESIGN & DEVELOPMENT**  
 1557 MAIL SERVICE CENTER RALEIGH NC 27699-1557  
 PH: 919-733-2920 FAX: 919-733-9810  
[HTTP://WWW.NCDOT.ORG/DOH/OPERATIONS/DP\\_CHIEF\\_ENG/ROADSIDE/](http://www.ncdot.org/doh/operations/dp_chief_eng/roadside/)

**I-26 - WELCOME CENTER**  
**POLK COUNTY**  
 PROJECT #: 374.3.24



Corine Nozom  
 P.E. ENGINEER

**LANDSCAPE DEVELOPMENT**  
**PLANTING PLAN**  
**WELCOME CENTER**  
**PLAZA AREA**

PREL DESIGN DATE: **OCT. 10, 2012**  
 FINAL DESIGN DATE:  
 REVISION DATE: **NOV. 8, 2012**  
 DIVISION AND COUNTY: **DIVISION 14 - POLK COUNTY**

SHEET NO.: **7**  
 TOTAL SHEET NO.: **7**