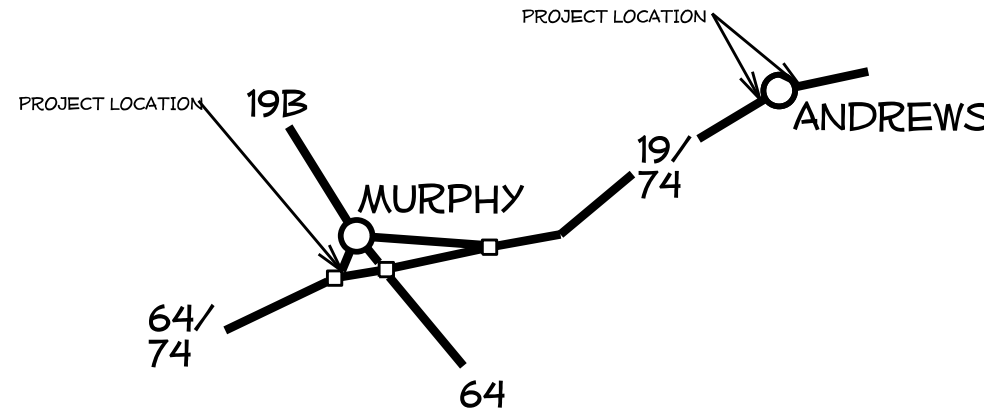
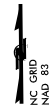
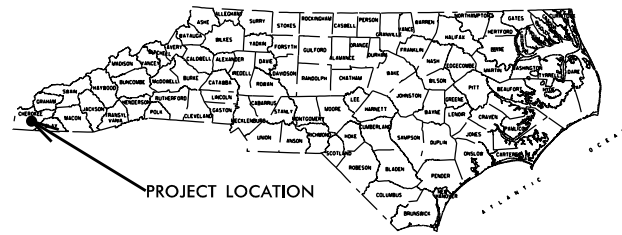




PROPOSED HIGHWAY LANDSCAPE DEVELOPMENT PROJECT



T.I.P. #	STATE PROJECT W.B.S. #	SHEET #	SHEET # TOTAL
-	3714.3 (.23 and .11)	L1	7
FED. PROJ. #	DESCRIPTION	DIVISION	
-	Enhancement	14	



Summary of Quantities

Des	Sec	Qty	Unit	Botanical Name	Common Name	Size	Caliper	Furnish	A.S.N.S.	Remarks
US64 at Hiwassee Street, Murphy										
L	1670	60	EA	<i>Abelia grandiflora x Kaleidoscope</i>	Kaleidoscope Abelia	15-18"		#3 cont. min.	4.2.3	5' o.c. nom.
L	1670	58	EA	<i>Juniperus chinensis 'Daub's Frosted'</i>	Daub's Frosted Juniper	15-18"		#3 cont. min.	3.2.2	5' o.c. nom.
L	1671	50	EA	<i>Rosa 'Meijocos'</i>	Pink Drift Rose	15-18"		#3 cont. min.	5.6	5' o.c. nom.
L	1670	250	EA	<i>Hemerocallis Gertrude Condon'</i>	Gertrude Condon Daylily			#3 cont. min.	12.2.3	30" o.c.
2729	1670	73	CY	Mulch for Planting						
US19-74 Median at Main St., Andrews										
L	1670	120	EA	<i>Abelia x 'Rose Creek'</i>	Rose Creek Abelia	15-18"		#3 cont.	4.2.4	as shown
L	1670	176	EA	<i>Buddleia 'Blue Chip'</i>	Blue Chip Butterfly Bush	12-15"		#3 cont.	4.2.1	as shown
L	1670	400	EA	<i>Hemerocallis 'Happy Returns'</i>	Happy Returns Daylily			2-3 fan	12.2.3	24" o.c.
L	1670	312	EA	<i>Hypericum 'Sungold'</i>	Sungold Hypericum	15-18"		#3 cont.	2.2.2	as shown
L	1670	600	EA	<i>Iris siberica 'Caesar's Brother'</i>	Caesar's Brother Siberian Iris			1-2 fan, #4 SP cont.	12.2.5	18" o.c.
L	1670	120	EA	<i>Juniperus chinensis Daub's Frosted'</i>	Daub's Frosted Juniper	15-18"		#3 cont.	3.2.2	as shown
L	1670	9	EA	<i>Thuja occidentalis 'Emerald Green'</i>	Emerald Green Arborvitae	7-8'		B&B	3.2.4	as shown
2729	1670	104	CY	Mulch for Planting						
US19-74 Median at US19 Business, Andrews										
L	1670	164	EA	<i>Abelia x Kaleidoscope</i>	Kaleidoscope Abelia	15-18"		#3 cont.	4.2.3	5' o.c. nom.
L	1670	2	EA	<i>Acer rubrum 'October Glory'</i>	October Glory Red Maple	12-14'	3-3 1/2"	B&B	1.2.2	as shown
L	1670	32	EA	<i>Buddleia 'Blue Chip'</i>	Blue Chip Butterfly Bush	12-15"		#3 cont.	4.2.1	4' o.c. nom.
L	1670	2400	EA	<i>Hemerocallis 'Buttered Popcom'</i>	Buttered Popcorn Daylily			#1 cont.	12.2.3	24" o.c.
L	1670	64	EA	<i>Hydrangea quercifolia</i>	Oakleaf Hydrangea	18-24"		#3 cont.	2.2.3	6' o.c. nom.
L	1670	1200	EA	<i>Iris siberica 'Caesar's Brother'</i>	Caesar's Brother Siberian Iris			1-2 fan, #4 SP cont.	12.2.5	18" o.c.
L	1670	56	EA	<i>Juniperus chinensis Daub's Frosted'</i>	Daub's Frosted Juniper	15-18"		#3 cont.	3.2.2	6' o.c. nom.
L	1670	117	EA	<i>Rosa Meijocos</i>	Pink Drift Rose	15-18"		#3 cont.	5.2	5' o.c. nom.
L	1670	120	EA	<i>Rosa Raddtko</i>	Red Knockout Rose	15-18"		#3 cont.	5.2	5' o.c. nom.
SP	1670	3	EA	Grind Stumps						
2729	1670	340	CY	Mulch for Planting						

CONVENTIONAL SYMBOLS

County Line	-----
City or Town Line	-----
Exist. Right of Way Line Marker	-----▲-----
Prop. Right of Way Line Marker (By Others)	-----▲-----
Prop. Right of Way Line Marker (By Contract)	-----▲-----
Exist. Control of Access Line	-----⊕-----
Prop. Control of Access Line	-----⊕-----
Property Line	-----
Easement Line	-----
Slope Stake Line	-----
Exist. Fence	-----
Prop. Woven Wire Fence	-----
Prop. Chain Link Fence	-----
Exist. Road	-----
Prop. Road	-----
Guardrail	-----
Survey Line	-----
Denotes Line Equality	-----
Bridge	-----
Culvert	-----
Railroad	-----
Woods	-----
Exist. Telephone Pole	-----
Prop. Telephone Pole	-----
Tower Pole and Line	-----
Exist. Power Pole	-----
Prop. Power Pole	-----
Sanitary Sewer Line	-----
Water Line	-----
Gas Line	-----
Picnic Shelter	-----
Regeneration	-----
Reforestation	-----

INDEX OF L SHEETS:

L 1	... TITLE, DESCRIPTION, LOCATION
L 2	... PLANTING DETAILS
L 3-7	... PLANTING PLANS

PREPARED BY: DW DATE: 10/31/2013

REVISIONS

DATE	DESCRIPTION

PROJECT: LANDSCAPE PLANTING



STATE OF
NORTH CAROLINA
DEPARTMENT OF TRANSPORTATION

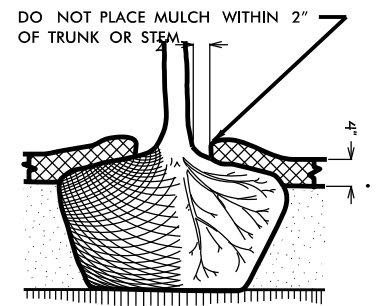
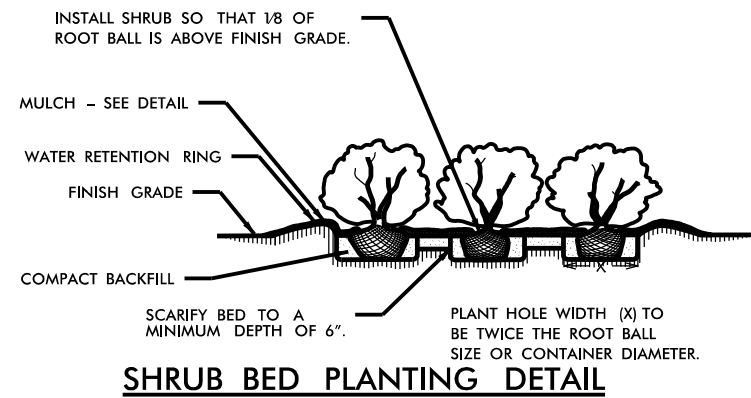
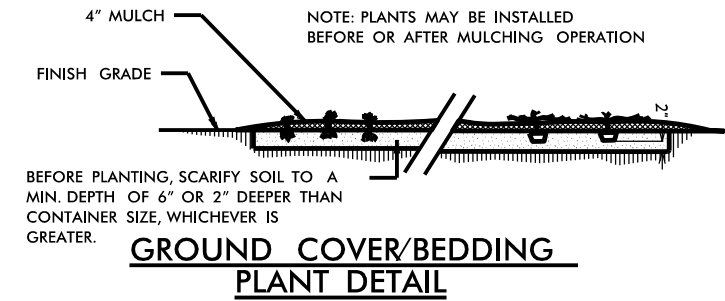
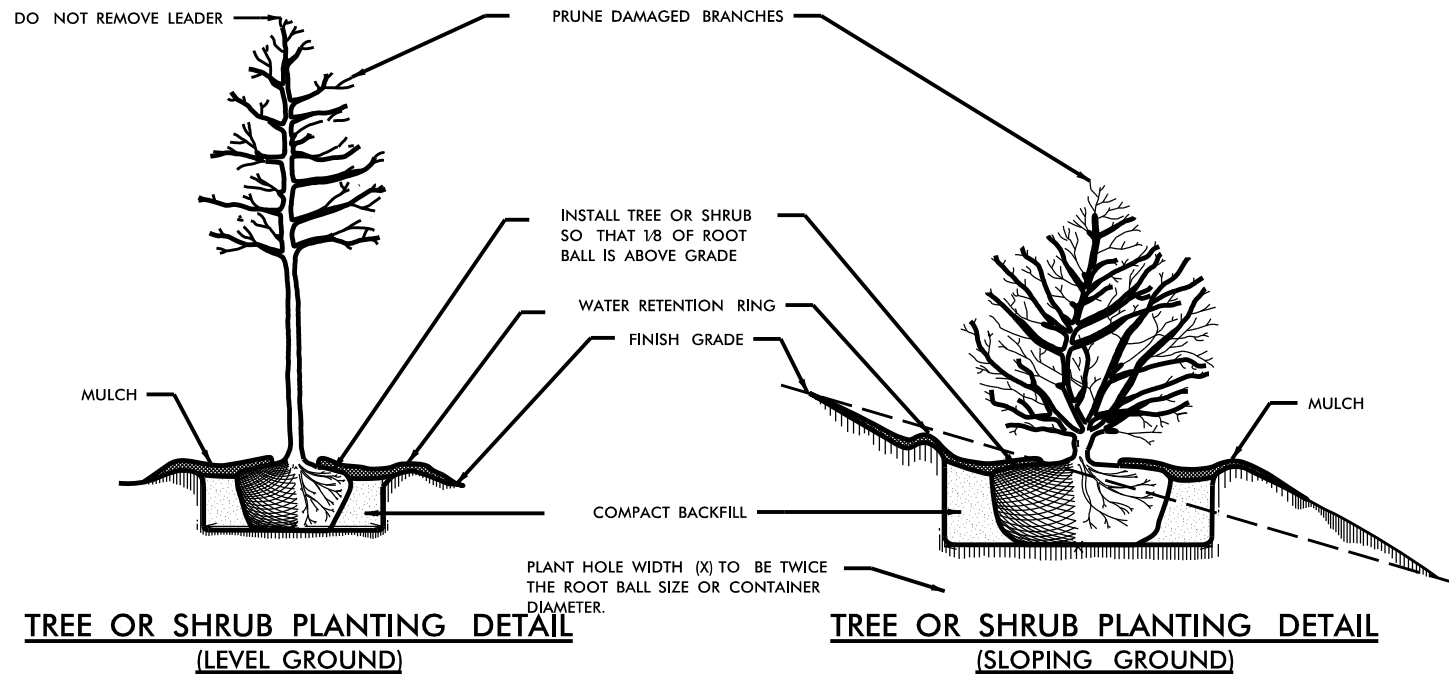
LOCATION: US 74-64 Murphy - Andrews

TYPE of WORK: Landscape Planting

COUNTY: Cherokee County

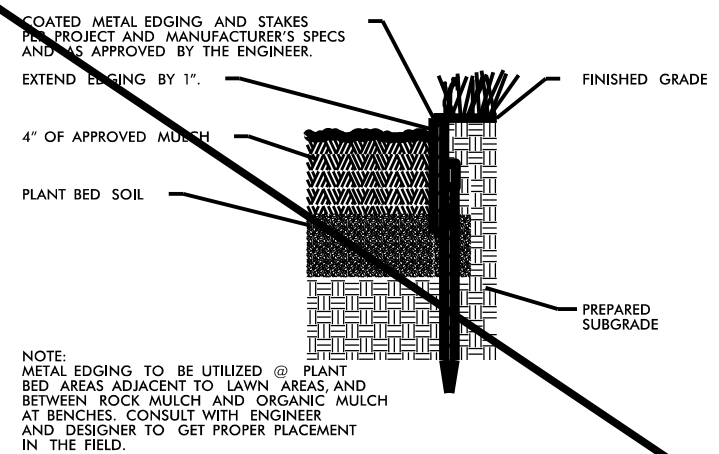
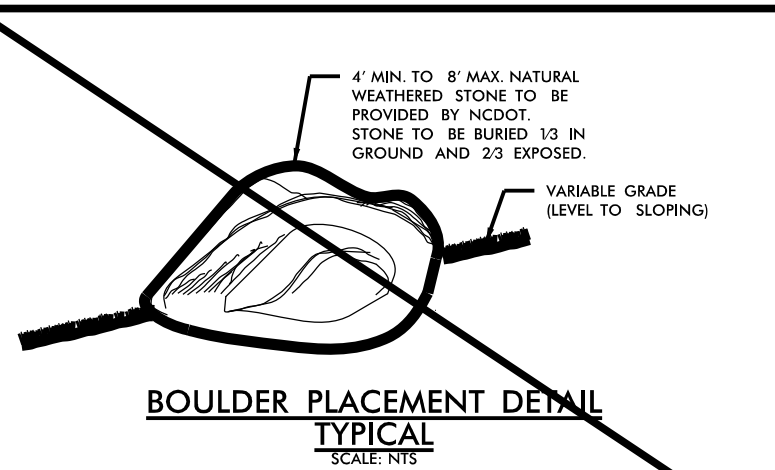
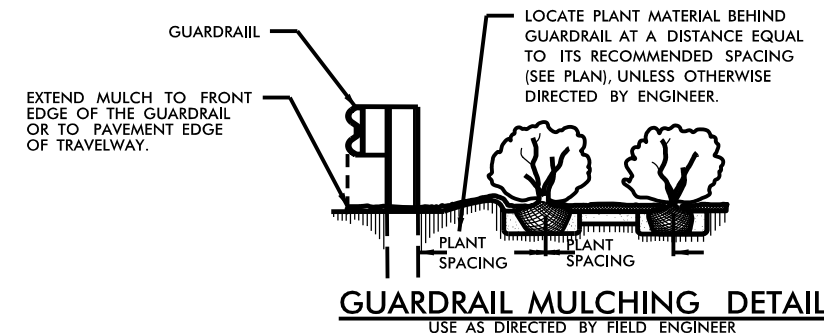
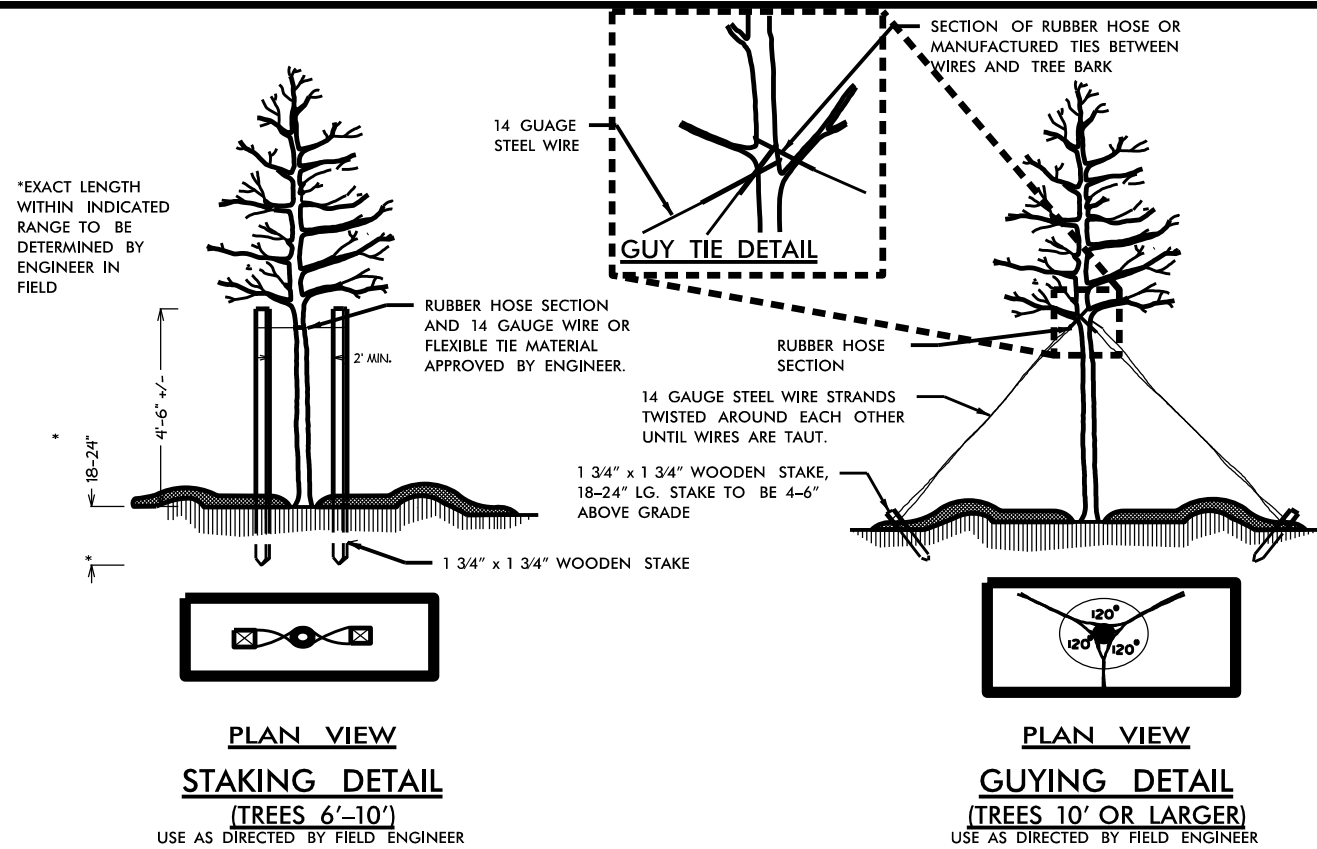
D Wilson

2004 American Standard for Nursery Stock
2012 NCDOT STANDARD SPECIFICATIONS
PREPARED IN THE OFFICE OF:
NCDOT- ROADSIDE ENVIRONMENTAL UNIT
LANDSCAPE DESIGN & DEVELOPMENT SECTION
1557 MAIL SERVICE CENTER
RALEIGH NC 27699 919-707-2920



NOTES:

- ✦ SCHEDULE FOR PLANT HOLE SIZE: PLANT HOLE WIDTH (X) TO BE TWICE THE ROOT BALL SIZE OR CONTAINER DIAMETER.
- ✦ SEE STANDARD SPECIFICATIONS FOR PLANT BED FUMIGATION AND HERBICIDAL TREATMENT.
- ✦ APPLY FERTILIZER AT PLANTING TIME IN THE FORM OF A SLOW RELEASE PELLET OR TABLET. APPLY AT RATE RECOMMENDED BY MANUFACTURER. BOTH RATE AND FORMULATION MUST BE APPROVED BY FIELD ENGINEER PRIOR TO APPLICATION.
- ✦ REMOVE WIRE BASKET AND FOLD BURLAP BACK FROM TOP OF ROOT BALL BEFORE BACKFILLING IS COMPLETE.
- ✦ ALL PRUNING TO FOLLOW STANDARD ARBORICULTURAL PRACTICES AS SPECIFIED BY INTERNATIONAL SOCIETY OF ARBORICULTURE.
- ✦ DO NOT ATTEMPT TO STRAIGHTEN A TREE THAT HAS BEEN PLANTED AT AN ANGLE WITH THE USE OF STAKING OR GUYING. DIG TREE AND REPLANT TO UPRIGHT POSITION.



NCDOT - ROADSIDE ENVIRONMENTAL UNIT
 LANDSCAPE DESIGN & DEVELOPMENT
 1557 MAIL SERVICE CENTER, RALEIGH, NC 27699-1557
 PH: 919-707-2920 FAX: 919-715-2554
 HTTP://WWW.NCDOT.ORG/DOH/OPERATIONS/DP_CHIEF_ENG/ROADSIDE/

US 74/64
 Cherokee County, Murphy-Andrews
 W060: 3714.3(.23, .11)

REV ENGINEER :

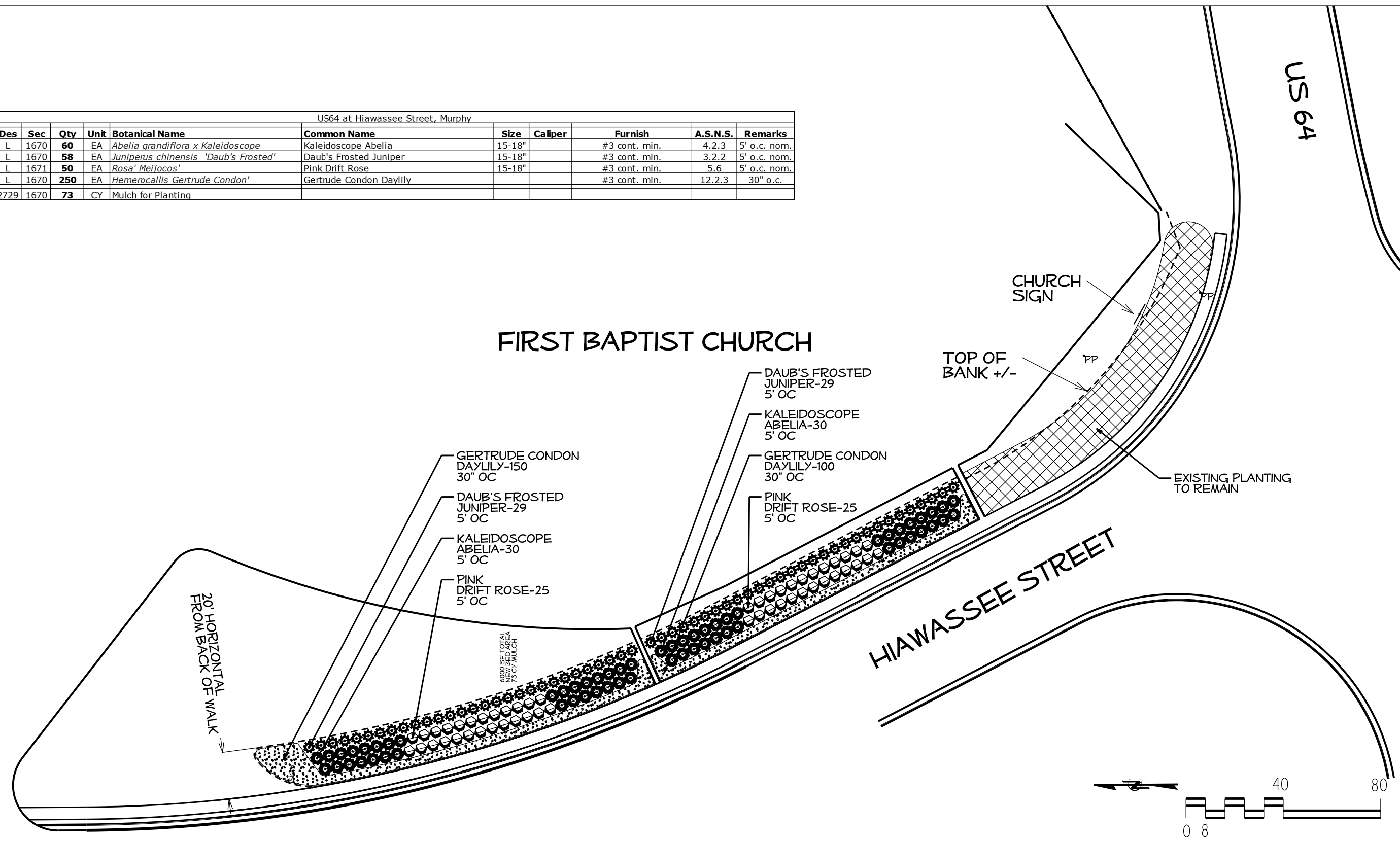
SHEET DESCRIPTION:	Planting Details

PREL DESIGN DATE:	5 / 17 / 2013
CHECKED BY & DATE:	
FINAL DESIGN DATE:	10 / 31 / 2013



SHEET NO :	2
TOTAL SHEET NO :	7

US64 at Hiwassee Street, Murphy										
Des	Sec	Qty	Unit	Botanical Name	Common Name	Size	Caliper	Furnish	A.S.N.S.	Remarks
L	1670	60	EA	<i>Abelia grandiflora x Kaleidoscope</i>	Kaleidoscope Abelia	15-18"		#3 cont. min.	4.2.3	5' o.c. nom.
L	1670	58	EA	<i>Juniperus chinensis 'Daub's Frosted'</i>	Daub's Frosted Juniper	15-18"		#3 cont. min.	3.2.2	5' o.c. nom.
L	1671	50	EA	<i>Rosa 'Meijococ'</i>	Pink Drift Rose	15-18"		#3 cont. min.	5.6	5' o.c. nom.
L	1670	250	EA	<i>Hemerocallis Gertrude Condon'</i>	Gertrude Condon Daylily			#3 cont. min.	12.2.3	30" o.c.
2729	1670	73	CY	Mulch for Planting						



NCDOT - ROADSIDE ENVIRONMENTAL UNIT
 LANDSCAPE DESIGN & DEVELOPMENT
 1557 MAIL SERVICE CENTER, RALEIGH, NC 27699-1557
 PH: 919-707-2920 FAX: 919-715-2554
[HTTP://WWW.NCDOT.ORG/DOH/OPERATIONS/DP_CHIEF_ENG/ROADSIDE/](http://www.ncdot.org/DOH/OPERATIONS/DP_CHIEF_ENG/ROADSIDE/)

US 74/64 Hiwassee Street
Cherokee County, Murphy
W060: 3714.3.23

REV ENGINEER :

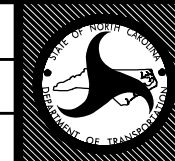
SHEET DESCRIPTION:

Planting Details

PREL DESIGN DATE: **5 /17 /2013**

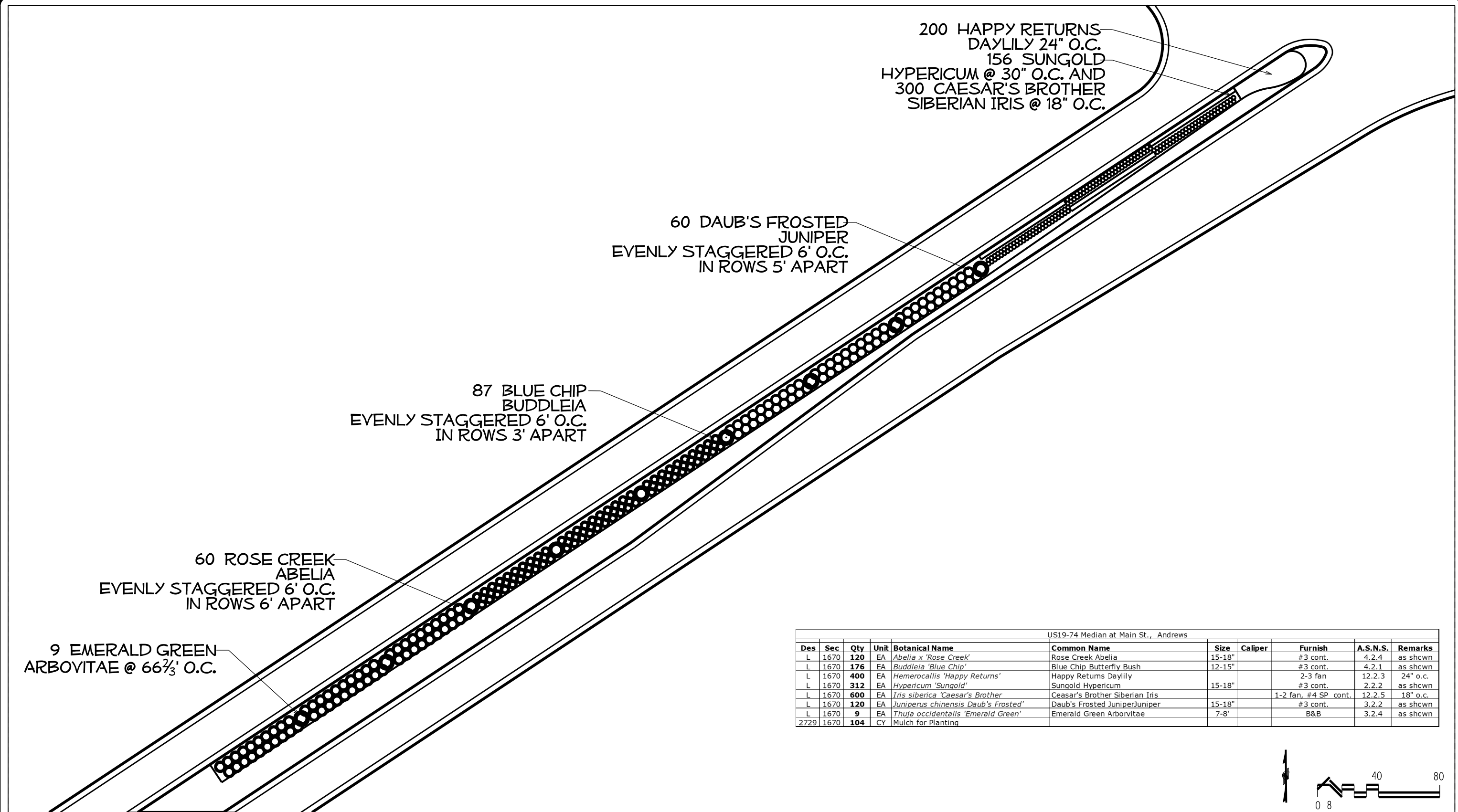
CHECKED BY & DATE :

FINAL DESIGN DATE: **10 /31 /2013**



SHEET NO : **3**

TOTAL SHEET NO : **7**



200 HAPPY RETURNS
 DAYLILY 24" O.C.
 156 SUNGOLD
 HYPERICUM @ 30" O.C. AND
 300 CAESAR'S BROTHER
 SIBERIAN IRIS @ 18" O.C.

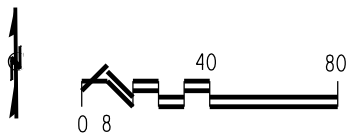
60 DAUB'S FROSTED
 JUNIPER
 EVENLY STAGGERED 6' O.C.
 IN ROWS 5' APART

87 BLUE CHIP
 BUDDLEIA
 EVENLY STAGGERED 6' O.C.
 IN ROWS 3' APART

60 ROSE CREEK
 ABELIA
 EVENLY STAGGERED 6' O.C.
 IN ROWS 6' APART

9 EMERALD GREEN
 ARBOVITAE @ 66 $\frac{2}{3}$ ' O.C.

US19-74 Median at Main St., Andrews										
Des	Sec	Qty	Unit	Botanical Name	Common Name	Size	Caliper	Furnish	A.S.N.S.	Remarks
L	1670	120	EA	<i>Abelia x 'Rose Creek'</i>	Rose Creek Abelia	15-18"		#3 cont.	4.2.4	as shown
L	1670	176	EA	<i>Buddleia 'Blue Chip'</i>	Blue Chip Butterfly Bush	12-15"		#3 cont.	4.2.1	as shown
L	1670	400	EA	<i>Hemerocallis 'Happy Returns'</i>	Happy Returns Daylily			2-3 fan	12.2.3	24" o.c.
L	1670	312	EA	<i>Hypericum 'Sungold'</i>	Sungold Hypericum	15-18"		#3 cont.	2.2.2	as shown
L	1670	600	EA	<i>Iris siberica 'Caesar's Brother'</i>	Caesar's Brother Siberian Iris			1-2 fan, #4 SP cont.	12.2.5	18" o.c.
L	1670	120	EA	<i>Juniperus chinensis Daub's Frosted'</i>	Daub's Frosted Juniper/Juniper	15-18"		#3 cont.	3.2.2	as shown
L	1670	9	EA	<i>Thuja occidentalis 'Emerald Green'</i>	Emerald Green Arborvitae	7-8'		B&B	3.2.4	as shown
2729	1670	104	CY	Mulch for Planting						



NCDOT - ROADSIDE ENVIRONMENTAL UNIT
 LANDSCAPE DESIGN & DEVELOPMENT
 1557 MAIL SERVICE CENTER, RALEIGH, NC 27699-1557
 PH: 919-707-2920 FAX: 919-715-2554
[HTTP://WWW.NCDOT.ORG/DOH/OPERATIONS/DP_CHIEF_ENG/ROADSIDE/](http://www.ncdot.org/DOH/OPERATIONS/DP_CHIEF_ENG/ROADSIDE/)

US 74
Cherokee County, Andrews
W060: 3714.3.11

REV ENGINEER :

Planting Plan
US 74 at US 19 Bus.
West of Andrews

PREL DESIGN DATE: **5 /17 /2013**
 CHECKED BY & DATE :
 FINAL DESIGN DATE: **10 /31 /2013**



SHEET NO : **4**
 TOTAL SHEET NO : **7**

US19-74 Median at Main St., Andrews										
Des	Sec	Qty	Unit	Botanical Name	Common Name	Size	Caliper	Furnish	A.S.N.S.	Remarks
L	1670	120	EA	<i>Abelia x 'Rose Creek'</i>	Rose Creek Abelia	15-18"		#3 cont.	4.2.4	as shown
L	1670	176	EA	<i>Buddleia 'Blue Chip'</i>	Blue Chip Butterfly Bush	12-15"		#3 cont.	4.2.1	as shown
L	1670	400	EA	<i>Hemerocallis 'Happy Returns'</i>	Happy Returns Daylily			2-3 fan	12.2.3	24" o.c.
L	1670	312	EA	<i>Hypericum 'Sungold'</i>	Sungold Hypericum	15-18"		#3 cont.	2.2.2	as shown
L	1670	600	EA	<i>Iris siberica 'Caesar's Brother'</i>	Caesar's Brother Siberian Iris			1-2 fan, #4 SP cont.	12.2.5	18" o.c.
L	1670	120	EA	<i>Juniperus chinensis 'Daub's Frosted'</i>	Daub's Frosted Juniper	15-18"		#3 cont.	3.2.2	as shown
L	1670	9	EA	<i>Thuja occidentalis 'Emerald Green'</i>	Emerald Green Arborvitae	7-8'		B&B	3.2.4	as shown
2729	1670	104	CY	Mulch for Planting						

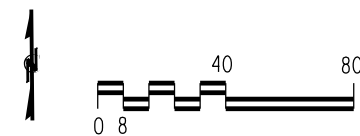
156 SUNGOLD
HYPERICUM @ 30" O.C. AND
300 CAESAR'S BROTHER
SIBERIAN IRIS @ 18" O.C.

200 HAPPY RETURNS
DAYLILY 24" O.C.

87 BLUE CHIP
BUDDLEIA
EVENLY STAGGERED 6' O.C.
IN ROWS 3' APART

60 DAUB'S FROSTED
JUNIPER
EVENLY STAGGERED 6' O.C.
IN ROWS 5' APART

9 EMERALD GREEN
ARBOVITAE @ 66 $\frac{2}{3}$ ' O.C.
60 ROSE CREEK
ABELIA
EVENLY STAGGERED 6' O.C.
IN ROWS 6' APART



NCDOT - ROADSIDE ENVIRONMENTAL UNIT
LANDSCAPE DESIGN & DEVELOPMENT
1557 MAIL SERVICE CENTER, RALEIGH, NC 27699-1557
PH: 919-707-2920 FAX: 919-715-2554
[HTTP://WWW.NCDOT.ORG/DOH/OPERATIONS/DP_CHIEF_ENG/ROADSIDE/](http://www.ncdot.org/DOH/OPERATIONS/DP_CHIEF_ENG/ROADSIDE/)

US 74
Cherokee County, Andrews
W060: 3714.3.11

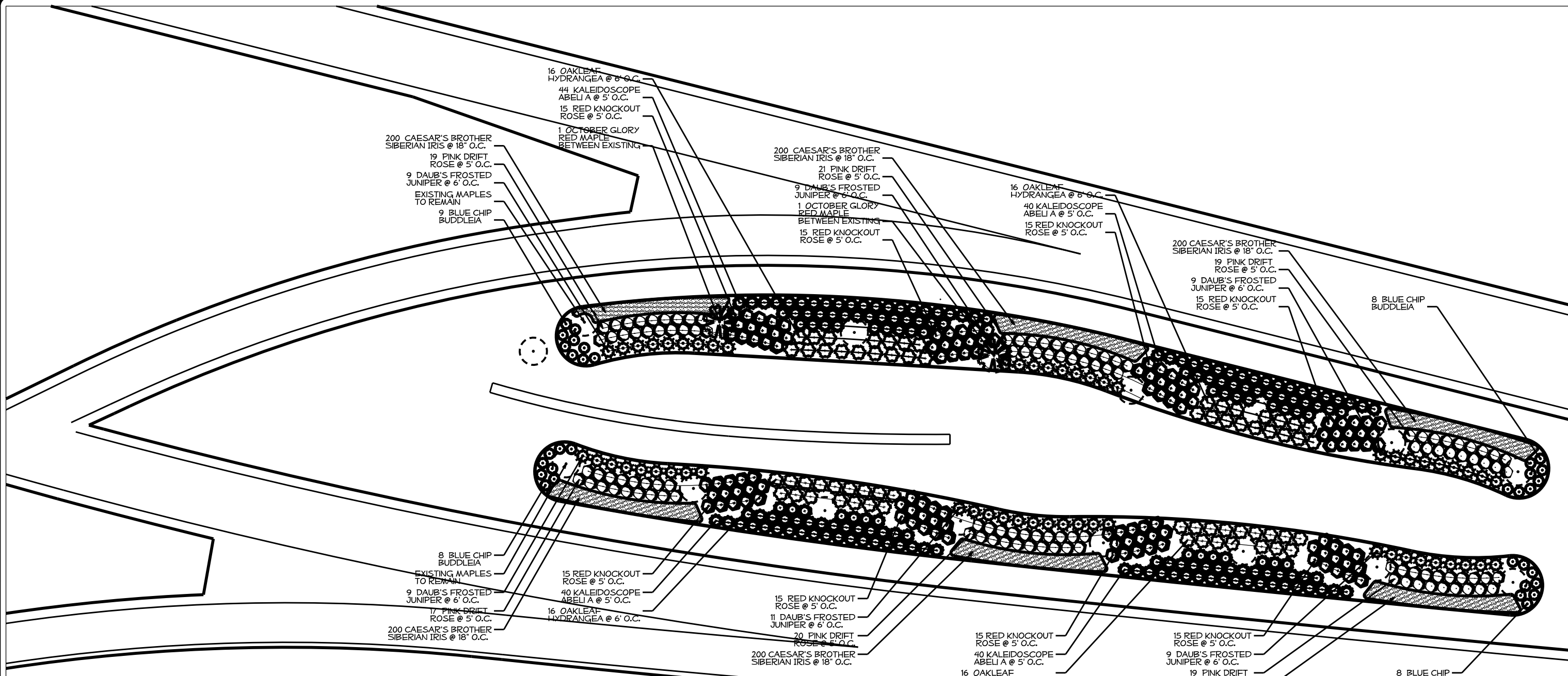
REV ENGINEER :

SHEET DESCRIPTION:
Planting Plan
US 74 at US 19 Bus.
West of Andrews

PREL DESIGN DATE: **5 /17 /2013**
CHECKED BY & DATE :
FINAL DESIGN DATE: **10 /31 /2013**

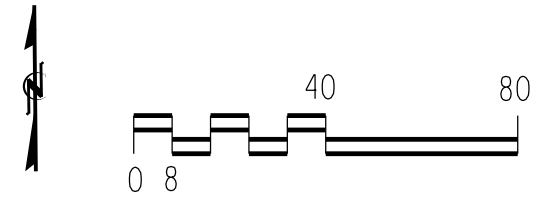


SHEET NO : **5**
TOTAL SHEET NO : **7**



US19-74 Median at US19 Business, Andrews

Des	Sec	Qty	Unit	Botanical Name	Common Name	Size	Caliper	Furnish	A.S.N.S.	Remarks
L	1670	164	EA	<i>Abelia x Kaleidoscope</i>	Kaleidoscope Abelia	15-18"		#3 cont.	4.2.3	5' o.c. nom.
L	1670	2	EA	<i>Acer rubrum 'October Glory'</i>	October Glory Red Maple	12-14'	3-3 1/2"	B&B	1.2.2	as shown
L	1670	32	EA	<i>Buddleia 'Blue Chip'</i>	Blue Chip Butterfly Bush	12-15"		#3 cont.	4.2.1	4' o.c. nom.
L	1670	2400	EA	<i>Hemerocallis 'Buttered Popcom'</i>	Buttered Popcom Daylily			#1 cont.	12.2.3	24" o.c.
L	1670	64	EA	<i>Hydrangea quercifolia</i>	Oakleaf Hydrangea	18-24"		#3 cont.	2.2.3	6' o.c. nom.
L	1670	1200	EA	<i>Iris siberica 'Caesar's Brother'</i>	Caesar's Brother Siberian Iris			1-2 fan, #4 SP cont.	12.2.5	18" o.c.
L	1670	56	EA	<i>Juniperus chinensis Daub's Frosted'</i>	Daub's Frosted Juniper	15-18"		#3 cont.	3.2.2	6' o.c. nom.
L	1670	117	EA	<i>Rosa Meijocosa</i>	Pink Drift Rose	15-18"		#3 cont.	5.2	5' o.c. nom.
L	1670	120	EA	<i>Rosa Raddtko</i>	Red Knockout Rose	15-18"		#3 cont.	5.2	5' o.c. nom.
SP	1670	3	EA	Grind Stumps						
2729	1670	340	CY	Mulch for Planting						



NCDOT - ROADSIDE ENVIRONMENTAL UNIT
 LANDSCAPE DESIGN & DEVELOPMENT
 1557 MAIL SERVICE CENTER, RALEIGH, NC 27699-1557
 PH: 919-707-2920 FAX: 919-715-2554
[HTTP://WWW.NCDOT.ORG/DOH/OPERATIONS/DP_CHIEF_ENG/ROADSIDE/](http://www.ncdot.org/DOH/OPERATIONS/DP_CHIEF_ENG/ROADSIDE/)

US 74
Cherokee County, Andrews
W060: 3714.3.11

REV ENGINEER :

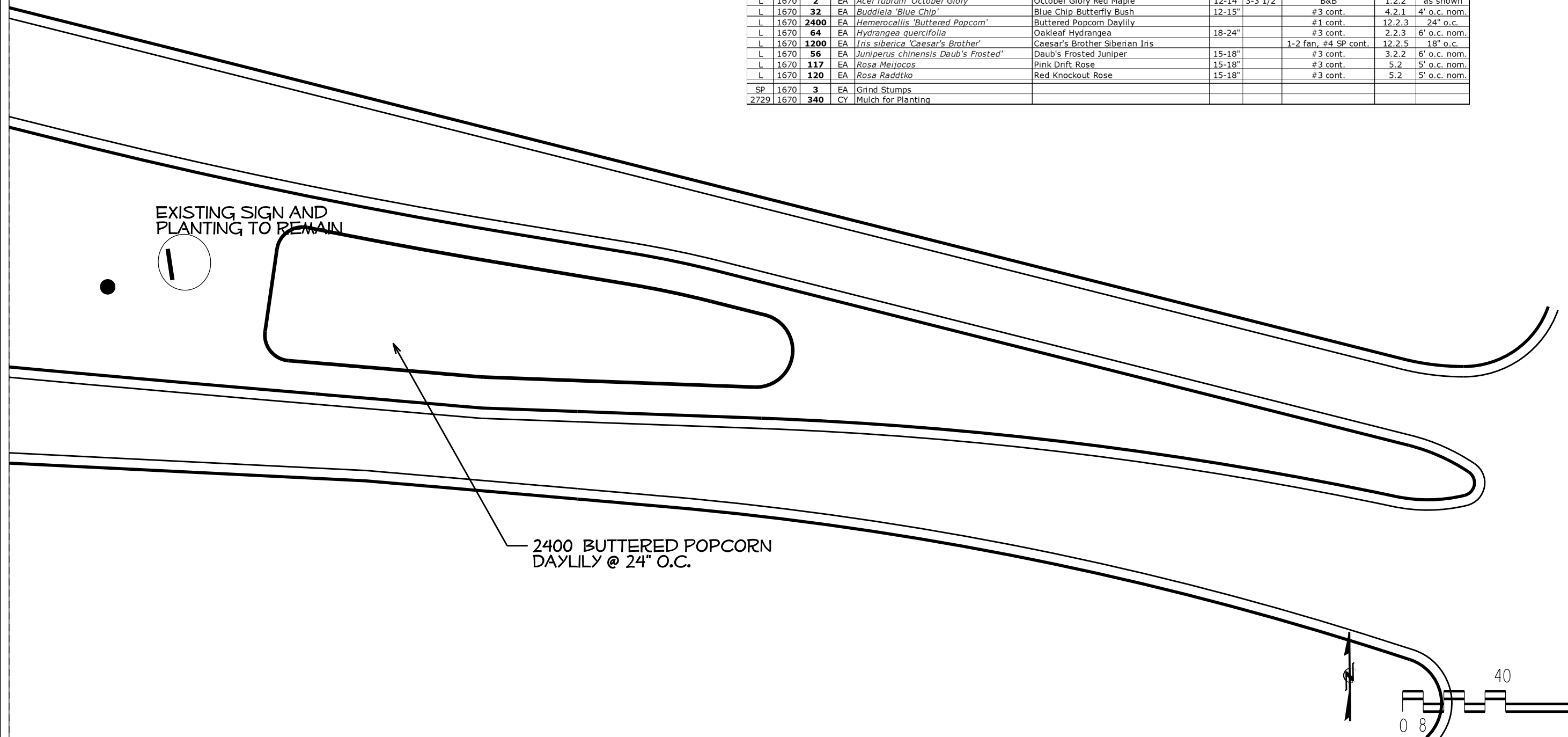
Planting Plan
US 74 at US 19 Bus.
East of Andrews

PREL DESIGN DATE: **9 / 17 / 2013**
 CHECKED BY & DATE :
 FINAL DESIGN DATE: **10 / 31 / 2013**



SHEET NO : **6**
 TOTAL SHEET NO : **7**

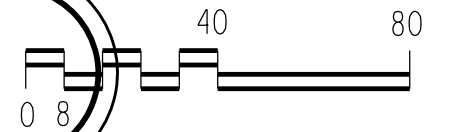
US19-74 Median at US19 Business, Andrews										
Des	Sec	Qty	Unit	Botanical Name	Common Name	Size	Caliper	Furnish	A.S.N.S.	Remarks
L	1670	164	EA	<i>Abellia x Kaleidoscope</i>	Kaleidoscope Abelia	15-18"		#3 cont.	4.2.3	5' o.c. nom.
L	1670	2	EA	<i>Acer rubrum 'October Glory'</i>	October Glory Red Maple	12-14"	3-3 1/2"	B&B	1.2.2	as shown
L	1670	32	EA	<i>Buddleia 'Blue Chip'</i>	Blue Chip Butterfly Bush	12-15"		#3 cont.	4.2.1	4' o.c. nom.
L	1670	2400	EA	<i>Hemerocallis 'Buttered Popcorn'</i>	Buttered Popcorn Daylily			#1 cont.	12.2.3	24" o.c.
L	1670	64	EA	<i>Hydrangea quercifolia</i>	Oakleaf Hydrangea	18-24"		#3 cont.	2.2.3	6' o.c. nom.
L	1670	1200	EA	<i>Iris siberica 'Caesar's Brother'</i>	Caesar's Brother Siberian Iris			1-2 fan, #4 SP cont.	12.2.5	18" o.c.
L	1670	56	EA	<i>Juniperus chinensis Daub's Frosted'</i>	Daub's Frosted Juniper	15-18"		#3 cont.	3.2.2	6' o.c. nom.
L	1670	117	EA	<i>Rosa Meijocosa</i>	Pink Drift Rose	15-18"		#3 cont.	5.2	5' o.c. nom.
L	1670	120	EA	<i>Rosa Raddtko</i>	Red Knockout Rose	15-18"		#3 cont.	5.2	5' o.c. nom.
SP	1670	3	EA	Grind Stumps						
2729	1670	340	CY	Mulch for Planting						



EXISTING SIGN AND
PLANTING TO REMAIN



2400 BUTTERED POPCORN
DAYLILY @ 24" O.C.



NCDOT - ROADSIDE ENVIRONMENTAL UNIT
LANDSCAPE DESIGN & DEVELOPMENT
1557 MAIL SERVICE CENTER, RALEIGH, NC 27699-1557
PH: 919-707-2920 FAX: 919-715-2554
[HTTP://WWW.NCDOT.ORG/DOH/OPERATIONS/DP_CHIEF_ENG/ROADSIDE/](http://www.ncdot.org/DOH/OPERATIONS/DP_CHIEF_ENG/ROADSIDE/)

US 74
Cherokee County, Andrews
W060: 3714.3.11

REV ENGINEER :

SHEET DESCRIPTION:

Planting Plan

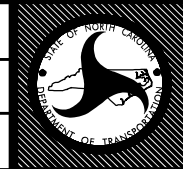
US 74 at US 19 Bus.

East of Andrews

PREL DESIGN DATE: **9 /17 /2013**

CHECKED BY & DATE :

FINAL DESIGN DATE: **10 /31 /2013**



SHEET NO : **7**

TOTAL SHEET NO : **7**



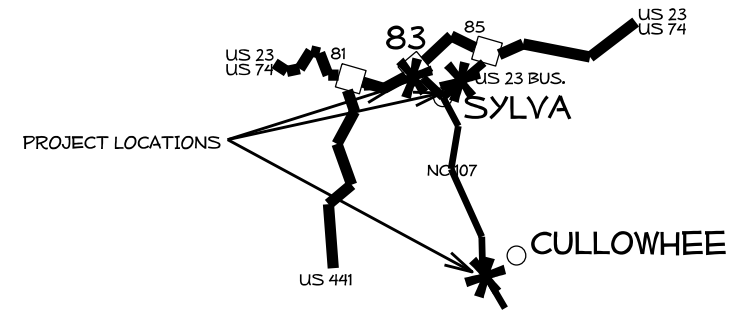
PROPOSED HIGHWAY LANDSCAPE DEVELOPMENT PROJECT



T.I.P. #	STATE PROJECT W.B.S. #	SHEET #	SHEET # TOTAL
-	3714.3 (.19, .13, .06)	L1	5
FED. PROJ. #	DESCRIPTION	DIVISION	
-	Enhancement	14	



NC GRID
NAD 83



Summary of Quantities

Exit 83 Sylva

Des	Sec	Qty.	Unit	Botanical Name	Common Name	Size	Caliper	Furnish	A.S.N.S.	Remarks
L	1670	99	EA	<i>Abelia grandiflora</i> 'Rose Creek'	Rose Creek Abelia	15-18"		#3 cont. min.	4.2.4	5' o.c.
L	1670	113	EA	<i>Buddleia</i> x. 'Blue Chip'	Blue Chip Butterfly Bush	15-18"		#3 cont. min.		4' o.c.
L	1670	1400	EA	<i>Hemerocallis</i> 'Buttered Popcorn'	Buttered Popcorn Daylily			#1 cont. min.	12.2.3	24" o.c.
L	1670	97	EA	<i>Hydrangea quercifolia</i> 'x'	x Oakleaf Hydrangea	18-24"		#3 cont. min.	2.2.3	6' o.c.
L	1670	1200	EA	<i>Iris sibirica</i> 'Caesar's Brother'	Caesar's Brother Siberian Iris			#1 cont. min.	12.2.5	18" o.c.
L	1670	225	EA	<i>Muhlenbergia capillaris</i>	Pink Muhly Grass			#3 cont. min.	12.3	4' o.c.
L	1670	96	EA	<i>Physocarpus opulifoliosus</i> 'Summer Wine'	Summer Wine Ninebark	18-24"		#3 cont. min.	2.2.3	6' o.c.
L	1670	53	EA	<i>Rosa Radcon</i>	Pink Knockout Rose	15-18"		#2 cont. No. 1 Grade	5.6	5' o.c.
L	1670	104	EA	<i>Viburnum</i> 'Popcorn'	Popcorn Viburnum	18-24"		#3 cont. min.	2.2.3	6' o.c.
2729	1670	315	CY		Mulch for Planting					
SP	1670	4	EA		Large Tree Removal - 24"					

US 23 Business Slope Sylva

Des	Sec	Qty.	Unit	Botanical Name	Common Name	Size	Caliper	Furnish	A.S.N.S.	Remarks
L	1670	125	EA	<i>Abelia grandiflora</i> 'Rose Creek'	Rose Creek Abelia	15-18"		#3 cont. min.	4.2.4	5' o.c.
L	1670	167	EA	<i>Buddleia</i> x. 'Blue Chip'	Blue Chip Butterfly Bush	15-18"		#3 cont. min.		4' o.c.
L	1670	3	EA	<i>Cercis canadensis</i> 'Forest Pansy'	Forest Pansy Redbud	7-8"		B&B	1.2.4	as shown
L	1670	805	EA	<i>Hemerocallis</i> 'Gertrude Condon'	Gertrude Condon Daylily			#1 cont. min.	12.2.3	24" o.c.
L	1670	108	EA	<i>Iris sibirica</i> 'Caesar's Brother'	Caesar's Brother Siberian Iris			#1 cont. min.	12.2.5	18" o.c.
L	1670	65	EA	<i>Juniperus chinensis</i> 'Daub's Frosted'	Daub's Frosted Juniper	15-18"		#3 cont. min.	3.2.2	5' o.c.
L	1670	185	EA	<i>Juniperus horizontalis</i> 'Wiltonii'	Blue Rug Juniper	12-15"		#3 cont. min.	3.2.2	4' o.c.
L	1670	48	EA	<i>Panicum virgatum</i> 'Cheyenne Sky'	Cheyenne Sky Red Switchgrass			#1 cont. min.	12.3	4' o.c.
L	1670	122	EA	<i>Rosa Radrazz Red</i>	Red Knockout Rose	15-18"		#2 cont. No. 1 Grade	5.6	5' o.c.
2729	1670	265	CY		Mulch for Planting					

NC 107 Median Cullowhee

Des	Sec	Qty.	Unit	Botanical Name	Common Name	Size	Caliper	Furnish	A.S.N.S.	Remarks
L	1670	95	EA	<i>Abelia</i> 'Kaleidoscope'	Kaleidoscope Abelia	15-18"		#3 cont. min.	4.2.4	as shown
L	1670	190	EA	<i>Buddleia</i> 'Blue Chip'	Blue Chip Butterfly Bush	15-18"		#3 cont. min.	4.2.1	4' o.c. nom.
L	1670	16	EA	<i>Chamaecyparis pisifera</i> 'Gold Thread'	Gold Thread False Cypress	18-24"		#3 cont. min.	3.0	5' o.c. nom.
L	1670	85	EA	<i>Hemerocallis</i> 'Gertrude Condon'	Gertrude Condon Daylily			#1 cont. min.	12.2.3	24" o.c.
L	1670	10	EA	<i>Ilex</i> x. 'Conaf'	Oakleaf Red Holly	3-4'		#7 cont. min.	4.2.4	75' o.c. nom.
L	1670	840	EA	<i>Iris sibirica</i> 'Caesar's Brother'	Caesar's Brother Siberian Iris			#1 cont. min.	12.2.5	18" o.c.
L	1670	90	EA	<i>Juniperus pfitzeriana</i> 'Old Gold'	Old Gold Juniper	15-18"		#3 cont. min.	3.2.2	5' o.c. nom.
2729	1670	215	CY		Mulch fo Planting					

CONVENTIONAL SYMBOLS

County Line	-----
City or Town Line	-----
Exist. Right of Way Line Marker	-----▲-----
Prop. Right of Way Line Marker (By Others)	-----▲-----
Prop. Right of Way Line Marker (By Contract)	-----▲-----
Exist. Control of Access Line	-----○-----
Prop. Control of Access Line	-----○-----
Property Line	-----
Easement Line	-----
Slope Stake Line	-----
Exist. Fence	-----
Prop. Woven Wire Fence	-----
Prop. Chain Link Fence	-----
Exist. Road	-----
Prop. Road	-----
Guardrail	-----
Survey Line	-----
Denotes Line Equality	-----
Bridge	-----
Culvert	-----
Railroad	-----
Woods	-----
Exist. Telephone Pole	-----
Prop. Telephone Pole	-----
Tower Pole and Line	-----
Exist. Power Pole	-----
Prop. Power Pole	-----
Sanitary Sewer Line	-----
Water Line	-----
Gas Line	-----
Picnic Shelter	-----
Regeneration	-----
Reforestation	-----

INDEX OF L SHEETS:

- L 1 ... TITLE, DESCRIPTION, LOCATION
- L 2 ... PLANTING DETAILS
- L 3-5 ... PLANTING PLANS

PREPARED BY: DW DATE: 10/31/2013

REVISIONS

DATE	DESCRIPTION

PROJECT: LANDSCAPE PLANTING



STATE OF
NORTH CAROLINA
DEPARTMENT OF TRANSPORTATION

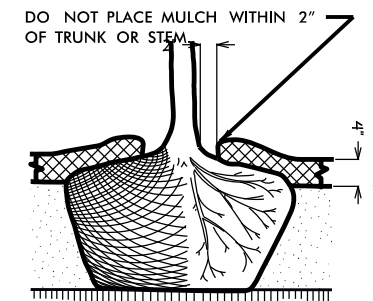
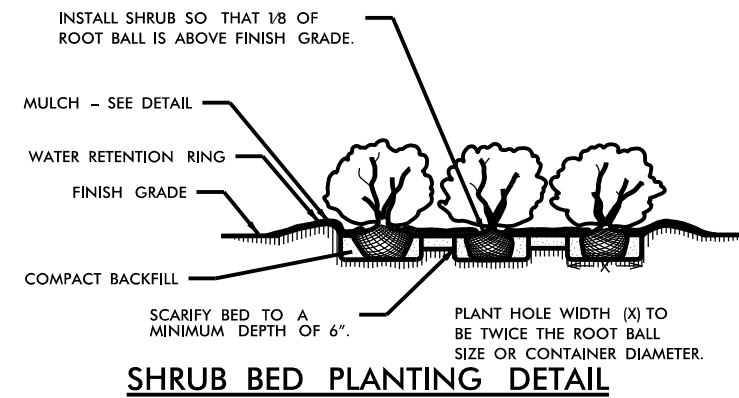
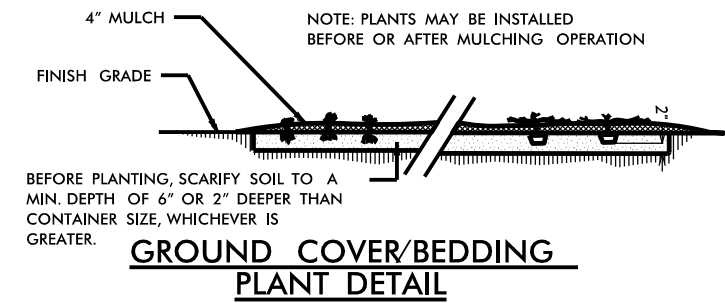
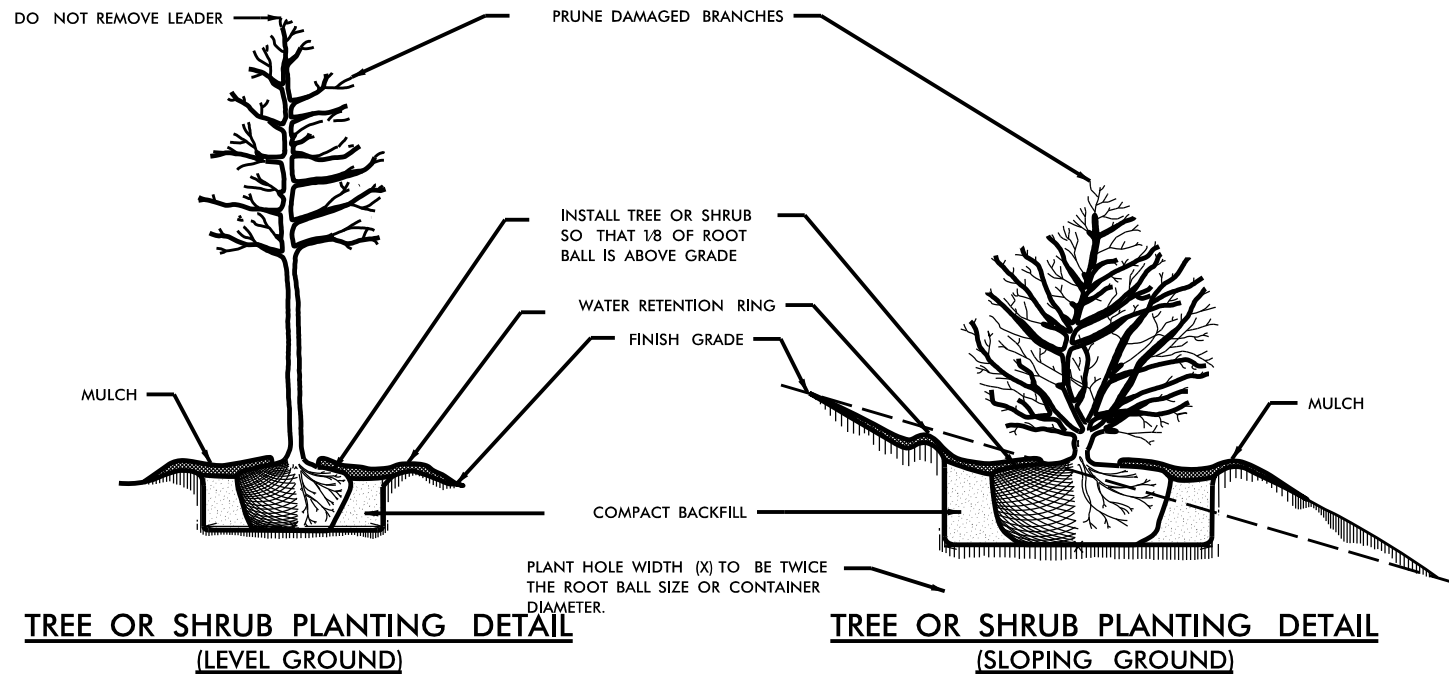
LOCATION: US 74-Exit 83, US 29 Bus. and NC 107

TYPE of WORK: Landscape Planting

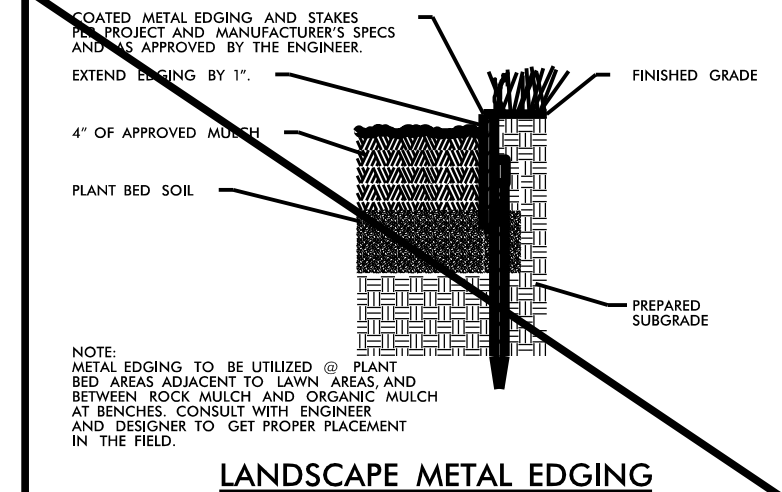
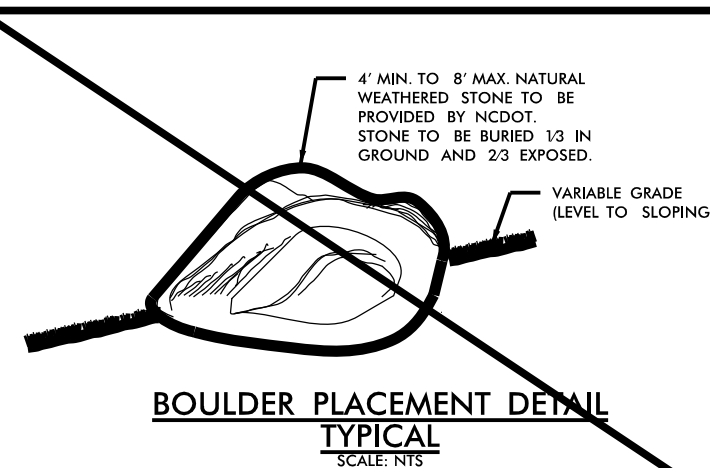
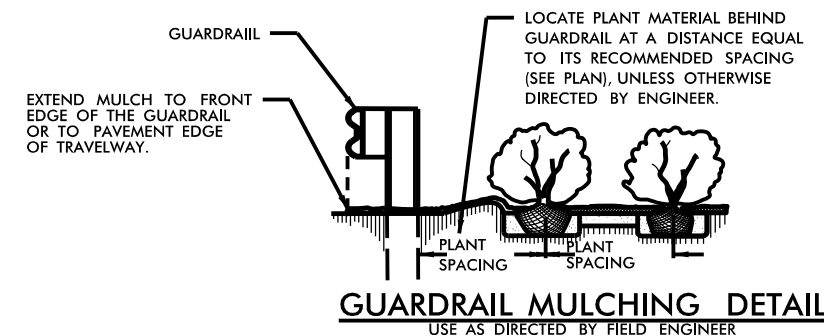
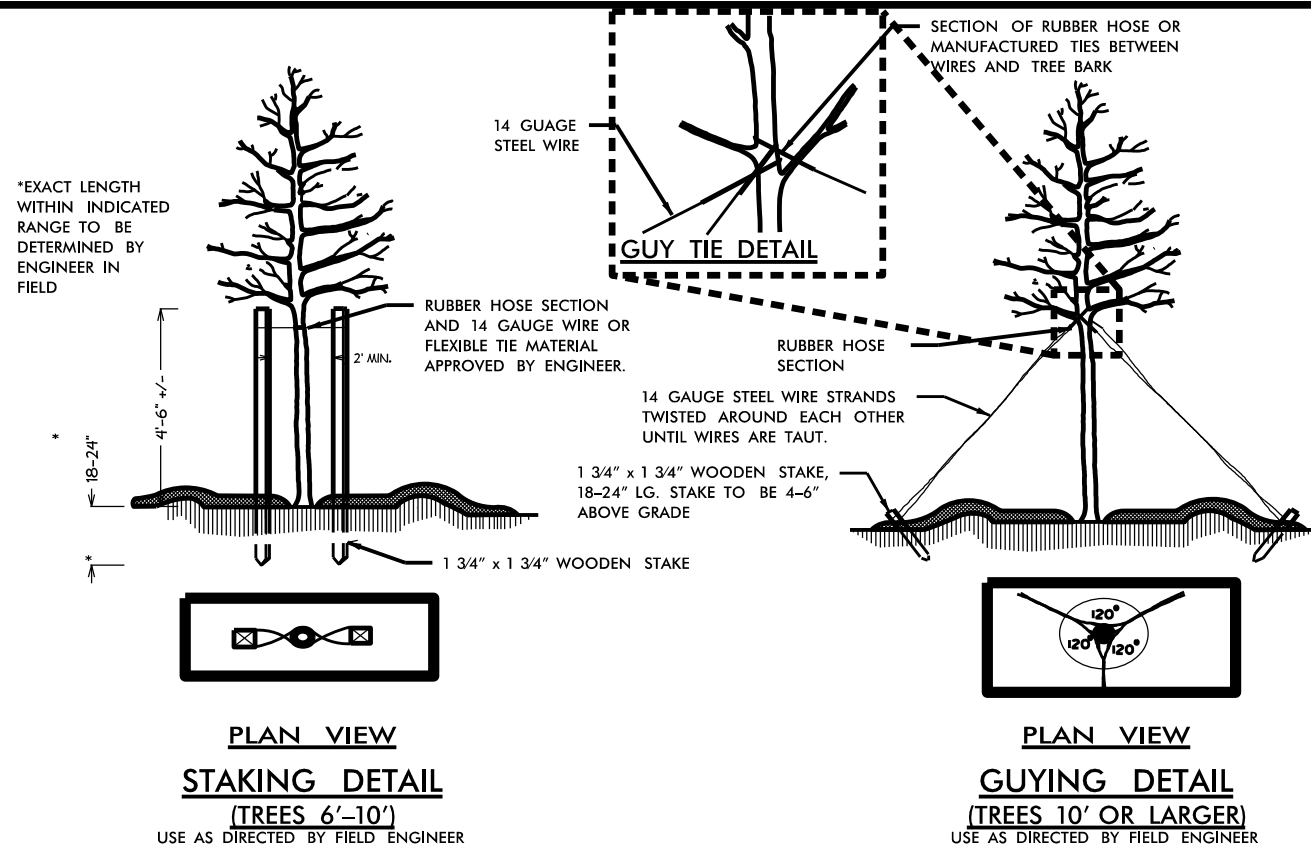
COUNTY: Jackson County

D Wilson

2004 American Standard for Nursery Stock
2012 NCDOT STANDARD SPECIFICATIONS
PREPARED IN THE OFFICE OF:
NCDOT- ROADSIDE ENVIRONMENTAL UNIT
LANDSCAPE DESIGN & DEVELOPMENT SECTION
1557 MAIL SERVICE CENTER
RALEIGH NC 27699 919-707-2920



- NOTES:**
- SCHEDULE FOR PLANT HOLE SIZE: PLANT HOLE WIDTH (X) TO BE TWICE THE ROOT BALL SIZE OR CONTAINER DIAMETER.
 - SEE STANDARD SPECIFICATIONS FOR PLANT BED FUMIGATION AND HERBICIDAL TREATMENT.
 - APPLY FERTILIZER AT PLANTING TIME IN THE FORM OF A SLOW RELEASE PELLET OR TABLET. APPLY AT RATE RECOMMENDED BY MANUFACTURER. BOTH RATE AND FORMULATION MUST BE APPROVED BY FIELD ENGINEER PRIOR TO APPLICATION.
 - REMOVE WIRE BASKET AND FOLD BURLAP BACK FROM TOP OF ROOT BALL BEFORE BACKFILLING IS COMPLETE.
 - ALL PRUNING TO FOLLOW STANDARD ARBORICULTURAL PRACTICES AS SPECIFIED BY INTERNATIONAL SOCIETY OF ARBORICULTURE.
 - DO NOT ATTEMPT TO STRAIGHTEN A TREE THAT HAS BEEN PLANTED AT AN ANGLE WITH THE USE OF STAKING OR GUYING. DIG TREE AND REPLANT TO UPRIGHT POSITION.



NCDOT - ROADSIDE ENVIRONMENTAL UNIT
 LANDSCAPE DESIGN & DEVELOPMENT
 1557 MAIL SERVICE CENTER, RALEIGH, NC 27699-1557
 PH: 919-707-2920 FAX: 919-715-2554
 HTTP://WWW.NCDOT.ORG/DOH/OPERATIONS/DP_CHIEF_ENG/ROADSIDE/

US 74, US 29B, and NC 107
 Jackson County
 W060: 3714.3 (.19, .13, .06)

REV ENGINEER :

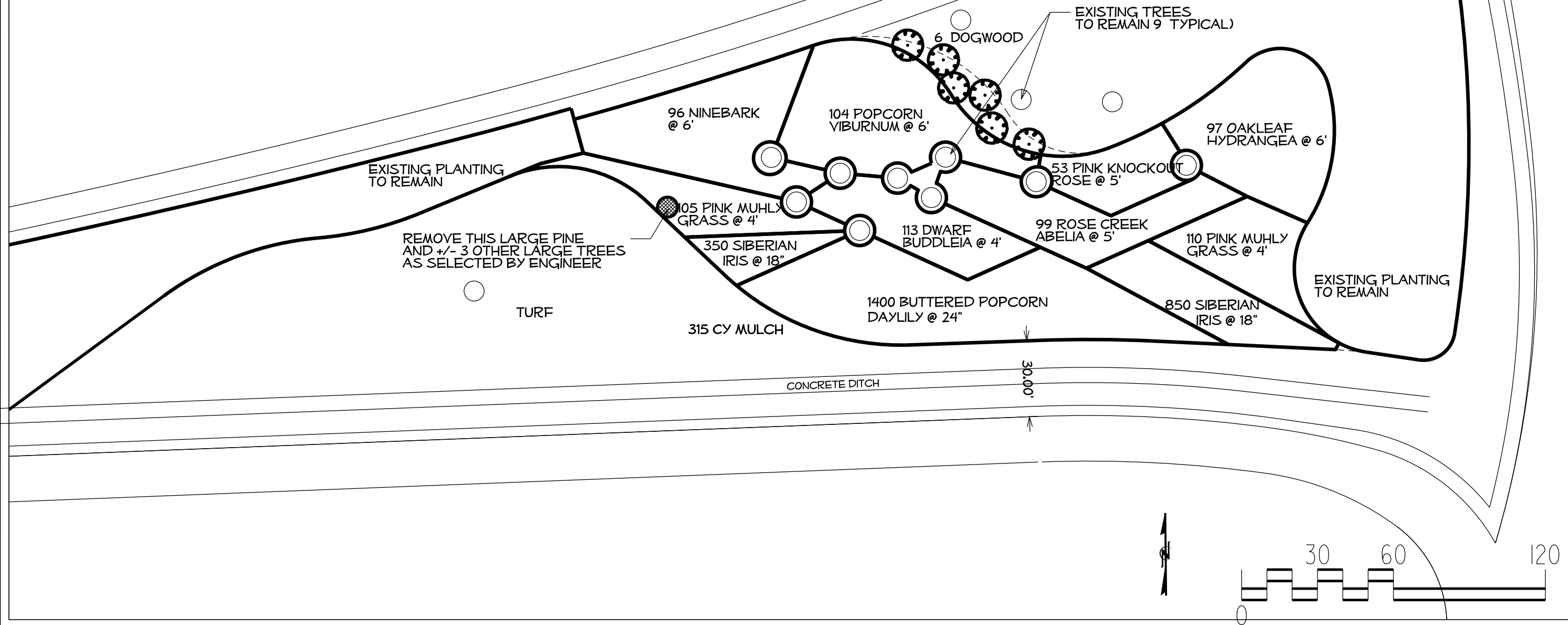
SHEET DESCRIPTION:	Planting Details

PREL DESIGN DATE: 5 / 17 / 2013
 CHECKED BY & DATE :
 FINAL DESIGN DATE: 10 / 31 / 2013



SHEET NO : 2
 TOTAL SHEET NO : 5

Exit 83 Sylva										
Des	Sec	Qty.	Unit	Botanical Name	Common Name	Size	Caliper	Furnish	A.S.N.S.	Remarks
L	1670	99	EA	<i>Abelia grandiflora</i> 'Rose Creek'	Rose Creek Abelia	15-18"		#3 cont. min.	4.2.4	5' o.c.
L	1670	113	EA	<i>Buddleia</i> x. 'Blue Chip'	Blue Chip Butterfly Bush	15-18"		#3 cont. min.		4' o.c.
L	1670	1400	EA	<i>Hemerocallis</i> 'Buttered Popcorn'	Buttered Popcorn Daylily			#1 cont. min.	12.2.3	24" o.c.
L	1670	97	EA	<i>Hydrangea quercifolia</i> 'x'	x Oakleaf Hydrangea	18-24"		#3 cont. min.	2.2.3	6' o.c.
L	1670	1200	EA	<i>Iris sibirica</i> 'Caesar's Brother'	Caesar's Brother Siberian Iris			#1 cont. min.	12.2.5	18" o.c.
L	1670	225	EA	<i>Muhlenbergia capillaris</i>	Pink Muhly Grass			#3 cont. min.	12.3	4' o.c.
L	1670	96	EA	<i>Physocarpus opulifoliosus</i> 'Summer Wine'	Summer Wine Ninebark	18-24"		#3 cont. min.	2.2.3	6' o.c.
L	1670	53	EA	<i>Rosa Radcon</i>	Pink Knockout Rose	15-18"		#2 cont. No. 1 Grade	5.6	5' o.c.
L	1670	104	EA	<i>Viburnum</i> 'Popcorn'	Popcorn Viburnum	18-24"		#3 cont. min.	2.2.3	6' o.c.
2729	1670	315	CY		Mulch for Planting					
SP	1670	4	EA		Large Tree Removal - 24"					



NCDOT - ROADSIDE ENVIRONMENTAL UNIT
 LANDSCAPE DESIGN & DEVELOPMENT
 1557 MAIL SERVICE CENTER, RALEIGH, NC 27699-1557
 PH: 919-707-2920 FAX: 919-715-2554
[HTTP://WWW.NCDOT.ORG/DOH/OPERATIONS/DP_CHIEF_ENG/ROADSIDE/](http://www.ncdot.org/DOH/OPERATIONS/DP_CHIEF_ENG/ROADSIDE/)

US 74 Exit 83
Jackson County, Sylva
W060: 3714.3.19

REV ENGINEER :

SHEET DESCRIPTION:

Planting Plan

PREL DESIGN DATE: **5 /17 /2013**

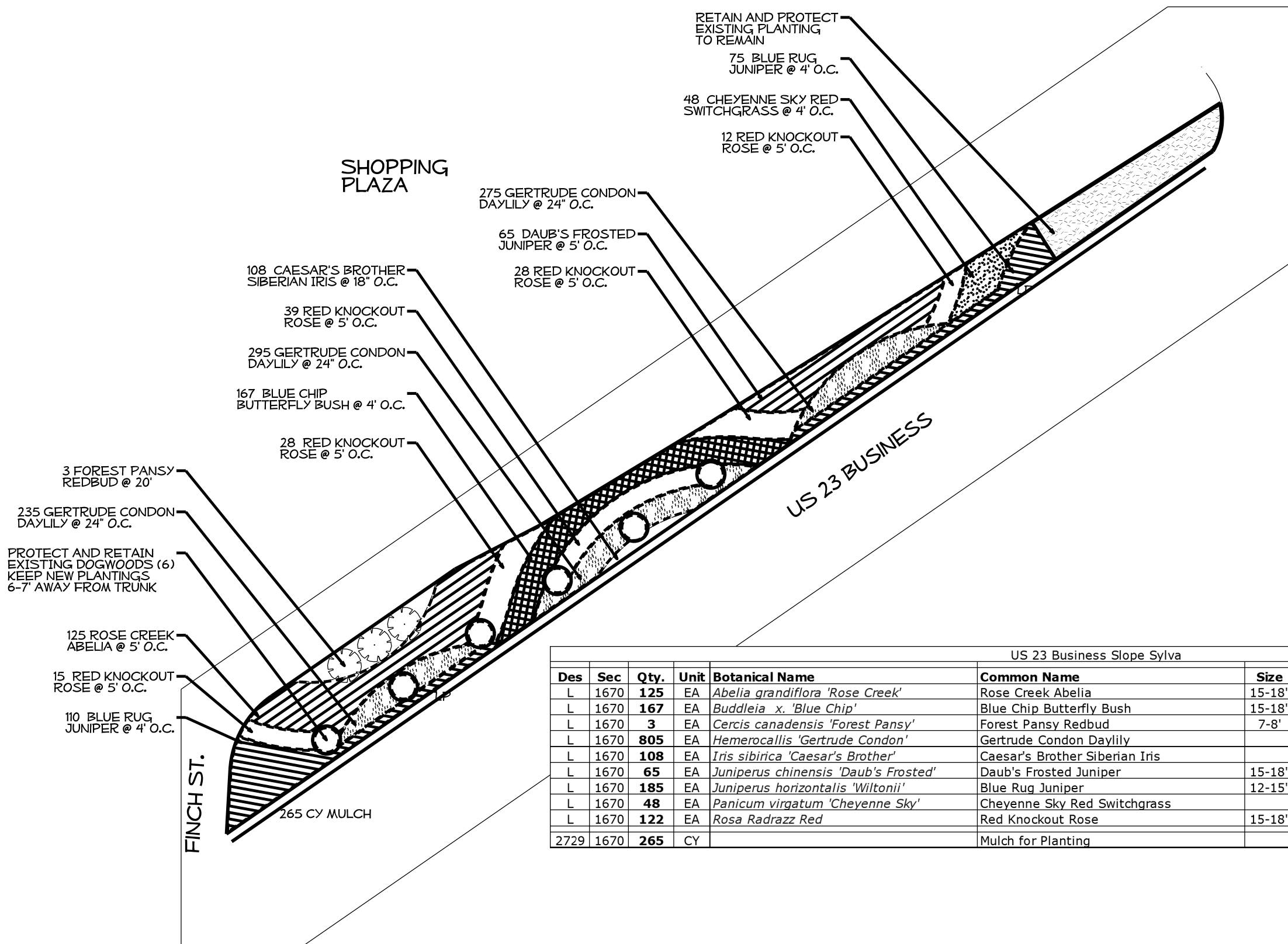
CHECKED BY & DATE :

FINAL DESIGN DATE: **10 /31 /2013**

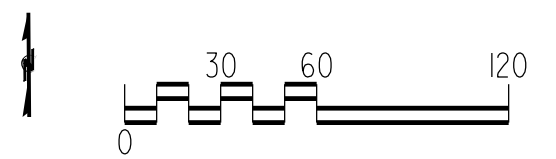


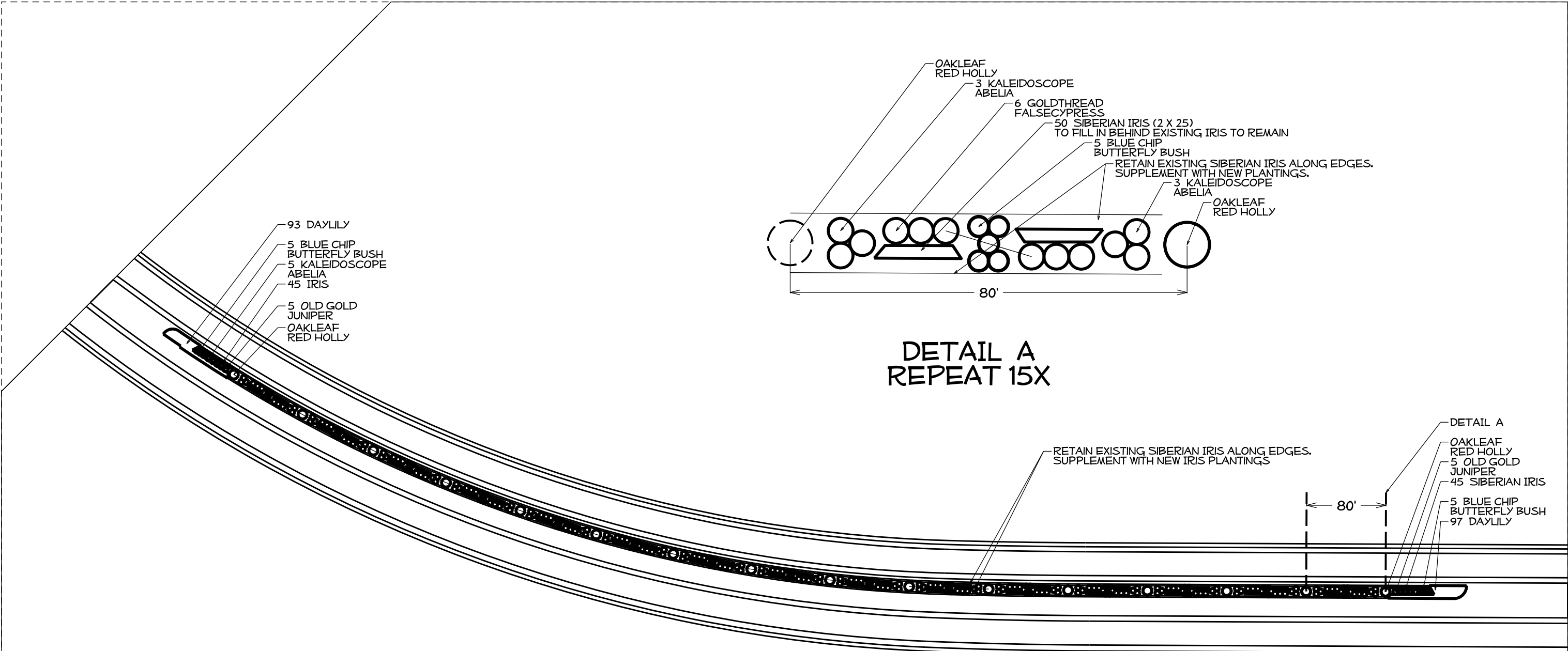
SHEET NO : **3**

TOTAL SHEET NO : **5**

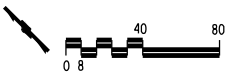


US 23 Business Slope Sylva										
Des	Sec	Qty.	Unit	Botanical Name	Common Name	Size	Caliper	Furnish	A.S.N.S.	Remarks
L	1670	125	EA	<i>Abelia grandiflora</i> 'Rose Creek'	Rose Creek Abelia	15-18"		#3 cont. min.	4.2.4	5' o.c.
L	1670	167	EA	<i>Buddleia</i> x. 'Blue Chip'	Blue Chip Butterfly Bush	15-18"		#3 cont. min.		4' o.c.
L	1670	3	EA	<i>Cercis canadensis</i> 'Forest Pansy'	Forest Pansy Redbud	7-8'		B&B	1.2.4	as shown
L	1670	805	EA	<i>Hemerocallis</i> 'Gertrude Condon'	Gertrude Condon Daylily			#1 cont. min.	12.2.3	24" o.c.
L	1670	108	EA	<i>Iris sibirica</i> 'Caesar's Brother'	Caesar's Brother Siberian Iris			#1 cont. min.	12.2.5	18" o.c.
L	1670	65	EA	<i>Juniperus chinensis</i> 'Daub's Frosted'	Daub's Frosted Juniper	15-18"		#3 cont. min.	3.2.2	5' o.c.
L	1670	185	EA	<i>Juniperus horizontalis</i> 'Wiltonii'	Blue Rug Juniper	12-15"		#3 cont. min.	3.2.2	4' o.c.
L	1670	48	EA	<i>Panicum virgatum</i> 'Cheyenne Sky'	Cheyenne Sky Red Switchgrass			#1 cont. min.	12.3	4' o.c.
L	1670	122	EA	<i>Rosa Radrazz Red</i>	Red Knockout Rose	15-18"		#2 cont. No. 1 Grade	5.6	5' o.c.
2729	1670	265	CY		Mulch for Planting					





NC 107 Median Cullowhee										
Des	Sec	Qty	Unit	Botanical Name	Common Name	Size	Caliper	Furnish	A.S.N.S.	Remarks
L	1670	95	EA	<i>Abelia 'Kaleidoscope'</i>	Kaleidoscope Abelia	15-18"		#3 cont. min.	4.2.4	as shown
L	1670	190	EA	<i>Buddleia 'Blue Chip'</i>	Blue Chip Butterfly Bush	15-18"		#3 cont. min.	4.2.1	4' o.c. nom.
L	1670	16	EA	<i>Chamaecyparis pisifera 'Gold Thread'</i>	Gold Thread False Cypress	18-24"		#3 cont. min.	3.0	5' o.c. nom.
L	1670	85	EA	<i>Hemerocallis 'Gertrude Condon'</i>	Gertrude Condon Daylily			#1 cont. min.	12.2.3	24" o.c.
L	1670	10	EA	<i>Ilex x. Conaf'</i>	Oakleaf Red Holly	3-4'		#7 cont. min.	4.2.4	75' o.c. nom.
L	1670	840	EA	<i>Iris siberica 'Caesar's Brother'</i>	Caesar's Brother Siberian Iris			#1 cont. min.	12.2.5	18" o.c.
L	1670	90	EA	<i>Juniperus pfitzeriana 'Old Gold'</i>	Old Gold Juniper	15-18"		#3 cont. min.	3.2.2	5' o.c. nom.
2729	1670	215	CY		Mulch fo Planting					



NCDOT - ROADSIDE ENVIRONMENTAL UNIT
 LANDSCAPE DESIGN & DEVELOPMENT
 1557 MAIL SERVICE CENTER, RALEIGH, NC 27699-1557
 PH: 919-707-2920 FAX: 919-715-2554
[HTTP://WWW.NCDOT.ORG/DOH/OPERATIONS/DP_CHIEF_ENG/ROADSIDE/](http://www.ncdot.org/DOH/OPERATIONS/DP_CHIEF_ENG/ROADSIDE/)

NC 107
Jackson County, Cullowhee
W060: 3714.3.06

REV ENGINEER :

SHEET DESCRIPTION:

Planting Plan

PREL DESIGN DATE: **5 /17 /2013**

CHECKED BY & DATE :

FINAL DESIGN DATE: **10 /31 /2013**



SHEET NO : **5**

TOTAL SHEET NO : **5**