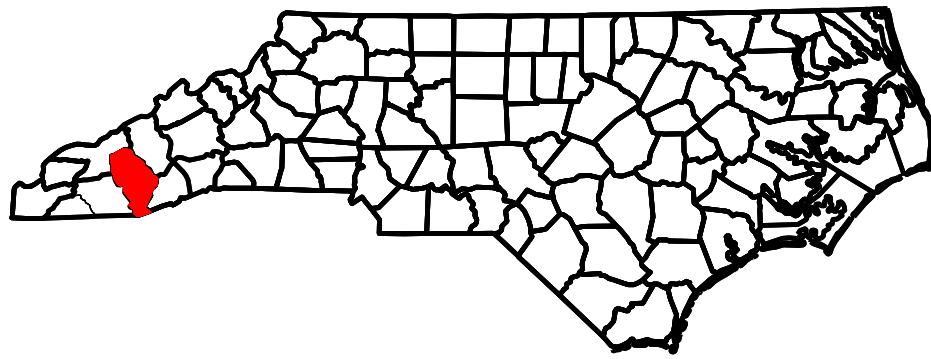
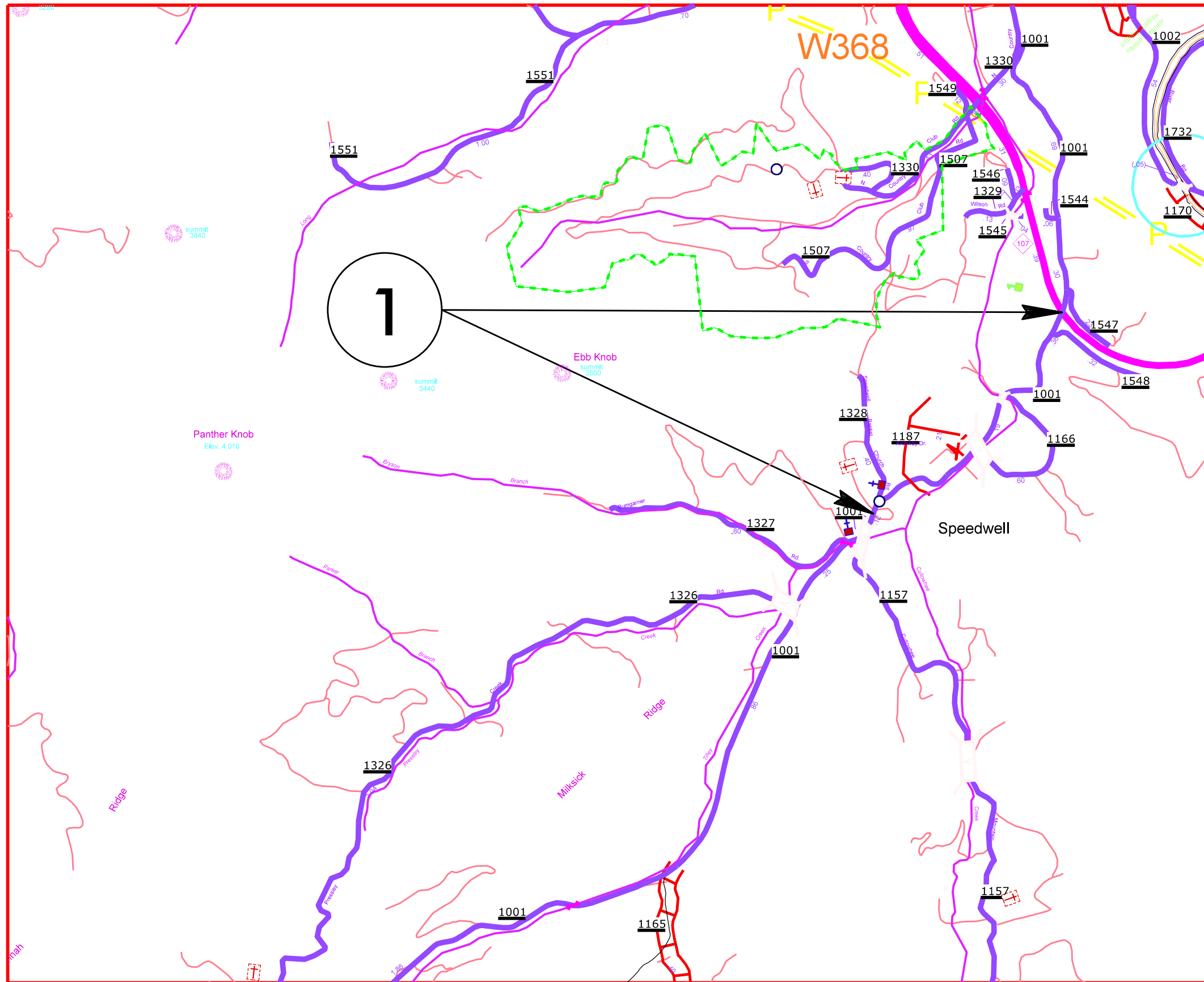


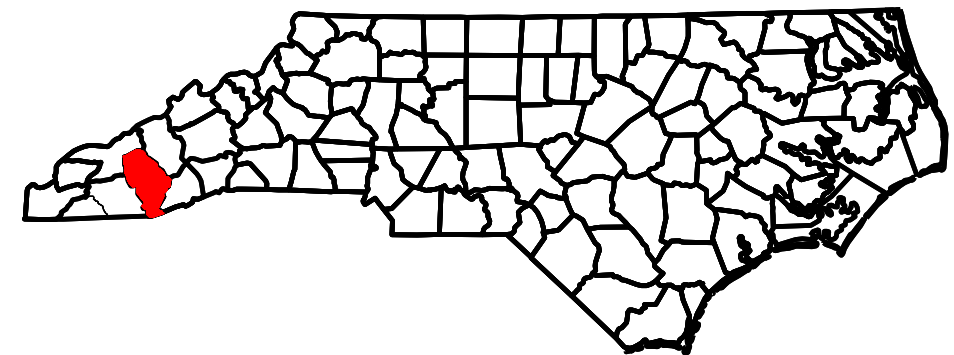
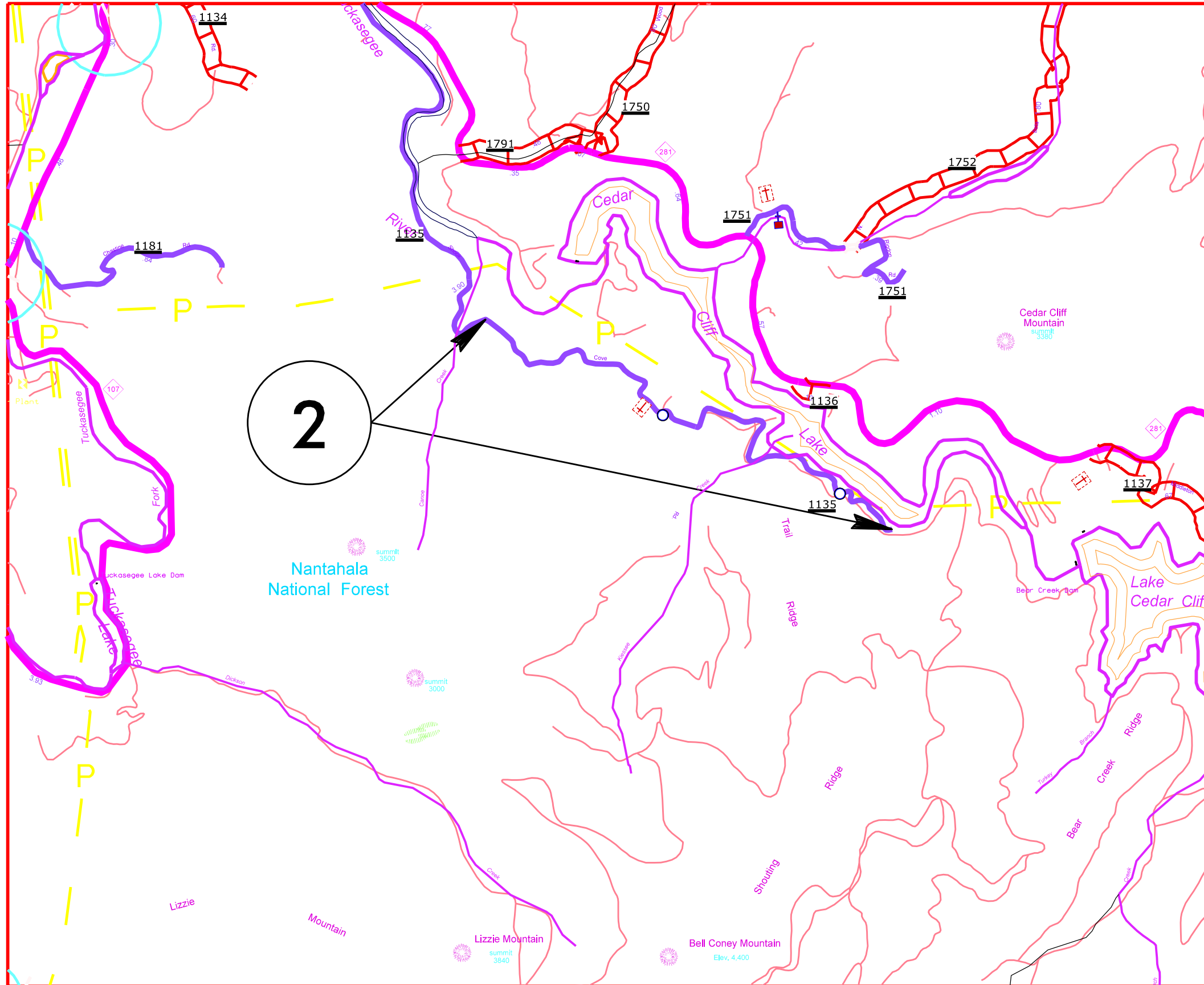
# 2011 CONTRACT RESURFACING JACKSON COUNTY

PROJECT REFERENCE NO.	SHEET NO.	
14CR.20501.9	1 OF 9	
STATE PROJECT	F.A. PROJECT NO.	DESCRIPTION
14CR.20501.9		
14CR.20871.8		



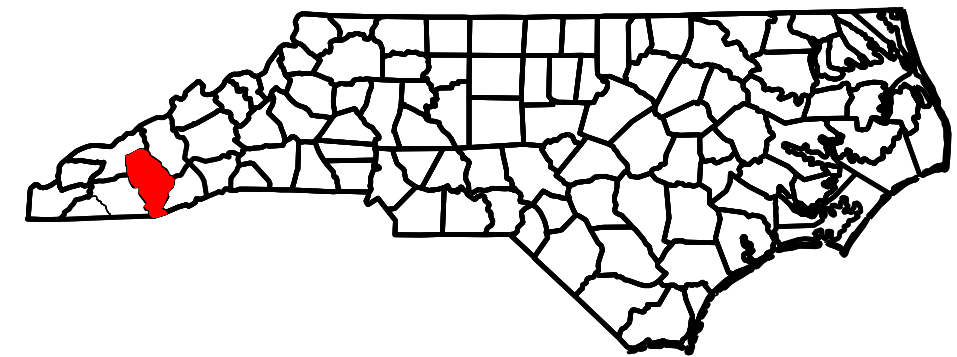
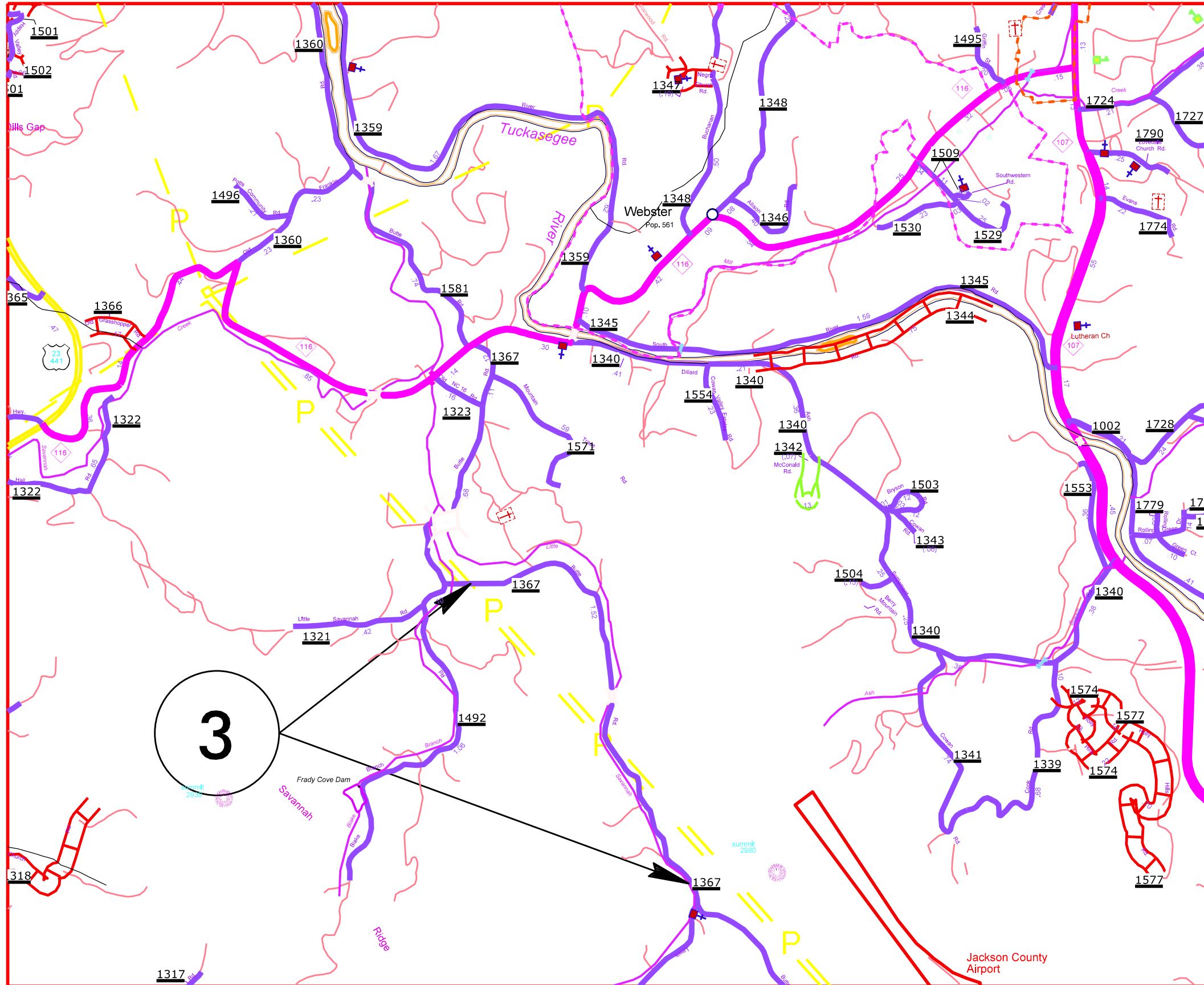
# 2011 CONTRACT RESURFACING JACKSON COUNTY

PROJECT REFERENCE NO.	SHEET NO.	
14CR.20501.9	2 OF 9	
STATE PROJECT	F.A. PROJECT NO.	DESCRIPTION
14CR.20501.9		
14CR.20871.8		



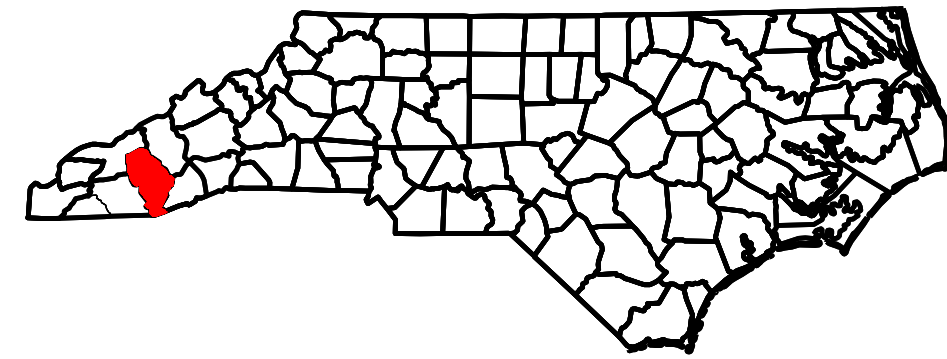
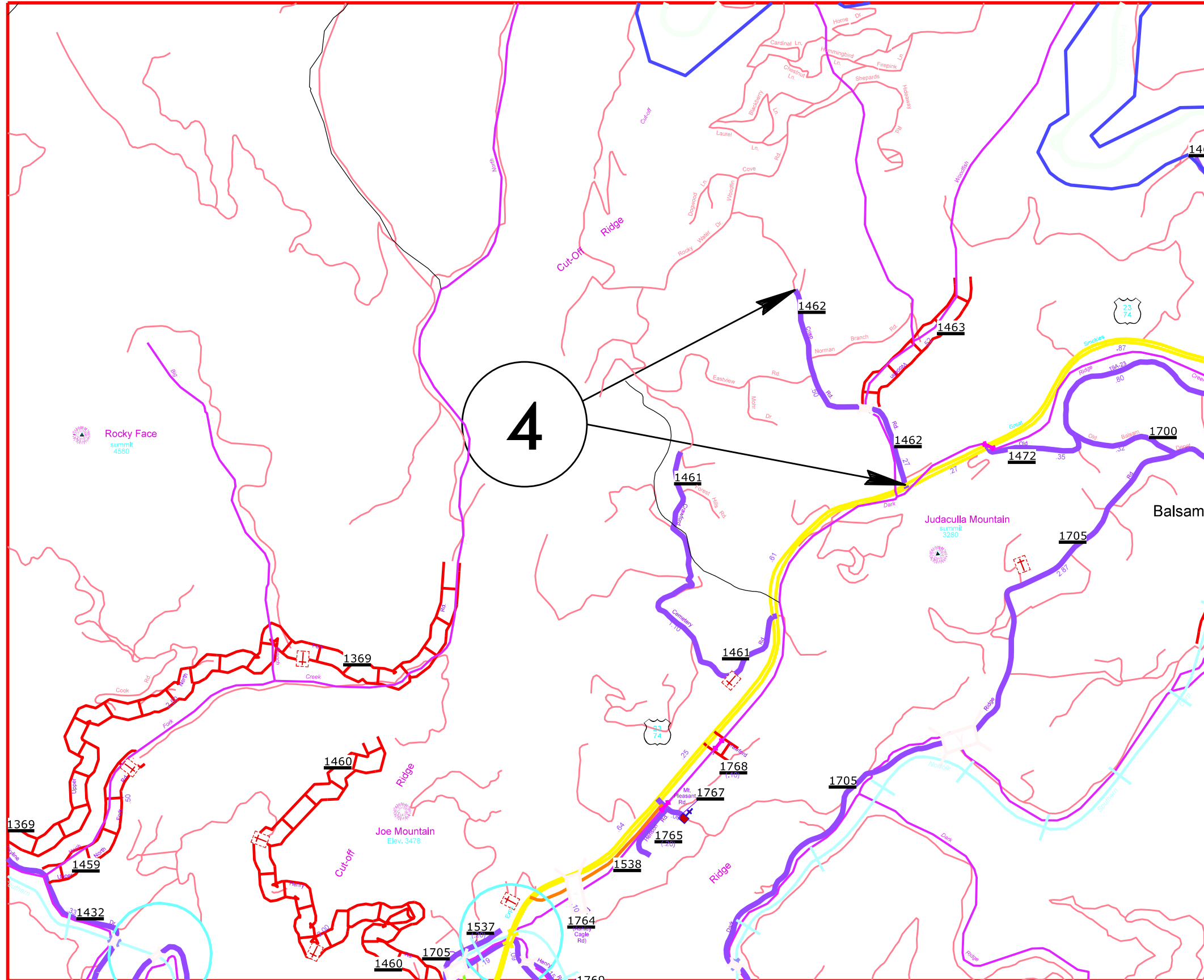
# 2011 CONTRACT RESURFACING JACKSON COUNTY

PROJECT REFERENCE NO.	SHEET NO.	
14CR.20501.9	3 OF 9	
STATE PROJECT	F.A. PROJECT NO.	DESCRIPTION
14CR.20501.9		
14CR.20871.8		



# 2011 CONTRACT RESURFACING JACKSON COUNTY

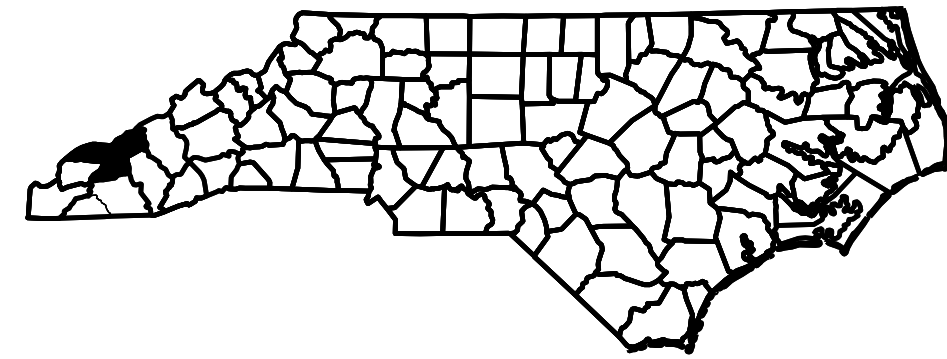
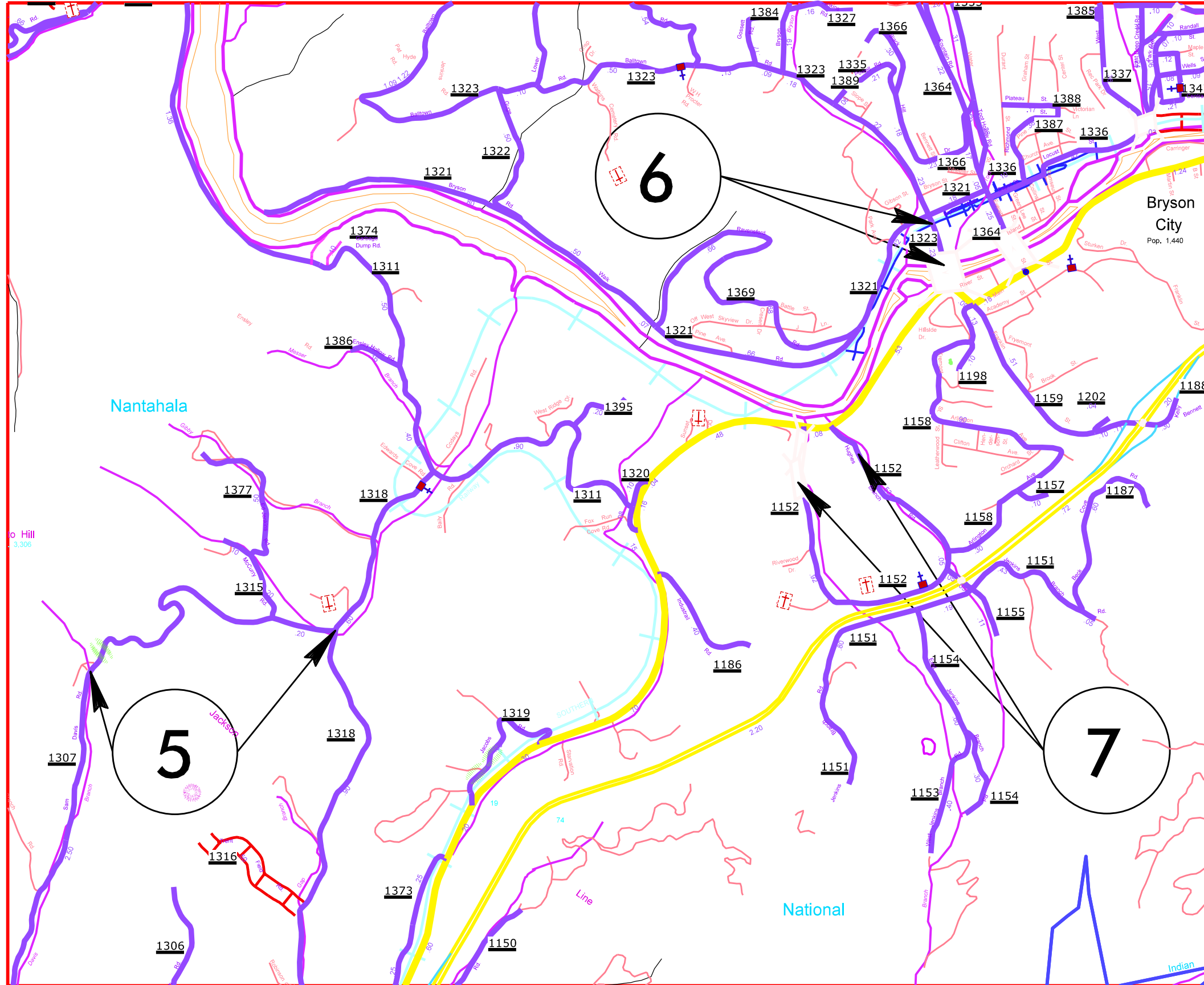
PROJECT REFERENCE NO.	SHEET NO.	
14CR.20501.9	4 OF 9	
STATE PROJECT	F.A. PROJECT NO.	DESCRIPTION
14CR.20501.9		
14CR.20871.8		





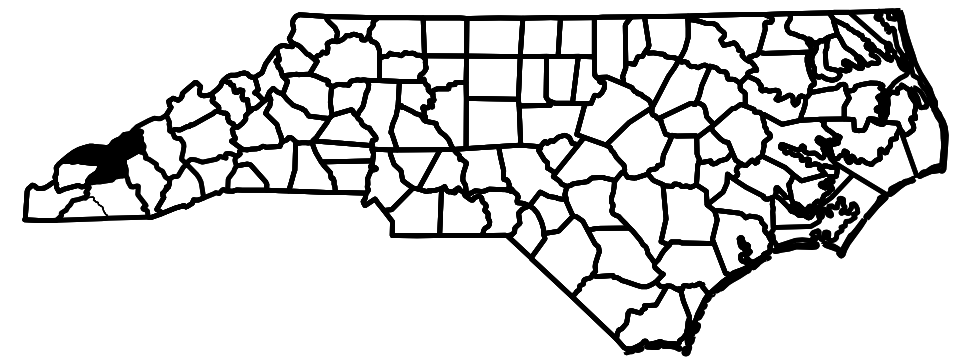
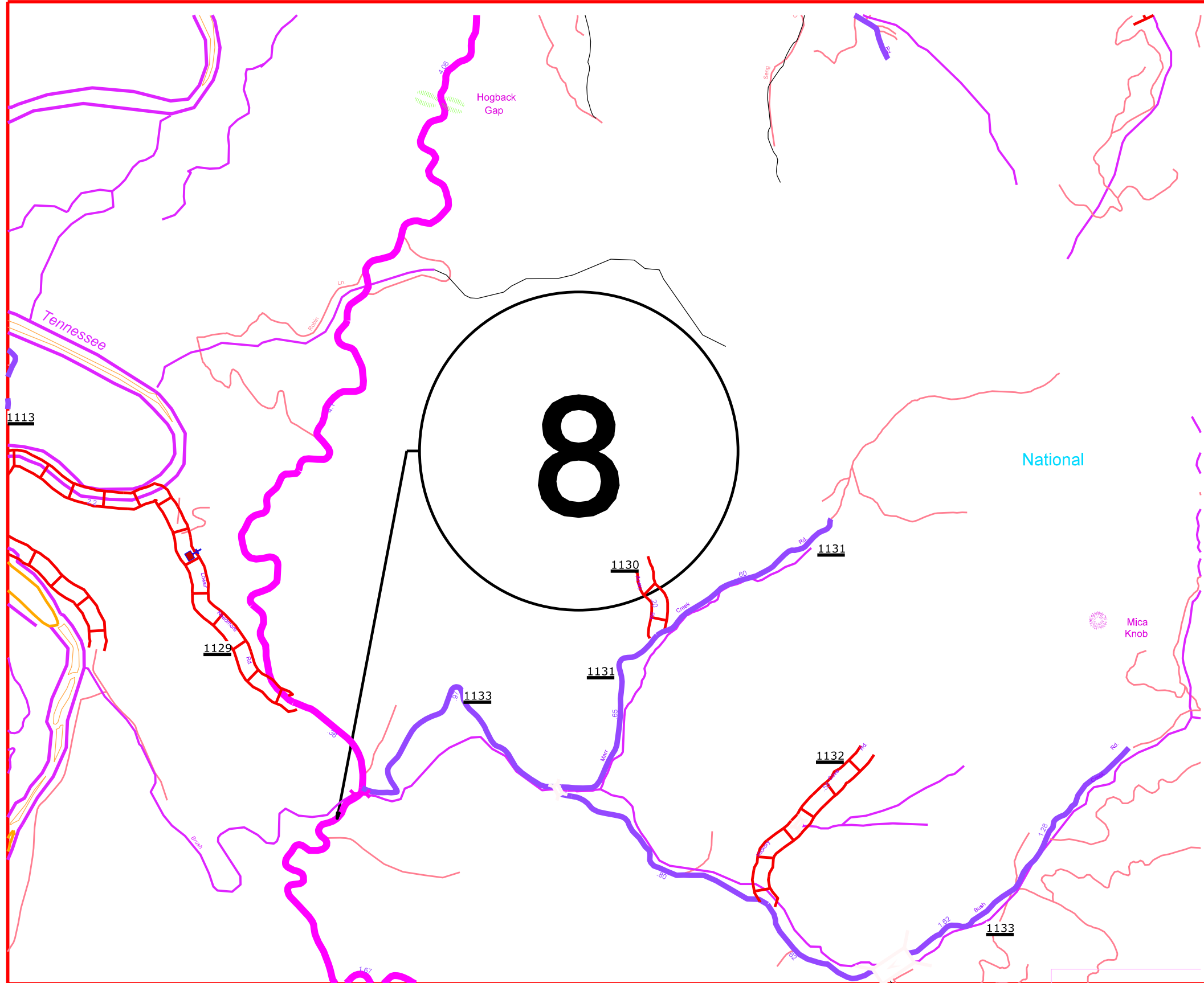
# 2011 CONTRACT RESURFACING SWAIN COUNTY

PROJECT REFERENCE NO.	SHEET NO.	
14CR.20501.9	5 OF 9	
STATE PROJECT	F.A. PROJECT NO.	DESCRIPTION
14CR.20501.9		
14CR.20871.8		



# 2012 CONTRACT RESURFACING SWAIN COUNTY

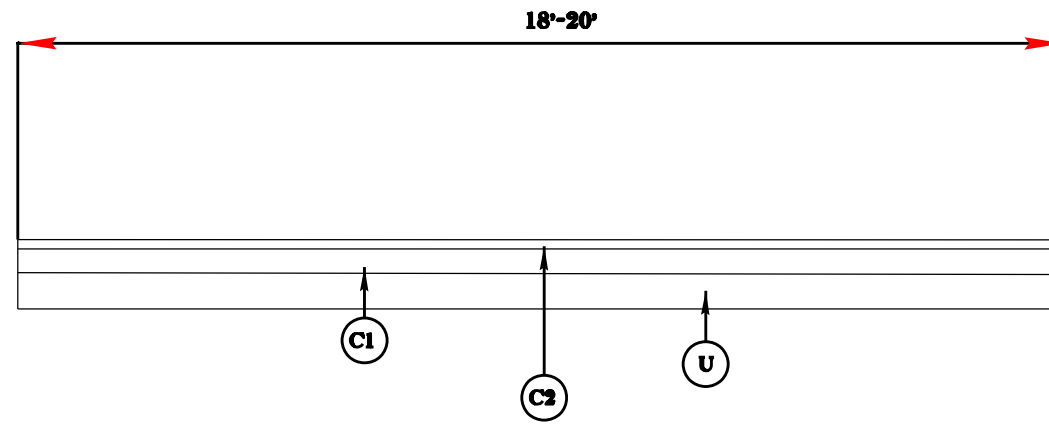
PROJECT REFERENCE NO.	SHEET NO.	
14CR.20501.9	1 OF 4	
STATE PROJECT	F.A. PROJECT NO.	DESCRIPTION
14CR.20501.9		
14CR.20871.8		



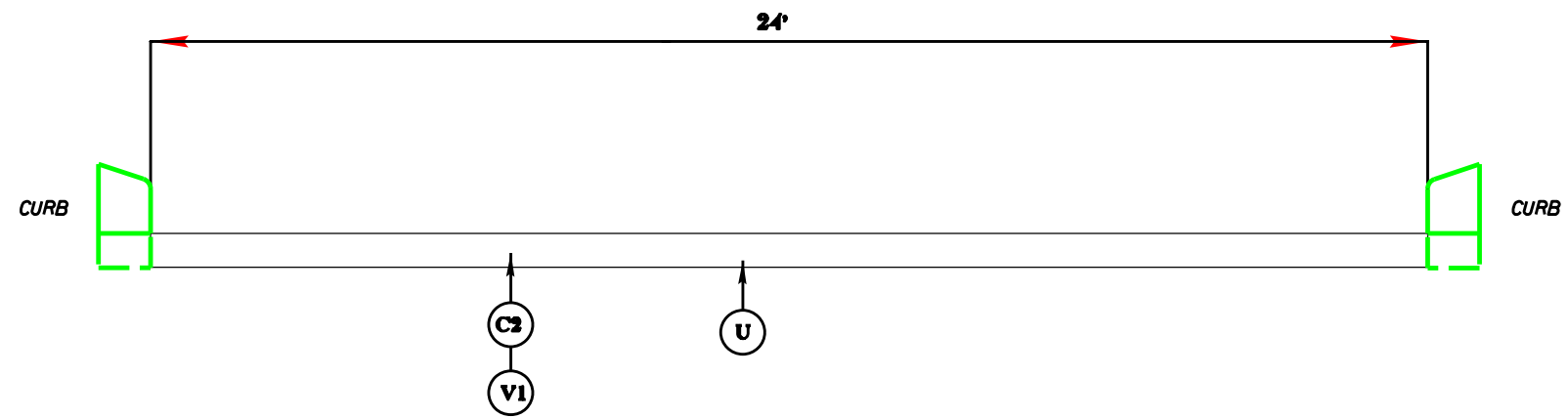
050197

PROJECT REFERENCE NO.		SHEET NO.
14CR.20501.9		6 OF 9
STATE PROJECT	F.A. PROJECT NO.	DESCRIPTION
14CR.20501.9		
14CR.20871.8		

# TYPICAL 1



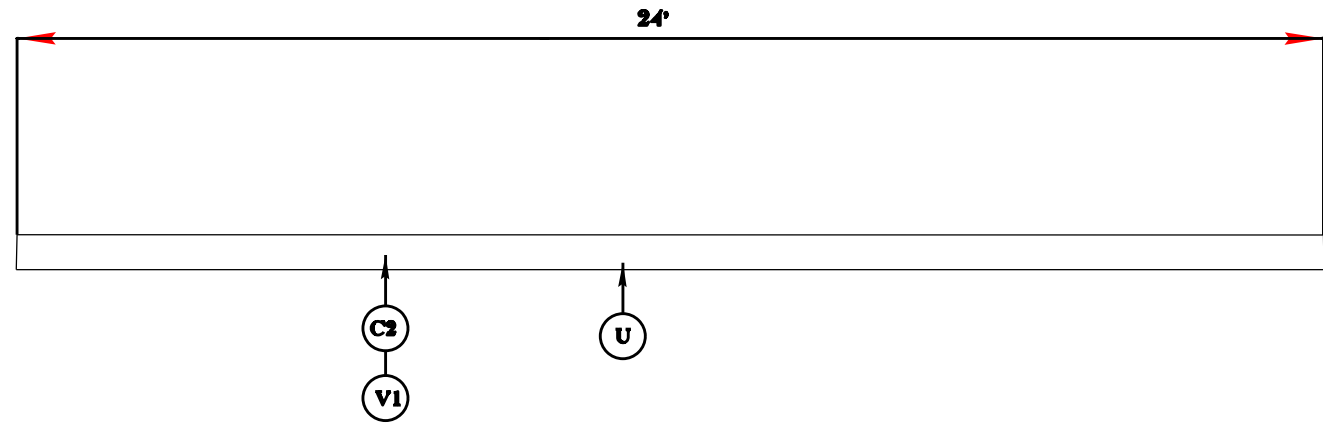
# TYPICAL 2



050197

PROJECT REFERENCE NO.		SHEET NO.
14CR.20501.9		7 OF 9
STATE PROJECT	F.A. PROJECT NO.	DESCRIPTION
14CR.20501.9		
14CR.20871.8		

# TYPICAL 3





050197

PROJECT REFERENCE NO.		SHEET NO.
14CR.20501.9		7 OF 9
STATE PROJECT	F.A. PROJECT NO.	DESCRIPTION
14CR.20501.9		
14CR.20871.8		

### SURFACING SCHEDULE

ITEM NO	DESCRIPTION
C1	ASPHALT CONCRETE SURFACE COURSE, TYPE SF9.5A, AT AN AVERAGE RATE OF 70 LBS. PER SQ. YD. ( 3/4")
C2	ASPHALT CONCRETE INTERMEDIATE COURSE, TYPE S9.5B, AT AN AVERAGE RATE OF 168 LBS. PER SQ. YD.(1 1/2")
V1	MILLING ASPHALT PAVEMENT 1 1/2" IN DEPTH AS DIRECTED BY THE PROJ. ENGINEER.
U	EXISTING ASPHALT PAVEMENT

PROJECT NO.	SHEET NO.	TOTAL NO.
14CR.20501.9, 14CR.20871.8 43377.3.1	10	11

## SUMMARY OF QUANTITIES

PROJECT NO	COUNTY	MAP NO	ROUTE	DESCRIPTION	TYP NO	FINAL SURFACE TESTING REQUIRED	LENGTH MI	WIDTH FT	1 1/2" MILLING SY	SURFACE COURSE, S9.5B TONS	SURFACE LEVELING COURSE, SF9.5A TONS	ASPHALT BINDER FOR PLANT MIX TONS	
14CR.20501.9	Jackson	1	SR-1157	FROM NC-107 TO INTERSECTION OF SR-1001	1	NO	1	19		999	579	99	
<b>TOTAL FOR MAP NO. 1</b>							<b>1</b>			<b>999</b>	<b>579</b>	<b>99</b>	
14CR.20501.9	Jackson	2	SR-1135	1.0 MILE EAST OF NC 107 AT PVT. CHG. TO .33 MILES EAST OF THE RESERVE AT CANOE CREEK AT PVT. CHG.	1	NO	1.5	20		1,577	653	138	
<b>TOTAL FOR MAP NO. 2</b>							<b>1.5</b>			<b>1,577</b>	<b>653</b>	<b>138</b>	
14CR.20501.9	Jackson	3	SR-1367	FROM .02 MILES EAST OF SR-1321 TO SR-1321	1	NO	1.4	20		1,472	15	89	
<b>TOTAL FOR MAP NO. 3</b>							<b>1.4</b>			<b>1,472</b>	<b>15</b>	<b>89</b>	
14CR.20501.9	Jackson	4	SR-1462	FROM US 23/74 TO END OF MAINTENANCE	1	NO	0.77	19		769	18	47	
<b>TOTAL FOR MAP NO. 4</b>							<b>0.77</b>			<b>769</b>	<b>18</b>	<b>47</b>	
<b>TOTAL FOR PROJ NO. 14CR.20501.9</b>							<b>4.67</b>			<b>4,817</b>	<b>1,265</b>	<b>373</b>	
14CR.20871.8	Swain	5	SR-1307	FROM SR-1318 TO FULLER MTN. RD. AT PVT. CHG	1	NO	0.91	18		853	50	55	
<b>TOTAL FOR MAP NO. 5</b>							<b>0.91</b>			<b>853</b>	<b>50</b>	<b>55</b>	
14CR.20871.8	Swain	6	SR-1323	FROM BRIDGE # 153 TO INTERSECTION OF SR-1321	2	NO	0.22	24	3,098	277		17	
<b>TOTAL FOR MAP NO. 6</b>							<b>0.22</b>		<b>3,098</b>	<b>277</b>		<b>17</b>	
14CR.20871.8	Swain	7	SR-1152	FROM US 19 AT PVT CHG. .18 MILES TO BRIDGE# 42	1	NO	1.2	19		1,210	85	78	
<b>TOTAL FOR MAP NO. 7</b>							<b>1.2</b>			<b>1,210</b>	<b>85</b>	<b>78</b>	
<b>TOTAL FOR PROJ NO. 14CR.20871.8</b>							<b>2.33</b>		<b>3,098</b>	<b>2,340</b>	<b>135</b>	<b>150</b>	
43377.3.1	Swain	8	NC 28	0.15 SOUTH OF S.R. 1133	3	NO	0.038	24	535	49		3	
<b>TOTAL FOR MAP NO. 8</b>							<b>0.038</b>		<b>535</b>	<b>49</b>		<b>3</b>	
<b>TOTAL FOR PROJ NO. 43377.3.1</b>							<b>0.038</b>		<b>535</b>	<b>49</b>		<b>3</b>	
<b>GRAND TOTAL</b>								<b>7.038</b>		<b>3,633</b>	<b>7,206</b>	<b>1,400</b>	<b>526</b>

PROJECT NO.	SHEET NO.	TOTAL NO.
14CR.20501.9, 14CR.20871.8 43377.3.1	11	11

## THERMOPLASTIC AND PAINT QUANTITIES

PROJECT NO	COUNTY	MAP NO	ROUTE	DESCRIPTION	LENGTH	WIDTH	481000000-E		490500000-N
							4" WHITE PAINT LF	4" YELLOW PAINT LF	YELLOW & YELLOW SNOW PLOWABLE MARKERS EA
14CR.20501.9	Jackson	1	SR-1157	FROM NC-107 TO INTERSECTION OF SR-1001	1	19	21,520	23,760	
<b>TOTAL FOR MAP NO. 1</b>					<b>1</b>		<b>21,520</b>	<b>23,760</b>	
14CR.20501.9	Jackson	2	SR-1135	1.0 MILE EAST OF NC 107 AT PVT. CHG. TO .33 MILES EAST OF THE RESERVE AT CANOE CREEK AT PVT. CHG.	1.5	20	32,280	35,640	
<b>TOTAL FOR MAP NO. 2</b>					<b>1.5</b>		<b>32,280</b>	<b>35,640</b>	
14CR.20501.9	Jackson	3	SR-1367	FROM .02 MILES EAST OF SR-1321 TO SR-1321	1.4	20	30,128	33,264	92
<b>TOTAL FOR MAP NO. 3</b>					<b>1.4</b>		<b>30,128</b>	<b>33,264</b>	<b>92</b>
14CR.20501.9	Jackson	4	SR-1462	FROM US 23/74 TO END OF MAINTENANCE	0.77	19	16,570	18,295	
<b>TOTAL FOR MAP NO. 4</b>					<b>0.77</b>		<b>16,570</b>	<b>18,295</b>	
<b>TOTAL FOR PROJ NO. 14CR.20501.9</b>					<b>4.67</b>		<b>100,498</b>	<b>110,959</b>	<b>92</b>
							<b>211,457</b>		
14CR.20871.8	Swain	5	SR-1307	FROM SR-1318 TO FULLER MTN. RD. AT PVT. CHG	0.91	18	19,368	19,008	
<b>TOTAL FOR MAP NO. 5</b>					<b>0.91</b>		<b>19,368</b>	<b>19,008</b>	
14CR.20871.8	Swain	6	SR-1323	FROM BRIDGE # 153 TO INTERSECTION OF SR-1321	0.22	24	4,734	4,604	
<b>TOTAL FOR MAP NO. 6</b>					<b>0.22</b>		<b>4,734</b>	<b>4,604</b>	
14CR.20871.8	Swain	7	SR-1152	FROM US 19 AT PVT CHG. .18 MILES TO BRIDGE# 42	1.2	19	25,824	24,840	
<b>TOTAL FOR MAP NO. 7</b>					<b>1.2</b>		<b>25,824</b>	<b>24,840</b>	
<b>TOTAL FOR PROJ NO. 14CR.20871.8</b>					<b>2.33</b>		<b>49,926</b>	<b>48,452</b>	
							<b>98,378</b>		
43377.3.1	Swain	8	NC 28	0.15 SOUTH OF S.R. 1133	0.038	24	818	502	
<b>TOTAL FOR MAP NO. 8</b>					<b>0.038</b>		<b>818</b>	<b>502</b>	
<b>TOTAL FOR PROJ NO. 43377.3.1</b>					<b>0.038</b>		<b>818</b>	<b>502</b>	
<b>GRAND TOTAL</b>					<b>7.038</b>		<b>151,242</b>	<b>159,913</b>	<b>92</b>
							<b>311,155</b>		