

**This electronic collection of documents is provided
for the convenience of the user
and is Not a Certified Document –**

**The documents contained herein were originally issued
and sealed by the individuals whose names and license
numbers appear on each page, on the dates appearing
with their signature on that page.**

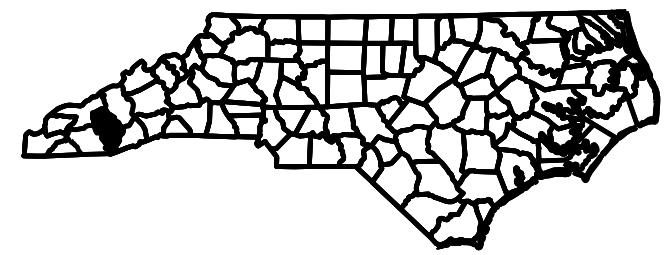
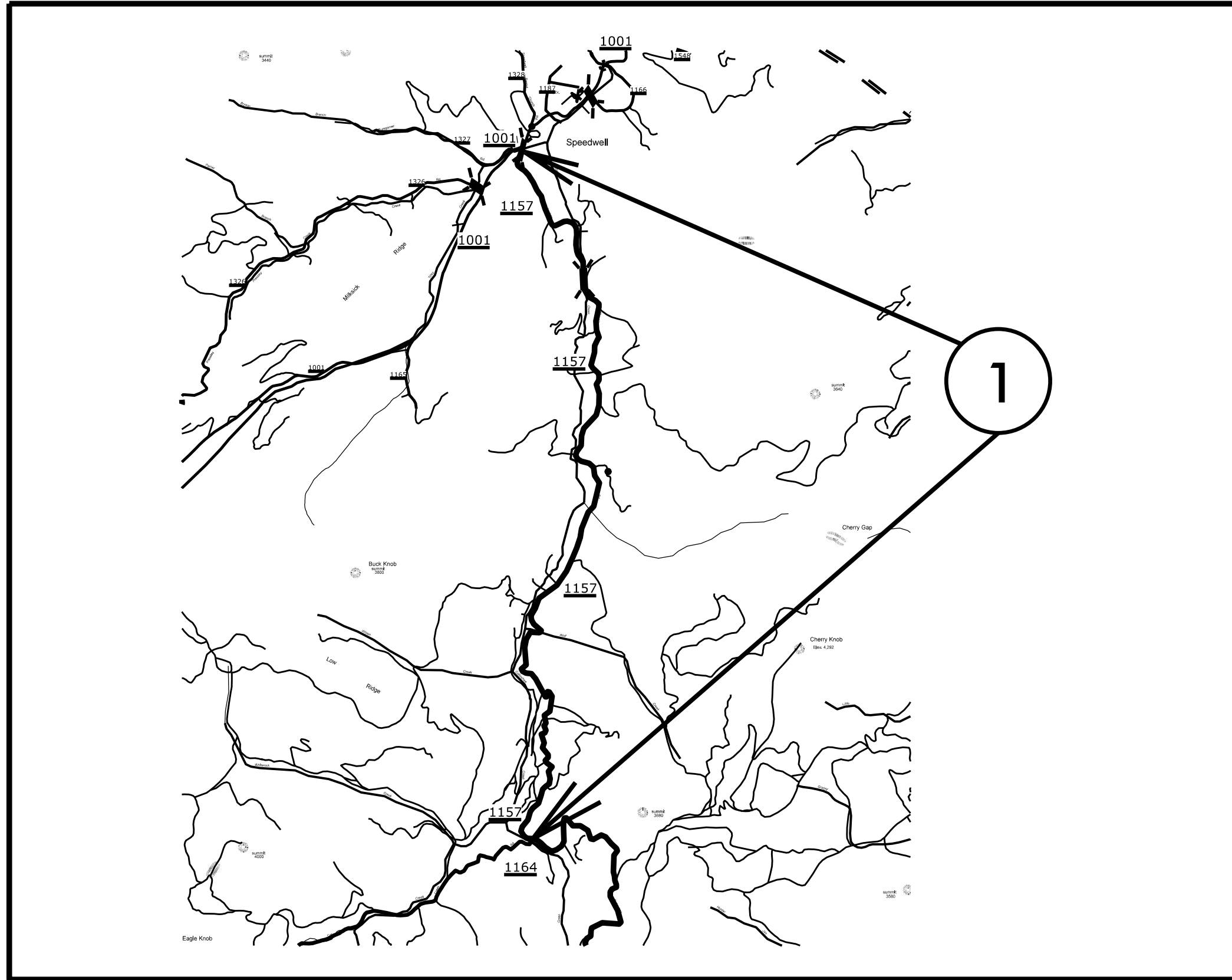
**This file or an individual page
shall not be considered a certified document.**

JACKSON COUNTY

PROJECT REFERENCE NO.		SHEET NO.	
DN00505		1	
STATE PROJECT	F.A. PROJECT NO.	DESCRIPTION	
2016CPT.14.20.20501.1			

TIP PROJECT: N/A

CONTRACT: DN00505

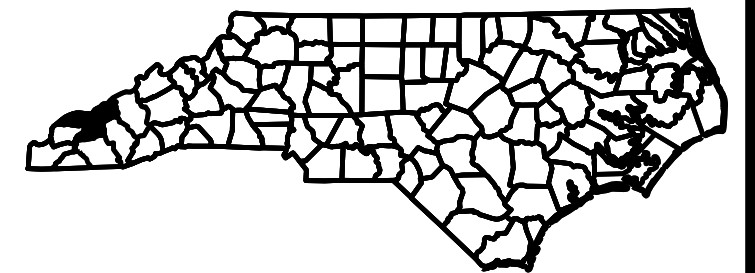
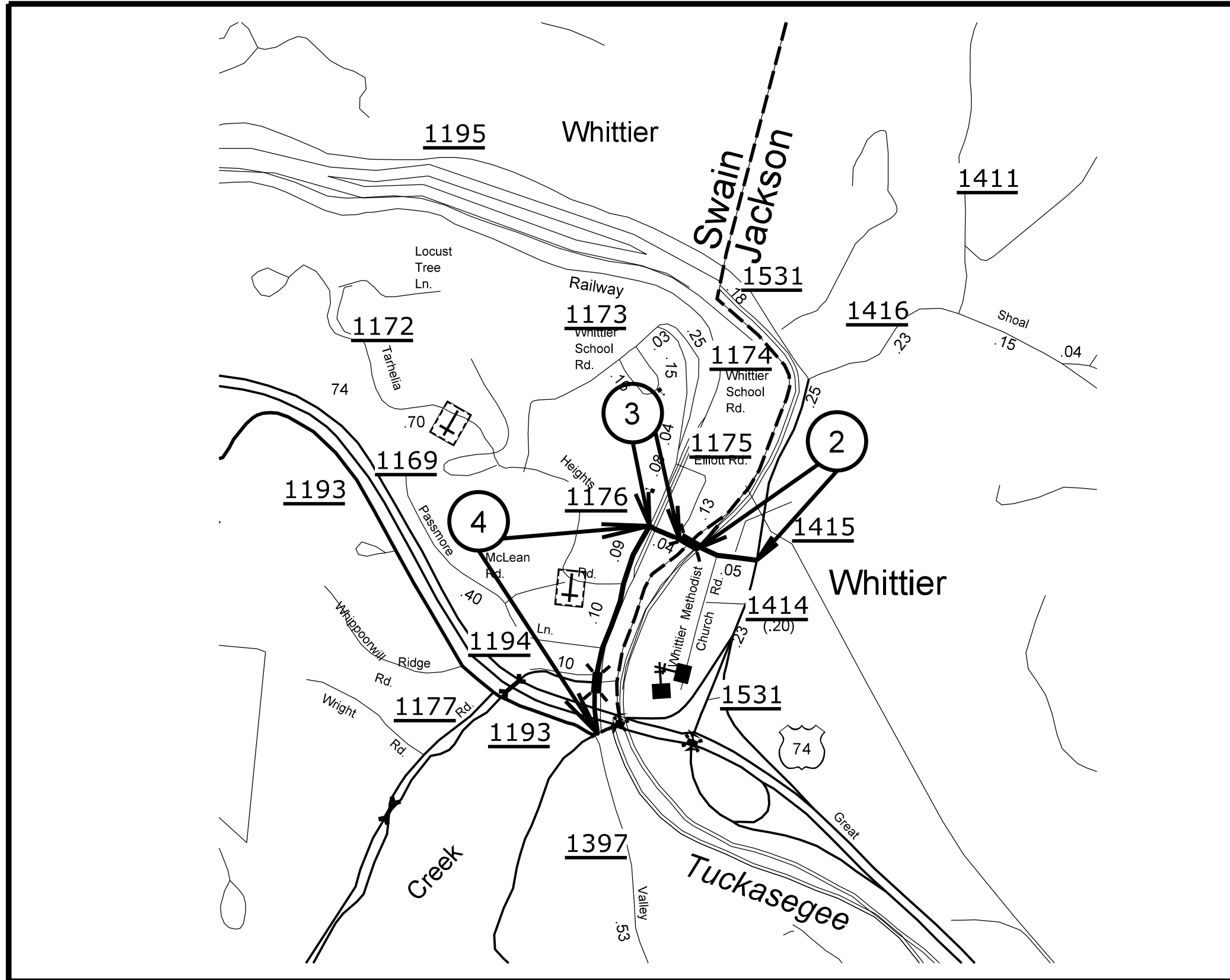


TIP PROJECT: N/A

CONTRACT: DN00505

SWAIN COUNTY / JACKSON CO

PROJECT REFERENCE NO.		SHEET NO.
DN00505		2
STATE PROJECT	F.A. PROJECT NO.	DESCRIPTION
2016CPT.14.20.20871		
2016CPT.14.20.20501		

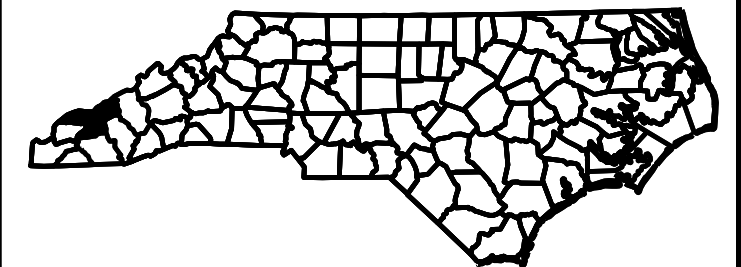
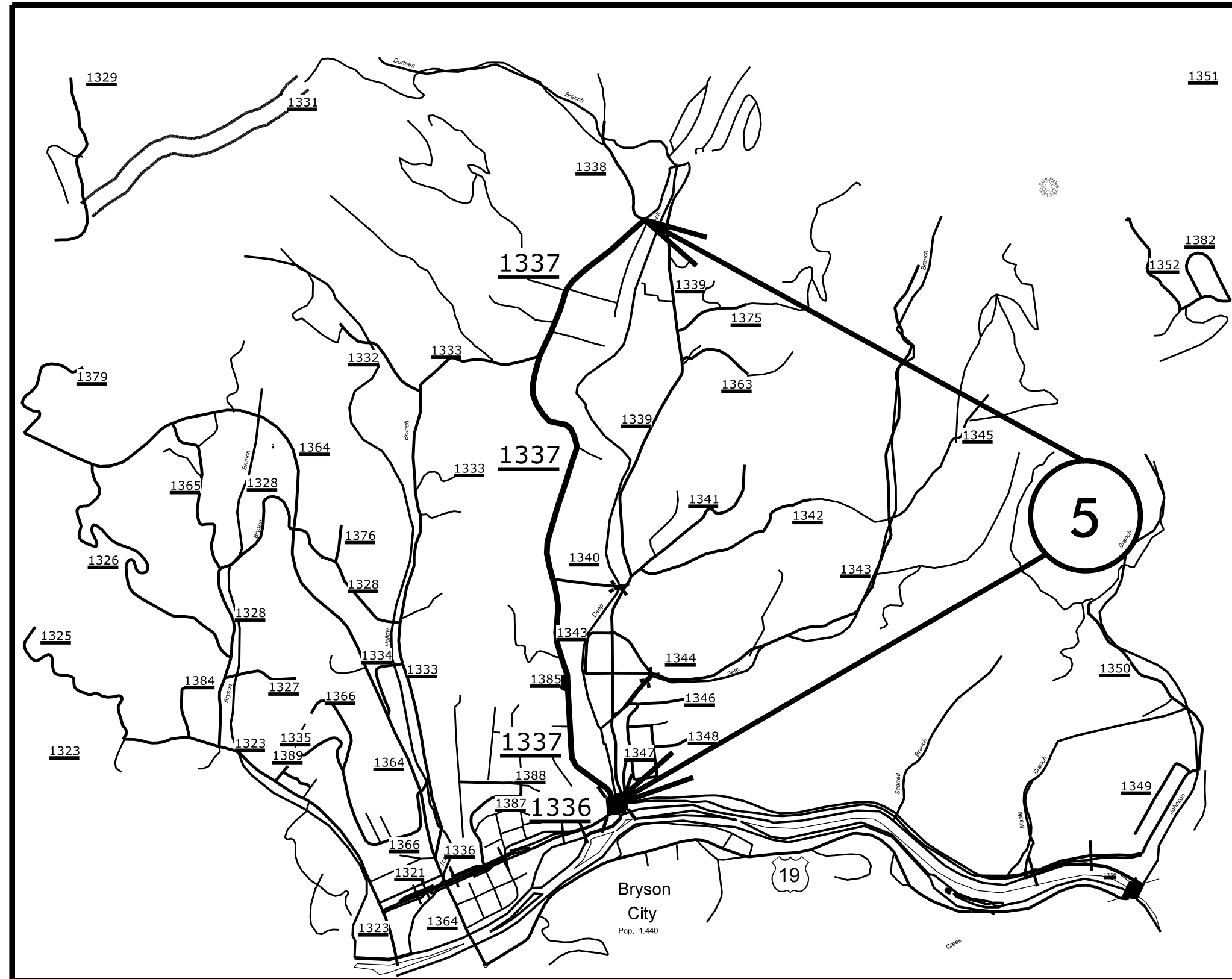


TIP PROJECT: N/A

CONTRACT: DN00505

SWAIN COUNTY

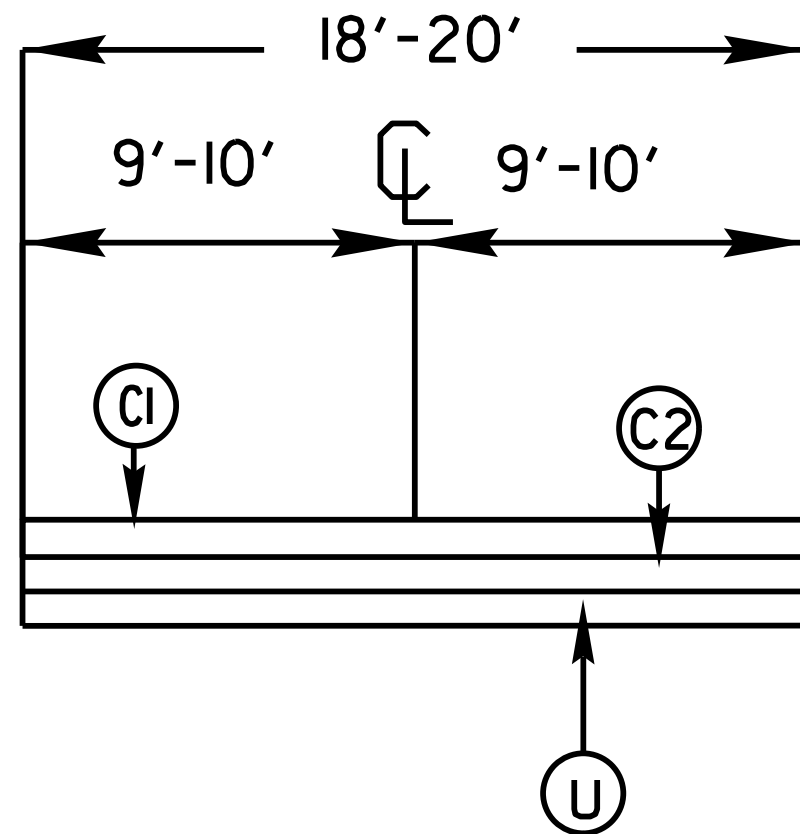
PROJECT REFERENCE NO.		SHEET NO.
DN00505		3
STATE PROJECT	F.A. PROJECT NO.	DESCRIPTION
2016CPT.14.20.20871.1		
2016CPT.14.20.20501.1		



PROJECT REFERENCE NO.		SHEET NO.
DN00505		4
STATE PROJECT	F.A. PROJECT NO.	DESCRIPTION
2016CPT.14.20.20871.1		
2016CPT.14.20.20501.1		

SURFACING SCHEDULE

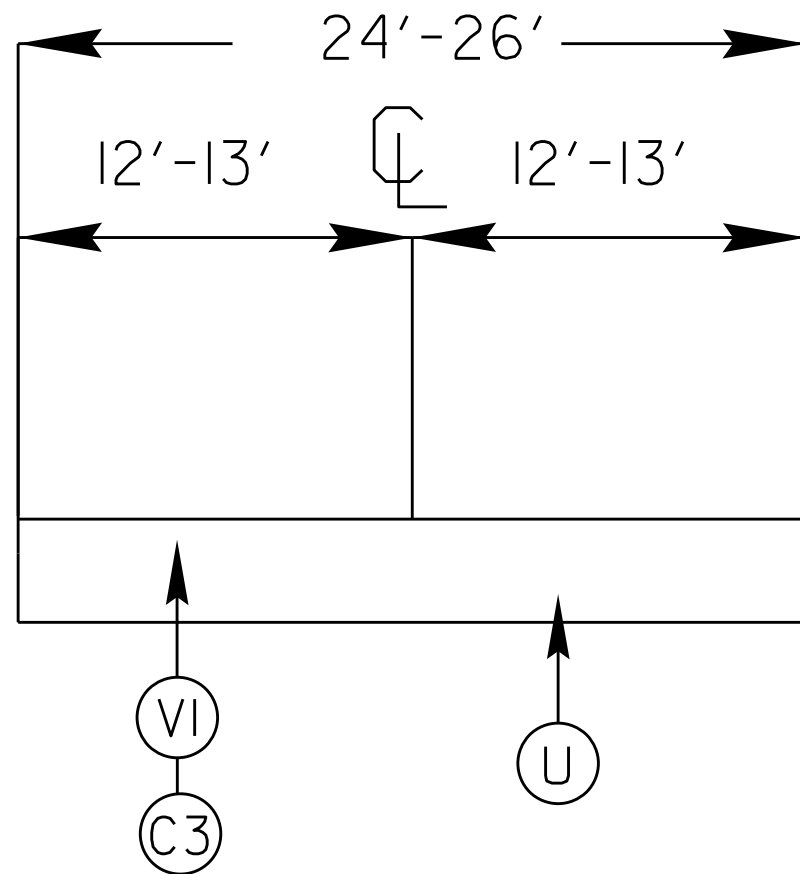
TYPICAL 1



ITEM NO	DESCRIPTION
C1	PROP. APPROX. 1 1/4" ASPHALT CONCRETE SURFACE COURSE, TYPE SF9.5A AT AN AVERAGE RATE OF 137.5 LBS.PER.SQ.YD
C2	PROP. APPROX. 3/4 " ASPHALT CONCRETE SURFACE COURSE, (LEVELING) TYPE SF9.5A AT AN AVERAGE RATE OF 70 LBS PER SQ.YD.
C3	PROP. APPROX. 2" ASPHALT CONCRETE SURFACE COURSE, TYPE SF9.5A AT AN AVERAGE RATE OF 220 LBS.PER.SQ.YD
V1	MILLED ASPHALT PAVEMENT 2" IN DEPTH IN LOCATIONS AS DIRECTED BY PROJECT ENGINEER
U	EXISTING ASPHALT

PROJECT REFERENCE NO.		SHEET NO.
DN00505		5
STATE PROJECT	F.A. PROJECT NO.	DESCRIPTION
2016CPT.14.20.20501.1		
2016CPT.14.2020871.1		

TYPICAL 2



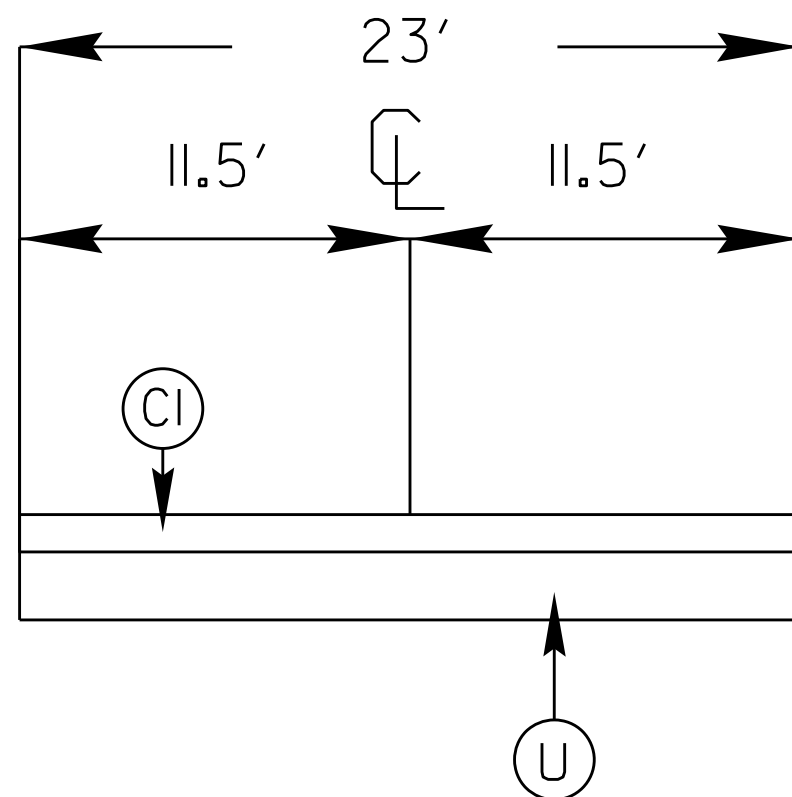
SURFACING SCHEDULE

ITEM NO	DESCRIPTION
C1	PROP. APPROX. 1 1/4" ASPHALT CONCRETE SURFACE COURSE, TYPE SF9.5A AT AN AVERAGE RATE OF 137.5 LBS.PER.SQ.YD
C2	PROP. APPROX. 3/4 " ASPHALT CONCRETE SURFACE COURSE, (LEVELING) TYPE SF9.5A AT AN AVERAGE RATE OF 70 LBS PER SQ.YD.
C3	PROP. APPROX. 2" ASPHALT CONCRETE SURFACE COURSE, TYPE SF9.5A AT AN AVERAGE RATE OF 220 LBS.PER.SQ.YD
V1	MILLED ASPHALT PAVEMENT 2" IN DEPTH IN LOCATIONS AS DIRECTED BY PROJECT ENGINEER
U	EXISTING ASPHALT

PROJECT REFERENCE NO.		SHEET NO.
DN00505		6
STATE PROJECT	F.A. PROJECT NO.	DESCRIPTION
2016CPT.14.20.20501.1		
2016CPT.14.20.20871.1		

SURFACING SCHEDULE

TYPICAL 3



ITEM NO	DESCRIPTION
C1	PROP. APPROX. 1 1/4" ASPHALT CONCRETE SURFACE COURSE, TYPE SF9.5A AT AN AVERAGE RATE OF 137.5 LBS.PER.SQ.YD
C2	PROP. APPROX. 3/4 " ASPHALT CONCRETE SURFACE COURSE, (LEVELING) TYPE SF9.5A AT AN AVERAGE RATE OF 70 LBS PER SQ.YD.
C3	PROP. APPROX. 2" ASPHALT CONCRETE SURFACE COURSE, TYPE SF9.5A AT AN AVERAGE RATE OF 220 LBS.PER.SQ.YD
V1	MILLED ASPHALT PAVEMENT 2" IN DEPTH IN LOCATIONS AS DIRECTED BY PROJECT ENGINEER
U	EXISTING ASPHALT

PROJECT NO.	SHEET NO.	TOTAL NO.
14.20.20501.1, 2016CPT.2	7	

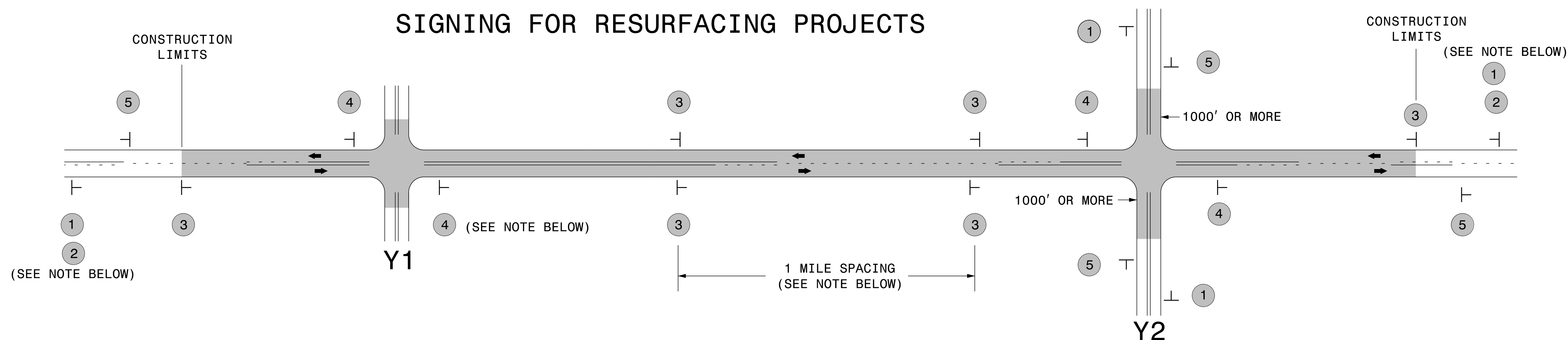
SUMMARY OF QUANTITIES

PROJECT NO	COUNTY	MAP NO	ROUTE	DESCRIPTION	TYP	LANES	LANE TYPE	FINAL SURFACE TESTING REQUIRED	WARM MIX ASPHALT REQUIRED	LENGTH MI	WIDTH FT	2" MILLING SY	INCIDENTAL MILLING SY	SURFACE COURSE, SF9.5A TONS	SURFACE COURSE, (LEVELING), SF9.5A TN	ASPHALT BINDER FOR PLANT MIX TONS	ADJ. OF METER OR VALVE BOX EA
2016CPT.14.20.20501.1	Jackson	1	SR-1157 CULLOWEE MTN	FROM SR-1164 TO SR-1001	1	2	2WU	NO	NO	4.35	20		225	3,880	500	290	
TOTAL FOR MAP NO. 1										4.35			225	3,880	500	290	
2016CPT.14.20.20501.1	Jackson	2	SR-1415 MAIN ST	FROM SR-1531 TO BRIDGE # 28	2	2	2WU	NO	NO	0.06	24	1,350		108		7	3
TOTAL FOR MAP NO. 2										0.06		1,350		108		7	3
TOTAL FOR PROJ NO. 2016CPT.14.20.20501.1										4.41		1,350	225	3,988	500	297	3
2016CPT.20.20871.1	Swain	3	SR-1173 WHITTIER DEPOT	FROM SR-1176 TO SR-1193	2	2	2WU	NO	NO	0.26	26	3,966	100	492		33	
TOTAL FOR MAP NO. 3										0.26		3,966	100	492		33	
2016CPT.20.20871.1	Swain	4	SR-1176 MAIN STREET	FROM BRIDGE #28 TO R/R TRACKS AT SR-1173	3	2	2WU	NO	NO	0.03	23		100	37		2	
TOTAL FOR MAP NO. 4										0.03			100	37		2	
2016CPT.20.20871.1	Swain	5	SR-1337 WEST DEEP CREEK	FROM SR-1336 TO GREAT SMOKY MTN NATIONAL PARK	1	2	2WU	NO	NO	1.9	18		100	1,484	1,129	167	
TOTAL FOR MAP NO. 5										1.9			100	1,484	1,129	167	
TOTAL FOR PROJ NO. 2016CPT.20.20871.1										2.19		3,966	300	2,013	1,129	202	
GRAND TOTAL										6.6		5,316	525	6,001	1,629	499	3

THERMOPLASTIC AND PAINT QUANTITIES

PROJECT NO	COUNTY	MAP NO	ROUTE	DESCRIPTION	TYP	LANES	LANE TYPE	LENGTH	WIDTH	4400000000-E	4457000000-N	4810000000-E		830000000	4835000000-E	4840000000-N	
										STATIONARY WORK ZONE SIGN	TEMPORARY TRAFFIC CONTROL	4" WHITE PAINT	4" YELLOW PAINT	16" WHITE PAINT	24" WHITE PAINT	PAINT MSG RXR	
NO		NO			NO					SF	LS	LF	LF	LF	LF	EA	
2016CPT.14.20.20501.1	Jackson	1	SR-1157 CULLOWEE MTN	FROM SR-1164 TO SR-1001	1	2	2WU	4.35	20	487.0	0.5	93,612	57,420		100		
TOTAL FOR MAP NO. 1										4.35	0.5	93,612	57,420		100		
2016CPT.14.20.20501.1	Jackson	2	SR-1415 MAIN ST	FROM SR-1531 TO BRIDGE # 28	2	2	2WU	0.06	24	33.0		1,291	792	100	50	2	
TOTAL FOR MAP NO. 2										0.06		1,291	792	100	50	2	
TOTAL FOR PROJ NO. 2016CPT.14.20.20501.1										4.41	0.5	94,903	58,212	100	150	2	
												153,115					
2016CPT.20.20871.1	Swain	3	SR-1173 WHITTIER DEPOT	FROM SR-1176 TO SR-1193	2	2	2WU	0.26	26	33.0	0.5	5,595	6,178		100		
TOTAL FOR MAP NO. 3										0.26	0.5	5,595	6,178		100		
2016CPT.20.20871.1	Swain	4	SR-1176 MAIN STREET	FROM BRIDGE #28 TO R/R TRACKS AT SR-1173	3	2	2WU	0.03	23	33.0		646	713	50	25	2	
TOTAL FOR MAP NO. 4										0.03		646	713	50	25	2	
2016CPT.20.20871.1	Swain	5	SR-1337 WEST DEEP CREEK	FROM SR-1336 TO GREAT SMOKY MTN NATIONAL PARK	1	2	2WU	1.9	18	213.0		40,888	45,144		200		
TOTAL FOR MAP NO. 5										1.9		40,888	45,144		200		
TOTAL FOR PROJ NO. 2016CPT.20.20871.1										2.19	0.5	47,129	52,035	50	325	2	
												99,164					
GRAND TOTAL										6.6	1	142,032	110,247	150	475	4	
												252,279					

SIGNING FOR RESURFACING PROJECTS



LEGEND	
┆	STATIONARY SIGN
←	DIRECTION OF TRAFFIC FLOW

MAINLINE (-L-) SIGNING

-Y- LINE SIGNING

SIGNING NOTES AND PLACEMENT PER DIRECTION	MAINLINE (-L-) SIGNING		-Y- LINE SIGNING	
	1	 W20-1 48" X 48"	PLACE 1000' PRIOR TO BEGINNING OF CONSTRUCTION LIMITS. ONLY USED ON -Y- LINES IF RESURFACING LIMITS EXTEND 1000' ALONG -Y- LINE.	<p>NO REQUIRED STATIONARY SIGNING FOR THE FOLLOWING -Y- LINE CONDITIONS:</p> <ol style="list-style-type: none"> 1) LESS THAN 1000' OF RESURFACING ALONG -Y- LINE 2) SUBDIVISION ROADS 3) DEAD END ROADS <p>WHEN PAVING/CONSTRUCTION ACTIVITIES PROCEED ACROSS AN UNSIGNED -Y- LINE, ADVANCE WARNING PORTABLE SIGNS SHALL BE USED ALONG THE -Y- LINE AS SHOWN BELOW. REMOVE UPON COMPLETION OF WORK.</p> <div style="display: flex; justify-content: space-around;"> <div style="text-align: center;"> W20-1 48" X 48" </div> <div style="text-align: center;"> W20-7 A 48" X 48" </div> </div> <p>PLACED 500' IN ADVANCE OF FLAGGER. PLACED 250' IN ADVANCE OF FLAGGER.</p>
	2	 W7-3aP 24" X 18"	#2 SIGN ONLY USED WHEN RESURFACING LIMITS ARE 2 OR MORE MILES IN LENGTH. ROUND UP TO NEXT WHOLE NUMBER. (NO FRACTIONAL OR DECIMAL NUMBERS)	
	3	 SP 13107 48" X 48"	PLACE INITIALLY AT THE CONSTRUCTION LIMITS AND SPACED 1 MILE APART THEREAFTER. IF NO -Y- LINES EXIST, PLACE 2ND SET 1/2 MILE FROM THE CONSTRUCTION LIMITS AND THEN SPACE 1 MILE THEREAFTER.	
	4	 SP 13106 48" X 48"	THESE ARE FOR -Y- LINES THAT ARE "THROUGH" ROADWAYS. DEAD END AND SUBDIVISION ROADS ARE NOT "THROUGH" ROADWAYS. INSTALL 500' +/- FROM EACH -Y- LINE APPROACH AS SHOWN ABOVE. FOR MULTIPLE -Y- LINES THAT ARE SEPARATED BY 0.25 MILES OR LESS, TREAT AS A SINGLE UNIT AND INSTALL WITHIN 500' OF EACH APPROACH. A MAXIMUM OF 2 SIGN SETS PER MILE. DO NOT INSTALL WHEN -Y- LINES ARE WITHIN 0.5 MILES FROM "END ROAD WORK" SIGN.	
5	 G20-2 A 48" X 24"	PLACE 500' FOLLOWING THE END OF CONSTRUCTION LIMITS.		

3/19/2015
 C:\Users\rmgarrrett\Downloads\Resurfacing_AdvWarn_2Ln (2).dgn
 User:rmgarrrett

**RESURFACING
ADVANCE WARNING SIGNS
FOR
RURAL AND SUBURBAN
2 LANE ROADWAYS**