



TIP PROJECT: N/A

CONTRACT: DN00717

# SWAIN COUNTY

PROJECT REFERENCE NO.		SHEET NO.
2021CPT 14.02.2087/1		2
STATE PROJECT	F.A. PROJECT NO.	DESCRIPTION
		DN00717

MAP 2



FROM

TO

MAP 3



FROM

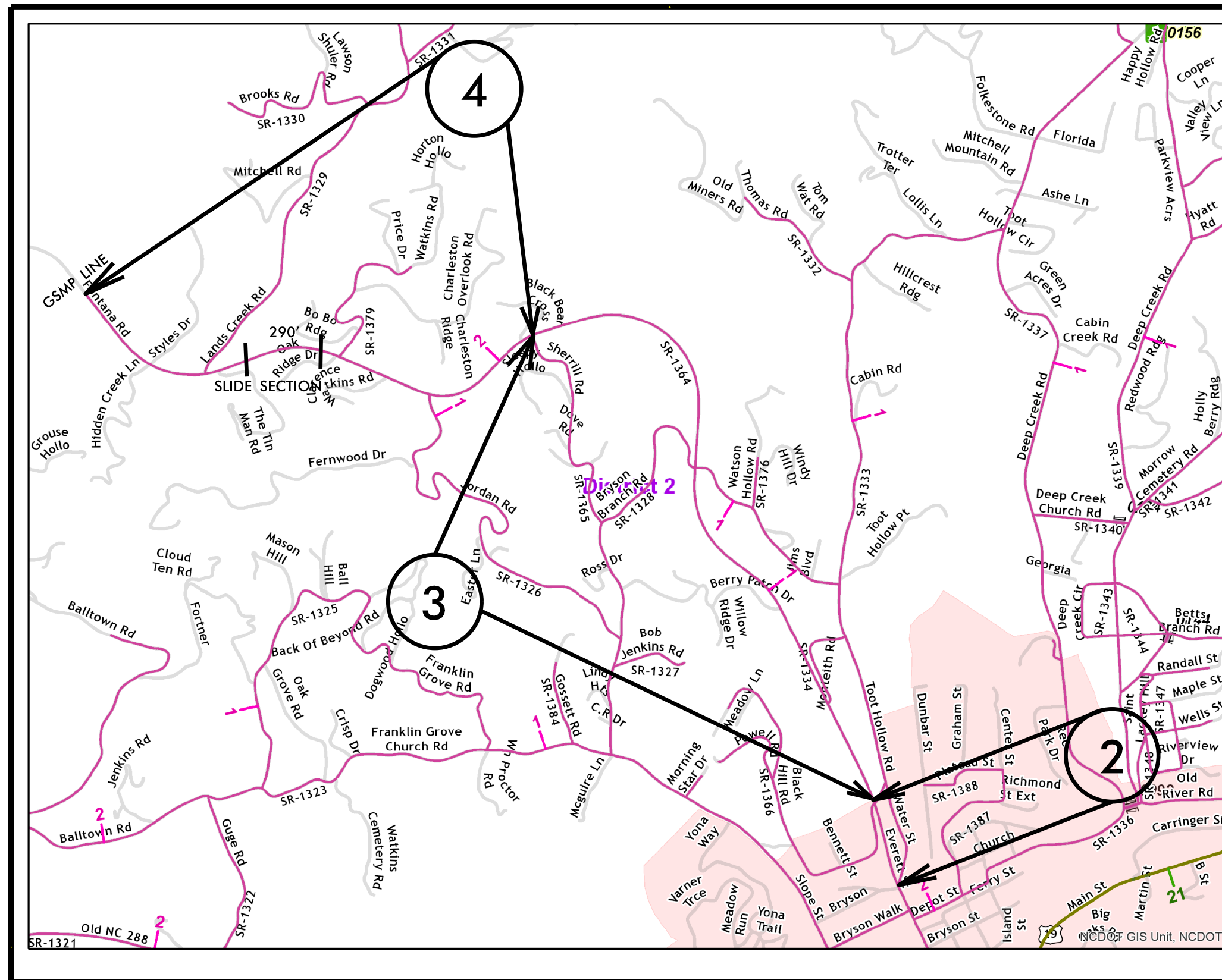
TO

MAP 4



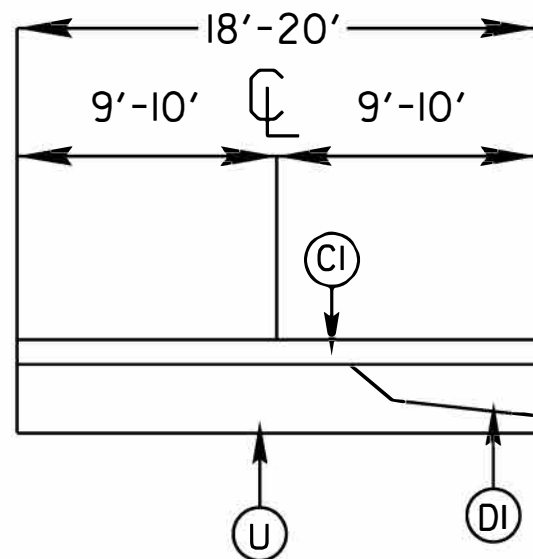
FROM

TO

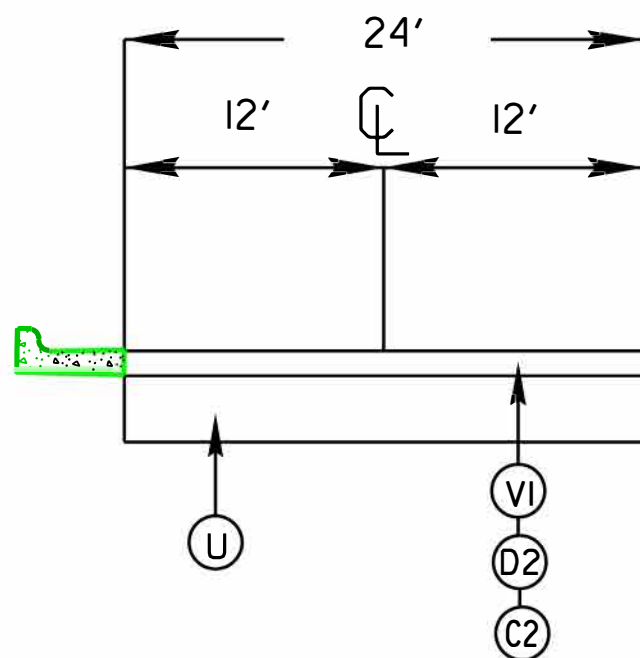


PROJECT REFERENCE NO.		SHEET NO.
2021CPT.14.02.203811		4
STATE PROJECT	F.A. PROJECT NO.	DESCRIPTION
2021CPT.14.02.20871		DN00717

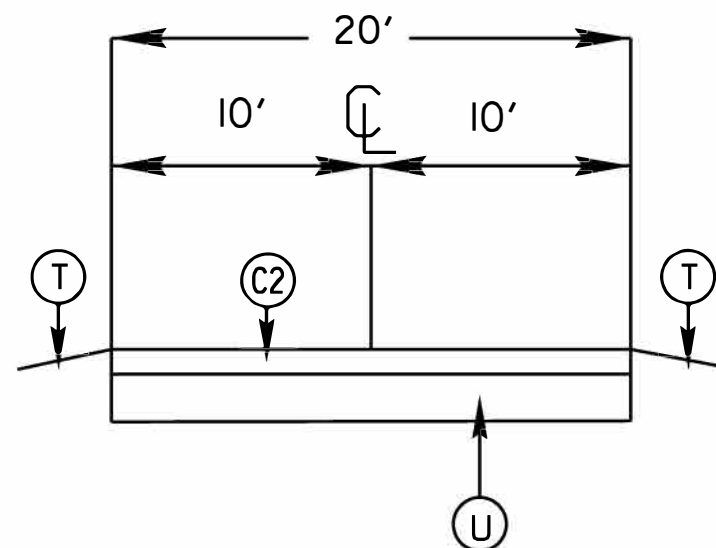
TYPICAL 1



TYPICAL 2



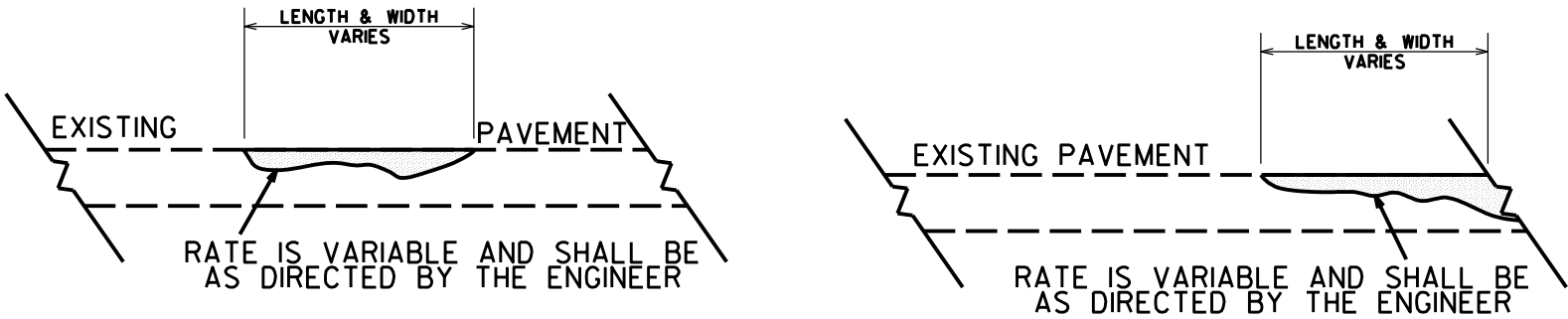
TYPICAL 3



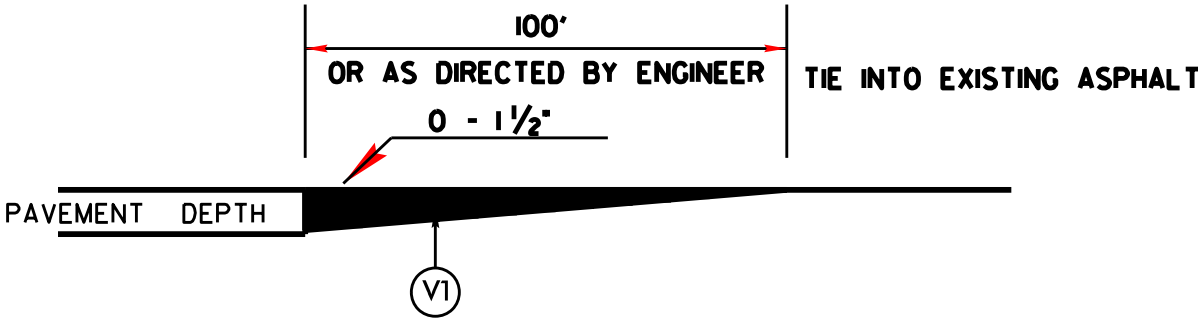
## SURFACING SCHEDULE

ITEM NO	DESCRIPTION
C1	PROP. APPROX. 1" ASPHALT CONCRETE SURFACE COURSE, (LEVELING) TYPE S9.5B, AT A AVERAGE RATE OF 110 LBS PER SQ. YD.
C2	PROP. APPROX. 1 1/4" ASPHALT CONCRETE SURFACE COURSE, TYPE S9.5B, AT A AVERAGE RATE OF 137.5 LBS. PER SQ. YD
D1	PROP. APPROX. VER DEPTH ASPHALT CONCRETE INTERMEDIATE (WEDGE) COURSE, TYPE I19.OC, AT A AVERAGE RATE OF 114 LBS PER SQ. YD. PER 1" OF DEPTH
D2	PROP. APPROX. 2 1/2 ASPHALT CONCRETE INTERMEDIATE COURSE, TYPE I19.OC, AT A AVERAGE RATE OF 285 LBS PER SQ. YD
T	SHOULDER RECONSTRUCTION WITH ABCM- SEE PROJECT SPECIAL PROVISIONS
U	EXISTING ASPHALT
V1	MILLED ASPHALT PAVEMENT 3 3/4 IN DEPTH IN DISTRESSED AREAS AS DIRECTED BY PROJECT ENGINEER SEE PROJECT SPECIAL PROVISIONS

PROJECT REFERENCE NO.		SHEET NO.
2021CPT.14.02.20381		5
STATE PROJECT	F.A. PROJECT NO.	DESCRIPTION
2021CPT.14.02.20871		DN00717



**DETAIL SHOWING METHOD OF WEDGING**



**DETAIL TO TIE INTO EXIST PAVEMENT**

**THE CONTRACTOR'S ATTENTION IS DIRECTED TO THE FACT THAT HE WILL BE REQUIRED TO MILL THE EXISTING ASPHALT PAVEMENT TO ENSURE A PROPER TIE-IN WITH THE EXISTING SURFACE AT THE BEGINNING, END AND Y LINES OF EACH MAP.  
THIS WILL BE PAID FOR AS 0-1 1/2" MILLING.**

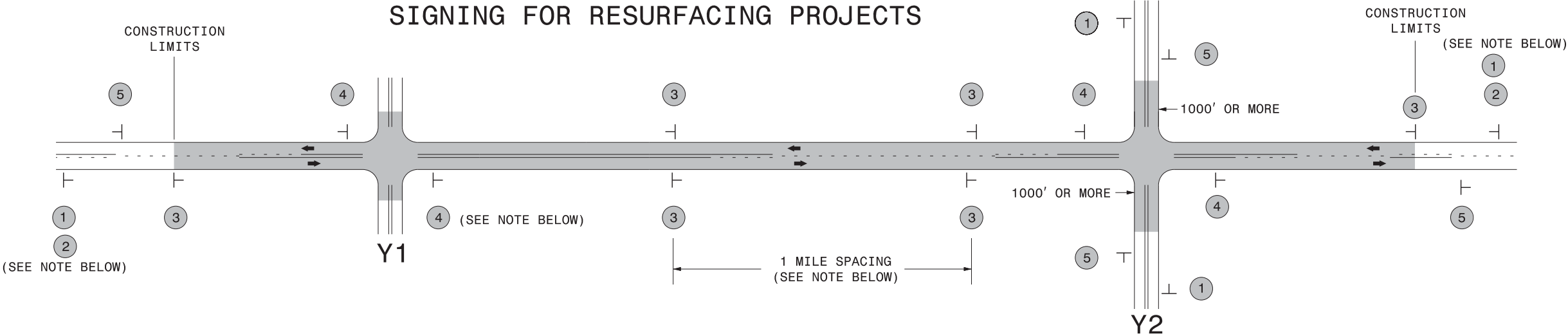
PROJECT NO.	SHEET NO.	TOTAL NO.
2021CPT.14.02.20381	3	
2021CPT.14.02.20871		

SUMMARY OF QUANTITIES

PROJECT NO	COUNTY	MAP NO	ROUTE	DESCRIPTION	TYP NO	LANES	LANE TYPE	FINAL SURFACE TESTING REQUIRED	WARM MIX ASPHALT REQUIRED	LENGTH	WIDTH	1245000000-E SHOULDER RECONSTRUCTION	1297000000-E 3 3/4" MILLING	1330000000-E INCIDENTAL MILLING	1503000000-E INTERMEDIATE COURSE, TYPE WEDGING I19.0C		1519000000-E INTERMEDIATE COURSE, I19.0C	SURFACE COURSE, S9.5B	1520000000-E LEVELING COURSE, S9.5B	1575000000-E ASPHALT BINDER FOR PLANT MIX	1704000000-E PATCHING EXISTING PAVEMENT	2800000000-N ADJ. OF CATCH BASIN	
										MI	FT	SMI	SY	SY	TONS	TONS	TONS	TONS	TONS	TONS	EA		
										6.25	18				200				3,939	273			
2021CPT.14.02.20381	Graham	1	SR-1242 (YELLOW CREEK)(UPPER TUSKEEGEE)	FROM MP 5.2 TO NC 28	1	2	2WU	NO	NO	6.25	18				200				3,939	273			
TOTAL FOR MAP NO. 1										6.25					200				3,939	273			
TOTAL FOR PROJ NO. 2021CPT.14.02.20381										6.25					200				3,939	273			
														200									
2021CPT.14..02.20871	Swain	2	SR-1364 (FONTANA ROAD)	FROM SR-1333 TO SR- 1366	2	2	2WU	NO	NO	0.51	24		7,181			1,094	535		88		4		
TOTAL FOR MAP NO. 2										0.51			7,181			1,094	535		88		4		
2021CPT.14..02.20871	Swain	3	SR-1364 (FONTANA ROAD)	FROM SR-1366 TO SR-1365	3	2	2WU	NO	NO	1.2	20	2.40		600			1,051	185	83	200			
TOTAL FOR MAP NO. 3										1.2		2.40		600			1,051	185	83	200			
2021CPT.14..02.20871	Swain	4	SR-1364 (FONTANA ROAD)	FROM SR-1365 TO GSMP LINE	1	2	2WU	NO	NO	1.1	20			600	165			770	59	130			
TOTAL FOR MAP NO. 4										1.1				600	165			770	59	130			
TOTAL FOR PROJ NO. 2021CPT.14..02.20871										2.81		2.40	7,181	1,200	165	1,094	1,586	955	230	330	4		
															1,259								
GRAND TOTAL										9.06		2.40	7,181	1,200	365		1,094	1,586	4,894	503	330	4	
															1,459								

THERMOPLASTIC AND PAINT QUANTITIES

										4413000000-E	4457000000-N	4810000000-E		4835000000-E	4840000000-N
PROJECT NO	COUNTY	MAP NO	ROUTE	DESCRIPTION	TYP NO	LANES	LANE TYPE	LENGTH	WIDTH	WORK ZONE ADVANCE GENERAL WARNING SIGNING	TEMPORARY TRAFFIC CONTROL	4" WHITE PAINT	4" YELLOW PAINT	24" WHITE PAINT	PAINT MSG SCHOOL
								MI	FT			SF	LS	LF	
2021CPT.14.02.20381	Graham	1	SR-1242 (YELLOW CREEK)(UPPER TUSKEEGEE)	FROM MP 5.2 TO NC 28	1	2	2WU	6.25	18	694	1.00	134,500	134,500	100	
TOTAL FOR MAP NO. 1								6.25		694	1	134,500	134,500	100	
TOTAL FOR PROJ NO. 2021CPT.14.02.20381								6.25		694	1	134,500	134,500	100	
													269,000		
2021CPT.14..02.20871	Swain	2	SR-1364 (FONTANA ROAD)	FROM SR-1333 TO SR- 1366	2	2	2WU	0.51	24	57		10,975	10,975	160	
TOTAL FOR MAP NO. 2								0.51		57		10,975	10,975	160	
2021CPT.14..02.20871	Swain	3	SR-1364 (FONTANA ROAD)	FROM SR-1366 TO SR-1365	3	2	2WU	1.2	20	314		25,824	25,824	400	12
TOTAL FOR MAP NO. 3								1.2		314		25,824	25,824	400	12
2021CPT.14..02.20871	Swain	4	SR-1364 (FONTANA ROAD)	FROM SR-1365 TO GSMP LINE	1	2	2WU	1.1	20	134		23,672	23,672		
TOTAL FOR MAP NO. 4								1.1		134		23,672	23,672		
TOTAL FOR PROJ NO. 2021CPT.14..02.20871								2.81		505		60,471	60,471	560	12
												120,942			
GRAND TOTAL								9.06		1,199	1	194,971	194,971	660	12
												389,942			



**LEGEND**

— STATIONARY SIGN

→ DIRECTION OF TRAFFIC FLOW

**MAINLINE (-L-) SIGNING**

**-Y- LINE SIGNING**

SIGNING NOTES AND PLACEMENT PER DIRECTION	<div>1</div> <div>2</div> <div></div> <div>PLACE 1000' PRIOR TO BEGINNING OF CONSTRUCTION LIMITS. ONLY USED ON -Y- LINES IF RESURFACING LIMITS EXTEND 1000' ALONG -Y- LINE.</div> <div>#2 SIGN ONLY USED WHEN RESURFACING LIMITS ARE 2 OR MORE MILES IN LENGTH. ROUND UP TO NEXT WHOLE NUMBER. (NO FRACTIONAL OR DECIMAL NUMBERS)</div>	<p>NO REQUIRED STATIONARY SIGNING FOR THE FOLLOWING -Y- LINE CONDITIONS:</p> <ol style="list-style-type: none"><li>1) LESS THAN 1000' OF RESURFACING ALONG -Y- LINE</li><li>2) SUBDIVISION ROADS</li><li>3) DEAD END ROADS</li></ol> <p>WHEN PAVING/CONSTRUCTION ACTIVITIES PROCEED ACROSS AN UNSIGNED -Y- LINE, ADVANCE WARNING PORTABLE SIGNS SHALL BE USED ALONG THE -Y- LINE AS SHOWN BELOW. REMOVE UPON COMPLETION OF WORK.</p> <div></div> <p>PLACED 500' IN ADVANCE OF FLAGGER. PLACED 250' IN ADVANCE OF FLAGGER.</p>
	<div>3</div> <div></div> <div>PLACE INITIALLY AT THE CONSTRUCTION LIMITS AND SPACED 1 MILE APART THEREAFTER. IF NO -Y- LINES EXIST, PLACE 2ND SET 1/2 MILE FROM THE CONSTRUCTION LIMITS AND THEN SPACE 1 MILE THEREAFTER.</div>	
	<div>4</div> <div></div> <div>THESE ARE FOR -Y- LINES THAT ARE "THROUGH" ROADWAYS. DEAD END AND SUBDIVISION ROADS ARE NOT "THROUGH" ROADWAYS. INSTALL 500' +/- FROM EACH -Y- LINE APPROACH AS SHOWN ABOVE. FOR MULTIPLE -Y- LINES THAT ARE SEPARATED BY 0.25 MILES OR LESS, TREAT AS A SINGLE UNIT AND INSTALL WITHIN 500' OF EACH APPROACH. A MAXIMUM OF 2 SIGN SETS PER MILE. DO NOT INSTALL WHEN -Y- LINES ARE WITHIN 0.5 MILES FROM "END ROAD WORK" SIGN.</div>	
	<div>5</div> <div></div> <div>PLACE 500' FOLLOWING THE END OF CONSTRUCTION LIMITS.</div>	