

NC92 PLANTING

100 LN. Lagerstroemia Natchaz
Single Stem

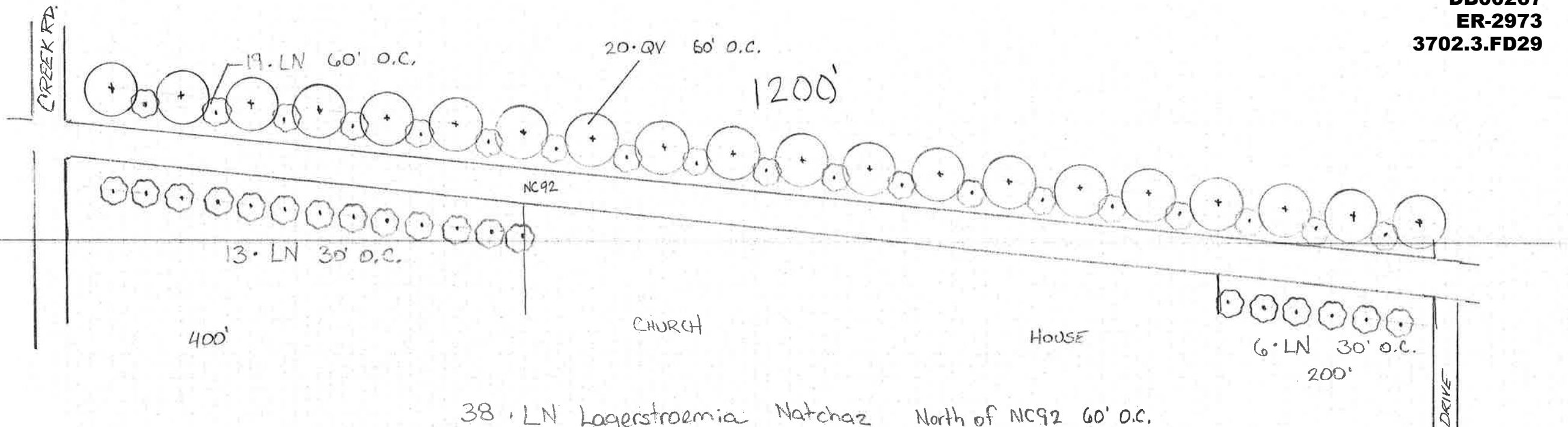
46 QV. Quercus Live Oak

40 IN. Ilex Nellie Stevens
Limb up 18" from ground

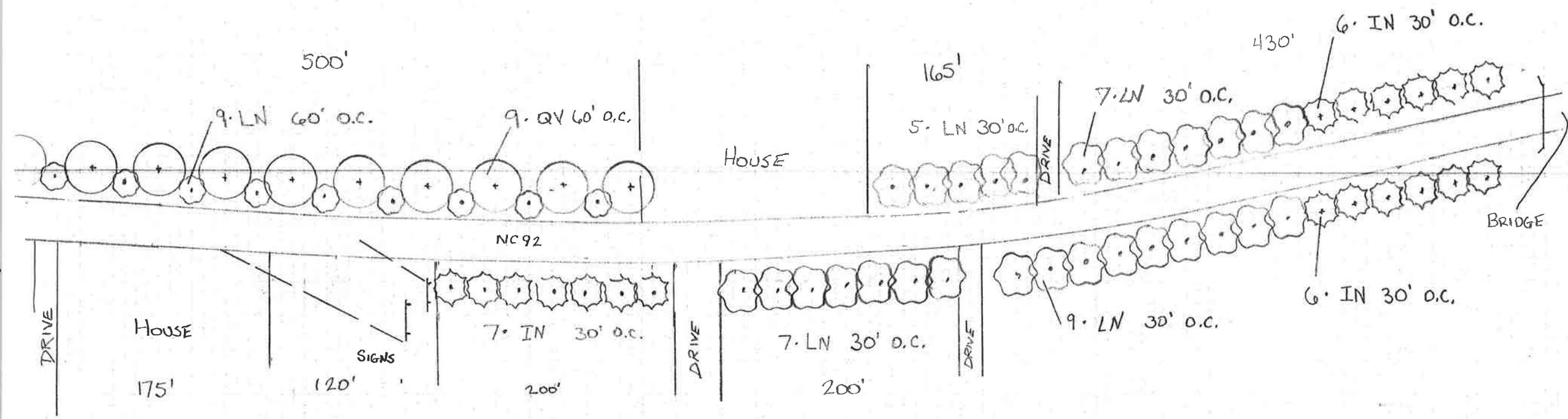
Mulch

Water

15,000 sq. ft. Vegetation removal



- 38 LN Lagerstroemia Natchaz
Single stem
 - 20 QV Quercus Live Oak
- North of NC92 60' O.C.
South of NC92 30' O.C.
- 60' o.c.



- 37 LN Lagerstroemia Nakhar Single Stem
- 9 QV Quercus Live Oak 60' o.c.
- 19 IN Ilex Nellie Stevens 30' o.c.
- Limb up 18" above ground

Bath Creek

100'

4 LN 30' O.C.

Bridge



4 LN 30' O.C.

SIGN

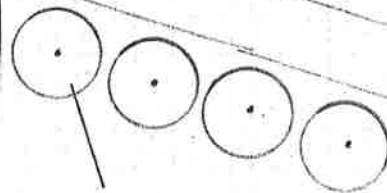
NC 92

BATH HISTORIC SITE

8 LN Lagerstroemia Natchez 30' O.C.
Single stem

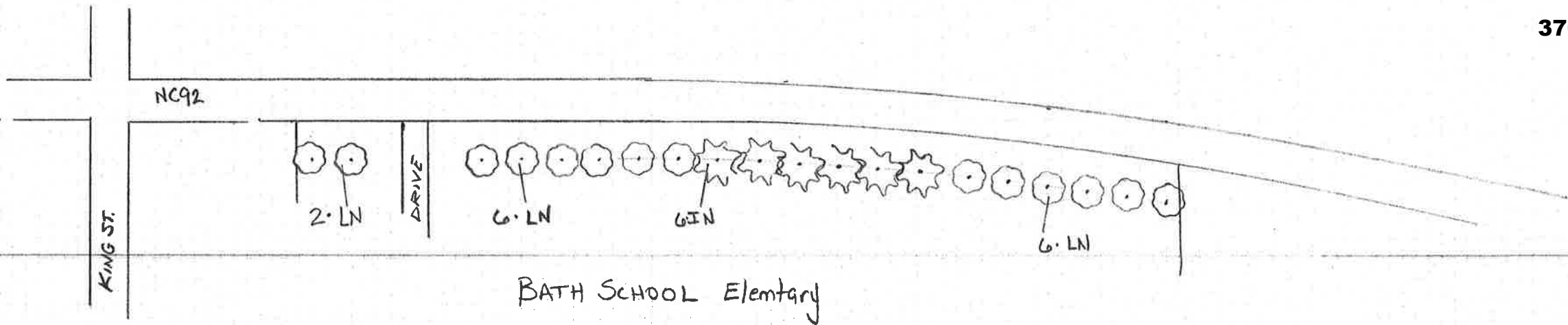
4 QV Quercus Live Oak 50' O.C.

N. MAIN ST.



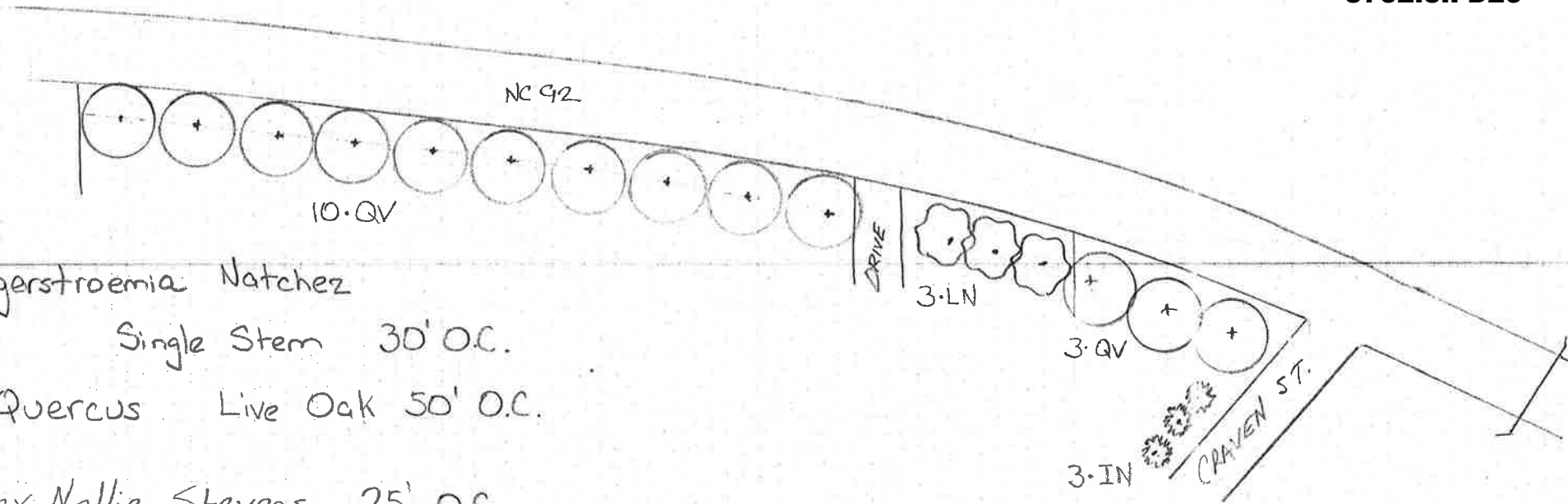
4 QV 50' O.C.

DRIVE

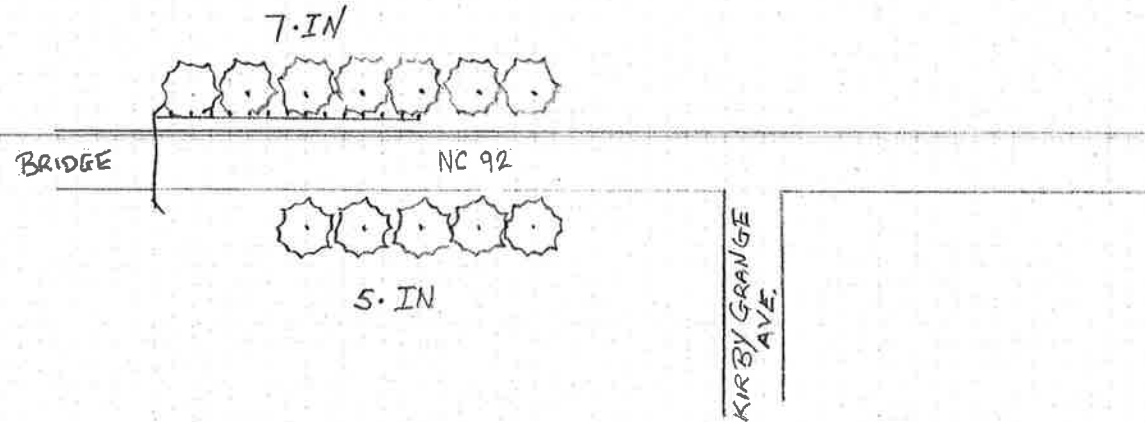


BATH SCHOOL Elementary

- 14 LN Lagerstroemia Natchaz 30' o.c. Single Stem
- 6 IN Ilex Nellie Stevens 30' o.c.
Limb up 18" above ground



- 3-LN Lagerstroemia Natchez
Single Stem 30' O.C.
- 13-QV Quercus Live Oak 50' O.C.
- 3-IN Ilex Nellie Stevens 25' O.C.
Limb up 18" above ground



12-IN ILEX NELLIE STEVENS 30' O.C.
Limb up 18" from ground