

PAMLICO COUNTY

DB00518

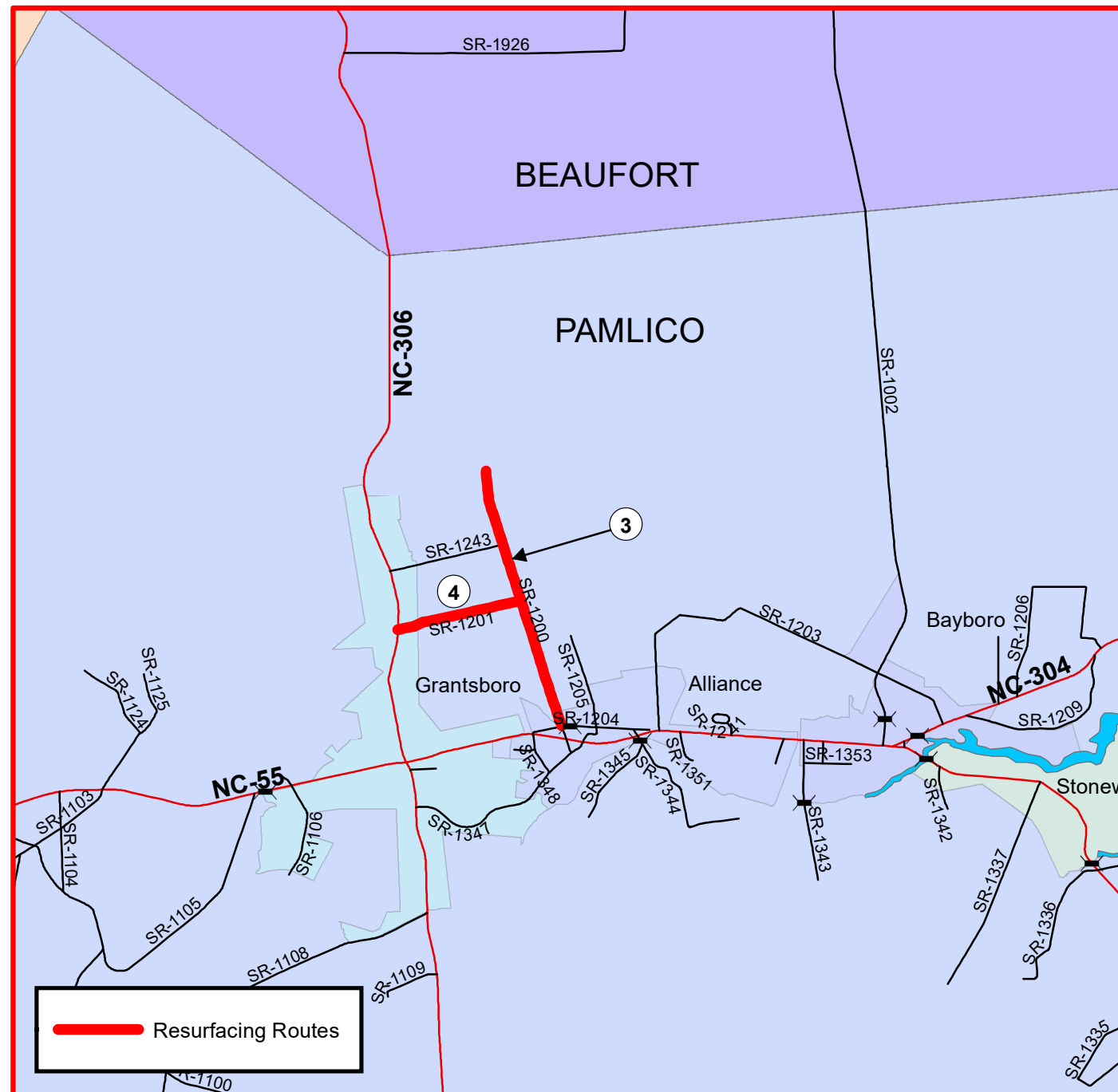
WBS# 2022CPT.02.18.20691

PROJECT REFERENCE NO.	SHEET NO.
DB00518	1



NCDOT
DIVISION 2

TYPE OF WORK: RESURFACING, SHOULDER RECONSTRUCTION



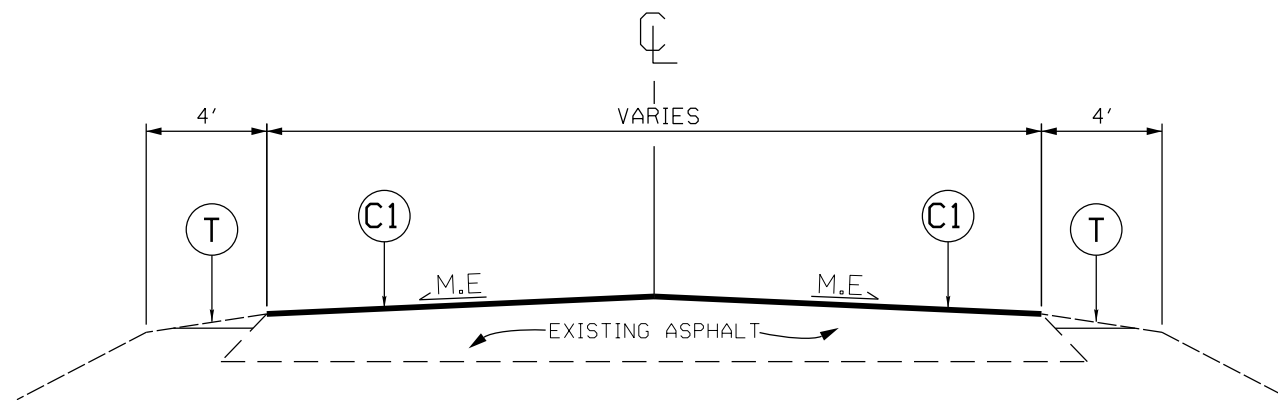
Resurfacing Routes

PAVEMENT SCHEDULE	
C1	PROP. APPROX. 1 1/2" ASPHALT CONCRETE SURFACE COURSE, TYPE S9.5B AT AN AVERAGE RATE OF 168 LBS. PER SQ. YD.
V1	INCIDENTAL MILLING
T	SHOULDER RECONSTRUCTION
DRAWINGS NOT TO SCALE	

NOTE: PAVEMENT EDGE SLOPES ARE 1:1 UNLESS SHOWN OTHERWISE.

TYPICAL SECTION NO. 1

MAP 1,2,3,4



NOTE:

1. PERFORM 4" DEPTH MILL PATCHING AT LOCATIONS AND WIDTHS AS SHOWN ON SHEET 3. PLACE ASPHALT BASE COURSE B25.0C IN ONE LIFT TO BACKFILL.
2. PLACE ASPHALT SURFACE COURSE AT FULL WIDTH OF EXISTING ASPHALT PAVEMENT.
3. INCLUDES INCIDENTAL MILLING AT THE ENDS OF MAIN LINE AND Y-LINE SECTIONS, AS DIRECTED BY THE ENGINEER.
4. PERFORM SHOULD RECONSTRUCTION AFTER PAVING IS COMPLETED.

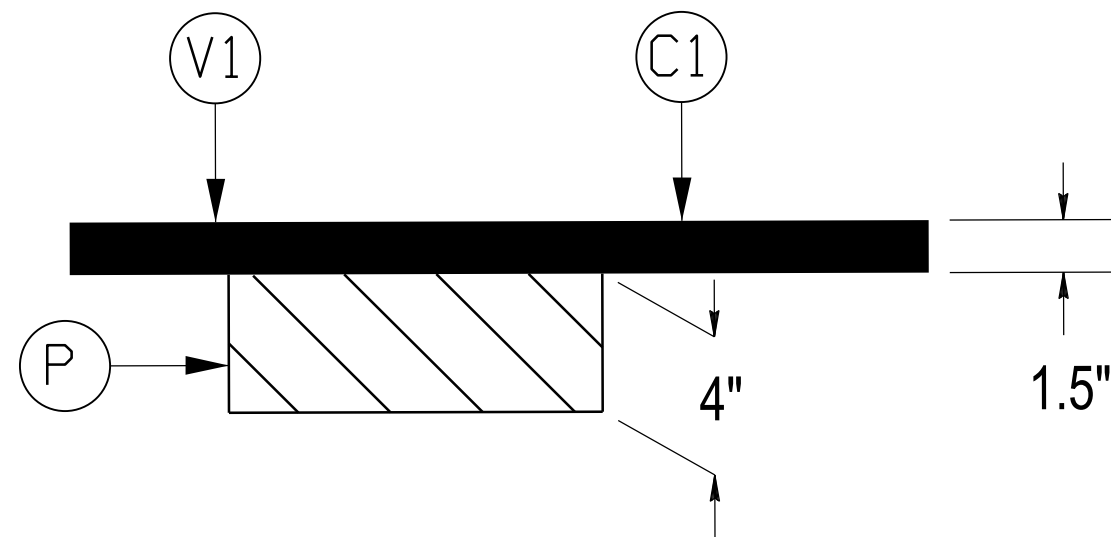
PROJECT NO.	SHEET NO.	TOTAL NO.
DB00518	3	

SUMMARY OF QUANTITIES

PROJECT NO	COUNTY	MAP NO	ROUTE	DESCRIPTION	TYP NO	LANES	LANE TYPE	FINAL SURFACE TESTING REQUIRED	WARM MIX ASPHALT REQUIRED	LENGTH	WIDTH	0262000000-N	1220000000-E	1245000000-E	1330000000-E	1519000000-E	1575000000-E	1880000000-E	6000000000-E	071010000-	6084000000-E	6117000000-N	4413000000-E	4457000000-N		
												HAULING NCDOT SUPPLIED SHOULDER MATERIAL	INCIDENTAL STONE BASE	SHOULDER RECONSTRUCTION	INCIDENTAL MILLING	SURFACE COURSE, S9.5B	ASPHALT BINDER FOR PLANT MIX	4" DEPTH MILL PATCHING EXISTING PAVEMENT - B 25.0 C	TEMPORARY SILT FENCE	WATTLE	SEED & MULCHING	RESPONSE FOR EROSION CONTROL	WORK ZONE ADVANCE/GENERAL WARNING SIGNING	TEMPORARY TRAFFIC CONTROL		
												MI	FT	EA	TONS	SMI	SY	TONS	TONS	TON	LF	LF	AC	EA	SF	LS
2022CPT.02.18.20691	Pamlico	1	SR 1134 BEARDS CREEK DR	FROM SR 1140 TO END STATE MAINT.	1	2	2WU	NO	NO	0.37	20	15	19	0.74	500	500	34		59	40	0.37		45	0.12		
TOTAL FOR MAP NO. 1										0.37		15	19	0.74	500	500	34		59	40	0.37		45	0.12		
2022CPT.02.18.20691	Pamlico	2	SR 1140 FISHER TURNPIKE RD	FROM END STATE MAINT. TO SR 1117	1	2	2WU	NO	NO	0.51	20	20	26	1.02	500	600	44	350	82	40	0.51		60	0.12		
TOTAL FOR MAP NO. 2										0.51		20	26	1.02	500	600	44	350	82	40	0.51		60	0.12		
2022CPT.02.18.20691	Pamlico	3	SR 1200 NEW DITCH FARM RD	FROM SR 1204 TO DEAD END	1	2	2WU	NO	NO	2.68	20	107	134	5.36	1,300	2,800	221		429	100	2.68	1	300	0.52		
TOTAL FOR MAP NO. 3										2.68		107	134	5.36	1,300	2,800	221		429	100	2.68	1	300	0.52		
2022CPT.02.18.20691	Pamlico	4	SR 1201 HUNNINGS FARM RD	NC 306 TO SR 1200	1	2	2WU	NO	NO	1.08	21	43	54	2.16	300	1,200	101		173	100	1.08		120	0.24		
TOTAL FOR MAP NO. 4										1.08		43	54	2.16	300	1,200	101		173	100	1.08		120	0.24		
TOTAL FOR PROJ NO. 2022CPT.02.18.20691										4.64		185	233	9.28	2,600	5,100	400	350	743	280	4.64	1	525	1.00		
GRAND TOTAL										4.64		185	233	9.28	2,600	5,100	400	350	743	280	4.64	1	525	1.00		

4" MILL PATCH	STA.	STA.	WIDTH	MAP
	9+49	9+91	7' RT	2
	9+49	11+73	7' LT	2
	11+73	12+88	20' LT/RT	2
	14+90	15+95	10' RT	2
	16+44	18+43	10' RT	2
	18+43	18+88	7' RT	2
	19+40	20+91	7' RT	2
	23+14	23+46	7' RT	2
	24+46	24+95	7' RT	2
	24+95	26+18	20' LT/RT	2

4" DEPTH MILL PATCHING DETAIL MAP 2

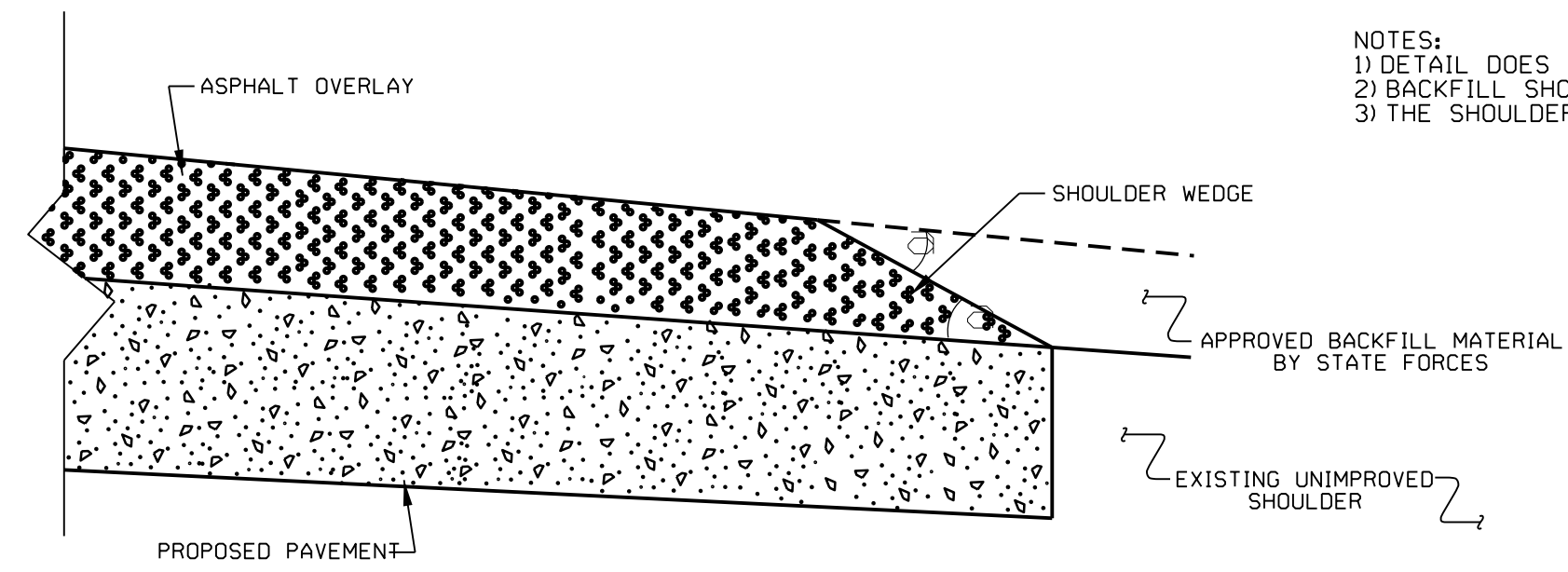


PAVEMENT SCHEDULE	
C1	PROP. APPROX. 1.5" OF ASPHALT CONCRETE SURFACE COURSE, TYPE S9.5B, AT AVERAGE RATE OF 168.0 LBS. PER SQ. YD.
V1	INCIDENTAL MILLING
P	4" DEPTH MILL PATCHING W/ B 25.0C
DRAWINGS NOT TO SCALE	

NOTE:

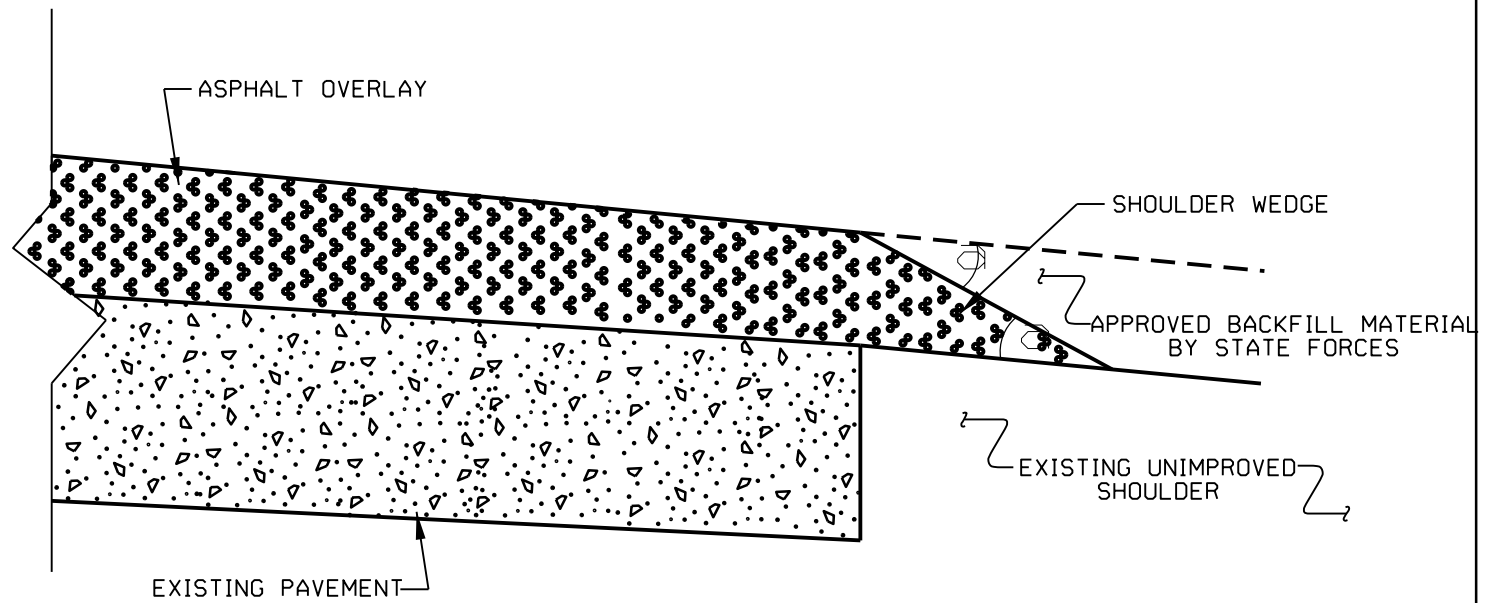
1. THE CONTRACTOR SHALL PERFORM ANY UNIFORM OR INCIDENTAL MILLING AT TIE-INS BEFORE PERFORMING THE 4" DEPTH MILL PATCHING.
2. THE CONTRACTOR SHALL PERFORM THE MILL PATCHING REMOVAL AND REPLACEMENT IN THE SAME DAY.
3. 4" DEPTH MILL PATCHING SHALL BE PERFORMED AT LOCATIONS AS SHOWN ON SHEET 3, AND AS DIRECTED BY THE ENGINEER.

NOTES:
 1) DETAIL DOES NOT APPLY TO OGAFB AND ULTRA-THIN BONDED WEARING COURSE.
 2) BACKFILL SHOULDER WITH APPROVED MATERIAL.
 3) THE SHOULDER WEDGE DEVICE MAY BE DISENGAGED AT PAVED DRIVEWAYS AND SIDE STREETS.



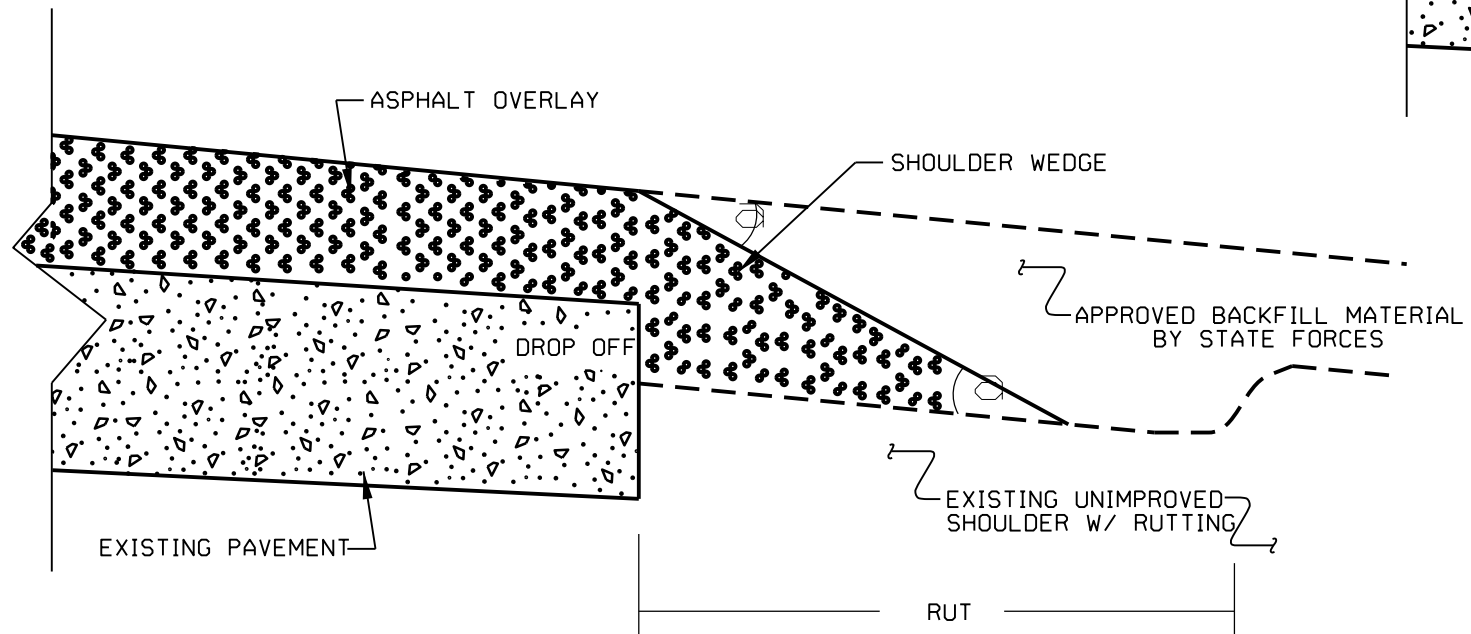
SHOULDER WEDGE DETAIL

(Resurfacing Projects w/ Widening or with Existing Paved Shoulder having no dropoffs)



SHOULDER WEDGE DETAIL

(Resurfacing Projects w/ NO Widening)



SHOULDER WEDGE DETAIL

(Resurfacing Adjacent to Rutted Shoulder)

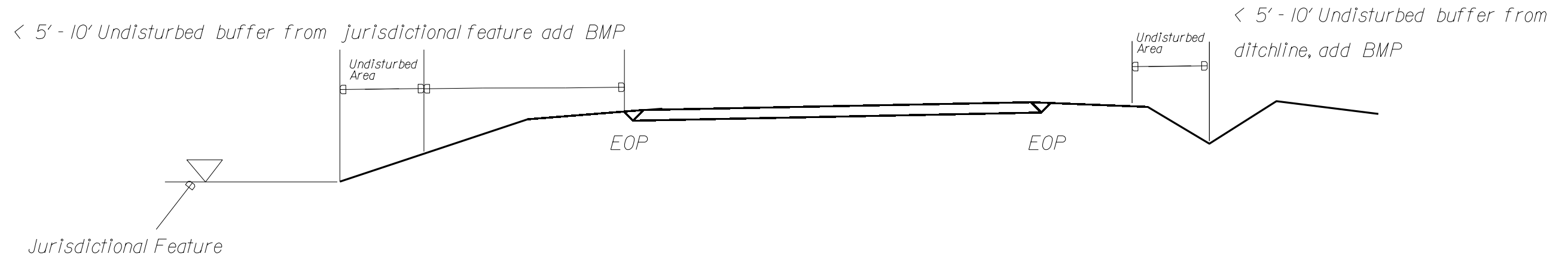
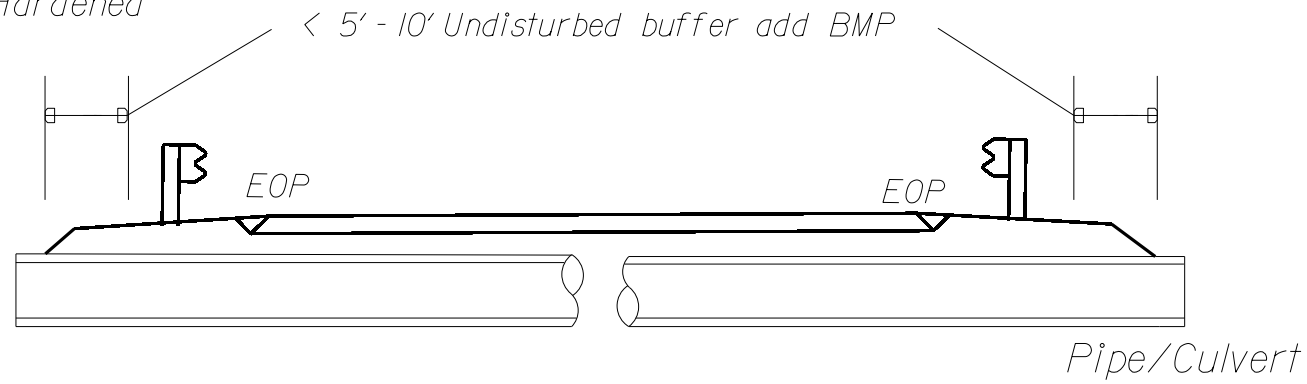
- SHOULDER WEDGE ANGLE = 30°

CONTRACT STANDARDS AND DEVELOPMENT UNIT	
Office 919-707-6950	FAX 919-250-4119
SHOULDER WEDGE DETAILS	
ORIGINAL BY: T.SPELL	DATE: 7-19-11
MODIFIED BY:	DATE: 10/16/12
CHECKED BY:	DATE:
FILE SPEC: sawr/details/stand/shoulderwedgestd.dgn	

NOTES: Less than 5' - 10' undisturbed buffer from ROW, ditchline, water feature, or drainage inlet, add BMP.

BMP Options: Wattle, Silt Fence or Hardened Aggregate.

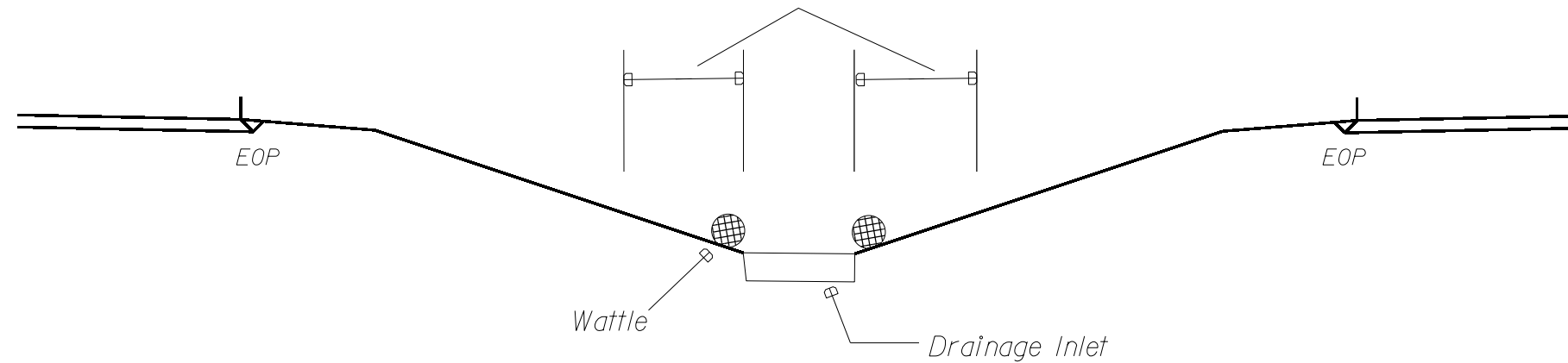
EROSION CONTROL DETAIL



Use BMP's if shoulders and/or frontslopes and/or ditchline and/or backslopes are disturbed

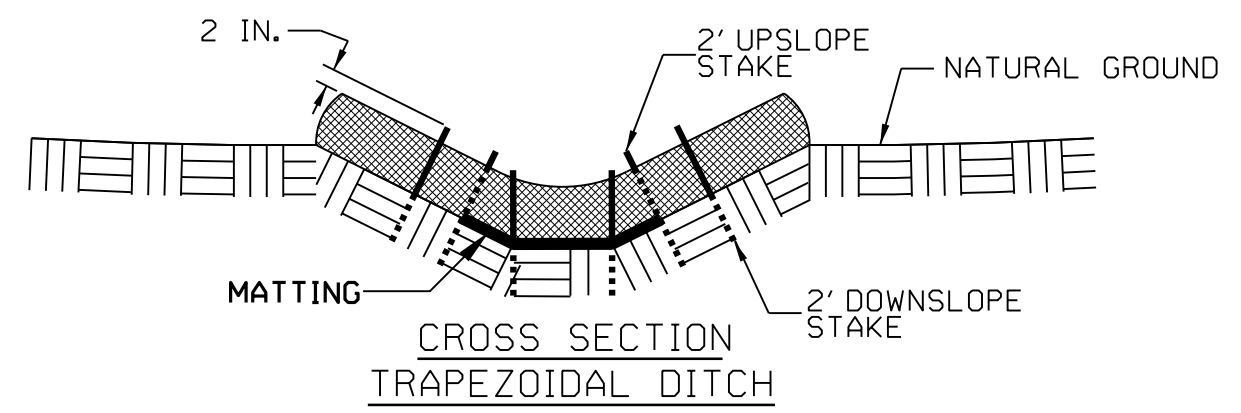
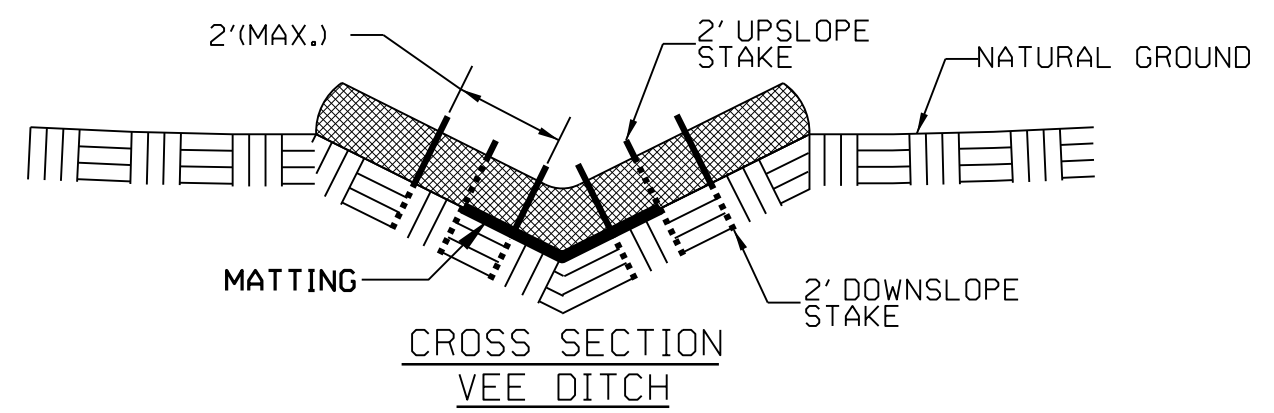
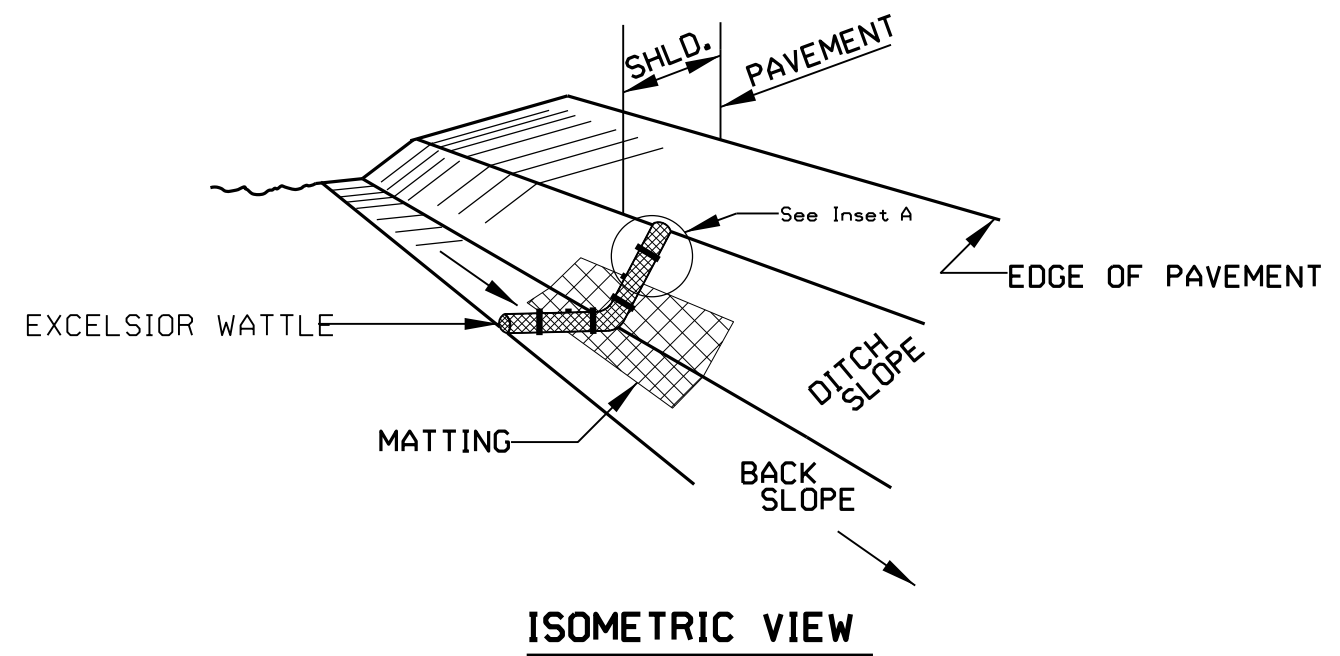


< 5' - 10' Undisturbed buffer from inlet, add wattle



NOT TO SCALE

WATTLE DETAIL



NOTES:

USE MINIMUM 12 IN. DIAMETER EXCELSIOR WATTLE.

USE 2 FT. WOODEN STAKES WITH A 2 IN. BY 2 IN. NOMINAL CROSS SECTION.

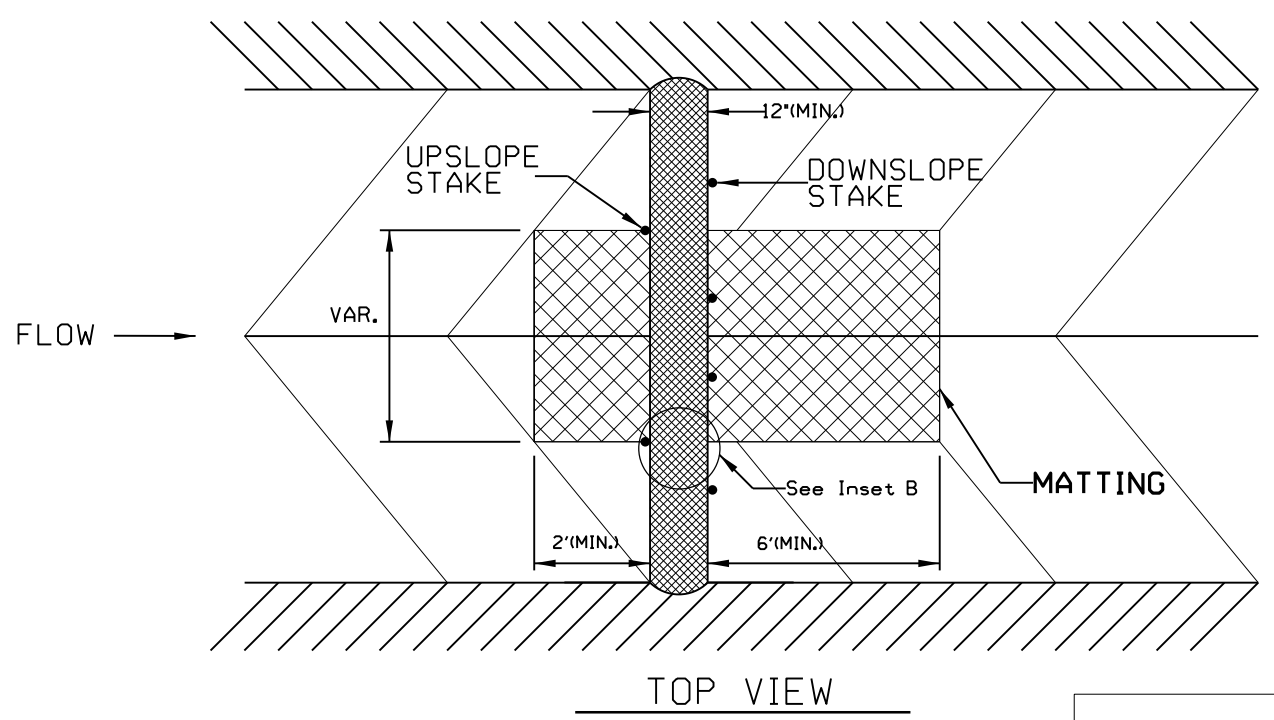
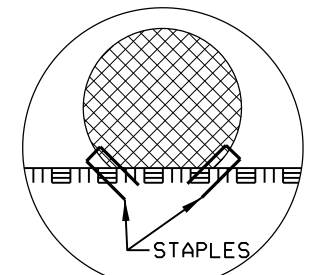
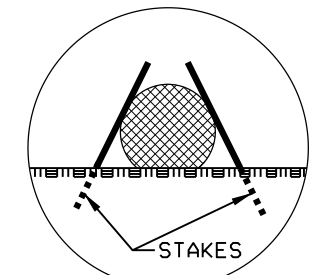
ONLY INSTALL WATTLE(S) TO A HEIGHT IN DITCH SO FLOW WILL NOT WASH AROUND WATTLE AND SCOUR DITCH SLOPES AND AS DIRECTED.

INSTALL A MINIMUM OF 2 UPSLOPE STAKES AND 4 DOWNSLOPE STAKES AT AN ANGLE TO WEDGE WATTLE TO BOTTOM OF DITCH.

PROVIDE STAPLES MADE OF 0.125 IN. DIAMETER STEEL WIRE FORMED INTO A U SHAPE NOT LESS THAN 12" IN LENGTH.

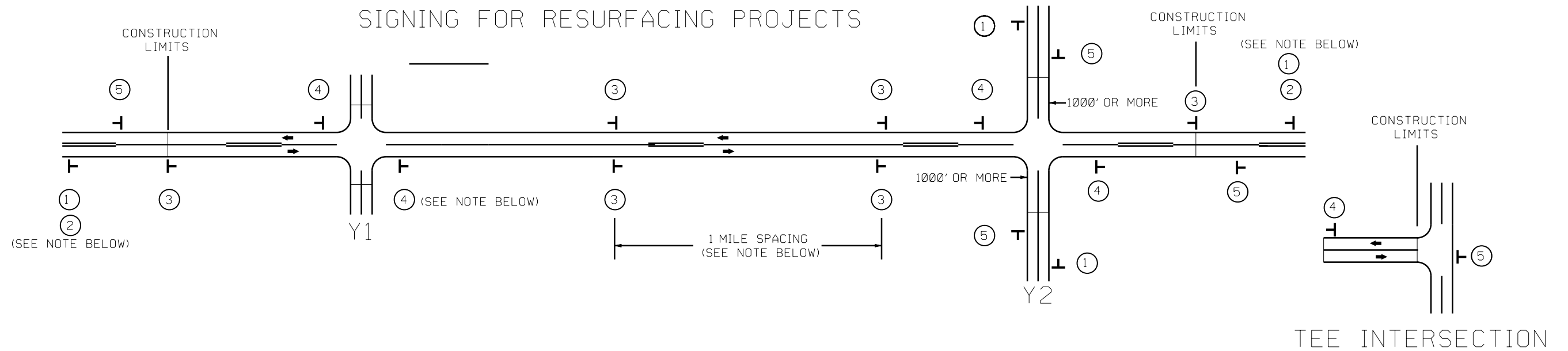
INSTALL STAPLES APPROXIMATELY EVERY 1 LINEAR FOOT ON BOTH SIDES OF WATTLE AND AT EACH END TO SECURE IT TO THE SOIL.

INSTALL MATTING IN ACCORDANCE WITH SECTION 1631 OF THE STANDARD SPECIFICATIONS.



NOT TO SCALE

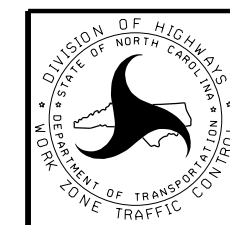
SIGNING FOR RESURFACING PROJECTS



MAINLINE (-L-) SIGNING

-Y- LINE SIGNING

SIGNING NOTES AND PLACEMENT PER DIRECTION	<p>① </p> <p>② </p> <p>PLACE 1000' PRIOR TO BEGINNING OF CONSTRUCTION LIMITS. ONLY USED ON -Y- LINES IF RESURFACING LIMITS EXTEND 1000' ALONG -Y- LINE.</p> <p>*2 SIGN ONLY USED WHEN RESURFACING LIMITS ARE 2 OR MORE MILES IN LENGTH. ROUND UP TO NEXT WHOLE NUMBER.(NO FRACTIONAL OR DECIMAL NUMBERS)</p>	<p>NO REQUIRED STATIONARY SIGNING FOR THE FOLLOWING -Y- LINE CONDITIONS:</p> <ol style="list-style-type: none"> 1) LESS THAN 1000' OF RESURFACING ALONG -Y- LINE 2) SUBDIVISION ROADS 3) DEAD END ROADS <p>WHEN PAVING/CONSTRUCTION ACTIVITIES PROCEED ACROSS AN UNSIGNED -Y- LINE, ADVANCE WARNING PORTABLE SIGNS SHALL BE USED ALONG THE -Y- LINE AS SHOWN BELOW. REMOVE UPON COMPLETION OF WORK.</p> <p></p> <p></p> <p>PLACED 500' IN ADVANCE OF FLAGGER. PLACED 250' IN ADVANCE OF FLAGGER.</p>
	<p>③ </p> <p>- PLACE INITIALLY AT THE CONSTRUCTION LIMITS AND SPACE 1 MILE APART THEREAFTER. - AT TEE INTERSECTIONS INSTALL INITIALLY 1/2 MILE FROM INTERSECTION AND SPACE 1 MILE APART THEREAFTER.</p>	
	<p>④ </p> <p>- THESE ARE FOR -Y- LINES THAT ARE "THROUGH" ROADWAYS. - DEAD END AND SUBDIVISION ROADS ARE NOT "THROUGH" ROADWAYS. - INSTALL 500' +/- FROM EACH -Y- LINE APPROACH AS SHOWN ABOVE. - FOR MULTIPLE -Y- LINES THAT ARE SEPARATED BY 0.25 MILES OR LESS, TREAT AS A SINGLE UNIT AND INSTALL WITHIN 500' OF EACH APPROACH. - A MAXIMUM OF 2 SIGN SETS PER MILE. DO NOT INSTALL WHEN -Y- LINES ARE WITHIN 0.5 MILES FROM "END ROAD WORK" SIGN. - FOR TEE INTERSECTIONS, INSTALL WITHIN 500' +/- OF THE INTERSECTION ALONG -L- LINE.</p>	
	<p>⑤ </p> <p>PLACE 500' FOLLOWING THE END OF CONSTRUCTION LIMITS OR AS SHOWN WHEN WORK ENDS AT A 3-WAY TEE INTERSECTION.</p>	



RESURFACING
 ADVANCE WARNING SIGNS
 FOR
 RURAL AND SUBURBAN
 2 LANE ROADWAYS