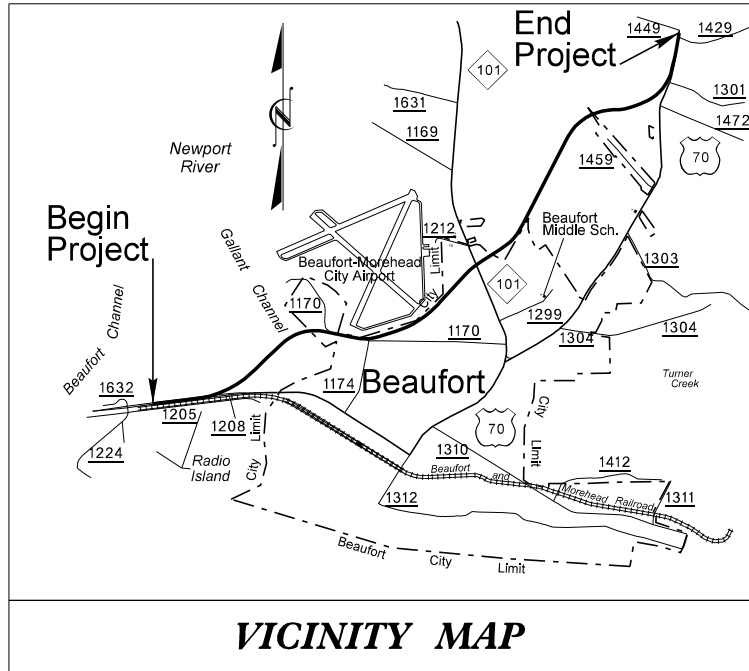


**TIP PROJECT: R-3307**

**CONTRACT: C202848**

See Sheet 1-A For Index of Sheets  
See Sheet 1-B For Conventional Symbols



**VICINITY MAP**

STATE OF NORTH CAROLINA  
DIVISION OF HIGHWAYS

PERMIT DRAWING  
SHEET 1 OF 6

STATE	STATE PROJECT REFERENCE NO.	SHEET NO.	TOTAL SHEETS
N.C.	R-3307	1	
STATE PROJ. NO.	F.A. PROJ. NO.	DESCRIPTION	
34528.1.1	STPNHF-70(43)	PE	
34528.2.2	STPNHF-70(105)	RW & UTIL.	
34528.3.FR1	STPNHF-70(132)	CONST.	

**CARTERET COUNTY**

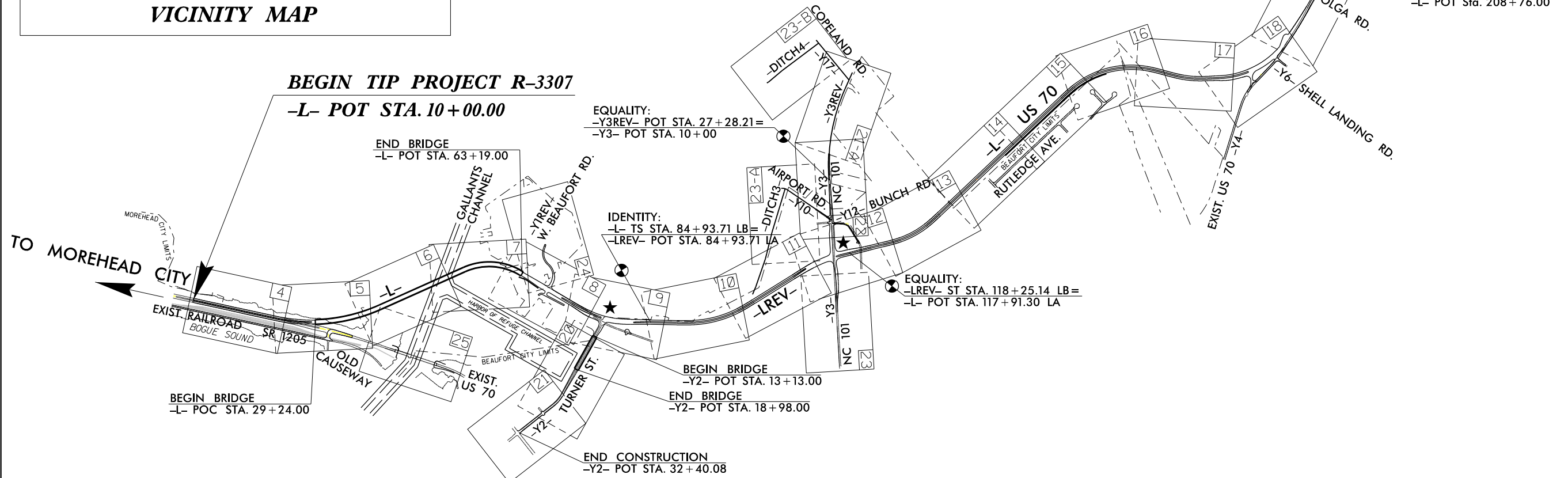
**LOCATION: US 70 FROM EXISTING FOUR LANES AT RADIO ISLAND TO US 70 NORTH OF SR 1429 (OLGA ROAD)**

**TYPE OF WORK: GRADING, PAVING, DRAINAGE, SIGNALS AND STRUCTURES**

**WETLAND AND SURFACE WATER IMPACTS PERMIT**

**END TIP PROJECT R-3307**

**-L- PT STA. 207 + 95.09**

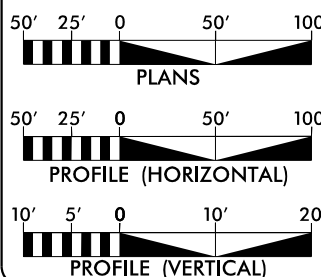


★ PROPOSED TRAFFIC SIGNAL

THIS IS A PARTIAL CONTROLLED-ACCESS PROJECT WITH ACCESS BEING LIMITED TO POINTS AS SHOWN ON THE PLANS.

\*\* DESIGN EXCEPTION REQUIRED FOR HORIZONTAL ALIGNMENT (50 MPH), VERTICAL ALIGNMENT (55 MPH), MAXIMUM GRADE (6%), HORIZONTAL STOPPING SIGHT DISTANCE (38 MPH), AND VERTICAL STOPPING SIGHT DISTANCE (50 MPH).

**GRAPHIC SCALES**



**DESIGN DATA**

ADT 2014 = 29,385  
ADT 2034 = 41,154  
K = 11 %  
D = 60 %  
T = 5 % \*  
V (SHOULDER) = 60 MPH\*\*  
V (CURB & GUTTER) = 50 MPH  
\* (TTST 1 % + DUAL 4) %  
FUNC. CLASS = ARTERIAL STATEWIDE TIER

**PROJECT LENGTH**

LENGTH ROADWAY TIP PROJECT R-3307 = 3.112 MI.  
LENGTH STRUCTURE TIP PROJECT R-3307 = 0.643 MI.  
TOTAL LENGTH OF TIP PROJECT R-3307 = 3.755 MI.

Prepared In the Office of:  
**DIVISION OF HIGHWAYS**  
1000 Birch Ridge Dr., Raleigh NC, 27610

2012 STANDARD SPECIFICATIONS

RIGHT OF WAY DATE:  
JULY 18, 2008

LETTING DATE:  
JANUARY 21, 2014

REKHA PATEL, P.E.  
PROJECT ENGINEER

MICHAEL W. LITTLE, P.E.  
PROJECT DESIGN ENGINEER

HYDRAULICS ENGINEER

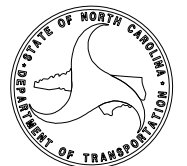
INCOMPLETE PLANS  
DO NOT USE FOR R/W ACQUISITION

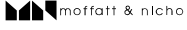
SIGNATURE: \_\_\_\_\_ P.E.

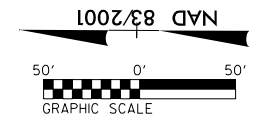
ROADWAY DESIGN ENGINEER


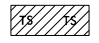
INCOMPLETE PLANS  
DO NOT USE FOR R/W ACQUISITION

SIGNATURE: \_\_\_\_\_ P.E.

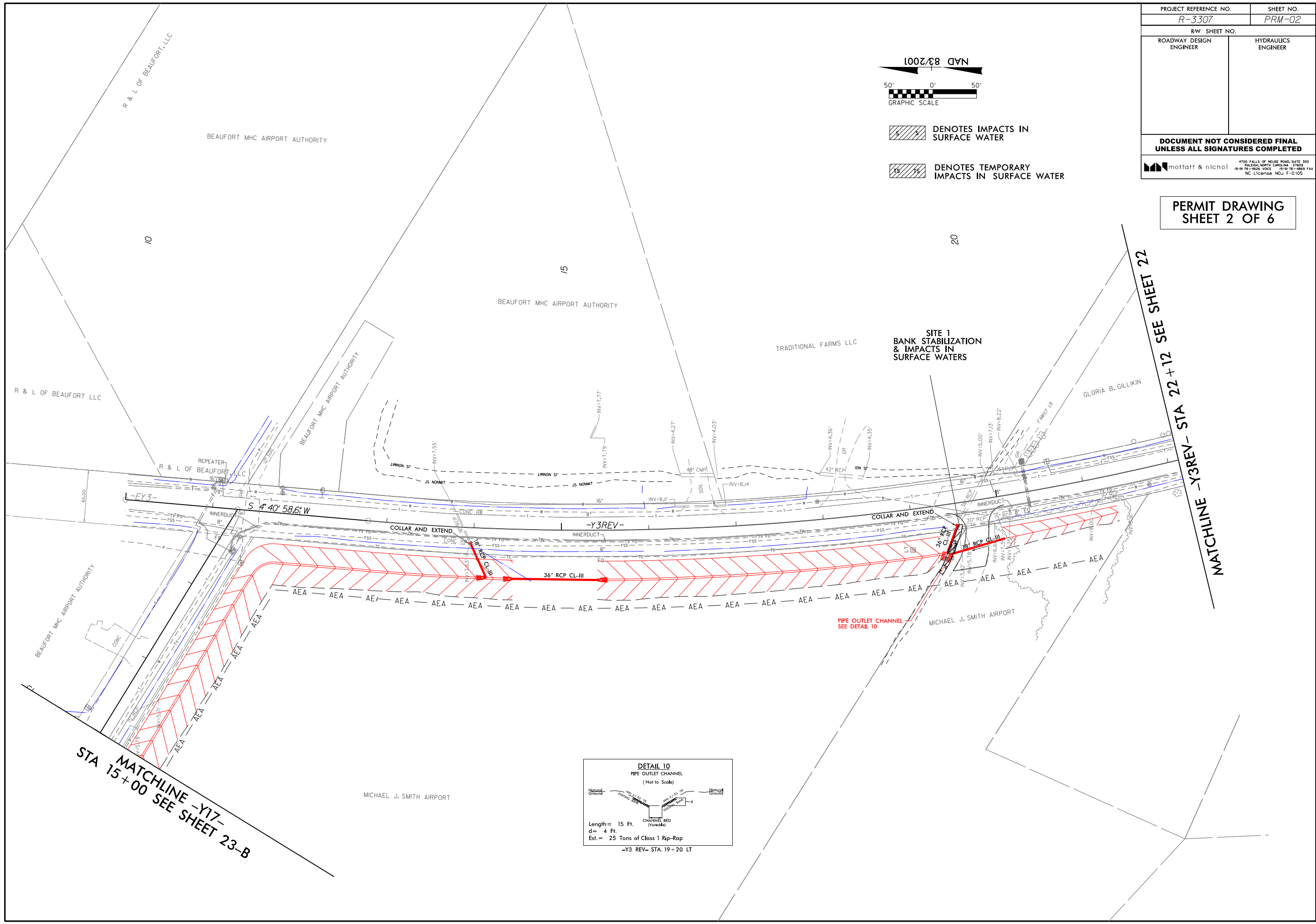


PROJECT REFERENCE NO. <i>R-3307</i>	SHEET NO. <i>PRM-02</i>
RW SHEET NO.	
ROADWAY DESIGN ENGINEER	HYDRAULICS ENGINEER
<b>DOCUMENT NOT CONSIDERED FINAL UNLESS ALL SIGNATURES COMPLETED</b>	
 <small>4700 FALLS OF NEUSE ROAD, SUITE 300 RALEIGH, NORTH CAROLINA 27609 (919) 781-4626 VOICE (919) 781-4869 FAX NC License NO.: F-0105</small>	



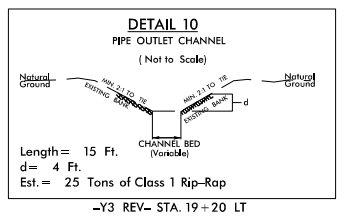
-  DENOTES IMPACTS IN SURFACE WATER
-  DENOTES TEMPORARY IMPACTS IN SURFACE WATER

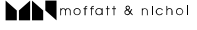
**PERMIT DRAWING  
SHEET 2 OF 6**



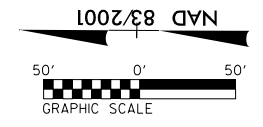
**MATCHLINE -Y17-  
STA 15+00 SEE SHEET 23-B**


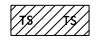
**MATCHLINE -Y3REV- STA 22+12 SEE SHEET 22**

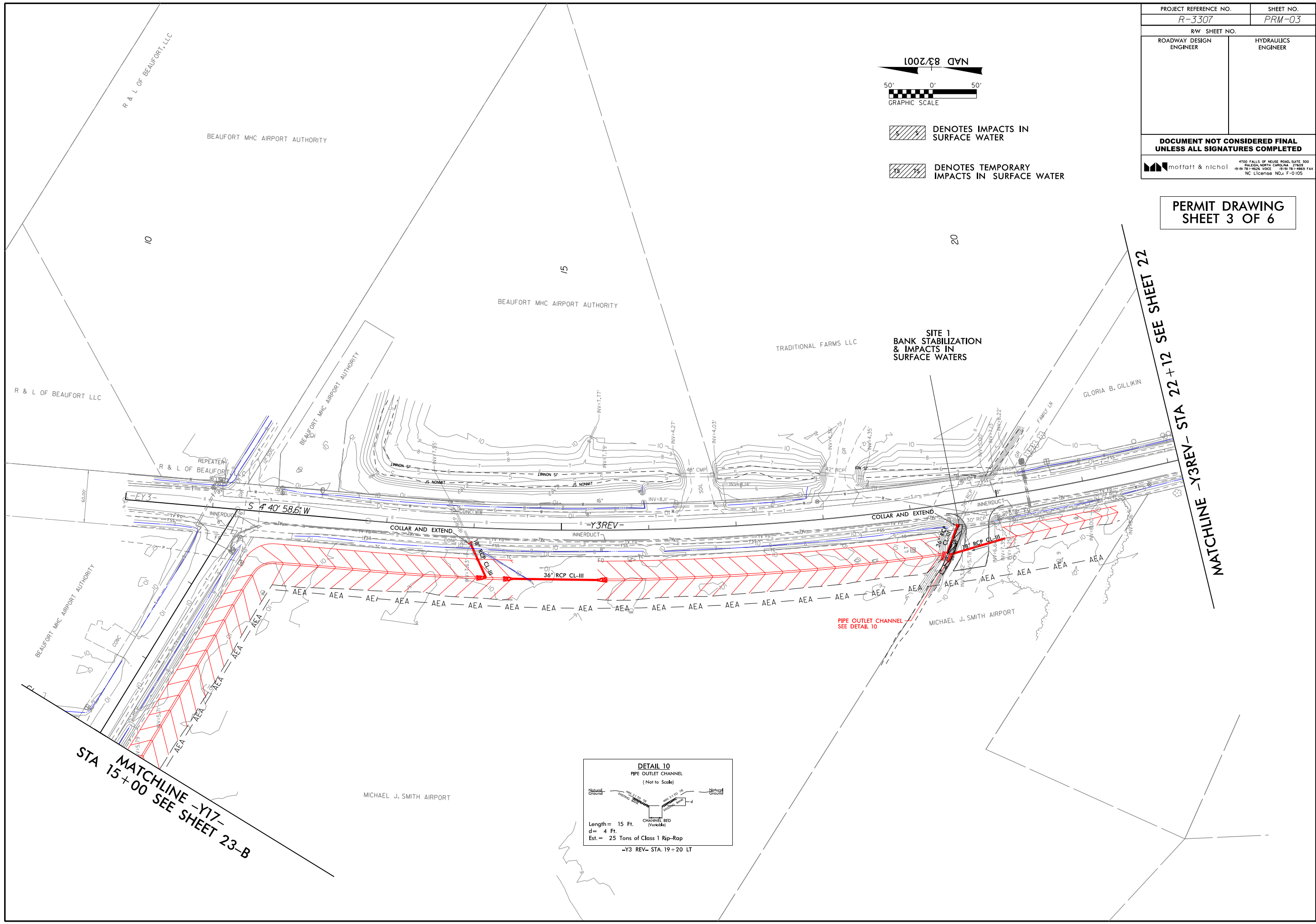


PROJECT REFERENCE NO. <i>R-3307</i>	SHEET NO. <i>PRM-03</i>
RW SHEET NO.	
ROADWAY DESIGN ENGINEER	HYDRAULICS ENGINEER
<b>DOCUMENT NOT CONSIDERED FINAL UNLESS ALL SIGNATURES COMPLETED</b>	
	

**PERMIT DRAWING  
SHEET 3 OF 6**

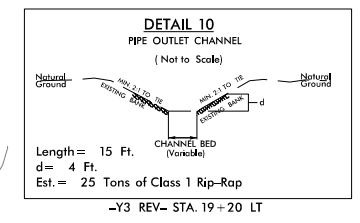


-  DENOTES IMPACTS IN SURFACE WATER
-  DENOTES TEMPORARY IMPACTS IN SURFACE WATER



**MATCHLINE -Y17-  
STA 15+00 SEE SHEET 23-B**

**MATCHLINE -Y3REV- STA 22+12 SEE SHEET 22**



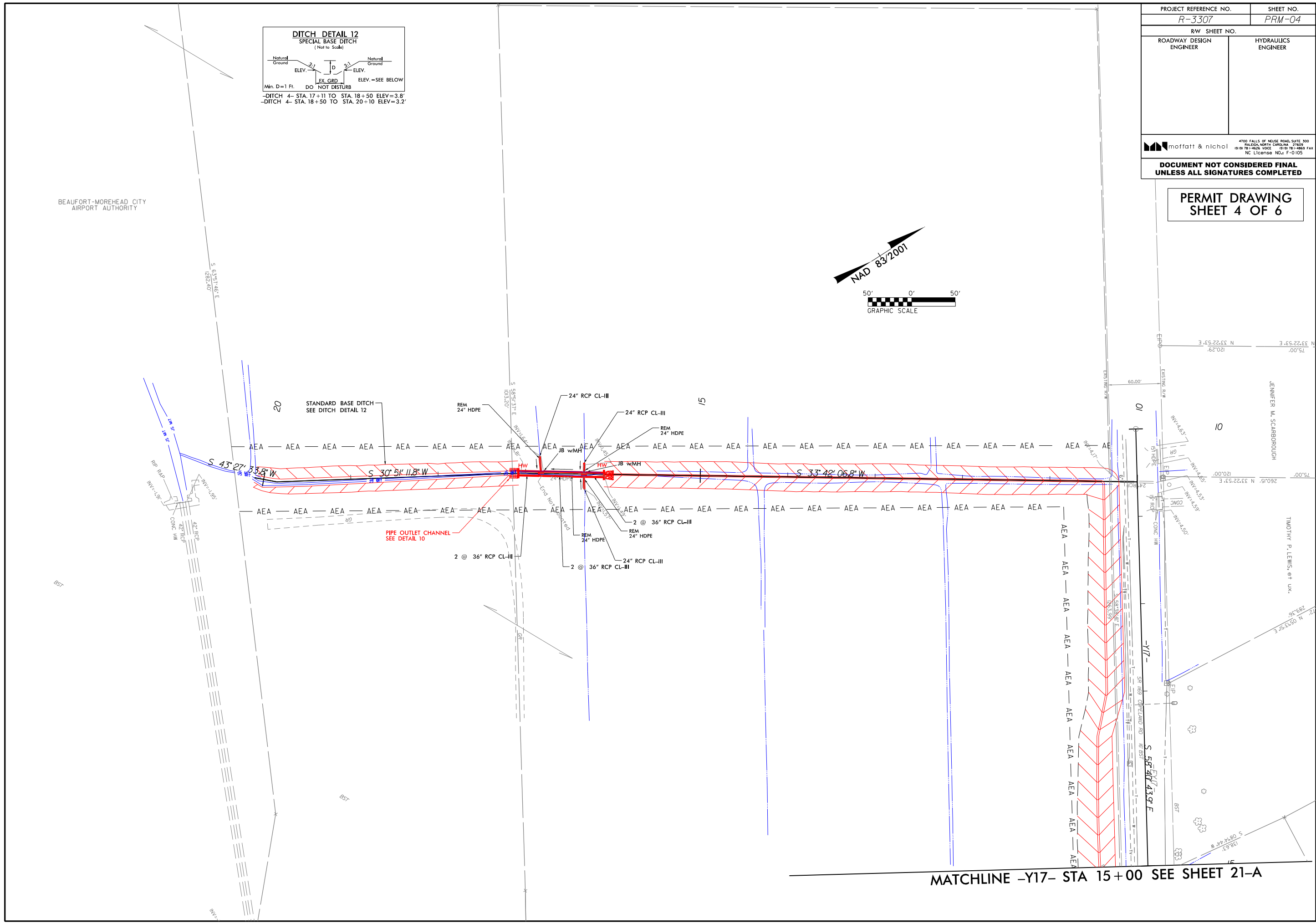
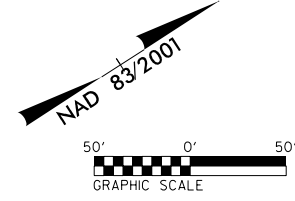
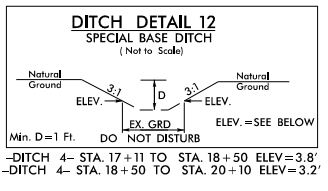
PROJECT REFERENCE NO. <i>R-3307</i>	SHEET NO. <i>PRM-04</i>
RW SHEET NO.	
ROADWAY DESIGN ENGINEER	HYDRAULICS ENGINEER

moffatt & nichol  
 4100 FALLS OF NEUSE ROAD, SUITE 300  
 RALEIGH, NORTH CAROLINA 27609  
 919 781-4626 VOICE 919 781-4868 FAX  
 NC License No. F-0105

**DOCUMENT NOT CONSIDERED FINAL  
 UNLESS ALL SIGNATURES COMPLETED**

**PERMIT DRAWING  
 SHEET 4 OF 6**

BEAUFORT-MOREHEAD CITY  
 AIRPORT AUTHORITY



MATCHLINE -Y17- STA 15+00 SEE SHEET 21-A



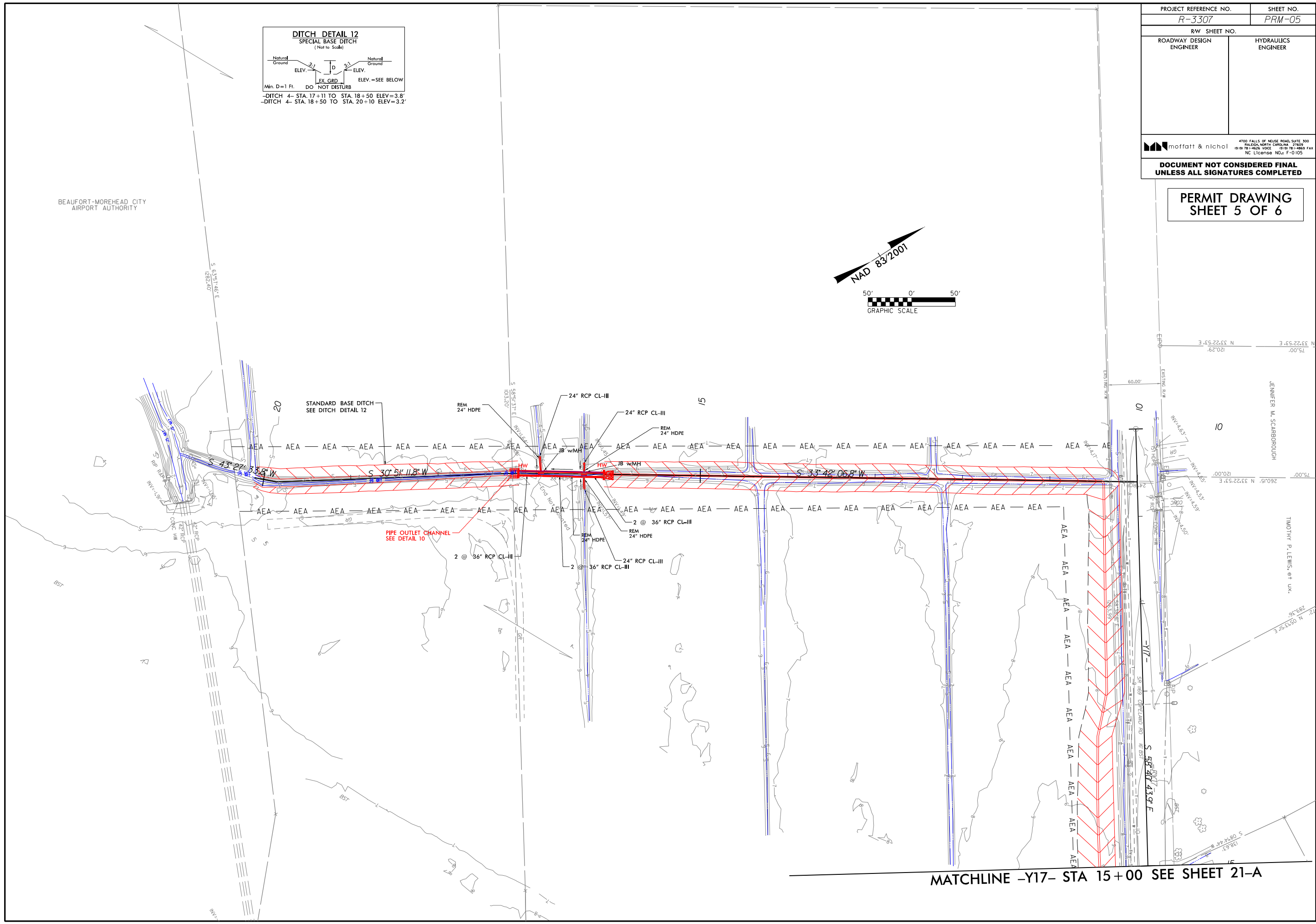
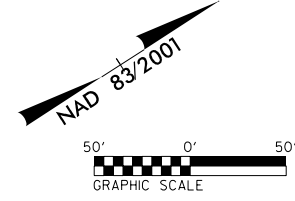
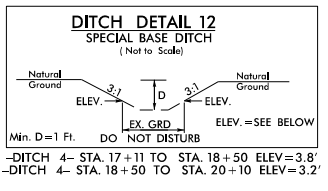
PROJECT REFERENCE NO. <i>R-3307</i>	SHEET NO. <i>PRM-05</i>
RW SHEET NO.	
ROADWAY DESIGN ENGINEER	HYDRAULICS ENGINEER

moffatt & nichol  
 4100 FALLS OF NEUSE ROAD, SUITE 300  
 RALEIGH, NORTH CAROLINA 27609  
 919 781-4626 VOICE 919 781-4863 FAX  
 NC License No. F-0105

**DOCUMENT NOT CONSIDERED FINAL  
 UNLESS ALL SIGNATURES COMPLETED**

**PERMIT DRAWING  
 SHEET 5 OF 6**

BEAUFORT-MOREHEAD CITY  
 AIRPORT AUTHORITY



MATCHLINE -Y17- STA 15+00 SEE SHEET 21-A

**WETLAND AND SURFACE WATER IMPACTS SUMMARY**

Site No.	Station (From/To)	Structure Size / Type	WETLAND IMPACTS					SURFACE WATER IMPACTS				
			Permanent Fill In Wetlands (ac)	Temp. Fill In Wetlands (ac)	Excavation in Wetlands (ac)	Mechanized Clearing in Wetlands (ac)	Hand Clearing in Wetlands (ac)	Permanent SW impacts (ac)	Temp. SW impacts (ac)	Existing Channel Impacts Permanent (ft)	Existing Channel Impacts Temp. (ft)	Natural Stream Design (ft)
1	-Y3 REV- 19+20 LT	BANK STABILIZATION						< 0.01	< 0.01	50.7	10	
<b>TOTALS*:</b>								< 0.01	< 0.01	51	10	0

\*Rounded totals are sum of actual impacts

NOTES:

NC DEPARTMENT OF TRANSPORTATION  
 DIVISION OF HIGHWAYS  
 7/3/2018  
 CARTERET COUNTY  
 R-3307  
 34528.3.FR1  
 SHEET      6                      OF                      6