

STATE	STATE PROJECT REFERENCE NO.	SHEET NO.	TOTAL SHEETS
N.C.	SF-060124	1	5

STATE OF NORTH CAROLINA
DEPARTMENT OF TRANSPORTATION
DIVISION OF HIGHWAYS
GEOTECHNICAL ENGINEERING UNIT

STRUCTURE
SUBSURFACE INVESTIGATION

PROJ. REFERENCE NO. 17BP.2.R.13 (SF-060124) F.A. PROJ. _____
COUNTY BEAUFORT
PROJECT DESCRIPTION CULVERT ON SR 1718 (N. SAVANNAH RD.)
OVER JACK CREEK AT -EL- STA. 12+17.36

CONTENTS

<u>SHEET</u>	<u>DESCRIPTION</u>
1	TITLE SHEET
2	LEGEND
3	SITE PLAN
4	PROFILE
5	BORE LOG

CAUTION NOTICE

THE SUBSURFACE INFORMATION AND THE SUBSURFACE INVESTIGATION ON WHICH IT IS BASED WERE MADE FOR THE PURPOSE OF STUDY, PLANNING, AND DESIGN, AND NOT FOR CONSTRUCTION OR PAY PURPOSES. THE VARIOUS FIELD BORING LOGS, ROCK CORES, AND SOIL TEST DATA AVAILABLE MAY BE REVIEWED OR INSPECTED IN RALEIGH BY CONTACTING THE N. C. DEPARTMENT OF TRANSPORTATION, GEOTECHNICAL ENGINEERING UNIT AT (919) 707-6850. NEITHER THE SUBSURFACE PLANS AND REPORTS, NOR THE FIELD BORING LOGS, ROCK CORES, OR SOIL TEST DATA ARE PART OF THE CONTRACT.

GENERAL SOIL AND ROCK STRATA DESCRIPTIONS AND INDICATED BOUNDARIES ARE BASED ON A GEOTECHNICAL INTERPRETATION OF ALL AVAILABLE SUBSURFACE DATA AND MAY NOT NECESSARILY REFLECT THE ACTUAL SUBSURFACE CONDITIONS BETWEEN BORINGS OR BETWEEN SAMPLED STRATA WITHIN THE BOREHOLE. THE LABORATORY SAMPLE DATA AND THE IN SITU (IN-PLACED) TEST DATA CAN BE RELIED ON ONLY TO THE DEGREE OF RELIABILITY INHERENT IN THE STANDARD TEST METHOD. THE OBSERVED WATER LEVELS OR SOIL MOISTURE CONDITIONS INDICATED IN THE SUBSURFACE INVESTIGATION ARE AS RECORDED AT THE TIME OF THE INVESTIGATION. THESE WATER LEVELS OR SOIL MOISTURE CONDITIONS MAY VARY CONSIDERABLY WITH TIME ACCORDING TO CLIMATIC CONDITIONS INCLUDING TEMPERATURES, PRECIPITATION, AND WIND, AS WELL AS OTHER NON-CLIMATIC FACTORS.

THE BIDDER OR CONTRACTOR IS CAUTIONED THAT DETAILS SHOWN ON THE SUBSURFACE PLANS ARE PRELIMINARY ONLY AND IN MANY CASES THE FINAL DESIGN DETAILS ARE DIFFERENT. FOR BIDDING AND CONSTRUCTION PURPOSES, REFER TO THE CONSTRUCTION PLANS AND DOCUMENTS FOR FINAL DESIGN INFORMATION ON THIS PROJECT. THE DEPARTMENT DOES NOT WARRANT OR GUARANTEE THE SUFFICIENCY OR ACCURACY OF THE INVESTIGATION MADE, NOR THE INTERPRETATIONS MADE, OR OPINION OF THE DEPARTMENT AS TO THE TYPE OF MATERIALS AND CONDITIONS TO BE ENCOUNTERED. THE BIDDER OR CONTRACTOR IS CAUTIONED TO MAKE SUCH INDEPENDENT SUBSURFACE INVESTIGATIONS AS HE DEEMS NECESSARY TO SATISFY HIMSELF AS TO CONDITIONS TO BE ENCOUNTERED ON THIS PROJECT. THE CONTRACTOR SHALL HAVE NO CLAIM FOR ADDITIONAL COMPENSATION OR FOR AN EXTENSION OF TIME FOR ANY REASON RESULTING FROM THE ACTUAL CONDITIONS ENCOUNTERED AT THE SITE DIFFERING FROM THOSE INDICATED IN THE SUBSURFACE INFORMATION.

PERSONNEL

C.M. WRIKE

R.E. SMITH

D.G. PINTER

INVESTIGATED BY T.C. BOTTOMS

CHECKED BY D.N. ARGENBRIGHT

SUBMITTED BY D.N. ARGENBRIGHT

DATE APRIL 2013



PROJECT: 17BP.2.R.13 ID: SF-060124

DRAWN BY: C.P. TURNER

NOTE - THE INFORMATION CONTAINED HEREIN IS NOT IMPLIED OR GUARANTEED BY THE N. C. DEPARTMENT OF TRANSPORTATION AS BEING ACCURATE NOR IS IT CONSIDERED TO BE PART OF THE PLANS, SPECIFICATIONS, OR CONTRACT FOR THE PROJECT.

NOTE - BY HAVING REQUESTED THIS INFORMATION THE CONTRACTOR SPECIFICALLY WAIVES ANY CLAIMS FOR INCREASED COMPENSATION OR EXTENSION OF TIME BASED ON DIFFERENCES BETWEEN THE CONDITIONS INDICATED HEREIN AND THE ACTUAL CONDITIONS AT THE PROJECT SITE.

NORTH CAROLINA DEPARTMENT OF TRANSPORTATION
DIVISION OF HIGHWAYS
GEOTECHNICAL ENGINEERING UNIT

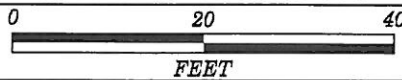
PROJECT REFERENCE NO. SF-060124	SHEET NO. 2 OF 5
------------------------------------	---------------------

SUBSURFACE INVESTIGATION

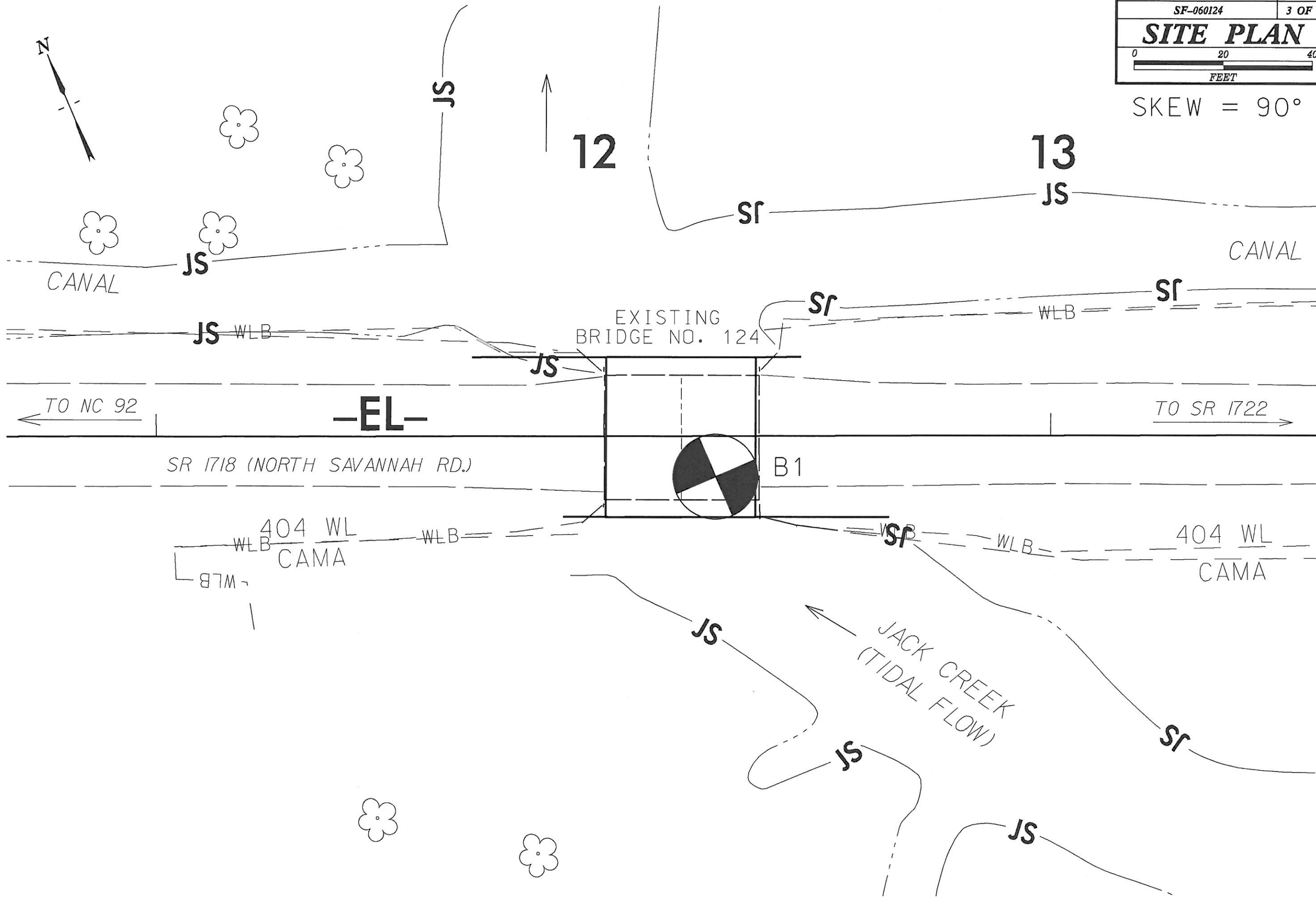
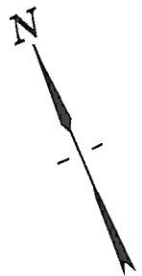
SOIL AND ROCK LEGEND, TERMS, SYMBOLS, AND ABBREVIATIONS

SOIL DESCRIPTION	GRADATION	ROCK DESCRIPTION	TERMS AND DEFINITIONS
SOIL IS CONSIDERED TO BE THE UNCONSOLIDATED, SEMI-CONSOLIDATED, OR WEATHERED EARTH MATERIALS THAT CAN BE PENETRATED WITH A CONTINUOUS FLIGHT POWER AUGER, AND YIELD LESS THAN 100 BLOWS PER FOOT ACCORDING TO STANDARD PENETRATION TEST (ASTM D-1586). SOIL CLASSIFICATION IS BASED ON THE AASHTO SYSTEM. BASIC DESCRIPTIONS GENERALLY SHALL INCLUDE: CONSISTENCY, COLOR, TEXTURE, MOISTURE, AASHTO CLASSIFICATION, AND OTHER PERTINENT FACTORS SUCH AS MINERALOGICAL COMPOSITION, ANGULARITY, STRUCTURE, PLASTICITY, ETC. EXAMPLES: <i>VERY STIFF, GRAIN SILTY CLAY, MOST WITH INTERBEDDED FINE SAND LAYERS, HIGH PLASTIC, A-7-6</i>	WELL GRADED - INDICATES A GOOD REPRESENTATION OF PARTICLE SIZES FROM FINE TO COARSE. UNIFORM - INDICATES THAT SOIL PARTICLES ARE ALL APPROXIMATELY THE SAME SIZE. (ALSO POORLY GRADED) GAP-GRADED - INDICATES A MIXTURE OF UNIFORM PARTICLES OF TWO OR MORE SIZES. ANGULARITY OF GRAINS THE ANGULARITY OR ROUNDNESS OF SOIL GRAINS IS DESIGNATED BY THE TERMS: ANGULAR , SUBANGULAR , SUBROUNDED , OR ROUNDED .	HARD ROCK IS NON-COASTAL PLAIN MATERIAL THAT IF TESTED, WOULD YIELD SPT REFUSAL. AN INFERRED ROCK LINE INDICATES THE LEVEL AT WHICH NON-COASTAL PLAIN MATERIAL WOULD YIELD SPT REFUSAL. SPT REFUSAL IS PENETRATION BY A SPLIT SPOON SAMPLER EQUAL TO OR LESS THAN 0.1 FOOT PER 60 BLOWS. IN NON-COASTAL PLAIN MATERIAL, THE TRANSITION BETWEEN SOIL AND ROCK IS OFTEN REPRESENTED BY A ZONE OF WEATHERED ROCK. ROCK MATERIALS ARE TYPICALLY DIVIDED AS FOLLOWS: WEATHERED ROCK (WR) CRYSTALLINE ROCK (CR) NON-CRYSTALLINE ROCK (NCR) COASTAL PLAIN SEDIMENTARY ROCK (CP)	ALLUVIUM (ALLUV.) - SOILS THAT HAVE BEEN TRANSPORTED BY WATER. AQUIFER - A WATER BEARING FORMATION OR STRATA. ARENACEOUS - APPLIED TO ROCKS THAT HAVE BEEN DERIVED FROM SAND OR THAT CONTAIN SAND. ARGILLACEOUS - APPLIED TO ALL ROCKS OR SUBSTANCES COMPOSED OF CLAY MINERALS, OR HAVING A NOTABLE PROPORTION OF CLAY IN THEIR COMPOSITION, AS SHALE, SLATE, ETC. ARTESIAN - GROUND WATER THAT IS UNDER SUFFICIENT PRESSURE TO RISE ABOVE THE LEVEL AT WHICH IT IS ENCOUNTERED, BUT WHICH DOES NOT NECESSARILY RISE TO OR ABOVE THE GROUND SURFACE. CALCAREOUS (CALC.) - SOILS THAT CONTAIN APPRECIABLE AMOUNTS OF CALCIUM CARBONATE. COLLUVIUM - ROCK FRAGMENTS MIXED WITH SOIL DEPOSITED BY GRAVITY ON SLOPE OR AT BOTTOM OF SLOPE. CORE RECOVERY (REC.) - TOTAL LENGTH OF ALL MATERIAL RECOVERED IN THE CORE BARREL DIVIDED BY TOTAL LENGTH OF CORE RUN AND EXPRESSED AS A PERCENTAGE. DIKE - A TABULAR BODY OF IGNEOUS ROCK THAT CUTS ACROSS THE STRUCTURE OF ADJACENT ROCKS OR CUTS MASSIVE ROCK. DIP - THE ANGLE AT WHICH A STRATUM OR ANY PLANAR FEATURE IS INCLINED FROM THE HORIZONTAL. DIP DIRECTION (DIP AZIMUTH) - THE DIRECTION OR BEARING OF THE HORIZONTAL TRACE OF THE LINE OF DIP, MEASURED CLOCKWISE FROM NORTH. FAULT - A FRACTURE OR FRACTURE ZONE ALONG WHICH THERE HAS BEEN DISPLACEMENT OF THE SIDES RELATIVE TO ONE ANOTHER PARALLEL TO THE FRACTURE. FISSILE - A PROPERTY OF SPLITTING ALONG CLOSELY SPACED PARALLEL PLANES. FLOAT - ROCK FRAGMENTS ON SURFACE NEAR THEIR ORIGINAL POSITION AND DISLODGED FROM PARENT MATERIAL. FLOOD PLAIN (FP) - LAND BORDERING A STREAM, BUILT OF SEDIMENTS DEPOSITED BY THE STREAM. FORMATION (FM) - A MAPPABLE GEOLOGIC UNIT THAT CAN BE RECOGNIZED AND TRACED IN THE FIELD. JOINT - FRACTURE IN ROCK ALONG WHICH NO APPRECIABLE MOVEMENT HAS OCCURRED. LEDGE - A SHELF-LIKE RIDGE OR PROJECTION OF ROCK WHOSE THICKNESS IS SMALL COMPARED TO ITS LATERAL EXTENT. LENS - A BODY OF SOIL OR ROCK THAT THINS OUT IN ONE OR MORE DIRECTIONS. MOTTLED (MOT.) - IRREGULARLY MARKED WITH SPOTS OF DIFFERENT COLORS. MOTTLING IN SOILS USUALLY INDICATES POOR AERATION AND LACK OF GOOD DRAINAGE. PERCHED WATER - WATER MAINTAINED ABOVE THE NORMAL GROUND WATER LEVEL BY THE PRESENCE OF AN INTERVENING IMPERVIOUS STRATUM. RESIDUAL (RES.) SOIL - SOIL FORMED IN PLACE BY THE WEATHERING OF ROCK. ROCK QUALITY DESIGNATION (RQD) - A MEASURE OF ROCK QUALITY DESCRIBED BY TOTAL LENGTH OF ROCK SEGMENTS EQUAL TO OR GREATER THAN 4 INCHES DIVIDED BY THE TOTAL LENGTH OF CORE RUN AND EXPRESSED AS A PERCENTAGE. SAPROLITE (SAP.) - RESIDUAL SOIL THAT RETAINS THE RELIC STRUCTURE OR FABRIC OF THE PARENT ROCK. SILL - AN INTRUSIVE BODY OF IGNEOUS ROCK OF APPROXIMATELY UNIFORM THICKNESS AND RELATIVELY THIN COMPARED WITH ITS LATERAL EXTENT, THAT HAS BEEN EMPLACED PARALLEL TO THE BEDDING OR SCHISTOSITY OF THE INTRUDED ROCKS. SLICKENSIDE - POLISHED AND STRIATED SURFACE THAT RESULTS FROM FRICTION ALONG A FAULT OR SLIP PLANE. STANDARD PENETRATION TEST (PENETRATION RESISTANCE) (SPT) - NUMBER OF BLOWS (IN OR BPF) OF A 140 LB. HAMMER FALLING 30 INCHES REQUIRED TO PRODUCE A PENETRATION OF 1 FOOT INTO SOIL WITH A 2 INCH OUTSIDE DIAMETER SPLIT SPOON SAMPLER. SPT REFUSAL IS PENETRATION EQUAL TO OR LESS THAN 0.1 FOOT PER 60 BLOWS. STRATA CORE RECOVERY (SREC.) - TOTAL LENGTH OF STRATA MATERIAL RECOVERED DIVIDED BY TOTAL LENGTH OF STRATUM AND EXPRESSED AS A PERCENTAGE. STRATA ROCK QUALITY DESIGNATION (SRQD) - A MEASURE OF ROCK QUALITY DESCRIBED BY TOTAL LENGTH OF ROCK SEGMENTS WITHIN A STRATUM EQUAL TO OR GREATER THAN 4 INCHES DIVIDED BY THE TOTAL LENGTH OF STRATA AND EXPRESSED AS A PERCENTAGE. TOPSOIL (TS.) - SURFACE SOILS USUALLY CONTAINING ORGANIC MATTER.
SOIL LEGEND AND AASHTO CLASSIFICATION	MINERALOGICAL COMPOSITION	WEATHERING	
GENERAL CLASS. GRANULAR MATERIALS (≤ 35% PASSING #200) SILT-CLAY MATERIALS (> 35% PASSING #200) ORGANIC MATERIALS	MINERAL NAMES SUCH AS QUARTZ, FELDSPAR, MICA, TALC, KAOLIN, ETC. ARE USED IN DESCRIPTIONS WHENEVER THEY ARE CONSIDERED OF SIGNIFICANCE.	FRESH - ROCK FRESH, CRYSTALS BRIGHT, FEW JOINTS MAY SHOW SLIGHT STAINING, ROCK RINGS UNDER HAMMER IF CRYSTALLINE. VERY SLIGHT (V SL.) - ROCK GENERALLY FRESH, JOINTS STAINED, SOME JOINTS MAY SHOW THIN CLAY COATINGS IF OPEN, CRYSTALS ON A BROKEN SPECIMEN FACE SHINE BRIGHTLY. ROCK RINGS UNDER HAMMER BLOWS IF OF A CRYSTALLINE NATURE. SLIGHT (SL.) - ROCK GENERALLY FRESH, JOINTS STAINED AND DISCOLORATION EXTENDS INTO ROCK UP TO 1 INCH. OPEN JOINTS MAY CONTAIN CLAY. IN GRANITOID ROCKS SOME OCCASIONAL FELDSPAR CRYSTALS ARE DULL AND DISCOLORED. CRYSTALLINE ROCKS RING UNDER HAMMER BLOWS. MODERATE (MOD.) - SIGNIFICANT PORTIONS OF ROCK SHOW DISCOLORATION AND WEATHERING EFFECTS. IN GRANITOID ROCKS, MOST FELDSPARS ARE DULL AND DISCOLORED, SOME SHOW CLAY. ROCK HAS DULL SOUND UNDER HAMMER BLOWS AND SHOWS SIGNIFICANT LOSS OF STRENGTH AS COMPARED WITH FRESH ROCK. MODERATELY SEVERE (MOD. SEV.) - ALL ROCK EXCEPT QUARTZ DISCOLORED OR STAINED. IN GRANITOID ROCKS, ALL FELDSPARS DULL AND DISCOLORED AND A MAJORITY SHOW KAOLINIZATION. ROCK SHOWS SEVERE LOSS OF STRENGTH AND CAN BE EXCAVATED WITH A GEOLOGIST'S PICK. ROCK GIVES 'CLUNK' SOUND WHEN STRUCK. <i>IF TESTED, WOULD YIELD SPT REFUSAL</i> SEVERE (SEV.) - ALL ROCK EXCEPT QUARTZ DISCOLORED OR STAINED. ROCK FABRIC CLEAR AND EVIDENT BUT REDUCED IN STRENGTH TO STRONG SOIL. IN GRANITOID ROCKS SOME OCCASIONAL FELDSPARS ARE KAOLINIZED TO SOME EXTENT. SOME FRAGMENTS OF STRONG ROCK USUALLY REMAIN. <i>IF TESTED, YIELDS SPT N VALUES > 100 BPF</i> VERY SEVERE (V SEV.) - ALL ROCK EXCEPT QUARTZ DISCOLORED OR STAINED. ROCK FABRIC ELEMENTS ARE DISCERNIBLE BUT THE MASS IS EFFECTIVELY REDUCED TO SOIL STATUS, WITH ONLY FRAGMENTS OF STRONG ROCK REMAINING. SAPROLITE IS AN EXAMPLE OF ROCK WEATHERED TO A DEGREE SUCH THAT ONLY MINOR VESTIGES OF THE ORIGINAL ROCK FABRIC REMAIN. <i>IF TESTED, YIELDS SPT N VALUES < 100 BPF</i> COMPLETE - ROCK REDUCED TO SOIL. ROCK FABRIC NOT DISCERNIBLE OR DISCERNIBLE ONLY IN SMALL AND SCATTERED CONCENTRATIONS. QUARTZ MAY BE PRESENT AS DIKES OR STRINGERS. SAPROLITE IS ALSO AN EXAMPLE.	
COMPRESSIBILITY SLIGHTLY COMPRESSIBLE MODERATELY COMPRESSIBLE HIGHLY COMPRESSIBLE	PERCENTAGE OF MATERIAL ORGANIC MATERIAL GRANULAR SOILS SILT-CLAY SOILS OTHER MATERIAL TRACE OF ORGANIC MATTER 2 - 3% 3 - 5% TRACE 1 - 10% LITTLE ORGANIC MATTER 3 - 5% 5 - 12% LITTLE 10 - 20% MODERATELY ORGANIC 5 - 10% 12 - 20% SOME 20 - 35% HIGHLY ORGANIC >10% >20% HIGHLY 35% AND ABOVE	GROUND WATER WATER LEVEL IN BORE HOLE IMMEDIATELY AFTER DRILLING STATIC WATER LEVEL AFTER 24 HOURS PERCHED WATER, SATURATED ZONE, OR WATER BEARING STRATA SPRING OR SEEP	
CONSISTENCY OR DENSENESS	MISCELLANEOUS SYMBOLS	ROCK HARDNESS	
PRIMARY SOIL TYPE COMPACTNESS OR CONSISTENCY RANGE OF STANDARD PENETRATION RESISTANCE (N-VALUE) RANGE OF UNCONFINED COMPRESSIVE STRENGTH (TONS/F ²)	ROADWAY EMBANKMENT (RE) WITH SOIL DESCRIPTION SOIL SYMBOL ARTIFICIAL FILL (AF) OTHER THAN ROADWAY EMBANKMENT INFERRED SOIL BOUNDARY INFERRED ROCK LINE ALLUVIAL SOIL BOUNDARY DIP & DIP DIRECTION OF ROCK STRUCTURES	VERY HARD - CANNOT BE SCRATCHED BY KNIFE OR SHARP PICK. BREAKING OF HAND SPECIMENS REQUIRES SEVERAL HARD BLOWS OF THE GEOLOGIST'S PICK. HARD - CAN BE SCRATCHED BY KNIFE OR PICK ONLY WITH DIFFICULTY. HARD HAMMER BLOWS REQUIRED TO DETACH HAND SPECIMEN. MODERATELY HARD - CAN BE SCRATCHED BY KNIFE OR PICK. GOUGES OR GROOVES TO 0.25 INCHES DEEP CAN BE EXCAVATED BY HARD BLOW OF A GEOLOGIST'S PICK. HAND SPECIMENS CAN BE DETACHED BY MODERATE BLOWS. MEDIUM HARD - CAN BE GROOVED OR GOUGED 0.05 INCHES DEEP BY FIRM PRESSURE OF KNIFE OR PICK POINT. CAN BE EXCAVATED IN SMALL CHIPS TO PEICES 1 INCH MAXIMUM SIZE BY HARD BLOWS OF THE POINT OF A GEOLOGIST'S PICK. SOFT - CAN BE GROOVED OR GOUGED READILY BY KNIFE OR PICK. CAN BE EXCAVATED IN FRAGMENTS FROM CHIPS TO SEVERAL INCHES IN SIZE BY MODERATE BLOWS OF A PICK POINT. SMALL, THIN PIECES CAN BE BROKEN BY FINGER PRESSURE. VERY SOFT - CAN BE CARVED WITH KNIFE. CAN BE EXCAVATED READILY WITH POINT OF PICK. PIECES 1 INCH OR MORE IN THICKNESS CAN BE BROKEN BY FINGER PRESSURE. CAN BE SCRATCHED READILY BY FINGER NAIL.	SAPROLITE (SAP.) - RESIDUAL SOIL THAT RETAINS THE RELIC STRUCTURE OR FABRIC OF THE PARENT ROCK. SILL - AN INTRUSIVE BODY OF IGNEOUS ROCK OF APPROXIMATELY UNIFORM THICKNESS AND RELATIVELY THIN COMPARED WITH ITS LATERAL EXTENT, THAT HAS BEEN EMPLACED PARALLEL TO THE BEDDING OR SCHISTOSITY OF THE INTRUDED ROCKS. SLICKENSIDE - POLISHED AND STRIATED SURFACE THAT RESULTS FROM FRICTION ALONG A FAULT OR SLIP PLANE. STANDARD PENETRATION TEST (PENETRATION RESISTANCE) (SPT) - NUMBER OF BLOWS (IN OR BPF) OF A 140 LB. HAMMER FALLING 30 INCHES REQUIRED TO PRODUCE A PENETRATION OF 1 FOOT INTO SOIL WITH A 2 INCH OUTSIDE DIAMETER SPLIT SPOON SAMPLER. SPT REFUSAL IS PENETRATION EQUAL TO OR LESS THAN 0.1 FOOT PER 60 BLOWS. STRATA CORE RECOVERY (SREC.) - TOTAL LENGTH OF STRATA MATERIAL RECOVERED DIVIDED BY TOTAL LENGTH OF STRATUM AND EXPRESSED AS A PERCENTAGE. STRATA ROCK QUALITY DESIGNATION (SRQD) - A MEASURE OF ROCK QUALITY DESCRIBED BY TOTAL LENGTH OF ROCK SEGMENTS WITHIN A STRATUM EQUAL TO OR GREATER THAN 4 INCHES DIVIDED BY THE TOTAL LENGTH OF STRATA AND EXPRESSED AS A PERCENTAGE. TOPSOIL (TS.) - SURFACE SOILS USUALLY CONTAINING ORGANIC MATTER.
TEXTURE OR GRAIN SIZE	ABBREVIATIONS	TEXTURE OR GRAIN SIZE	
U.S. STD. SIEVE SIZE OPENING (MM) 4 10 40 60 200 270 4.75 2.00 0.42 0.25 0.075 0.053	AR - AUGER REFUSAL BT - BORING TERMINATED CL - CLAY CPT - CONE PENETRATION TEST CSE - COARSE DMT - DILATOMETER TEST DPT - DYNAMIC PENETRATION TEST e - VOID RATIO F - FINE FDSS - FIDUCIARY FRAC. - FRACTURED, FRACTURES FRAGS. - FRAGMENTS HI. - HIGHLY MED. - MEDIUM MICA - MICACEOUS MOD. - MODERATELY NP - NON PLASTIC ORG. - ORGANIC PMT - PRESSUREMETER TEST SAP. - SAPROLITIC SD. - SAND, SANDY SL. - SILT, SILTY SLI. - SLIGHTLY TCR - TRICONE REFUSAL w - MOISTURE CONTENT V - VERY VST - VANE SHEAR TEST WEA. - WEATHERED UNIT WEIGHT DRY UNIT WEIGHT SAMPLE ABBREVIATIONS S - BULK SS - SPLIT SPOON ST - SHELBY TUBE RS - ROCK RT - RECOMPACTED TRIAXIAL CBR - CALIFORNIA BEARING RATIO	BOULDER (BLDR.) COBBLE (COB.) GRAVEL (GR.) COARSE SAND (CSE. SD.) FINE SAND (F SD.) SILT (SL.) CLAY (CL.) GRAIN SIZE MM 305 75 2.0 0.25 0.05 0.005 IN. 12 3	
SOIL MOISTURE - CORRELATION OF TERMS	EQUIPMENT USED ON SUBJECT PROJECT	TEXTURE OR GRAIN SIZE	
SOIL MOISTURE SCALE (ATTERBERG LIMITS) FIELD MOISTURE DESCRIPTION GUIDE FOR FIELD MOISTURE DESCRIPTION	DRILL UNITS: MOBILE B- BK-51 CME-45C CME-550 PORTABLE HOIST ADVANCING TOOLS: CLAY BITS 6" CONTINUOUS FLIGHT AUGER 8" HOLLOW AUGERS HARD FACED FINGER BITS TUNG-CARBIDE INSERTS CASING w/ ADVANCER TRICONE 2 15/16" STEEL TEETH TRICONE TUNG-CARB. CORE BIT HAMMER TYPE: AUTOMATIC MANUAL CORE SIZE: B N H HAND TOOLS: POST HOLE DIGGER HAND AUGER SOUNDING ROD VANE SHEAR TEST	U.S. STD. SIEVE SIZE OPENING (MM) 4 10 40 60 200 270 4.75 2.00 0.42 0.25 0.075 0.053 BOULDER (BLDR.) COBBLE (COB.) GRAVEL (GR.) COARSE SAND (CSE. SD.) FINE SAND (F SD.) SILT (SL.) CLAY (CL.) GRAIN SIZE MM 305 75 2.0 0.25 0.05 0.005 IN. 12 3	
LL - LIQUID LIMIT PL - PLASTIC LIMIT OM - OPTIMUM MOISTURE SL - SHRINKAGE LIMIT	FRACTURE SPACING TERM SPACING VERY WIDE MORE THAN 10 FEET WIDE 3 TO 10 FEET MODERATELY CLOSE 1 TO 3 FEET CLOSE 0.16 TO 1 FEET VERY CLOSE LESS THAN 0.16 FEET BEDDING TERM THICKNESS VERY THICKLY BEDDED > 4 FEET THICKLY BEDDED 1.5 - 4 FEET THINLY BEDDED 0.16 - 1.5 FEET VERY THINLY BEDDED 0.03 - 0.16 FEET THICKLY LAMINATED 0.008 - 0.03 FEET THINLY LAMINATED < 0.008 FEET INDURATION FOR SEDIMENTARY ROCKS, INDURATION IS THE HARDENING OF THE MATERIAL BY CEMENTING, HEAT, PRESSURE, ETC. FRIABLE RUBBING WITH FINGER FREES NUMEROUS GRAINS; GENTLE BLOW BY HAMMER DISINTEGRATES SAMPLE. MODERATELY INDURATED GRAINS CAN BE SEPARATED FROM SAMPLE WITH STEEL PROBE; BREAKS EASILY WHEN HIT WITH HAMMER. INDURATED GRAINS ARE DIFFICULT TO SEPARATE WITH STEEL PROBE; DIFFICULT TO BREAK WITH HAMMER. EXTREMELY INDURATED SHARP HAMMER BLOWS REQUIRED TO BREAK SAMPLE; SAMPLE BREAKS ACROSS GRAINS.	LL - LIQUID LIMIT PL - PLASTIC LIMIT OM - OPTIMUM MOISTURE SL - SHRINKAGE LIMIT	FRACTURE SPACING TERM SPACING VERY WIDE MORE THAN 10 FEET WIDE 3 TO 10 FEET MODERATELY CLOSE 1 TO 3 FEET CLOSE 0.16 TO 1 FEET VERY CLOSE LESS THAN 0.16 FEET BEDDING TERM THICKNESS VERY THICKLY BEDDED > 4 FEET THICKLY BEDDED 1.5 - 4 FEET THINLY BEDDED 0.16 - 1.5 FEET VERY THINLY BEDDED 0.03 - 0.16 FEET THICKLY LAMINATED 0.008 - 0.03 FEET THINLY LAMINATED < 0.008 FEET INDURATION FOR SEDIMENTARY ROCKS, INDURATION IS THE HARDENING OF THE MATERIAL BY CEMENTING, HEAT, PRESSURE, ETC. FRIABLE RUBBING WITH FINGER FREES NUMEROUS GRAINS; GENTLE BLOW BY HAMMER DISINTEGRATES SAMPLE. MODERATELY INDURATED GRAINS CAN BE SEPARATED FROM SAMPLE WITH STEEL PROBE; BREAKS EASILY WHEN HIT WITH HAMMER. INDURATED GRAINS ARE DIFFICULT TO SEPARATE WITH STEEL PROBE; DIFFICULT TO BREAK WITH HAMMER. EXTREMELY INDURATED SHARP HAMMER BLOWS REQUIRED TO BREAK SAMPLE; SAMPLE BREAKS ACROSS GRAINS.
PLASTICITY		PLASTICITY	
NONPLASTIC LOW PLASTICITY MED. PLASTICITY HIGH PLASTICITY		PLASTICITY INDEX (PI) DRY STRENGTH 0-5 VERY LOW 6-15 SLIGHT 16-25 MEDIUM 26 OR MORE HIGH	
COLOR		COLOR	
DESCRIPTIONS MAY INCLUDE COLOR OR COLOR COMBINATIONS (TAN, RED, YELLOW-BROWN, BLUE-GRAY). MODIFIERS SUCH AS LIGHT, DARK, STREAKED, ETC. ARE USED TO DESCRIBE APPEARANCE.		DESCRIPTIONS MAY INCLUDE COLOR OR COLOR COMBINATIONS (TAN, RED, YELLOW-BROWN, BLUE-GRAY). MODIFIERS SUCH AS LIGHT, DARK, STREAKED, ETC. ARE USED TO DESCRIBE APPEARANCE.	
		TEXTURE OR GRAIN SIZE	
		U.S. STD. SIEVE SIZE OPENING (MM) 4 10 40 60 200 270 4.75 2.00 0.42 0.25 0.075 0.053 BOULDER (BLDR.) COBBLE (COB.) GRAVEL (GR.) COARSE SAND (CSE. SD.) FINE SAND (F SD.) SILT (SL.) CLAY (CL.) GRAIN SIZE MM 305 75 2.0 0.25 0.05 0.005 IN. 12 3	
		SOIL MOISTURE - CORRELATION OF TERMS	
		LL - LIQUID LIMIT PL - PLASTIC LIMIT OM - OPTIMUM MOISTURE SL - SHRINKAGE LIMIT	
		PLASTICITY	
		PLASTICITY INDEX (PI) DRY STRENGTH 0-5 VERY LOW 6-15 SLIGHT 16-25 MEDIUM 26 OR MORE HIGH	
		COLOR	
		DESCRIPTIONS MAY INCLUDE COLOR OR COLOR COMBINATIONS (TAN, RED, YELLOW-BROWN, BLUE-GRAY). MODIFIERS SUCH AS LIGHT, DARK, STREAKED, ETC. ARE USED TO DESCRIBE APPEARANCE.	
		TEXTURE OR GRAIN SIZE	
		U.S. STD. SIEVE SIZE OPENING (MM) 4 10 40 60 200 270 4.75 2.00 0.42 0.25 0.075 0.053 BOULDER (BLDR.) COBBLE (COB.) GRAVEL (GR.) COARSE SAND (CSE. SD.) FINE SAND (F SD.) SILT (SL.) CLAY (CL.) GRAIN SIZE MM 305 75 2.0 0.25 0.05 0.005 IN. 12 3	
		SOIL MOISTURE - CORRELATION OF TERMS	
		LL - LIQUID LIMIT PL - PLASTIC LIMIT OM - OPTIMUM MOISTURE SL - SHRINKAGE LIMIT	
		PLASTICITY	
		PLASTICITY INDEX (PI) DRY STRENGTH 0-5 VERY LOW 6-15 SLIGHT 16-25 MEDIUM 26 OR MORE HIGH	
		COLOR	
		DESCRIPTIONS MAY INCLUDE COLOR OR COLOR COMBINATIONS (TAN, RED, YELLOW-BROWN, BLUE-GRAY). MODIFIERS SUCH AS LIGHT, DARK, STREAKED, ETC. ARE USED TO DESCRIBE APPEARANCE.	
		TEXTURE OR GRAIN SIZE	
		U.S. STD. SIEVE SIZE OPENING (MM) 4 10 40 60 200 270 4.75 2.00 0.42 0.25 0.075 0.053 BOULDER (BLDR.) COBBLE (COB.) GRAVEL (GR.) COARSE SAND (CSE. SD.) FINE SAND (F SD.) SILT (SL.) CLAY (CL.) GRAIN SIZE MM 305 75 2.0 0.25 0.05 0.005 IN. 12 3	
		SOIL MOISTURE - CORRELATION OF TERMS	
		LL - LIQUID LIMIT PL - PLASTIC LIMIT OM - OPTIMUM MOISTURE SL - SHRINKAGE LIMIT	
		PLASTICITY	
		PLASTICITY INDEX (PI) DRY STRENGTH 0-5 VERY LOW 6-15 SLIGHT 16-25 MEDIUM 26 OR MORE HIGH	
		COLOR	
		DESCRIPTIONS MAY INCLUDE COLOR OR COLOR COMBINATIONS (TAN, RED, YELLOW-BROWN, BLUE-GRAY). MODIFIERS SUCH AS LIGHT, DARK, STREAKED, ETC. ARE USED TO DESCRIBE APPEARANCE.	
		TEXTURE OR GRAIN SIZE	
		U.S. STD. SIEVE SIZE OPENING (MM) 4 10 40 60 200 270 4.75 2.00 0.42 0.25 0.075 0.053 BOULDER (BLDR.) COBBLE (COB.) GRAVEL (GR.) COARSE SAND (CSE. SD.) FINE SAND (F SD.) SILT (SL.) CLAY (CL.) GRAIN SIZE MM 305 75 2.0 0.25 0.05 0.005 IN. 12 3	
		SOIL MOISTURE - CORRELATION OF TERMS	
		LL - LIQUID LIMIT PL - PLASTIC LIMIT OM - OPTIMUM MOISTURE SL - SHRINKAGE LIMIT	
		PLASTICITY	
		PLASTICITY INDEX (PI) DRY STRENGTH 0-5 VERY LOW 6-15 SLIGHT 16-25 MEDIUM 26 OR MORE HIGH	
		COLOR	
		DESCRIPTIONS MAY INCLUDE COLOR OR COLOR COMBINATIONS (TAN, RED, YELLOW-BROWN, BLUE-GRAY). MODIFIERS SUCH AS LIGHT, DARK, STREAKED, ETC. ARE USED TO DESCRIBE APPEARANCE.	
		TEXTURE OR GRAIN SIZE	
		U.S. STD. SIEVE SIZE OPENING (MM) 4 10 40 60 200 270 4.75 2.00 0.42 0.25 0.075 0.053 BOULDER (BLDR.) COBBLE (COB.) GRAVEL (GR.) COARSE SAND (CSE. SD.) FINE SAND (F SD.) SILT (SL.) CLAY (CL.) GRAIN SIZE MM 305 75 2.0 0.25 0.05 0.005 IN. 12 3	
		SOIL MOISTURE - CORRELATION OF TERMS	
		LL - LIQUID LIMIT PL - PLASTIC LIMIT OM - OPTIMUM MOISTURE SL - SHRINKAGE LIMIT	
		PLASTICITY	
		PLASTICITY INDEX (PI) DRY STRENGTH 0-5 VERY LOW 6-15 SLIGHT 16-25 MEDIUM 26 OR MORE HIGH	
		COLOR	
		DESCRIPTIONS MAY INCLUDE COLOR OR COLOR COMBINATIONS (TAN, RED, YELLOW-BROWN, BLUE-GRAY). MODIFIERS SUCH AS LIGHT, DARK, STREAKED, ETC. ARE USED TO DESCRIBE APPEARANCE.	
		TEXTURE OR GRAIN SIZE	
		U.S. STD. SIEVE SIZE OPENING (MM) 4 10 40 60 200 270 4.75 2.00 0.42 0.25 0.075 0.053 BOULDER (BLDR.) COBBLE (COB.) GRAVEL (GR.) COARSE SAND (CSE. SD.) FINE SAND (F SD.) SILT (SL.) CLAY (CL.) GRAIN SIZE MM 305 75 2.0 0.25 0.05 0.005 IN. 12 3	
		SOIL MOISTURE - CORRELATION OF TERMS	
		LL - LIQUID LIMIT PL - PLASTIC LIMIT OM - OPTIMUM MOISTURE SL - SHRINKAGE LIMIT	
		PLASTICITY	
		PLASTICITY INDEX (PI) DRY STRENGTH 0-5 VERY LOW 6-15 SLIGHT 16-25 MEDIUM 26 OR MORE HIGH	
		COLOR	
		DESCRIPTIONS MAY INCLUDE COLOR OR COLOR COMBINATIONS (TAN, RED, YELLOW-BROWN, BLUE-GRAY). MODIFIERS SUCH AS LIGHT, DARK, STREAKED, ETC. ARE USED TO DESCRIBE APPEARANCE.	
		TEXTURE OR GRAIN SIZE	
		U.S. STD. SIEVE SIZE OPENING (MM) 4 10 40 60 200 270 4.75 2.00 0.42 0.25 0.075 0.053 BOULDER (BLDR.) COBBLE (COB.) GRAVEL (GR.) COARSE SAND (CSE. SD.) FINE SAND (F SD.) SILT (SL.) CLAY (CL.) GRAIN SIZE MM 305 75 2.0 0.25 0.05 0.005 IN. 12 3	
		SOIL MOISTURE - CORRELATION OF TERMS	
		LL - LIQUID LIMIT PL - PLASTIC LIMIT OM - OPTIMUM MOISTURE SL - SHRINKAGE LIMIT	
		PLASTICITY	
		PLASTICITY INDEX (PI) DRY STRENGTH 0-5 VERY LOW 6-15 SLIGHT 16-25 MEDIUM 26 OR MORE HIGH	
		COLOR	
		DESCRIPTIONS MAY INCLUDE COLOR OR COLOR COMBINATIONS (TAN, RED, YELLOW-BROWN, BLUE-GRAY). MODIFIERS SUCH AS LIGHT, DARK, STREAKED, ETC. ARE USED TO DESCRIBE APPEARANCE.	
		TEXTURE OR GRAIN SIZE	
		U.S. STD. SIEVE SIZE OPENING (MM) 4 10 40 60 200 270 4.75 2.00 0.42 0.25 0.075 0.053 BOULDER (BLDR.) COBBLE (COB.) GRAVEL (GR.) COARSE SAND (CSE. SD.) FINE SAND (F SD.) SILT (SL.) CLAY (CL.) GRAIN SIZE MM 305 75 2.0 0.25 0.05 0.005 IN. 12 3	
		SOIL MOISTURE - CORRELATION OF TERMS	
		LL - LIQUID LIMIT PL - PLASTIC LIMIT OM - OPTIMUM MOISTURE SL - SHRINKAGE LIMIT	
		PLASTICITY	
		PLASTICITY INDEX (PI) DRY STRENGTH 0-5 VERY LOW 6-15 SLIGHT 16-25 MEDIUM 26 OR MORE HIGH	
		COLOR	
		DESCRIPTIONS MAY INCLUDE COLOR OR COLOR COMBINATIONS (TAN, RED, YELLOW-BROWN, BLUE-GRAY). MODIFIERS SUCH AS LIGHT, DARK, STREAKED, ETC. ARE USED TO DESCRIBE APPEARANCE.	
		TEXTURE OR GRAIN SIZE	
		U.S. STD. SIEVE SIZE OPENING (MM) 4 10 40 60 200 270 4.75 2.00 0.42 0.25 0.075 0.053 BOULDER (BLDR.) COBBLE (COB.) GRAVEL (GR.) COARSE SAND (CSE. SD.) FINE SAND (F SD.) SILT (SL.) CLAY (CL.) GRAIN SIZE MM 305 75 2.0 0.25 0.05 0.005 IN. 12 3	
		SOIL MOISTURE - CORRELATION OF TERMS	
		LL - LIQUID LIMIT PL - PLASTIC LIMIT OM - OPTIMUM MOISTURE SL - SHRINKAGE LIMIT	
		PLASTICITY	
		PLASTICITY INDEX (PI) DRY STRENGTH 0-5 VERY LOW 6-15 SLIGHT 16-25 MEDIUM 26 OR MORE HIGH	
		COLOR	
		DESCRIPTIONS MAY INCLUDE COLOR OR COLOR COMBINATIONS (TAN, RED, YELLOW-BROWN, BLUE-GRAY). MODIFIERS SUCH AS LIGHT, DARK, STREAKED, ETC. ARE USED TO DESCRIBE APPEARANCE.	
		TEXTURE OR GRAIN SIZE	
		U.S. STD. SIEVE SIZE OPENING (MM) 4 10 40 60 200 270 4.75 2.00 0.42 0.25 0.075 0.053 BOULDER (BLDR.) COBBLE (COB.) GRAVEL (GR.) COARSE SAND (CSE. SD.) FINE SAND (F SD.) SILT (SL.) CLAY (CL.) GRAIN SIZE MM 305 75 2.0 0.25 0.05 0.005 IN. 12 3	
		SOIL MOISTURE - CORRELATION OF TERMS	
		LL - LIQUID LIMIT PL - PLASTIC LIMIT OM - OPTIMUM MOISTURE SL - SHRINKAGE LIMIT	
		PLASTICITY	
		PLASTICITY INDEX (PI) DRY STRENGTH 0-5 VERY LOW 6-15 SLIGHT 16-25 MEDIUM 26 OR MORE HIGH	
		COLOR	
		DESCRIPTIONS MAY INCLUDE COLOR OR COLOR COMBINATIONS (TAN, RED, YELLOW-BROWN, BLUE-GRAY). MODIFIERS SUCH AS LIGHT, DARK, STREAKED, ETC. ARE USED TO DESCRIBE APPEARANCE.	
		TEXTURE OR GRAIN SIZE	
		U.S. STD. SIEVE SIZE OPENING (MM) 4 10 40 60 200 270 4.75 2.00 0.42 0.25 0.075 0.053 BOULDER (BLDR.) COBBLE (COB.) GRAVEL (GR.) COARSE SAND (CSE. SD.) FINE SAND (F SD.) SILT (SL.) CLAY (CL.) GRAIN SIZE MM 305 75 2.0 0.25 0.05 0.005 IN. 12 3	
		SOIL MOISTURE - CORRELATION OF TERMS	
		LL - LIQUID LIMIT PL - PLASTIC LIMIT OM - OPTIMUM MOISTURE SL - SHRINKAGE LIMIT	

SITE PLAN



SKEW = 90°

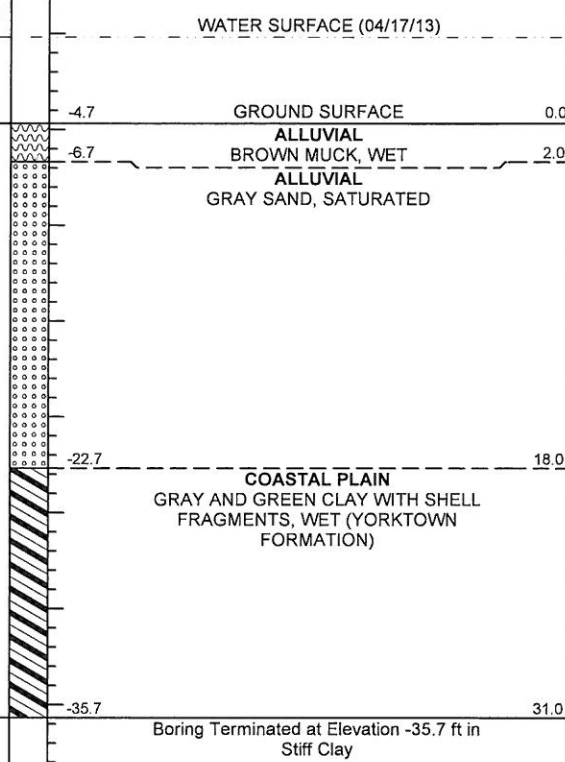




NCDOT GEOTECHNICAL ENGINEERING UNIT
BORELOG REPORT

WBS 17BP.2.R.13	TIP SF-060124	COUNTY BEAUFORT	GEOLOGIST Wrike, C. M.
SITE DESCRIPTION BRIDGE NO. 124 ON -EL- (SR 1718) OVER JACK CREEK			GROUND WTR (ft)
BORING NO. B1	STATION 12+25	OFFSET 9 ft RT	ALIGNMENT -EL-
COLLAR ELEV. -4.7 ft	TOTAL DEPTH 31.0 ft	NORTHING 636,958	EASTING 2,694,024
DRILL RIG/HAMMER EFF./DATE RFO0057 CME-550X 73% 01/22/2013		DRILL METHOD Mud Rotary	HAMMER TYPE Automatic
DRILLER Smith, R. E.	START DATE 04/17/13	COMP. DATE 04/17/13	SURFACE WATER DEPTH 4.5ft

ELEV (ft)	DRIVE ELEV (ft)	DEPTH (ft)	BLOW COUNT			BLOWS PER FOOT					SAMP. NO.	L O G	SOIL AND ROCK DESCRIPTION	DEPTH (ft)	
			0.5ft	0.5ft	0.5ft	0	25	50	75	100					
0															
-5	-4.7	0.0													
	-7.2	2.5	1	1	1										
	-10.4	5.7	2	4	7										
	-12.2	7.5	3	5	7										
	-14.7	10.0	4	6	7										
	-19.2	14.5	4	6	6										
	-24.2	19.5	2	3	4										
	-29.2	24.5	4	6	6										
	-34.2	29.5	5	6	7										



NCDOT BORE DOUBLE SF-060124_GEO_CLVRT.GPJ NC_DOT_GDT 4/24/13

STATE	STATE PROJECT REFERENCE NO.	SHEET NO.	TOTAL SHEETS
N.C.	SF-060241	1	5

STATE OF NORTH CAROLINA
DEPARTMENT OF TRANSPORTATION
DIVISION OF HIGHWAYS
GEOTECHNICAL ENGINEERING UNIT

STRUCTURE SUBSURFACE INVESTIGATION

PROJ. REFERENCE NO. 17BP.2.R.15 (SF-060241) F.A. PROJ. _____
COUNTY BEAUFORT
PROJECT DESCRIPTION CULVERT ON SR 1530 (BASELINE RD.)
OVER FORK SWAMP BRANCH AT -EL- STA. 12+19.50

CONTENTS

SHEET	DESCRIPTION
1	TITLE SHEET
2	LEGEND
3	SITE PLAN
4	PROFILE
5	BORE LOGS

CAUTION NOTICE

THE SUBSURFACE INFORMATION AND THE SUBSURFACE INVESTIGATION ON WHICH IT IS BASED WERE MADE FOR THE PURPOSE OF STUDY, PLANNING, AND DESIGN AND NOT FOR CONSTRUCTION OR PAY PURPOSES. THE VARIOUS FIELD BORING LOGS, ROCK CORES, AND SOIL TEST DATA AVAILABLE MAY BE REVIEWED OR INSPECTED IN RALEIGH BY CONTACTING THE N.C. DEPARTMENT OF TRANSPORTATION, GEOTECHNICAL ENGINEERING UNIT AT (919) 707-5850. NEITHER THE SUBSURFACE PLANS AND REPORTS, NOR THE FIELD BORING LOGS, ROCK CORES, OR SOIL TEST DATA ARE PART OF THE CONTRACT.

GENERAL SOIL AND ROCK STRATA DESCRIPTIONS AND INDICATED BOUNDARIES ARE BASED ON A GEOTECHNICAL INTERPRETATION OF ALL AVAILABLE SUBSURFACE DATA AND MAY NOT NECESSARILY REFLECT THE ACTUAL SUBSURFACE CONDITIONS BETWEEN BORINGS OR BETWEEN SAMPLED STRATA WITHIN THE BOREHOLE. THE LABORATORY SAMPLE DATA AND THE IN SITU (IN-PLACED) TEST DATA CAN BE RELIED ON ONLY TO THE DEGREE OF RELIABILITY INHERENT IN THE STANDARD TEST METHOD. THE OBSERVED WATER LEVELS OR SOIL MOISTURE CONDITIONS INDICATED IN THE SUBSURFACE INVESTIGATIONS ARE AS RECORDED AT THE TIME OF THE INVESTIGATION. THESE WATER LEVELS OR SOIL MOISTURE CONDITIONS MAY VARY CONSIDERABLY WITH TIME ACCORDING TO CLIMATIC CONDITIONS INCLUDING TEMPERATURES, PRECIPITATION, AND WIND, AS WELL AS OTHER NON-CLIMATIC FACTORS.

THE BIDDER OR CONTRACTOR IS CAUTIONED THAT DETAILS SHOWN ON THE SUBSURFACE PLANS ARE PRELIMINARY ONLY AND IN MANY CASES THE FINAL DESIGN DETAILS ARE DIFFERENT. FOR BIDDING AND CONSTRUCTION PURPOSES, REFER TO THE CONSTRUCTION PLANS AND DOCUMENTS FOR FINAL DESIGN INFORMATION ON THIS PROJECT. THE DEPARTMENT DOES NOT WARRANT OR GUARANTEE THE SUFFICIENCY OR ACCURACY OF THE INVESTIGATION MADE, NOR THE INTERPRETATIONS MADE, OR OPINION OF THE DEPARTMENT AS TO THE TYPE OF MATERIALS AND CONDITIONS TO BE ENCOUNTERED. THE BIDDER OR CONTRACTOR IS CAUTIONED TO MAKE SUCH INDEPENDENT SUBSURFACE INVESTIGATIONS AS HE DEEMS NECESSARY TO SATISFY HIMSELF AS TO CONDITIONS TO BE ENCOUNTERED ON THIS PROJECT. THE CONTRACTOR SHALL HAVE NO CLAIM FOR ADDITIONAL COMPENSATION OR FOR AN EXTENSION OF TIME FOR ANY REASON RESULTING FROM THE ACTUAL CONDITIONS ENCOUNTERED AT THE SITE DIFFERING FROM THOSE INDICATED IN THE SUBSURFACE INFORMATION.

PERSONNEL

C.M. WRIKE

R.E. SMITH

D.G. PINTER

INVESTIGATED BY T.C. BOTTOMS

CHECKED BY D.N. ARGENBRIGHT

SUBMITTED BY D.N. ARGENBRIGHT

DATE APRIL 2013



PROJECT: 17BP.2.R.15 ID: SF-060241

DRAWN BY: C.P. TURNER

NOTE - THE INFORMATION CONTAINED HEREIN IS NOT IMPLIED OR GUARANTEED BY THE N.C. DEPARTMENT OF TRANSPORTATION AS BEING ACCURATE NOR IS IT CONSIDERED TO BE PART OF THE PLANS, SPECIFICATIONS, OR CONTRACT FOR THE PROJECT.

NOTE - BY HAVING REQUESTED THIS INFORMATION THE CONTRACTOR SPECIFICALLY WAIVES ANY CLAIMS FOR INCREASED COMPENSATION OR EXTENSION OF TIME BASED ON DIFFERENCES BETWEEN THE CONDITIONS INDICATED HEREIN AND THE ACTUAL CONDITIONS AT THE PROJECT SITE.

NORTH CAROLINA DEPARTMENT OF TRANSPORTATION
DIVISION OF HIGHWAYS
GEOTECHNICAL ENGINEERING UNIT

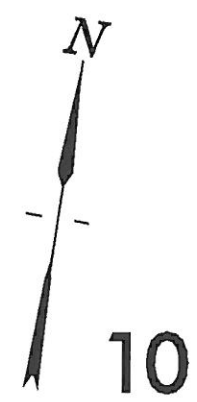
SUBSURFACE INVESTIGATION

SOIL AND ROCK LEGEND, TERMS, SYMBOLS, AND ABBREVIATIONS

SOIL DESCRIPTION	GRADATION	ROCK DESCRIPTION	TERMS AND DEFINITIONS																																																																																																																																							
<p>SOIL IS CONSIDERED TO BE THE UNCONSOLIDATED, SEMI-CONSOLIDATED, OR WEATHERED EARTH MATERIALS THAT CAN BE PENETRATED WITH A CONTINUOUS FLIGHT POWER AUGER, AND YIELD LESS THAN 100 BLOWS PER FOOT ACCORDING TO STANDARD PENETRATION TEST (AASHTO T206, ASTM D-1586). SOIL CLASSIFICATION IS BASED ON THE AASHTO SYSTEM. BASIC DESCRIPTIONS GENERALLY SHALL INCLUDE: CONSISTENCY, COLOR, TEXTURE, MOISTURE, AASHTO CLASSIFICATION, AND OTHER PERTINENT FACTORS SUCH AS MINERALOGICAL COMPOSITION, ANGULARITY, STRUCTURE, PLASTICITY, ETC. EXAMPLE:</p> <p style="text-align: center;"><i>VERY STIFF, SANDY CLAY, MOST WITH INTERBEDDED FINE SAND LAYERS, HIGH PLASTIC, A-7-6</i></p>	<p>WELL GRADED - INDICATES A GOOD REPRESENTATION OF PARTICLE SIZES FROM FINE TO COARSE. UNIFORM - INDICATES THAT SOIL PARTICLES ARE ALL APPROXIMATELY THE SAME SIZE. (ALSO POORLY GRADED) GAP-GRADED - INDICATES A MIXTURE OF UNIFORM PARTICLES OF TWO OR MORE SIZES.</p> <p style="text-align: center;">ANGULARITY OF GRAINS</p> <p>THE ANGULARITY OR ROUNDNESS OF SOIL GRAINS IS DESIGNATED BY THE TERMS: ANGULAR, SUBANGULAR, SUBROUNDED, OR ROUNDED.</p>	<p>HARD ROCK IS NON-COASTAL PLAIN MATERIAL THAT IF TESTED, WOULD YIELD SPT REFUSAL. AN INFERRED ROCK LINE INDICATES THE LEVEL AT WHICH NON-COASTAL PLAIN MATERIAL WOULD YIELD SPT REFUSAL. SPT REFUSAL IS PENETRATION BY A SPLIT SPOON SAMPLER EQUAL TO OR LESS THAN 0.1 FOOT PER 60 BLOWS. IN NON-COASTAL PLAIN MATERIAL, THE TRANSITION BETWEEN SOIL AND ROCK IS OFTEN REPRESENTED BY A ZONE OF WEATHERED ROCK. ROCK MATERIALS ARE TYPICALLY DIVIDED AS FOLLOWS:</p> <p>WEATHERED ROCK (WR) NON-COASTAL PLAIN MATERIAL THAT WOULD YIELD SPT N VALUES > 100 BLOWS PER FOOT IF TESTED.</p> <p>CRYSTALLINE ROCK (CR) FINE TO COARSE GRAIN IGNEOUS AND METAMORPHIC ROCK THAT WOULD YIELD SPT REFUSAL IF TESTED. ROCK TYPE INCLUDES GRANITE, GNEISS, GABBRO, SCHIST, ETC.</p> <p>NON-CRYSTALLINE ROCK (NCR) FINE TO COARSE GRAIN METAMORPHIC AND NON-COASTAL PLAIN SEDIMENTARY ROCK THAT WOULD YIELD SPT REFUSAL IF TESTED. ROCK TYPE INCLUDES PHYLLITE, SLATE, SANDSTONE, ETC.</p> <p>COASTAL PLAIN SEDIMENTARY ROCK (CP) COASTAL PLAIN SEDIMENTS CEMENTED INTO ROCK, BUT MAY NOT YIELD SPT REFUSAL. ROCK TYPE INCLUDES LIMESTONE, SANDSTONE, CEMENTED SHELL BEDS, ETC.</p>	<p>ALLUVIUM (ALLUV.) - SOILS THAT HAVE BEEN TRANSPORTED BY WATER. AQUIFER - A WATER BEARING FORMATION OR STRATA. ARENACEOUS - APPLIED TO ROCKS THAT HAVE BEEN DERIVED FROM SAND OR THAT CONTAIN SAND. ARGILLACEOUS - APPLIED TO ALL ROCKS OR SUBSTANCES COMPOSED OF CLAY MINERALS, OR HAVING A NOTABLE PROPORTION OF CLAY IN THEIR COMPOSITION, AS SHALE, SLATE, ETC. ARTESIAN - GROUND WATER THAT IS UNDER SUFFICIENT PRESSURE TO RISE ABOVE THE LEVEL AT WHICH IT IS ENCOUNTERED, BUT WHICH DOES NOT NECESSARILY RISE TO OR ABOVE THE GROUND SURFACE. CALCAREOUS (CALC.) - SOILS THAT CONTAIN APPRECIABLE AMOUNTS OF CALCIUM CARBONATE. COLLUVIUM - ROCK FRAGMENTS MIXED WITH SOIL DEPOSITED BY GRAVITY ON SLOPE OR AT BOTTOM OF SLOPE. CORE RECOVERY (REC.) - TOTAL LENGTH OF ALL MATERIAL RECOVERED IN THE CORE BARREL DIVIDED BY TOTAL LENGTH OF CORE RUN AND EXPRESSED AS A PERCENTAGE. DIKE - A TABULAR BODY OF IGNEOUS ROCK THAT CUTS ACROSS THE STRUCTURE OF ADJACENT ROCKS OR CUTS MASSIVE ROCK. DIP - THE ANGLE AT WHICH A STRATUM OR ANY PLANAR FEATURE IS INCLINED FROM THE HORIZONTAL. DIP DIRECTION (DIP AZIMUTH) - THE DIRECTION OR BEARING OF THE HORIZONTAL TRACE OF THE LINE OF DIP, MEASURED CLOCKWISE FROM NORTH. FAULT - A FRACTURE OR FRACTURE ZONE ALONG WHICH THERE HAS BEEN DISPLACEMENT OF THE SIDES RELATIVE TO ONE ANOTHER PARALLEL TO THE FRACTURE. FISSILE - A PROPERTY OF SPLITTING ALONG CLOSELY SPACED PARALLEL PLANES. FLOAT - ROCK FRAGMENTS ON SURFACE NEAR THEIR ORIGINAL POSITION AND DISLODGED FROM PARENT MATERIAL. FLOOD PLAIN (FP) - LAND BORDERING A STREAM, BUILT OF SEDIMENTS DEPOSITED BY THE STREAM. FORMATION (FM) - A MAPPABLE GEOLOGIC UNIT THAT CAN BE RECOGNIZED AND TRACED IN THE FIELD. JOINT - FRACTURE IN ROCK ALONG WHICH NO APPRECIABLE MOVEMENT HAS OCCURRED. LEDGE - A SHELF-LIKE RIDGE OR PROJECTION OF ROCK WHOSE THICKNESS IS SMALL COMPARED TO ITS LATERAL EXTENT. LENS - A BODY OF SOIL OR ROCK THAT THINS OUT IN ONE OR MORE DIRECTIONS. MOTTLED (MOT.) - IRREGULARLY MARKED WITH SPOTS OF DIFFERENT COLORS. MOTTLING IN SOILS USUALLY INDICATES POOR AERATION AND LACK OF GOOD DRAINAGE. PERCHED WATER - WATER MAINTAINED ABOVE THE NORMAL GROUND WATER LEVEL BY THE PRESENCE OF AN INTERVENING IMPERVIOUS STRATUM. RESIDUAL (RES.) SOIL - SOIL FORMED IN PLACE BY THE WEATHERING OF ROCK. ROCK QUALITY DESIGNATION (RQD) - A MEASURE OF ROCK QUALITY DESCRIBED BY TOTAL LENGTH OF ROCK SEGMENTS EQUAL TO OR GREATER THAN 4 INCHES DIVIDED BY THE TOTAL LENGTH OF CORE RUN AND EXPRESSED AS A PERCENTAGE. SAPROLITE (SAP.) - RESIDUAL SOIL THAT RETAINS THE RELIC STRUCTURE OR FABRIC OF THE PARENT ROCK. SILL - AN INTRUSIVE BODY OF IGNEOUS ROCK OF APPROXIMATELY UNIFORM THICKNESS AND RELATIVELY THIN COMPARED WITH ITS LATERAL EXTENT, THAT HAS BEEN EMPLACED PARALLEL TO THE BEDDING OR SCHISTOSITY OF THE INTRODUCED ROCKS. SLICKENSIDE - POLISHED AND STRIATED SURFACE THAT RESULTS FROM FRICTION ALONG A FAULT OR SLIP PLANE. STANDARD PENETRATION TEST (PENETRATION RESISTANCE) (SPT) - NUMBER OF BLOWS (IN OR BPF) OF A 140 LB. HAMMER FALLING 30 INCHES REQUIRED TO PRODUCE A PENETRATION OF 1 FOOT INTO SOIL WITH A 2 INCH OUTSIDE DIAMETER SPLIT SPOON SAMPLER. SPT REFUSAL IS PENETRATION EQUAL TO OR LESS THAN 0.1 FOOT PER 60 BLOWS. STRATA CORE RECOVERY (SREC) - TOTAL LENGTH OF STRATA MATERIAL RECOVERED DIVIDED BY TOTAL LENGTH OF STRATUM AND EXPRESSED AS A PERCENTAGE. STRATA ROCK QUALITY DESIGNATION (SRQD) - A MEASURE OF ROCK QUALITY DESCRIBED BY TOTAL LENGTH OF ROCK SEGMENTS WITHIN A STRATUM EQUAL TO OR GREATER THAN 4 INCHES DIVIDED BY THE TOTAL LENGTH OF STRATA AND EXPRESSED AS A PERCENTAGE. TOPSOIL (TS.) - SURFACE SOILS USUALLY CONTAINING ORGANIC MATTER.</p>																																																																																																																																							
<p style="text-align: center;">SOIL LEGEND AND AASHTO CLASSIFICATION</p> <table border="1" style="width: 100%; border-collapse: collapse;"> <thead> <tr> <th rowspan="2">GENERAL CLASS.</th> <th colspan="4">GRANULAR MATERIALS (< 35% PASSING #200)</th> <th colspan="4">SILT-CLAY MATERIALS (> 35% PASSING #200)</th> <th colspan="4">ORGANIC MATERIALS</th> </tr> <tr> <th>A-1</th> <th>A-3</th> <th>A-2</th> <th>A-2-5</th> <th>A-4</th> <th>A-5</th> <th>A-6</th> <th>A-7</th> <th>A-1, A-2</th> <th>A-3</th> <th>A-4, A-5</th> <th>A-6, A-7</th> </tr> </thead> <tbody> <tr> <td>GROUP CLASS.</td> <td>A-1-a</td> <td>A-1-b</td> <td>A-2-4</td> <td>A-2-5</td> <td>A-2-6</td> <td>A-2-7</td> <td>A-3-1</td> <td>A-3-2</td> <td>A-3-3</td> <td>A-3-4</td> <td>A-3-5</td> <td>A-3-6</td> </tr> <tr> <td>SYMBOL</td> <td></td> <td></td> <td></td> <td></td> <td></td> <td></td> <td></td> <td></td> <td></td> <td></td> <td></td> <td></td> </tr> <tr> <td>% PASSING</td> <td>10 40 200</td> <td>10 40 200</td> <td>10 40 200</td> <td>10 40 200</td> <td>10 40 200</td> <td>10 40 200</td> <td>10 40 200</td> <td>10 40 200</td> <td>10 40 200</td> <td>10 40 200</td> <td>10 40 200</td> <td>10 40 200</td> </tr> <tr> <td>LIQUID LIMIT PLASTIC INDEX</td> <td>6 MX</td> <td>NP</td> <td>10 MX 10 MN</td> <td>10 MX 10 MN</td> <td>10 MX 10 MN</td> <td>10 MX 10 MN</td> <td>10 MX 10 MN</td> <td>10 MX 10 MN</td> <td>10 MX 10 MN</td> <td>10 MX 10 MN</td> <td>10 MX 10 MN</td> <td>10 MX 10 MN</td> </tr> <tr> <td>GROUP INDEX</td> <td>0</td> <td>0</td> <td>0</td> <td>0</td> <td>0</td> <td>0</td> <td>0</td> <td>0</td> <td>0</td> <td>0</td> <td>0</td> <td>0</td> </tr> <tr> <td>USUAL TYPES OF MAJOR MATERIALS</td> <td>STONE FRAGS. GRAVEL AND SAND</td> <td>FINE SAND</td> <td>SILTY OR CLAYEY GRAVEL AND SAND</td> <td>SILTY SOILS</td> <td>CLAYEY SOILS</td> <td>CLAYEY SOILS</td> <td>CLAYEY SOILS</td> <td>CLAYEY SOILS</td> <td>CLAYEY SOILS</td> <td>CLAYEY SOILS</td> <td>CLAYEY SOILS</td> <td>CLAYEY SOILS</td> </tr> <tr> <td>GEN. RATING AS A SUBGRADE</td> <td colspan="4">EXCELLENT TO GOOD</td> <td colspan="4">FAIR TO POOR</td> <td>FAIR TO POOR</td> <td>POOR</td> <td>UNSATURABLE</td> <td>UNSATURABLE</td> </tr> </tbody> </table> <p style="text-align: center;">PI OF A-7-5 SUBGROUP IS ≤ LL - 30 ; PI OF A-7-6 SUBGROUP IS ≥ LL - 30</p>	GENERAL CLASS.	GRANULAR MATERIALS (< 35% PASSING #200)				SILT-CLAY MATERIALS (> 35% PASSING #200)				ORGANIC MATERIALS				A-1	A-3	A-2	A-2-5	A-4	A-5	A-6	A-7	A-1, A-2	A-3	A-4, A-5	A-6, A-7	GROUP CLASS.	A-1-a	A-1-b	A-2-4	A-2-5	A-2-6	A-2-7	A-3-1	A-3-2	A-3-3	A-3-4	A-3-5	A-3-6	SYMBOL													% PASSING	10 40 200	10 40 200	10 40 200	10 40 200	10 40 200	10 40 200	10 40 200	10 40 200	10 40 200	10 40 200	10 40 200	10 40 200	LIQUID LIMIT PLASTIC INDEX	6 MX	NP	10 MX 10 MN	10 MX 10 MN	10 MX 10 MN	10 MX 10 MN	10 MX 10 MN	10 MX 10 MN	10 MX 10 MN	10 MX 10 MN	10 MX 10 MN	10 MX 10 MN	GROUP INDEX	0	0	0	0	0	0	0	0	0	0	0	0	USUAL TYPES OF MAJOR MATERIALS	STONE FRAGS. GRAVEL AND SAND	FINE SAND	SILTY OR CLAYEY GRAVEL AND SAND	SILTY SOILS	CLAYEY SOILS	CLAYEY SOILS	CLAYEY SOILS	CLAYEY SOILS	CLAYEY SOILS	CLAYEY SOILS	CLAYEY SOILS	CLAYEY SOILS	GEN. RATING AS A SUBGRADE	EXCELLENT TO GOOD				FAIR TO POOR				FAIR TO POOR	POOR	UNSATURABLE	UNSATURABLE	<p style="text-align: center;">MINERALOGICAL COMPOSITION</p> <p>MINERAL NAMES SUCH AS QUARTZ, FELDSPAR, MICA, TALC, KAOLIN, ETC. ARE USED IN DESCRIPTIONS WHENEVER THEY ARE CONSIDERED OF SIGNIFICANCE.</p> <p style="text-align: center;">COMPRESSIBILITY</p> <p>SLIGHTLY COMPRESSIBLE LIQUID LIMIT LESS THAN 31 MODERATELY COMPRESSIBLE LIQUID LIMIT EQUAL TO 31-50 HIGHLY COMPRESSIBLE LIQUID LIMIT GREATER THAN 50</p> <p style="text-align: center;">PERCENTAGE OF MATERIAL</p> <table border="1" style="width: 100%; border-collapse: collapse;"> <thead> <tr> <th></th> <th>GRANULAR SOILS</th> <th>SILT - CLAY SOILS</th> <th>OTHER MATERIAL</th> </tr> </thead> <tbody> <tr> <td>TRACE OF ORGANIC MATTER</td> <td>2 - 3%</td> <td>3 - 5%</td> <td>TRACE 1 - 10%</td> </tr> <tr> <td>LITTLE ORGANIC MATTER</td> <td>3 - 5%</td> <td>5 - 12%</td> <td>LITTLE 10 - 20%</td> </tr> <tr> <td>MODERATELY ORGANIC</td> <td>5 - 10%</td> <td>12 - 20%</td> <td>SOME 20 - 35%</td> </tr> <tr> <td>HIGHLY ORGANIC</td> <td>>10%</td> <td>>20%</td> <td>HIGHLY 35% AND ABOVE</td> </tr> </tbody> </table> <p style="text-align: center;">GROUND WATER</p> <p> WATER LEVEL IN BORE HOLE IMMEDIATELY AFTER DRILLING</p> <p> STATIC WATER LEVEL AFTER 24 HOURS</p> <p> PERCHED WATER, SATURATED ZONE, OR WATER BEARING STRATA</p> <p> SPRING OR SEEP</p> <p style="text-align: center;">MISCELLANEOUS SYMBOLS</p> <p> ROADWAY EMBANKMENT (RE) WITH SOIL DESCRIPTION</p> <p> SOIL SYMBOL</p> <p> ARTIFICIAL FILL (AF) OTHER THAN ROADWAY EMBANKMENT</p> <p> INFERRED SOIL BOUNDARY</p> <p> INFERRED ROCK LINE</p> <p> ALLUVIAL SOIL BOUNDARY</p> <p> DIP & DIP DIRECTION OF ROCK STRUCTURES</p> <p> TEST BORING W/ CORE</p> <p> AUGER BORING</p> <p> CORE BORING</p> <p> MONITORING WELL</p> <p> PIEZOMETER INSTALLATION</p> <p> SLOPE INDICATOR INSTALLATION</p> <p> CONE PENETROMETER TEST</p> <p> SOUNDING ROD</p>		GRANULAR SOILS	SILT - CLAY SOILS	OTHER MATERIAL	TRACE OF ORGANIC MATTER	2 - 3%	3 - 5%	TRACE 1 - 10%	LITTLE ORGANIC MATTER	3 - 5%	5 - 12%	LITTLE 10 - 20%	MODERATELY ORGANIC	5 - 10%	12 - 20%	SOME 20 - 35%	HIGHLY ORGANIC	>10%	>20%	HIGHLY 35% AND ABOVE	<p style="text-align: center;">WEATHERING</p> <p>FRESH ROCK FRESH, CRYSTALS BRIGHT, FEW JOINTS MAY SHOW SLIGHT STAINING. ROCK RINGS UNDER HAMMER IF CRYSTALLINE.</p> <p>VERY SLIGHT (V SL.) ROCK GENERALLY FRESH, JOINTS STAINED, SOME JOINTS MAY SHOW THIN CLAY COATINGS IF OPEN. CRYSTALS ON A BROKEN SPECIMEN FACE SHINE BRIGHTLY. ROCK RINGS UNDER HAMMER BLOWS IF OF A CRYSTALLINE NATURE.</p> <p>SLIGHT (SL.) ROCK GENERALLY FRESH, JOINTS STAINED AND DISCOLORATION EXTENDS INTO ROCK UP TO 1 INCH. OPEN JOINTS MAY CONTAIN CLAY. IN GRANITOID ROCKS SOME OCCASIONAL FELDSPAR CRYSTALS ARE DULL AND DISCOLORED. CRYSTALLINE ROCKS RING UNDER HAMMER BLOWS.</p> <p>MODERATE (MOD.) SIGNIFICANT PORTIONS OF ROCK SHOW DISCOLORATION AND WEATHERING EFFECTS. IN GRANITOID ROCKS, MOST FELDSPARS ARE DULL AND DISCOLORED. SOME SHOW CLAY. ROCK HAS DULL SOUND UNDER HAMMER BLOWS AND SHOWS SIGNIFICANT LOSS OF STRENGTH AS COMPARED WITH FRESH ROCK.</p> <p>MODERATELY SEVERE (MOD. SEV.) ALL ROCK EXCEPT QUARTZ DISCOLORED OR STAINED. IN GRANITOID ROCKS, ALL FELDSPARS DULL AND DISCOLORED AND A MAJORITY SHOW KALINIZATION. ROCK SHOWS SEVERE LOSS OF STRENGTH AND CAN BE EXCAVATED WITH A GEOLOGIST'S PICK. ROCK GIVES "CLUNK" SOUND WHEN STRUCK. <i>IF TESTED, WOULD YIELD SPT REFUSAL</i></p> <p>SEVERE (SEV.) ALL ROCK EXCEPT QUARTZ DISCOLORED OR STAINED. ROCK FABRIC CLEAR AND EVIDENT BUT REDUCED IN STRENGTH TO STRONG SOIL. IN GRANITOID ROCKS ALL FELDSPARS ARE KALINIZED TO SOME EXTENT. SOME FRAGMENTS OF STRONG ROCK USUALLY REMAIN. <i>IF TESTED, YIELDS SPT N VALUES > 100 BPF</i></p> <p>VERY SEVERE (V SEV.) ALL ROCK EXCEPT QUARTZ DISCOLORED OR STAINED. ROCK FABRIC ELEMENTS ARE DISCERNIBLE BUT THE MASS IS EFFECTIVELY REDUCED TO SOIL STATUS, WITH ONLY FRAGMENTS OF STRONG ROCK REMAINING. SAPROLITE IS AN EXAMPLE OF ROCK WEATHERED TO A DEGREE SUCH THAT ONLY MINOR VESTIGES OF THE ORIGINAL ROCK FABRIC REMAIN. <i>IF TESTED, YIELDS SPT N VALUES < 100 BPF</i></p> <p>COMPLETE ROCK REDUCED TO SOIL. ROCK FABRIC NOT DISCERNIBLE, OR DISCERNIBLE ONLY IN SMALL AND SCATTERED CONCENTRATIONS. QUARTZ MAY BE PRESENT AS DIKES OR STRINGERS. SAPROLITE IS ALSO AN EXAMPLE.</p> <p style="text-align: center;">ROCK HARDNESS</p> <p>VERY HARD CANNOT BE SCRATCHED BY KNIFE OR SHARP PICK. BREAKING OF HAND SPECIMENS REQUIRES SEVERAL HARD BLOWS OF THE GEOLOGIST'S PICK.</p> <p>HARD CAN BE SCRATCHED BY KNIFE OR PICK ONLY WITH DIFFICULTY. HARD HAMMER BLOWS REQUIRED TO DETACH HAND SPECIMEN.</p> <p>MODERATELY HARD CAN BE SCRATCHED BY KNIFE OR PICK. GOUGES OR GROOVES TO 0.25 INCHES DEEP CAN BE EXCAVATED BY HARD BLOW OF A GEOLOGIST'S PICK. HAND SPECIMENS CAN BE DETACHED BY MODERATE BLOWS.</p> <p>MEDIUM HARD CAN BE GROOVED OR GOUGED 0.05 INCHES DEEP BY FIRM PRESSURE OF KNIFE OR PICK POINT. CAN BE EXCAVATED IN SMALL CHIPS TO PEICES 1 INCH MAXIMUM SIZE BY HARD BLOWS OF THE POINT OF A GEOLOGIST'S PICK.</p> <p>SOFT CAN BE GROVED OR GOUGED READILY BY KNIFE OR PICK. CAN BE EXCAVATED IN FRAGMENTS FROM CHIPS TO SEVERAL INCHES IN SIZE BY MODERATE BLOWS OF A PICK POINT. SMALL, THIN PIECES CAN BE BROKEN BY FINGER PRESSURE.</p> <p>VERY SOFT CAN BE CARVED WITH KNIFE. CAN BE EXCAVATED READILY WITH POINT OF PICK. PIECES 1 INCH OR MORE IN THICKNESS CAN BE BROKEN BY FINGER PRESSURE. CAN BE SCRATCHED READILY BY FINGER NAIL.</p>
GENERAL CLASS.		GRANULAR MATERIALS (< 35% PASSING #200)				SILT-CLAY MATERIALS (> 35% PASSING #200)				ORGANIC MATERIALS																																																																																																																																
	A-1	A-3	A-2	A-2-5	A-4	A-5	A-6	A-7	A-1, A-2	A-3	A-4, A-5	A-6, A-7																																																																																																																														
GROUP CLASS.	A-1-a	A-1-b	A-2-4	A-2-5	A-2-6	A-2-7	A-3-1	A-3-2	A-3-3	A-3-4	A-3-5	A-3-6																																																																																																																														
SYMBOL																																																																																																																																										
% PASSING	10 40 200	10 40 200	10 40 200	10 40 200	10 40 200	10 40 200	10 40 200	10 40 200	10 40 200	10 40 200	10 40 200	10 40 200																																																																																																																														
LIQUID LIMIT PLASTIC INDEX	6 MX	NP	10 MX 10 MN	10 MX 10 MN	10 MX 10 MN	10 MX 10 MN	10 MX 10 MN	10 MX 10 MN	10 MX 10 MN	10 MX 10 MN	10 MX 10 MN	10 MX 10 MN																																																																																																																														
GROUP INDEX	0	0	0	0	0	0	0	0	0	0	0	0																																																																																																																														
USUAL TYPES OF MAJOR MATERIALS	STONE FRAGS. GRAVEL AND SAND	FINE SAND	SILTY OR CLAYEY GRAVEL AND SAND	SILTY SOILS	CLAYEY SOILS	CLAYEY SOILS	CLAYEY SOILS	CLAYEY SOILS	CLAYEY SOILS	CLAYEY SOILS	CLAYEY SOILS	CLAYEY SOILS																																																																																																																														
GEN. RATING AS A SUBGRADE	EXCELLENT TO GOOD				FAIR TO POOR				FAIR TO POOR	POOR	UNSATURABLE	UNSATURABLE																																																																																																																														
	GRANULAR SOILS	SILT - CLAY SOILS	OTHER MATERIAL																																																																																																																																							
TRACE OF ORGANIC MATTER	2 - 3%	3 - 5%	TRACE 1 - 10%																																																																																																																																							
LITTLE ORGANIC MATTER	3 - 5%	5 - 12%	LITTLE 10 - 20%																																																																																																																																							
MODERATELY ORGANIC	5 - 10%	12 - 20%	SOME 20 - 35%																																																																																																																																							
HIGHLY ORGANIC	>10%	>20%	HIGHLY 35% AND ABOVE																																																																																																																																							
<p style="text-align: center;">CONSISTENCY OR DENSENESS</p> <table border="1" style="width: 100%; border-collapse: collapse;"> <thead> <tr> <th>PRIMARY SOIL TYPE</th> <th>COMPACTNESS OR CONSISTENCY</th> <th>RANGE OF STANDARD PENETRATION RESISTANCE (N-VALUE)</th> <th>RANGE OF UNCONFINED COMPRESSIVE STRENGTH (TONS/F²)</th> </tr> </thead> <tbody> <tr> <td>GENERALLY GRANULAR MATERIAL (NON-COHESIVE)</td> <td>VERY LOOSE LOOSE MEDIUM DENSE DENSE VERY DENSE</td> <td>< 4 4 TO 10 10 TO 30 30 TO 50 > 50</td> <td>N/A</td> </tr> <tr> <td>GENERALLY SILT-CLAY MATERIAL (COHESIVE)</td> <td>VERY SOFT SOFT MEDIUM STIFF STIFF VERY STIFF HARD</td> <td>< 2 2 TO 4 4 TO 8 8 TO 15 15 TO 30 > 30</td> <td>< 0.25 0.25 TO 0.50 0.5 TO 1.0 1 TO 2 2 TO 4 > 4</td> </tr> </tbody> </table> <p style="text-align: center;">TEXTURE OR GRAIN SIZE</p> <table border="1" style="width: 100%; border-collapse: collapse;"> <thead> <tr> <th>U.S. STD. SIEVE SIZE OPENING (MM)</th> <th>4</th> <th>10</th> <th>40</th> <th>60</th> <th>200</th> <th>270</th> </tr> </thead> <tbody> <tr> <td></td> <td>4.75</td> <td>2.00</td> <td>0.42</td> <td>0.25</td> <td>0.075</td> <td>0.053</td> </tr> </tbody> </table> <table border="1" style="width: 100%; border-collapse: collapse;"> <thead> <tr> <th>BOULDER (BLDR.)</th> <th>COBBLE (COB.)</th> <th>GRAVEL (GR.)</th> <th>COARSE SAND (CSE. SD.)</th> <th>FINE SAND (F. SD.)</th> <th>SILT (SL.)</th> <th>CLAY (CL.)</th> </tr> </thead> <tbody> <tr> <td>GRAIN SIZE MM 305</td> <td>75</td> <td>2.0</td> <td>0.25</td> <td>0.05</td> <td>0.005</td> <td></td> </tr> <tr> <td>SIZE IN. 12</td> <td>3</td> <td></td> <td></td> <td></td> <td></td> <td></td> </tr> </tbody> </table> <p style="text-align: center;">SOIL MOISTURE - CORRELATION OF TERMS</p> <table border="1" style="width: 100%; border-collapse: collapse;"> <thead> <tr> <th>SOIL MOISTURE SCALE (ATTERBERG LIMITS)</th> <th>FIELD MOISTURE DESCRIPTION</th> <th>GUIDE FOR FIELD MOISTURE DESCRIPTION</th> </tr> </thead> <tbody> <tr> <td>LL - LIQUID LIMIT</td> <td>- SATURATED - (SAT.)</td> <td>USUALLY LIQUID; VERY WET, USUALLY FROM BELOW THE GROUND WATER TABLE</td> </tr> <tr> <td>PL - PLASTIC LIMIT</td> <td>- WET - (W)</td> <td>SEMISOLID; REQUIRES DRYING TO ATTAIN OPTIMUM MOISTURE</td> </tr> <tr> <td>OM - OPTIMUM MOISTURE</td> <td>- MOIST - (M)</td> <td>SOLID; AT OR NEAR OPTIMUM MOISTURE</td> </tr> <tr> <td>SL - SHRINKAGE LIMIT</td> <td>- DRY - (D)</td> <td>REQUIRES ADDITIONAL WATER TO ATTAIN OPTIMUM MOISTURE</td> </tr> </tbody> </table> <p style="text-align: center;">PLASTICITY</p> <table border="1" style="width: 100%; border-collapse: collapse;"> <thead> <tr> <th>NONPLASTIC</th> <th>PLASTICITY INDEX (PI)</th> <th>DRY STRENGTH</th> </tr> </thead> <tbody> <tr> <td>LOW PLASTICITY</td> <td>0-5</td> <td>VERY LOW</td> </tr> <tr> <td>MED. PLASTICITY</td> <td>6-15</td> <td>SLIGHT</td> </tr> <tr> <td>HIGH PLASTICITY</td> <td>16-25</td> <td>MEDIUM</td> </tr> <tr> <td></td> <td>26 OR MORE</td> <td>HIGH</td> </tr> </tbody> </table> <p style="text-align: center;">COLOR</p> <p>DESCRIPTIONS MAY INCLUDE COLOR OR COLOR COMBINATIONS (TAN, RED, YELLOW-BROWN, BLUE-GRAY). MODIFIERS SUCH AS LIGHT, DARK, STREAKED, ETC. ARE USED TO DESCRIBE APPEARANCE.</p>	PRIMARY SOIL TYPE	COMPACTNESS OR CONSISTENCY	RANGE OF STANDARD PENETRATION RESISTANCE (N-VALUE)	RANGE OF UNCONFINED COMPRESSIVE STRENGTH (TONS/F ²)	GENERALLY GRANULAR MATERIAL (NON-COHESIVE)	VERY LOOSE LOOSE MEDIUM DENSE DENSE VERY DENSE	< 4 4 TO 10 10 TO 30 30 TO 50 > 50	N/A	GENERALLY SILT-CLAY MATERIAL (COHESIVE)	VERY SOFT SOFT MEDIUM STIFF STIFF VERY STIFF HARD	< 2 2 TO 4 4 TO 8 8 TO 15 15 TO 30 > 30	< 0.25 0.25 TO 0.50 0.5 TO 1.0 1 TO 2 2 TO 4 > 4	U.S. STD. SIEVE SIZE OPENING (MM)	4	10	40	60	200	270		4.75	2.00	0.42	0.25	0.075	0.053	BOULDER (BLDR.)	COBBLE (COB.)	GRAVEL (GR.)	COARSE SAND (CSE. SD.)	FINE SAND (F. SD.)	SILT (SL.)	CLAY (CL.)	GRAIN SIZE MM 305	75	2.0	0.25	0.05	0.005		SIZE IN. 12	3						SOIL MOISTURE SCALE (ATTERBERG LIMITS)	FIELD MOISTURE DESCRIPTION	GUIDE FOR FIELD MOISTURE DESCRIPTION	LL - LIQUID LIMIT	- SATURATED - (SAT.)	USUALLY LIQUID; VERY WET, USUALLY FROM BELOW THE GROUND WATER TABLE	PL - PLASTIC LIMIT	- WET - (W)	SEMISOLID; REQUIRES DRYING TO ATTAIN OPTIMUM MOISTURE	OM - OPTIMUM MOISTURE	- MOIST - (M)	SOLID; AT OR NEAR OPTIMUM MOISTURE	SL - SHRINKAGE LIMIT	- DRY - (D)	REQUIRES ADDITIONAL WATER TO ATTAIN OPTIMUM MOISTURE	NONPLASTIC	PLASTICITY INDEX (PI)	DRY STRENGTH	LOW PLASTICITY	0-5	VERY LOW	MED. PLASTICITY	6-15	SLIGHT	HIGH PLASTICITY	16-25	MEDIUM		26 OR MORE	HIGH																																																													
PRIMARY SOIL TYPE	COMPACTNESS OR CONSISTENCY	RANGE OF STANDARD PENETRATION RESISTANCE (N-VALUE)	RANGE OF UNCONFINED COMPRESSIVE STRENGTH (TONS/F ²)																																																																																																																																							
GENERALLY GRANULAR MATERIAL (NON-COHESIVE)	VERY LOOSE LOOSE MEDIUM DENSE DENSE VERY DENSE	< 4 4 TO 10 10 TO 30 30 TO 50 > 50	N/A																																																																																																																																							
GENERALLY SILT-CLAY MATERIAL (COHESIVE)	VERY SOFT SOFT MEDIUM STIFF STIFF VERY STIFF HARD	< 2 2 TO 4 4 TO 8 8 TO 15 15 TO 30 > 30	< 0.25 0.25 TO 0.50 0.5 TO 1.0 1 TO 2 2 TO 4 > 4																																																																																																																																							
U.S. STD. SIEVE SIZE OPENING (MM)	4	10	40	60	200	270																																																																																																																																				
	4.75	2.00	0.42	0.25	0.075	0.053																																																																																																																																				
BOULDER (BLDR.)	COBBLE (COB.)	GRAVEL (GR.)	COARSE SAND (CSE. SD.)	FINE SAND (F. SD.)	SILT (SL.)	CLAY (CL.)																																																																																																																																				
GRAIN SIZE MM 305	75	2.0	0.25	0.05	0.005																																																																																																																																					
SIZE IN. 12	3																																																																																																																																									
SOIL MOISTURE SCALE (ATTERBERG LIMITS)	FIELD MOISTURE DESCRIPTION	GUIDE FOR FIELD MOISTURE DESCRIPTION																																																																																																																																								
LL - LIQUID LIMIT	- SATURATED - (SAT.)	USUALLY LIQUID; VERY WET, USUALLY FROM BELOW THE GROUND WATER TABLE																																																																																																																																								
PL - PLASTIC LIMIT	- WET - (W)	SEMISOLID; REQUIRES DRYING TO ATTAIN OPTIMUM MOISTURE																																																																																																																																								
OM - OPTIMUM MOISTURE	- MOIST - (M)	SOLID; AT OR NEAR OPTIMUM MOISTURE																																																																																																																																								
SL - SHRINKAGE LIMIT	- DRY - (D)	REQUIRES ADDITIONAL WATER TO ATTAIN OPTIMUM MOISTURE																																																																																																																																								
NONPLASTIC	PLASTICITY INDEX (PI)	DRY STRENGTH																																																																																																																																								
LOW PLASTICITY	0-5	VERY LOW																																																																																																																																								
MED. PLASTICITY	6-15	SLIGHT																																																																																																																																								
HIGH PLASTICITY	16-25	MEDIUM																																																																																																																																								
	26 OR MORE	HIGH																																																																																																																																								
<p style="text-align: center;">EQUIPMENT USED ON SUBJECT PROJECT</p> <table border="1" style="width: 100%; border-collapse: collapse;"> <thead> <tr> <th>DRILL UNITS:</th> <th>ADVANCING TOOLS:</th> <th>HAMMER TYPE:</th> </tr> </thead> <tbody> <tr> <td><input type="checkbox"/> MOBILE B-</td> <td><input type="checkbox"/> CLAY BITS</td> <td><input checked="" type="checkbox"/> AUTOMATIC <input type="checkbox"/> MANUAL</td> </tr> <tr> <td><input type="checkbox"/> BK-51</td> <td><input type="checkbox"/> 6" CONTINUOUS FLIGHT AUGER</td> <td><input type="checkbox"/> CORE SIZE:</td> </tr> <tr> <td><input type="checkbox"/> CME-45C</td> <td><input type="checkbox"/> 8" HOLLOW AUGERS</td> <td><input type="checkbox"/> -B</td> </tr> <tr> <td><input type="checkbox"/> CME-550</td> <td><input type="checkbox"/> HARD FACED FINGER BITS</td> <td><input type="checkbox"/> -N</td> </tr> <tr> <td><input type="checkbox"/> PORTABLE HOIST</td> <td><input type="checkbox"/> TUNG-CARBIDE INSERTS</td> <td><input type="checkbox"/> -H</td> </tr> <tr> <td></td> <td><input checked="" type="checkbox"/> CASING <input type="checkbox"/> W/ ADVANCER</td> <td><input type="checkbox"/> HAND TOOLS:</td> </tr> <tr> <td></td> <td><input checked="" type="checkbox"/> TRICONE 2 1/16" STEEL TEETH</td> <td><input type="checkbox"/> POST HOLE DIGGER</td> </tr> <tr> <td></td> <td><input type="checkbox"/> TRICONE " TUNG-CARB.</td> <td><input type="checkbox"/> HAND AUGER</td> </tr> <tr> <td></td> <td><input type="checkbox"/> CORE BIT</td> <td><input type="checkbox"/> SOUNDING ROD</td> </tr> <tr> <td></td> <td></td> <td><input type="checkbox"/> VANE SHEAR TEST</td> </tr> </tbody> </table>	DRILL UNITS:	ADVANCING TOOLS:	HAMMER TYPE:	<input type="checkbox"/> MOBILE B-	<input type="checkbox"/> CLAY BITS	<input checked="" type="checkbox"/> AUTOMATIC <input type="checkbox"/> MANUAL	<input type="checkbox"/> BK-51	<input type="checkbox"/> 6" CONTINUOUS FLIGHT AUGER	<input type="checkbox"/> CORE SIZE:	<input type="checkbox"/> CME-45C	<input type="checkbox"/> 8" HOLLOW AUGERS	<input type="checkbox"/> -B	<input type="checkbox"/> CME-550	<input type="checkbox"/> HARD FACED FINGER BITS	<input type="checkbox"/> -N	<input type="checkbox"/> PORTABLE HOIST	<input type="checkbox"/> TUNG-CARBIDE INSERTS	<input type="checkbox"/> -H		<input checked="" type="checkbox"/> CASING <input type="checkbox"/> W/ ADVANCER	<input type="checkbox"/> HAND TOOLS:		<input checked="" type="checkbox"/> TRICONE 2 1/16" STEEL TEETH	<input type="checkbox"/> POST HOLE DIGGER		<input type="checkbox"/> TRICONE " TUNG-CARB.	<input type="checkbox"/> HAND AUGER		<input type="checkbox"/> CORE BIT	<input type="checkbox"/> SOUNDING ROD			<input type="checkbox"/> VANE SHEAR TEST	<p style="text-align: center;">FRACTURE SPACING</p> <table border="1" style="width: 100%; border-collapse: collapse;"> <thead> <tr> <th>TERM</th> <th>SPACING</th> </tr> </thead> <tbody> <tr> <td>VERY WIDE</td> <td>MORE THAN 10 FEET</td> </tr> <tr> <td>WIDE</td> <td>3 TO 10 FEET</td> </tr> <tr> <td>MODERATELY CLOSE</td> <td>1 TO 3 FEET</td> </tr> <tr> <td>CLOSE</td> <td>0.16 TO 1 FEET</td> </tr> <tr> <td>VERY CLOSE</td> <td>LESS THAN 0.16 FEET</td> </tr> </tbody> </table> <p style="text-align: center;">BEDDING</p> <table border="1" style="width: 100%; border-collapse: collapse;"> <thead> <tr> <th>TERM</th> <th>THICKNESS</th> </tr> </thead> <tbody> <tr> <td>VERY THICKLY BEDDED</td> <td>> 4 FEET</td> </tr> <tr> <td>THICKLY BEDDED</td> <td>1.5 - 4 FEET</td> </tr> <tr> <td>THINLY BEDDED</td> <td>0.16 - 1.5 FEET</td> </tr> <tr> <td>VERY THINLY BEDDED</td> <td>0.03 - 0.16 FEET</td> </tr> <tr> <td>THICKLY LAMINATED</td> <td>0.008 - 0.03 FEET</td> </tr> <tr> <td>THINLY LAMINATED</td> <td>< 0.008 FEET</td> </tr> </tbody> </table> <p style="text-align: center;">INDURATION</p> <p>FOR SEDIMENTARY ROCKS, INDURATION IS THE HARDENING OF THE MATERIAL BY CEMENTING, HEAT, PRESSURE, ETC.</p> <p>FRIABLE RUBBING WITH FINGER FREES NUMEROUS GRAINS; GENTLE BLOW BY HAMMER DISINTEGRATES SAMPLE.</p> <p>MODERATELY INDURATED GRAINS CAN BE SEPARATED FROM SAMPLE WITH STEEL PROBE; BREAKS EASILY WHEN HIT WITH HAMMER.</p> <p>INDURATED GRAINS ARE DIFFICULT TO SEPARATE WITH STEEL PROBE; DIFFICULT TO BREAK WITH HAMMER.</p> <p>EXTREMELY INDURATED SHARP HAMMER BLOWS REQUIRED TO BREAK SAMPLE; SAMPLE BREAKS ACROSS GRAINS.</p>	TERM	SPACING	VERY WIDE	MORE THAN 10 FEET	WIDE	3 TO 10 FEET	MODERATELY CLOSE	1 TO 3 FEET	CLOSE	0.16 TO 1 FEET	VERY CLOSE	LESS THAN 0.16 FEET	TERM	THICKNESS	VERY THICKLY BEDDED	> 4 FEET	THICKLY BEDDED	1.5 - 4 FEET	THINLY BEDDED	0.16 - 1.5 FEET	VERY THINLY BEDDED	0.03 - 0.16 FEET	THICKLY LAMINATED	0.008 - 0.03 FEET	THINLY LAMINATED	< 0.008 FEET																																																																														
DRILL UNITS:	ADVANCING TOOLS:	HAMMER TYPE:																																																																																																																																								
<input type="checkbox"/> MOBILE B-	<input type="checkbox"/> CLAY BITS	<input checked="" type="checkbox"/> AUTOMATIC <input type="checkbox"/> MANUAL																																																																																																																																								
<input type="checkbox"/> BK-51	<input type="checkbox"/> 6" CONTINUOUS FLIGHT AUGER	<input type="checkbox"/> CORE SIZE:																																																																																																																																								
<input type="checkbox"/> CME-45C	<input type="checkbox"/> 8" HOLLOW AUGERS	<input type="checkbox"/> -B																																																																																																																																								
<input type="checkbox"/> CME-550	<input type="checkbox"/> HARD FACED FINGER BITS	<input type="checkbox"/> -N																																																																																																																																								
<input type="checkbox"/> PORTABLE HOIST	<input type="checkbox"/> TUNG-CARBIDE INSERTS	<input type="checkbox"/> -H																																																																																																																																								
	<input checked="" type="checkbox"/> CASING <input type="checkbox"/> W/ ADVANCER	<input type="checkbox"/> HAND TOOLS:																																																																																																																																								
	<input checked="" type="checkbox"/> TRICONE 2 1/16" STEEL TEETH	<input type="checkbox"/> POST HOLE DIGGER																																																																																																																																								
	<input type="checkbox"/> TRICONE " TUNG-CARB.	<input type="checkbox"/> HAND AUGER																																																																																																																																								
	<input type="checkbox"/> CORE BIT	<input type="checkbox"/> SOUNDING ROD																																																																																																																																								
		<input type="checkbox"/> VANE SHEAR TEST																																																																																																																																								
TERM	SPACING																																																																																																																																									
VERY WIDE	MORE THAN 10 FEET																																																																																																																																									
WIDE	3 TO 10 FEET																																																																																																																																									
MODERATELY CLOSE	1 TO 3 FEET																																																																																																																																									
CLOSE	0.16 TO 1 FEET																																																																																																																																									
VERY CLOSE	LESS THAN 0.16 FEET																																																																																																																																									
TERM	THICKNESS																																																																																																																																									
VERY THICKLY BEDDED	> 4 FEET																																																																																																																																									
THICKLY BEDDED	1.5 - 4 FEET																																																																																																																																									
THINLY BEDDED	0.16 - 1.5 FEET																																																																																																																																									
VERY THINLY BEDDED	0.03 - 0.16 FEET																																																																																																																																									
THICKLY LAMINATED	0.008 - 0.03 FEET																																																																																																																																									
THINLY LAMINATED	< 0.008 FEET																																																																																																																																									
<p style="text-align: center;">BENCH MARK: BM-1: RAILROAD SPIKE IN POWER POLE AT N 684582.57, E 2630573.38</p> <p style="text-align: right;">ELEVATION: 38.86 FT.</p>			<p>NOTES:</p>																																																																																																																																							

PROJECT REFERENCE NO.	SHEET
SF-060241	3 OF 5
SITE PLAN	
FEET	

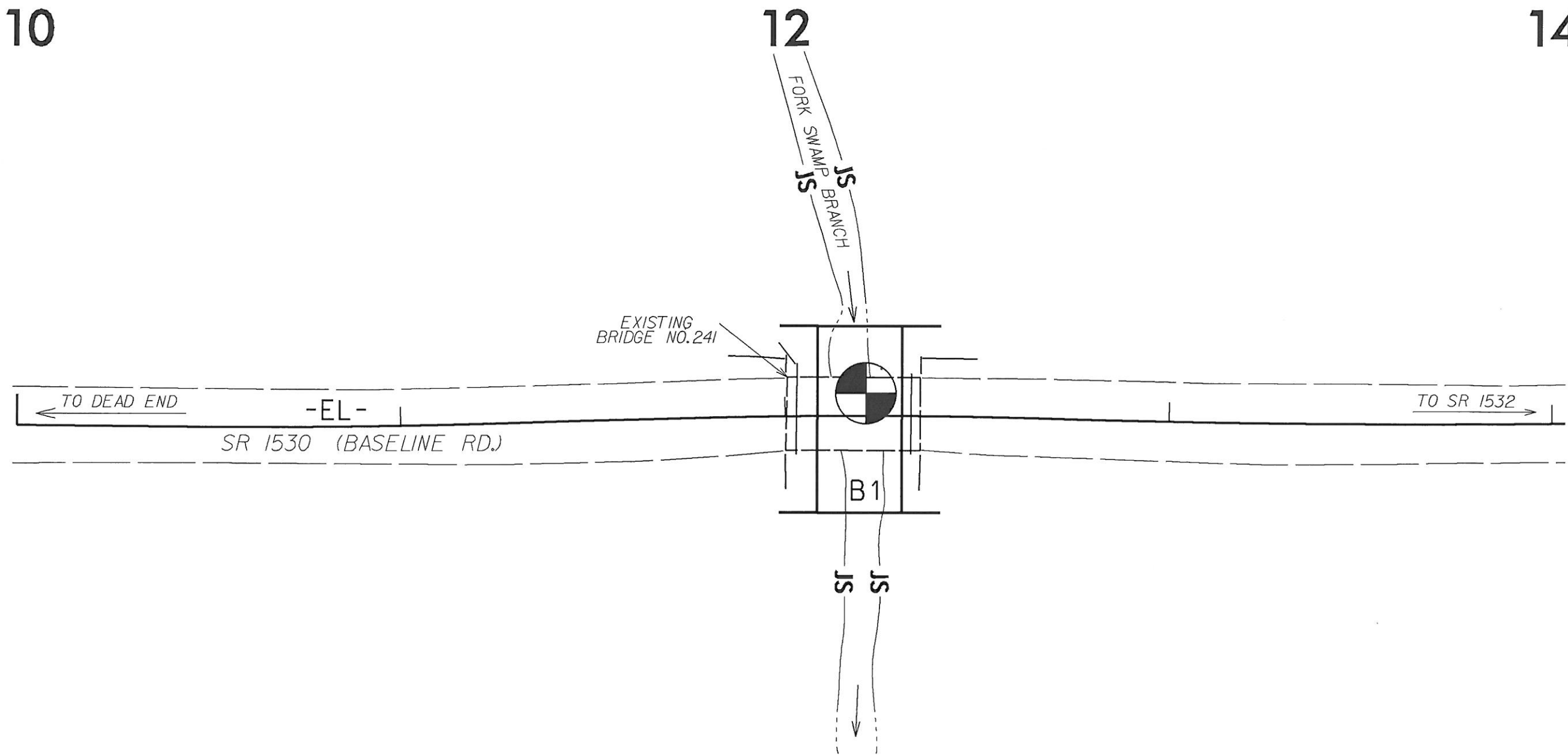
SKEW = 90°



10

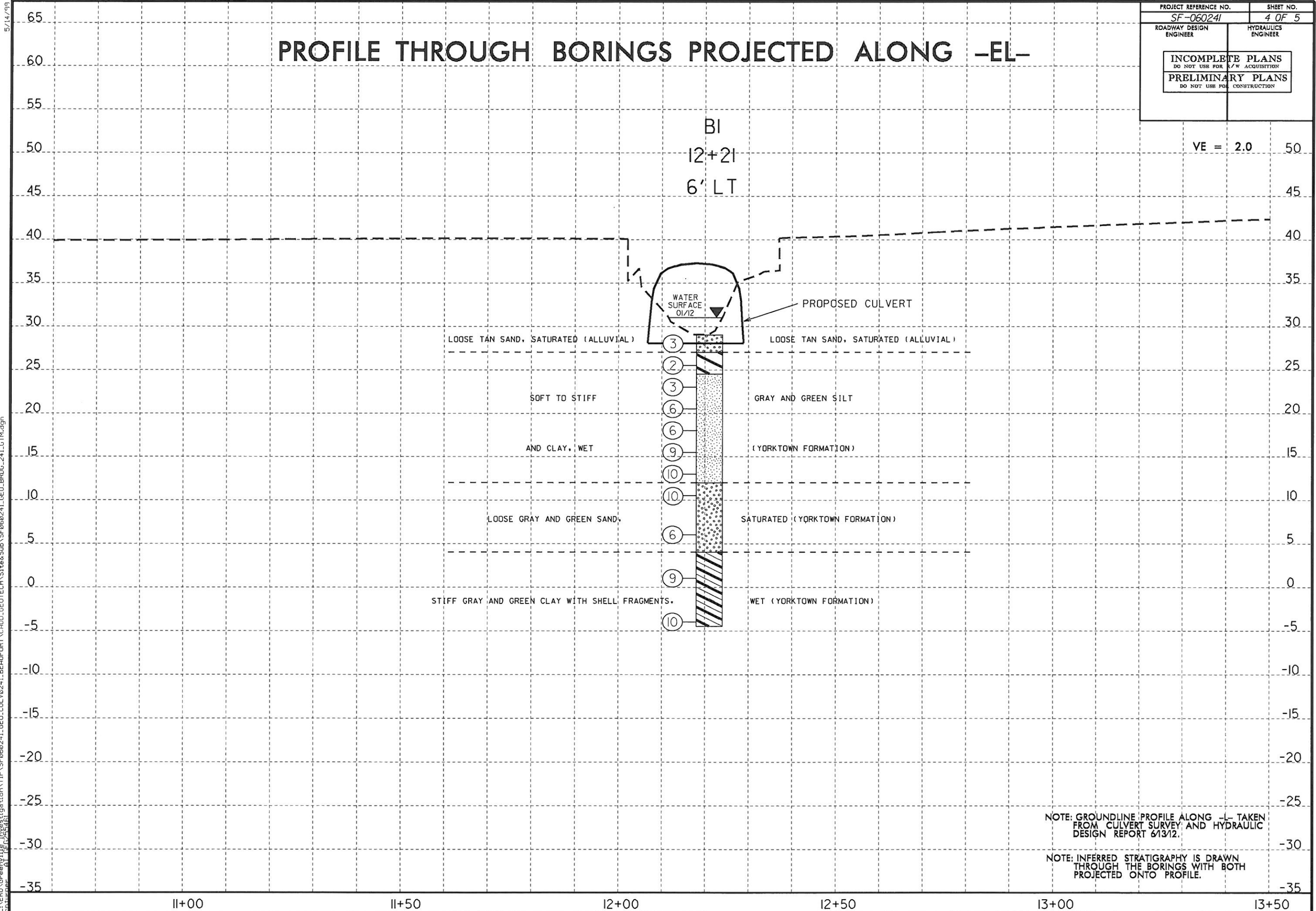
12

14



PROJECT REFERENCE NO. SF-060241	SHEET NO. 4 OF 5
ROADWAY DESIGN ENGINEER	HYDRAULICS ENGINEER
INCOMPLETE PLANS DO NOT USE FOR ACQUISITION PRELIMINARY PLANS DO NOT USE FOR CONSTRUCTION	

PROFILE THROUGH BORINGS PROJECTED ALONG -EL-



29-APR-2013 10:50
 L:\ERD\Greenville\Investigation\TIP\SF060241.GEO_CUL_V0241.BEAUFORT\CAOD_GEO\TECH\Site&Sub\SF060241.GEO_BROG_241.LGT.M.dgn

WBS 17BP.2.R.15	TIP SF-060241	COUNTY BEAUFORT	GEOLOGIST Wrike, C. M.
SITE DESCRIPTION BRIDGE NO 241 ON -EL- (SR 1530) OVER FORK SWAMP BRANCH			GROUND WTR (ft)
BORING NO. B1	STATION 12+21	OFFSET 6 ft LT	ALIGNMENT -EL-
COLLAR ELEV. 29.0 ft	TOTAL DEPTH 33.5 ft	NORTHING 684,631	EASTING 2,630,838
DRILL RIG/HAMMER EFF./DATE RFO0057 CME-550X 73% 01/22/2013		DRILL METHOD Mud Rotary	HAMMER TYPE Automatic
DRILLER Smith, R. E.	START DATE 04/18/13	COMP. DATE 04/18/13	SURFACE WATER DEPTH 0.4ft

ELEV (ft)	DRIVE ELEV (ft)	DEPTH (ft)	BLOW COUNT			BLOWS PER FOOT					SAMP. NO.	LOG	SOIL AND ROCK DESCRIPTION	DEPTH (ft)
			0.5ft	0.5ft	0.5ft	0	25	50	75	100				
30	29.0	0.0											WATER SURFACE (04/18/13)	0.0
	26.5	2.5	WOH	2	1								ALLUVIAL TAN SAND, SATURATED	2.0
25	24.0	5.0		1	1								COASTAL PLAIN GRAY AND GREEN CLAY, WET (YORKTOWN FORMATION)	4.5
	21.5	7.5		1	2								COASTAL PLAIN GRAY AND GREEN SILT, WET (YORKTOWN FORMATION)	
20	19.0	10.0		2	2									
	16.5	12.5		3	4									
15	14.0	15.0		4	5									
	11.5	17.5		2	5								COASTAL PLAIN GRAY AND GREEN SAND, SATURATED (YORKTOWN FORMATION)	17.0
10	7.0	22.0		4	3									
5	2.0	27.0		2	4								COASTAL PLAIN GRAY AND GREEN CLAY WITH SHELL FRAGMENTS, WET (YORKTOWN FORMATION)	25.0
0	-3.0	32.0		3	5									
													Boring Terminated at Elevation -4.5 ft in Stiff Clay	33.5

NCDOT BORE DOUBLE SF-060241_GEO_CLVRT.GPJ NC_DOT.GDT 4/24/13