



STATE OF NORTH CAROLINA
DEPARTMENT OF TRANSPORTATION

ROY COOPER
GOVERNOR

JAMES H. TROGDON, III
SECRETARY

May 25, 2018

CONTRACT: DB00381
WBS ELEMENT: 2018CPT.02.23.20741
COUNTY: Pitt
ROUTE: SR 1598 (10th Street)
DESCRIPTION: Milling, Resurfacing, Pavement Markings, and Pavement Markers
on SR 1589 (10th Street) in Pitt County

ADDENDUM 2

TO: PROSPECTIVE BIDDERS

Please note the following revisions to the plans and proposal.

- Revision of the asphalt pavement thickness of the S9.5B mix on plan sheet 2 and 3. Please note the following changes:
- Plan Sheet #2 – C1 Asphalt Depth Changed from 2” to 1 ½”. The rate changed from 220 LBS to 165 LBS
- Plan Sheet #2 – V2 Milling Depth Changed from 3” to 2 ½”.
- Plan Sheet #3 – The Milling Depth changed from 3” to 2 ½”.
- Plan Sheet #3 – The Surface Course S 9.5B quantity changed from 11,000 Tons to 8,250 Tons
- Plan Sheet #3 – The Asphalt Binder Plant Mix quantity changed from 660 Tons to 555 Tons
- Revised proposal pages with updated contract items.
- A revised electronic file has been uploaded to bid express named DB00381.002.

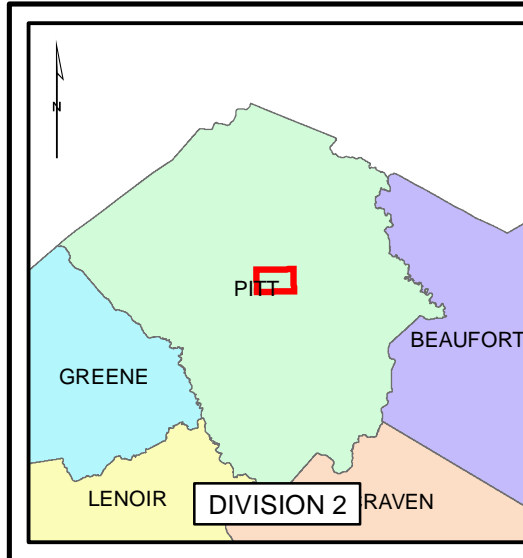
Please make sure to sign the addendum page in the proposal to acknowledge this addendum.

Sincerely,

DocuSigned by:
Mary Voelker Moore
714C11DCCEBC4C6...

Mary Voelker Moore, PE
Division Contract Engineer

cc: Mr. Jeremy Stroud, PE
Mr. Jordan Davenport, PE
Ms. Sarah F. Lentine, PE
Mr. Jeff Cabanis, PE
Ms. Claudia Wainwright



PITT COUNTY

DB00381

WBS# 2018CPT.02.23.20741

REVISED 5/24/18

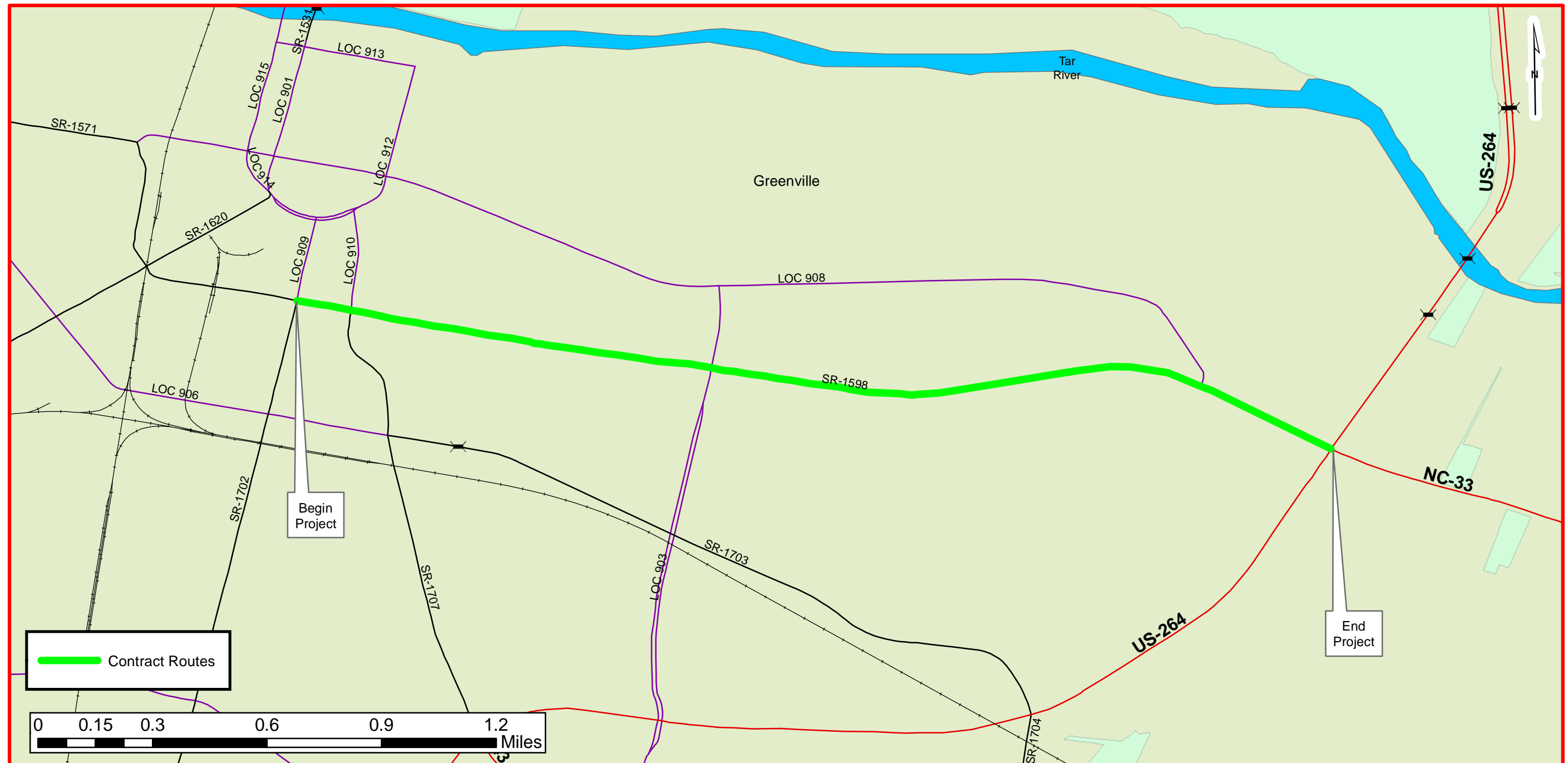
PROJECT REFERENCE NO.	SHEET NO.
DB00381	1

LOCATION:
MAP 01 - SR 1598 (10TH STREET) FROM SR 1702 (EVANS STREET) TO US 264 ALT (GREENVILLE BLVD)

TYPE OF WORK: MILLING, RESURFACING, PAVEMENT MARKINGS, PAVEMENT MARKERS



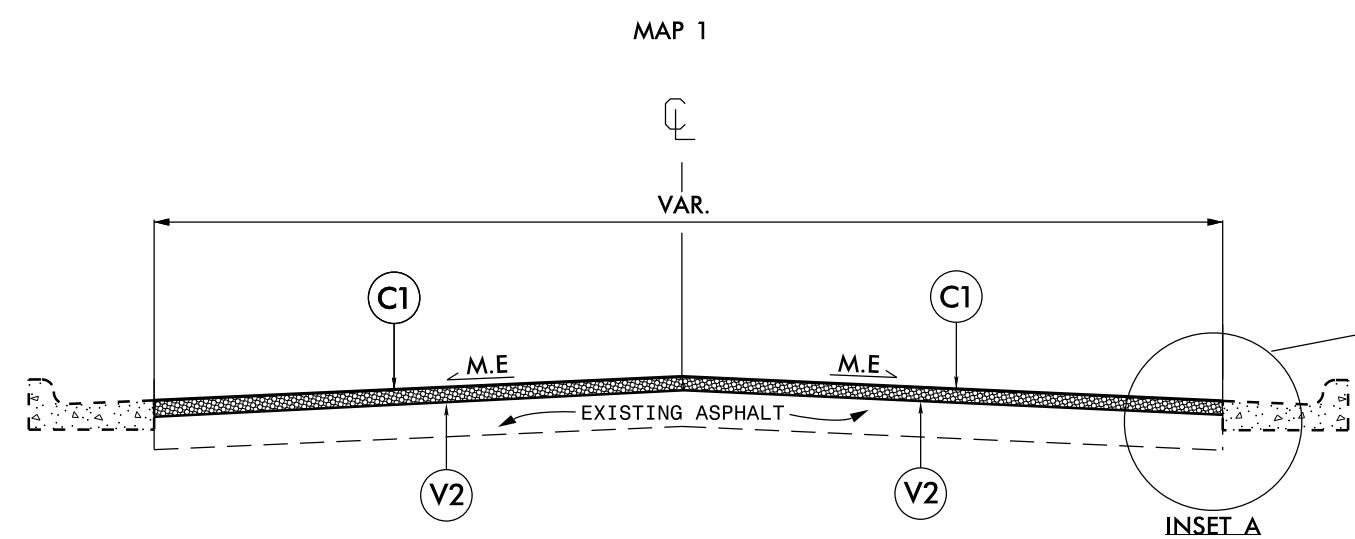
NCDOT
DIVISION 2



PAVEMENT SCHEDULE	
C1	PROP. APPROX. 1½" ASPHALT CONCRETE SURFACE COURSE, TYPE S9.5B, AT AN AVERAGE RATE OF 165.0 LBS. PER SQ. YD.
V1	INCIDENTAL MILLING.
V2	2½" DEPTH MILLING FOR THE ENTIRE WIDTH OF ROADWAY
DRAWINGS NOT TO SCALE	

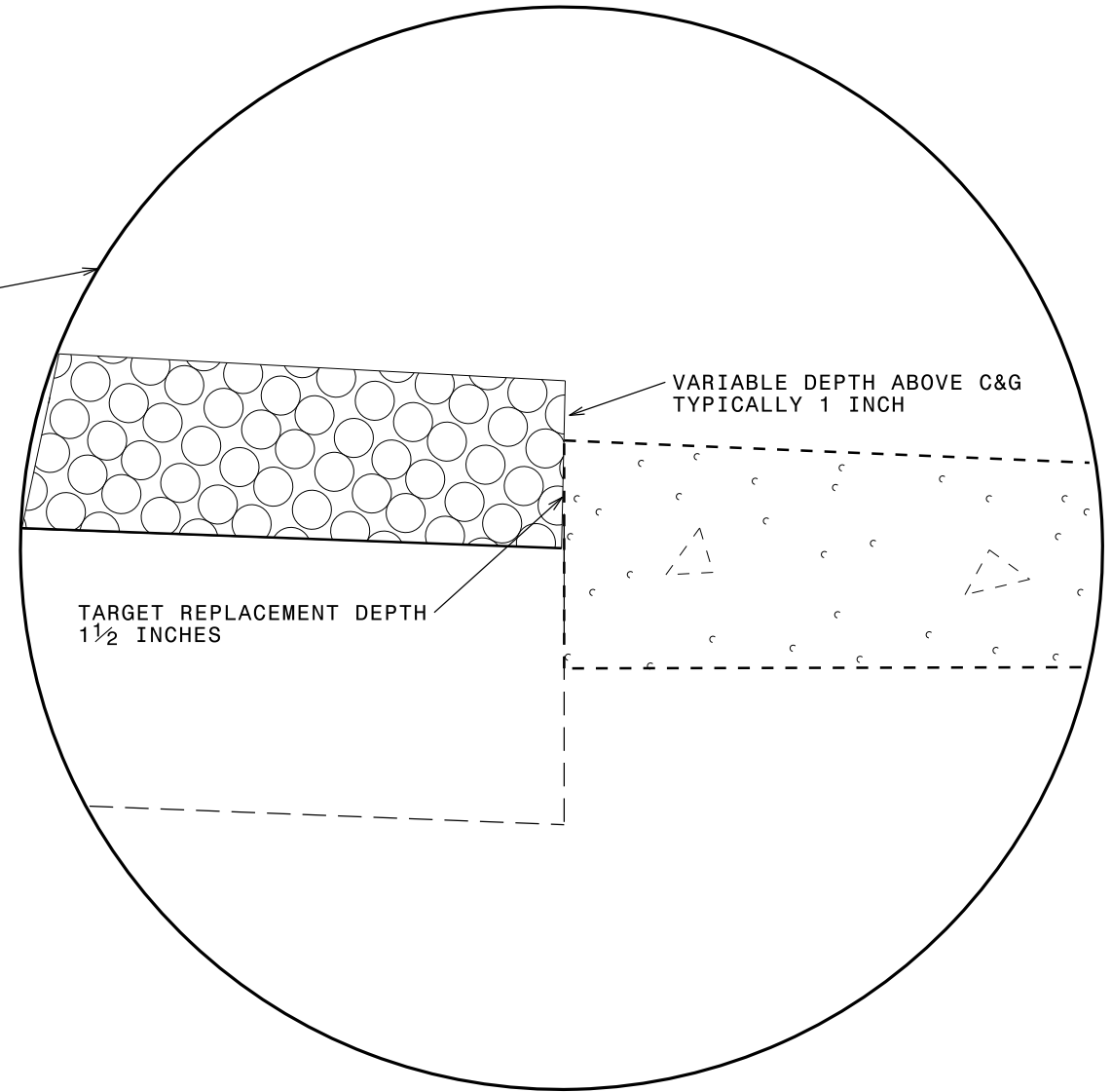
NOTE: PAVEMENT EDGE SLOPES ARE 1:1 UNLESS SHOWN OTHERWISE.

TYPICAL SECTION NO. 1



- NOTE:**
1. MILL FULL WIDTH OF THE ENTIRE ROADWAY.
 2. PLACE ASPHALT SURFACE COURSE AT FULL WIDTH OF EXISTING ASPHALT PAVEMENT, AS DIRECTED BY THE ENGINEER.
 3. INCLUDES INCIDENTAL MILLING AT THE ENDS OF MAIN LINE AND Y-LINE SECTIONS, AS DIRECTED BY THE ENGINEER.
 4. REPAIR VALLEY GUTTER AND CURB AND GUTTER AT LOCATIONS SHOWN ON PAGE 3.

INSET A

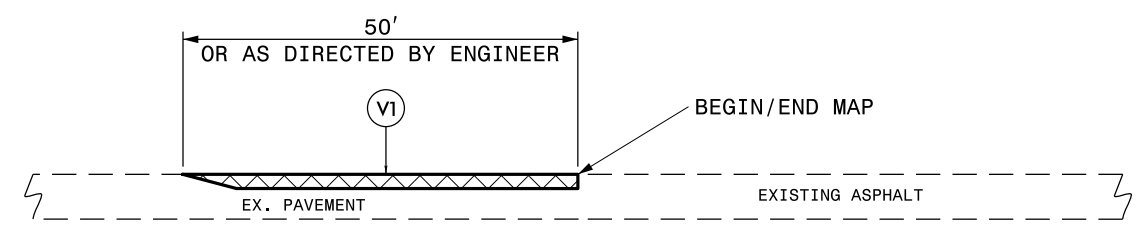


PROJECT NO.	SHEET NO.	TOTAL NO.
DB00381	4	

THERMOPLASTIC AND PAINT QUANTITIES

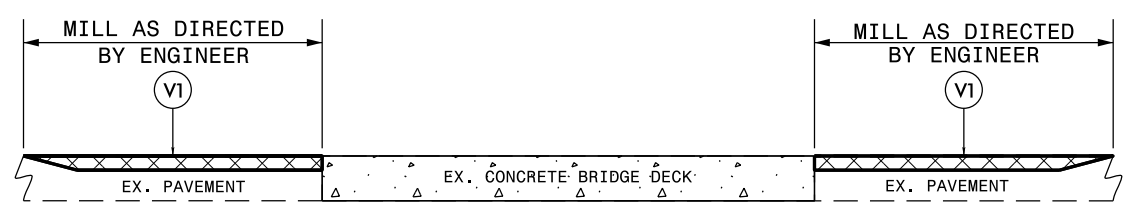
PROJECT NO	COUNTY	MAP NO	ROUTE	DESCRIPTION	TYP NO	LANES	LANE TYPE	LENGTH	WIDTH	4413000000-E	4457000000-N	4690000000-E		4702000000-E	4710000000-E	4721000000-E	4725000000-E					4905000000-N
										WORK ZONE ADVANCE/GE NERAL WARNING SIGNING	TEMPORARY TRAFFIC CONTROL	6" X 120 M WHITE THERMO	6" X 120 M YELLOW THERMO	12" X 120 M WHITE THERMO	24" X 120 M WHITE THERMO	THERMO XING 120(MILS)	THERMO LT ARROW 90 M	THERMO STR ARROW 90 M	THERMO RT ARROW 90 M	THERMO STR & RT ARROW 90 M	THERMO STR & LT ARROW 90 M	SNOW PLOWABLE MARKERS
										SF	LS	LF	LF	LF	LF	EA	EA	EA	EA	EA	EA	EA
2018CPT.02.23.20741	Pitt	1	SR 1598	FROM SR 1702 TO US 264 ALT.	1	5	MU	2.29	60	130	1	8,500	30,500	1,200	2,100	4	90	40	10	15	1	750
TOTAL FOR MAP NO. 1								2.29		130	1	8,500	30,500	1,200	2,100	4	90	40	10	15	1	750
TOTAL FOR PROJ NO. 2018CPT.02.23.20741								2.29		130	1	8,500	30,500	1,200	2,100	4	90	40	10	15	1	750
										39,000												156
GRAND TOTAL								2.29		130	1	8,500	30,500	1,200	2,100	4	90	40	10	15	1	750
										39,000												156

MILLING TYPICALS



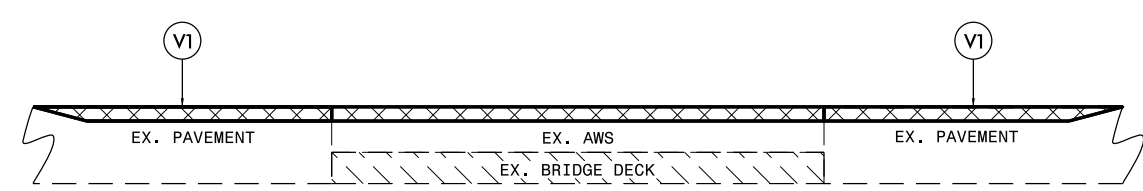
DETAIL 1
BEGIN/END MAP TIE-IN

NOTE:
1. MILLING SHALL BE PERFORMED AT MAIN LINE TIE-INS AND Y-LINE TIE-INS AS DIRECTED BY THE ENGINEER, IN ACCORDANCE WITH THIS DETAIL.



DETAIL 2
BRIDGE MILLING

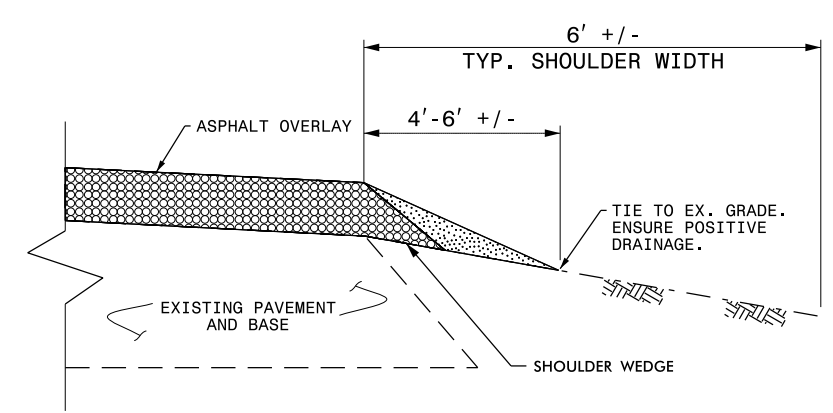
NOTE:
1. MILLING SHALL BE PERFORMED AT THE BRIDGE APPROACHES AS DIRECTED BY THE ENGINEER, IN ACCORDANCE WITH THIS DETAIL.



DETAIL 3
BRIDGE MILLING

NOTE:
1. INCLUDES MILLING FOR THE ENTIRE WIDTH OF THE BRIDGE WEARING SURFACE, AS DIRECTED BY THE ENGINEER.

SHOULDER RECONSTRUCTION TYPICAL

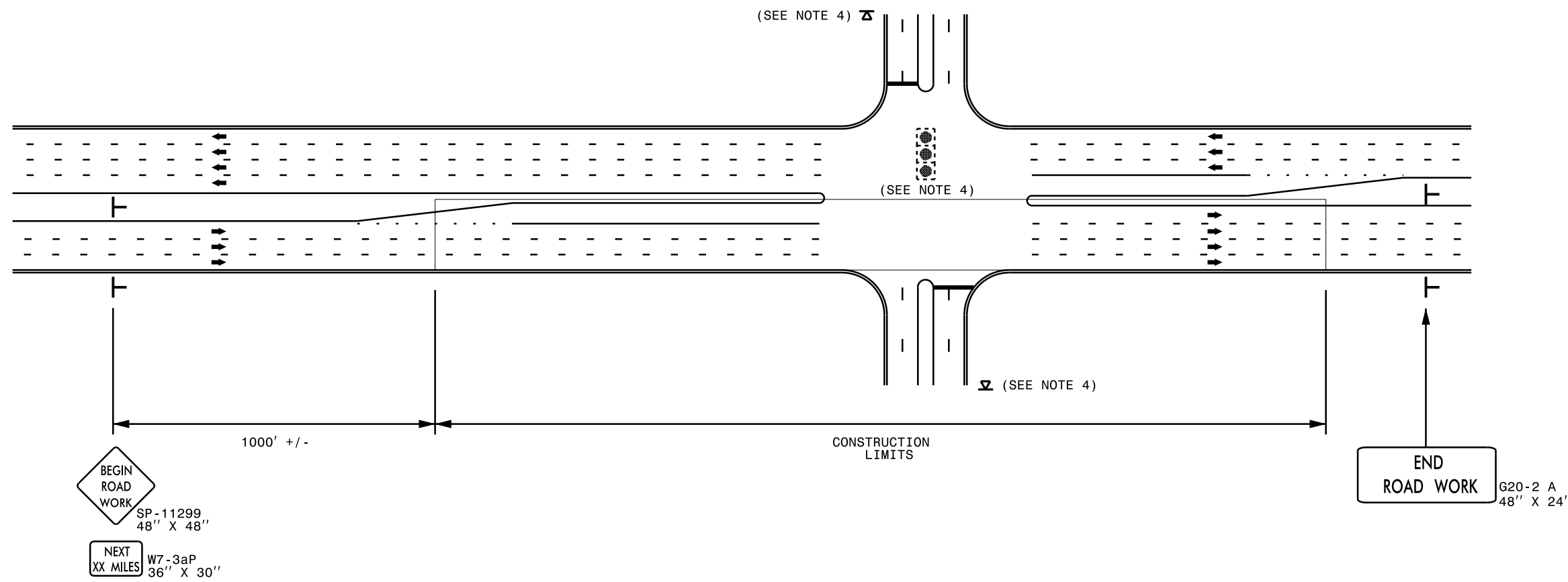


SHOULDER RECONSTRUCTION DETAIL

NOTE:

1. SHOULDERS SHALL BE RECONSTRUCTED AS SHOWN IN STD. DWG. NO. 560.01 & 560.02, WITH A MINIMUM SLOPE OF 1" PER FOOT TO ENSURE POSITIVE DRAINAGE AWAY FROM THE ROADWAY.
2. A VEGETATIVE BUFFER SHALL BE MAINTAINED BETWEEN THE DISTURBED AREA ALONG THE EDGE OF PAVEMENT AND THE DITCH SHOULDER POINT TO MINIMIZE EROSION. PULLING DITCHES OR CUTTING SHOULDERS TO GENERATE BORROW MATERIAL WILL NOT BE ALLOWED.
3. REQUIRED BORROW MATERIAL MAY BE OBTAINED FROM NCDOT STOCKPILES. ANY EXCESS MATERIAL SHALL BE DISPOSED OF BY THE CONTRACTOR IN AN APPROVED DISPOSAL SITE.

URBAN / SUBURBAN WORKZONES

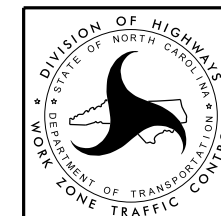


NOTES:

- 1) 48" x 48" SIZED SIGNS (SP- 11299) MAY BE REDUCED TO 36" X 36" ON ROADWAYS WITH SPEED LIMITS OF 40 MPH OR LESS.
- 2) MOUNT SIGNS THAT ARE LARGER THAN 10 SQUARE FEET IN AREA ON TWO OR MORE WOOD OR U-CHANNEL SUPPORTS. PERFORATED SQUARE TUBING SUPPORT SYSTEMS MAY SUPPORT LARGER AREAS ON A SINGLE SUPPORT. FOLLOW MANUFACTURER'S RECOMMENDATIONS. THESE SYSTEMS SHALL BE NCHRP 350 COMPLIANT AND NCDOT APPROVED.
- 3) ADVANCE WARNING SIGNS NOT REQUIRED ON NON-SIGNALIZED SIDE STREETS.
- 4) MAY USE LAW ENFORCEMENT TO CONTROL TRAFFIC AT SIGNALIZED INTERSECTIONS AS DIRECTED BY THE ENGINEER. PROVIDE PORTABLE "ROAD WORK AHEAD" (W20-1) SIGNS 500' IN ADVANCE ALONG BOTH APPROACHES FROM THE SIDE STREETS WHEN PAVING PROCEEDS THROUGH THE INTERSECTION.
- 5) LATERAL CLEARANCE AT ALL SIGN LOCATIONS SHALL BE 2' AS MEASURED FROM THE EDGE OF PAVEMENT OR THE FACE OF THE CURB. WHEN UNABLE TO OBTAIN THE LATERAL CLEARANCE WITHIN THE MEDIAN AREA USE SHOULDER MOUNTS ONLY.
- 6) SIGN MOUNT LOCATIONS SHALL NOT BLOCK SIDEWALKS OR DRIVEWAYS.
- 7) IF STATIONARY GENERAL WARNING SIGNS ARE USED, THEY WILL BE PAID FOR PER SECTION 104 OF THE NCDOT STANDARD SPECIFICATIONS AS EXTRA WORK.
- 8) IF MILLED AREAS ARE NOT PAVED BACK BY THE END OF THE WORK DAY, PORTABLE SIGNS SHALL BE USED TO WARN DRIVERS OF THE PRESENT CONDITIONS. THESE ARE TO INCLUDE, BUT NOT LIMITED TO "ROUGH ROAD" W8-8, "UNEVEN LANES" W8-11, "GROOVED PAVEMENT" W8-15 w/MOTORCYCLE PLAQUE MOUNTED BELOW. THESE ARE TO BE DOUBLE INDICATED ON MULTI-LANE ROADWAYS WITH SPEED LIMITS 45 MPH AND GREATER WHERE LATERAL CLEARANCE CAN BE OBTAINED WITHIN THE MEDIAN AREAS. THESE PORTABLE SIGNS ARE INCIDENTAL TO THE OTHER ITEMS OF WORK INCLUDED IN THE TEMPORARY TRAFFIC CONTROL (LUMP SUM) PAY ITEM.

LEGEND

- STATIONARY SIGN
- DIRECTION OF TRAFFIC FLOW



**RESURFACING ADVANCE
WARNING SIGNS FOR
URBAN / SUBURBAN
FACILITIES**

County : Pitt

Line #	Item Number	Sec #	Description	Quantity	Unit Cost	Amount
ROADWAY ITEMS						
0001	0000100000-N	800	MOBILIZATION	Lump Sum	L.S.	
0002	0000930000-E	SP	GENERIC MISCELLANEOUS ITEM REMOVE AND REPLACE 2'6" CURB & GUTTER	650 LF		
0003	0000930000-E	SP	GENERIC MISCELLANEOUS ITEM REMOVE AND REPLACE CONCRETE VA LLEY GUTTE	100 LF		
0004	1297000000-E	607	MILLING ASPHALT PAVEMENT, **** DEPTH 2.5" MILLING	90,000 SY		
0005	1330000000-E	607	INCIDENTAL MILLING	800 SY		
0006	1519000000-E	610	ASPHALT CONC SURFACE COURSE, TYPE S9.5B	8,250 TON		
0007	1575000000-E	620	ASPHALT BINDER FOR PLANT MIX	555 TON		
0008	2600000000-N	848	RETROFIT EXISTING CURB RAMPS	75 EA		
0009	2605000000-N	848	CONCRETE CURB RAMPS	10 EA		
0010	2830000000-N	858	ADJUSTMENT OF MANHOLES	1 EA		
0011	2845000000-N	858	ADJUSTMENT OF METER BOXES OR VALVE BOXES	1 EA		
0012	4413000000-E	SP	WORK ZONE ADVANCE/GENERAL WARNING SIGNING	130 SF		
0013	4457000000-N	SP	TEMPORARY TRAFFIC CONTROL	Lump Sum	L.S.	
0014	4690000000-E	1205	THERMOPLASTIC PAVEMENT MARKING LINES (6", 120 MILS)	39,000 LF		
0015	4702000000-E	1205	THERMOPLASTIC PAVEMENT MARKING LINES (12", 120 MILS)	1,200 LF		
0016	4710000000-E	1205	THERMOPLASTIC PAVEMENT MARKING LINES (24", 120 MILS)	2,100 LF		
0017	4721000000-E	1205	THERMOPLASTIC PAVEMENT MARKING CHARACTER (120 MILS)	4 EA		

County : Pitt

Line #	Item Number	Sec #	Description	Quantity	Unit Cost	Amount
0018	4725000000-E	1205	THERMOPLASTIC PAVEMENT MARKING SYMBOL (90 MILS)	156	EA	
0019	4898000000-N	1251	GENERIC PAVEMENT MARKING ITEM THERMO BIKE SYMBOL	2	EA	
0020	4905000000-N	1253	SNOWPLOWABLE PAVEMENT MARKERS	750	EA	
0929/May25/Q143786.0/D58823960000/E20			Total Amount Of Bid For Entire Project :			