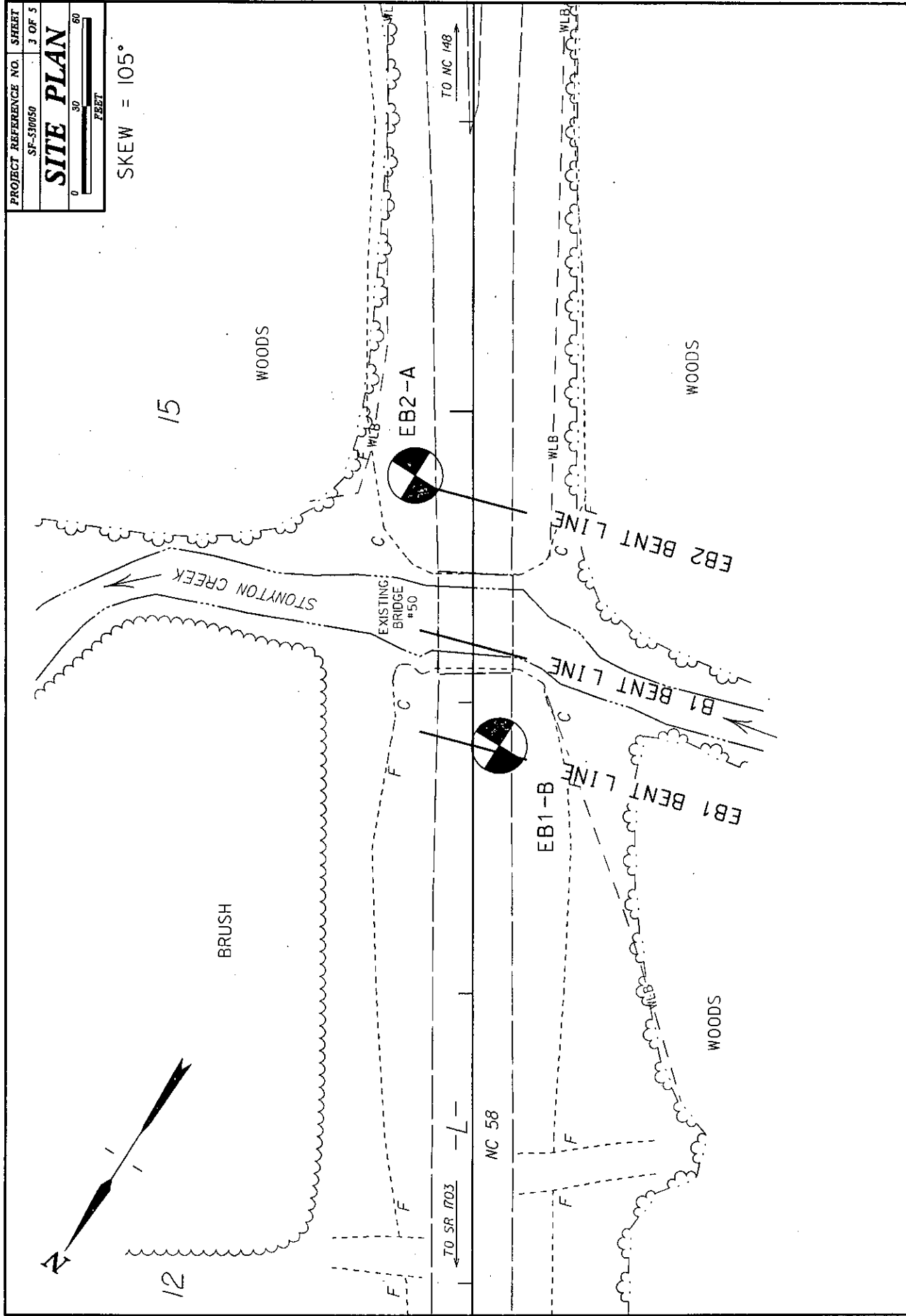






SKEW = 105°

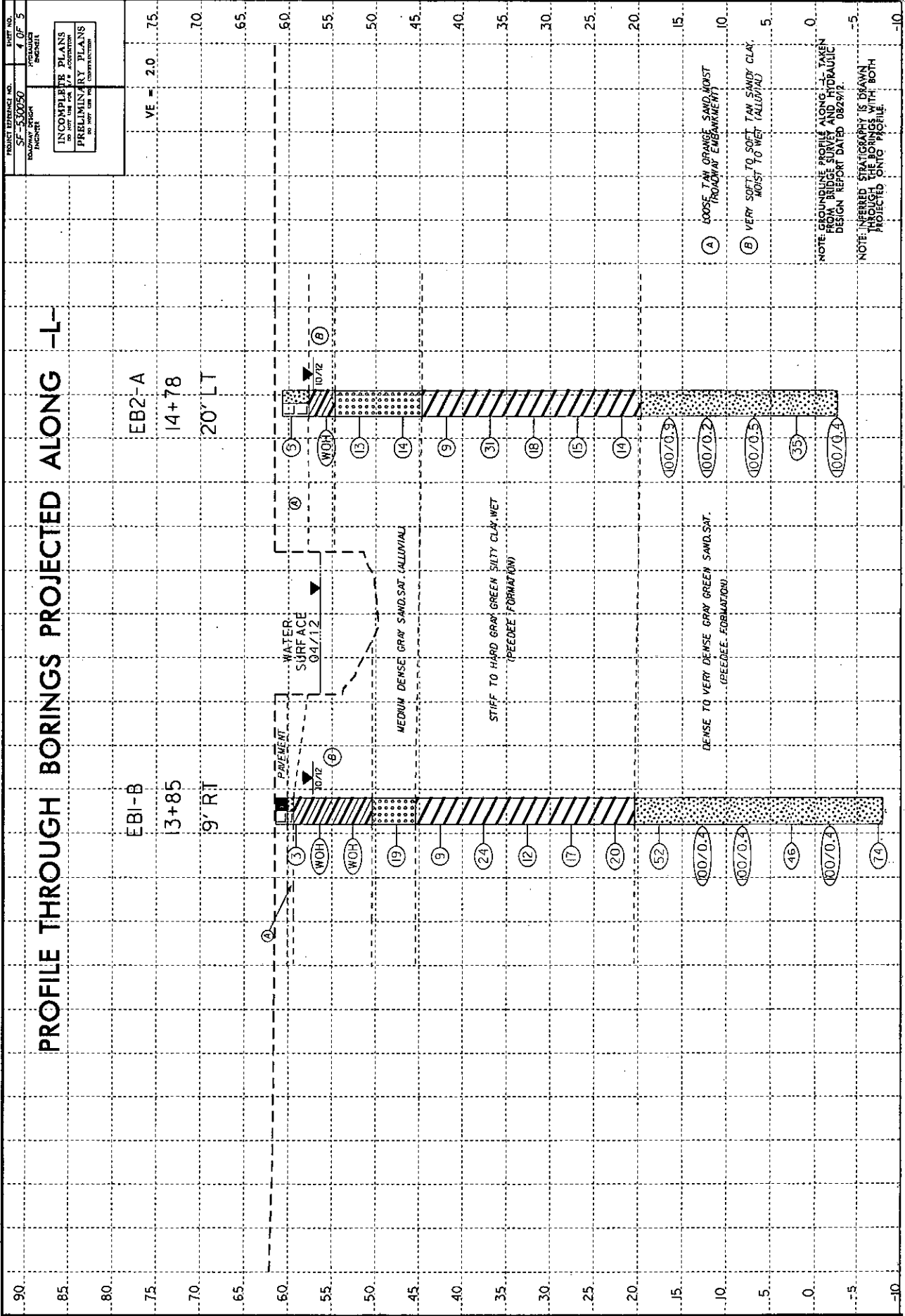


INCOMPLETE PLANS  
 DO NOT USE FOR CONSTRUCTION  
 PRELIMINARY PLANS  
 DO NOT USE FOR CONSTRUCTION

# PROFILE THROUGH BORINGS PROJECTED ALONG -L-

EB2-A  
 14+78  
 20' LT

EB1-B  
 13+85  
 9' RT



(A) LOOSE, TAN ORANGE SAND, MOIST (ROADWAY EMBANKMENT)

(B) VERY SOFT, TO SOFT, TAN SANDY CLAY, MOIST TO WET (ALLUVIAL)

NOTE: GROUNDLINE PROFILE ALONG -L- TAKEN FROM BRIDGE SURVEY AND HYDRAULIC DESIGN REPORT DATED 08/29/12

NOTE: INFERRED STRATIGRAPHY IS DRAWN THROUGH THE BORINGS WITH BOTH PROJECTED ONTO PROFILE.

