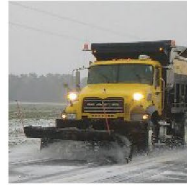


NORTH CAROLINA

Department of Transportation

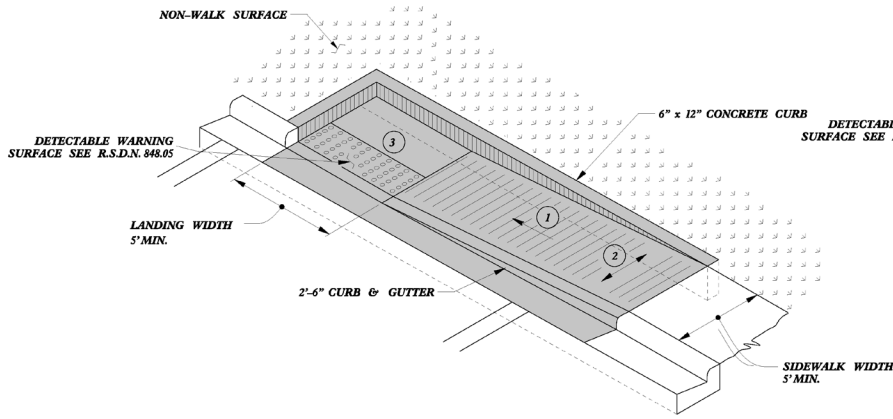


R-5782MC Side Walk Ramps Project

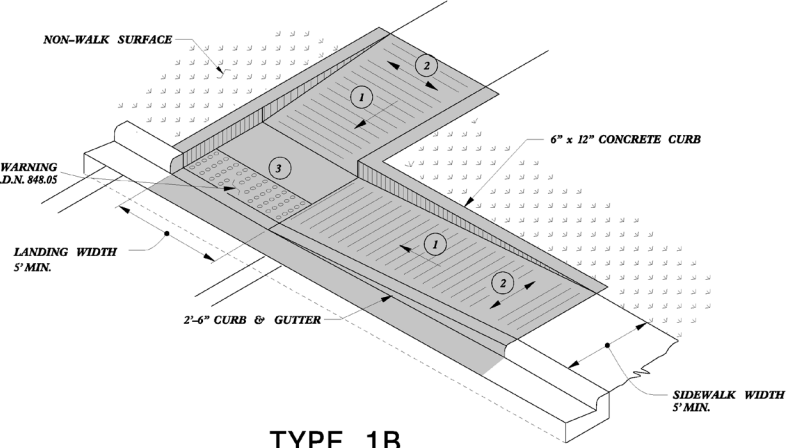
Hon Yeung, PE

2022

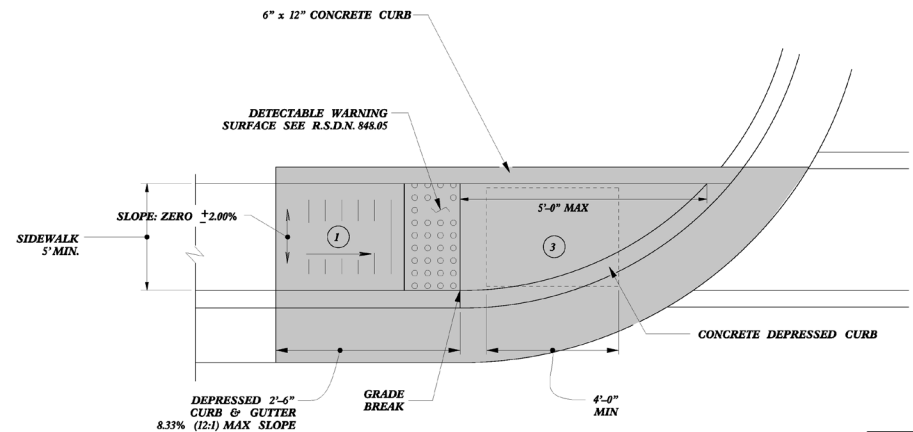
City of Greenville



TYPE 1A



TYPE 1B



TYPE 1

PAY LIMITS FOR 1 CURB RAMP

- 1 8.33% (12:1) MAX RAMP SLOPE
- 2 CROSS SLOPE: 2.00%
- 3 CURB RAMPS REQUIRE A (4'-0") MINIMUM LANDING WITH A MAXIMUM CROSS SLOPE AND LONGITUDINAL SLOPE OF 2.00% WHERE PEDESTRIANS PERFORM TURNING MANEUVERS. SLOPE TO DRAIN TO CURB.

REFER TO ROADWAY STANDARD DRAWING NUMBER 848.05 SHEET 3 OF 3 FOR ALL RAMP NOTES

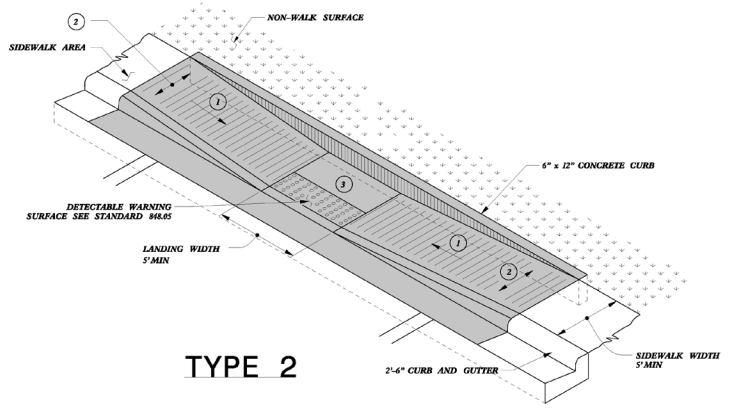


DOCUMENT NOT CONSIDERED FINAL
UNLESS ALL SIGNATURES COMPLETED

**CONTRACT STANDARDS
AND DEVELOPMENT UNIT**
Office 919-707-6950 FAX 919-250-4119

CURB RAMPS
Directional Ramps

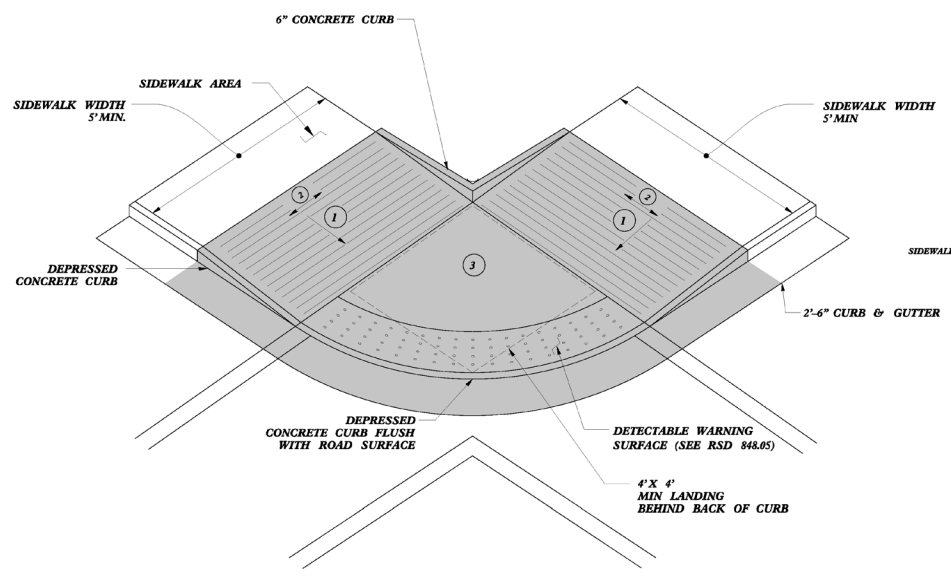
ORIGINAL BY: J.S. HOWERTON DATE: 7/7/11
 MODIFIED BY: _____ DATE: _____
 CHECKED BY: _____ DATE: _____
 FILE SPEC: stds/2012CurbRamp/CurbRampDetails.dgn



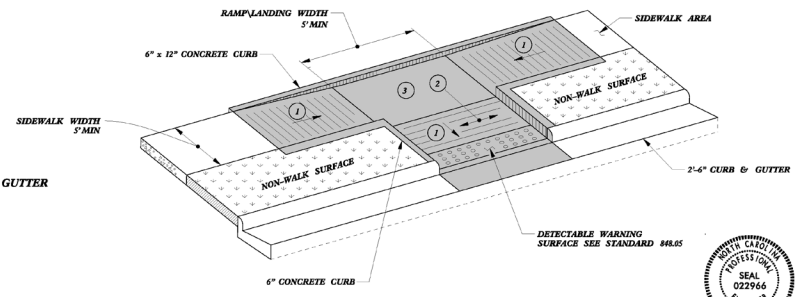
TYPE 2

PAY LIMITS FOR 1 CURB RAMP

- ① 8.33% (12:1) MAX RAMP SLOPE
- ② CROSS SLOPE: 2.00%
- ③ CURB RAMPS REQUIRE A (4'-0") MINIMUM LANDING WITH A MAXIMUM CROSS SLOPE AND LONGITUDINAL SLOPE OF 2.00% WHERE PEDESTRIANS PERFORM TURNING MANEUVERS. SLOPE TO DRAIN TO CURB.



TYPE 2A



TYPE 3



DOCUMENT NOT CONSIDERED FINAL UNLESS ALL SIGNATURES COMPLETED

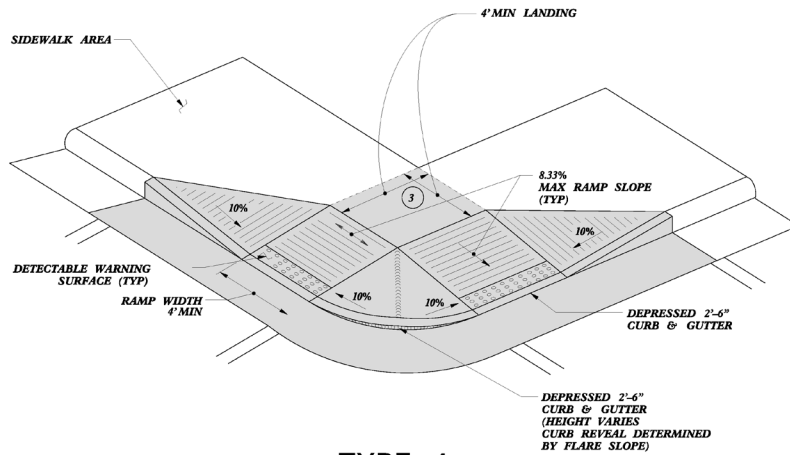
CONTRACT STANDARDS AND DEVELOPMENT UNIT
Office 919-707-5850 FAX 919-250-4119

CURB RAMPS
Parallel Ramps

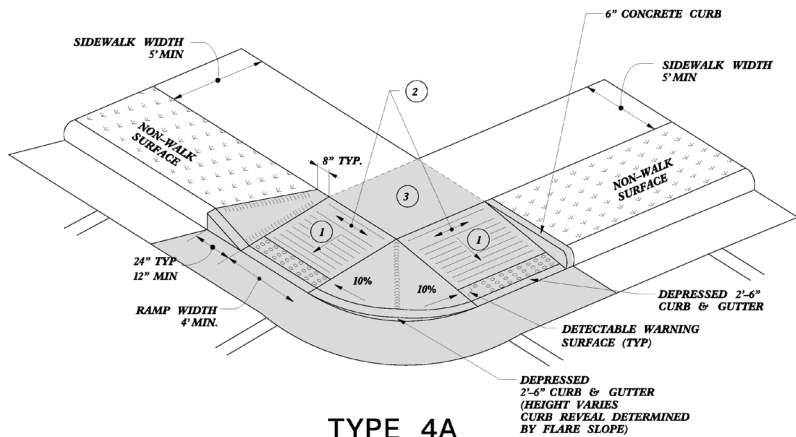
ORIGINAL BY: J.S. HOWERTON DATE: 7/7/11
MODIFIED BY: DATE:
CHECKED BY: DATE:
FILE SPEC: rtds/2012curbRamp/curbRampDetails.dgn

REFER TO ROADWAY STANDARD DRAWING NUMBER 848.05 SHEET 3 OF 3 FOR ALL RAMP NOTES

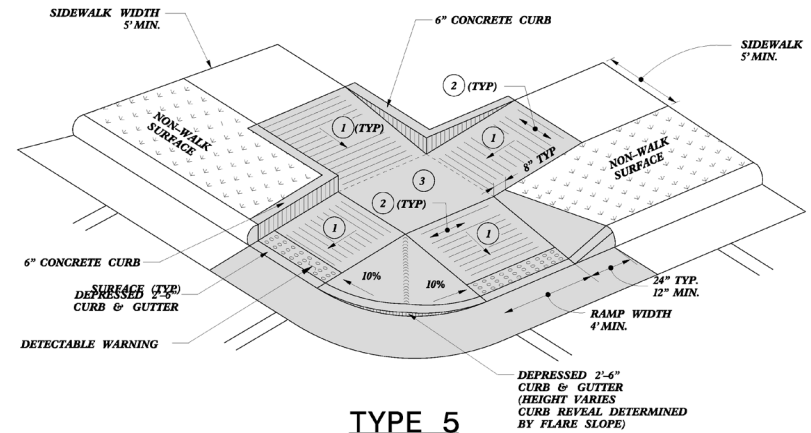
PROJECT REFERENCE NO.	SHEET NO.
-----------------------	-----------



TYPE 4



TYPE 4A



TYPE 5

PAY LIMITS FOR 2 CURB RAMPS

- 1 8.33% (12:1) MAX RAMP SLOPE
- 2 CROSS SLOPE: 2.00%
- 3 CURB RAMPS REQUIRE A (4'-0") MINIMUM LANDING WITH A MAXIMUM CROSS SLOPE AND LONGITUDINAL SLOPE OF 2.00% WHERE PEDESTRIANS PERFORM TURNING MANEUVERS. SLOPE TO DRAIN TO CURB.

REFER TO ROADWAY STANDARD DRAWING NUMBER 848.05 SHEET 3 OF 3 FOR ALL RAMP NOTES



DOCUMENT NOT CONSIDERED FINAL UNLESS ALL SIGNATURES COMPLETED

CONTRACT STANDARDS AND DEVELOPMENT UNIT
Office 919-707-6950 FAX 919-250-4119

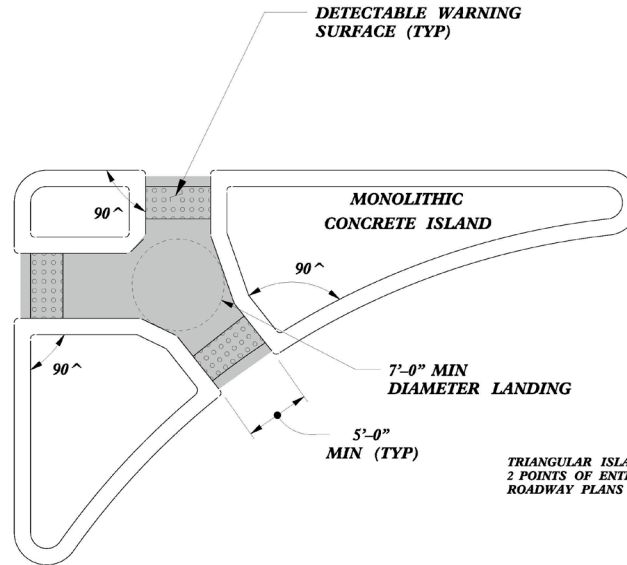
CURB RAMPS
Shared Landing

ORIGINAL BY: J.S. HOWERTON DATE: 7/7/11
MODIFIED BY: DATE:
CHECKED BY: DATE:
FILE SPEC: s1ds/2012CurbRamp/CurbRampDetails.dwg

6/12/09

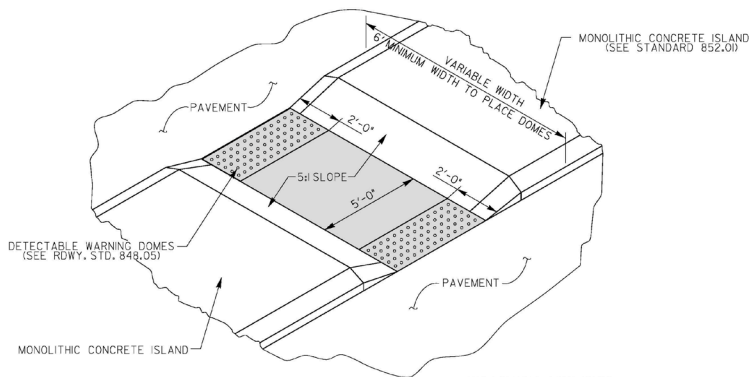
PROJECT REFERENCE NO.	SHEET NO.
-----------------------	-----------

PAY LIMITS FOR 2 OR 3 CURB RAMPS
(CALCULATE BASED ON NUMBER OF
SETS OF TRUNCATED DOMES)

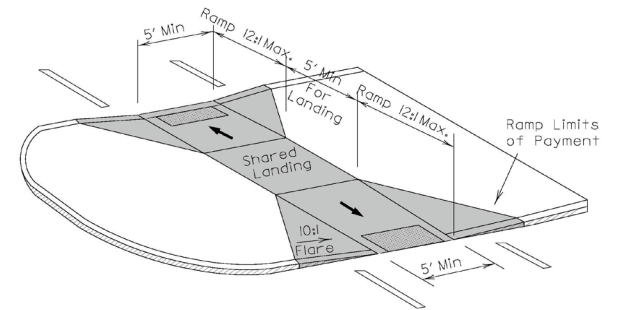


TRIANGULAR ISLANDS MAY BE CONSTRUCTED WITH ONLY
2 POINTS OF ENTRY AND EXIT AS SHOWN IN THE
ROADWAY PLANS OR AS DIRECTED BY THE ENGINEER.

**TRIANGULAR ISLAND
WITH CUT THROUGH**



**MEDIAN ISLAND
WITH CUT THROUGH**



**MEDIAN ISLAND
CURB RAMPS**

DOCUMENT NOT CONSIDERED FINAL
UNLESS ALL SIGNATURES COMPLETED



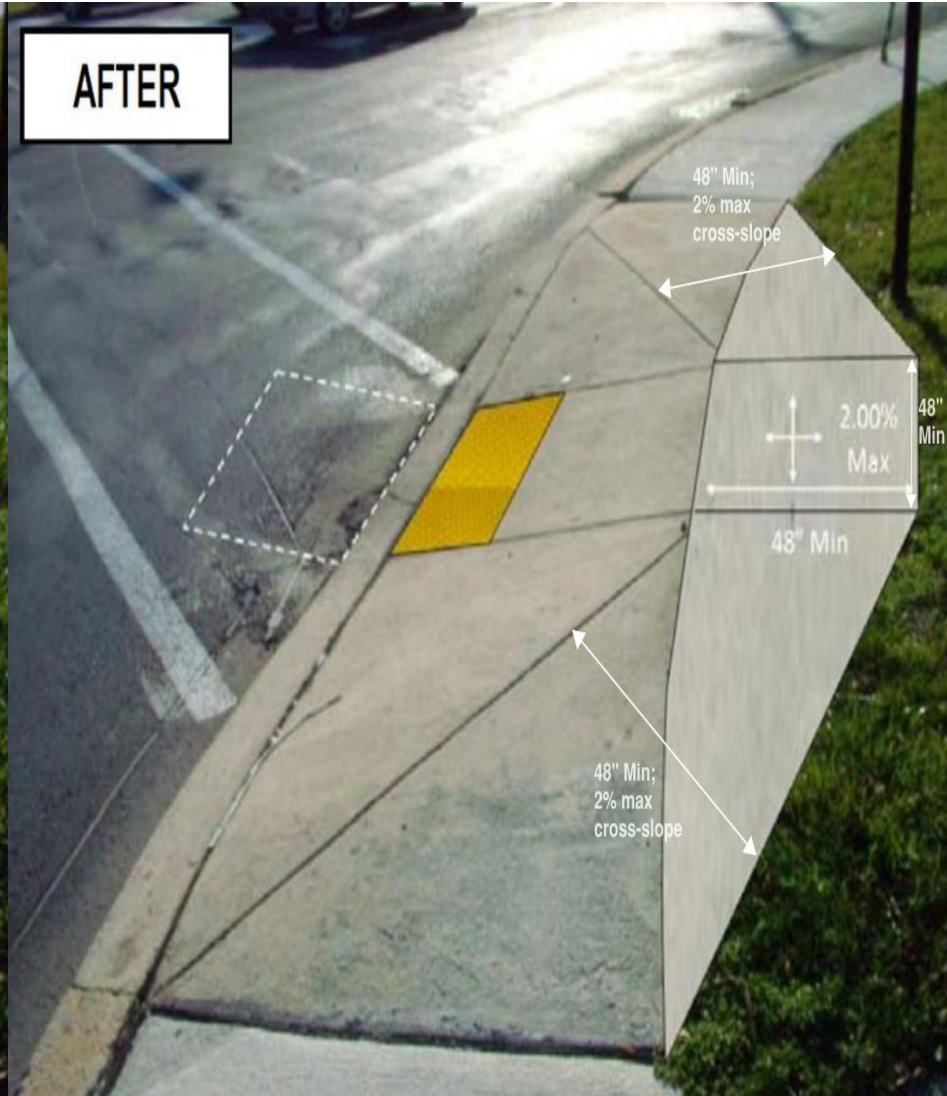
CONTRACT STANDARDS AND DEVELOPMENT UNIT	
Office 919-707-6950	FAX 919-250-4119
CURB RAMPS	
Median or Turn Lane Islands	
ORIGINAL BY: J.S. HOWERTON	DATE: 7/7/11
MODIFIED BY:	DATE:
CHECKED BY:	DATE:
FILE SPEC: s.tds/2012CurbRamp/CurbRampDetails.dwg	

Special Detail A

BEFORE

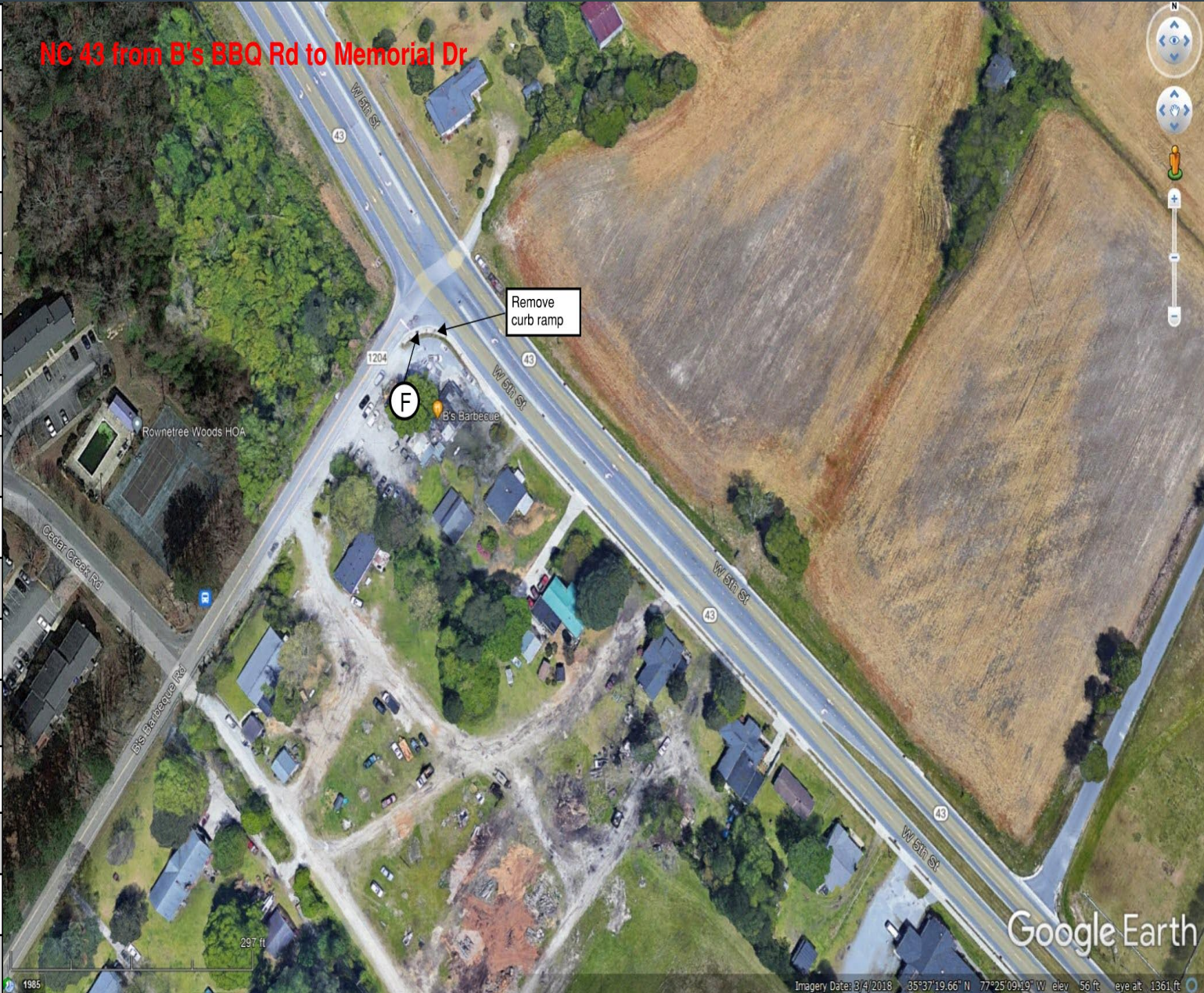


AFTER



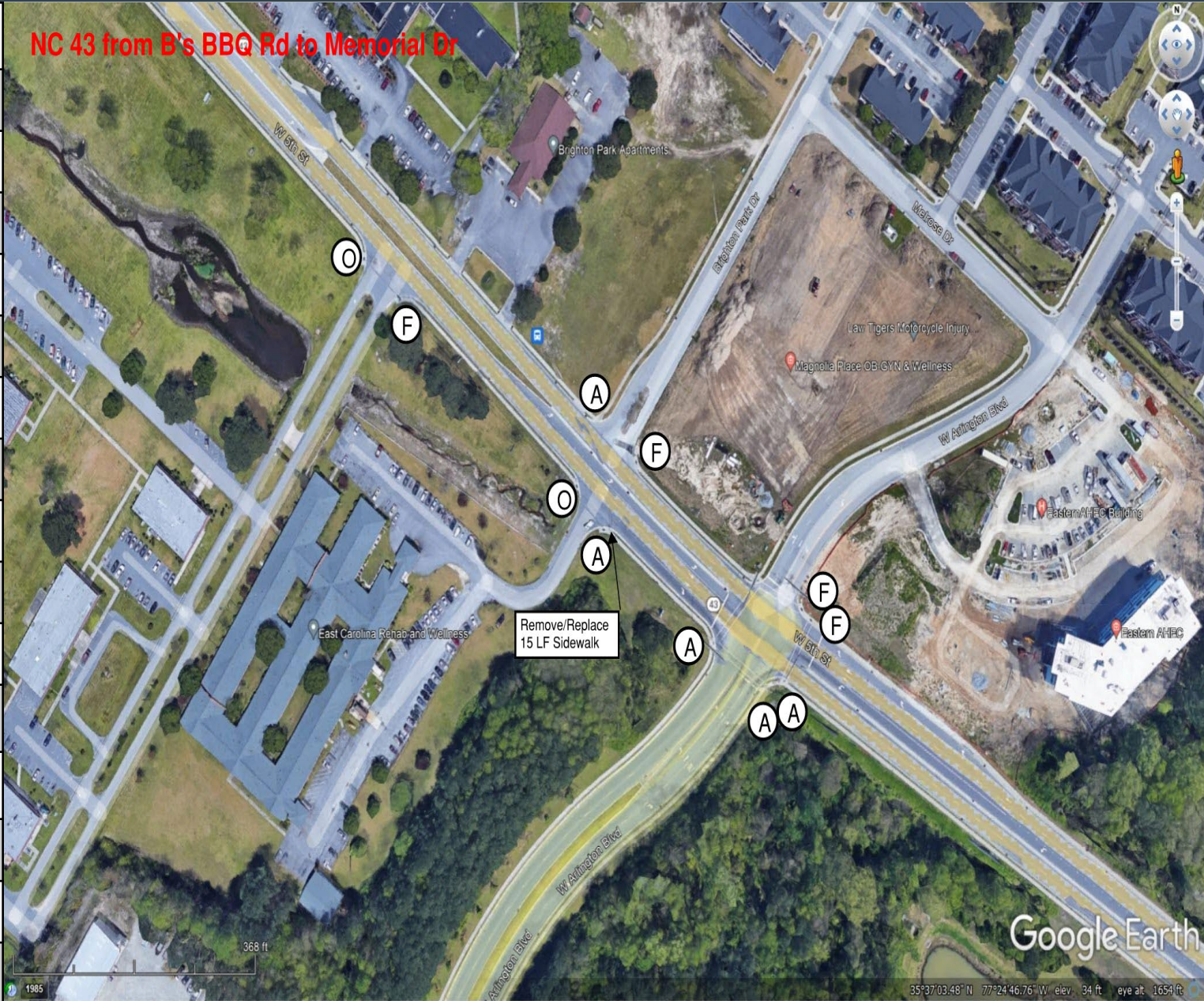
NC 43 from B's BBQ Rd to Memorial Dr

A	Standard 848.06
B	Detectable Warning Domes Only
C	Type 1
D	Type 1A
E	Type 1B
F	Type 2
G	Type 2A
H	Type 3
I	Type 4
J	Type 4A
K	Type 5
L	Median Island curb ramps
M	Median island w/ cut through
N	Triangular island w/ cut through
O	Special Detail A



NC 43 from B's BBQ Rd to Memorial Dr

A	Standard 848.06
B	Detectable Warning Domes Only
C	Type 1
D	Type 1A
E	Type 1B
F	Type 2
G	Type 2A
H	Type 3
I	Type 4
J	Type 4A
K	Type 5
L	Median Island curb ramps
M	Median island w/ cut through
N	Triangular island w/ cut through
O	Special Detail A



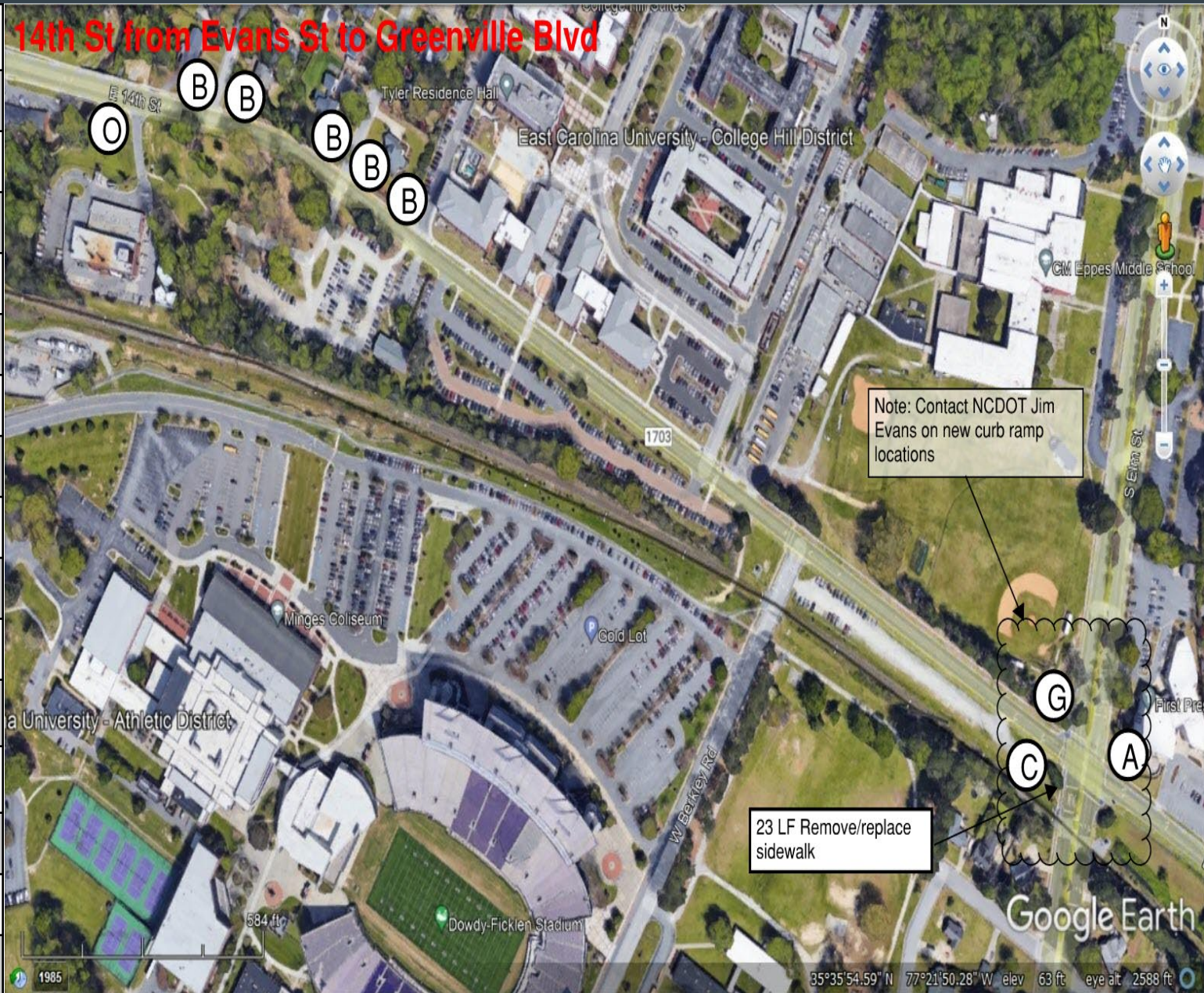
A	Standard 848.06
B	Detectable Warning Domes Only
C	Type 1
D	Type 1A
E	Type 1B
F	Type 2
G	Type 2A
H	Type 3
I	Type 4
J	Type 4A
K	Type 5
L	Median Island curb ramps
M	Median island w/ cut through
N	Triangular island w/ cut through
O	Special Detail A



A	Standard 848.06
B	Detectable Warning Domes Only
C	Type 1
D	Type 1A
E	Type 1B
F	Type 2
G	Type 2A
H	Type 3
I	Type 4
J	Type 4A
K	Type 5
L	Median Island curb ramps
M	Median island w/ cut through
N	Triangular island w/ cut through
O	Special Detail A

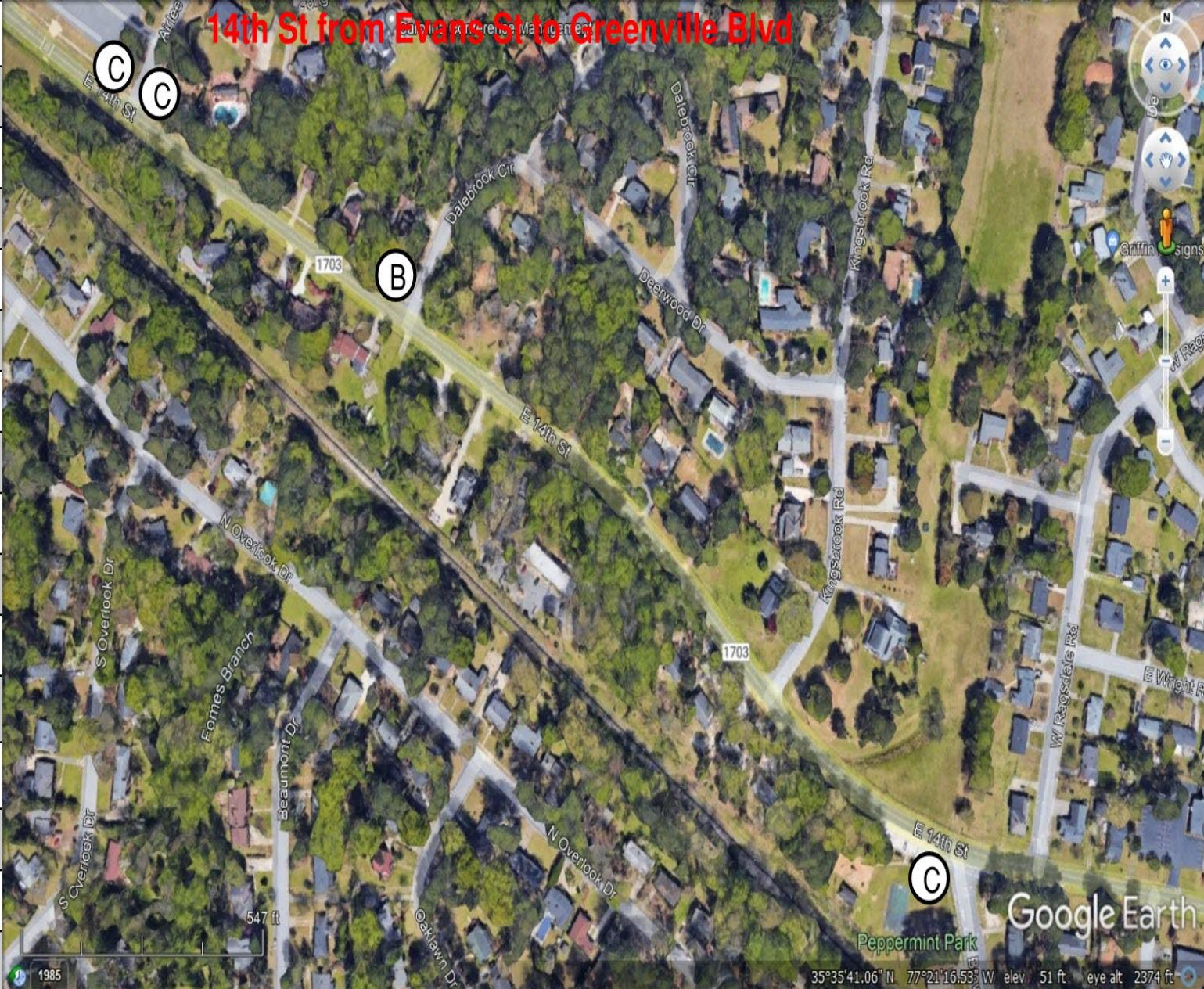


A	Standard 848.06
B	Detectable Warning Domes Only
C	Type 1
D	Type 1A
E	Type 1B
F	Type 2
G	Type 2A
H	Type 3
I	Type 4
J	Type 4A
K	Type 5
L	Median Island curb ramps
M	Median island w/ cut through
N	Triangular island w/ cut through
O	Special Detail A



14th St from Evans St to Greenville Blvd

A	Standard 848.06
B	Detectable Warning Domes Only
C	Type 1
D	Type 1A
E	Type 1B
F	Type 2
G	Type 2A
H	Type 3
I	Type 4
J	Type 4A
K	Type 5
L	Median Island curb ramps
M	Median island w/ cut through
N	Triangular island w/ cut through
O	Special Detail A

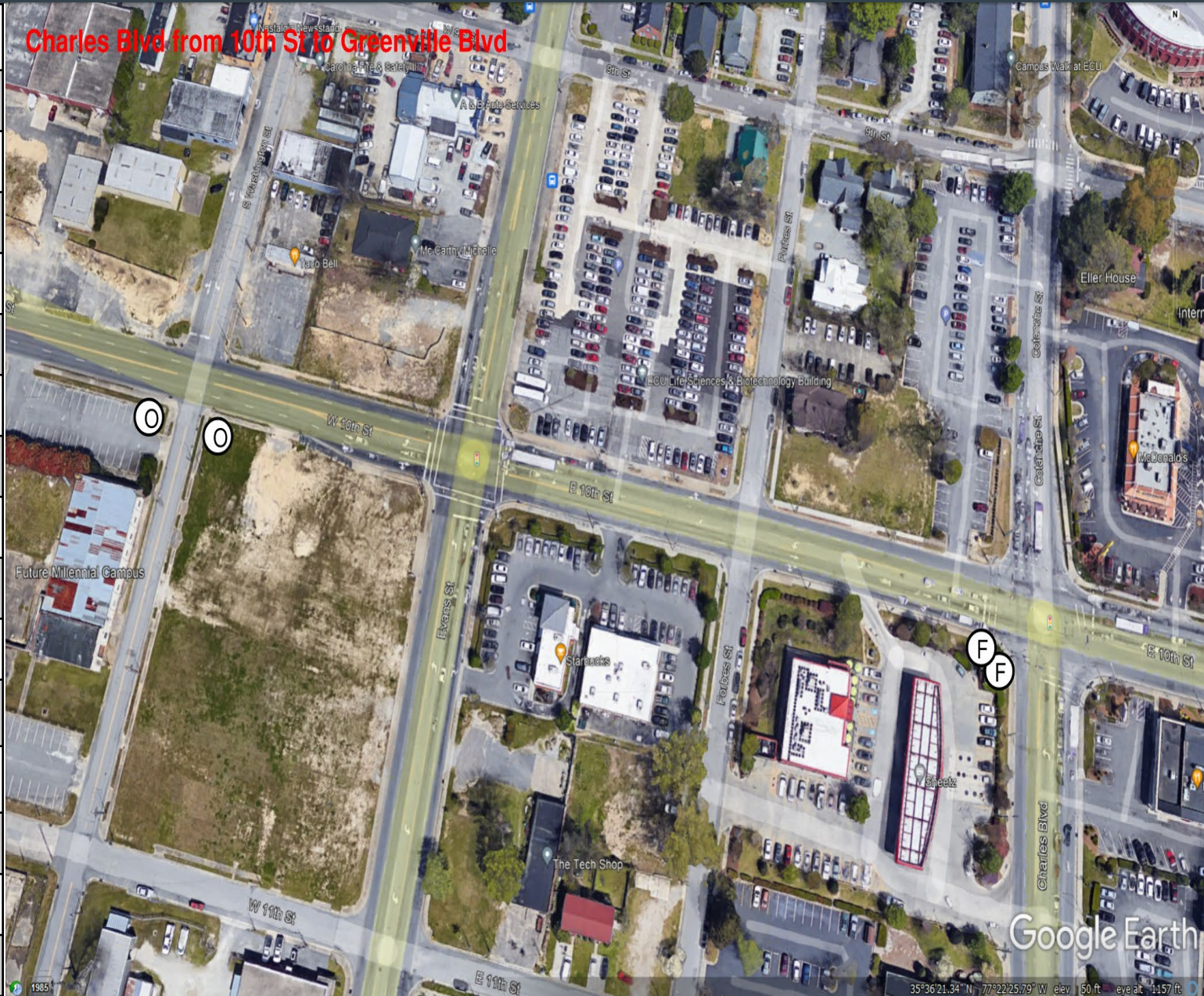


A	Standard 848.06
B	Detectable Warning Domes Only
C	Type 1
D	Type 1A
E	Type 1B
F	Type 2
G	Type 2A
H	Type 3
I	Type 4
J	Type 4A
K	Type 5
L	Median Island curb ramps
M	Median island w/ cut through
N	Triangular island w/ cut through
O	Special Detail A

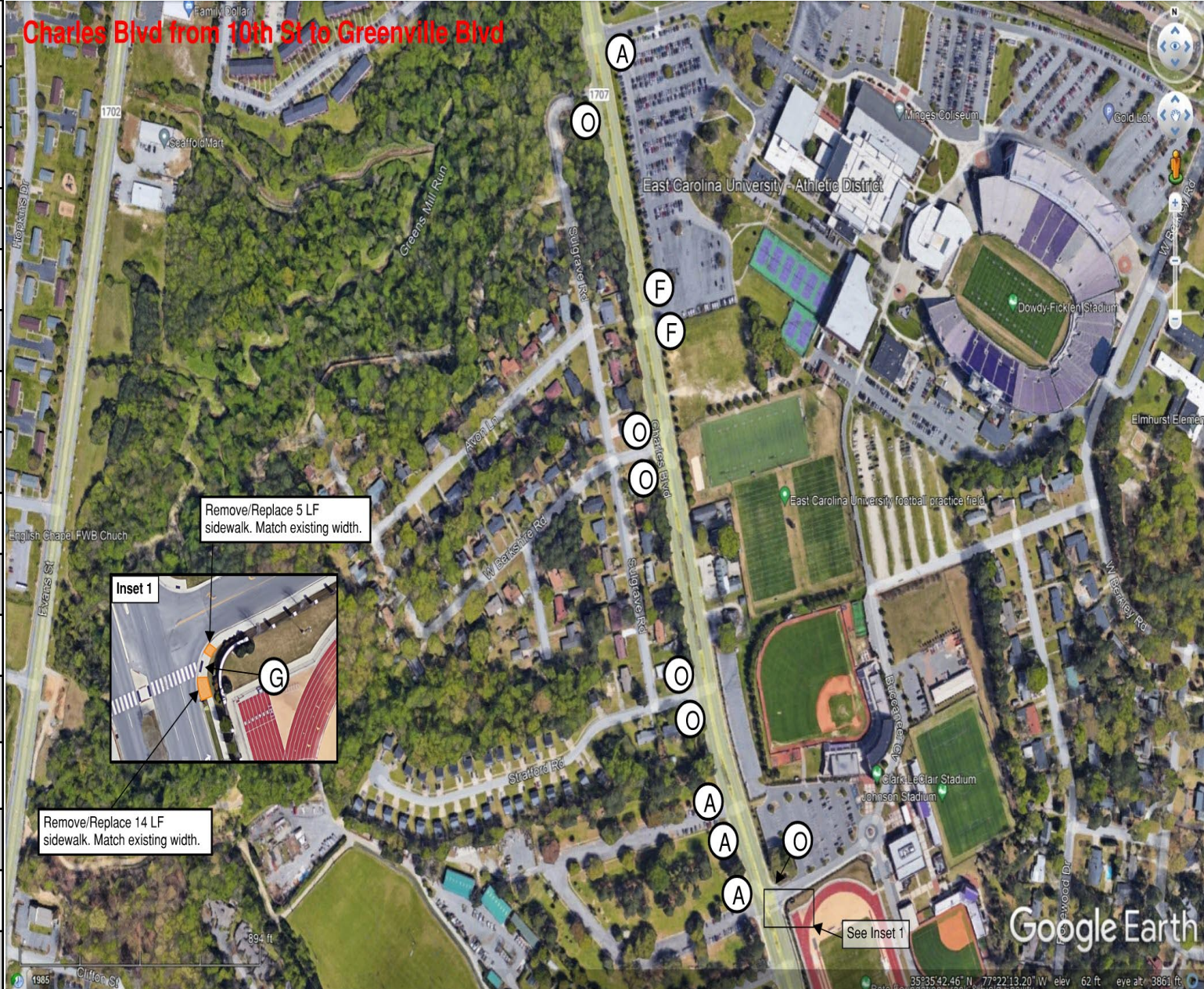


Charles Blvd from 10th St to Greenville Blvd

A	Standard 848.06
B	Detectable Warning Domes Only
C	Type 1
D	Type 1A
E	Type 1B
F	Type 2
G	Type 2A
H	Type 3
I	Type 4
J	Type 4A
K	Type 5
L	Median Island curb ramps
M	Median island w/ cut through
N	Triangular island w/ cut through
O	Special Detail A



A	Standard 848.06
B	Detectable Warning Domes Only
C	Type 1
D	Type 1A
E	Type 1B
F	Type 2
G	Type 2A
H	Type 3
I	Type 4
J	Type 4A
K	Type 5
L	Median Island curb ramps
M	Median island w/ cut through
N	Triangular island w/ cut through
O	Special Detail A



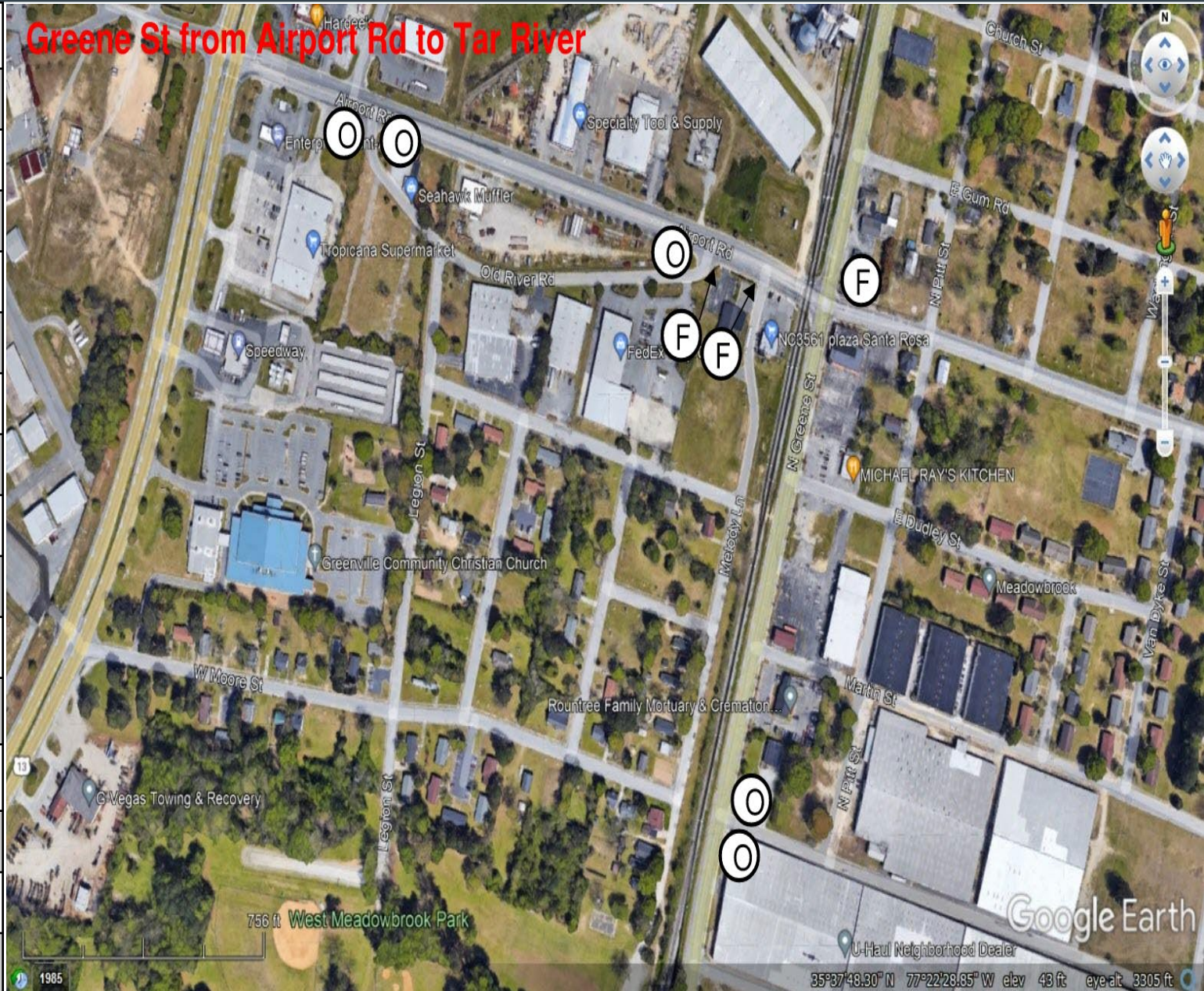
Evans Street from 14th St to Arlington Blvd

A	Standard 848.06
B	Detectable Warning Domes Only
C	Type 1
D	Type 1A
E	Type 1B
F	Type 2
G	Type 2A
H	Type 3
I	Type 4
J	Type 4A
K	Type 5
L	Median Island curb ramps
M	Median island w/ cut through
N	Triangular island w/ cut through
O	Special Detail A



Greene St from Airport Rd to Tar River

A	Standard 848.06
B	Detectable Warning Domes Only
C	Type 1
D	Type 1A
E	Type 1B
F	Type 2
G	Type 2A
H	Type 3
I	Type 4
J	Type 4A
K	Type 5
L	Median Island curb ramps
M	Median island w/ cut through
N	Triangular island w/ cut through
O	Special Detail A



Greene St from Airport Rd to Tar River

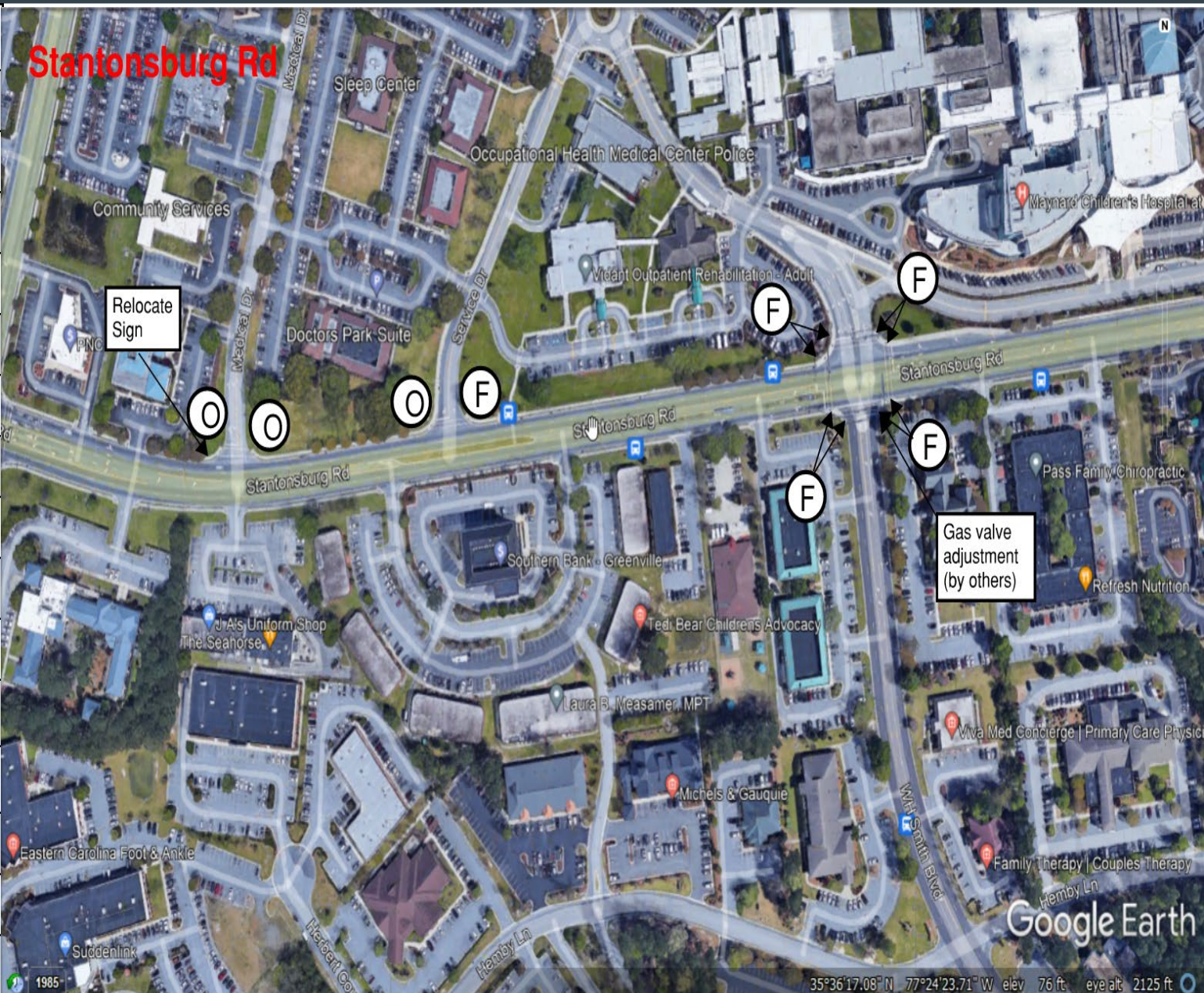
A	Standard 848.06
B	Detectable Warning Domes Only
C	Type 1
D	Type 1A
E	Type 1B
F	Type 2
G	Type 2A
H	Type 3
I	Type 4
J	Type 4A
K	Type 5
L	Median Island curb ramps
M	Median island w/ cut through
N	Triangular island w/ cut through
O	Special Detail A



A	Standard 848.06
B	Detectable Warning Domes Only
C	Type 1
D	Type 1A
E	Type 1B
F	Type 2
G	Type 2A
H	Type 3
I	Type 4
J	Type 4A
K	Type 5
L	Median Island curb ramps
M	Median island w/ cut through
N	Triangular island w/ cut through
O	Special Detail A



A	Standard 848.06
B	Detectable Warning Domes Only
C	Type 1
D	Type 1A
E	Type 1B
F	Type 2
G	Type 2A
H	Type 3
I	Type 4
J	Type 4A
K	Type 5
L	Median Island curb ramps
M	Median island w/ cut through
N	Triangular island w/ cut through
O	Special Detail A



A	Standard 848.06
B	Detectable Warning Domes Only
C	Type 1
D	Type 1A
E	Type 1B
F	Type 2
G	Type 2A
H	Type 3
I	Type 4
J	Type 4A
K	Type 5
L	Median Island curb ramps
M	Median island w/ cut through
N	Triangular island w/ cut through
O	Special Detail A

