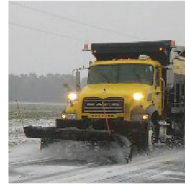


## NORTH CAROLINA

Department of Transportation



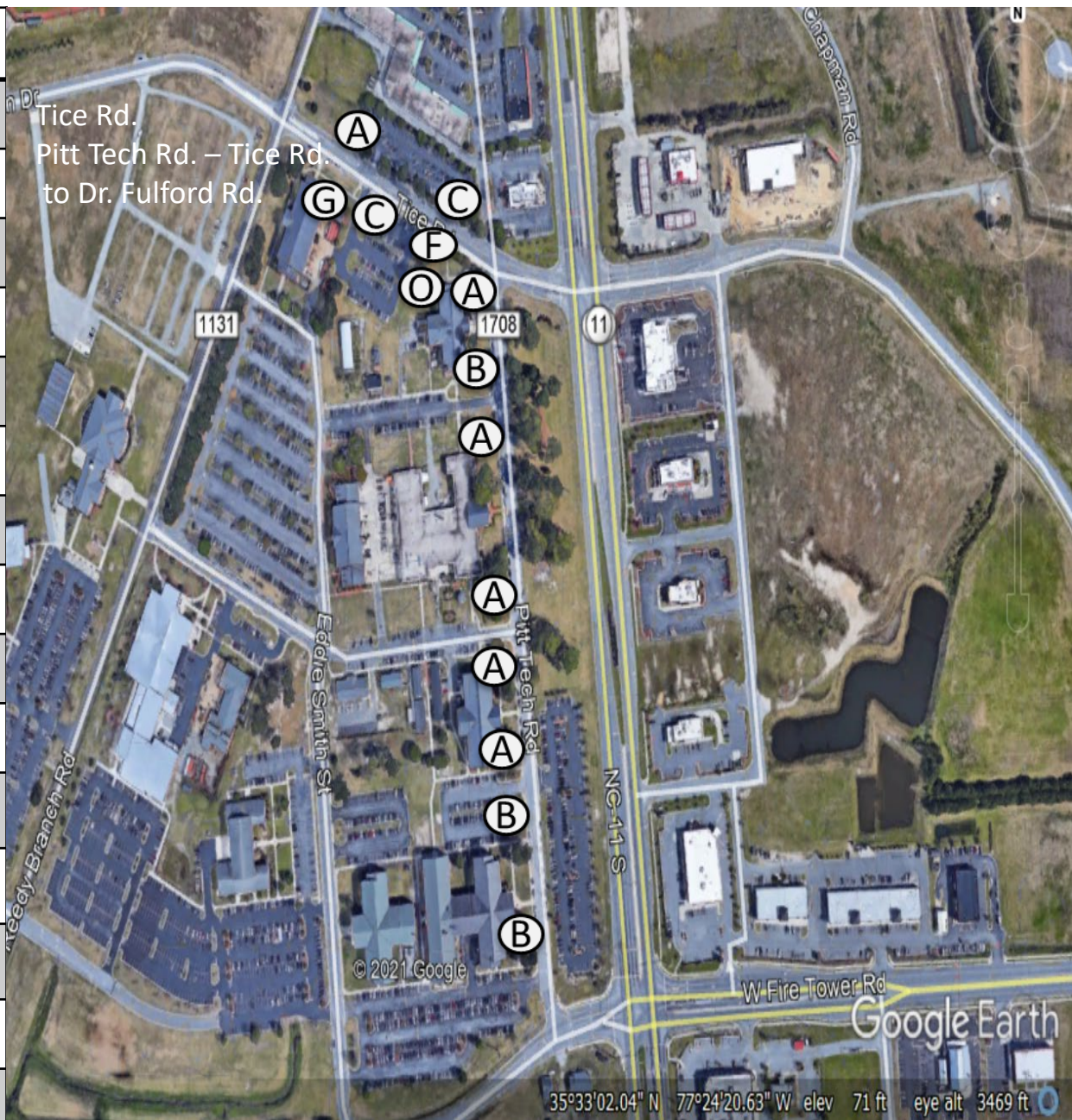
# R-5782MA - Side Walk Ramps Project

Jeff Cabaniss, PE

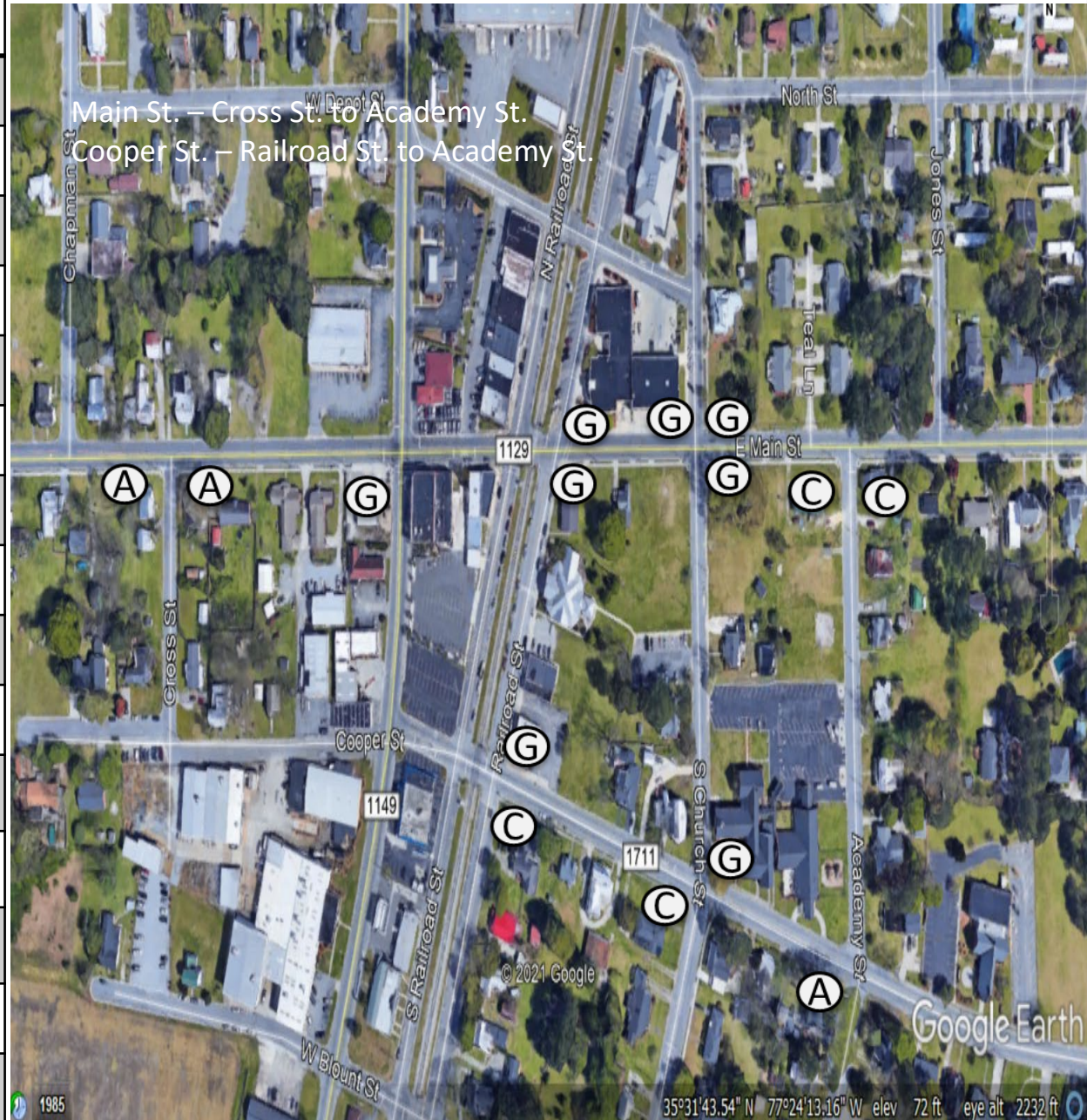
2021

Town of Winterville

A	Standard Wheelchair Ramp 848.05	(A)
B	Detectable Warning Domes Only	(B)
C	Type 1	(C)
D	Type 1A	(D)
E	Type 1B	(E)
F	Type 2	(F)
G	Type 2A	(G)
H	Type 3	(H)
I	Type 4	(I)
J	Type 4A	(J)
K	Type 5	(K)
L	Median Island curb ramps	(L)
M	Median island with Cut through	(M)
N	Triangular island with Cut through	(N)
O	Additional Sidewalk Work to meet ADA compliance	(O)
P	Special Detail A	(P)



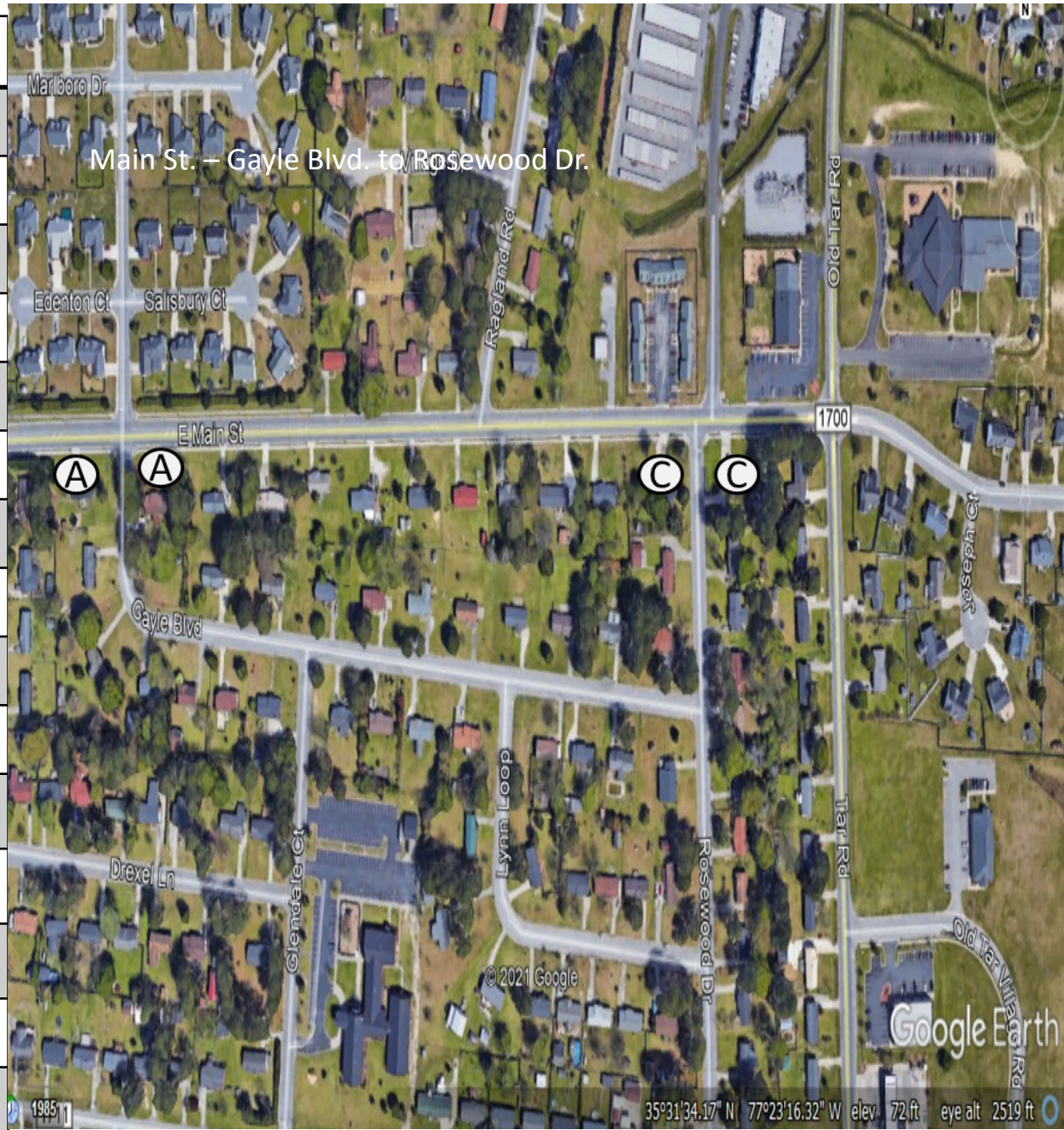
A	Standard Wheelchair Ramp 848.05	(A)
B	Detectable Warning Domes Only	(B)
C	Type 1	(C)
D	Type 1A	(D)
E	Type 1B	(E)
F	Type 2	(F)
G	Type 2A	(G)
H	Type 3	(H)
I	Type 4	(I)
J	Type 4A	(J)
K	Type 5	(K)
L	Median Island curb ramps	(L)
M	Median island with Cut through	(M)
N	Triangular island with Cut through	(N)
O	Additional Sidewalk Work to meet ADA compliance	(O)
P	Special Detail A	(P)



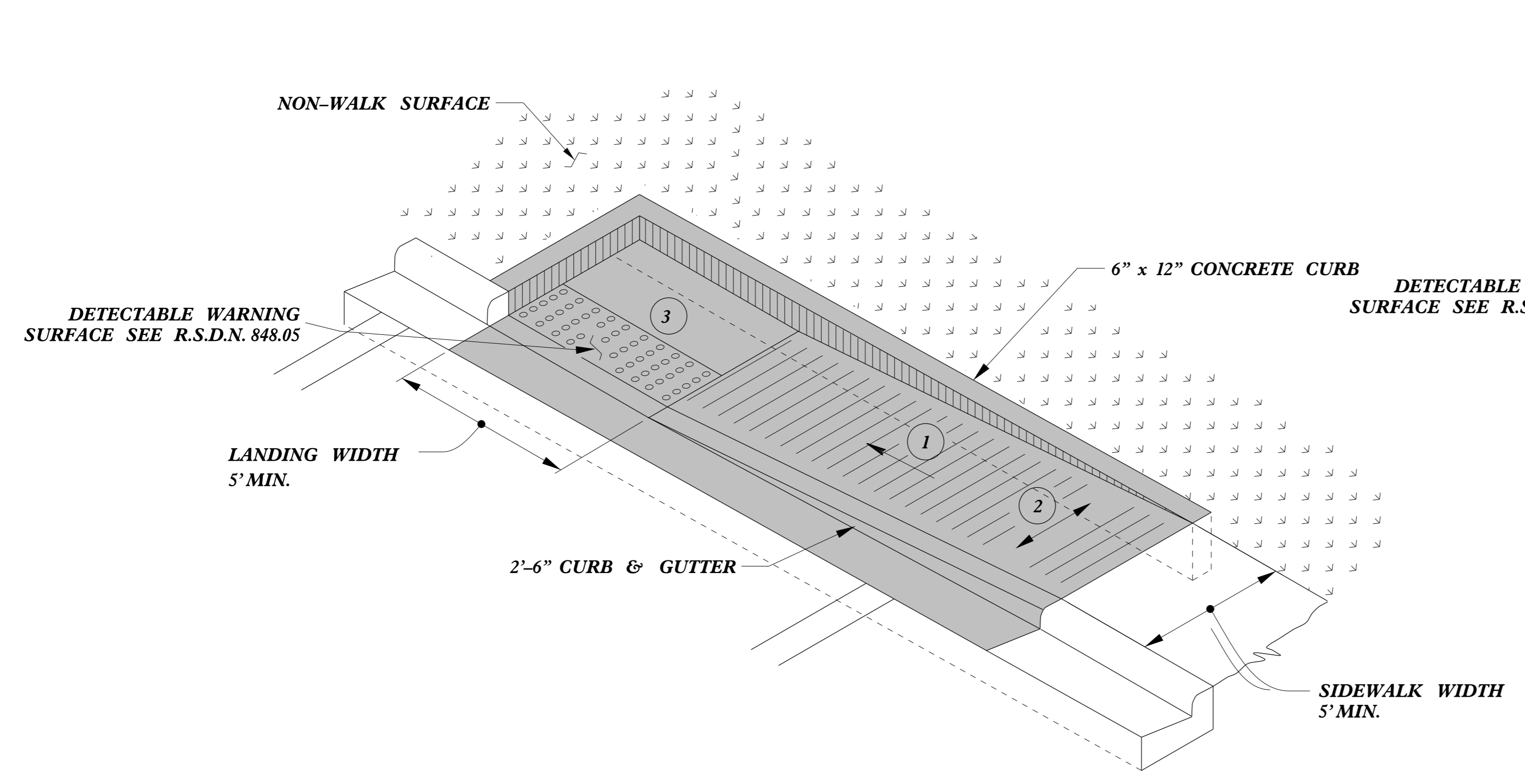
A	Standard Wheelchair Ramp 848.05	Ⓐ
B	Detectable Warning Domes Only	Ⓑ
C	Type 1	Ⓒ
D	Type 1A	Ⓓ
E	Type 1B	Ⓔ
F	Type 2	Ⓕ
G	Type 2A	Ⓖ
H	Type 3	Ⓗ
I	Type 4	Ⓘ
J	Type 4A	Ⓙ
K	Type 5	Ⓚ
L	Median Island curb ramps	Ⓛ
M	Median island with Cut through	Ⓜ
N	Triangular island with Cut through	Ⓝ
O	Additional Sidewalk Work to meet ADA compliance	Ⓞ
P	Special Detail A	Ⓟ



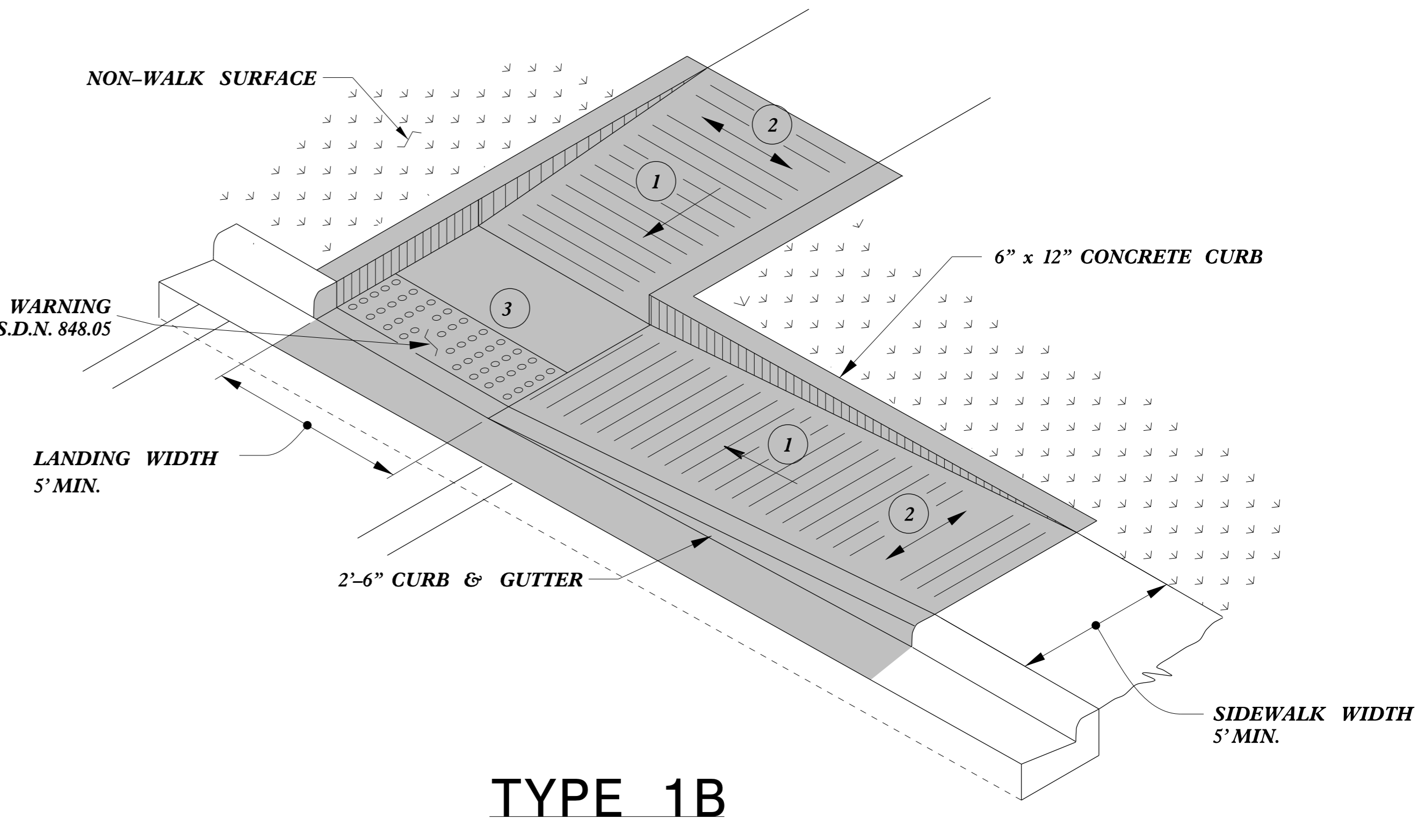
<b>A</b>	<b>Standard Wheelchair Ramp</b> <b>848.05</b>	<b>(A)</b>
<b>B</b>	Detectable Warning Domes Only	<b>(B)</b>
<b>C</b>	Type 1	<b>(C)</b>
<b>D</b>	Type 1A	<b>(D)</b>
<b>E</b>	Type 1B	<b>(E)</b>
<b>F</b>	Type 2	<b>(F)</b>
<b>G</b>	Type 2A	<b>(G)</b>
<b>H</b>	Type 3	<b>(H)</b>
<b>I</b>	Type 4	<b>(I)</b>
<b>J</b>	Type 4A	<b>(J)</b>
<b>K</b>	Type 5	<b>(K)</b>
<b>L</b>	Median Island curb ramps	<b>(L)</b>
<b>M</b>	Median island with Cut through	<b>(M)</b>
<b>N</b>	Triangular island with Cut through	<b>(N)</b>
<b>O</b>	Additional Sidewalk Work to meet ADA compliance	<b>(O)</b>
<b>P</b>	Special Detail A	<b>(P)</b>



5/14/99



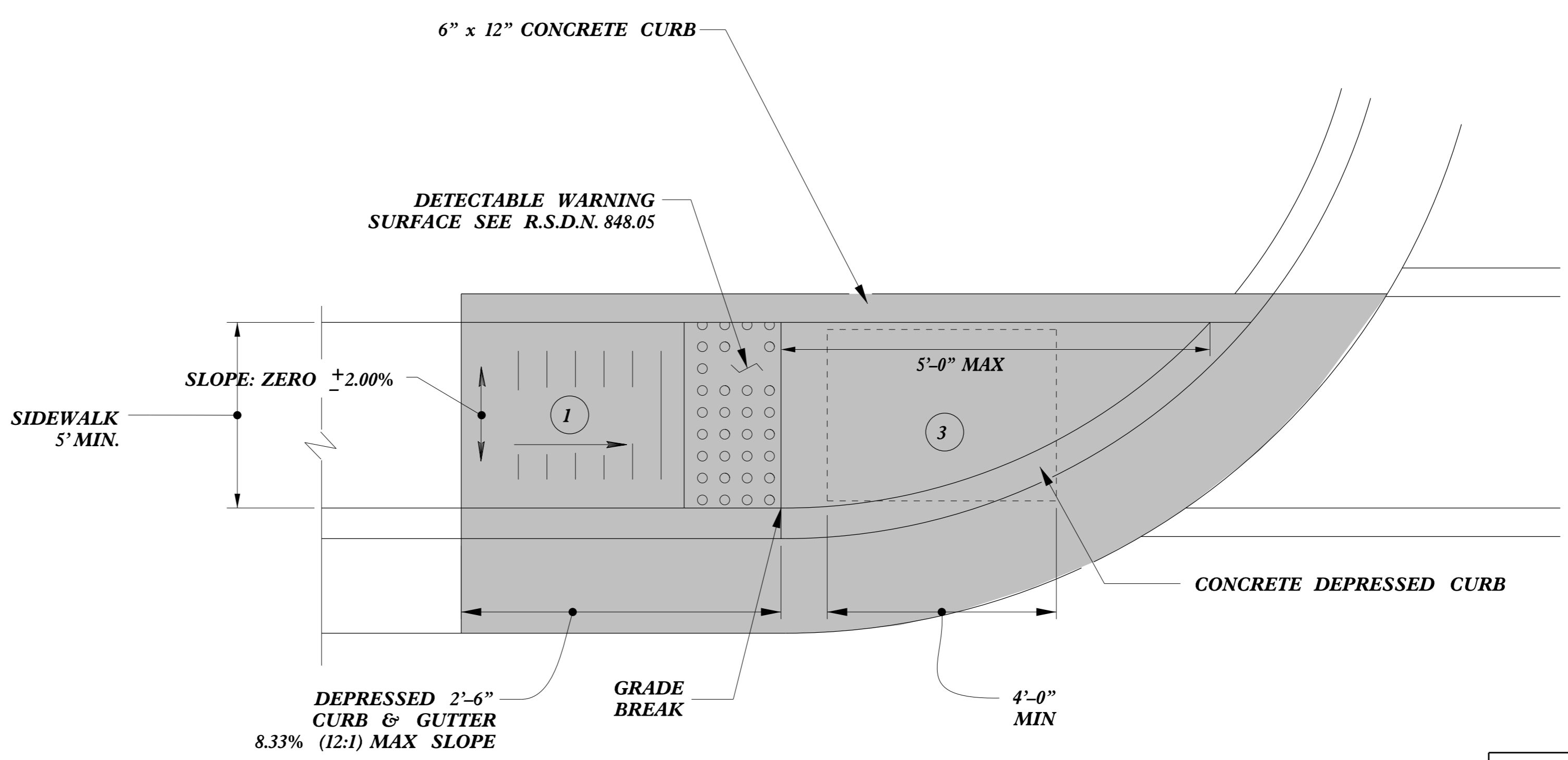
**TYPE 1A**



**TYPE 1B**

**PAY LIMITS FOR 1 CURB RAMP**

- 1 8.33% (12:1) MAX RAMP SLOPE
- 2 CROSS SLOPE: 2.00%
- 3 CURB RAMPS REQUIRE A (4'-0") MINIMUM LANDING WITH A MAXIMUM CROSS SLOPE AND LONGITUDINAL SLOPE OF 2.00% WHERE PEDESTRIANS PERFORM TURNING MANEUVERS. SLOPE TO DRAIN TO CURB.



**TYPE 1**

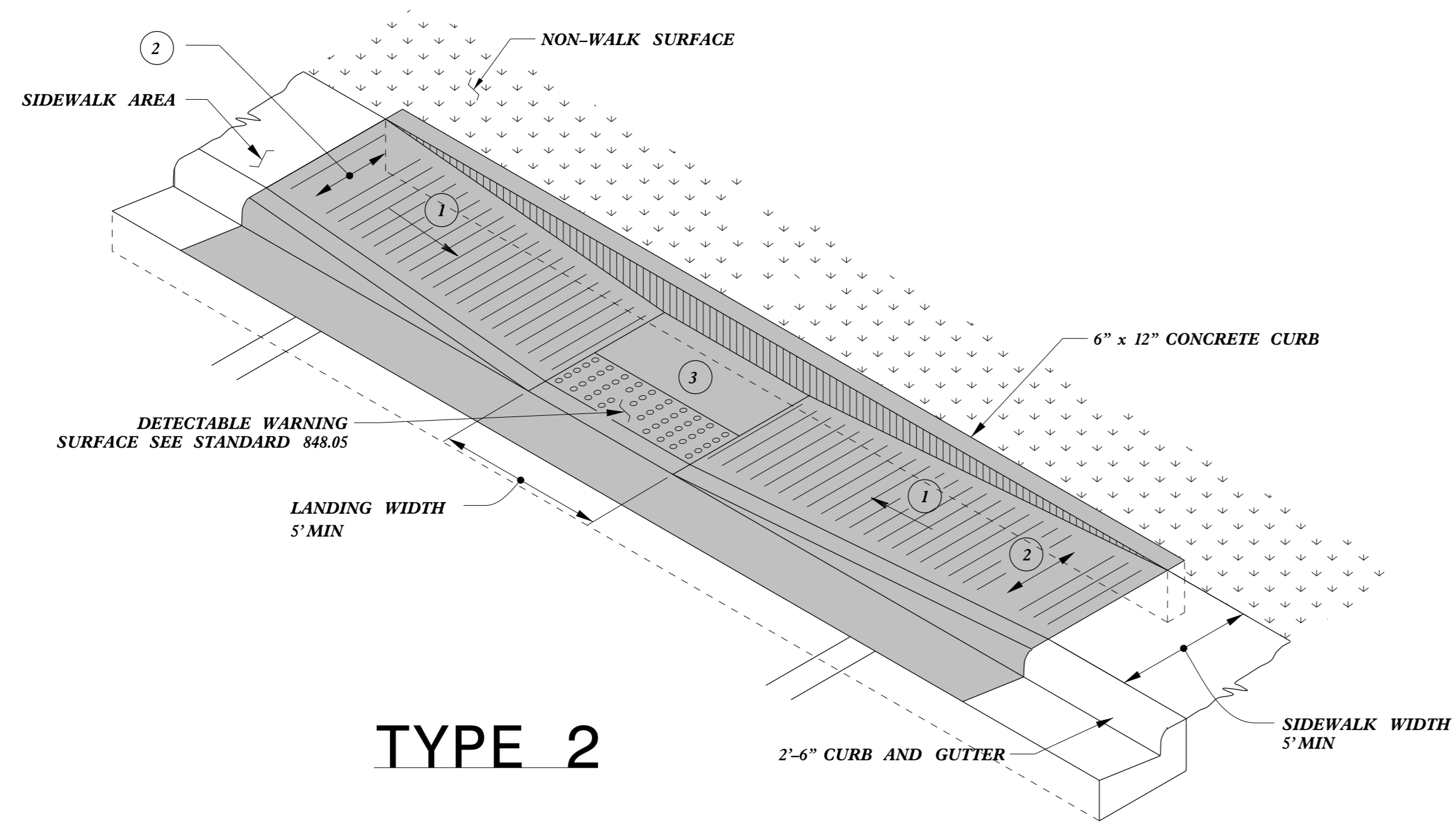


DOCUMENT NOT CONSIDERED FINAL UNLESS ALL SIGNATURES COMPLETED

<b>CONTRACT STANDARDS AND DEVELOPMENT UNIT</b>	
Office 919-707-6950	FAX 919-250-4119
<b>CURB RAMPS</b>	
Directional Ramps	
ORIGINAL BY: J.S. HOWERTON	DATE: 7/7/11
MODIFIED BY:	DATE:
CHECKED BY:	DATE:
FILE SPEC: stds/2012CurbRamp/CurbRampDetails.dgn	

REFER TO ROADWAY STANDARD DRAWING NUMBER 848.05 SHEET 3 OF 3 FOR ALL RAMP NOTES

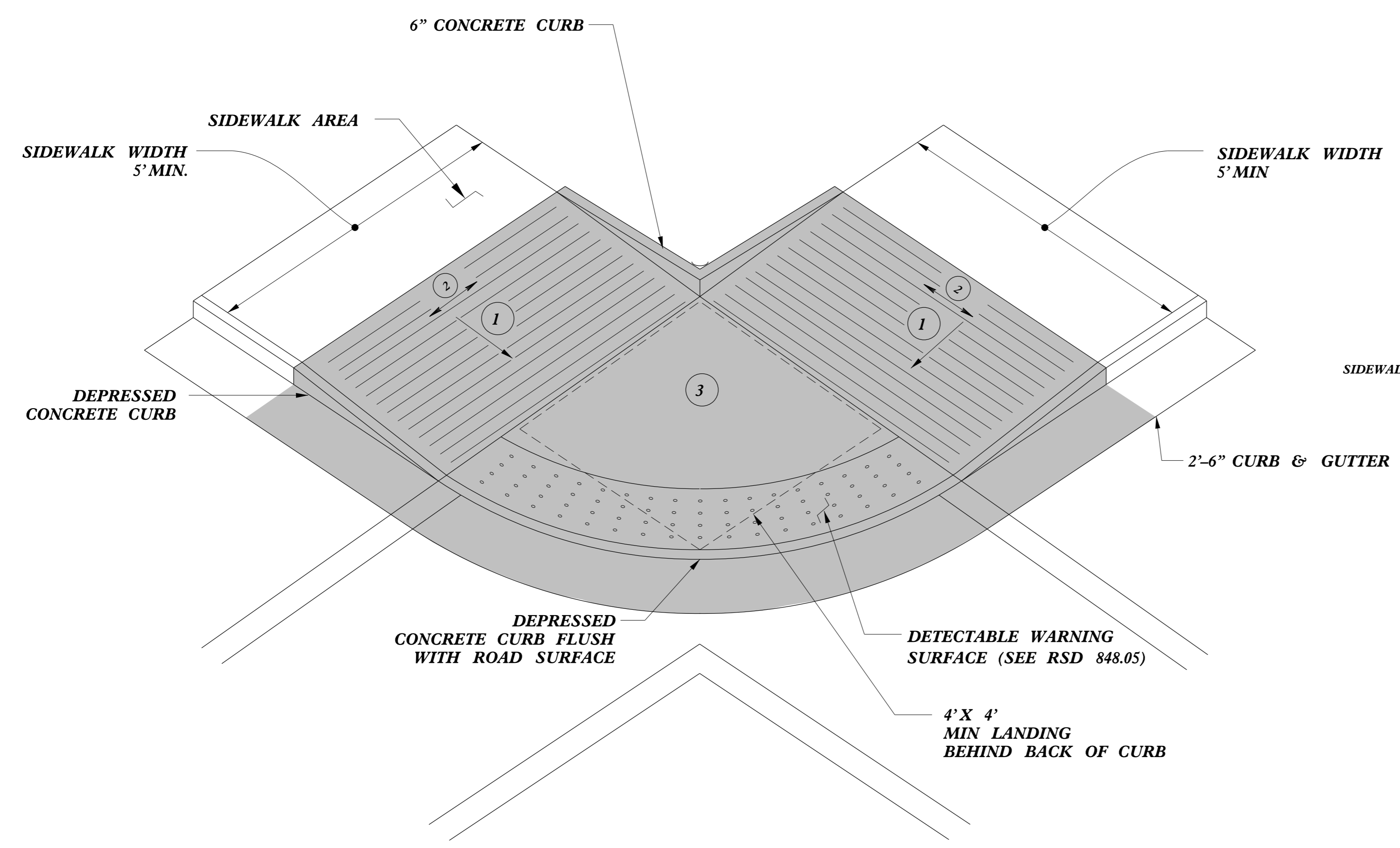
C:\P\2011\20110514\20110514.dwg  
 USER: JSH  
 DATE: 5/14/11  
 TIME: 10:00 AM



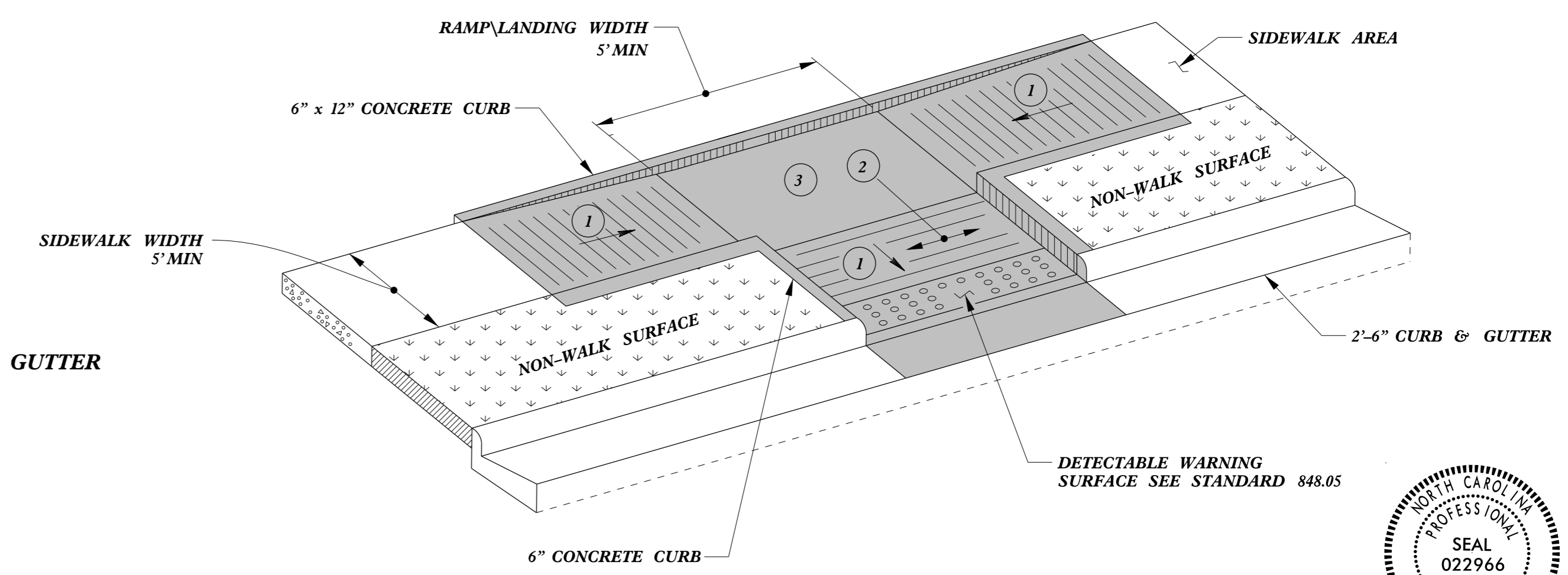
**TYPE 2**

**PAY LIMITS FOR 1 CURB RAMP**

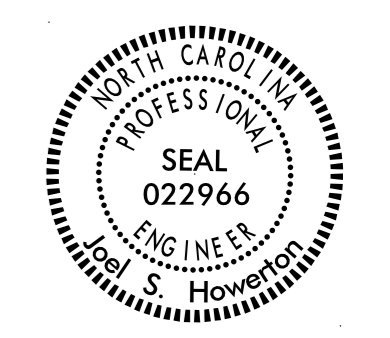
- 1 8.33% (12:1) MAX RAMP SLOPE
- 2 CROSS SLOPE: 2.00%
- 3 CURB RAMPS REQUIRE A (4'-0") MINIMUM LANDING WITH A MAXIMUM CROSS SLOPE AND LONGITUDINAL SLOPE OF 2.00% WHERE PEDESTRIANS PERFORM TURNING MANEUVERS. SLOPE TO DRAIN TO CURB.



**TYPE 2A**



**TYPE 3**

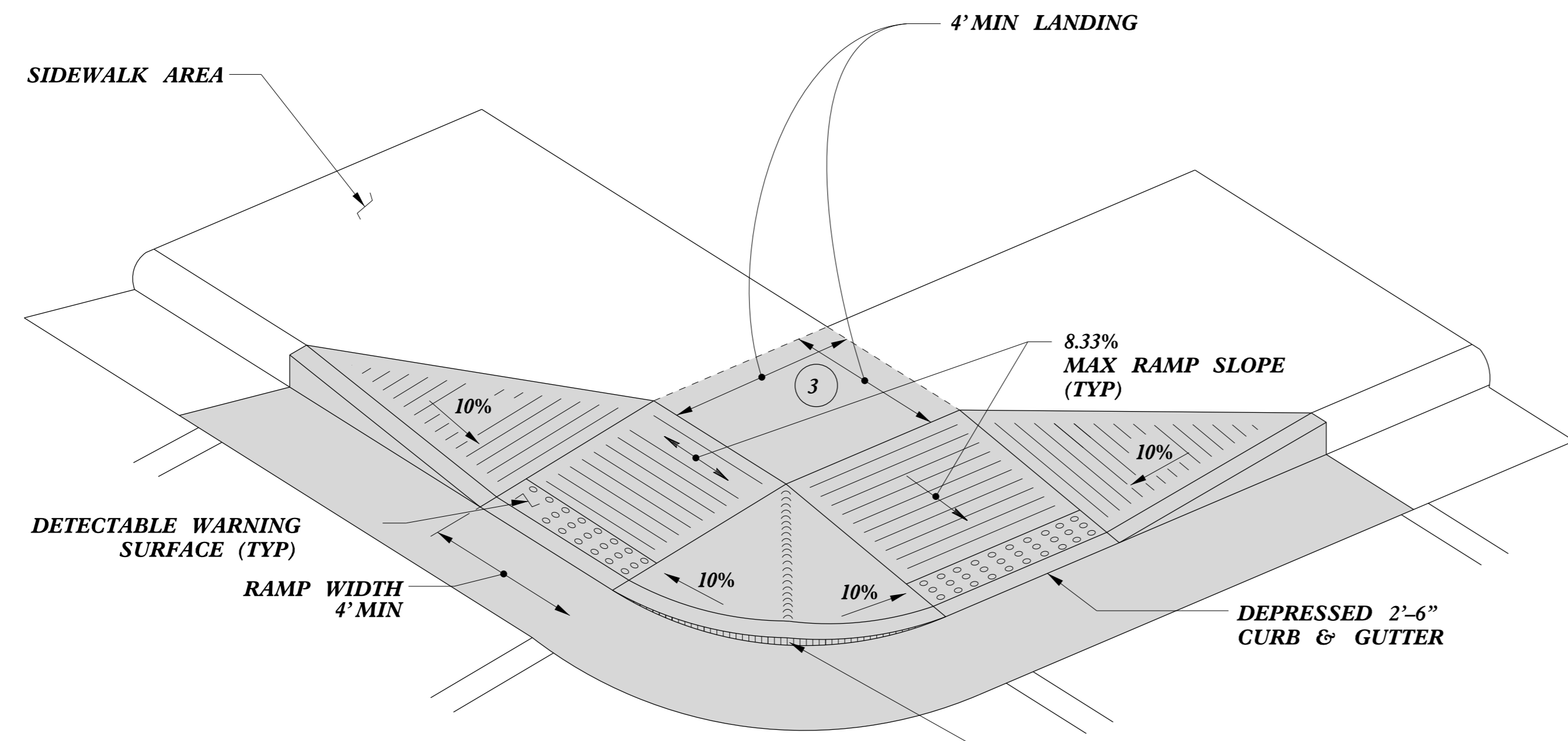


DOCUMENT NOT CONSIDERED FINAL UNLESS ALL SIGNATURES COMPLETED

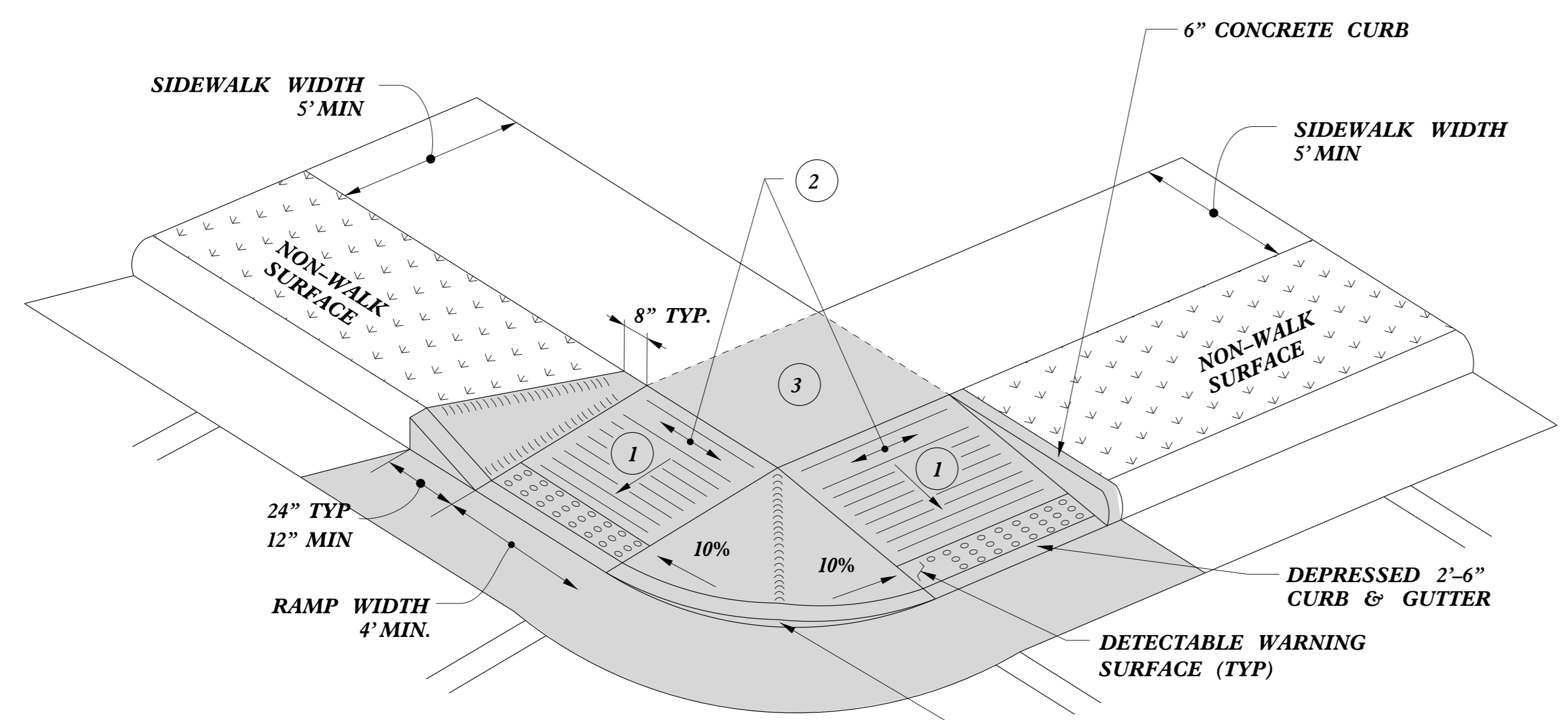
<b>CONTRACT STANDARDS AND DEVELOPMENT UNIT</b>	
Office 919-707-6950	FAX 919-250-4119
<b>CURB RAMPS</b>	
Parallel Ramps	
ORIGINAL BY: J.S. HOWERTON	DATE: 7/7/11
MODIFIED BY:	DATE:
CHECKED BY:	DATE:
FILE SPEC. :stds/2012CurbRamp/CurbRampDetails.dgn	

REFER TO ROADWAY STANDARD DRAWING NUMBER 848.05 SHEET 3 OF 3 FOR ALL RAMP NOTES

5/14/99  
C:\ME\DWG\CON\CON\USER\NAME.DWG

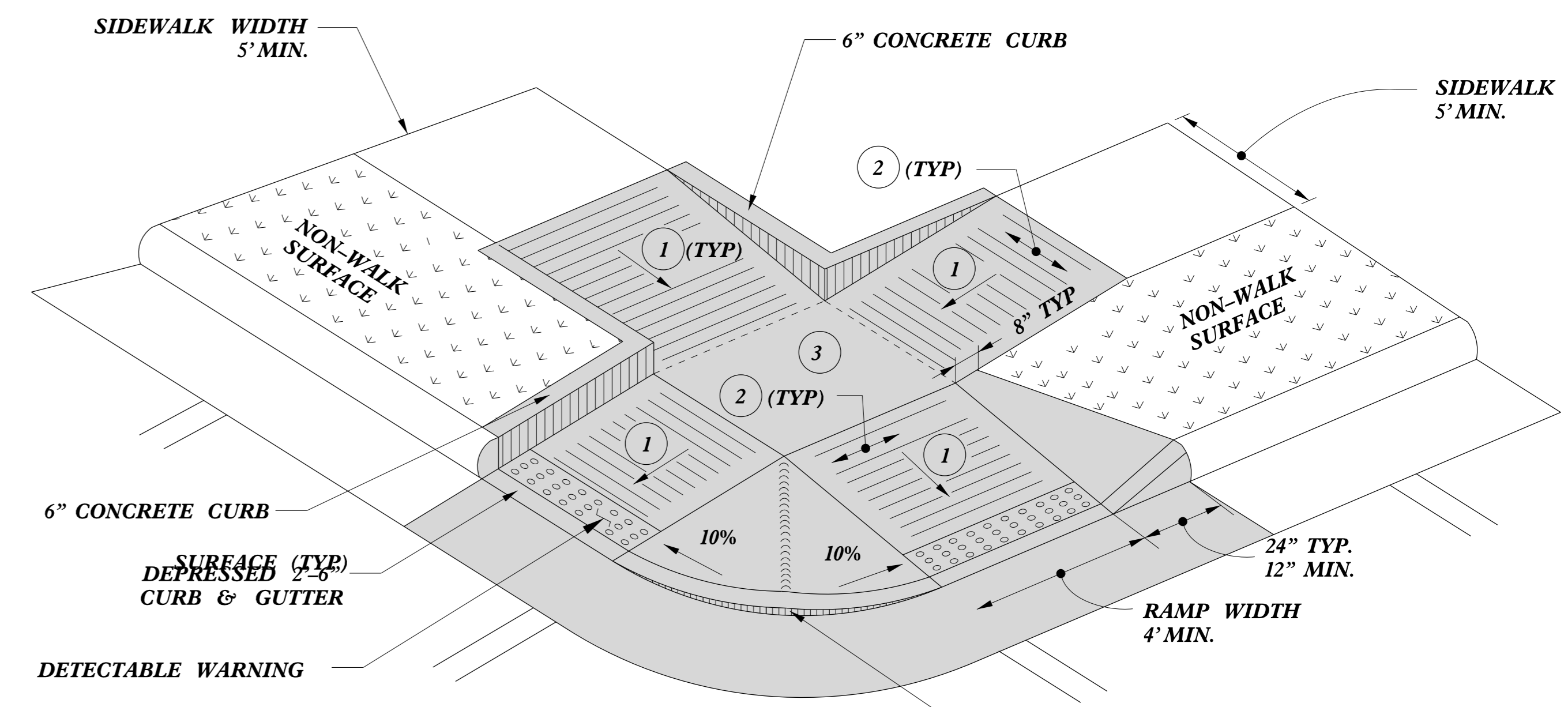


**TYPE 4**



**TYPE 4A**

**PAY LIMITS FOR 2 CURB RAMPS**



**TYPE 5**

- 1 8.33% (12:1) MAX RAMP SLOPE
- 2 CROSS SLOPE: 2.00%
- 3 CURB RAMPS REQUIRE A (4'-0") MINIMUM LANDING WITH A MAXIMUM CROSS SLOPE AND LONGITUDINAL SLOPE OF 2.00% WHERE PEDESTRIANS PERFORM TURNING MANEUVERS. SLOPE TO DRAIN TO CURB.



DOCUMENT NOT CONSIDERED FINAL UNLESS ALL SIGNATURES COMPLETED

<b>CONTRACT STANDARDS AND DEVELOPMENT UNIT</b>	
Office 919-707-6950	FAX 919-250-4119
<b>CURB RAMPS</b>	
Shared Landing	
ORIGINAL BY: J.S. HOWERTON	DATE: 7/7/11
MODIFIED BY:	DATE:
CHECKED BY:	DATE:
FILE SPEC: stds/2012CurbRamp/CurbRampDetails.dgn	

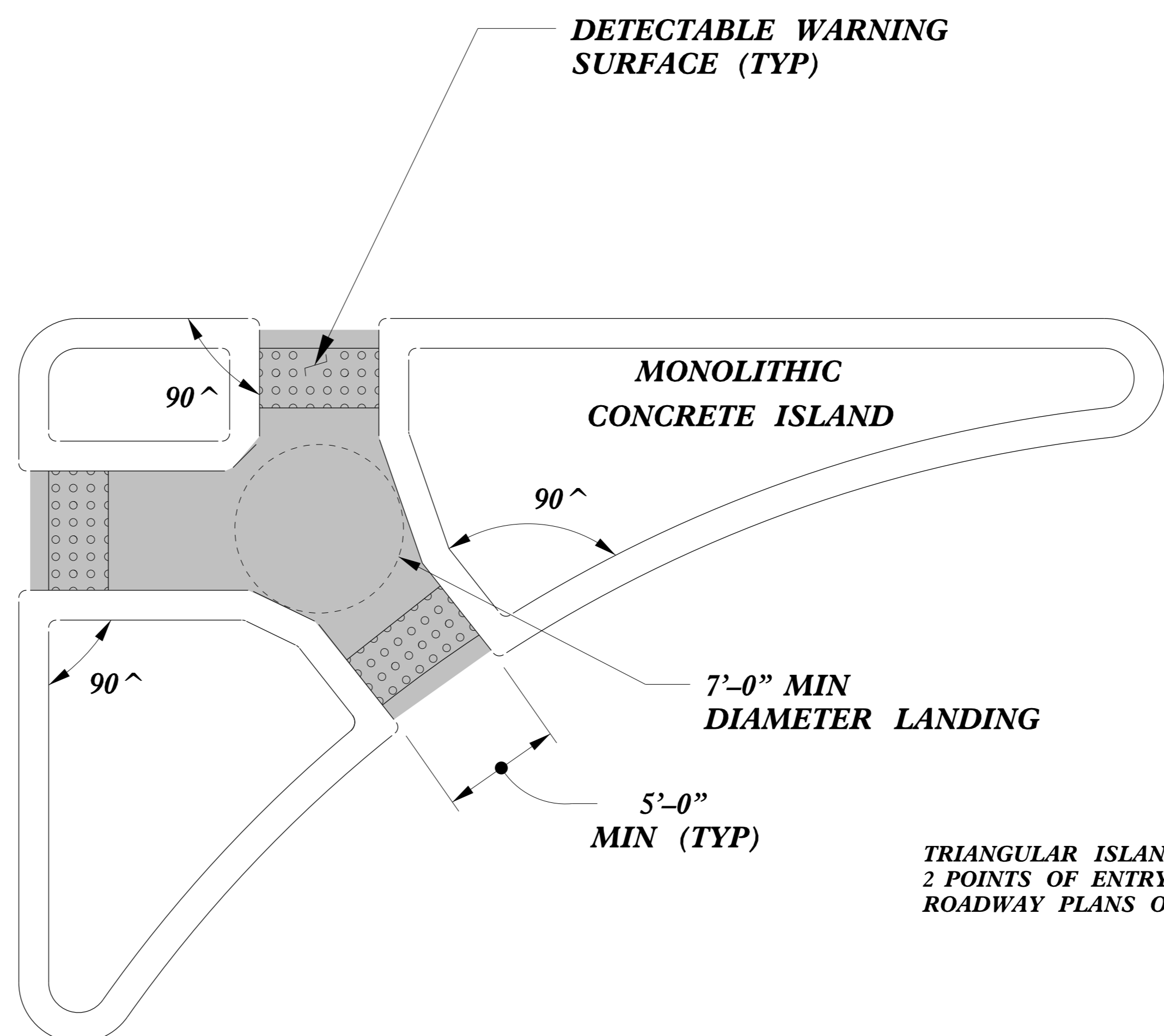
REFER TO ROADWAY STANDARD DRAWING NUMBER 848.05 SHEET 3 OF 3 FOR ALL RAMP NOTES

5/14/99  
C:\TIME\STDS\CON\STDS\USER\NAME



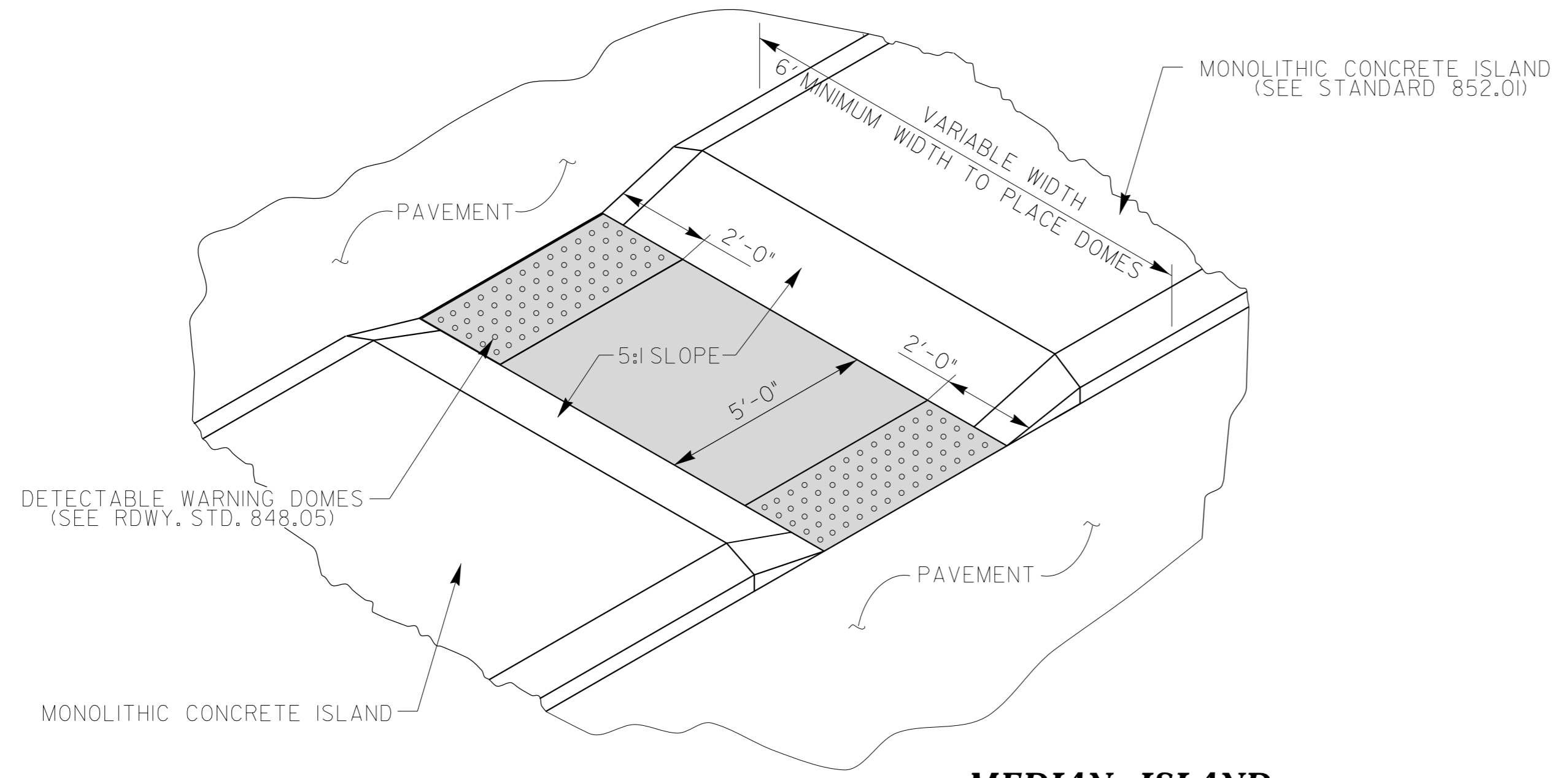
5/14/99

PAY LIMITS FOR 2 OR 3 CURB RAMPS (CALCULATE BASED ON NUMBER OF SETS OF TRUNCATED DOMES)

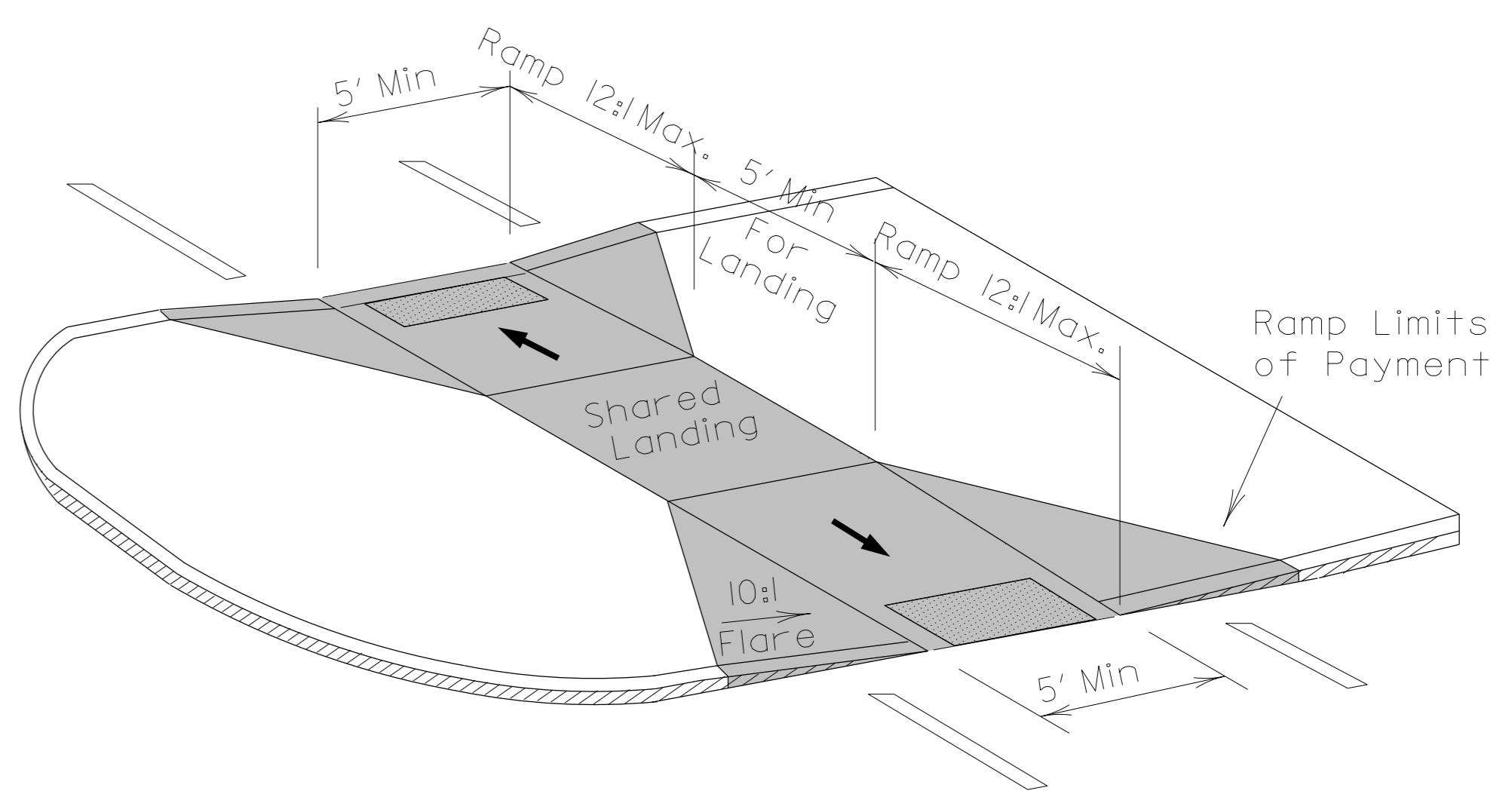


TRIANGULAR ISLANDS MAY BE CONSTRUCTED WITH ONLY 2 POINTS OF ENTRY AND EXIT AS SHOWN IN THE ROADWAY PLANS OR AS DIRECTED BY THE ENGINEER.

**TRIANGULAR ISLAND WITH CUT THROUGH**



**MEDIAN ISLAND WITH CUT THROUGH**



**MEDIAN ISLAND CURB RAMPS**



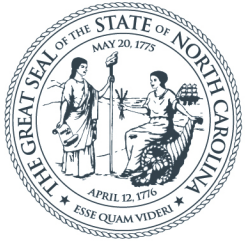
DOCUMENT NOT CONSIDERED FINAL UNLESS ALL SIGNATURES COMPLETED

**CONTRACT STANDARDS AND DEVELOPMENT UNIT**  
Office 919-707-6950 FAX 919-250-4119

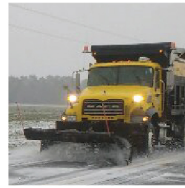
**CURB RAMPS**  
Median or Turn Lane Islands

ORIGINAL BY: J.S. HOWERTON DATE: 7/7/11  
MODIFIED BY: DATE:  
CHECKED BY: DATE:  
FILE SPEC.: stds/2012CurbRamp/CurbRampDetails.dgn

\$\$\$ TIME \$\$\$  
\$\$\$ CURB RAMPS \$\$\$  
\$\$\$ DETAIL CURB RAMPS \$\$\$  
\$\$\$ USER: J.S.HOWERTON \$\$\$



**NORTH CAROLINA**  
Department of Transportation



# R-5782MB Side Walk Ramps Project

Jeff Cabaniss, PE

2021

Town of Farmville

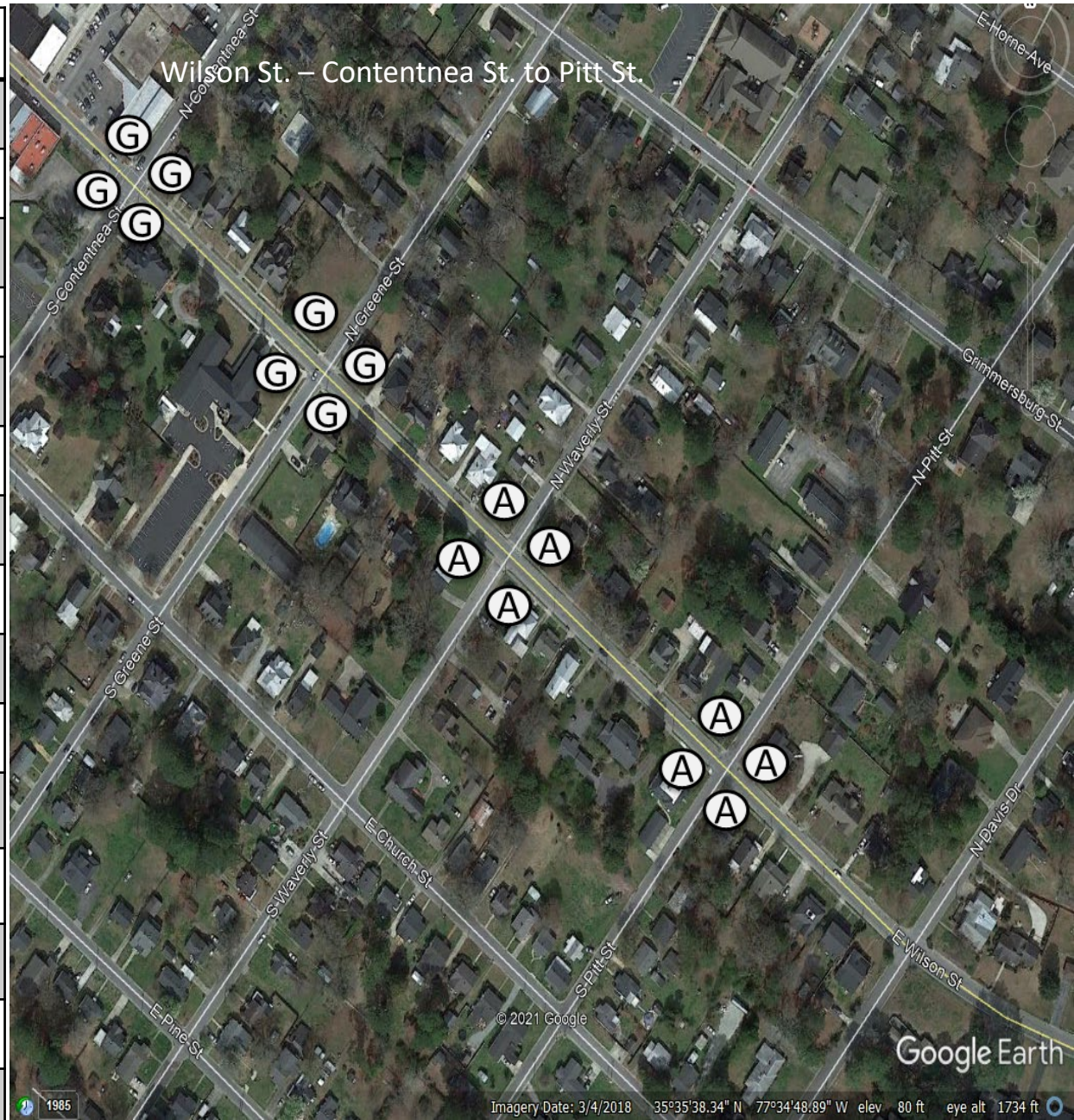
<b>A</b>	<b>Standard Wheelchair Ramp</b> <b>848.05</b>	<b>(A)</b>
<b>B</b>	Detectable Warning Domes Only	<b>(B)</b>
<b>C</b>	Type 1	<b>(C)</b>
<b>D</b>	Type 1A	<b>(D)</b>
<b>E</b>	Type 1B	<b>(E)</b>
<b>F</b>	Type 2	<b>(F)</b>
<b>G</b>	Type 2A	<b>(G)</b>
<b>H</b>	Type 3	<b>(H)</b>
<b>I</b>	Type 4	<b>(I)</b>
<b>J</b>	Type 4A	<b>(J)</b>
<b>K</b>	Type 5	<b>(K)</b>
<b>L</b>	Median Island curb ramps	<b>(L)</b>
<b>M</b>	Median island with Cut through	<b>(M)</b>
<b>N</b>	Triangular island with Cut through	<b>(N)</b>
<b>O</b>	Special Detail A	<b>(O)</b>
<b>P</b>	Special Detail B	<b>(P)</b>



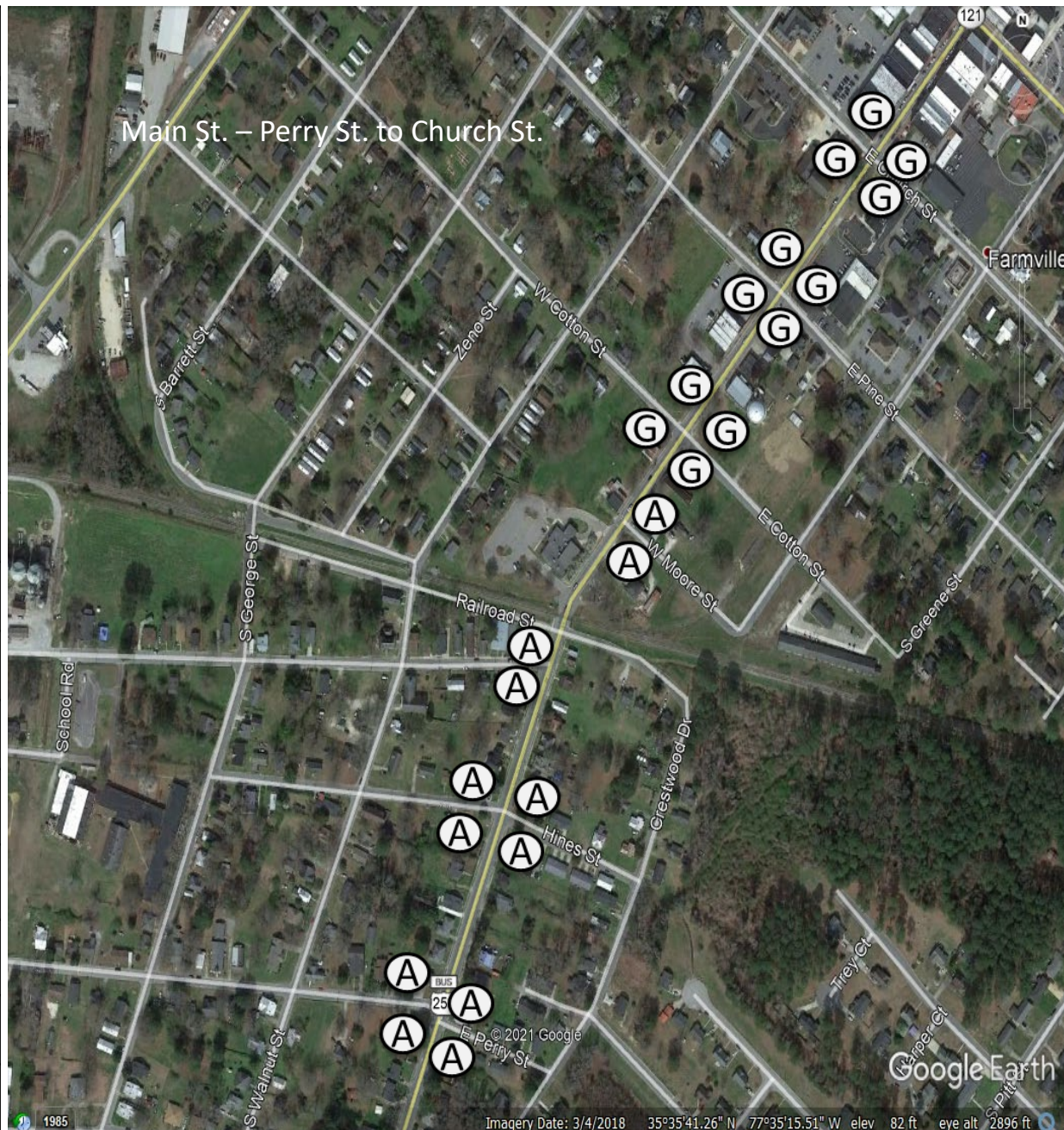
A	Standard Wheelchair Ramp 848.05	Ⓐ
B	Detectable Warning Domes Only	Ⓑ
C	Type 1	Ⓒ
D	Type 1A	Ⓓ
E	Type 1B	Ⓔ
F	Type 2	Ⓕ
G	Type 2A	Ⓖ
H	Type 3	Ⓗ
I	Type 4	Ⓘ
J	Type 4A	Ⓙ
K	Type 5	Ⓚ
L	Median Island curb ramps	Ⓛ
M	Median island with Cut through	Ⓜ
N	Triangular island with Cut through	Ⓝ
O	Special Detail A	Ⓞ
P	Special Detail B	Ⓟ



<b>A</b>	<b>Standard Wheelchair Ramp</b> <b>848.05</b>	<b>(A)</b>
<b>B</b>	Detectable Warning Domes Only	<b>(B)</b>
<b>C</b>	Type 1	<b>(C)</b>
<b>D</b>	Type 1A	<b>(D)</b>
<b>E</b>	Type 1B	<b>(E)</b>
<b>F</b>	Type 2	<b>(F)</b>
<b>G</b>	Type 2A	<b>(G)</b>
<b>H</b>	Type 3	<b>(H)</b>
<b>I</b>	Type 4	<b>(I)</b>
<b>J</b>	Type 4A	<b>(J)</b>
<b>K</b>	Type 5	<b>(K)</b>
<b>L</b>	Median Island curb ramps	<b>(L)</b>
<b>M</b>	Median island with Cut through	<b>(M)</b>
<b>N</b>	Triangular island with Cut through	<b>(N)</b>
<b>O</b>	Special Detail A	<b>(O)</b>
<b>P</b>	Special Detail B	<b>(P)</b>



A	Standard Wheelchair Ramp 848.05	(A)
B	Detectable Warning Domes Only	(B)
C	Type 1	(C)
D	Type 1A	(D)
E	Type 1B	(E)
F	Type 2	(F)
G	Type 2A	(G)
H	Type 3	(H)
I	Type 4	(I)
J	Type 4A	(J)
K	Type 5	(K)
L	Median Island curb ramps	(L)
M	Median island with Cut through	(M)
N	Triangular island with Cut through	(N)
O	Special Detail A	(O)
P	Special Detail B	(P)



<b>A</b>	<b>Standard Wheelchair Ramp</b> <b>848.05</b>	<b>(A)</b>
<b>B</b>	Detectable Warning Domes Only	<b>(B)</b>
<b>C</b>	Type 1	<b>(C)</b>
<b>D</b>	Type 1A	<b>(D)</b>
<b>E</b>	Type 1B	<b>(E)</b>
<b>F</b>	Type 2	<b>(F)</b>
<b>G</b>	Type 2A	<b>(G)</b>
<b>H</b>	Type 3	<b>(H)</b>
<b>I</b>	Type 4	<b>(I)</b>
<b>J</b>	Type 4A	<b>(J)</b>
<b>K</b>	Type 5	<b>(K)</b>
<b>L</b>	Median Island curb ramps	<b>(L)</b>
<b>M</b>	Median island with Cut through	<b>(M)</b>
<b>N</b>	Triangular island with Cut through	<b>(N)</b>
<b>O</b>	Special Detail A	<b>(O)</b>
<b>P</b>	Special Detail B	<b>(P)</b>

