

STATE	PLANS	PRIORITY	AMENDMENT NO.	SHEET	TOTAL
N.C.	B-5419	(46-480.1.1)		1	6

**STATE OF NORTH CAROLINA**  
**DEPARTMENT OF TRANSPORTATION**  
**DIVISION OF HIGHWAYS**  
**GEOTECHNICAL ENGINEERING UNIT**

**STRUCTURE**  
**SUBSURFACE INVESTIGATION**

<b>CONTENTS</b>	
<b>SHEET</b>	<b>DESCRIPTION</b>
1	TITLE SHEET
2	LEGEND
3	SITE PLAN
4	PROFILE
5-6	BORE LOGS

PROJ. REFERENCE NO. 45480.1.1 (B-5419) F.A. PROJ. BRSTP-0033(10)  
 COUNTY PITT  
 PROJECT DESCRIPTION BRIDGE NO. 7 ON NC 33 OVER CHEEKS  
MILL CREEK AT -L- STA. 16+29.5

**CAUTION NOTICE**

THE SUBSURFACE INFORMATION AND THE SUBSURFACE INVESTIGATION ON WHICH IT IS BASED WERE MADE FOR THE PURPOSE OF STUDY, PLANNING, AND DESIGN AND NOT FOR CONSTRUCTION OR FAT PURPOSES. THE VARIOUS FIELD BORING LOGS, ROCK CORES, AND SOIL TEST DATA AVAILABLE MAY BE REVIEWED OR REPEATED IN WHOLE OR IN PART BY CONTACTING THE N. C. DEPARTMENT OF TRANSPORTATION, GEOTECHNICAL ENGINEERING UNIT AT 1001 WEST-GARDEN, RENOIR, N. C. 28650. THE SUBSURFACE PLANS AND REPORTS, AND THE TEST BORING LOGS, ROCK CORES, AND SOIL TEST DATA ARE PART OF THE CONTRACT.

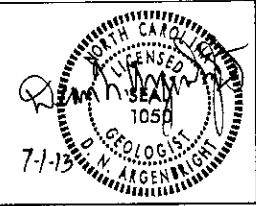
GENERAL SOIL AND ROCK STRATA DESCRIPTIONS AND RELATED BOUNDARIES ARE BASED ON A GEOLOGICAL INTERPRETATION OF ALL AVAILABLE SUBSURFACE DATA AND MAY NOT NECESSARILY REFLECT THE ACTUAL SUBSURFACE CONDITIONS BETWEEN BOPICES OF BETWEEN SAMPLER STRATA WITHIN THE BOREHOLE. THE LABORATORY SAMPLE DATA AND THE IN SITU UNPLACED TEST DATA CAN BE RELIED ON ONLY TO THE DEGREE OF RELIABILITY INDICATED IN THE STANDARD TEST METHOD. THE OCCURRENCE WATER LEVELS OF SOIL AND STONE CONDITIONS INDICATED IN THE SUBSURFACE INVESTIGATION ARE AS RECORDED AT THE TIME OF THE INVESTIGATION. THESE WATER LEVELS OF SOIL AND STONE CONDITIONS MAY VARY CONSIDERABLY WITH THE ACCORDING TO CLIMATIC CONDITIONS INCLUDING TEMPERATURES, PRECIPITATION, AND WIND, AS WELL AS OTHER NON-CLIMATIC FACTORS.

THE BODIES OF CONTRACTOR IS CAUTIONED THAT DETAILS SHOWN ON THE SUBSURFACE PLANS ARE PRELIMINARY ONLY AND IN MANY CASES THE FINAL DESIGN DETAILS ARE DIFFERENT. FOR BORING AND OBSERVATION PURPOSES, REFER TO THE CONSTRUCTION PLANS AND DOCUMENTS FOR FINAL DESIGN INFORMATION OF THIS PROJECT. THE DEPARTMENT DOES NOT WARRANT OR GUARANTEE THE ACCURACY OR COMPLETENESS OF THE INVESTIGATION MADE, NOR THE INTERPRETING JUDGMENT OF THE DEPARTMENT AS TO THE TYPE OF MATERIALS AND CONDITIONS TO BE ENCOUNTERED. THE BODIES OF CONTRACTOR IS OBLIGATED TO MAKE SUCH INDEPENDENT SUBSURFACE INVESTIGATIONS AS HE DEEMS NECESSARY TO SATISFY HIMSELF AS TO CONDITIONS TO BE ENCOUNTERED ON THIS PROJECT. THE CONTRACTOR SHALL WAIVE ANY CLAIM FOR ADDITIONAL COMPENSATION OR FOR AN EXTENSION OF TIME FOR ANY DELAYS RESULTING FROM THE ACTUAL CONDITIONS ENCOUNTERED AT THE SITE DIFFERING FROM THOSE INDICATED IN THE SUBSURFACE INFORMATION.

**PROJECT: 45480.1.1 ID: B-5419**

PERSONNEL  
C.M. WILKE  
R.E. SMITH  
D.G. PINKER

INVESTIGATED BY D.N. ARGENBRIGHT  
 CHECKED BY D.N. ARGENBRIGHT  
 SUBMITTED BY D.N. ARGENBRIGHT  
 DATE JULY 2013



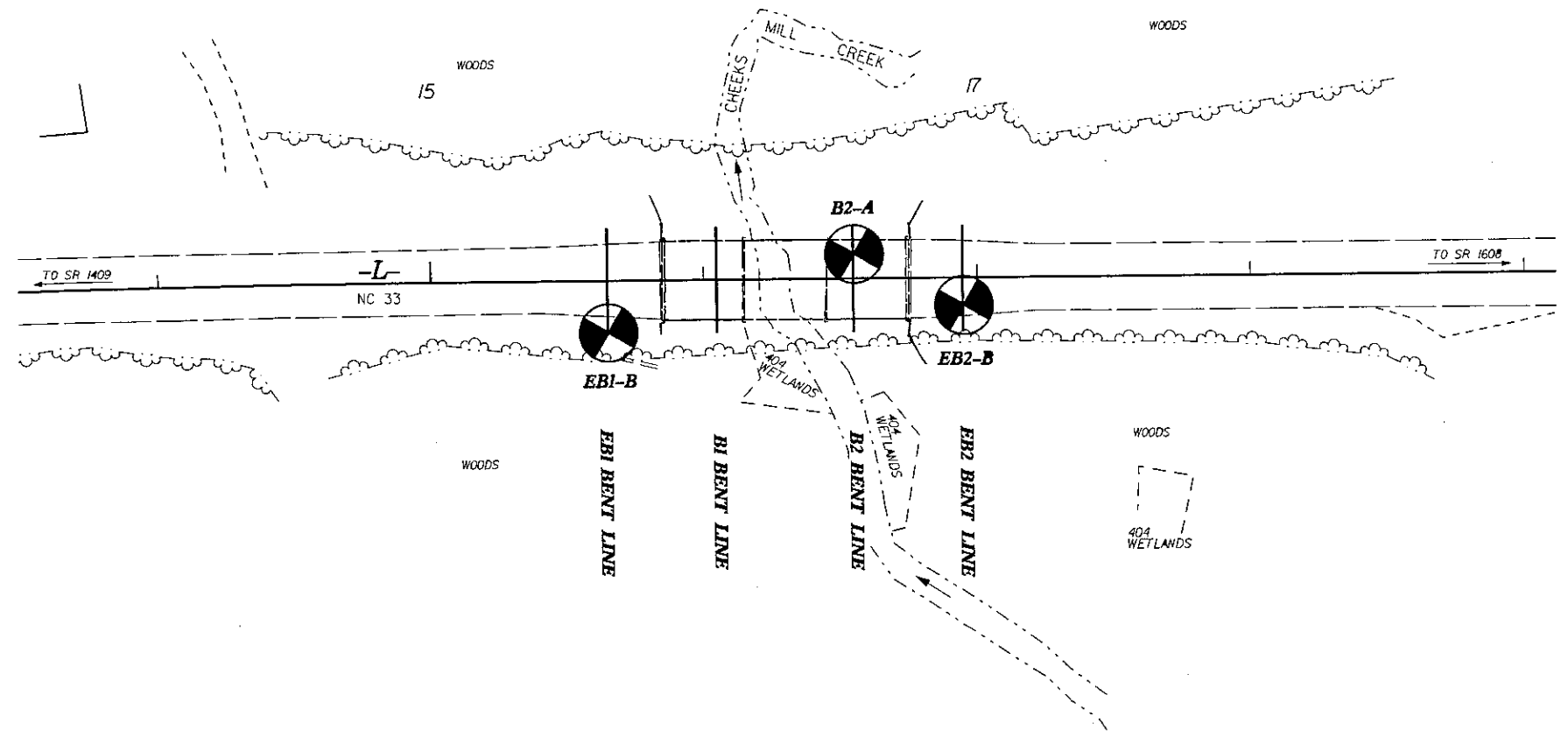
DRAWN BY: T.I. WALKER

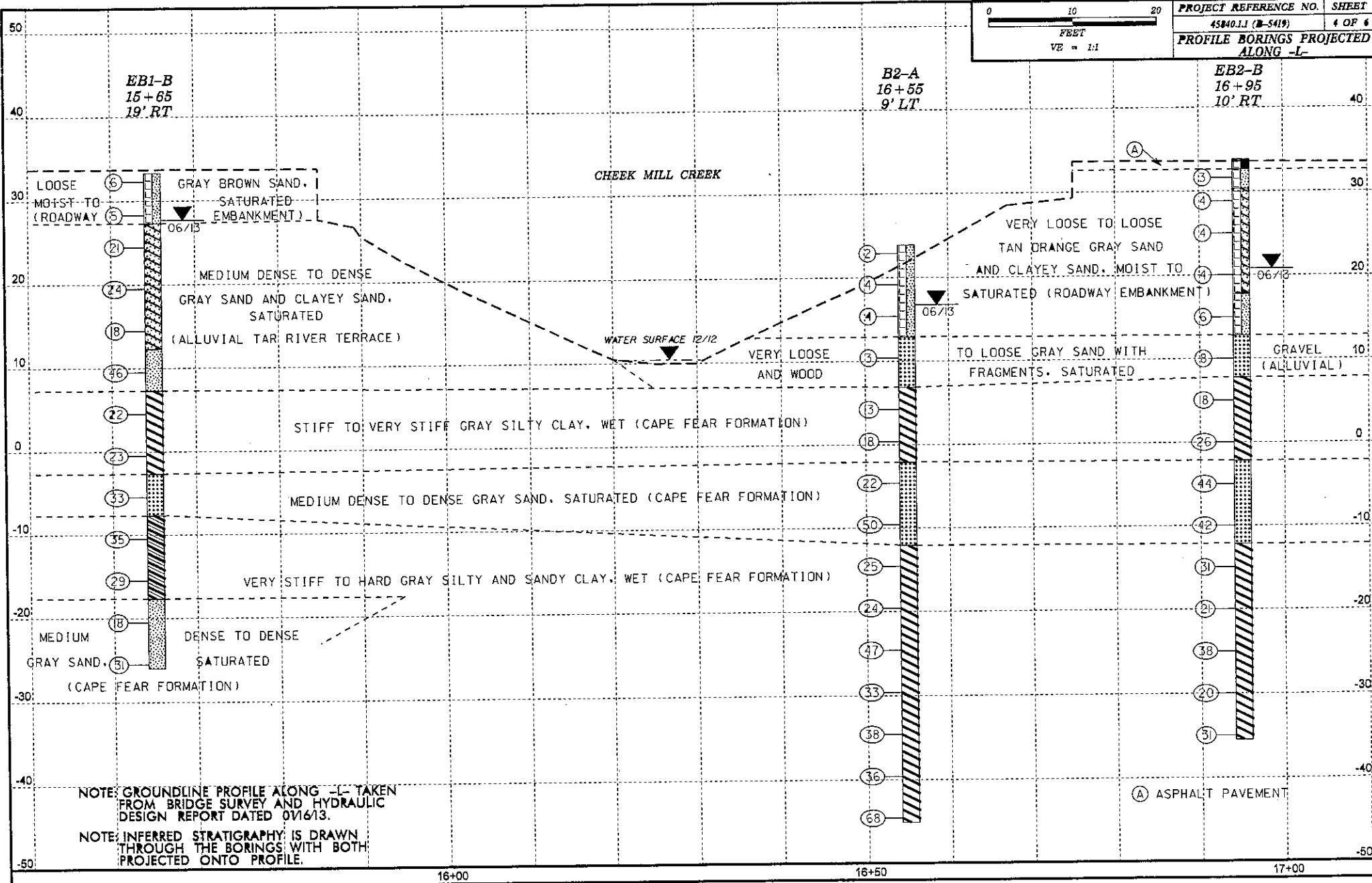
NOTE - THE INFORMATION CONTAINED HEREIN IS NOT IMPLIED OR GUARANTEED BY THE N. C. DEPARTMENT OF TRANSPORTATION AS BEING ACCURATE NOR IS IT CONSIDERED TO BE PART OF THE PLANS, SPECIFICATIONS, OR CONTRACT FOR THE PROJECT.

NOTE - BY HAVING REQUESTED THIS INFORMATION THE CONTRACTOR SPECIFICALLY WAIVES ANY CLAIMS FOR INCREASED COMPENSATION OR EXTENSION OF TIME BASED ON DIFFERENCES BETWEEN THE CONDITIONS INDICATED HEREIN AND THE ACTUAL CONDITIONS AT THE PROJECT SITE.



SKEW = 90°





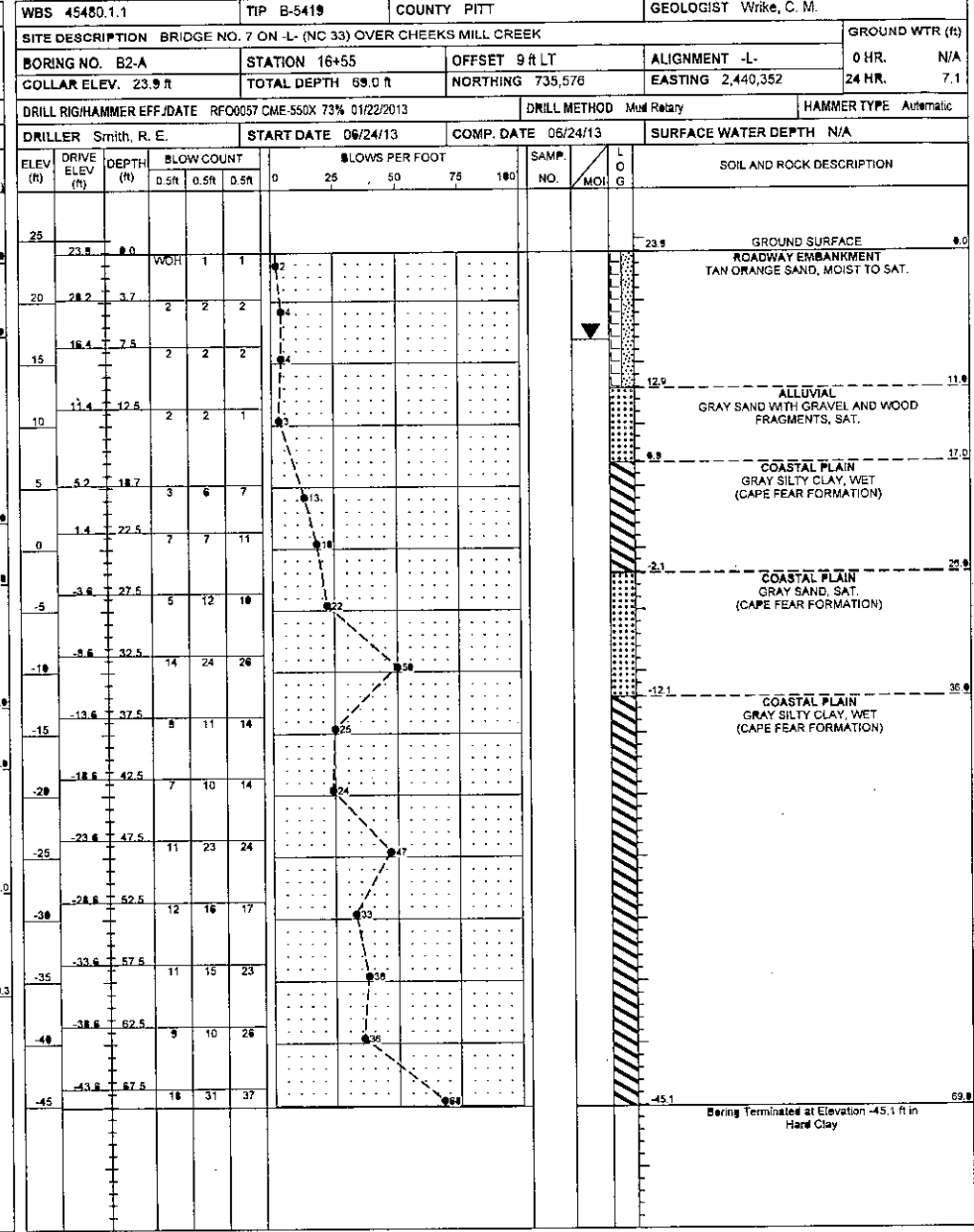
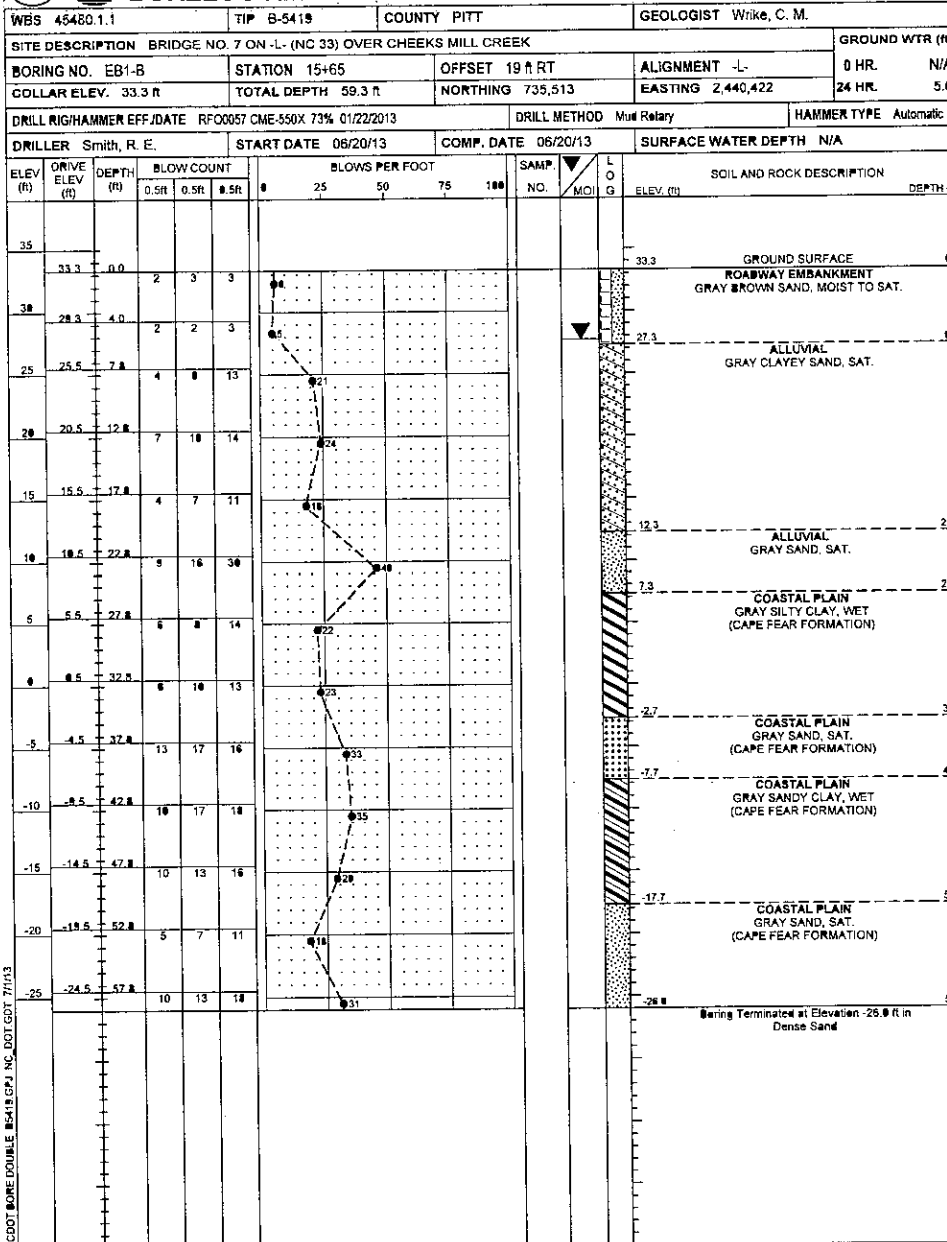
16+00

16+50

17+00



**NCDOT GEOTECHNICAL ENGINEERING UNIT**  
**BORELOG REPORT**



NCDOT BORE DOUBLE B5419.GPJ NC\_DOT\_GST 7/1/13

