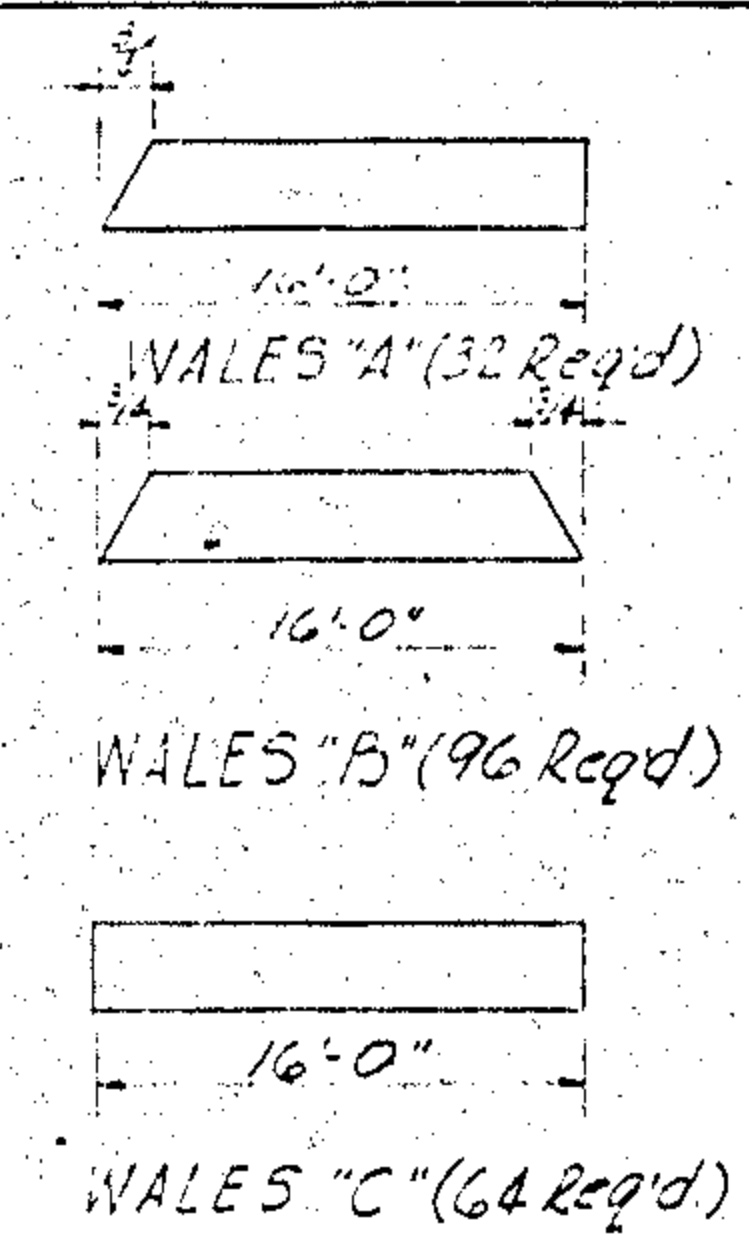


CUTTING DIAGRAMS FOR WALES



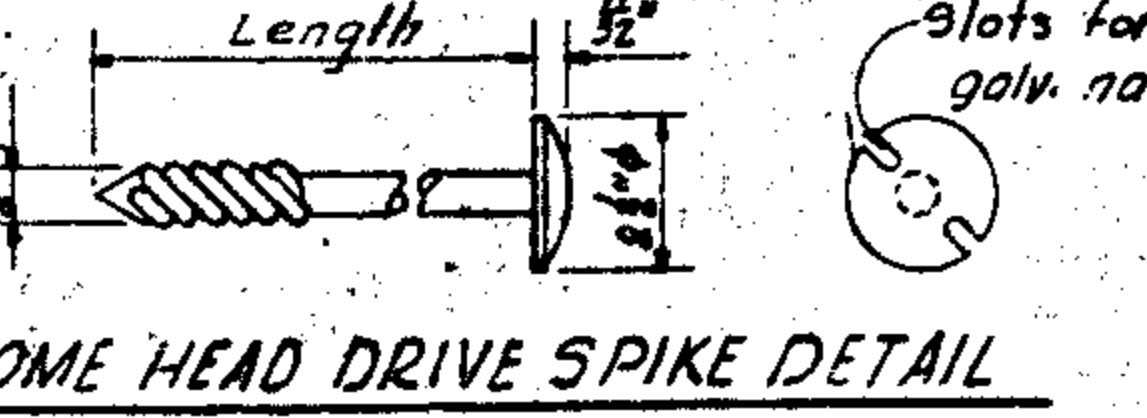
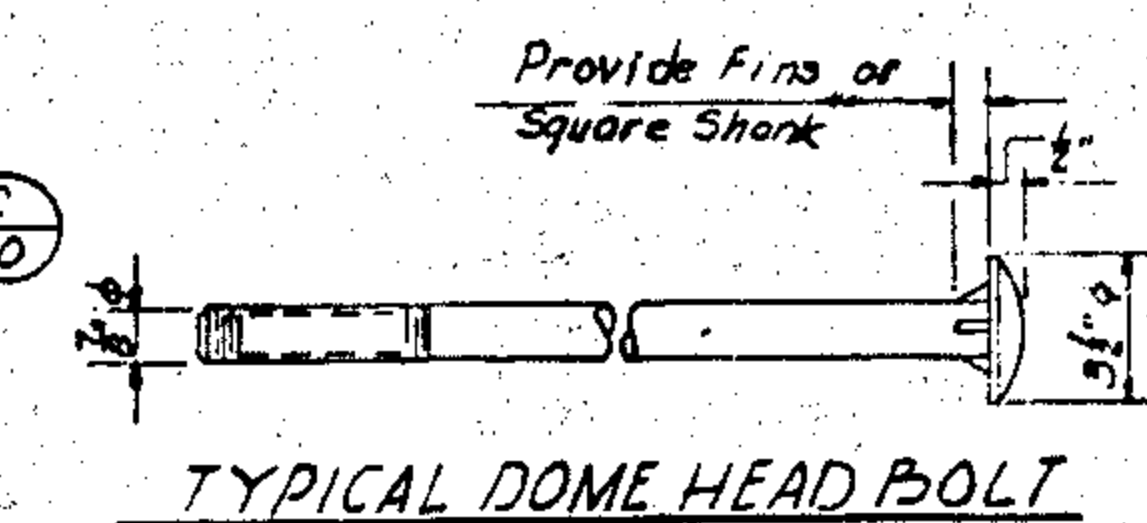
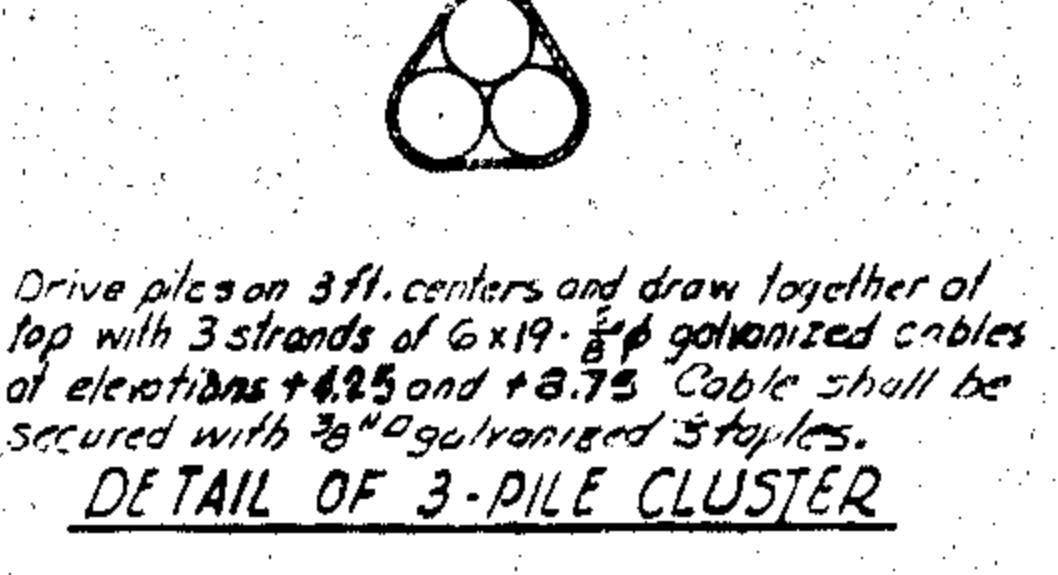
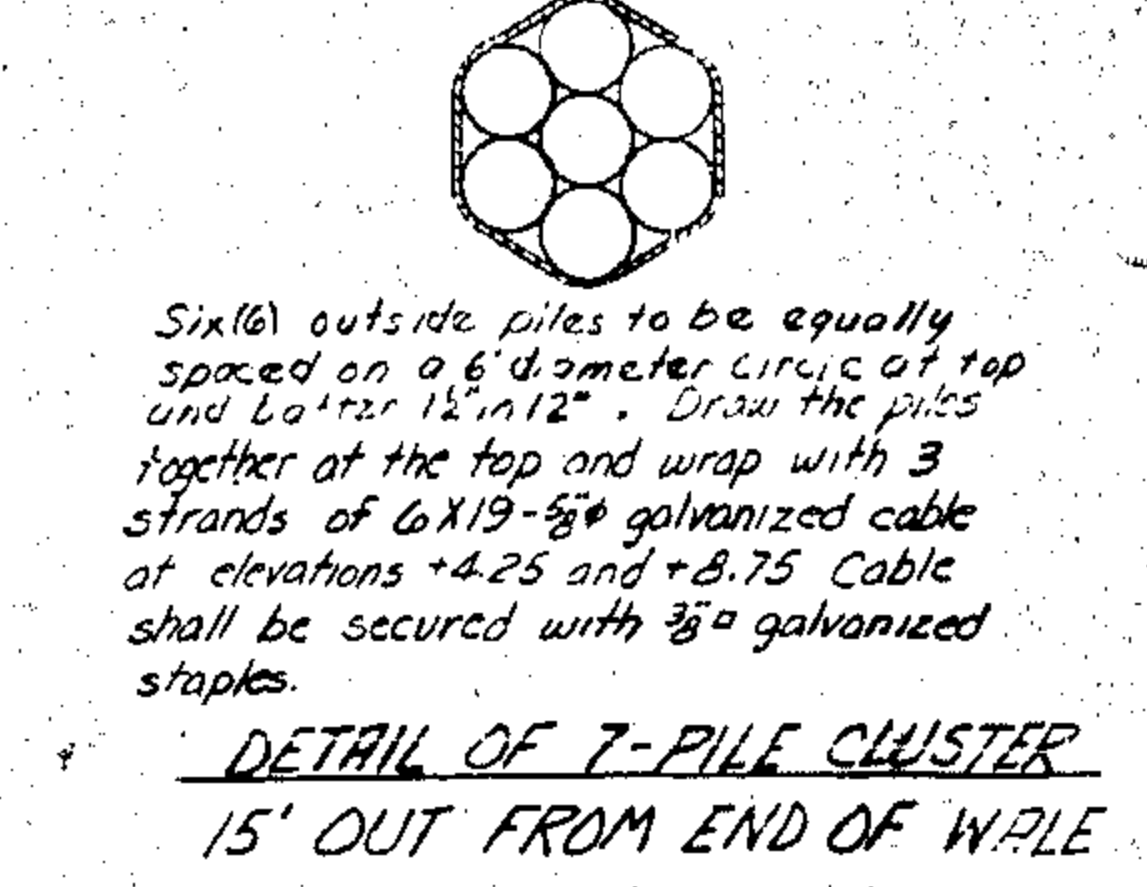
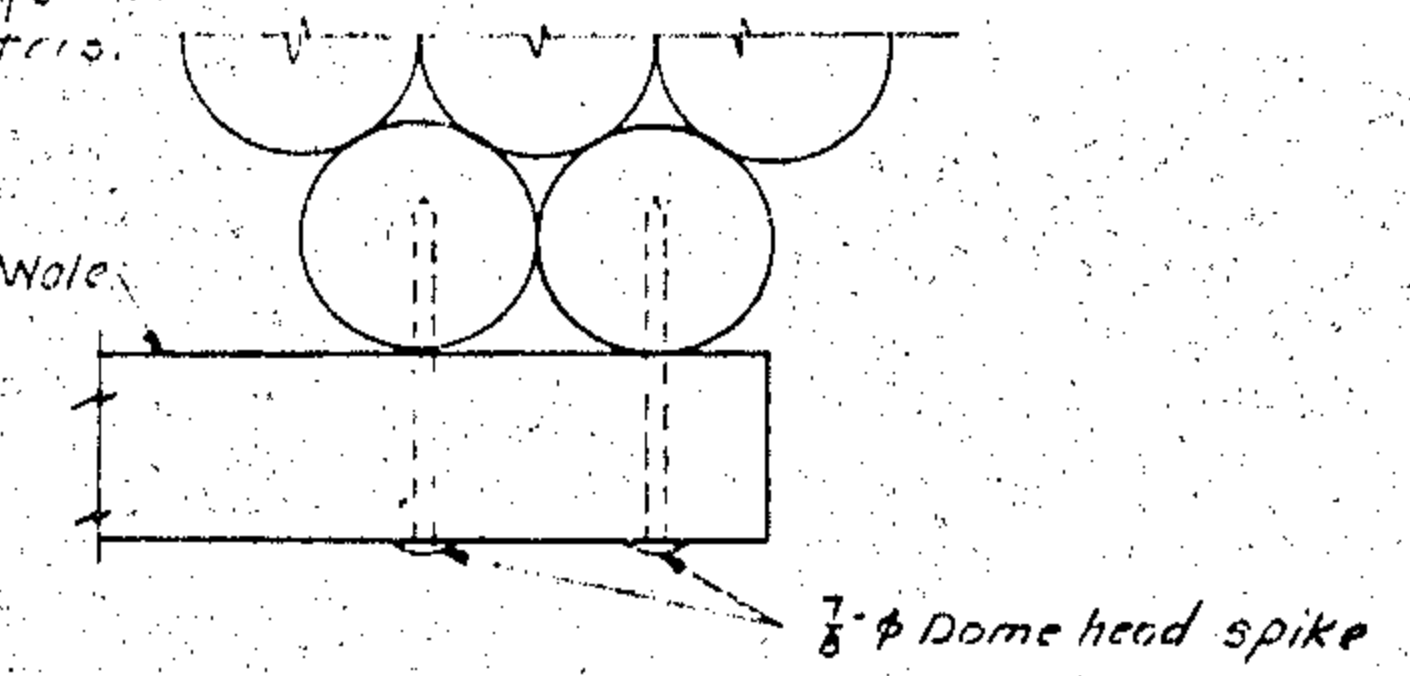
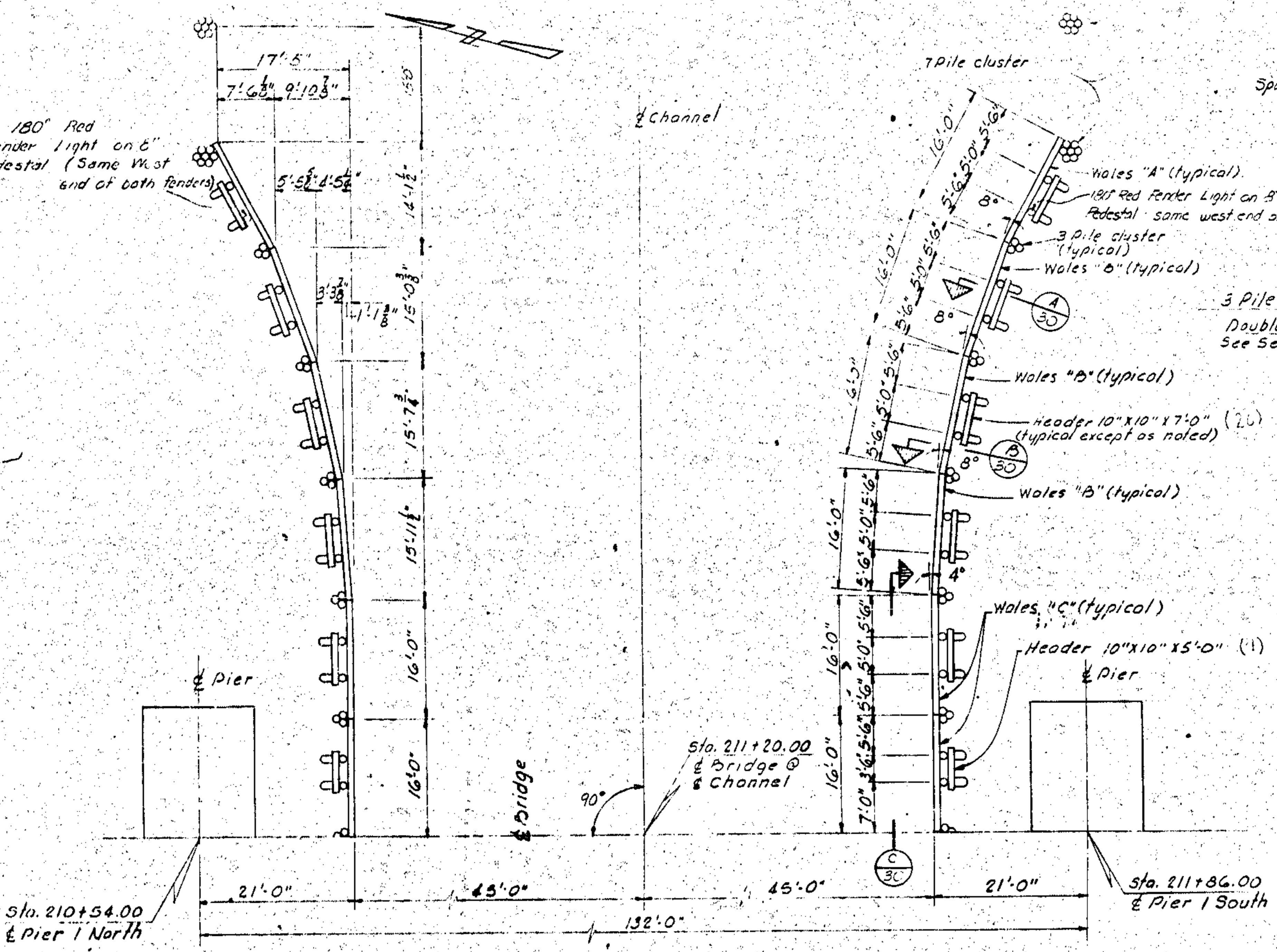
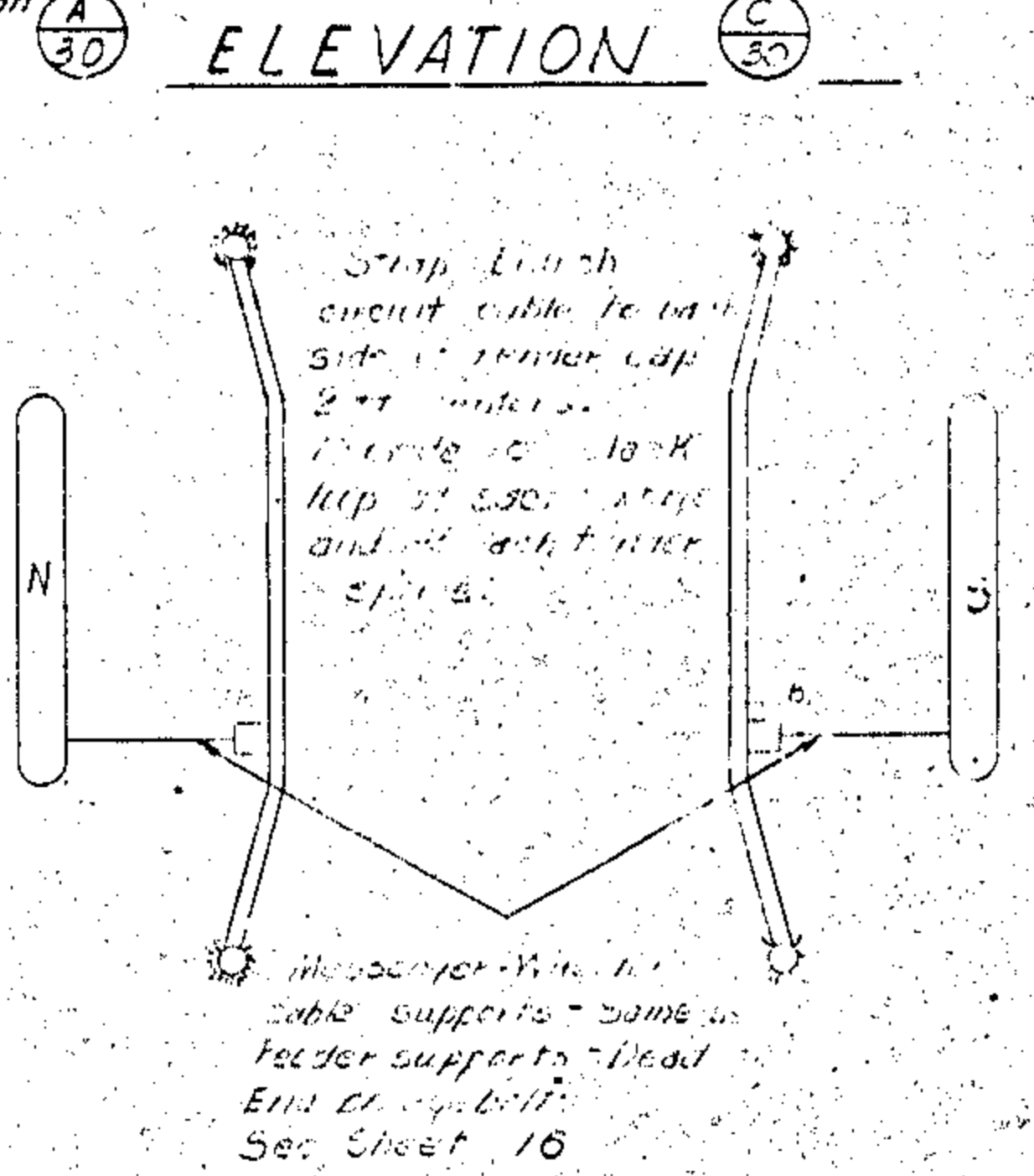
TOTAL BILL OF MATERIAL FOR NORTH & SOUTH FENDERS

Item	No.	Size	Surface to	Length	F.B.M.
Wales	168	10x10	10x10	16'-0"	22,000
Spacers	300	8x8	8x8	1'-0"	25,500
Headers	20	10x10	9 1/2 x 9 1/2	5'-0"	1,000
Headers	20	12x10	9 1/2 x 9 1/2	7'-0"	1,167
SEE PAGE 27 / SPRA 1					

Crossed Timber SEE PAGES 17-19 SPRA 1

Item	No.	Length	Total Lin. Ft.	
Piles	45		720	
Hardware				
Item	No.	Size	Length	Weight (Lbs)
Dome Head Bolts	48	3/4"	2'-2"	492
Dome Head Bolts	48	7/8"	2'-11"	520
Dome Head Bolts	336	3/8"	2'-0"	1379
O.G Washers	492	7/8"	-	650
Dome Head Spikes	464	7/8"	1'-4"	1387
Lag Bolts & Wash	8	3/4"	5'	-
3/4" Cable	-	3/4"	915	1272
Cable Clamps	336	5/8"	-	860
Nails	1360	6d	-	8
Nails	700	16d	-	14
Staples	240	3/4"	-	342
TOTAL WEIGHT				6200
Total Crossed Timber F.B.M.				20,334

GENERAL NOTES
 HARCHWAF: All hardware shall be galvanized. All nuts, bolts, washers and spikes shall be as manufactured by Jersey Bolt & Spike Corp. or Lewis Bolt and Nut Company or equal.
 CRESSOTE: Cressing shall be in accordance with the General Notes Sheet No. 1.
 PILES: All piles in the fender system shall be driven to the elevations shown on plans.
 NOTE: J.B. - Water Tight Cast Iron with Mounting Lugs and water tight connectors.



Note: All ends of cables to be secured with three standard cable clamps at minimum 4' spacings.
 Six (6) outside piles to be equally spaced on 6" circle and drawn together at top with 3 strands of 6x19 3/8 galvanized cable at elevations +4.25 and +8.75 Cable shall be secured with 3/8 galvanized staples.
 Drive piles on 3ft. centers and draw together at top with 3 strands of 6x19 3/8 galvanized cables at elevations +4.25 and +8.75 Cable shall be secured with 3/8 galvanized staples.

PROJECT NO. 6.2610029
 ONSLOW COUNTY
 STATION: 211 + 20.00-L

REYNOLDS, SMITH AND HILLS
 ARCHITECTS AND ENGINEERS - JACKSONVILLE, FLORIDA

STATE OF NORTH CAROLINA
 STATE HIGHWAY COMMISSION

FENDERS

DATE	BY	REVISION
5-3-68	C.J.K.	5-3-68
7-2-67	J.M.	6-30-67
6-30-67	J.M.	6-30-67

20
 55

DRAWN BY: B. Radacki DATE: 1-67
 CHECKED BY: P.H. DATE: 1-67

Rev #4 To add Pile Clusters & move location of fender lights.

Rev #3 To require staples to secure cable. By: C.J.K. 11/23/68 ✓ By: HCS
 Rev #2 To show lights on Fender System. 6-30-67. HCS
 Rev #1 Revised to correct quantity of Crossed Structure Timber Feb 11, 1967. By: HCS ✓ H.W.K.