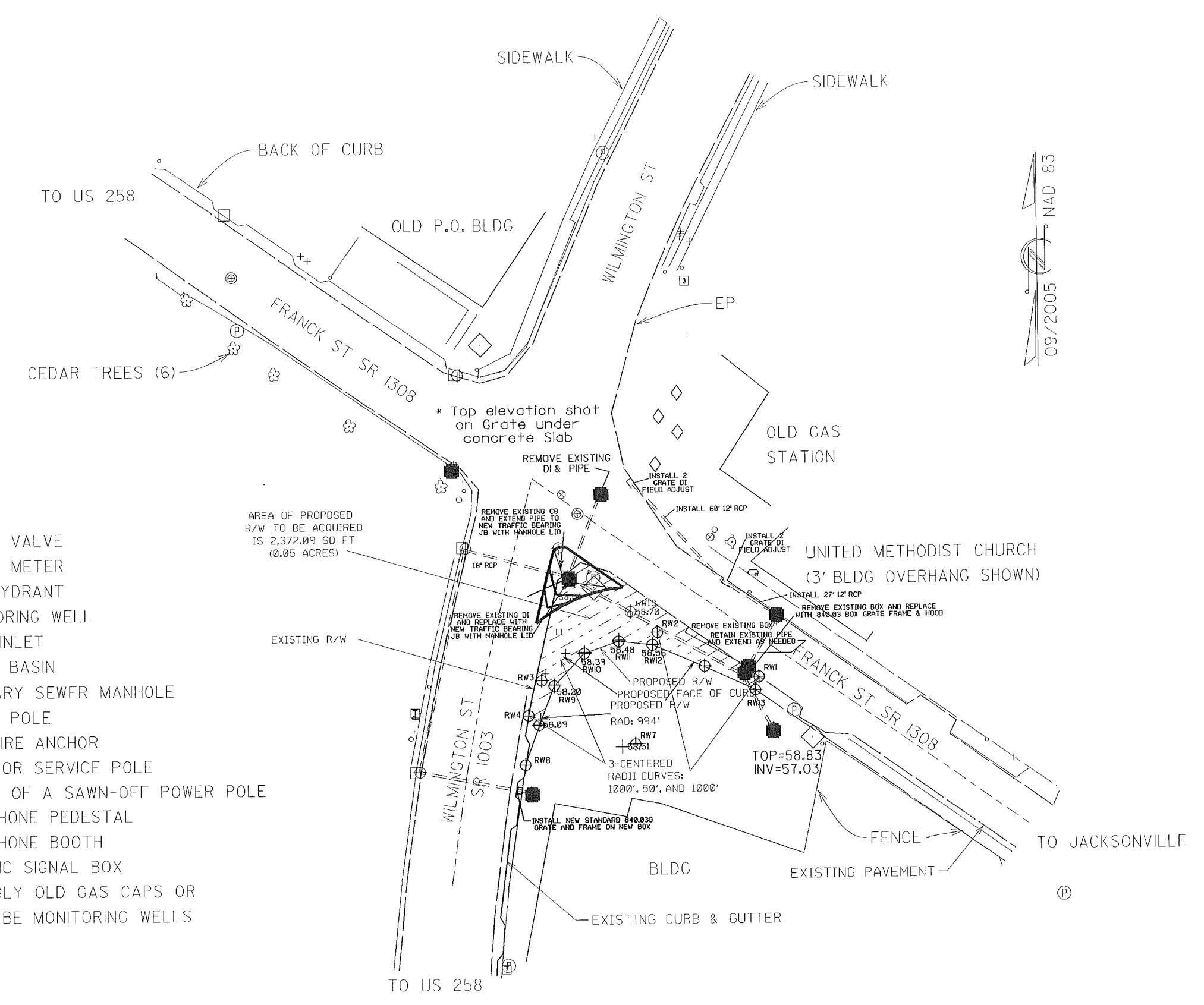


- ⊗ WATER VALVE
- WATER METER
- ⊕ FIRE HYDRANT
- MONITORING WELL
- DROP INLET
- CATCH BASIN
- ⊕ SANITARY SEWER MANHOLE
- Ⓟ POWER POLE
- + GUY WIRE ANCHOR
- LIGHT OR SERVICE POLE
- STUMP OF A SAWN-OFF POWER POLE
- ☐ TELEPHONE PEDESTAL
- ☑ TELEPHONE BOOTH
- ◻ TRAFFIC SIGNAL BOX
- ◇ POSSIBLY OLD GAS CAPS OR
MAYBE MONITORING WELLS

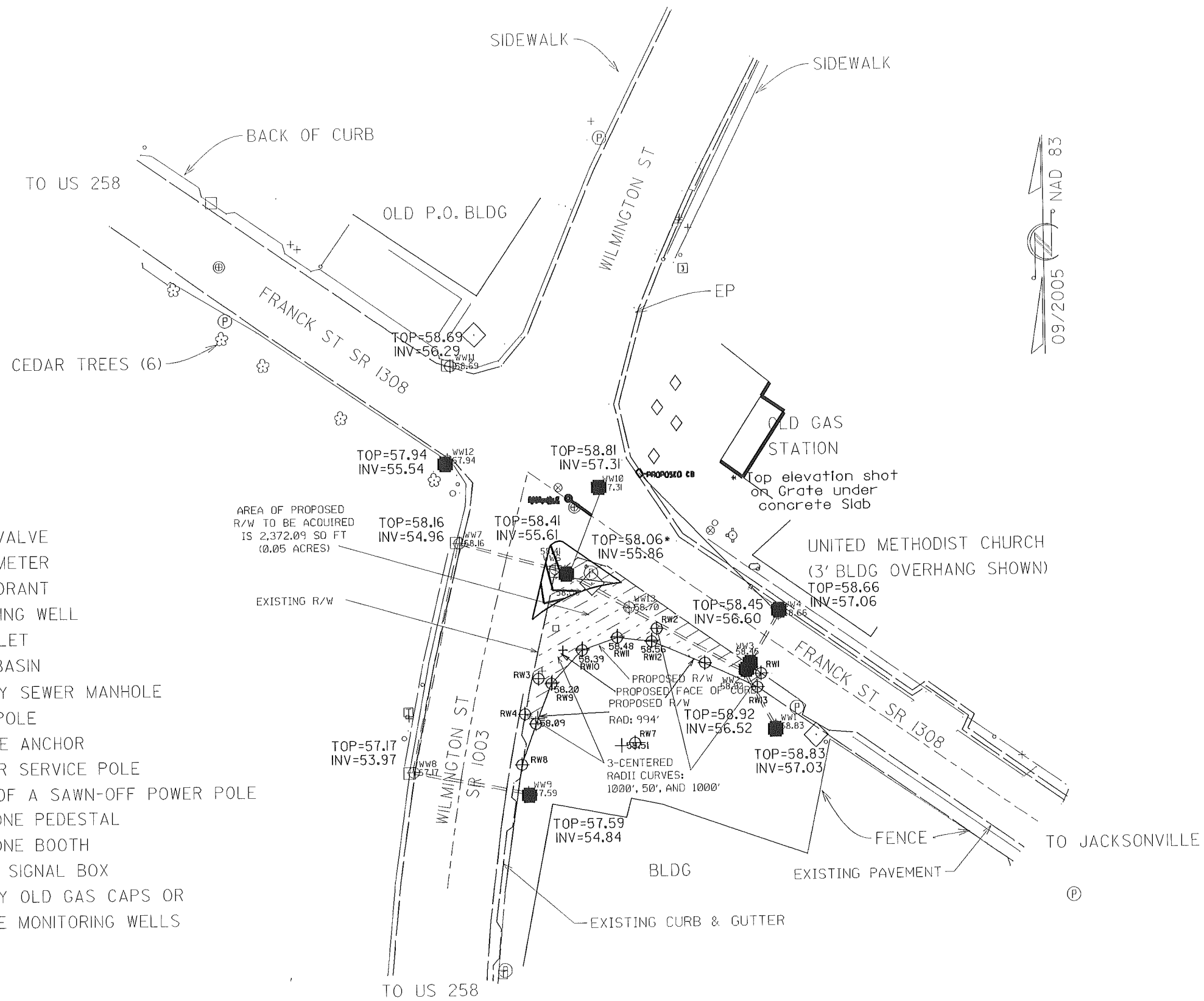


Prepared in the Office of:
Division of Highways, Division 3, District 1
Jacksonville, Onslow County, NC
 MAY 28, 2014 SCALE: 1 IN = 50 FT

Proposed Improvement of
 Intersection at Wilmington St
 and Franck St 9/19/2005

STATE PROJECT REFERENCE NO. 38307
LOCATION: ONSLOW COUNTY
TOWN OF RICHLANDS

- ⊗ WATER VALVE
- WATER METER
- ⊕ FIRE HYDRANT
- MONITORING WELL
- DROP INLET
- CATCH BASIN
- ⊕ SANITARY SEWER MANHOLE
- Ⓟ POWER POLE
- + GUY WIRE ANCHOR
- LIGHT OR SERVICE POLE
- STUMP OF A SAWN-OFF POWER POLE
- Ⓜ TELEPHONE PEDESTAL
- Ⓜ TELEPHONE BOOTH
- TRAFFIC SIGNAL BOX
- ◇ POSSIBLY OLD GAS CAPS OR
MAYBE MONITORING WELLS



09/2005
NAD 83

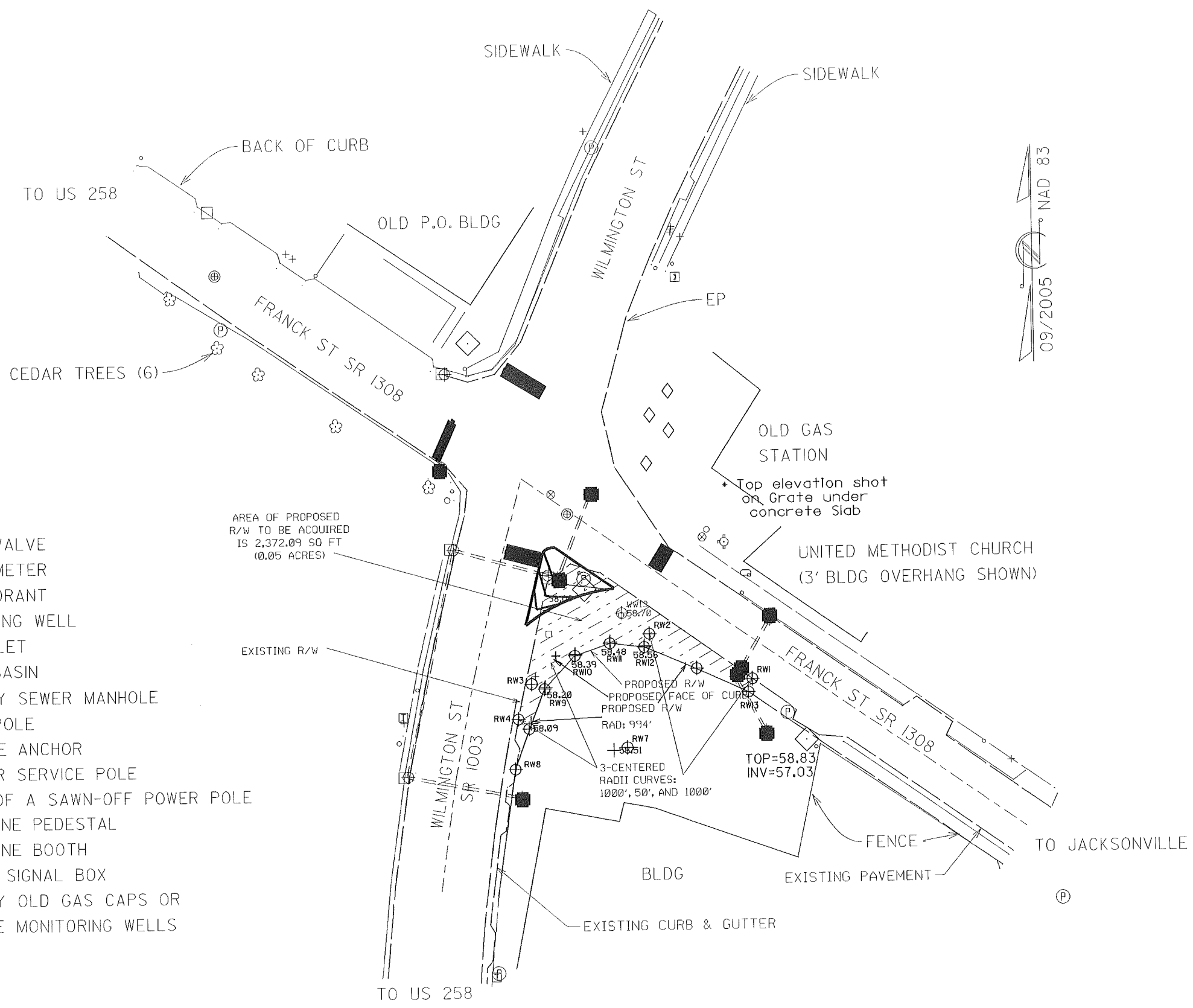
Prepared in the Office of:
Division of Highways, Division 3, District 1
Jacksonville, Onslow County, NC
 SEPTEMBER 28, 2005

Proposed Improvement of
 Intersection at Wilmington St
 and Franck St 9/19/2005

STATE PROJECT REFERENCE NO. 38307
LOCATION: ONSLOW COUNTY
TOWN OF RICHLANDS

SCALE: 1 IN = 50 FT

- ⊗ WATER VALVE
- WATER METER
- ⊕ FIRE HYDRANT
- MONITORING WELL
- DROP INLET
- CATCH BASIN
- ⊕ SANITARY SEWER MANHOLE
- Ⓟ POWER POLE
- + GUY WIRE ANCHOR
- LIGHT OR SERVICE POLE
- STUMP OF A SAWN-OFF POWER POLE
- Ⓜ TELEPHONE PEDESTAL
- Ⓜ TELEPHONE BOOTH
- TRAFFIC SIGNAL BOX
- ◇ POSSIBLY OLD GAS CAPS OR
MAYBE MONITORING WELLS

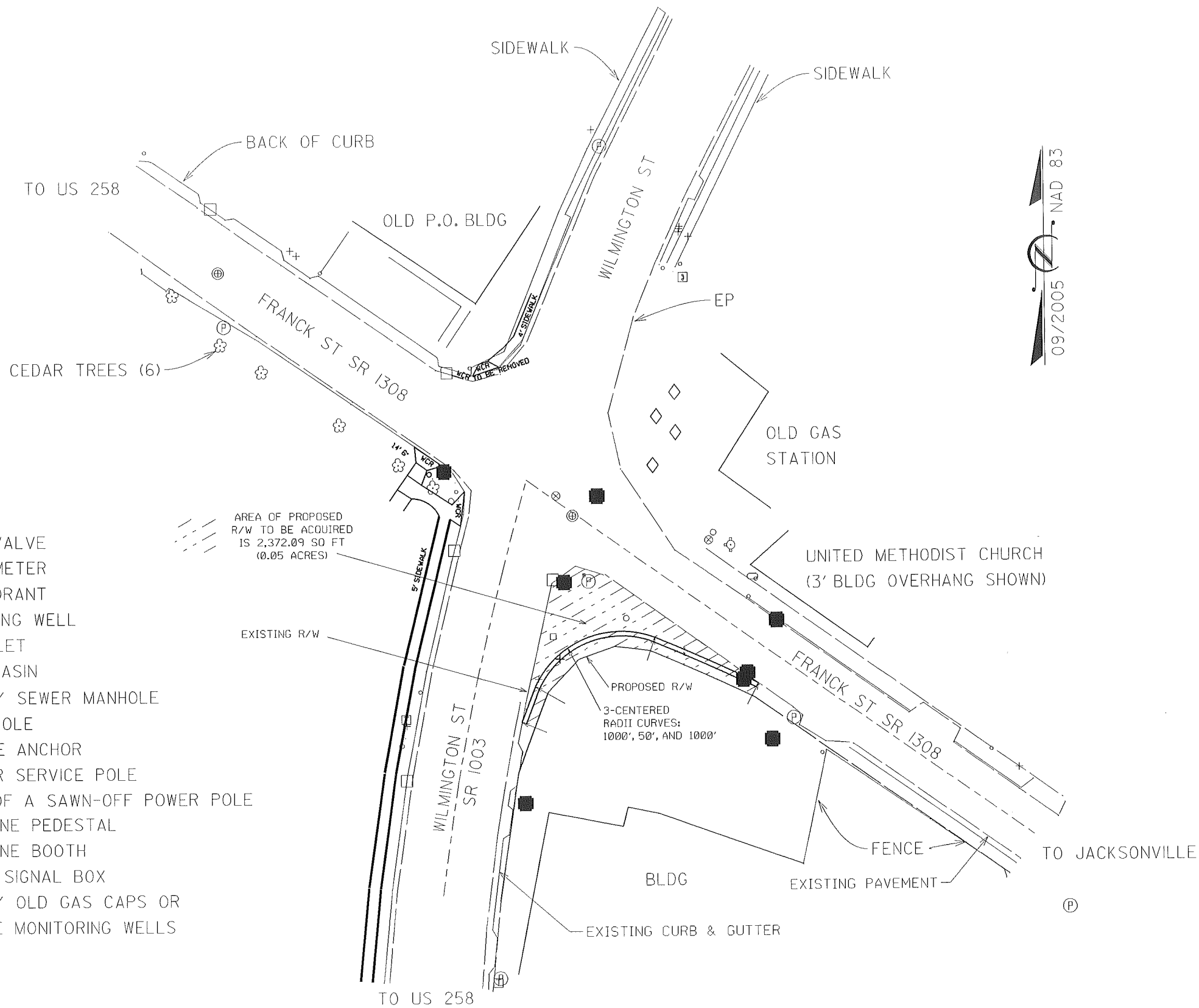


Prepared in the Office of:
Division of Highways, Division 3, District 1
Jacksonville, Onslow County, NC
 SEPTEMBER 28, 2005 SCALE: 1 IN = 50 FT

Proposed Improvement of
 Intersection at Wilmington St
 and Franck St 9/19/2005

STATE PROJECT REFERENCE NO. 38307
LOCATION: ONSLOW COUNTY
TOWN OF RICHLANDS

- ⊗ WATER VALVE
- WATER METER
- ⊕ FIRE HYDRANT
- MONITORING WELL
- DROP INLET
- CATCH BASIN
- ⊕ SANITARY SEWER MANHOLE
- Ⓟ POWER POLE
- + GUY WIRE ANCHOR
- LIGHT OR SERVICE POLE
- STUMP OF A SAWN-OFF POWER POLE
- ▣ TELEPHONE PEDESTAL
- ▢ TELEPHONE BOOTH
- ▣ TRAFFIC SIGNAL BOX
- ◇ POSSIBLY OLD GAS CAPS OR
MAYBE MONITORING WELLS



Prepared in the Office of:
Division of Highways, Division 3, District 1
Jacksonville, Onslow County, NC
 SEPTEMBER 28, 2005 SCALE: 1 IN = 50 FT

Proposed Improvement of
 Intersection at Wilmington St
 and Franck St 9/19/2005

STATE PROJECT REFERENCE NO. 38307
LOCATION: ONSLOW COUNTY
TOWN OF RICHLANDS