

Location 1

Autry Hwy (Rt)
 34.994529, -78.627049

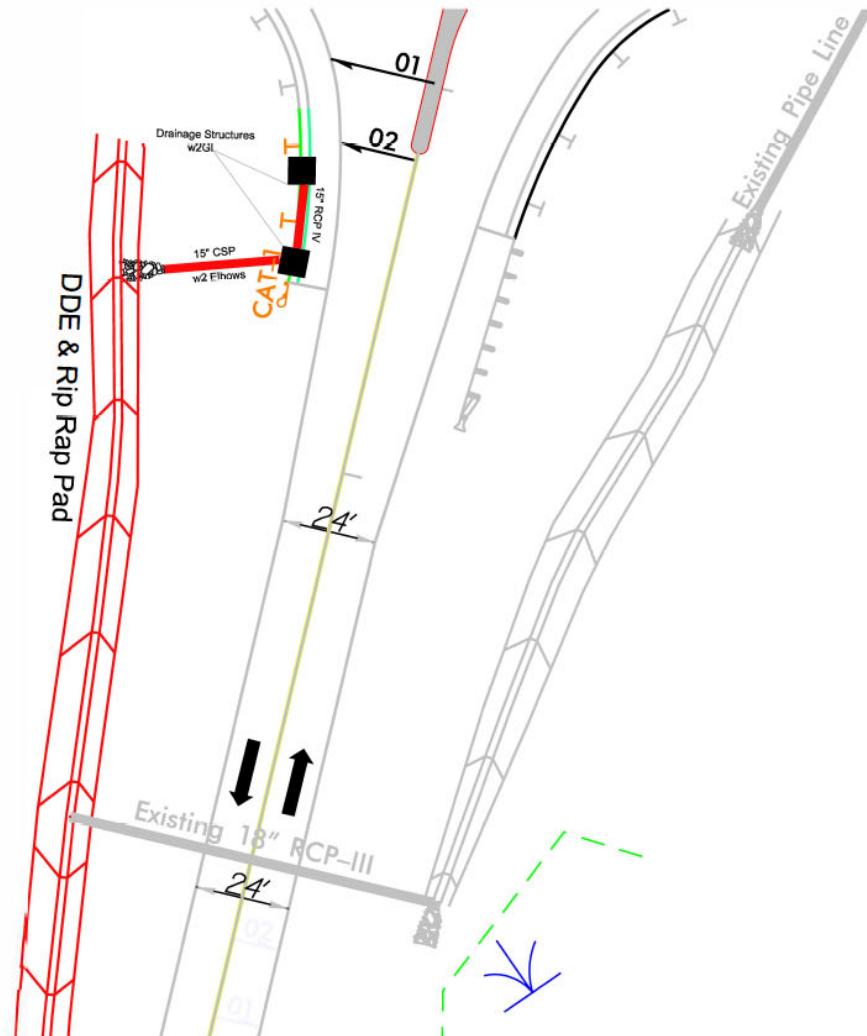
- Proposed:
- 65 cy Drainage Ditch Excavation
 - 62.5' Additional Guardrail
 - 62' Shoulder Berm Gutter
 - 62' Paved Shoulder
 - 32' of CSP w/2 Elbows
 - 2 Drainage Structures w/2GI 840.29
 - 16' RCP Class IV 15"
 - 1 Erosion Rip Rap Pad

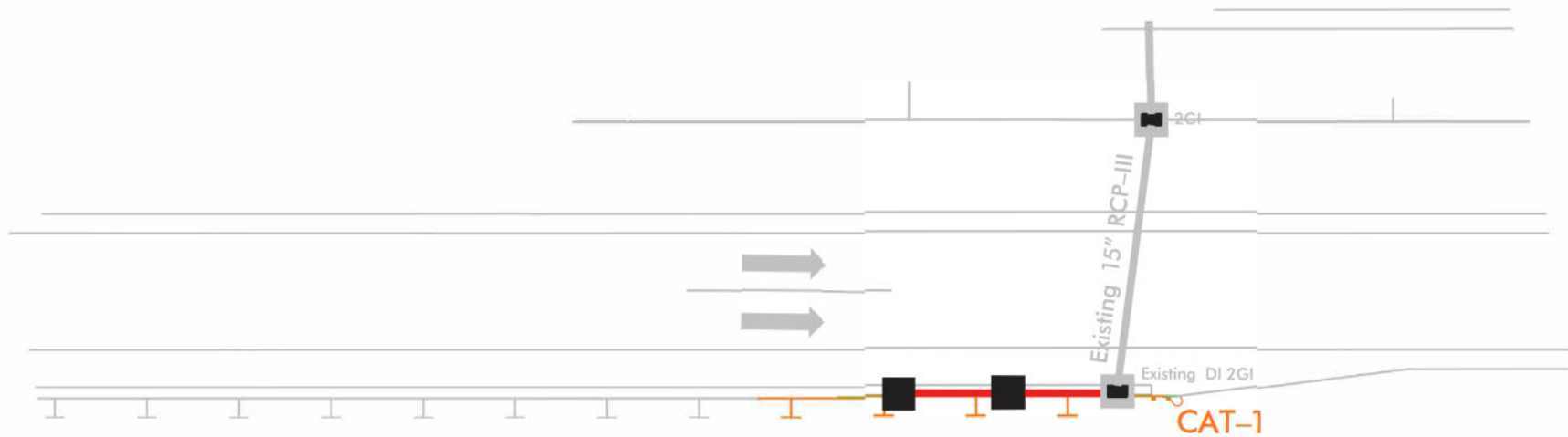
Remove & Replace Guardrail End Unit w/Mash Unit
 Grade Shoulder to Accommodate Guardrail
 Grade & Remove Existing Rock from Slope
 Install Erosion Control as Directed by the Engineer

Location 2

Autry Hwy (Lt)
34.994515, -78.627207

- Proposed:
- 85 cy Drainage Ditch Excavation
 - 30' Shoulder Berm Gutter
 - 32' of CSP w2 Elbows 15"
 - 2 Drainage Structures w/2GI 840.29
 - 16' RCP Class IV 15"
 - 1 Erosion Rip Rap Pad
- Remove & Reset Guardrail
Remove & Reset Guardrail End Unit
Grade & Remove Existing Rock from Slope
Install Erosion Control as Directed by the Engineer





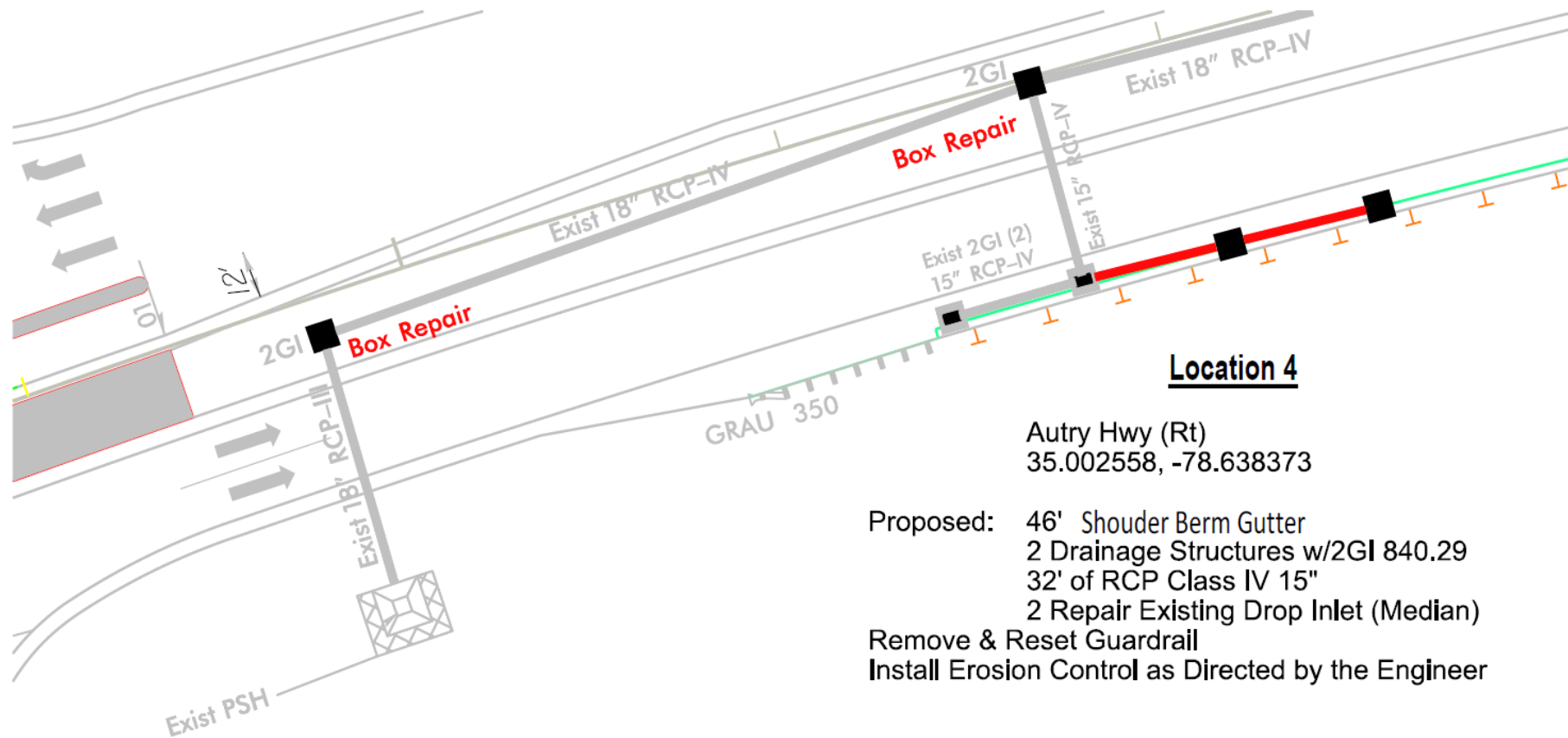
Location 3

NC-24 East Project 1
 34.992959, -78.624798

Proposed: 46' Shoulder Berm Gutter
 2 Drainage Structures w/2GI 840.29
 32' RCP Class IV 15"
 60 cy Drainage Ditch Excavation

Remove & Reset Guardrail
 Remove & Reset Guardrail End Unit
 Grade & Remove Existing Rock from Slope Install Erosion
 Control as Directed by the Engineer

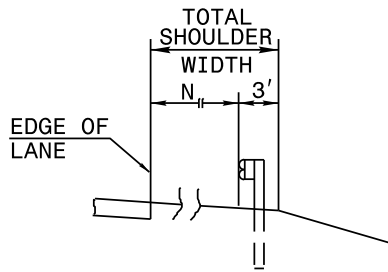
Remove Material from Ditch at toe of slope &
 Grade to Drain (Approx. 100 LF) Payment will be
 Drainage Ditch Excavation (CY)



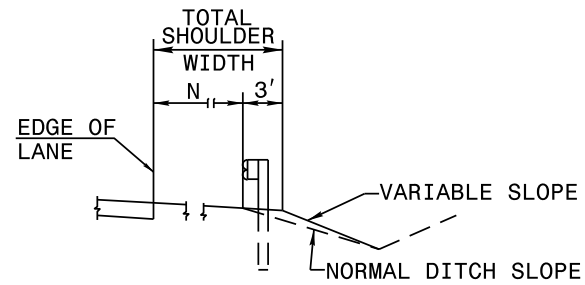
Location 4

Autry Hwy (Rt)
 35.002558, -78.638373

- Proposed: 46' Shoulder Berm Gutter
- 2 Drainage Structures w/2GI 840.29
- 32' of RCP Class IV 15"
- 2 Repair Existing Drop Inlet (Median)
- Remove & Reset Guardrail
- Install Erosion Control as Directed by the Engineer

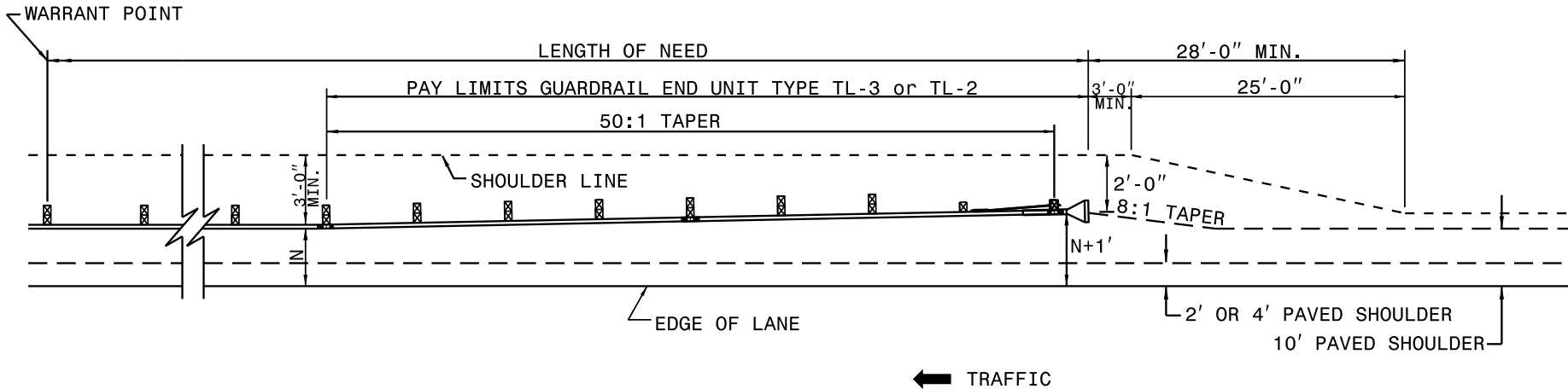


FILL SECTION



CUT SECTION

"N" = DISTANCE FROM EDGE OF LANE TO FACE OF GUARDRAIL WHERE GUARDRAIL IS PARALLEL TO LANE.



FOR POSTED SPEEDS \geq 45mph USE GREU TYPE TL-3
 FOR POSTED SPEEDS $<$ 45mph USE GREU TYPE TL-2

DETAIL OF BEGINNING OF GUARDRAIL IN CUT OR FILL SECTION

PROJECT NO.	SHEET NO.	TOTAL NO.
NC-24 Drainage		

SUMMARY OF QUANTITIES

PROJECT NO	COUNTY	MAP NO	ROUTE	DESCRIPTION	TYP NO	LANES	LANE TYPE	LENGTH	WIDTH	GRADING	0063000000-N	0106000000-E	0134000000-E	0448200000-E	0582000000-E	0636000000-E	1491000000-E	1523000000-E	2275000000-E	2286000000-N	2308000000-E	2367000000-N	2473000000-N	2473000000-N	2556000000-E					
											BORROW EXCAVATION	DRAINAGE DITCH EXCAVATION	15" KC PIPE CULVERTS, CLASS IV	15" CS PIPE CULVERTS, 0.064" THICK	15" CS PIPE ELBOWS, 0.064" THICK	BASE COURSE, B25.0C	SURFACE COURSE, SS.5C	FLOWABLE FILL	MASONRY DRAINAGE STRUCTURES	MASONRY DRAINAGE STRUCTURES (EXTRA DEPTH)	FRAME WITH TWO GRATES, STD 840.29	GENERIC DRAINAGE ITEM (DRAINAGE STRUCTURE REPAIR)	REMOVE & REPLACE CONC APRON FOR DROP INLET	SHOULDER BERM GUTTER						
MI	FT	LS	CY	CY	LF	LF	EA	TONS	TON	CY	EA	EA	EA	EA	EA	EA	EA	EA	EA	EA	EA	EA	EA	EA	EA	EA				
34416.3.4	Sampson	1	AUTRY HWY LT	34.994515, -78.627207	1	2	ZWU	0.038	12	0.25	80	85	16.00	32.00	2.00					2.00		2.00								
TOTAL FOR MAP NO. 1								0.038		0.25	80	85	16.00	32.00	2.00					2.00		2.00								
34416.3.4	Sampson	2	AUTRY HWY RT	34.994529, -78.627049	1	2	ZWU	0.038	12	0.25	80	65	16.00	32.00	2.00	25	10			2.00		2.00								
TOTAL FOR MAP NO. 2								0.038		0.25	80	65	16.00	32.00	2.00	25	10					2.00		2.00						
34416.3.4	Sampson	3	NC 24 EAST PROJ1	34.992959, -78.624798	1	2	ZWU	0.009	12	0.25	80	60	32.00							2.00		2.00								
TOTAL FOR MAP NO. 3								0.009		0.25	80	60	32.00									2.00		2.00						
34416.3.4	Sampson	4	NC 24 EAST PROJ2	35.002558, -78.638373	1	2	ZWU	0.009	12	0.25	60		32.00						4	2.00	4.00	2.00	2.00	1.00						
TOTAL FOR MAP NO. 4								0.009		0.25	60		32.00							4	2.00	4.00	2.00	2.00	1.00					
TOTAL FOR PROJ NO. NC 24 Drainage								0.094		1.00	300	210	96.00	64.00	4.00	25	10	4	8.00	4.00	8.00	8.00	2.00	1.00						
GRAND TOTAL								0.094		1.00	300.00	210.00	96.00	64.00	4.00	25.00	10.00	4.00	8.00	4.00	8.00	8.00	2.00	1.00						184.00

PROJECT NO	COUNTY	MAP NO	ROUTE	DESCRIPTION	TYP NO	LANES	LANE TYPE	LENGTH	WIDTH	3030000000-E	3287000000-N	3420000000-E	3435000000-N	6009000000-E	6009000000-E	6036000000-E	6071010000-E	6084000000-E	6102000000-E	6105000000-E	6117000000-N	6622000000-E	4508000000-E	4457000000-N	4507000000-E				
										STEEL BM GUARDRAIL	GUARDRAIL END UNITS, TYPE TL-3	REMOVE & RESET EXISTING GUARDRAIL (GENERIC)	REMOVE & RESET EXISTING END UNIT	TEMPORARY SALT FENCE	STONE FOR EC CLASS B	MATTING FOR EROSION CONTROL	WATTLE	SEED & MULCHING	SODDING	WATER	RESPONSE FOR EROSION CONTROL	GEOTEXTILE FOR DRAINAGE	TEMPORARY TRAFFIC CONTROL	WATER FILLED BARRIER	REMOVE & RESET WATER FILLED BARRIER				
MI	FT	LF	EA	EA	LF	TON	SY	LF	AC	SY	M/G	EA	SY	LS	LF	LF													
34416.3.4	Sampson	1	AUTRY HWY LT	34.994515, -78.627207	1	2	ZWU	0.038	12			25.00	1.00	150	2	400	40	0.20	80		1	7	0.25	200					
TOTAL FOR MAP NO. 1								0.038				25.00	1.00	150	2	400	40	0.20	80		1	7	0.25	200					
34416.3.4	Sampson	2	AUTRY HWY RT	34.994529, -78.627049	1	2	ZWU	0.038	12	62.50	1.00			150	2	400	40	0.20	185		1	7	0.25	150					
TOTAL FOR MAP NO. 2								0.038		62.50	1.00			150	2	400	40	0.20	185		1	7	0.25	150					
34416.3.4	Sampson	3	NC 24 EAST PROJ1	34.992959, -78.624798	1	2	ZWU	0.009	12			50.00	1.00	120		180	40	0.10	195		1		0.25	200					
TOTAL FOR MAP NO. 3								0.009				50.00	1.00	120		180	40	0.10	195		1		0.25	200					
34416.3.4	Sampson	4	NC 24 EAST PROJ2	35.002558, -78.638373	1	2	ZWU	0.009	12			50.00		120		80	40	0.10	55	3	1		0.25	200					
TOTAL FOR MAP NO. 4								0.009				50.00		120		80	40	0.10	55	3	1		0.25	200					
TOTAL FOR PROJ NO. NC 24 Drainage								0.094		62.50	1.00	125.00	2.00	540	4	1,060	160	0.60	515	3	4	14	1	200					
GRAND TOTAL								0.094		62.50	1.00	125.00	2.00	540.00	4.00	1060.00	160.00	0.60	515.00	3.00	4.00	14.00	1.00	200.00					550.00