



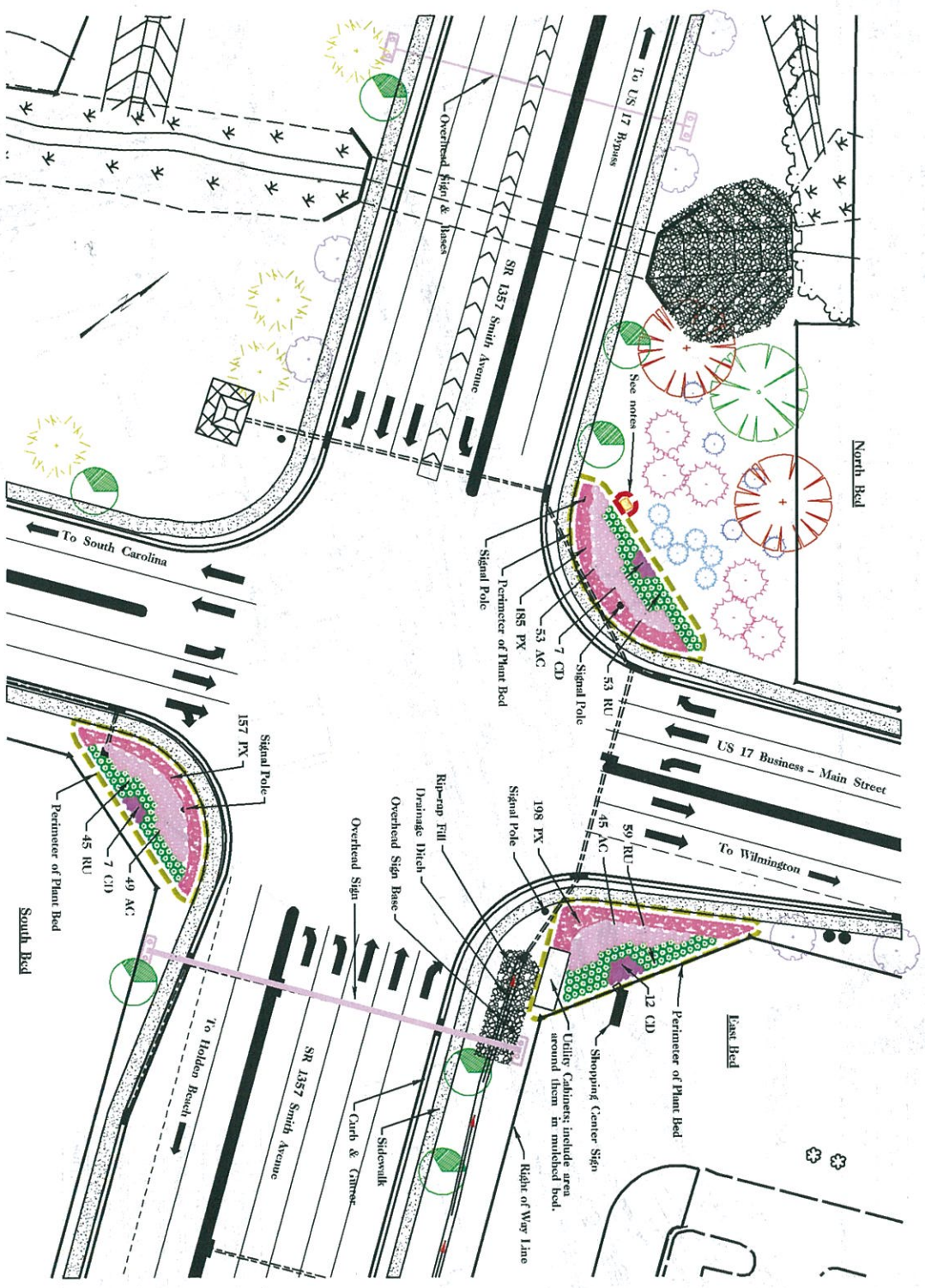
NC DOT - ROADSIDE ENVIRONMENTAL UNIT
 LANDSCAPE DESIGN & DEVELOPMENT
 1597 MAIN SERVICE CENTER PLAZA, W. 27069-1597
 PH: 919-733-2920 FAX: 919-733-9010
 HTTP://WWW.NCDOT.ORG/ROADSIDEENVIRONMENTAL

SR 1357, Smith Avenue Extension
 Charlotte, Brunswick County
 TRIP #: U-3462



TRIP #: U-3462
 VMS #: 34953.3.3
 Division: 3
 Division Engineer: H. Allen Pope, PE

Sheet Description
 SR 1357, Smith Avenue Extension
 Final Plan - Bed Details
 October 5, 2011
 November 4, 2011
 Sheet #: 5
 of
 Total Sheets: 5



Quantity	Item	Plant Name	Common Name
10	AC	Adiantum	Maund's Arum
25	CD	Callitriche	Common Foxglove
15	RU	Rubus	Blackberry
5	FX	Ficus	Fig
5	EV	Eucalyptus	Blue Gum Eucalyptus
5	SD	Sida	Black-eyed Susan



Note:
 Apply post-emergence herbicidal treatment and prepare plant beds according to the Standard Specifications. Incorporate soil amendment at a depth of 4". Incorporate uniformly and thoroughly to the full depth of each plant bed.

Note:
 Mulch for the area of the plant beds to be planted with ornamentals (Perennials) will be Pine Bark. Fines at a depth of 2 inches. The remainder of the beds will be mulched with Pine Bark Shredded at a depth of 4 inches.

Note:
 Install Wave Pattern in specified annual area of beds. Distribute the 3 varieties alternating colors in a uniform pattern to create a patchwork like pattern.

The area around the existing drop inlet will be surrounded with a 3 foot wide and 6 inch depth of approved riverstone, to prevent mulch from washing into it.