

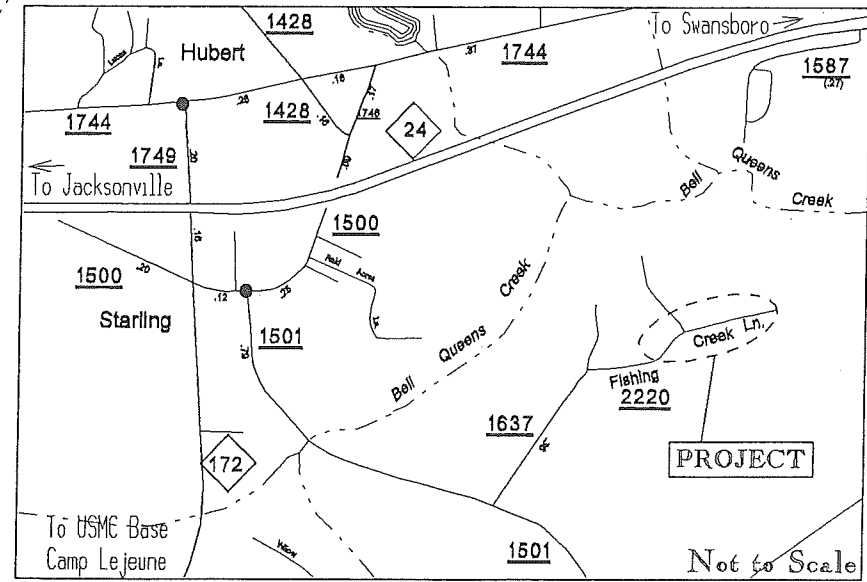
End of R/W on SR 1637 Sta 19+25.00 -Y-
 END EXISTING PAVEMENT
 Begin SR 2220 PC Sta 0+00.00 -L-
 = POT Sta 18+98.92 -Y- on SR 1637
 END STATE MAINT. SIGN

'B' TO 'A' N 34° 04' 42" E 89.88'
 'C' TO 'B' N 35° 06' 24" E 74.51'
 'C' TO 'D' S 81° 49' 33" W 39.89'
 'E' TO 'C' S 84° 32' 55" W 39.40'

DANIEL W. & JEAN L. WILLAFORD
 DB 654, PG 215
 MB 45, PG 204

JOHNNY L. McCALOM AND WIFE,
 TAMMY L. McCALOM
 DB 2329, PG 680
 MB 46, PG 187

DANIEL W. & JEAN L. WILLAFORD
 DB 654, PG 215
 MB 45, PG 204



VICINITY MAP

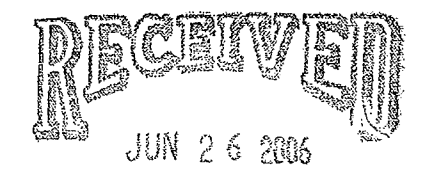
CURVE C1 DATA
 PI STA 0+22.88
 * Δ = 25° 45' 07" LT
 D = 57' 17' 45"
 * R = 100.00'
 L = 44.97'
 T = 22.88'
 C = 44.60'
 E = 2.58'

NOTE: RIGHT OF WAY FOR THE FIRST 680.92 FT, WHICH WAS ADDED TO THE SYSTEM AS SR 2220 IN APRIL 2006, WAS ACQUIRED BY DIVISION 3 - DISTRICT 1 MAP 385-0 DATED 08-12-2004 AS SURVEYED BY D.R. RACINE.

ABBREVIATIONS

- EIR Existing Iron Rebar
- ECM Existing Concrete Monument
- EPK Existing PK Nail
- PP Power Pole
- GP Guy Pole
- GUY Guy Wire Anchor
- TVP Cable TV Pedestal
- WM Water Meter
- WV Water Valve
- PEP Polyethylene Pipe
- CMP Corrugated Metal Pipe
- HDPE High Density Polypropylene Extruded Pipe

Revisions		
Date	By	Changes
06-12-06	KAA	REMOVED FENCE BEGINNING AROUND STA 18+70 RT. ADDED PARCEL NUMBERS. REVISED SOME OWNERS INFO.
06-05-06	KAA	ADDED SHEET 5 TO SHOW ENVIRONMENTAL DETAILS.

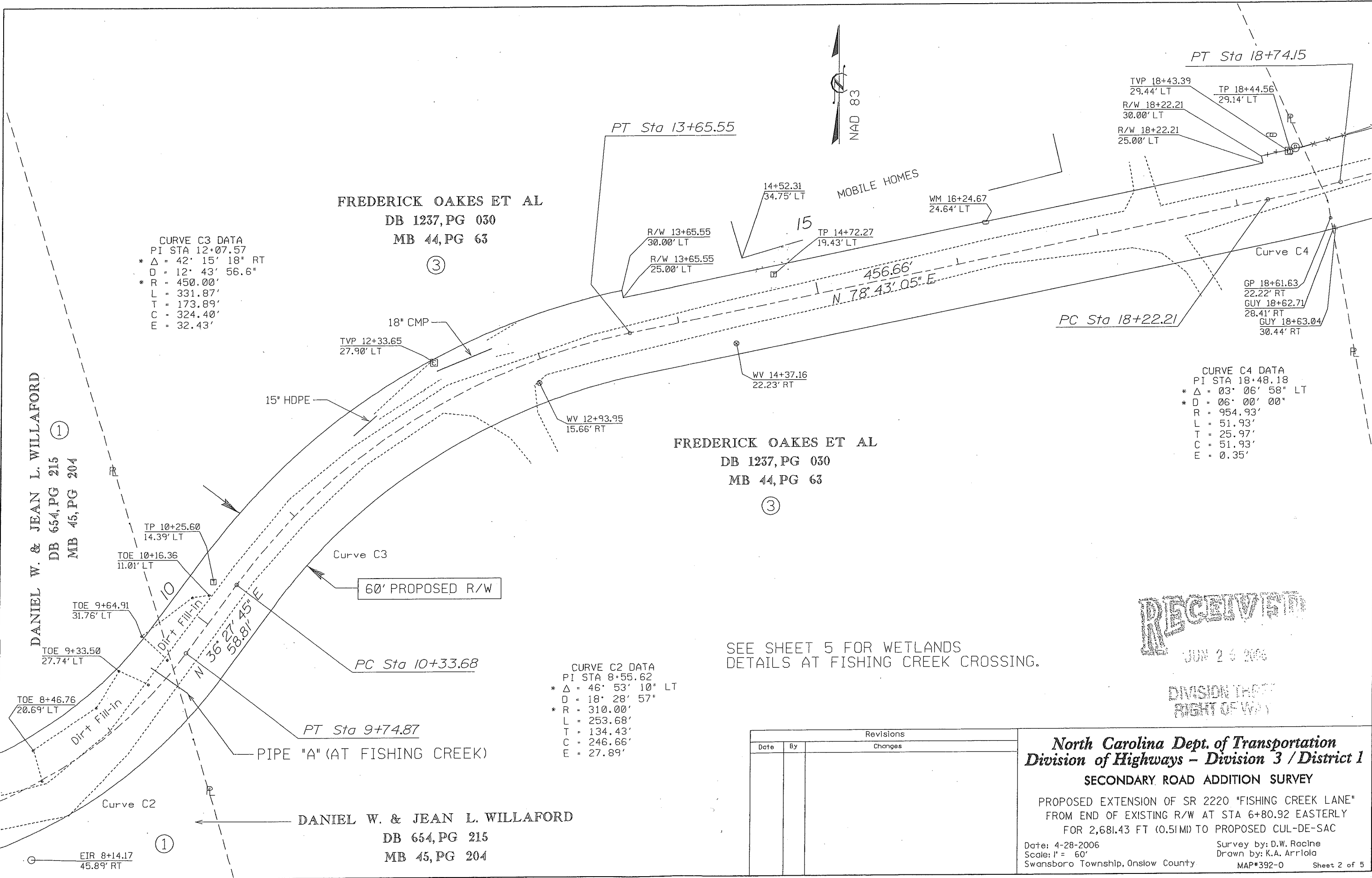


DIVISION THREE
 RIGHT OF WAY

North Carolina Dept. of Transportation
Division of Highways - Division 3 / District 1
SECONDARY ROAD ADDITION SURVEY
 PROPOSED EXTENSION OF SR 2220 "FISHING CREEK LANE"
 FROM END OF EXISTING R/W AT STA 6+80.92 EASTERLY
 FOR 2,681.43 FT (0.51MI) TO PROPOSED CUL-DE-SAC

Date: 4-28-2006
 Scale: 1" = 60'
 Swansboro Township, Onslow County

Survey by: D.W. Racine
 Drawn by: K.A. Arrlola
 MAP#392-0 Sheet 1 of 5



CURVE C3 DATA
 PI STA 12+07.57
 * Δ = 42° 15' 18" RT
 D = 12° 43' 56.6"
 * R = 450.00'
 L = 331.87'
 T = 173.89'
 C = 324.40'
 E = 32.43'

CURVE C4 DATA
 PI STA 18+48.18
 * Δ = 03° 06' 58" LT
 * D = 06° 00' 00"
 R = 954.93'
 L = 51.93'
 T = 25.97'
 C = 51.93'
 E = 0.35'

CURVE C2 DATA
 PI STA 8+55.62
 * Δ = 46° 53' 10" LT
 D = 18° 28' 57"
 * R = 310.00'
 L = 253.68'
 T = 134.43'
 C = 246.66'
 E = 27.89'

DANIEL W. & JEAN L. WILLAFORD
 DB 654, PG 215
 MB 45, PG 204

FREDERICK OAKES ET AL
 DB 1237, PG 030
 MB 44, PG 63

FREDERICK OAKES ET AL
 DB 1237, PG 030
 MB 44, PG 63

DANIEL W. & JEAN L. WILLAFORD
 DB 654, PG 215
 MB 45, PG 204

SEE SHEET 5 FOR WETLANDS
 DETAILS AT FISHING CREEK CROSSING.

RECEIVED
 JUN 25 2006
 DIVISION THREE
 RIGHT OF WAY

Revisions		Changes
Date	By	

North Carolina Dept. of Transportation
Division of Highways - Division 3 / District 1
SECONDARY ROAD ADDITION SURVEY

PROPOSED EXTENSION OF SR 2220 "FISHING CREEK LANE"
 FROM END OF EXISTING R/W AT STA 6+80.92 EASTERLY
 FOR 2,681.43 FT (0.51MI) TO PROPOSED CUL-DE-SAC

Date: 4-28-2006
 Scale: 1" = 60'
 Swansboro Township, Onslow County

Survey by: D.W. Racine
 Drawn by: K.A. Arrlola
 MAP#392-0 Sheet 2 of 5

BERNICE N. PAGE FAMILY TRUST
DB 2072, PG 323
MB 08, PG 65

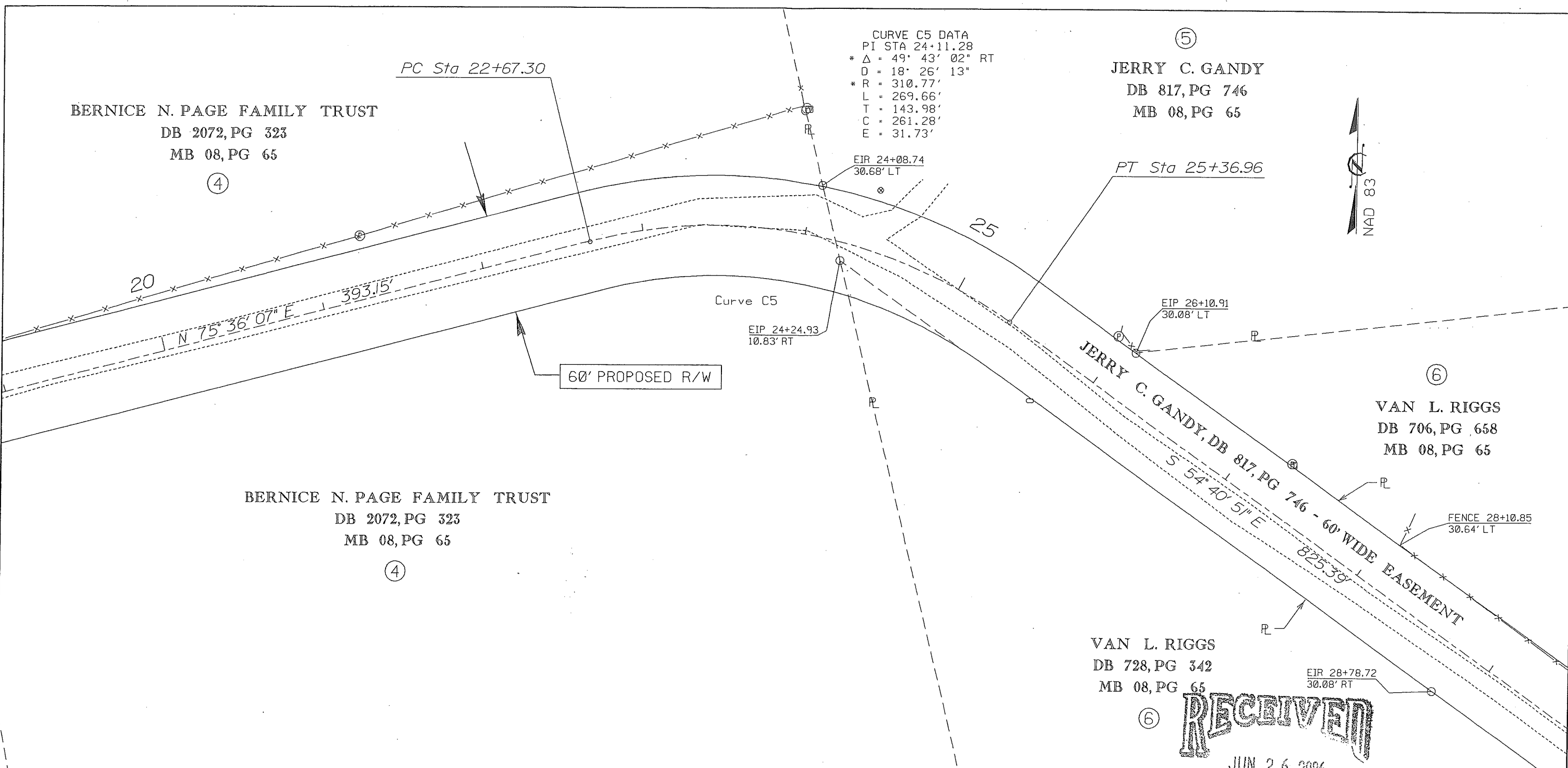
④

BERNICE N. PAGE FAMILY TRUST
DB 2072, PG 323
MB 08, PG 65

④

CURVE C5 DATA
PI STA 24+11.28
* Δ = 49° 43' 02" RT
D = 18' 26' 13"
* R = 310.77'
L = 269.66'
T = 143.98'
C = 261.28'
E = 31.73'

⑤
JERRY C. GANDY
DB 817, PG 746
MB 08, PG 65



⑥
VAN L. RIGGS
DB 706, PG 658
MB 08, PG 65

VAN L. RIGGS
DB 728, PG 342
MB 08, PG 65

⑥

RECEIVED

JUN 26 2006

DIVISION 3
RIGHT OF WAY

North Carolina Dept. of Transportation
Division of Highways - Division 3 / District 1
SECONDARY ROAD ADDITION SURVEY

PROPOSED EXTENSION OF SR 2220 'FISHING CREEK LANE'
FROM END OF EXISTING R/W AT STA 6+80.92 EASTERLY
FOR 2,681.43 FT (0.51MI) TO PROPOSED CUL-DE-SAC

Date: 4-28-2006
Scale: 1" = 60'

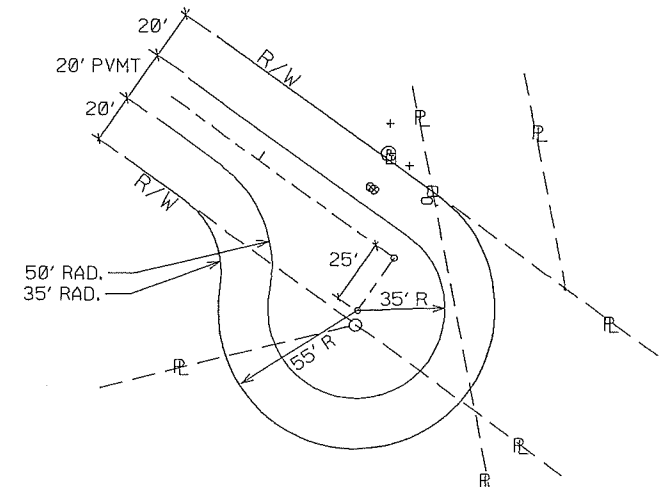
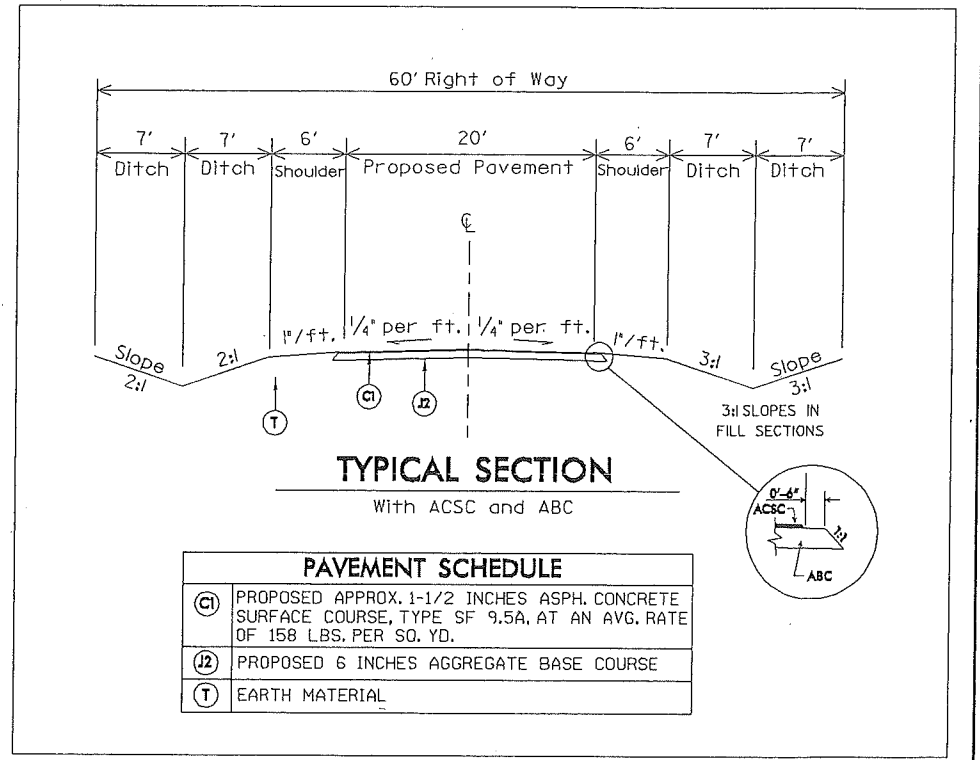
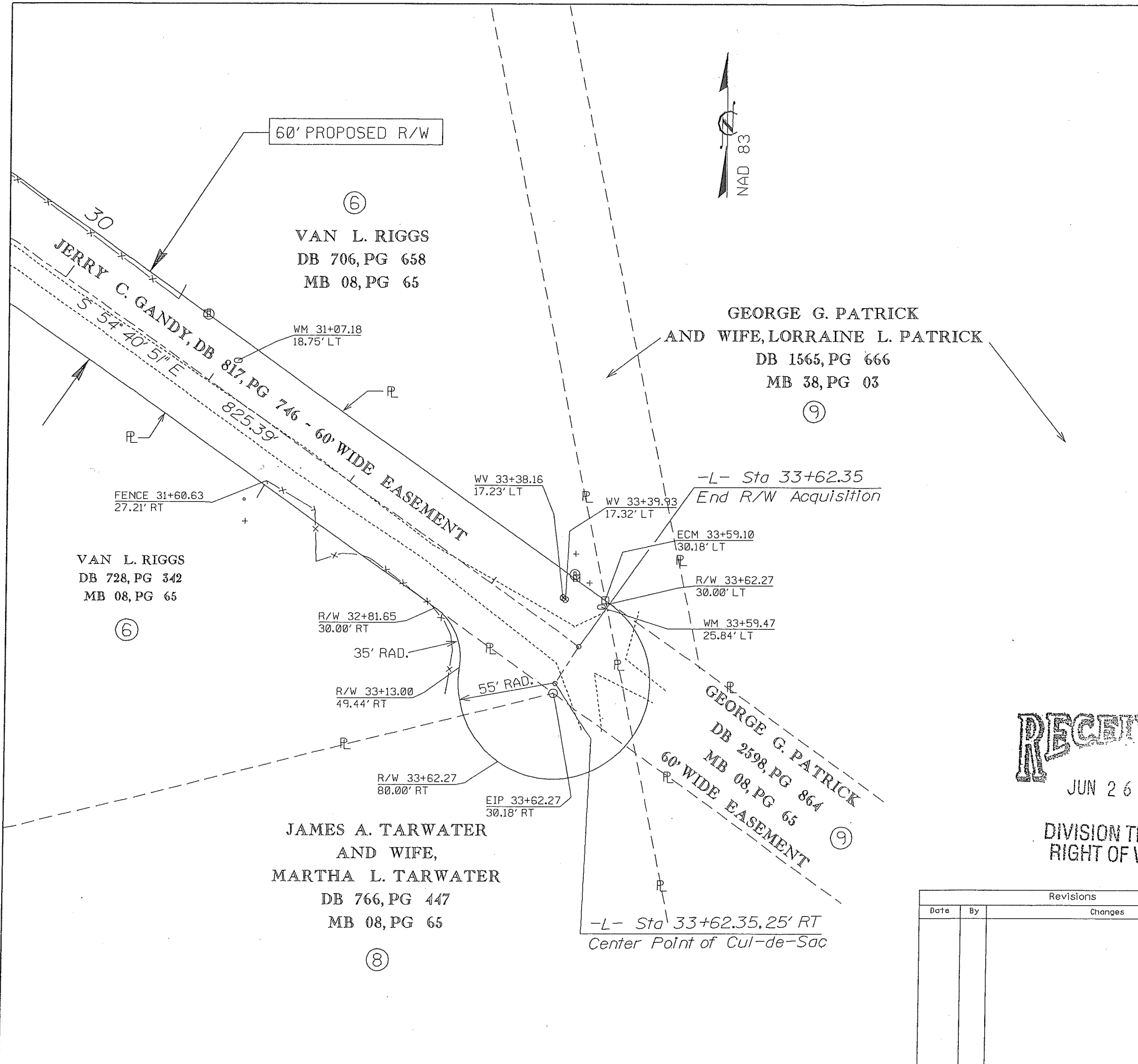
Swansboro Township, Onslow County

Survey by: D.W. Racine
Drawn by: K.A. Arriola

MAP#392-0 Sheet 3 of 5

PIPE SCHEDULE

PIPE	STATION	EXISTING PIPE		PROPOSED PIPE		COMMENTS
		SIZE	LENGTH	SIZE	LENGTH	
A	9+53	54" CMP	31'	72" CMP	60'	
B						



RECEIVED
JUN 26 2006

DIVISION THREE
RIGHT OF WAY

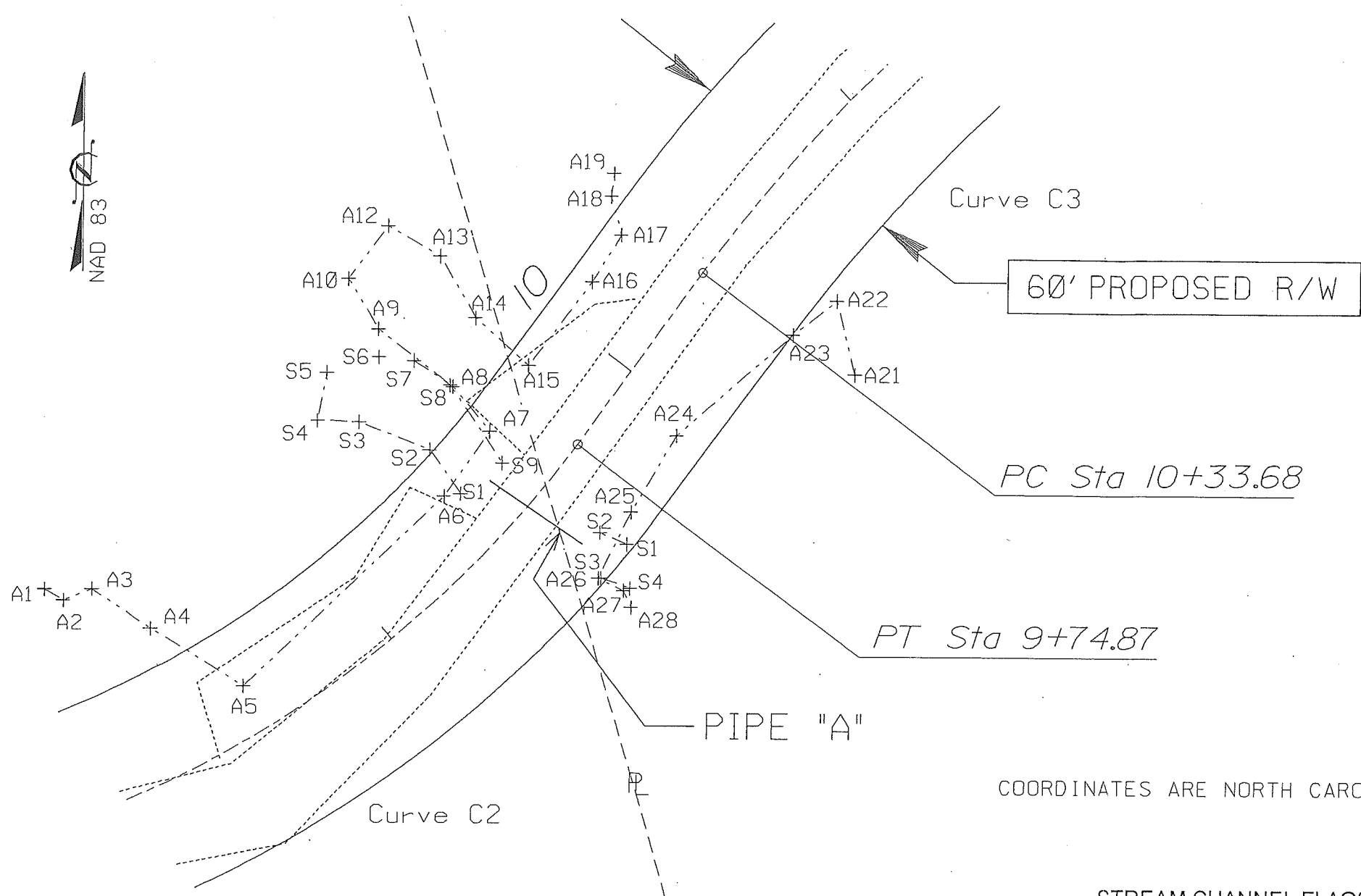
Revisions		
Date	By	Changes

North Carolina Dept. of Transportation
Division of Highways - Division 3 / District 1
SECONDARY ROAD ADDITION SURVEY

PROPOSED EXTENSION OF SR 2220 "FISHING CREEK LANE" FROM END OF EXISTING R/W AT STA 6+80.92 EASTERLY FOR 2,681.43 FT (0.51MI) TO PROPOSED CUL-DE-SAC

Date: 4-28-2006
Scale: 1" = 60'
Swansboro Township, Onslow County

Survey by: D.W. Racine
Drawn by: K.A. Arriola
MAP#392-0 Sheet 4 of 5



**ENVIRONMENTAL DETAILS
AT FISHING CREEK CROSSING**
Not to Scale

COORDINATES ARE NORTH CAROLINA STATE PLANE.

WETLAND FLAGS - LEFT SIDE

FLAG#	NORTHING	EASTING
A1	352772.2286	2536211.5859
A2	352769.1301	2536216.8289
A3	352772.3202	2536224.6592
A4	352761.3365	2536241.1737
A5	352745.4309	2536266.7890
A6	352798.3339	2536322.1596
A7	352816.3061	2536334.7465
A8	352828.6349	2536324.3227
A9	352844.3804	2536303.4878
A10	352858.1297	2536295.0849
A12	352872.6716	2536306.0384
A13	352864.4447	2536320.4889
A14	352847.4887	2536330.4604
A15	352834.5551	2536345.3825
A16	352857.5345	2536362.8899
A17	352870.4068	2536371.0621
A18	352880.9218	2536368.1896

WETLAND FLAGS - RIGHT SIDE

FLAG#	NORTHING	EASTING
A19	352887.1877	2536368.8715
A21	352832.3276	2536436.6123
A22	352852.5390	2536431.3699
A23	352843.1791	2536419.3197
A24	352815.3179	2536387.2777
A25	352794.1288	2536374.4959
A26	352775.7016	2536365.4518
A27	352772.2924	2536372.5630
A28	352767.5997	2536374.7609

STREAM CHANNEL FLAGS - LEFT SIDE

FLAG#	NORTHING	EASTING
S1	352799.1323	2536326.7800
S2	352811.2192	2536318.1079
S3	352818.8841	2536298.4014
S4	352819.1938	2536286.7929
S5	352832.4318	2536289.2915
S6	352836.7474	2536303.7407
S7	352835.7657	2536313.5448
S8	352829.0684	2536323.6464
S9	352807.6049	2536338.3808

STREAM CHANNEL FLAGS - RIGHT SIDE

FLAG#	NORTHING	EASTING
S1	352785.2278	2536373.5883
S2	352788.4496	2536365.8261
S3	352775.7913	2536366.2673
S4	352772.9738	2536374.4073

RECEIVED
JUN 26 2006

DIVISION THREE
RIGHT OF WAY

North Carolina Dept. of Transportation
Division of Highways - Division 3 / District 1
SECONDARY ROAD ADDITION SURVEY
PROPOSED EXTENSION OF SR 2220 "FISHING CREEK LANE"
FROM END OF EXISTING R/W AT STA 6+80.92 EASTERLY
FOR 2,681.43 FT (0.51MI) TO PROPOSED CUL-DE-SAC

Date: 4-28-2006
Scale: 1" = 60'
Swansboro Township, Onslow County

Survey by: D.W. Racine
Drawn by: K.A. Arriola
MAP#392-0 Sheet 5 of 5