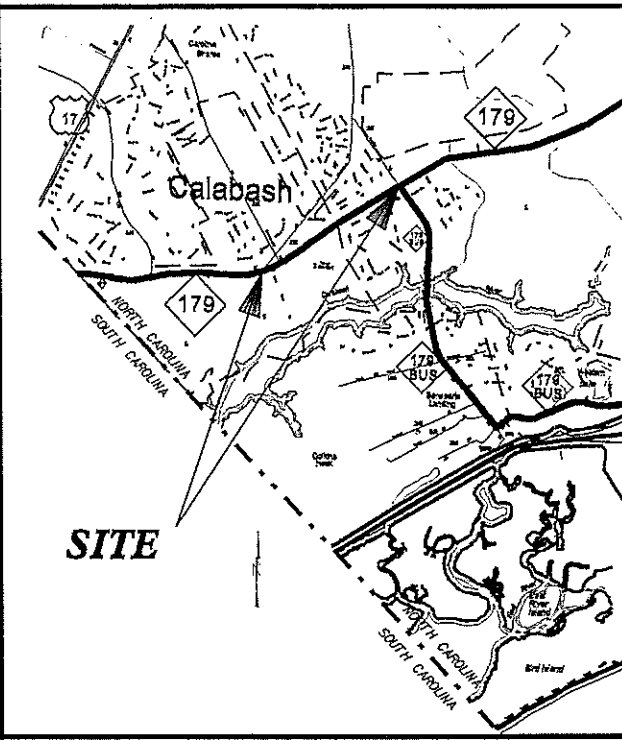


07/16/2013

**PROJECT: 43669**



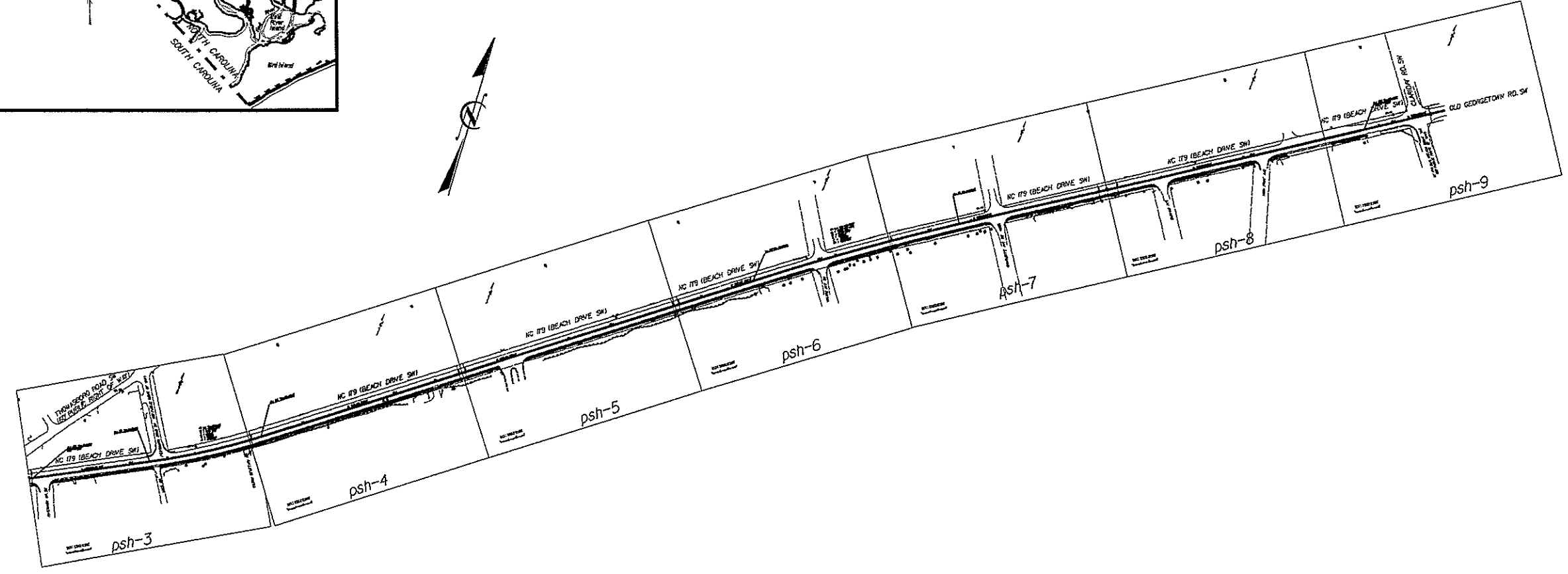
STATE OF NORTH CAROLINA  
DIVISION OF HIGHWAYS

**BRUNSWICK COUNTY**

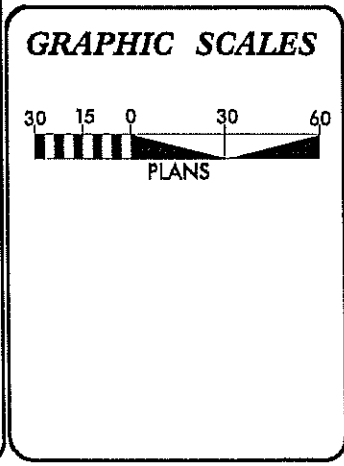
STATE	STATE PROJECT REFERENCE NO.	SHEET NO.	TOTAL SHEETS
N.C.	43669	1	32
STATE PROJ. NO.	F.A. PROJ. NO.	DESCRIPTION	
43669	3603.3.26		

**LOCATION:** NC 179 from approximately 200' NE of NC 179/Thomasboro Rd. Intersection to approximately 200' SW of NC 179/NC 179 Business Intersection in town of Calabash in Brunswick County.

**TYPE OF WORK:** Curb Ramps, Drainage and Concrete Sidewalk.



**NOT TO SCALE**



**PROJECT LENGTH**

MAP NO. 1 (-L- NC 179) = 0.923 MI.

TOTAL = 0.923 MI.

Prepared In the Office of:  
**DIVISION OF HIGHWAYS**  
5501 Barbados Blvd., Castle Hayne, NC 28429

---

2012 STANDARD SPECIFICATIONS

**LETTING DATE:**  
NOVEMBER 7, 2013

SCOTT E. COOKE, PE  
PROJECT ENGINEER

CARLA M. SCHOONMAKER  
PROJECT DESIGN TECHNICIAN

I:\source\_files\43669\NPlan\_Sheets\43669\_Calabash\_Sidewalk\_Rdy\_TSHL\_08262013.dgn

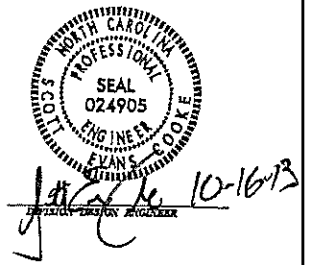
8/17/99

30-SEP-2013 15:49 C:\AD\CHINEE\BQ\WIS\10\13669\Colebasah\_Multituse\_Path\ROADWAY\Pro\Plan\_Sheets\43669\_Colebasah\_Sidevalk\_Rd\paha2.dgn

EFF. 01-17-2012  
REV. 10-30-2012

2012 ROADWAY ENGLISH STANDARD DRAWINGS

The following Roadway Standards as appear in "Roadway Standard Drawings" Highway Design Branch - N. C. Department of Transportation - Raleigh, N. C., Dated January, 2012 are applicable to this project and by reference hereby are considered a part of these plans:



STD.NO.	TITLE
DIVISION 8 - INCIDENTALS	
840.29	Frames and Narrow Slot Flat Grates
848.01	Concrete Sidewalk
848.06	Curb Ramp - Existing Curb & Gutter

INDEX OF SHEETS

SHEET NUMBER	SHEET
1	TITLE SHEET
1-A	INDEX OF SHEETS, GENERAL NOTES, AND LIST OF STANDARD DRAWINGS
1-B	CONVENTIONAL SYMBOLS
1-C	ALIGNMENT DESCRIPTION
2 THRU 2-J	TYPICAL SECTIONS AND DETAILS
3	SUMMARY OF QUANTITIES
3A	DRAINAGE SUMMARY
4 THRU 10	PLAN SHEET
EC-1 THRU EC-8	EROSION CONTROL PLANS

GENERAL NOTES:

2012 SPECIFICATIONS  
EFFECTIVE: 01-17-2012  
REVISED: 07-30-2012

SUBSURFACE PLANS:

NO SUBSURFACE PLANS ARE AVAILABLE ON THIS PROJECT. THE CONTRACTOR SHOULD MAKE HIS OWN INVESTIGATION AS TO THE SUBSURFACE CONDITIONS.

CURB RAMPS:

CURB RAMPS ARE SHOWN ON THE PLANS AT APPROXIMATE LOCATIONS. CONSTRUCT ALL CURB RAMPS ACCORDANCE WITH STD 848.06 AND/OR ATTACHED DETAILS.

12/05/11

Note: Not to Scale

\*S.U.E. = Subsurface Utility Engineering

STATE OF NORTH CAROLINA  
DIVISION OF HIGHWAYS

PROJECT REFERENCE NO.  
43669 SHEET NO.  
1-B

# CONVENTIONAL PLAN SHEET SYMBOLS

## BOUNDARIES AND PROPERTY:

State Line	-----
County Line	-----
Township Line	-----
City Line	-----
Reservation Line	-----
Property Line	-----
Existing Iron Pin	⊙
Property Corner	⊗
Property Monument	⊠
Parcel/Sequence Number	Ⓜ
Existing Fence Line	---x---x---x---
Proposed Woven Wire Fence	---o---o---
Proposed Chain Link Fence	---□---□---
Proposed Barbed Wire Fence	---◇---◇---
Existing Wetland Boundary	---W---
Proposed Wetland Boundary	---W---
Existing Endangered Animal Boundary	---UA---
Existing Endangered Plant Boundary	---UP---
Known Soil Contamination: Area or Site	☠ ☠
Potential Soil Contamination: Area or Site	☠ ☠

## BUILDINGS AND OTHER CULTURE:

Gas Pump Vent or U/G Tank Cap	○
Sign	⊙
Well	⊙
Small Mine	⊗
Foundation	⊠
Area Outline	⊠
Cemetery	⊠
Building	⊠
School	⊠
Church	⊠
Dam	⊠

## HYDROLOGY:

Stream or Body of Water	-----
Hydro, Pool or Reservoir	⊠
Jurisdictional Stream	---JS---
Buffer Zone 1	---BZ 1---
Buffer Zone 2	---BZ 2---
Flow Arrow	←
Disappearing Stream	-----
Spring	⊙
Wetland	---W---
Proposed Lateral, Tail, Head Ditch	---L---
False Sump	⊠

## RAILROADS:

Standard Gauge	-----
RR Signal Milepost	⊙
Switch	⊠
RR Abandoned	-----
RR Dismantled	-----

## RIGHT OF WAY:

Baseline Control Point	◆
Existing Right of Way Marker	△
Existing Right of Way Line	-----
Proposed Right of Way Line	-----
Proposed Right of Way Line with Iron Pin and Cap Marker	⊙
Proposed Right of Way Line with Concrete or Granite R/W Marker	⊙
Proposed Control of Access Line with Concrete C/A Marker	⊙
Existing Control of Access	⊙
Proposed Control of Access	⊙
Existing Easement Line	-----
Proposed Temporary Construction Easement	-----
Proposed Temporary Drainage Easement	-----
Proposed Permanent Drainage Easement	-----
Proposed Permanent Drainage /Utility Easement	-----
Proposed Permanent Utility Easement	-----
Proposed Temporary Utility Easement	-----
Proposed Aerial Utility Easement	-----
Proposed Permanent Easement with Iron Pin and Cap Marker	◆

## ROADS AND RELATED FEATURES:

Existing Edge of Pavement	-----
Existing Curb	-----
Proposed Slope Stakes Cut	---C---
Proposed Slope Stakes Fill	---F---
Proposed Curb Ramp	Ⓢ
Existing Metal Guardrail	-----
Proposed Guardrail	-----
Existing Cable Guiderail	-----
Proposed Cable Guiderail	-----
Equality Symbol	⊙
Pavement Removal	⊠

## VEGETATION:

Single Tree	⊙
Single Shrub	⊙
Hedge	-----
Woods Line	-----

Orchard	⊙
Vineyard	⊙

## EXISTING STRUCTURES:

MAJOR:	
Bridge, Tunnel or Box Culvert	⊠
Bridge Wing Wall, Head Wall and End Wall	⊠
MINOR:	
Head and End Wall	⊠
Pipe Culvert	⊠
Footbridge	⊠
Drainage Box: Catch Basin, DI or JB	⊠
Paved Ditch Gutter	-----
Storm Sewer Manhole	⊙
Storm Sewer	-----

## UTILITIES:

POWER:	
Existing Power Pole	⊙
Proposed Power Pole	⊙
Existing Joint Use Pole	⊙
Proposed Joint Use Pole	⊙
Power Manhole	⊙
Power Line Tower	⊠
Power Transformer	⊠
H-Frame Pole	⊙
Recorded U/G Power Line	-----
Designated U/G Power Line (S.U.E.*)	-----

## TELEPHONE:

Existing Telephone Pole	⊙
Proposed Telephone Pole	⊙
Telephone Manhole	⊙
Telephone Booth	⊠
Telephone Pedestal	⊠
Telephone Cell Tower	⊙
U/G Telephone Cable Hand Hole	⊙
Recorded U/G Telephone Cable	-----
Designated U/G Telephone Cable (S.U.E.*)	-----
Recorded U/G Telephone Conduit	-----
Designated U/G Telephone Conduit (S.U.E.*)	-----
Recorded U/G Fiber Optics Cable	-----
Designated U/G Fiber Optics Cable (S.U.E.*)	-----

## WATER:

Water Manhole	⊙
Water Meter	⊙
Water Valve	⊙
Water Hydrant	⊙
Recorded U/G Water Line	-----
Designated U/G Water Line (S.U.E.*)	-----
Above Ground Water Line	-----

## TV:

TV Satellite Dish	⊙
TV Pedestal	⊙
TV Tower	⊙
U/G TV Cable Hand Hole	⊙
Recorded U/G TV Cable	-----
Designated U/G TV Cable (S.U.E.*)	-----
Recorded U/G Fiber Optic Cable	-----
Designated U/G Fiber Optic Cable (S.U.E.*)	-----

## GAS:

Gas Valve	⊙
Gas Meter	⊙
Recorded U/G Gas Line	-----
Designated U/G Gas Line (S.U.E.*)	-----
Above Ground Gas Line	-----

## SANITARY SEWER:

Sanitary Sewer Manhole	⊙
Sanitary Sewer Cleanout	⊙
U/G Sanitary Sewer Line	-----
Above Ground Sanitary Sewer	-----
Recorded SS Forced Main Line	-----
Designated SS Forced Main Line (S.U.E.*)	-----

## MISCELLANEOUS:

Utility Pole	⊙
Utility Pole with Base	⊙
Utility Located Object	⊙
Utility Traffic Signal Box	⊠
Utility Unknown U/G Line	-----
U/G Tank; Water, Gas, Oil	⊠
Underground Storage Tank, Approx. Loc.	⊠
A/G Tank; Water, Gas, Oil	⊠
Geoenvironmental Boring	⊙
U/G Test Hole (S.U.E.*)	⊙
Abandoned According to Utility Records	AATUR
End of Information	E.O.I.

STATE OF NORTH CAROLINA  
DIVISION OF HIGHWAYS

**ALIGNMENT AND CONTROL DESCRIPTIONS**

Beginning chain L description

Point 2000  
N 51,710.8204 E 2,131,519.2308 Sta 10+00.00

Course from 2000 to PC L\_C1 N 63° 09' 45.20" E Dist 436.9878

Curve Data

\*-----\*

Curve L\_C1

P.I. Station N 52,000.4247 E 2,132,091.6201 16+41.48

Delta = 9° 21' 09.14" (LT)

Degree = 2° 17' 30.59"

Tangent = 204.4950

Length = 408.0815

Radius = 2,500.0000

External = 8.3497

Long Chord = 407.6286

Mid. Ord. = 8.3219

P.C. Station N 51,908.1033 E 2,131,909.1511 14+36.99

P.T. Station N 52,121.1718 E 2,132,256.6606 18+45.07

C.C. N 54,138.8307 E 2,130,780.4991

Back = N 63° 09' 45.20" E

Ahead = N 53° 48' 36.06" E

Chord Bear = N 58° 29' 10.63" E

Course from PT L\_C1 to PC L\_C2 N 53° 48' 36.06" E Dist 1,847.4059

Control Point	North	East	Station	Elevation
1	51533.056	2130179.93	5+00.00	50.53
2	51495.649	2130871.569	11+92.65	50.00
3	55504.203	2137374.693	88+59.34	47.94
4	55600.246	2137854.241	93+48.41	49.1
100	51714.2206	2131470.055	18+29.80	50.62
101	52010.5441	2132046.969	24+78.36	51.46
102	52374.0398	2132642.054	31+75.68	52.75

Curve Data

\*-----\*

Curve L\_C2

P.I. Station N 53,437.7315 E 2,134,056.1714 40+74.77

Delta = 4° 22' 43.15" (RT)

Degree = 0° 34' 22.65"

Tangent = 382.2956

Length = 764.2191

Radius = 10,000.0000

External = 7.3048

Long Chord = 764.0331

Mid. Ord. = 7.2995

P.C. Station N 53,211.9995 E 2,133,747.6345 36+92.48

P.T. Station N 53,639.2487 E 2,134,381.0418 44+56.69

C.C. N 45,141.3640 E 2,139,652.2803

Back N 53° 48' 36.06" E

Ahead N 58° 11' 19.21" E

Chord Bear N 55° 59' 57.64" E

Course from PT L\_C2 to 2003 N 58° 11' 19.21" E Dist 1,788.5776

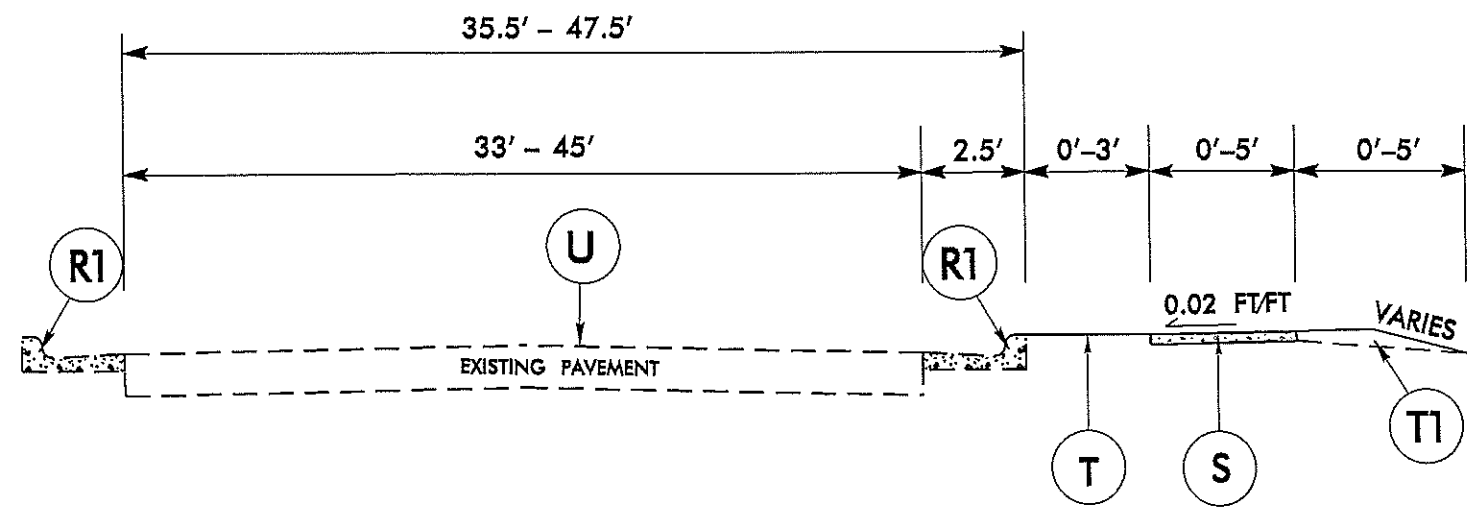
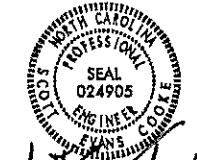
Point 2003 N 54,582.0506 E 2,135,900.9544 Sta 62+45.27

Ending chain L description

Control Point	North	East	Station	Elevation
103	52929.9713	2133324.225	40+55.69	51.46
104	53349.5356	2133902.582	47+70.21	52.2
105	53713.8658	2134452.924	54+30.22	51.62
106	54117.8848	2135109.367	62+01.03	51.07
107	54507.267	2135728.383	69+32.33	50.51
108	54902.1346	2136472.127	77+74.39	47.87
200	52110.3967	2131738.5329	8+08.97	51.48
201	52405.6873	2131647.603	5+00.00	50.37

8/17/99

C:\Users\jw3669\Cad\Projects\132669\_Calabash\132669\_Calabash\_Sideview\132669\_Calabash\_Sideview.dgn  
 C:\Users\jw3669\Cad\Projects\132669\_Calabash\132669\_Calabash\_Sideview\132669\_Calabash\_Sideview.dgn  
 C:\Users\jw3669\Cad\Projects\132669\_Calabash\132669\_Calabash\_Sideview\132669\_Calabash\_Sideview.dgn



**TYPICAL SECTION NO. 1**  
 NC 179 (BEACH DRIVE SW)  
 -L- STA. 10+76.58 TO 59+47.27

PAVEMENT SCHEDULE	
R1	EXISTING CONCRETE 2'-6" CURB & GUTTER
S	PROPOSED 4" CONCRETE SIDEWALK
T	GRASS STRIP
T1	EARTH MATERIAL
U	EXISTING PAVEMENT

**NOT TO SCALE**

9/17/13

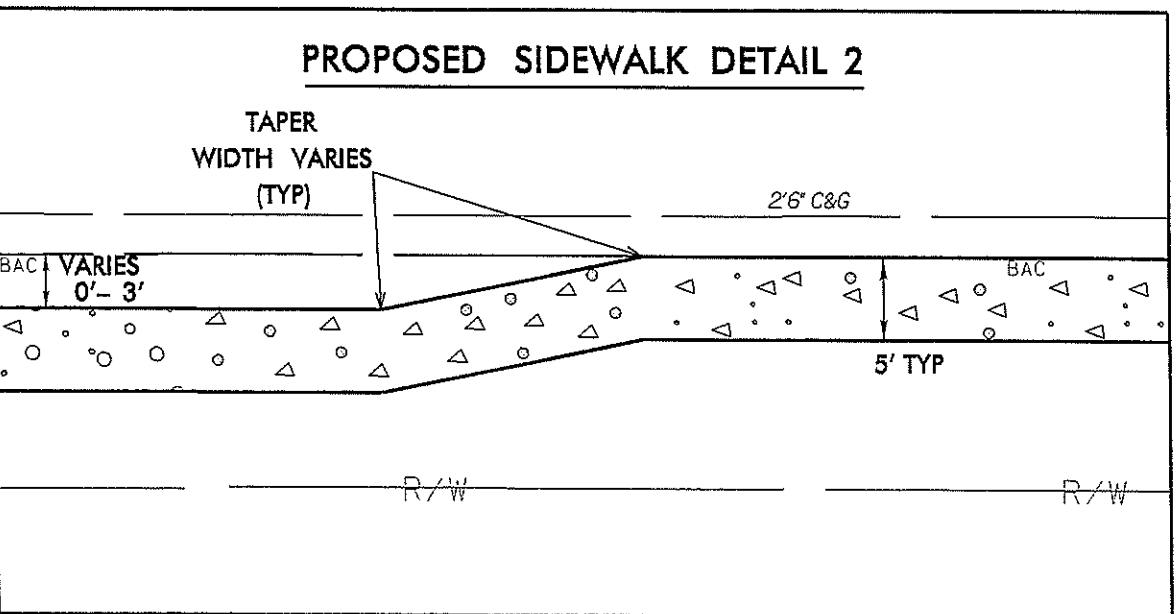
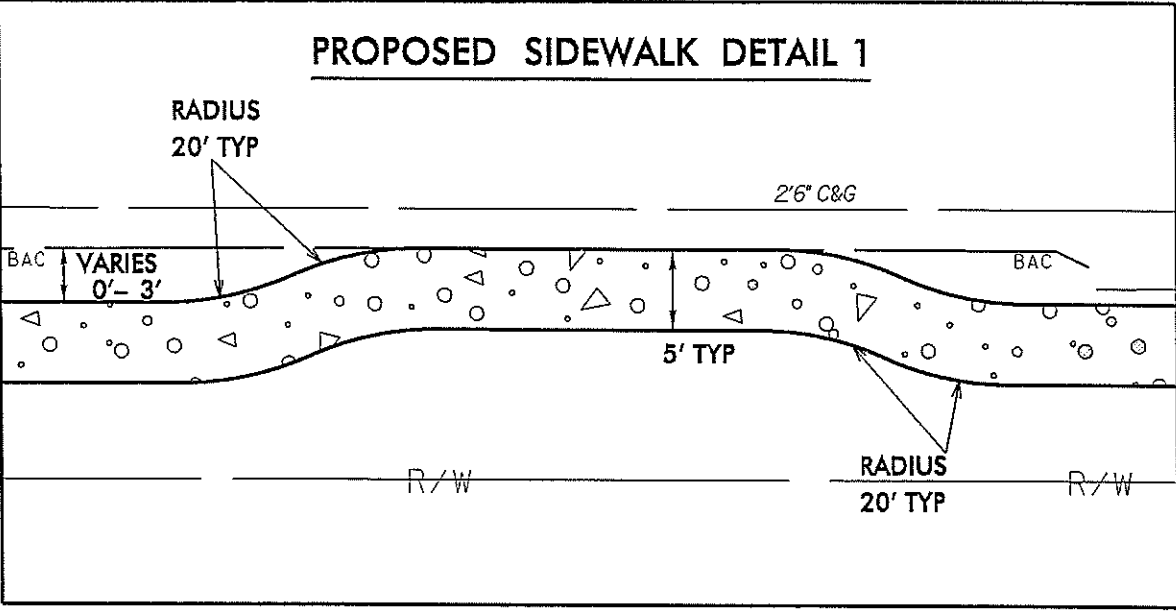
I:\OCT-2013\_09\44\_03\PROJECTS\THREE\13\BRUNSWICK\13669\_01\PARAPH\13\13669\_01\RD04WAY\Proj\43669\_RdJ\_TYPICAL\_(s.dewalk)\_2012.dgn

DIVISION OF HIGHWAYS  
STATE OF NORTH CAROLINA

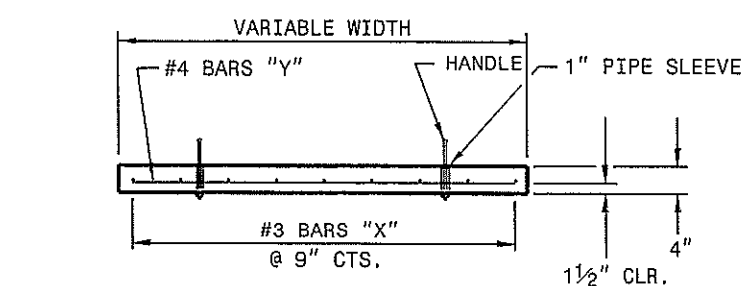
---



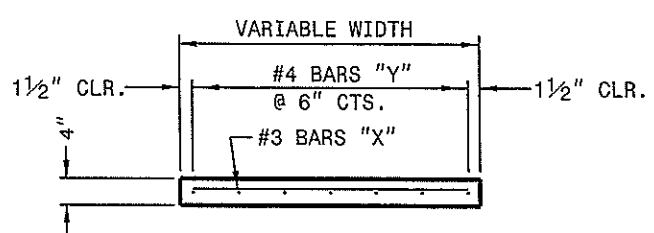
---



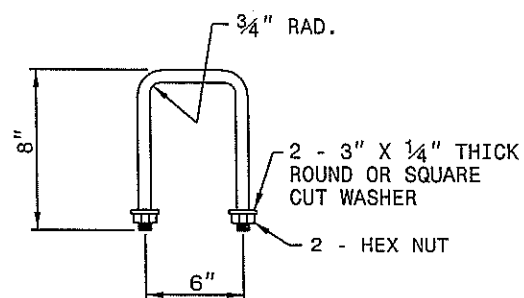
NTS



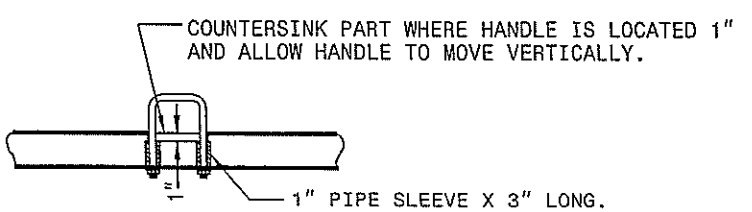
**SECTION V-V**



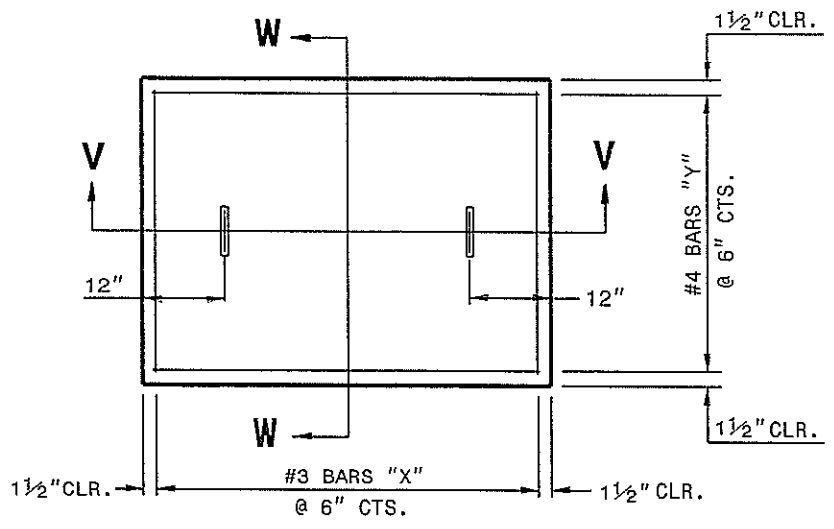
**SECTION W-W**



**DETAIL OF HANDLE**

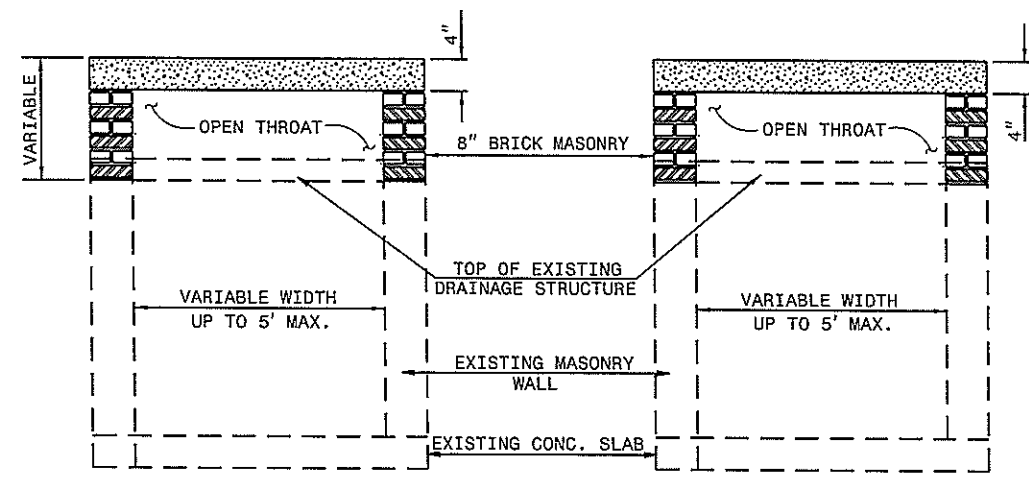


**PART SECTION THRU COVER SHOWING HANDLE**



**PLAN**

PRECAST OR CAST IN PLACE TOP SLAB



**SECTION W-W**

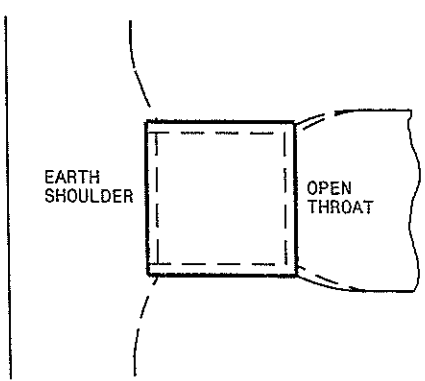
**SECTION V-V**

GENERAL NOTES:  
 CONSTRUCT IN ACCORDANCE WITH SECTION 859 OF THE STANDARD SPECIFICATIONS.  
 THE DIMENSIONS FOR THE EXISTING BOXES ARE APPROXIMATE AND MAY VARY SLIGHTLY.  
 DETAIL INTENDED FOR NON-TRAFFIC BEARING DRAINAGE STRUCTURES.

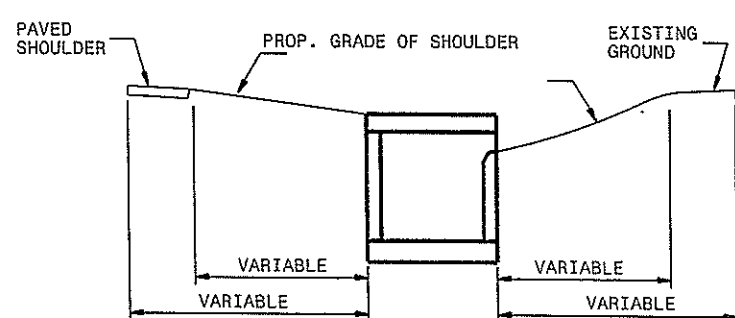
BILL OF MATERIALS				
REINFORCING STEEL				
CODE	SIZE	QTY.	LENGTH	REINF. STEEL lbs.
X	#3	9	3'-1"	10.4
Y	#4	7	4'-1"	19.1
TOTAL				29.5 *
MASONRY				CY
TOP SLAB CONCRETE CLASS "B"				0.1783 *
BRICK MASONRY PER FT HT (MIN)				0.3127 *

NO DEDUCTIONS HAVE BEEN TAKEN FOR OPEN THROAT OPENINGS

\* NOTE:  
 QUANTITIES BASED ON 3'-0" X 2'-0" DRAINAGE STRUCTURE. ADJUST QUANTITIES FOR LARGER STRUCTURES.



**PLAN OF CATCH BASIN**



**SECTION OF CATCH BASIN**

DETAIL SHOWING METHOD OF PLACING CATCH BASIN AND PAVED SHOULDER GUTTER IN MEDIAN STRIP

CONTRACT STANDARDS AND DEVELOPMENT UNIT  
 Office 919-707-6950 FAX 919-250-4119

**DETAIL TO CONVERT EXISTING DRAINAGE BOX TO OPEN THROAT CATCH BASIN**

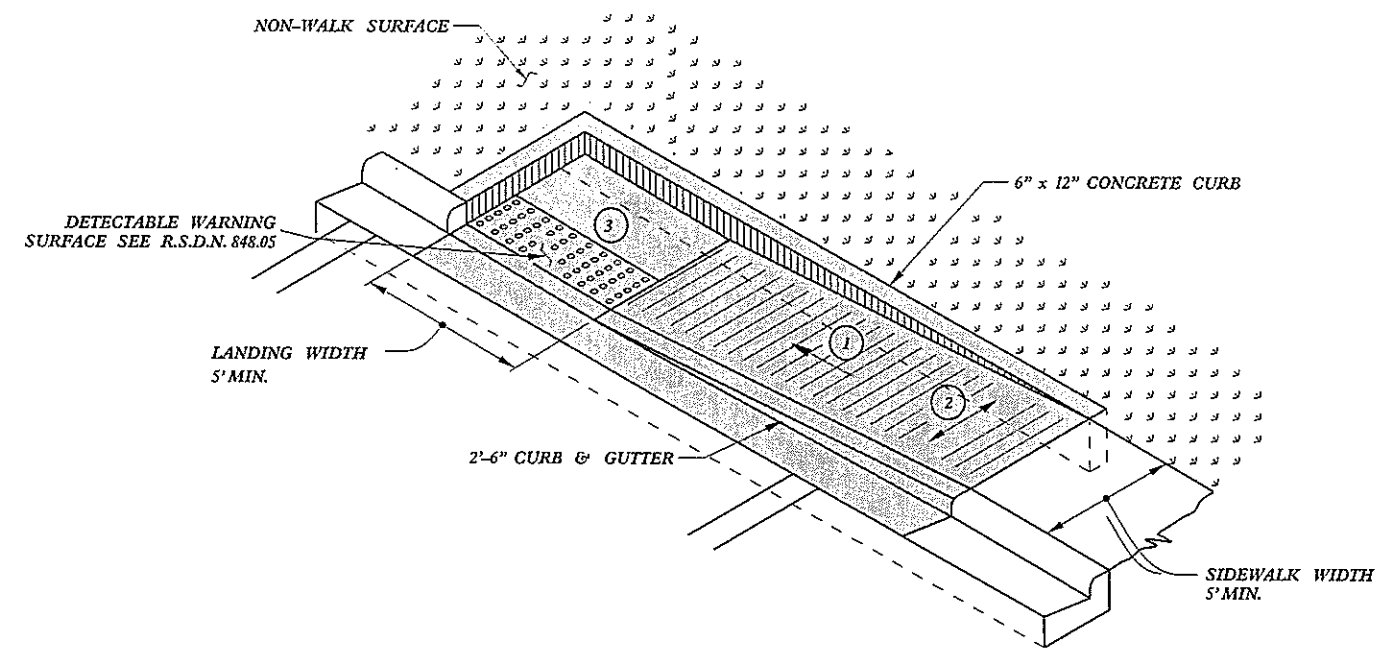
ORIGINAL BY: E.E. WARD DATE: 9-02-03  
 MODIFIED BY: DATE:  
 CHECKED BY: DATE:  
 FILE SPEC.: s:\usr\detail\stand\cbto openthr.dgn

5/14/03

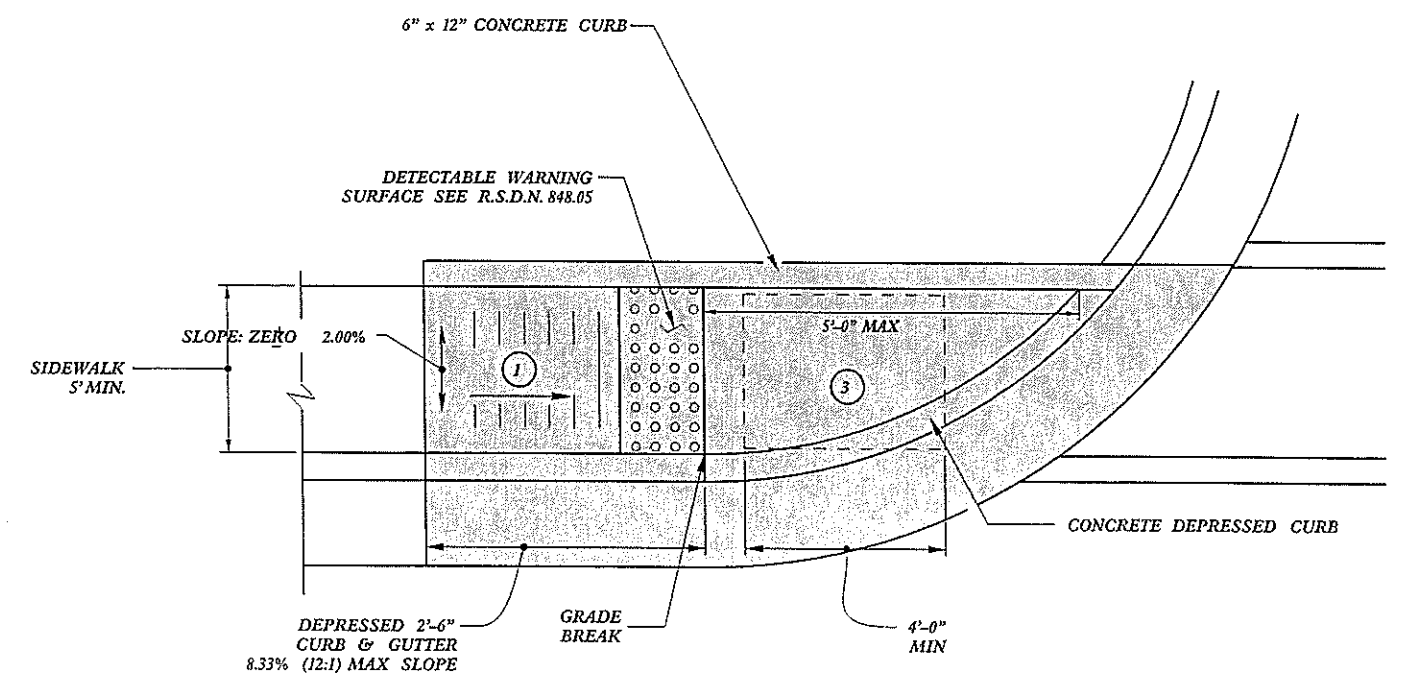




PAY LIMITS FOR CURB RAMP



**TYPE 1A**



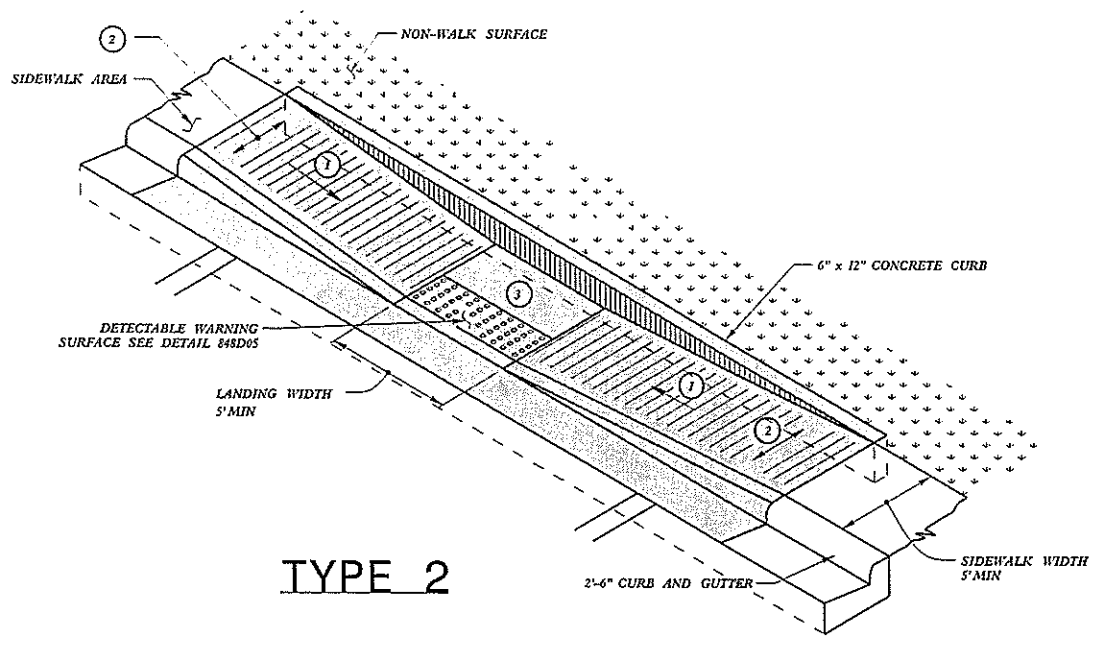
**TYPE 1**

- ① 8.33% (12:1) MAX RAMP SLOPE
- ② CROSS SLOPE: 2.00%
- ③ CURB RAMPS REQUIRE A (4'-0") MINIMUM LANDING WITH A MAXIMUM CROSS SLOPE AND LONGITUDINAL SLOPE OF 2.00% WHERE PEDESTRIANS PERFORM TURNING MANEUVERS. SLOPE TO DRAIN TO CURB.

REFER TO ROADWAY STANDARD DRAWING NUMBER 848.05 SHEET 3 OF 3 FOR ALL RAMP NOTES

CONTRACT STANDARDS AND DEVELOPMENT UNIT	
Office 919-707-6950	FAX 919-250-4119
<b>CURB RAMPS</b>	
Directional Ramps	
ORIGINAL BY: J.S. HOWERTON	DATE: 7/7/11
MODIFIED BY:	DATE:
CHECKED BY:	DATE:
FILE SPEC: stds/2012CurbRamp/CurbRampDetails.dwg	

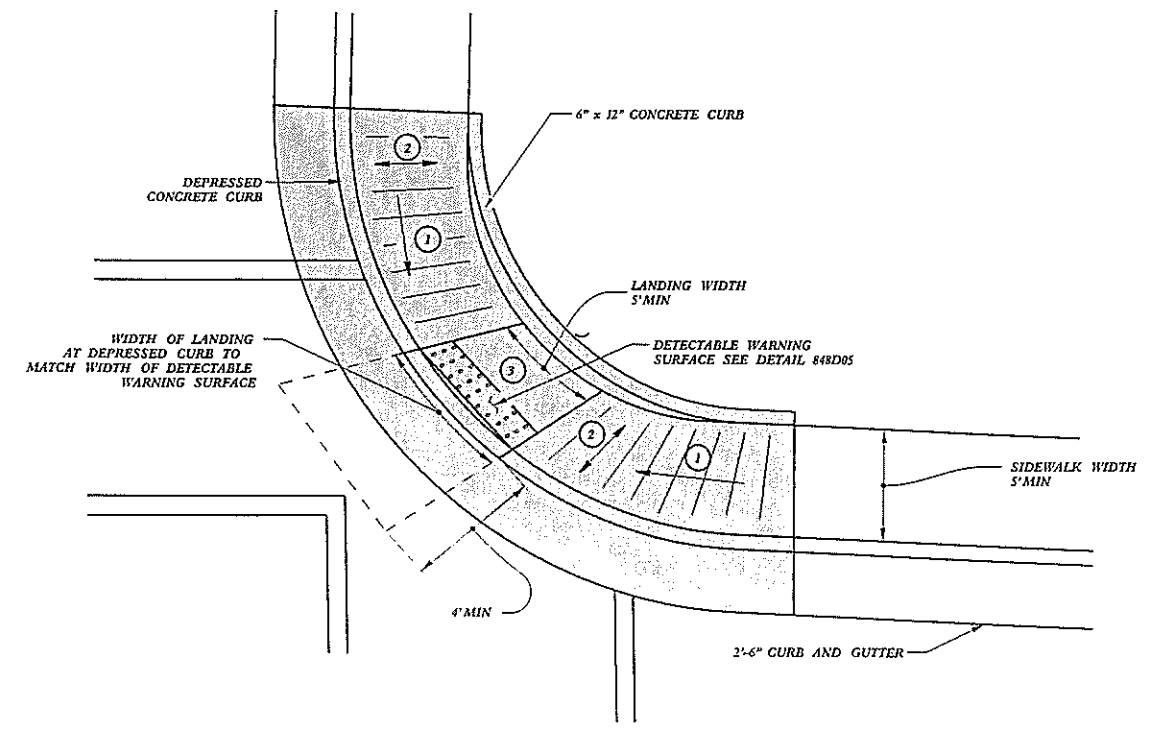
5/14/09  
 22-JAN-2012 15:06  
 J:\Users\jshoverton\Standard Drawings\2012 Standard Drawings\Curb Ramp Special Details\Curb Ramp Details.dgn  
 jshoverton



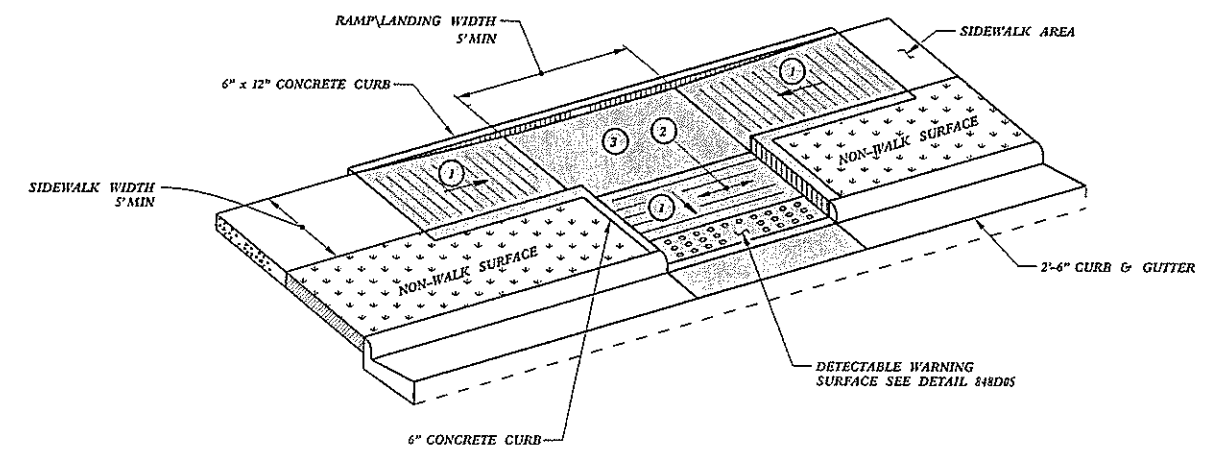
**TYPE 2**

**PAY LIMITS FOR CURB RAMP**

- ① 8.33% (12:1) MAX RAMP SLOPE
- ② CROSS SLOPE: 2.00%
- ③ CURB RAMPS REQUIRE A (4'-0") MINIMUM LANDING WITH A MAXIMUM CROSS SLOPE AND LONGITUDINAL SLOPE OF 2.00% WHERE PEDESTRIANS PERFORM TURNING MANEUVERS. SLOPE TO DRAIN TO CURB.



**TYPE 2A**



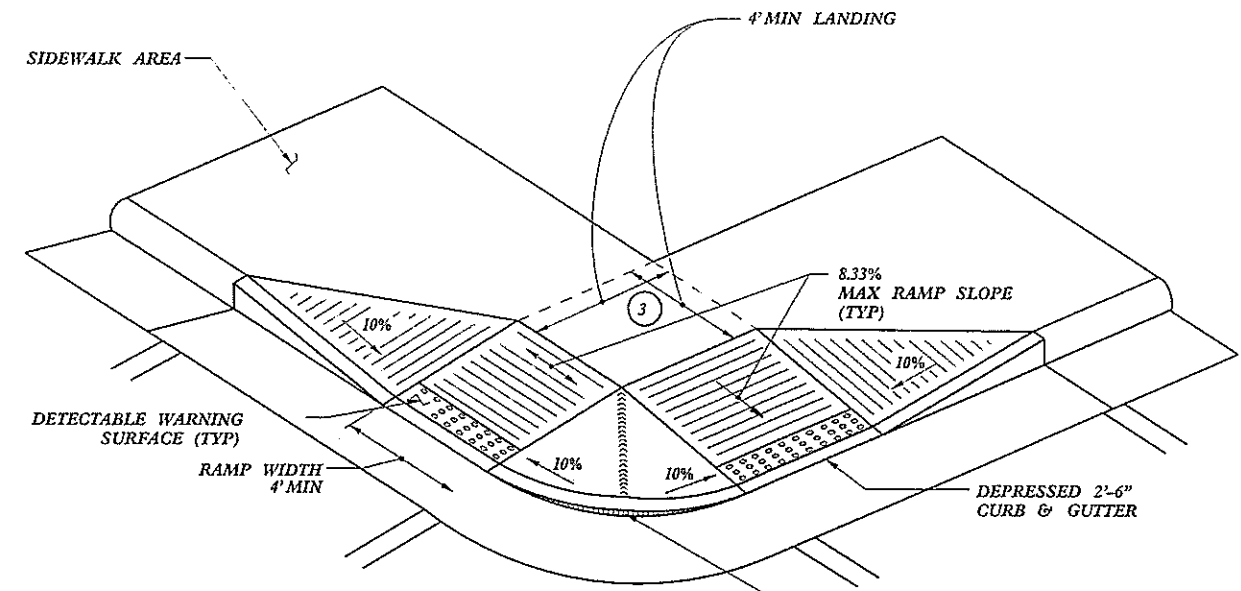
**TYPE 3**

5/11/09  
 S:\Contracts\2012\Standard Drawings\2012 Standard Drawings\Curb Ramp Special Details\Curb Ramp Details.dgn  
 J:\Projects\2012\Standard Drawings\2012 Standard Drawings\Curb Ramp Special Details\Curb Ramp Details.dgn  
 J:\Projects\2012\Standard Drawings\2012 Standard Drawings\Curb Ramp Special Details\Curb Ramp Details.dgn

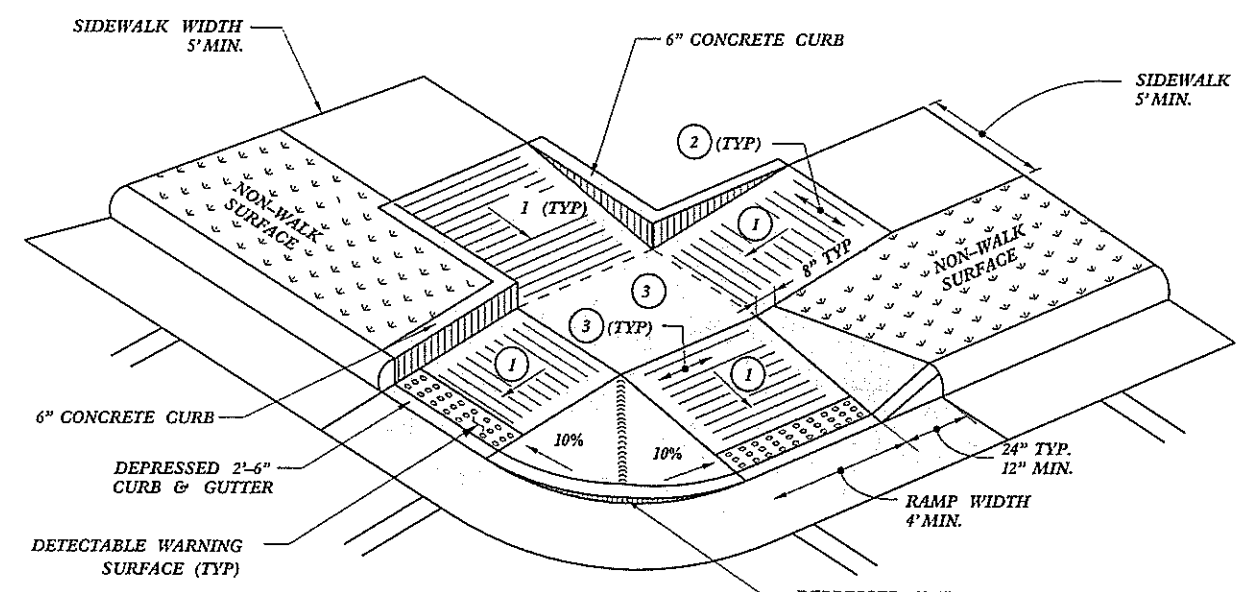
REFER TO ROADWAY STANDARD DRAWING NUMBER 848.05 SHEET 3 OF 3 FOR ALL RAMP NOTES

<b>CONTRACT STANDARDS AND DEVELOPMENT UNIT</b> Office 919-707-6950 FAX 919-250-4119	
<b>CURB RAMPS</b> Parallel Ramps	
ORIGINAL BY: J.S. HOWERTON	DATE: 7/7/11
MODIFIED BY:	DATE:
CHECKED BY:	DATE:
FILE SPEC: s1d6/2012CurbRamp/09CurbRampDetails.dgn	

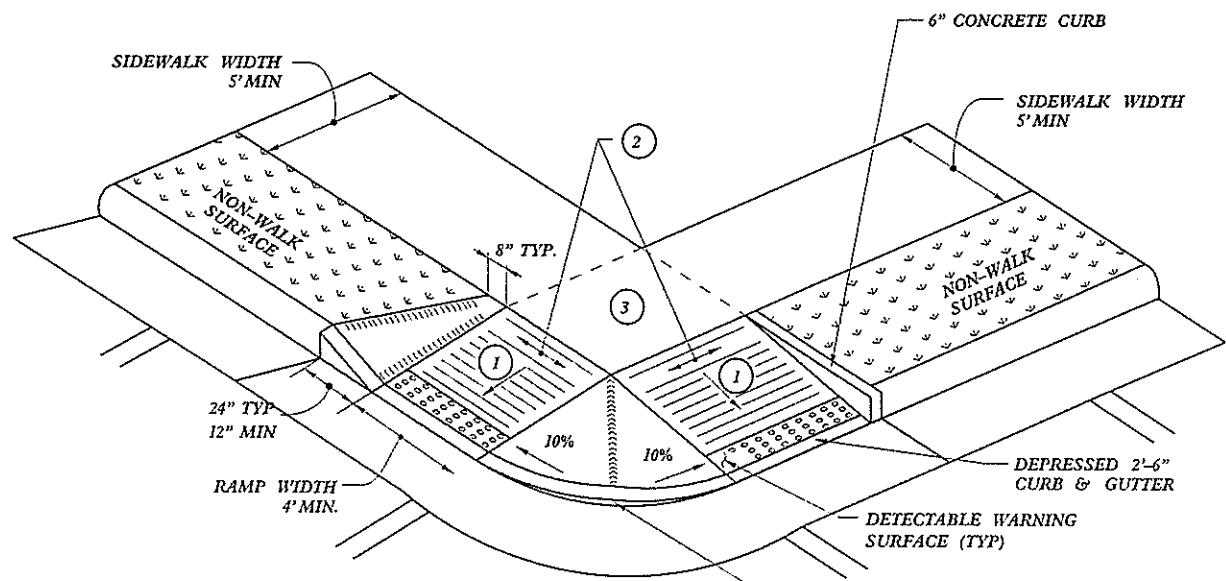
PAY LIMITS FOR CURB RAMP



TYPE 4



TYPE 5



TYPE 4A

- 1 8.33% (12:1) MAX RAMP SLOPE
- 2 CROSS SLOPE: 2.00%
- 3 CURB RAMPS REQUIRE A (4'-0") MINIMUM LANDING WITH A MAXIMUM CROSS SLOPE AND LONGITUDINAL SLOPE OF 2.00% WHERE PEDESTRIANS PERFORM TURNING MANEUVERS. SLOPE TO DRAIN TO CURB.

<b>CONTRACT STANDARDS AND DEVELOPMENT UNIT</b>	
Office 919-707-6950 FAX 919-250-4119	
<b>CURB RAMPS</b>	
Shared Landing	
ORIGINAL BY: J.S. HOWERTON	DATE: 7/7/11
MODIFIED BY:	DATE:
CHECKED BY:	DATE:
FILE SPEC: stds/2012CurbRamp/CurbRampDetails.dwg	

REFER TO ROADWAY STANDARD DRAWING NUMBER 848.05 SHEET 3 OF 3 FOR ALL RAMP NOTES

5/11/09  
22-MAR-2012 15:08  
S:\Centros\A\CS123356  
Standard Drawings\2012 Standard Drawings\2012 Curb Ramp Special Details\Curb Ramp Details.dgn  
J.Howerton

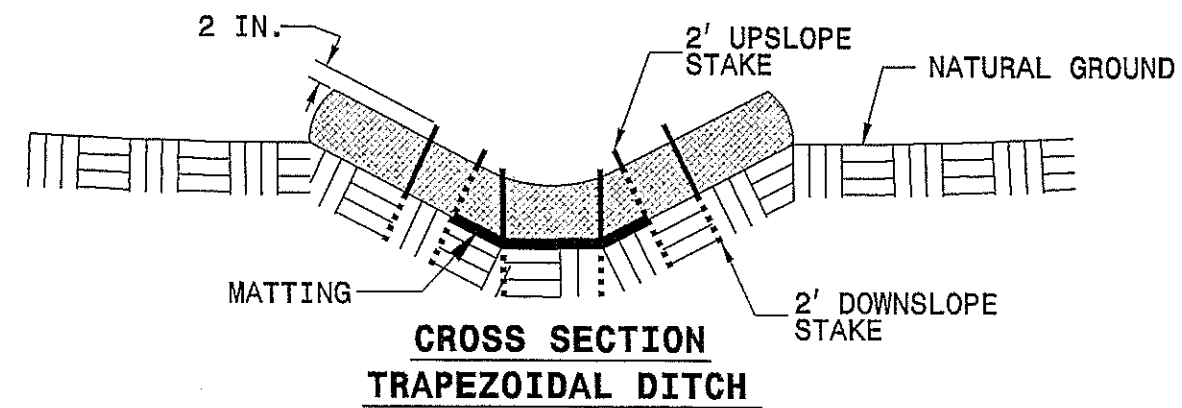
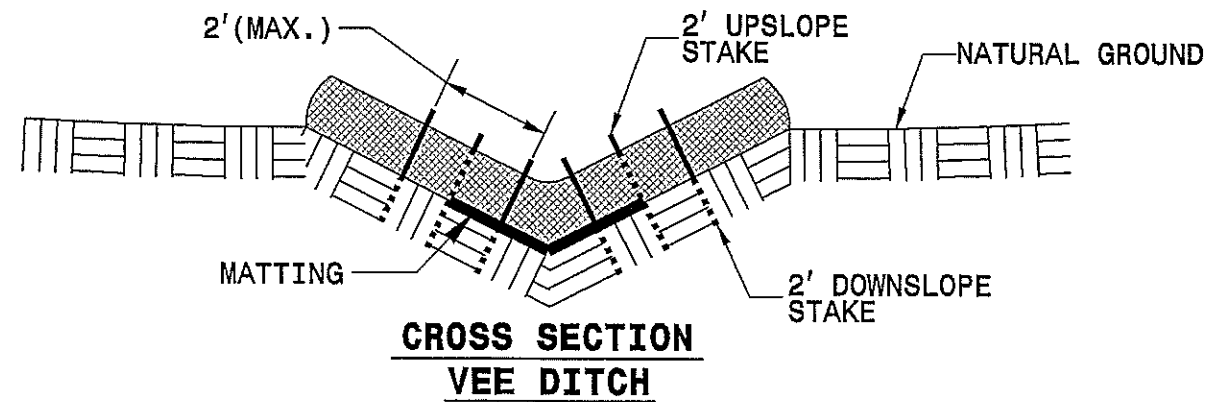
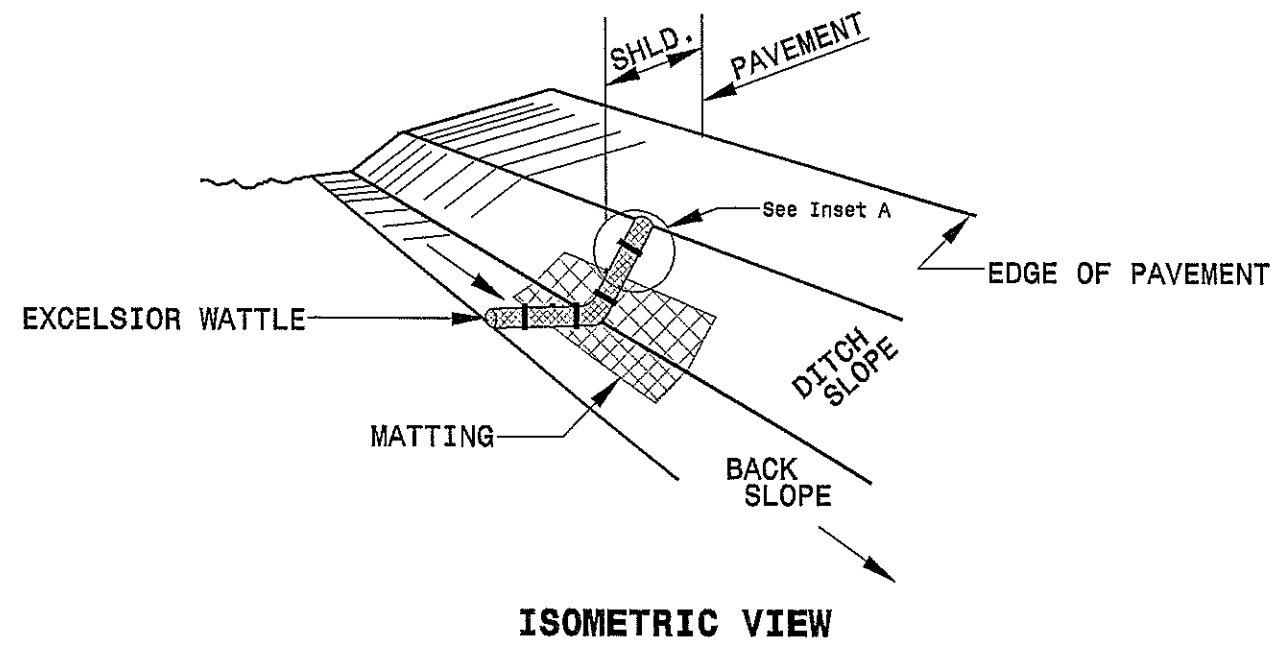


DIVISION OF HIGHWAYS  
STATE OF NORTH CAROLINA

# ***SOIL STABILIZATION TIMEFRAMES***

<i>SITE DESCRIPTION</i>	<i>STABILIZATION TIME</i>	<i>TIMEFRAME EXCEPTIONS</i>
PERIMETER DIKES, SWALES, DITCHES AND SLOPES	7 DAYS	NONE
HIGH QUALITY WATER (HQW) ZONES	7 DAYS	NONE
SLOPES STEEPER THAN 3:1	7 DAYS	IF SLOPES ARE 10' OR LESS IN LENGTH AND ARE NOT STEEPER THAN 2:1, 14 DAYS ARE ALLOWED.
SLOPES 3:1 OR FLATTER	14 DAYS	7 DAYS FOR SLOPES GREATER THAN 50' IN LENGTH.
ALL OTHER AREAS WITH SLOPES FLATTER THAN 4:1	14 DAYS	NONE, EXCEPT FOR PERIMETERS AND HQW ZONES.

# WATTLE DETAIL



**NOTES:**

USE MINIMUM 12 IN. DIAMETER EXCELSIOR WATTLE.

USE 2 FT. WOODEN STAKES WITH A 2 IN. BY 2 IN. NOMINAL CROSS SECTION.

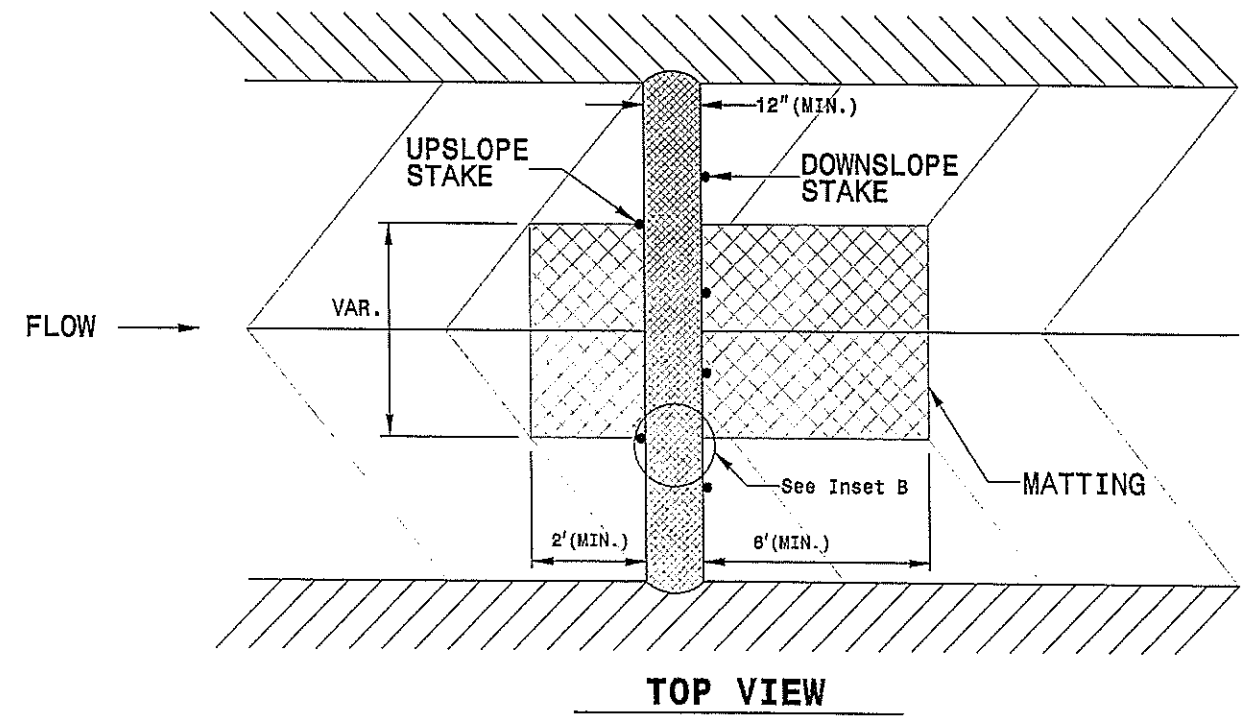
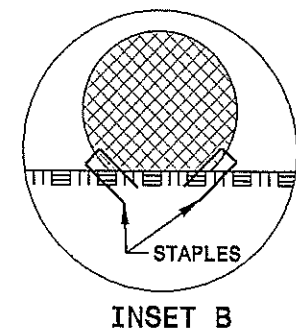
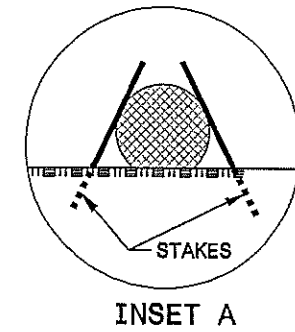
ONLY INSTALL WATTLE(S) TO A HEIGHT IN DITCH SO FLOW WILL NOT WASH AROUND WATTLE AND SCOUR DITCH SLOPES AND AS DIRECTED.

INSTALL A MINIMUM OF 2 UPSLOPE STAKES AND 4 DOWNSLOPE STAKES AT AN ANGLE TO WEDGE WATTLE TO BOTTOM OF DITCH.

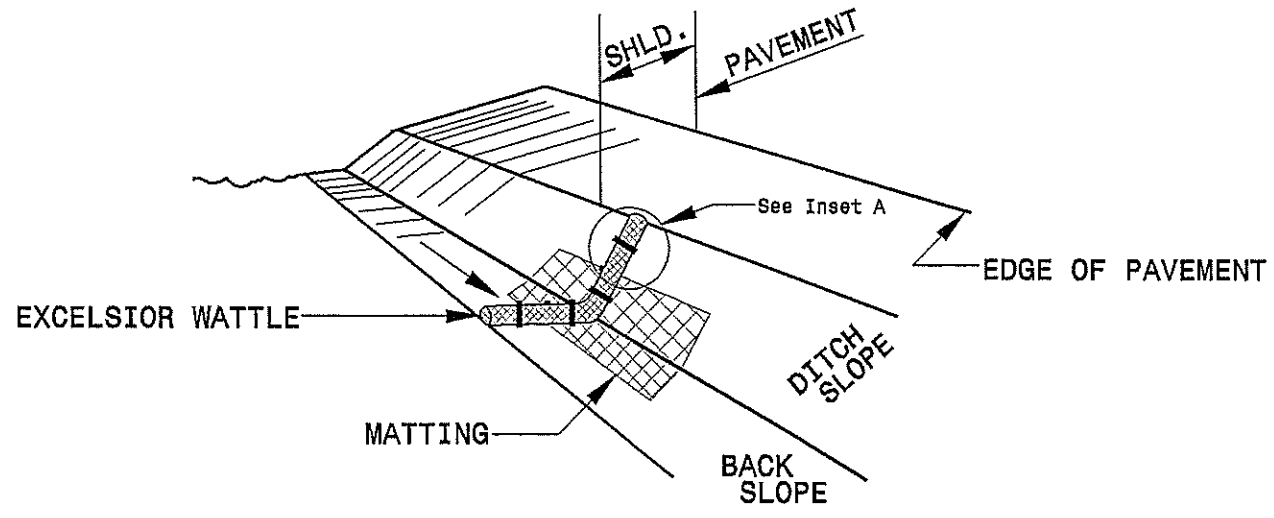
PROVIDE STAPLES MADE OF 0.125 IN. DIAMETER STEEL WIRE FORMED INTO A U SHAPE NOT LESS THAN 12" IN LENGTH.

INSTALL STAPLES APPROXIMATELY EVERY 1 LINEAR FOOT ON BOTH SIDES OF WATTLE AND AT EACH END TO SECURE IT TO THE SOIL.

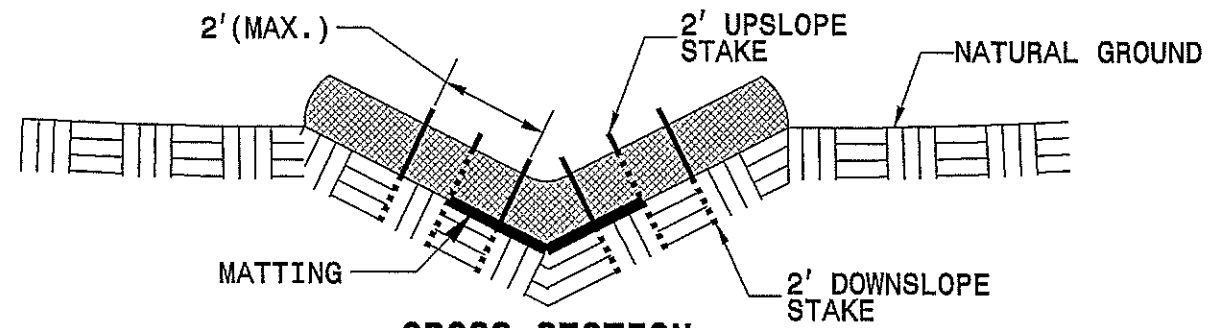
INSTALL MATTING IN ACCORDANCE WITH SECTION 1631 OF THE STANDARD SPECIFICATIONS.



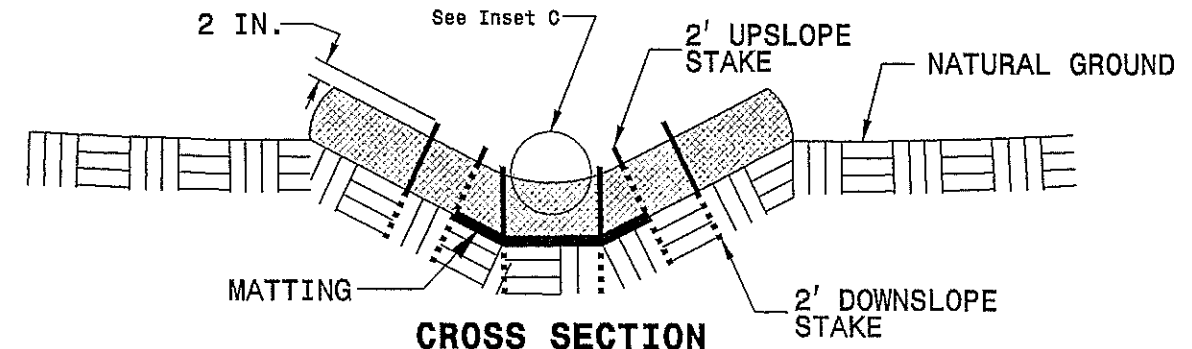
# WATTLE WITH POLYACRYLAMIDE (PAM) DETAIL



**ISOMETRIC VIEW**



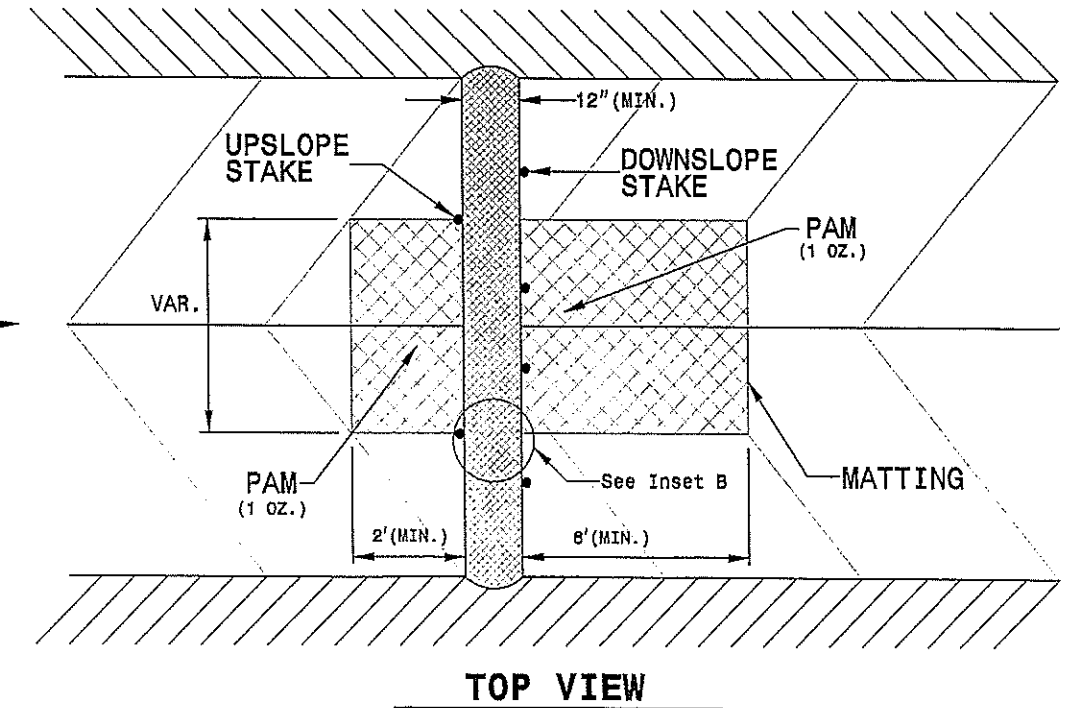
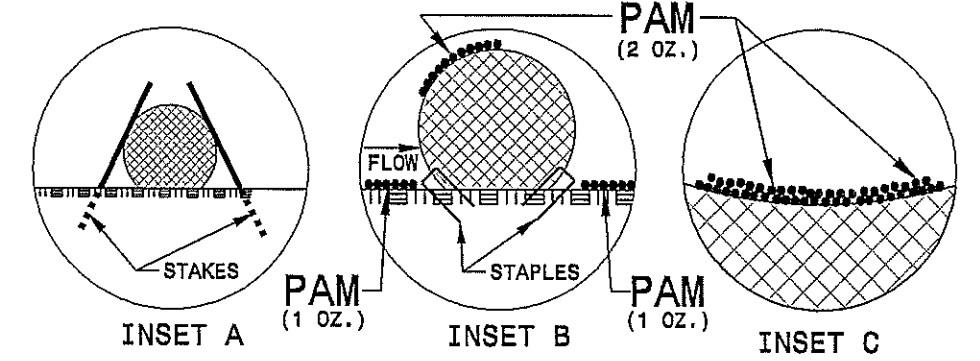
**CROSS SECTION VEE DITCH**



**CROSS SECTION TRAPEZOIDAL DITCH**

**NOTES:**

- USE MINIMUM 12 IN. DIAMETER EXCELSIOR WATTLE.
- USE 2 FT. WOODEN STAKES WITH A 2 IN. BY 2 IN. NOMINAL CROSS SECTION.
- ONLY INSTALL WATTLE(S) TO A HEIGHT IN DITCH SO FLOW WILL NOT WASH AROUND WATTLE AND SCOUR DITCH SLOPES AND AS DIRECTED.
- INSTALL A MINIMUM OF 2 UPSLOPE STAKES AND 4 DOWNSLOPE STAKES AT AN ANGLE TO WEDGE WATTLE TO BOTTOM OF DITCH.
- PROVIDE STAPLES MADE OF 0.125 IN. DIAMETER STEEL WIRE FORMED INTO A U SHAPE NOT LESS THAN 12" IN LENGTH.
- INSTALL STAPLES APPROXIMATELY EVERY 1 LINEAR FOOT ON BOTH SIDES OF WATTLE AND AT EACH END TO SECURE IT TO THE SOIL.
- INSTALL MATTING IN ACCORDANCE WITH SECTION 1631 OF THE STANDARD SPECIFICATIONS.
- PRIOR TO POLYACRYLAMIDE (PAM) APPLICATION, OBTAIN A SOIL SAMPLE FROM PROJECT LOCATION, AND FROM OFFSITE MATERIAL, AND ANALYZE FOR APPROPRIATE PAM FLOCCULANT TO BE APPLIED TO EACH WATTLE.
- INITIALLY APPLY 2 OUNCES OF ANIONIC OR NEUTRALLY CHARGED PAM OVER WATTLE WHERE WATER WILL FLOW AND 1 OUNCE OF PAM ON MATTING ON EACH SIDE OF WATTLE. REAPPLY PAM AFTER EVERY RAINFALL EVENT THAT IS EQUAL TO OR EXCEEDS 0.50 IN.



**TOP VIEW**

PROJECT NO.	SHEET NO.	TOTAL NO.
43669	3	

**SUMMARY OF QUANTITIES**

PROJECT NO.	COUNTY	MAP NO.	ROUTE	DESCRIPTION	TYP	LANES	LANE TYPE	FINAL SURFACE TESTING REQUIRED	WARM MIX ASPHALT REQUIRED	LENGTH FT	WIDTH FT	INCIDENTAL STONE BASE TONS	FRAME WITH TWO GRATES, STD 840.29 EA	CONVERT DROP INLET TO OPEN THROAT CATCH BASIN EA	4" CONCRETE SIDEWALK SY	CONCRETE CURB RAMP EA	6" CONCRETE SIDEWALK SY	REMOVE & REPLACE CURB RAMP EA	ADJUSTMENT OF METER OR VALVE BOX EA	PEDESTRIAN SAFETY RAIL LF	TEMPORARY SILT FENCE LF	STONE FOR EROSION CONTROL CLASS A TON	STONE FOR EC CLASS B TON	SEDIMENT CONTROL STONE TON	TEMPORARY MULCHING ACR	SILT EXCAVATION CY	MATTING FOR EROSION CONTROL SY	1/4" HARDWARE CLOTH LF	WATTLE LF	POLYACRYLAMIDE (PAM) LB	SEED & MULCHING AC	SEED FOR REPAIR SEEDING LB	FERTILIZER FOR REPAIR SEEDING TON
43669	Brunswick	1	NC 179 SIDEWALK (PROJECT WIDE)	SIDEWALK, NC 179 FROM RIVER VIEW DR. TO SR 1164 (CLARIDAY RD.) -L- STA. 10+76 TO STA. 59+48		2	NO	NO		4873	5	90	2	7	2,100	16	250	1	2	42	4,305	246	45	165	0.90	18	100	135	30	10	0.90	45	0.50
TOTAL FOR MAP NO. 1										4873		90	2	7	2,100	16	250	1	2	42	4,305	246	45	165	0.90	18	100	135	30	10	0.90	45	0.50
TOTAL FOR PROJ NO. 43669										4873		90	2	7	2,100	16	250	1	2	42	4,305	246	45	165	0.90	18	100	135	30	10	0.90	45	0.50
GRAND TOTAL										4873		90	2	7	2,100	16	250	1	2	42	4,305	246	45	165	0.90	18	100	135	30	10	0.90	45	0.50



LIST OF PIPES, ENDWALLS, ETC. (FOR PIPES 48" & UNDER)

Table with columns for Station, Location, Structure No., Top Elevation, Invert Elevation, Slope Critical, Pipe Size (12"-48"), Pipe Material (R.C.P., C.S.P.), Endwalls, Quantities (R.C.P., C.S.P.), Frame and Grates (E, F, G), and Remarks. Includes a list of abbreviations at the bottom right.