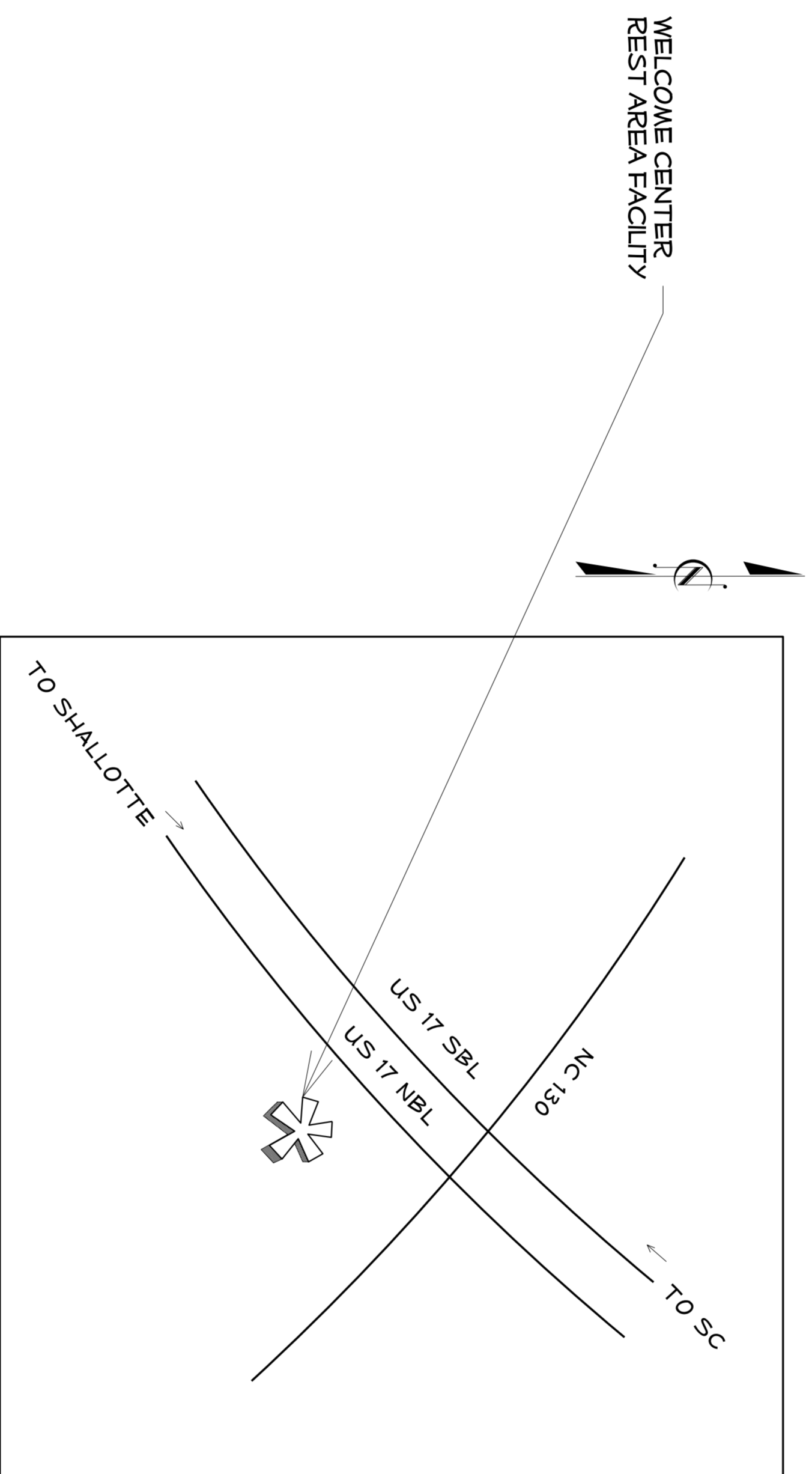


Brunswick County / US 17 Welcome Center - Rest Area Landscape Renovation

STATE OF NORTH CAROLINA
DIVISION OF HIGHWAYS
BRUNSWICK COUNTY

LOCATION: US 17 SOUTH OF SHALLOTTE US 17 NBL
TYPE OF WORK: LANDSCAPE PLANTING



VICINITY MAP

INDEX OF SHEETS

- L-1 TITLE SHEET
- L-2 SUMMARY OF QUANTITIES
- L-3 PLANTING DETAIL SHEET
- L-4 DEMOLITION PLAN
- L-5 LANDSCAPE SITE PLAN
- L-6 LANDSCAPE PLANTING PLAN
- L-7 LANDSCAPE PLANTING PLAN

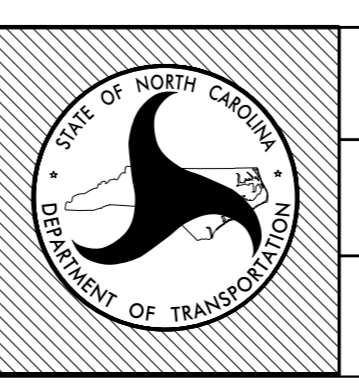
SITE / LANDSCAPE DESIGN
LANDSCAPE DESIGN & DEVELOPMENT
ROADSIDE ENVIRONMENTAL UNIT
1557 MAIL SERVICE CENTER
RALEIGH, NORTH CAROLINA 27699-1557
OFFICE (919) 707-2935 FAX (919) 715-2554

SITE / UTILITY DESIGN
REST AREA SECTION
ROADSIDE ENVIRONMENTAL UNIT
1557 MAIL SERVICE CENTER
RALEIGH, NORTH CAROLINA 27699-1557
OFFICE (919) 707-2935 FAX (919) 715-2554

ARCHITECTURAL / ENGINEERING

STATE	NC	T.D.P. #		SHEET #	1 of 7
PROJ. #	36059.30	F.A. Project #		Designation	P.E.
					R/W
					CONST.

North Carolina Department of Transportation
Division of Highways
1 South Wilmington Street Raleigh, North Carolina

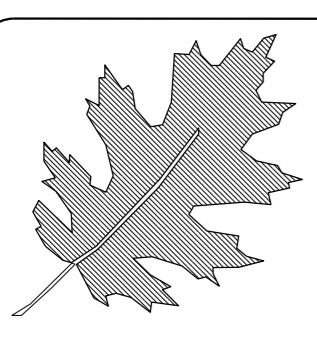


Plan :
**US 17
BRUNSWICK COUNTY
WELCOME CENTER- RA
LANDSCAPE RENOVATIONS**

Plans Drawn By:	R. Miner Sr.
Scale	1/4"
Date	9 / 30 / 12
Letting Date	2012
2006 Standard Specifications	
Sheet Description	TITLE SHEET
Sheet #	11 - 7

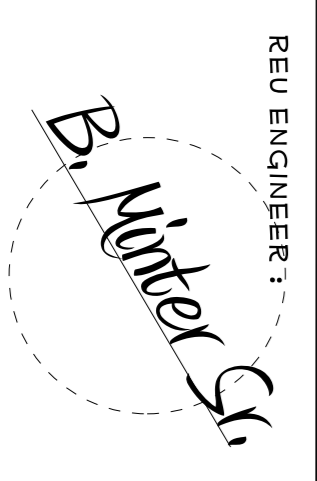
Summary of Quantities

Des	Sec	Qty.	Unit	Key	Botanical Name	Common Name	Size	Caliper	Furnish	A. S. N. S.	Remarks
L	1670	5	EA	AP	<i>Acer palmatum dissectum 'Crimson Queen'</i>	Crimson Queen Japanese Maple	3-4'		# 10 cont.	1.2.4	As Shown
L	1670	9	EA	AS	<i>Abelia grandiflora 'Sunrise'</i>	Sunrise Abelia	18-24"		# 3 cont.	4.2.3	As Shown
L	1670	205	EA	HH	<i>Hemerocallis 'Happy Returns'</i>	Happy Returns Daylily			# 1 cont.	12.2.3	As Shown
L	1670	5	EA	LR	<i>Lagerstroemia indica 'Red Rocket'</i>	Red Rocket Grape Myrtle	6-8'		B&B	2.2.4	As Shown
L	1670	167	EA	LV	<i>Liriope muscari 'Variegata'</i>	Variegated Liriope			# 1 cont.	12.5	As Shown
L	1670	5	EA	MG	<i>Magnolia grandiflora 'Little Gem'</i>	Little Gem Magnolia	5-6'		B&B	1.2.4	As Shown
L	1670	56	EA	NH	<i>Nandina domestica 'Harbor Dwarf'</i>	Harbor Dwarf Nandina	18-24"		# 3 cont.	4.2.2	As Shown
L	1670	350	EA	PA	<i>Pennisetum alopecuroides 'Hamel'</i>	Dwarf Fountain Grass			# 1 cont.	12.4	As Shown
L	1670	85	EA	PL	<i>Pennisetum alopecuroides 'Little Bunny'</i>	Little Bunny Dwarf Fountain Grass			# 1 cont.	12.4	As Shown
L	1670	6	EA	PC	<i>Pieris japonica 'Compacta'</i>	Dwarf Japanese Andromeda	24-30"		# 3 cont.	4.2	
L	1670	41	EA	RK	<i>Rosa x Knock - Out 'Radrazz'</i>	Red Knock Out Rose	18-24"		# 3 cont.	5.	
L	1670	21	EA	RE	<i>Raphiolepis umbellata 'Minor Gulf Green'</i>	Dwarf Yedda Hawthorn	18-24"		# 3 cont.	4.2	
L	1670	2	EA	TO	<i>Thuja occidentalis 'Rheingold'</i>	Rheingold Arborvitae	15"		# 10 cont.	3.2	
L	1670	63	CY		<i>Mulch for Planting</i>						
L	1670	21	M/G		<i>Water for Planting</i>						
L	1670	464	SY		<i>Existing Plant Bed Clean-up</i>						
L	1670	22	SY		<i>4" Concrete (Sidewalk)</i>						
L	1670	1530	LF		<i>Commercial Grade Steel Landscape Metal Edging 4" wide, 12 ga, Brown powder coat finish</i>						



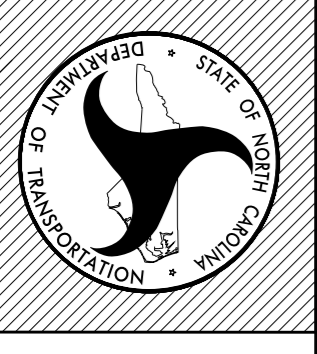
 NCDOT - ROADSIDE ENVIRONMENTAL UNIT
 LANDSCAPE DESIGN & DEVELOPMENT
 1557 MAIL SERVICE CENTER, RALEIGH, NC 27699-1557
 PH: 919-707-2920 FAX: 919-715-2554
 HTTP://WWW.NCDOT.ORG/DOH/OPERATIONS/DP_CHIEF_ENG/ROADSIDE/

US 17 BRUNSWICK COUNTY
 WELCOME CENTER
 PROJECT #: 36059.30

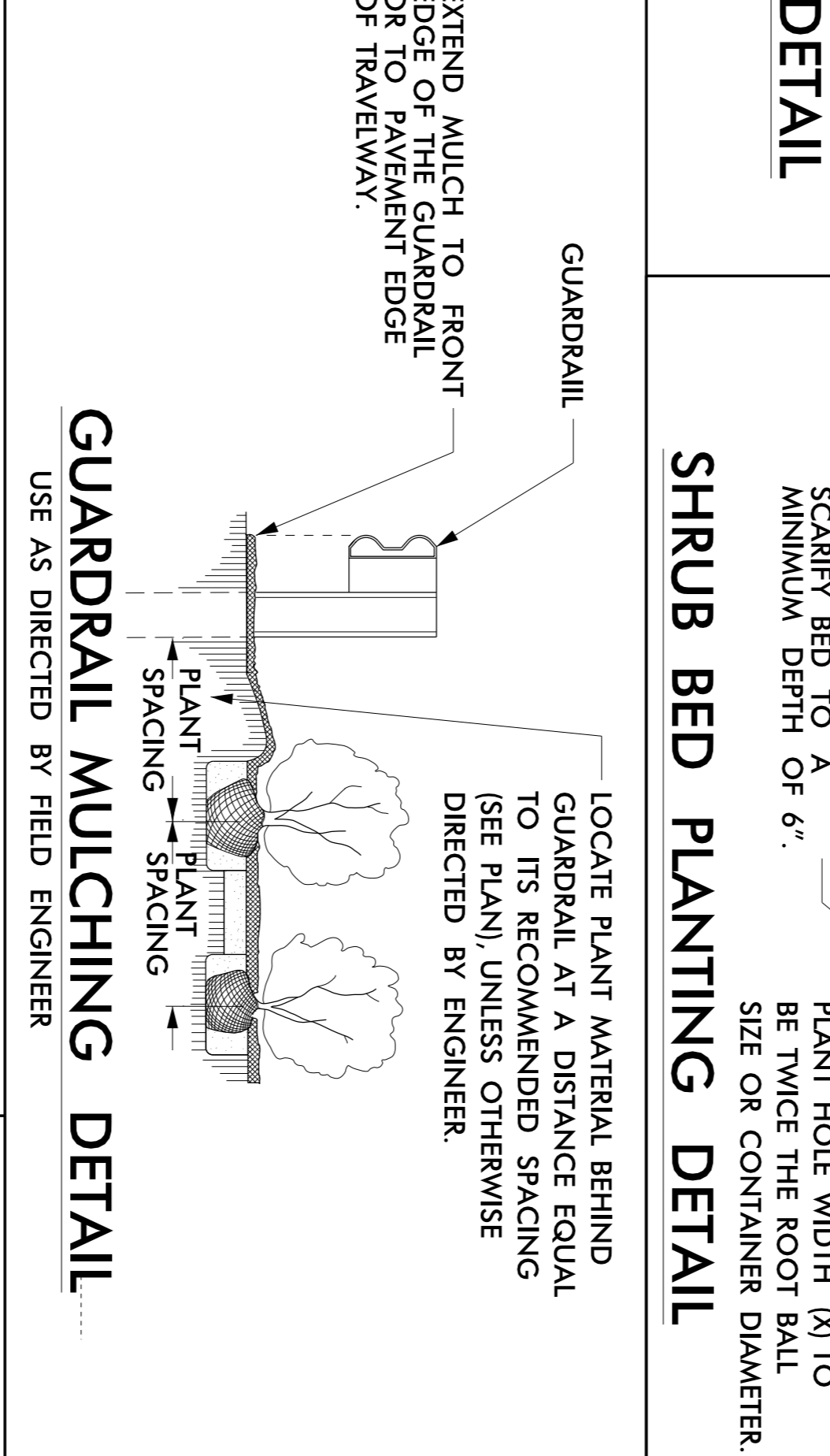
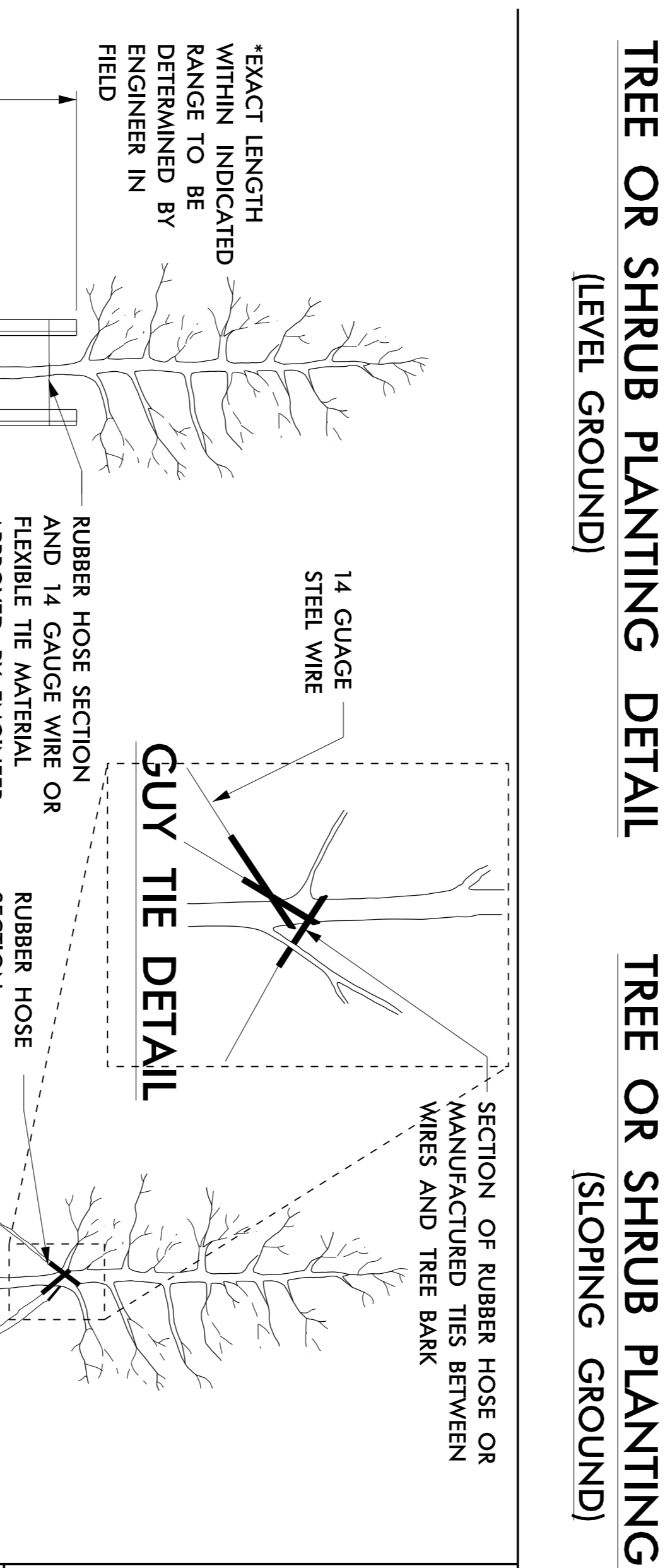
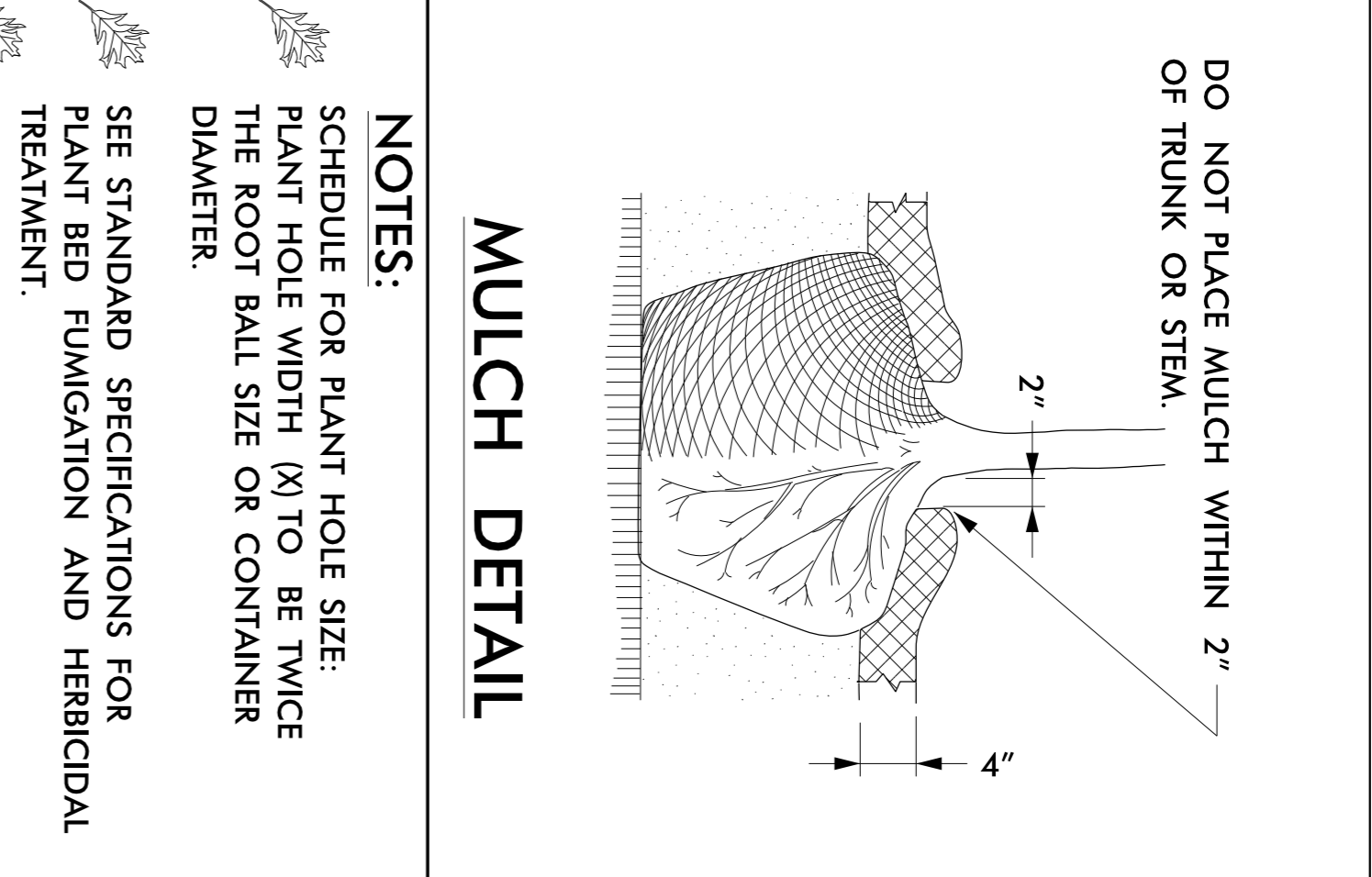
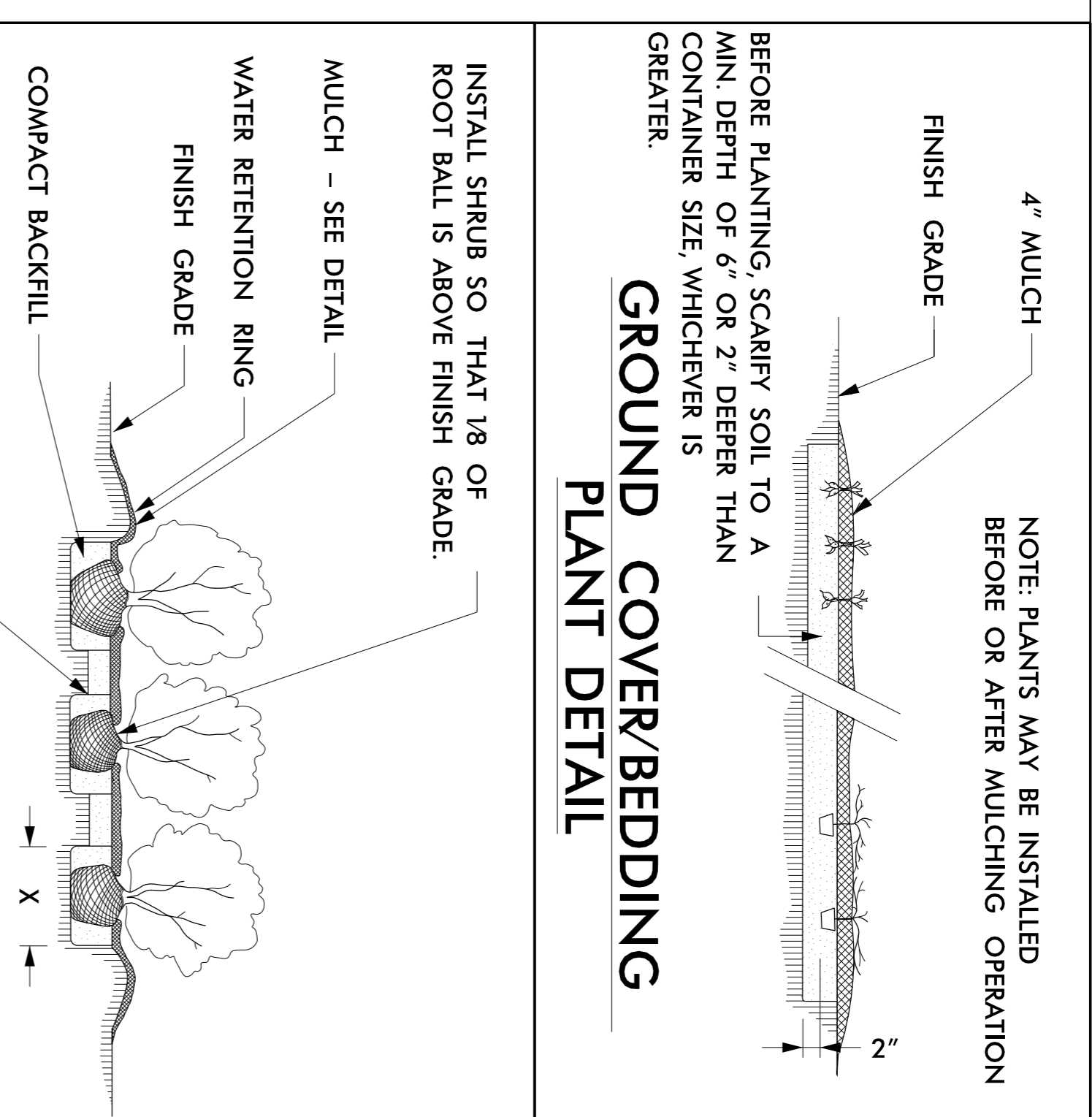
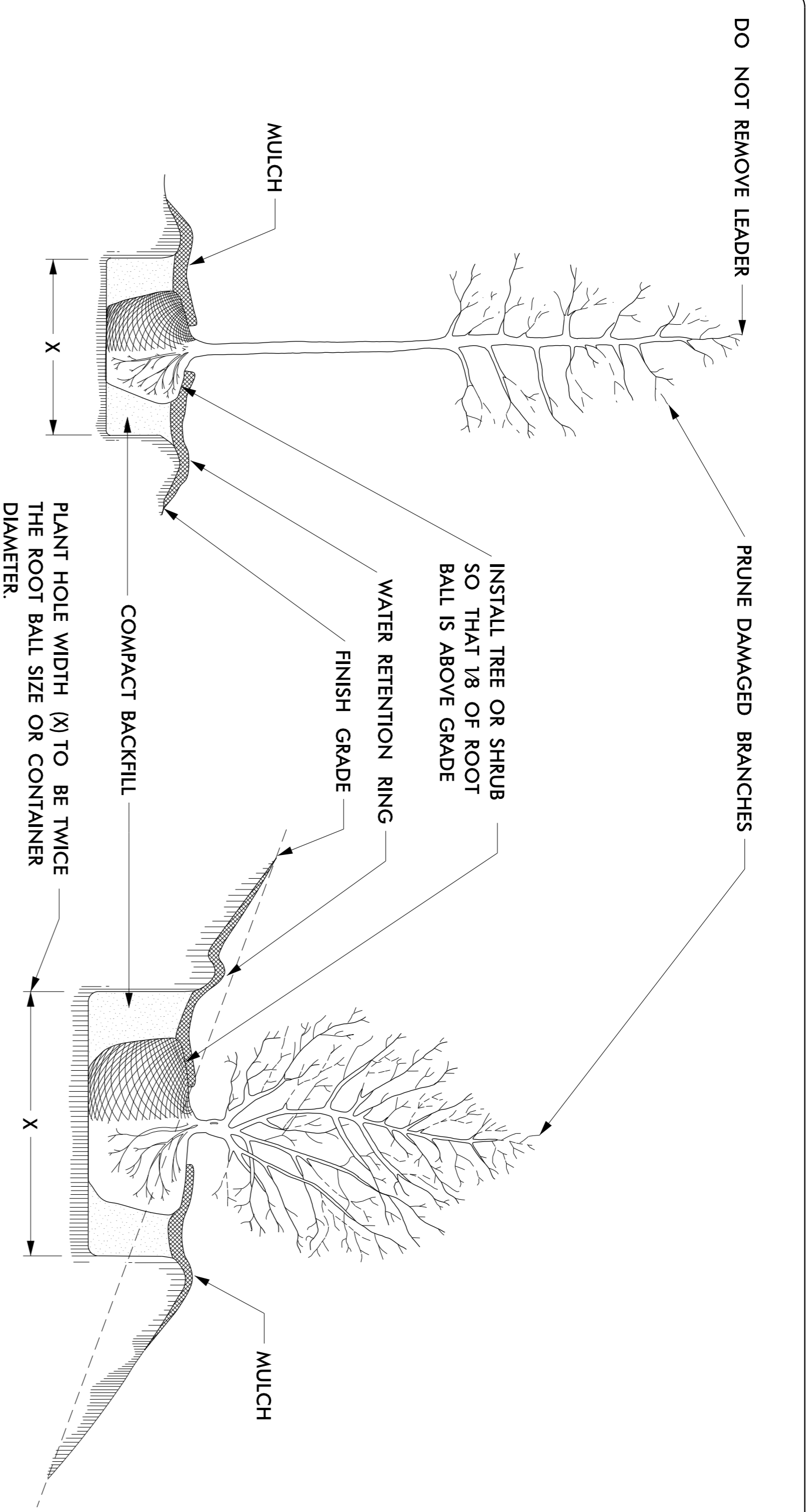
 REU ENGINEER:


SHEET DESCRIPTION:
 LANDSCAPE SUMMARY
 OF QUANTITIES
 REST AREA RENOVATION

PREL DESIGN DATE:
 AUG / 2012
 CHECKED BY & DATE:
 N. RING

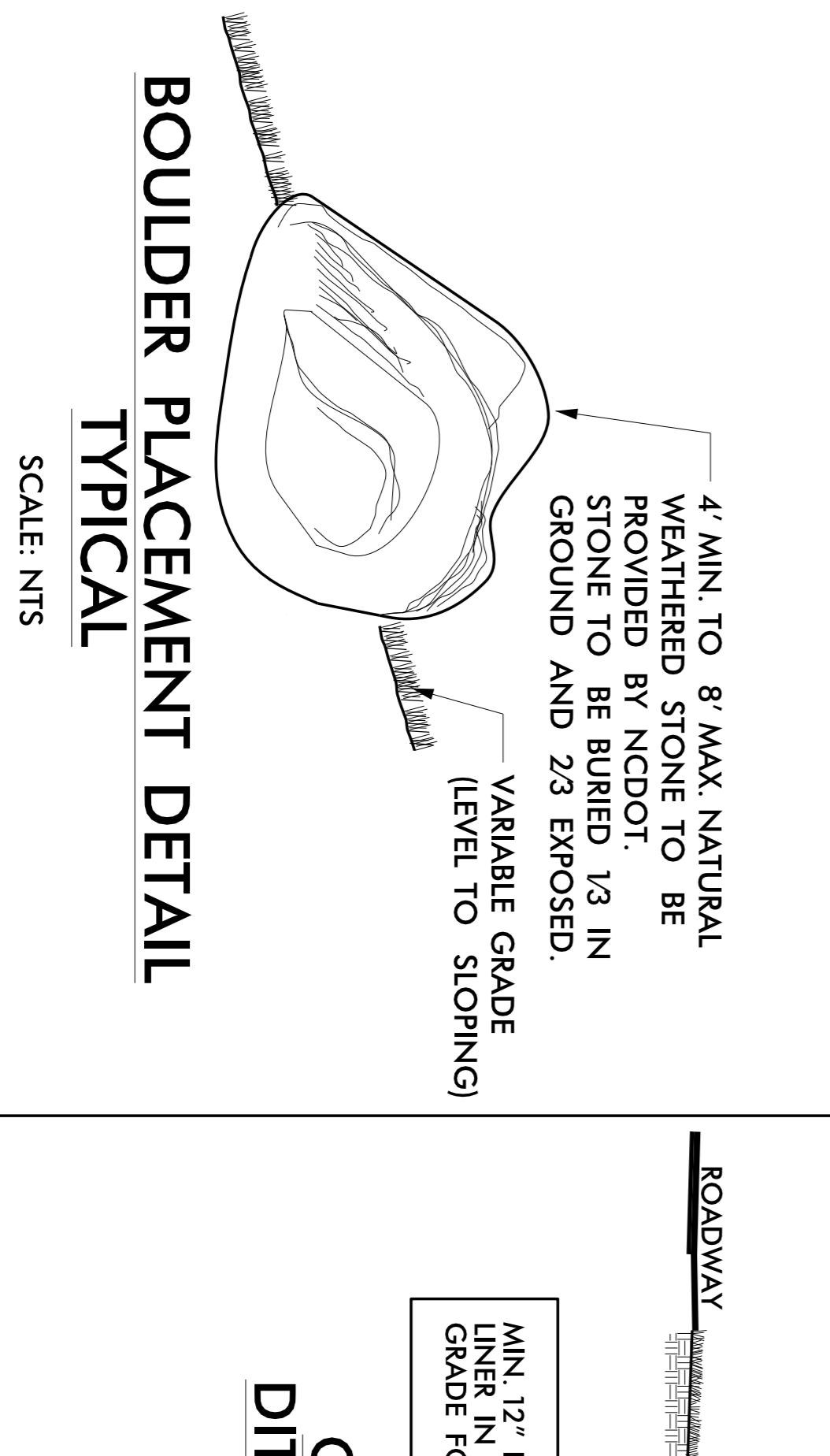
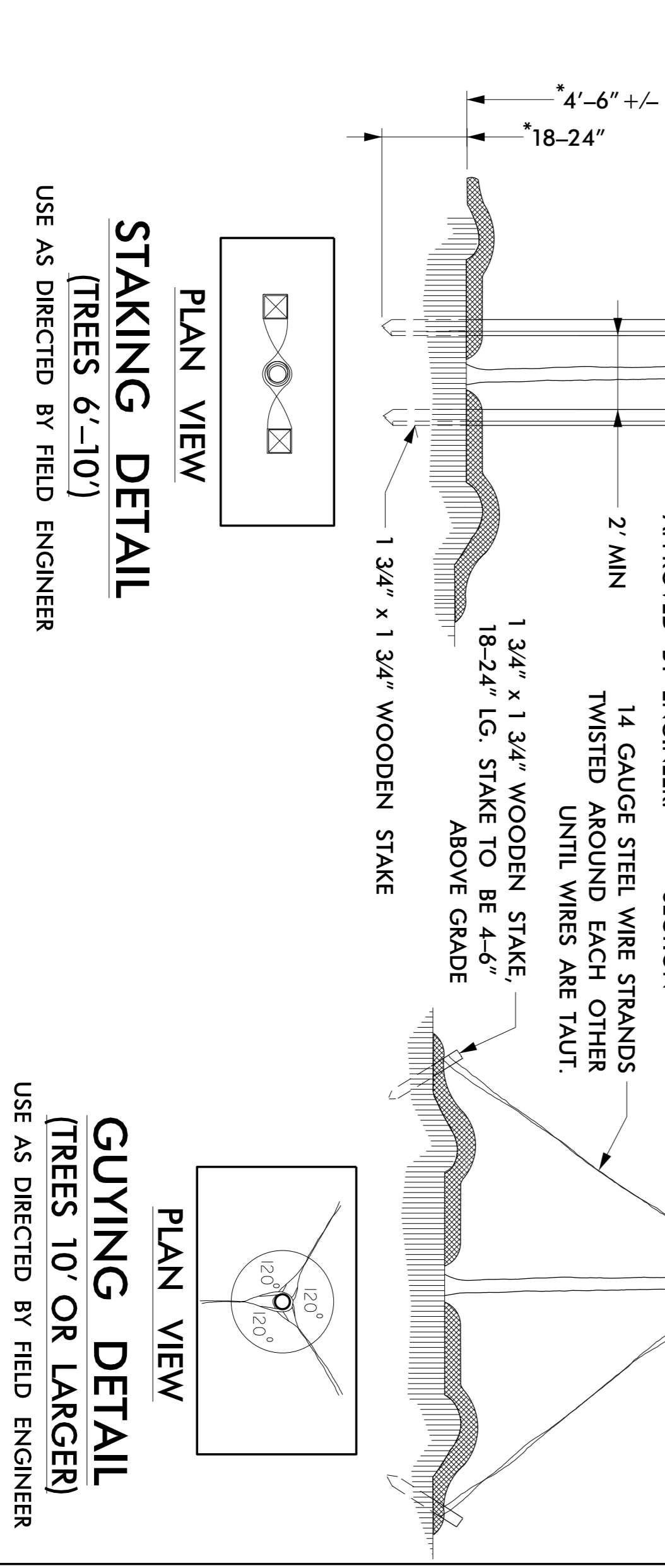


SHEET NO.:
L-2
 TOTAL SHEET NO.:
7



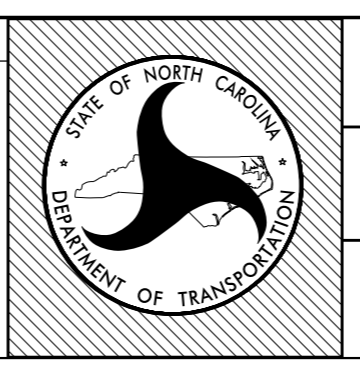
NOTES:

- SCHEDULE FOR PLANT HOLE SIZE: PLANT HOLE WIDTH (X) TO BE TWICE THE ROOT BALL SIZE OR CONTAINER DIAMETER.
- SEE STANDARD SPECIFICATIONS FOR PLANT BED FUMIGATION AND HERBICIDAL TREATMENT.
- APPLY FERTILIZER AT PLANTING TIME IN THE FORM OF A SLOW RELEASE PELLET OR TABLET. APPLY AT RATE RECOMMENDED BY MANUFACTURER. BOTH RATE AND FORMULATION MUST BE APPROVED BY FIELD ENGINEER PRIOR TO APPLICATION.
- REMOVE WIRE BASKET AND FOLD BURLAP BACK FROM TOP OF ROOT BALL BEFORE BACKFILLING IS COMPLETE.
- ALL PRUNING TO FOLLOW STANDARD ARBORICULTURAL PRACTICES AS SPECIFIED BY INTERNATIONAL SOCIETY OF ARBORICULTURE.
- DO NOT ATTEMPT TO STRAIGHTEN A TREE THAT HAS BEEN PLANTED AT AN ANGLE WITH THE USE OF STAKING OR GUYING. DIG TREE AND REPLANT TO UPRIGHT POSITION.



NOTES:

- APPLY FERTILIZER AT PLANTING TIME IN THE FORM OF A SLOW RELEASE PELLET OR TABLET. APPLY AT RATE RECOMMENDED BY MANUFACTURER. BOTH RATE AND FORMULATION MUST BE APPROVED BY FIELD ENGINEER PRIOR TO APPLICATION.
- REMOVE WIRE BASKET AND FOLD BURLAP BACK FROM TOP OF ROOT BALL BEFORE BACKFILLING IS COMPLETE.
- ALL PRUNING TO FOLLOW STANDARD ARBORICULTURAL PRACTICES AS SPECIFIED BY INTERNATIONAL SOCIETY OF ARBORICULTURE.
- DO NOT ATTEMPT TO STRAIGHTEN A TREE THAT HAS BEEN PLANTED AT AN ANGLE WITH THE USE OF STAKING OR GUYING. DIG TREE AND REPLANT TO UPRIGHT POSITION.





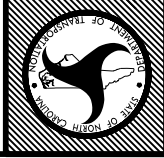
NC DOT - ROADSIDE ENVIRONMENTAL UNIT
 LANDSCAPE DESIGN & DEVELOPMENT
 1557 MAIL SERVICE CENTER, RALEIGH, NC 27699-1557
 PH: 919-707-2920 FAX: 919-715-2554
[HTTP://WWW.NCDOT.ORG/DOH/OPERATIONS/DP-CHIEF.ENG/ROADSIDE/](http://www.ncdot.org/DOH/OPERATIONS/DP-CHIEF.ENG/ROADSIDE/)

US 17 BRUNSWICK COUNTY
 WELCOME CENTER
 PROJECT #: 36059.30

REV ENGINEER: B. WINTER SR.

LANDSCAPE DEMOLITION
 PLAN
 REST AREA RENOVATION

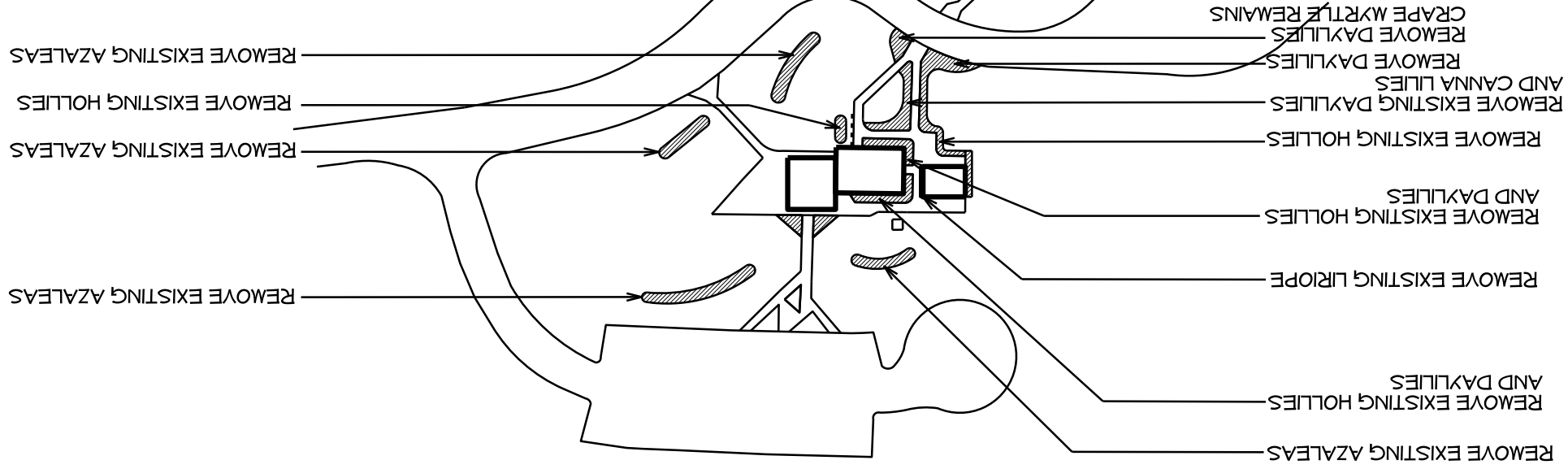
PREL DESIGN DATE: AUG / 2012
 CHECKED BY & DATE: N.RING
 FINAL DESIGN DATE: SEPT 2012



SHEET NO.: L-4
 TOTAL SHEET NO.: 7



NOTE: NO TREES ARE TO BE REMOVED
 UNLESS PERMISSION GIVEN TO
 CONTRACTOR BY DIVISION ROADSIDE
 ENGINEER. DIVISION ROADSIDE ENGINEER
 NEEDS TO APPROVE ALL PLANT REMOVAL
 BEFORE DEMOLITION IS TO BEGIN.





NCDOT - ROADSIDE ENVIRONMENTAL UNIT
 LANDSCAPE DESIGN & DEVELOPMENT
 1557 MAIL SERVICE CENTER, RALEIGH, NC 27699-1557
 PH: 919-707-2920 FAX: 919-715-2554
[HTTP://WWW.NCDOT.ORG/DOH/OPERATIONS/DP_CHEF_ENG/ROADSIDE/](http://www.ncdot.org/DOH/OPERATIONS/DP_CHEF_ENG/ROADSIDE/)

US 17 BRUNSWICK COUNTY
 WELCOME CENTER
 PROJECT #: 36059.30



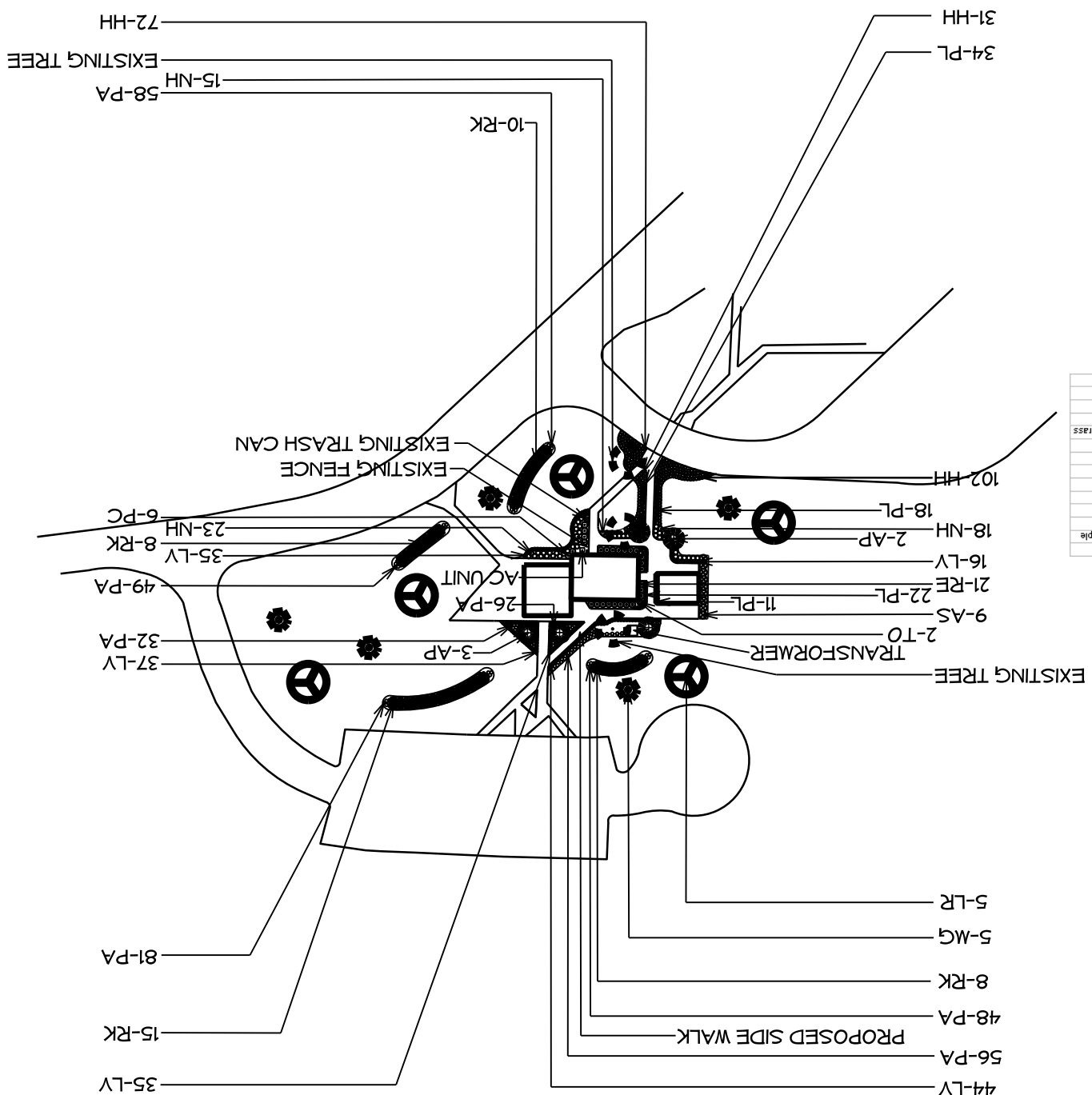
SHEET DESCRIPTION:
 LANDSCAPE SITE PLAN
 REST AREA RENOVATION

PREL DESIGN DATE:
 AUG / 2012
 CHECKED BY & DATE:
 N. RING
 FINAL DESIGN DATE:
 SEPT 2012



SHEET NO.:
L-5
 TOTAL SHEET NO.:
 7

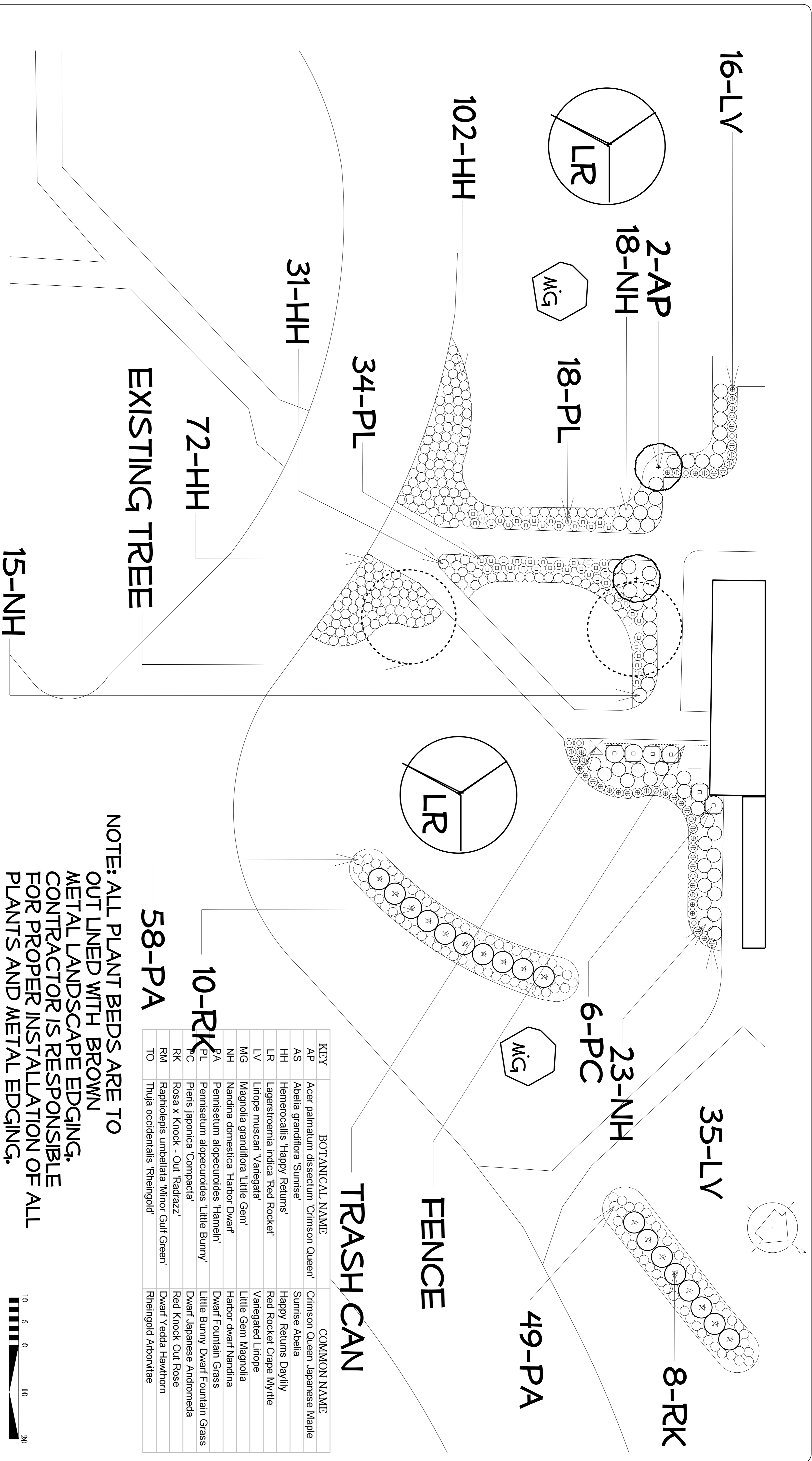
UNIT KEY	BOTANICAL NAME	COMMON NAME
EA	<i>Acer palmatum</i> des. edum. 'Crimson Queen'	Crimson Queen Japanese Maple
EA	<i>Abelia grandiflora</i> 'Sunrise	Sunrise Abelia
EA	<i>Hemerocallis 'Happy Returns'</i>	Happy Returns Daylily
EA	<i>Laestromia indica</i> 'Red Rocket'	Red Rocket Cape Hyacinth
EA	<i>Liriodendron 'Viregata'</i>	Viregated Liriodendron
EA	<i>Magnolia grandiflora</i> 'Little Gem'	Little Gem Magnolia
EA	<i>Nandina domestica</i> 'Harbor Dwarf'	Harbor Dwarf Nandina
EA	<i>Pennisetum alopecuroides</i> 'Little Bunny'	Little Bunny Dwarf Fountain Grass
EA	<i>Pennisetum alopecuroides</i> 'Little Bunny'	Little Bunny Dwarf Fountain Grass
EA	<i>Rosa x Knock-Out</i> 'Redazzz'	Red Knock Out Rose
EA	<i>Rosa x Knock-Out</i> 'Redazzz'	Red Knock Out Rose
EA	<i>Raphiophysa umbellata</i> 'Minor Gull Greer'	Minor Gull Greer
EA	<i>Thuja occidentalis</i> 'Rheingold'	Rheingold Arborvitae



NOTE: ALL PLANT BEDS ARE TO
 BE LINED WITH BROWN
 METAL LANDSCAPE EDGING.
 CONTRACTOR IS RESPONSIBLE
 FOR PROPER INSTALLATION OF ALL
 PLANTS AND METAL EDGING.



\$\$\$\$\$SYTIME\$\$\$\$\$
 \$\$\$\$\$\$DN\$\$\$\$\$
 \$\$\$\$\$\$USER\$\$\$\$\$



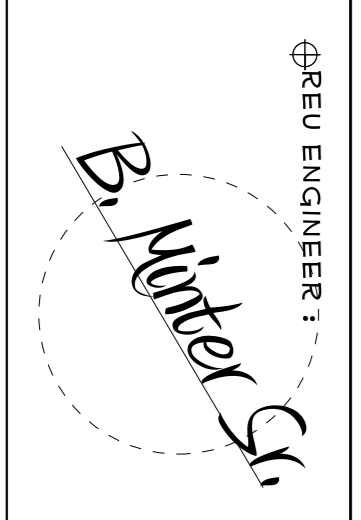
KEY	BOTANICAL NAME:	COMMON NAME:
AP	Acer palmatum dissectum 'Crimson Queen'	Crimson Queen Japanese Maple
AS	Abelia grandiflora 'Sunrise'	Sunrise Abelia
HH	Hemerocallis 'Happy Returns'	Happy Returns Daylily
LR	Lagerstroemia indica 'Red Rocket'	Red Rocket Grape Myrtle
LV	Liriope muscari 'Variegata'	Variegated Liriope
MG	Magnolia grandiflora 'Little Gem'	Little Gem Magnolia
NH	Nandina domestica 'Harbor Dwarf'	Harbor dwarf Nandina
PA	Pennisetum alopecuroides 'Hamel'	Dwarf Fountain Grass
PL	Pennisetum alopecuroides 'Little Bunny'	Little Bunny Dwarf Fountain Grass
PC	Pieris japonica 'Compacta'	Dwarf Japanese Andromeda
RK	Rosa x Knock - Out 'Radrazzi'	Red Knock Out Rose
RM	Raphiolepis umbellata 'Minor Gulf Green'	Dwarf Yedda Hawthorn
TO	Thuja occidentalis 'Rheingold'	Rheingold Arborvitae

**NOTE: ALL PLANT BEDS ARE TO
 OUT LINED WITH BROWN
 METAL LANDSCAPE EDGING.
 CONTRACTOR IS RESPONSIBLE
 FOR PROPER INSTALLATION OF ALL
 PLANTS AND METAL EDGING.**



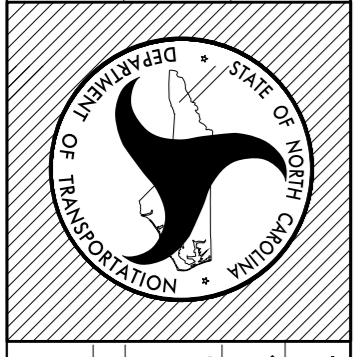
NCDOT - ROADSIDE ENVIRONMENTAL UNIT
 LANDSCAPE DESIGN & DEVELOPMENT
 1557 MAIL SERVICE CENTER RALEIGH NC 27699-1557
 PH: 919-707-2935 FAX: 919-715-2554
 HTTP://WWW.NCDOT.ORG/DOH/OPERATIONS/DP-CHIEF-ENG/ROADSIDE/

US 17 BRUNSWICK COUNTY
 WELCOME CENTER
 CONTRACT #: 36059.30



SHEET DESCRIPTION:
 PREL. DESIGN DATE: AUG / 2012
 CHECKED BY & DATE: N. RING
 FINAL DESIGN DATE: SEPT 2012

US 17 BRUNSWICK CO.
 LANDSCAPE PLAN SHEET



T.I.P. #
 WBS # 36059.30
 FED. I.D. #
 SHEET NO.: L-6 TOTAL SHEET NO.: 7



NC DOT - ROADSIDE ENVIRONMENTAL UNIT
 LANDSCAPE DESIGN & DEVELOPMENT
 1557 MAIL SERVICE CENTER RALEIGH NC 27699-1557
 PH: 919-707-2935 FAX: 919-715-2554
 HTTP://WWW.NCDOT.ORG/DOH/OPERATIONS/DP.CHIEF.ENG/ROADSIDE/

US 17 BRUNSWICK COUNTY
 WELCOME CENTER
 CONTRACT #: 36059.30

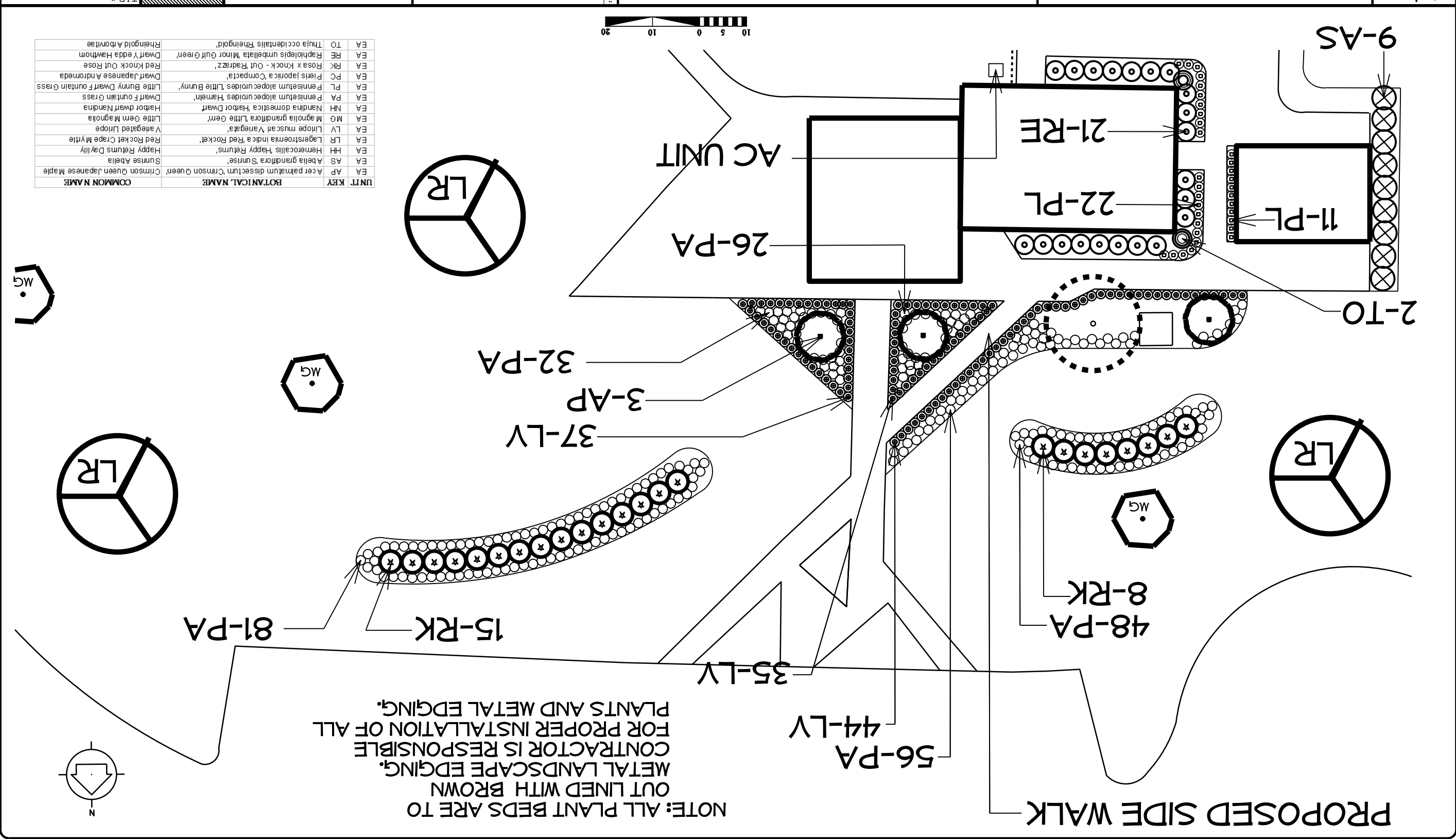
B. WINTER Sr.
 FREU ENGINEER

PREL. DESIGN DATE: AUG / 2012
 CHECKED BY & DATE: N. RING
 FINAL DESIGN DATE: SEPT 2012

US 17 BRUNSWICK CO.
 LANDSCAPE PLAN SHEET



T.P. #
 WPS # 36059.30
 FED ID. #
 SHEET NO.: L-7
 TOTAL SHEET NO.: 7



UNIT	KEY	BOTANICAL NAME	COMMON NAME
EA	AP	Acer palmatum dissectum 'Crimson Queen'	Crimson Queen Japanese Maple
EA	AS	Abelia grandiflora 'Sunrise'	Sunrise Abelia
EA	HH	Hemerocallis 'Happy Returns'	Happy Returns Daylily
EA	LR	Lagerstroemia indica 'Red Rocket'	Red Rocket Crape Myrtle
EA	LV	Liriodendron tulipifera 'Vanguard'	Vanguard Liriodendron
EA	MG	Magnolia grandiflora 'Little Gem'	Little Gem Magnolia
EA	NH	Nandina domestica 'Harbor Dwarf'	Harbor Dwarf Nandina
EA	PA	Pennisetum alopecuroides 'Hameln'	Dwarf Fountain Grass
EA	PL	Pennisetum alopecuroides 'Little Bunny'	Little Bunny Dwarf Fountain Grass
EA	PC	Pieris japonica 'Compacta'	Dwarf Japanese Andromeda
EA	RK	Rosa 'Knock Out'	Knock Out Rose
EA	RE	Raphiolepis umbellata 'Minor Gilt Green'	Dwarf Yedda Hawthorn
EA	TO	Thuja occidentalis 'Rheingold'	Rheingold Arborvitae

