

TIP PROJECT: 4RE.106413

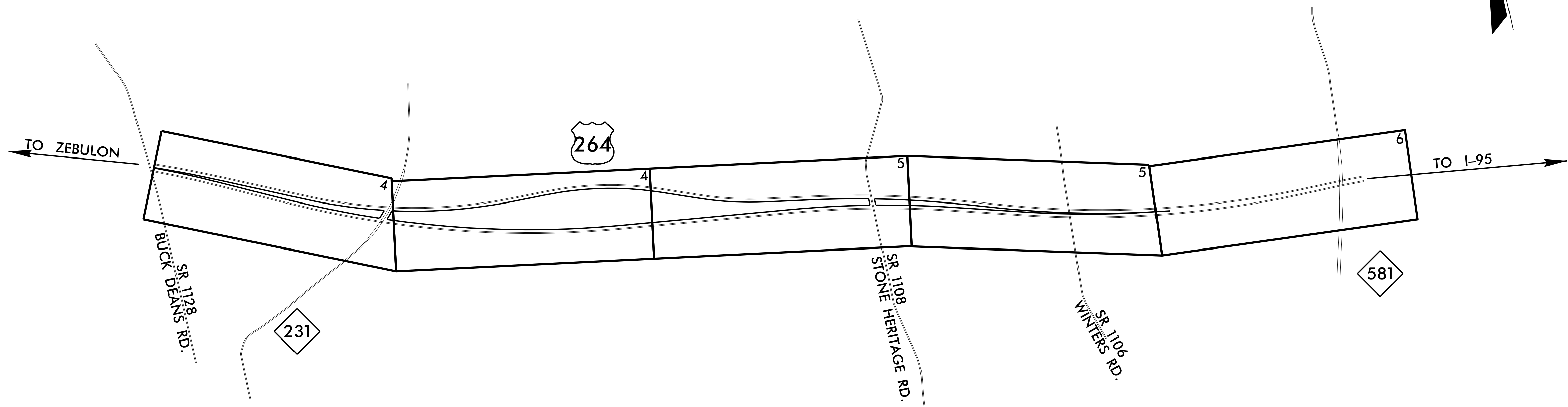
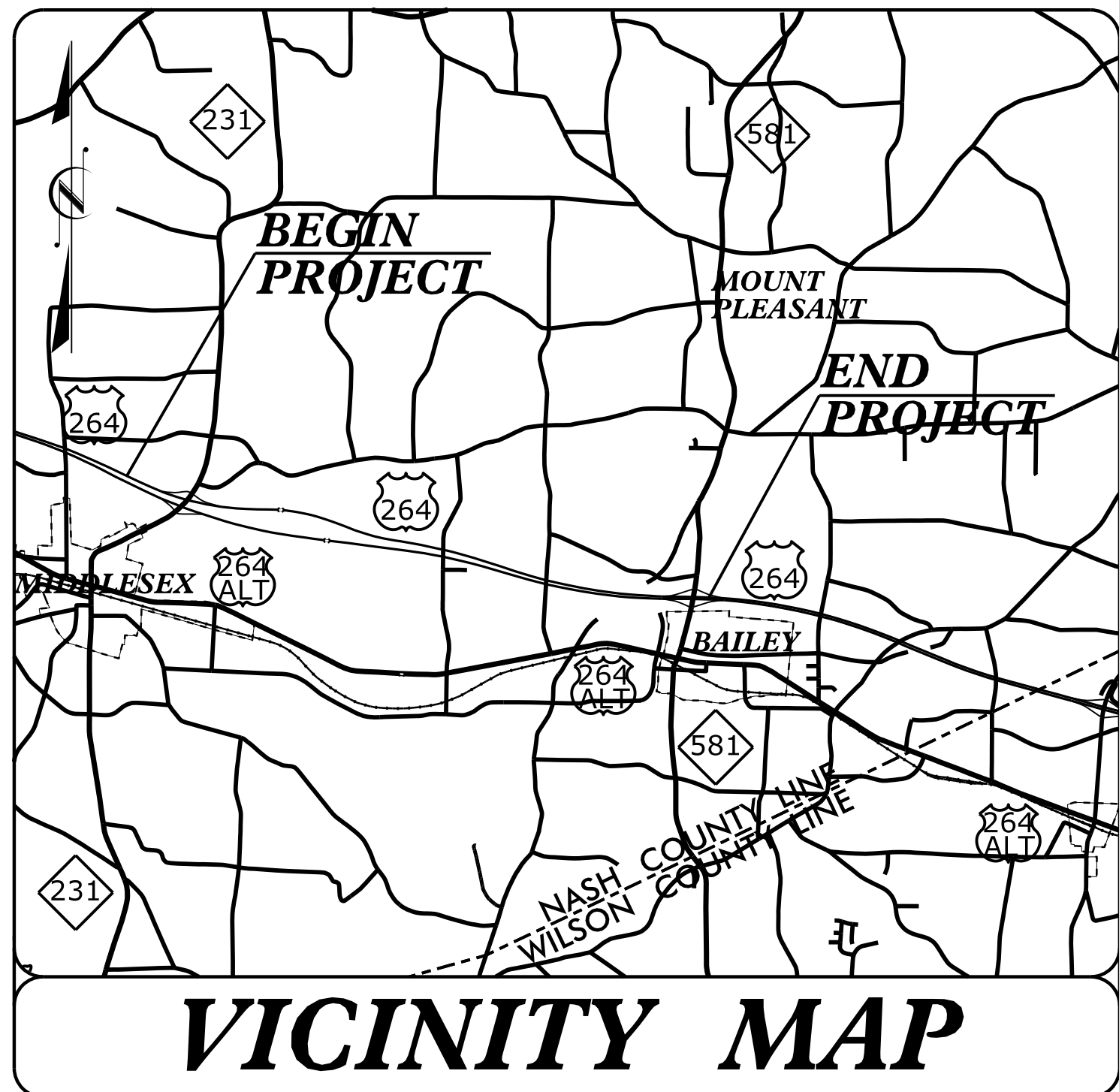
CONTRACT: D4POC0008

STATE OF NORTH CAROLINA
 DIVISION OF HIGHWAYS

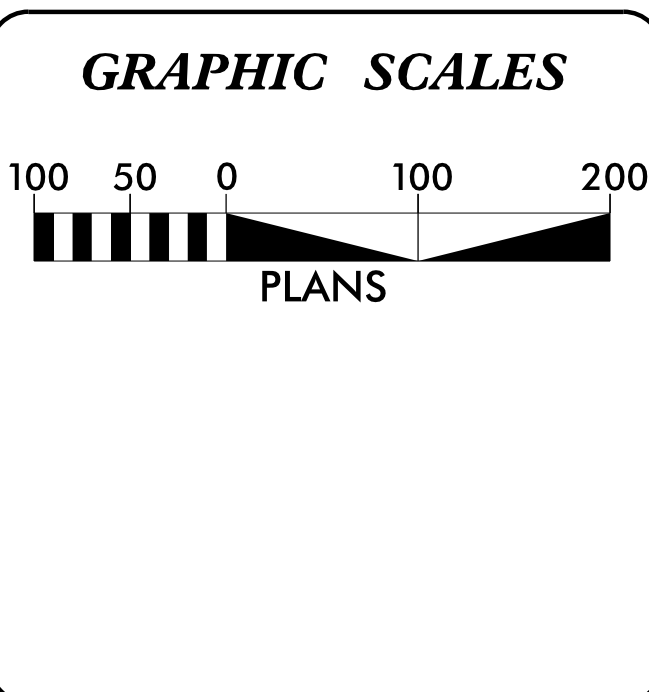
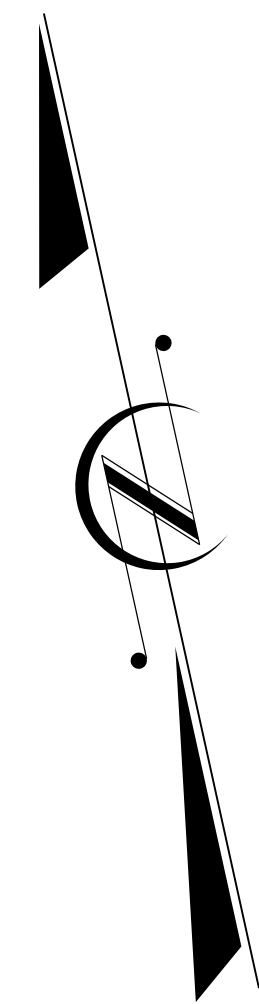
NASH COUNTY

**LOCATION: US 264 FROM SR 1128 (BUCK DEANS RD.)
 TO NC 581**

TYPE OF WORK: MEDIAN CLEARING



STATE	STATE PROJECT REFERENCE NO.	SHEET NO.	TOTAL SHEETS
N.C.	4RE.106413	1	
STATE PROJ. NO.	F.A. PROJ. NO.	DESCRIPTION	
4RE.106413		CONST.	



DESIGN DATA

PROJECT LENGTH

TOTAL LENGTH ROADWAY TIP PROJECT 4RE.106413 = 5.37 MI.

Prepared In the Office of:
DIVISION OF HIGHWAYS
 1000 Birch Ridge Dr., Raleigh NC, 27610

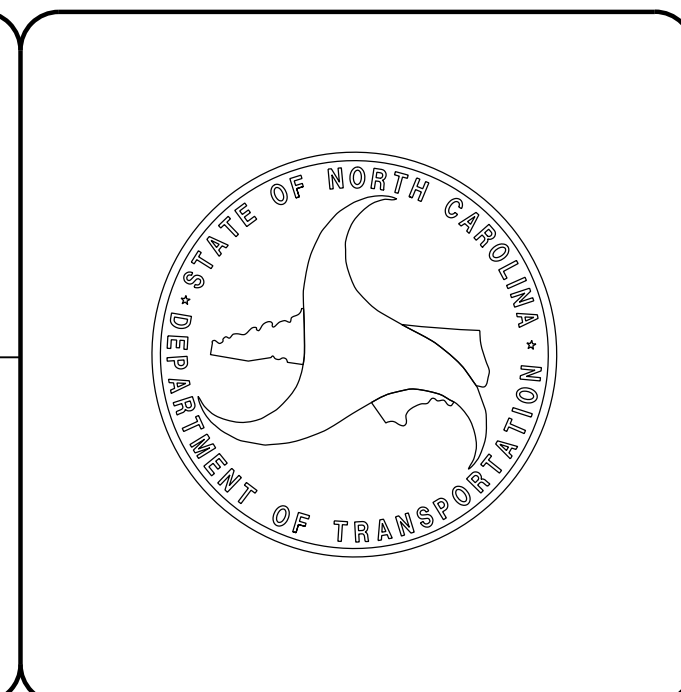
2018 STANDARD SPECIFICATIONS

RIGHT OF WAY DATE:
 N/A

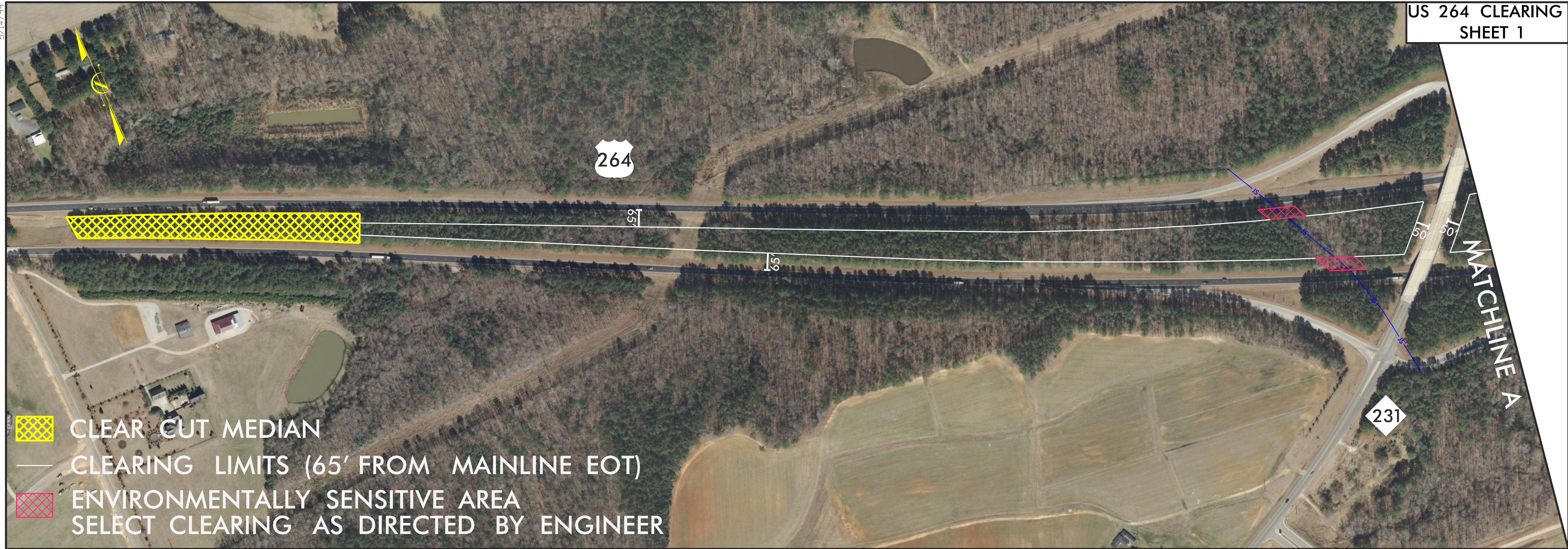
LETTING DATE:
 MARCH 13, 2018

N.A. GAINEY P.E.
 PROJECT ENGINEER

R.L. KEETER P.E.
 PROJECT DESIGN ENGINEER

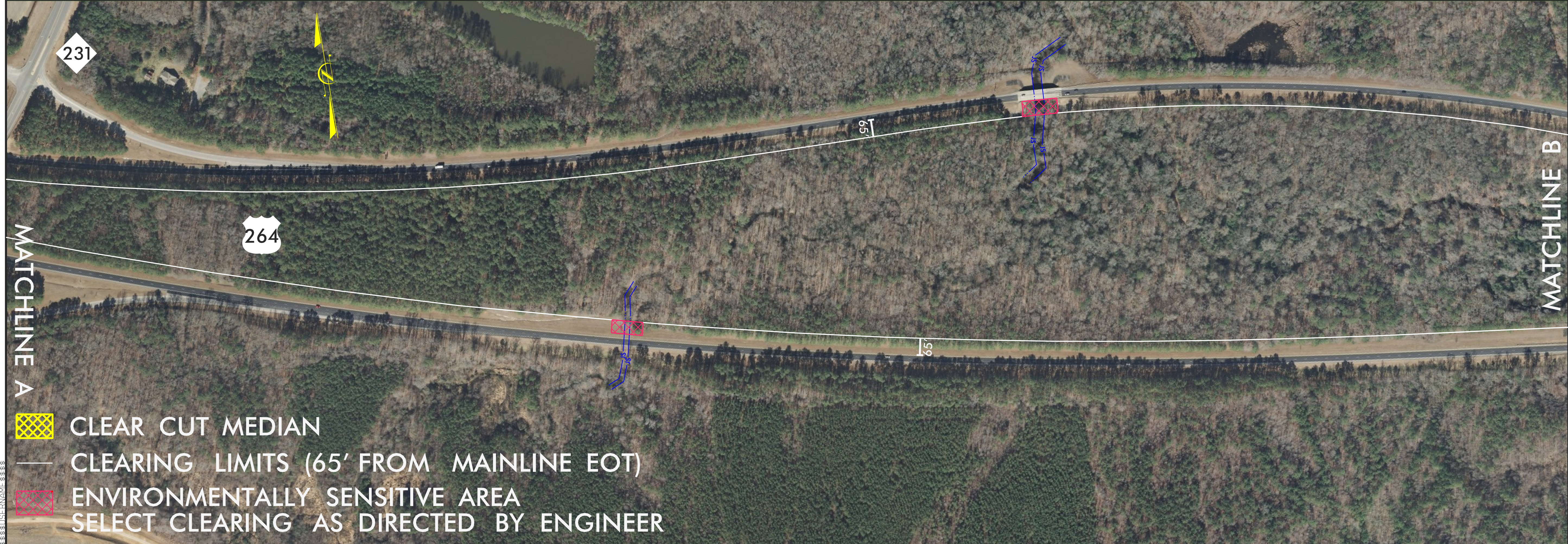





5/14/99



-  CLEAR CUT MEDIAN
-  CLEARING LIMITS (65' FROM MAINLINE EOT)
-  ENVIRONMENTALLY SENSITIVE AREA
SELECT CLEARING AS DIRECTED BY ENGINEER

5/14/99



-  CLEAR CUT MEDIAN
-  CLEARING LIMITS (65' FROM MAINLINE EOT)
-  ENVIRONMENTALLY SENSITIVE AREA
SELECT CLEARING AS DIRECTED BY ENGINEER

5/14/99

MATCHLINE B

-  CLEAR CUT MEDIAN
-  CLEARING LIMITS (65' FROM MAINLINE EOT)
-  ENVIRONMENTALLY SENSITIVE AREA
SELECT CLEARING AS DIRECTED BY ENGINEER

264

65'

65'

50'

SR 1108

STONE
HERITAGE RD.



MATCHLINE C

MATCHLINE C

-  CLEAR CUT MEDIAN
-  CLEARING LIMITS (65' FROM MAINLINE EOT)
-  ENVIRONMENTALLY SENSITIVE AREA
SELECT CLEARING AS DIRECTED BY ENGINEER

264

65'

65'

SR 1106
WINTERS RD.



MATCHLINE D

5/14/99



264

581

MATCHLINE D



CLEAR CUT MEDIAN



CLEARING LIMITS (65' FROM MAINLINE EOT)



ENVIRONMENTALLY SENSITIVE AREA
SELECT CLEARING AS DIRECTED BY ENGINEER

5/14/99