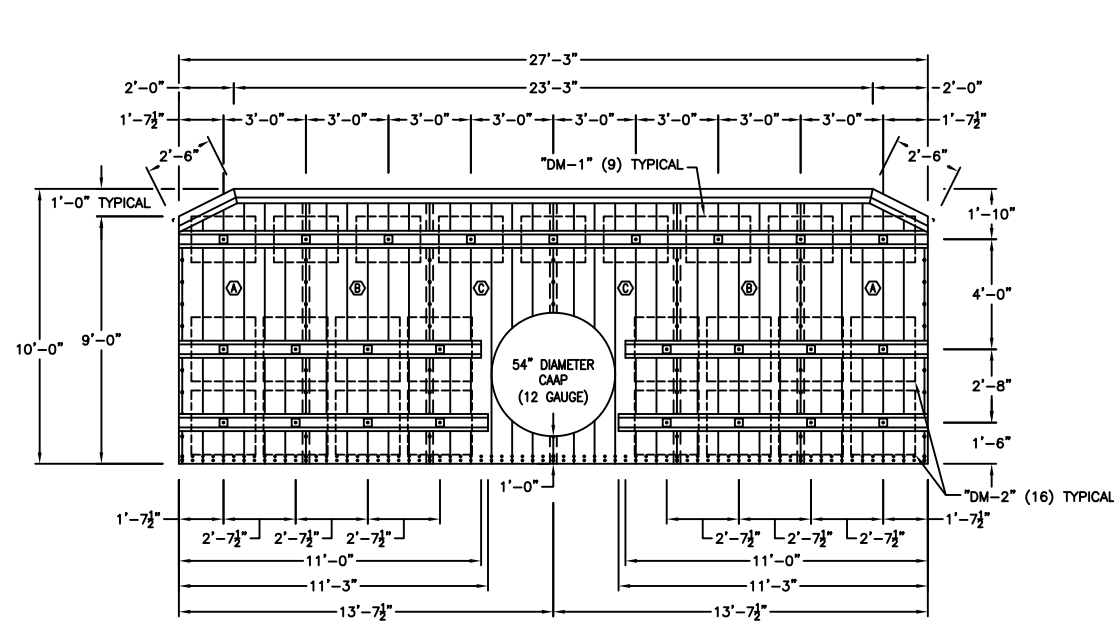
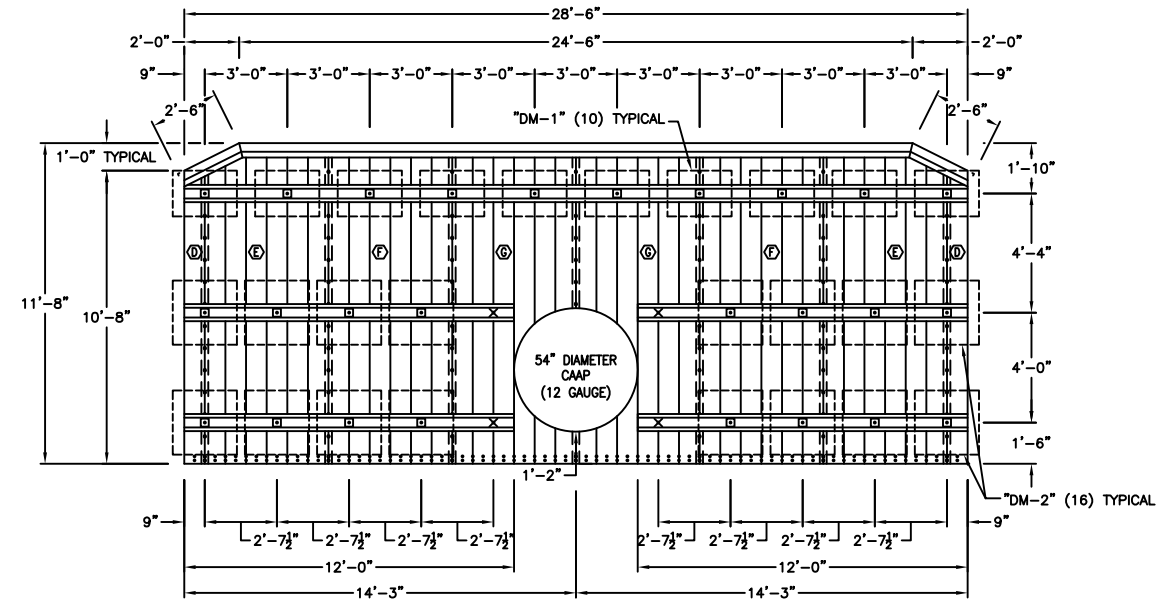


TYPE VI STIFFENING RIB BOLTED TO THE TOP AND BOTTOM ON SOIL SIDE OF EACH HEADWALL

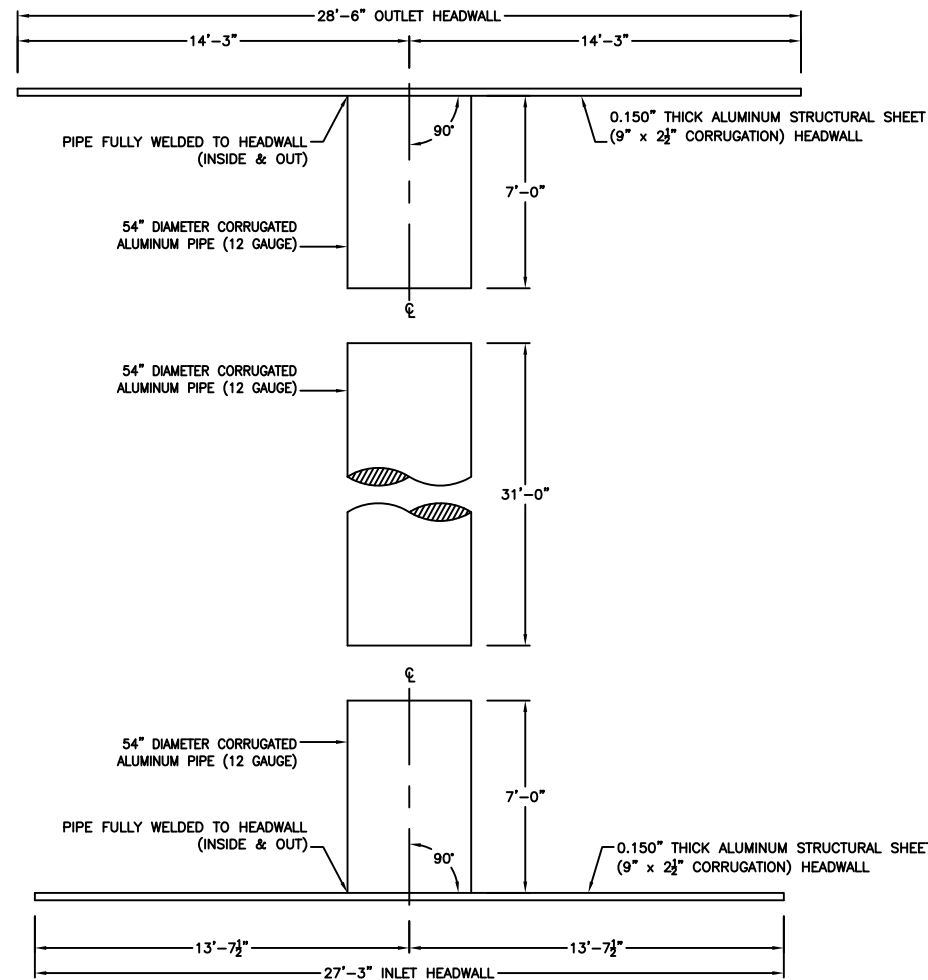


ELEVATION VIEW  
-INLET-

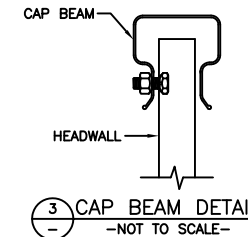
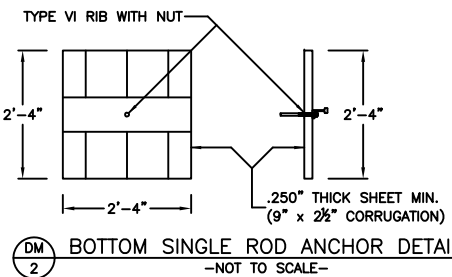
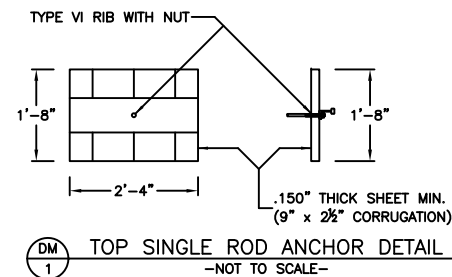


ELEVATION VIEW  
-OUTLET-

"X" DENOTES ROD ATTACHMENT TO PIPE



PLAN VIEW  
-INLET & OUTLET-



- NOTES:
- 1.) The Depth of Bury is Defined as the Amount of Soil Cover Above the Top of the Highest Point of the Deadman.
  - 2.) The Minimum Burial Depth for the Top Deadman Anchor is 2'-0" (Inlet & Outlet) From Top of Road.
  - 3.) The Minimum Burial Depth for the Middle Deadman Anchor is 4'-8" (Inlet & Outlet) From Top of Road.
  - 4.) The Minimum Burial Depth for the Bottom Deadman Anchor is 8'-0" (Inlet & Outlet) From Top of Road.
  - 5.) All Deadman Anchor Rods are to be 16'-6" Long (Inlet) & 19'-0" (Outlet). Use Deadman Anchors or Full Length Rod.
  - 6.) All Backfill Material in the Structural Zone is to be #57 Stone.

ASSEMBLY REQUIREMENTS-HEADWALLS							
HEAT NO.	RADIUS	MK	SHIP			T	REMARKS
			PIECES	"N"	LENGTH		
X	FLAT	(A)	2	12	10.00'	.150"	BEVEL CUT ON TOP
X	FLAT	(B)	2	12	10.00'	.150"	FULL PLATE
X	FLAT	(C)	2	12	10.00'	.150"	PIPE WELDED TO PLATE
X	FLAT	(D)	2	15	11.67'	.150"	PARTIAL PLATE W/BEVEL CUT
X	FLAT	(E)	2	15	11.67'	.150"	BEVEL CUT ON TOP
X	FLAT	(F)	2	15	11.67'	.150"	FULL PLATE
X	FLAT	(G)	2	15	11.67'	.150"	PIPE WELDED TO PLATE
		DM1	19	2	1.67'	.150"	DEADMAN WITH TYPE VI
		DM2	32	3	2.33'	.250"	DEADMAN WITH TYPE VI
			1		24.50'		ALUMINUM CAP BEAMS
			1		23.25'		ALUMINUM CAP BEAMS
			4		2.50'		ALUMINUM CAP BEAMS
			1		28.50'		ALUMINUM WALE BEAMS
			1		27.25'		ALUMINUM WALE BEAMS
			4		12.00'		ALUMINUM WALE BEAMS
			2		11.25'		ALUMINUM WALE BEAMS
			2		11.00'		ALUMINUM WALE BEAMS
			55				WALE NUTS
			51	3/4" DIA.			STRAIGHT RODS FOR DEADMAN ANCHORS
			4	3/4" DIA.			BENT RODS USED AT ARCH TO HEADWALL

SHIPMENT SUMMARY:			
SPECIFICATIONS:	AASHTO M219	GAGE:	
APPROXIMATE SHIPPING WEIGHT:		TOP:	
CUSTOMER:		SIDES:	
		CORNER:	
		BOTTOM:	

PROJECT: 1989 SILENT NIGHT HILL ROAD (SR 1205)  
EDGEcombe COUNTY, NC  
HEADWALLS (0.150" THICKNESS)  
54" PIPE, 3" x 1" CORRUGATION, 12 GAUGE

DRAWN BY: JCH	REVISIONS:		
CHECKED BY:	NO.	DATE	BY
APPROVED BY:	1	4/9/17	JCH
DATE: 3/16/2017	2		
SCALE: NTS	LANE METAL PRODUCTS DIVISION		BID #:
	of LANE ENTERPRISES, INC.		---
	CAMP HILL, PA		LANE PROJECT NUMBER: