



NC DEPARTMENT OF TRANSPORTATION
 DIVISION OF HIGHWAYS
 STRUCTURE MANAGEMENT UNIT

ATTENTION: **P.M. issued for split beam 19, span 1. Sinkhole at N.E. bridge rail.**

Structure Safety Report

2 Year Complete Topside and Underwater Element Inspection

COUNTY: WILSON STRUCTURE NUMBER: 970143 FREQUENCY: 24 MONTHS

FACILITY CARRIED: SR1506 MILE POST: _____

LOCATION: 0.2 MI. E. JCT. SR1510

FEATURE INTERSECTED: WHITEOAK SWAMP

LATITUDE: 35° 43' 17.84" LONGITUDE: 77° 44' 59.7"

SUPERSTRUCTURE: REINFORCED CONCRETE FLOOR ON TIMBER JOISTS

SUBSTRUCTURE: END & INT. BTS:TIMBER CAP & PILES, END BT#2 WITH STEEL CAP & PILE CRUTCH

SPANS: 2@18'0"

FRACTURE CRITICAL TEMPORARY SHORING SCOUR CRITICAL SCOUR PLAN OF ACTION

PRESENT CONDITION: Fair INSPECTION DATE: 05/03/2017

POSTED SV: 18 POSTED TTST: 26

OTHER SIGNS PRESENT: DELINEATORS



Sign noticed issued for	Number Required
<u>NO</u> WEIGHT LIMIT	<u>0</u>
<u>NO</u> DELINEATORS	<u>0</u>
<u>NO</u> NARROW BRIDGE	<u>0</u>
<u>NO</u> ONE LANE BRIDGE	<u>0</u>
<u>NO</u> LOW CLEARANCE	<u>0</u>

DIRECTION OF INSPECTION: W-E

DIRECTION MATCHES PLANS: YES

LOOKING EAST

INSPECTED BY Brad Cleaver	SIGNATURE 	ASSISTED BY jcb,jm
------------------------------	---------------	-----------------------

Structure Element Scoring

Structure Number: 970143

Inspection Date 5/3/2017

Element Number	Parent Number	Element Name	Location	Total Quantity	Level 1 Quantity	Level 2 Quantity	Level 3 Quantity	Level 4 Quantity
12	0	Reinforced Concrete Deck	Deck	916	916	0	0	0
111	0	Timber Open Girder/Beam	Beam	684	0	681	2	1
216	0	Timber Abutment	Abutments	26	0	26	0	0
225	0	Steel Pile	Piles and Columns	4	0	4	0	0
515	225	Steel Protective Coating	Piles and Columns	64	0	64	0	0
228	0	Timber Pile	Piles and Columns	12	0	12	0	0
231	0	Steel Pier Cap	Caps	26	0	26	0	0
515	231	Steel Protective Coating	Caps	26	0	26	0	0
235	0	Timber Pier Cap	Caps	78	0	76	0	2
331	0	Reinforced Concrete Bridge Railing	Bridge Rail	72	0	72	0	0
510	0	Wearing Surface	Wearing Surfaces	936	912	24	0	0

Summary of Maintenance Needs

Maintenance By Defect

Structure Number: 970143

Inspection Date: 05/03/2017

MMS Code	Element Name	Defect Name	Recommended Quantity
3304	Timber Open Girder/Beam	Check/Shake	672 Feet
3304	Timber Open Girder/Beam	Split/Delamination (Timber)	2 Feet
3304	Timber Open Girder/Beam	Damage	9 Feet
3304	Timber Open Girder/Beam	Decay/Section Loss	1 Feet
3346	Timber Abutment	Decay/Section Loss	3 Feet
3346	Timber Abutment	Check/Shake	46 Feet
3346	Timber Abutment	Scour	3 Feet
3344	Timber Pile	Decay/Section Loss	1 Each
3344	Timber Pile	Check/Shake	11 Each
3344	Timber Pier Cap	Check/Shake	76 Feet
3344	Timber Pier Cap	Decay/Section Loss	2 Feet
2816	Wearing Surface	Crack (Wearing Surface)	24 Square Feet
3342	Steel Protective Coating	Effectiveness (Steel Protective Coatings)	90 Square Feet

Element Structure Maintenance Quantities

Structure Number: 970143

Inspection Date 05/03/2017

Location	MMS Code	Description	Maint Quantity	Total Quantity	Severe Quantity	Poor Quantity	Fair Quantity	Good Quantity
Abutments	3346	Maintenance of Timber Bulkheads or Wingwalls	26	26	0	0	26	0
Beam	3304	Maintenance of Timber of Superstructure Components	684	684	1	2	681	0
Bridge Rail	3318	Maintenance of Concrete Bridge Rail	0	72	0	0	72	0
Caps	3342	Clean and Paint Steel	26	26	0	0	26	0
Caps	3344	Maintenance To Timber Substrcutre	78	78	2	0	76	0
Caps	3354	Maintenance of Steel Substructure Components	0	26	0	0	26	0
Deck	3326	Maintenance of Concrete Deck	0	916	0	0	0	916
Piles and Columns	3342	Clean and Paint Steel	64	64	0	0	64	0
Piles and Columns	3344	Maintenance To Timber Substrcutre	12	12	0	0	12	0
Piles and Columns	3354	Maintenance of Steel Substructure Components	0	4	0	0	4	0
Wearing Surfaces	2816	Asphalt Surface Repair	24	936	0	0	24	912

Element Condition and Maintenance Data

Structure Number: 970143

Inspection Date: 05/03/2017

Span 1	Beam 1
Timber Joist	

Element Number	Element Name	Total Qty	CS1 Qty	CS2 Qty	CS3 Qty	CS4 Qty
111	Timber Open Girder/Beam	18	0	18	0	0 Feet

Element Number	Defect Type	Defect Description	CS	CS Qty	Maint Qty
111	Check/Shake	Checks to 1/8"	2	18	18 Feet

General Comments

Span 1	Beam 2
Timber Joist	

Element Number	Element Name	Total Qty	CS1 Qty	CS2 Qty	CS3 Qty	CS4 Qty
111	Timber Open Girder/Beam	18	0	18	0	0 Feet

Element Number	Defect Type	Defect Description	CS	CS Qty	Maint Qty
111	Check/Shake	Checks to 1/8"	2	18	18 Feet

General Comments

Span 1	Beam 3
Timber Joist	

Element Number	Element Name	Total Qty	CS1 Qty	CS2 Qty	CS3 Qty	CS4 Qty
111	Timber Open Girder/Beam	18	0	18	0	0 Feet

Element Number	Defect Type	Defect Description	CS	CS Qty	Maint Qty
111	Check/Shake	Checks to 1/8"	2	18	18 Feet

General Comments

Span 1	Beam 4
Timber Joist	

Element Number	Element Name	Total Qty	CS1 Qty	CS2 Qty	CS3 Qty	CS4 Qty
111	Timber Open Girder/Beam	18	0	18	0	0 Feet

Element Number	Defect Type	Defect Description	CS	CS Qty	Maint Qty
111	Check/Shake	Checks to 1/8"	2	18	18 Feet

General Comments

Span 1	Beam 5
Timber Joist	

Element Number	Element Name	Total Qty	CS1 Qty	CS2 Qty	CS3 Qty	CS4 Qty
111	Timber Open Girder/Beam	18	0	18	0	0 Feet

Element Number	Defect Type	Defect Description	CS	CS Qty	Maint Qty

111	Check/Shake	Checks to 1/8"	2	18	18	Feet
-----	-------------	----------------	---	----	----	------

General Comments

Span 1 Beam 6

Timber Joist

Element Number	Element Name	Total Qty	CS1 Qty	CS2 Qty	CS3 Qty	CS4 Qty
111	Timber Open Girder/Beam	18	0	18	0	0 Feet

Element Number	Defect Type	Defect Description	CS	CS Qty	Maint Qty
111	Check/Shake	Checks to 1/8"	2	18	18 Feet

General Comments

Span 1 Beam 7

Timber Joist

Element Number	Element Name	Total Qty	CS1 Qty	CS2 Qty	CS3 Qty	CS4 Qty
111	Timber Open Girder/Beam	18	0	18	0	0 Feet

Element Number	Defect Type	Defect Description	CS	CS Qty	Maint Qty
111	Check/Shake	Checks to 1/8"	2	18	18 Feet

General Comments

Span 1 Beam 8

Timber Joist

Element Number	Element Name	Total Qty	CS1 Qty	CS2 Qty	CS3 Qty	CS4 Qty
111	Timber Open Girder/Beam	18	0	18	0	0 Feet

Element Number	Defect Type	Defect Description	CS	CS Qty	Maint Qty
111	Check/Shake	Checks to 1/8"	2	18	18 Feet

General Comments

Span 1 Beam 9

Timber Joist

Element Number	Element Name	Total Qty	CS1 Qty	CS2 Qty	CS3 Qty	CS4 Qty
111	Timber Open Girder/Beam	18	0	18	0	0 Feet

Element Number	Defect Type	Defect Description	CS	CS Qty	Maint Qty
111	Check/Shake	Checks to 1/8"	2	18	18 Feet

General Comments

Span 1 **Beam 10**
Timber Joist

Element Number	Element Name	Total Qty	CS1 Qty	CS2 Qty	CS3 Qty	CS4 Qty
111	Timber Open Girder/Beam	18	0	18	0	0 Feet

Element Number	Defect Type	Defect Description	CS	CS Qty	Maint Qty
111	Check/Shake	Checks to 1/8"	2	18	18 Feet

General Comments

Span 1 **Beam 11**
Timber Joist

Element Number	Element Name	Total Qty	CS1 Qty	CS2 Qty	CS3 Qty	CS4 Qty
111	Timber Open Girder/Beam	18	0	18	0	0 Feet

Element Number	Defect Type	Defect Description	CS	CS Qty	Maint Qty
111	Check/Shake	Checks to 1/8"	2	18	18 Feet

General Comments

Span 1 **Beam 12**
Timber Joist

Element Number	Element Name	Total Qty	CS1 Qty	CS2 Qty	CS3 Qty	CS4 Qty
111	Timber Open Girder/Beam	18	0	18	0	0 Feet

Element Number	Defect Type	Defect Description	CS	CS Qty	Maint Qty
111	Check/Shake	Checks to 1/8"	2	18	18 Feet

General Comments

Span 1 **Beam 13**
Timber Joist

Element Number	Element Name	Total Qty	CS1 Qty	CS2 Qty	CS3 Qty	CS4 Qty
111	Timber Open Girder/Beam	18	0	18	0	0 Feet

Element Number	Defect Type	Defect Description	CS	CS Qty	Maint Qty
111	Check/Shake	Checks to 1/8"	2	18	18 Feet

General Comments

Span 1 **Beam 14**
Timber Joist

Element Number	Element Name	Total Qty	CS1 Qty	CS2 Qty	CS3 Qty	CS4 Qty
111	Timber Open Girder/Beam	18	0	18	0	0 Feet

Element Number	Defect Type	Defect Description	CS	CS Qty	Maint Qty
111	Check/Shake	Checks to 1/8"	2	18	18 Feet

General Comments

Span 1 Beam 15

Timber Joist

Element Number	Element Name	Total Qty	CS1 Qty	CS2 Qty	CS3 Qty	CS4 Qty
111	Timber Open Girder/Beam	18	0	18	0	0 Feet

Element Number	Defect Type	Defect Description	CS	CS Qty	Maint Qty
111	Check/Shake	Checks to 1/8"	2	18	18 Feet

General Comments

Span 1 Beam 16

Timber Joist

Element Number	Element Name	Total Qty	CS1 Qty	CS2 Qty	CS3 Qty	CS4 Qty
111	Timber Open Girder/Beam	18	0	18	0	0 Feet

Element Number	Defect Type	Defect Description	CS	CS Qty	Maint Qty
111	Check/Shake	Checks to 1/8"	2	18	18 Feet

General Comments

Span 1 Beam 17

Timber Joist

Element Number	Element Name	Total Qty	CS1 Qty	CS2 Qty	CS3 Qty	CS4 Qty
111	Timber Open Girder/Beam	18	0	18	0	0 Feet

Element Number	Defect Type	Defect Description	CS	CS Qty	Maint Qty
111	Check/Shake	Checks to 1/8"	2	18	18 Feet

General Comments

Span 1 Beam 18

Timber Joist

Element Number	Element Name	Total Qty	CS1 Qty	CS2 Qty	CS3 Qty	CS4 Qty
111	Timber Open Girder/Beam	18	0	18	0	0 Feet

Element Number	Defect Type	Defect Description	CS	CS Qty	Maint Qty
111	Check/Shake	Checks to 1/8"	2	18	18 Feet

General Comments

Span 1 Beam 19

Timber Joist

Element Number	Element Name	Total Qty	CS1 Qty	CS2 Qty	CS3 Qty	CS4 Qty
111	Timber Open Girder/Beam	18	0	16	2	0 Feet

Element Number	Defect Type	Defect Description	CS	CS Qty	Maint Qty
111	Split/Delamination (Timber)	1" wide split over bent 1 - 2' long	3	2	2 Feet
111	Check/Shake	Checks to 1/8"	2	7	7 Feet
111	Damage	Beam rotated inward 1.5" midspan to bent 1	2	9	9 Feet

General Comments

Span 1 Wearing Surface

Asphalt Wearing Surface

Element Number	Element Name	Total Qty	CS1 Qty	CS2 Qty	CS3 Qty	CS4 Qty
510	Wearing Surface	468	444	24	0	0 Square Feet

Element Number	Defect Type	Defect Description	CS	CS Qty	Maint Qty
510	Crack (Wearing Surface)	Hairline crack in aws over bent 1	2	24	24 Square Feet

General Comments

Span 1 Left Bridge Rail

Concrete Railing

Element Number	Element Name	Total Qty	CS1 Qty	CS2 Qty	CS3 Qty	CS4 Qty
331	Reinforced Concrete Bridge Railing	18	0	18	0	0 Feet

Element Number	Defect Type	Defect Description	CS	CS Qty	Maint Qty
331	Cracking (RC and Other)	Random hairline cracking	2	18	Feet

General Comments

Span 1 Right Bridge Rail

Concrete Railing

Element Number	Element Name	Total Qty	CS1 Qty	CS2 Qty	CS3 Qty	CS4 Qty
331	Reinforced Concrete Bridge Railing	18	0	18	0	0 Feet

Element Number	Defect Type	Defect Description	CS	CS Qty	Maint Qty
331	Cracking (RC and Other)	random h/l cracking	2	18	Feet

General Comments

Span 2 **Beam 1**
Timber Joist

Element Number	Element Name	Total Qty	CS1 Qty	CS2 Qty	CS3 Qty	CS4 Qty
111	Timber Open Girder/Beam	18	0	17	0	1 Feet

Element Number	Defect Type	Defect Description	CS	CS Qty	Maint Qty
111	Decay/Section Loss	Decayed up to 5" deep x 1' long x 5" high at end bent 2 beyond crutch bent.	4	1	1 Feet
111	Check/Shake	Checks to 1/8"	2	17	17 Feet

General Comments

Span 2 **Beam 2**
Timber Joist

Element Number	Element Name	Total Qty	CS1 Qty	CS2 Qty	CS3 Qty	CS4 Qty
111	Timber Open Girder/Beam	18	0	18	0	0 Feet

Element Number	Defect Type	Defect Description	CS	CS Qty	Maint Qty
111	Check/Shake	Checks to 1/8"	2	18	18 Feet

General Comments

Span 2 **Beam 3**
Timber Joist

Element Number	Element Name	Total Qty	CS1 Qty	CS2 Qty	CS3 Qty	CS4 Qty
111	Timber Open Girder/Beam	18	0	18	0	0 Feet

Element Number	Defect Type	Defect Description	CS	CS Qty	Maint Qty
111	Check/Shake	Checks to 1/8"	2	18	18 Feet

General Comments

Span 2 **Beam 4**
Timber Joist

Element Number	Element Name	Total Qty	CS1 Qty	CS2 Qty	CS3 Qty	CS4 Qty
111	Timber Open Girder/Beam	18	0	18	0	0 Feet

Element Number	Defect Type	Defect Description	CS	CS Qty	Maint Qty
111	Check/Shake	Checks to 1/8"	2	18	18 Feet

General Comments

Span 2 **Beam 5**
Timber Joist

Element Number	Element Name	Total Qty	CS1 Qty	CS2 Qty	CS3 Qty	CS4 Qty
111	Timber Open Girder/Beam	18	0	18	0	0 Feet

Element Number	Defect Type	Defect Description	CS	CS Qty	Maint Qty
----------------	-------------	--------------------	----	--------	-----------

111 Check/Shake Checks to 1/8" 2 18 18 Feet

General Comments

Span 2 Beam 6

Timber Joist

Element Number	Element Name	Total Qty	CS1 Qty	CS2 Qty	CS3 Qty	CS4 Qty
111	Timber Open Girder/Beam	18	0	18	0	0 Feet

Element Number	Defect Type	Defect Description	CS	CS Qty	Maint Qty
111	Check/Shake	Checks to 1/8"	2	18	18 Feet

General Comments

Span 2 Beam 7

Timber Joist

Element Number	Element Name	Total Qty	CS1 Qty	CS2 Qty	CS3 Qty	CS4 Qty
111	Timber Open Girder/Beam	18	0	18	0	0 Feet

Element Number	Defect Type	Defect Description	CS	CS Qty	Maint Qty
111	Check/Shake	Checks to 1/8"	2	18	18 Feet

General Comments

Span 2 Beam 8

Timber Joist

Element Number	Element Name	Total Qty	CS1 Qty	CS2 Qty	CS3 Qty	CS4 Qty
111	Timber Open Girder/Beam	18	0	18	0	0 Feet

Element Number	Defect Type	Defect Description	CS	CS Qty	Maint Qty
111	Check/Shake	Checks to 1/8"	2	18	18 Feet

General Comments

Span 2 Beam 9

Timber Joist

Element Number	Element Name	Total Qty	CS1 Qty	CS2 Qty	CS3 Qty	CS4 Qty
111	Timber Open Girder/Beam	18	0	18	0	0 Feet

Element Number	Defect Type	Defect Description	CS	CS Qty	Maint Qty
111	Check/Shake	Checks to 1/8"	2	18	18 Feet

General Comments

Span 2 **Beam 10**
Timber Joist

Element Number	Element Name	Total Qty	CS1 Qty	CS2 Qty	CS3 Qty	CS4 Qty
111	Timber Open Girder/Beam	18	0	18	0	0 Feet

Element Number	Defect Type	Defect Description	CS	CS Qty	Maint Qty
111	Check/Shake	Checks to 1/8"	2	18	18 Feet

General Comments

Span 2 **Beam 11**
Timber Joist

Element Number	Element Name	Total Qty	CS1 Qty	CS2 Qty	CS3 Qty	CS4 Qty
111	Timber Open Girder/Beam	18	0	18	0	0 Feet

Element Number	Defect Type	Defect Description	CS	CS Qty	Maint Qty
111	Check/Shake	Checks to 1/8"	2	18	18 Feet

General Comments

Span 2 **Beam 12**
Timber Joist

Element Number	Element Name	Total Qty	CS1 Qty	CS2 Qty	CS3 Qty	CS4 Qty
111	Timber Open Girder/Beam	18	0	18	0	0 Feet

Element Number	Defect Type	Defect Description	CS	CS Qty	Maint Qty
111	Check/Shake	Checks to 1/8"	2	18	18 Feet

General Comments

Span 2 **Beam 13**
Timber Joist

Element Number	Element Name	Total Qty	CS1 Qty	CS2 Qty	CS3 Qty	CS4 Qty
111	Timber Open Girder/Beam	18	0	18	0	0 Feet

Element Number	Defect Type	Defect Description	CS	CS Qty	Maint Qty
111	Check/Shake	Checks to 1/8"	2	18	18 Feet

General Comments

Span 2 **Beam 14**
Timber Joist

Element Number	Element Name	Total Qty	CS1 Qty	CS2 Qty	CS3 Qty	CS4 Qty
111	Timber Open Girder/Beam	18	0	18	0	0 Feet

Element Number	Defect Type	Defect Description	CS	CS Qty	Maint Qty
111	Check/Shake	Checks to 1/8"	2	18	18 Feet

General Comments

Span 2 Beam 15

Timber Joist

Element Number	Element Name	Total Qty	CS1 Qty	CS2 Qty	CS3 Qty	CS4 Qty
111	Timber Open Girder/Beam	18	0	18	0	0 Feet

Element Number	Defect Type	Defect Description	CS	CS Qty	Maint Qty
111	Check/Shake	Checks to 1/8"	2	18	18 Feet

General Comments

Span 2 Beam 16

Timber Joist

Element Number	Element Name	Total Qty	CS1 Qty	CS2 Qty	CS3 Qty	CS4 Qty
111	Timber Open Girder/Beam	18	0	18	0	0 Feet

Element Number	Defect Type	Defect Description	CS	CS Qty	Maint Qty
111	Check/Shake	Checks to 1/8"	2	18	18 Feet

General Comments

Span 2 Beam 17

Timber Joist

Element Number	Element Name	Total Qty	CS1 Qty	CS2 Qty	CS3 Qty	CS4 Qty
111	Timber Open Girder/Beam	18	0	18	0	0 Feet

Element Number	Defect Type	Defect Description	CS	CS Qty	Maint Qty
111	Check/Shake	Checks to 1/8"	2	18	18 Feet

General Comments

Span 2 Beam 18

Timber Joist

Element Number	Element Name	Total Qty	CS1 Qty	CS2 Qty	CS3 Qty	CS4 Qty
111	Timber Open Girder/Beam	18	0	18	0	0 Feet

Element Number	Defect Type	Defect Description	CS	CS Qty	Maint Qty
111	Check/Shake	Checks to 1/8"	2	18	18 Feet

General Comments

Span 2 Beam 19

Timber Joist

Element Number	Element Name	Total Qty	CS1 Qty	CS2 Qty	CS3 Qty	CS4 Qty
111	Timber Open Girder/Beam	18	0	18	0	0 Feet

Element Number	Defect Type	Defect Description	CS	CS Qty	Maint Qty
111	Check/Shake	Checks to 1/8"	2	18	18 Feet

General Comments

Span 2 Wearing Surface

Asphalt Wearing Surface

Element Number	Element Name	Total Qty	CS1 Qty	CS2 Qty	CS3 Qty	CS4 Qty
510	Wearing Surface	468	468	0	0	0 Square Feet

Element Number	Defect Type	Defect Description	CS	CS Qty	Maint Qty

General Comments

Span 2 Left Bridge Rail

Concrete Railing

Element Number	Element Name	Total Qty	CS1 Qty	CS2 Qty	CS3 Qty	CS4 Qty
331	Reinforced Concrete Bridge Railing	18	0	18	0	0 Feet

Element Number	Defect Type	Defect Description	CS	CS Qty	Maint Qty
331	Cracking (RC and Other)	Random hairline cracking	2	18	Feet

General Comments

Span 2 Right Bridge Rail

Concrete Railing

Element Number	Element Name	Total Qty	CS1 Qty	CS2 Qty	CS3 Qty	CS4 Qty
331	Reinforced Concrete Bridge Railing	18	0	18	0	0 Feet

Element Number	Defect Type	Defect Description	CS	CS Qty	Maint Qty
331	Cracking (RC and Other)	Random hairline cracking	2	18	Feet

General Comments

End Bent 1 Cap 1

Timber Pier Cap

Element Number	Element Name	Total Qty	CS1 Qty	CS2 Qty	CS3 Qty	CS4 Qty
235	Timber Pier Cap	26	0	26	0	0 Feet

Element Number	Defect Type	Defect Description	CS	CS Qty	Maint Qty

235 Check/Shake Checks to 1/8" 2 26 26 Feet

General Comments

End Bent 1 Pile 1

Timber Pile

Element Number	Element Name	Total Qty	CS1 Qty	CS2 Qty	CS3 Qty	CS4 Qty
228	Timber Pile	1	0	1	0	0 Each

Element Number	Defect Type	Defect Description	CS	CS Qty	Maint Qty
228	Check/Shake	Checks to 1/8"	2	1	1 Each

General Comments

End Bent 1 Pile 2

Timber Pile

Element Number	Element Name	Total Qty	CS1 Qty	CS2 Qty	CS3 Qty	CS4 Qty
228	Timber Pile	1	0	1	0	0 Each

Element Number	Defect Type	Defect Description	CS	CS Qty	Maint Qty
228	Check/Shake	Checks to 1/8"	2	1	1 Each

General Comments

End Bent 1 Pile 3

Timber Pile

Element Number	Element Name	Total Qty	CS1 Qty	CS2 Qty	CS3 Qty	CS4 Qty
228	Timber Pile	1	0	1	0	0 Each

Element Number	Defect Type	Defect Description	CS	CS Qty	Maint Qty
228	Check/Shake	Checks to 1/8"	2	1	1 Each

General Comments

End Bent 1 Pile 4

Timber Pile

Element Number	Element Name	Total Qty	CS1 Qty	CS2 Qty	CS3 Qty	CS4 Qty
228	Timber Pile	1	0	1	0	0 Each

Element Number	Defect Type	Defect Description	CS	CS Qty	Maint Qty
228	Decay/Section Loss	Surface decay	2	1	1 Each

General Comments

Bent 1 Cap 1
Timber Pier Cap

Element Number	Element Name	Total Qty	CS1 Qty	CS2 Qty	CS3 Qty	CS4 Qty
235	Timber Pier Cap	26	0	26	0	0 Feet

Element Number	Defect Type	Defect Description	CS	CS Qty	Maint Qty
235	Check/Shake	Checks to 1/8"	2	26	26 Feet

General Comments

Bent 1 Pile 1
Timber Pile

Element Number	Element Name	Total Qty	CS1 Qty	CS2 Qty	CS3 Qty	CS4 Qty
228	Timber Pile	1	0	1	0	0 Each

Element Number	Defect Type	Defect Description	CS	CS Qty	Maint Qty
228	Check/Shake	Checks to 1/8"	2	1	1 Each

General Comments

Bent 1 Pile 2
Timber Pile

Element Number	Element Name	Total Qty	CS1 Qty	CS2 Qty	CS3 Qty	CS4 Qty
228	Timber Pile	1	0	1	0	0 Each

Element Number	Defect Type	Defect Description	CS	CS Qty	Maint Qty
228	Check/Shake	Checks to 1/8"	2	1	1 Each

General Comments

Bent 1 Pile 3
Timber Pile

Element Number	Element Name	Total Qty	CS1 Qty	CS2 Qty	CS3 Qty	CS4 Qty
228	Timber Pile	1	0	1	0	0 Each

Element Number	Defect Type	Defect Description	CS	CS Qty	Maint Qty
228	Check/Shake	Checks to 1/8"	2	1	1 Each

General Comments

Bent 1 Pile 4
Timber Pile

Element Number	Element Name	Total Qty	CS1 Qty	CS2 Qty	CS3 Qty	CS4 Qty
228	Timber Pile	1	0	1	0	0 Each

Element Number	Defect Type	Defect Description	CS	CS Qty	Maint Qty
228	Check/Shake	Checks to 1/8"	2	1	1 Each

General Comments

End Bent 1 Abutment

Timber Abutment

Element Number	Element Name	Total Qty	CS1 Qty	CS2 Qty	CS3 Qty	CS4 Qty
216	Timber Abutment	26	0	26	0	0 Feet

Element Number	Defect Type	Defect Description	CS	CS Qty	Maint Qty
216	Check/Shake	Checks to 1/8"	2	26	26 Feet

General Comments

End Bent 2 Abutment

Timber Abutment

Element Number	Element Name	Total Qty	CS1 Qty	CS2 Qty	CS3 Qty	CS4 Qty
216	Decay/Section Loss	Bulkhead board 1 near north east retention pile - 3'long x 5" high missing	4	3	3	3 Feet
216	Scour	Undermining under bulkhead board #8 and losing fill.	4	3	3	3 Feet
216	Check/Shake	Checks to 1/8"	2	20	20	20 Feet

General Comments

End Bent 2 Cap 1

Timber Pier Cap

Element Number	Element Name	Total Qty	CS1 Qty	CS2 Qty	CS3 Qty	CS4 Qty
235	Timber Pier Cap	26	0	24	0	2 Feet

Element Number	Defect Type	Defect Description	CS	CS Qty	Maint Qty
235	Decay/Section Loss	Left end of cap decayed 4" deep x 5" wide x 5" long	4	1	1 Feet
235	Decay/Section Loss	Right end of cap decayed 1' deep x 6" wide x 6" long	4	1	1 Feet
235	Check/Shake	Checks to 1/8"	2	24	24 Feet

General Comments

End Bent 2 Pile 1

Timber Pile

Element Number	Element Name	Total Qty	CS1 Qty	CS2 Qty	CS3 Qty	CS4 Qty
228	Timber Pile	1	0	1	0	0 Each

Element Number	Defect Type	Defect Description	CS	CS Qty	Maint Qty
228	Check/Shake	Checks to 1/8"	2	1	1 Each

General Comments

End Bent 2 Pile 2
Timber Pile

Element Number	Element Name	Total Qty	CS1 Qty	CS2 Qty	CS3 Qty	CS4 Qty
228	Timber Pile	1	0	1	0	0 Each

Element Number	Defect Type	Defect Description	CS	CS Qty	Maint Qty
228	Check/Shake	Checks to 1/8"	2	1	1 Each

General Comments

End Bent 2 Pile 3
Timber Pile

Element Number	Element Name	Total Qty	CS1 Qty	CS2 Qty	CS3 Qty	CS4 Qty
228	Timber Pile	1	0	1	0	0 Each

Element Number	Defect Type	Defect Description	CS	CS Qty	Maint Qty
228	Check/Shake	Checks to 1/8"	2	1	1 Each

General Comments

End Bent 2 Pile 4
Timber Pile

Element Number	Element Name	Total Qty	CS1 Qty	CS2 Qty	CS3 Qty	CS4 Qty
228	Timber Pile	1	0	1	0	0 Each

Element Number	Defect Type	Defect Description	CS	CS Qty	Maint Qty
228	Check/Shake	Checks to 1/8"	2	1	1 Each

General Comments

Crutch Bent 1 Span 2 Steel Pier Cap 1
Steel Pier Cap

Element Number	Element Name	Total Qty	CS1 Qty	CS2 Qty	CS3 Qty	CS4 Qty
231	Steel Pier Cap	26	0	26	0	0 Feet
515	Steel Protective Coating	26	0	26	0	0 Square Feet

Element Number	Defect Type	Defect Description	CS	CS Qty	Maint Qty
231	Corrosion	Freckled rust	2	26	Feet
515	Effectiveness (Steel Protective Coatings)	Partially effective	2	26	26 Square Feet

General Comments

Crutch Bent 1 Span 2 Steel Pile 1

Steel Pile

Element Number	Element Name	Total Qty	CS1 Qty	CS2 Qty	CS3 Qty	CS4 Qty	
225	Steel Pile	1	0	1	0	0	Each
515	Steel Protective Coating	16	0	16	0	0	Square Feet

Element Number	Defect Type	Defect Description	CS	CS Qty	Maint Qty	
225	Corrosion	Freckled rust	2	1		Each
515	Effectiveness (Steel Protective Coatings)	Partially effective	2	16	16	Square Feet

General Comments

Crutch Bent 1 Span 2 Steel Pile 2

Steel Pile

Element Number	Element Name	Total Qty	CS1 Qty	CS2 Qty	CS3 Qty	CS4 Qty	
225	Steel Pile	1	0	1	0	0	Each
515	Steel Protective Coating	16	0	16	0	0	Square Feet

Element Number	Defect Type	Defect Description	CS	CS Qty	Maint Qty	
225	Corrosion	Freckled rust	2	1		Each
515	Effectiveness (Steel Protective Coatings)	Partially effective	2	16	16	Square Feet

General Comments

Crutch Bent 1 Span 2 Steel Pile 3

Steel Pile

Element Number	Element Name	Total Qty	CS1 Qty	CS2 Qty	CS3 Qty	CS4 Qty	
225	Steel Pile	1	0	1	0	0	Each
515	Steel Protective Coating	16	0	16	0	0	Square Feet

Element Number	Defect Type	Defect Description	CS	CS Qty	Maint Qty	
225	Corrosion	Freckled rust	2	1		Each
515	Effectiveness (Steel Protective Coatings)	Partially effective	2	16	16	Square Feet

General Comments

Crutch Bent 1 Span 2 Steel Pile 4

Steel Pile

Element Number	Element Name	Total Qty	CS1 Qty	CS2 Qty	CS3 Qty	CS4 Qty	
225	Steel Pile	1	0	1	0	0	Each
515	Steel Protective Coating	16	0	16	0	0	Square Feet

Element Number	Defect Type	Defect Description	CS	CS Qty	Maint Qty	
225	Corrosion	Freckled rust	2	1		Each
515	Effectiveness (Steel Protective Coatings)	Partially effective	2	16	16	Square Feet

General Comments

Elements Verified

Location	Name	Component	Element Name	Amount
Span 1	Beam 1	Timber Joist	Timber Open Girder/Beam	18
Span 1	Beam 2	Timber Joist	Timber Open Girder/Beam	18
Span 1	Beam 3	Timber Joist	Timber Open Girder/Beam	18
Span 1	Beam 4	Timber Joist	Timber Open Girder/Beam	18
Span 1	Beam 5	Timber Joist	Timber Open Girder/Beam	18
Span 1	Beam 6	Timber Joist	Timber Open Girder/Beam	18
Span 1	Beam 7	Timber Joist	Timber Open Girder/Beam	18
Span 1	Beam 8	Timber Joist	Timber Open Girder/Beam	18
Span 1	Beam 9	Timber Joist	Timber Open Girder/Beam	18
Span 1	Beam 10	Timber Joist	Timber Open Girder/Beam	18
Span 1	Beam 11	Timber Joist	Timber Open Girder/Beam	18
Span 1	Beam 12	Timber Joist	Timber Open Girder/Beam	18
Span 1	Beam 13	Timber Joist	Timber Open Girder/Beam	18
Span 1	Beam 14	Timber Joist	Timber Open Girder/Beam	18
Span 1	Beam 15	Timber Joist	Timber Open Girder/Beam	18
Span 1	Beam 16	Timber Joist	Timber Open Girder/Beam	18
Span 1	Beam 17	Timber Joist	Timber Open Girder/Beam	18
Span 1	Beam 18	Timber Joist	Timber Open Girder/Beam	18
Span 1	Beam 19	Timber Joist	Timber Open Girder/Beam	18
Span 1	Left Bridge Rail	Concrete Railing	Reinforced Concrete Bridge Railing	18
Span 1	Right Bridge Rail	Concrete Railing	Reinforced Concrete Bridge Railing	18
Span 1	Wearing Surface	Asphalt Wearing Surface	Wearing Surface	468
Span 2	Beam 1	Timber Joist	Timber Open Girder/Beam	18
Span 2	Beam 2	Timber Joist	Timber Open Girder/Beam	18
Span 2	Beam 3	Timber Joist	Timber Open Girder/Beam	18
Span 2	Beam 4	Timber Joist	Timber Open Girder/Beam	18
Span 2	Beam 5	Timber Joist	Timber Open Girder/Beam	18
Span 2	Beam 6	Timber Joist	Timber Open Girder/Beam	18
Span 2	Beam 7	Timber Joist	Timber Open Girder/Beam	18
Span 2	Beam 8	Timber Joist	Timber Open Girder/Beam	18
Span 2	Beam 9	Timber Joist	Timber Open Girder/Beam	18
Span 2	Beam 10	Timber Joist	Timber Open Girder/Beam	18
Span 2	Beam 11	Timber Joist	Timber Open Girder/Beam	18
Span 2	Beam 12	Timber Joist	Timber Open Girder/Beam	18
Span 2	Beam 13	Timber Joist	Timber Open Girder/Beam	18
Span 2	Beam 14	Timber Joist	Timber Open Girder/Beam	18
Span 2	Beam 15	Timber Joist	Timber Open Girder/Beam	18
Span 2	Beam 16	Timber Joist	Timber Open Girder/Beam	18
Span 2	Beam 17	Timber Joist	Timber Open Girder/Beam	18
Span 2	Beam 18	Timber Joist	Timber Open Girder/Beam	18
Span 2	Beam 19	Timber Joist	Timber Open Girder/Beam	18
Span 2	Left Bridge Rail	Concrete Railing	Reinforced Concrete Bridge Railing	18
Span 2	Right Bridge Rail	Concrete Railing	Reinforced Concrete Bridge Railing	18
Span 2	Wearing Surface	Asphalt Wearing Surface	Wearing Surface	468
Bent 1	Cap 1	Timber Pier Cap	Timber Pier Cap	26

Elements Verified

Location	Name	Component	Element Name	Amount
Bent 1	Pile 1	Timber Pile	Timber Pile	1
Bent 1	Pile 2	Timber Pile	Timber Pile	1
Bent 1	Pile 3	Timber Pile	Timber Pile	1
Bent 1	Pile 4	Timber Pile	Timber Pile	1
End Bent 1	Cap 1	Timber Pier Cap	Timber Pier Cap	26
End Bent 1	Pile 1	Timber Pile	Timber Pile	1
End Bent 1	Pile 2	Timber Pile	Timber Pile	1
End Bent 1	Pile 3	Timber Pile	Timber Pile	1
End Bent 1	Pile 4	Timber Pile	Timber Pile	1
End Bent 1	Abutment	Timber Abutment	Timber Abutment	26
End Bent 2	Cap 1	Timber Pier Cap	Steel Pier Cap	26
End Bent 2	Cap 1	Timber Pier Cap	Timber Pier Cap	26
End Bent 2	Pile 1	Timber Pile	Timber Pile	1
End Bent 2	Pile 1	Timber Pile	Steel Pile	1
End Bent 2	Pile 2	Timber Pile	Steel Pile	1
End Bent 2	Pile 2	Timber Pile	Timber Pile	1
End Bent 2	Pile 3	Timber Pile	Timber Pile	1
End Bent 2	Pile 3	Timber Pile	Steel Pile	1
End Bent 2	Pile 4	Timber Pile	Steel Pile	1
End Bent 2	Pile 4	Timber Pile	Timber Pile	1
Crutch Bent 1 Span 2		Steel Pier Cap	Steel Pier Cap	26
Crutch Bent 1 Span 2		Steel Pile	Steel Pile	1
Crutch Bent 1 Span 2		Steel Pile	Steel Pile	1
Crutch Bent 1 Span 2		Steel Pile	Steel Pile	1
Crutch Bent 1 Span 2		Steel Pile	Steel Pile	1

General Inspection Notes

Span 2

Wearing Surface

National Bridge and NC Inspection Items

Structure Number: 970143

Inspection Date: 05/03/2017

National Bridge Inventory Items

Item	Grade Scale	Grade
Item 58: Deck	0 - 9 , N	6
Item 59: Superstructure	0 - 9 , N	6
Item 60: Substructure	0 - 9 , N	6
Item 61: Channel and Channel Protection	0 - 9 , N	6
Item 62: Culvert	0 - 9 , N	N
Item 71: Waterway Adequacy	0 - 9 , N	6
Item 72: Approach Roadway Alignment	0 - 9 , N	8

Note: If NBI Inspection Item is not present, code NBI item with "N"

NC SMU Inspection Items

Item	Grade Scale	Grade	Maint. Qty.	Maint. Code
Deck Debris	G, F, P, or C	F	864	3376
Drainage System	G, F, P, or C	G	0	3332
Utilities	G, F, P, or C			
Slope Protection	G, F, P, or C		0	3352
Scour	G, F, P, or C	F		
Wingwall	G, F, P, or C	F	2	3350
Field Scour Evaluation				
Drift	G, F, P, or C	G	0	3366
Fender System	G, F, P, or C			
Movable Span Machinery	G, F, P, or C			
Response to Live Load	G, F, P, or C	G		
Estimated Remaining Life	0 - 100 Years	9		
Superstructure Paint Code				

Note: If NC SMU Inspection Item is not present, leave NC SMU item blank

Inspection Information

Item	Grade Scale	Grade
Regulatory Sign Noticed Issued	YES/NO	N
Priority Maintenance Request Submitted	YES/NO	Y
Inspection Time	Hours	9
Traffic Control Time	Hours	0
Snooper Time	Hours	0
Ladder Used	YES/NO	N
Bucket Truck Used	YES/NO	N
Boat Used	YES/NO	N
Other Equipment Used	YES/NO	Y

National Bridge and NC SMU Inspection Item Details

Structure Number: 970143

Inspection Date: 05/03/2017

Item	Priority Maintenance Issued	Grade	Y	Maint Code	Qty.	0
------	-----------------------------	-------	---	------------	------	---

Details End bent 2 between pile 1 and pile 2 bulkhead boards undermin and losing fill directly below sink hole.

Item	Other Equipment Used	Grade	Y	Maint Code	Qty.	0
------	----------------------	-------	---	------------	------	---

Details DRYsuit

Item	Deck Debris	Grade	F	Maint Code	3376	Qty.	864
------	-------------	-------	---	------------	------	------	-----

Details Right side of deck has dirt and vegetation buildup.

Item	Scour	Grade	F	Maint Code	Qty.	0
------	-------	-------	---	------------	------	---

Details End bent 2 between pile 1 and pile 2 bulkhead boards undermin and losing fill directly below sink hole.

Item	Wingwalls	Grade	F	Maint Code	3350	Qty.	2
------	-----------	-------	---	------------	------	------	---

Details 100% decay on wingwall retention piles. south east retention pile and south west retention pile 100% decayed.



DECK DEBRIS



HAIRLINE CRACK IN AWS OVER BENT 1



SOUTH EAST RETAINING PILE 100% DECAY



END BENT 2 RIGHT END OF CAP DECAY (BEYOND CRUTCH BENT)



CRUTCH BENT AT END BENT 2



BULKHEAD BOARD 1 LEFT AT END BENT 2 MISSING 3'



BEAM 1 AT END BENT 2 DECAYED (BEYOND CRUTCH BENT)



BEAM 19 SPAN 1 - 1" WIDE SPLIT OVER BENT 1 - 2' LONG



BEAM 19 SPAN 1 ROTATED INWARD 1.5" MIDSPAN BENT 1



SOUTH WEST RETAINING PILE 100% DECAYED



SINKHOLE NEAR NORTH EAST CORNER DOWN TO BULKHEAD BOARD #8



LOOKING EAST



LOOKING WEST



LOOKING NORTH



NORTH PROFILE



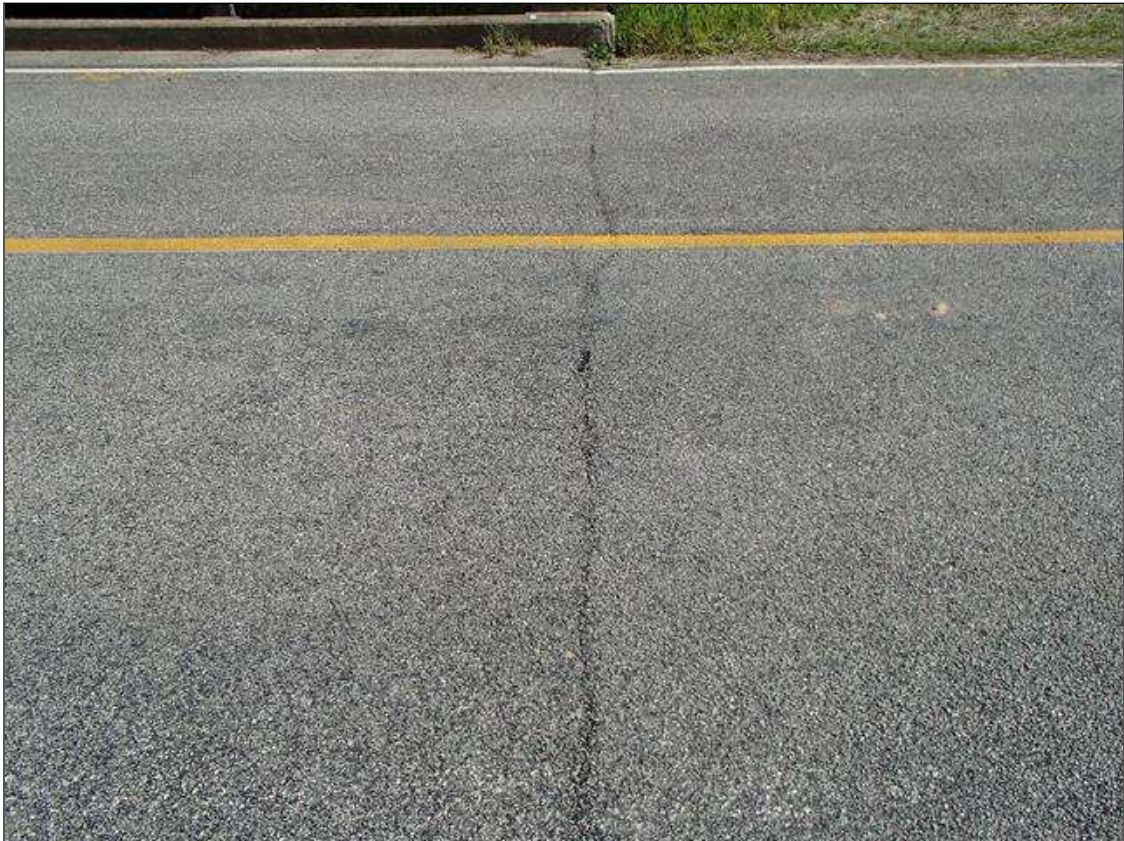
LOOKING SOUTH



SOUTH PROFILE



AWS



EAST APPROACH



WEST APPROACH



CURB AND RAIL OVERVIEW



BENT 1 SPAN 2



SUPERSTRUCTURE SPAN 2



UNDERSIDE OF DECK SPAN 2



BENT 1



PILE 1 AT BENT 1



BEAM 3 SPAN 1 SHOWING CHECKS, TYPICAL