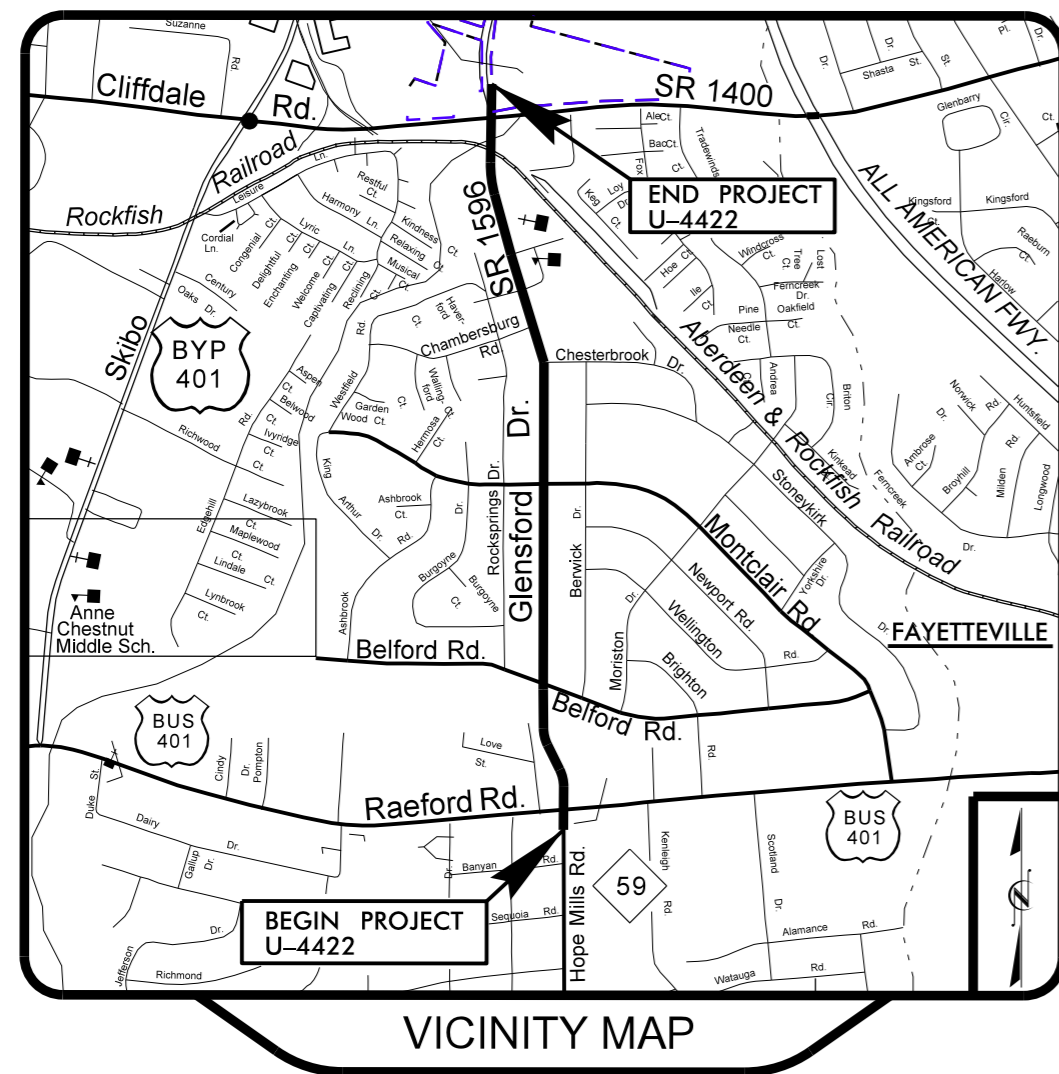


U-4422

PROJECT: 35024.3.3

HIGHWAY LANDSCAPE DEVELOPMENT PROJECT



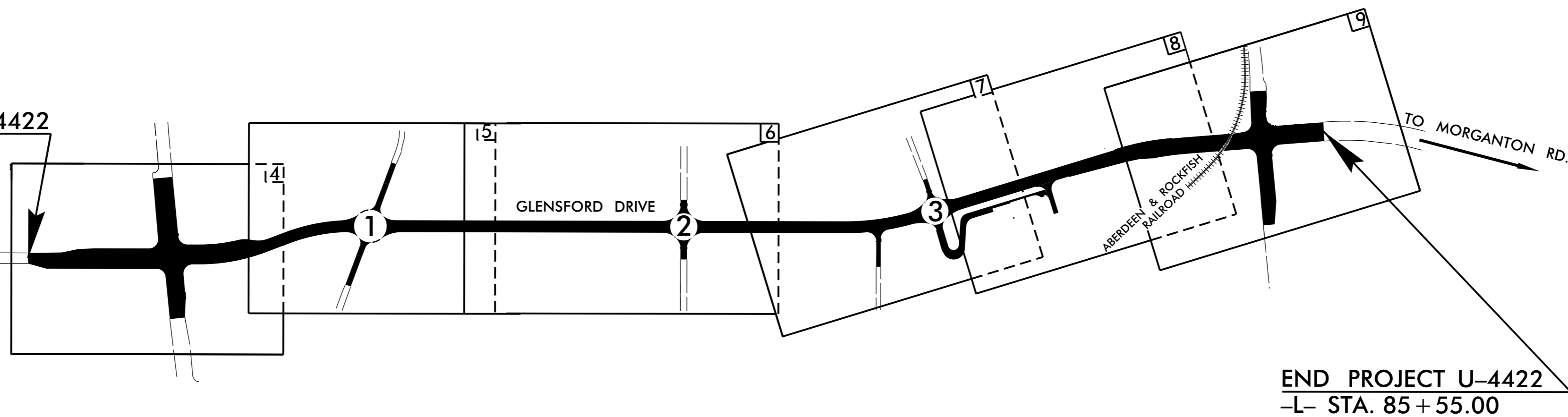
CUMBERLAND COUNTY

LOCATION: FAYETTEVILLE - SR 1596 (GLENSFORD DRIVE)
FROM US 401 BUSINESS (RAEFORD ROAD)
TO SR 1400 (CLIFFDALE ROAD)



BEGIN PROJECT U-4422
-L- STA. 11+00.00

TO HOPE MILLS
HOPE MILLS RD/US 59



END PROJECT U-4422
-L- STA. 85+55.00

T.I.P. #	STATE PROJECT W.B.S. #	SHEET #	SHEET # TOTAL
U-4422	35024.3.3	L-1	16
FED. PROJ. #	DESCRIPTION	DIVISION	
-	PAC	6	

CONVENTIONAL SYMBOLS

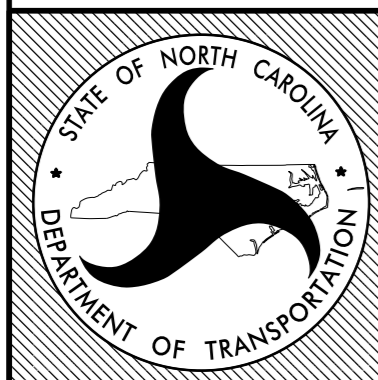
County Line.....	-----
City or Town Line.....	-----
Exist. Right of Way Line Marker.....	-----▲-----
Prop. Right of Way Line Marker (By Others).....	-----▲-----
Prop Right of Way Line Marker (By Contract).....	-----▲-----
Exist. Control of Access Line.....	-----C-----
Prop. Control of Access Line.....	-----C-----
Property Line.....	-----
Easement Line.....	-----E-----
Slope Stake Line.....	-----S-----
Exist. Fence.....	-----
Prop. Woven Wire Fence.....	-----
Prop. Chain Link Fence.....	-----
Exist. Road.....	-----
Prop. Road.....	-----
Guardrail.....	-----
Survey Line.....	-----
Denotes Line Equality.....	-----
Bridge.....	-----
Culvert.....	-----
Railroad.....	-----
Woods.....	-----
Exist. Telephone Pole.....	-----
Prop. Telephone Pole.....	-----
Tower Pole and Line.....	-----
Exist. Power Pole.....	-----
Prop. Power Pole.....	-----
Sanitary Sewer Line.....	-----
Water Line.....	-----
Gas Line.....	-----
Picnic Shelter.....	-----
Regeneration.....	-----
Reforestation.....	-----

INDEX OF L SHEETS:

- L 1.0 ... TITLE, DESCRIPTION, LOCATION
- L 2.0 ... SUMMARY OF QUANTITIES
- L 3.0 ... PLANTING DETAILS
- L 4.0 - 9.0 ... PLANTING PLANS
- LI 10.0 ... IRRIGATION NOTES
- LI 11.0 - 16.0 ... IRRIGATION PLANS

PREPARED BY: **BM** DATE: 4/2013
REVISIONS 10/2013

DATE	DESCRIPTION



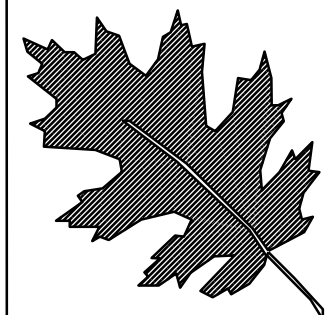
STATE OF
NORTH CAROLINA
DEPARTMENT OF TRANSPORTATION

LOCATION: Glensford Drive (SR 1596) in Fayetteville
TYPE of WORK: Landscape Planting - Irrigation Plan
COUNTY: Cumberland County

2004 American Standard for Nursery Stock
2012 NCDOT STANDARD SPECIFICATIONS
PREPARED IN THE OFFICE OF:
NCDOT- ROADSIDE ENVIRONMENTAL UNIT
LANDSCAPE DESIGN & DEVELOPMENT SECTION
1557 MAIL SERVICE CENTER
RALEIGH NC 27699 919-707-2920

Landscape Planting Summary of Quantities

DES	SEC	QUAN	UNIT	KEY	BOTANICAL NAME	COMMON NAME	SIZE	CALIPER	FURNISH	A.S.N.S	REMARKS
I	1670	292	ea	hb	hemerocallis 'battered popcorn'	battered popcorn daylily	12-15"		#1 cont.	12.2.3	as shown
I	1670	88	ea	lc	lagerstroemia indica 'catawba'	catawba crape myrtle	6-8'		b&b	1.3	as shown single stem
I	1670	52	ea	ln	lagerstroemia indica 'natchez'	natchez crape myrtle	6-8'		b&b	1.3	as shown single stem
I	1670	116	ea	rk	rosa x 'knock-out radrazz'	red knock out rose	18-24"		#3 cont.	5.2	as shown
I	1670	150	CY		mulch for planting						
I	1670	25	m/g		water for planting						
I	1670	25000	sy		pre emergence herbicidal treatment						
I	1670	12500	sy		post emergence herbicidal treatment						
I	1670	1000	CY		topsoil-3" depth (weed free)						
I	1670	12500	sy		tifblair centipede sod						



NCDOT - ROADSIDE ENVIRONMENTAL UNIT
 LANDSCAPE DESIGN & DEVELOPMENT
 1557 MAIL SERVICE CENTER, RALEIGH, NC 27699-1557
 PH: 919-707-2920 FAX: 919-715-2554
http://www.ncdot.org/doh/operations/dp_chief_eng/roadside/

Glensford Drive (SR 1596)
 Fayetteville NC

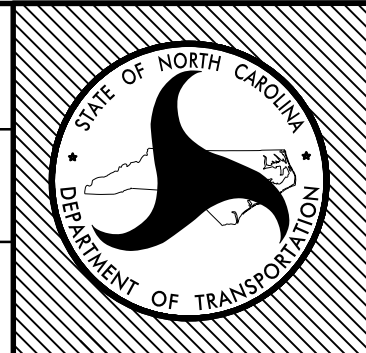
project #: 35024.3.3

re u engineer

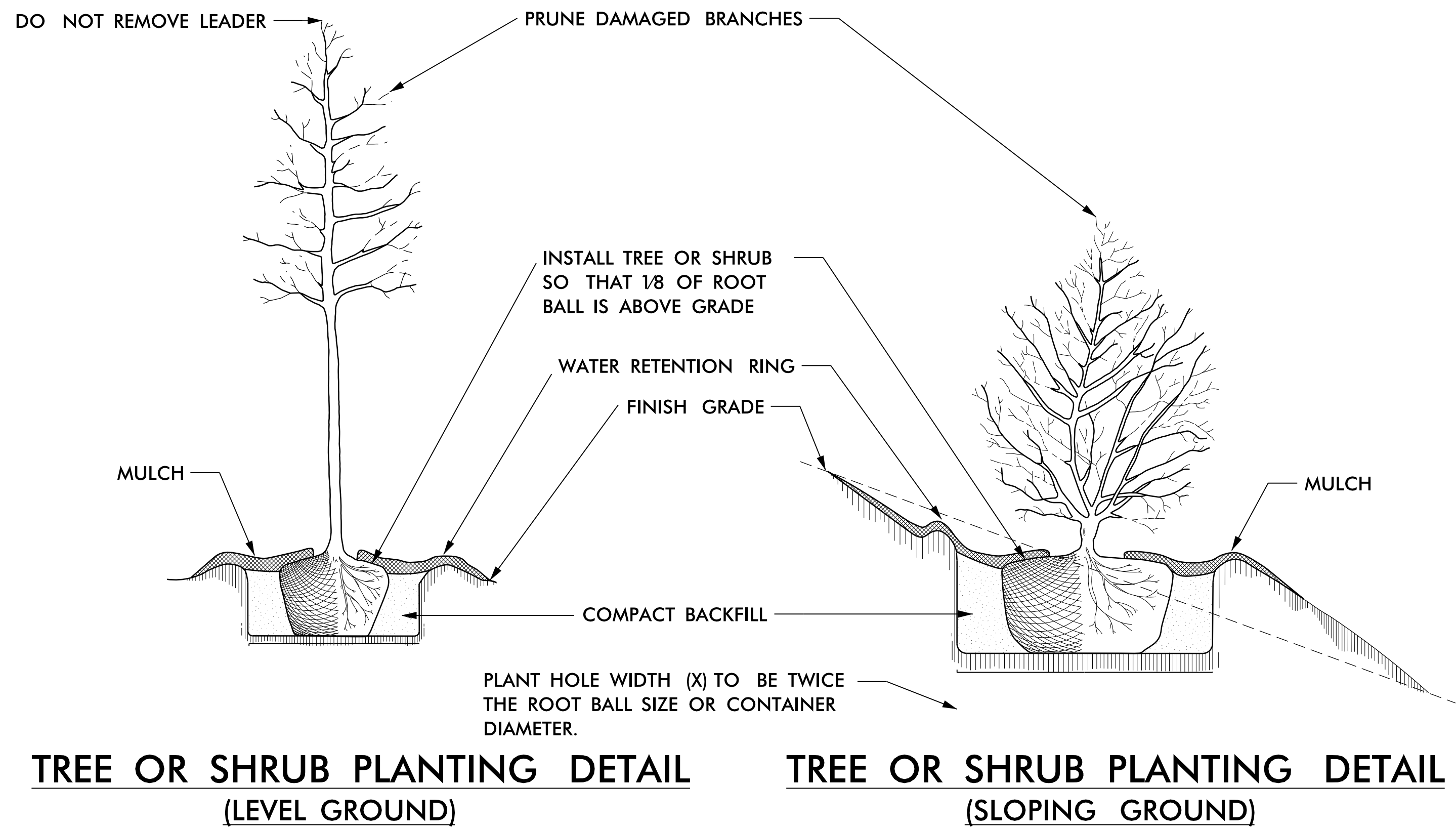
 B. Minter Sr.

sheet description:
 landscape planting
 planting plan

prel design date: april 2013
 checked by & date :
 final design date : oct. 2013

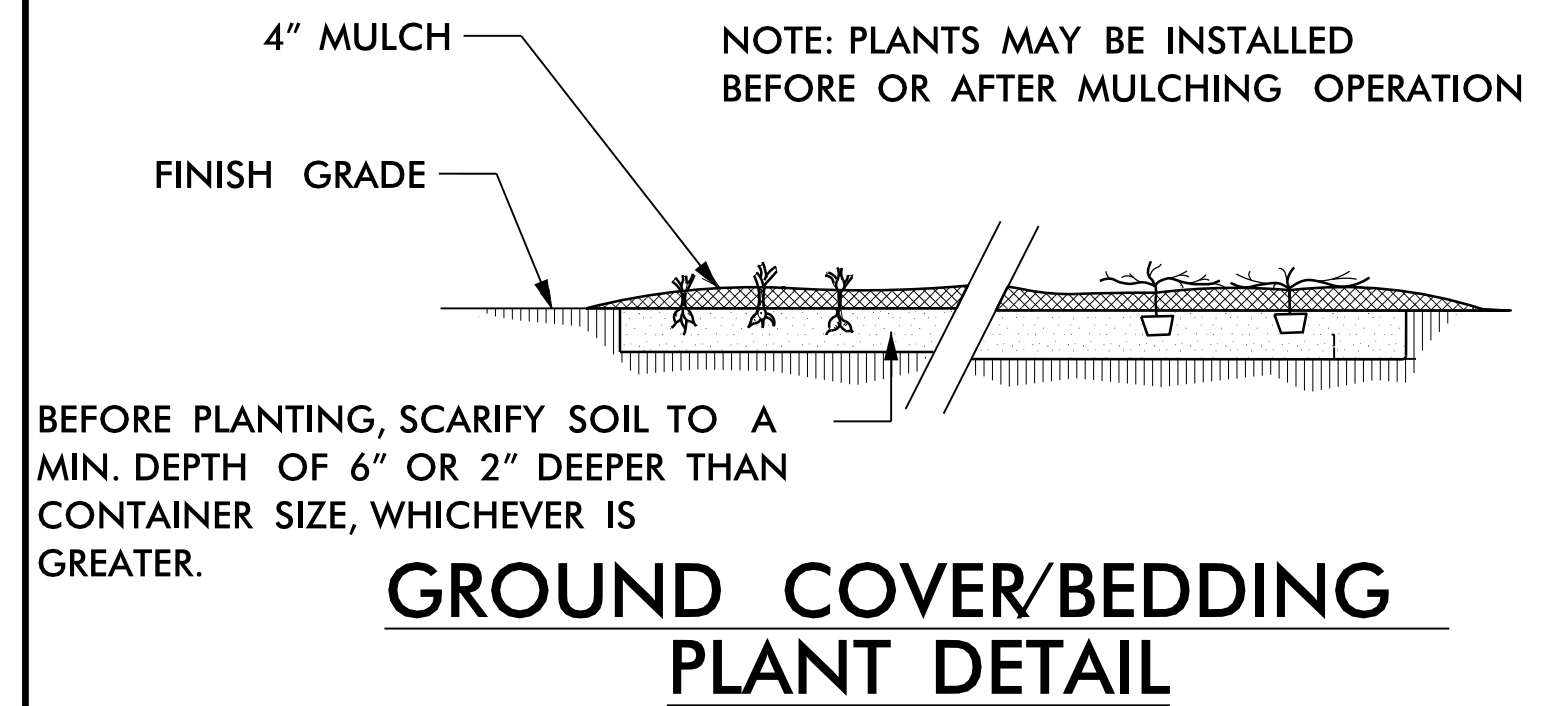


sheet no :
L-2
 total sheet no :
 16

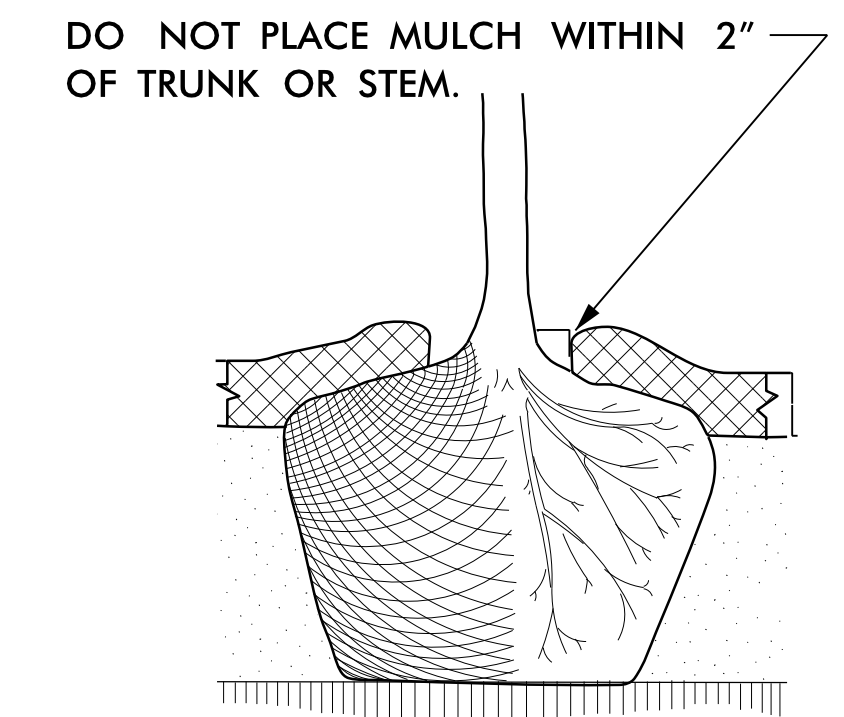


TREE OR SHRUB PLANTING DETAIL
(LEVEL GROUND)

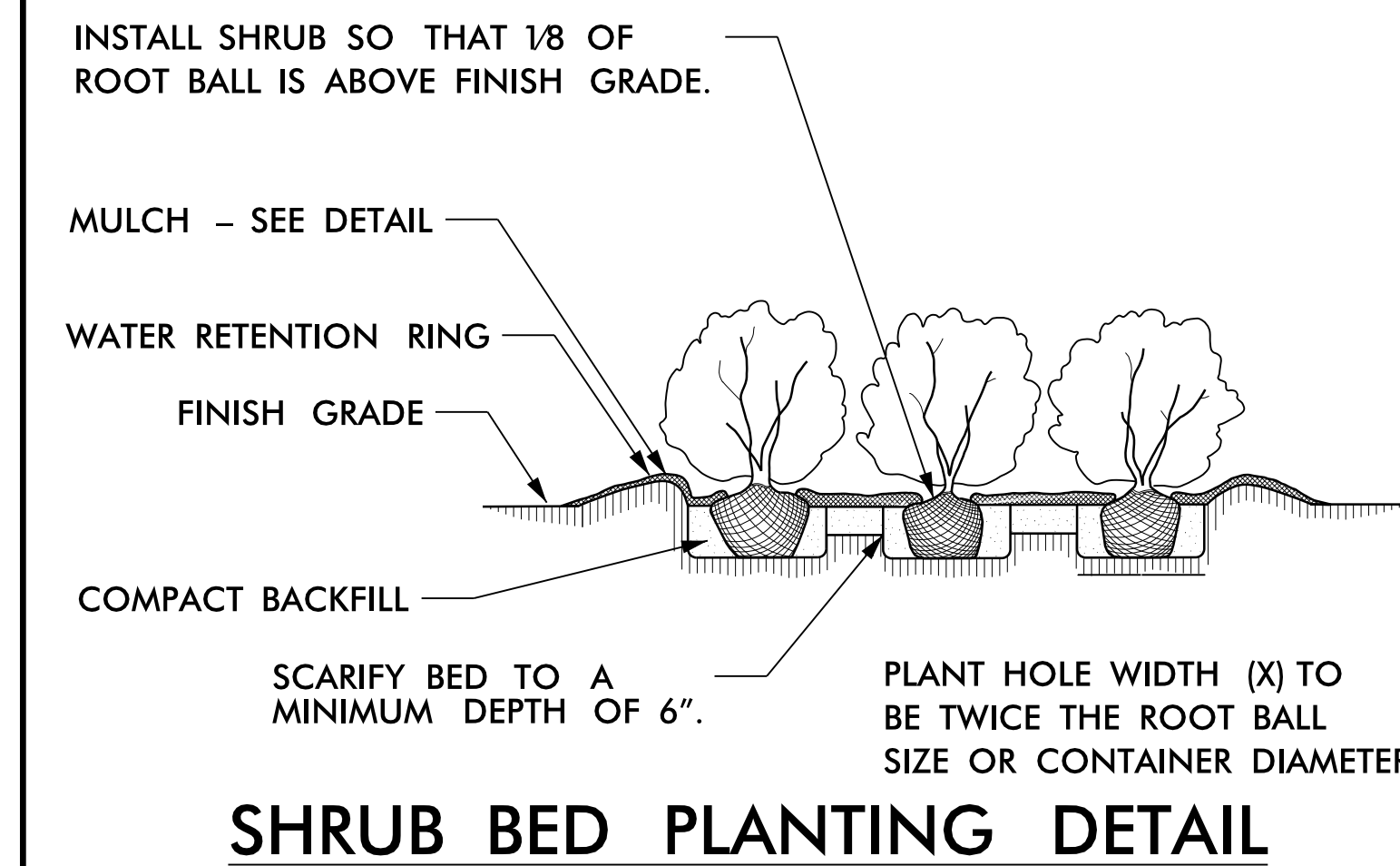
TREE OR SHRUB PLANTING DETAIL
(SLOPING GROUND)



GROUND COVER/BEDDING PLANT DETAIL



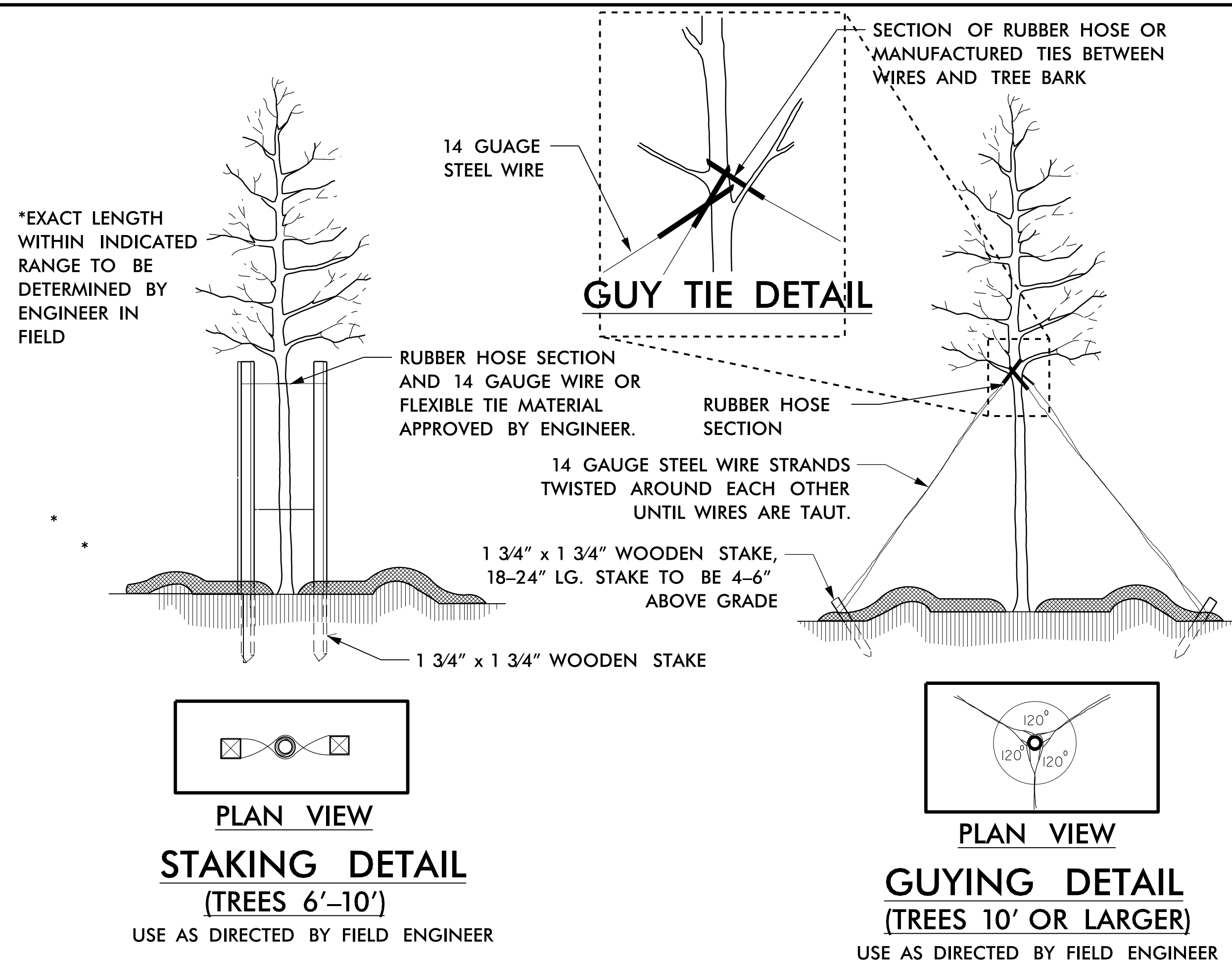
MULCH DETAIL



SHRUB BED PLANTING DETAIL

NOTES:

- SCHEDULE FOR PLANT HOLE SIZE: PLANT HOLE WIDTH (X) TO BE TWICE THE ROOT BALL SIZE OR CONTAINER DIAMETER.
- SEE STANDARD SPECIFICATIONS FOR PLANT BED FUMIGATION AND HERBICIDAL TREATMENT.
- APPLY FERTILIZER AT PLANTING TIME IN THE FORM OF A SLOW RELEASE PELLET OR TABLET. APPLY AT RATE RECOMMENDED BY MANUFACTURER. BOTH RATE AND FORMULATION MUST BE APPROVED BY FIELD ENGINEER PRIOR TO APPLICATION.
- REMOVE WIRE BASKET AND FOLD BURLAP BACK FROM TOP OF ROOT BALL BEFORE BACKFILLING IS COMPLETE.
- ALL PRUNING TO FOLLOW STANDARD ARBORICULTURAL PRACTICES AS SPECIFIED BY INTERNATIONAL SOCIETY OF ARBORICULTURE.
- DO NOT ATTEMPT TO STRAIGHTEN A TREE THAT HAS BEEN PLANTED AT AN ANGLE WITH THE USE OF STAKING OR GUYING. DIG TREE AND REPLANT TO UPRIGHT POSITION.

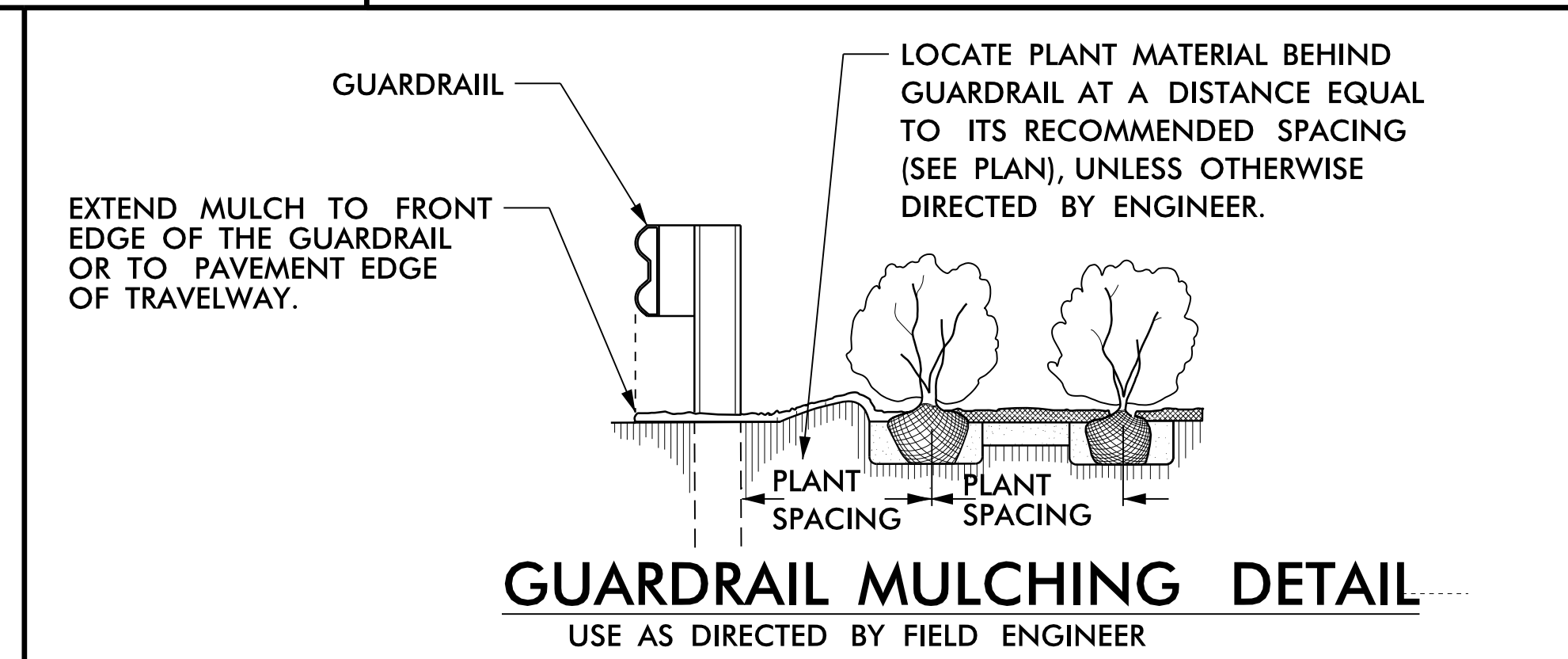


STAKING DETAIL
(TREES 6'-10')

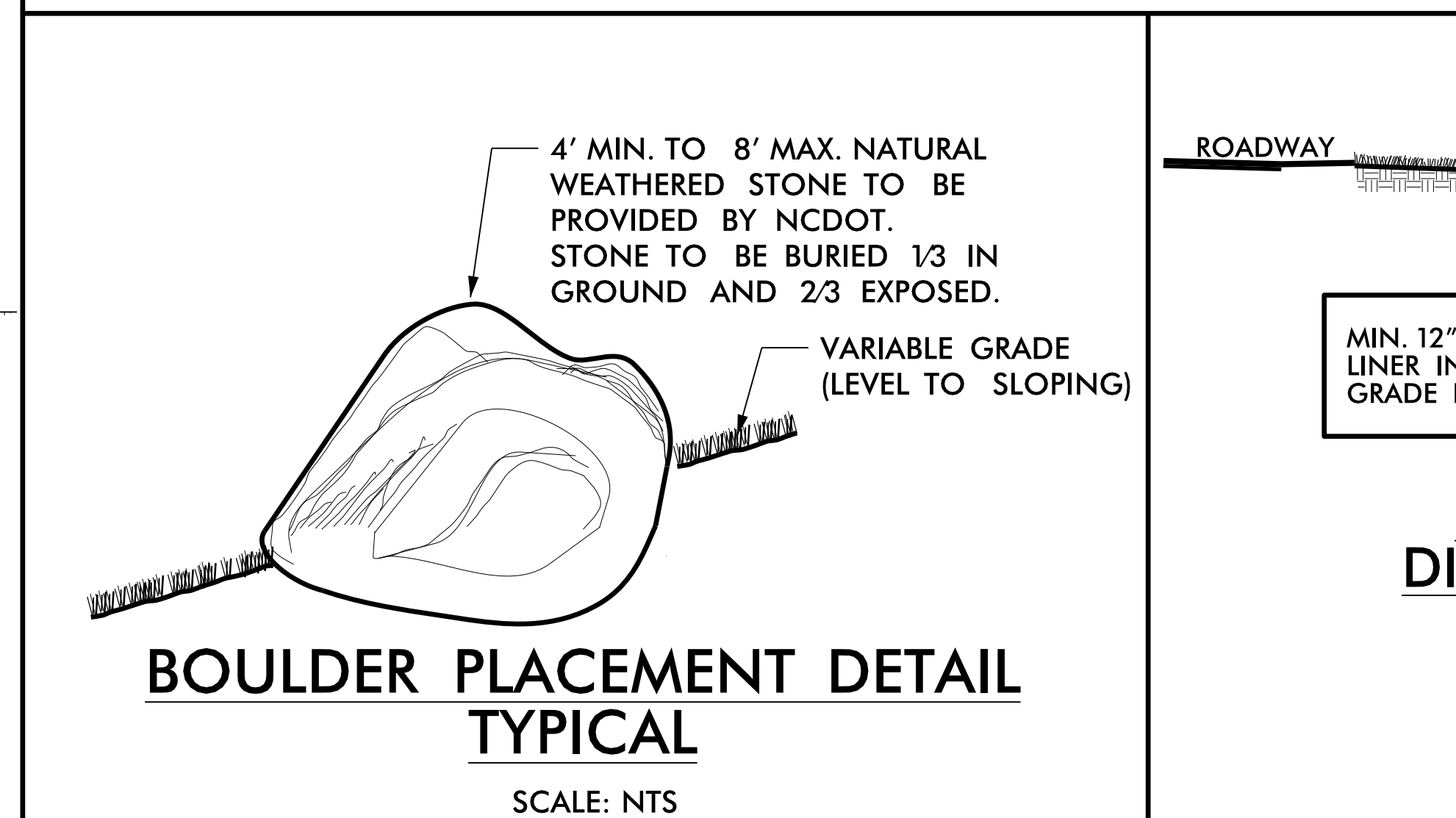
USE AS DIRECTED BY FIELD ENGINEER

GUYING DETAIL
(TREES 10' OR LARGER)

USE AS DIRECTED BY FIELD ENGINEER

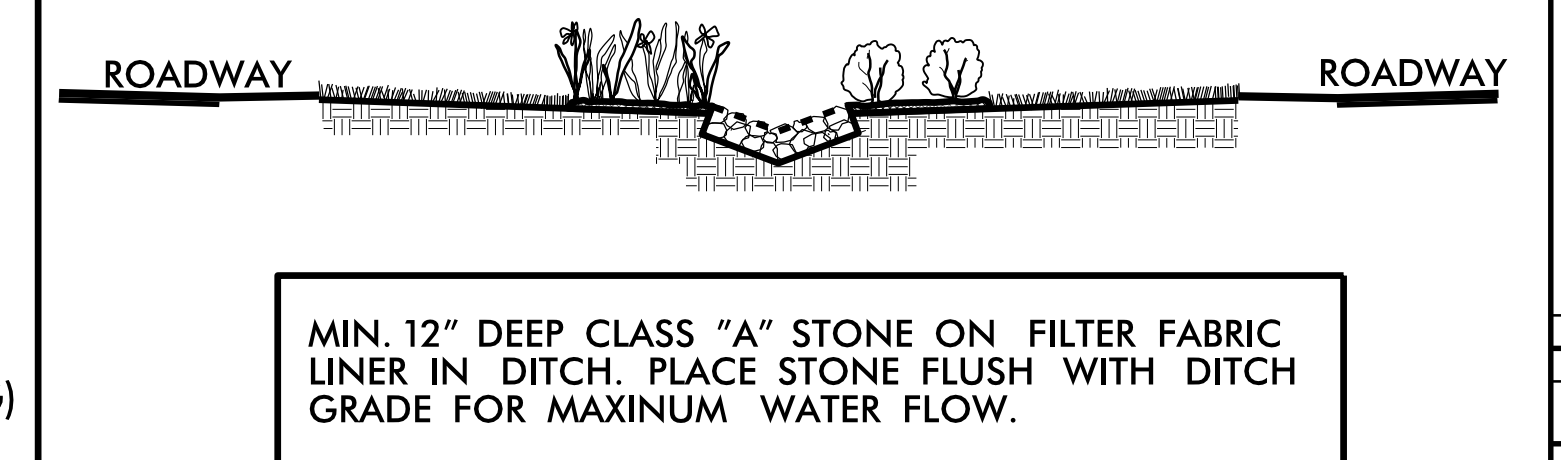


GUARDRAIL MULCHING DETAIL



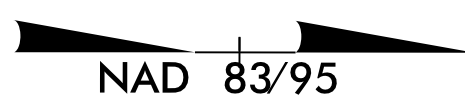
BOULDER PLACEMENT DETAIL
TYPICAL

SCALE: NTS

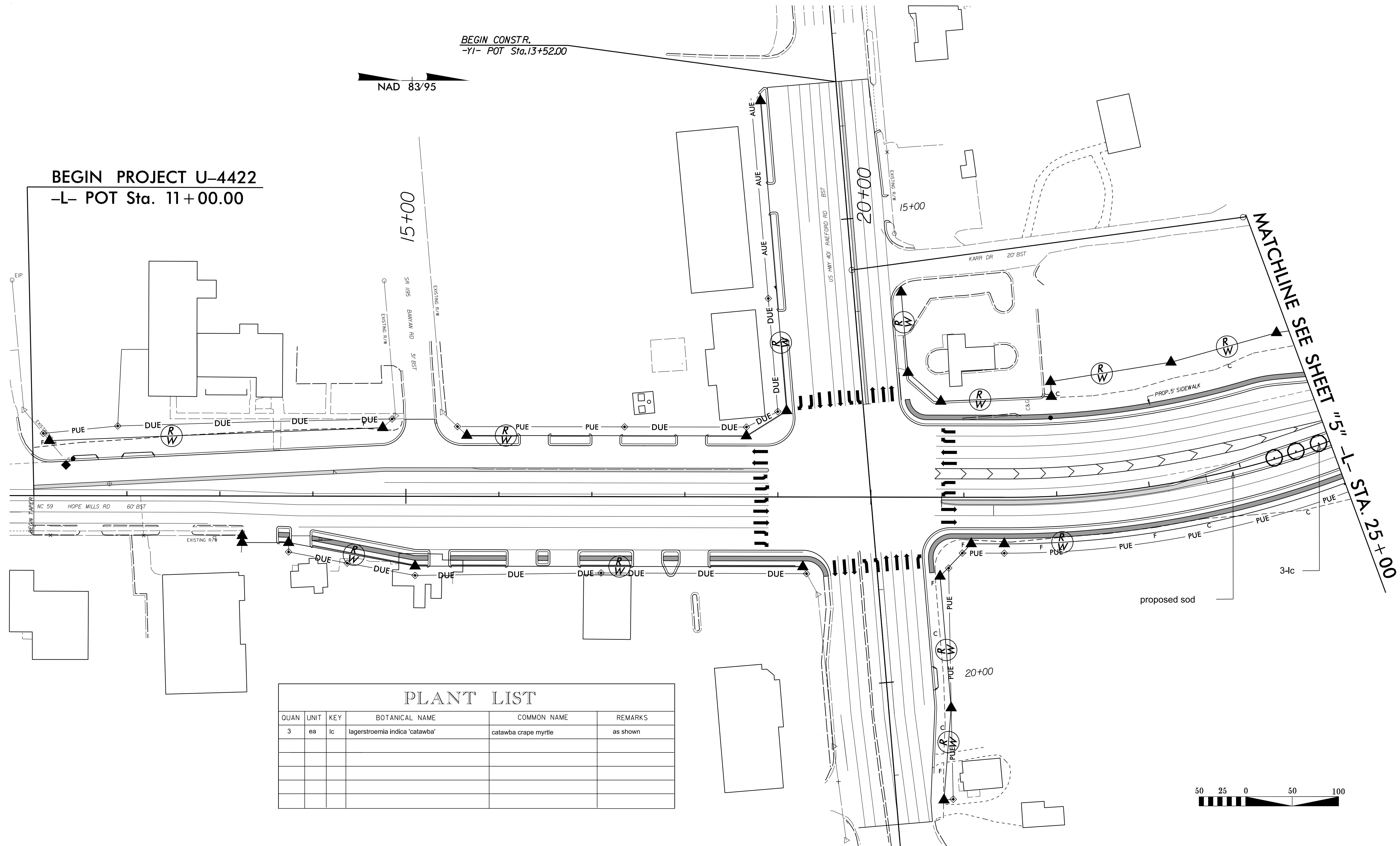


CLASS "A" STONE DITCH LINING DETAIL

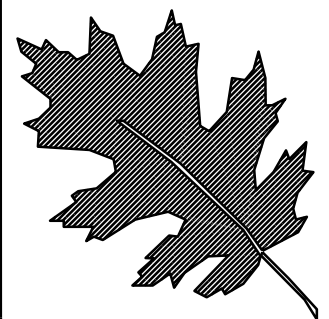
BEGIN CONSTR.
-YI- POT Sta.13+52.00



BEGIN PROJECT U-4422
-L- POT Sta. 11+00.00



PLANT LIST					
QUAN	UNIT	KEY	BOTANICAL NAME	COMMON NAME	REMARKS
3	ea	lc	lagerstroemia indica 'catawba'	catawba crape myrtle	as shown



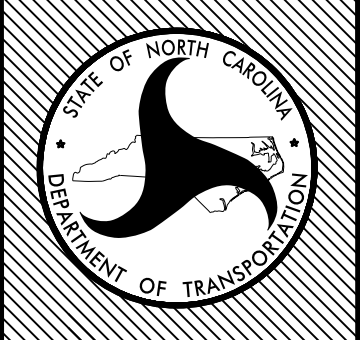
NCDOT - ROADSIDE ENVIRONMENTAL UNIT
LANDSCAPE DESIGN & DEVELOPMENT
 1557 MAIL SERVICE CENTER, RALEIGH, NC 27699-1557
 PH: 919-707-2920 FAX: 919-715-2554
http://www.ncdot.org/doh/operations/dp_chief_eng/roadside/

Glensford Drive (SR 1596)
Fayetteville NC
 project #: 35024.3.3

reu engineer
B. Minter Sr.

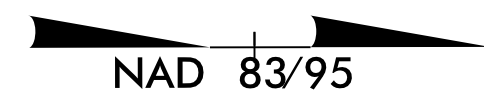
sheet description:
 landscape planting
 planting plan

prel design date: april 2013
 checked by & date:
 final design date: oct. 2013



sheet no:
L-4
 total sheet no:
 16

BEGIN CONSTRUCTION
-Y2- POT STA. 10+80.00



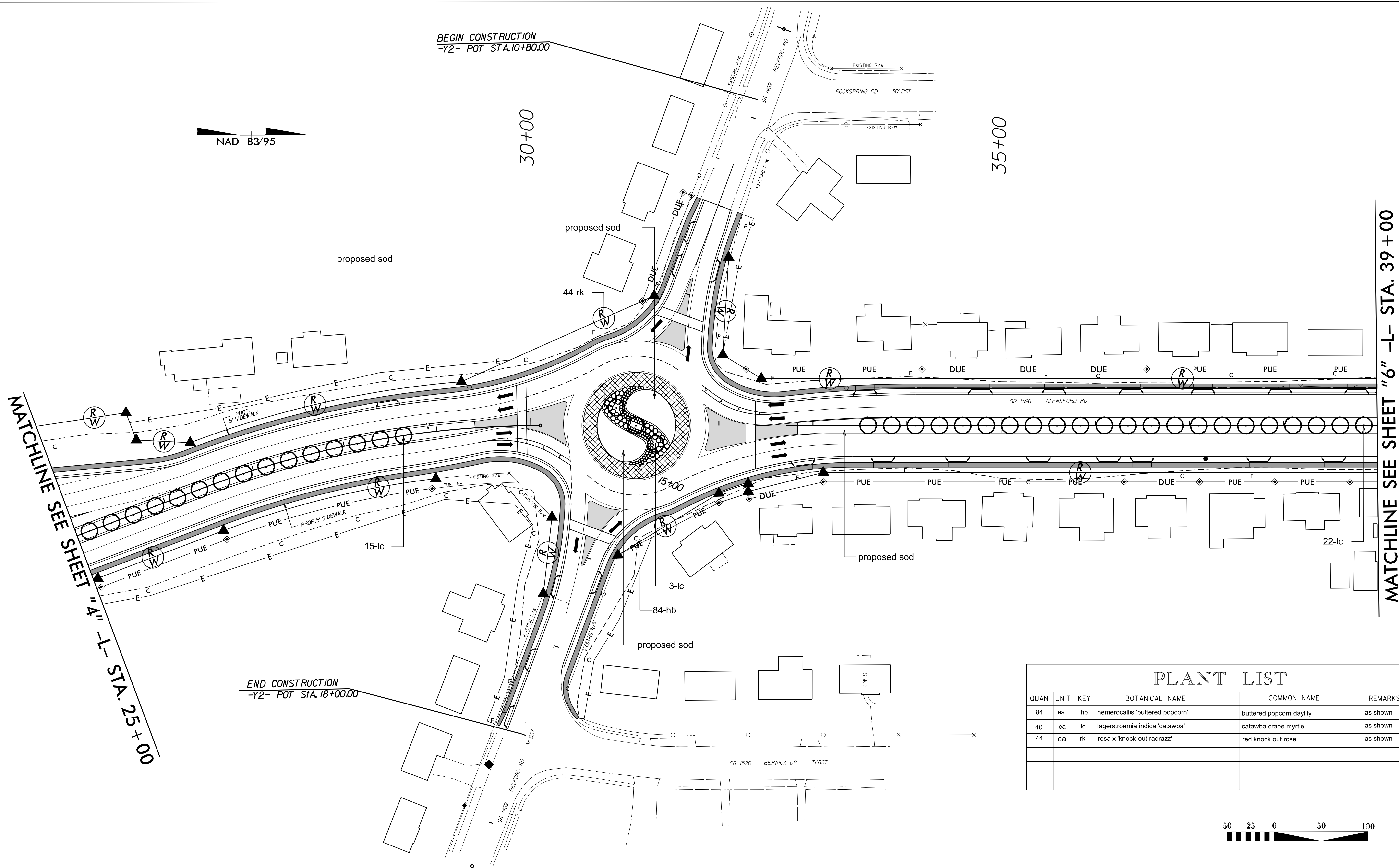
30+00

35+00

MATCHLINE SEE SHEET "A" -L- STA. 25+00

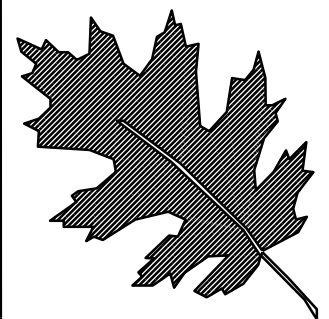
MATCHLINE SEE SHEET "6" -L- STA. 39+00

END CONSTRUCTION
-Y2- POT STA. 18+00.00



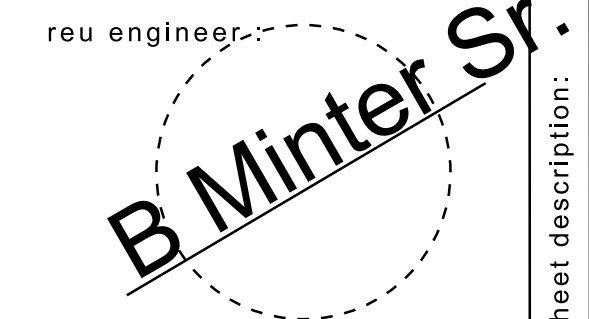
PLANT LIST

QUAN	UNIT	KEY	BOTANICAL NAME	COMMON NAME	REMARKS
84	ea	hb	hemerocallis 'buttered popcorn'	buttered popcorn daylily	as shown
40	ea	lc	lagerstroemia indica 'catawba'	catawba crape myrtle	as shown
44	ea	rk	rosa x 'knock-out radrazz'	red knock out rose	as shown



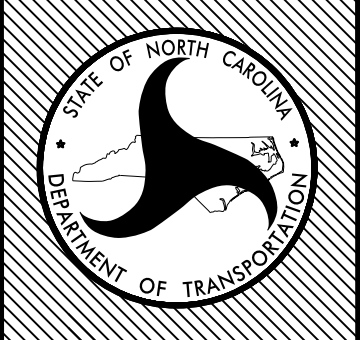
NCDOT - ROADSIDE ENVIRONMENTAL UNIT
LANDSCAPE DESIGN & DEVELOPMENT
 1557 MAIL SERVICE CENTER, RALEIGH, NC 27699-1557
 PH: 919-707-2920 FAX: 919-715-2554
http://www.ncdot.org/doh/operations/dp_chief_eng/roadside/

Glensford Drive (SR 1596)
Fayetteville NC
 project #: 35024.3.3



sheet description:
 landscape planting
 planting plan

prel design date: april 2013
 checked by & date:
 final design date: oct. 2013



sheet no:
L-5
 total sheet no: 16

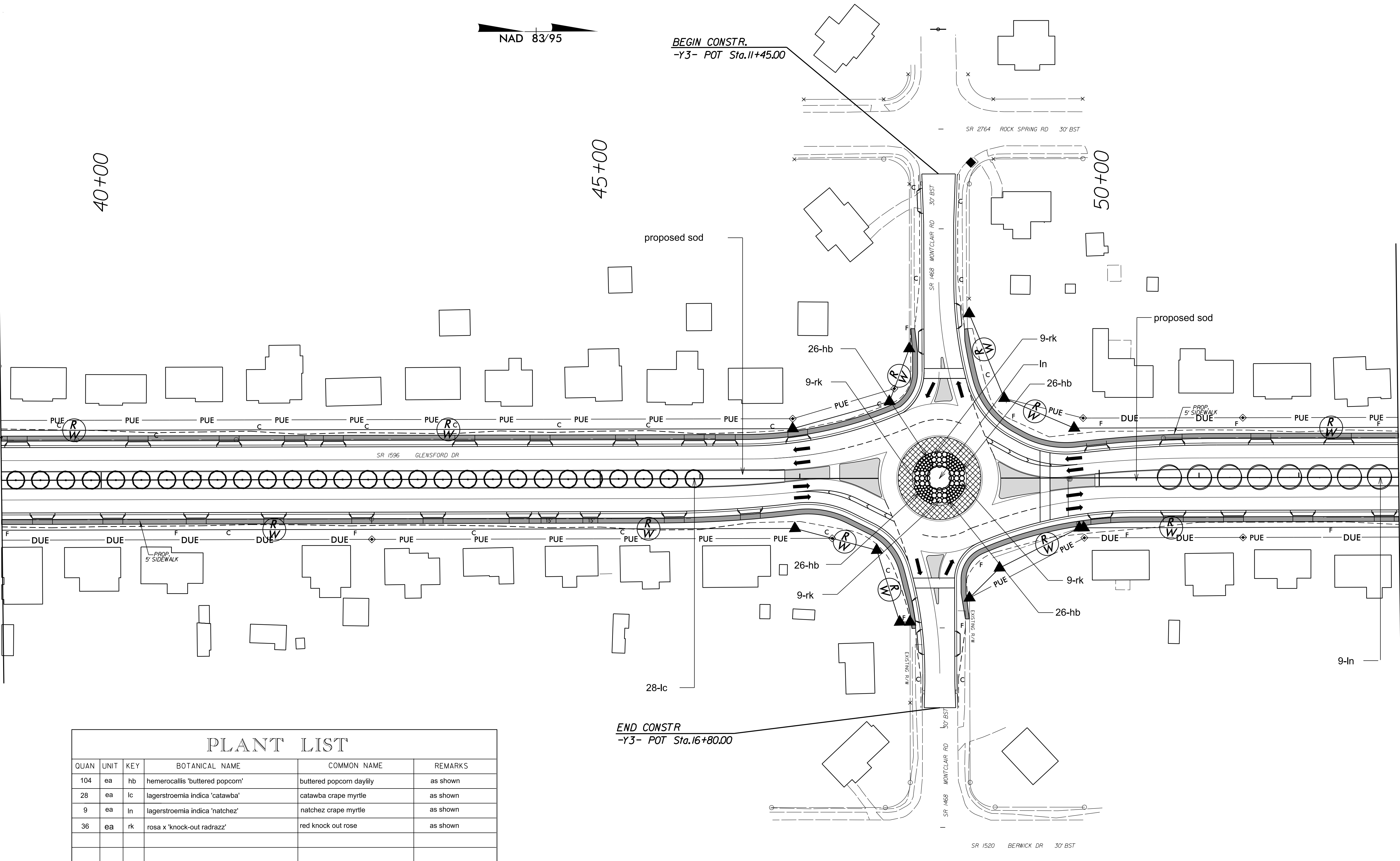
NAD 83/95

BEGIN CONSTR.
-Y3- POT Sta.11+45.00

END CONSTR.
-Y3- POT Sta.16+80.00

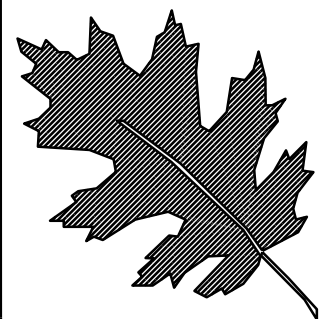
MATCHLINE SEE SHEET "5" -L- STA. 39+00

MATCHLINE SEE SHEET "7" -L- STA. 53+00



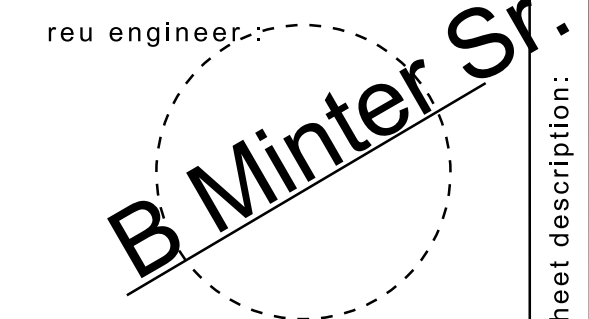
PLANT LIST

QUAN	UNIT	KEY	BOTANICAL NAME	COMMON NAME	REMARKS
104	ea	hb	hemerocallis 'buttered popcorn'	buttered popcorn daylily	as shown
28	ea	lc	lagerstroemia indica 'catawba'	catawba crape myrtle	as shown
9	ea	ln	lagerstroemia indica 'natchez'	natchez crape myrtle	as shown
36	ea	rk	rosa x 'knock-out radrazz'	red knock out rose	as shown



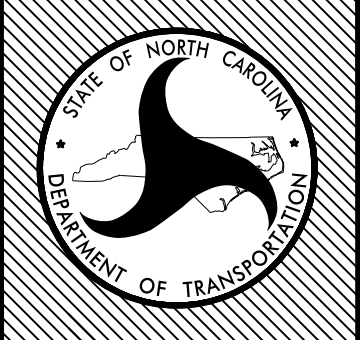
NCDOT - ROADSIDE ENVIRONMENTAL UNIT
LANDSCAPE DESIGN & DEVELOPMENT
 1557 MAIL SERVICE CENTER, RALEIGH, NC 27699-1557
 PH: 919-707-2920 FAX: 919-715-2554
http://www.ncdot.org/doh/operations/dp_chief_eng/roadside/

Glensford Drive (SR 1596)
Fayetteville NC
 project #: 35024.3.3

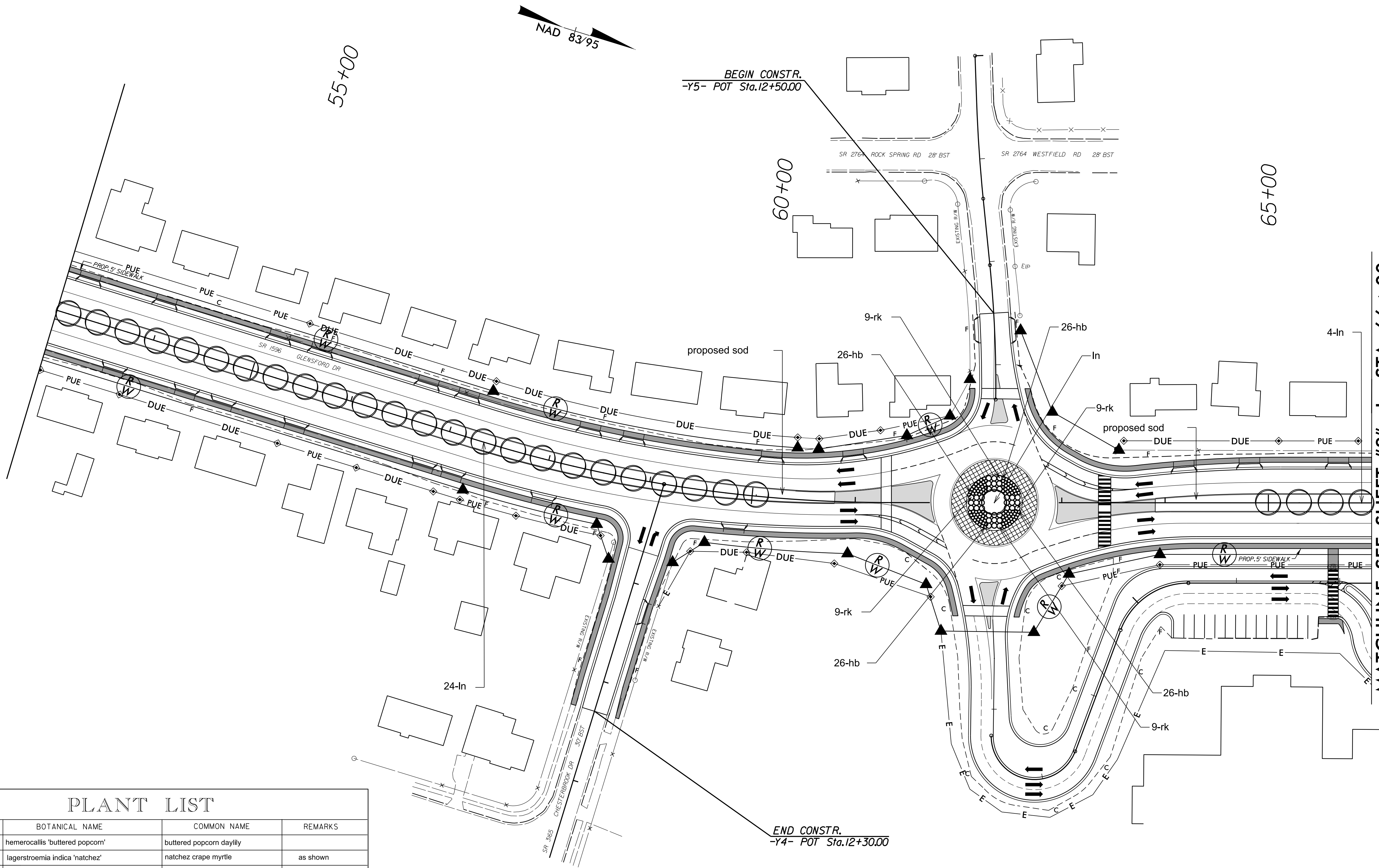
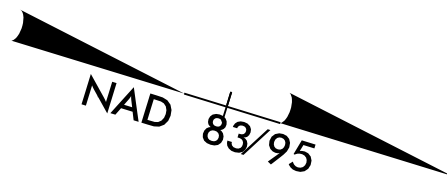


sheet description:
 landscape planting
 planting plan

prel design date: april 2013
 checked by & date:
 final design date: oct. 2013



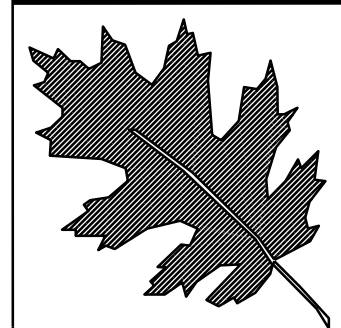
sheet no:
L-6
 total sheet no:
 16



MATCHLINE SEE SHEET "8" -L- STA. 66+00

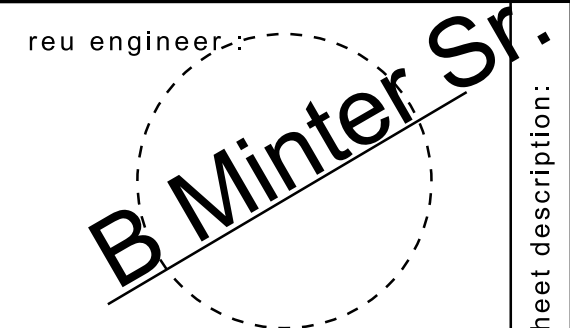
PLANT LIST

QUAN	UNIT	KEY	BOTANICAL NAME	COMMON NAME	REMARKS
104	ea	hb	hemerocallis 'battered popcorn'	battered popcorn daylily	
29	ea	ln	lagerstroemia indica 'natchez'	natchez crape myrtle	as shown
36	ea	rk	rosa x 'knock-out radrazz'	red knock out rose	as shown
					as shown



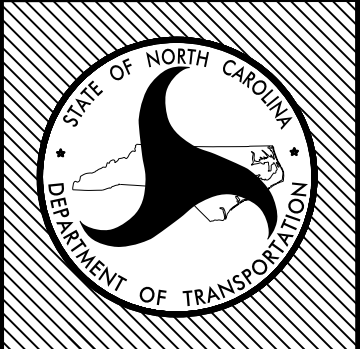
NCDOT - ROADSIDE ENVIRONMENTAL UNIT
LANDSCAPE DESIGN & DEVELOPMENT
 1557 MAIL SERVICE CENTER, RALEIGH, NC 27699-1557
 PH: 919-707-2920 FAX: 919-715-2554
http://www.ncdot.org/doh/operations/dp_chief_eng/roadside/

Glensford Drive (SR 1596)
Fayetteville NC
 project #: 35024.3.3

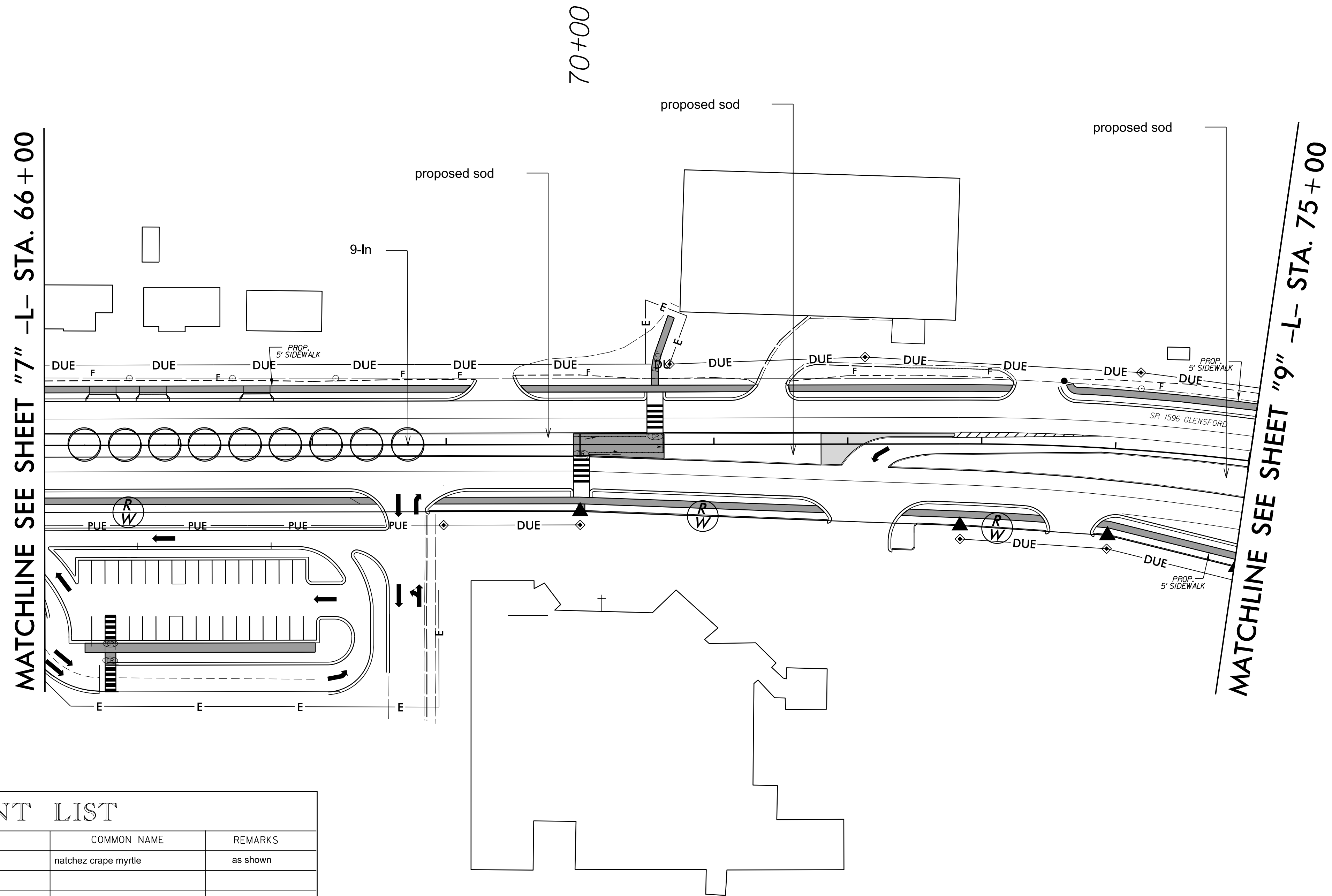
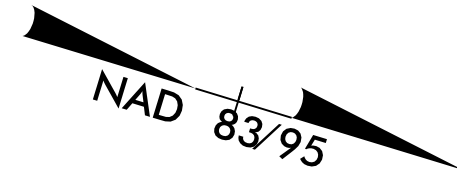


sheet description:
 landscape planting
 planting plan

prel design date: april 2013
 checked by & date:
 final design date: oct. 2013



sheet no :
L-7
 total sheet no :
 16

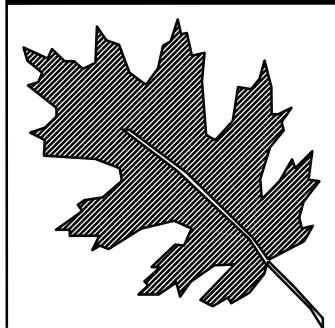


MATCHLINE SEE SHEET "7" -L- STA. 66+00

MATCHLINE SEE SHEET "9" -L- STA. 75+00

PLANT LIST

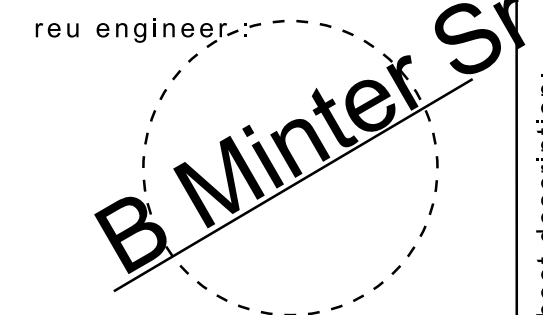
QUAN	UNIT	KEY	BOTANICAL NAME	COMMON NAME	REMARKS
9	ea	In	lagerstroemia indica 'natchez'	natchez crape myrtle	as shown



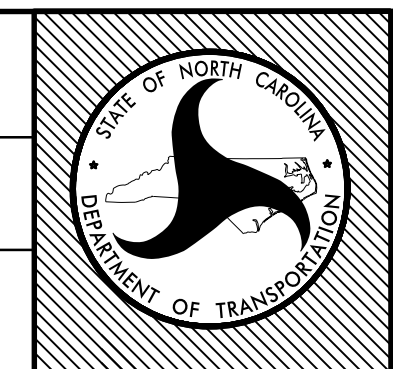
NCDOT - ROADSIDE ENVIRONMENTAL UNIT
 LANDSCAPE DESIGN & DEVELOPMENT
 1557 MAIL SERVICE CENTER, RALEIGH, NC 27699-1557
 PH: 919-707-2920 FAX: 919-715-2554
http://www.ncdot.org/doh/operations/dp_chief_eng/roadside/

Glensford Drive (SR 1596)
 Fayetteville NC

project #: 35024.3.3

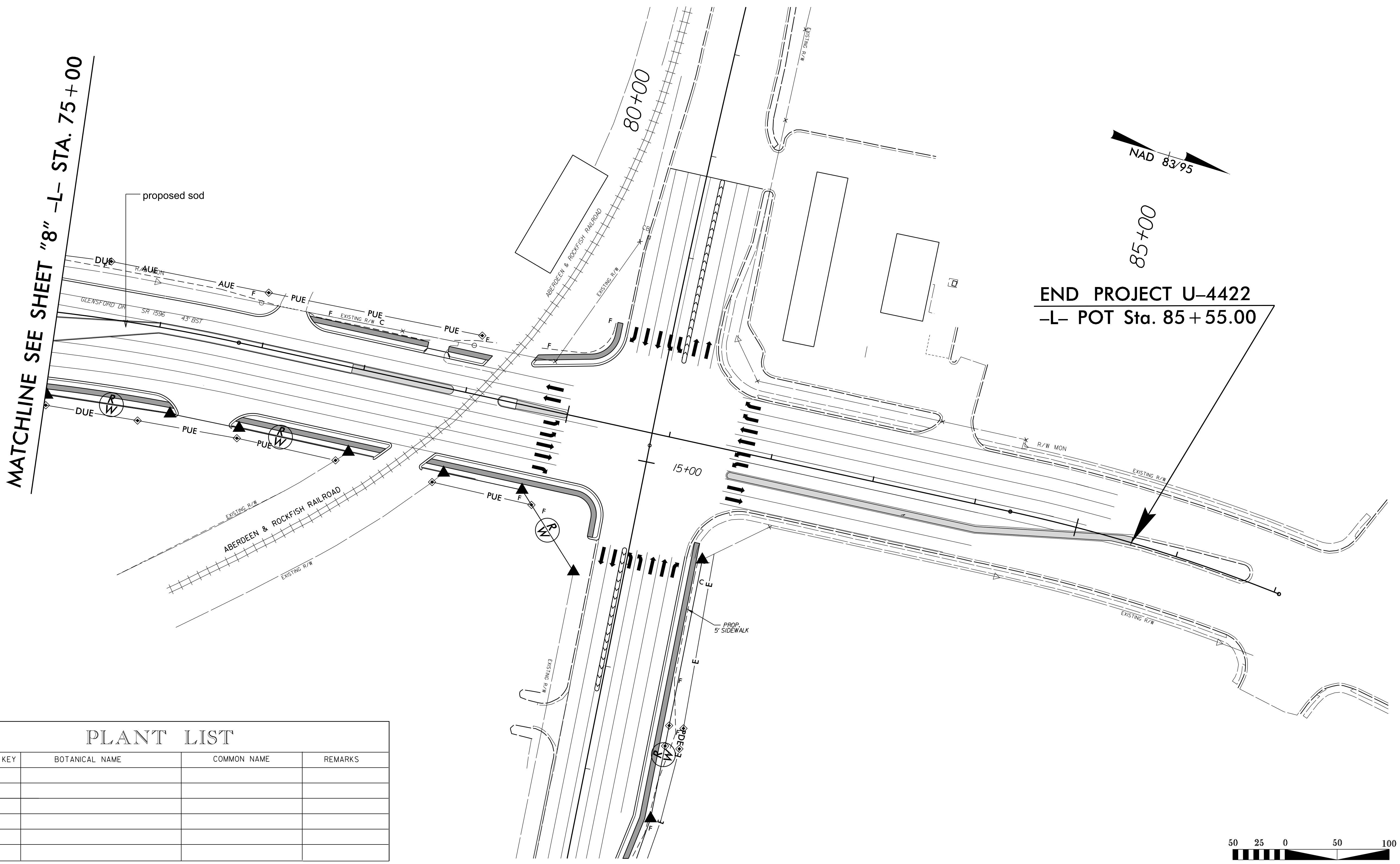


sheet description:	landscape planting	prel design date: april 2013
	planting plan	checked by & date:
		final design date: oct. 2013



sheet no : **L-8**
 total sheet no : 16

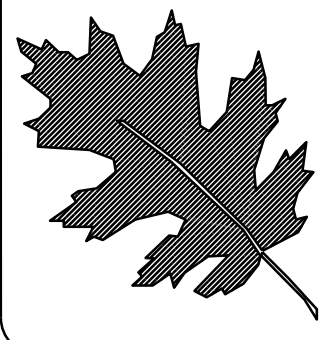
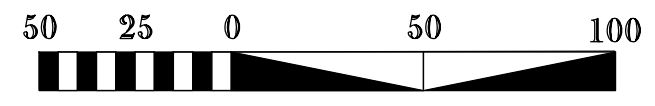
MATCHLINE SEE SHEET "8" -L- STA. 75+00



END PROJECT U-4422
-L- POT Sta. 85+55.00

PLANT LIST

QUAN	UNIT	KEY	BOTANICAL NAME	COMMON NAME	REMARKS



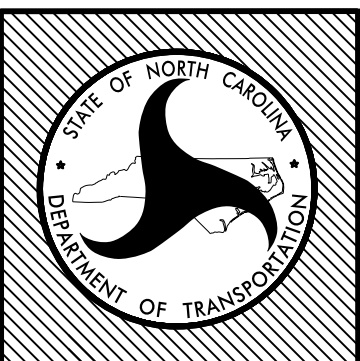
NCDOT - ROADSIDE ENVIRONMENTAL UNIT
LANDSCAPE DESIGN & DEVELOPMENT
 1557 MAIL SERVICE CENTER, RALEIGH, NC 27699-1557
 PH: 919-707-2920 FAX: 919-715-2554
http://www.ncdot.org/doh/operations/dp_chief_eng/roadside/

Glensford Drive (SR 1596)
Fayetteville NC
 project #: 35024.3.3

re: engineer
B. Minter Sr.

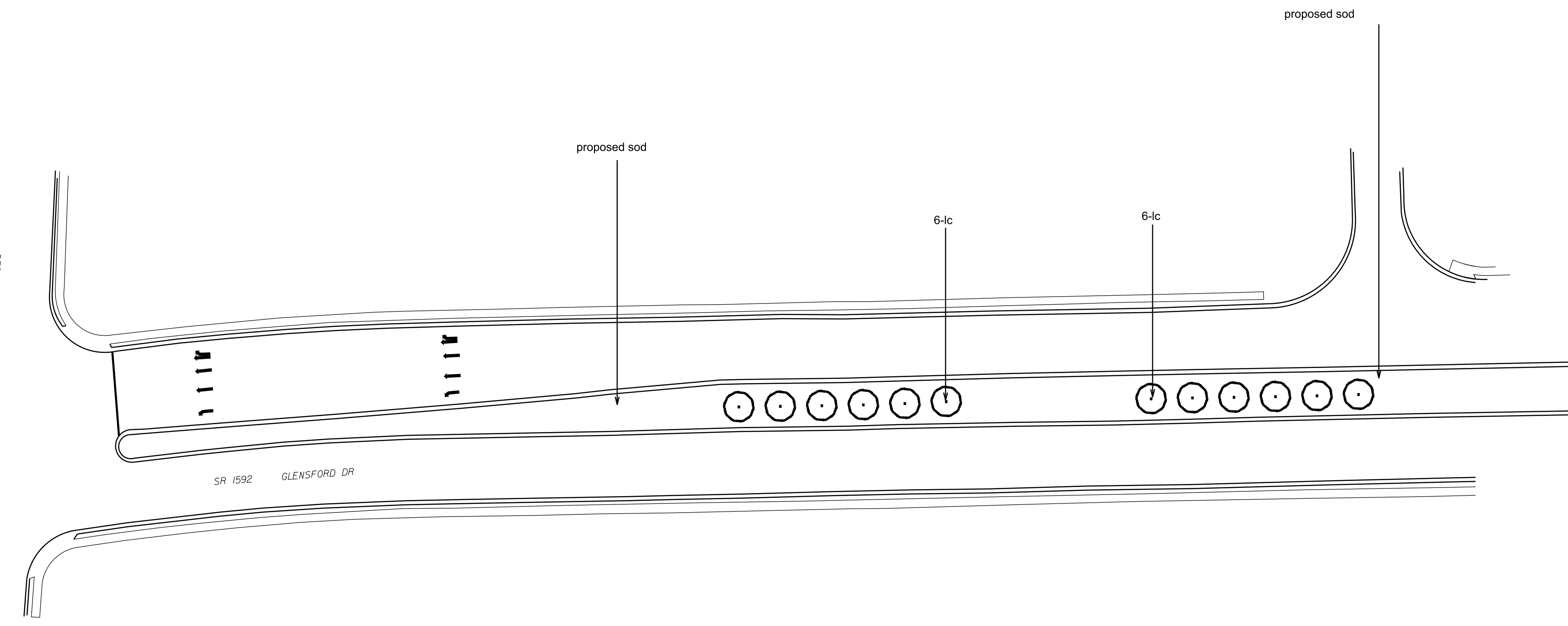
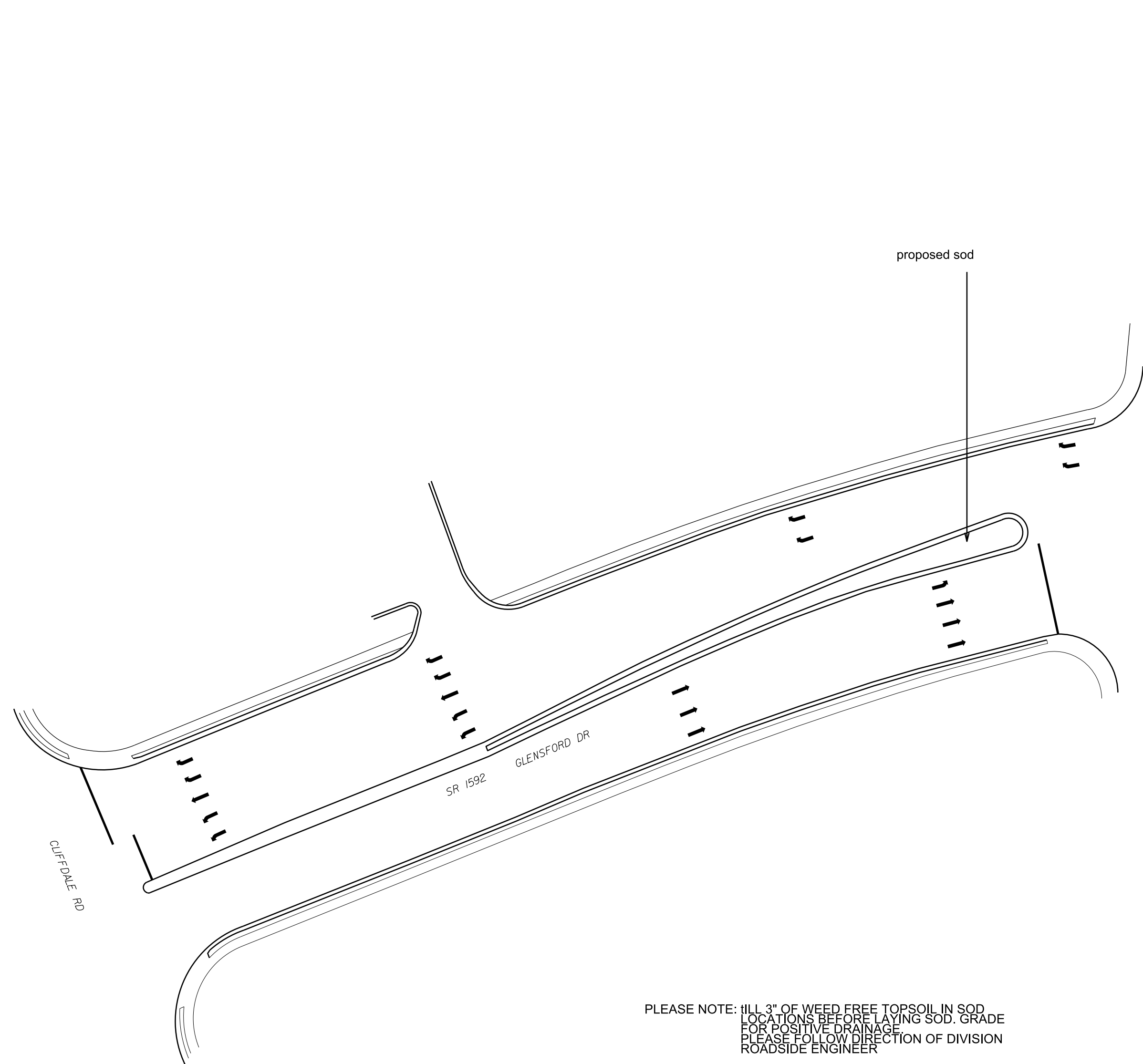
sheet description:	landscape planting
	planting plan

prel design date:	april 2013
checked by & date:	
final design date:	oct. 2013



sheet no :
L-9
 total sheet no :
 16

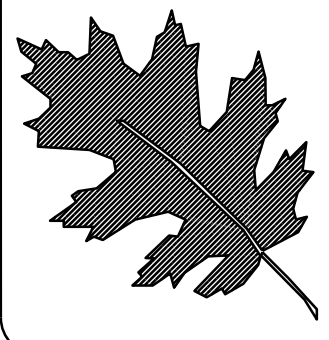
NAD 83/95



PLEASE NOTE: FILL 3" OF WEED FREE TOPSOIL IN SOD LOCATIONS BEFORE LAYING SOD. GRADE FOR POSITIVE DRAINAGE. PLEASE FOLLOW DIRECTION OF DIVISION ROADSIDE ENGINEER

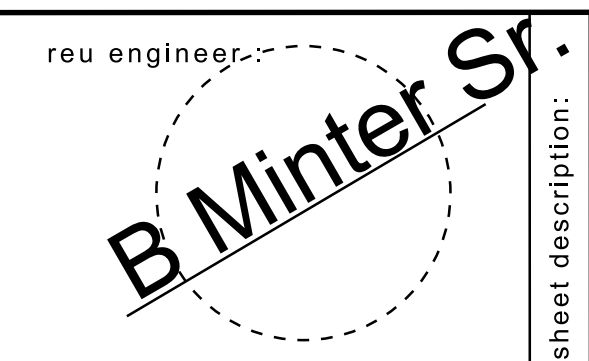
PLANT LIST

QUAN	UNIT	KEY	BOTANICAL NAME	COMMON NAME	REMARKS
12	ea	lc	lagerstroemia indica 'catawba'	catawba crape myrtle	as shown



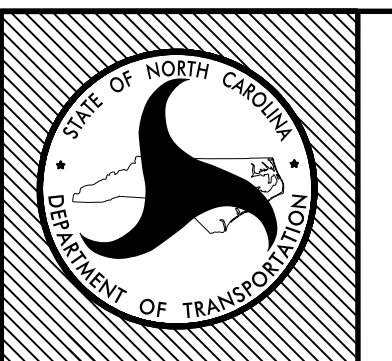
NCDOT - ROADSIDE ENVIRONMENTAL UNIT
 LANDSCAPE DESIGN & DEVELOPMENT
 1557 MAIL SERVICE CENTER, RALEIGH, NC 27699-1557
 PH: 919-707-2920 FAX: 919-715-2554
http://www.ncdot.org/doh/operations/dp_chief_eng/roadside/

Glensford Drive (SR 1596)
 Fayetteville NC
 project #: 35024.3.3

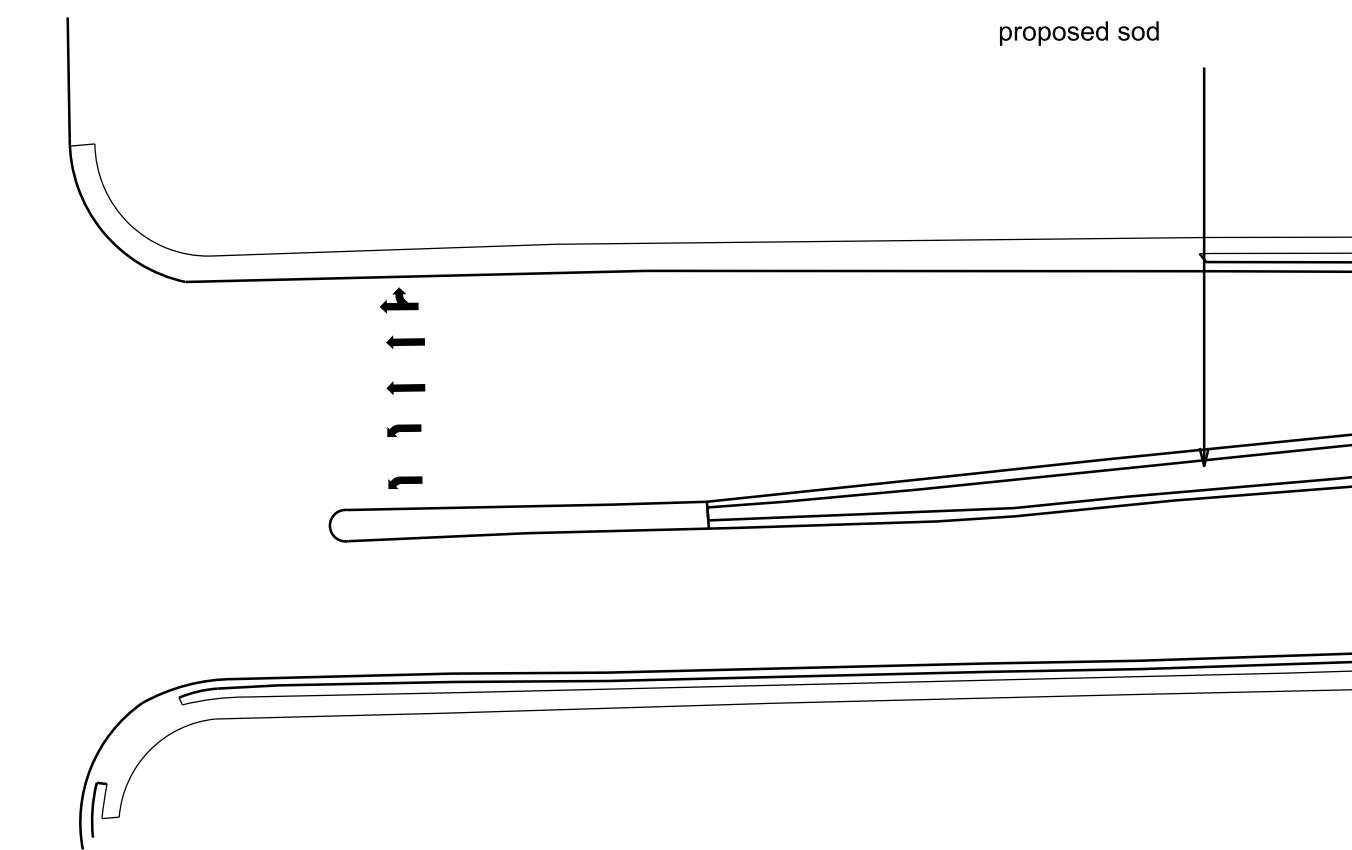
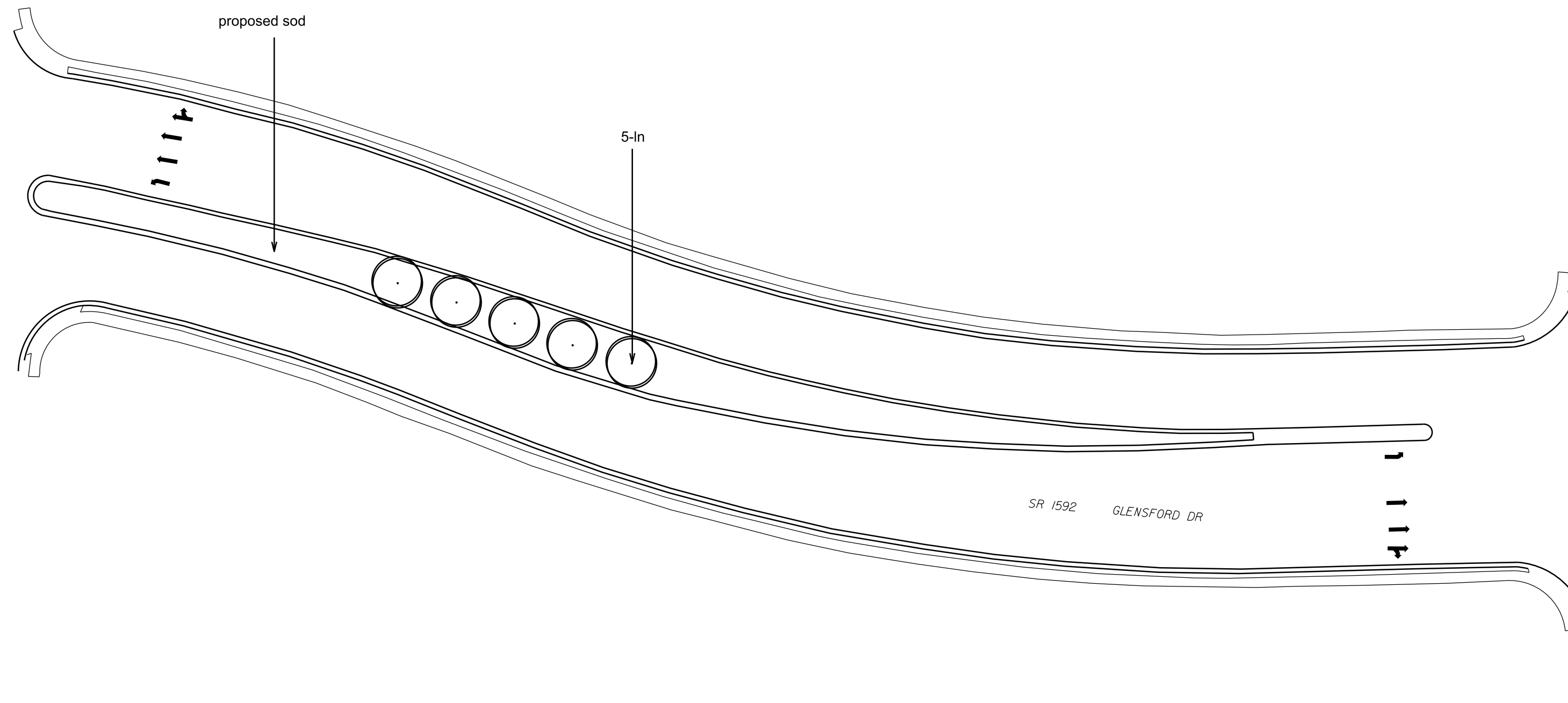
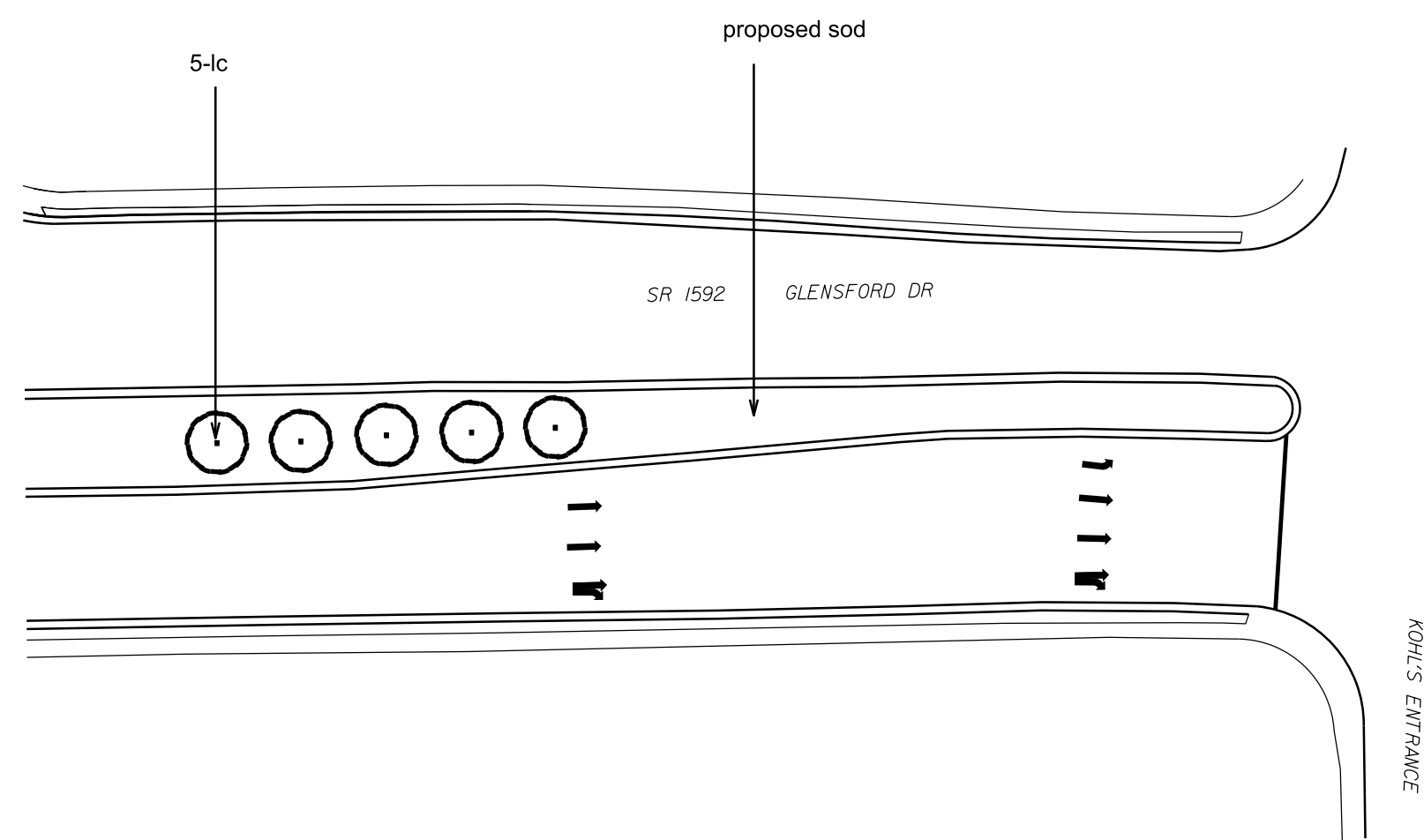
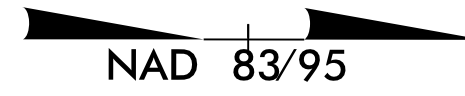


sheet description:
 landscape planting
 planting plan

prel design date: april 2013
 checked by & date :
 final design date : MAY 2015

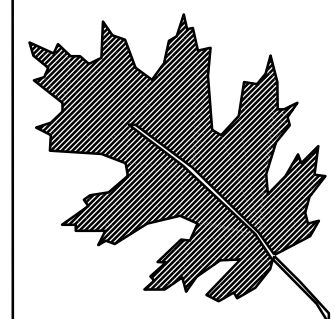


sheet no :
L-17
 total sheet no :
 22



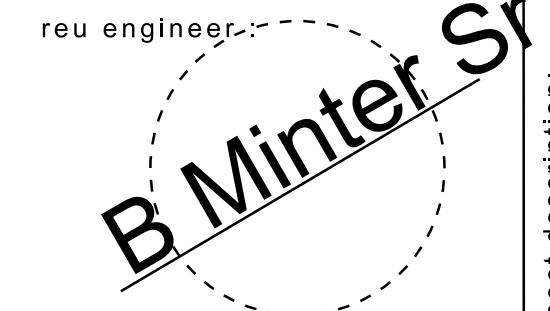
PLANT LIST					
QUAN	UNIT	KEY	BOTANICAL NAME	COMMON NAME	REMARKS
5	ea	lc	lagerstroemia indica 'catawba'	catawba crape myrtle	as shown
5	ea	ln	lagerstroemia indica 'natchez'	natchez crape myrtle	as shown

PLEASE NOTE: FILL 3" OF WEED FREE TOPSOIL IN SOD LOCATIONS BEFORE LAYING SOD. GRADE FOR POSITIVE DRAINAGE. PLEASE FOLLOW DIRECTION OF DIVISION ROADSIDE ENGINEER



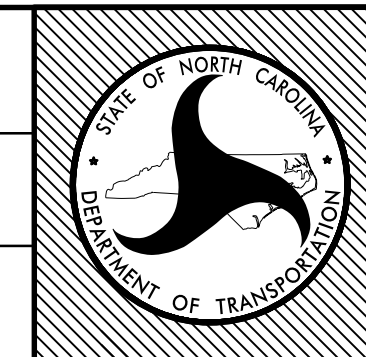
NCDOT - ROADSIDE ENVIRONMENTAL UNIT
 LANDSCAPE DESIGN & DEVELOPMENT
 1557 MAIL SERVICE CENTER, RALEIGH, NC 27699-1557
 PH: 919-707-2920 FAX: 919-715-2554
http://www.ncdot.org/doh/operations/dp_chief_eng/roadside/

Glensford Drive (SR 1596)
 Fayetteville NC
 project #: 35024.3.3

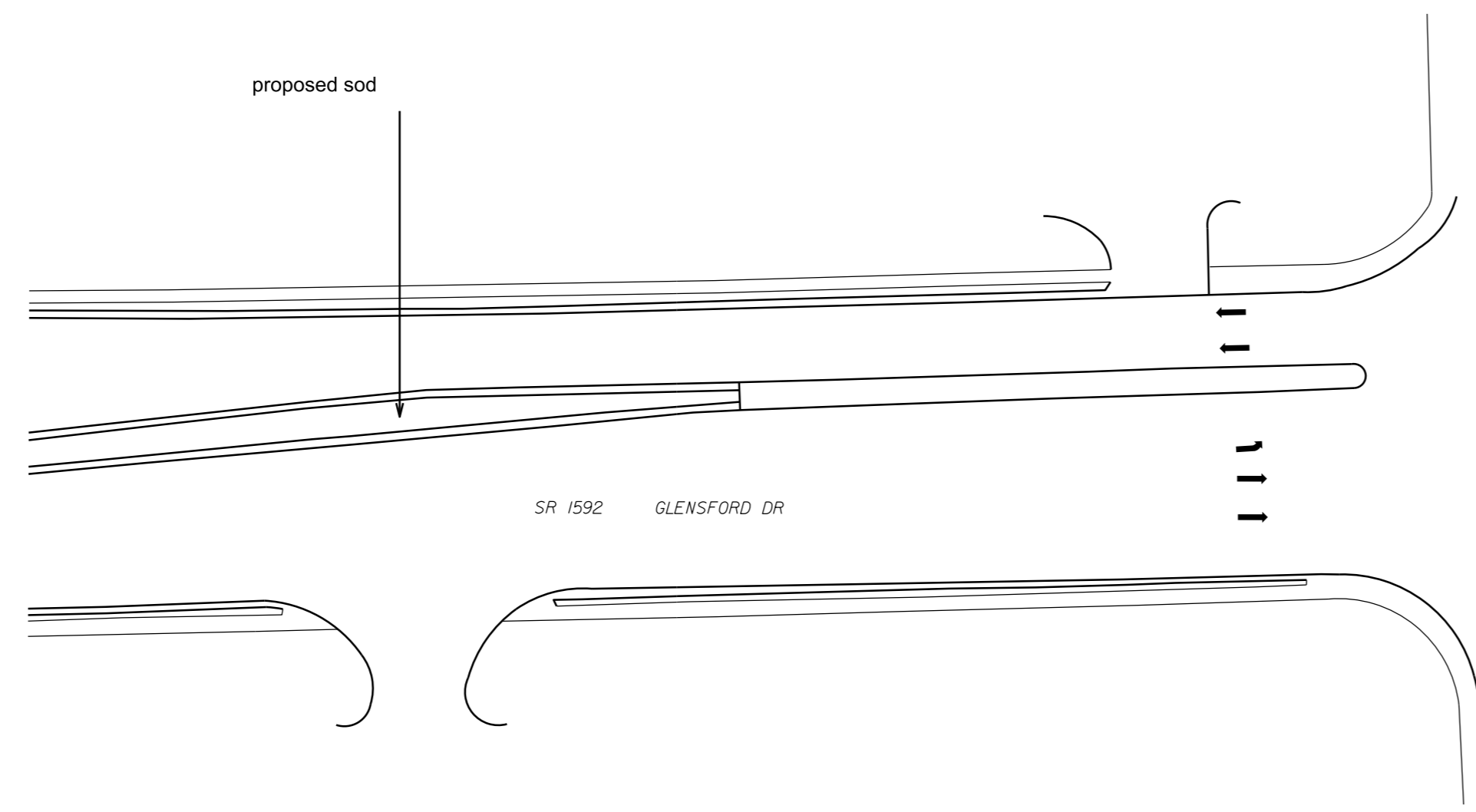
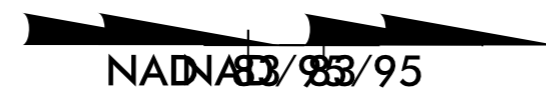


sheet description:	landscape planting
	planting plan

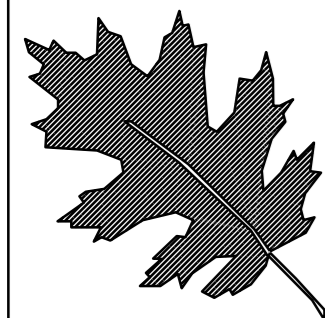
prel design date:	april 2013
checked by & date:	
final design date:	MAY 2015



sheet no :
L-18
 total sheet no :
 22

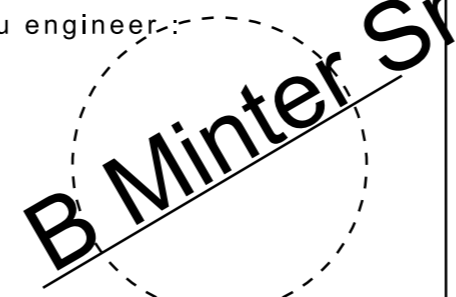


PLEASE NOTE: 1/4" = 1' SCALE
 1. ALL 3" OF WEED FREE TOPSOIL IN SOD
 LOCATIONS BEFORE LAYING SOD. GRADE
 FOR POSITIVE DRAINAGE
 PLEASE FOLLOW DIRECTION OF DIVISION
 ROADSIDE ENGINEER



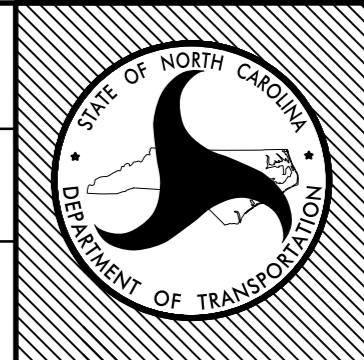
NCDOT - ROADSIDE ENVIRONMENTAL UNIT
 LANDSCAPE DESIGN & DEVELOPMENT
 1557 MAIL SERVICE CENTER, RALEIGH, NC 27699-1557
 PH: 919-707-2920 FAX: 919-715-2554
http://www.ncdot.org/doh/operations/dp_chief_eng/roadside/

Glensford Drive (SR 1596)
 Fayetteville NC
 project #: 35024.3.3

reu engineer:


sheet description:	landscape planting
	planting plan

prel design date:	april 2013
checked by & date :	
final design date :	MAY 2015



sheet no :
L-19
 total sheet no :
 22