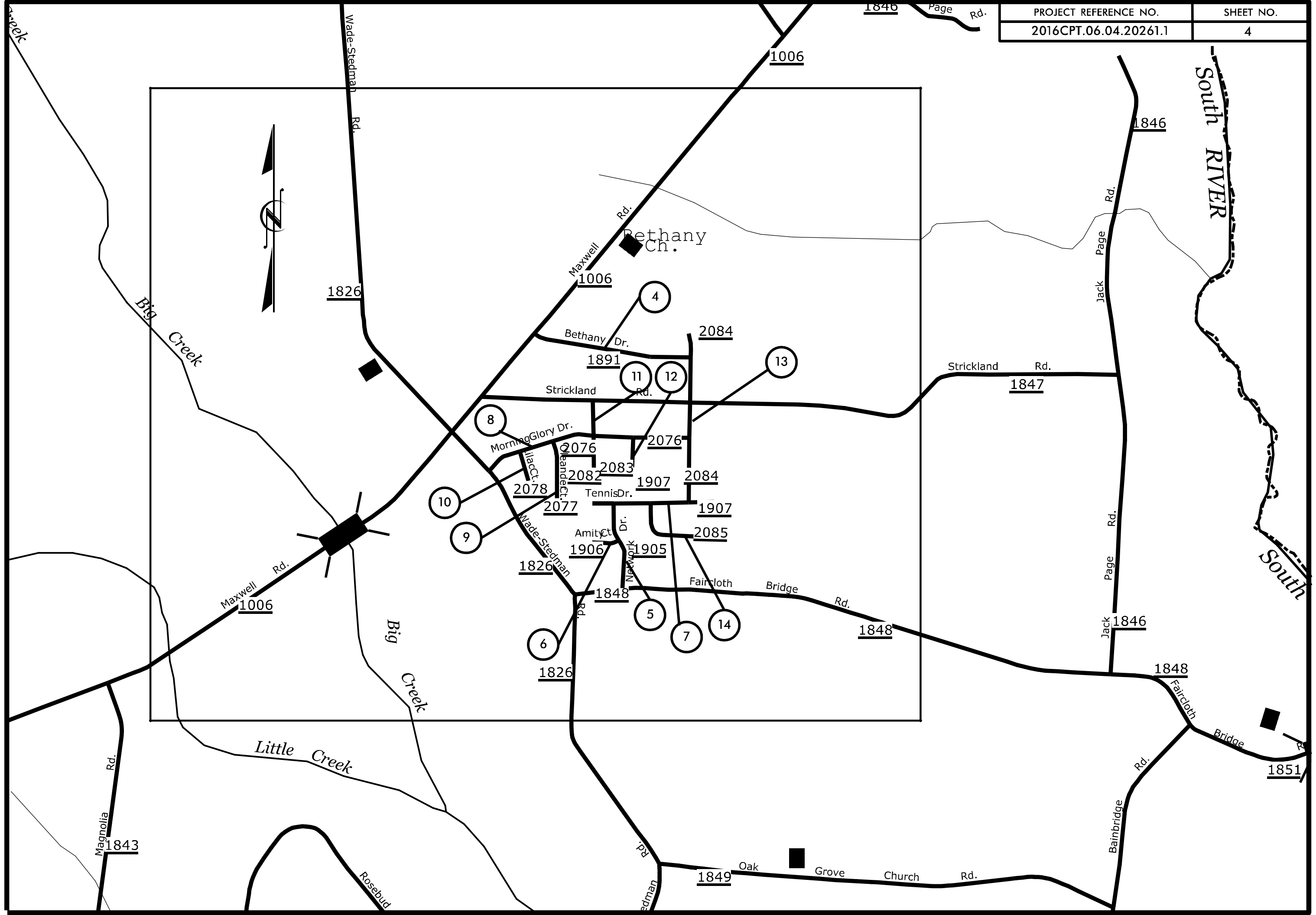
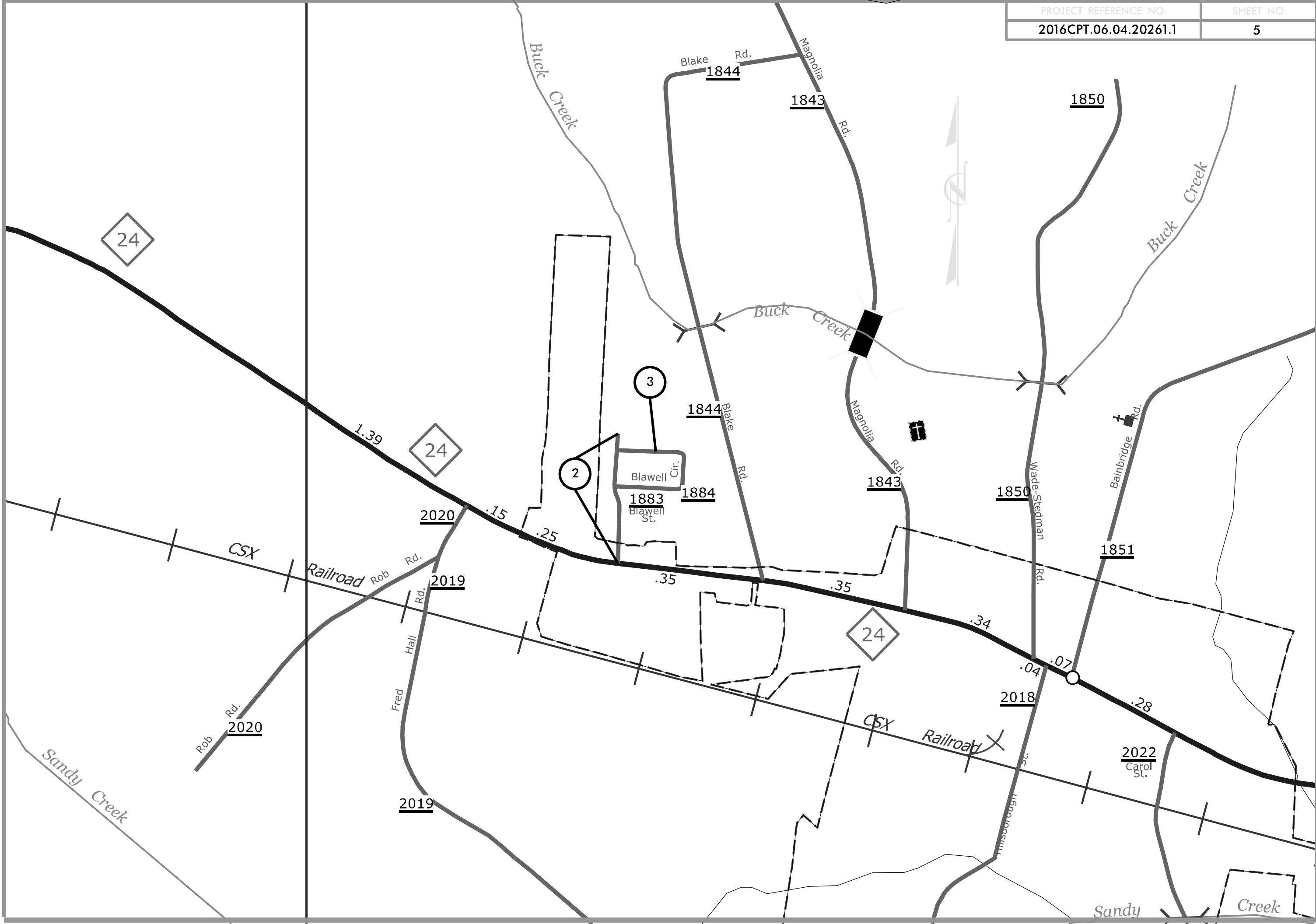


over





PROJECT NO.	SHEET NO.	TOTAL NO.
2016CPT.06.04.20261.1		

SUMMARY OF QUANTITIES

															4399000000-N	4413000000-E		
PROJECT NO	COUNTY	MAP NO	ROUTE	DESCRIPTION	TYP NO	LANES	LANE TYPE	FINAL SURFACE TESTING REQUIRED	WARM MIX ASPHALT REQUIRED	LENGTH MI	WIDTH FT	SURFACE COURSE, S4.75A TONS	ASPHALT BINDER FOR PLANT MIX TONS	PATCHING EXISTING PAVEMENT TONS	ADJ. OF MANHOLES EA	ADJ. OF METER OR VALVE BOX EA	TEMPORARY TRAFFIC CONTROL LS	WORK ZONE ADVANCE/ GENERAL WARNING SIGNING SF
2016CPT.06.04.20261.1	Cumberland	1	SR 1733	FROM: SR 1728 MP 0.0 TO: SR 1736 MP 0.24	2	2	2WU	NO	NO	0.24	26	137	10				1	839
TOTAL FOR MAP NO. 1										0.24		137	10				1	839
2016CPT.06.04.20261.1	Cumberland	2	SR 1883	FROM: NC HWY 24 MP 0.0 TO: END STATE MAINTENANCE MP 0.31	2	2	2WU	NO	NO	0.31	25	171	12	3	2	1		
TOTAL FOR MAP NO. 2										0.31		171	12	3	2	1		
2016CPT.06.04.20261.1	Cumberland	3	SR 1884	FROM: SR 1883 MP 0.0 TO: SR 1883 MP 0.38	2	2	2WU	NO	NO	0.38	25	209	15	3	1			
TOTAL FOR MAP NO. 3										0.38		209	15	3	1			
2016CPT.06.04.20261.1	Cumberland	4	SR 1891	FROM:SR 2084 MP 0.0 TO: MP 0.28	2	2	2WU	NO	NO	0.28	26	160	11	15				
		"	"	FROM: MP0.28 TO SR 1006 MP 0.38	1	2	2WU	NO	NO	0.1	20	44	3	4				
TOTAL FOR MAP NO. 4										0.38		204	14	19				
2016CPT.06.04.20261.1	Cumberland	5	SR 1905	FROM: SR 1907 MP 0.0 TO: SR 1848 MP 0.21	1	2	2WU	NO	NO	0.21	20	92	6	3				
TOTAL FOR MAP NO. 5										0.21		92	6	3				
2016CPT.06.04.20261.1	Cumberland	6	SR 1906	FROM: SR 1905 MP 0.0 TO: CUL DE SAC MP 0.07	1	2	2WU	NO	NO	0.07	18	28	2	20				
TOTAL FOR MAP NO. 6										0.07		28	2	20				
2016CPT.06.04.20261.1	Cumberland	7	SR 1907	FROM: DEAD END MP 0.0 TO: DEAD END MP 0.31	1	2	2WU	NO	NO	0.31	20	136	10	6				
TOTAL FOR MAP NO. 7										0.31		136	10	6				
2016CPT.06.04.20261.1	Cumberland	8	SR 2076	FROM: SR 1826 MP 0.0 TO: SR 2084 MP 0.51	1	2	2WU	NO	NO	0.51	20	224	16	4				
TOTAL FOR MAP NO. 8										0.51		224	16	4				
2016CPT.06.04.20261.1	Cumberland	9	SR 2077	FROM: SR 2076 MP 0.0 TO: DEAD END MP 0.18	1	2	2WU	NO	NO	0.18	20	79	6					
TOTAL FOR MAP NO. 9										0.18		79	6					
2016CPT.06.04.20261.1	Cumberland	10	SR 2078	FROM: SR 2076 MP 0.0 TO: DEAD END MP 0.10	1	2	2WU	NO	NO	0.1	20	44	3	2				
TOTAL FOR MAP NO. 10										0.1		44	3	2				
2016CPT.06.04.20261.1	Cumberland	11	SR 2082	FROM: SR 1847 MP 0.0 TO: DEAD END MP 0.19	1	2	2WU	NO	NO	0.19	20	84	6	2				
TOTAL FOR MAP NO. 11										0.19		84	6	2				
2016CPT.06.04.20261.1	Cumberland	12	SR 2083	FROM: SR 2076 MP 0.0 TO: CUL DE SAC MP 0.08	1	2	2WU	NO	NO	0.08	20	35	2	7				
TOTAL FOR MAP NO. 12										0.08		35	2	7				

PROJECT NO	COUNTY	MAP NO	ROUTE	DESCRIPTION	TYP NO	LANES	LANE TYPE	FINAL SURFACE TESTING REQUIRED	WARM MIX ASPHALT REQUIRED	LENGTH MI	WIDTH FT	SURFACE COURSE, S4.75A TONS	ASPHALT BINDER FOR PLANT MIX TONS	PATCHING EXISTING PAVEMENT TONS	ADJ. OF MANHOLES EA	ADJ. OF METER OR VALVE BOX EA	TEMPORARY TRAFFIC CONTROL LS	WORK ZONE ADVANCE/ GENERAL WARNING SIGNING SF
2016CPT.06.04.20261.1	Cumberland	13	SR 2084	FROM: SR 1907 MP 0.0 TO DEAD END MP 0.43	1	2	2WU	NO	NO	0.43	20	189	13	6				
TOTAL FOR MAP NO. 13										0.43		189	13	6				
2016CPT.06.04.20261.1	Cumberland	14	SR 2085	FROM: SR 1907 MP 0.0 TO: DEAD END MP 0.20	1	2	2WU	NO	NO	0.2	20	88	6	5				
TOTAL FOR MAP NO. 14										0.2		88	6	5				
2016CPT.06.04.20261.1	Cumberland	15	SR 2805	FROM: SR 1728 MP 0.0 TO DEAD END MP 0.18	1	2	2WU	NO	NO	0.18	24	95	7	10				
TOTAL FOR MAP NO. 15										0.18		95	7	10				
2016CPT.06.04.20261.1	Cumberland	16	SR 2809	FROM: SR 1728 MP 0.0 TO: DEAD END MP 0.29	2	2	2WU	NO	NO	0.29	24	153	11	9				
TOTAL FOR MAP NO. 16										0.29		153	11	9				
2016CPT.06.04.20261.1	Cumberland	17	SR 2814	FROM: HWY 301 MP 0.0 TO DEAD END MP 0.50	1	2	2WU	NO	NO	0.5	20	220	15	4				
TOTAL FOR MAP NO. 17										0.5		220	15	4				
2016CPT.06.04.20261.1	Cumberland	18	SR 2818	FROM: SR 1728 MP 0.0 TO: SR 2819 MP 0.20	1	2	2WU	NO	NO	0.2	23	101	7					
TOTAL FOR MAP NO. 18										0.2		101	7					
2016CPT.06.04.20261.1	Cumberland	19	SR 2819	FROM: DEAD END MP 0.0 TO: DEAD END MP 0.20	1	2	2WU	NO	NO	0.2	23	101	7	5				
TOTAL FOR MAP NO. 19										0.2		101	7	5				
2016CPT.06.04.20261.1	Cumberland	20	SR 2823	FROM: SR 1728 MP 0.0 TO: DEAD END MP 0.21	1	2	2WU	NO	NO	0.21	20	92	6					
TOTAL FOR MAP NO. 20										0.21		92	6					
2016CPT.06.04.20261.1	Cumberland	21	SR 2824	FROM: SR 1728 MP 0.0 TO: DEAD END MP 0.17	1	2	2WU	NO	NO	0.17	30	112	8	3				
TOTAL FOR MAP NO. 21										0.17		112	8	3				
2016CPT.06.04.20261.1	Cumberland	22	SR 2827	FROM: SR 2814 MP 0.0 TO: SR 2831 MP 0.24	1	2	2WU	NO	NO	0.24	20	106	7					
TOTAL FOR MAP NO. 22										0.24		106	7					
2016CPT.06.04.20261.1	Cumberland	23	SR 2829	FROM: SR 1728 MP 0.0 TO: DEAD END MP 0.09	1	2	2WU	NO	NO	0.09	20	40	3					
TOTAL FOR MAP NO. 23										0.09		40	3					
2016CPT.06.04.20261.1	Cumberland	24	SR 2830	FROM: SR 2829 MP 0.0 TO: DEAD END MP 0.07	1	2	2WU	NO	NO	0.07	20	31	2					
TOTAL FOR MAP NO. 24										0.07		31	2					
2016CPT.06.04.20261.1	Cumberland	25	SR 2831	FROM: DEAD END MP 0.0 TO: DEAD END MP 0.13	1	2	2WU	NO	NO	0.13	20	57	4					
TOTAL FOR MAP NO. 25										0.13		57	4					
2016CPT.06.04.20261.1	Cumberland	26	SR 2834	FROM: SR 2827 MP 0.0 TO: DEAD END MP 0.23	1	2	2WU	NO	NO	0.23	20	101	7	8				
TOTAL FOR MAP NO. 26										0.23		101	7	8				

PROJECT NO	COUNTY	MAP NO	ROUTE	DESCRIPTION	TYP NO	LANES	LANE TYPE	FINAL SURFACE TESTING REQUIRED	WARM MIX ASPHALT REQUIRED	LENGTH MI	WIDTH FT	SURFACE COURSE, S4.75A TONS	ASPHALT BINDER FOR PLANT MIX TONS	PATCHING EXISTING PAVEMENT TONS	ADJ. OF MANHOLES EA	ADJ. OF METER OR VALVE BOX EA	TEMPORARY TRAFFIC CONTROL LS	WORK ZONE ADVANCE/ GENERAL WARNING SIGNING SF
2016CPT.06.04.20261.1	Cumberland	27	SR 2835	FROM: SR 2834 MP 0.0 TO: SR 2860 MP 0.11	1	2	2WU	NO	NO	0.11	20	48	3					
TOTAL FOR MAP NO. 27										0.11		48	3					
2016CPT.06.04.20261.1	Cumberland	28	SR 2837	FROM: SR 1722 MP 0.0 TO: DEAD END MP 0.28	1	2	2WU	NO	NO	0.28	24	148	10	10	3	1		
TOTAL FOR MAP NO. 28										0.28		148	10	10	3	1		
2016CPT.06.04.20261.1	Cumberland	29	SR 2839	FROM: SR 1714 MP 0.0 TO: END MAINTENANCE MP 0.43	1	2	2WU	NO	NO	0.43	20	189	13	6	8			
TOTAL FOR MAP NO. 29										0.43		189	13	6	8			
2016CPT.06.04.20261.1	Cumberland	30	SR 2841	FROM: SR 2839 MP 0.0 TO: SR 2853 MP 0.19	1	2	2WU	NO	NO	0.19	20	84	6		3			
TOTAL FOR MAP NO. 30										0.19		84	6		3			
2016CPT.06.04.20261.1	Cumberland	31	SR 2845	FROM: SR 2828 MP 0.0 TO: DEAD END MP 0.19	1	2	2WU	NO	NO	0.19	20	84	6	1	1	1		
TOTAL FOR MAP NO. 31										0.19		84	6	1	1	1		
2016CPT.06.04.20261.1	Cumberland	32	SR 2853	FROM: SR 2839 MP 0.0 TO: END MAINTENANCE MP 0.19	1	2	2WU	NO	NO	0.19	20	84	6	51	3			
TOTAL FOR MAP NO. 32										0.19		84	6	51	3			
2016CPT.06.04.20261.1	Cumberland	33	SR 2802	FROM: SR 1733 MP 0.0 TO: DEAD END MP 0.12	1	2	2WU	NO	NO	0.12	18	48	3	27				
TOTAL FOR MAP NO. 33										0.12		48	3	27				
TOTAL FOR PROJ NO. 2016CPT.06.04.20261.1										7.61		3,614	252	214	21	3	1	839
GRAND TOTAL										7.61		3,614	252	214	21	3	1	839