

STATE OF NORTH CAROLINA
DEPARTMENT OF TRANSPORTATION
HIGHWAY DIVISION 6

PLANS

Let Date: November 14, 2018

CONTRACT ID: D6D2.POC.006

TIP No.: -----

FEDERAL AID NO.: STATE FUNDED

WBS ELEMENT NO.: 2019CPT.06.16.10262.1, 2019CPT.06.16.20262.1 & 2019CPT.06.16.20432.1

ROUTE NO.: VARIOUS PRIMARY & SECONDARY ROUTES

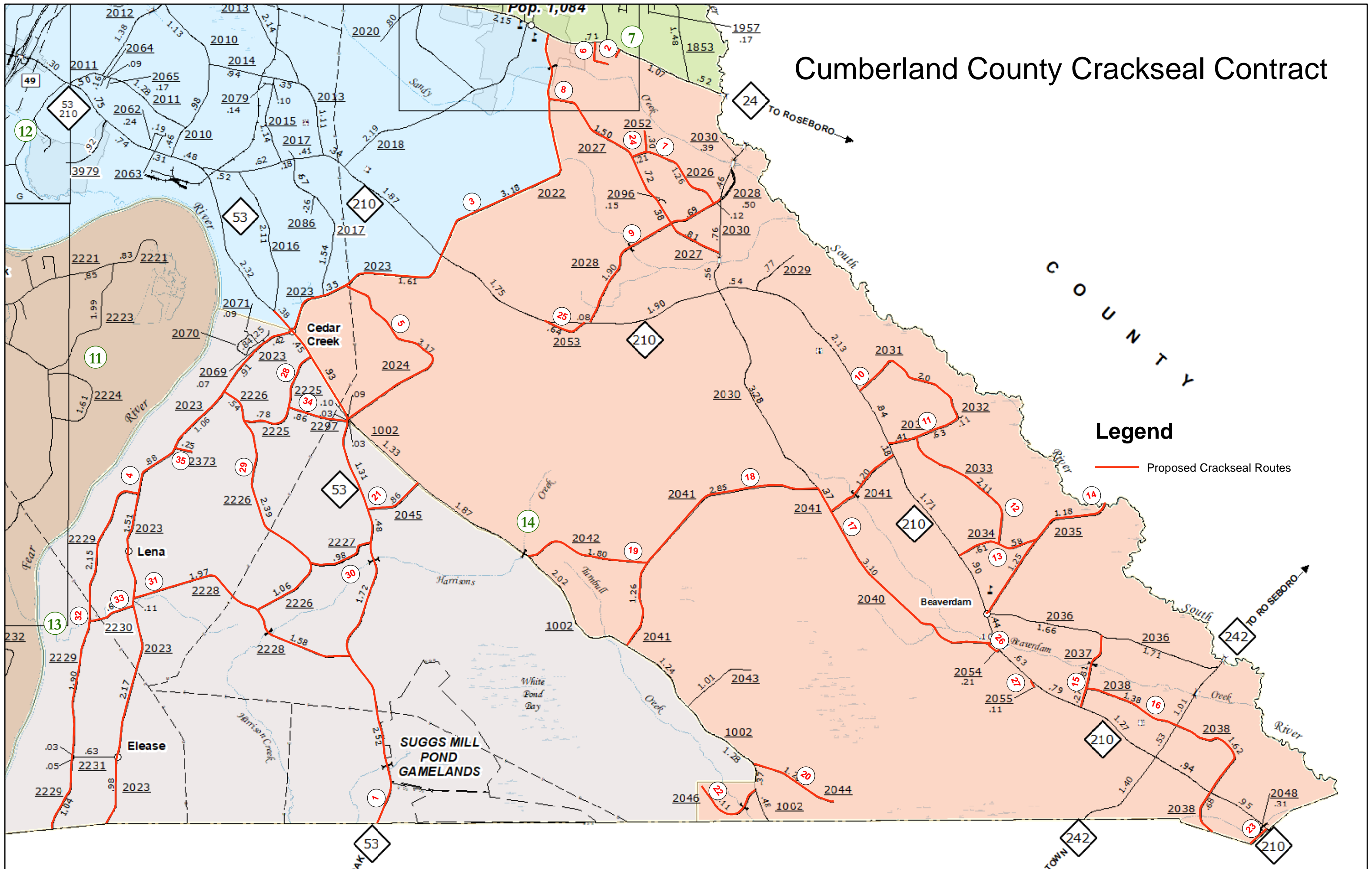
LOCATION: VARIOUS

COUNTY: CUMBERLAND & HARNETT

LENGTH OF PROJECT: 131.550 MILES

TYPE OF WORK: HOT Poured RUBBER ASPHALT JOINT SEALER

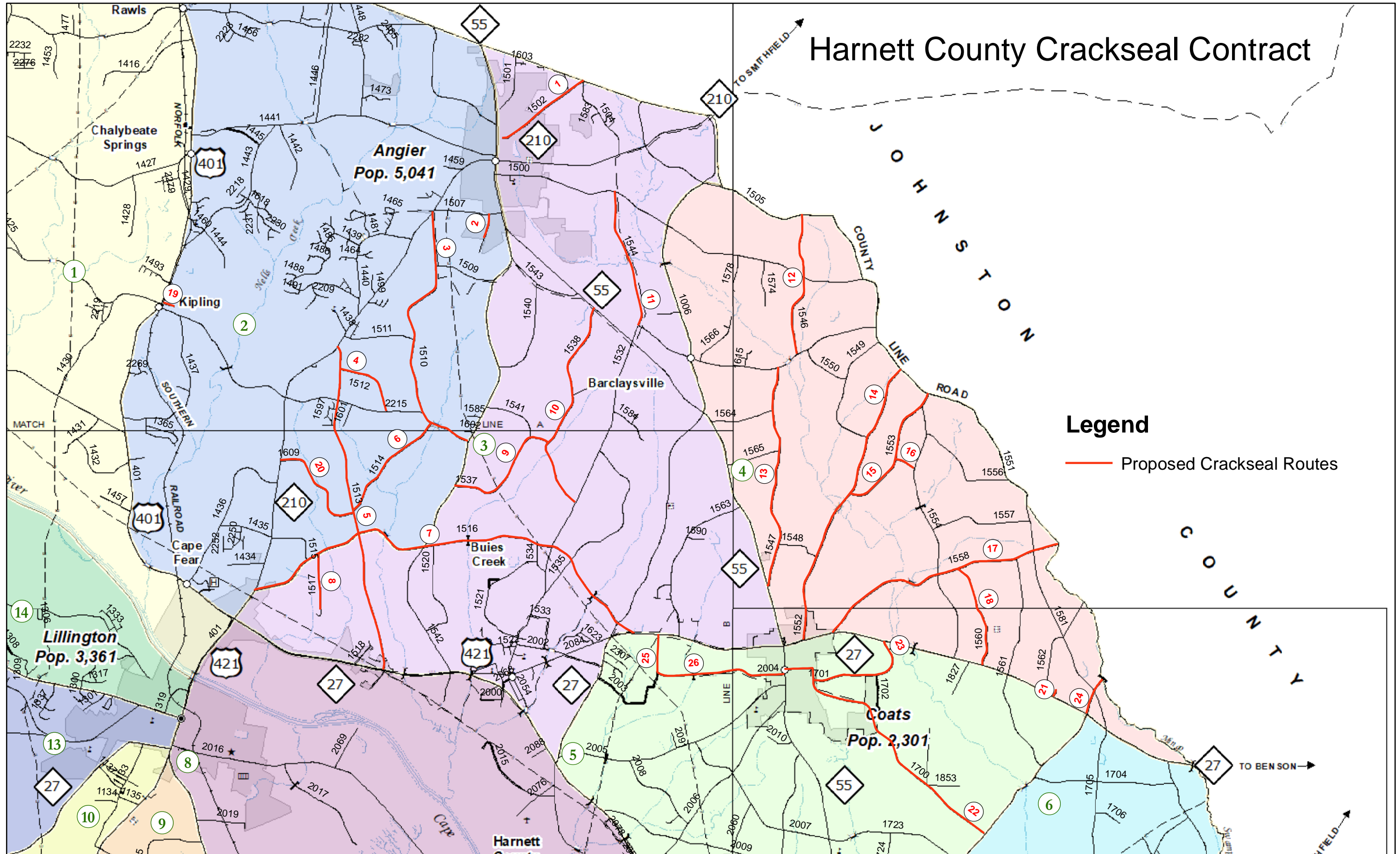
Cumberland County Crackseal Contract



Legend

— Proposed Crackseal Routes

Harnett County Crackseal Contract



SUMMARY OF QUANTITIES

Cumberland – Primary – 2019CPT.06.16.10262.1							
Map	Road	From	From MP	To	To MP	CL Length	Pounds Required
1	NC 53	Bladen CL	0.000	SR 2016	7.897	7.897	27,640
SUBTOTAL						7.897	27,640
Cumberland – Secondary – 2019CPT.06.16.20262.1							
Map	Road	From	From MP	To	To MP	CL Length	Pounds Required
2	SR 1926	NC 24	0.000	DEAD END	0.129	0.129	452
3	SR 2022	NC 210	0.000	NC 24	4.123	4.123	14,431
4	SR 2023	NC 210	0.000	BLADEN CO	10.716	10.716	37,506
5	SR 2024	SR 2023	0.000	NC 53	3.194	3.194	11,179
6	SR 2025	NC 24	0.000	DEAD END	0.469	0.469	1,642
7	SR 2026	SR 2027	0.000	SR 2028	1.473	1.473	5,156
8	SR 2027	SR 2022	0.000	SR 2030	3.398	3.398	11,893
9	SR 2028	NC 210	0.000	SR 2030	2.684	2.684	9,394
10	SR 2031	NC 210	0.000	SR 2032	1.949	1.949	6,822
11	SR 2032	NC 210	0.000	SR 2031	1.039	1.039	3,637
12	SR 2033	SR 2032	0.000	SR 2034	2.117	2.117	7,410
13	SR 2034	NC 210	0.000	SR 2035	1.192	1.192	4,172
14	SR 2035	NC 210	0.000	SAMPSON CL	2.455	2.455	8,593
15	SR 2037	NC 210	0.000	SR 2036	1.079	1.079	3,777
16	SR 2038	SR 2037	0.000	BLADEN CL	3.670	3.670	12,845
17	SR 2040	NC 210	0.000	SR 2041	3.188	3.188	11,158
18	SR 2041	NC 210	0.000	SR 1002	5.679	5.679	19,877
19	SR 2042	SR 2041	0.000	SR 1002	1.801	1.801	6,304
20	SR 2044	SR 1002	0.000	CUL DE SAC	1.264	1.264	4,424
21	SR 2045	SR 1002	0.000	NC 53	0.856	0.856	2,996
22	SR 2046	SR 1002	0.000	CUL DE SAC	1.115	1.115	3,903
23	SR 2048	BLADEN CL	0.000	NC 210	0.313	0.313	1,096
24	SR 2052	SR 2026	0.000	DEAD END	0.304	0.304	1,064
25	SR 2053	NC 210	0.000	NC 210	0.639	0.639	2,237
26	SR 2054	NC 210	0.000	SR 2040	0.210	0.210	735
27	SR 2055	NC 210	0.000	END MAINT	0.108	0.108	378
28	SR 2225	NC 53	0.000	SR 2226	1.595	1.595	5,583
29	SR 2226	SR 2228	0.000	SR 2023	3.981	3.981	13,934
30	SR 2227	NC 53	0.000	SR 2226	0.978	0.978	3,423
31	SR 2228	SR 2023	0.000	NC 53	3.554	3.554	12,439
32	SR 2229	BLADEN CL	0.000	SR 2023	5.167	5.167	18,085
33	SR 2230	SR 2023	0.000	SR 2229	0.666	0.666	2,331
34	SR 2297	NC 53	0.000	SR 2225	0.856	0.856	2,996
35	SR 2373	SR 2023	0.000	CUL DE SAC	0.255	0.255	893
SUBTOTAL						72.216	252,756
TOTAL - CUMBERLAND						80.113	280,396

Harnett – Secondary –2019CPT.06.16.20432.1

Map	Road	From	From MP	To	To MP	CL Length	Pounds Required
1	SR 1502	WAKE CO	0.000	BROAD ST	1.351	1.351	4,729
2	SR 1508	SR 1507	0.000	END PVMT	0.340	0.340	1,190
3	SR 1510	NC 210	0.000	SR 1542	3.653	3.653	12,786
4	SR 1512	SR 1513	0.000	SR 2215	0.952	0.952	3,332
5	SR 1513	NC 210	0.000	US 421	4.452	4.452	15,582
6	SR 1514	SR 1510	0.000	SR 1513	1.614	1.614	5,649
7	SR 1516	NC 27	0.000	NC 210	6.045	6.045	21,158
8	SR 1517	SR 1516	0.000	END PVMT	0.753	0.753	2,636
9	SR 1537	SR 1542	0.000	SR 1538	1.699	1.699	5,947
10	SR 1538	NC 55	0.000	SR 1532	2.950	2.950	10,325
11	SR 1544	SR 1532	0.000	SR 1500	1.881	1.881	6,584
12	SR 1546	SR 1505	0.000	SR 1532	1.951	1.951	6,829
13	SR 1547	NC 55	0.000	SR 1532	3.041	3.041	10,644
14	SR 1552	SR 1551	0.000	NC 27	3.966	3.966	13,881
15	SR 1553	SR 1551	0.000	SR 1552	1.872	1.872	6,552
16	SR 1555	SR 1554	0.000	SR 1553	0.283	0.283	991
17	SR 1558	JOHNSTON CL	0.000	NC 27	3.429	3.429	12,002
18	SR 1560	NC 27	0.000	SR 1558	1.426	1.426	4,991
19	SR 1576	SR 1575	0.000	DEAD END	0.157	0.157	550
20	SR 1609	NC 210	0.000	SR 1513	1.471	1.471	5,149
21	SR 1627	NC 27	0.000	CUL-DE-SAC	0.104	0.104	364
22	SR 1700	SR 1703	0.000	NC 55	3.798	3.798	13,293
23	SR 1701	NC 27	0.000	SR 1700	1.471	1.471	5,149
24	SR 1703	JOHNSTON CL	0.000	NC 27	0.514	0.514	1,799
25	SR 2003	NC 27	0.000	SR 2004	0.516	0.516	1,806
26	SR 2004	SR 2003	0.000	NC 55	1.748	1.748	6,118
TOTAL						51.437	180,030