

STATE OF NORTH CAROLINA  
DEPARTMENT OF TRANSPORTATION  
HIGHWAY DIVISION 6

# PLANS

**Letting Date: March 17, 2021**

**Plans - Revised - 3-15-21**

**CONTRACT ID: DF00280**

**TIP NO.: -----**

**FEDERAL AID NO.: STATE FUNDED**

**WBS ELEMENT NO.: 2021CPT.06.11.20431.1**

**ROUTE NO.: VARIOUS SR ROUTES**

**LOCATION: VARIOUS**

**COUNTY: HARNETT**

**LENGTH OF PROJECT: 30.15 MILES**

**TYPE OF WORK: RESURFACING, SUBDRAIN REPAIR & PVT. MKGS.**

**This electronic collection of documents is provided  
for the convenience of the user  
and is Not a Certified Document –**

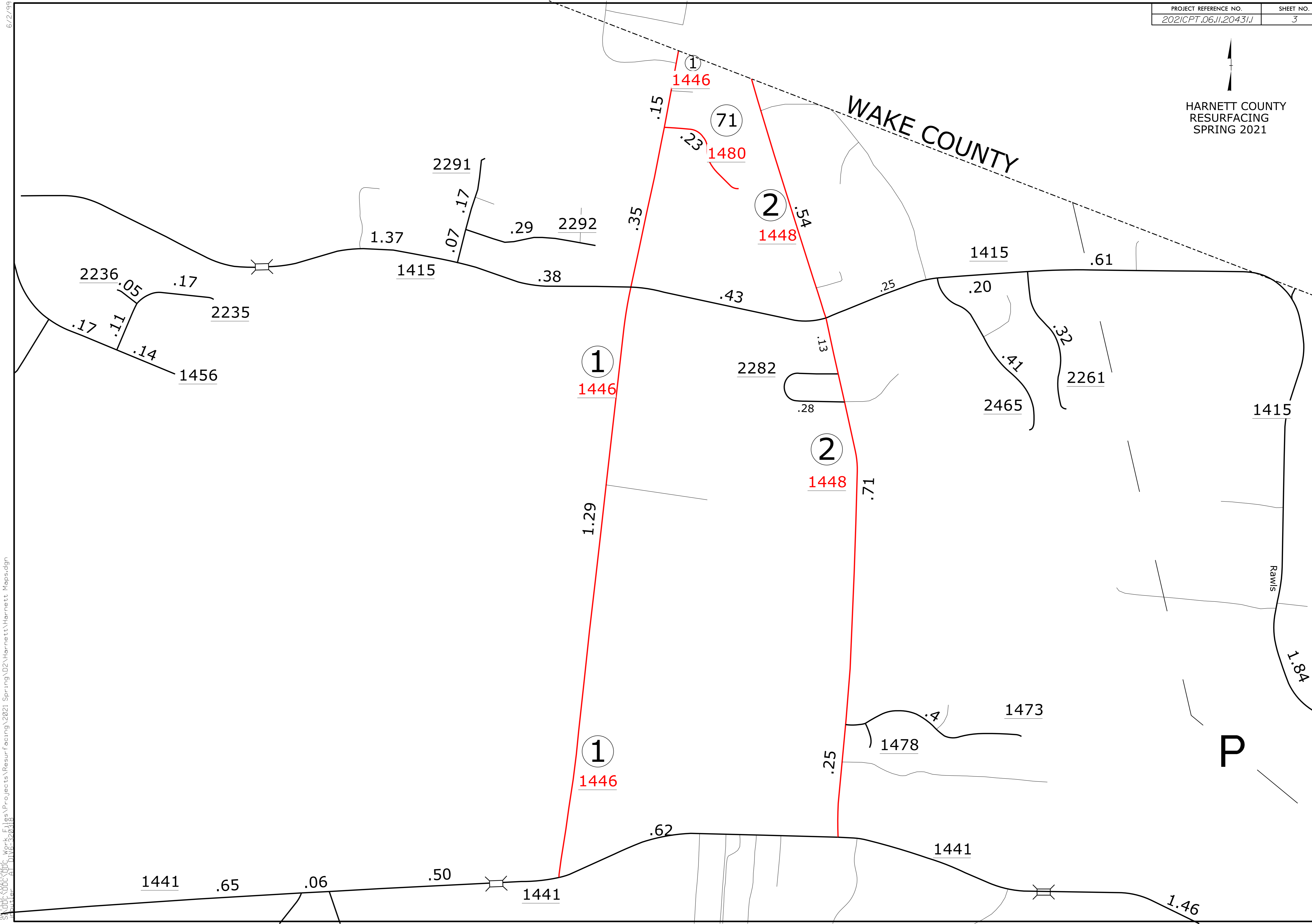
**The documents contained herein were originally issued  
and sealed by the individuals whose names and license  
numbers appear on each page, on the dates appearing  
with their signature on that page.**

**This file or an individual page  
shall not be considered a certified document.**



HARNETT COUNTY  
RESURFACING  
SPRING 2021

WAKE COUNTY

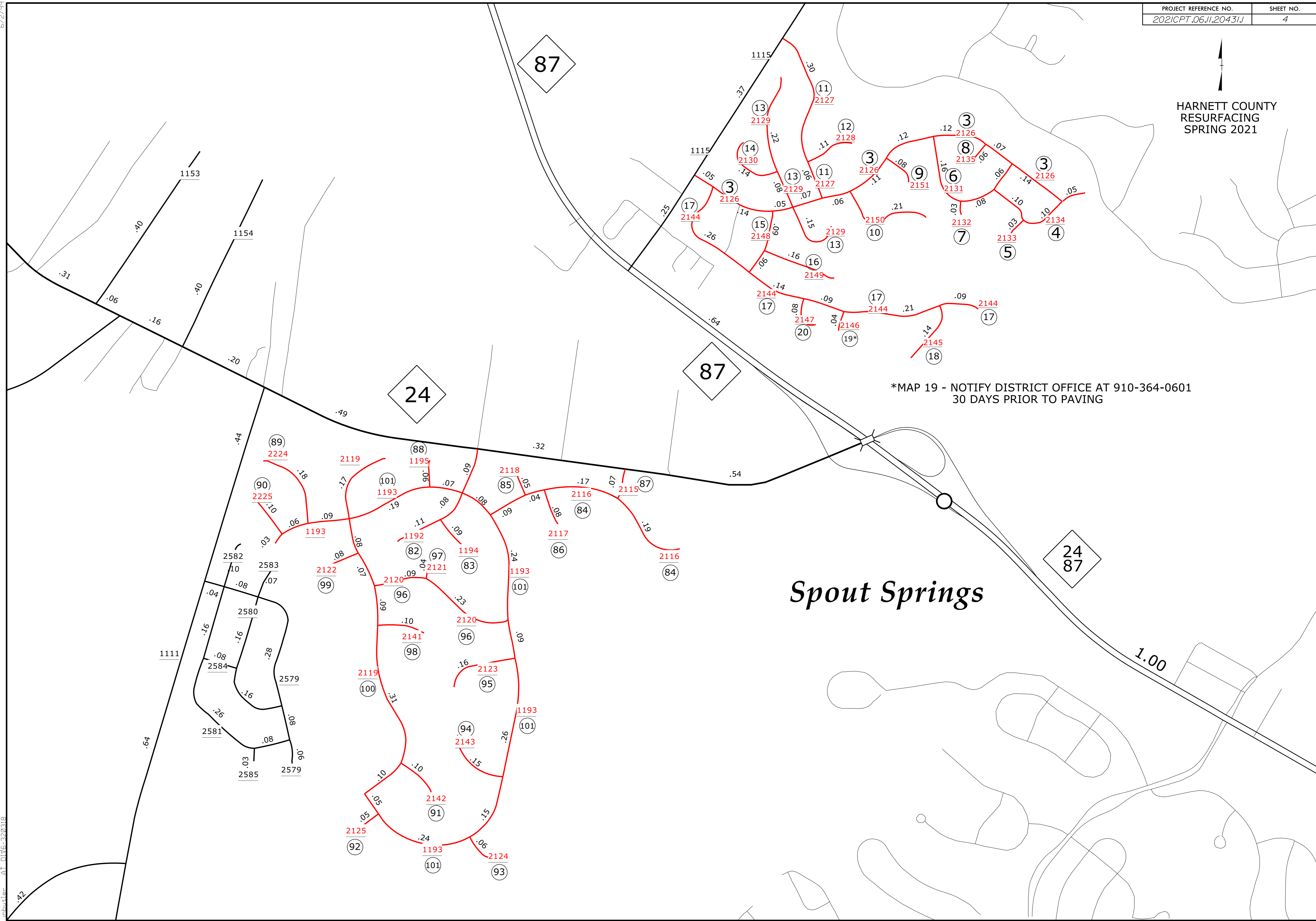


6/2/99  
18-FEB-2021 15:25  
S:\DTC\DDC\00\CIVIL\2021\06\11\20431.1\18-FEB-2021 15:25.dwg  
18-FEB-2021 15:25  
S:\DTC\DDC\00\CIVIL\2021\06\11\20431.1\18-FEB-2021 15:25.dwg



HARNETT COUNTY  
RESURFACING  
SPRING 2021

6/2/09

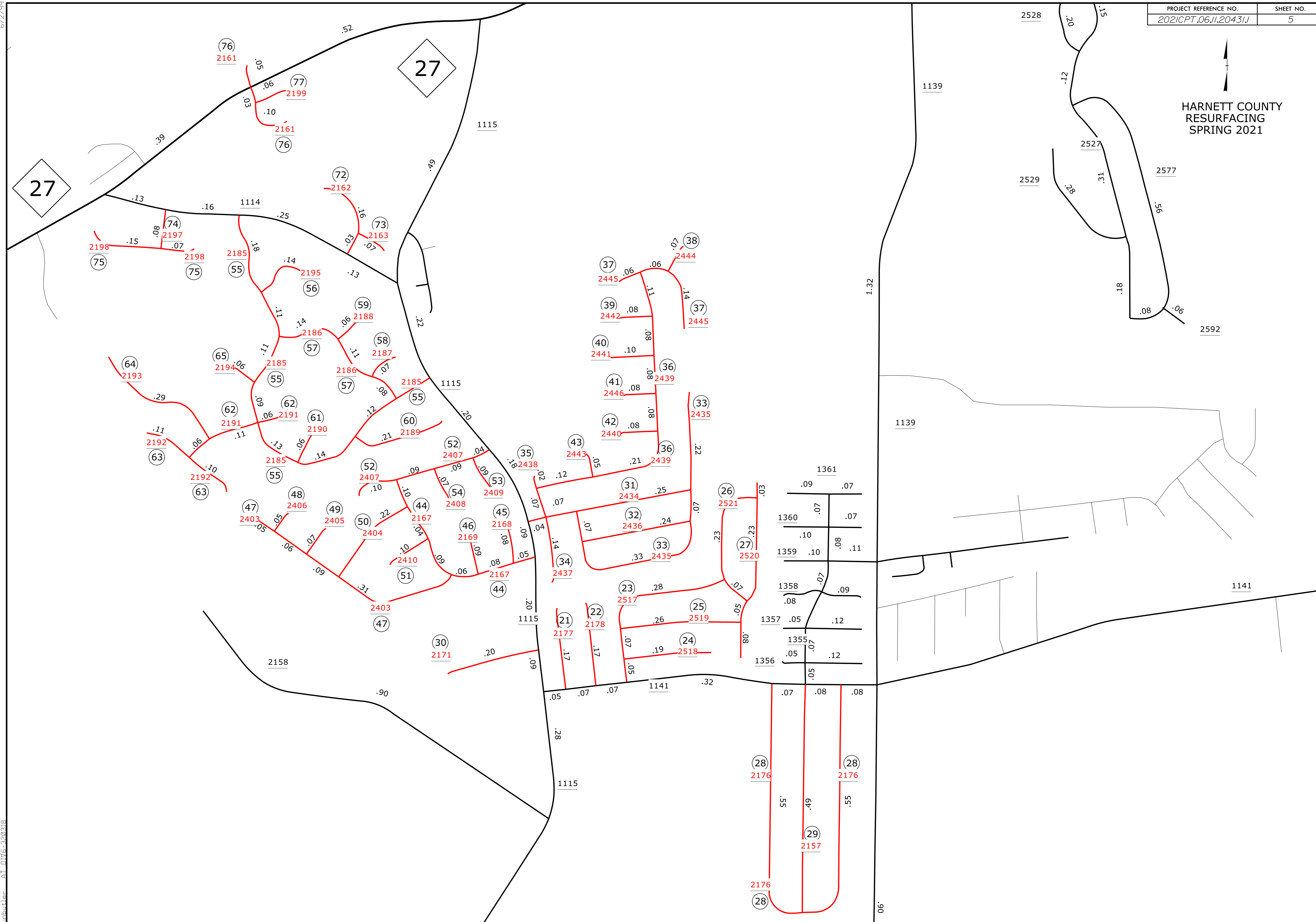


\*MAP 19 - NOTIFY DISTRICT OFFICE AT 910-364-0601  
30 DAYS PRIOR TO PAVING

*Spout Springs*



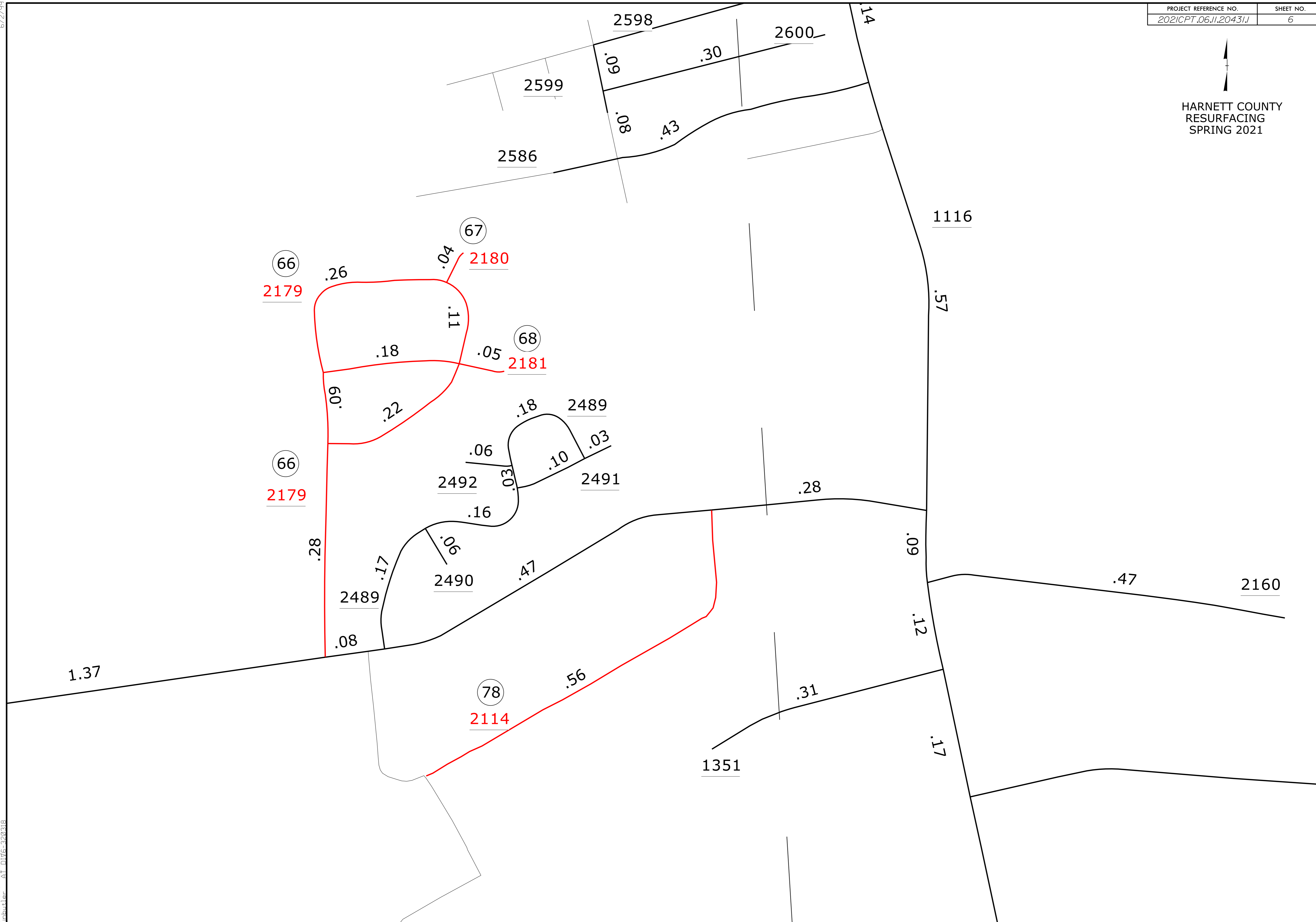
HARNETT COUNTY  
RESURFACING  
SPRING 2021



6/2/99



HARNETT COUNTY  
RESURFACING  
SPRING 2021

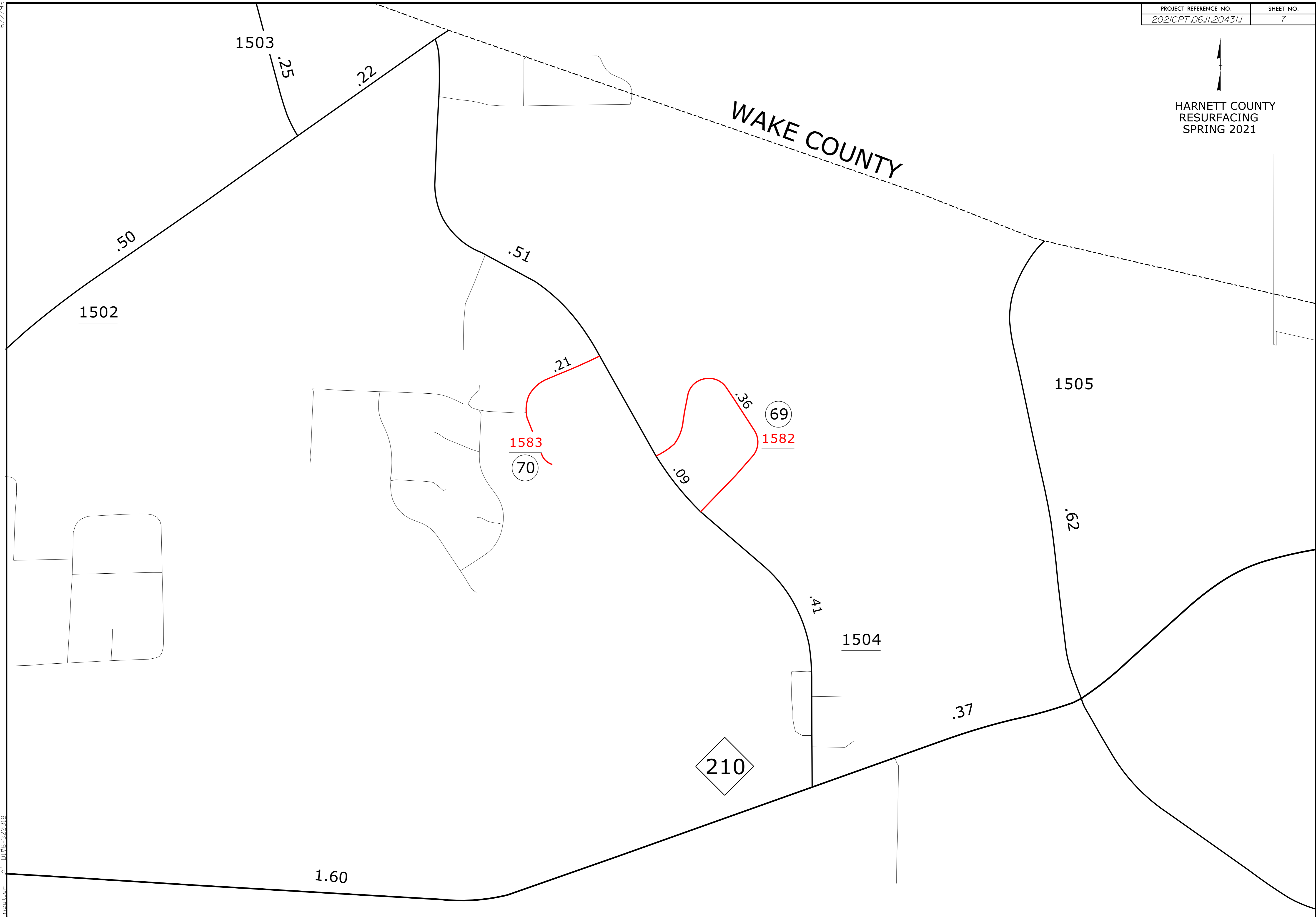


6/2/99  
18-FEB-2021 15:26  
\\harnett\map\320318  
001116-320318



HARNETT COUNTY  
RESURFACING  
SPRING 2021

WAKE COUNTY



6/2/99

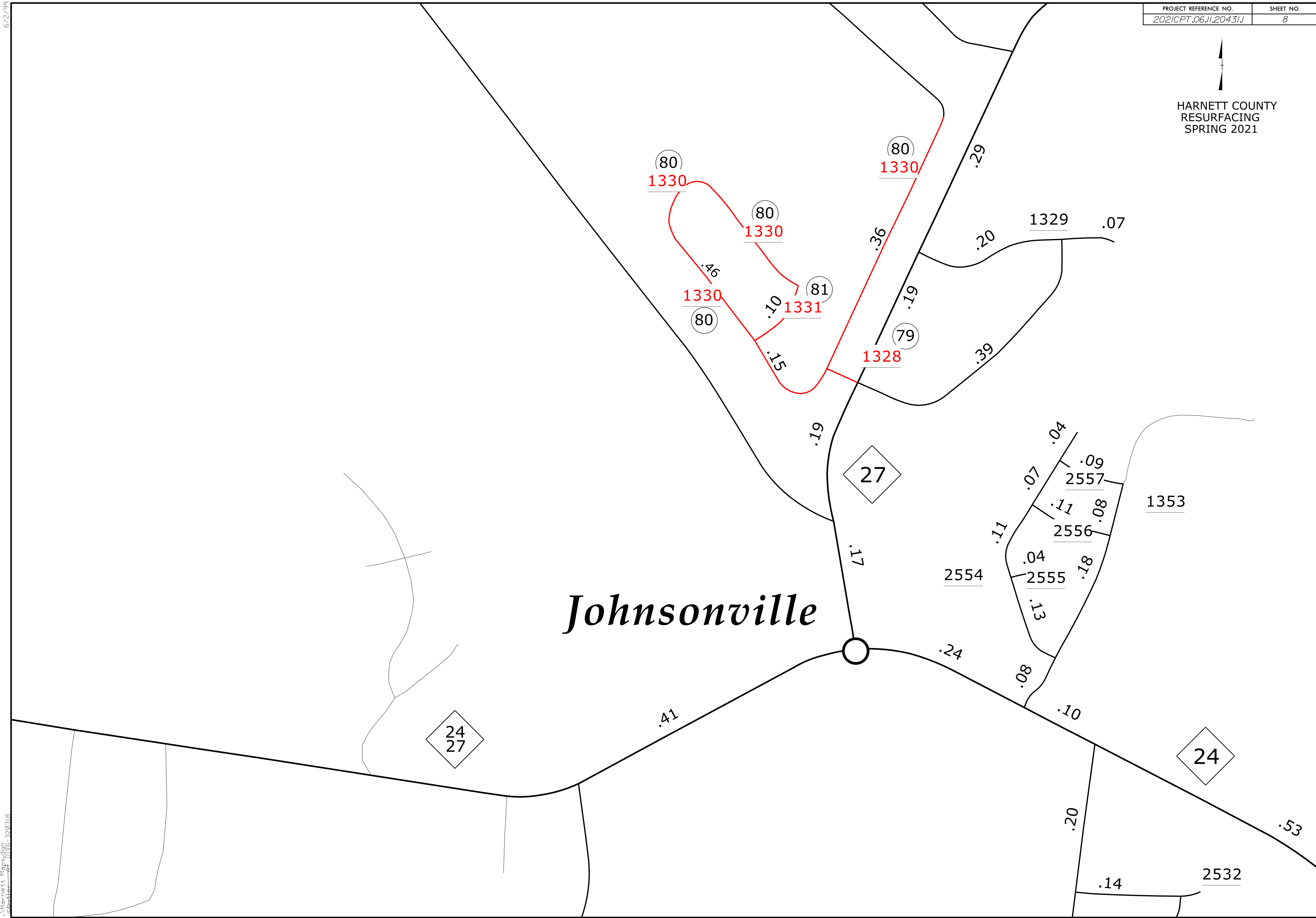
18-FEB-2021 15:27  
Harnett Map.swg  
320318



HARNETT COUNTY  
RESURFACING  
SPRING 2021

6/2/99

18-FEB-2021 15:27  
A:\Harnett Map\2021\06-320318

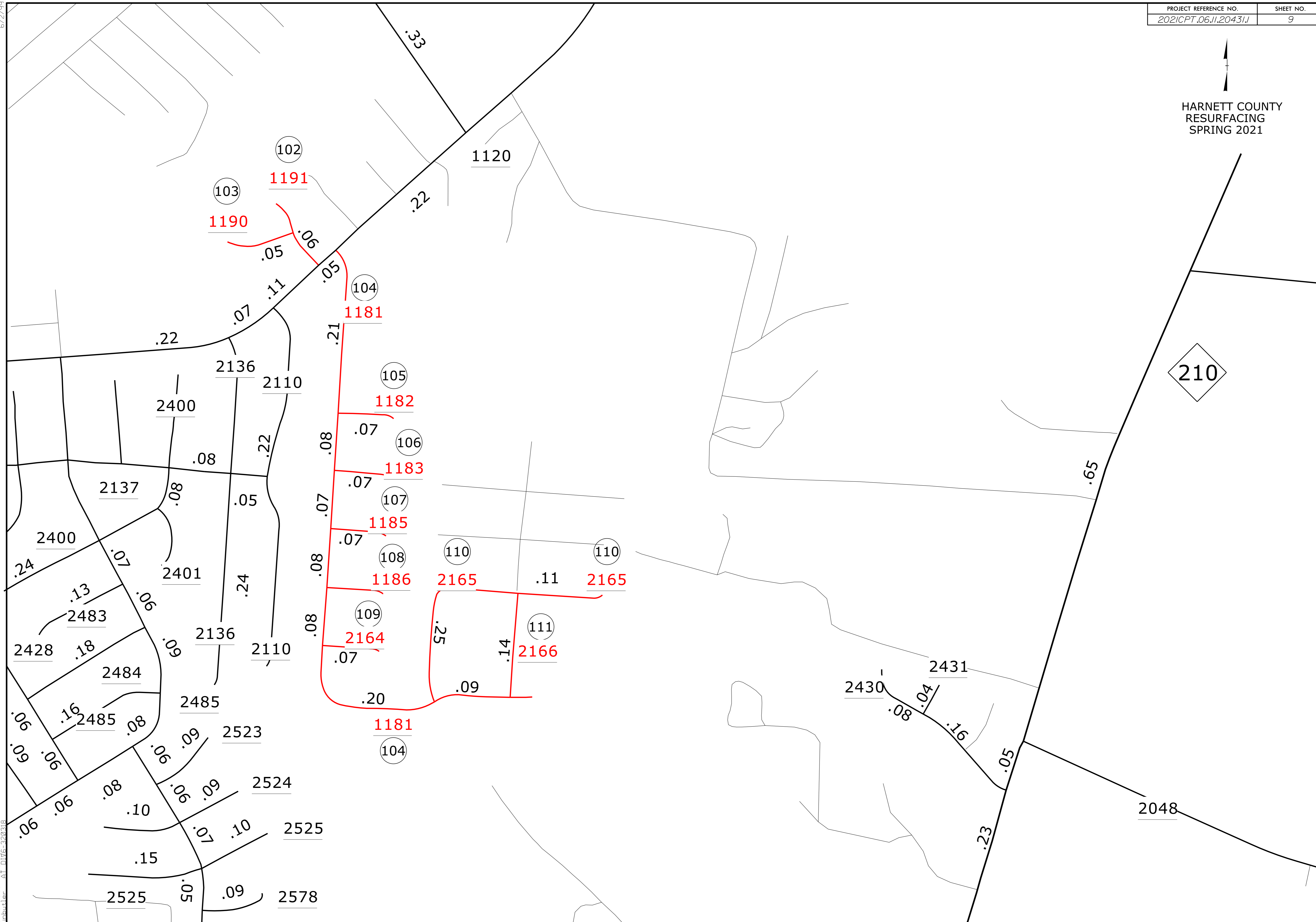






HARNETT COUNTY  
RESURFACING  
SPRING 2021

210

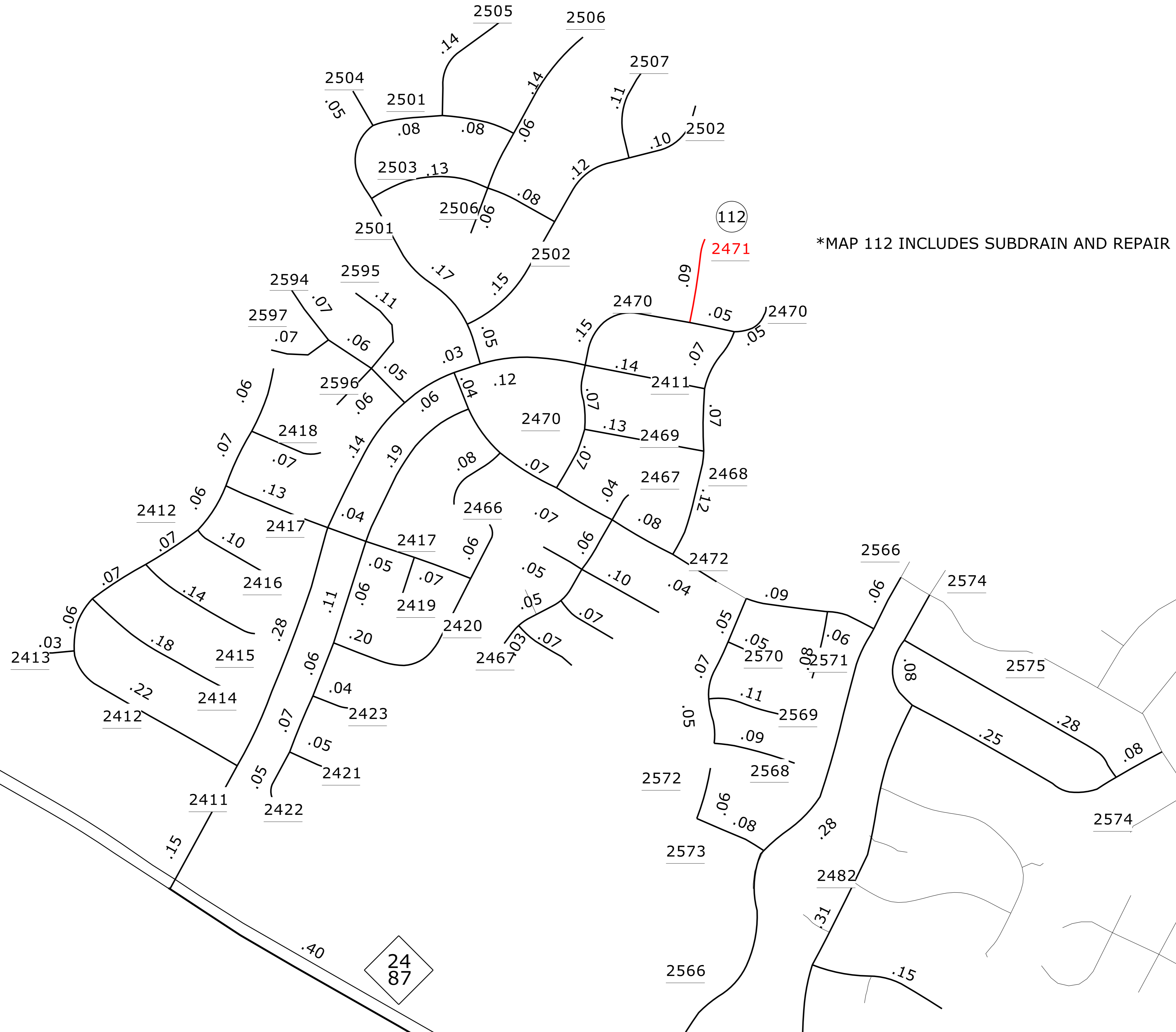


6/2/99

18-FEB-2021 15:28  
Harnett Mapsdwg  
320318



HARNETT COUNTY  
RESURFACING  
SPRING 2021

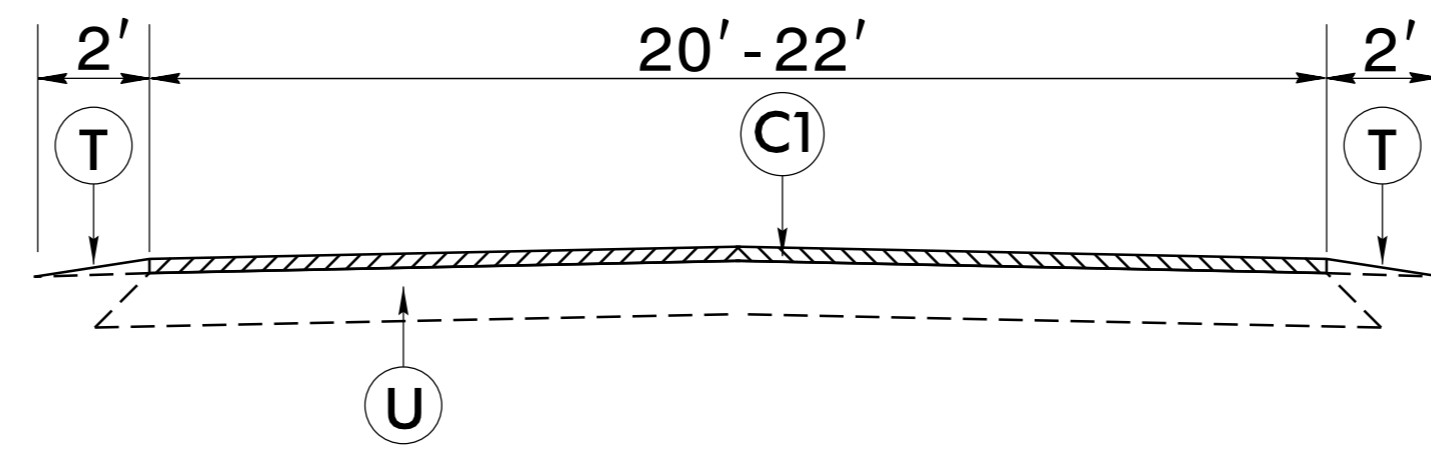


6/2/99

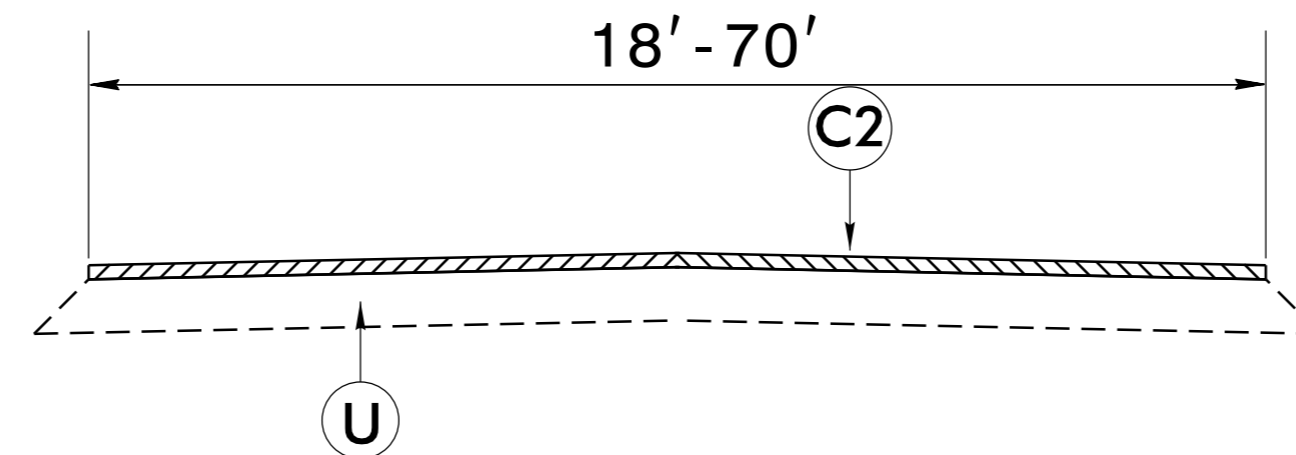
18-FEB-2021 15:28  
Harnett Maps.dwg  
202106-320318

# PAVEMENT SCHEDULE

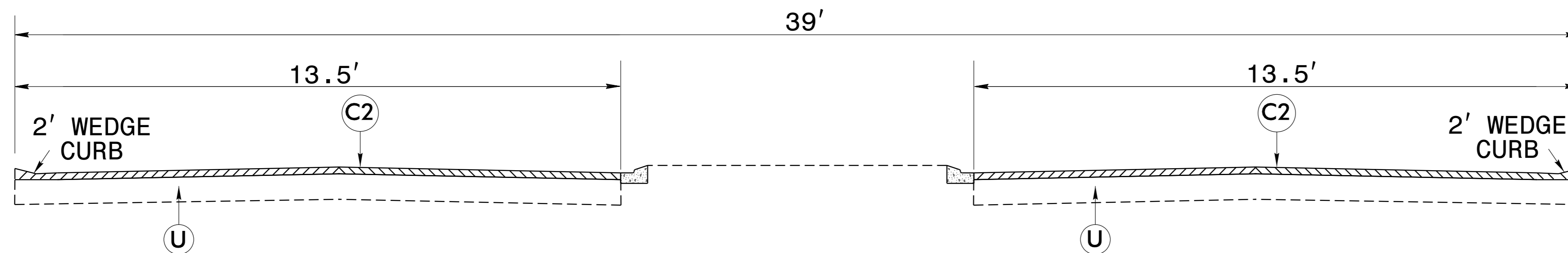
C1	1½" ASPHALT CONCRETE SURFACE COURSE, TYPE S9.5B, AT AN AVERAGE RATE OF 165 LBS. PER SQ. YD.
C2	1" ASPHALT CONCRETE SURFACE COURSE, TYPE S9.5B, AT AN AVERAGE RATE OF 110 LBS. PER SQ. YD.
E1	5½" ASPHALT CONCRETE BASE COURSE, TYPE B25.0C, AT AN AVERAGE RATE OF 627 LBS. PER SQ. YD.
T	SHOULDER RECONSTRUCTION WITH AGGREGATE SHOULDER BORROW
U	EXISTING PAVEMENT



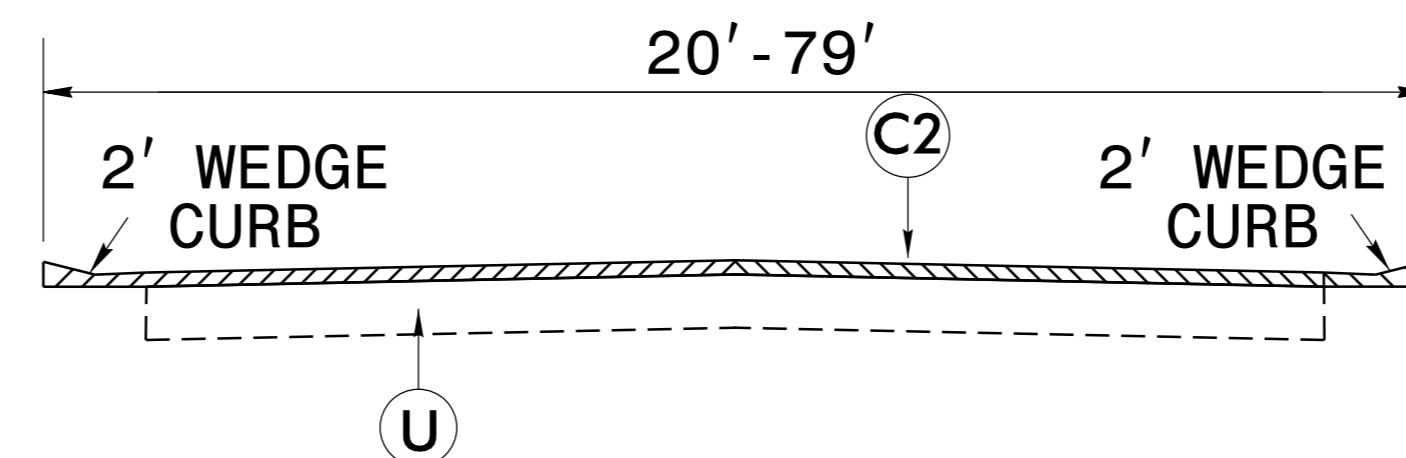
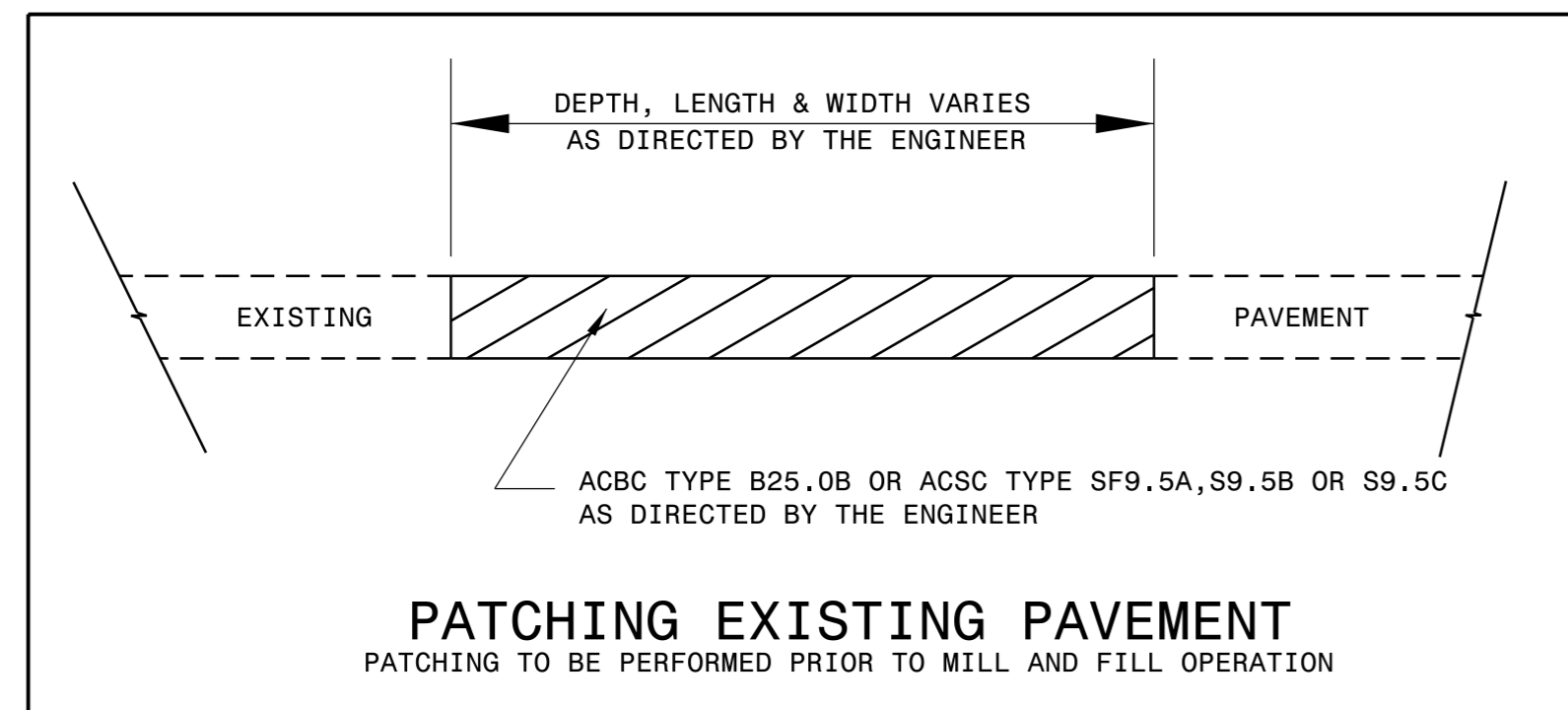
TYPICAL SECTION NO. 1



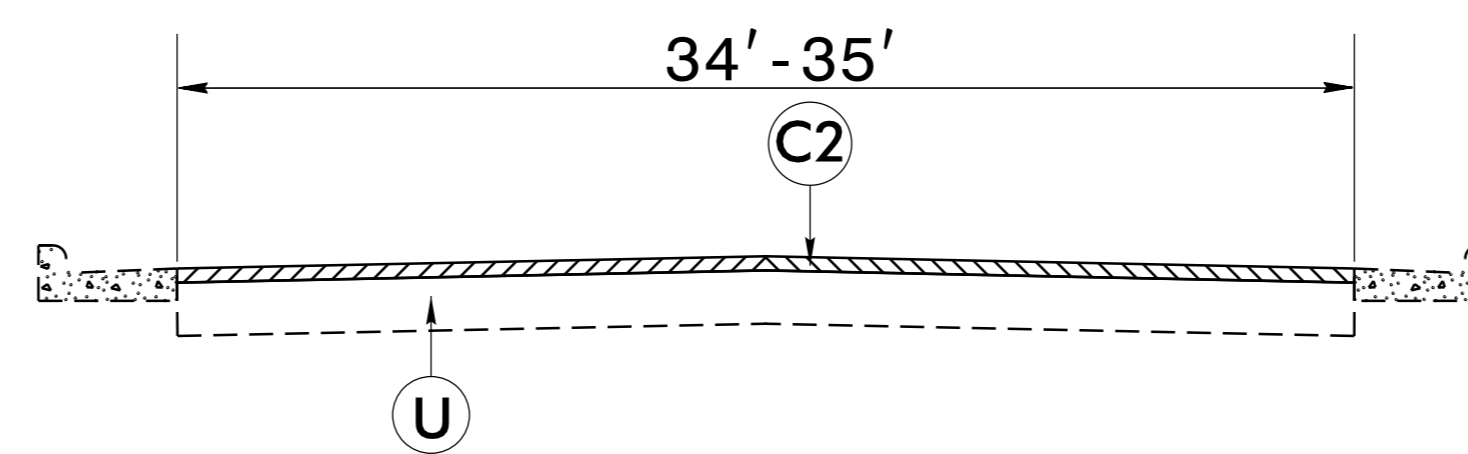
TYPICAL SECTION NO. 2



TYPICAL SECTION NO. 3



TYPICAL SECTION NO. 4



TYPICAL SECTION NO. 5

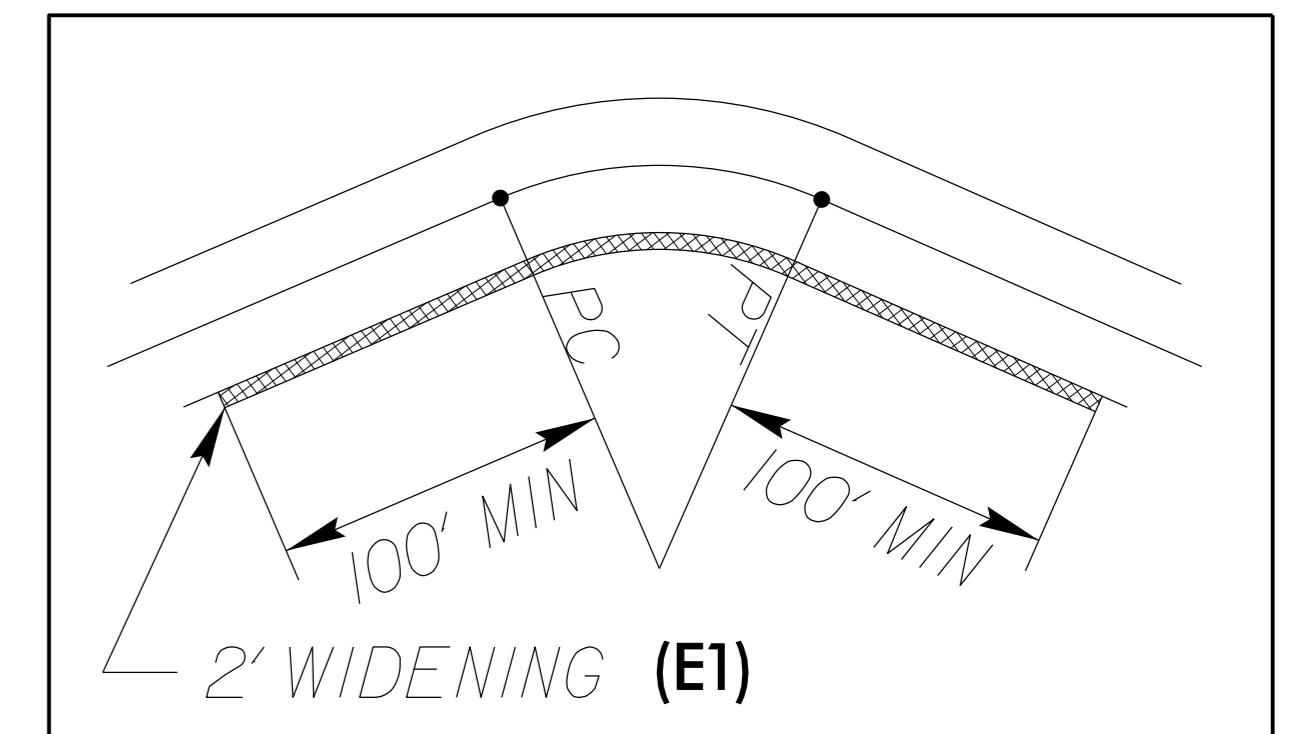
**NOTES TO CONTRACTOR**

FOR SURFACE MIXES OVER 1" IN THICKNESS, MILL THE EXISTING PAVEMENT IN ACCORDANCE WITH THE FOLLOWING SKETCH AS DIRECTED BY THE ENGINEER.

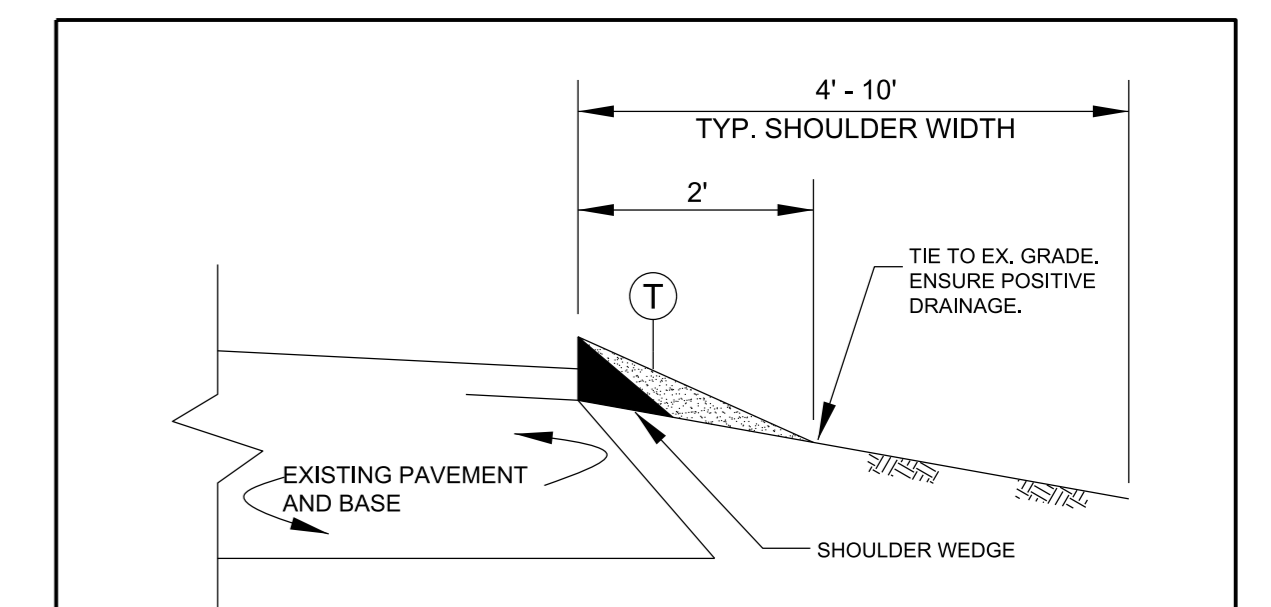
LOCATIONS SHALL INCLUDE TIES INTO EXISTING CONCRETE PAVEMENT, AT BRIDGE APPROACHES WHERE THE BRIDGE WILL NOT BE RESURFACED, AND AT THE BEGINNING AND ENDING POINT OF EACH RESURFACING MAP.

PERFORM THE WORK IN ACCORDANCE WITH SECTION 607 OF THE JANUARY 2012 NORTH CAROLINA DEPARTMENT OF TRANSPORTATION STANDARD SPECIFICATIONS FOR ROADS AND STRUCTURES. RESURFACING WILL BE ACCOMPLISHED AT THE SAME TIME AS THE MILLING OPERATION.

MILLING AT PAVEMENT TIE-INS DETAIL

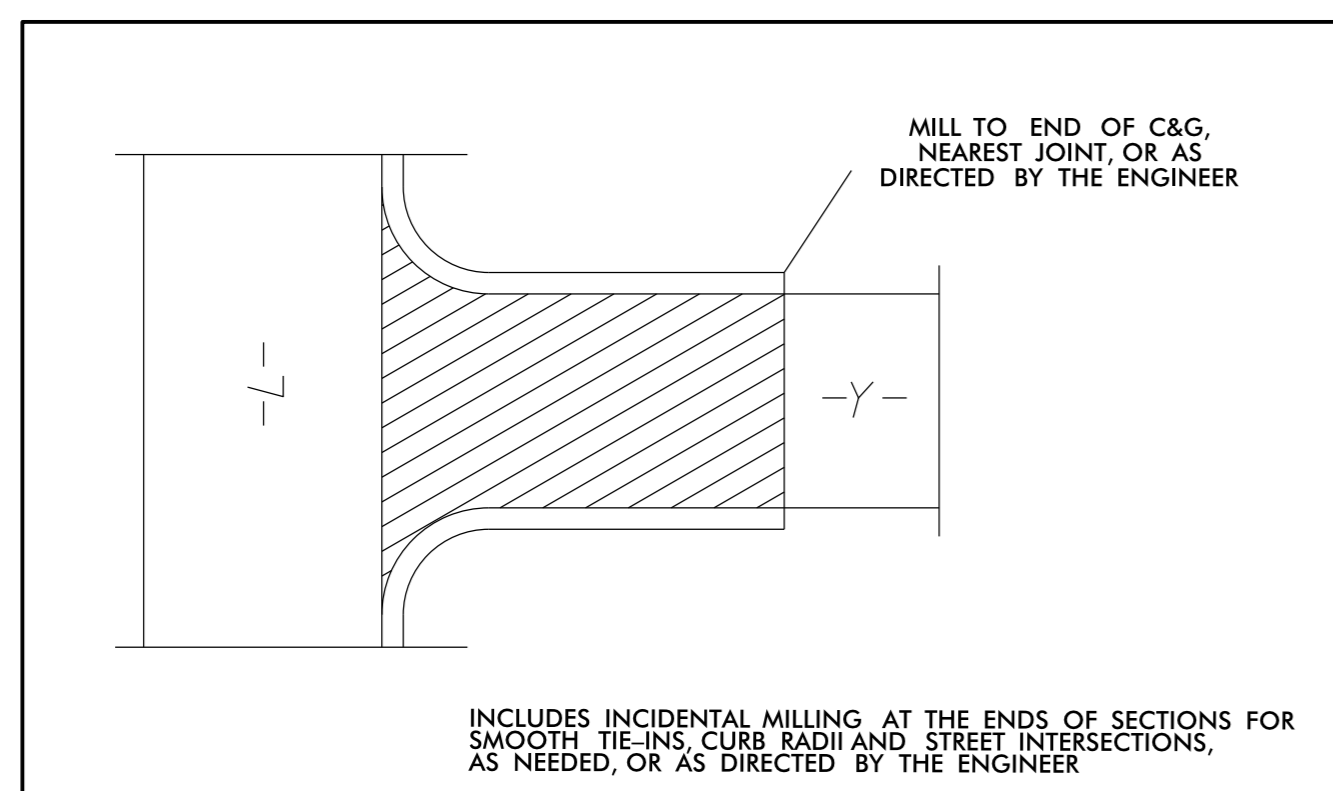


INSIDE CURVE WIDENING MAP 2



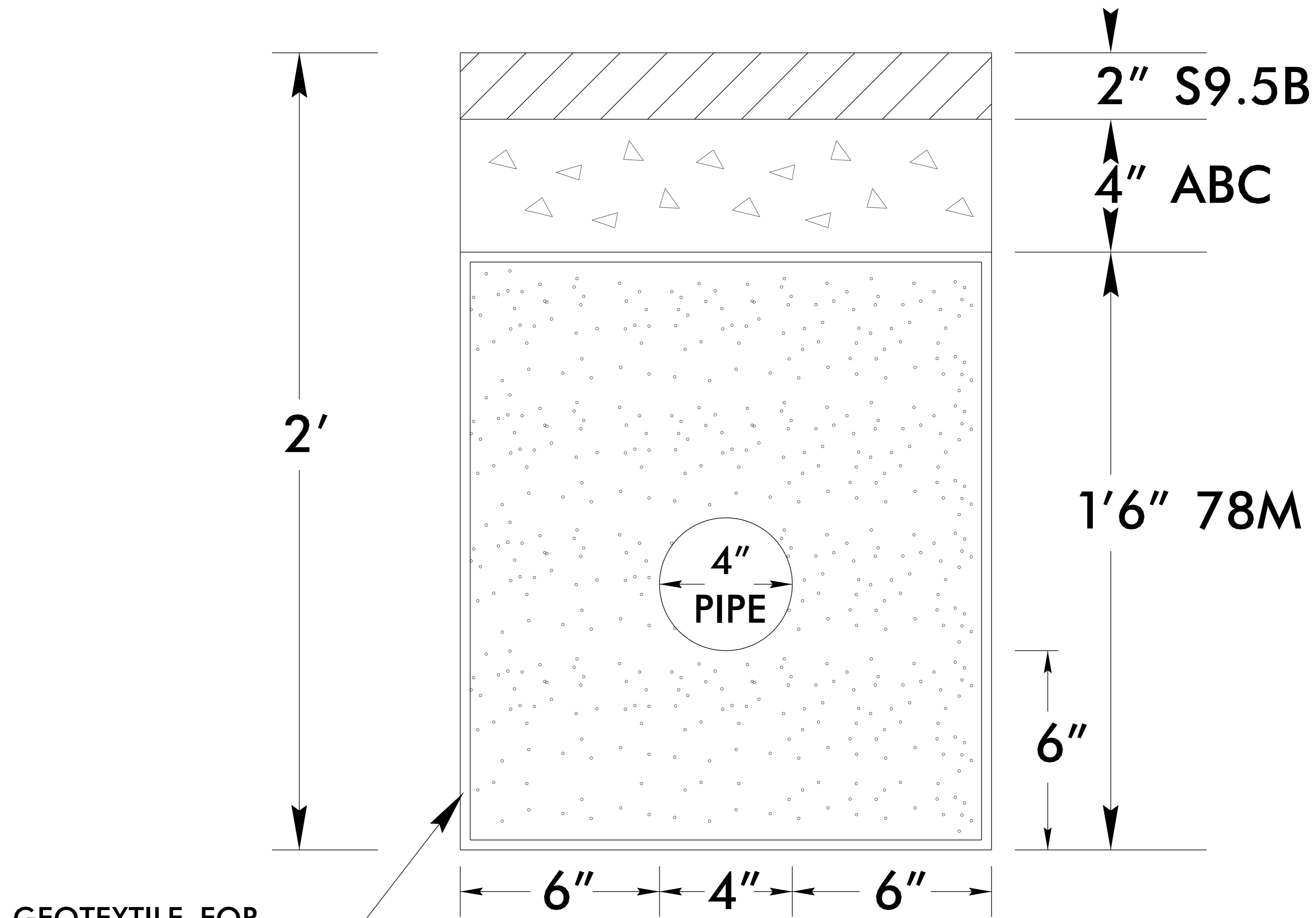
SHOULDER RECONSTRUCTION

- NOTES:**
- SHOULDER SHALL BE RECONSTRUCTED AS SHOWN IN STD. DWG. NO. 560.01 & 560.02, WITH A MINIMUM SLOPE OF 1" PER FOOT TO ENSURE POSITIVE DRAINAGE AWAY FROM ROADWAY.
  - AGGREGATE SHOULDER BORROW (ASB) MATERIAL SHALL BE PLACED USING A WIDENING MACHINE OR SIMILAR DEVICE.
  - A VEGETATIVE BUFFER SHALL BE MAINTAINED BETWEEN THE DISTURBED AREA ALONG THE EDGE OF PAVEMENT AND THE DITCH SHOULDER POINT TO MINIMIZE EROSION. PULLING DITCHES OR CUTTING SHOULDERS TO GENERATE BORROW MATERIAL WILL NOT BE ALLOWED.
  - REQUIRED BORROW MATERIAL MAY BE OBTAINED BY THE CONTRACTOR FROM WIDENING OPERATIONS WITHIN THE PROJECT LIMITS, FROM NCDOT APPROVED BORROW PITS OR FROM NCDOT STOCKPILES. ANY EXCESS MATERIAL SHALL BE DISPOSED OF BY THE CONTRACTOR IN AN APPROVED DISPOSAL SITE.



MILLING AT CURB AND GUTTER INTERSECTIONS

6/2/99

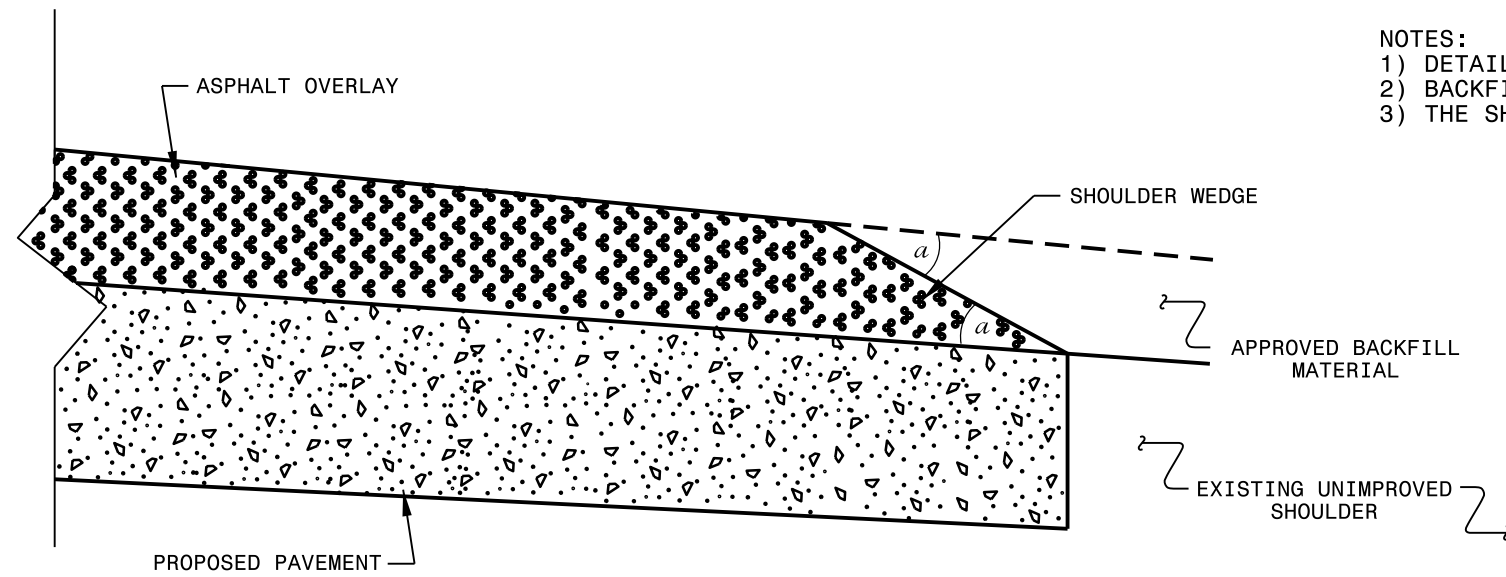


GEOTEXTILE FOR  
SUBSURFACE DRAINS  
SHALL ENCLOSE 78M STONE

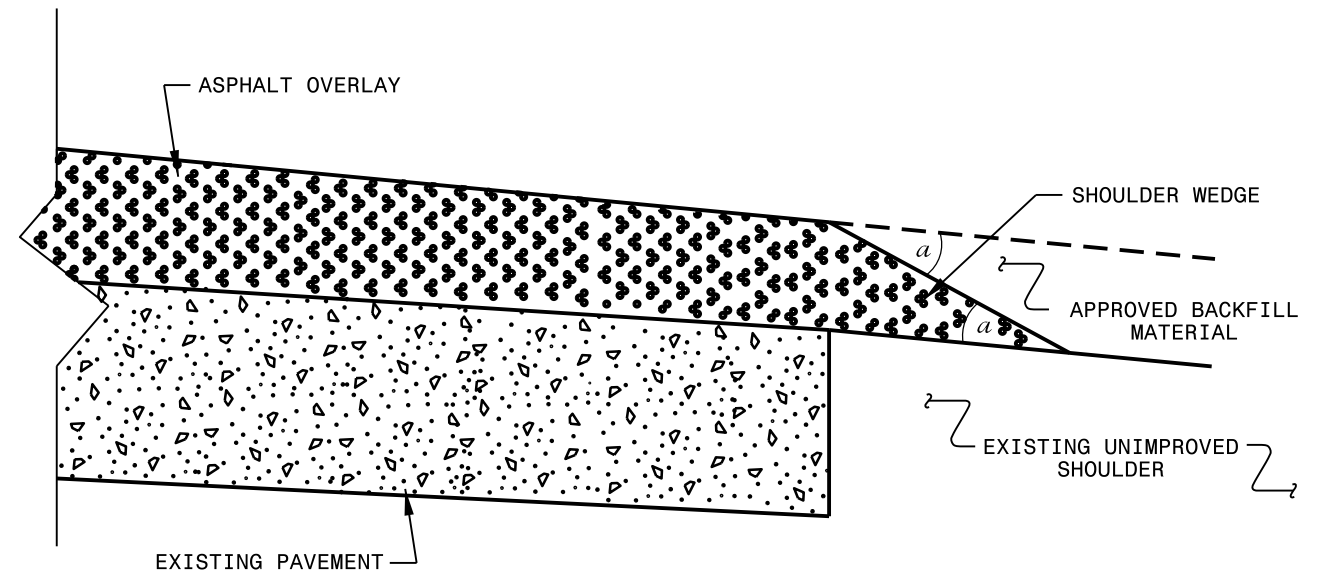
### SUBDRAIN DETAIL

15-MAR-2021 08:54  
4388056789010203040506070809

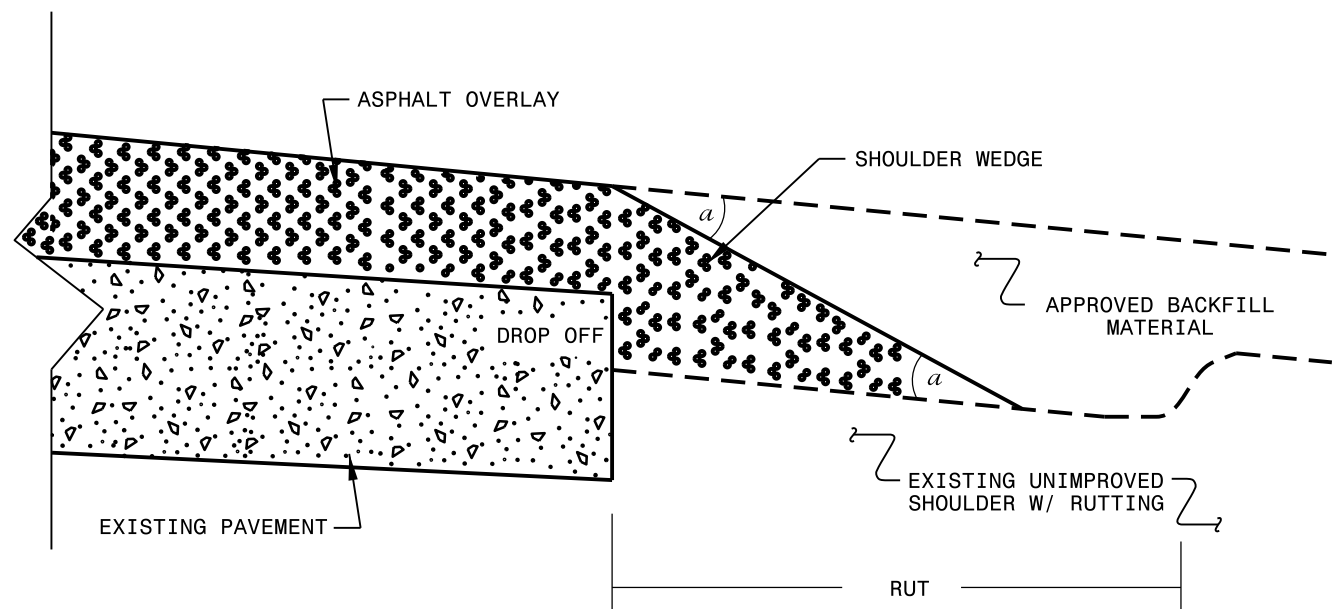
- NOTES:
- 1) DETAIL DOES NOT APPLY TO OGAFc AND ULTRA-THIN BONDED WEARING COURSE.
  - 2) BACKFILL SHOULDER WITH APPROVED MATERIAL.
  - 3) THE SHOULDER WEDGE DEVICE MAY BE DISENGAGED AT PAVED DRIVEWAYS AND SIDE STREETS.



**SHOULDER WEDGE DETAIL**  
(Resurfacing Projects w/ Widening or  
with Existing Paved Shoulder having no dropoffs)



**SHOULDER WEDGE DETAIL**  
(Resurfacing Projects w/ NO Widening)



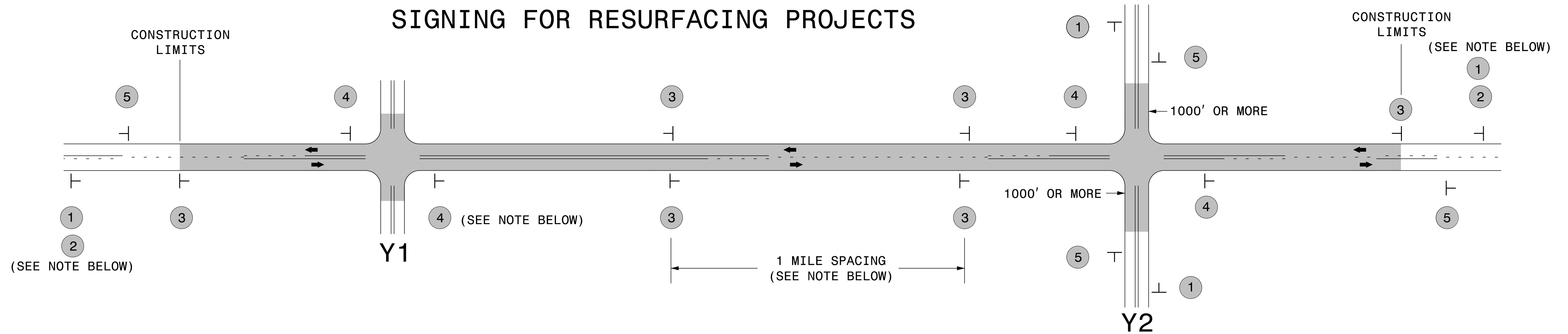
**SHOULDER WEDGE DETAIL**  
(Resurfacing Adjacent to  
Rutted Shoulder)

- SHOULDER WEDGE ANGLE = 30°

<b>CONTRACT STANDARDS AND DEVELOPMENT UNIT</b>			
Office 919-707-6950		FAX 919-250-4119	
<b>SHOULDER WEDGE DETAILS</b>			
ORIGINAL BY: T.SPELL	DATE: 7-19-11		
MODIFIED BY:	DATE: 10/16/12		
CHECKED BY:	DATE:		
FILE SPEC.: susr/details/stand/shoulderwedgedetail.dgn			

SYSTEMS DESIGN  
USER NAME

# SIGNING FOR RESURFACING PROJECTS



LEGEND	
	STATIONARY SIGN
←	DIRECTION OF TRAFFIC FLOW

## MAINLINE (-L-) SIGNING

## -Y- LINE SIGNING

SIGNING NOTES AND PLACEMENT PER DIRECTION	MAINLINE (-L-) SIGNING		-Y- LINE SIGNING	
	1	 <small>W20-1 48" X 48"</small>	PLACE 1000' PRIOR TO BEGINNING OF CONSTRUCTION LIMITS. ONLY USED ON -Y- LINES IF RESURFACING LIMITS EXTEND 1000' ALONG -Y- LINE.	<p style="text-align: center;"><b>NO REQUIRED STATIONARY SIGNING FOR THE FOLLOWING -Y- LINE CONDITIONS:</b></p> <ol style="list-style-type: none"> <li>1) LESS THAN 1000' OF RESURFACING ALONG -Y- LINE</li> <li>2) SUBDIVISION ROADS</li> <li>3) DEAD END ROADS</li> </ol> <p>WHEN PAVING/CONSTRUCTION ACTIVITIES PROCEED ACROSS AN UNSIGNED -Y- LINE, ADVANCE WARNING PORTABLE SIGNS SHALL BE USED ALONG THE -Y- LINE AS SHOWN BELOW. REMOVE UPON COMPLETION OF WORK.</p> <div style="display: flex; justify-content: space-around; align-items: center;"> <div style="text-align: center;">   <small>W20-1 48" X 48"</small> </div> <div style="text-align: center;">   <small>W20-7 A 48" X 48"</small> </div> </div> <p style="text-align: center;">PLACED 500' IN ADVANCE OF FLAGGER. PLACED 250' IN ADVANCE OF FLAGGER.</p>
	2	 <small>W7-3aP 24" X 18"</small>	#2 SIGN ONLY USED WHEN RESURFACING LIMITS ARE 2 OR MORE MILES IN LENGTH. ROUND UP TO NEXT WHOLE NUMBER. (NO FRACTIONAL OR DECIMAL NUMBERS)	
	3	 <small>SP 13107 48" X 48"</small>	PLACE INITIALLY AT THE CONSTRUCTION LIMITS AND SPACED 1 MILE APART THEREAFTER. IF NO -Y- LINES EXIST, PLACE 2ND SET 1/2 MILE FROM THE CONSTRUCTION LIMITS AND THEN SPACE 1 MILE THEREAFTER.	
	4	 <small>SP 13106 48" X 48"</small>	THESE ARE FOR -Y- LINES THAT ARE "THROUGH" ROADWAYS. DEAD END AND SUBDIVISION ROADS ARE NOT "THROUGH" ROADWAYS. INSTALL 500' +/- FROM EACH -Y- LINE APPROACH AS SHOWN ABOVE. FOR MULTIPLE -Y- LINES THAT ARE SEPARATED BY 0.25 MILES OR LESS, TREAT AS A SINGLE UNIT AND INSTALL WITHIN 500' OF EACH APPROACH. A MAXIMUM OF 2 SIGN SETS PER MILE. DO NOT INSTALL WHEN -Y- LINES ARE WITHIN 0.5 MILES FROM "END ROAD WORK" SIGN.	
5	 <small>G20-2 A 48" X 24"</small>	PLACE 500' FOLLOWING THE END OF CONSTRUCTION LIMITS.		

**RESURFACING  
ADVANCE WARNING SIGNS  
FOR  
RURAL AND SUBURBAN  
2 LANE ROADWAYS**

**GUIDELINES FOR LANE WIDTHS ON RESURFACING PROJECTS**

Contractor shall place the new pavement markings in accordance with this table and detail unless otherwise directed by the Engineer.

<b>TWO LANE - TWO WAY ROADWAY - 55 MPH</b>		
ROADWAY WIDTH	LANE WIDTH	SHOULDER WIDTH
18'	9' *	0'
20'	10' *	0'
22'	10'	1'
24'	10'	2'
26'	11'	2'
28'	12'	2'
32'	12'	4'

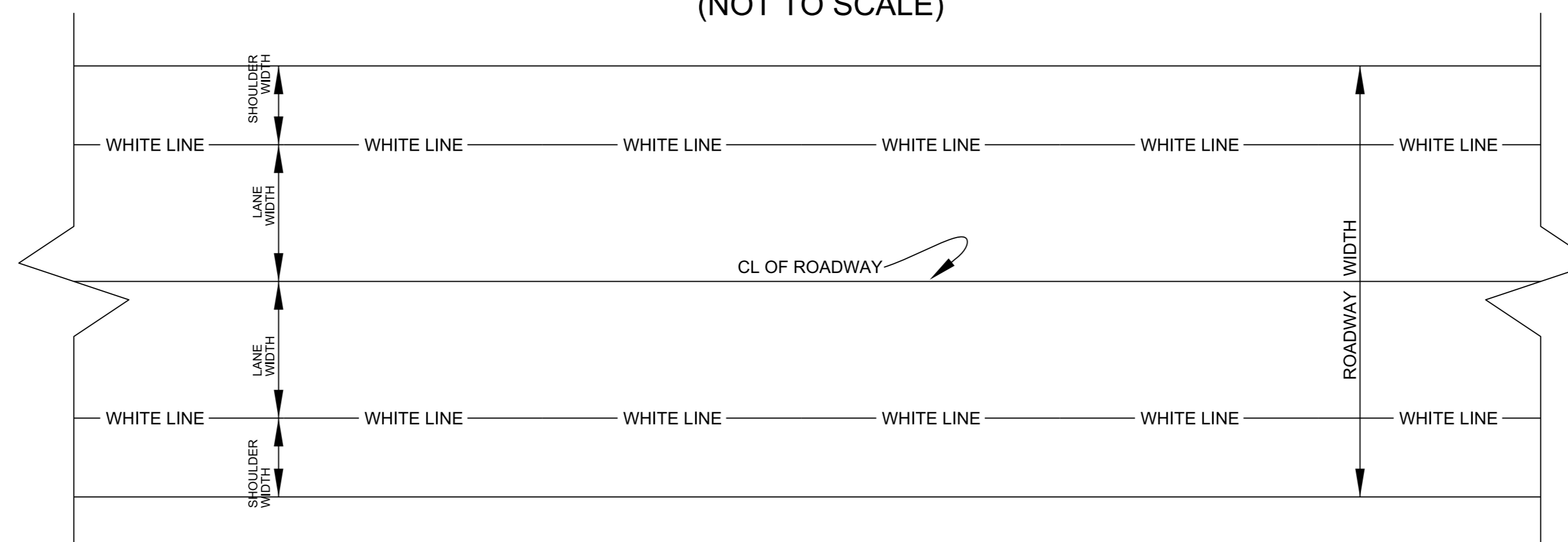
\* May vary due to pavement width

<b>TWO LANE - TWO WAY ROADWAY</b>		<b>50</b>
<b>MPH OR LESS</b>		
ROADWAY WIDTH	LANE WIDTH	SHOULDER WIDTH
18'	9' *	0'
20'	10' *	0'
22'	10'	1'
24'	10'	2'
26'	11'	2'
28'	11'	3'
32'	11'	5'

\* May vary due to pavement width

**SCHEMATIC OF ROADWAY**

(NOT TO SCALE)











## THERMOPLASTIC & PAINT QUANTITIES

											PROJECT NO.	SHEET NO.	TOTAL NO.						
											2021CPT.06.11.20431.1								
PROJECT NO	COUNTY	MAP NO	ROUTE	DESCRIPTION	TYP NO	LANES	LANE TYPE	LENGTH		WORK ZONE ADVANCE/GENERAL WARNING SIGNING	TEMPORARY TRAFFIC CONTROL	4" X 90 M WHITE THERMO	4" X 90 M YELLOW THERMO	YELLOW & YELLOW MARKERS					
								MI	FT						SF	LS	LF	LF	EA
2021CPT.06.11.20431.1	Harnett	1	SR 1446	FROM WAKE COUNTY LINE MP 0.00 TO SR 1141 MP 1.81	1	2	2WU	1.81	22	203	1.00	19,114	17,467	120					
<b>TOTAL FOR MAP NO. 1</b>							<b>1.81</b>			<b>203</b>	<b>1</b>	<b>19,114</b>	<b>17,467</b>	<b>120</b>					
2021CPT.06.11.20431.1	Harnett	2	SR 1448	FROM WAKE COUNTY LINE MP 0.00 TO SR 1441 MP 1.68	1	2	2WU	1.68	20	188		17,741	15,968	110					
<b>TOTAL FOR MAP NO. 2</b>							<b>1.68</b>			<b>188</b>		<b>17,741</b>	<b>15,968</b>	<b>110</b>					
2021CPT.06.11.20431.1	Harnett	3	SR 2126	FROM SR 1115 MP 0.00 TO SR 2134 MP 0.92	2,3	2	2WU	0.91	23.5	114									
<b>TOTAL FOR MAP NO. 3</b>							<b>0.91</b>			<b>114</b>									
2021CPT.06.11.20431.1	Harnett	4	SR 2134	FROM SR 2133 MP 0.00 TO END MAINTENANCE MP 0.14	2	2	2WU	0.14	20	16									
<b>TOTAL FOR MAP NO. 4</b>							<b>0.14</b>			<b>16</b>									
2021CPT.06.11.20431.1	Harnett	5	SR 2133	FROM SR 2131 MP 0.00 TO CUL-DE-SAC MP 0.13	2	2	2WU	0.13	20	15									
<b>TOTAL FOR MAP NO. 5</b>							<b>0.13</b>			<b>15</b>									
2021CPT.06.11.20431.1	Harnett	6	SR 2131	FROM SR 2126 MP 0.00 TO SR 2126 MP 0.30	2	2	2WU	0.3	20	34									
<b>TOTAL FOR MAP NO. 6</b>							<b>0.3</b>			<b>34</b>									
2021CPT.06.11.20431.1	Harnett	7	SR 2132	FROM SR 2131 MP 0.00 TO CUL-DE-SAC MP 0.03	2	2	2WU	0.03	20	3									
<b>TOTAL FOR MAP NO. 7</b>							<b>0.03</b>			<b>3</b>									
2021CPT.06.11.20431.1	Harnett	8	SR 2135	FROM SR 2126 MP 0.00 TO CUL-DE-SAC MP 0.06	2	2	2WU	0.06	20	7									
<b>TOTAL FOR MAP NO. 8</b>							<b>0.06</b>			<b>7</b>									
2021CPT.06.11.20431.1	Harnett	9	SR 2151	FROM SR 2126 MP 0.00 TO CUL-DE-SAC MP 0.07	2,4	2	2WU	0.07	22	15									
<b>TOTAL FOR MAP NO. 9</b>							<b>0.07</b>			<b>15</b>									
2021CPT.06.11.20431.1	Harnett	10	SR 2150	FROM SR 2126 MP 0.00 TO CUL-DE-SAC MP 0.21	4	2	2WU	0.21	24	24									
<b>TOTAL FOR MAP NO. 10</b>							<b>0.21</b>			<b>24</b>									
2021CPT.06.11.20431.1	Harnett	11	SR 2127	FROM SR 1115 MP 0.00 TO SR 2126 MP 0.38	2	2	2WU	0.37	20	41									
<b>TOTAL FOR MAP NO. 11</b>							<b>0.37</b>			<b>41</b>									
2021CPT.06.11.20431.1	Harnett	12	SR 2128	FROM SR 2127 MP 0.00 TO CUL-DE-SAC MP 0.11	2	2	2WU	0.11	20	12									
<b>TOTAL FOR MAP NO. 12</b>							<b>0.11</b>			<b>12</b>									
2021CPT.06.11.20431.1	Harnett	13	SR 2129	FROM CUL-DE-SAC MP 0.00 TO CUL-DE-SAC MP 0.44	2,4	2	2WU	0.44	22	67									
<b>TOTAL FOR MAP NO. 13</b>							<b>0.44</b>			<b>67</b>									
2021CPT.06.11.20431.1	Harnett	14	SR 2130	FROM SR 2129 MP 0.00 TO CUL-DE-SAC MP 0.14	2	2	2WU	0.14	20	16									
<b>TOTAL FOR MAP NO. 14</b>							<b>0.14</b>			<b>16</b>									
2021CPT.06.11.20431.1	Harnett	15	SR 2148	FROM SR 2126 MP 0.00 TO SR 2144 MP 0.14	4	2	2WU	0.14	30	16									
<b>TOTAL FOR MAP NO. 15</b>							<b>0.14</b>			<b>16</b>									
2021CPT.06.11.20431.1	Harnett	16	SR 2149	FROM SR 2148 MP 0.00 TO CUL-DE-SAC MP 0.16	4	2	2WU	0.16	24	18									
<b>TOTAL FOR MAP NO. 16</b>							<b>0.16</b>			<b>18</b>									
2021CPT.06.11.20431.1	Harnett	17	SR 2144	FROM SR 2126 MP 0.00 TO DEAD END MP 0.78	4	2	2WU	0.78	30	87									
<b>TOTAL FOR MAP NO. 17</b>							<b>0.78</b>			<b>87</b>									
2021CPT.06.11.20431.1	Harnett	18	SR 2145	FROM SR 2144 MP 0.00 TO DEAD END MP 0.14	4	2	2WU	0.14	24	16									
<b>TOTAL FOR MAP NO. 18</b>							<b>0.14</b>			<b>16</b>									
2021CPT.06.11.20431.1	Harnett	19	SR 2146	FROM SR 2144 MP 0.00 TO CUL-DE-SAC MP 0.04	4	2	2WU	0.04	24	4									
<b>TOTAL FOR MAP NO. 19</b>							<b>0.04</b>			<b>4</b>									
2021CPT.06.11.20431.1	Harnett	20	SR 2147	FROM SR 2144 MP 0.00 TO CUL-DE-SAC MP 0.08	4	2	2WU	0.08	24	9									
<b>TOTAL FOR MAP NO. 20</b>							<b>0.08</b>			<b>9</b>									
2021CPT.06.11.20431.1	Harnett	21	SR 2177	FROM SR 1141 MP 0.00 TO CUL-DE-SAC MP 0.17	4	2	2WU	0.17	30	19									
<b>TOTAL FOR MAP NO. 21</b>							<b>0.17</b>			<b>19</b>									
2021CPT.06.11.20431.1	Harnett	22	SR 2178	FROM SR 1141 MP 0.00 TO CUL-DE-SAC MP 0.17	4	2	2WU	0.17	30	19									
<b>TOTAL FOR MAP NO. 22</b>							<b>0.17</b>			<b>19</b>									
2021CPT.06.11.20431.1	Harnett	23	SR 2517	FROM SR 1141 MP 0.00 TO SR 2521 MP 0.40	4	2	2WU	0.39	30	44									
<b>TOTAL FOR MAP NO. 23</b>							<b>0.39</b>			<b>44</b>									

## THERMOPLASTIC & PAINT QUANTITIES

											PROJECT NO.	SHEET NO.	TOTAL NO.
											2021CPT.06.11.20431.1		
2021CPT.06.11.20431.1	Harnett	24	SR 2518	FROM SR 2517 MP 0.00 TO CUL-DE-SAC MP 0.19	4	2	2WU	0.19	30	21			
<b>TOTAL FOR MAP NO. 24</b>								<b>0.19</b>		<b>21</b>			
2021CPT.06.11.20431.1	Harnett	25	SR 2519	FROM SR 2517 MP 0.00 TO SR 2520 MP 0.26	4	2	2WU	0.25	30	28			
<b>TOTAL FOR MAP NO. 25</b>								<b>0.25</b>		<b>28</b>			
2021CPT.06.11.20431.1	Harnett	26	SR 2521	FROM SR 2520 MP 0.00 TO SR 2520 MP 0.30	4	2	2WU	0.3	30	34			
<b>TOTAL FOR MAP NO. 26</b>								<b>0.3</b>		<b>34</b>			
2021CPT.06.11.20431.1	Harnett	27	SR 2520	FROM DEAD END MP 0.00 TO CUL-DE-SAC MP 0.37	4	2	2WU	0.37	30	41			
<b>TOTAL FOR MAP NO. 27</b>								<b>0.37</b>		<b>41</b>			
2021CPT.06.11.20431.1	Harnett	28	SR 2176	FROM SR 1141 PNMT JT MP 0.01 TO SR 1141 PVMT JT MP 1.09	2.4	2	2WU	1.08	25	181			
<b>TOTAL FOR MAP NO. 28</b>								<b>1.08</b>		<b>181</b>			
2021CPT.06.11.20431.1	Harnett	29	SR 2157	FROM SR 1141 PNMT JT MP 0.01 TO SR 2178 MP 0.49	2	2	2WU	0.48	20	54			
<b>TOTAL FOR MAP NO. 29</b>								<b>0.48</b>		<b>54</b>			
2021CPT.06.11.20431.1	Harnett	30	SR 2171	FROM SR 1115 MP 0.00 TO CUL-DE-SAC MP 0.20	2.5	2	2WU	0.2	18	23			
<b>TOTAL FOR MAP NO. 30</b>								<b>0.2</b>		<b>23</b>			
2021CPT.06.11.20431.1	Harnett	31	SR 2434	FROM SR 1115 MP 0.00 TO SR 2435 MP 0.36	4	2	2WU	0.35	37	39			
<b>TOTAL FOR MAP NO. 31</b>								<b>0.35</b>		<b>39</b>			
2021CPT.06.11.20431.1	Harnett	32	SR 2436	FROM SR 2435 MP 0.00 TO SR 2435 MP 0.23	4	2	2WU	0.23	30	26			
<b>TOTAL FOR MAP NO. 32</b>								<b>0.23</b>		<b>26</b>			
2021CPT.06.11.20431.1	Harnett	33	SR 2435	FROM CUL-DE-SAC MP 0.00 TO SR 2434 MP 0.69	4	2	2WU	0.69	30	77			
<b>TOTAL FOR MAP NO. 33</b>								<b>0.69</b>		<b>77</b>			
2021CPT.06.11.20431.1	Harnett	34	SR 2437	FROM SR 2434 MP 0.00 TO CUL-DE-SAC MP 0.14	4	2	2WU	0.14	30	16			
<b>TOTAL FOR MAP NO. 34</b>								<b>0.14</b>		<b>16</b>			
2021CPT.06.11.20431.1	Harnett	35	SR 2438	FROM SR 2434 MP 0.00 TO CUL-DE-SAC MP 0.09	4	2	2WU	0.09	30	10			
<b>TOTAL FOR MAP NO. 35</b>								<b>0.09</b>		<b>10</b>			
2021CPT.06.11.20431.1	Harnett	36	SR 2439	FROM SR 2438 MP 0.00 TO SR 2445 MP 0.67	4	2	2WU	0.67	30	75			
<b>TOTAL FOR MAP NO. 36</b>								<b>0.67</b>		<b>75</b>			
2021CPT.06.11.20431.1	Harnett	37	SR 2445	FROM CUL-DE-SAC MP 0.00 TO CUL-DE-SAC MP 0.25	4	2	2WU	0.25	30	28			
<b>TOTAL FOR MAP NO. 37</b>								<b>0.25</b>		<b>28</b>			
2021CPT.06.11.20431.1	Harnett	38	SR 2444	FROM SR 2445 MP 0.00 TO CUL-DE-SAC MP 0.06	4	2	2WU	0.06	27	7			
<b>TOTAL FOR MAP NO. 38</b>								<b>0.06</b>		<b>7</b>			
2021CPT.06.11.20431.1	Harnett	39	SR 2442	FROM SR 2439 MP 0.00 TO CUL-DE-SAC MP 0.08	4	2	2WU	0.08	27	9			
<b>TOTAL FOR MAP NO. 39</b>								<b>0.08</b>		<b>9</b>			
2021CPT.06.11.20431.1	Harnett	40	SR 2441	FROM SR 2439 MP 0.00 TO DEAD END MP 0.09	4	2	2WU	0.09	30	10			
<b>TOTAL FOR MAP NO. 40</b>								<b>0.09</b>		<b>10</b>			
2021CPT.06.11.20431.1	Harnett	41	SR 2446	FROM SR 2439 MP 0.00 TO CUL-DE-SAC MP 0.07	4	2	2WU	0.07	27	8			
<b>TOTAL FOR MAP NO. 41</b>								<b>0.07</b>		<b>8</b>			
2021CPT.06.11.20431.1	Harnett	42	SR 2440	FROM SR 2439 MP 0.00 TO CUL-DE-SAC MP 0.08	4	2	2WU	0.08	27	9			
<b>TOTAL FOR MAP NO. 42</b>								<b>0.08</b>		<b>9</b>			
2021CPT.06.11.20431.1	Harnett	43	SR 2443	FROM SR 2439 MP 0.00 TO CUL-DE-SAC MP 0.05	4	2	2WU	0.05	28	6			
<b>TOTAL FOR MAP NO. 43</b>								<b>0.05</b>		<b>6</b>			
2021CPT.06.11.20431.1	Harnett	44	SR 2167	FROM SR 1115 MP 0.00 TO SR 2407 MP 0.43	2.5	2	2WU	0.42	20	48			
<b>TOTAL FOR MAP NO. 44</b>								<b>0.42</b>		<b>48</b>			
2021CPT.06.11.20431.1	Harnett	45	SR 2168	FROM SR 2167 MP 0.00 TO CUL-DE-SAC MP 0.09	2	2	2WU	0.09	18	10			
<b>TOTAL FOR MAP NO. 45</b>								<b>0.09</b>		<b>10</b>			
2021CPT.06.11.20431.1	Harnett	46	SR 2169	FROM SR 2167 MP 0.00 TO CUL-DE-SAC MP 0.09	2	2	2WU	0.09	18	10			
<b>TOTAL FOR MAP NO. 46</b>								<b>0.09</b>		<b>10</b>			
2021CPT.06.11.20431.1	Harnett	47	SR 2403	FROM SR 2167 MP 0.00 TO CUL-DE-SAC MP 0.50	2	2	2WU	0.5	20	56			
<b>TOTAL FOR MAP NO. 47</b>								<b>0.5</b>		<b>56</b>			
2021CPT.06.11.20431.1	Harnett	48	SR 2406	FROM SR 2403 MP 0.00 TO CUL-DE-SAC MP 0.05	2	2	2WU	0.05	18	6			
<b>TOTAL FOR MAP NO. 48</b>								<b>0.05</b>		<b>6</b>			
2021CPT.06.11.20431.1	Harnett	49	SR 2405	FROM SR 2403 MP 0.00 TO CUL-DE-SAC MP 0.07	2	2	2WU	0.07	18	8			
<b>TOTAL FOR MAP NO. 49</b>								<b>0.07</b>		<b>8</b>			

## THERMOPLASTIC & PAINT QUANTITIES

											PROJECT NO.	SHEET NO.	TOTAL NO.
											2021CPT.06.11.20431.1		
2021CPT.06.11.20431.1	Harnett	50	SR 2404	FROM SR 2403 MP 0.00 TO SR 2167 MP 0.22	2	2	2WU	0.21	20	24			
<b>TOTAL FOR MAP NO. 50</b>								<b>0.21</b>		<b>24</b>			
2021CPT.06.11.20431.1	Harnett	51	SR 2410	FROM SR 2167 MP 0.00 TO CUL-DE-SAC MP 0.10	2	2	2WU	0.1	20	11			
<b>TOTAL FOR MAP NO. 51</b>								<b>0.1</b>		<b>11</b>			
2021CPT.06.11.20431.1	Harnett	52	SR 2407	FROM SR 1115 MP 0.00 TO CUL-DE-SAC MP 0.31	2	2	2WU	0.31	21	35			
<b>TOTAL FOR MAP NO. 52</b>								<b>0.31</b>		<b>35</b>			
2021CPT.06.11.20431.1	Harnett	53	SR 2409	FROM SR 2407 MP 0.00 TO CUL-DE-SAC MP 0.09	2	2	2WU	0.09	19	10			
<b>TOTAL FOR MAP NO. 53</b>								<b>0.09</b>		<b>10</b>			
2021CPT.06.11.20431.1	Harnett	54	SR 2408	FROM SR 2407 MP 0.00 TO CUL-DE-SAC MP 0.08	2	2	2WU	0.08	19	9			
<b>TOTAL FOR MAP NO. 54</b>								<b>0.08</b>		<b>9</b>			
2021CPT.06.11.20431.1	Harnett	55	SR 2185	FROM SR 1115 MP 0.00 TO SR 1114 MP 0.97	2	2	2WU	0.97	20	109			
<b>TOTAL FOR MAP NO. 55</b>								<b>0.97</b>		<b>109</b>			
2021CPT.06.11.20431.1	Harnett	56	SR 2195	FROM SR 2185 MP 0.00 TO CUL-DE-SAC MP 0.15	2	2	2WU	0.15	20	17			
<b>TOTAL FOR MAP NO. 56</b>								<b>0.15</b>		<b>17</b>			
2021CPT.06.11.20431.1	Harnett	57	SR 2186	FROM SR 2185 MP 0.00 TO SR 2185 MP 0.32	2	2	2WU	0.32	20	36			
<b>TOTAL FOR MAP NO. 57</b>								<b>0.32</b>		<b>36</b>			
2021CPT.06.11.20431.1	Harnett	58	SR 2187	FROM SR 2186 MP 0.00 TO CUL-DE-SAC MP 0.07	2	2	2WU	0.07	20	8			
<b>TOTAL FOR MAP NO. 58</b>								<b>0.07</b>		<b>8</b>			
2021CPT.06.11.20431.1	Harnett	59	SR 2188	FROM SR 2186 MP 0.00 TO CUL-DE-SAC MP 0.06	2	2	2WU	0.06	20	7			
<b>TOTAL FOR MAP NO. 59</b>								<b>0.06</b>		<b>7</b>			
2021CPT.06.11.20431.1	Harnett	60	SR 2189	FROM SR 2185 MP 0.00 TO CUL-DE-SAC MP 0.21	2	2	2WU	0.21	20	24			
<b>TOTAL FOR MAP NO. 60</b>								<b>0.21</b>		<b>24</b>			
2021CPT.06.11.20431.1	Harnett	61	SR 2190	FROM SR 2185 MP 0.00 TO CUL-DE-SAC MP 0.07	2	2	2WU	0.07	20	8			
<b>TOTAL FOR MAP NO. 61</b>								<b>0.07</b>		<b>8</b>			
2021CPT.06.11.20431.1	Harnett	62	SR 2191	FROM SR 2192 MP 0.00 TO CUL-DE-SAC MP 0.23	2	2	2WU	0.22	20	25			
<b>TOTAL FOR MAP NO. 62</b>								<b>0.22</b>		<b>25</b>			
2021CPT.06.11.20431.1	Harnett	63	SR 2192	FROM CUL-DE-SAC MP 0.00 TO CUL-DE-SAC MP 0.23	2	2	2WU	0.22	20	25			
<b>TOTAL FOR MAP NO. 63</b>								<b>0.22</b>		<b>25</b>			
2021CPT.06.11.20431.1	Harnett	64	SR 2193	FROM SR 2191 MP 0.00 TO CUL-DE-SAC MP 0.30	2	2	2WU	0.3	20	34			
<b>TOTAL FOR MAP NO. 64</b>								<b>0.3</b>		<b>34</b>			
2021CPT.06.11.20431.1	Harnett	65	SR 2194	FROM SR 2185 MP 0.00 TO CUL-DE-SAC MP 0.06	4	2	2WU	0.06	24	7			
<b>TOTAL FOR MAP NO. 65</b>								<b>0.06</b>		<b>7</b>			
2021CPT.06.11.20431.1	Harnett	66	SR 2179	FROM SR 1141 MP 0.00 TO SR 2179 MP 0.97	4	2	2WU	0.96	30	108			
<b>TOTAL FOR MAP NO. 66</b>								<b>0.96</b>		<b>108</b>			
2021CPT.06.11.20431.1	Harnett	67	SR 2180	FROM SR 2179 MP 0.00 TO CUL-DE-SAC MP 0.05	4	2	2WU	0.05	24	6			
<b>TOTAL FOR MAP NO. 67</b>								<b>0.05</b>		<b>6</b>			
2021CPT.06.11.20431.1	Harnett	68	SR 2181	FROM SR 2179 MP 0.00 TO CUL-DE-SAC MP 0.24	4	2	2WU	0.23	24	26			
<b>TOTAL FOR MAP NO. 68</b>								<b>0.23</b>		<b>26</b>			
2021CPT.06.11.20431.1	Harnett	69	SR 1582	FROM SR 1504 MP 0.00 TO SR 1504 MP 0.36	2	2	2WU	0.36	18	40			
<b>TOTAL FOR MAP NO. 69</b>								<b>0.36</b>		<b>40</b>			
2021CPT.06.11.20431.1	Harnett	70	SR 1583	FROM SR 1504 MP 0.00 TO CUL-DE-SAC MP 0.21	2	2	2WU	0.21	18	24			
<b>TOTAL FOR MAP NO. 70</b>								<b>0.21</b>		<b>24</b>			
2021CPT.06.11.20431.1	Harnett	71	SR 1480	FROM SR 1446 MP 0.00 TO CUL-DE-SAC MP 0.24	2	2	2WU	0.24	18	27			
<b>TOTAL FOR MAP NO. 71</b>								<b>0.24</b>		<b>27</b>			
2021CPT.06.11.20431.1	Harnett	72	SR 2162	FROM SR 1114 MP 0.00 TO CUL-DE-SAC MP 0.19	4	2	2WU	0.19	23	21			
<b>TOTAL FOR MAP NO. 72</b>								<b>0.19</b>		<b>21</b>			
2021CPT.06.11.20431.1	Harnett	73	SR 2163	FROM SR 2162 MP 0.00 TO CUL-DE-SAC MP 0.07	4	2	2WU	0.07	21	8			
<b>TOTAL FOR MAP NO. 73</b>								<b>0.07</b>		<b>8</b>			
2021CPT.06.11.20431.1	Harnett	74	SR 2197	FROM SR 1114 MP 0.00 TO SR 2198 MP 0.08	2	2	2WU	0.08	21	9			
<b>TOTAL FOR MAP NO. 74</b>								<b>0.08</b>		<b>9</b>			
2021CPT.06.11.20431.1	Harnett	75	SR 2198	FROM CUL-DE-SAC MP 0.00 TO CUL-DE-SAC MP 0.23	2	2	2WU	0.23	21	26			
<b>TOTAL FOR MAP NO. 75</b>								<b>0.23</b>		<b>26</b>			
2021CPT.06.11.20431.1	Harnett	76	SR 2161	FROM CUL-DE-SAC MP 0.00 TO CUL-DE-SAC MP 0.19	4	2	2WU	0.17	22	23			

## THERMOPLASTIC & PAINT QUANTITIES

										PROJECT NO.	SHEET NO.	TOTAL NO.
										2021CPT.06.11.20431.1		
<b>TOTAL FOR MAP NO. 76</b>										<b>0.17</b>		<b>23</b>
2021CPT.06.11.20431.1	Harnett	77	SR 2199	FROM SR 2161 MP 0.00 TO CUL-DE-SAC MP 0.07	4	2	2WU	0.07	22	8		
<b>TOTAL FOR MAP NO. 77</b>										<b>0.07</b>		<b>8</b>
2021CPT.06.11.20431.1	Harnett	78	SR 2114	FROM SR 1141 MP 0.00 TO DEAD END MP 0.56	2	2	2WU	0.55	20	62		
<b>TOTAL FOR MAP NO. 78</b>										<b>0.55</b>		<b>62</b>
2021CPT.06.11.20431.1	Harnett	79	SR 1328	FROM NC HWY 27 MP 0.39 TO SR 1330 MP 0.43	2	2	2WU	0.04	21	4		
<b>TOTAL FOR MAP NO. 79</b>										<b>0.04</b>		<b>4</b>
2021CPT.06.11.20431.1	Harnett	80	SR 1330	FROM SR 1331 MP 0.00 TO SR 1330 PVMT JT MP 0.96	2	2	2WU	0.96	20	108		
<b>TOTAL FOR MAP NO. 80</b>										<b>0.96</b>		<b>108</b>
2021CPT.06.11.20431.1	Harnett	81	SR 1331	FROM SR 1330 MP 0.00 TO SR 1330 MP 0.10	2	2	2WU	0.1	20	11		
<b>TOTAL FOR MAP NO. 81</b>										<b>0.1</b>		<b>11</b>
2021CPT.06.11.20431.1	Harnett	82	SR 1192	FROM NC HWY 24 MP 0.00 TO CUL-DE-SAC MP 0.28	4	2	2WU	0.28	34	42		
<b>TOTAL FOR MAP NO. 82</b>										<b>0.28</b>		<b>42</b>
2021CPT.06.11.20431.1	Harnett	83	SR 1194	FROM SR 1192 MP 0.00 TO CUL-DE-SAC MP 0.09	4	2	2WU	0.09	30	10		
<b>TOTAL FOR MAP NO. 83</b>										<b>0.09</b>		<b>10</b>
2021CPT.06.11.20431.1	Harnett	84	SR 2116	FROM SR 1193 MP 0.00 TO CUL-DE-SAC MP 0.48	4	2	2WU	0.48	30	54		
<b>TOTAL FOR MAP NO. 84</b>										<b>0.48</b>		<b>54</b>
2021CPT.06.11.20431.1	Harnett	85	SR 2118	FROM SR 2116 MP 0.00 TO CUL-DE-SAC MP 0.05	4	2	2WU	0.05	30	6		
<b>TOTAL FOR MAP NO. 85</b>										<b>0.05</b>		<b>6</b>
2021CPT.06.11.20431.1	Harnett	86	SR 2117	FROM SR 2116 MP 0.00 TO CUL-DE-SAC MP 0.08	4	2	2WU	0.08	30	9		
<b>TOTAL FOR MAP NO. 86</b>										<b>0.08</b>		<b>9</b>
2021CPT.06.11.20431.1	Harnett	87	SR 2115	FROM NC HWY 24 MP 0.00 TO SR 2116 MP 0.07	4	2	2WU	0.06	30	7		
<b>TOTAL FOR MAP NO. 87</b>										<b>0.06</b>		<b>7</b>
2021CPT.06.11.20431.1	Harnett	88	SR 1195	FROM SR 1193 MP 0.00 TO CUL-DE-SAC MP 0.06	4	2	2WU	0.06	29	7		
<b>TOTAL FOR MAP NO. 88</b>										<b>0.06</b>		<b>7</b>
2021CPT.06.11.20431.1	Harnett	89	SR 2224	FROM SR 1193 MP 0.00 TO CUL-DE-SAC MP 0.19	4	2	2WU	0.19	30	21		
<b>TOTAL FOR MAP NO. 89</b>										<b>0.19</b>		<b>21</b>
2021CPT.06.11.20431.1	Harnett	90	SR 2225	FROM SR 1193 MP 0.00 TO CUL-DE-SAC MP 0.10	4	2	2WU	0.1	30	11		
<b>TOTAL FOR MAP NO. 90</b>										<b>0.1</b>		<b>11</b>
2021CPT.06.11.20431.1	Harnett	91	SR 2142	FROM SR 2119 MP 0.00 TO CUL-DE-SAC MP 0.10	4	2	2WU	0.1	30	11		
<b>TOTAL FOR MAP NO. 91</b>										<b>0.1</b>		<b>11</b>
2021CPT.06.11.20431.1	Harnett	92	SR 2125	FROM SR 1193 MP 0.00 TO CUL-DE-SAC MP 0.06	4	2	2WU	0.06	30	7		
<b>TOTAL FOR MAP NO. 92</b>										<b>0.06</b>		<b>7</b>
2021CPT.06.11.20431.1	Harnett	93	SR 2124	FROM SR 1193 MP 0.00 TO CUL-DE-SAC MP 0.06	4	2	2WU	0.06	30	7		
<b>TOTAL FOR MAP NO. 93</b>										<b>0.06</b>		<b>7</b>
2021CPT.06.11.20431.1	Harnett	94	SR 2143	FROM SR 1193 MP 0.00 TO CUL-DE-SAC MP 0.15	4	2	2WU	0.15	30	17		
<b>TOTAL FOR MAP NO. 94</b>										<b>0.15</b>		<b>17</b>
2021CPT.06.11.20431.1	Harnett	95	SR 2123	FROM SR 1193 MP 0.00 TO CUL-DE-SAC MP 0.16	4	2	2WU	0.16	30	18		
<b>TOTAL FOR MAP NO. 95</b>										<b>0.16</b>		<b>18</b>
2021CPT.06.11.20431.1	Harnett	96	SR 2120	FROM SR 1193 MP 0.00 TO SR 2119 MP 0.33	4	2	2WU	0.32	30	36		
<b>TOTAL FOR MAP NO. 96</b>										<b>0.32</b>		<b>36</b>
2021CPT.06.11.20431.1	Harnett	97	SR 2121	FROM SR 2120 MP 0.00 TO CUL-DE-SAC MP 0.04	4	2	2WU	0.04	30	4		
<b>TOTAL FOR MAP NO. 97</b>										<b>0.04</b>		<b>4</b>
2021CPT.06.11.20431.1	Harnett	98	SR 2141	FROM SR 2119 MP 0.00 TO CUL-DE-SAC MP 0.10	4	2	2WU	0.1	30	11		
<b>TOTAL FOR MAP NO. 98</b>										<b>0.1</b>		<b>11</b>
2021CPT.06.11.20431.1	Harnett	99	SR 2122	FROM SR 2119 MP 0.00 TO CUL-DE-SAC MP 0.08	4	2	2WU	0.08	30	9		
<b>TOTAL FOR MAP NO. 99</b>										<b>0.08</b>		<b>9</b>
2021CPT.06.11.20431.1	Harnett	100	SR 2119	FROM CUL-DE-SAC MP 0.00 TO SR 1193 MP 0.84	4	2	2WU	0.84	30	94		
<b>TOTAL FOR MAP NO. 100</b>										<b>0.84</b>		<b>94</b>
2021CPT.06.11.20431.1	Harnett	101	SR 1193	FROM DEAD END MP 0.00 TO SR 2119 MP 1.53	4	2	2WU	1.51	38	291		
<b>TOTAL FOR MAP NO. 101</b>										<b>1.51</b>		<b>291</b>
2021CPT.06.11.20431.1	Harnett	102	SR 1191	FROM SR 1120 MP 0.00 TO CUL-DE-SAC MP 0.10	4	2	2WU	0.1	24	11		
<b>TOTAL FOR MAP NO. 102</b>										<b>0.1</b>		<b>11</b>

## THERMOPLASTIC & PAINT QUANTITIES

											PROJECT NO.	SHEET NO.	TOTAL NO.	
											2021CPT.06.11.20431.1			
2021CPT.06.11.20431.1	Harnett	103	SR 1190	FROM SR 1191 MP 0.00 TO CUL-DE-SAC MP 0.09	4	2	2WU	0.09	24	10				
<b>TOTAL FOR MAP NO. 103</b>								<b>0.09</b>		<b>10</b>				
2021CPT.06.11.20431.1	Harnett	104	SR 1181	FROM SR 1120 MP 0.00 TO DEAD END MP 0.86	4	2	2WU	0.86	30	96				
<b>TOTAL FOR MAP NO. 104</b>								<b>0.86</b>		<b>96</b>				
2021CPT.06.11.20431.1	Harnett	105	SR 1182	FROM SR 1181 MP 0.00 TO CUL-DE-SAC MP 0.07	4	2	2WU	0.07	30	8				
<b>TOTAL FOR MAP NO. 105</b>								<b>0.07</b>		<b>8</b>				
2021CPT.06.11.20431.1	Harnett	106	SR 1183	FROM SR 1181 MP 0.00 TO CUL-DE-SAC MP 0.07	4	2	2WU	0.07	30	8				
<b>TOTAL FOR MAP NO. 106</b>								<b>0.07</b>		<b>8</b>				
2021CPT.06.11.20431.1	Harnett	107	SR 1185	FROM SR 1181 MP 0.00 TO CUL-DE-SAC MP 0.07	4	2	2WU	0.07	30	8				
<b>TOTAL FOR MAP NO. 107</b>								<b>0.07</b>		<b>8</b>				
2021CPT.06.11.20431.1	Harnett	108	SR 1186	FROM SR 1181 MP 0.00 TO CUL-DE-SAC MP 0.07	4	2	2WU	0.07	30	8				
<b>TOTAL FOR MAP NO. 108</b>								<b>0.07</b>		<b>8</b>				
2021CPT.06.11.20431.1	Harnett	109	SR 2164	FROM SR 1181 MP 0.00 TO CUL-DE-SAC MP 0.07	4	2	2WU	0.07	30	8				
<b>TOTAL FOR MAP NO. 109</b>								<b>0.07</b>		<b>8</b>				
2021CPT.06.11.20431.1	Harnett	110	SR 2165	FROM SR 1181 MP 0.00 TO CUL-DE-SAC MP 0.36	4	2	2WU	0.36	30	40				
<b>TOTAL FOR MAP NO. 110</b>								<b>0.36</b>		<b>40</b>				
2021CPT.06.11.20431.1	Harnett	111	SR 2166	FROM SR 1181 MP 0.00 TO SR 2165 MP 0.14	4	2	2WU	0.13	30	15				
<b>TOTAL FOR MAP NO. 111</b>								<b>0.13</b>		<b>15</b>				
2021CPT.06.11.20431.1	Harnett	112	SR 2471	FROM SR 2470 MP 0.00 TO CUL-DE-SAC MP 0.09	4	2	2WU	0.09	30	10				
<b>TOTAL FOR MAP NO. 112</b>								<b>0.09</b>		<b>10</b>				
<b>TOTAL FOR PROJ NO. 2021CPT.06.11.20431.1</b>								<b>30.15</b>		<b>3,621</b>	<b>1</b>	<b>36,855</b>	<b>33,435</b>	<b>230</b>
											<b>70,290</b>			
<b>GRAND TOTAL</b>								<b>30.15</b>		<b>3,621</b>	<b>1</b>	<b>36,855</b>	<b>33,435</b>	<b>230</b>
											<b>70,290</b>			