

STATE OF NORTH CAROLINA
DEPARTMENT OF TRANSPORTATION
HIGHWAY DIVISION 6

PLANS
Let Date: March 3, 2021

CONTRACT ID: DF00277

TIP NO.: -----

FEDERAL AID NO.: STATE FUNDED

WBS ELEMENT NO.: 2021CPT.06.10.20432.1

ROUTE NO.: VARIOUS SR

LOCATION: VARIOUS

COUNTY: HARNETT

TYPE OF WORK: ASPHALT SURFACE TREATMENT – DOUBLE SEALS

LENGTH OF PROJECT: 34.158 MILES

**This electronic collection of documents is provided
for the convenience of the user
and is Not a Certified Document –**

**The documents contained herein were originally issued
and sealed by the individuals whose names and license
numbers appear on each page, on the dates appearing
with their signature on that page.**

**This file or an individual page
shall not be considered a certified document.**

Harnett County BST Treatments Contract DF00277

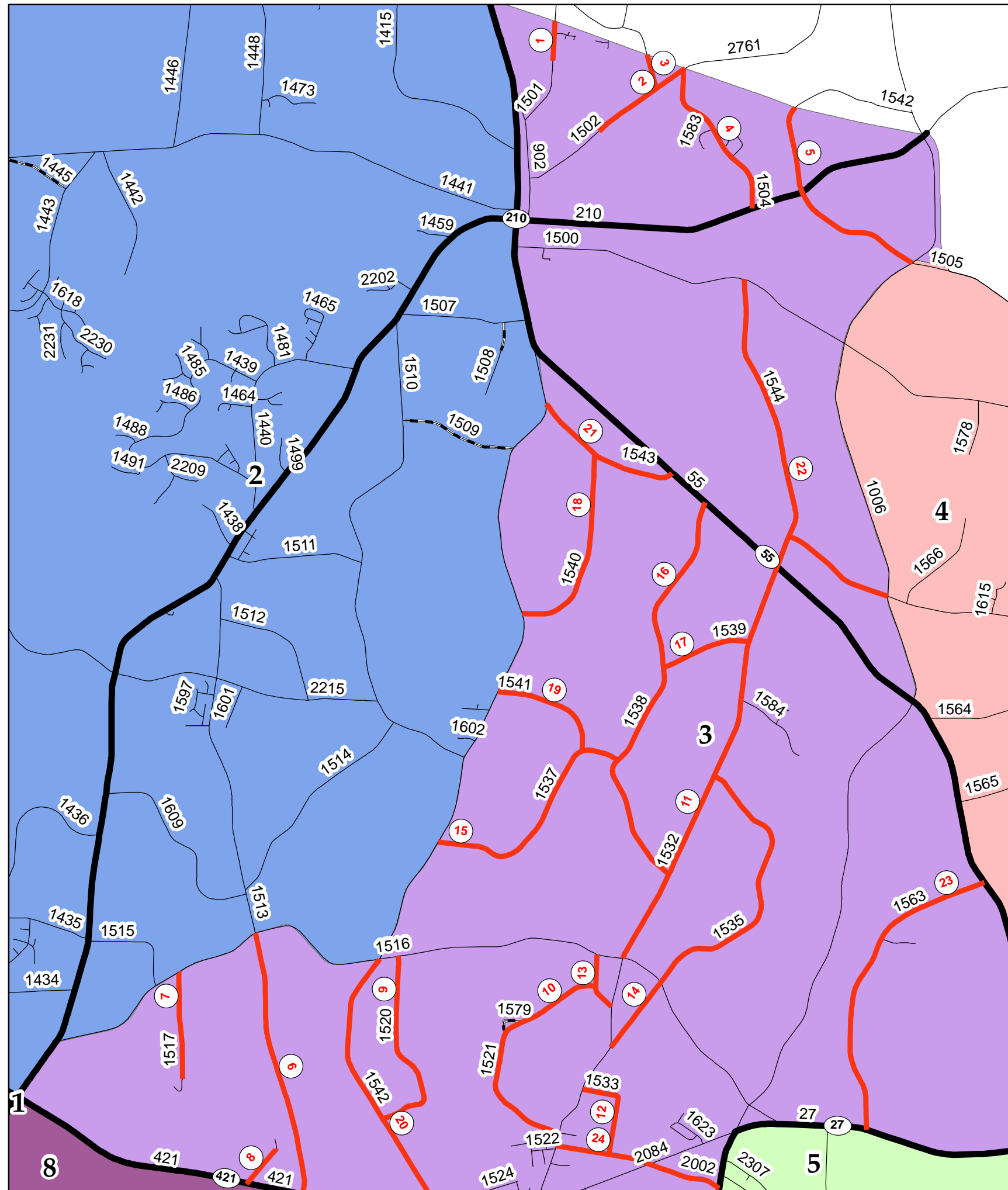
Date: 1/19/2021
 Contract #: DF00XXX
 WBS: 2021CPT.06.10.20432.1
 Division : 6
 County: Harnett
 Description: AST - Double Seals

Legend

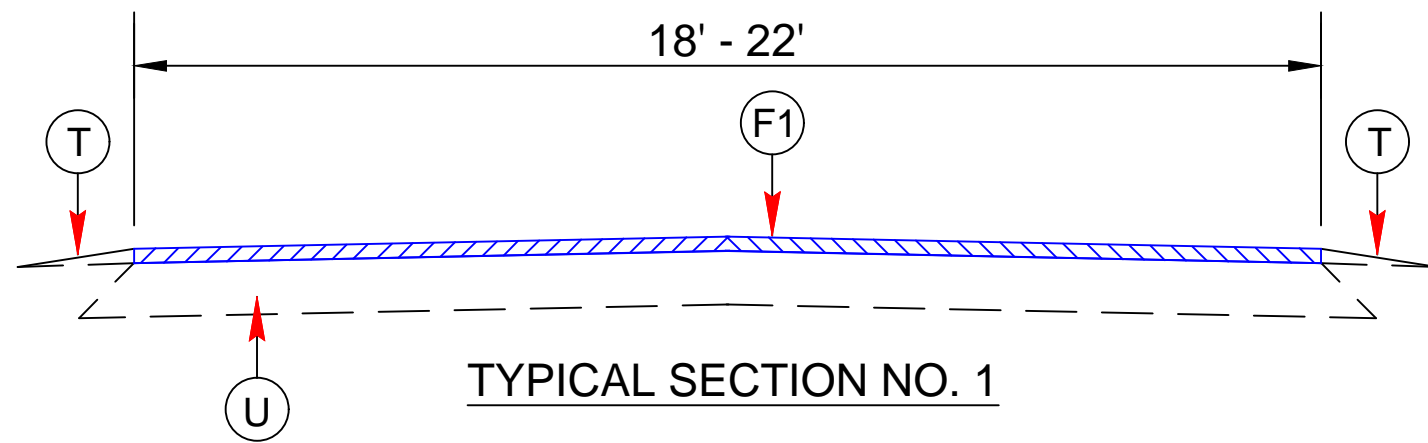
— Double Seal

— Harnett_Primary

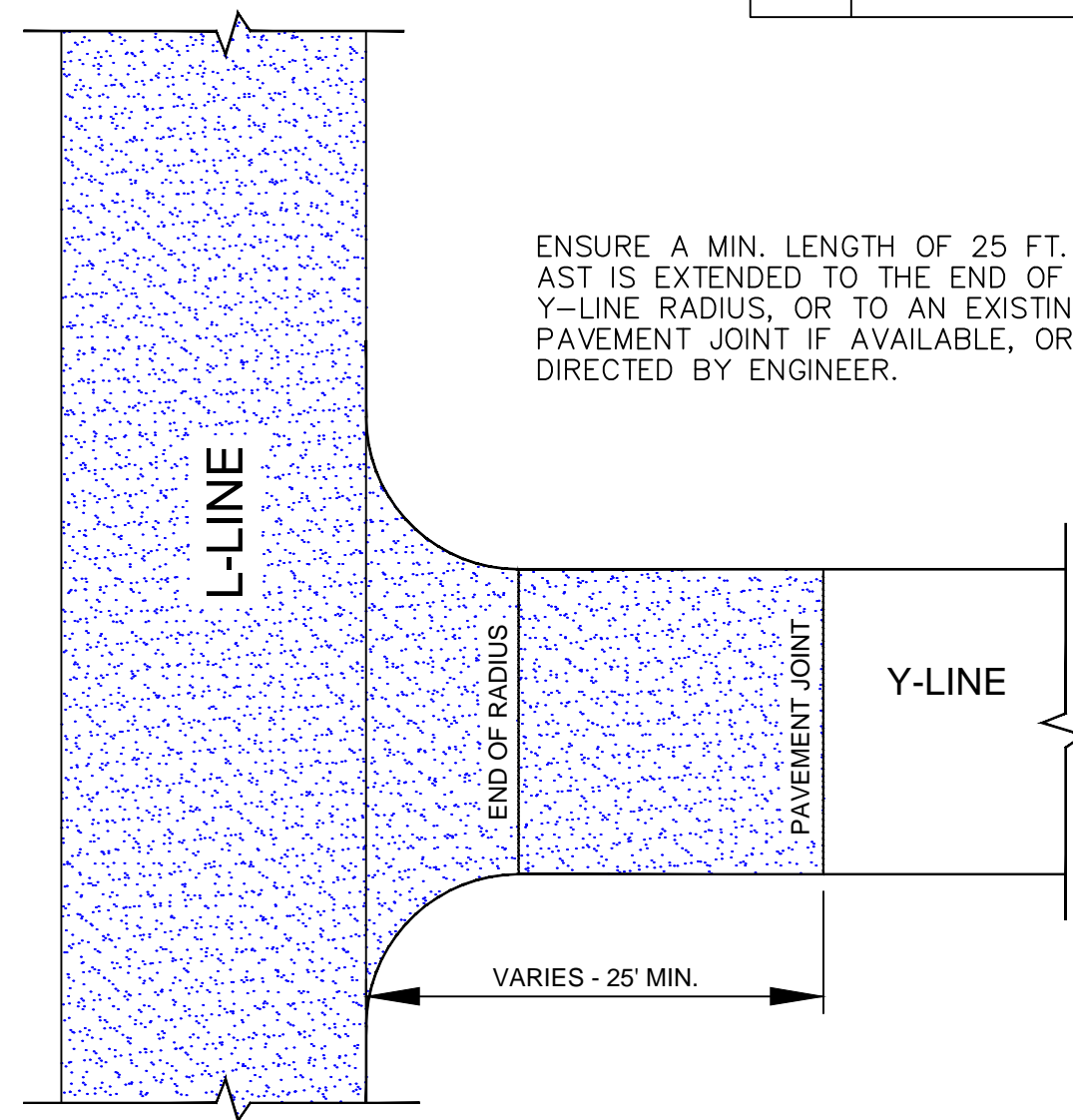
Map	Route	From	Begin MP	To	End MP	CL Length (Mile)	Width (Ft.)	Yardage + 10% (SY)	Emulsion (GAL)	WZ Signs (SF)	Treatment
1	SR 1501	WAKE COUNT	0.00	N. Broad Stre	0.76	0.760	18	8,828	4,855	112	Double
2	SR 1502	WAKE COUNT	0.00	Angier CL	0.75	0.750	22	10,648	5,856	112	Double
3	SR 1503	SR 1502	0.00	WAKE CO.	0.25	0.246	20	3,175	1,746	112	Double
4	SR 1504	SR 1502	0.00	NC 210	1.17	1.171	20	15,114	8,313	112	Double
5	SR 1505	JOHNSTON CO	0.00	SR 1006	1.58	1.575	20	20,328	11,180	112	Double
6	SR 1513	SR 1516	2.58	US 421	4.45	1.876	18	21,792	11,986	112	Double
7	SR 1517	SR 1516	0.00	END MAINT.	0.75	0.753	18	8,747	4,811	84	Double
8	SR 1518	US 421	0.00	DEAD END	0.32	0.321	20	4,143	2,279	112	Double
9	SR 1520	SR 1516	0.00	SR 1542	1.40	1.404	18	16,309	8,970	112	Double
10	SR 1521	SR 1534	0.00	SR 1532	1.70	1.696	20	21,890	12,040	112	Double
11	SR 1532	SR 1006	2.66	SR 1516	6.70	4.039	20	52,130	28,672	282	Double
12	SR 1533	SR 2002	0.00	SR 1532	0.67	0.666	18	7,736	4,255	112	Double
13	SR 1534	SR 1532	0.00	SR 1516	0.41	0.412	18	4,786	2,632	112	Double
14	SR 1535	SR 1516	0.00	SR 1532	2.63	2.633	20	33,983	18,691	203	Double
15	SR 1537	SR 1532	0.00	SR 1538	1.70	1.699	20	21,928	12,060	112	Double
16	SR 1538	NC 55	0.00	SR 1532	2.95	2.950	18	34,267	18,847	193	Double
17	SR 1539	SR 1532	0.00	SR 1538	0.64	0.642	18	7,457	4,101	112	Double
18	SR 1540	SR 1543	0.00	SR 1542	1.42	1.415	20	18,263	10,045	84	Double
19	SR 1541	SR 1537	0.00	SR 1542	0.83	0.834	20	10,764	5,920	112	Double
20	SR 1542	SR 1516	4.69	US 421	6.60	1.907	18	22,152	12,184	112	Double
21	SR 1543	NC 55	0.00	SR 1542	1.08	1.077	18	12,510	6,881	84	Double
22	SR 1544	SR 1532	0.00	SR 1500	1.88	1.881	18	21,850	12,018	112	Double
23	SR 1563	SR 1590	0.00	NC 55	2.26	2.255	20	29,105	16,008	182	Double
24	SR 2002	SR 1532	0.00	NC 27	1.20	1.196	18	13,893	7,641	112	Double
TOTALS:						34.158		421,798	231,991	3,016	



Map	Route	From	Begin MP	To	End MP	CL Length (Mile)	Width (Ft.)	Yardage + 10% (SY)	Emulsion (GAL)	WZ Signs (SF)	Treatment
1	SR 1501	WAKE COUNTY	0.00	N. Broad Street	0.76	0.760	18	8,828	4,855	112	Double
2	SR 1502	WAKE COUNTY	0.00	Angier CL	0.75	0.750	22	10,648	5,856	112	Double
3	SR 1503	SR 1502	0.00	WAKE CO.	0.25	0.246	20	3,175	1,746	112	Double
4	SR 1504	SR 1502	0.00	NC 210	1.17	1.171	20	15,114	8,313	112	Double
5	SR 1505	JOHNSTON CO.	0.00	SR 1006	1.58	1.575	20	20,328	11,180	112	Double
6	SR 1513	SR 1516	2.58	US 421	4.45	1.876	18	21,792	11,986	112	Double
7	SR 1517	SR 1516	0.00	END MAINT.	0.75	0.753	18	8,747	4,811	84	Double
8	SR 1518	US 421	0.00	DEAD END	0.32	0.321	20	4,143	2,279	112	Double
9	SR 1520	SR 1516	0.00	SR 1542	1.40	1.404	18	16,309	8,970	112	Double
10	SR 1521	SR 1534	0.00	SR 1532	1.70	1.696	20	21,890	12,040	112	Double
11	SR 1532	SR 1006	2.66	SR 1516	6.70	4.039	20	52,130	28,672	282	Double
12	SR 1533	SR 2002	0.00	SR 1532	0.67	0.666	18	7,736	4,255	112	Double
13	SR 1534	SR 1532	0.00	SR 1516	0.41	0.412	18	4,786	2,632	112	Double
14	SR 1535	SR 1516	0.00	SR 1532	2.63	2.633	20	33,983	18,691	203	Double
15	SR 1537	SR 1532	0.00	SR 1538	1.70	1.699	20	21,928	12,060	112	Double
16	SR 1538	NC 55	0.00	SR 1532	2.95	2.950	18	34,267	18,847	193	Double
17	SR 1539	SR 1532	0.00	SR 1538	0.64	0.642	18	7,457	4,101	112	Double
18	SR 1540	SR 1543	0.00	SR 1542	1.42	1.415	20	18,263	10,045	84	Double
19	SR 1541	SR 1537	0.00	SR 1542	0.83	0.834	20	10,764	5,920	112	Double
20	SR 1542	SR 1516	4.69	US 421	6.60	1.907	18	22,152	12,184	112	Double
21	SR 1543	NC 55	0.00	SR 1542	1.08	1.077	18	12,510	6,881	84	Double
22	SR 1544	SR 1532	0.00	SR 1500	1.88	1.881	18	21,850	12,018	112	Double
23	SR 1563	SR 1590	0.00	NC 55	2.26	2.255	20	29,105	16,008	182	Double
24	SR 2002	SR 1532	0.00	NC 27	1.20	1.196	18	13893	7641	112	Double
TOTALS:						34.158		421,798	231,991	3,016	



PAVEMENT SCHEDULE	
F1	DOUBLE SEAL PLACED ACCORDING TO THE SPECIAL PROVISIONS
T	EXISTING SHOULDER
U	EXISTING ASPHALT

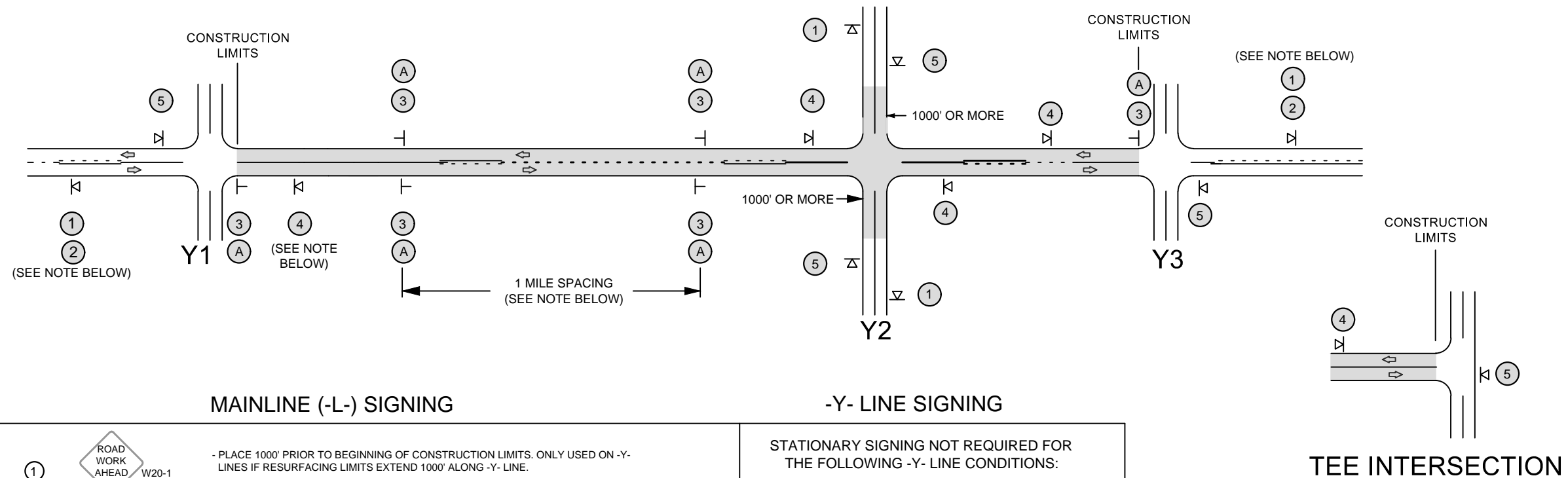


DETAIL 1
Y-LINE INTERSECTION TREATMENT

SIGNING FOR ASPHALT SURFACE TREATMENT

LEGEND

- PORTABLE SIGN
- STATIONARY SIGN
- DIRECTION OF TRAFFIC FLOW



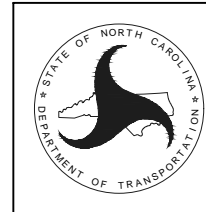
MAINLINE (-L-) SIGNING

-Y- LINE SIGNING

SIGNING NOTES AND PLACEMENT PER DIRECTION	<p>① ROAD WORK AHEAD W20-1 48" X 48"</p> <p>② NEXT XX MILES W7-3aP 24" X 18"</p>	<p>- PLACE 1000' PRIOR TO BEGINNING OF CONSTRUCTION LIMITS. ONLY USED ON -Y- LINES IF RESURFACING LIMITS EXTEND 1000' ALONG -Y- LINE.</p> <p>- SIGN #2 ONLY USED WHEN RESURFACING LIMITS ARE 2 OR MORE MILES IN LENGTH. ROUND UP TO THE NEAREST WHOLE NUMBER. DO NOT USE FRACTIONAL OR DECIMAL NUMBERS.</p>	<p>STATIONARY SIGNING NOT REQUIRED FOR THE FOLLOWING -Y- LINE CONDITIONS:</p> <ol style="list-style-type: none"> LESS THAN 1000' OF RESURFACING ALONG -Y- LINE SUBDIVISION ROADS DEAD END ROADS <p>WHEN PAVING/CONSTRUCTION ACTIVITIES PROCEED ACROSS AN UNSIGNED -Y- LINE, PORTABLE ADVANCE WARNING SIGNS SHALL BE USED ALONG THE -Y- LINE AS SHOWN BELOW. REMOVE UPON COMPLETION OF WORK.</p> <div style="display: flex; justify-content: space-around;"> <div style="text-align: center;"> PLACED 500' IN ADVANCE OF FLAGGER. </div> <div style="text-align: center;"> PLACED 250' IN ADVANCE OF FLAGGER. </div> </div>
	<p>③ LOOSE GRAVEL W8-7 48" X 48"</p> <p>UNMARKED PAVEMENT SP 48" X 48"</p>	<p>- ALTERNATE THE FOLLOWING TWO SIGNS:</p> <p>- STARTING WITH "LOOSE GRAVEL" (W8-7) FOLLOWED BY "UNMARKED PAVEMENT".</p> <p>- PLACE INITIALLY AT THE CONSTRUCTION LIMITS AND SPACED 1 MILE APART THEREAFTER.</p> <p>- AT TEE INTERSECTIONS INSTALL INITIALLY 0.5 MILE FROM INTERSECTION AND SPACE 1 MILE APART THEREAFTER.</p>	
	<p>A SPEED LIMIT 35 W13-1P 18" X 18"</p>	<p>PLACE INITIALLY AT THE CONSTRUCTION LIMITS AND SPACED 1 MILE APART THEREAFTER. IF NO -Y- LINES EXIST, PLACE 2ND SET 1/2 MILE FROM THE CONSTRUCTION LIMITS AND THEN SPACE 1 MILE THEREAFTER. SPEED LIMIT SIGN MAY BE PLACED ON SAME POST AS LOOSE GRAVEL SIGN, IF DESIRED.</p>	
	<p>④ ROAD UNDER CONST SP 13106 48" X 48"</p>	<p>- THESE ARE FOR -Y- LINES THAT ARE "THROUGH" ROADWAYS. DEAD END AND SUBDIVISION ROADS ARE NOT "THROUGH" ROADWAYS.</p> <p>- INSTALL 500' +/- FROM EACH -Y- LINE APPROACH AS SHOWN ABOVE.</p> <p>- FOR MULTIPLE -Y- LINES THAT ARE SEPARATED BY 0.25 MILES OR LESS, TREAT AS A SINGLE UNIT AND INSTALL WITHIN 500' OF EACH APPROACH.</p> <p>- A MAXIMUM OF 2 SIGN SETS PER MILE. DO NOT INSTALL WHEN -Y- LINES ARE WITHIN 0.5 MILES FROM "END ROAD WORK" SIGN.</p>	
	<p>⑤ END ROAD WORK G20-2 A 48" X 24"</p>	<p>PLACE 500' FOLLOWING THE END OF CONSTRUCTION LIMITS OR AS SHOWN WHEN WORK ENDS AT A 3-WAY TEE INTERSECTION.</p>	

NOTE:
IT IS THE CONTRACTOR'S RESPONSIBILITY TO ENSURE THE PROPER PLACEMENT AND LOCATION OF WORK ZONE SIGNING PER THE STANDARD DRAWING. NCDOT HAS THE RIGHT TO INSPECT THE PLANNED LOCATIONS AND REQUIRE ADJUSTMENT BY THE CONTRACTOR, AS NEEDED, OR AS DIRECTED BY THE ENGINEER.

MAPS LESS THAN 2 MILES
FOR AST RESURFACING MAPS WITH CONSTRUCTION LIMITS LESS THAN 2 MILES IN LENGTH, USE A STATIONARY "LOOSE GRAVEL" SIGN AT THE BEGINNING CONSTRUCTION LIMIT FOLLOWED BY AN "UNMARKED PAVEMENT" SIGN MIDWAY THROUGH AND AN "END ROAD WORK" SIGN AT THE END CONSTRUCTION LIMIT.



REVISED - 12-13-2018
NCDOT - DIVISION 6
ADVANCE WARNING SIGNS FOR 2-LANE ROADWAY ASPHALT SURFACE TREATMENT