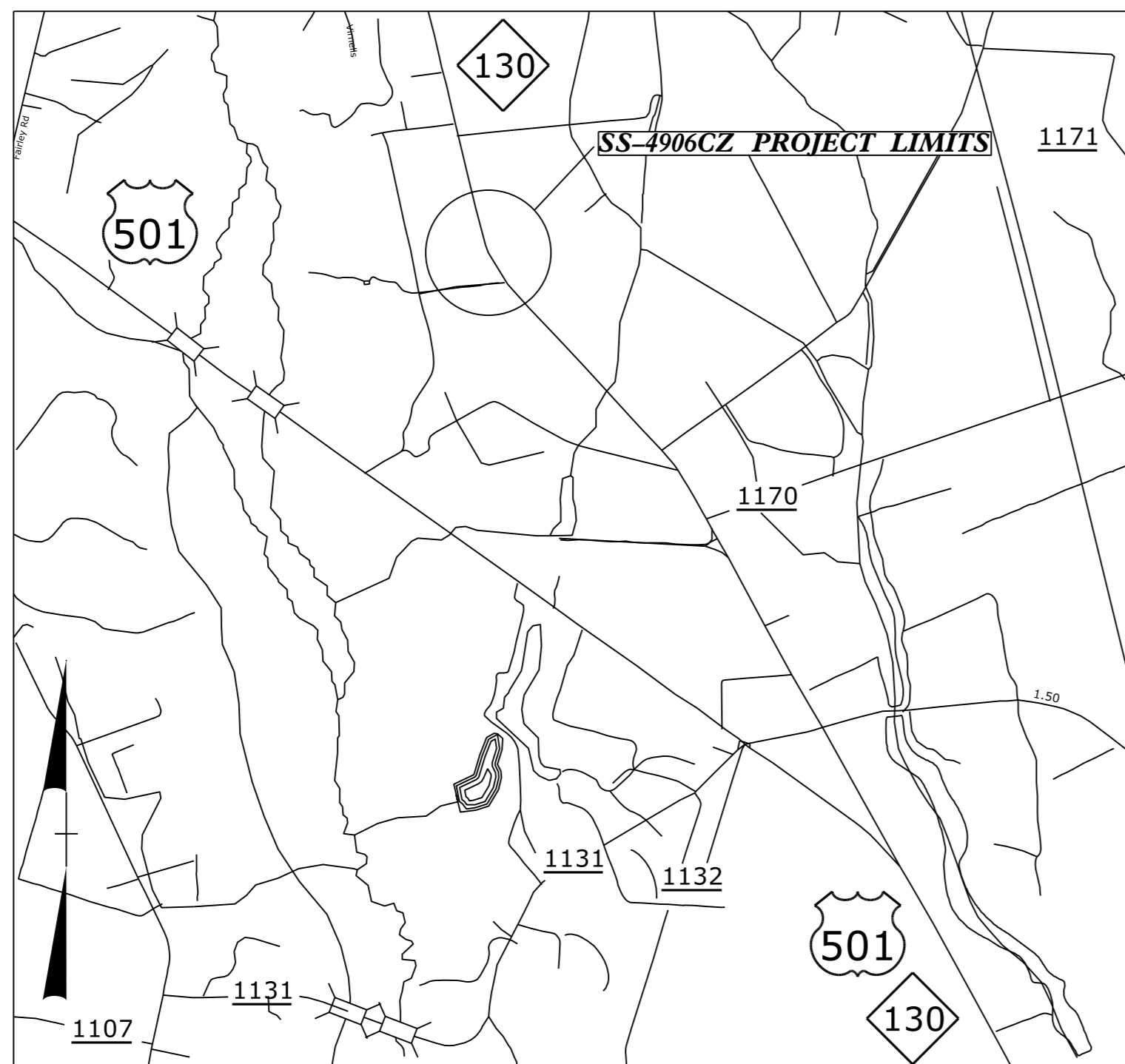


27-MAR-2019 16:14
 H:\DDC\Projects\SS-4906CZ NC 130 curve at Quinn Road\Rob Co\Roadway\proj\SS-4906CZ-Rdy-fsh.dgn
 \$\$\$USERNAME\$\$\$

09/08/99

CONTRACT: DF00264

TIP PROJECT: SS-4906CZ



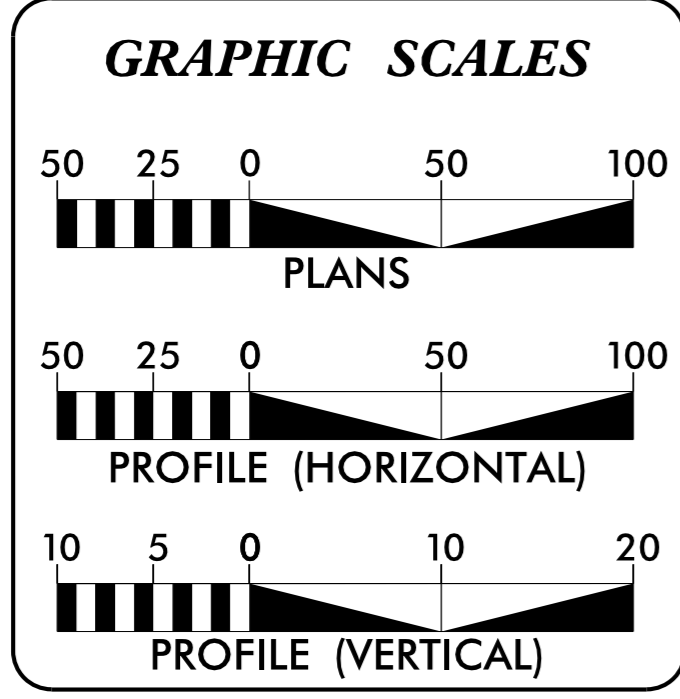
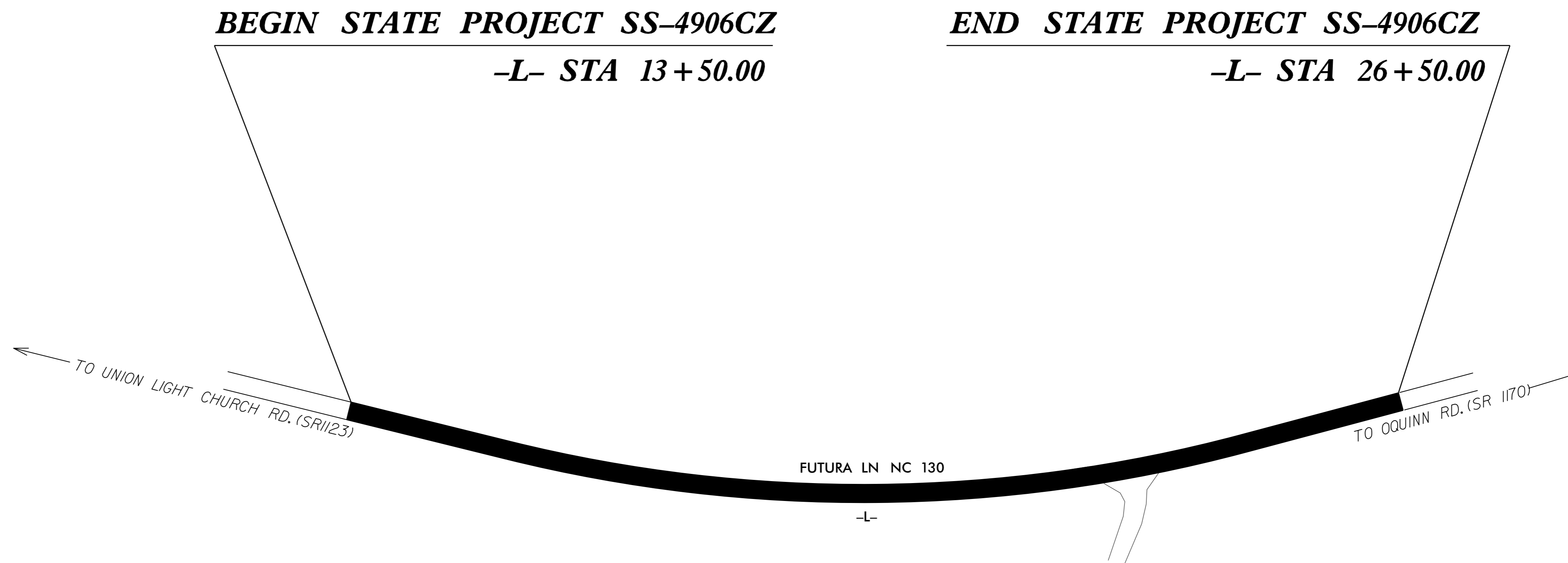
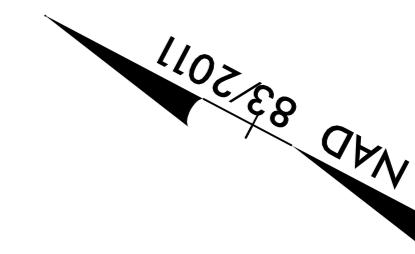
STATE OF NORTH CAROLINA
 DIVISION OF HIGHWAYS

ROBESON COUNTY

**LOCATION: NC 130 (FUTURA LANE) APPROXIMATELY 0.875 MILES
 WEST OF SR 1170 (OQUINN ROAD)**

**TYPE OF WORK: WEDGING, PAVING, DRAINAGE
 AND PAVEMENT MARKINGS**

STATE	STATE PROJECT REFERENCE NO.	SHEET NO.	TOTAL SHEETS
N.C.	SS-4906CZ	1	
STATE PROJ. NO.	F.A. PROJ. NO.	DESCRIPTION	
47357.1.1		P.E.	
47357.3.1		CONSTRUCTION	



DESIGN DATA

ADT 2017 = 1700

V = 60 MPH

PROJECT LENGTH

TOTAL LENGTH OF STATE PROJECT SS-4906CZ = 0.246 MILES

Prepared in the Office of:
DIVISION OF HIGHWAYS
 431 Transportation Dr., Fayetteville, N.C. 28301

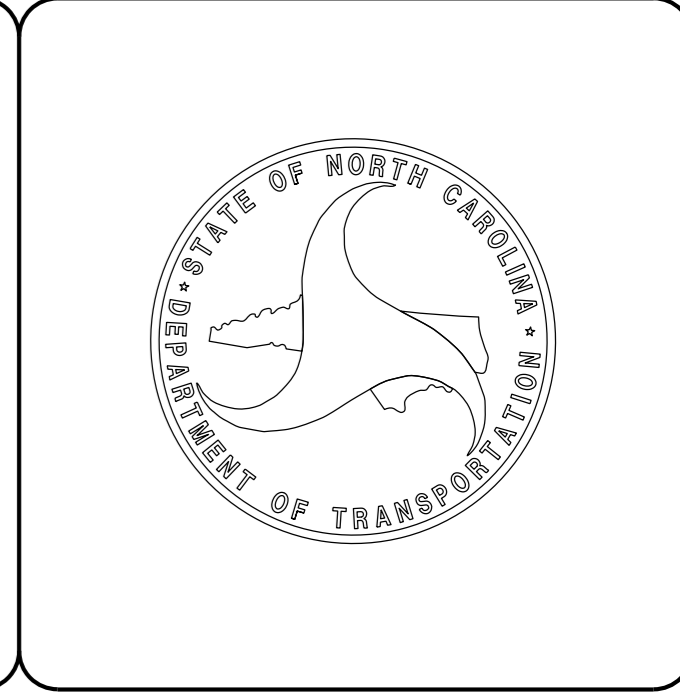
2018 STANDARD SPECIFICATIONS

RIGHT OF WAY DATE:
 NA

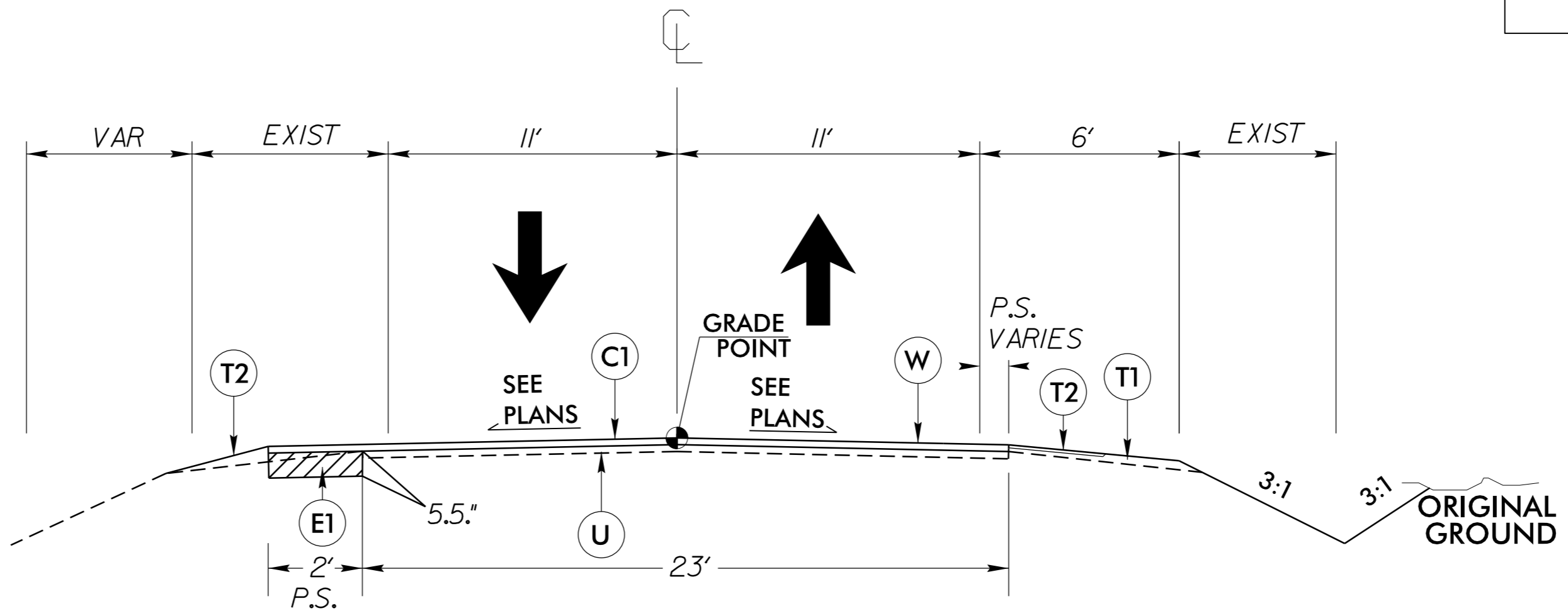
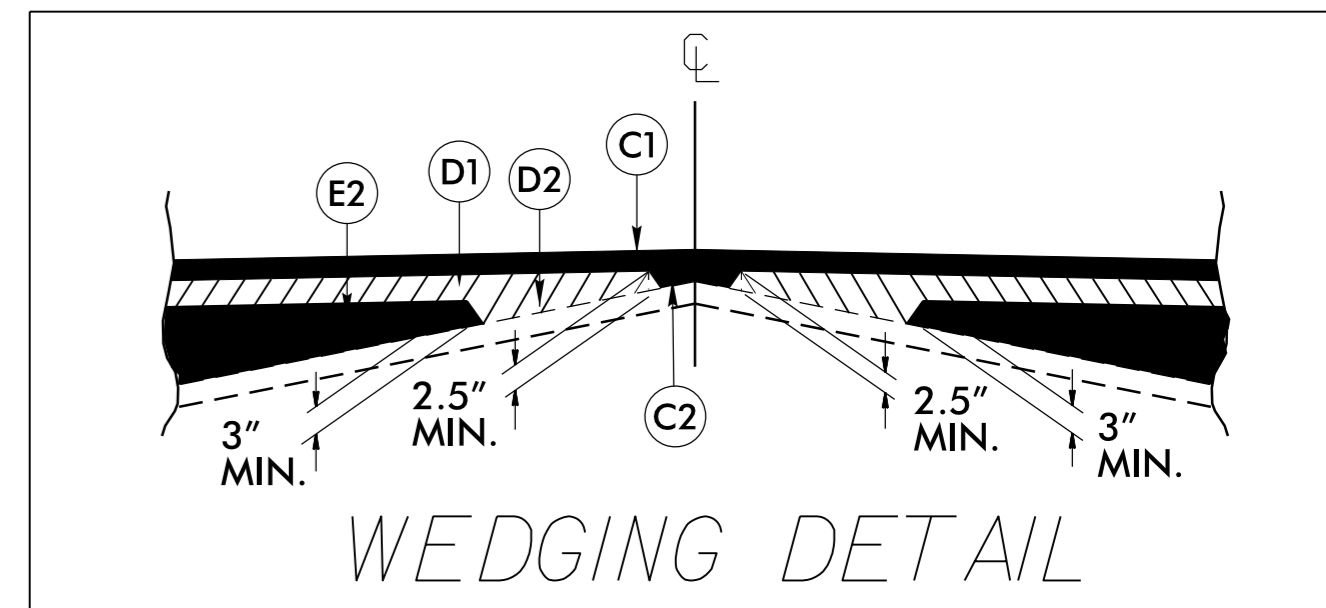
LETTING DATE:
 MAY 1, 2019

JOHN GAUTHIER
 PROJECT ENGINEER

NEIL BUTLER
 PROJECT DESIGN ENGINEER



PAVEMENT SCHEDULE	
C1	PROP. APPROX. 1½" ASPHALT CONCRETE SURFACE COURSE, TYPE S9.5C, AT AN AVERAGE RATE OF 168 LBS. PER SQ. YD.
C2	PROP. VAR. DEPTH ASPHALT CONCRETE SURFACE COURSE, TYPE S9.5C, AT AN AVERAGE RATE OF 112 LBS. PER SQ. YD. PER 1" DEPTH. TO BE PLACED IN LAYERS NOT TO EXCEED 2" IN DEPTH.
D1	PROP. APPROX. 3" ASPHALT CONCRETE INTERMEDIATE COURSE, TYPE I19.0C, AT AN AVERAGE RATE OF 342 LBS. PER SQ. YD.
D2	PROP. VAR DEPTH ASPHALT CONC. INTERMEDIATE COURSE, TYPE I19.0C, AT AN AVERAGE RATE OF 114 LBS PER SQ. YD. PER 1" DEPTH. TO BE PLACED IN LAYERS NOT LESS THAN 2½" OR GREATER THAN 4" IN DEPTH.
E1	PROP. APPROX. 5½" ASPHALT CONCRETE BASE COURSE, TYPE B25.0C, AT AN AVERAGE RATE OF 627 LBS. PER SQ. YD.
E2	PROP. VAR. DEPTH ASPHALT CONC. BASE COURSE, TYPE B25.0C, AT AN AVERAGE RATE OF 114 LBS PER SQ. YD. PER 1" DEPTH, TO BE PLACED IN LAYERS NOT GREATER THAN 5½" IN DEPTH OR LESS THAN 3" IN DEPTH
T1	EARTH MATERIAL (HIGH SIDE OF CURVE)
T2	AGGREGATE SHOULDER BORROW (2' WIDE BOTH SIDES)
U	EXISTING PAVEMENT
W	WEDGING



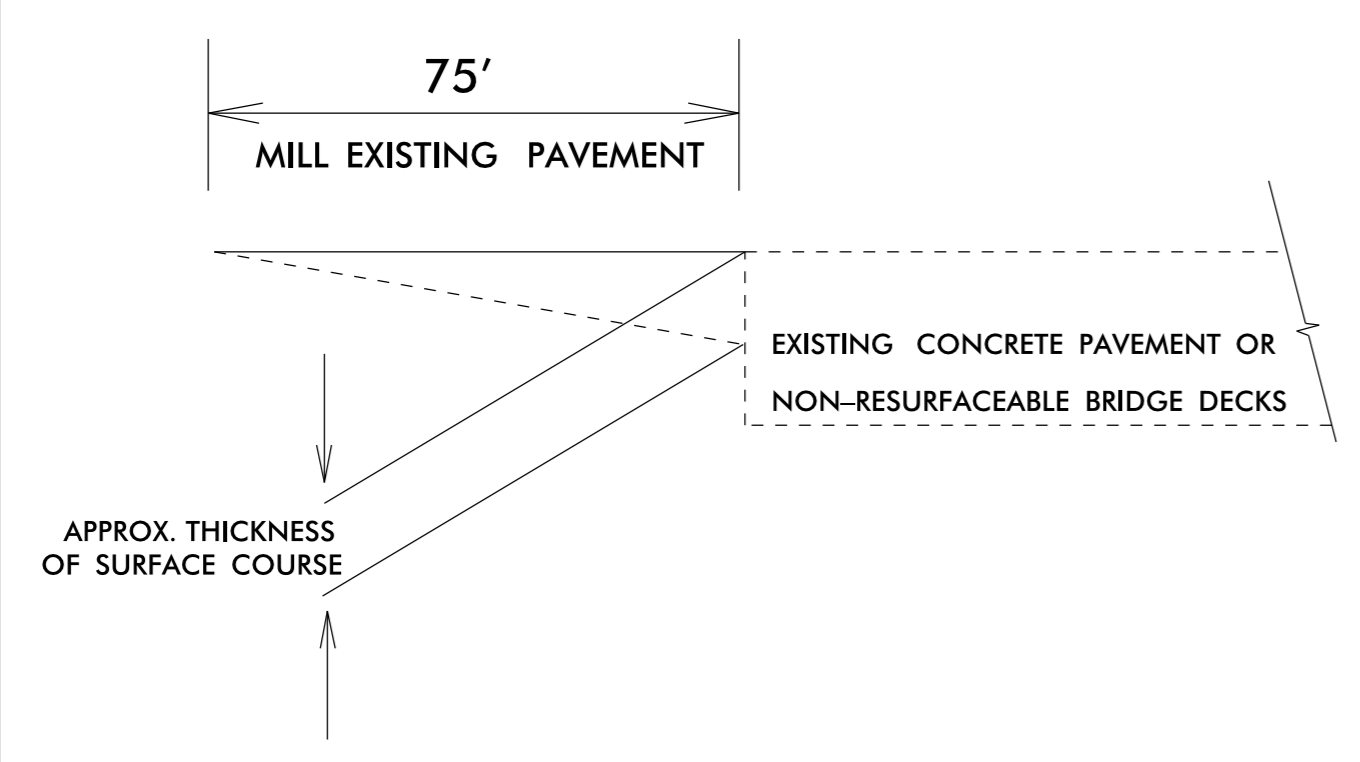
MILLING AT PAVEMENT TIE-INS

NOTES TO CONTRACTOR

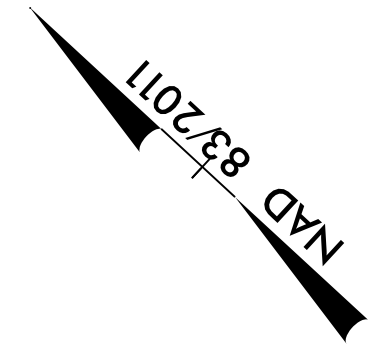
For surface mixes over 1" in thickness, mill the existing pavement in accordance with the following sketch as directed by the Engineer.

Locations shall include ties into existing concrete pavement, at bridge approaches where the bridge will not be resurfaced, and at the beginning and ending point of each resurfacing map.

Perform the work in accordance with Section 607 of the January 2012 North Carolina Department of Transportation Standard Specifications for Roads and Structures. Resurfacing will be accomplished at the same time as the milling operation.



21-MAR-2019 16:05 C:\Roadway\proj\SS-4906CZ\Fdy-tyr.dgn
 6/2/99
 21-MAR-2019 16:05 C:\Roadway\proj\SS-4906CZ\Fdy-tyr.dgn

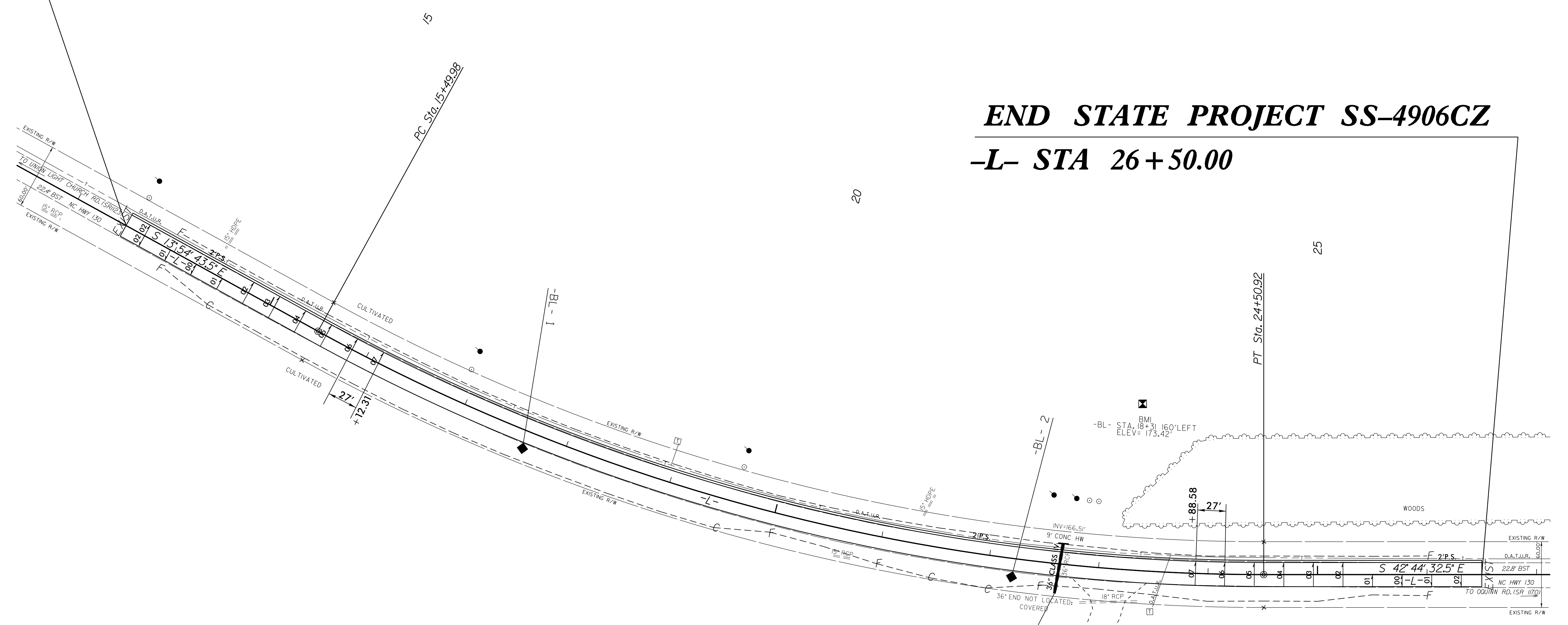


BEGIN STATE PROJECT SS-4906CZ
-L- STA 13+50.00

END STATE PROJECT SS-4906CZ
-L- STA 26+50.00

REVISIONS

21-MAR-2019 16:04 SS-4906CZ NC 130 curve at Durnm Road, Rob Co \Roadway\proj\SS-4906CZ_Rdy_psh_4.dgn
 8/17/99



-L-
 PI Sta 20+10.20
 $\Delta = 28^{\circ} 49' 49.1''$ (LT)
 $D = 3^{\circ} 12' 00.0''$
 $L = 900.95'$
 $T = 460.23'$
 $R = 1,790.49'$

REMOVE AND REPLACE
 48' OF 36' RCP
 AND ENDWALL

5/14/99

21-FEB-2019 15:34
C:\Roadway\proj\SS-4906CZ\SS-4906CZ.Rdy.plt.5.dgn

PROJECT REFERENCE NO.	SHEET NO.
SS-4906CZ	5

210
190
180
170
160
150
140
130
120

