

STATE OF NORTH CAROLINA
DEPARTMENT OF TRANSPORTATION
HIGHWAY DIVISION 6

PLANS

Letting Date: September 29, 2021

CONTRACT ID: D6D2.POC.014

TIP NO.: -----

FEDERAL AID NO.: 17106.1043015, ETC.

WBS ELEMENT NO.: 17106.1043015, ETC.

ROUTE NO.: VARIOUS PRIMARY & SR

LOCATION: VARIOUS

COUNTY: HARNETT

TYPE OF WORK: BOX CULVERT SCOUR REPAIRS - REBID

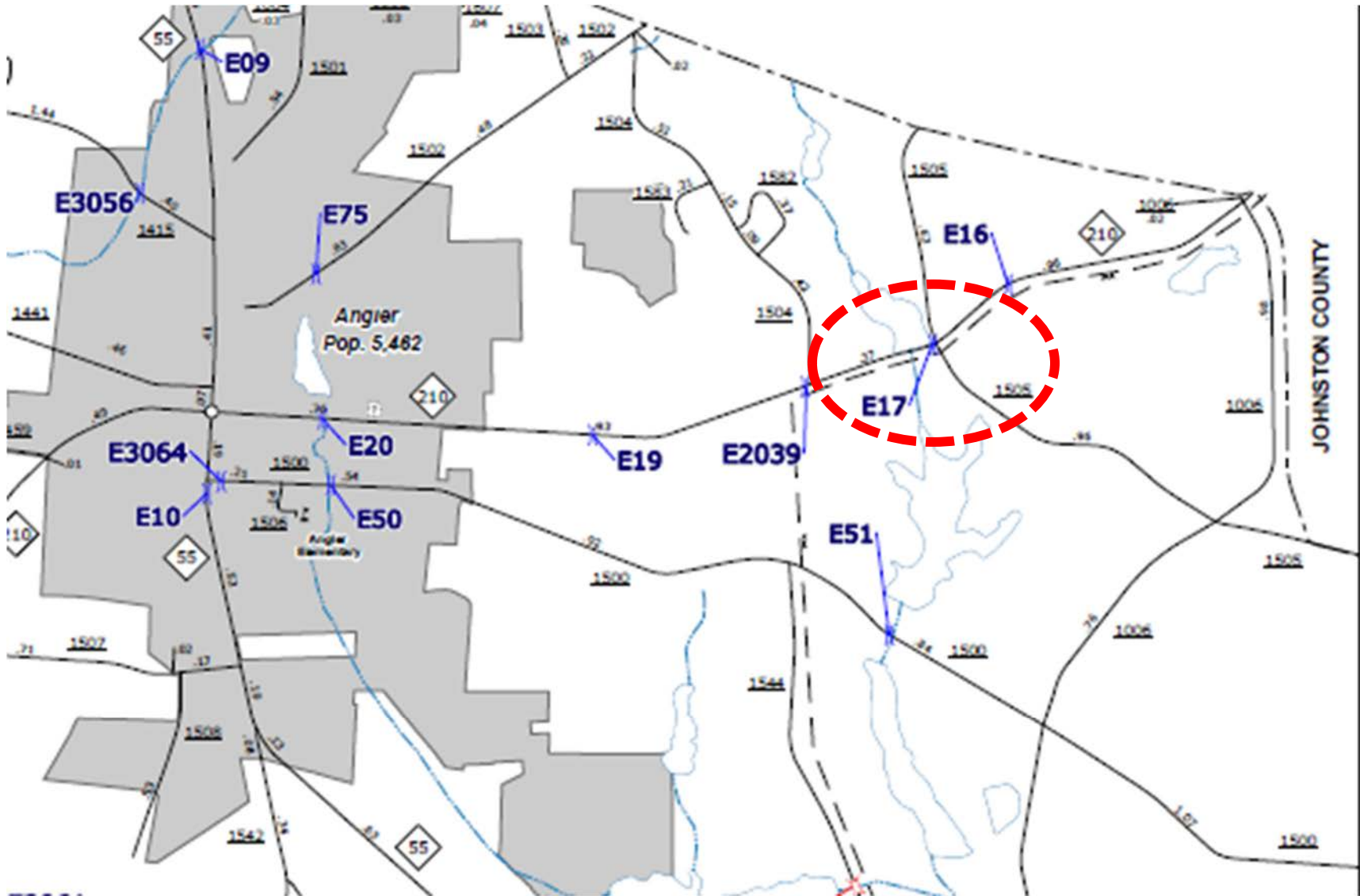
STORM DAMAGE LOCATIONS - NOVEMBER 11, 2020 RAIN EVENT

CONTRACT NO.: D6D2.POC.014
ROUTE: Various Primary & SR
PROJECT: Box Culvert Scour Repairs

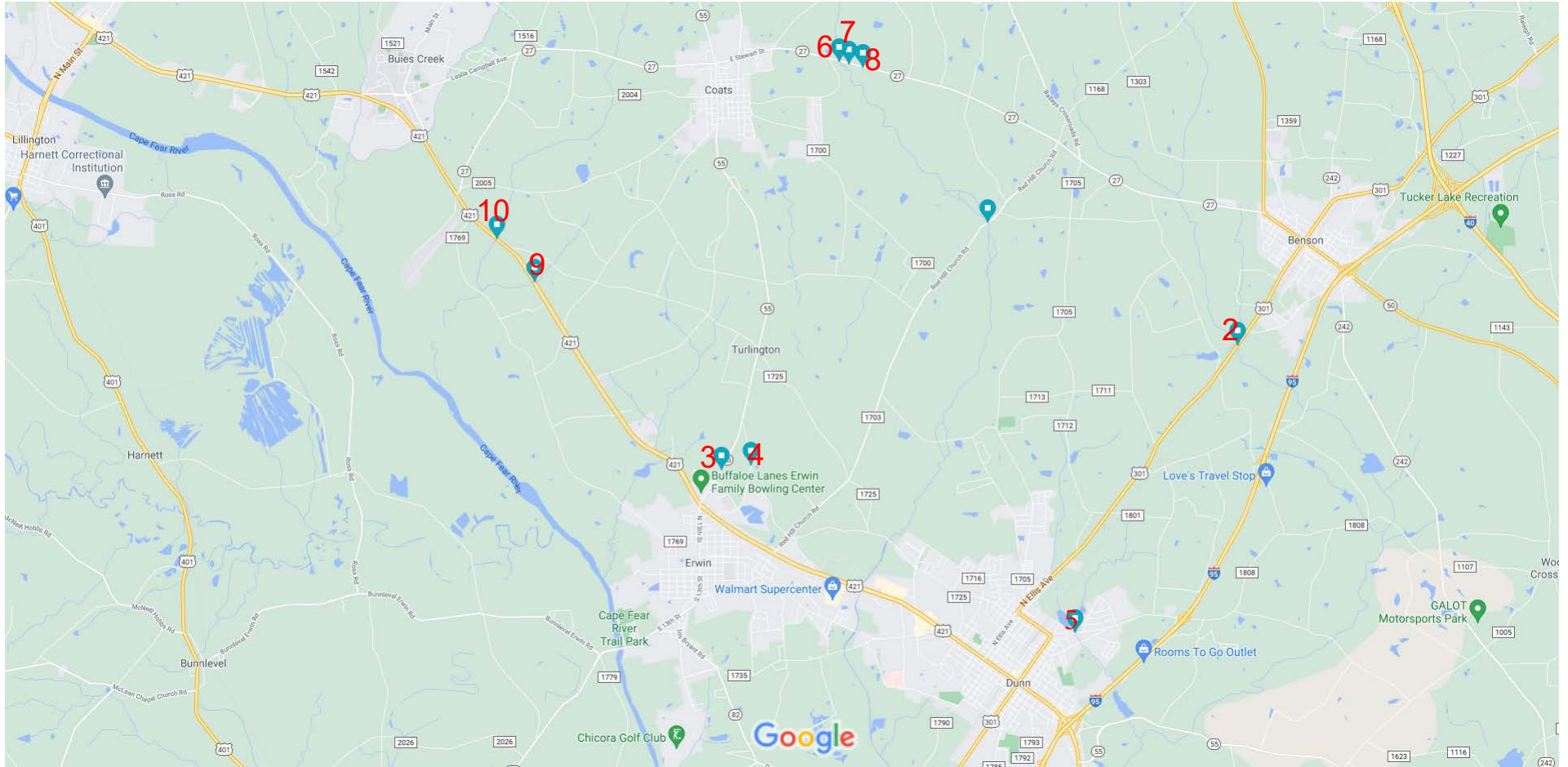
WBS NO.: 17106.1043015, etc.
DATE: 8/26/2021
COUNTY: Harnett

Map #	WBS #	Route type	Route Number	Common name	Culvert #
1	17106.1043015	NC	210	Highway 210	17
2	17106.1043016	US	301	US 301	19
3	17106.1043017	NC	55	NC 55	20
4	17106.1043018	SR	1726	Maynard Lake Road	261
5	17106.1043019	SR	1808	Jonesboro Road	251
6	17106.1043020	NC	27	NC 27	67
7	17106.1043021	NC	27	NC 27	68
8	17106.1043022	NC	27	NC 27	70
9	17106.1043023	US	421	Paul Green Memorial Hwy.	256
10	17106.1043024	US	421	Paul Green Memorial Hwy.	255

Map #1 - 17106.1043015 - NC 210 – Culvert 17



Google Maps Culvert Maintenance Locations



D6D2.POC.014 – LOCATION REPAIR PLANS – HARNETT COUNTY

Note:

- Verify all locations of scour by sounding or grade rod prior to placement of Rip Rap.

Map #1 - 17106.1043015 - NC 210 – Culvert 17



Repair outlet toe wall scour (15' x 10' x 4') with 30 tons of Class 2 Rip Rap.

Map #2 - 17106.1043016 - US 301 - Culvert 19



Repair Scour SE Corner (40' x 20' x 10'), NE Corner (5' x 5' x 5') and SW Corner (6' x 6' x 6'), placing Class B in each area to return to existing ground level.

Map #3 - 17106.1043017 – NC 55 - Culvert 20



Repair toe wall scour upstream (3' X 4' X 40') and Downstream (1' X 4' X 40') with Class 2 Rip Rap.

Map #4 - 17106.1043018 – SR 1726 – Maynard Lake Road - Culvert 261



Repair Inlet toe wall scour: 3' X 4' X 60' and Outlet toe wall scour: 2' X 30' X 4' With Class 2 Rip Rap.

Map #5 - 17106.2043019 – SR 1808 – Jonesboro Road - Culvert 251



Repair Inlet toe wall scour: 25' X 4' X 2' and Outlet toe wall scour: 25' X 4' X 2' with Class II Rip Rap and remove and dispose of drift from inlet side: approximately 15' X 15' X 5'.

Map #6 - 17106.2043020 – NC 27 - Culvert 67

Repair inlet toe wall scour: 1' X 4' X 18' with Class II Rip Rap.

Map #7 - 17106.2043021 – NC 27 - Culvert 68

Repair inlet toe wall scour: 1' X 4' X 20' with Class II Rip Rap

Map #8 - 17106.2043022 – NC 27 - Culvert 70

Repair inlet toe wall scour: 2' X 4' X 20' and outlet toe wall scour: 1x4x20 with Class II Rip Rap.

Map #9 - 17106.2043023 – US 421 – Paul Green Memorial Hwy. – Culvert 256



Repair Inlet toe wall scour and SE wing at barrel 1: 25' x 2' x 4' with Class II Rip Rap..

Map #10 - 17106.2043024 – US 421 – Paul Green Memorial Hwy. - Culvert 255



Repair outlet toe wall scour (35' x 2' x 4'), south corner wing scour (6' x 4' x 4'), and inlet toe wall scour (35' x 1' x 4') with Class II Rip Rap.