

State of Virginia

Stokes County

Caswell County

Guilford County

Alamance County



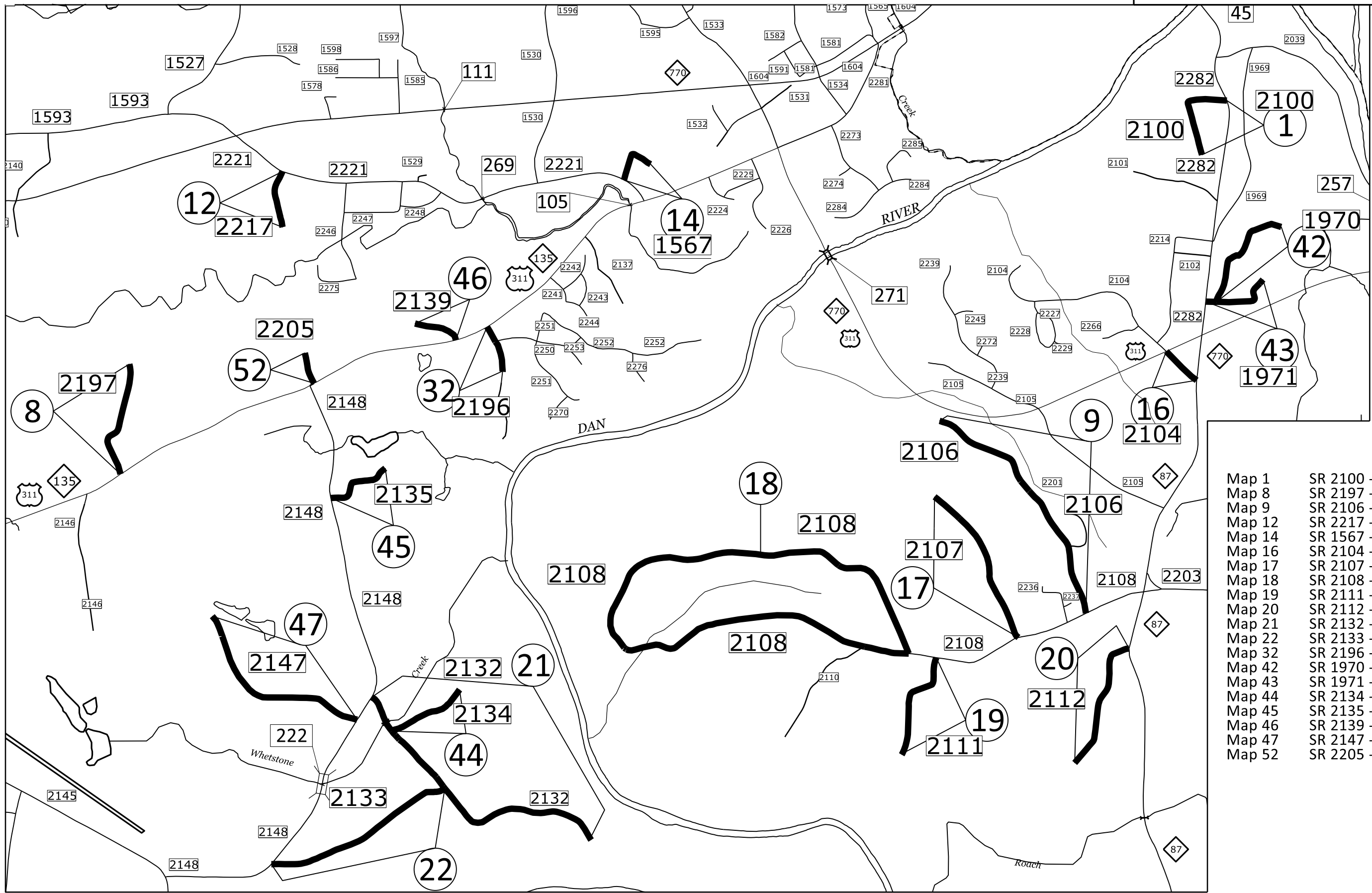
Sheet No. 4

Sheet No. 2

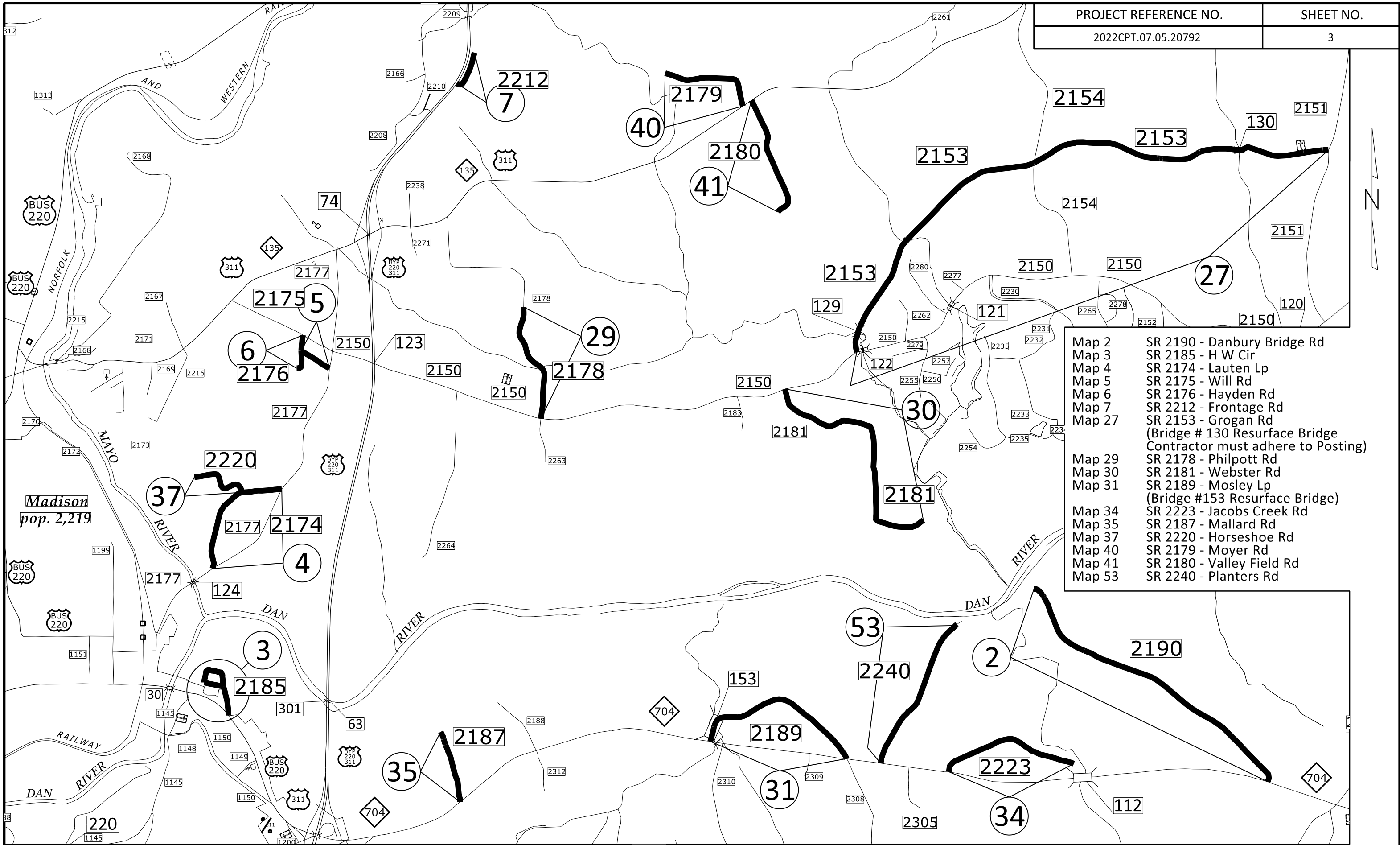
Sheet No. 3

Sheet No. 5

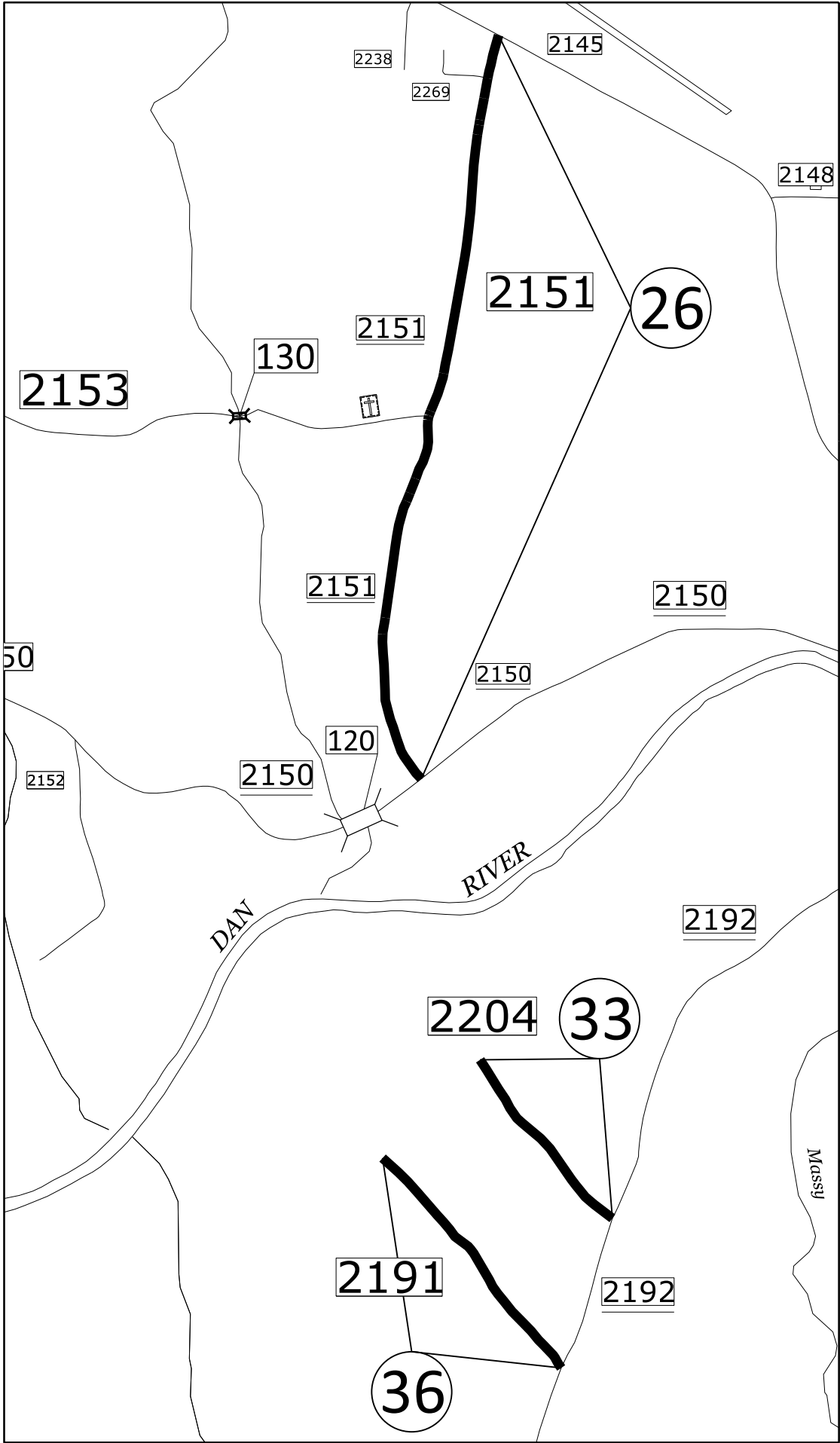
**ROCKINGHAM
COUNTY**
NORTH CAROLINA



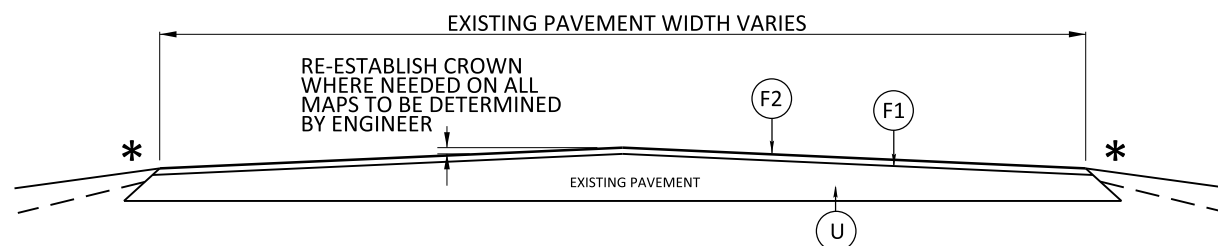
- Map 1 SR 2100 - Parker Rd
- Map 8 SR 2197 - Carter Dairy Rd
- Map 9 SR 2106 - Piney Fork Church Rd
- Map 12 SR 2217 - Calvary Rd
- Map 14 SR 1567 - Josephine Rd
- Map 16 SR 2104 - Longhook Rd
- Map 17 SR 2107 - Buttercup Rd
- Map 18 SR 2108 - Riverside Cir
- Map 19 SR 2111 - Roach Creek Rd
- Map 20 SR 2112 - Raven Rd
- Map 21 SR 2132 - Bent Farm Rd
- Map 22 SR 2133 - Godsey Farm Rd
- Map 32 SR 2196 - Titan Berry Rd
- Map 42 SR 1970 - Garden Rd
- Map 43 SR 1971 - Warren Rd
- Map 44 SR 2134 - Westmoreland Rd
- Map 45 SR 2135 - Tuttle Rd
- Map 46 SR 2139 - Saunders Rd
- Map 47 SR 2147 - Irving Rd
- Map 52 SR 2205 - Grassy Springs Rd



- | | |
|--------|---------------------------------------------------------------------------------------------|
| Map 2 | SR 2190 - Danbury Bridge Rd |
| Map 3 | SR 2185 - H W Cir |
| Map 4 | SR 2174 - Lauten Lp |
| Map 5 | SR 2175 - Will Rd |
| Map 6 | SR 2176 - Hayden Rd |
| Map 7 | SR 2212 - Frontage Rd |
| Map 27 | SR 2153 - Grogan Rd
(Bridge # 130 Resurface Bridge
Contractor must adhere to Posting) |
| Map 29 | SR 2178 - Philpott Rd |
| Map 30 | SR 2181 - Webster Rd |
| Map 31 | SR 2189 - Mosley Lp
(Bridge #153 Resurface Bridge) |
| Map 34 | SR 2223 - Jacobs Creek Rd |
| Map 35 | SR 2187 - Mallard Rd |
| Map 37 | SR 2220 - Horseshoe Rd |
| Map 40 | SR 2179 - Moyer Rd |
| Map 41 | SR 2180 - Valley Field Rd |
| Map 53 | SR 2240 - Planters Rd |



Map 26 SR 2151 - Belton Rd
 Map 33 SR 2204 - Poppy Rd
 Map 36 SR 2191 - Paisley Rd

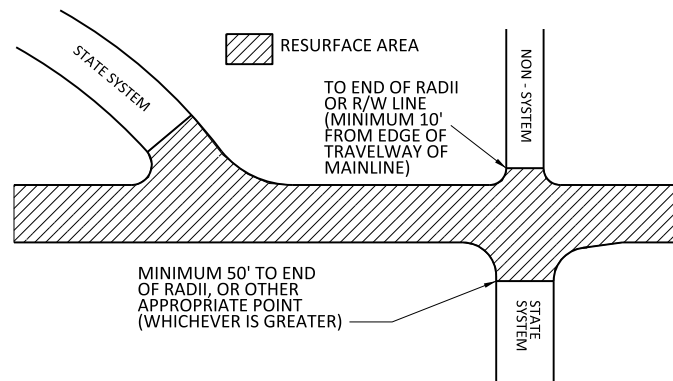


* NOTE:
THE SURFACE TO BE TREATED SHALL BE CLEANED TO THE SATISFACTION OF THE INSPECTOR PRIOR TO STARTING ON EACH MAP

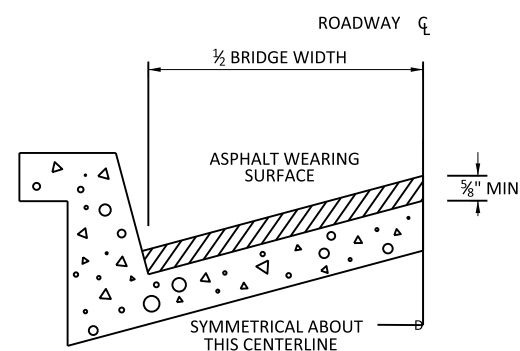
TYPICAL SECTION NO. 1

Map 1	SR 2100 - Parker Rd	Map 21	SR 2132 - Bent Farm Rd	Map 41	SR 2180 - Valley Field Rd
Map 2	SR 2190 - Danbury Bridge Rd	Map 22	SR 2133 - Godsey Farm Rd	Map 42	SR 1970 - Garden Rd
Map 3	SR 2185 - H W Cir	Map 23	SR 2142 - Land Rd	Map 43	SR 1971 - Warren Rd
Map 4	SR 2174 - Lauten Lp	Map 24	SR 2286 - Land Rd	Map 44	SR 2134 - Westmoreland Rd
Map 5	SR 2175 - Will Rd	Map 25	SR 2143 - Duck Rd	Map 45	SR 2135 - Tuttle Rd
Map 6	SR 2176 - Hayden Rd	Map 26	SR 2151 - Belton Rd	Map 46	SR 2139 - Saunders Rd
Map 7	SR 2212 - Frontage Rd	Map 27	SR 2153 - Grogan Rd	Map 47	SR 2147 - Irving Rd
Map 8	SR 2197 - Carter Dairy Rd		(Bridge # 130 Resurface Bridge	Map 48	SR 2155 - Comer Rd
Map 9	SR 2106 - Piney Fork Church Rd		Contractor must adhere to Posting)	Map 49	SR 2161 - Joyce Farm Rd
Map 10	SR 2156 - Derris Rd	Map 28	SR 2160 - Stone School Rd	Map 50	SR 2163 - Watkins Rd
Map 11	SR 2213 - Pextile Plant Rd	Map 29	SR 2178 - Philpott Rd	Map 51	SR 2164 - Frye Rd
Map 12	SR 2217 - Calvary Rd	Map 30	SR 2181 - Webster Rd	Map 52	SR 2205 - Grassy Springs Rd
Map 13	SR 1369 - Price St	Map 31	SR 2189 - Mosley Lp	Map 53	SR 2240 - Planters Rd
Map 14	SR 1567 - Josephine Rd		(Bridge #153 Resurface Bridge)		
Map 15	SR 1594 - Priddy Lp	Map 32	SR 2196 - Titan Berry Rd		
Map 16	SR 2104 - Longhook Rd	Map 33	SR 2204 - Poppy Rd		
Map 17	SR 2107 - Buttercup Rd	Map 34	SR 2223 - Jacobs Creek Rd		
Map 18	SR 2108 - Riverside Cir	Map 35	SR 2187 - Mallard Rd		
Map 19	SR 2111 - Roach Creek Rd	Map 36	SR 2191 - Paisley Rd		
Map 20	SR 2112 - Raven Rd	Map 37	SR 2220 - Horseshoe Rd		
		Map 38	SR 2222 - Dalton Lp		
		Map 39	SR 2249 - Deaton Lp		
		Map 40	SR 2179 - Moyer Rd		

NOTE: NON-SYSTEM = (CITY STREET, PRIVATE DRIVE, SCHOOL BUS DRIVE)



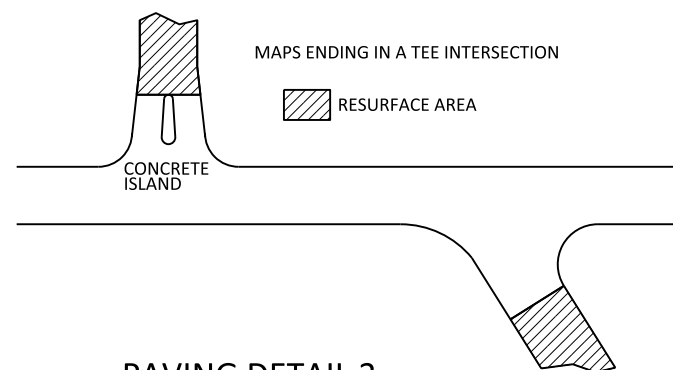
PAVING DETAIL 1
MAIN LINE IS BEING RESURFACED



BRIDGE HALF TYPICAL SECTION

FOR BRIDGES WITH FLOOR DRAINS, CARE SHALL BE EXERCISED IN PLACING THE WEARING SURFACE AROUND FLOOR DRAINS SO AS NOT TO HINDER EFFECTIVE DRAINAGE. ALL DRAINS SHALL BE LEFT OPEN. THE PROPOSED WEARING SURFACE SHALL VARY IN THICKNESS AS NECESSARY TO PROVIDE A SMOOTH RIDING SURFACE. A THICKNESS OF NOT LESS THAN 3/8" SHALL BE PROVIDED. THE MAXIMUM THICKNESS SHALL PREFERABLY BE 1-1/2" UNLESS IT IS IMPRACTICAL TO PROVIDE A SMOOTH RIDING SURFACE OTHERWISE.

NOTES
ALL UNPAVED S.R. ROUTES TO BE SURFACED 50' FROM EDGE OF PAVEMENT OF MAIN PROJECT.
ALL PAVED S.R. ROUTES TO BE RESURFACED TO END OF RADII, OR AS DIRECTED BY THE ENGINEER. EDGES, PAVEMENT WIDENING, INTERSECTIONS AND BRIDGE FLARES ARE INCLUDED IN THE SUMMARY OF QUANTITIES. BRIDGES TO BE RESURFACED AT LOCATIONS AND DEPTH AS DIRECTED BY THE ENGINEER.



PAVING DETAIL 2
MAIN LINE NOT BEING RESURFACED

PAVEMENT SCHEDULE

F1	PROPOSED ASPHALT SURFACE TREATMENT, DOUBLE SEAL
F2	PROPOSED FOG SEAL
U	EXISTING PAVEMENT

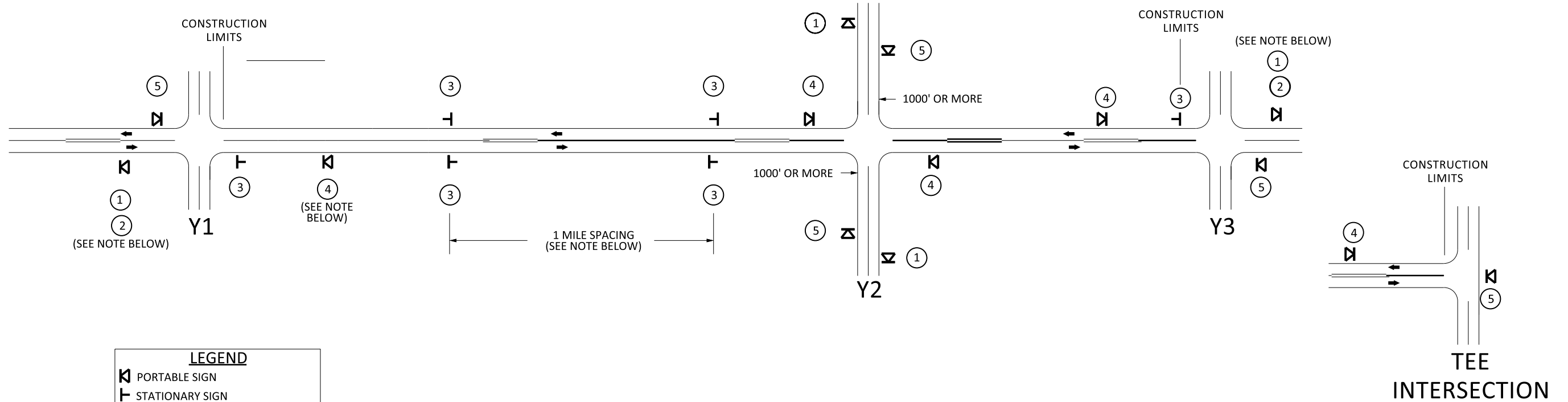
SIGNING FOR ASPHALT SURFACE TREATMENT

PROJECT REFERENCE NO.

2023CPT.07.05.20792

SHEET NO.

7



LEGEND	
	PORTABLE SIGN
	STATIONARY SIGN
	DIRECTION OF TRAFFIC FLOW

MAINLINE (-L-) SIGNING

-Y- LINE SIGNING

SIGNING NOTES AND PLACEMENT PER DIRECTION	1		PLACE 1000' PRIOR TO BEGINNING OF CONSTRUCTION LIMITS. ONLY USED ON -Y- LINES IF RESURFACING LIMITS EXTEND 1000' ALONG -Y- LINE.
	2		#2 SIGN ONLY USED WHEN RESURFACING LIMITS ARE 2 OR MORE MILES IN LENGTH. ROUND UP TO NEXT WHOLE NUMBER.(NO FRACTIONAL OR DECIMAL NUMBERS)
	3	 	- ALTERNATE THE FOLLOWING TWO SIGNS: - STARTING WITH "LOOSE GRAVEL" (WB-7) FOLLOWED BY "UNMARKED PAVEMENT". - PLACE INITIALLY AT THE CONSTRUCTION LIMITS AND SPACED 1 MILE APART THEREAFTER. - AT TEE INTERSECTIONS INSTALL INITIALLY 0.5 MILES FROM INTERSECTION AND SPACE 1 MILE APART THEREAFTER.
	4		THESE ARE FOR -Y- LINES THAT ARE "THROUGH" ROADWAYS. DEAD END AND SUBDIVISION ROADS ARE NOT "THROUGH" ROADWAYS. INSTALL 500' +/- FROM EACH -Y- LINE APPROACH AS SHOWN ABOVE. FOR MULTIPLE -Y- LINES THAT ARE SEPARATED BY 0.25 MILES OR LESS, TREAT AS A SINGLE UNIT AND INSTALL WITHIN 500' OF EACH APPROACH. A MAXIMUM OF 2 SIGN SETS PER MILE. DO NOT INSTALL WHEN -Y- LINES ARE WITHIN 0.5 MILES FROM "END ROAD WORK" SIGN.
	5		PLACE 500' FOLLOWING THE END OF CONSTRUCTION LIMITS.
THE ABOVE SIGNS ARE ALL THAT ARE REQUIRED FOR A CONTRACTOR TO BEGIN A RESURFACING CONTRACT. ANY ADDITIONAL SIGNS REQUESTED BY NCDOT DIVISIONS SHALL BE INSTALLED WITHIN 7 BUSINESS DAYS OF THE START OF CONTRACT WORK.			
MAPS LESS THAN 2 MILES	FOR AST RESURFACING MAPS WITH CONSTRUCTION LIMITS LESS THAN 2 MILES IN LENGTH, USE A STATIONARY "LOOSE GRAVEL" SIGN AT THE BEGINNING CONSTRUCTION LIMIT FOLLOWED BY AN "UNMARKED PAVEMENT" SIGN MIDWAY THROUGH AND AN "END ROAD WORK" SIGN AT THE END CONSTRUCTION LIMIT.		

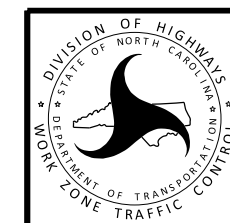
NO REQUIRED STATIONARY SIGNING FOR THE FOLLOWING -Y- LINE CONDITIONS:

- 1) LESS THAN 1000' OF RESURFACING ALONG -Y- LINE
- 2) SUBDIVISION ROADS
- 3) DEAD END ROADS

WHEN PAVING/CONSTRUCTION ACTIVITIES PROCEED ACROSS AN UNSIGNED -Y- LINE, ADVANCE WARNING PORTABLE SIGNS SHALL BE USED ALONG THE -Y- LINE AS SHOWN BELOW. REMOVE UPON COMPLETION OF WORK.

PLACED 500' IN ADVANCE OF FLAGGER.

PLACED 250' IN ADVANCE OF FLAGGER.



RESURFACING
ADVANCE WARNING SIGNS
FOR
RURAL AND SUBURBAN
2 LANE ROADWAYS

2023 Rockingham County AST

Project No.

Sheet No.

2023CPT.07.05.20792

8

Map #	SR # Name	Description	Length	Width	ASPHALT SURFACE TREATMENT, DOUBLE SEAL	ASPHALT SURFACE TREATMENT, FOG SEAL	EMULSION FOR ASPHALT SURFACE TREATMENT	VACUUM TRUCK	WORK ZONE ADVANCE/ GENERAL WARNING SIGNING	TEMPORARY TRAFFIC CONTROL	6" HOT SPRAY THERMO (WHITE)	4" HOT SPRAY THERMO (WHITE)	4" HOT SPRAY THERMO (YELLOW)
			Miles	(Feet)	SY	SY	GAL	WK	SF	LS	LF	LF	LF
Map 1	SR 2100 - Parker Rd	From SR 2282 - S Hamilton St TO END MAINT	0.40	19	4,556	4,556	2,550	4	45	1			
Map 2	SR 2190 - Danbury Bridge Rd	From NC 704 TO END PVMT	1.16	20	13,702	13,702	7,580		131			12,260	10,608
Map 3	SR 2185 - H W Cir	From US 220 BUS TO SR 2185 - H W Cir	0.42	19	4,666	4,666	2,566		47		18	4,420	4,420
Map 4	SR 2174 - Lauten Lp	From SR 2177 - E Murphy St TO SR 2177 - E Murphy St	0.57	19	6,397	6,397	3,518		65			6,060	6,060
Map 5	SR 2175 - Will Rd	From SR 2177 - E Murphy St TO SR 2176 - Hayden Rd	0.14	18	1,530	1,530	842		17				
Map 6	SR 2176 - Hayden Rd	From SR 2150 - River Rd TO DEAD END	0.17	18	1,790	1,790	985		19				
Map 7	SR 2212 - Frontage Rd	From US 220 TO END MAINT	0.18	20	2,089	2,089	1,149		20				
Map 8	SR 2197 - Carter Dairy Rd	From NC 135 TO END MAINT	0.50	19	5,652	5,652	3,143		57				
Map 9	SR 2106 - Piney Fork Church Rd	From SR 2108 - Riverside Cir TO DEAD END	1.16	19	12,952	12,952	7,123		131		8	12,270	12,270
Map 10	SR 2156 - Derris Rd	From SR 2155 - Comer Rd TO DEAD END	0.24	19	2,751	2,751	1,552		27				
Map 11	SR 2213 - Pextile Plant Rd	From SR 1603 - S Henry St TO DEAD END	0.46	20	5,344	5,344	2,939		52				
Map 12	SR 2217 - Calvary Rd	From SR 2221 - Eden Rd TO DEAD END	0.26	19	2,934	2,934	1,614		30				
Map 13	SR 1369 - Price St	From SR 1405 - S Glenn St TO SR 1403 - Priddy Rd	0.58	19	6,437	6,437	3,540		65			6,098	6,098
Map 14	SR 1567 - Josephine Rd	From SR 2221 - Eden Rd TO DEAD END	0.23	19	2,554	2,554	1,405		26				
Map 15	SR 1594 - Priddy Lp	From NC 770 E TO SR 2145 - Settle Bridge Rd	1.18	21	14,548	14,548	8,002		133		50	12,470	12,470
Map 16	SR 2104 - Longhook Rd	From NC 87 TO US 311	0.15	20	1,756	1,756	966		17			1,580	1,580
Map 17	SR 2107 - Buttercup Rd	From SR 2108 - Riverside Cir TO DEAD END	0.72	19	8,106	8,106	4,475		82				
Map 18	SR 2108 - Riverside Cir	From BEG LOOP TO END MAINT	3.07	19	34,272	34,272	18,849		345		18	32,468	32,468
Map 19	SR 2111 - Roach Creek Rd	From SR 2108 - Riverside Cir TO END MAINT	0.47	19	5,294	5,294	2,956		53				
Map 20	SR 2112 - Raven Rd	From NC 87 TO END MAINT	0.55	19	6,193	6,193	3,434		62				
Map 21	SR 2132 - Bent Farm Rd	From SR 2148 - Whetstone Creek Rd TO END MAINT	1.27	19	14,247	14,247	7,869		143		20	13,440	13,440
Map 22	SR 2133 - Godsey Farm Rd	From SR 2148 - Whetstone Creek Rd TO SR 2132 - Bent Farm Rd	0.81	19	9,023	9,023	4,963		91			8,548	8,548
Map 23	SR 2142 - Land Rd	From SR 1594 - Priddy Lp TO SR 2286 - Land Rd	0.20	19	2,217	2,217	1,219		23				
Map 24	SR 2286 - Land Rd	From BEG PVMT TO END PVMT	0.03	18	310	310	171		4				
Map 25	SR 2143 - Duck Rd	From SR 2145 - Settle Bridge Rd TO END MAINT	0.35	19	4,001	4,001	2,230		40				
Map 26	SR 2151 - Belton Rd	From SR 2145 - Settle Bridge Rd TO SR 2150 - River Rd	1.71	20	20,078	20,078	11,043		192		24	18,070	16,064
Map 27	SR 2153 - Grogan Rd	From SR 2151 - Belton Rd TO SR 2150 - River Rd	2.78	19	30,949	30,949	17,022		311			29,320	27,700
Map 28	SR 2160 - Stone School Rd	From SR 2249 - Deaton Lp TO END PVMT	0.05	28	809	809	445		6				
Map 29	SR 2178 - Philpott Rd	From SR 2150 - River Rd TO END PVMT	0.57	19	6,323	6,323	3,478		64			5,990	5,990

2023 Rockingham County AST

Project No.

2023CPT.07.05.20792

Sheet No.

9

Map #	SR # Name	Description	Length	Width	ASPHALT SURFACE TREATMENT, DOUBLE SEAL	ASPHALT SURFACE TREATMENT, FOG SEAL	EMULSION FOR ASPHALT SURFACE TREATMENT	VACUUM TRUCK	WORK ZONE ADVANCE/ GENERAL WARNING SIGNING	TEMPORARY TRAFFIC CONTROL	6" HOT SPRAY THERMO (WHITE)	4" HOT SPRAY THERMO (WHITE)	4" HOT SPRAY THERMO YELLOW)
			Miles	(Feet)	SY	SY	GAL	WK	SF	LS	LF	LF	LF
Map 30	SR 2181 - Webster Rd	From SR 2150 - River Rd TO END MAINT	1.14	19	12,775	12,775	7,065		128			12,036	12,036
Map 31	SR 2189 - Mosley Lp	From NC 704 TO NC 704	0.82	20.5	9,858	9,858	5,422		92			8,656	8,656
Map 32	SR 2196 - Titan Berry Rd	From NC 135 TO END PVMT	0.07	20	878	878	483		9				
Map 33	SR 2204 - Poppy Rd	From SR 2192 - Crowder Rd TO END MAINT	0.47	19	5,294	5,294	2,956		53				
Map 34	SR 2223 - Jacobs Creek Rd	From NC 704 TO END MAINT	0.59	19	6,629	6,629	3,646		67				
Map 35	SR 2187 - Mallard Rd	From NC 704 TO END MAINT	0.37	19	4,240	4,240	2,367		42				
Map 36	SR 2191 - Paisley Rd	From BEG PVMT TO END MAINT	0.43	22	5,619	5,619	3,149		48				
Map 37	SR 2220 - Horseshoe Rd	From SR 2174 - Lauten Lp TO END MAINT	0.31	19	3,454	3,454	1,900		35				
Map 38	SR 2222 - Dalton Lp	From NC 770W TO NC 770E	0.27	19	3,029	3,029	1,666		31		18	2,870	2,870
Map 39	SR 2249 - Deaton Lp	From SR 1603 - S Henry St TO SR 1603 - S Henry St	0.19	19	2,101	2,101	1,155		22		20	1,990	1,990
Map 40	SR 2179 - Moyer Rd	From NC 135 TO END MAINT	0.47	19	5,337	5,337	2,974		53				
Map 41	SR 2180 - Valley Field Rd	From NC 135 TO END MAINT	0.60	19	6,733	6,733	3,738		68				
Map 42	SR 1970 - Garden Rd	From SR 1971 - Warren Rd TO END MAINT	0.46	19	5,221	5,221	2,915		52				
Map 43	SR 1971 - Warren Rd	From SR 2282 - S Hamilton St TO END MAINT	0.30	19	3,363	3,363	1,888		34				
Map 44	SR 2134 - Westmoreland Rd	From SR 2132 - Bent Farm Rd TO END MAINT	0.34	19	3,789	3,789	2,084		39				
Map 45	SR 2135 - Tuttle Rd	From SR 2148 - Whetstone Creek Rd TO END MAINT	0.31	19	3,564	3,564	1,999		36				
Map 46	SR 2139 - Saunders Rd	From NC 135 TO DEAD END	0.19	19	2,139	2,139	1,215		21				
Map 47	SR 2147 - Irving Rd	From SR 2148 - Whetstone Creek Rd TO DEAD END	0.84	19	9,399	9,399	5,218		94				
Map 48	SR 2155 - Comer Rd	From SR 2154 - Stone Mountain Rd TO SR 2145 - Settle Bridge Rd	2.15	20	25,244	25,244	13,884		241		38	22,720	19,426
Map 49	SR 2161 - Joyce Farm Rd	From SR 1603 - S Henry St TO END MAINT	0.56	19	6,207	6,207	3,414		63				
Map 50	SR 2163 - Watkins Rd	From SR 2154 - Stone Mountain Rd TO END MAINT	0.48	18	5,089	5,089	2,828		54				
Map 51	SR 2164 - Frye Rd	From US 220 TO DEAD END	1.51	19	16,930	16,930	9,346		170			15,980	15,980
Map 52	SR 2205 - Grassy Springs Road	From NC 135 TO END MAINT	0.09	19	961	961	528		10				
Map 53	SR 2240 - Planters Rd	From NC 704 TO END MAINT	0.76	19	8,559	8,559	4,747		86				
Rockingham County TOTAL FOR PROJECT NO. 2023CPT.07.05.20792			34.11	miles	387,891	387,891	214,212	4	3,846	1	214	227,246	218,674