

**This electronic collection of documents is provided
for the convenience of the user
and is Not a Certified Document –**

**The documents contained herein were originally issued
and sealed by the individuals whose names and license
numbers appear on each page, on the dates appearing
with their signature on that page.**

**This file or an individual page
shall not be considered a certified document.**

5/26/20

2023 CURB RAMP CONTRACT - GUILFORD COUNTY


R-5787L

SHEET NO. 15

NORTH CAROLINA

DEPARTMENT OF TRANSPORTATION

GUILFORD COUNTY



DIVISION 7 DDC UNIT

ROADWAY DESIGN

ENGINEER

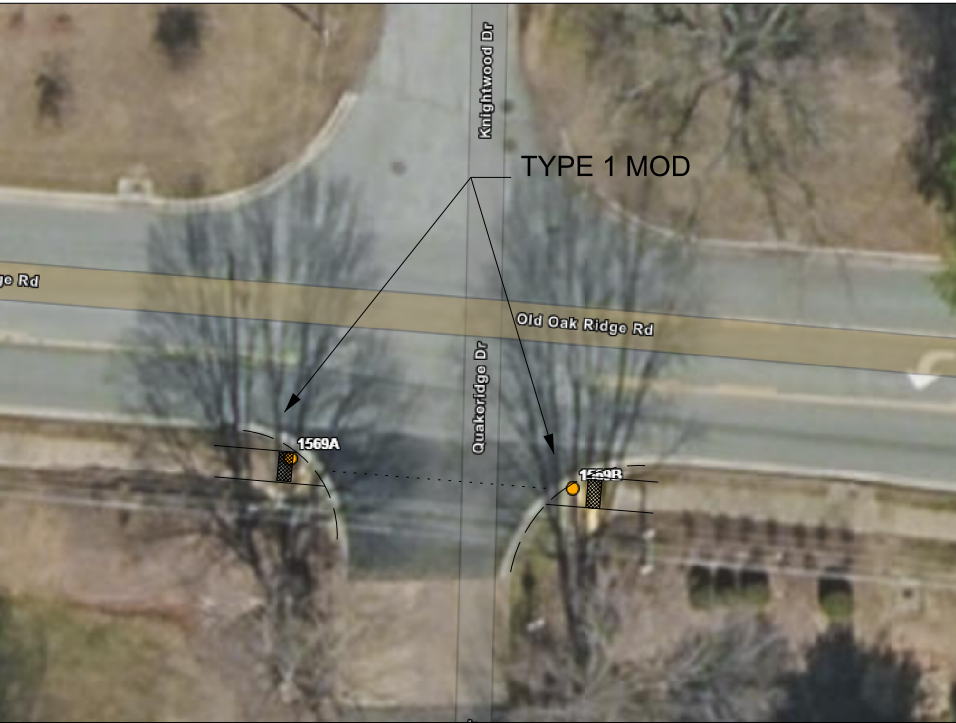
HYDRAULICS
ENGINEER

PREPARED BY

DOCUMENT NOT CONSIDERED FINAL

UNLESS ALL SIGNATURES COMPLETED

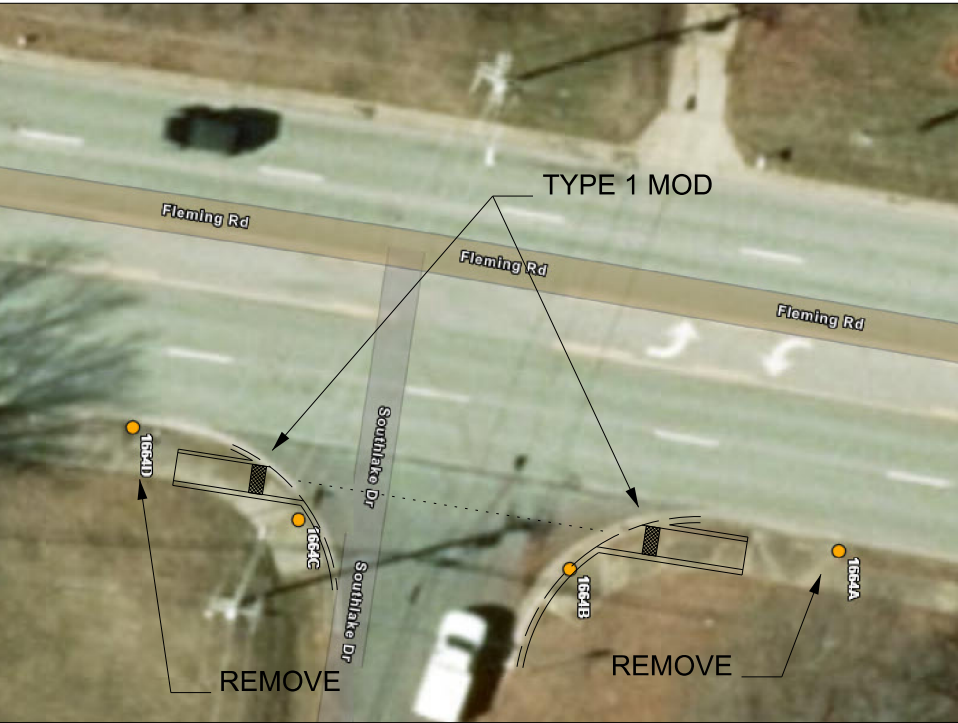
INSET 41: INTER. ID 1569,
SR-2137 (Old Oak Ridge Rd) & Knightwood Dr



REALIGN RAMPS AT
1569 A & B, AS PER
DESIGN

SEED AREAS OUTSIDE
OF PROP. RAMP
AFFECTED BY RAMP
REMOVALS /
RELOCATIONS

INSET 42: INTER. ID 1664,
SR-2136 (Fleming Rd) & Southlake Dr

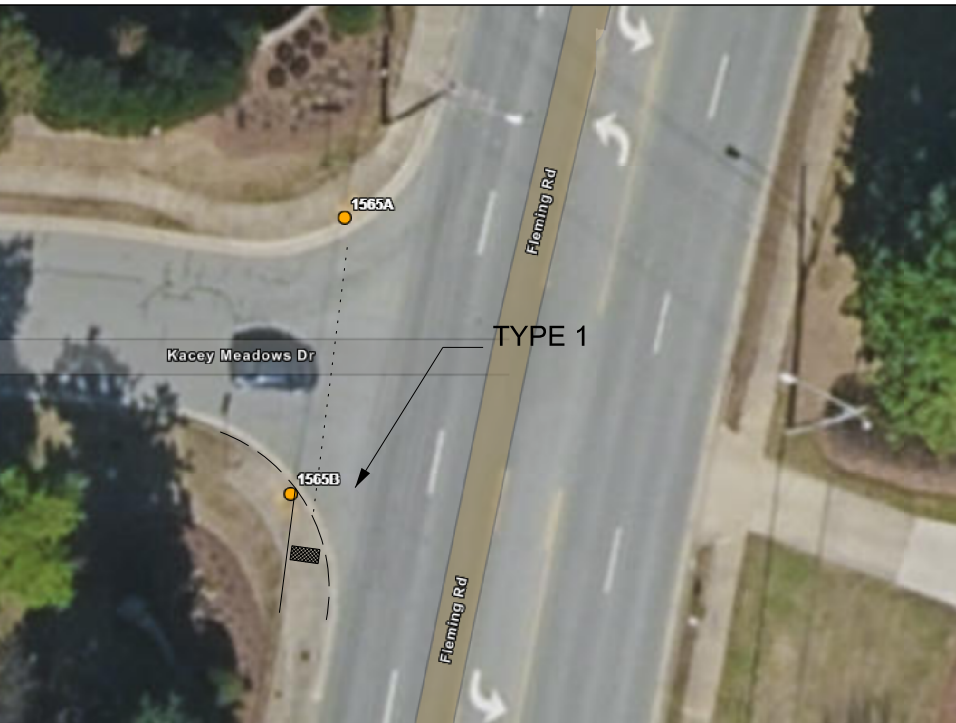


REALIGN RAMPS AT 1664
B & C, AS PER DESIGN

REMOVE RAMPS AT 1664
A & D AND PUT BACK
SIDEWALK

SEED AREAS OUTSIDE
OF PROP. RAMP
AFFECTED BY RAMP
REMOVALS /
RELOCATIONS

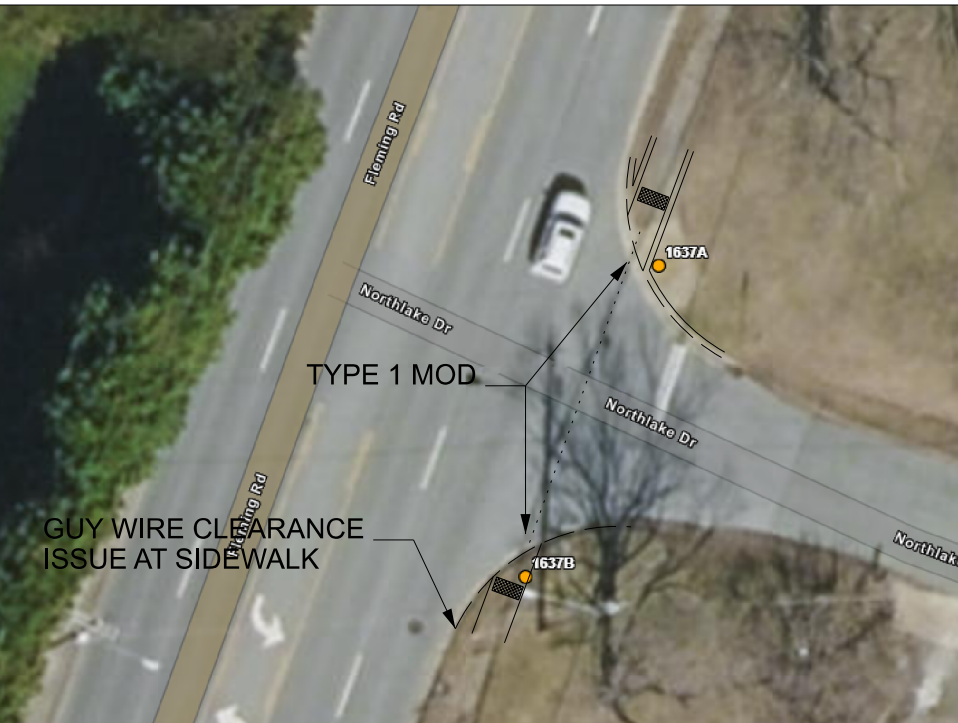
INSET 43: INTER. ID 1565,
SR-2136 (Fleming Rd) & Kacey Meadows Dr



REALIGN RAMP AT
1565A, AS PER DESIGN

SEED AREAS OUTSIDE
OF PROP. RAMP
AFFECTED BY RAMP
REMOVALS /
RELOCATIONS

INSET 44: INTER. ID 1637,
SR-2136 (Fleming Rd) & Northlake Dr



REALIGN RAMP AT 1637
A & B, AS PER DESIGN

SEED AREAS OUTSIDE
OF PROP. RAMP
AFFECTED BY RAMP
REMOVALS /
RELOCATIONS

CONTACT DDC AT 336-
487-0000 TO REACH OUT
TO UTILITY OWNER TO
INSTALL SIDEWALK GUY.
(PROVIDE 6'
CLEARANCE)

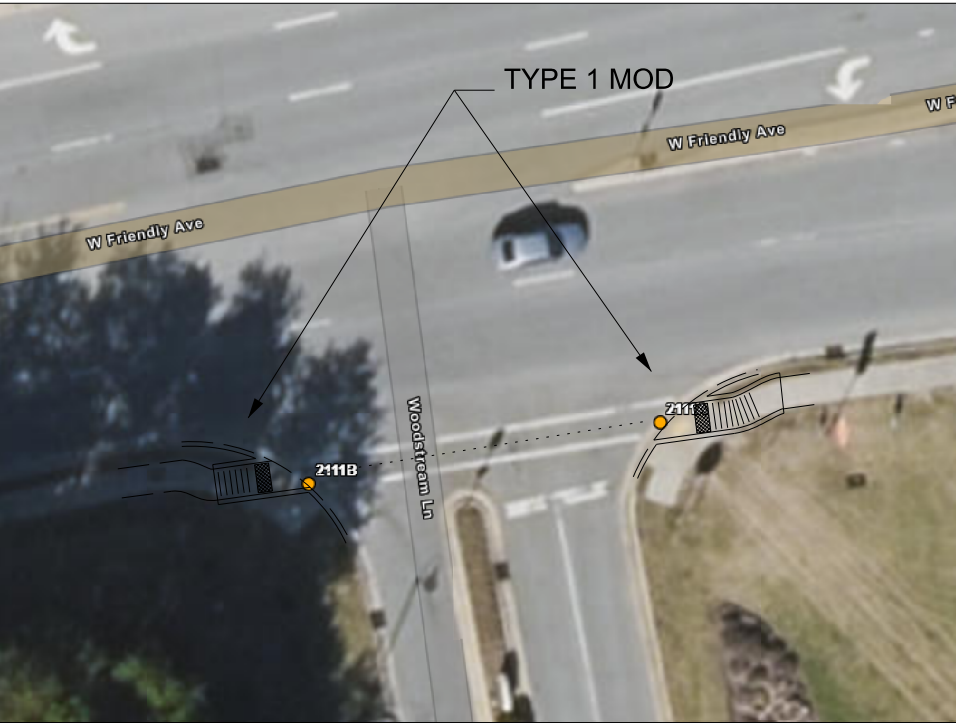


REVISIONS

5/26/20

2023 CURB RAMP CONTRACT - GUILFORD COUNTY

INSET 53: INTER. ID 2111,
SR-2147 (W Friendly Av) & SR-5104 (Woodstream Ln)

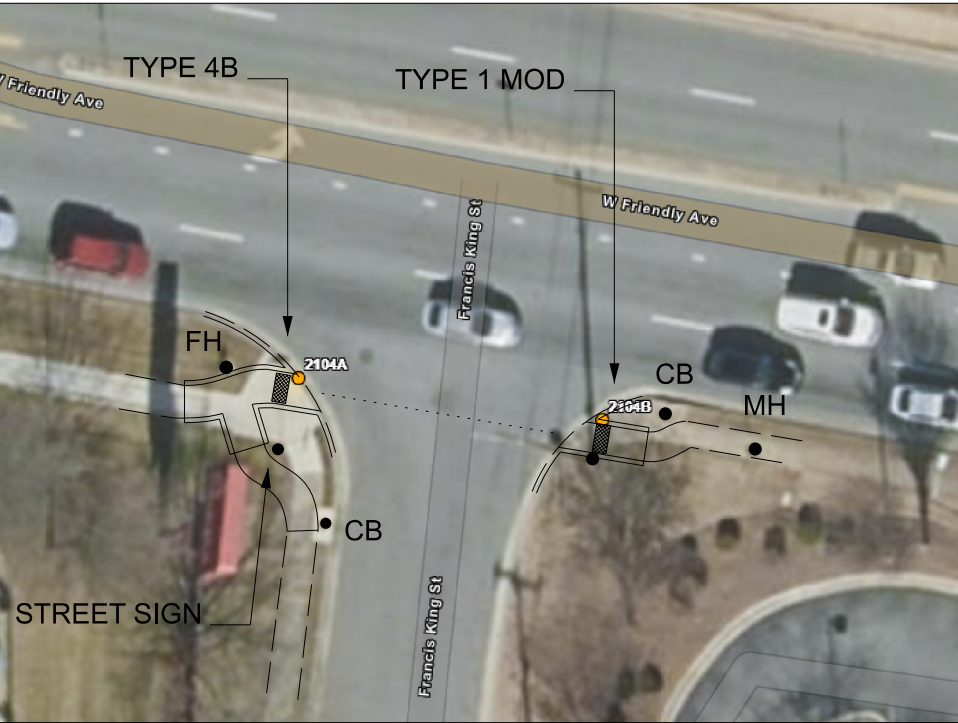


REALIGN RAMP AT 2111 A & B, AS PER DESIGN

SEED AREAS OUTSIDE OF PROP. RAMP AFFECTED BY RAMP REMOVALS / RELOCATIONS

MAINTAIN ALL RAMPS WITHIN EXISTING CROSSWALK LIMITS

INSET 54: INTER. ID 2104,
SR-2147 (W Friendly Av) & Francis King St



CURVE SIDEWALK AROUND STREET SIGN AND REALIGN RAMP AT 2104A, SEE DESIGN.

CURVE SIDEWALK AROUND CATCH BASIN AND REALIGN RAMP AT 2104B, SEE DESIGN.

SEED AREAS OUTSIDE OF PROP. RAMP AFFECTED BY RAMP REMOVALS / RELOCATIONS.

INSET 55: INTER. ID 2358,
SR-1546 (College Rd) & Tomahawk Dr

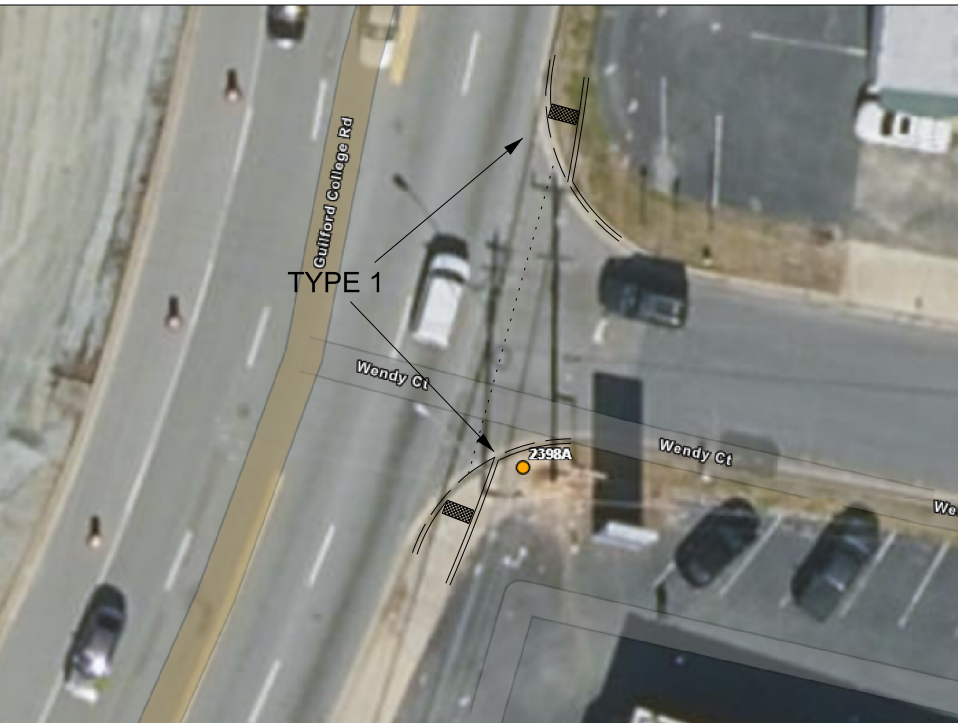


RETROFIT DETECTABLE WARNING DOMES AT 2358 A & B.

EXISTING DOMES INCORRECTLY ALIGNED.

ALIGN THE DOMES IN DIRECTION OF TRAVEL TO OTHER RAMPS. (TYPE 1 DETAIL)

INSET 56 INTER. ID 2398,
SR-1546 (Guilford College Rd) & Wendy Ct



REALIGN RAMP AT 2398 A & B, AS PER DESIGN

SEED AREAS OUTSIDE OF PROP. RAMP AFFECTED BY RAMP REMOVALS / RELOCATIONS

R-5787L

SHEET NO. 18

NORTH CAROLINA

DEPARTMENT OF TRANSPORTATION

GUILFORD COUNTY

DIVISION 7 DDC UNIT

ROADWAY DESIGN ENGINEER

HYDRAULICS ENGINEER

PREPARED BY

DOCUMENT NOT CONSIDERED FINAL UNLESS ALL SIGNATURES COMPLETED

REVISIONS

2023 CURB RAMP CONTRACT - GUILFORD COUNTY

R-5787L

SHEET NO. 16

NORTH CAROLINA

DEPARTMENT OF TRANSPORTATION

GUILFORD COUNTY

Division 7 DDC Unit

ROADWAY DESIGN

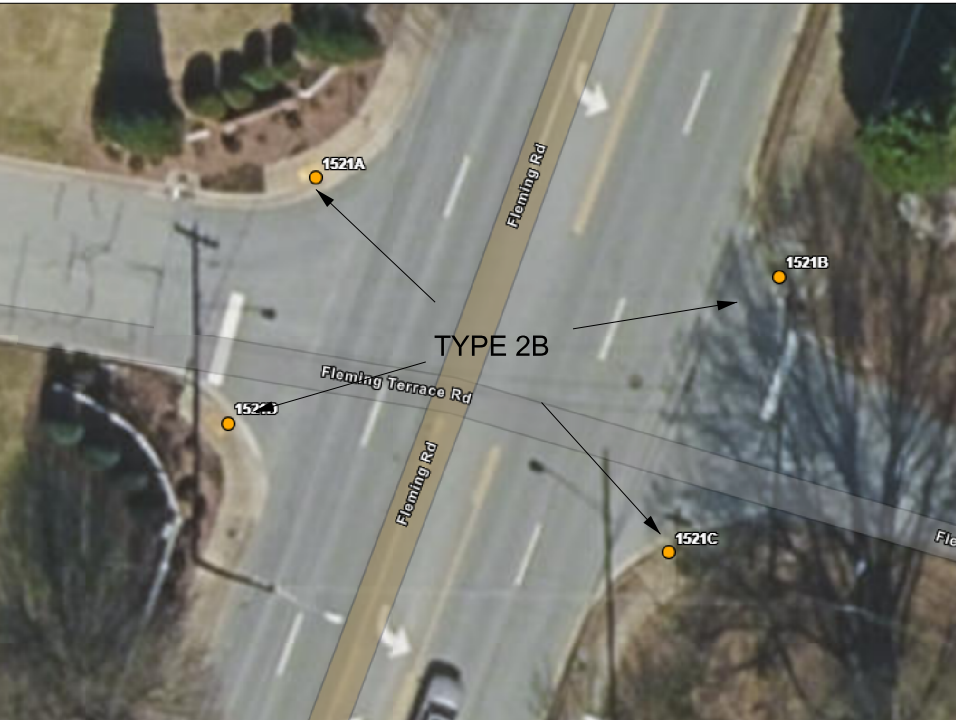
ENGINEER

HYDRAULICS
ENGINEER

PREPARED BY

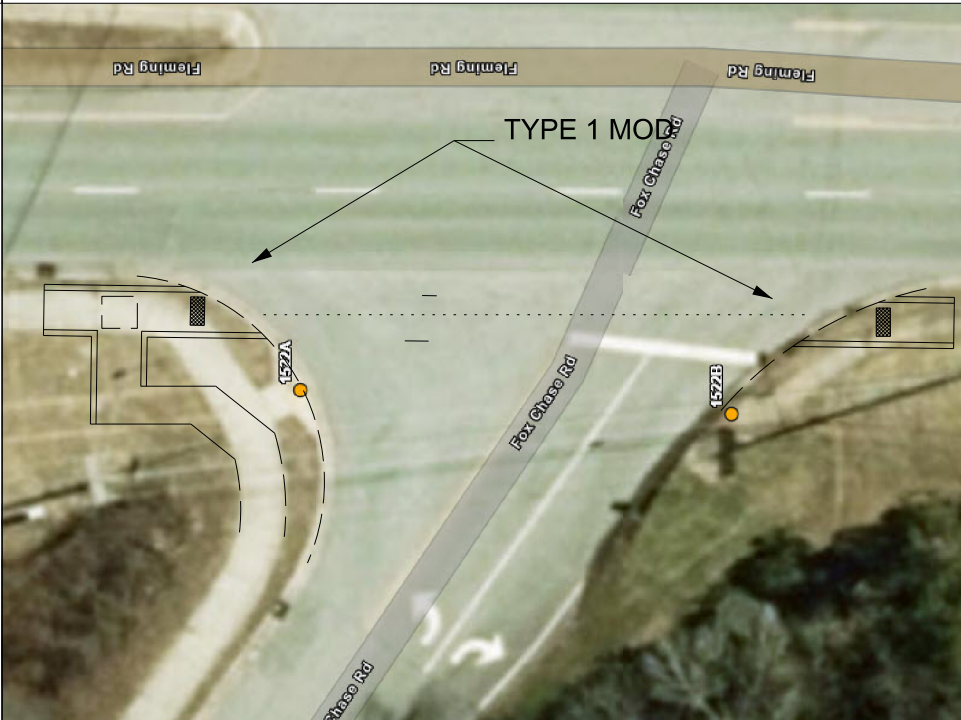
DOCUMENT NOT CONSIDERED FINAL
UNLESS ALL SIGNATURES COMPLETED

INSET 45: INTER. ID 1521,
SR-2136 (Fleming Rd) & Fleming Terrace Rd



BEST FIT RAMPS AT
1521 A, B, C & D TO
SERVE BOTH
DIRECTIONS.

INSET 46: INTER. ID 1522,
SR-2136 (Fleming Rd) & Fox Chase Rd

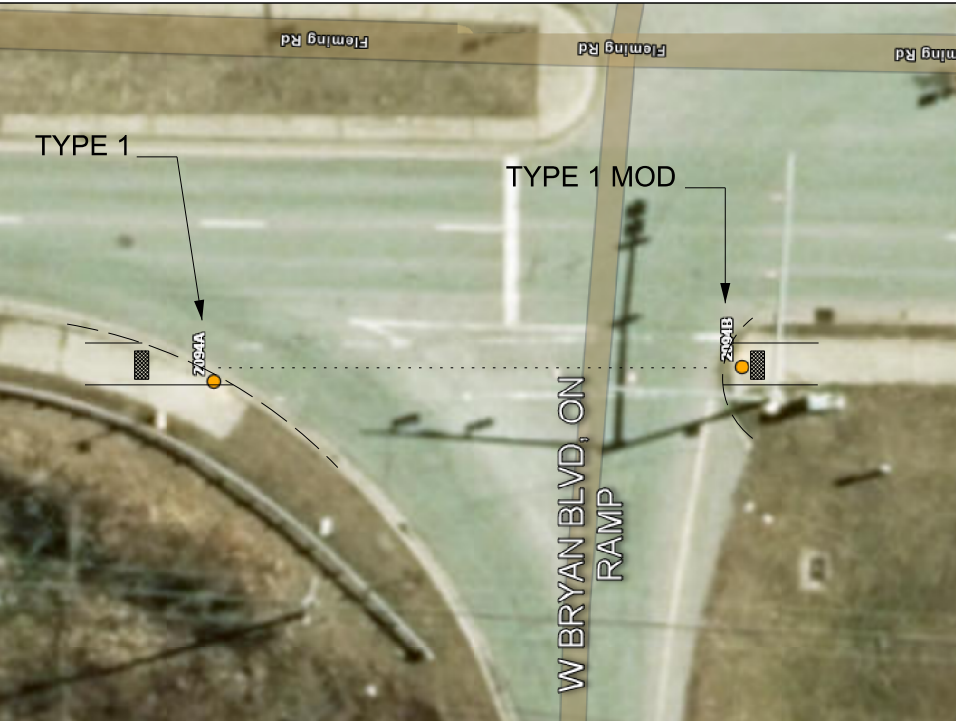


REALIGN SIDEWALK
AND RAMP AT 1522 A &
B, AS PER DESIGN

(ADD ADDITIONAL
SIDEWALK TO MAKE
CONNECTION,
REMOVE EXISTING)

SEED AREAS OUTSIDE
OF PROP. RAMP
AFFECTED BY RAMP
REMOVALS /
RELOCATIONS

INSET 47: INTER. ID 2094,
SR-2136 (Fleming Rd) & RMP-4204/4203 (Ramp Bryan Blvd)

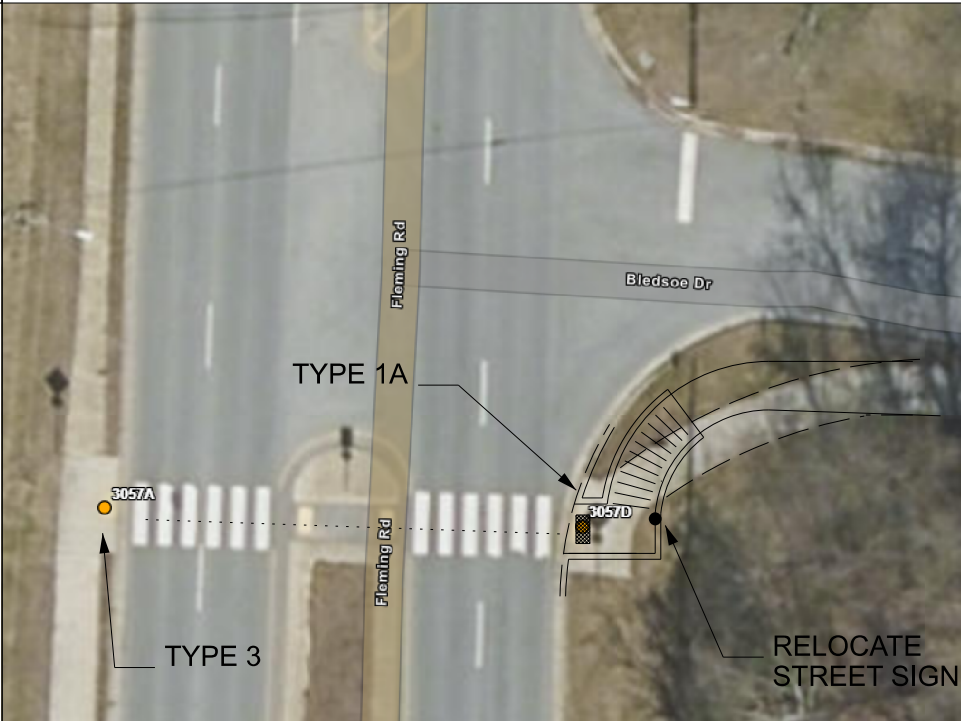


REALIGN RAMPS AT
2094 A & B, AS PER
DESIGN

SEED AREAS OUTSIDE
OF PROP. RAMP
AFFECTED BY RAMP
REMOVALS /
RELOCATIONS

MAINTAIN RAMPS
WITHIN EXISTING
CROSSWALK LIMITS.

INSET 48: INTER. ID 3057,
SR-2136 (Fleming Rd) & Bledsoe Dr



REALIGN RAMPS AT
3057 A & D, AS PER
DESIGN

(REALIGN SIDEWALK,
REMOVE EXISTING)

SEED AREAS OUTSIDE
OF PROP. RAMP
AFFECTED BY RAMP
REMOVALS /
RELOCATIONS

PLACE RAMPS BACK
WITHIN EXISTING HI-
VIS CROSSWALK
LIMITS.



REVISIONS

2023 CURB RAMP CONTRACT - GUILFORD COUNTY

R-5787L

SHEET NO. 20

NORTH CAROLINA

DEPARTMENT OF TRANSPORTATION

GUILFORD COUNTY

STATE OF NORTH CAROLINA

DEPARTMENT OF TRANSPORTATION

GUILFORD COUNTY

DIVISION 7 DDC UNIT

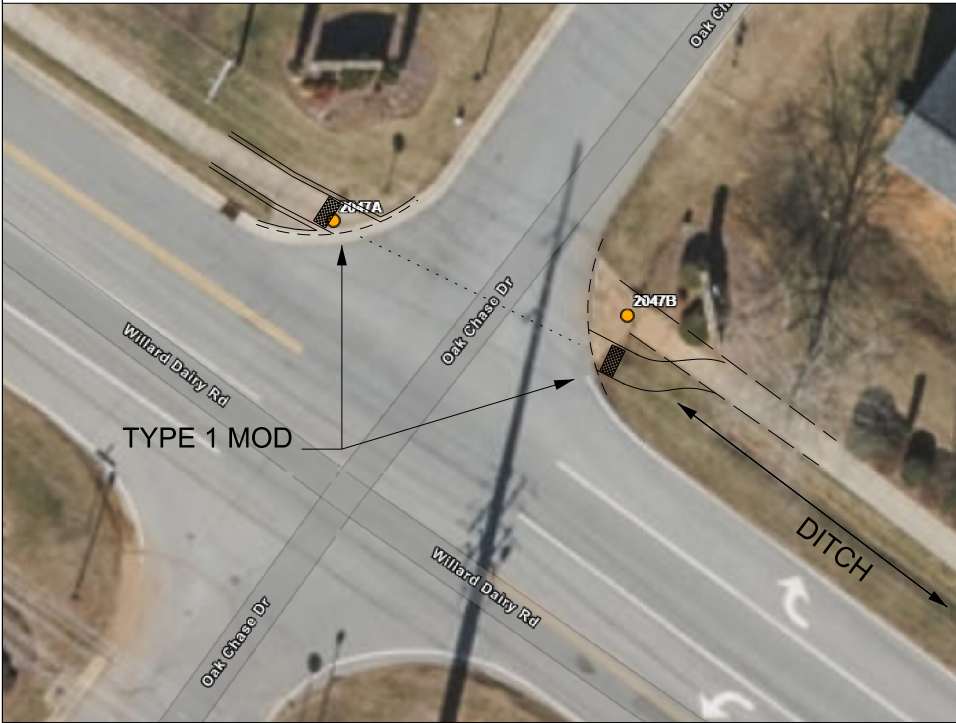
ROADWAY DESIGN ENGINEER

HYDRAULICS ENGINEER

PREPARED BY

DOCUMENT NOT CONSIDERED FINAL
UNLESS ALL SIGNATURES COMPLETED

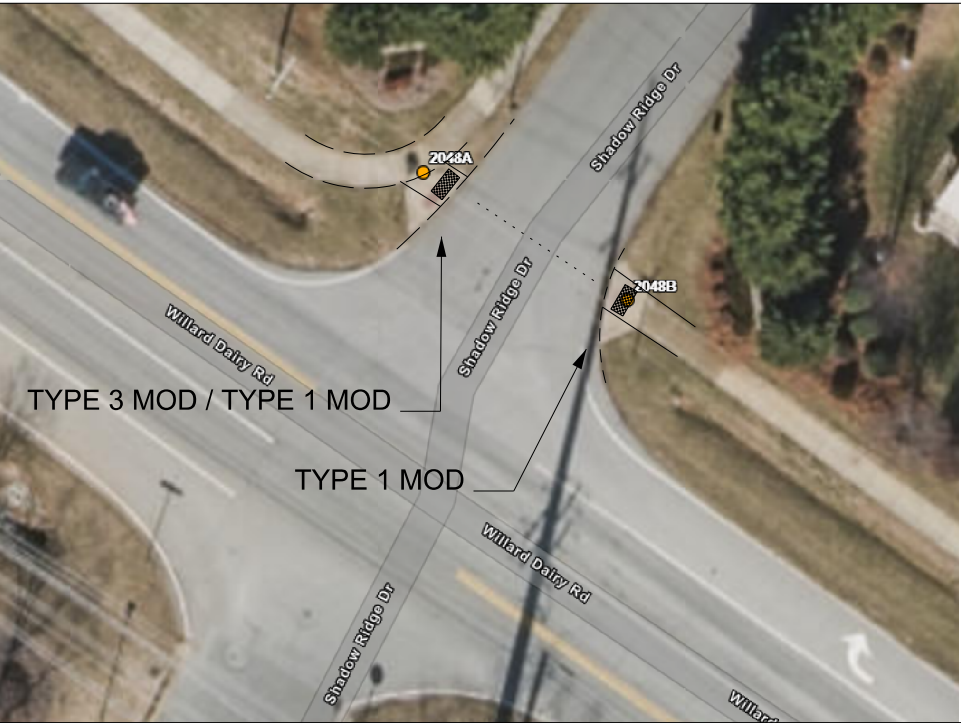
INSET 61: INTER. ID 2047,
SR-1836 (Willard Dairy Rd) & Oak Chase Dr



REALIGN RAMP AT 2047 A & B, AS PER DESIGN

SEED AREAS OUTSIDE OF PROP. RAMP AFFECTED BY RAMP REMOVALS / RELOCATIONS

INSET 62: INTER. ID 2048,
SR-1836 (Willard Dairy Rd) & Shadow Ridge Dr

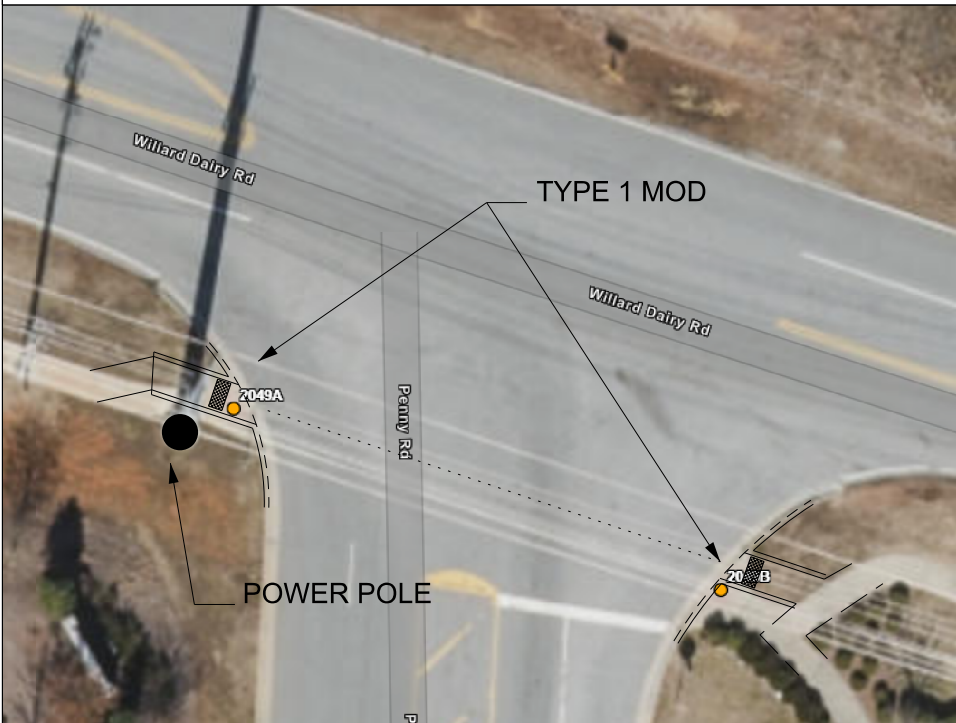


REALIGN RAMP AT 2048 A & B, AS PER DESIGN

BEST FIT BETWEEN TYPE 1 MOD AND 3 MOD AT 2048 A.

SEED AREAS OUTSIDE OF PROP. RAMP AFFECTED BY RAMP REMOVALS / RELOCATIONS

INSET 63 INTER. ID 2049,
SR-1836 (Willard Dairy Rd) & Penny Rd

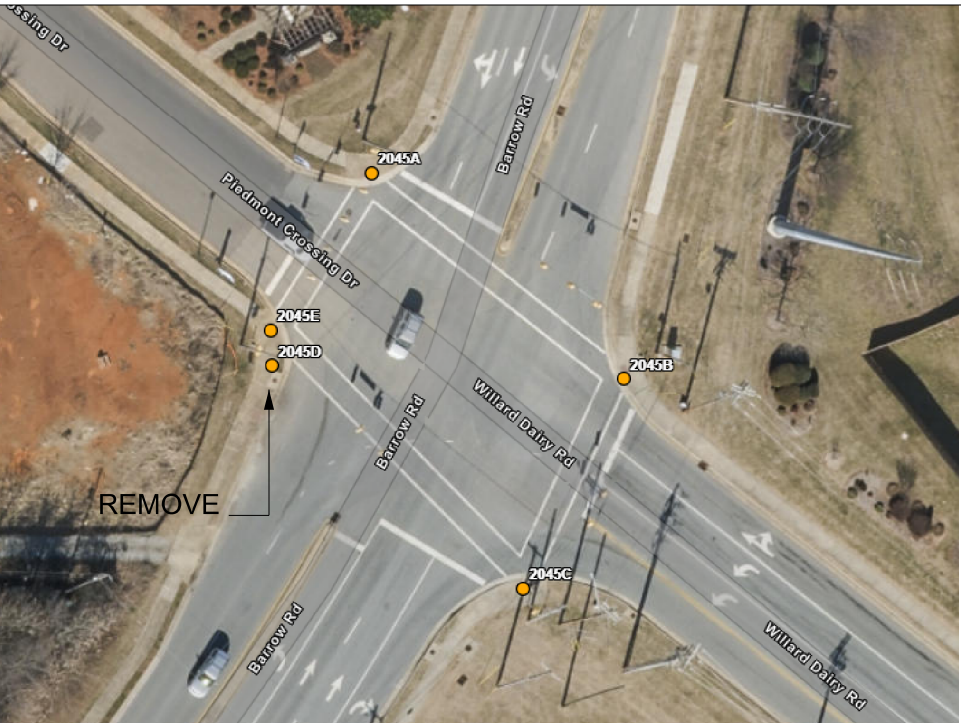


REALIGN SIDEWALK AND RAMP AT 2049 A & B, AS PER DESIGN.

ADD / REMOVE ADDITIONAL SIDEWALK AS ILLUSTRATED. SNAKE SIDEWALK AROUND THE POWER POLE.

SEED AREAS OUTSIDE OF PROP. RAMP AFFECTED BY RAMP REMOVALS / RELOCATIONS

INSET 64: INTER. ID 2045,
SR-1836 (Willard Dairy Rd) & Barrow Rd



REMOVE THE RAMP AND PLACE SIDEWALK BACK.



REVISIONS

2023 CURB RAMP CONTRACT - GUILFORD COUNTY


R-5787L

SHEET NO. 19

NORTH CAROLINA

DEPARTMENT OF TRANSPORTATION

GUILFORD COUNTY



DIVISION 7 DDC UNIT

ROADWAY DESIGN ENGINEER

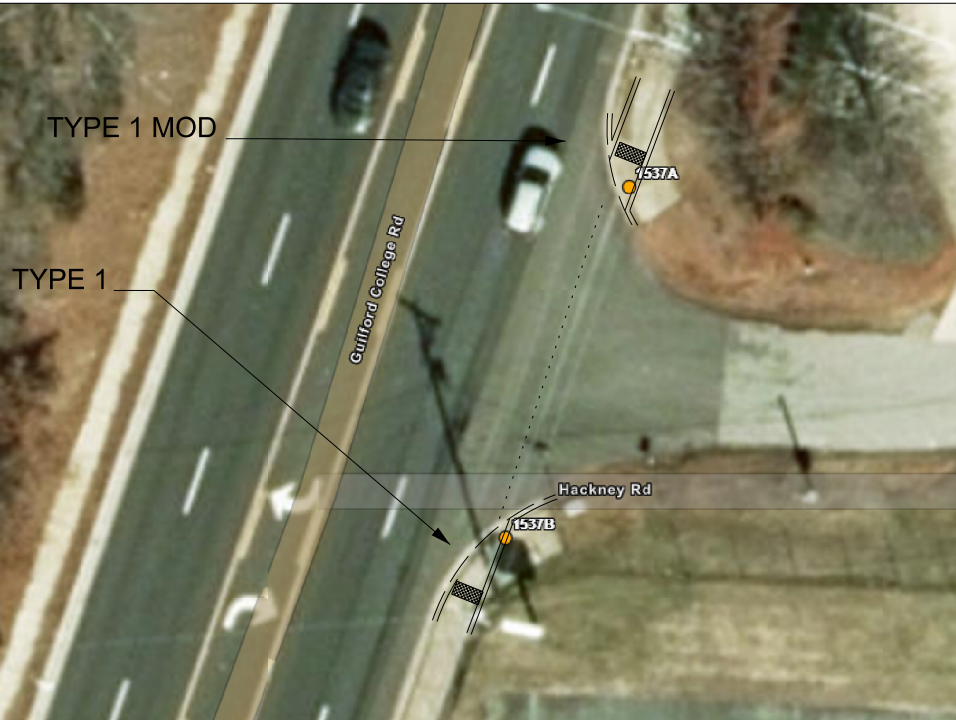
HYDRAULICS ENGINEER

PREPARED BY

DOCUMENT NOT CONSIDERED FINAL

UNLESS ALL SIGNATURES COMPLETED

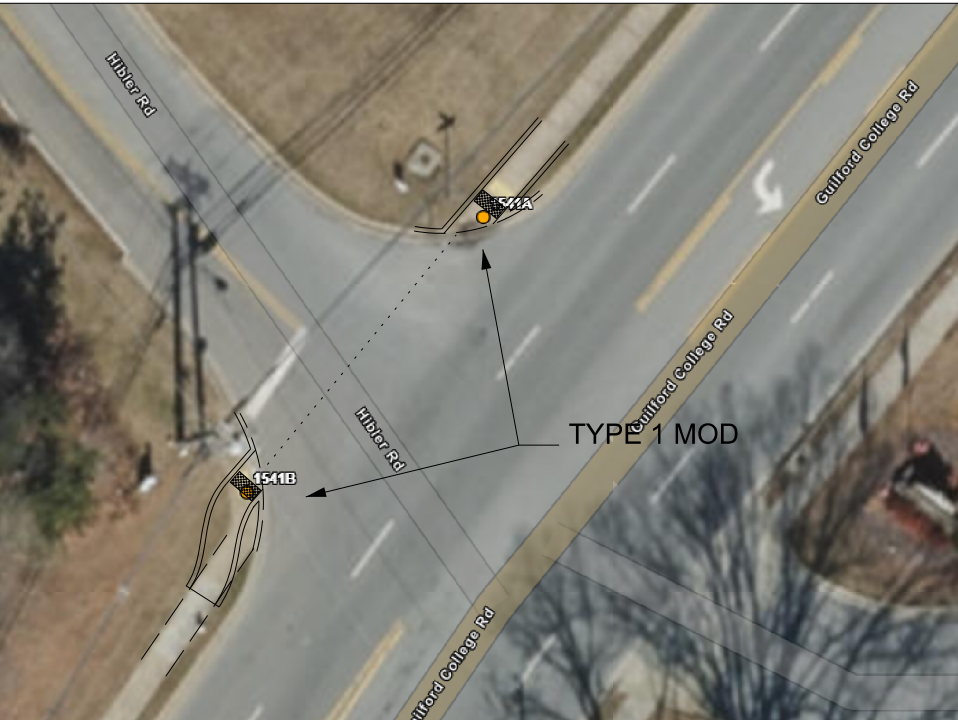
INSET 57: INTER. ID 1537,
SR-1546 (Guilford College Rd) & Hackney Rd



REALIGN RAMP AT 1537
A & B, AS PER DESIGN

SEED AREAS OUTSIDE
OF PROP. RAMP
AFFECTED BY RAMP
REMOVALS /
RELOCATIONS

INSET 58: INTER. ID 1541,
SR-1546 (Guilford College Rd) & Hibler Rd

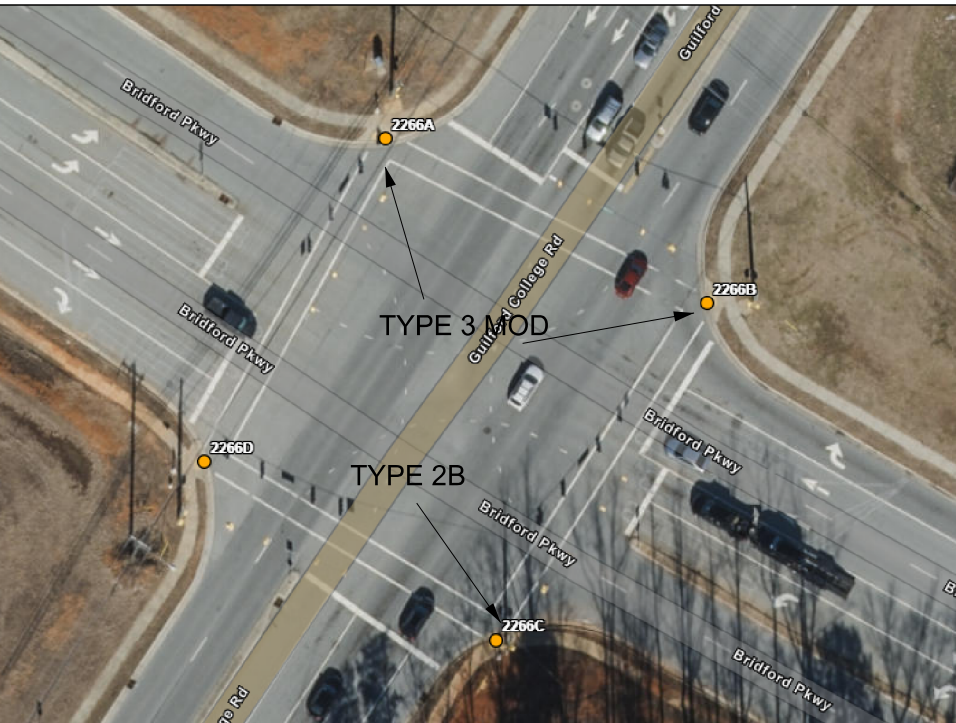


ALIGN RAMP AT 1541A,
AS PER DESIGN.

CURVE SIDEWALK AND
ALIGN RAMP AS
ILLUSTRATED AT 1541B.

SEED AREAS OUTSIDE
OF PROP. RAMP
AFFECTED BY RAMP
REMOVALS/
RELOCATIONS.

INSET 59: INTER. ID 2266,
SR-4126 (Bridford Pkwy) & SR-1546 (Guilford College Rd)

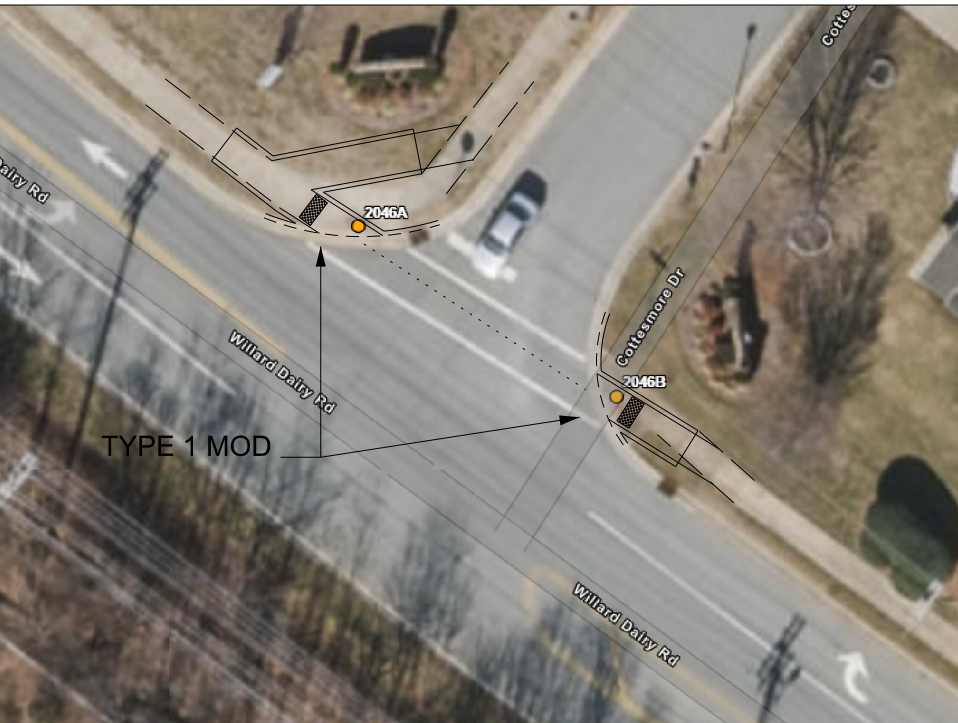


UPGRADE RAMPS AT
2266 A & B TO TYPE 3
MOD.

UPGRADE RAMP AT
2266C TO TYPE 2B.

MAINTAIN ALL RAMPS
WITHIN EXISTING
SIDEWALK LIMITS.

INSET 60: INTER. ID 2046,
SR-1836 (Willard Dairy Rd) & Cottesmore Dr



REALIGN SIDEWALK
AND RAMP AT 2046 A, AS
PER DESIGN (REMOVE
EXIST. AND PROVIDE
NEW SIDEWALK
CONNECTION)

ALIGN RAMP AT 2046B,
AS PER DESIGN.

SEED AREAS OUTSIDE
OF PROP. RAMP
AFFECTED BY RAMP
REMOVALS /
RELOCATIONS

MAINTAIN RAMPS
WITHIN EXISTING
CROSSWALK LIMITS.



REVISIONS

2023 CURB RAMP CONTRACT - GUILFORD COUNTY


R-5787L

SHEET NO. 21

NORTH CAROLINA

DEPARTMENT OF TRANSPORTATION

GUILFORD COUNTY



DIVISION 7 DDC UNIT

ROADWAY DESIGN ENGINEER

HYDRAULICS ENGINEER

PREPARED BY

DOCUMENT NOT CONSIDERED FINAL

UNLESS ALL SIGNATURES COMPLETED



REVISIONS

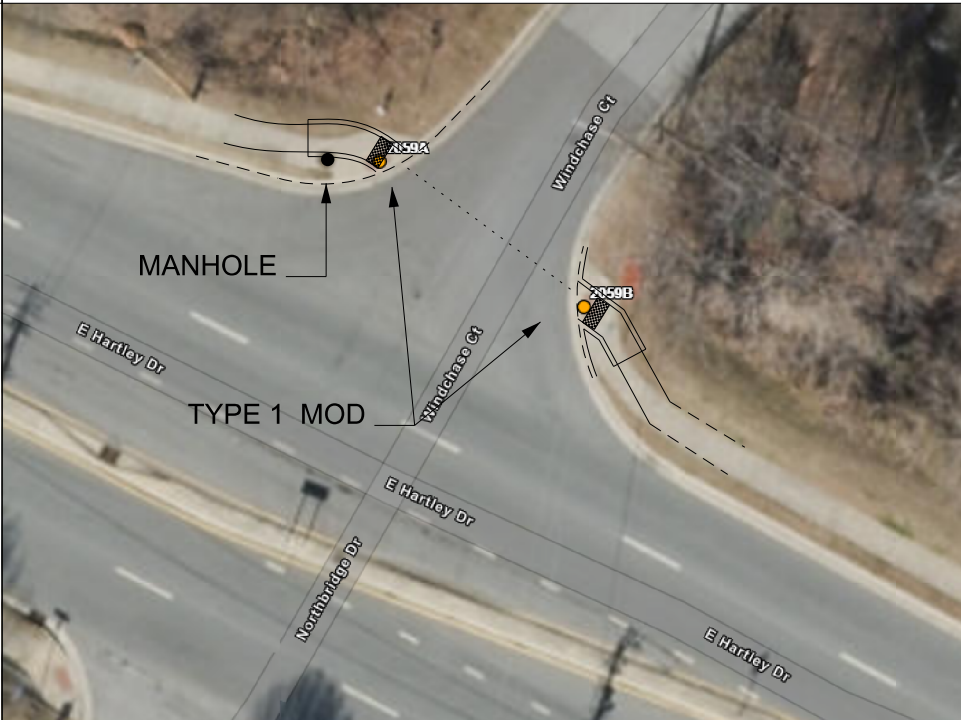
INSET 65: INTER. ID 2311,
SR-5002 (Boulder Rd) & Entrance to Gasline Tank field



REALIGN RAMPS AT 2311
A & B, TO EACH OTHER

SEED AREAS OUTSIDE
OF PROP. RAMP
AFFECTED BY RAMP
REMOVALS /
RELOCATIONS

INSET 66: INTER. ID 2059,
SR-1896 (E Hartley Dr) & Windchase Ct



REALIGN RAMPS AT
2059 A & B, AS PER
DESIGN

2059A - CURVE
SIDEWALK AROUND
THE MANHOLE.

SEED AREAS OUTSIDE
OF PROP. RAMP
AFFECTED BY RAMP
REMOVALS /
RELOCATIONS

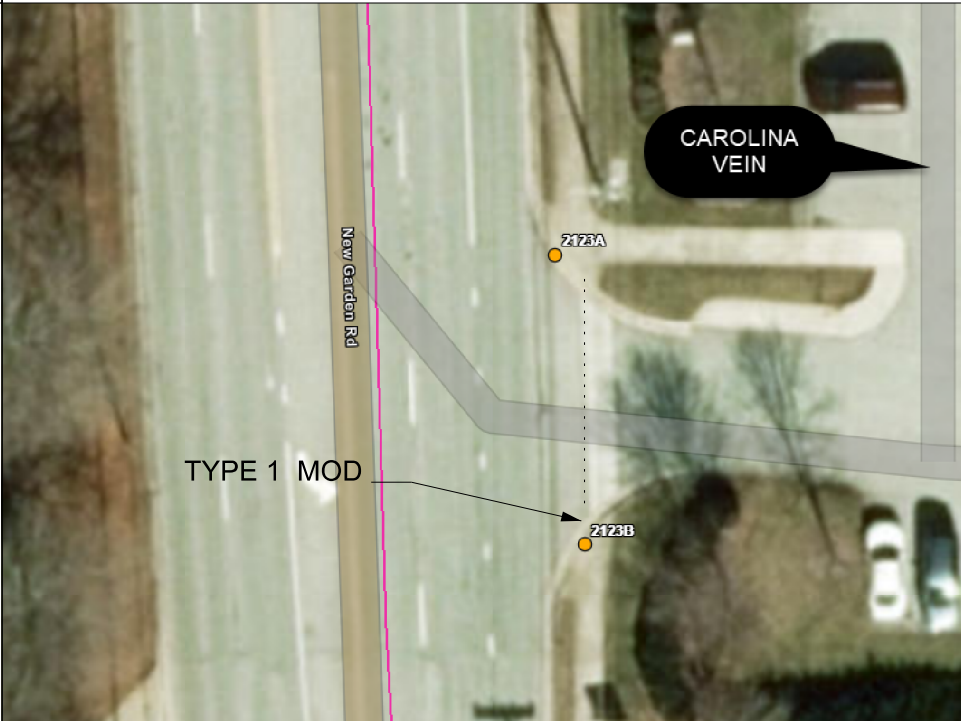
INSET 67: INTER. ID 2092,
SR-2136 (Fleming Rd) & SECU Entrance



REALIGN RAMPS AT 2092
A & B, TO EACH OTHER

SEED AREAS OUTSIDE
OF PROP. RAMP
AFFECTED BY RAMP
REMOVALS /
RELOCATIONS

INSET 68: INTER. ID 2123,
SR-2179 (New Garden Rd) & Carolina Vein Specialist Entrance



REALIGN RAMP AT
2123 B TO 2123 A.

SEED AREAS OUTSIDE
OF PROP. RAMP
AFFECTED BY RAMP
REMOVALS /
RELOCATIONS

2023 CURB RAMP CONTRACT - GUILFORD COUNTY


R-5787L

SHEET NO. 22

NORTH CAROLINA

DEPARTMENT OF TRANSPORTATION

GUILFORD COUNTY



DIVISION 7 DDC UNIT

ROADWAY DESIGN ENGINEER

HYDRAULICS ENGINEER

PREPARED BY

DOCUMENT NOT CONSIDERED FINAL

UNLESS ALL SIGNATURES COMPLETED

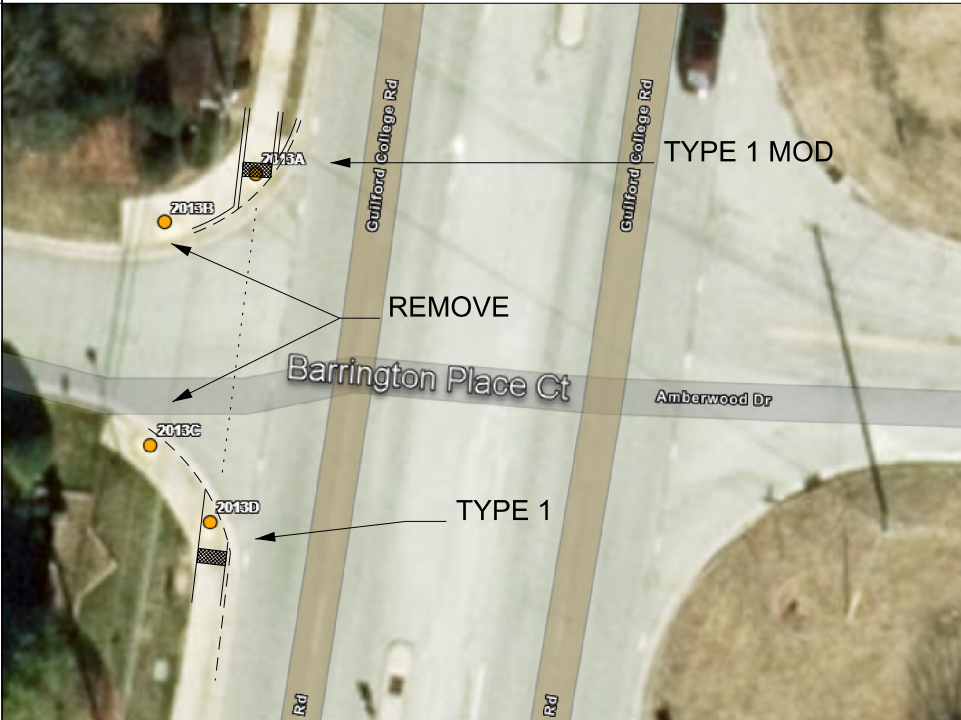
INSET 69 INTER. ID 1644,
SR-2136 (Fleming Rd) & Pasquinelli Pl



REALIGN RAMPS AT 1644 A & B, AS PER DESIGN.

SEED AREAS OUTSIDE OF PROP. RAMP AFFECTED BY RAMP REMOVALS / RELOCATIONS

INSET 70: INTER. ID 2013,
SR-1546 (Guilford College Rd) & Barrington Place Ct

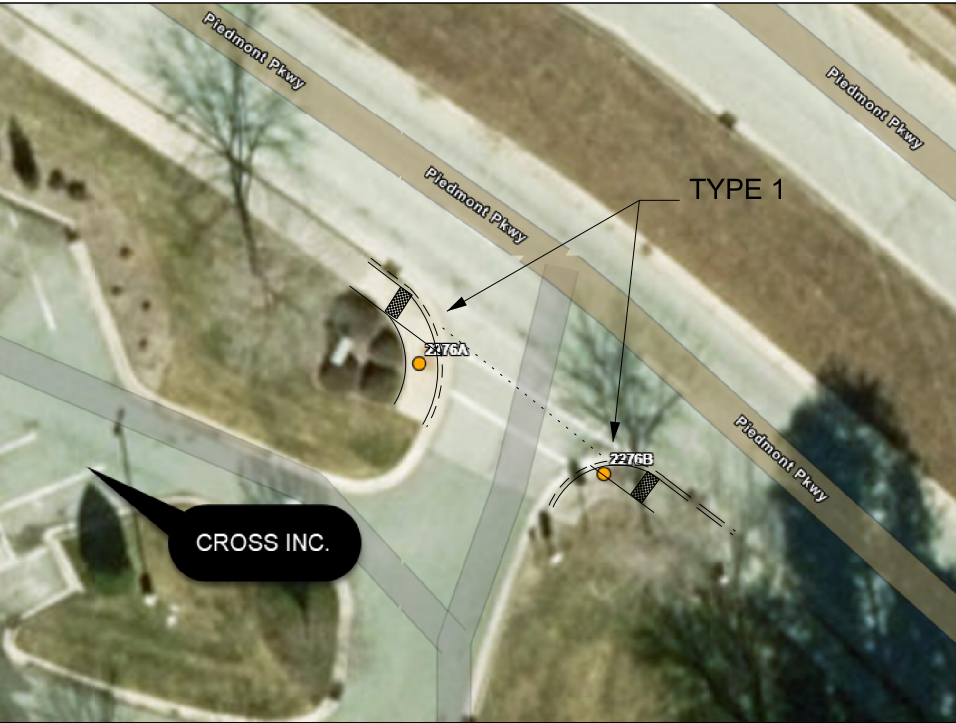


REMOVE RAMPS 2013 B AND C. DO NOT ADD SIDEWALK BACK

SEED AREAS OUTSIDE OF PROP. RAMP AFFECTED BY RAMP REMOVALS / RELOCATIONS

REALIGN RAMPS AT 2013 A & D, AS PER DESIGN.

INSET 71 INTER. ID 2276,
SR-4187 (Piedmont Pkwy) & Cross Inc. Entrance

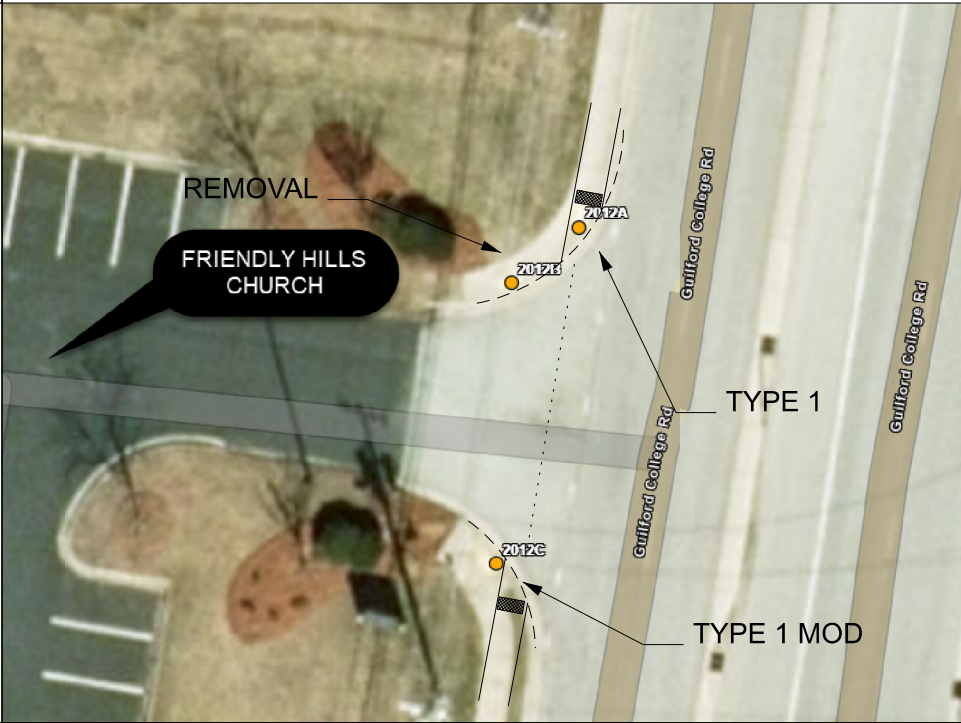


REALIGN RAMP AT 2276 A & B, AS PER DESIGN.

SEED AREAS OUTSIDE OF PROP. RAMP AFFECTED BY RAMP REMOVALS / RELOCATIONS

PLACE RAMPS IN EXISTING CROSSWALK LIMITS, IF POSSIBLE. IF NOT, RELOCATE THE CROSSWALK.

INSET 72: INTER. ID 2012,
SR-1546 (Guilford College Rd) & Friendly Hills Church Entrance



REMOVE RAMP AT 2012B AND SEED THE AREA.

RELOCATE AND ALIGN THE RAMPS AT 2012 A & C, AS ILLUSTRATED.

REVISIONS

2023 CURB RAMP CONTRACT - GUILFORD COUNTY

R-5787L

SHEET NO. 17

NORTH CAROLINA

DEPARTMENT OF TRANSPORTATION

GUILFORD COUNTY

ROADWAY DESIGN

ENGINEER

HYDRAULICS

ENGINEER

PREPARED BY

DOCUMENT NOT CONSIDERED FINAL
UNLESS ALL SIGNATURES COMPLETED

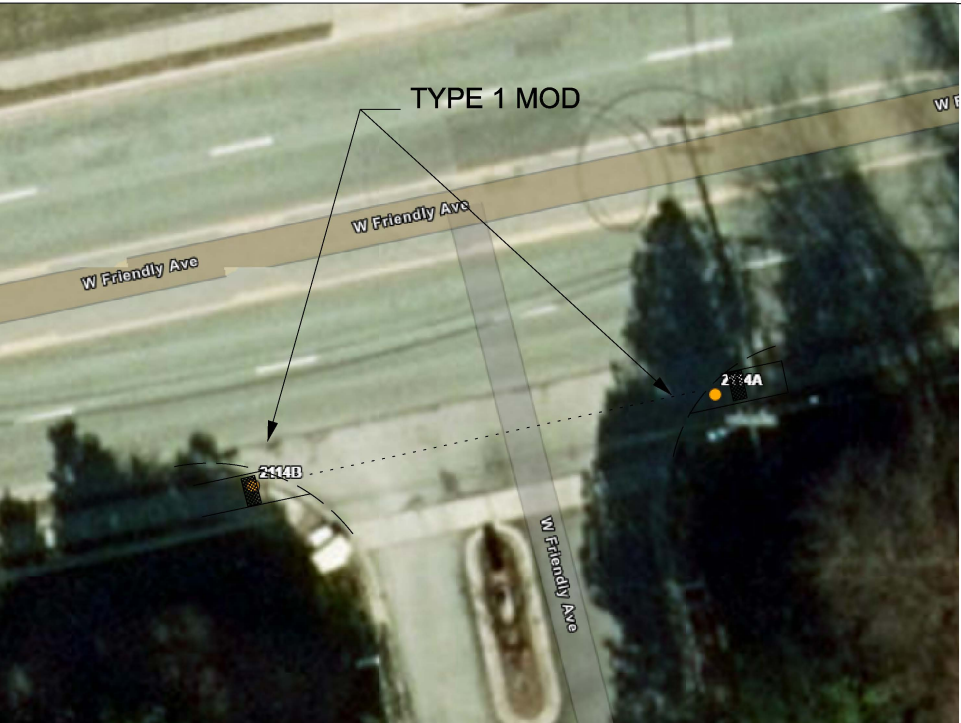
INSET 49 INTER. ID 2119,
SR-2147 (W Friendly Av) & Sheetz Entrance



REALIGN RAMP AT 2119A,
AS PER DESIGN

SEED AREAS OUTSIDE
OF PROP. RAMP
AFFECTED BY RAMP
REMOVALS /
RELOCATIONS

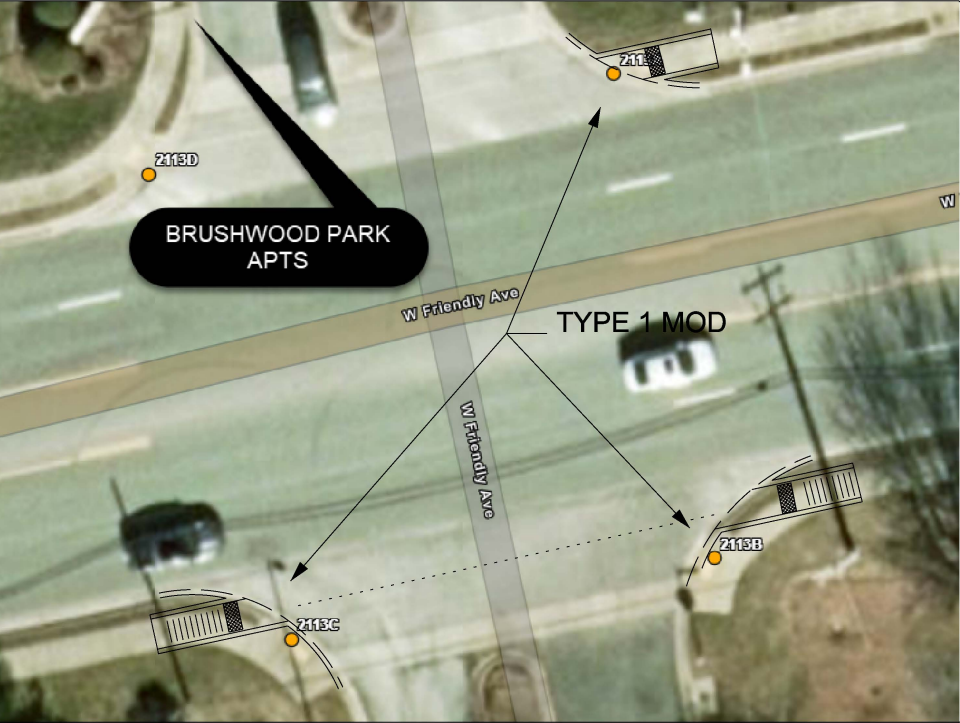
INSET 50: INTER. ID 2114,
SR-2147 (W Friendly Av) & Friendly Plantation Condos



REALIGN RAMP AT 2114
A & B, AS PER DESIGN

SEED AREAS OUTSIDE
OF PROP. RAMP
AFFECTED BY RAMP
REMOVALS /
RELOCATIONS

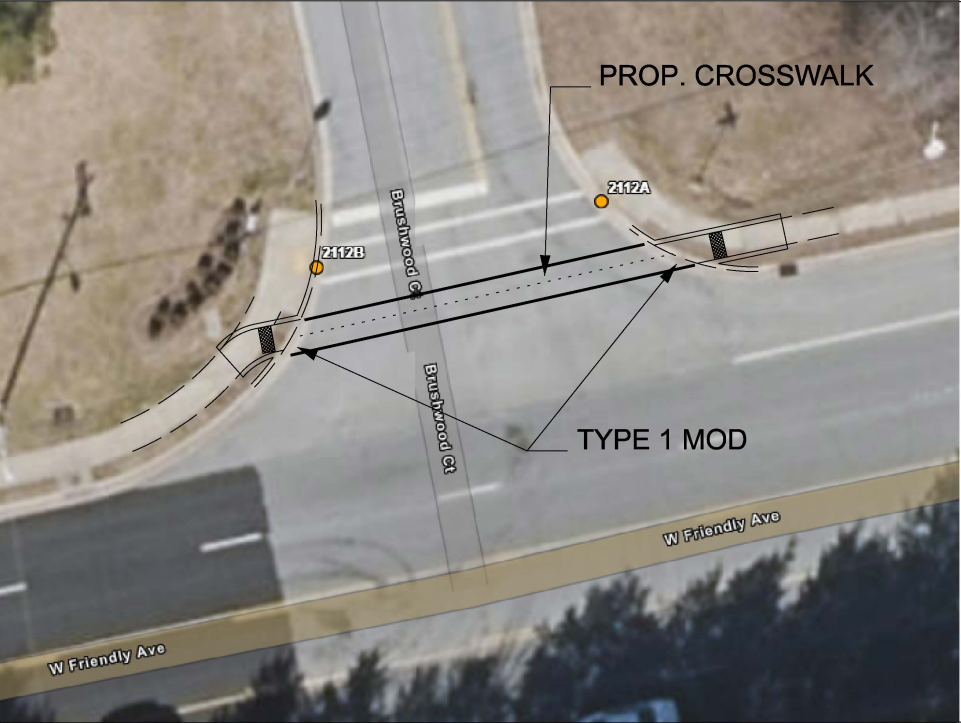
INSET 51: INTER. ID 2113,
SR-2147 (W Friendly Av) & Autumn Park Apt



REALIGN RAMP AT 2113
A, B & C, AS PER DESIGN

SEED AREAS OUTSIDE
OF PROP. RAMP
AFFECTED BY RAMP
REMOVALS /
RELOCATIONS

INSET 52: INTER. ID 2112,
SR-2147 (W Friendly Av) & SR-5103 (Brushwood Ct)



REALIGN SIDEWALK AND
RAMP AT 2112 A & B, AS
PER DESIGN

SEED AREAS OUTSIDE
OF PROP. RAMP
AFFECTED BY RAMP
REMOVALS /
RELOCATIONS

RELOCATE
CROSSWALK, AS PER
DESIGN.

REVISIONS

2023 CURB RAMP CONTRACT - GUILFORD COUNTY

R-5787L

SHEET NO. 24

NORTH CAROLINA
DEPARTMENT OF TRANSPORTATION
GUILFORD COUNTY



DIVISION 7 DDC UNIT
ROADWAY DESIGN
ENGINEER

HYDRAULICS
ENGINEER

PREPARED BY



DOCUMENT NOT CONSIDERED FINAL
UNLESS ALL SIGNATURES COMPLETED

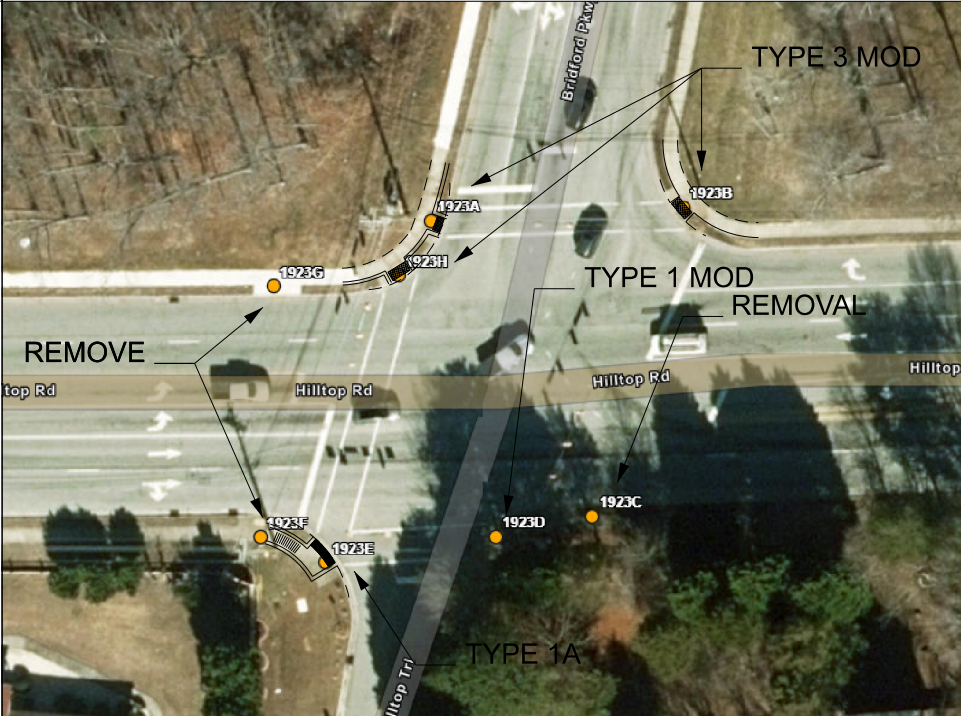
INSET 77: INTER. ID 1922,
SR-1424 (Hilltop Rd) & MacGregor Pl Entrance



REALIGN RAMPS AT
1922 A & B, AS PER
DESIGN.

SEED AREAS OUTSIDE
OF PROP. RAMP
AFFECTED BY RAMP
REMOVALS /
RELOCATIONS

INSET 78: INTER. ID 1923,
SR-1424 (Hilltop Rd) & Bridford Pkwy



REALIGN THE RAMPS AT
1923 A, B & H TO TYPE 3
MOD, AS ILLUSTRATED.

REMOVE RAMPS AT
1923 C, F & G AND
PLACE SIDEWALK
CONNECTION BACK.

PLACE TYPE 1 MOD
(BEST FIT) AT 1923D

BEST FIT TYPE 1A AT
1923 E.

PLACE RAMPS IN THE
EXISTING CROSSWALK
LIMITS.

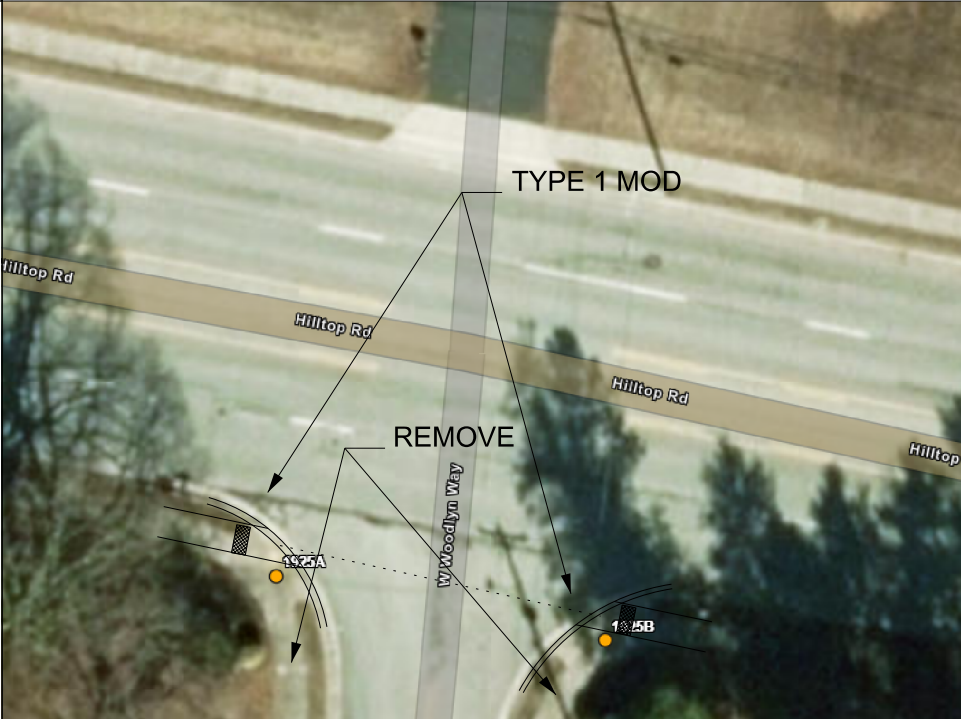
INSET 79: INTER. ID 1924,
SR-1424 (Hilltop Rd) & Abbington Place Apts



REALIGN RAMPS AT 1924
A & B, AS PER DESIGN.

SEED AREAS OUTSIDE
OF PROP. RAMP
AFFECTED BY RAMP
REMOVALS /
RELOCATIONS

INSET 80: INTER. ID 1925,
SR-1424 (Hilltop Rd) & W Woodlyn Way



REALIGN RAMPS AT
1925 A & B, AS PER
DESIGN.

SEED AREAS OUTSIDE
OF PROP. RAMP
AFFECTED BY RAMP
REMOVALS /
RELOCATIONS

REMOVE ADDITIONAL
SIDEWALK.

REVISIONS

2023 CURB RAMP CONTRACT - GUILFORD COUNTY


R-5787L

SHEET NO. 25

NORTH CAROLINA

DEPARTMENT OF TRANSPORTATION

GUILFORD COUNTY

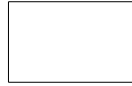


DIVISION 7 DDC UNIT

ROADWAY DESIGN ENGINEER

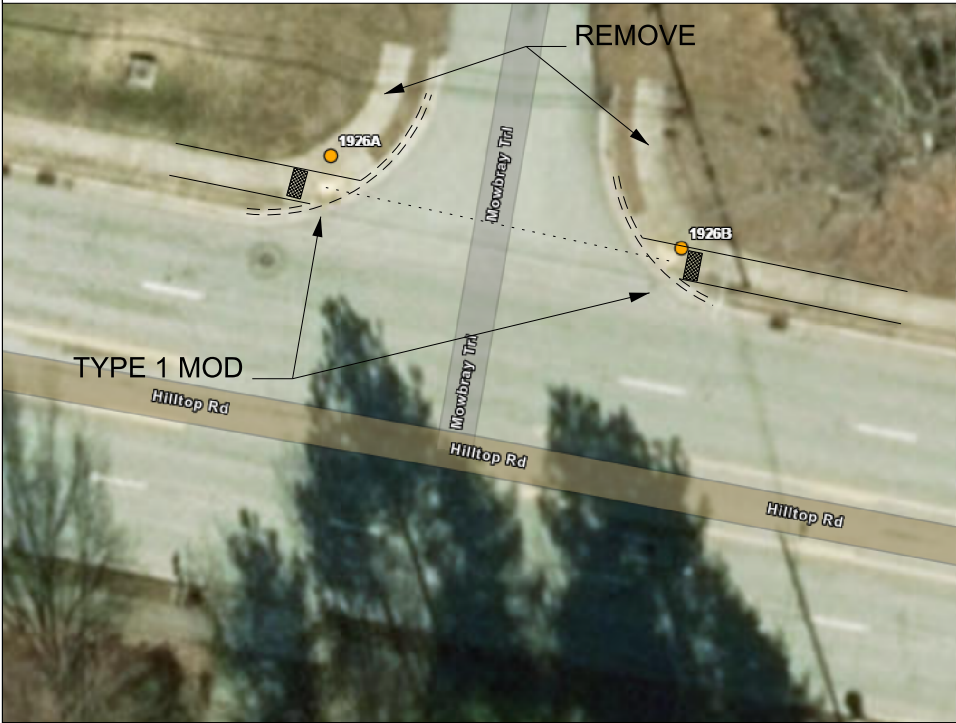
HYDRAULICS ENGINEER

PREPARED BY



DOCUMENT NOT CONSIDERED FINAL
UNLESS ALL SIGNATURES COMPLETED

INSET 81: INTER. ID 1926,
SR-1424 (Hilltop Rd) & Mowbray Tr

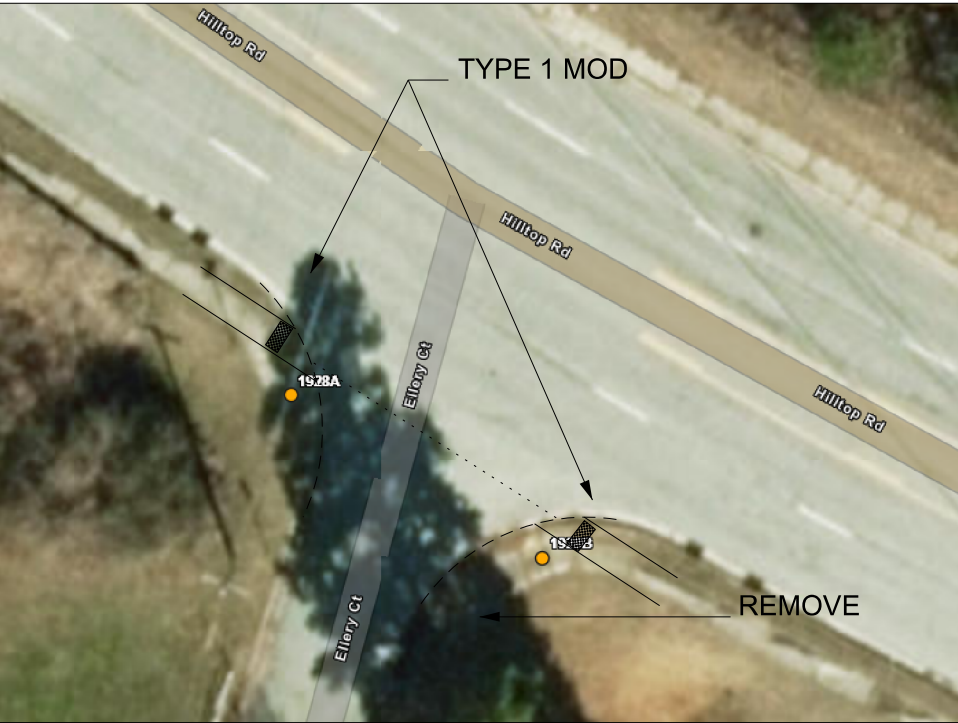


REALIGN RAMPS AT 1926 A & B, AS PER DESIGN.

SEED AREAS OUTSIDE OF PROP. RAMP AFFECTED BY RAMP REMOVALS / RELOCATIONS

REMOVE ADDITIONAL SIDEWALK.

INSET 82: INTER. ID 1928,
SR-1424 (Hilltop Rd) & Ellery Ct

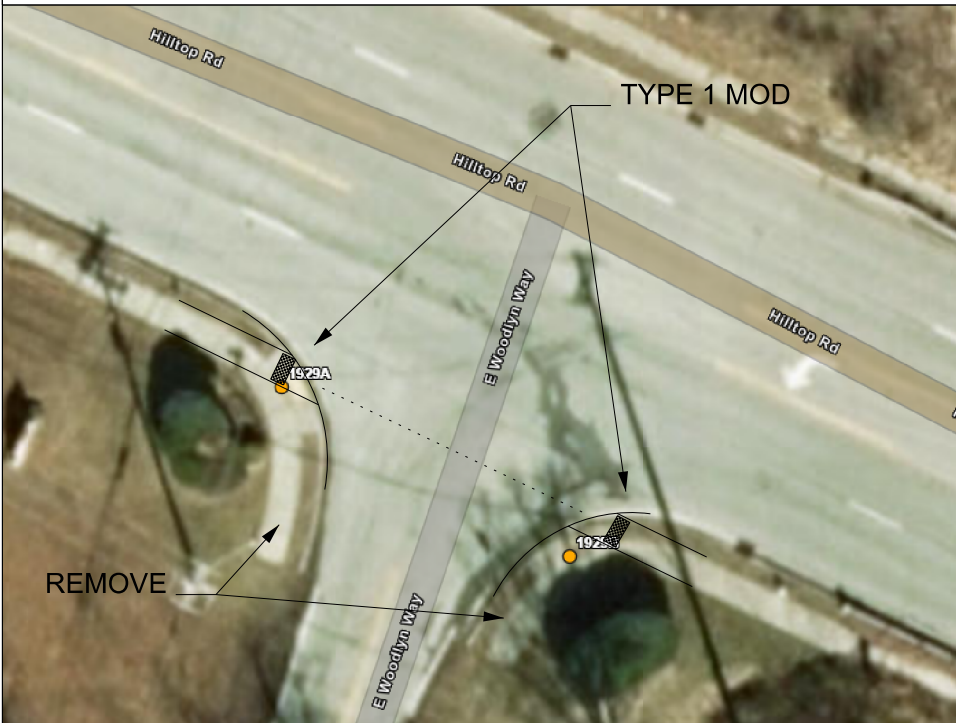


REALIGN RAMPS AT 1928 A & B, AS PER DESIGN.

SEED AREAS OUTSIDE OF PROP. RAMP AFFECTED BY RAMP REMOVALS / RELOCATIONS

REMOVE ADDITIONAL SIDEWALK.

INSET 83: INTER. ID 1929,
SR-1424 (Hilltop Rd) & E Woodlyn Way

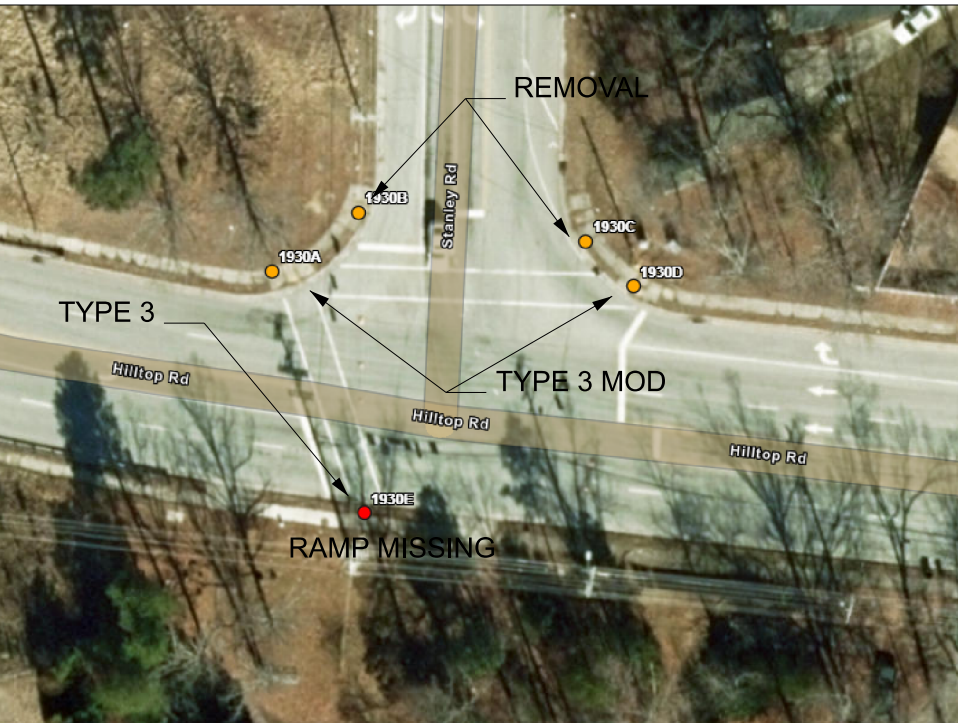


REALIGN RAMPS AT 1929 A & B, AS PER DESIGN.

SEED AREAS OUTSIDE OF PROP. RAMP AFFECTED BY RAMP REMOVALS / RELOCATIONS

REMOVE ADDITIONAL SIDEWALK.

INSET 84: INTER. ID 1930,
SR-1424 (Hilltop Rd) & Stanley Rd



UPGRADE THE RAMPS AT 1930 A, D & E TO TYPE 3 MOD.

MAINTAIN ALL RAMPS WITHIN EXISTING CROSSWALK LIMITS.

REMOVE RAMPS AT 1930 B & C.

SEED AREAS OUTSIDE OF PROP. IMPROVEMENTS AFFECTED BY RAMP REMOVALS/ RELOCATIONS.



REVISIONS

5/26/20

2023 CURB RAMP CONTRACT - GUILFORD COUNTY

R-5787L

SHEET NO. 23

NORTH CAROLINA

DEPARTMENT OF TRANSPORTATION

GUILFORD COUNTY

Division 7 DDC Unit

ROADWAY DESIGN

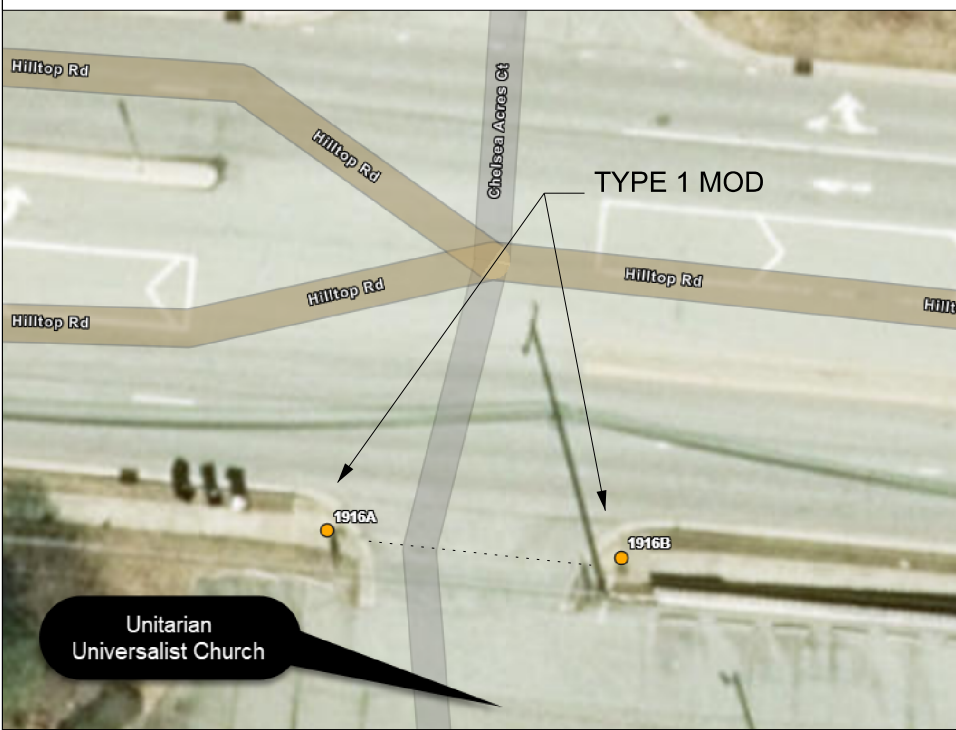
ENGINEER

HYDRAULICS
ENGINEER

PREPARED BY

DOCUMENT NOT CONSIDERED FINAL
UNLESS ALL SIGNATURES COMPLETED

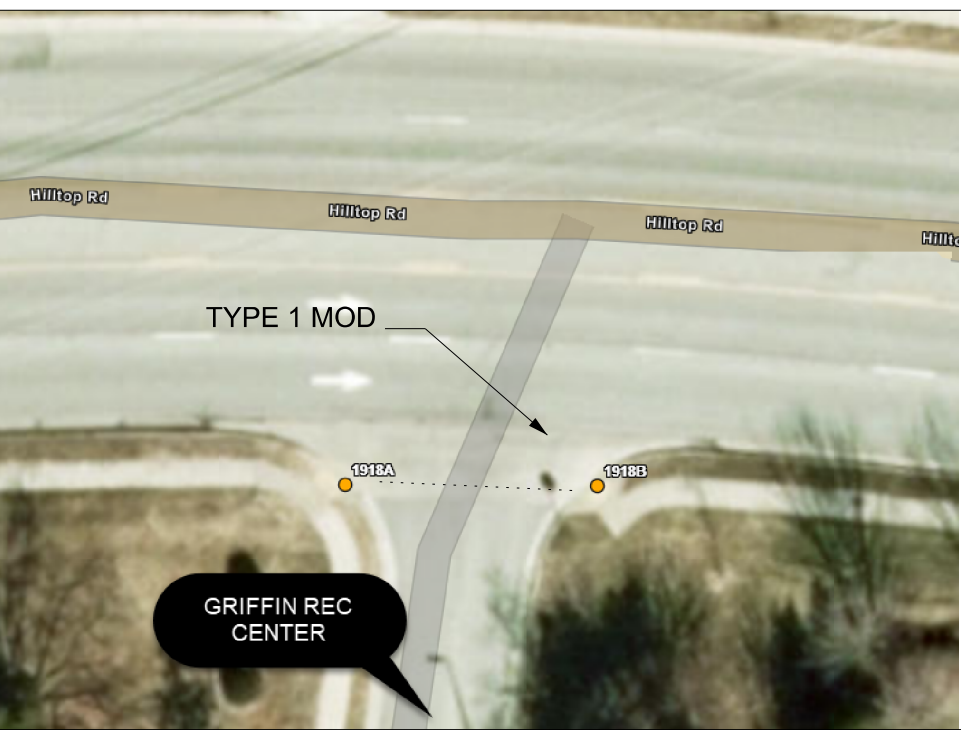
INSET 73: INTER. ID 1916,
SR-1424 (Hilltop Rd) & Unitarian Universalist Church Entrance



REALIGN RAMPS AT
1916 A & B, TO EACH
OTHER

SEED AREAS OUTSIDE
OF PROP. RAMP
AFFECTED BY RAMP
REMOVALS /
RELOCATIONS

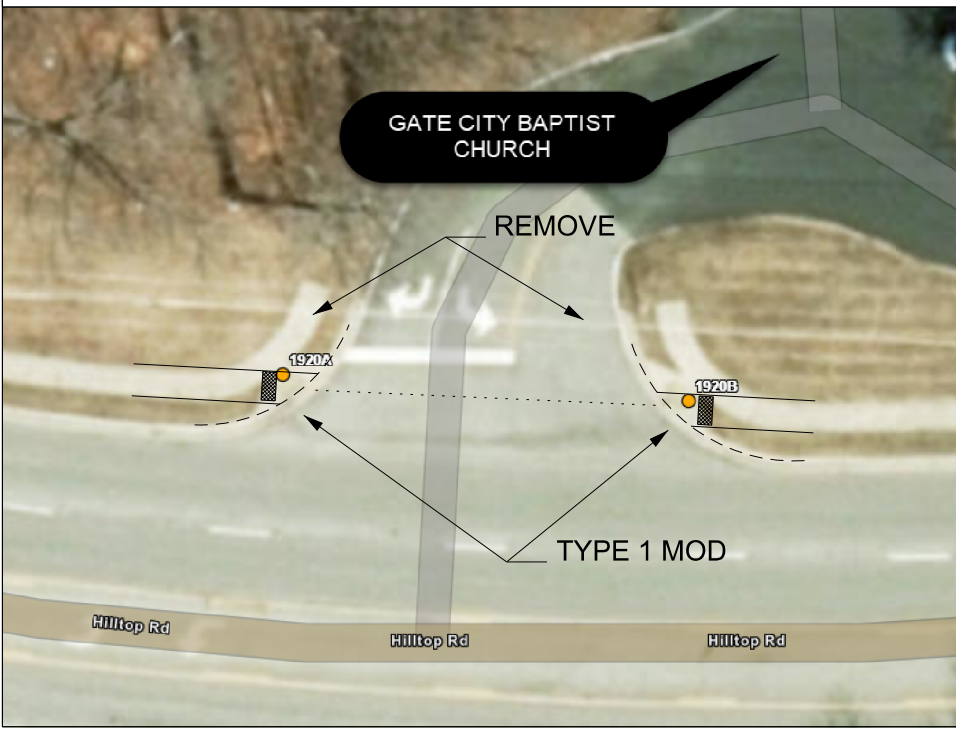
INSET 74: INTER. ID 1918,
SR-1424 (Hilltop Rd) & Griffin Recreation Center Entrance



REALIGN RAMP AT
1918 B TO 1918A.

SEED AREAS OUTSIDE
OF PROP. RAMP
AFFECTED BY RAMP
REMOVALS /
RELOCATIONS

INSET 75: INTER. ID 1920,
SR-1424 (Hilltop Rd) & Gate City Baptist Church Entrance

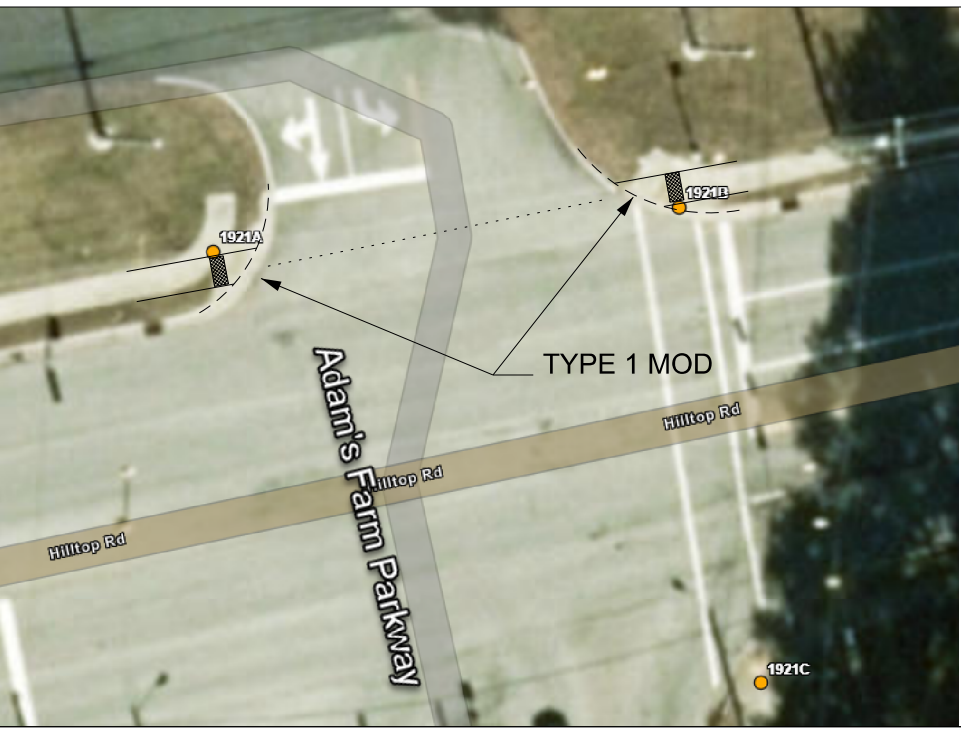


REALIGN RAMPS AT
1920 A & B, AS PER
DESIGN.

REMOVE ADDITIONAL
SIDEWALK

SEED AREAS OUTSIDE
OF PROP. RAMP
AFFECTED BY RAMP
REMOVALS /
RELOCATIONS

INSET 76: INTER. ID 1921,
SR-1424 (Hilltop Rd) & Adams Farm Pkwy



REALIGN RAMPS AT
1921 A & B, AS PER
DESIGN.

SEED AREAS OUTSIDE
OF PROP. RAMP
AFFECTED BY RAMP
REMOVALS /
RELOCATIONS

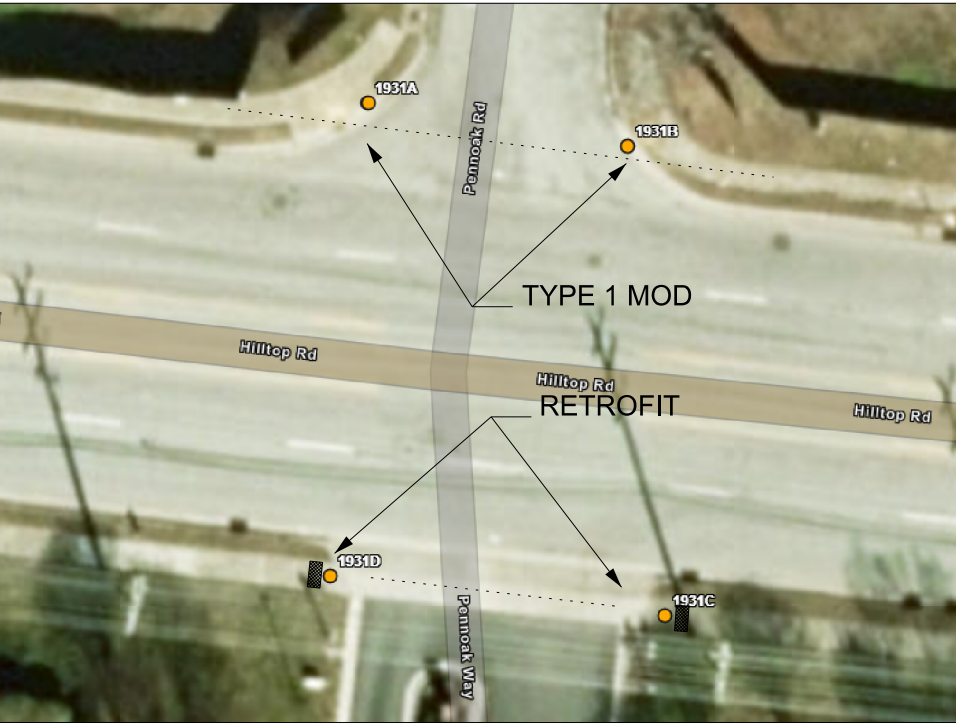


REVISIONS

5/26/20

2023 CURB RAMP CONTRACT - GUILFORD COUNTY

INSET 85 INTER. ID 1931,
SR-1424 (Hilltop Rd) & Pennoak Rd




REALIGN RAMPS AT
1931 A & B TO TYPE 1
MOD DIRECTIONAL.

SEED AREAS
OUTSIDE OF PRO.
RAMP AFFECTED BY
RAMP REMOVALS /
RELOCATIONS

RETROFIT RAMPS AT
1931 C & D.

R-5787L

SHEET NO. 26

NORTH CAROLINA
DEPARTMENT OF TRANSPORTATION
GUILFORD COUNTY


DIVISION 7 DDC UNIT
ROADWAY DESIGN
ENGINEER

HYDRAULICS
ENGINEER

PREPARED BY

DOCUMENT NOT CONSIDERED FINAL
UNLESS ALL SIGNATURES COMPLETED



REVISIONS