

**This electronic collection of documents is provided  
for the convenience of the user  
and is Not a Certified Document –**

**The documents contained herein were originally issued  
and sealed by the individuals whose names and license  
numbers appear on each page, on the dates appearing  
with their signature on that page.**

**This file or an individual page  
shall not be considered a certified document.**

# 2023 CURB RAMP CONTRACT - ALAMANCE COUNTY

R-5787K

SHEET NO. 4

NORTH CAROLINA  
DEPARTMENT OF TRANSPORTATION  
ALAMANCE AND ORANGE COUNTY



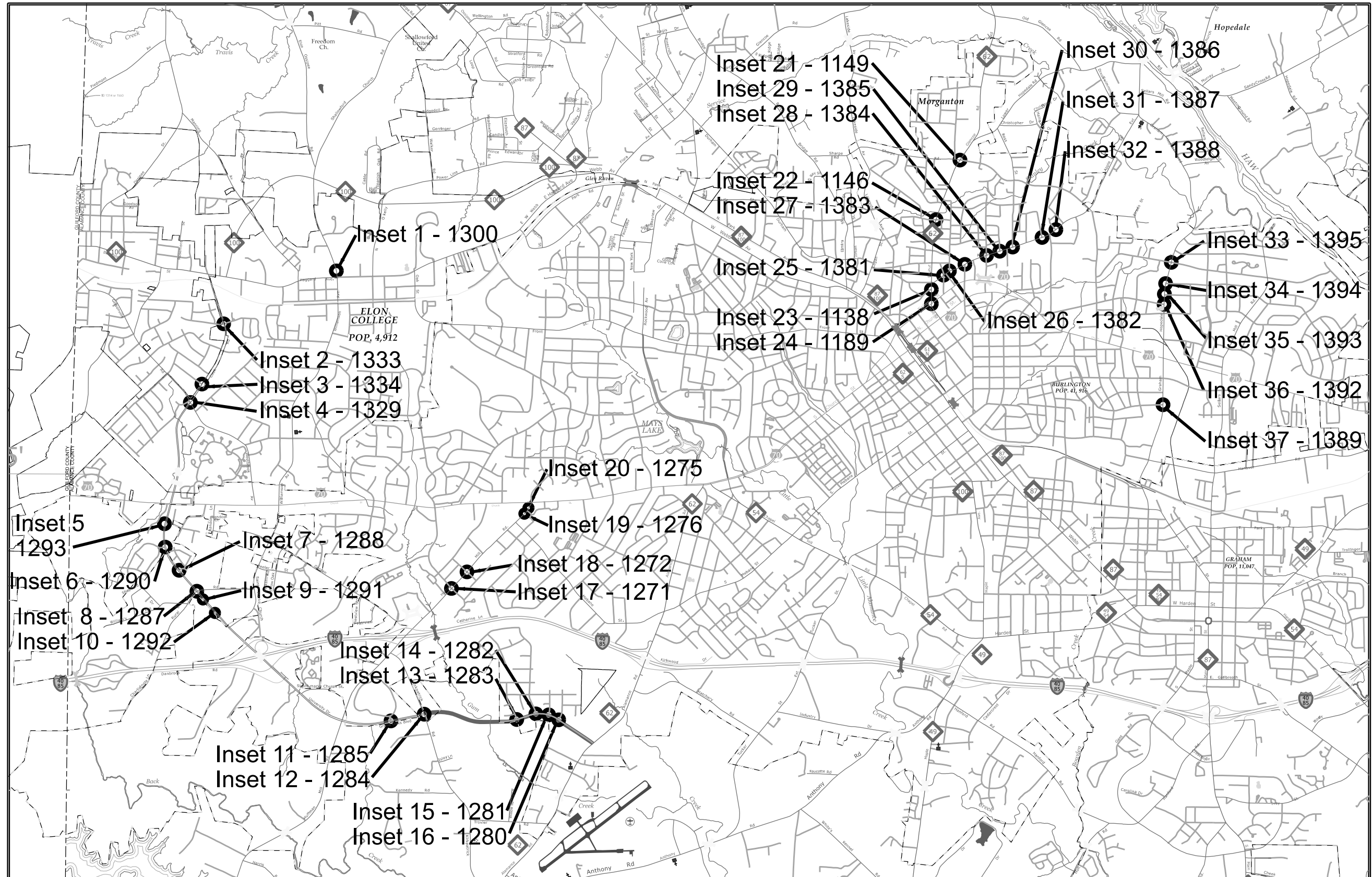
DIVISION 7 DDC UNIT  
ROADWAY DESIGN  
ENGINEER

HYDRAULICS  
ENGINEER

PREPARED BY



DOCUMENT NOT CONSIDERED FINAL  
UNLESS ALL SIGNATURES COMPLETED





# 2023 CURB RAMP CONTRACT - ALAMANCE COUNTY

R-5787K

SHEET NO. 4A

NORTH CAROLINA

DEPARTMENT OF TRANSPORTATION

ALAMANCE AND ORANGE COUNTY

DIVISION 7 DDC UNIT

ROADWAY DESIGN

ENGINEER

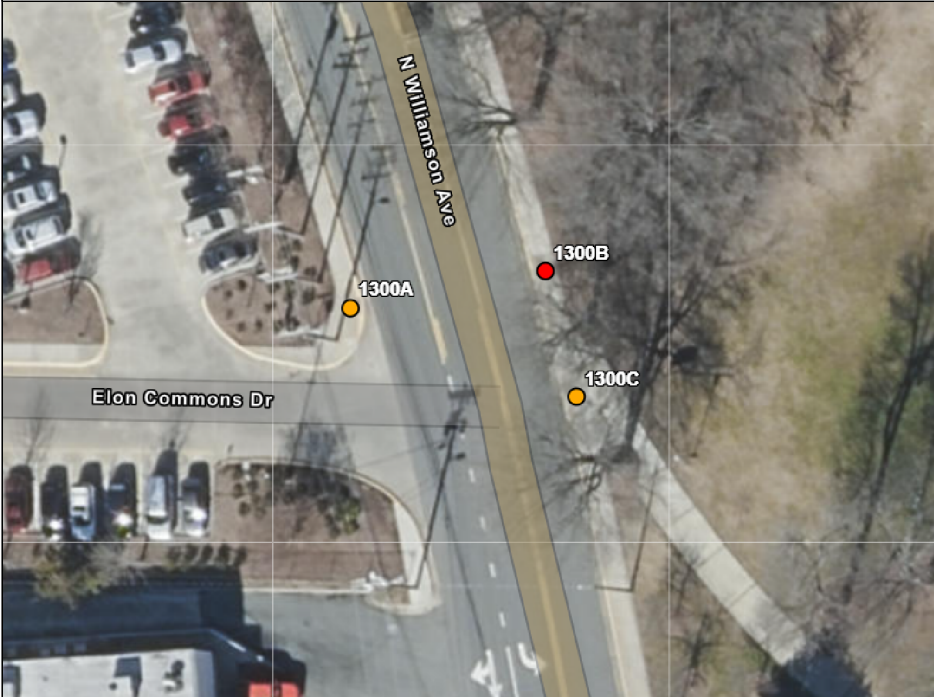
HYDRAULICS

ENGINEER

PREPARED BY

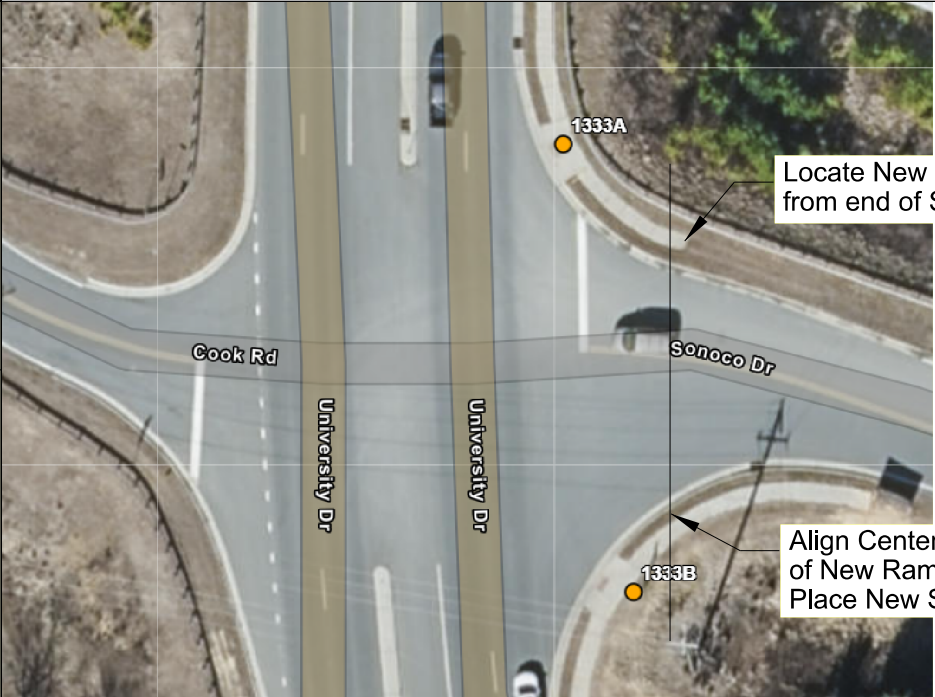
DOCUMENT NOT CONSIDERED FINAL  
UNLESS ALL SIGNATURES COMPLETED

INSET 1: INTER. ID 1300,  
SR-1301 (N Williamson Av) & Elon Commons Dr



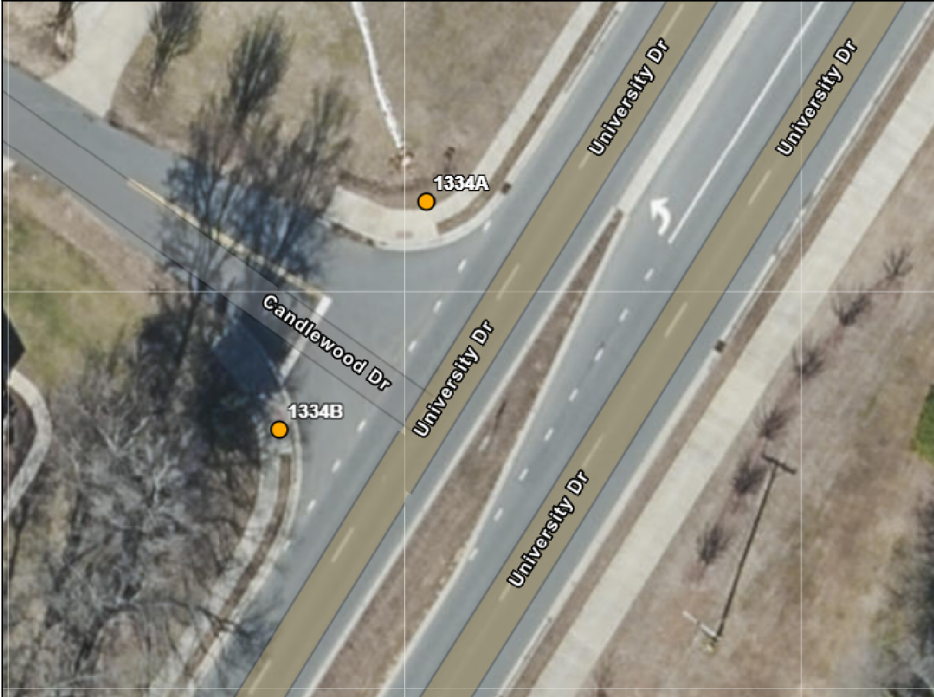
- UPGRADE RAMP 1300A TO TYPE 2A. Align to 1300B
- UPGRADE RAMP 1300B TO TYPE 2. Align to 1300A
- REMOVE RAMP 1300C

INSET 2: INTER. ID 1333,  
SR-1311 (Cook Rd) & Sonoco Dr & University Dr.



- Locate New Ramp 1333A from end of Sidewalk
- UPGRADE RAMP 1333A TO TYPE 3 MOD
- UPGRADE RAMP 1333B TO TYPE 3 MOD

INSET 3: INTER. ID 1334,  
SR-1311 (Cook Rd)/University Dr. & Candlewood Dr



- UPGRADE RAMP 1334A TO TYPE 3 MOD
- UPGRADE RAMP 1334B TO TYPE 3 MOD

INSET 4: INTER. ID 1329,  
SR-1311 (Cook Rd)/University Dr. & SR-1309 (Westbrook Av)



- UPGRADE RAMP 1329A TO 848.06
- UPGRADE RAMP 1329B TO 848.06
- UPGRADE RAMP 1329C TO 848.06
- UPGRADE RAMP 1329D TO TYPE 3
- UPGRADE RAMP 1329E TO TYPE 4C
- REMOVE RAMP 1329F COMBINED WITH NEW RAMP 1329E



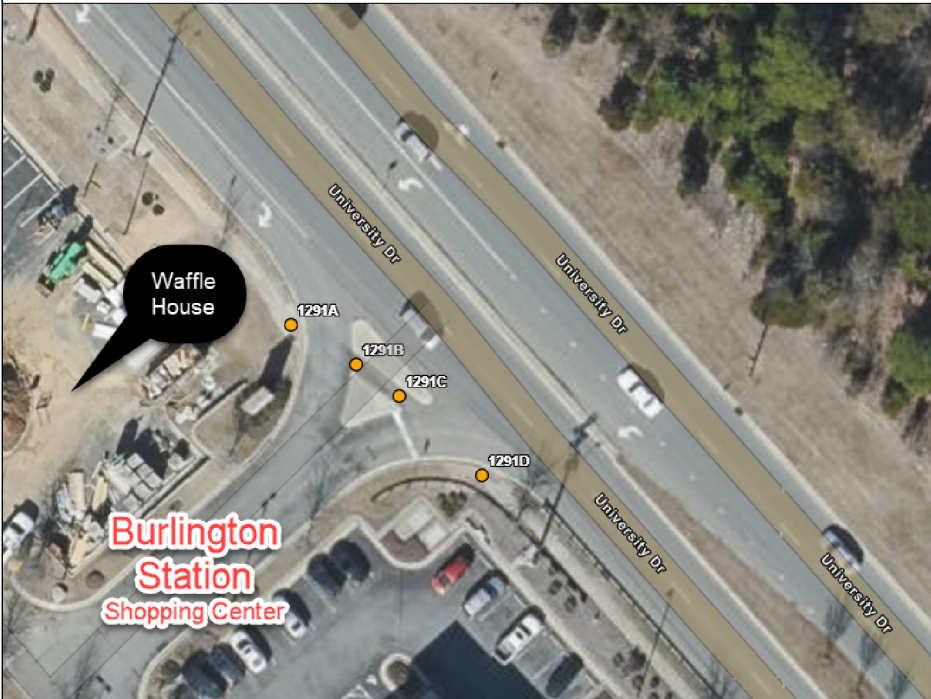
REVISIONS



5/26/20

# 2023 CURB RAMP CONTRACT - ALAMANCE COUNTY

INSET 9: INTER. ID 1291,  
SR-1226 (University Dr) & Burlington Station Entrance



- UPGRADE  
RAMP 1291A  
TO TYPE 1 MOD
- UPGRADE  
RAMP 1291B  
RETROFIT
- UPGRADE  
RAMP 1291C  
RETROFIT
- UPGRADE  
RAMP 1291D  
TO TYPE 1 MOD

INSET 10: INTER. ID 1292,  
SR-1226 (University Dr) & Discount Tire Entrance



- UPGRADE  
RAMP 1292A  
TO TYPE 1 MOD
- UPGRADE  
RAMP 1292B  
TO TYPE 7
- UPGRADE  
RAMP 1292C  
TO TYPE 7
- UPGRADE  
RAMP 1292D  
TO TYPE 3

INSET 11: INTER. ID 1285, SR-1213 (Grand Oaks Blvd) & Holt  
Pardue Rd at Alamance Regional Medical Center Emergency Entrance



- UPGRADE  
RAMP 1285A  
TO TYPE 1 A
- UPGRADE  
RAMP 1285B  
TO TYPE 1 A

INSET 12: INTER. ID 1284,  
SR-1213 (Grand Oaks Blvd) & SR-1146 (Kirkpatrick Rd)



- UPGRADE  
RAMP 1284A  
TO TYPE 3 MOD.
- UPGRADE  
RAMP 1284B  
TO TYPE 2B
- REMOVE  
RAMP 1284C

R-5787K

SHEET NO. 4C

NORTH CAROLINA  
DEPARTMENT OF TRANSPORTATION  
ALAMANCE AND ORANGE COUNTY

DIVISION 7 DDC UNIT  
ROADWAY DESIGN  
ENGINEER

HYDRAULICS  
ENGINEER

PREPARED BY

DOCUMENT NOT CONSIDERED FINAL  
UNLESS ALL SIGNATURES COMPLETED

REVISIONS



5/26/20

# 2023 CURB RAMP CONTRACT - ALAMANCE COUNTY

INSET 17: INTER. ID 1271,  
SR-1158 (Huffman Mill Rd) & Forestdale Dr



UPGRADE  
RAMP 1271A  
TO TYPE 2B

UPGRADE  
RAMP 1271B  
TO TYPE 2B

UPGRADE  
RAMP 1271C  
TO TYPE 2B

INSET 18: INTER. ID 1272,  
SR-1158 (Huffman Mill Rd) & Kerney Dr



UPGRADE  
RAMP 1272A  
TO TYPE 2B.  
ALIGN IN RADIUS TO  
ALIGN WITH CENTERLINE  
OF NEW 1272C

REMOVE  
RAMP 1272B

UPGRADE  
RAMP 1272C  
TO TYPE 2B.  
ALIGN IN RADIUS TO  
ALIGN WITH CENTERLINE  
OF NEW 1272A

REMOVE  
RAMP 1272D

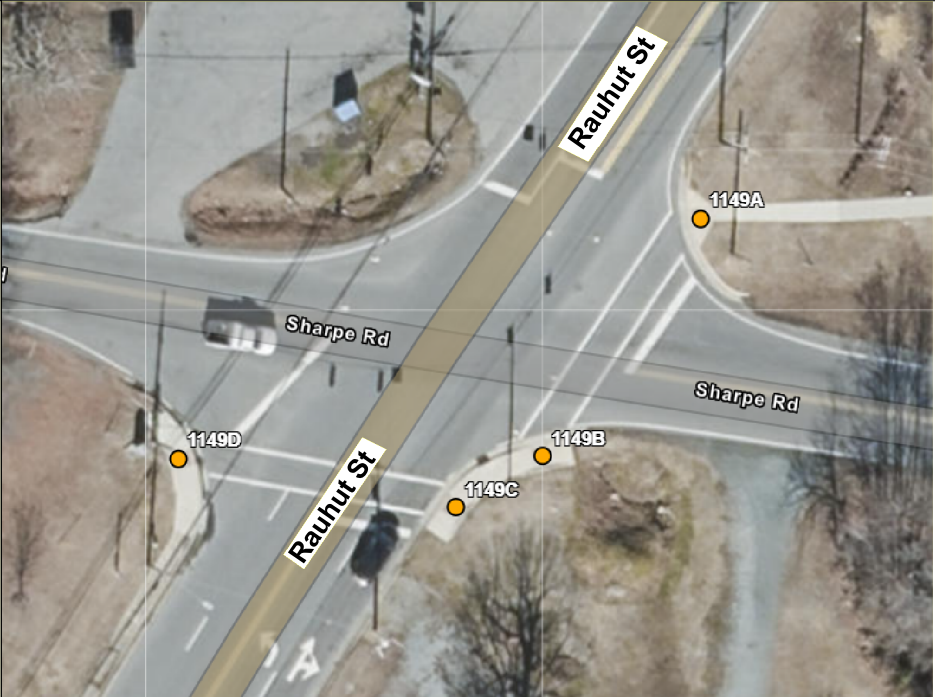
INSET 19: INTER. ID 1276,  
SR-1158 (Huffman Mill Rd) & Sears Auto Entrance



UPGRADE  
RAMP 1276A  
TO TYPE 1A

UPGRADE  
RAMP 1276B  
TO TYPE 1A

INSET 20: INTER. ID 1149,  
NC-62 (Rauhut St) & Sharpe Rd



UPGRADE  
RAMP 1149A  
TO TYPE  
STD.848.06

RAMP 1149B COMPLIANT  
RAMP 1149C COMPLIANT  
RAMP 1149D COMPLIANT

R-5787K

SHEET NO. 4E

NORTH CAROLINA  
DEPARTMENT OF TRANSPORTATION  
ALAMANCE AND ORANGE COUNTY

DIVISION 7 DDC UNIT  
ROADWAY DESIGN  
ENGINEER

HYDRAULICS  
ENGINEER

PREPARED BY

DOCUMENT NOT CONSIDERED FINAL  
UNLESS ALL SIGNATURES COMPLETED

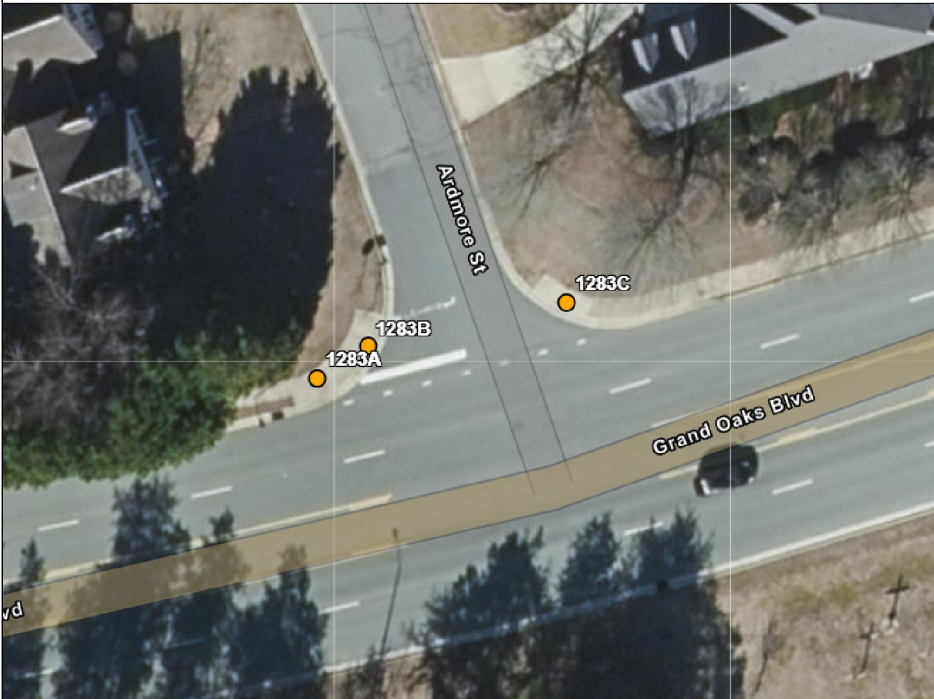


REVISIONS



# 2023 CURB RAMP CONTRACT - ALAMANCE COUNTY

INSET 13: INTER. ID 1283,  
SR-1213 (Grand Oaks Blvd) & Ardmore St



UPGRADE  
RAMP 1283A  
TO TYPE 3 MOD

UPGRADE  
RAMP 1283B  
TO TYPE 3 MOD

UPGRADE  
RAMP 1283C  
TO TYPE 2B

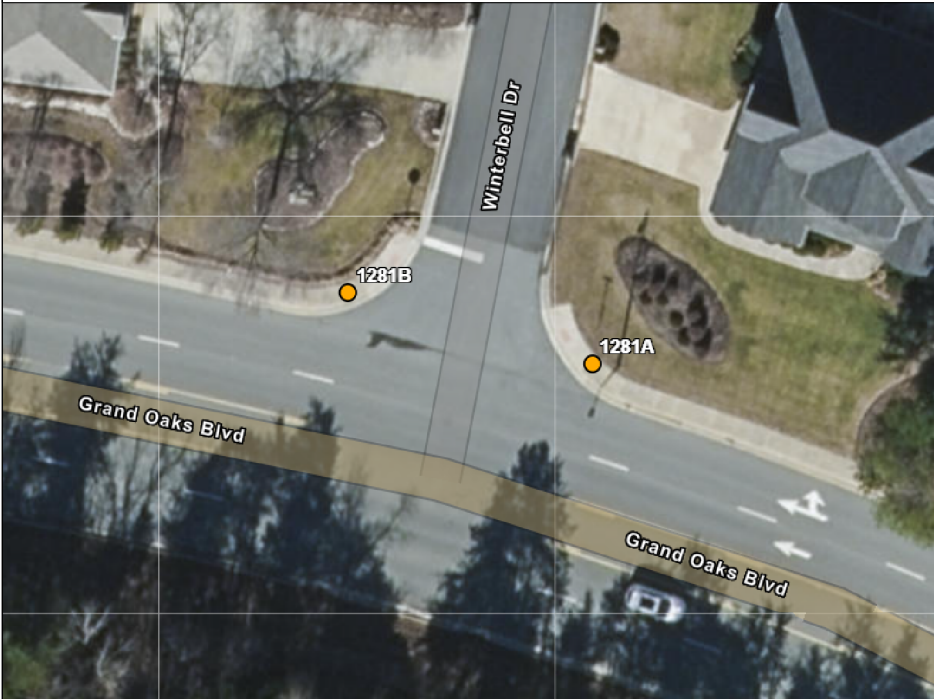
INSET 14: INTER. ID 1282,  
SR-1213 (Grand Oaks Blvd) & Marlborough Rd



UPGRADE  
RAMP 1282A  
TO TYPE 1A  
ALIGN RAMP TO RAMP B

UPGRADE  
RAMP 1282B  
TO TYPE 1A

INSET 15: INTER. ID 1281,  
SR-1213 (Grand Oaks Blvd) & Winterbell Dr



UPGRADE  
RAMP 1281A  
TO TYPE 1A

UPGRADE  
RAMP 1281B  
TO TYPE 1A

INSET 16: INTER. ID 1280,  
SR-1213 (Grand Oaks Blvd) & Winston Dr



UPGRADE  
RAMP 1280A  
TO TYPE 1 MOD.

UPGRADE  
RAMP 1280B  
TO TYPE 1

R-5787K

SHEET NO. 40

NORTH CAROLINA  
DEPARTMENT OF TRANSPORTATION  
ALAMANCE AND ORANGE COUNTY

DIVISION 7 DDC UNIT  
ROADWAY DESIGN  
ENGINEER

HYDRAULICS  
ENGINEER

PREPARED BY

DOCUMENT NOT CONSIDERED FINAL  
UNLESS ALL SIGNATURES COMPLETED

REVISIONS



5/26/20

# 2023 CURB RAMP CONTRACT - ALAMANCE COUNTY

R-5787K

SHEET NO. 4F

NORTH CAROLINA

DEPARTMENT OF TRANSPORTATION

ALAMANCE AND ORANGE COUNTY

DIVISION 7 DDC UNIT


ROADWAY DESIGN

ENGINEER

HYDRAULICS  
ENGINEER

PREPARED BY

DOCUMENT NOT CONSIDERED FINAL  
UNLESS ALL SIGNATURES COMPLETED

<div>INSET 21: INTER. ID 1146, NC-62 (Rauhut St) &amp; Key St</div> <div></div> <div><div>UPGRADE RAMP 1146A TO TYPE 2B</div><div>UPGRADE RAMP 1146B TO TYPE 2B</div><div>UPGRADE RAMP 1146C TO TYPE 2B</div><div>UPGRADE RAMP 1146D TO TYPE 2B</div></div>	<div>INSET 22 INTER. ID 1138, NC-62 (Rauhut St) &amp; Union Av</div> <div></div> <div><div>UPGRADE RAMP 1138A TO TYPE 2B.</div><div>UPGRADE RAMP 1138B TO TYPE 1A.</div></div>
<div>INSET 23: INTER. ID 1189, US-70 (N Fisher St) &amp; NC-62 (Rauhut St)</div> <div></div> <div><div>UPGRADE RAMP 1189A TO TYPE 3 MOD</div><div>REMOVE RAMP 1189B</div><div>REMOVE RAMP 1189C</div><div>UPGRADE RAMP 1189D TYPE 2B</div><div>UPGRADE RAMP 1189E TO TYPE 3</div></div>	<div>INSET 24: INTER. ID 1381, SR-1700 (Apple St) &amp; Jeffries St</div> <div></div> <div><div>UPGRADE RAMP 1381B TO TYPE 2B.</div></div>



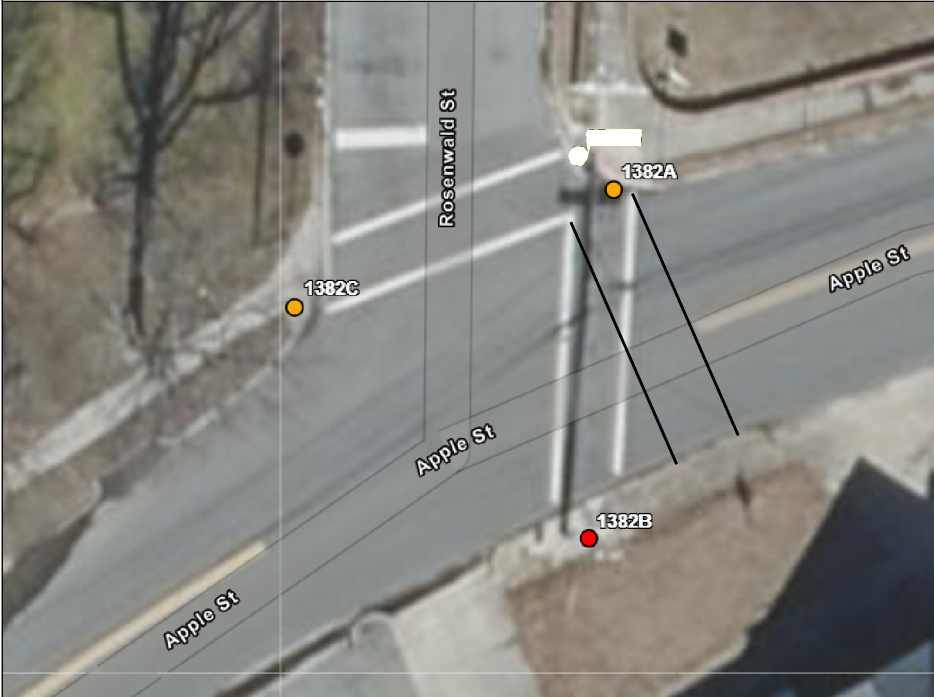
REVISIONS



5/26/20

# 2023 CURB RAMP CONTRACT - ALAMANCE COUNTY

INSET 25: INTER. ID 1382,  
SR-1700 (Apple St) & Rosenwald St



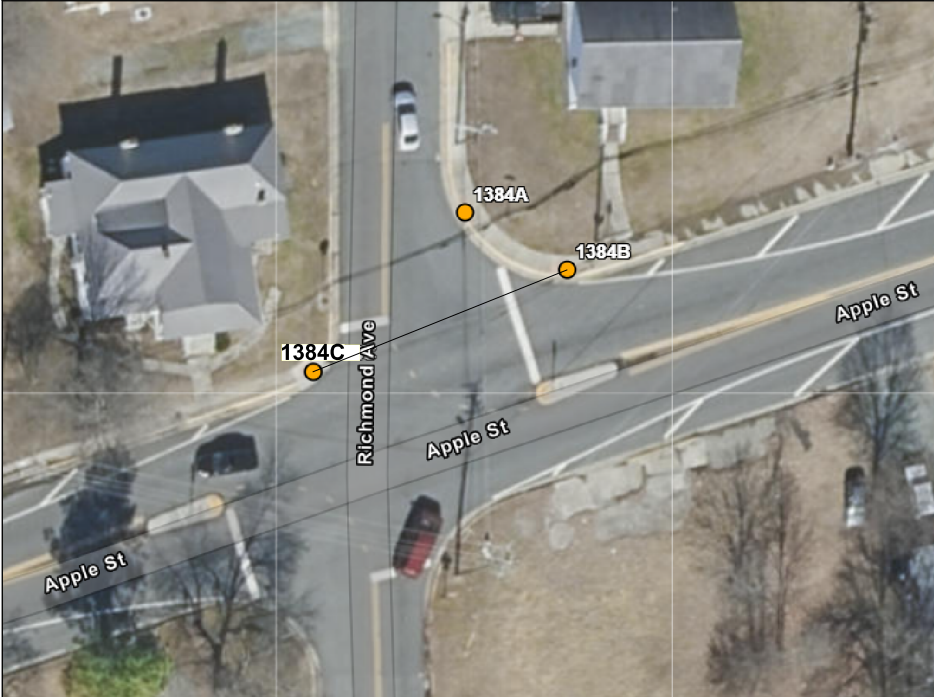
- UPGRADE RAMP 1382A TO TYPE 3 MOD
- INSTALL RAMP 1382B TO TYPE 2  
Remove Exist. Crosswalk and Ramp with Ramp 1382A so as to avoid power pole and hydrant conflict
- UPGRADE RAMP 1382C TO TYPE 1 MOD

INSET 26: INTER. ID 1383,  
SR-1700 (Apple St) & N Ireland St



- UPGRADE RAMP 1383A TO TYPE 1
- UPGRADE RAMP 1383B TO TYPE 1
- UPGRADE RAMP 1383C TO TYPE 1

INSET 27: INTER. ID 1384,  
SR-1700 (Apple St) & Richmond Av



- REMOVE RAMP 1384A
- UPGRADE RAMP 1384B TO TYPE 2  
Align with new Ramp 1384C
- UPGRADE RAMP 1384C TO TYPE 1  
Center new Ramp on Center Line of existing MH and Align with new Ramp 1384B

INSET 28: INTER. ID 1385,  
SR-1700 (Apple St) & Lee St



- UPGRADE RAMP 1385A TO TYPE 1

R-5787K

SHEET NO. 4G

NORTH CAROLINA

DEPARTMENT OF TRANSPORTATION

ALAMANCE AND ORANGE COUNTY

ALAMANCE COUNTY

ROADWAY DESIGN

ENGINEER

DIVISION 7 DDC UNIT

HYDRAULICS ENGINEER

PREPARED BY

DOCUMENT NOT CONSIDERED FINAL  
UNLESS ALL SIGNATURES COMPLETED

REVISIONS



5/26/20

# 2023 CURB RAMP CONTRACT - ALAMANCE COUNTY

R-5787K

SHEET NO. 4B

NORTH CAROLINA

DEPARTMENT OF TRANSPORTATION

ALAMANCE AND ORANGE COUNTY

DIVISION 7 DDC UNIT

ROADWAY DESIGN

ENGINEER

HYDRAULICS

ENGINEER

PREPARED BY

DOCUMENT NOT CONSIDERED FINAL

UNLESS ALL SIGNATURES COMPLETED

INSET 5: INTER. ID 1293,  
SR-1226 (University Dr) & Shoppes at Waterford Entrance



UPGRADE  
RAMP 1293A  
TO TYPE 2B.

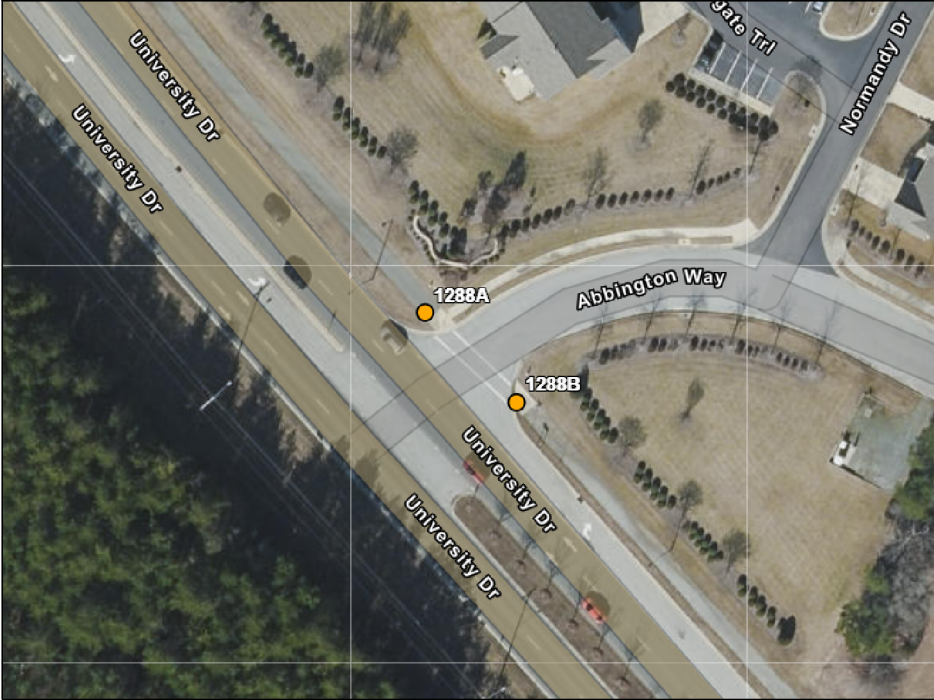
UPGRADE  
RAMP 1293B  
TO TYPE 2B.

INSET 6: INTER. ID 1290,  
SR-1226 (University Dr) & Dunleigh Dr



UPGRADE  
RAMP 1290A  
TO TYPE TYPE 3 MOD.

INSET 7: INTER. ID 1288,  
SR-1226 (University Dr) & Abbington Way



UPGRADE  
RAMP 1288A  
TO TYPE 3 MOD  
OVERSIZED

UPGRADE  
RAMP 1288B  
TO TYPE 1 MOD  
OVERSIZED

INSET 8: INTER. ID 1287,  
SR-1226 (University Dr) & SR-1300 (Rural Retreat Rd)



UPGRADE  
RAMP 1287A  
TO TYPE 1 MOD.

REMOVE  
RAMP 1287B

UPGRADE  
RAMP 1287C  
TO TYPE 3 MOD.



REVISIONS



5/26/20

# 2023 CURB RAMP CONTRACT - ALAMANCE COUNTY

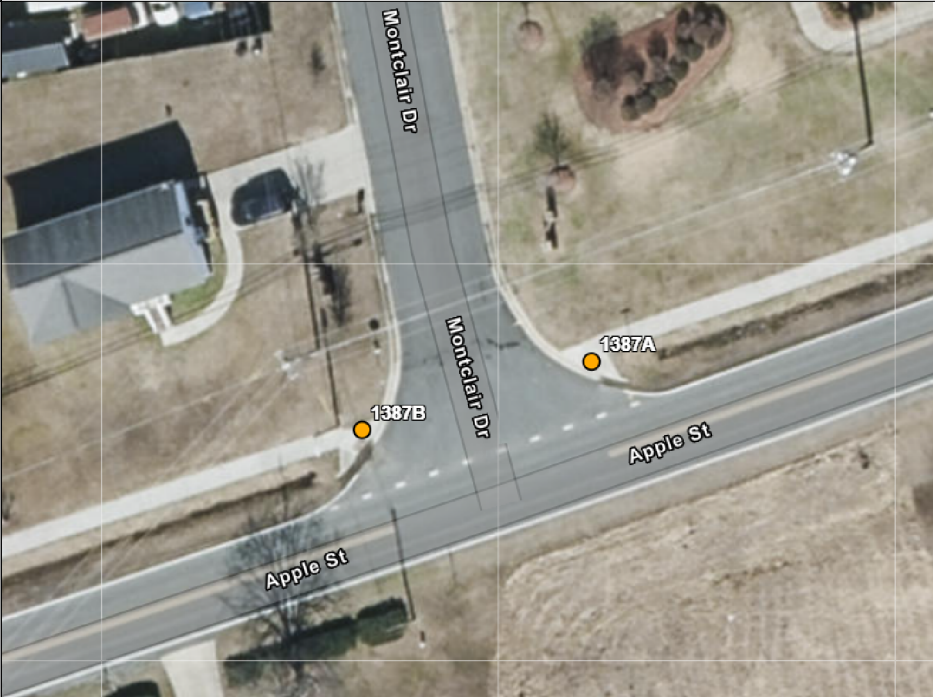
INSET 29: INTER. ID 1386,  
SR-1700 (Apple St) & Ross St



UPGRADE  
RAMP 1386A  
TO TYPE 1 MOD

UPGRADE  
RAMP 1386B  
TO TYPE 2B

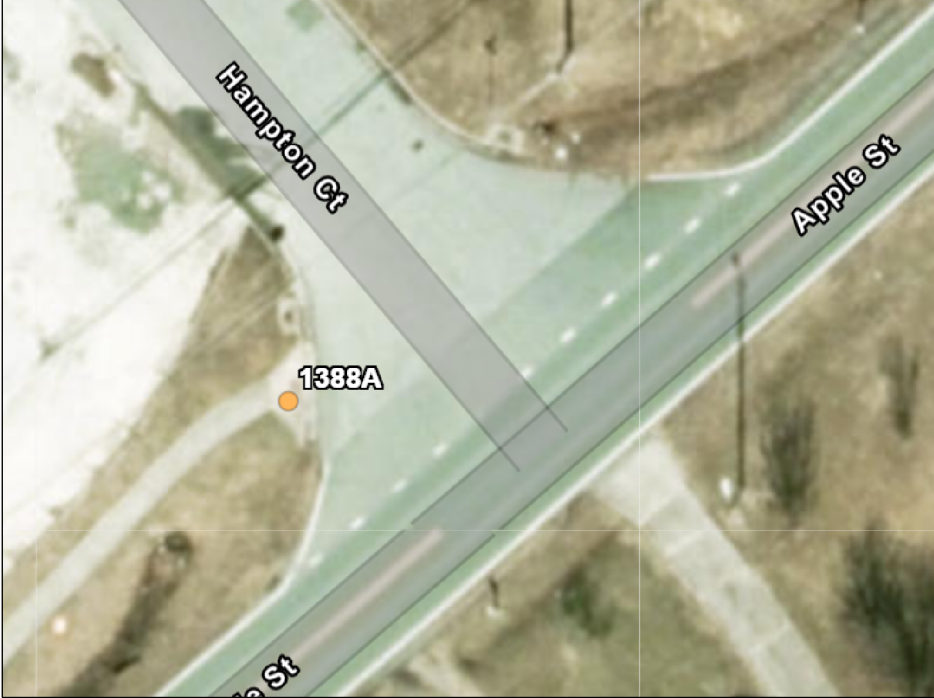
INSET 30: INTER. ID 1387,  
SR-1700 (Apple St) & Montclair Dr



UPGRADE  
RAMP 1387A  
TO TYPE 1 MOD

UPGRADE  
RAMP 1387B  
TO TYPE 1 MOD

INSET 31: INTER. ID 1388,  
SR-1700 (Apple St) & Hampton Ct



UPGRADE  
RAMP 1388A  
TO TYPE 1 MOD.

INSET 32: INTER. ID 1395,  
SR-1716 (N Graham Hopedale Rd) & Morningside Dr



UPGRADE  
RAMP 1395A  
TO TYPE 1

UPGRADE  
RAMP 1395B  
TO TYPE 2B



R-5787K

SHEET NO. 4H

NORTH CAROLINA  
DEPARTMENT OF TRANSPORTATION  
ALAMANCE AND ORANGE COUNTY

DIVISION 7 DDC UNIT  
ROADWAY DESIGN  
ENGINEER

HYDRAULICS  
ENGINEER

PREPARED BY

DOCUMENT NOT CONSIDERED FINAL  
UNLESS ALL SIGNATURES COMPLETED

REVISIONS



# 2023 CURB RAMP CONTRACT - ALAMANCE COUNTY

R-5787K

SHEET NO. 41

NORTH CAROLINA

DEPARTMENT OF TRANSPORTATION

ALAMANCE AND ORANGE COUNTY

DIVISION 7 DDC UNIT

ROADWAY DESIGN

ENGINEER

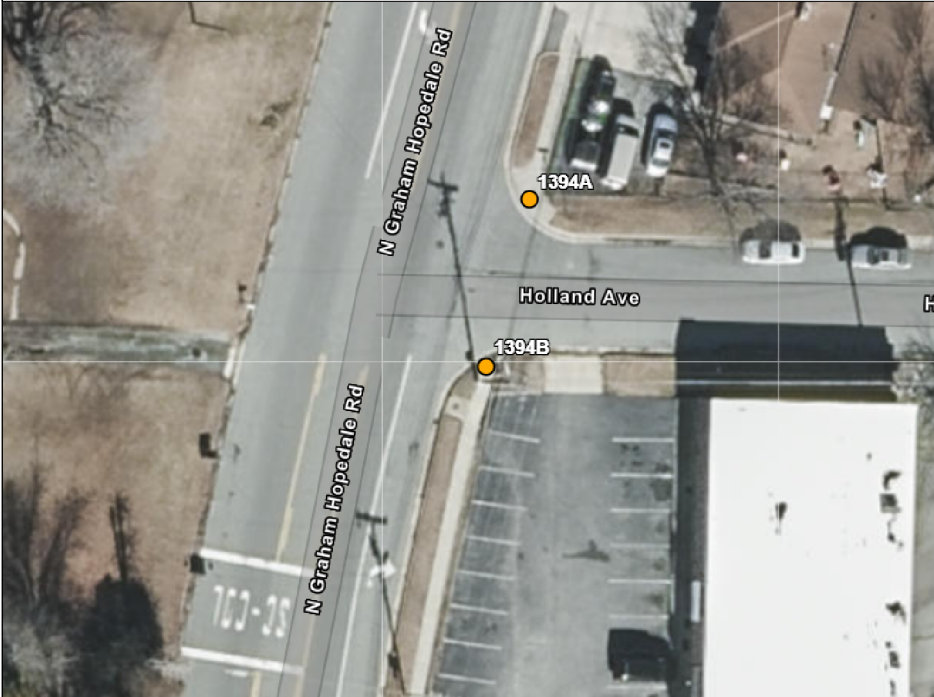
HYDRAULICS

ENGINEER

PREPARED BY

DOCUMENT NOT CONSIDERED FINAL  
UNLESS ALL SIGNATURES COMPLETED

INSET 33: INTER. ID 1394,  
SR-1716 (N Graham Hopedale Rd) & Holland Av



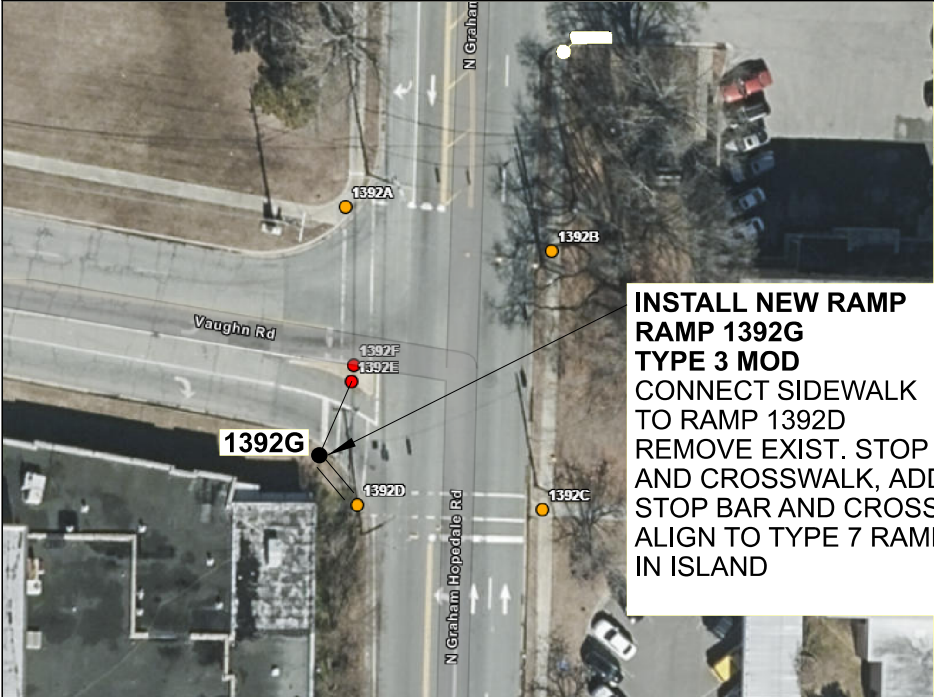
- UPGRADE  
RAMP 1394A  
TO TYPE 1 MOD
- UPGRADE  
RAMP 1394B  
TO TYPE 1 MOD

INSET 34: INTER. ID 1393,  
SR-1716 (N Graham Hopedale Rd) & Mckinney St



- UPGRADE  
RAMP 1393A  
TO TYPE 2A
- UPGRADE  
RAMP 1393B  
TO TYPE 2B
- UPGRADE  
RAMP 1393C  
TO TYPE 2A
- UPGRADE  
RAMP 1393D  
TO TYPE 2
- UPGRADE  
RAMP 1393E  
TO TYPE 1 MOD
- UPGRADE  
RAMP 1393F  
TO TYPE 1 MOD

INSET 35: INTER. ID 1392,  
SR-1716 (N Graham Hopedale Rd) & Vaughn Rd



**INSTALL NEW RAMP  
RAMP 1392G  
TYPE 3 MOD**  
CONNECT SIDEWALK  
TO RAMP 1392D  
REMOVE EXIST. STOP BAR  
AND CROSSWALK, ADD NEW  
STOP BAR AND CROSSWALK  
ALIGN TO TYPE 7 RAMP 1392E  
IN ISLAND

- UPGRADE  
RAMP 1392A  
TO TYPE 3 MOD
- UPGRADE  
RAMP 1392B  
TO TYPE 3
- UPGRADE  
RAMP 1392C  
TO TYPE 3
- UPGRADE  
RAMP 1392D  
TO TYPE 1 MOD
- UPGRADE  
RAMP 1392E  
TO TYPE 7
- UPGRADE  
RAMP 1392F  
TO TYPE 7.

INSET 36: INTER. ID 1389,  
SR-1716 (S Graham Hopedale Rd) & Piedmont Way



- UPGRADE  
RAMP 1389A  
TO TYPE 4B.
- UPGRADE  
RAMP 1389B  
TO TYPE 1 MOD.



REVISIONS