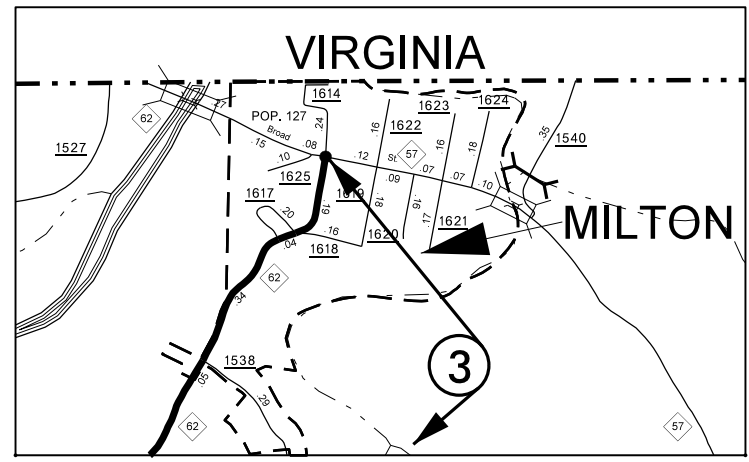
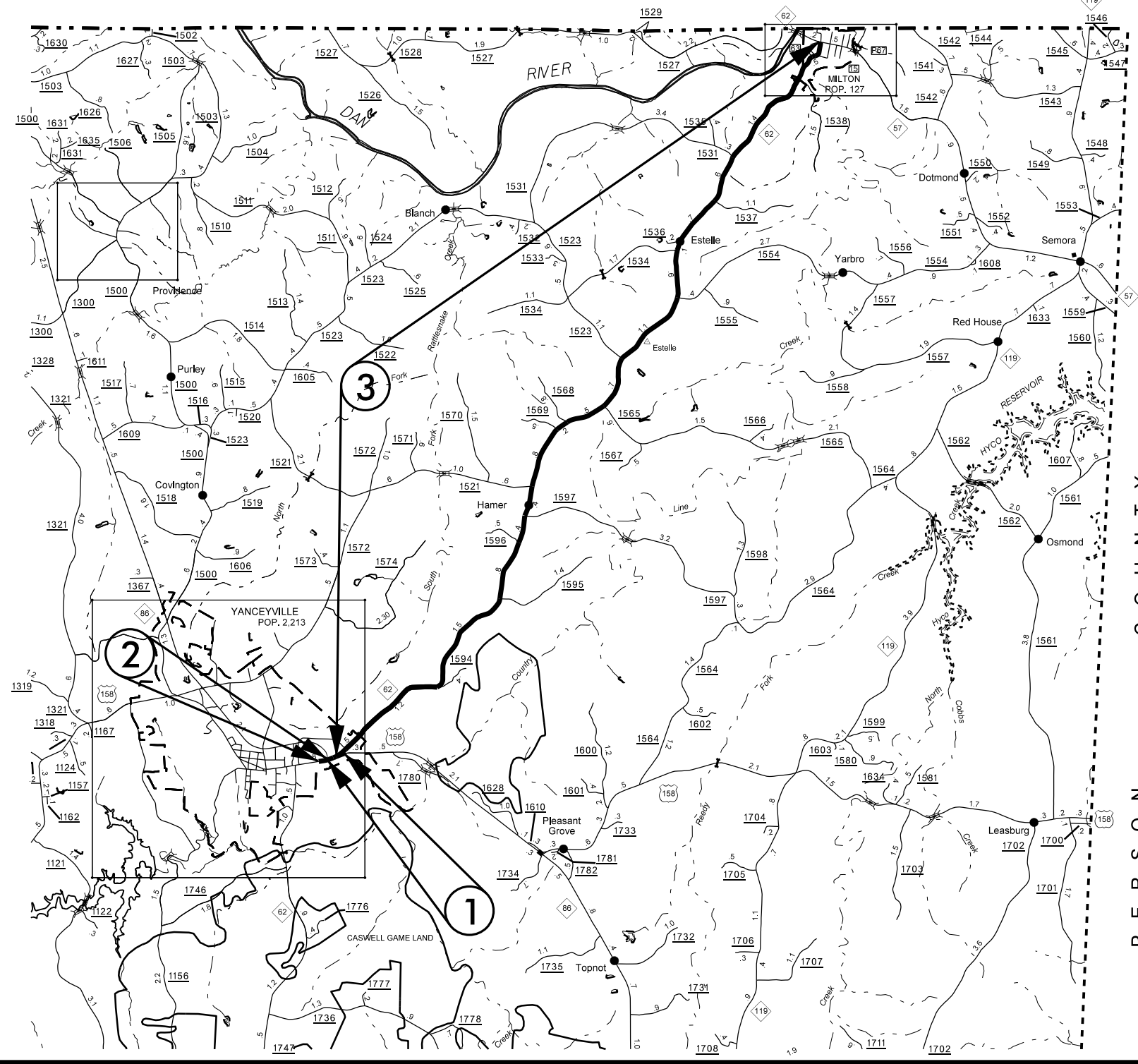
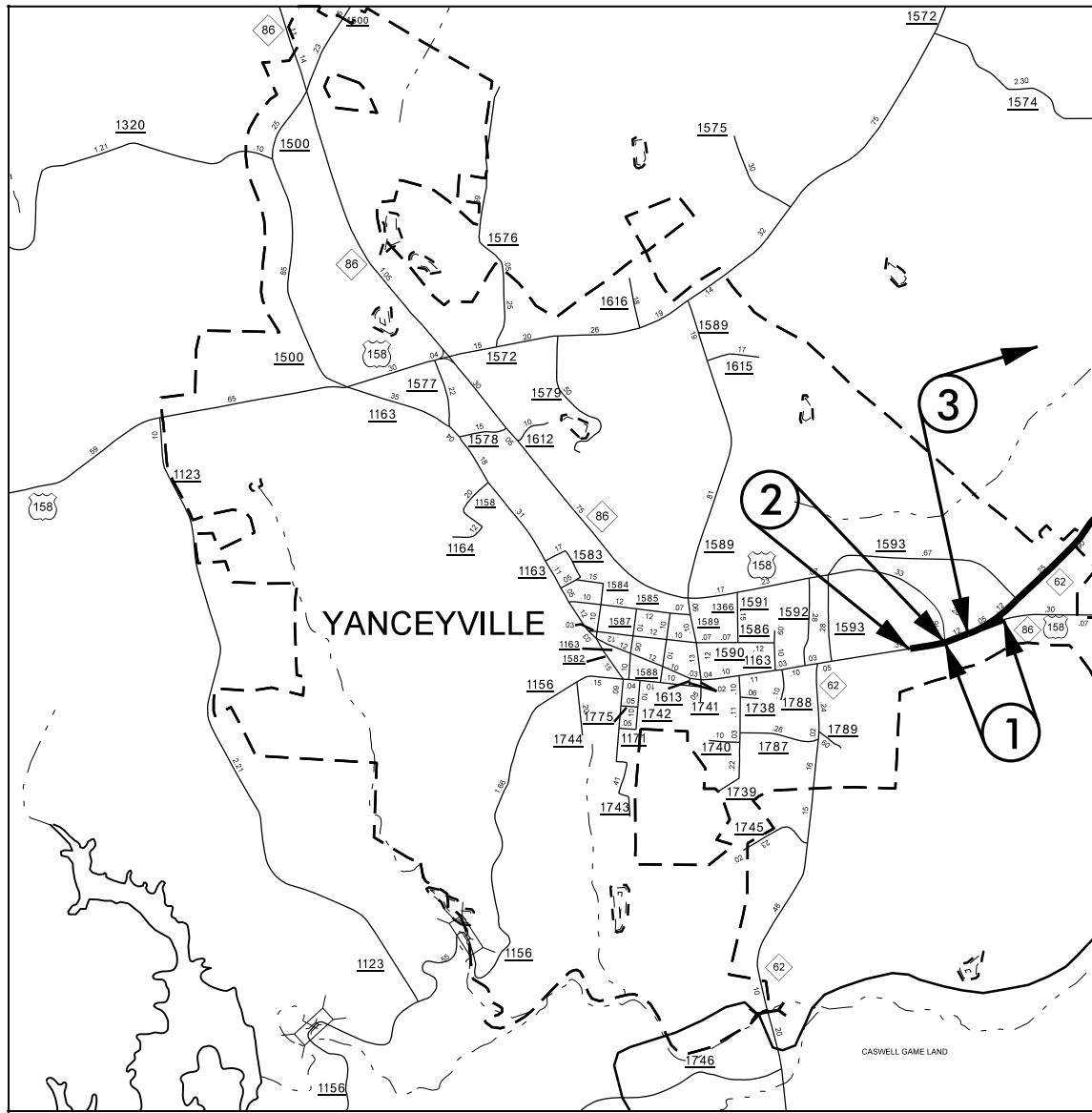


CASWELL COUNTY



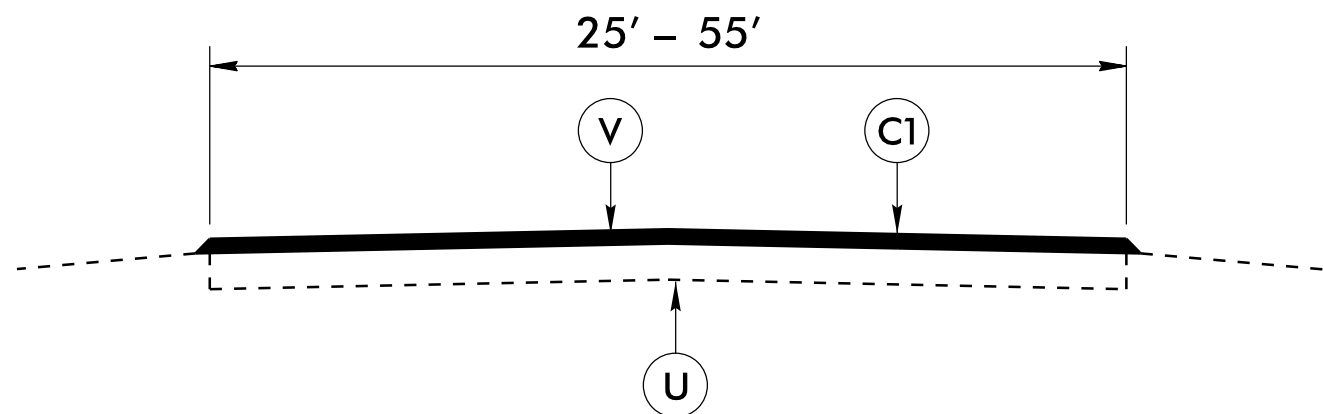
VIRGINIA



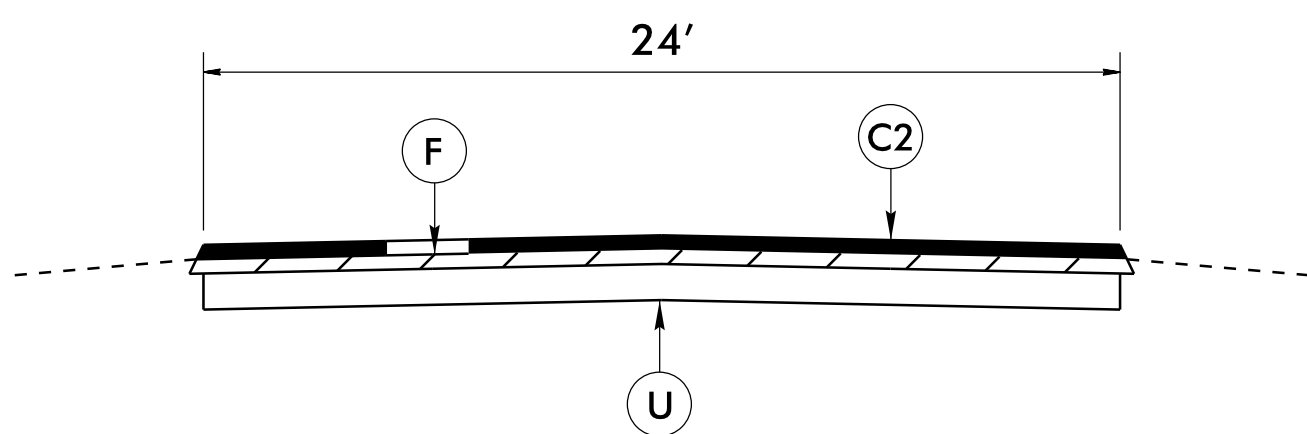
CASWELL COUNTY

REVISIONS

8/17/99
 07-MAN-2016 10:30
 S:\DDC\Resur\proj\2016\07\12\10171\CADD\2016CPT.07.12.10171.PSH.dgn
 2016 PO Contract Caswell\06002821.2016CPT.07.12.10171\CADD\2016CPT.07.12.10171.PSH.dgn

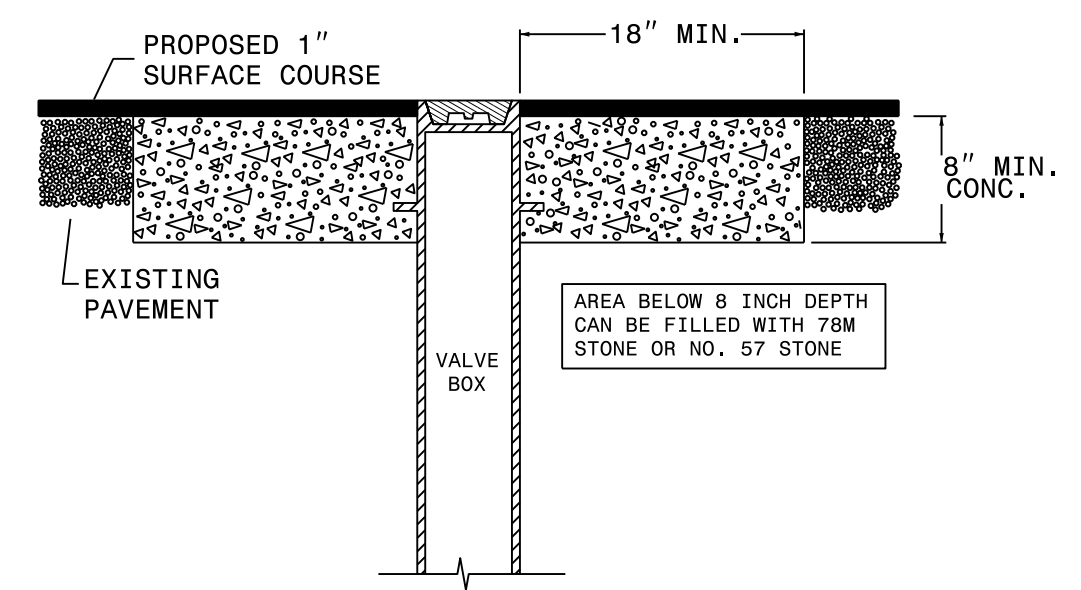


TYPICAL SECTION NO. 1
 MAP 1: STA. 06 + 50.00 TO STA. 22 + 00.00
 MAP 2: STA. 00 + 00.00 TO STA. 06 + 50.00



TYPICAL SECTION NO. 2
 MAP 3: STA. 00 + 00.00 TO STA. 623 + 15.00

STANDARD CONCRETE ENCASEMENT FOR MANHOLE & VALVE CASTINGS IN PAVEMENT



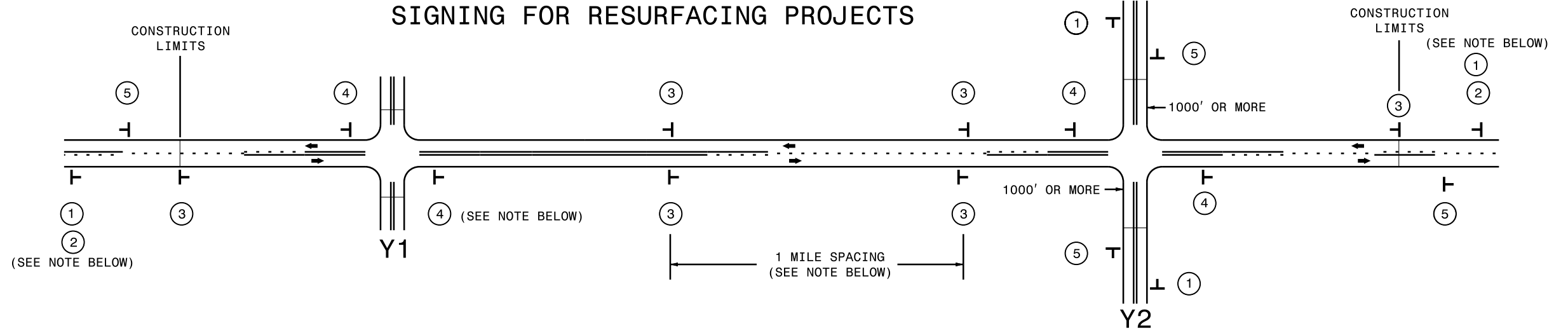
USE RAPID SET GROUT, MORTAR, OR CONCRETE AS NOTED IN PROJECT SPECIAL PROVISIONS. CLASS B CONCRETE MAY BE USED WHEN ADJUSTMENTS ARE NOT IN THE TRAVEL LANE.

PAVEMENT SCHEDULE (FINAL PAVEMENT DESIGN)	
C1	PROP. APPROX. 1½" ASPHALT CONCRETE SURFACE COURSE, TYPE S9.5B, AT AN AVERAGE RATE OF 168 LBS. PER SQ. YD.
C2	PROP. APPROX. 1¼" ASPHALT CONCRETE SURFACE COURSE, TYPE SF9.5A, AT AN AVERAGE RATE OF 137 LBS. PER SQ. YD.
F	ASPHALT SURFACE TREATMENT, 78M
U	EXISTING PAVEMENT.
V	MILLING BITUMINOUS PAVEMENT. 1½" DEPTH.

REVISIONS

8/17/99
 07-MAN-2016 10:30
 S:\DDC\Resur\2016 P0 Contr\ctb\Caaxell\00002821\2016CPT.07.12.10171\CAADD\2016CPT.07.12.10171.PSH2.dgn
 2016 P0 Contr\ctb\Caaxell\00002821\2016CPT.07.12.10171\CAADD\2016CPT.07.12.10171.PSH2.dgn

SIGNING FOR RESURFACING PROJECTS



LEGEND	
	STATIONARY SIGN
	DIRECTION OF TRAFFIC FLOW

MAINLINE (-L-) SIGNING

-Y- LINE SIGNING

SIGNING NOTES AND PLACEMENT PER DIRECTION	1	 <small>W20-1 48" X 48"</small>	PLACE 1000' PRIOR TO BEGINNING OF CONSTRUCTION LIMITS. ONLY USED ON -Y- LINES IF RESURFACING LIMITS EXTEND 1000' ALONG -Y- LINE.
	2	 <small>W7-3aP 24" X 18"</small>	#2 SIGN ONLY USED WHEN RESURFACING LIMITS ARE 2 OR MORE MILES IN LENGTH. ROUND UP TO NEXT WHOLE NUMBER. (NO FRACTIONAL OR DECIMAL NUMBERS)
	3	 <small>SP 13107 48" X 48"</small>	PLACE INITIALLY AT THE CONSTRUCTION LIMITS AND SPACED 1 MILE APART THEREAFTER. IF NO -Y- LINES EXIST, PLACE 2ND SET 1/2 MILE FROM THE CONSTRUCTION LIMITS AND THEN SPACE 1 MILE THEREAFTER.
	4	 <small>SP 13106 48" X 48"</small>	THESE ARE FOR -Y- LINES THAT ARE "THROUGH" ROADWAYS. DEAD END AND SUBDIVISION ROADS ARE NOT "THROUGH" ROADWAYS. INSTALL 500' +/- FROM EACH -Y- LINE APPROACH AS SHOWN ABOVE. FOR MULTIPLE -Y- LINES THAT ARE SEPARATED BY 0.25 MILES OR LESS, TREAT AS A SINGLE UNIT AND INSTALL WITHIN 500' OF EACH APPROACH. A MAXIMUM OF 2 SIGN SETS PER MILE. DO NOT INSTALL WHEN -Y- LINES ARE WITHIN 0.5 MILES FROM "END ROAD WORK" SIGN.
	5	 <small>G20-2 A 48" X 24"</small>	PLACE 500' FOLLOWING THE END OF CONSTRUCTION LIMITS.

NO REQUIRED STATIONARY SIGNING FOR THE FOLLOWING -Y- LINE CONDITIONS:

- 1) LESS THAN 1000' OF RESURFACING ALONG -Y- LINE
- 2) SUBDIVISION ROADS
- 3) DEAD END ROADS

WHEN PAVING/CONSTRUCTION ACTIVITIES PROCEED ACROSS AN UNSIGNED -Y- LINE, ADVANCE WARNING PORTABLE SIGNS SHALL BE USED ALONG THE -Y- LINE AS SHOWN BELOW. REMOVE UPON COMPLETION OF WORK.



PLACED 500' IN ADVANCE OF FLAGGER. PLACED 250' IN ADVANCE OF FLAGGER.

07 JAN 2016 10:30 C:\DDN\resurfacing\Projects\2016 PO Contracts\Coswell\DDC00282\2016CPT.07.12.10171\CADD\2016CPT_07.12.10171_PSH3.dgn
 S:\DDN\resurfacing\Projects\2016 PO Contracts\Coswell\DDC00282\2016CPT_07.12.10171\CADD\2016CPT_07.12.10171_PSH3.dgn
 S:\DDN\resurfacing\Projects\2016 PO Contracts\Coswell\DDC00282\2016CPT_07.12.10171\CADD\2016CPT_07.12.10171_PSH3.dgn



RESURFACING
ADVANCE WARNING SIGNS
FOR
RURAL AND SUBURBAN
2 LANE ROADWAYS

PROJECT NO.	SHEET NO.	TOTAL NO.
2016CPT.07.12.10171	4	5

SUMMARY OF QUANTITIES

PROJECT NO	COUNTY	MAP NO	ROUTE	DESCRIPTION	TYP NO	LANES	LANE TYPE	FINAL SURFACE TESTING REQUIRED	WARM MIX ASPHALT REQUIRED	LENGTH MI	WIDTH FT	INCIDENTAL STONE BASE TONS	MILLING ASPHALT PAVEMENT, 1½" DEPTH SY	ASPHALT CONC SURFACE COURSE, TYPE S9.5B TONS	ASPHALT CONC SURFACE COURSE, TYPE SF9.5A TONS	ASPHALT BINDER FOR PLANT MIX TONS	ASPHALT SURFACE TREATMENT, MAT COAT, #78M STONE SY	EMULSION FOR ASPHALT SURFACE TREATMENT GAL	ADJUSTMENT OF METER BOXES OR VALVE BOXES EA
2016CPT.07.12.10171	Caswell	1	1 - US 158	FROM JOINT (MP 14.05) WEST OF NC 62 TO JOINT (MP 14.35) EAST OF NC 62	1	2	2WU	NO	NO	0.009	50		264	24		1			
		"	"		1	2	2WU	NO	NO	0.08	42		2,422	206		12			
		"	"		1	2	2WU	NO	NO	0.205	28		3,368	284		17			
TOTAL FOR MAP NO. 1										0.294			6,054	514		30			
2016CPT.07.12.10171	Caswell	2	1 - NC HWY 62 (WEST)	FROM JOINT WEST OF NC 86/US 158 (MP 13.29) TO JOINT EAST OF NC 86/US 158 (MP 14.33)	1	2	2WU	NO	NO	0.123	35	10	3,013	253		15			
TOTAL FOR MAP NO. 2										0.123		10	3,013	253		15			
2016CPT.07.12.10171	Caswell	3	1 - NC HWY 62 (NORTH)	FROM NC 86/US 158 (MP 13.62) TO NC 57 (MP 25.38)	2	2	2WU	NO	NO	0.066	24	485			84	6	929	308	6
		"	"		2	2	2WU	NO	NO	1.508	24				1,486	100	21,233	7,005	
		"	"		2	2	2WU	NO	NO	1.466	24				1,445	97	20,641	6,811	
		"	"		2	2	2WU	NO	NO	0.777	24				775	52	10,940	3,608	
		"	"		2	2	2WU	NO	NO	0.35	24				360	24	4,928	1,628	
		"	"		2	2	2WU	NO	NO	0.4	24				409	27	5,632	1,857	
		"	"		2	2	2WU	NO	NO	0.809	24				807	54	11,391	3,758	
		"	"		2	2	2WU	NO	NO	0.161	24				177	12	2,267	748	
		"	"		2	2	2WU	NO	NO	0.515	24				521	35	7,251	2,394	
		"	"		2	2	2WU	NO	NO	0.672	24				673	45	9,462	3,124	
		"	"		2	2	2WU	NO	NO	1.108	24				1,097	74	15,601	5,148	
		"	"		2	2	2WU	NO	NO	0.597	24				600	40	8,406	2,772	
		"	"		2	2	2WU	NO	NO	0.136	24				152	10	1,915	634	
		"	"		2	2	2WU	NO	NO	0.678	24				679	46	9,546	3,150	
		"	"		2	2	2WU	NO	NO	0.625	24				628	42	8,800	2,904	
		"	"		2	2	2WU	NO	NO	1.364	24				1,346	90	19,205	6,336	
		"	"		2	2	2WU	NO	NO	0.339	24				350	23	4,773	1,575	
		"	"	2	2	2WU	NO	NO	0.049	24				68	5	690	229		
		"	"	2	2	2WU	NO	NO	0.183	24				178	12	2,577	849		
TOTAL FOR MAP NO. 3										11.803		485			11,835	794	166,187	54,838	6
TOTAL FOR PROJ NO. 2016CPT.07.12.10171										12.22		495	9,067	767	11,835	839	166,187	54,838	6
GRAND TOTAL										12.22		495	9,067	767	11,835	839	166,187	54,838	6

PROJECT NO.	SHEET NO.	TOTAL NO.
2016CPT.07.12.10171	5	5

THERMOPLASTIC AND PAINT QUANTITIES

PROJECT NO	COUNTY	MAP NO	ROUTE	DESCRIPTION	TYP NO	LANES	LANE TYPE	LENGTH	WIDTH	STATIONARY WORK ZONE SIGN SF	WORK ZONE SIGNS (STATIONARY) SF	FLAGGER HR	TEMPORARY TRAFFIC CONTROL LS	4" X 90 M WHITE THERMO LF	4" X 90 M YELLOW THERMO LF	4" X 120 M YELLOW THERMO LF	4" X 120 M WHITE THERMO LF	6" X 90 M YELLOW THERMO LF	6" X 120 M WHITE THERMO LF	24" X 120 M WHITE THERMO LF	THERMO LT ARROW 90 M EA	THERMO RT ARROW 90 M EA	SNOWPLOWABLE PAVEMENT MARKERS CRYSTAL/RED EA				
2016CPT.07.12.10171	Caswell	1	1 - US 158	FROM JOINT (MP 14.05) WEST OF NC 62 TO JOINT (MP 14.35) EAST OF NC 62		2		0.009	50	14		12		12		9	2				0		10				
		"				2		0.08	42																		
		"				2		0.205	28																		
TOTAL FOR MAP NO. 1								0.294		14	12		12		9	2		1		0		10					
2016CPT.07.12.10171	Caswell	2	1 - NC HWY 62 (WEST)	FROM JOINT WEST OF NC 86/US 158 (MP 13.29) TO JOINT EAST OF NC 86/US 158 (MP 14.33)		2	2WU	0.123	35		34	50	700	3,410	223	4,601	359			63		2	32				
TOTAL FOR MAP NO. 2								0.123			34	50	700	3,410	223	4,601	359			63		2	32				
2016CPT.07.12.10171	Caswell	3	1 - NC HWY 62 (NORTH)	FROM NC 86/US 158 (MP 13.62) TO NC 57 (MP 25.38)		2		0.066	24		1,322	948	17,700	124,608			111,858			292			779				
		"				2		1.508	24																		
		"				2		1.466	24																		
		"				2		0.777	24																		
		"				2		0.35	24																		
		"				2		0.4	24																		
		"				2		0.809	24																		
		"				2		0.161	24																		
		"				2		0.515	24																		
		"				2		0.672	24																		
		"				2		1.108	24																		
		"				2		0.597	24																		
		"				2		0.136	24																		
		"				2		0.678	24																		
		"				2		0.625	24																		
"		2		1.364	24																						
"		2		0.339	24																						
"		2		0.049	24																						
"		2		0.183	24																						
TOTAL FOR MAP NO. 3								11.803			1,322	948	17,700	124,608			111,858			292			779				
TOTAL FOR PROJ NO. 2016CPT.07.12.10171								12.22		14	1,356	1,010	18,400	128,030	223	116,468	361	1	292	63	0	2	821				
										1,370				128,253		116,829				2							
GRAND TOTAL								12.22		14	1,356	1,010	18,400	128,030	223	116,468	361	1	292	63	0	2	821				
										1,370				128,253		116,829				2							