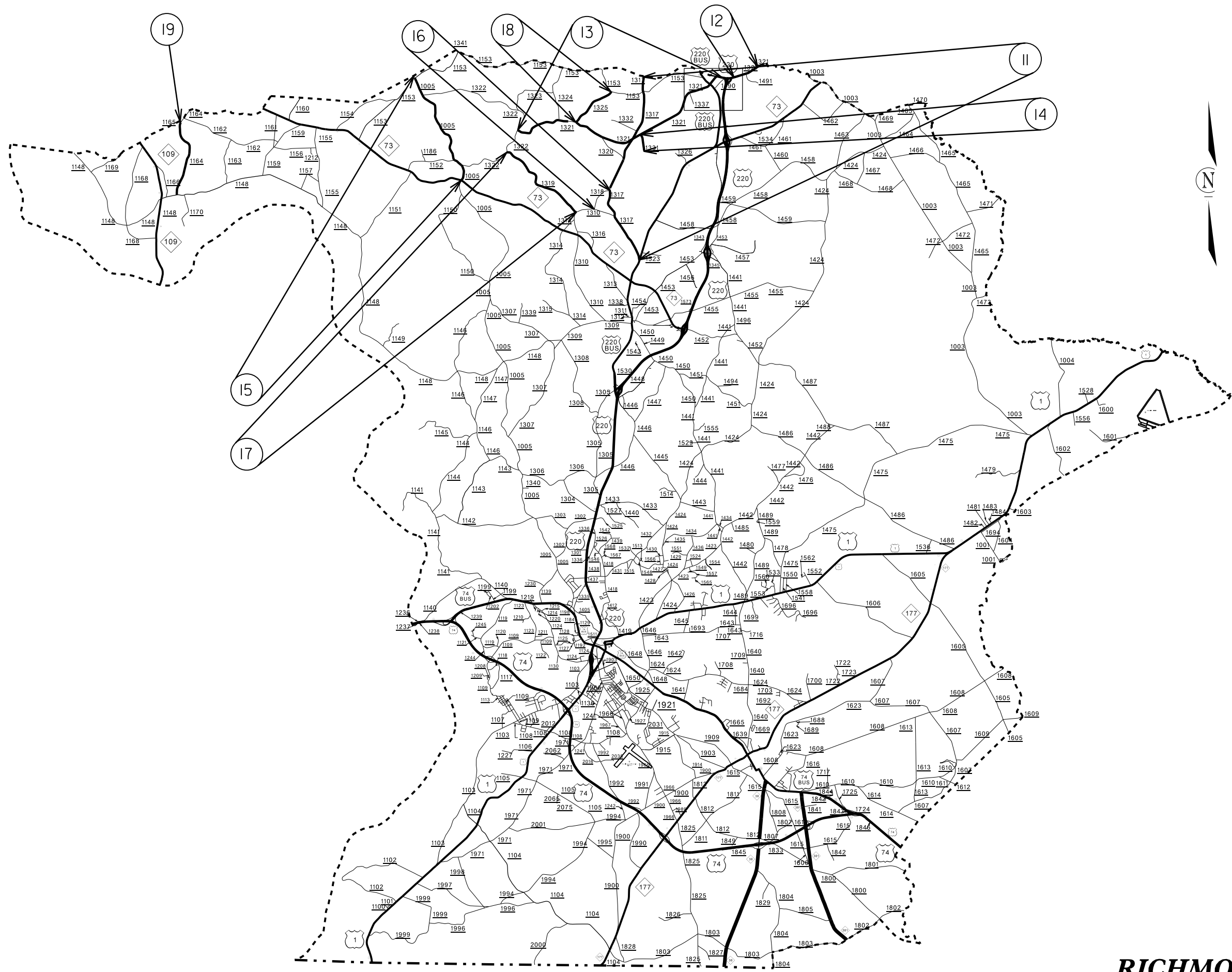


MONTGOMERY COUNTY
SEAL MAP

040397
 05-MAP-2019-13-47
 \Mcs\ch\ch\118-3126-01\Montgomery_Richmond\2020_MONTGOMERY_SEAL_MAPS.dgn

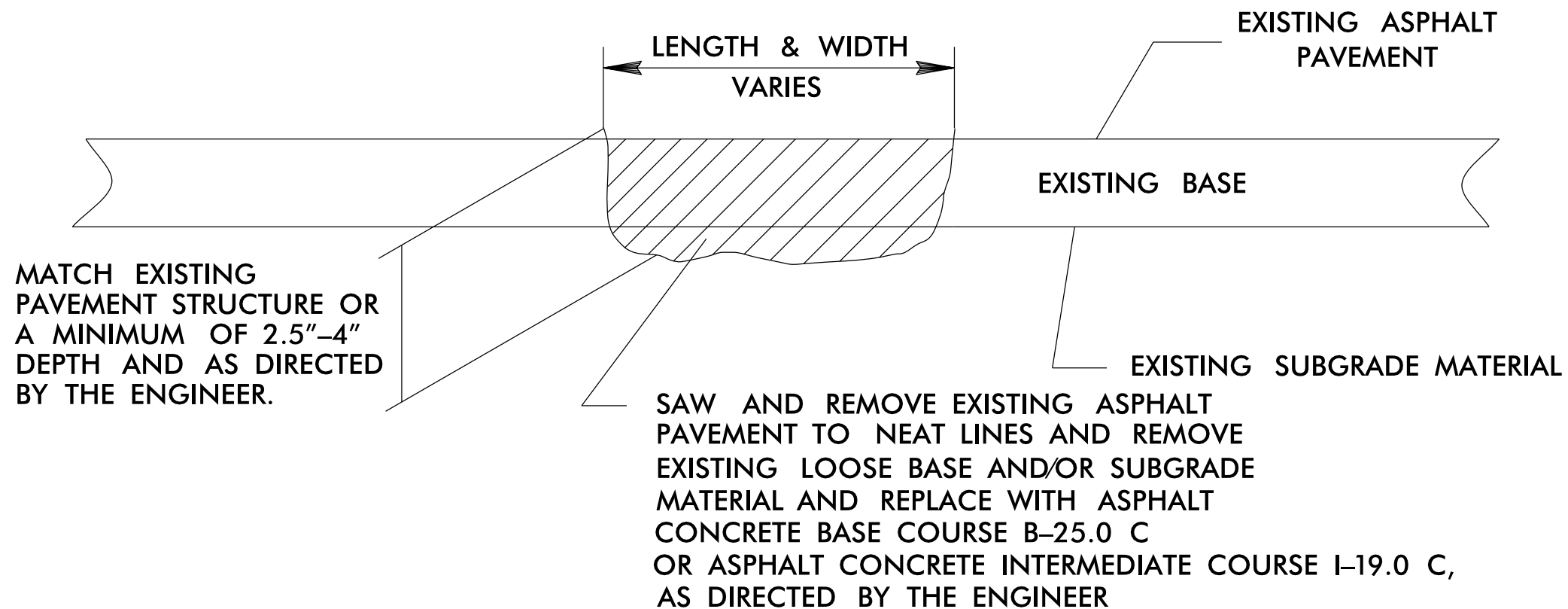


RICHMOND COUNTY

040397
E:\13-FEB-2019-1452-Richmond\Montgomery-Richmond\Richmond AST 2020.dgn
2/13/2019 10:16:11 AM

DETAILS OF PATCHING EXISTING PAVEMENT PRIOR TO RESURFACING

DETAIL

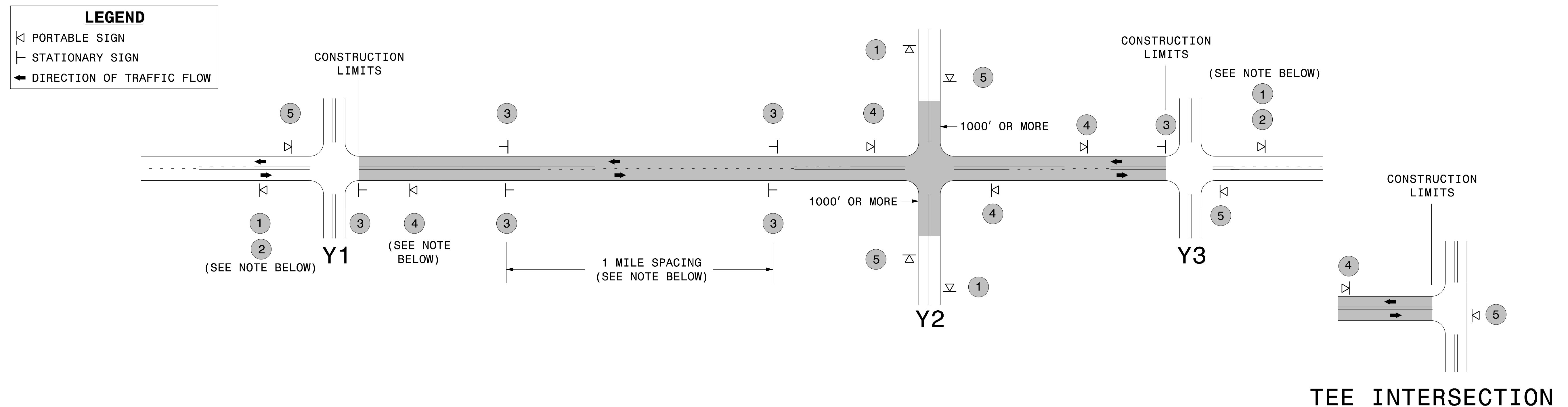


PROJECT NO.	SHEET NO.	TOTAL NO.
2019CPT.08.13.20622	4	
2019CPT.08.13.20772		

SUMMARY OF QUANTITIES

PROJECT NO	COUNTY	MAP NO	ROUTE	DESCRIPTION	LENGTH	WIDTH	1704000000-E	1803500000-E	1838000000-E	1838500000-N	2143000000-E	4413000000-E	4457000000-N	4810000000-E	4810000000-E
							PATCHING EXISTING PAVEMENT	ASPHALT SURFACE TREATMENT, DOUBLE SEAL	EMULSION FOR ASPHALT SURFACE TREATMENT	VACUUM TRUCK	BLOTTING SAND	WORK ZONE ADVANCE/GENERAL WARNING SIGNING	TEMPORARY TRAFFIC CONTROL	4" WHITE PAINT	4" YELLOW PAINT
					MI	FT	TONS	SY	GAL	WK	TON	SF	LS	LF	LF
2019CPT.08.13.20622	Montgomery	1	SR 1346 (MC BRIDE LUMBER RD)	FROM PVT. JT NORTH OF SOUTHERN CONNECTION OF US 220 ALT. TO INTERSECTION OF ALT. 220 NORTHERN CONNECTION	1.3	20	150	15,300.00	8,450			150		27,976	27,976
TOTAL FOR MAP NO. 1					1.3		150	15,300.00	8,450			150		27,976	27,976
2019CPT.08.13.20622	Montgomery	2	SR 1371 (COTTON CREEK RD)	FROM PVT. JT NC 24/27 TO SR 1369 (GRIFFEN RD)	1.93	21	160	24,000.00	13,200			220		41,534	41,534
TOTAL FOR MAP NO. 2					1.93		160	24,000.00	13,200			220		41,534	41,534
2019CPT.08.13.20622	Montgomery	3	SR 1374 (DAVIS RD)	FROM SR 1362 (STEED RD.) TO MOORE CO.	0.483	20	10	5,700.00	3,135			60		10,394	10,394
TOTAL FOR MAP NO. 3					0.483		10	5,700.00	3,135			60		10,394	10,394
2019CPT.08.13.20622	Montgomery	4	SR 1502 (MARTIN RD)	FROM PVT. JT SOUTH OF NC 24/27 TO SR 1500 (POST OFFICE RD.)	0.642	20	20	7,550.00	4,160			80		13,816	13,816
TOTAL FOR MAP NO. 4					0.642		20	7,550.00	4,160			80		13,816	13,816
2019CPT.08.13.20622	Montgomery	5	SR 1507 (LEACH RD)	FROM SR 1509 (COLE RD.) TO DEAD END	0.494	20	20	5,800.00	3,200			60		10,631	10,631
TOTAL FOR MAP NO. 5					0.494		20	5,800.00	3,200			60		10,631	10,631
2019CPT.08.13.20622	Montgomery	6	SR 1511 (BRUTONVILLE RD.)	FROM US 220 ALT. TO DEAD END	0.966	24	20	13,610.00	7,500			110		20,788	20,788
TOTAL FOR MAP NO. 6					0.966		20	13,610.00	7,500			110		20,788	20,788
2019CPT.08.13.20622	Montgomery	7	SR 1514 (DOWD RD.)	FROM SR 1608 (S.WHISKEY RD.) TO MOORE CO.	1.824	18	100	19,300.00	10,620			210		39,252	39,252
TOTAL FOR MAP NO. 7					1.824		100	19,300.00	10,620			210		39,252	39,252
2019CPT.08.13.20622	Montgomery	8	SR 1352 (MANESS RD.)	FROM 2 MILES S FROM SR 1311 (BRANDY RD.) TO SR SR 1340 (OKEEWEMEE RD.)	1.01	20		34,966.00	19,231			120		43,470	43,470
TOTAL FOR MAP NO. 8					1.01			34,966.00	19,231			120		43,470	43,470
2019CPT.08.13.20622	Montgomery	9	SR 1307 (HORSE SHOE BEND RD.)	FROM SR 1310 (LOVE JOY RD.) TO SR 1306 (FLINT HILL RD.)	3.388	20		39,753.00	21,864			380		72,910	72,910
TOTAL FOR MAP NO. 9					3.388			39,753.00	21,864			380		72,910	72,910
2019CPT.08.13.20622	Montgomery	10	SR 1357 (SMITH FARM RD.)	FROM SR SR 1354 (BLACK ANKLE RD.) TO NC 134	1.44	20		16,897.00	9,293			165		30,989	30,989
TOTAL FOR MAP NO. 10					1.44			16,897.00	9,293	*	*	165	*	30,989	30,989
TOTAL FOR PROJ NO. 2019CPT.08.13.20622					13.477		480	182,876.00	100,653	9	25	1,555	1	311,760	311,760
														623,520	
2019CPT.08.13.20772	Richmond	11	SR 1317(CLAYTON CARRIKER RD.)	FROM US HWY 220 TO MONTGOMERY CO.	5.79	20		79,655.00	43,811			649		123,388	104,910
TOTAL FOR MAP NO. 11					5.79			79,655.00	43,811			649		123,388	104,910
2019CPT.08.13.20772	Richmond	12	SR 1321(CAPEL MILL RD.)	FROM C.J. E.OF US HWY 73/74 TO MONTGOMERY CO.	0.71	20		9,892.00	5,441			80		15,090	14,226
TOTAL FOR MAP NO. 12					0.71			9,892.00	5,441			80		15,090	14,226
2019CPT.08.13.20772	Richmond	13	SR 1321 (CAPEL MILL RD.)	FROM E. NORMAN C.L. TO SR 1322(CONCORD CH. RD.)	6.75	20		77,829.00	42,861			756	1.0000	143,108	117,292
TOTAL FOR MAP NO. 13					6.75			77,829.00	42,861			756	1	143,108	117,292
2019CPT.08.13.20772	Richmond	14	SR 1331 (PUCKETT RD.)	FROM SR 1321(CLAYTON CARRIKER RD.) TO DEAD END	0.47	20		6,029.00	3,316			53			
TOTAL FOR MAP NO. 14					0.47			6,029.00	3,316			53			
2019CPT.08.13.20772	Richmond	15	SR 1005 (EVERETT CHAPPEL RD)	FROM MONTGOMERY CO. TO NC HWY 73	3.51	22		47,399.00	26,069			394		74,906	70,028
TOTAL FOR MAP NO. 15					3.51			47,399.00	26,069			394		74,906	70,028
2019CPT.08.13.20772	Richmond	16	SR 1319 (GODFREY RD.)	FROM SR 1317(CLAYTON CARRIKER RD.) TO SR 1310(BENNET RD.)	0.76	16		8,391.00	4,616			86		16,588	14,110
TOTAL FOR MAP NO. 16					0.76			8,391.00	4,616			86		16,588	14,110
2019CPT.08.13.20772	Richmond	17	SR 1319 (SARON CH. RD.)	FROM SR 1310(BENNET RD.) TO SR 1322(CONCORD CH. RD.)	2.87	17		28,697.00	15,784			322		60,736	55,388
TOTAL FOR MAP NO. 17					2.87			28,697.00	15,784			322		60,736	55,388
2019CPT.08.13.20772	Richmond	18	SR 1325 (DAN GRAHAM RD.)	FROM SR 1153(COUNTY LINE RD.) TO SR 1321(CAPEL MILL RD.)	1.38	20		16,968.00	9,333			155		29,488	26,544
TOTAL FOR MAP NO. 18					1.38			16,968.00	9,333			155		29,488	26,544
2019CPT.08.13.20772	Richmond	19	SR 1165 (ED HARRIS DR.)	FROM SR 1164(DAVIS HAYWOOD RD.) TO MONTGOMERY CO.	0.04	19		593.00	327			5		794	732
TOTAL FOR MAP NO. 19					0.04			593.00	327	*	*	5		794	732
TOTAL FOR PROJ NO. 2019CPT.08.13.20772					22.28			275,453.00	151,558	14	50	2,500	1	464,098	403,230
														867,328	
GRAND TOTAL					35.757		480	458,329.00	252,211	23	75	4,055	2	775,858	714,990
														1,490,848	

SIGNING FOR ASPHALT SURFACE TREATMENT



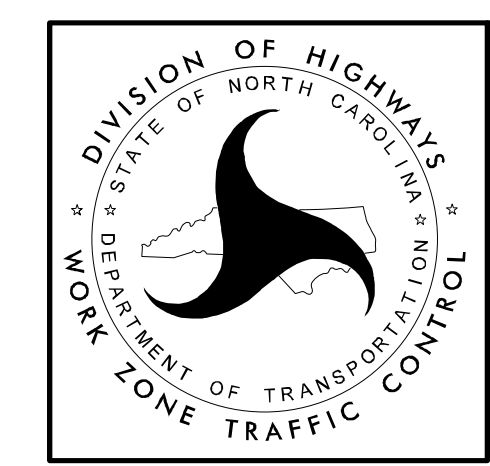
MAINLINE (-L-) SIGNING

-Y- LINE SIGNING

SIGNING NOTES AND PLACEMENT PER DIRECTION	1	 	<ul style="list-style-type: none"> - PLACE 1000' PRIOR TO BEGINNING OF CONSTRUCTION LIMITS. ONLY USED ON -Y- LINES IF RESURFACING LIMITS EXTEND 1000' ALONG -Y- LINE. - SIGN #2 ONLY USED WHEN RESURFACING LIMITS ARE 2 OR MORE MILES IN LENGTH. ROUND UP TO THE NEAREST WHOLE NUMBER. DO NOT USE FRACTIONAL OR DECIMAL NUMBERS. 	<p>STATIONARY SIGNING NOT REQUIRED FOR THE FOLLOWING -Y- LINE CONDITIONS:</p> <ol style="list-style-type: none"> 1) LESS THAN 1000' OF RESURFACING ALONG -Y- LINE 2) SUBDIVISION ROADS 3) DEAD END ROADS <p>WHEN PAVING/CONSTRUCTION ACTIVITIES PROCEED ACROSS AN UNSIGNED -Y- LINE, PORTABLE ADVANCE WARNING SIGNS SHALL BE USED ALONG THE -Y- LINE AS SHOWN BELOW. REMOVE UPON COMPLETION OF WORK.</p> <div style="display: flex; justify-content: space-around; align-items: center;"> <div style="text-align: center;"> W20-1 48" X 48" PLACED 500' IN ADVANCE OF FLAGGER. </div> <div style="text-align: center;"> W20-7 A 48" X 48" PLACED 250' IN ADVANCE OF FLAGGER. </div> </div>
	3	 	<ul style="list-style-type: none"> - ALTERNATE THE FOLLOWING TWO SIGNS: - STARTING WITH "LOOSE GRAVEL" (W8-7) FOLLOWED BY "UNMARKED PAVEMENT". - PLACE INITIALLY AT THE CONSTRUCTION LIMITS AND SPACED 1 MILE APART THEREAFTER. - AT TEE INTERSECTIONS INSTALL INITIALLY 0.5 MILE FROM INTERSECTION AND SPACE 1 MILE APART THEREAFTER. 	
	4		<ul style="list-style-type: none"> - THESE ARE FOR -Y- LINES THAT ARE "THROUGH" ROADWAYS. DEAD END AND SUBDIVISION ROADS ARE NOT "THROUGH" ROADWAYS. - INSTALL 500' +/- FROM EACH -Y- LINE APPROACH AS SHOWN ABOVE. - FOR MULTIPLE -Y- LINES THAT ARE SEPARATED BY 0.25 MILES OR LESS, TREAT AS A SINGLE UNIT AND INSTALL WITHIN 500' OF EACH APPROACH. - A MAXIMUM OF 2 SIGN SETS PER MILE. DO NOT INSTALL WHEN -Y- LINES ARE WITHIN 0.5 MILES FROM "END ROAD WORK" SIGN. 	
	5		<ul style="list-style-type: none"> - PLACE 500' FOLLOWING THE END OF CONSTRUCTION LIMITS OR AS SHOWN WHEN WORK ENDS AT A 3-WAY TEE INTERSECTION. 	
	<p>THE ABOVE SIGNS ARE ALL THAT ARE REQUIRED FOR A CONTRACTOR TO BEGIN A RESURFACING CONTRACT. ANY ADDITIONAL SIGNS REQUESTED BY NCDOT DIVISIONS SHALL BE INSTALLED WITHIN 7 BUSINESS DAYS OF THE START OF CONTRACT WORK.</p>			

MAPS LESS THAN 2 MILES

FOR AST RESURFACING MAPS WITH CONSTRUCTION LIMITS LESS THAN 2 MILES IN LENGTH, USE A STATIONARY "LOOSE GRAVEL" SIGN AT THE BEGINNING CONSTRUCTION LIMIT FOLLOWED BY AN "UNMARKED PAVEMENT" SIGN MIDWAY THROUGH AND AN "END ROAD WORK" SIGN AT THE END CONSTRUCTION LIMIT.



ADVANCE WARNING SIGNS FOR 2-LANE ROADWAY ASPHALT SURFACE TREATMENT