

STATE OF NORTH CAROLINA
DIVISION OF HIGHWAYS

TRANSPORTATION MANAGEMENT PLAN

FORSYTH COUNTY

DIVISION 9



FORSYTH CO. BRIDGE #27 - US 52/NC 8 (JOHN GOLD MEMORIAL EXPY.) NORTHBOUND OVER OLD US 52
FORSYTH CO. BRIDGE #28 - US 52/NC 8 (JOHN GOLD MEMORIAL EXPY.) SOUTHBOUND OVER OLD US 52

SHEET NO.
TMP-1

INDEX OF SHEETS

SHEET NO.	TITLE
TMP-1	TITLE SHEET AND INDEX OF SHEETS
TMP-1A	LIST OF APPLICABLE ROADWAY STANDARD DRAWINGS, AND LEGEND
TMP-2	TRANSPORTATION OPERATIONS PLAN: TRAFFIC MANAGEMENT STRATEGY AND GENERAL NOTES
TMP-3	TEMPORARY TRAFFIC CONTROL PHASING
TMP-4	FORSYTH CO. BRIDGE #27 - BRIDGE CLOSURE
TMP-5	FORSYTH CO. BRIDGE #28 - BRIDGE CLOSURE

4/10/2015 10:47:10 AM C:\TrafficControl\BP 5500R_Forsyth\TMP\Title.dwg SHEET:BP-5500R-TMP-DL-TITLE.dwg gngood



N.C.D.O.T. WORK ZONE TRAFFIC CONTROL
 1561 MAIL SERVICE CENTER (MSC) RALEIGH, NC 27699-1561
 750 N. GREENFIELD PARKWAY, GARNER, NC 27529 (DELIVERY)
 PHONE: (919) 713-2800 FAX: (919) 771-2745

D.W. BISSETTE, PE CENTRAL WORK ZONE TRAFFIC CONTROL ENGINEER

MIKE STEELMAN TRAFFIC CONTROL PROJECT DESIGN ENGINEER

D. ALLEN HAYES, EI TRAFFIC CONTROL DESIGN ENGINEER



Stantec
 Stantec Consulting Services Inc. Tel. 919.851.6866
 801 Jones Franklin Rd-Suite 300 Fax 919.851.7024
 Raleigh, NC 27608 www.stantec.com
 License No. F-0672

BETSY L. WATSON, PE SENIOR TRANSPORTATION ENGINEER
GEORGE M. KARAGEORGE, PE SENIOR TRANSPORTATION ENGINEER
ANDREW N. GOOD TRAFFIC TECHNICIAN

APPROVED: _____
 DATE: _____

SEAL

4/10/15

BP-5500R

ROADWAY STANDARD DRAWINGS

THE FOLLOWING ROADWAY STANDARDS AS APPEAR IN "ROADWAY STANDARD DRAWINGS" - PROJECT SERVICES UNIT - N.C. DEPARTMENT OF TRANSPORTATION - RALEIGH, N.C., DATED JANUARY 2012 ARE APPLICABLE TO THIS PROJECT AND BY REFERENCE HEREBY ARE CONSIDERED A PART OF THESE PLANS:

STD. NO.	TITLE
1101.01	WORK ZONE ADVANCE WARNING SIGNS
1101.02	TEMPORARY LANE CLOSURES
1101.03	TEMPORARY ROAD CLOSURES
1101.04	TEMPORARY SHOULDER CLOSURES
1101.05	WORK ZONE VEHICLE ACCESSES
1101.06	WARNING SIGNS FOR BLASTING ZONES
1101.11	TRAFFIC CONTROL DESIGN TABLES
1110.01	STATIONARY WORK ZONE SIGNS
1110.02	PORTABLE WORK ZONE SIGNS
1115.01	FLASHING ARROW BOARDS
1130.01	DRUMS
1135.01	CONES
1145.01	BARRICADES
1150.01	FLAGGING DEVICES
1160.01	TEMPORARY CRASH CUSHION
1165.01	WORK VEHICLE LIGHTING SYSTEMS AND TMA DELINEATION
1170.01	PORTABLE CONCRETE BARRIER
1180.01	SKINNY - DRUM
1205.01	PAVEMENT MARKINGS - LINE TYPES AND OFFSETS
1205.02	PAVEMENT MARKINGS - TWO LANE AND MULTILANE ROADWAYS
1205.03	PAVEMENT MARKINGS - EXITS AND ENTRANCE RAMPS
1205.04	PAVEMENT MARKINGS - INTERSECTIONS
1205.05	PAVEMENT MARKINGS - TURN LANES
1205.06	PAVEMENT MARKINGS - LANE DROPS
1205.07	PAVEMENT MARKINGS - PEDESTRIAN CROSSWALKS
1205.08	PAVEMENT MARKINGS - SYMBOLS AND WORD MESSAGES
1205.09	PAVEMENT MARKINGS - PAINTED ISLANDS
1205.10	PAVEMENT MARKINGS - SCHOOL AREAS
1205.11	PAVEMENT MARKINGS - RAILROAD CROSSINGS
1205.12	PAVEMENT MARKINGS - BRIDGES
1205.13	PAVEMENT MARKINGS - LANE REDUCTIONS
1250.01	RAISED PAVEMENT MARKERS - INSTALLATION SPACING
1251.01	RAISED PAVEMENT MARKERS - (PERMANENT AND TEMPORARY)
1253.01	RAISED PAVEMENT MARKERS - SNOWPLOWABLE
1261.01	GUARDRAIL AND BARRIER DELINEATORS - INSTALLATION SPACING
1261.02	GUARDRAIL AND BARRIER DELINEATORS - TYPES AND MOUNTING
1262.01	GUARDRAIL END DELINEATION
1264.01	OBJECT MARKERS - TYPES
1264.02	OBJECT MARKERS - INSTALLATION

LEGEND

GENERAL

- DIRECTION OF TRAFFIC FLOW
- DIRECTION OF PEDESTRIAN TRAFFIC FLOW
- EXIST. PVMT.
- PROPOSED PVMT.
- NORTH ARROW
- TEMP. SHORING (LOCATION PURPOSES ONLY)

- WORK AREA
- CONSTRUCTION STARTED FROM PREVIOUS PHASE
- PAVEMENT REMOVAL
- TEMPORARY PAVEMENT

SIGNALS

- EXISTING
- PROPOSED
- TEMPORARY

PAVEMENT MARKINGS

- EXISTING LINES
- TEMPORARY LINES

TRAFFIC CONTROL DEVICES

- BARRICADE (TYPE III)
- CONE
- DRUM
- SKINNY DRUM
- TUBULAR MARKER
- FLASHING ARROW BOARD
- FLAGGER
- LAW ENFORCEMENT
- TRUCK MOUNTED ATTENUATOR (TMA)
- CHANGEABLE MESSAGE SIGN
- TEMPORARY CRASH CUSHION
- PORTABLE CONCRETE BARRIER

TEMPORARY SIGNING

- PORTABLE SIGN
- STATIONARY SIGN
- STATIONARY OR PORTABLE SIGN

PAVEMENT MARKERS

- CRYSTAL/CRYSTAL
- CRYSTAL/RED
- YELLOW/YELLOW

PAVEMENT MARKING SYMBOLS

- PAVEMENT MARKING SYMBOLS
- EXISTING PAVEMENT MARKING SYMBOLS (HOLLOW)
- ONLY PAVEMENT MARKING ALPHANUMERIC CHARACTERS

4/10/2015 10:17:11 AM TrafficControl\BP-5500R_TMP-1A_R10WYST\LEGEND.dgn

<p style="font-size: small;">Stantec Consulting Services Inc. 801 Jones Franklin Road-Suite 300 Raleigh, NC 27606 Tel. (919) 851-6866 Fax (919) 851-7024 www.stantec.com License No. F-0672</p>	APPROVED: _____ DATE: _____		
	SEAL		

GENERAL NOTES

CHANGES MAY BE REQUIRED WHEN PHYSICAL DIMENSIONS IN THE DETAIL DRAWINGS, STANDARD DETAILS, AND ROADWAY DETAILS ARE NOT ATTAINABLE TO MEET FIELD CONDITIONS OR RESULT IN DUPLICATE OR UNDESIRED OVERLAPPING OF DEVICES. MODIFICATION MAY INCLUDE: MOVING, SUPPLEMENTING, COVERING, OR REMOVAL OF DEVICES AS DIRECTED BY THE ENGINEER.

THE FOLLOWING GENERAL NOTES APPLY AT ALL TIMES FOR THE DURATION OF THE CONSTRUCTION PROJECT EXCEPT WHEN OTHERWISE NOTED IN THE PLAN OR DIRECTED BY THE ENGINEER.

TIME RESTRICTIONS

A) DO NOT CLOSE OR NARROW TRAVEL LANES AS FOLLOWS:

ROAD NAME	DAY AND TIME RESTRICTIONS
US 52/OLD US 52	6:00 A.M.-8:00 P.M. MONDAY THRU SUNDAY (EVERY DAY)

B) DO NOT CLOSE OR NARROW TRAVEL LANES DURING HOLIDAYS AND SPECIAL EVENTS AS FOLLOWS:

ROAD NAME
ALL ROADS

HOLIDAY

- 1) FOR ANY UNEXPECTED OCCURRENCE THAT CREATES UNUSUALLY HIGH TRAFFIC VOLUMES, AS DIRECTED BY THE ENGINEER.
- 2) FOR NEW YEAR'S, BETWEEN THE HOURS OF 6:00 A.M. DECEMBER 31ST TO 8:00 P.M. JANUARY 2ND. IF NEW YEAR'S DAY IS ON A FRIDAY, SATURDAY, SUNDAY, OR MONDAY THEN UNTIL 8:00 P.M. THE FOLLOWING TUESDAY.
- 3) FOR EASTER, BETWEEN THE HOURS OF 6:00 A.M. THURSDAY AND 8:00 P.M. MONDAY.
- 4) FOR MEMORIAL DAY, BETWEEN THE HOURS OF 6:00 A.M. FRIDAY TO 8:00 P.M. TUESDAY.
- 5) FOR INDEPENDENCE DAY, BETWEEN THE HOURS OF 6:00 A.M. THE DAY BEFORE INDEPENDENCE DAY AND 8:00 P.M. THE DAY AFTER INDEPENDENCE DAY. IF INDEPENDENCE DAY IS ON A FRIDAY, SATURDAY, SUNDAY OR MONDAY; THEN BETWEEN THE HOURS OF 6:00 A.M. THE THURSDAY BEFORE INDEPENDENCE DAY AND 8:00 P.M. THE TUESDAY AFTER INDEPENDENCE DAY.
- 6) FOR LABOR DAY, BETWEEN THE HOURS OF 6:00 A.M. FRIDAY AND 8:00 P.M. TUESDAY.
- 7) FOR THANKSGIVING DAY, BETWEEN THE HOURS OF 6:00 A.M. TUESDAY TO 8:00 P.M. MONDAY.
- 8) FOR CHRISTMAS, BETWEEN THE HOURS OF 6:00 A.M. THE FRIDAY BEFORE THE WEEK OF CHRISTMAS DAY AND 8:00 P.M. THE FOLLOWING TUESDAY AFTER THE WEEK OF CHRISTMAS.
- 9) FOR BB&T BALLPARK EVENTS (WINSTON-SALEM DASH GAMES), WINSTON-SALEM AIR SHOW, WAKE FOREST UNIVERSITY EVENTS, LAWRENCE JOEL VETERANS MEMORIAL COLISEUM EVENTS, BB&T FIELD EVENTS, WINSTON-SALEM STATE UNIVERSITY EVENTS, BOWMAN GREY STADIUM EVENTS, DIXIE CLASSIC FAIR, AND ANY OTHER EVENTS AS DETERMINED BY THE ENGINEER, FOR THREE (3) HOURS BEFORE THE EVENT AND THREE (3) HOURS FOLLOWING THE EVENT.

C) DO NOT CLOSE ROADS AS FOLLOWS:

ROAD NAME	DAY AND TIME RESTRICTIONS	DURATION / OPERATION
US 52	5:00 A.M.-8:00 P.M. MONDAY THRU SUNDAY (EVERY DAY)	9 HOUR ALLOWABLE CLOSURE WITH "ALL TRAFFIC EXIT" CONDITION FOR LMC OVERLAY OF BRIDGES 27 AND 28 WITH ONLY ONE DIRECTION OF US 52 CLOSED AT ONE TIME.

LANE AND SHOULDER CLOSURE REQUIREMENTS

- D) REMOVE LANE CLOSURE DEVICES FROM THE LANE WHEN WORK IS NOT BEING PERFORMED BEHIND THE LANE CLOSURE OR WHEN A LANE CLOSURE IS NO LONGER NEEDED OR AS DIRECTED BY THE ENGINEER.
- E) WHEN PERSONNEL AND/OR EQUIPMENT ARE WORKING WITHIN 15 FT OF AN OPEN TRAVEL LANE, CLOSE THE NEAREST OPEN SHOULDER USING ROADWAY STANDARD DRAWING NO. 1101.04 UNLESS THE WORK AREA IS PROTECTED BY BARRIER OR GUARDRAIL OR A LANE CLOSURE IS INSTALLED.
- F) WHEN PERSONNEL AND/OR EQUIPMENT ARE WORKING ON THE SHOULDER ADJACENT TO AN UNDIVIDED FACILITY AND WITHIN 5 FT OF AN OPEN TRAVEL LANE, CLOSE THE NEAREST OPEN TRAVEL LANE USING ROADWAY STANDARD DRAWING NO. 1101.02 UNLESS THE WORK AREA IS PROTECTED BY BARRIER OR GUARDRAIL.
- G) WHEN PERSONNEL AND/OR EQUIPMENT ARE WORKING WITHIN A LANE OF TRAVEL OF AN UNDIVIDED OR DIVIDED FACILITY, CLOSE THE LANE ACCORDING TO THE TRANSPORTATION MANAGEMENT PLANS, ROADWAY STANDARD DRAWINGS, OR AS DIRECTED BY THE ENGINEER. CONDUCT THE WORK SO THAT ALL PERSONNEL AND/OR EQUIPMENT REMAIN WITHIN THE CLOSED TRAVEL LANE.
- H) DO NOT WORK SIMULTANEOUSLY WITHIN 15 FT ON BOTH SIDES OF AN OPEN TRAVELWAY, RAMP, OR LOOP WITHIN THE SAME LOCATION UNLESS PROTECTED WITH GUARDRAIL OR BARRIER.

TRAFFIC PATTERN ALTERATIONS

- I) NOTIFY THE ENGINEER TWENTY ONE (21) CALENDAR DAYS PRIOR TO ANY TRAFFIC PATTERN ALTERATION.

SIGNING

- J) PROVIDE SIGNING AND DEVICES REQUIRED TO CLOSE THE ROAD ACCORDING TO THE ROADWAY STANDARD DRAWINGS AND TRANSPORTATION MANAGEMENT PLANS.
- K) COVER OR REMOVE ALL SIGNS AND DEVICES REQUIRED TO CLOSE THE ROAD WHEN ROAD CLOSURE IS NOT IN OPERATION.
- L) ENSURE ALL NECESSARY SIGNING IS IN PLACE PRIOR TO ALTERING ANY TRAFFIC PATTERN.

TRAFFIC CONTROL DEVICES

- M) WHEN LANE CLOSURES ARE NOT IN EFFECT SPACE CHANNELIZING DEVICES IN WORK AREAS NO GREATER IN FEET THAN TWICE THE POSTED SPEED LIMIT (MPH), EXCEPT 10 FT ON-CENTER IN RADIUS, AND 3 FT OFF THE EDGE OF AN OPEN TRAVELWAY. REFER TO STANDARD SPECIFICATIONS FOR ROADS AND STRUCTURES SECTIONS 1130 (DRUMS), 1135 (CONES) AND 1180 (SKINNY DRUMS) FOR ADDITIONAL REQUIREMENTS.
- N) PLACE TYPE III BARRICADES WITH "ROAD CLOSED" SIGN R11-2 ATTACHED, OF SUFFICIENT LENGTH TO CLOSE ENTIRE ROADWAY.

PAVEMENT MARKINGS AND MARKERS

- O) IF NEEDED, INSTALL TEMPORARY PAVEMENT MARKINGS AND TEMPORARY PAVEMENT MARKERS ON INTERIM LAYERS OF PAVEMENT AS FOLLOWS:

ROAD NAME	MARKING	MARKER
US 52	PAINT	TEMPORARY RAISED

- P) PLACE ONE APPLICATION OF PAINT FOR TEMPORARY TRAFFIC PATTERNS. PLACE A SECOND APPLICATION OF PAINT SIX (6) MONTHS AFTER THE INITIAL APPLICATION AND EVERY SIX MONTHS AS DIRECTED BY THE ENGINEER.
- Q) TIE PROPOSED PAVEMENT MARKING LINES TO EXISTING PAVEMENT MARKING LINES.
- R) REMOVE/REPLACE ANY CONFLICTING/DAMAGED PAVEMENT MARKINGS AND MARKERS BEFORE OPENING TO TRAFFIC.


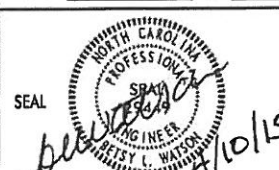


MISCELLANEOUS

- S) ENSURE THE OVERSIZED/OVERWEIGHT PERMIT UNIT (919) 733-4740 HAS BEEN ADVISED OF THE ONGOING TRAFFIC OPERATIONS THROUGH THE DIVISION OFFICE.
- T) USE LAW ENFORCEMENT TO MAINTAIN TRAFFIC THROUGH THE WORK AREA AND / OR INTERSECTIONS AS SHOWN IN PLANS OR DIRECTED BY THE ENGINEER.

TRAFFIC MANAGEMENT STRATEGY

BRIDGE PAINTING AND REPAIR OPERATIONS WILL BE ACCOMPLISHED USING TIME RESTRICTED LANE CLOSURES.

LMC OVERLAY OF BRIDGES 27 AND 28 WILL BE ACCOMPLISHED USING 9-HOUR OVERNIGHT BRIDGE CLOSURES, USING THE INTERCHANGE RAMPS AS A TEMPORARY ON-SITE DETOUR.

 Stantec Consulting Services Inc. 801 Jones Franklin Road-Suite 300 Raleigh, NC 27606 Tel (919) 851-8888 Fax (919) 851-7024 www.stantec.com License No. F-0872	APPROVED: _____ DATE: _____ 		TRANSPORTATION OPERATIONS PLAN TRAFFIC MANAGEMENT STRATEGY GENERAL NOTES
	SEAL 		

PHASING

FOR BOTH BRIDGES, IF LANE CLOSURES ARE NECESSARY ON OLD US 52, USE RSD 1101.02 SHEET 7 OF 15. IF LANE CLOSURES ARE NECESSARY ON US 52, USE RSD 1101.02 SHEETS 3, 6, AND / OR 10 OF 15. REFER TO LANE CLOSURE TIME RESTRICTIONS ON SHEET TMP-2.

DO NOT CLOSE BOTH DIRECTIONS OF US 52 AT THE SAME TIME.


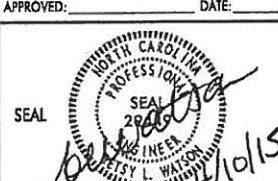

FORSYTH COUNTY BRIDGE #27 - US 52 NORTHBOUND OVER OLD US 52

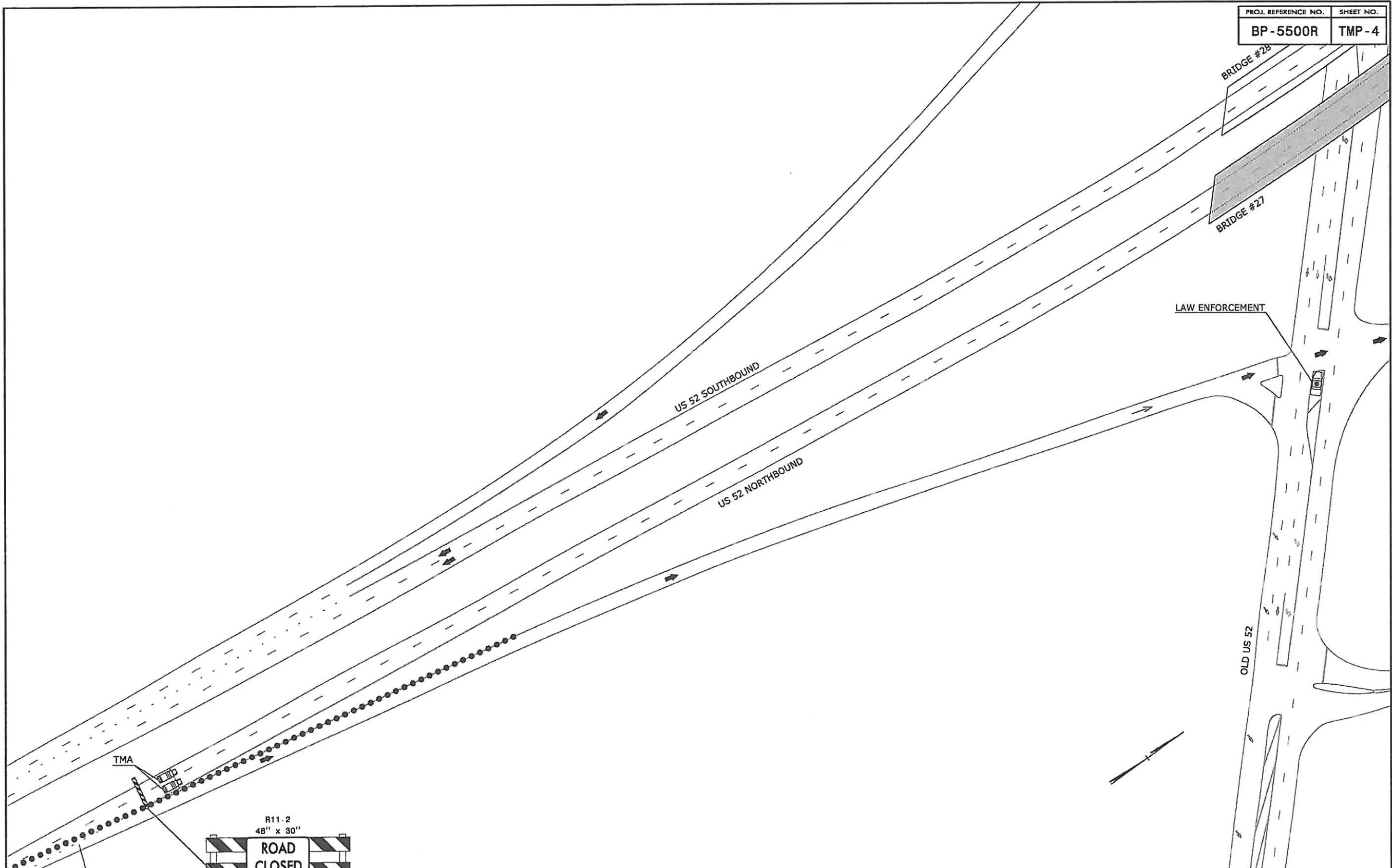
- STEP 1.**
BEGIN BRIDGE REPAIRS AND SECURE CONTAINMENT. IF NECESSARY, USE LANE CLOSURES ON OLD US 52 PER RSD 1101.02 SHEET 7 OF 15; AND LANE CLOSURES ON US 52 PER RSD 1101.02 SHEETS 3, 6, AND /OR 10 OF 15.
- STEP 2.**
INSTALL ROAD CLOSURE SIGNING ACCORDING TO TMP-4 AND RSD 1101.03 SHEET 7 OF 9, AND COVER SIGNS AS APPROPRIATE.
- STEP 3.**
IN ONE CONTINUOUS WORK PERIOD, UNCOVER ROAD CLOSURE SIGNING, AND INSTALL DEVICES TO CLOSE US 52 NORTHBOUND AND IMPLEMENT "ALL TRAFFIC EXIT CONDITION" PER SHEET TMP-4 AND RSD 1101.03 SHEET 7 OF 9.
- STEP 4.**
WITH US 52 NORTHBOUND CLOSED TO TRAFFIC, PERFORM LMC OVERLAY AND REPLACE PAVEMENT MARKINGS AND MARKERS FOR A PORTION OF THE BRIDGE THAT CAN BE COMPLETED IN ONE OVERNIGHT WORK PERIOD.
- STEP 5.**
REMOVE DEVICES AND COVER OR REMOVE SIGNS CLOSING US 52 NORTHBOUND, AND RE-OPEN BRIDGE #27 TO TRAFFIC.
- STEP 6.**
REPEAT STEPS 3, 4 AND 5 TO COMPLETE LMC OVERLAY OF THE ENTIRE BRIDGE.
- STEP 7.**
COMPLETE STEEL BEAM REPAIR, GIRDER PAINTING, AND ANY REMAINING WORK USING LANE CLOSURES ON US 52 AND / OR OLD US 52.
- STEP 8.**
REMOVE ALL WORK ZONE TRAFFIC CONTROL SIGNING AND DEVICES.

FORSYTH COUNTY BRIDGE #28 - US 52 SOUTHBOUND OVER OLD US 52

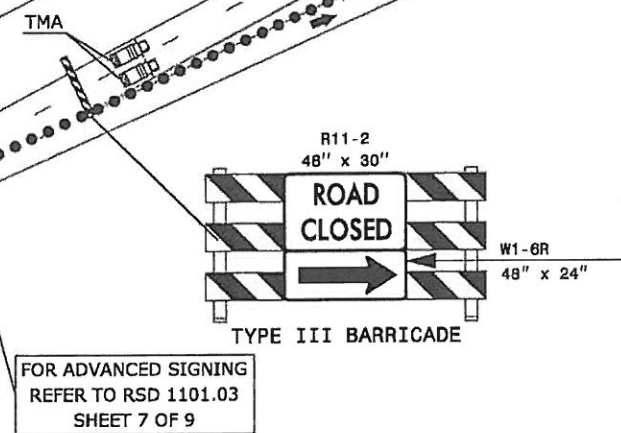
- STEP 1.**
BEGIN BRIDGE REPAIRS AND SECURE CONTAINMENT. IF NECESSARY, USE LANE CLOSURES ON OLD US 52 PER RSD 1101.02 SHEET 7 OF 15; AND LANE CLOSURES ON US 52 PER RSD 1101.02 SHEETS 3, 6, AND /OR 10 OF 15.
- STEP 2.**
INSTALL ROAD CLOSURE SIGNING ACCORDING TO TMP-5 AND RSD 1101.03 SHEET 7 OF 9, AND COVER SIGNS AS APPROPRIATE.
- STEP 3.**
IN ONE CONTINUOUS WORK PERIOD, UNCOVER ROAD CLOSURE SIGNING, AND INSTALL DEVICES TO CLOSE US 52 SOUTHBOUND AND IMPLEMENT "ALL TRAFFIC EXIT CONDITION" PER SHEET TMP-5 AND RSD 1101.03 SHEET 7 OF 9.
- STEP 4.**
WITH US 52 SOUTHBOUND CLOSED TO TRAFFIC, PERFORM LMC OVERLAY AND REPLACE PAVEMENT MARKINGS AND MARKERS FOR A PORTION OF THE BRIDGE THAT CAN BE COMPLETED IN ONE OVERNIGHT WORK PERIOD.
- STEP 5.**
REMOVE DEVICES AND COVER OR REMOVE SIGNS CLOSING US 52 SOUTHBOUND, AND RE-OPEN BRIDGE #28 TO TRAFFIC.
- STEP 6.**
REPEAT STEPS 3, 4 AND 5 TO COMPLETE LMC OVERLAY OF THE ENTIRE BRIDGE.
- STEP 7.**
COMPLETE STEEL BEAM REPAIR, GIRDER PAINTING, AND ANY REMAINING WORK USING LANE CLOSURES ON US 52 AND / OR OLD US 52.
- STEP 8.**
REMOVE ALL WORK ZONE TRAFFIC CONTROL SIGNING AND DEVICES.

4/10/2015
UN:\Traffic\TrafficControl\BP_5500R For\Traffic\TrafficControl\Sheets\BP-5500R-TMP-03-PHASING.dgn
angood

 <p style="font-size: small;">Stantec Consulting Services Inc. 801 Jones Franklin Road-Suite 300 Raleigh, NC 27606 Tel. (919) 851-6886 Fax. (919) 851-7024 www.stantec.com License No. F-0872</p>	<p>APPROVED: _____ DATE: _____</p> <p>SEAL</p> 		<h1 style="margin: 0;">PHASING</h1>
--	--	---	-------------------------------------

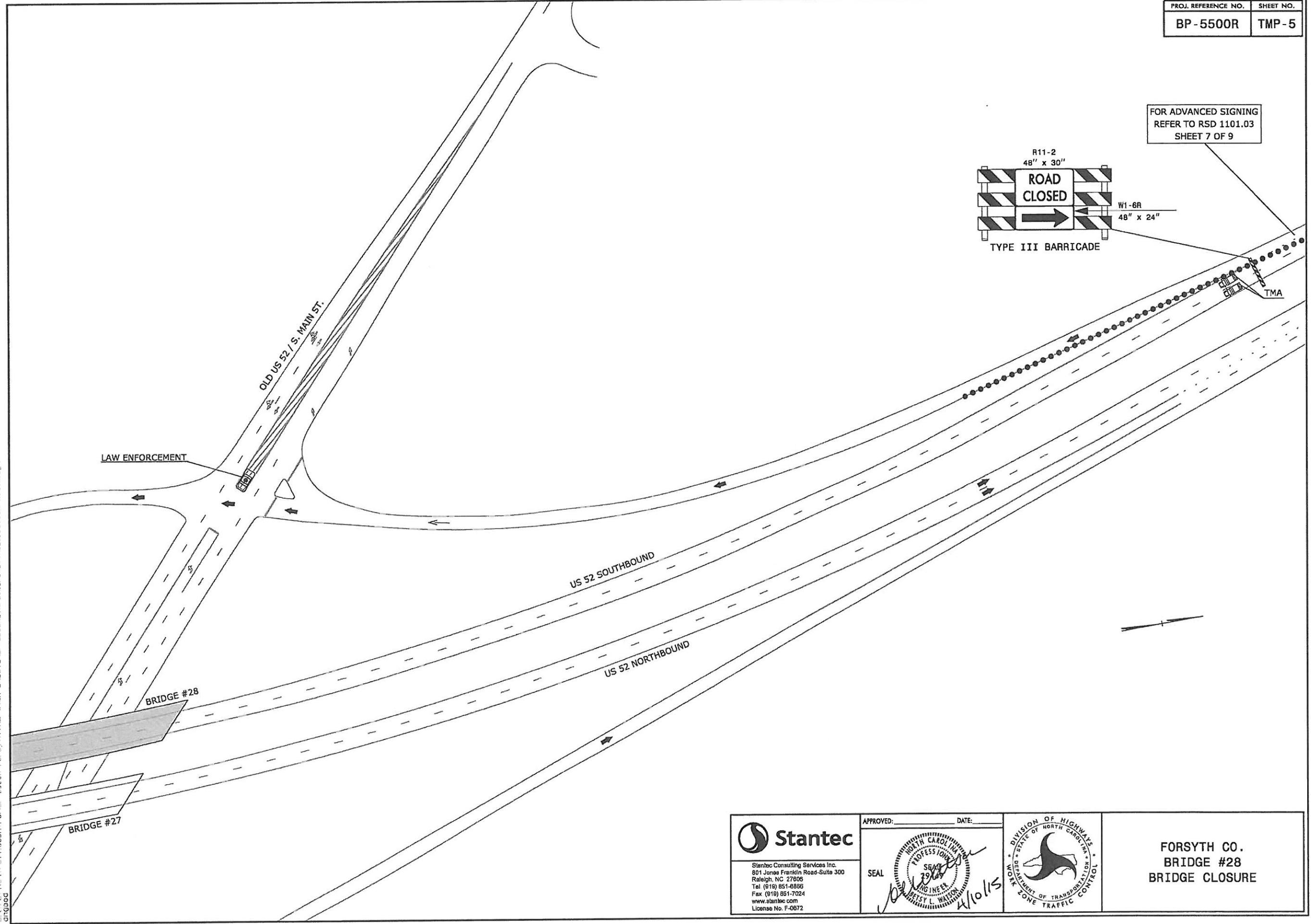
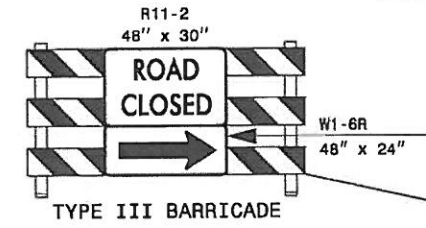


4/10/2015
 J:\raff\TrafficControl\BP_5500R_Forsyth\TMP\Plan_Sheets\BP_5500R_TMP_04_FORSYTH_27_DE TO IR_ROUTE.dgn
 angood



<p>Stantec Consulting Services Inc. 801 Jones Franklin Road-Suite 300 Raleigh, NC 27606 Tel. (919) 851-6868 Fax. (919) 851-7024 www.stantec.com License No. F-0872</p>	APPROVED: _____ DATE: _____ 		FORSYTH CO. BRIDGE #27 BRIDGE CLOSURE
	SEAL 		

FOR ADVANCED SIGNING
REFER TO RSD 1101.03
SHEET 7 OF 9



Z:\Q\2005\TrafficControl\BP_5500R_Forsyth\TMP\Final Sheets\BP-5500R_TMP_05_FORSYTH_28_DETOUR_ROUTE.dgn
01/03/06

<p>Stantec Stantec Consulting Services Inc. 801 Jones Franklin Road-Suite 300 Raleigh, NC 27606 Tel (919) 851-8886 Fax (919) 851-7024 www.stantec.com License No. F-0872</p>	APPROVED: _____ DATE: _____			<p>FORSYTH CO. BRIDGE #28 BRIDGE CLOSURE</p>
	SEAL			