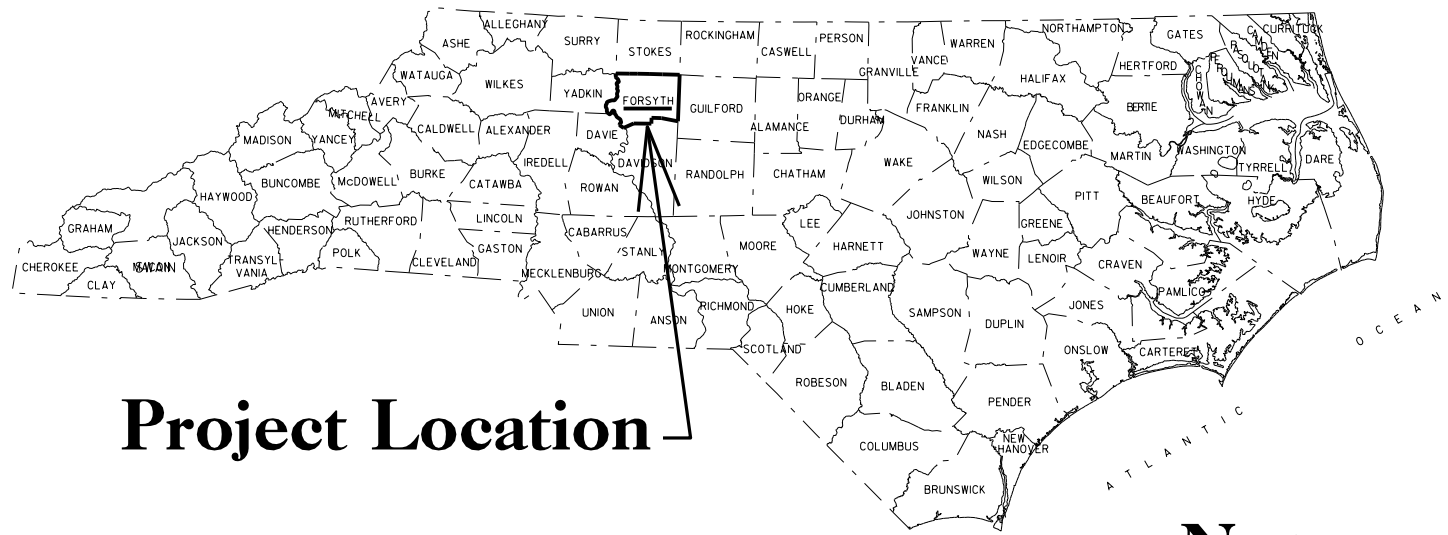


PROPOSED HIGHWAY LANDSCAPE DEVELOPMENT PROJECT

Summary of Quantities

Quan.	Unit	Key	Botanical Name	Common Name	Furnish	ASNS	Spacing
Ornamental Trees							
160	EA	AAB	<i>Amelanchier x grandiflora</i> 'Autumn Brilliance'	Autumn Brilliance Serviceberry	2-2 1/2" Cal., B&B, Single Straight Trunk, Single Leader, Well Branched, Matched Specimens	1.2.4	As shown on grid
33	EA	CC	<i>Cercis canadensis texensis</i> 'Oklahoma'	Oklahoma Redbud	7-8", B&B, Standard, Well Branched	1.2.1	As shown or as staked
32	EA	CK	<i>Cornus kousa</i> 'Milky Way Select'	Milky Way Select Dogwood	7-8", B&B, Standard, Well Branched	1.2.1	As shown or as staked
8	EA	CV	<i>Cornus x 'Venus' PP#16,309</i>	Venus Dogwood	1 1/2 to 2" Cal., B&B, Single Leader, Well Branched Specimens	1.2.4	As shown
44	EA	LS	<i>Lagerstroemia x 'Sioux'</i>	Sioux Crape Myrtle	5-6", B&B, 3-5 Stems, Matched specimens	1.2.4	As shown
16	EA	PS	<i>Prunus subhirtella</i> 'Autumnalis'	Autumn Flowering Cherry	1 1/2 to 2" Cal., B&B, Single Leader, Well Branched Specimens	1.2.4	As shown
Shade Trees							
12	EA	AR	<i>Acer rubrum</i> 'October Glory'	October Glory Red Maple	2-2 1/2" Cal., B&B, Single Straight Trunk, Single Leader, Well Branched	1.2.1	As shown
6	EA	ASL	<i>Acer saccharum</i> 'Legacy'	Legacy Sugar Maple	2-2 1/2" Cal., B&B, Single Straight Trunk, Single Leader, Well Branched	1.2.1	As shown
17	EA	NS	<i>Nyssa sylvatica</i>	Black Gum	2-2 1/2" Cal., B&B, Single Straight Trunk, Single Leader, Well Branched	1.2.1	As shown
3	EA	QA	<i>Quercus alba</i>	White Oak	2-2 1/2" Cal., B&B, Single Straight Trunk, Single Leader, Well Branched	1.2.1	As shown
2	EA	QB	<i>Quercus bicolor</i>	Swamp White Oak	2-2 1/2" Cal., B&B, Single Straight Trunk, Single Leader, Well Branched	1.2.1	As shown
29	EA	QM	<i>Quercus macrocarpa</i>	Burr Oak	2-2 1/2" Cal., B&B, Single Straight Trunk, Single Leader, Well Branched, Matched Specimens	1.2.1	To be field staked
115	EA	QN	<i>Quercus nuttallii</i>	Nuttall Oak	2-2 1/2" Cal., B&B, Single Straight Trunk, Single Leader, Well Branched, Matched Specimens	1.2.1	As shown on 40' grid
61	EA	TD	<i>Taxodium distichum</i>	Bald Cypress	2 1/2-3" Cal., 10' Min. Ht., B&B, Single Straight Trunk, Single Leader, Well Branched, Matched Specimens	1.2.1	As shown
Shrubs							
433	EA	ARC	<i>Abelia x 'Rose Creek'</i>	Rose Creek Abelia	18-24", #3 Cont.	3.2.6	4' OC
717	EA	EA	<i>Euonymus alatus 'Compactus'</i>	Dwarf Burning Bush	21" Min., #3 Cont.	2.2.4	5' OC
6	EA	IMN	<i>Ilex x 'Mary Nell'</i>	Mary Nell Holly	5-6", B&B, Heavy, Branched to ground	3.2.6	As shown
179	EA	LCD	<i>Loropetalum chinense</i> 'Daruma'	Daruma Chinese Loropetalum	18-24", #3 Cont.	3.2.6	5' OC
278	EA	RR	<i>Rosa 'Radcon' PP#15070</i>	The Pink Knockout Rose	18-24", #3 Cont.	3.2.6	5' OC
156	EA	TO	<i>Thuja occidentalis 'Smaragd'</i>	Emerald Arborvitae	6" Min., #10 Cont., Straight, Heavily Branched, Matched Specimens	3.2.6	As shown on grid
Grasses							
6,197	EA	BC	<i>Bouteloua curtipendula</i>	Side Oats Grama	2 1/4" Pot, Tray of 32, Must be fully rooted into this container with full top growth and weed free	12.1.3	2' OC
1,473	EA	MC	<i>Muhlenbergia capillaris</i>	Pink Muhly Grass	3 1/2 to 4" Pot, Tray of 18, Must be fully rooted into this container with full top growth and weed free	12.1.3	3' OC
208	EA	PVHM	<i>Panicum virgatum 'Heavy Metal'</i>	Heavy Metal Switchgrass	3 1/2 to 4" Pot, Tray of 18, Must be fully rooted into this container with full top growth and weed free	12.1.3	4' OC
245	EA	PVN	<i>Panicum virgatum 'Northwind'</i>	Northwind Switchgrass	3 1/2 to 4" Pot, Tray of 18, Must be fully rooted into this container with full top growth and weed free	12.1.3	5' OC
2,056	EA	PVS	<i>Panicum virgatum 'Shenandoah'</i>	Shenandoah Switchgrass	3 1/2 to 4" Pot, Tray of 18, Must be fully rooted into this container with full top growth and weed free	12.1.3	3' OC
7,551	EA	STB	<i>Schizachyrium scoparium 'The Blues'</i>	The Blues Little Bluestem	3 1/2 to 4" Pot, Tray of 18, Must be fully rooted into this container with full top growth and weed free	12.1.3	2' OC

Other Items		
Quan.	Unit	Description
2	EA	Selective Tree Removal, 6"
1	EA	Selective Tree Removal, 10"
4	EA	Selective Tree Removal, 15"
9	EA	Selective Tree Removal, 18"
2.6	Acre	Selective Undergrowth Removal
2.15	Acre	Special Vegetation Removal
8.8	Acre	Seeding and Mulching (Natural Areas)
0.1	Acre	Seeding and Mulching (Turfgrass Areas)
525	Pound	Seed for Supplemental Seeding (Turfgrass Areas)
0.7	Ton	Fertilizer Topdressing (Turfgrass Areas)
7.5	Acre	Mowing
72,831	SY	Post-Emergence Herbicidal Treatment for Plant Beds
27,187	SY	Pre-Emergence Herbicidal Treatment for Plant Beds
3,985	CY	Mulch for Planting
97	Ton	Creek Stone
1	LS	Removal of Existing Plantings (Not within Plant Beds)

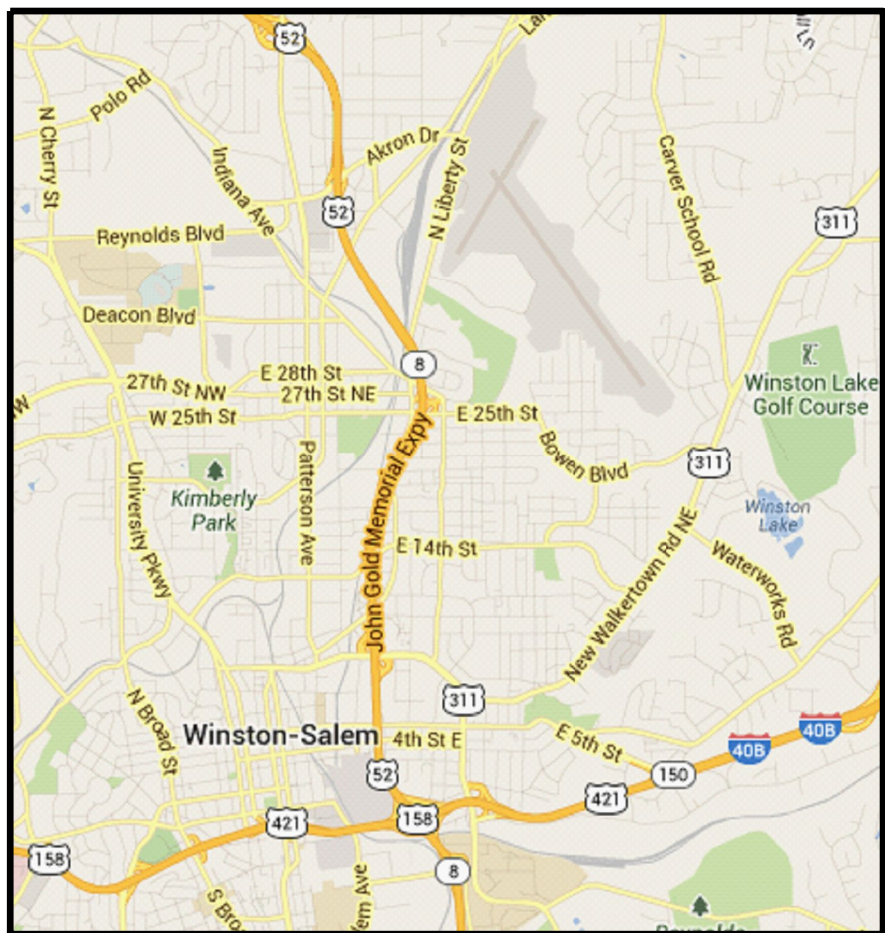


Project Location

Notes

- a SELECTIVE UNDERGROWTH REMOVAL: SELECTIVE UNDERGROWTH REMOVAL ACREAGE IS AN ESTIMATE ONLY; EXACT AREA TO BE IDENTIFIED BY THE ENGINEER IN THE FIELD.
- b SUPPLEMENTAL SEEDING AND TOPDRESSING: MOWED TURF AREAS LOCATED TO THE INSIDE OF THE RAMPS AND BETWEEN THE EDGE OF PAVEMENT AND THE NATURAL AREAS AND/OR PLANT BEDS, SHALL RECEIVE TOPDRESSING AND SUPPLEMENTAL SEEDING.
- B SPECIAL VEGETATION REMOVAL: INCLUDES, BUT IS NOT LIMITED TO, REMOVAL OF UNDERGROWTH, CLEAN UP AND REMOVAL OF TRASH AND DOWNED LIMBS, PRUNING TO LIFT CANOPY TO EIGHT FOOT CLEARANCE, REMOVE DEAD AND DAMAGED LIMBS, PERFORM WEED CONTROL, APPLYING POST AND PRE-EMERGENT HERBICIDES AS DIRECTED BY THE ENGINEER IN THE FIELD. SEE SPECIAL PROVISION.
- I NATURAL AREA SEEDING: PROPOSED AREAS TO BE SEEDED ARE SHOWN ON THE PLANS; ACREAGE IS AN ESTIMATE ONLY. EXACT AREAS SHALL BE STAKED AND APPROVED BY THE ENGINEER IN THE FIELD PRIOR TO BEGINNING WORK. THESE AREAS SHALL REQUIRE A TOTAL KILL OF EXISTING GROUND COVER PRIOR TO PREPARING SEED BED. EROSION CONTROL DEVICES, IF REQUIRED SHALL BE DETERMINED IN THE FIELD AND SHALL BE INSTALLED PRIOR TO ANY SOIL DISTURBANCE.
- C SELECTIVE TREE REMOVAL: REMOVE ALL CRABAPPLES AND WHITE PINES WITHIN AREAS TO BE PLANTED (INTERCHANGES) UNLESS OTHERWISE DIRECTED BY THE ENGINEER IN THE FIELD. ADDITIONAL TREES TO BE REMOVED ARE AS SHOWN OR NOTED ON THE PLANS, AND AS DIRECTED BY THE ENGINEER IN THE FIELD.
- J EXISTING POOR TURF STAND RENOVATION TO NATIVE GRASS - NO TILL / NO MULCH INSTALLATION: CONDUCT RENOVATION PROCESS DURING ACTIVE GROWING SEASON. CUT EXISTING VEGETATION TO AN APPROXIMATE THREE INCH HEIGHT WITH LINE TRIMMER. DO NOT 'SCALP' GROUND. ALLOW VEGETATION TO RECOVER AND REGROW FOR APPROXIMATELY SEVEN DAYS. SPRAY WITH POST-EMERGENCE HERBICIDE TO ACHIEVE TOTAL KILL. REPEAT IF NEEDED. (MUST HAVE TOTAL KILL OF EXISTING VEGETATION PRIOR TO INSTALLATION OF NATIVE GRASSES.) INSTALL NATIVE GRASS PLUGS. DO NOT MULCH. WATER AS NEEDED AND AS DIRECTED BY THE ENGINEER IN THE FIELD.
- D REMOVAL OF EXISTING PLANTINGS: REMOVE ALL EXISTING PLANTS AS SHOWN OR NOTED ON PLANS AND AS DIRECTED BY THE ENGINEER IN THE FIELD. FILL ANY DEPRESSIONS OR HOLES CREATED WITH TOPSOIL. GRADE AREA TO DRAIN AND SEED WITH APPROPRIATE SPECIES AS DIRECTED BY THE ENGINEER IN THE FIELD. LEAVE AREAS IN A SMOOTH AND MOWABLE CONDITION.
- K DRAINAGE SWALE RENOVATION: INSTALL APPROPRIATE EROSION CONTROL DEVICES AS DIRECTED BY THE ENGINEER IN THE FIELD PRIOR TO ANY SOIL DISTURBING ACTIVITIES. REMOVE EXISTING SEDIMENT BUILD UP AND RIP-RAP WITHIN THE SWALES. GRADE SWALES FOR POSITIVE DRAINAGE. LINE SWALES WITH CREEK STONE.
- E SELECTIVE TREE REMOVAL: REMOVE ALL TREES TO THE INSIDE OF THE RAMPS UNLESS LABELED AS 'RETAIN EX' (EXISTING) ON THE PLAN OR DIRECTED BY THE ENGINEER IN THE FIELD TO RETAIN.
- L CREEK STONE: INSTALL APPROPRIATE EROSION CONTROL DEVICES AS DIRECTED BY THE ENGINEER IN THE FIELD PRIOR TO ANY SOIL DISTURBING ACTIVITIES. RE-GRADE AND LINE EXISTING SWALE OR CREATE SWALE AND LINE WITH CREEK STONE AS INDICATED ON THE PLANS AND AS DIRECTED BY THE ENGINEER IN THE FIELD. SEE SPECIAL PROVISIONS.
- M LOCATION OF 15 REDBUD (CC) AND 15 DOGWOOD (CK) TO BE STAKED IN THE FIELD BY THE ENGINEER.
- F PROPOSED NEW PLANT BEDS AND RENOVATED PLANT BEDS: PLANT BEDS ARE INDICATED AND LABELED ON THE PLANS. STAKE PLANT BED PERIMETERS FOR APPROVAL BY THE ENGINEER PRIOR TO BEGINNING WORK. INSTALL EROSION CONTROL DEVICES AS DIRECTED BY THE ENGINEER IN THE FIELD IF NEEDED. EXISTING PLANTS TO BE RETAINED, IF ANY, WILL BE IDENTIFIED ON THE PLANS OR BY THE ENGINEER IN THE FIELD. APPLY POST-EMERGENCE HERBICIDE AND REPEAT AS NECESSARY TO ACHIEVE A TOTAL KILL OF UNDESIRABLE VEGETATION. TAKE CARE NOT TO DAMAGE EXISTING VEGETATION TO BE RETAINED. REMOVE DEAD VEGETATIVE LAYER, TILL, AND RAKE TO SMOOTH AND LEVEL PLANT BED. IF TILLING IN THE VICINITY OF EXISTING TREES TO BE RETAINED, DO NOT ENCROACH INTO AREA BENEATH DRIPLINE. TO PREVENT PROBLEMS FROM SHREDDING OF ROOTS, SMOOTHLY CUT ANY ROOTS ONE INCH OR GREATER THAT EXTEND BEYOND THE DRIP LINE INTO TILLED AREA. PLANT AS SHOWN ON PLANS AND MULCH ENTIRE AREA.
- G PLANT BED RENOVATION: DO NOT TREAT AND/OR PREPARE BED BETWEEN AND AROUND EXISTING TREES TO BE RETAINED. (REDBUD AND CRAPE MYRTLES LABELED 'EX' ON PLANS.) REMOVE ALL OTHER EXISTING VEGETATION. FILL HOLES WITH TOPSOIL. PLANT NEW TREES AND MULCH. DO TREAT AND PREPARE AS NORMAL THE REMAINDER OF PLANT BED AT EXIT RAMP NOSE AND ON THE SLOPE ALONG NORTH LIBERTY STREET.

Vicinity Map



CONVENTIONAL SYMBOLS

County Line.....	-----
City or Town Line.....	-----
Exist. Right of Way Line Marker.....	-----△-----
Prop. Right of Way Line Marker (By Others).....	-----▲-----
Prop Right of Way Line Marker (By Contract).....	-----▲-----
Exist. Control of Access Line.....	-----○-----
Prop. Control of Access Line.....	-----○-----
Property Line.....	-----E-----
Easement Line.....	-----E-----
Slope Stake Line.....	-----+-----
Exist. Fence.....	-----+-----
Prop. Woven Wire Fence.....	-----○-----
Prop. Chain Link Fence.....	-----□-----
Exist. Road.....	=====
Prop. Road.....	=====
Guardrail.....	-----+-----
Survey Line.....	-----+-----
Denotes Line Equality.....	-----○-----
Bridge.....	=====
Culvert.....	=====
Railroad.....	-----+-----
Woods.....	=====
Exist. Telephone Pole.....	-----○-----
Prop. Telephone Pole.....	-----○-----
Tower Pole and Line.....	-----○-----
Exist. Power Pole.....	-----○-----
Prop. Power Pole.....	-----○-----
Sanitary Sewer Line.....	-----SS-----
Water Line.....	-----+-----
Gas Line.....	-----GAS-----
Picnic Shelter.....	=====
Regeneration.....	=====
Reforestation.....	=====

INDEX OF L SHEETS:

- 1.....TITLE, DESCRIPTION, NOTES AND SUMMARY OF QUANTITIES
- 2.....PLANTING DETAILS
- 3-15...LANDSCAPE PLANS

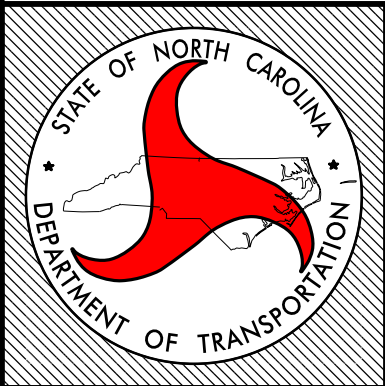
PREPARED BY: CSM

PRELIMINARY DESIGN DATE: JUNE 4, 2013

REVISION DATE:

FINAL DESIGN DATE: JULY 5, 2013

US 52 - WINSTON SALEM



STATE OF
NORTH CAROLINA
DEPARTMENT OF TRANSPORTATION

LOCATION: US 52 FROM I-40 BUSINESS TO AKRON DRIVE (SR 2264) IN WINSTON SALEM

TYPE OF WORK: LANDSCAPE PLANTING

COUNTY: FORSYTH COUNTY

DIVISION: 9
ADDRESS: 375 Silas Creek Parkway, Winston Salem, NC 27127

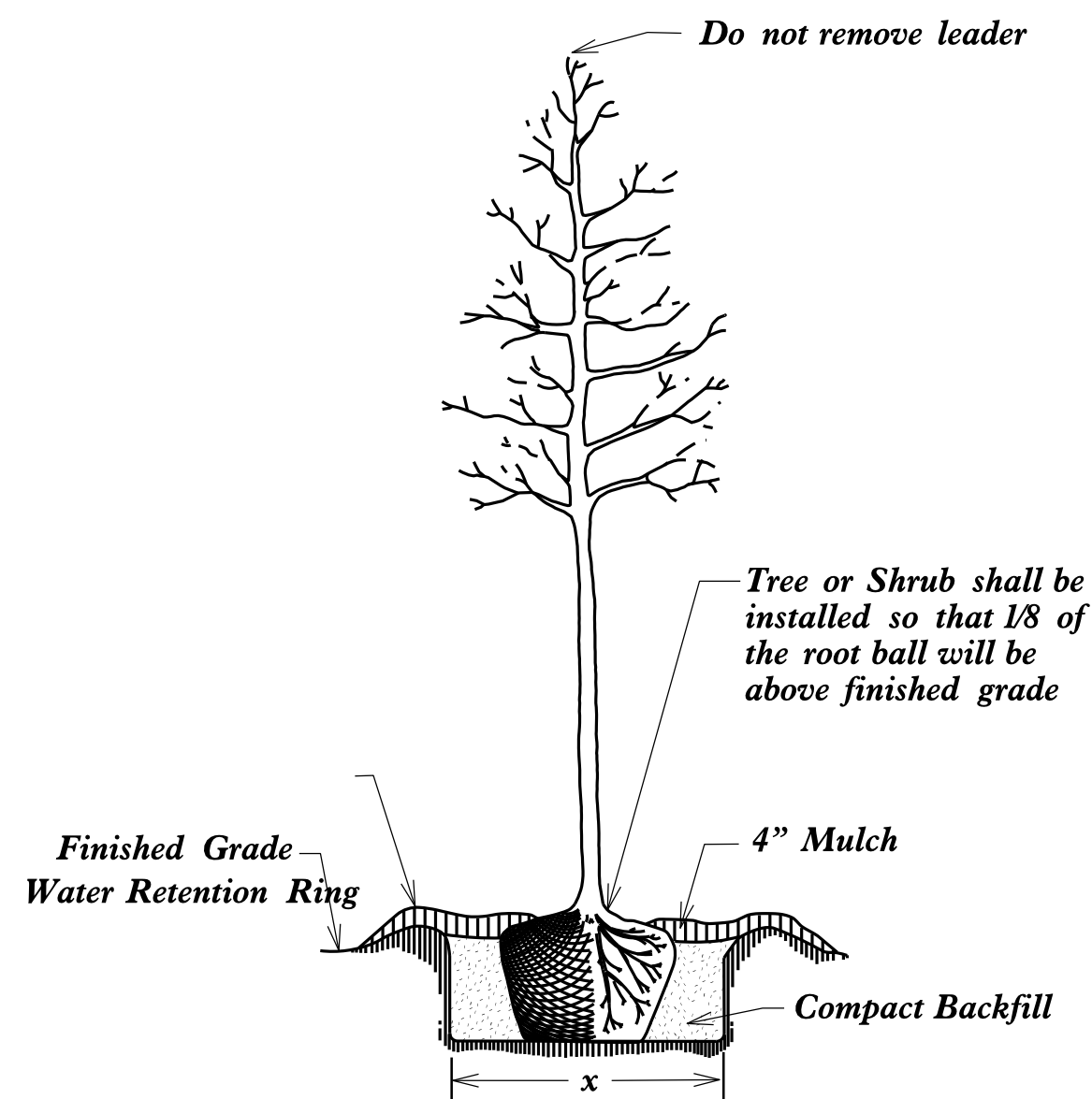
DIV. ENG.: PAT IVEY, PE

DIV. ROADSIDE DEPT. ENG.: TODD HIATT

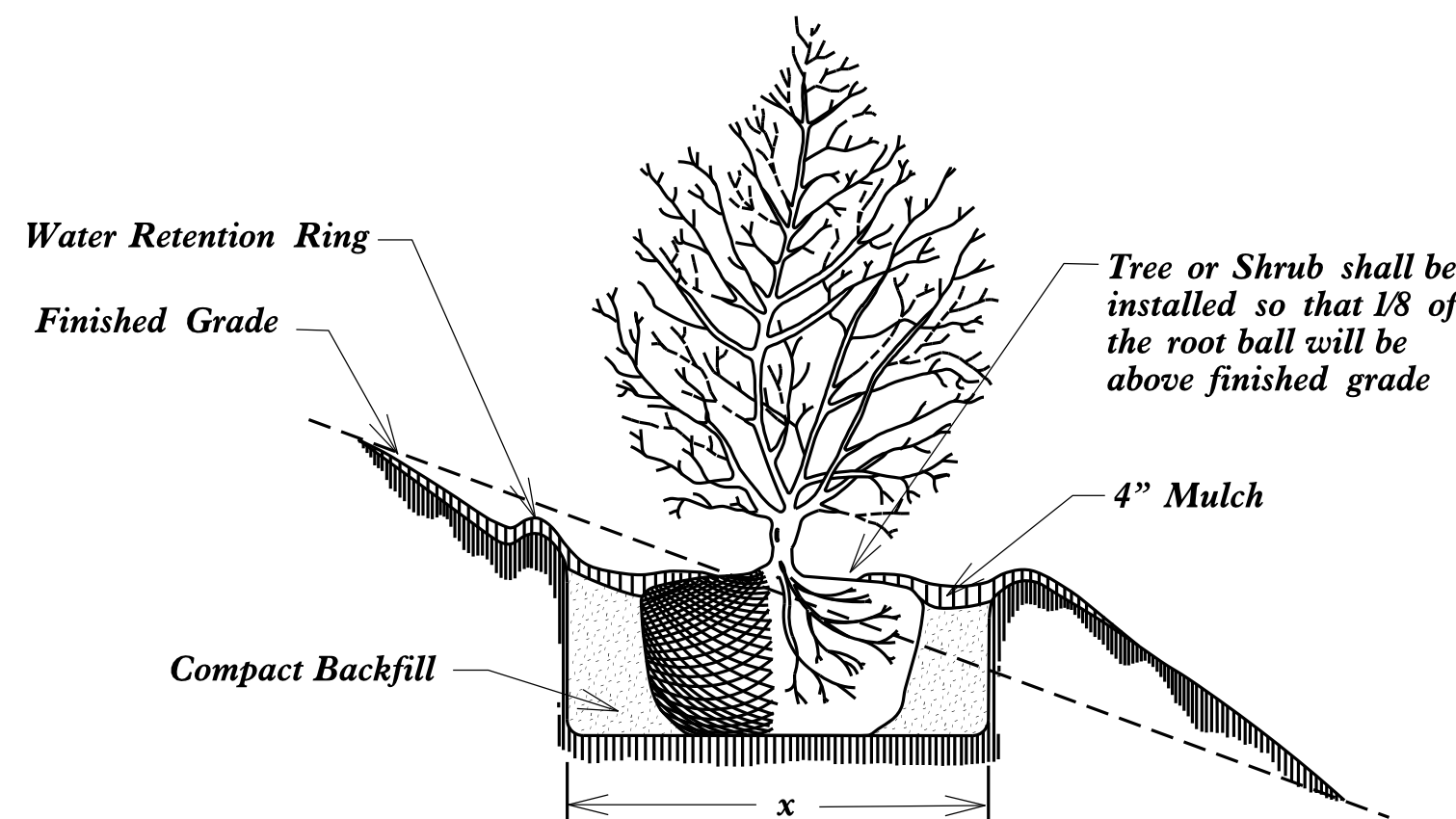
2004 American Standard for Nursery Stock

2012 NCDOT STANDARD SPECIFICATIONS

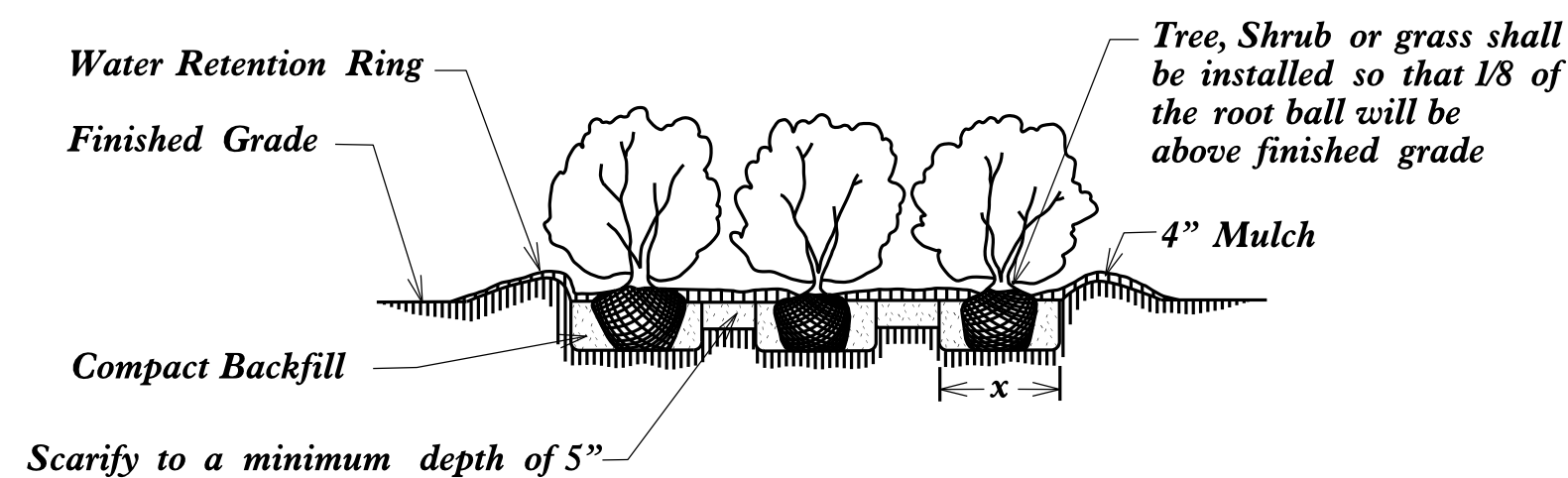
PREPARED IN THE OFFICE OF:
NCDOT- ROADSIDE ENVIRONMENTAL UNIT
LANDSCAPE DESIGN & DEVELOPMENT SECTION
1557 MAIL SERVICE CENTER
RALEIGH NC 27699 919-707-2920



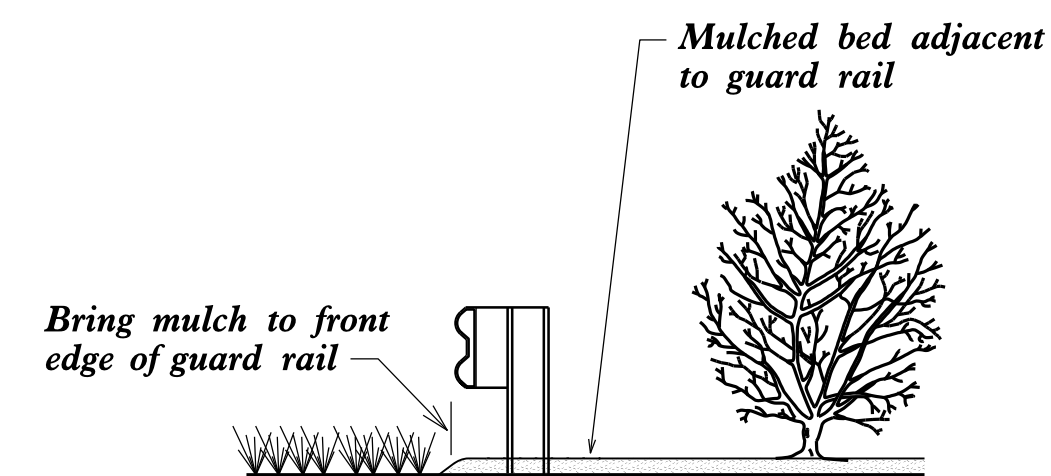
Tree or Shrub Planting Detail
(Level Ground)



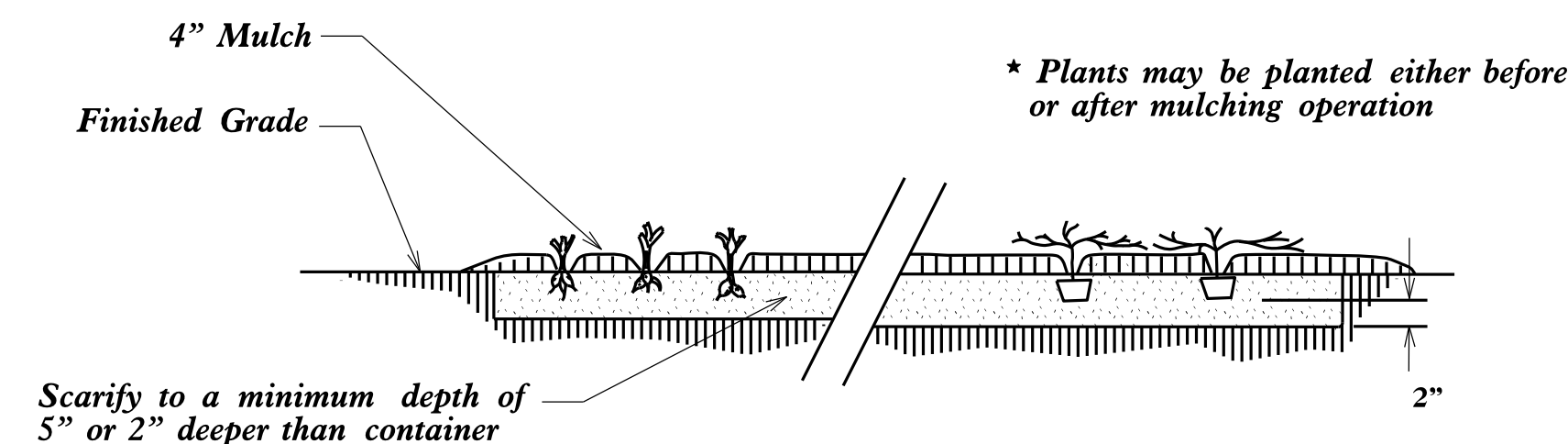
Tree or Shrub Planting Detail
(Sloping Ground)



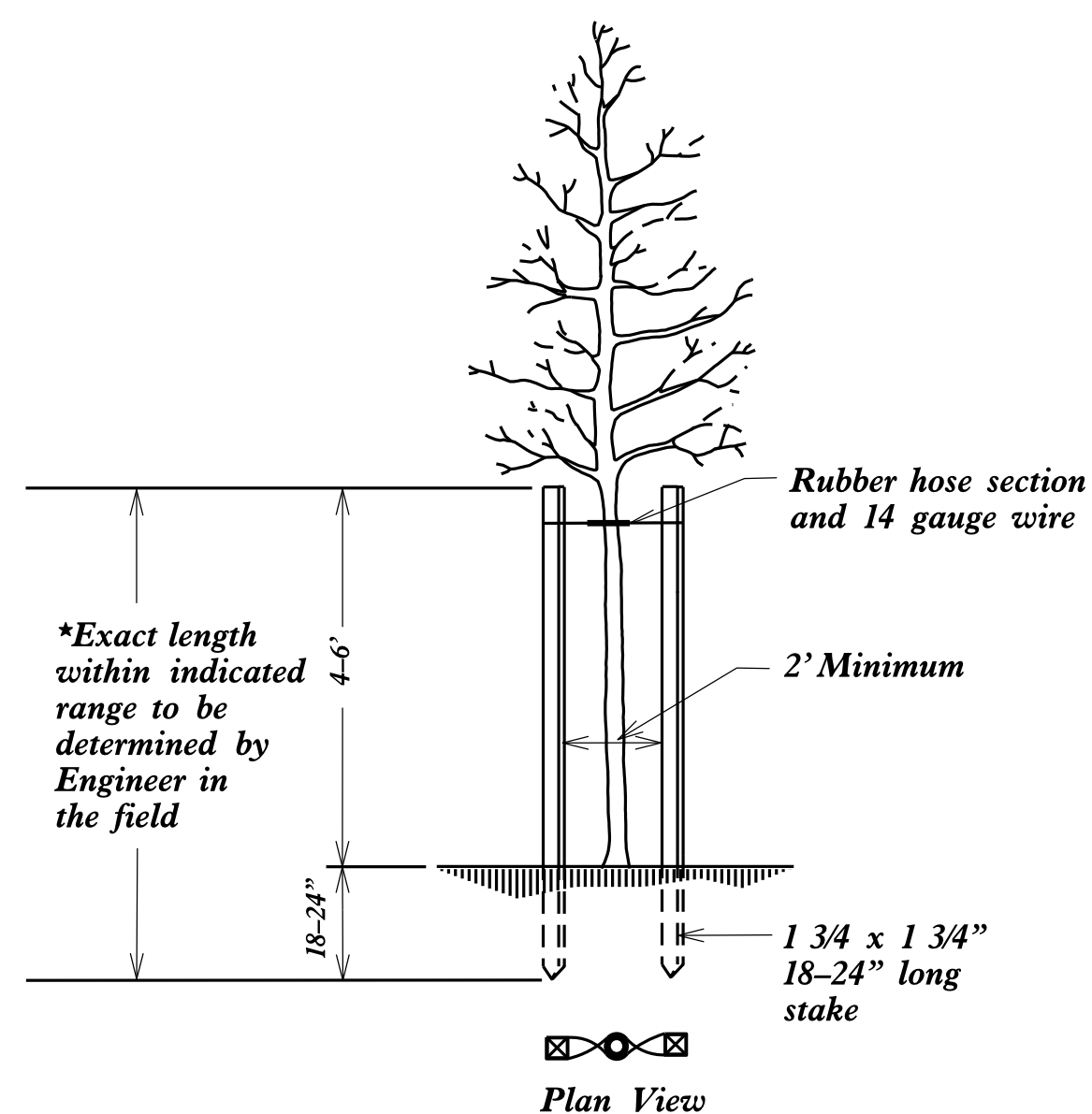
Bed Planting Detail



Plant Bed /Guard Rail Detail

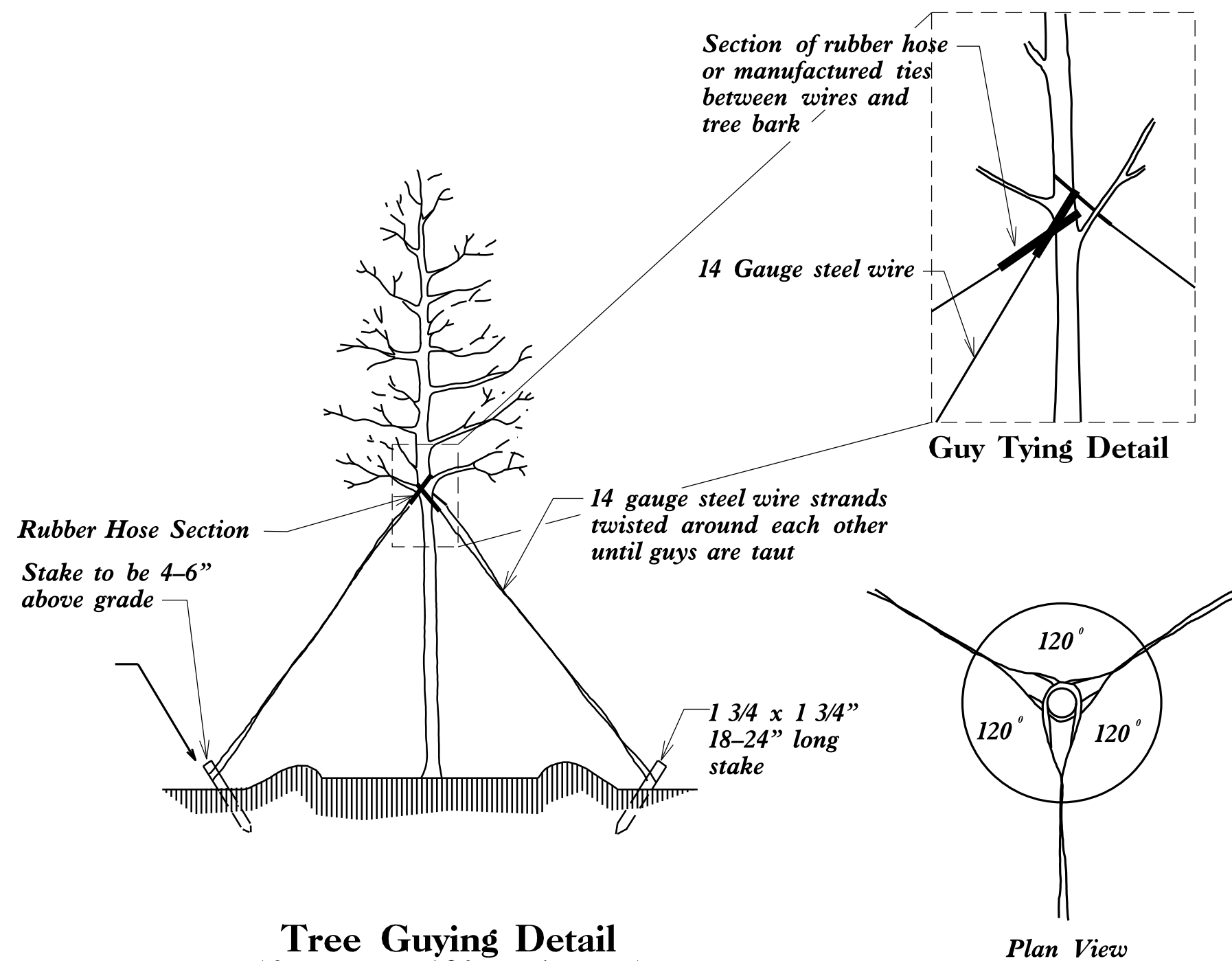


Ground Cover Planting Detail



Staking Detail
(for trees 6' to 10')

* Utilize staking detail only if requested by the Engineer.



Tree Guying Detail
(for trees 10' or larger)

* Utilize guying detail only if requested by the Engineer.

Notes:

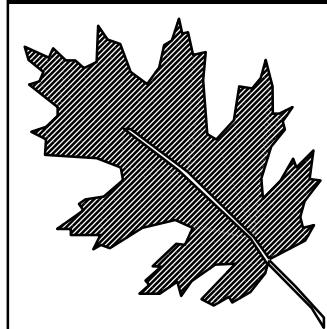
Schedule for Plant Hole Size:
X = 2 times the diameter of the container or the root ball diameter

Staking and guying shall be at the direction of the engineer in the field.

Fertilizer shall be applied at time of planting. Fertilizer shall be a slow release pellet or tablet. Formulation shall be approved by the engineer in the field. Rates shall be per manufacturer's recommendations and approved by the engineer in the field. Thoroughly mix with topsoil, backfill or scarified soil.

When mulched bed is adjacent to guard rail run mulch to front edge of guard rail - see detail

Before backfilling, cut and remove wire basket and remove burlap around top of root ball to expose root collar. Depending on type of soil at installation site, set root ball at grade or slightly above as directed by the Engineer. Do not place mulch against root collar. Do not place mulch within 12" of tree trunk or 6" of shrub trunk.



NCDOT - ROADSIDE ENVIRONMENTAL UNIT
LANDSCAPE DESIGN & DEVELOPMENT
1557 MAIL SERVICE CENTER RALEIGH NC 27699-1557
PH: 919-707-2920 FAX: 919-715-2554
http://www.ncdot.org/doh/operations/dp_chief_eng/roadside/

U-2826 A AND B;
US 52 FROM I-40 BUSINESS
TO SR 2264 (AKRON DRIVE) IN
WINSTON SALEM

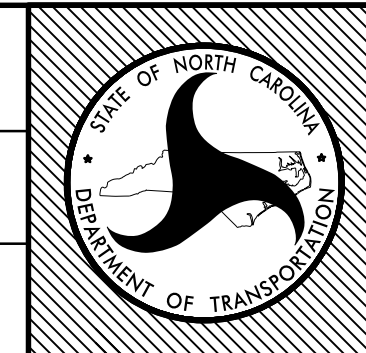
Connie Morgan
REU ENGINEER

SHEET DESCRIPTION:

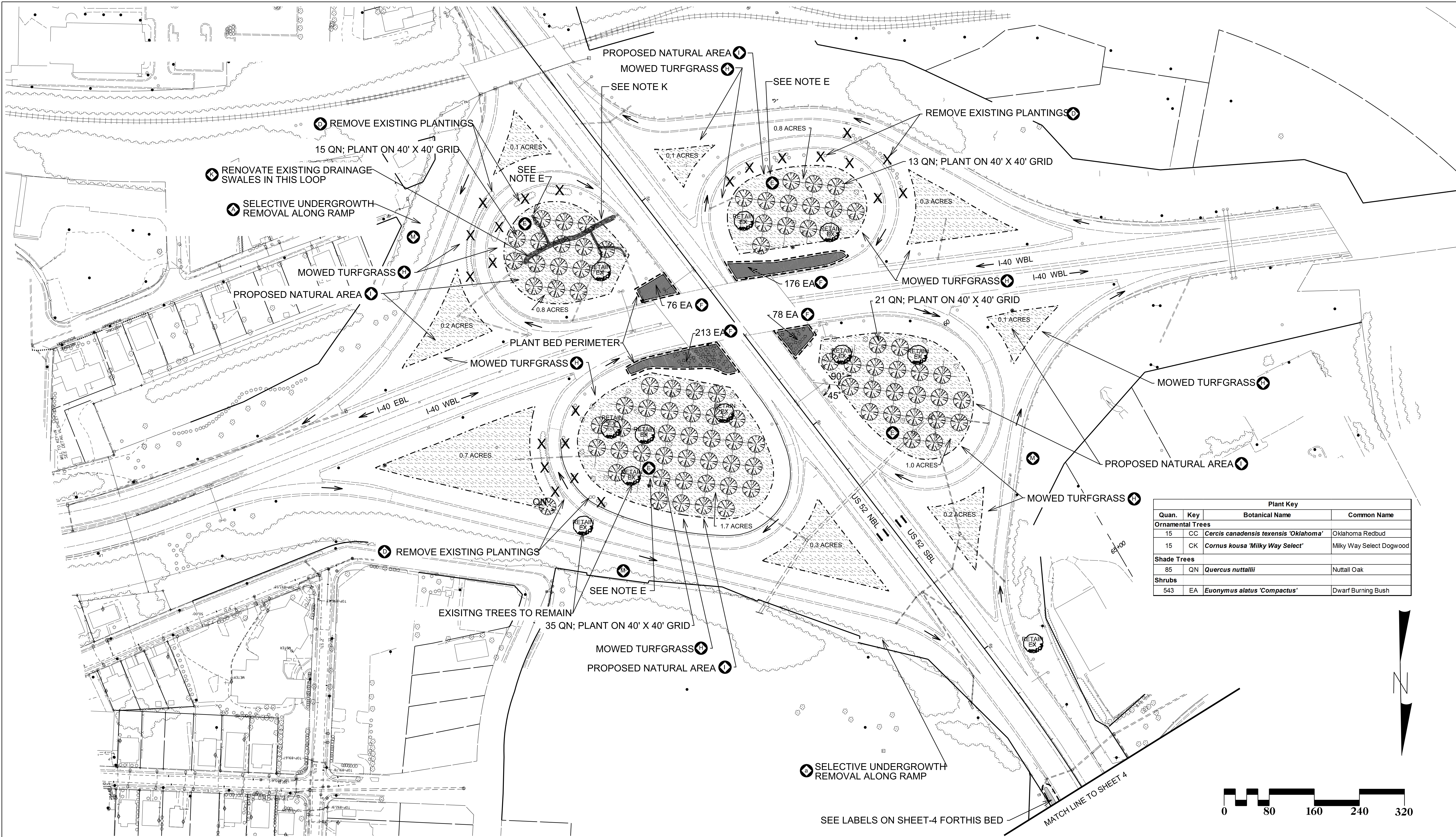
LANDSCAPE DEVELOPMENT

Planting details

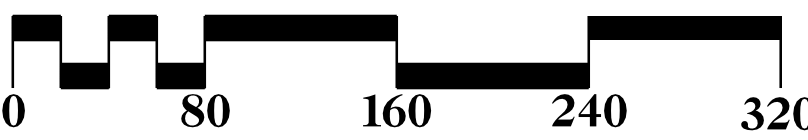
PRELIMINARY DESIGN DATE : JUNE 4, 2013 FINAL DESIGN DATE : JULY 5, 2013
PROJECT: U-2826 US 52 - WINSTON SALEM
DIVISION AND COUNTY: DIVISION 9 - FORSYTH COUNTY

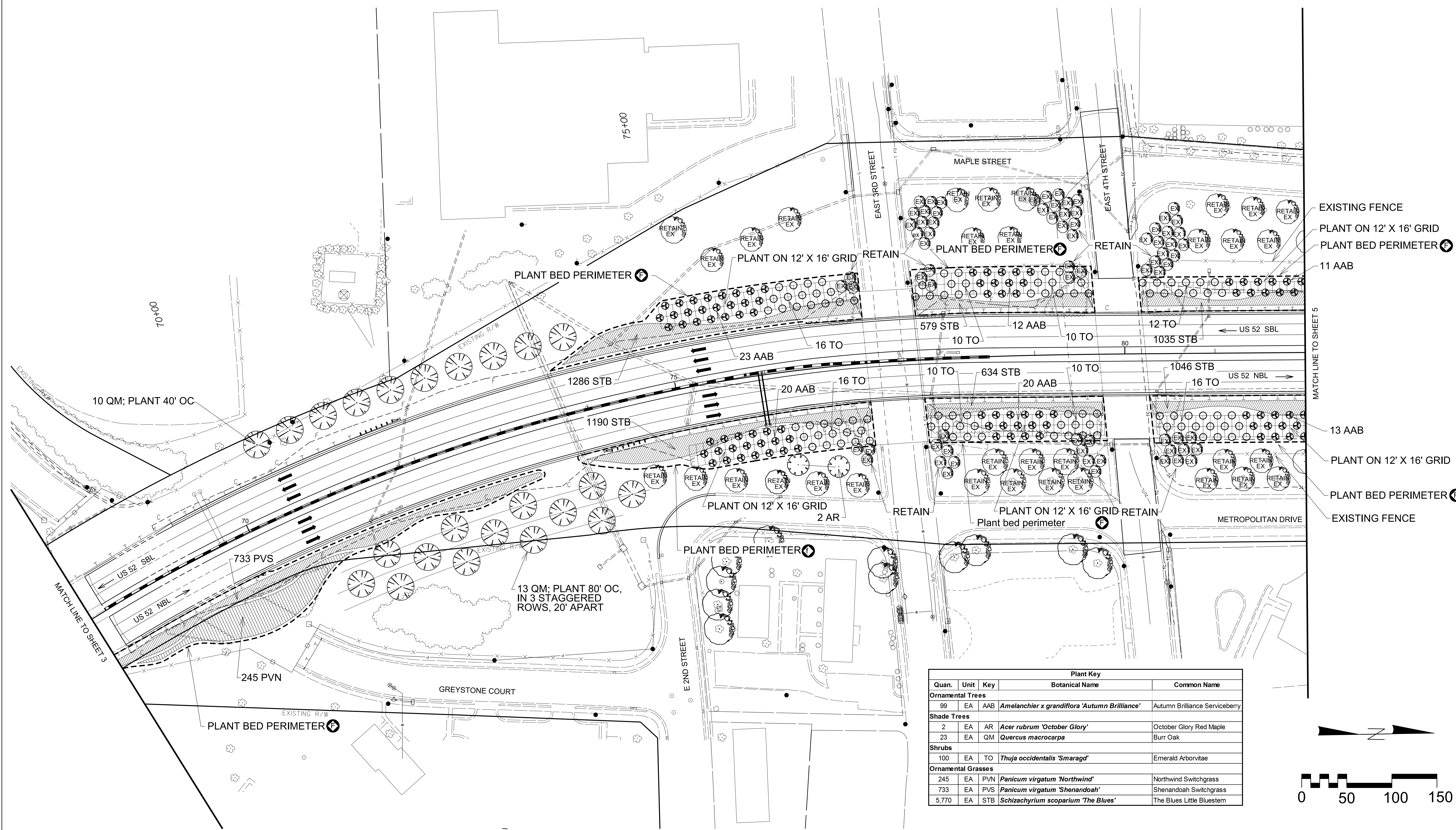


SHEET NO : 2
TOTAL SHEET NO : 15

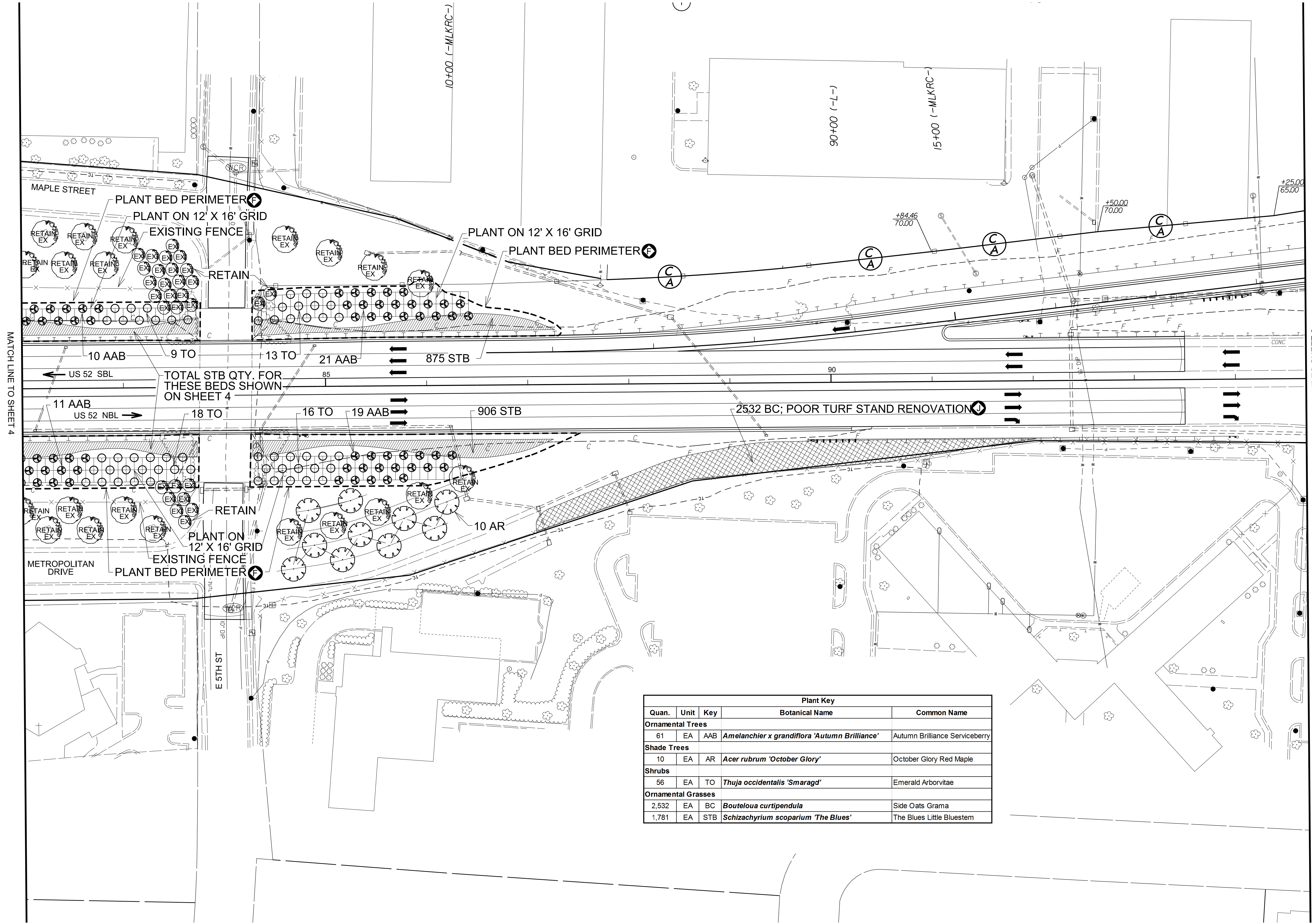


Plant Key			
Quan.	Key	Botanical Name	Common Name
Ornamental Trees			
15	CC	<i>Cercis canadensis texensis</i> 'Oklahoma'	Oklahoma Redbud
15	CK	<i>Cornus kousa</i> 'Milky Way Select'	Milky Way Select Dogwood
Shade Trees			
85	QN	<i>Quercus nuttallii</i>	Nuttall Oak
Shrubs			
543	EA	<i>Euonymus alatus</i> 'Compactus'	Dwarf Burning Bush

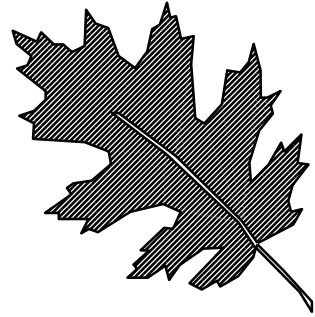
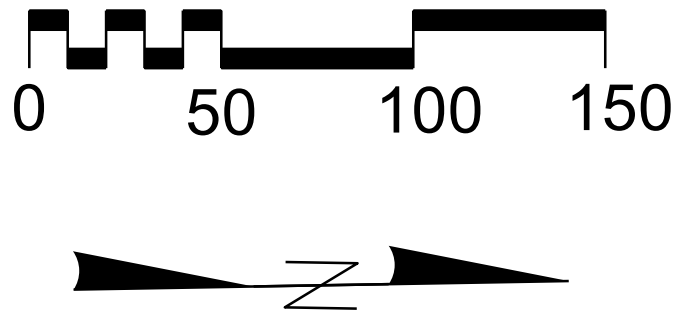




Plant Key				
Quan.	Unit	Key	Botanical Name	Common Name
Ornamental Trees				
99	EA	AAB	<i>Amelanchier x grandiflora</i> 'Autumn Brilliance'	Autumn Brilliance Serviceberry
Shade Trees				
2	EA	AR	<i>Acer rubrum</i> 'October Glory'	October Glory Red Maple
23	EA	QM	<i>Quercus macrocarpa</i>	Burr Oak
Shrubs				
100	EA	TO	<i>Thuja occidentalis</i> 'Smaragd'	Emerald Arborvitae
Ornamental Grasses				
245	EA	PVN	<i>Panicum virgatum</i> 'Northwind'	Northwind Switchgrass
733	EA	PVS	<i>Panicum virgatum</i> 'Shenandoah'	Shenandoah Switchgrass
5,770	EA	STB	<i>Schizachyrium scoparium</i> 'The Blues'	The Blues Little Bluestem



Plant Key				
Quan.	Unit	Key	Botanical Name	Common Name
Ornamental Trees				
61	EA	AAB	<i>Amelanchier x grandiflora</i> 'Autumn Brilliance'	Autumn Brilliance Serviceberry
Shade Trees				
10	EA	AR	<i>Acer rubrum</i> 'October Glory'	October Glory Red Maple
Shrubs				
56	EA	TO	<i>Thuja occidentalis</i> 'Smaragd'	Emerald Arborvitae
Ornamental Grasses				
2,532	EA	BC	<i>Bouteloua curtipendula</i>	Side Oats Grama
1,781	EA	STB	<i>Schizachyrium scoparium</i> 'The Blues'	The Blues Little Bluestem



NCDOT - ROADSIDE ENVIRONMENTAL UNIT
LANDSCAPE DESIGN & DEVELOPMENT
1557 MAIL SERVICE CENTER RALEIGH NC 27699-1557
PH: 919-707-2920 FAX: 919-715-2554
http://www.ncdot.org/doh/operations/dp_chief_eng/roadside/

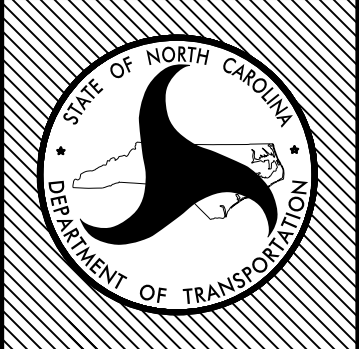
U-2826 A AND B;
US 52 FROM I-40 BUSINESS
TO SR 2264 (AKRON DRIVE) IN
WINSTON SALEM

Connie Morgan
REU ENGINEER

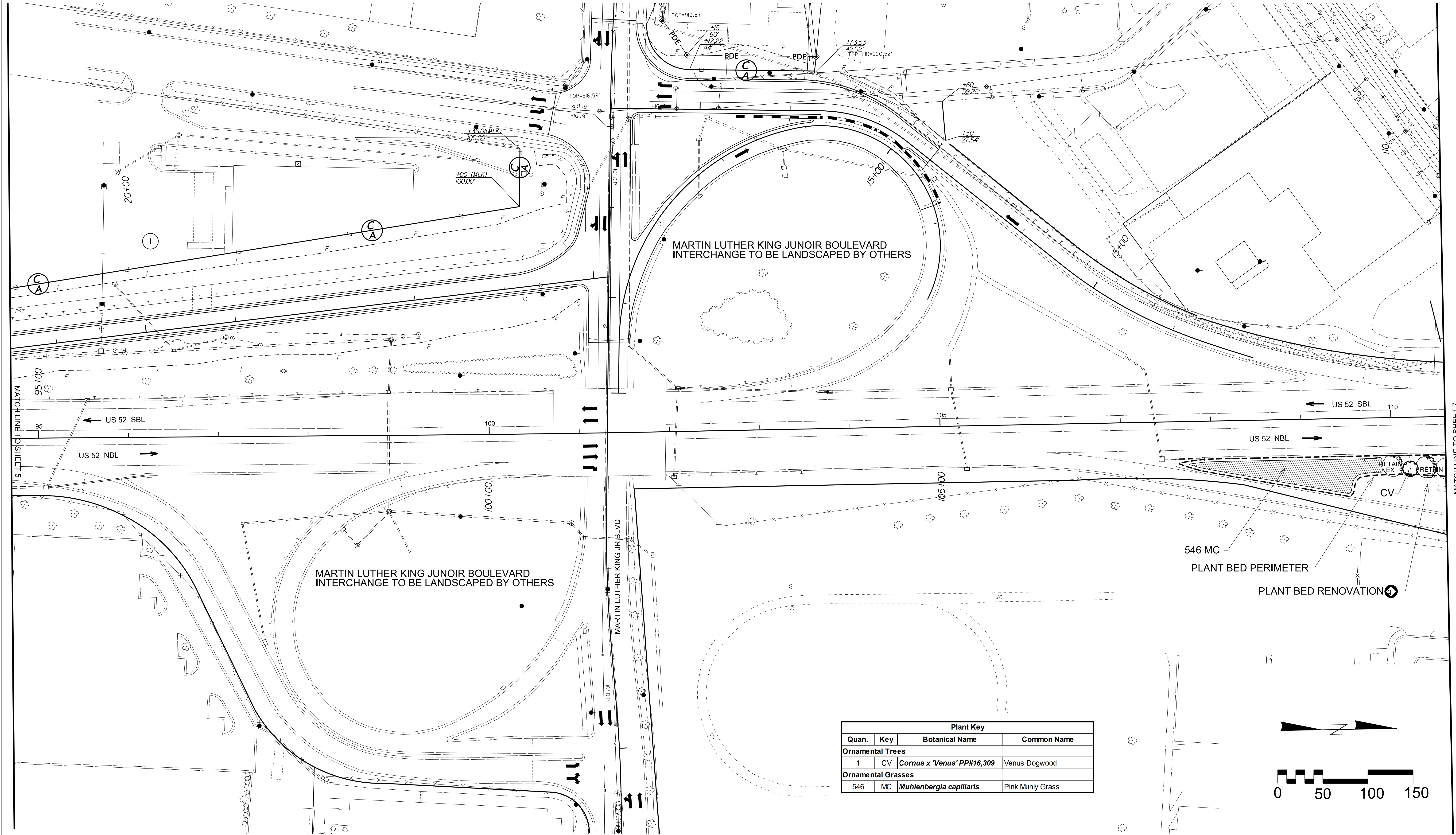
SHEET DESCRIPTION:

LANDSCAPE DEVELOPMENT
PLANTING PLAN

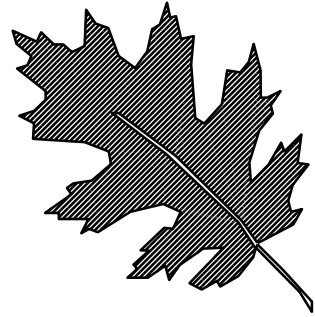
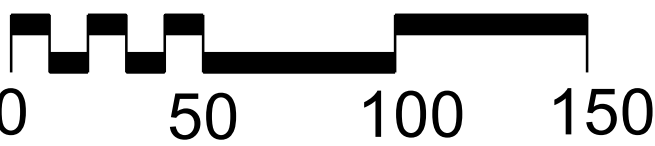
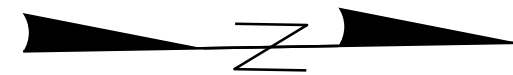
PRELIMINARY DESIGN DATE : JUNE 4, 2013 FINAL DESIGN DATE : JULY 5, 2013
PROJECT: U-2826
US 52 - WINSTON SALEM
DIVISION AND COUNTY:
DIVISION 9 - FORSYTH COUNTY



SHEET NO : 5
TOTAL SHEET NO : 15



Plant Key			
Quan.	Key	Botanical Name	Common Name
Ornamental Trees			
1	CV	<i>Cornus x 'Venus' PP#16,309</i>	Venus Dogwood
Ornamental Grasses			
546	MC	<i>Muhlenbergia capillaris</i>	Pink Muhly Grass



NCDOT - ROADSIDE ENVIRONMENTAL UNIT
LANDSCAPE DESIGN & DEVELOPMENT
1557 MAIL SERVICE CENTER RALEIGH NC 27699-1557
PH: 919-707-2920 FAX: 919-715-2554
http://www.ncdot.org/doh/operations/dp_chief_eng/roadside/

U-2826 A AND B;
US 52 FROM I-40 BUSINESS
TO SR 2264 (AKRON DRIVE) IN
WINSTON SALEM

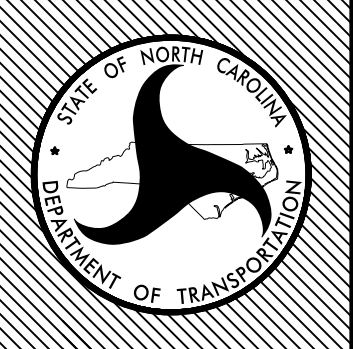
Connie Morgan
REU ENGINEER

SHEET DESCRIPTION:

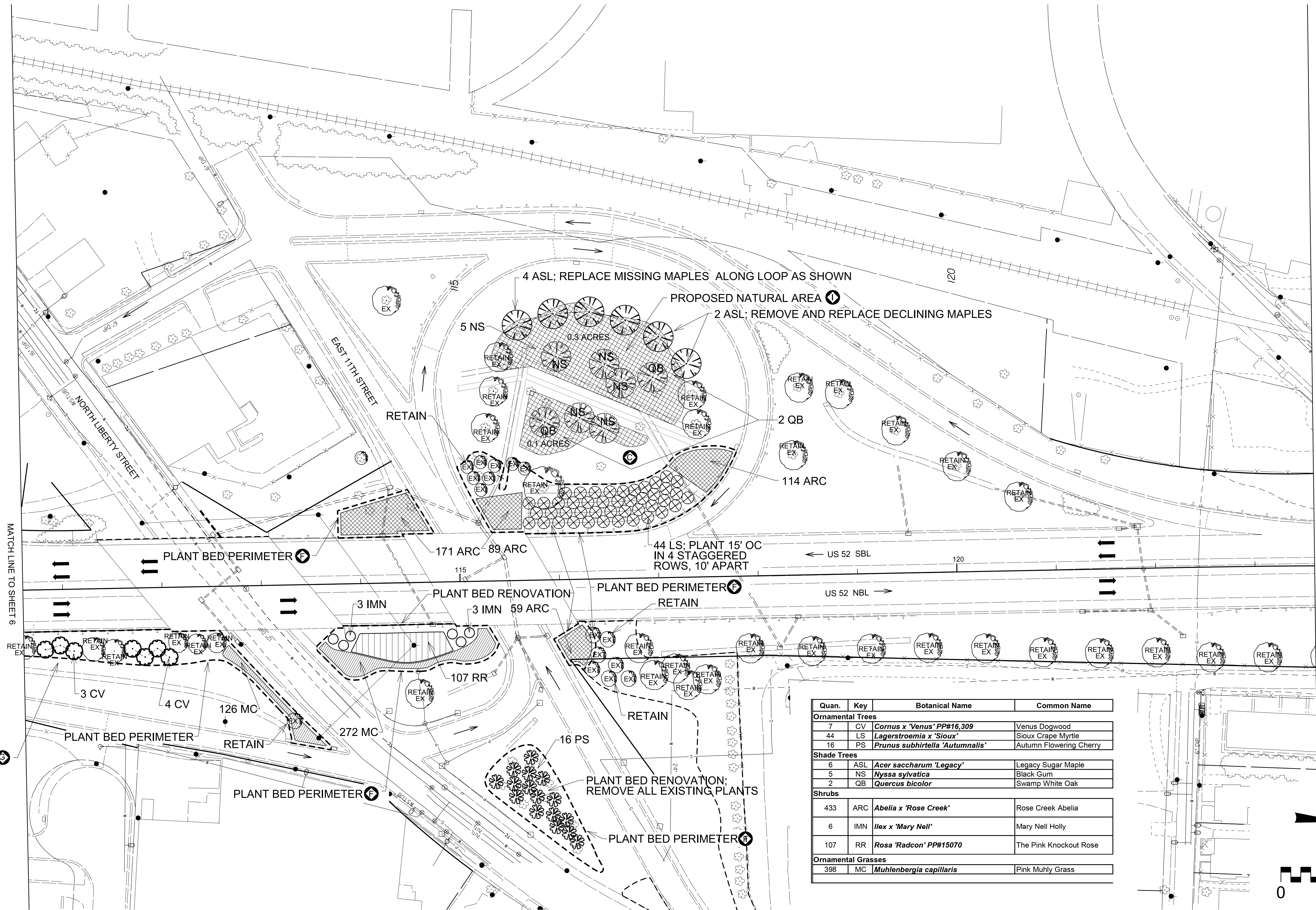
LANDSCAPE DEVELOPMENT

LANDSCAPE PLAN

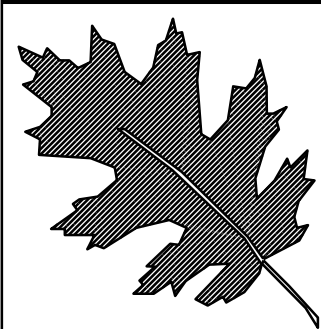
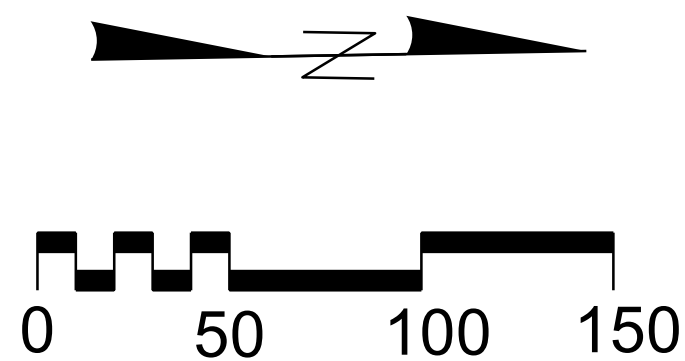
PRELIMINARY DESIGN DATE : JUNE 4, 2013 FINAL DESIGN DATE : JULY 5, 2013
PROJECT: U-2826
US 52 - WINSTON SALEM
DIVISION AND COUNTY:
DIVISION 9 - FORSYTH COUNTY



SHEET NO : 6
TOTAL SHEET NO : 15



Quan.	Key	Botanical Name	Common Name
Ornamental Trees			
7	CV	<i>Cornus x 'Venus' PP#16,309</i>	Venus Dogwood
44	LS	<i>Lagerstroemia x 'Sioux'</i>	Sioux Crape Myrtle
16	PS	<i>Prunus subhirtella 'Autumnalis'</i>	Autumn Flowering Cherry
Shade Trees			
6	ASL	<i>Acer saccharum 'Legacy'</i>	Legacy Sugar Maple
5	NS	<i>Nyssa sylvatica</i>	Black Gum
2	QB	<i>Quercus bicolor</i>	Swamp White Oak
Shrubs			
433	ARC	<i>Abelia x 'Rose Creek'</i>	Rose Creek Abelia
6	IMN	<i>Ilex x 'Mary Nell'</i>	Mary Nell Holly
107	RR	<i>Rosa 'Radcon' PP#15070</i>	The Pink Knockout Rose
Ornamental Grasses			
398	MC	<i>Muhlenbergia capillaris</i>	Pink Muhly Grass



NCDOT - ROADSIDE ENVIRONMENTAL UNIT
 LANDSCAPE DESIGN & DEVELOPMENT
 1557 MAIL SERVICE CENTER RALEIGH NC 27699-1557
 PH: 919-707-2920 FAX: 919-715-2554
http://www.ncdot.org/doh/operations/dp_chief_eng/roadside/

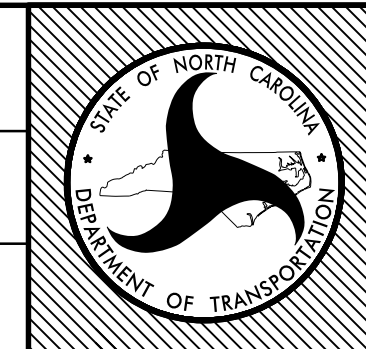
U-2826 A AND B;
 US 52 FROM I-40 BUSINESS
 TO SR 2264 (AKRON DRIVE) IN
 WINSTON SALEM

Connie Morgan
 REU ENGINEER

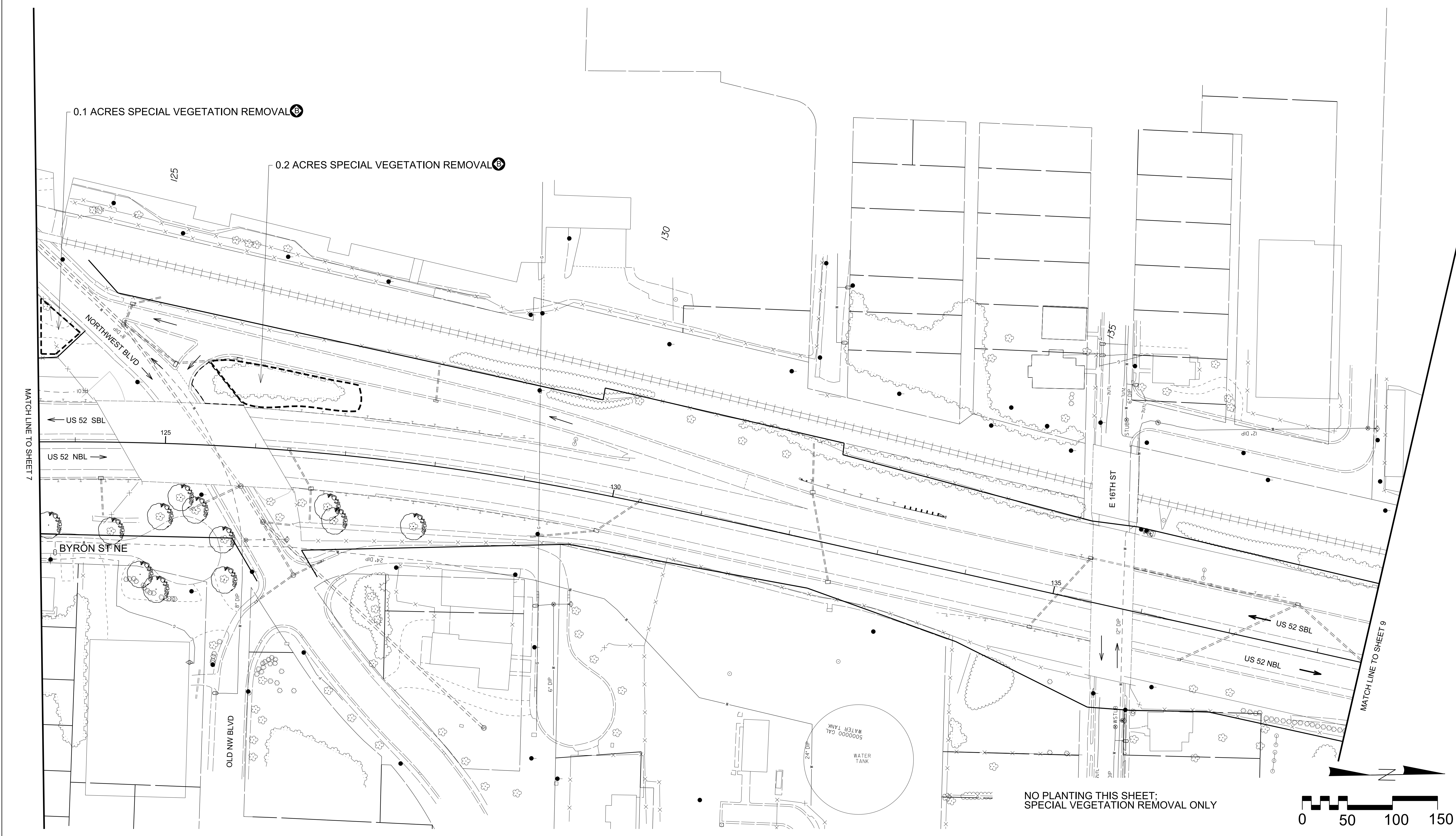
SHEET DESCRIPTION:

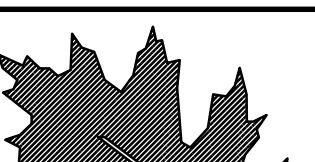


LANDSCAPE DEVELOPMENT
 LANDSCAPE PLAN

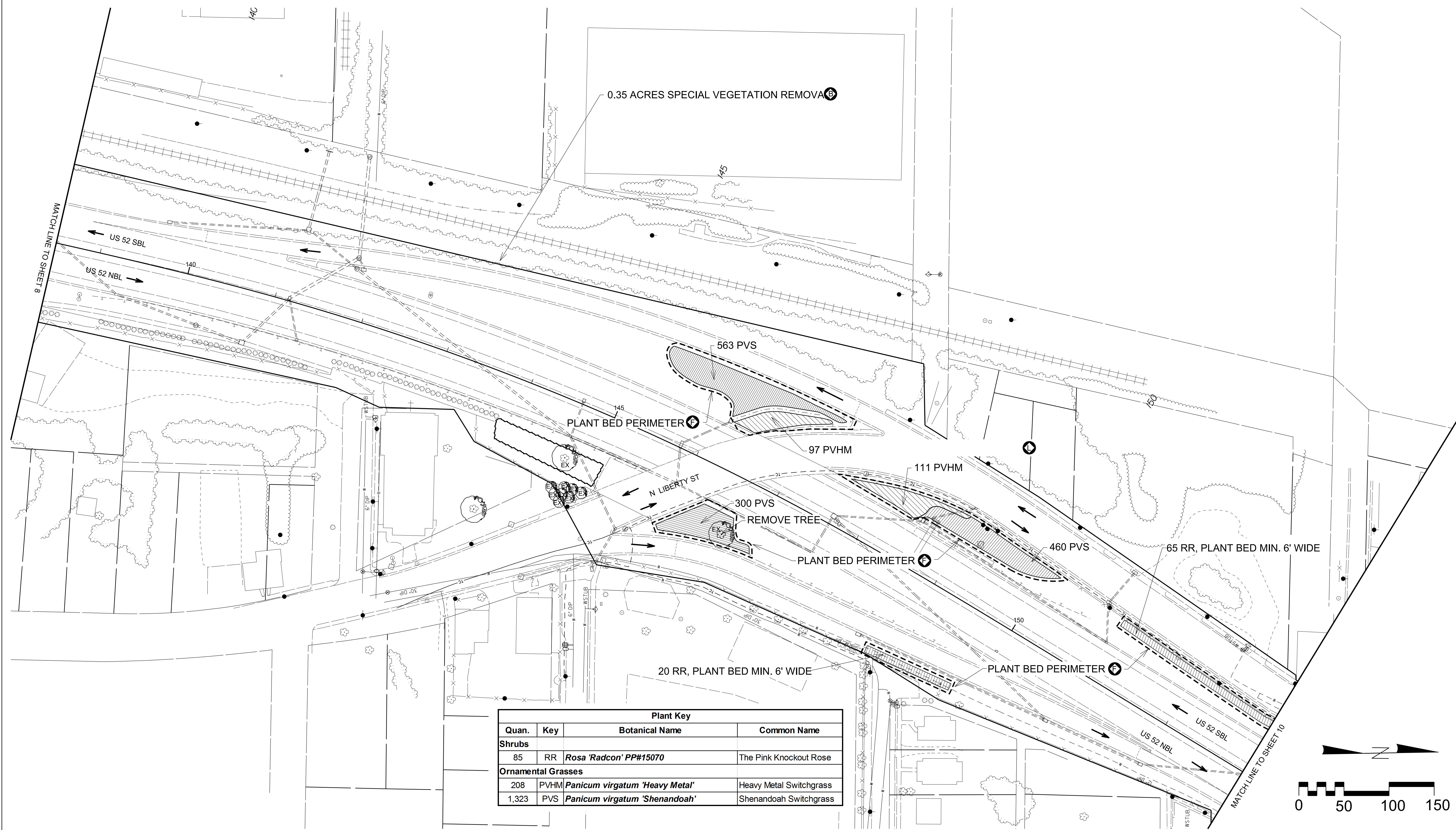
PRELIMINARY DESIGN DATE : JUNE 4, 2013 FINAL DESIGN DATE : JULY 5, 2013
 PROJECT: U-2826
 US 52 - WINSTON SALEM
 DIVISION AND COUNTY:
 DIVISION 9 - FORSYTH COUNTY

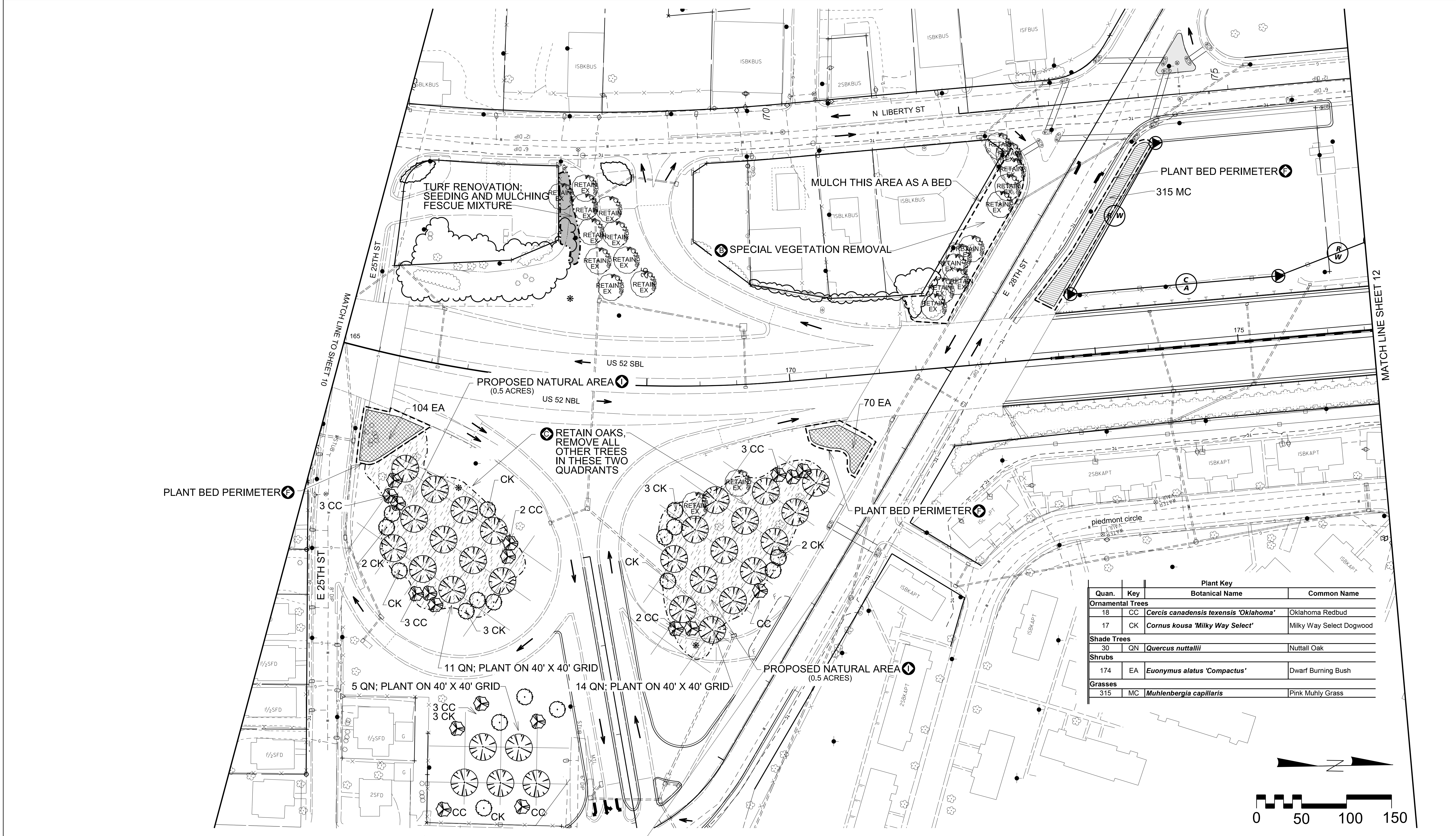


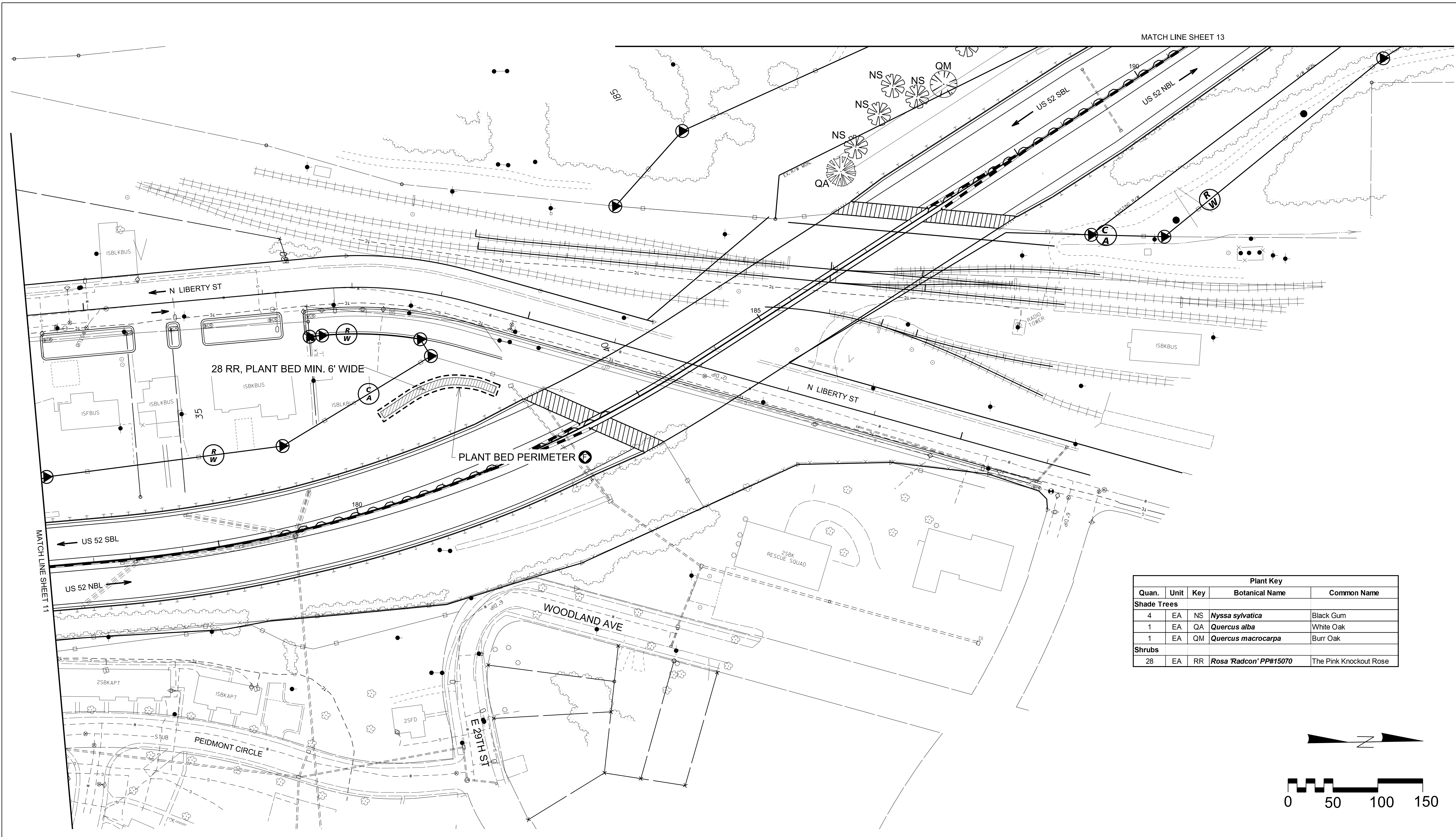
SHEET NO : 7
 TOTAL SHEET NO : 15



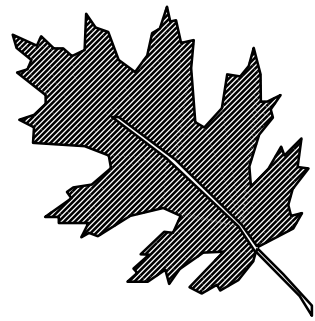
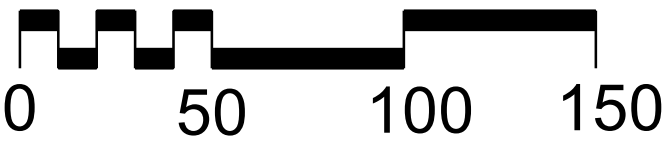
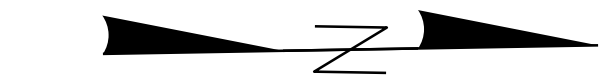
	<p>NCDOT - ROADSIDE ENVIRONMENTAL UNIT LANDSCAPE DESIGN & DEVELOPMENT 1557 MAIL SERVICE CENTER RALEIGH NC 27699-1557 PH: 919-707-2920 FAX: 919-715-2554 http://www.ncdot.org/doh/operations/dp_chief_eng/roadside/</p>	<p>U-2826 A AND B; US 52 FROM I-40 BUSINESS TO SR 2264 (AKRON DRIVE) IN WINSTON SALEM</p> <div></div>	<p>SHEET DESCRIPTION:</p> <table><tr><td>LANDSCAPE DEVELOPMENT</td></tr><tr><td>LANDSCAPE PLAN</td></tr></table>	LANDSCAPE DEVELOPMENT	LANDSCAPE PLAN	<table><tr><td>PRELIMINARY DESIGN DATE : JUNE 4, 2013</td><td>FINAL DESIGN DATE : JULY 5, 2013</td></tr><tr><td colspan="2">PROJECT: U-2826 US 52 - WINSTON SALEM</td></tr><tr><td colspan="2">DIVISION AND COUNTY: DIVISION 9 - FORSYTH COUNTY</td></tr></table>	PRELIMINARY DESIGN DATE : JUNE 4, 2013	FINAL DESIGN DATE : JULY 5, 2013	PROJECT: U-2826 US 52 - WINSTON SALEM		DIVISION AND COUNTY: DIVISION 9 - FORSYTH COUNTY			SHEET NO : 8
				LANDSCAPE DEVELOPMENT										
LANDSCAPE PLAN														
PRELIMINARY DESIGN DATE : JUNE 4, 2013	FINAL DESIGN DATE : JULY 5, 2013													
PROJECT: U-2826 US 52 - WINSTON SALEM														
DIVISION AND COUNTY: DIVISION 9 - FORSYTH COUNTY														
TOTAL SHEET NO : 15														







Plant Key				
Quan.	Unit	Key	Botanical Name	Common Name
Shade Trees				
4	EA	NS	<i>Nyssa sylvatica</i>	Black Gum
1	EA	QA	<i>Quercus alba</i>	White Oak
1	EA	QM	<i>Quercus macrocarpa</i>	Burr Oak
Shrubs				
28	EA	RR	<i>Rosa 'Radcon' PP#15070</i>	The Pink Knockout Rose



NCDOT - ROADSIDE ENVIRONMENTAL UNIT
LANDSCAPE DESIGN & DEVELOPMENT
1557 MAIL SERVICE CENTER RALEIGH NC 27699-1557
PH: 919-707-2920 FAX: 919-715-2554
http://www.ncdot.org/doh/operations/dp_chief_eng/roadside/

U-2826 A AND B;
US 52 FROM I-40 BUSINESS
TO SR 2264 (AKRON DRIVE) IN
WINSTON SALEM

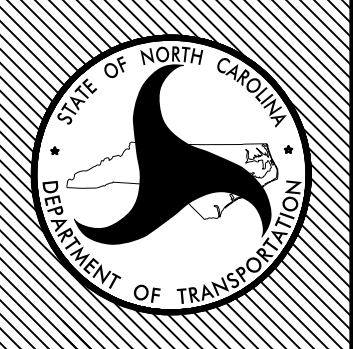
Connie Morgan
REU ENGINEER

SHEET DESCRIPTION:

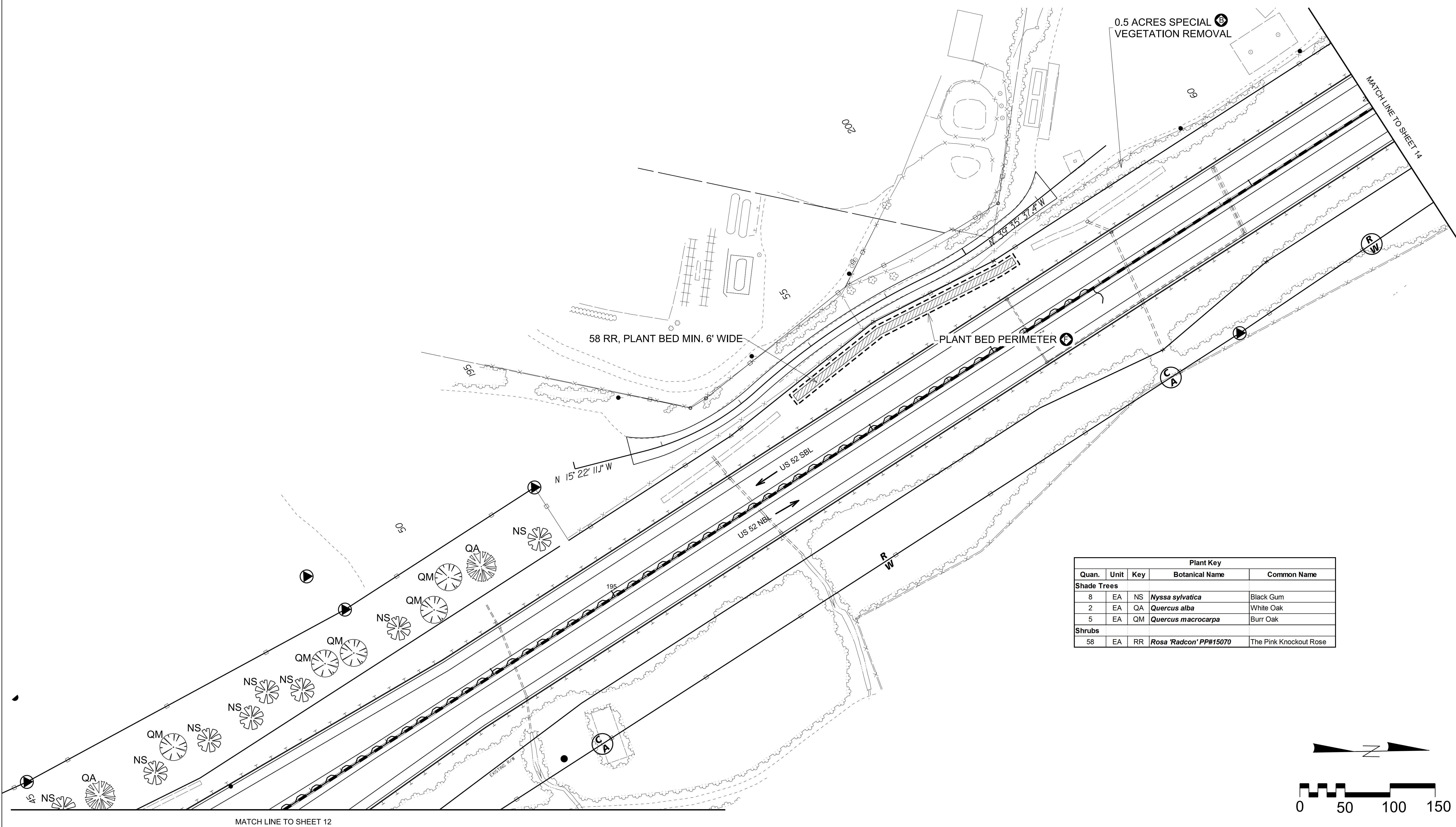
LANDSCAPE DEVELOPMENT

LANDSCAPE PLAN

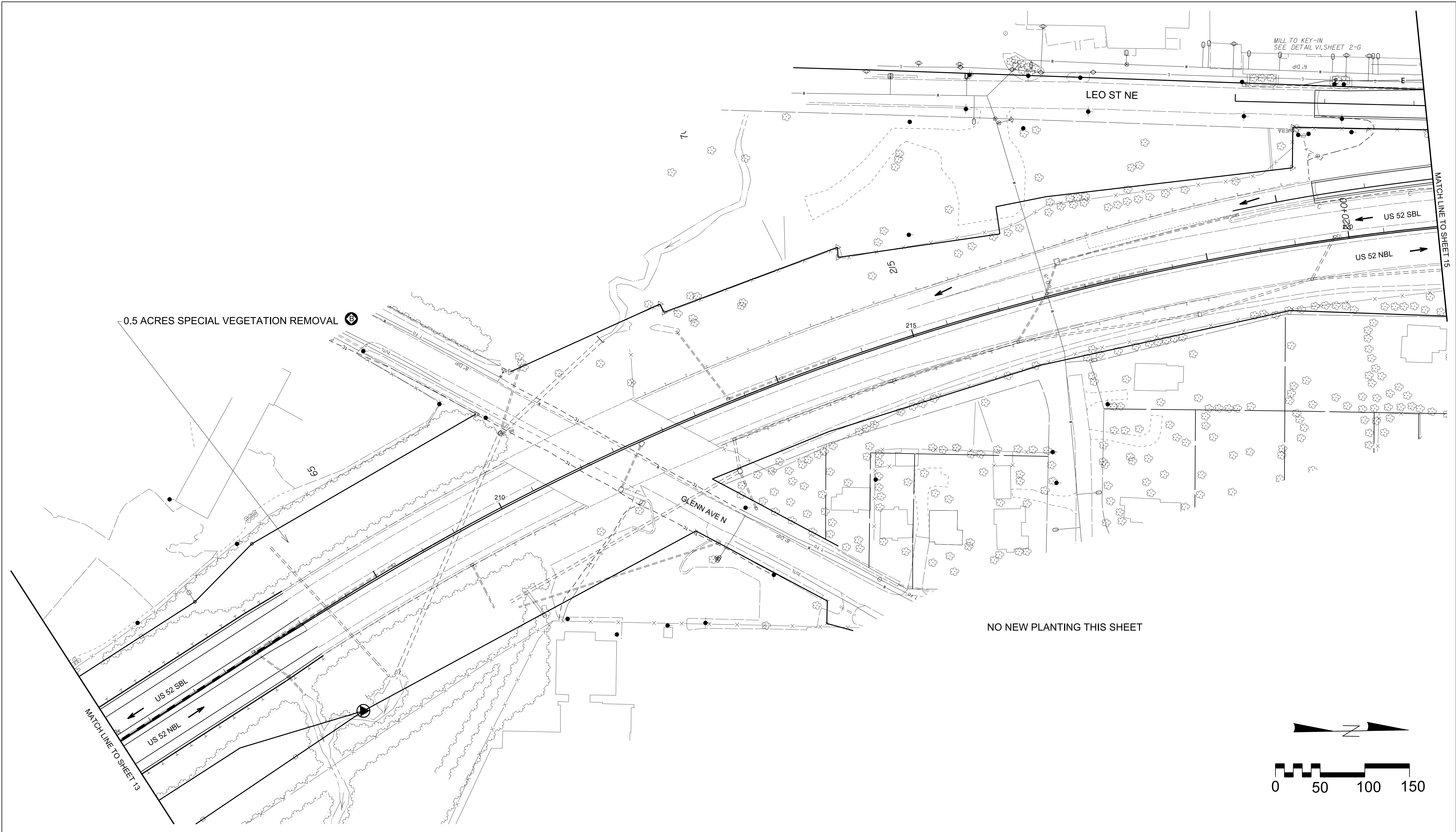
PRELIMINARY DESIGN DATE : JUNE 4, 2013 FINAL DESIGN DATE : JULY 5, 2013
PROJECT: U-2826
US 52 - WINSTON SALEM
DIVISION AND COUNTY:
DIVISION 9 - FORSYTH COUNTY


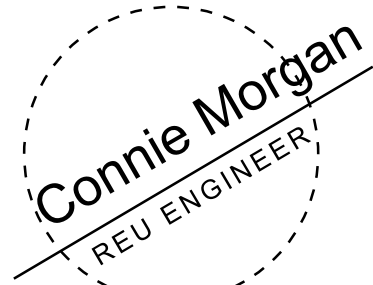



SHEET NO : 12
TOTAL SHEET NO : 15



Plant Key				
Quan.	Unit	Key	Botanical Name	Common Name
Shade Trees				
8	EA	NS	<i>Nyssa sylvatica</i>	Black Gum
2	EA	QA	<i>Quercus alba</i>	White Oak
5	EA	QM	<i>Quercus macrocarpa</i>	Burr Oak
Shrubs				
58	EA	RR	<i>Rosa 'Radcon' PP#15070</i>	The Pink Knockout Rose



	NCDOT - ROADSIDE ENVIRONMENTAL UNIT LANDSCAPE DESIGN & DEVELOPMENT 1557 MAIL SERVICE CENTER RALEIGH NC 27699-1557 PH: 919-707-2920 FAX: 919-715-2554 http://www.ncdot.org/doh/operations/dp_chief_eng/roadside/	U-2826 A AND B; US 52 FROM I-40 BUSINESS TO SR 2264 (AKRON DRIVE) IN WINSTON SALEM		SHEET DESCRIPTION: LANDSCAPE DEVELOPMENT LANDSCAPE PLAN	PRELIMINARY DESIGN DATE : JUNE 4, 2013	FINAL DESIGN DATE : JULY 5, 2013		SHEET NO : 14
					PROJECT: U-2826 US 52 - WINSTON SALEM			TOTAL SHEET NO : 15
					DIVISION AND COUNTY: DIVISION 9 - FORSYTH COUNTY			

