

STREET LISTING CHART

STREET	LENGTH IN TOWN LIMITS	STATE OR MUNICIPALY-MAINTAINED
ACADEMY STREET	0.11 MI.	MUNICIPALLY-MAINTAINED
CHURCH STREET	0.13 MI.	MUNICIPALLY-MAINTAINED
COURT STREET - NC 137	1.33 MI.	STATE
EDMOND STREET	0.09 MI.	MUNICIPALLY-MAINTAINED
EURE STREET	0.10 MI.	MUNICIPALLY-MAINTAINED
HIGH STREET	0.39 MI.	MUNICIPALLY-MAINTAINED
HOFLER STREET	0.06 MI.	MUNICIPALLY-MAINTAINED
JACKSON STREET	0.14 MI.	MUNICIPALLY-MAINTAINED
LEWIS MILL ROAD - SR 1124	0.04 MI.	STATE
MAIN STREET - US 158 BUSINESS - NC 37	1.41 MI.	STATE
MAGNOLIA LANE	0.07 MI.	MUNICIPALLY-MAINTAINED
MAPLE AVENUE	0.06 MI.	MUNICIPALLY-MAINTAINED
WEST MAPLE STREET	0.16 MI.	MUNICIPALLY-MAINTAINED
EAST MAPLE STREET - US 158 BUSINESS	0.34 MI.	STATE
NEW FERRY ROAD - SR 1111	0.08 MI.	STATE
ROBERTS STREET	0.11 MI.	MUNICIPALLY-MAINTAINED
SAVAGE STREET	0.07 MI.	STATE
SMITH STREET	0.08 MI.	MUNICIPALLY-MAINTAINED
WILLEY LANE	0.24 MI.	MUNICIPALLY-MAINTAINED
WILLIAMS STREET	0.05 MI.	MUNICIPALLY-MAINTAINED
TOTAL LENGTH MUNICIPALY-MAINTAINED	1.72 MI.	
TOTAL LENGTH STATE MAINTAINED	3.27 MI.	
TOTAL ALL ROADS WITHIN TOWN LIMITS	5.06 MI.	

NOTES:

- 1.) TOWN LIMITS LINE WAS TAKEN FROM A PLAT ENTITLED "MAP OF TOWN OF GATESVILLE, N.C." PREPARED BY GRAHAM POLLOCK - L680 DATED APRIL 17, 1971. SAID MAP DOES NOT CLOSE MATHEMATICALLY THEREFORE MONUMENTATION WAS HELD AS CONTROLLING.
- 2.) NCGS MONUMENT "HAYES" COORDINATE INFORMATION WAS OBTAINED FROM NGS WEBSITE "www.ngs.noaa.gov" JULY 07, 2010.
- 3.) ALL STREET LENGTHS ARE HORIZONTAL GROUND DISTANCES SHOWN IN MILES.
- 4.) STREET LENGTHS WERE COLLECTED BY A GPS SURVEY PERFORMED ON JULY 13, 2010. AUGUST 03, 2020.

CERTIFICATE OF ACCURACY

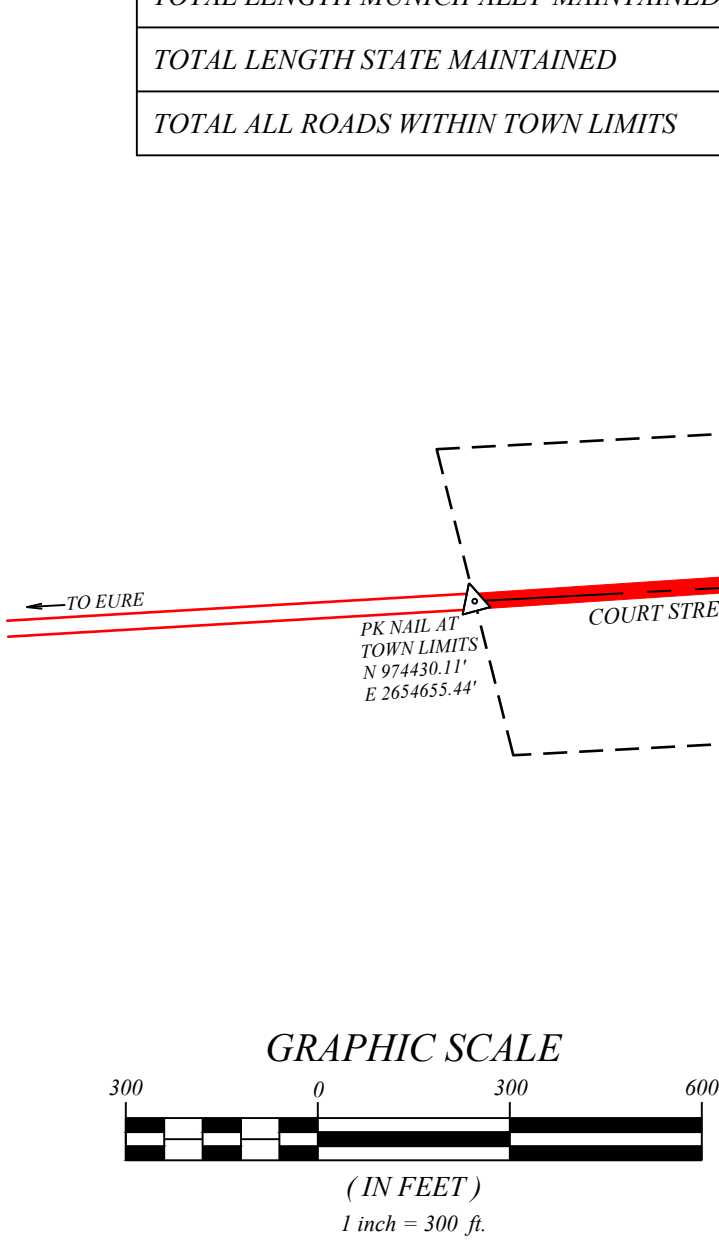
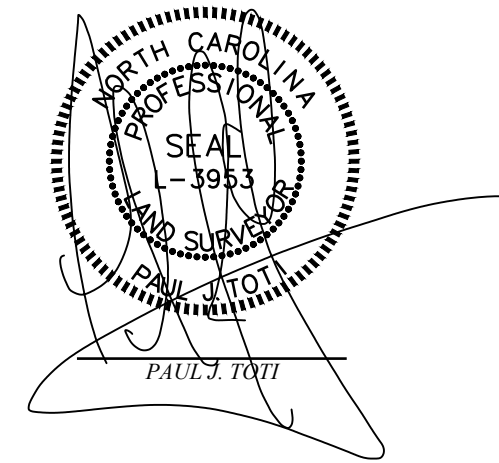
I, PAUL J. TOTI, CERTIFY THAT THIS MAP WAS DRAWN UNDER MY SUPERVISION FROM AN ACTUAL SURVEY MADE BY ME. DEED DESCRIPTION FOUND IN DEED BOOK SEE, PAGE REF.; THAT THE RATIO OF PRECISION AS CALCULATED IS 1:10,000 +/-; THAT THE GLOBAL POSITIONING SYSTEM (GPS) OBSERVATIONS WERE PERFORMED TO THE GEOSPATIAL POSITIONING ACCURACY STANDARDS, PART 2 - STANDARDS FOR GEODETIC NETWORKS AT THE 2-CENTIMETERS ACCURACY CLASSIFICATION (95% CONFIDENCE) USING "RTK"; THAT THIS PLAT IS IN ACCORDANCE WITH BOARD RULES; THAT THIS PLAT MEETS THE REQUIREMENTS OF THE STANDARDS OF PRACTICE FOR LAND SURVEYING IN NORTH CAROLINA 21 NCAC 56.1600.

I, PAUL J. TOTI, PLS-3953, ALSO CERTIFY, THAT THIS MAP WAS DRAWN UNDER MY SUPERVISION FROM AN ACTUAL GPS SURVEY MADE UNDER MY SUPERVISION AND THAT THE FOLLOWING INFORMATION WAS USED TO PERFORM THE SURVEY:

- 1.) CLASS OF SURVEY: CLASS A
- 2.) POSITIONAL ACCURACY: 2-CENTIMETERS
- 3.) TYPE OF GPS FIELD PROCEDURE: "RTK"
- 4.) DATE OF SURVEY: JULY 13, 2010
- 5.) DATUM / EPOCH: NC GRID - NAD 83 - EPOCH 2010
- 6.) PUBLISHED / FIXED CONTROL USE: "HAYES"
- 7.) GRID MODEL: GRID 99
- 8.) COMBINED FACTOR: 1.00007921

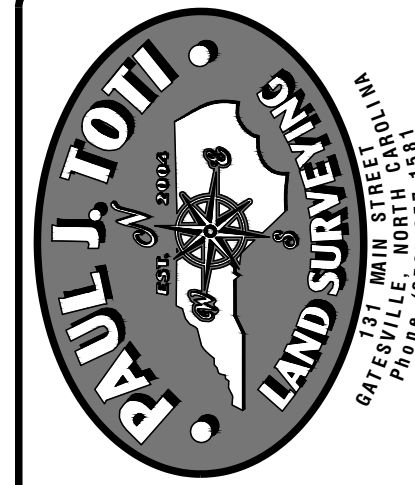
I, PAUL J. TOTI, ALSO CERTIFY, THIS PLAT IS OF ANOTHER CATEGORY, SUCH AS THE RECOMBINATION OF EXISTING PARCELS, A COURT ORDERED SURVEY OR OTHER EXEMPTION TO THE DEFINITION OF SUBDIVISION, (CERTIFIED POWELL BILL MAP)

WITNESS MY ORIGINAL SIGNATURE, REG. NUMBER, AND SEAL THIS 03 DAY OF AUGUST, 2020.



LEGEND

	STATE MAINTAINED ROADS
	MUNICIPALLY MAINTAINED ROADS
	TOWN OF GATESVILLE TOWN LIMITS (SEE NOTE 1)
	TIE LINE
	NORTH CAROLINA GEODETIC SURVEY MONUMENT
	PK NAIL



CERTIFIED POWELL BILL MAP
FOR
TOWN OF GATESVILLE
GATESVILLE TOWNSHIP
GATES COUNTY
NORTH CAROLINA

DRAWN BY:	RKC
CHECKED BY:	PJT
PROJECT #:	19054
FIELD BOOK:	SURVEY CREW
DATE:	07/13/2010
REV:	02/02/2015
UPDATED:	08/03/2020
SHEET NUMBER:	1 of 1